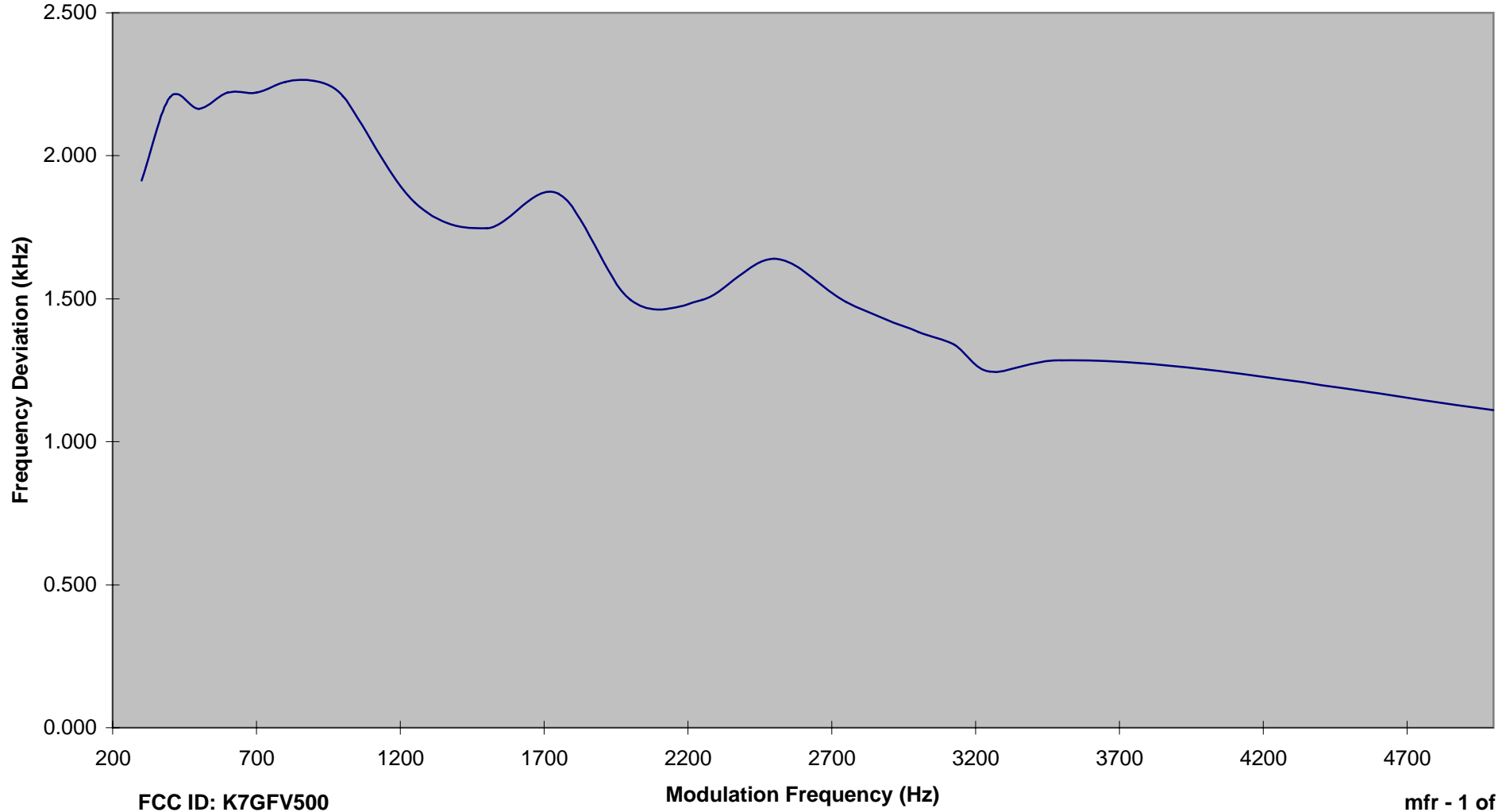


“mfr” file

INTERTEK TESTING SERVICES

Modulation Frequency Response



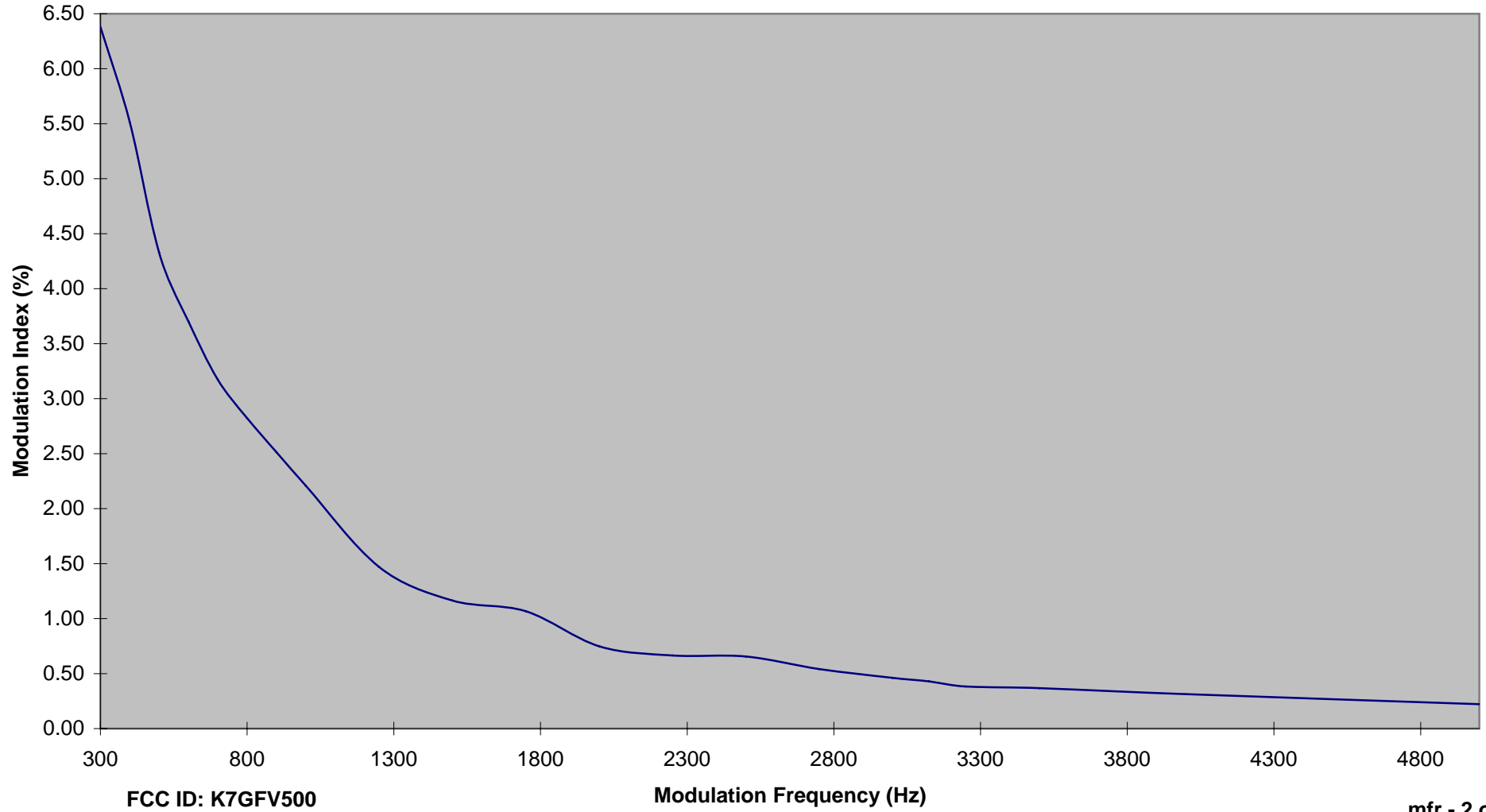
FCC ID: K7GFV500

Modulation Frequency (Hz)

mfr - 1 of 2

INTERTEK TESTING SERVICES

Modulation Frequency Response



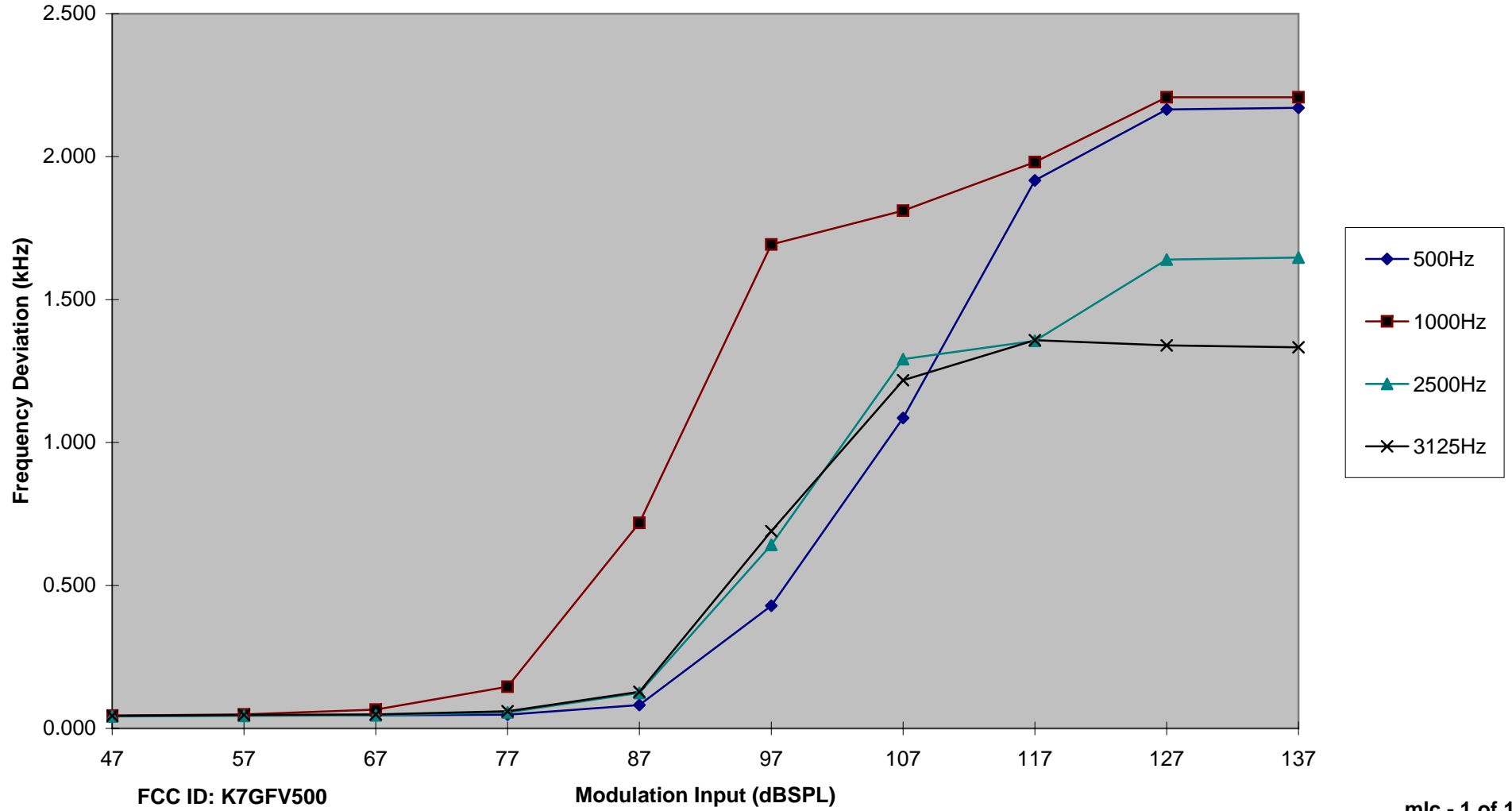
FCC ID: K7GFV500

Modulation Frequency (Hz)

“mlc” file

INTERTEK TESTING SERVICES

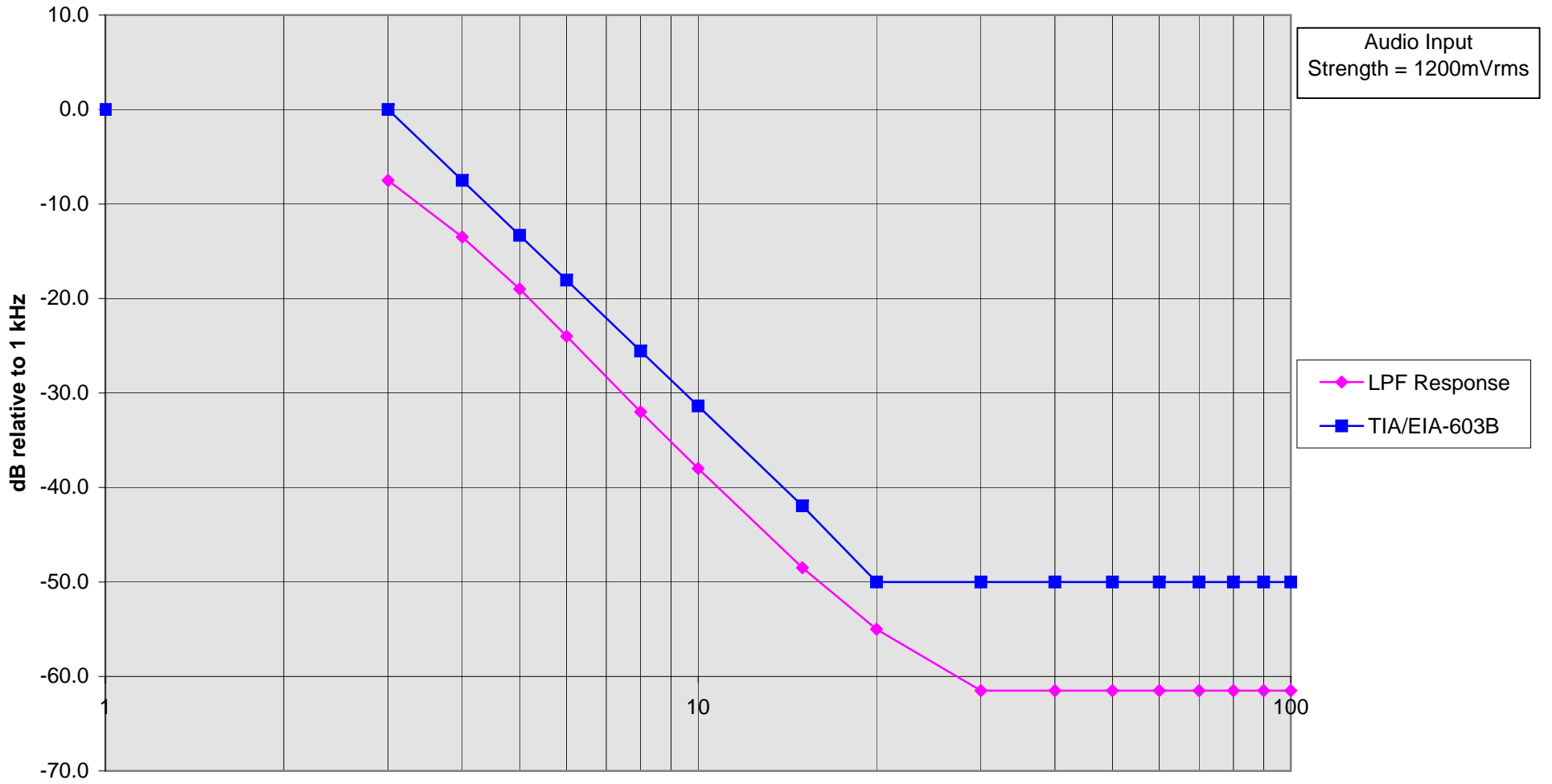
Modulation Limiting Characteristic



“lpf” file

INTERTEK TESTING SERVICES

Audio Low Pass Filter Response



“bw” file

INTERTEK TESTING SERVICES

Occupied Bandwidth Plots

MKR -5.50 kHz

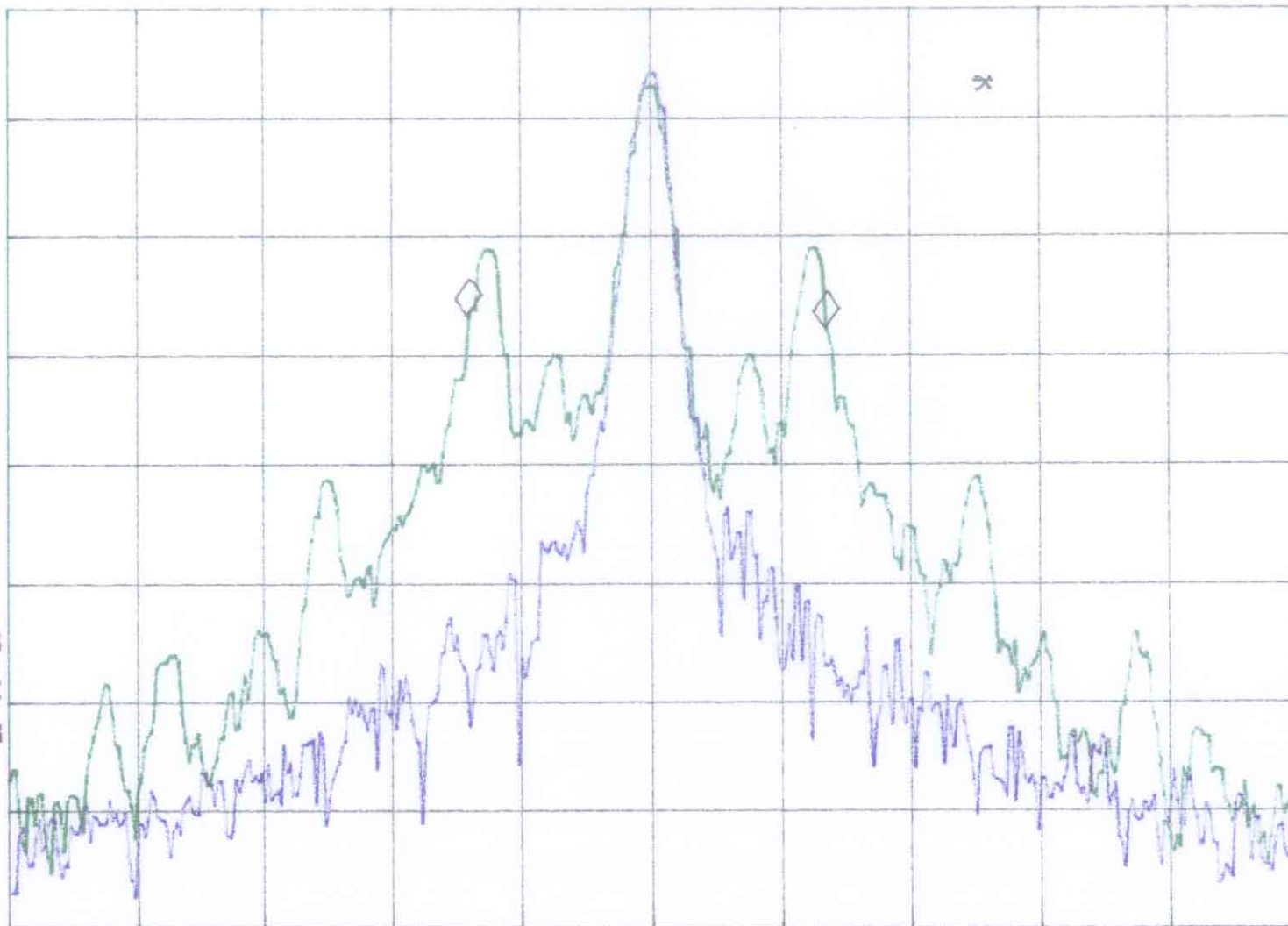
hp

REF 12.7 dBm

AT 30 dB

1.19 dB

PEAK
LOG
10
dB/



Channel 4

VA VB
SC FC
CORR

CENTER 462.63750 MHz

#RES BW 300 Hz

VBW 300 Hz

SPAN 20.00 kHz

SWP 1.00 sec

FCC ID: K7GFV500

INTERTEK TESTING SERVICES

Occupied Bandwidth Plots

MKR -5.60 kHz

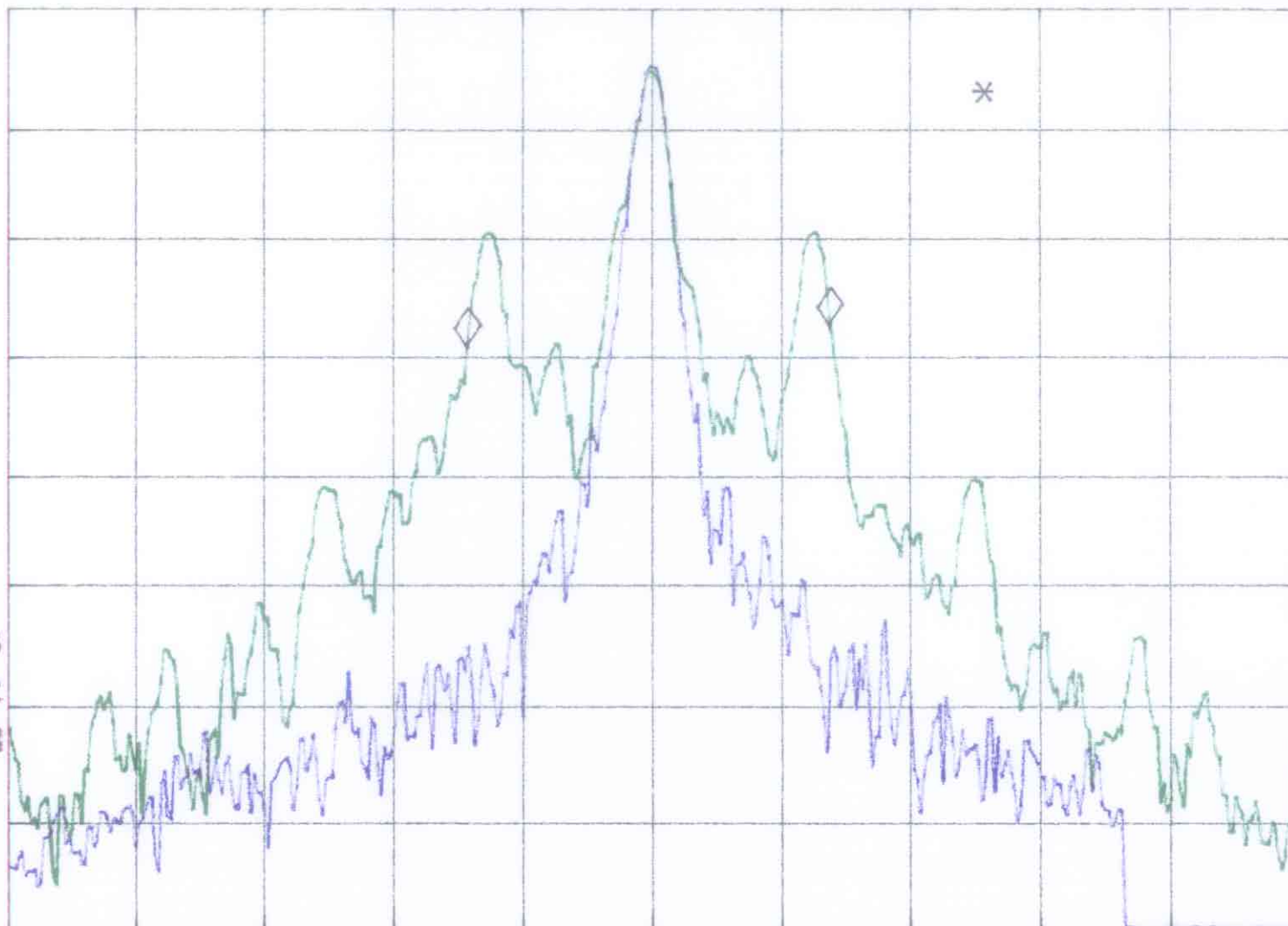
-1.72 dB

hp

REF 10.4 dBm

AT 30 dB

PEAK
LOG
10
dB/



Channel 11

VA VB
SC FC
CORR

CENTER 467.63750 MHz

#RES BW 300 Hz

VBW 300 Hz

SPAN 20.00 kHz

SWP 1.00 sec

FCC ID: K76FV500

Emission mask
“spurious” file

INTERTEK TESTING SERVICES

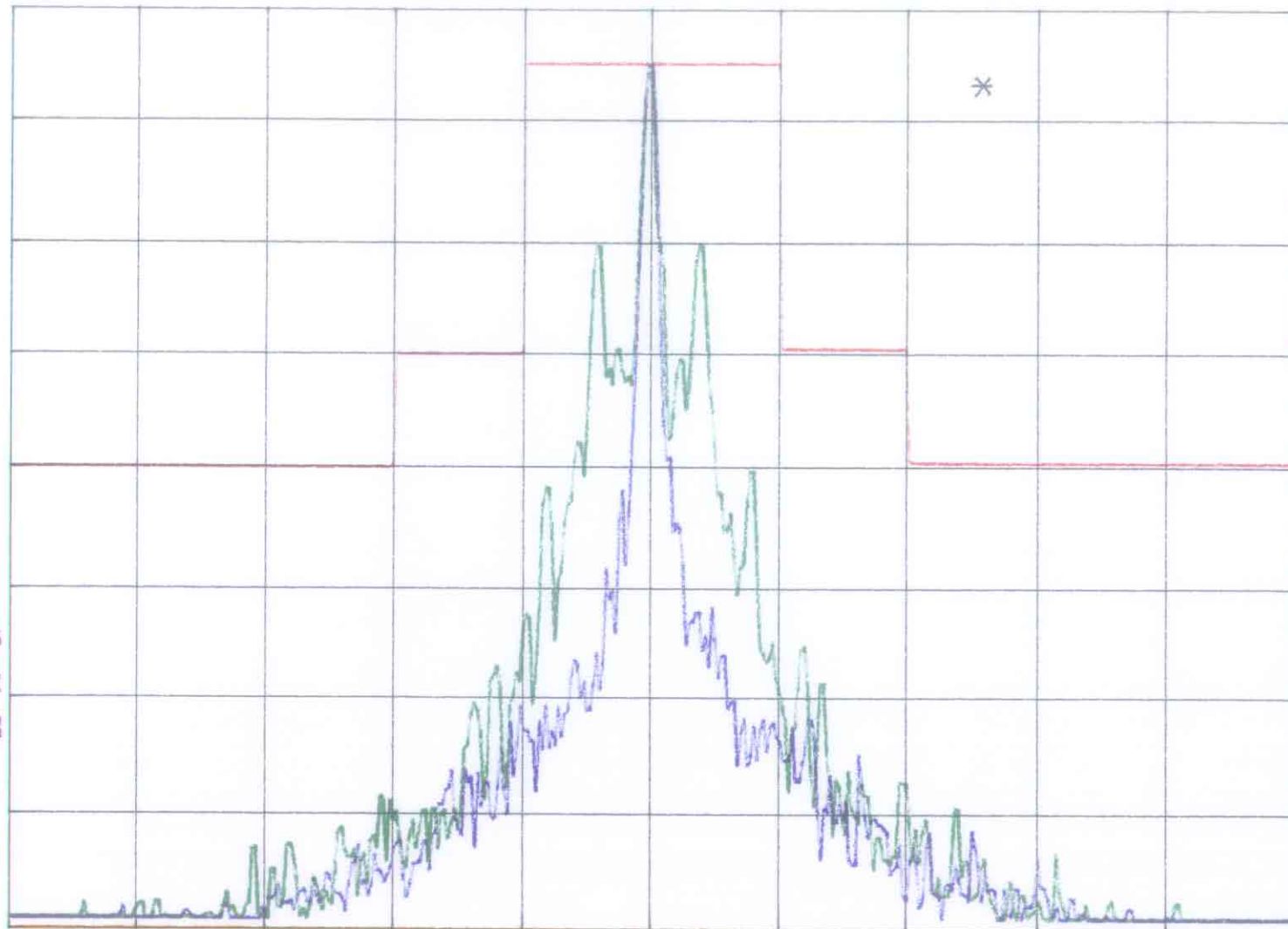
Spurious Emission Plots

hp

REF 12.7 dBm

AT 30 dB

PEAK
LOG
10
dB/



Channel 4

VA VB
SC FC
CORR

CENTER 462.63750 MHz

#RES BW 300 Hz

VBW 300 Hz

SPAN 62.50 kHz

SWP 2.00 sec

FCC ID: K76FV500

INTERTEK TESTING SERVICES

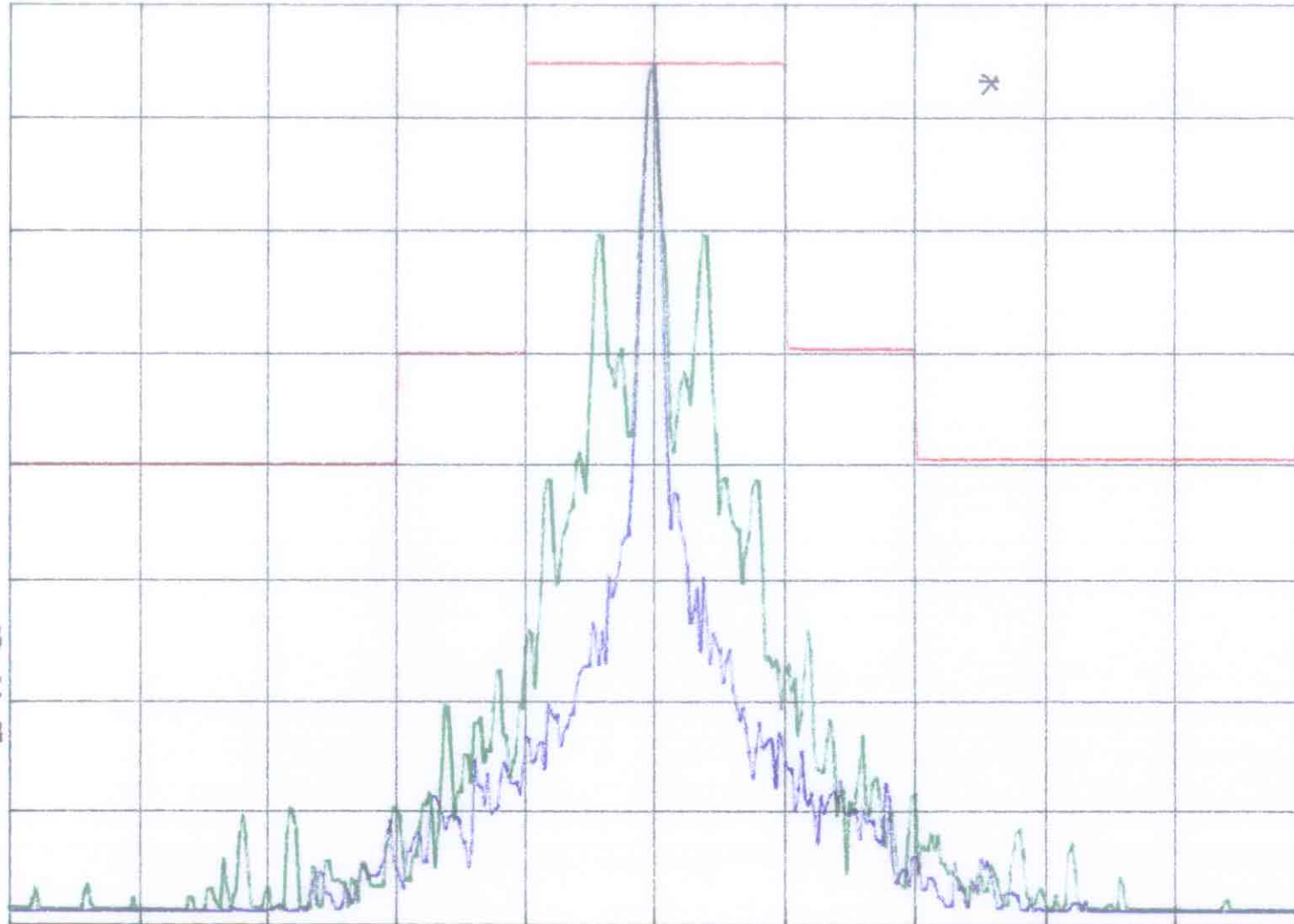
Spurious Emission Plots

hsp

REF 10.4 dBm

AT 30 dB

PEAK
LOG
10
dB/



Channel 11

CENTER 467.63750 MHz

#RES BW 300 Hz

VBW 300 Hz

SPAN 62.50 kHz

SWP 2.00 sec

FCC ID: K76FV500