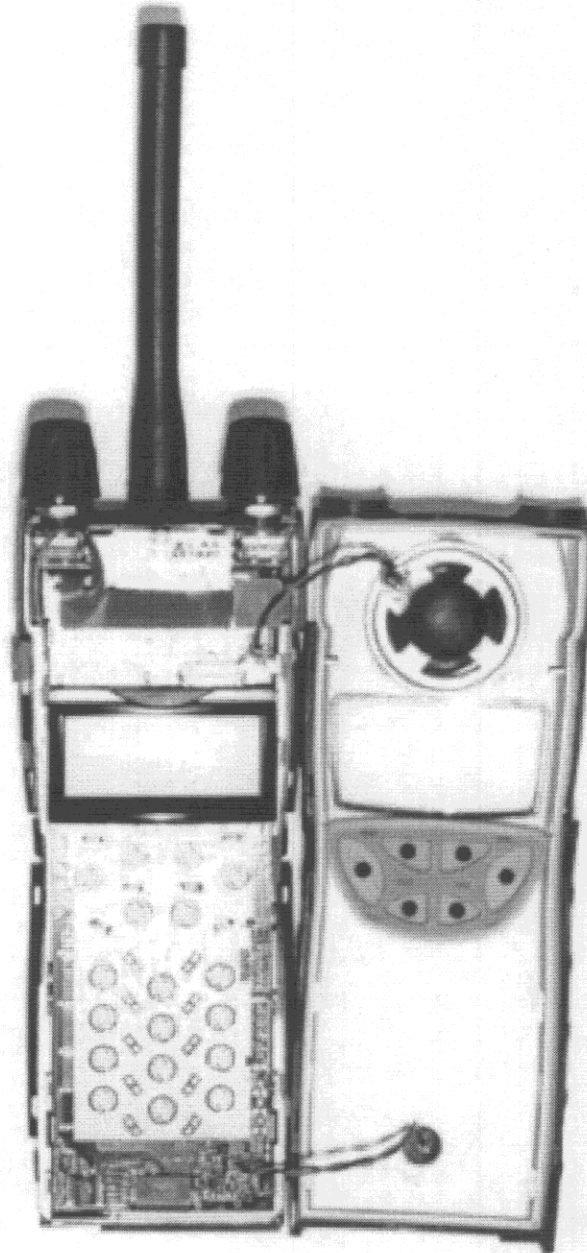


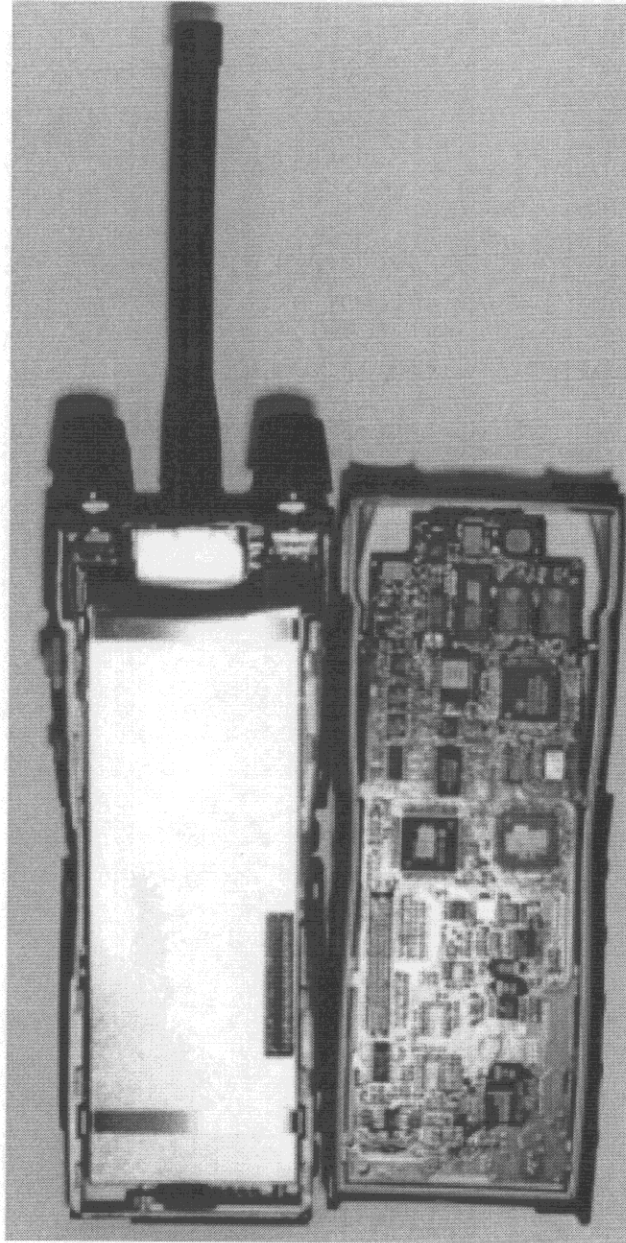
6.1 - (g) Photographs of the LMP4215, 5Watt mobile transceiver.

INTERNAL VIEW SHOWING INSIDE OF FRONT MOULDING,
LCD UNIT AND SPU PCB (LCD SIDE)



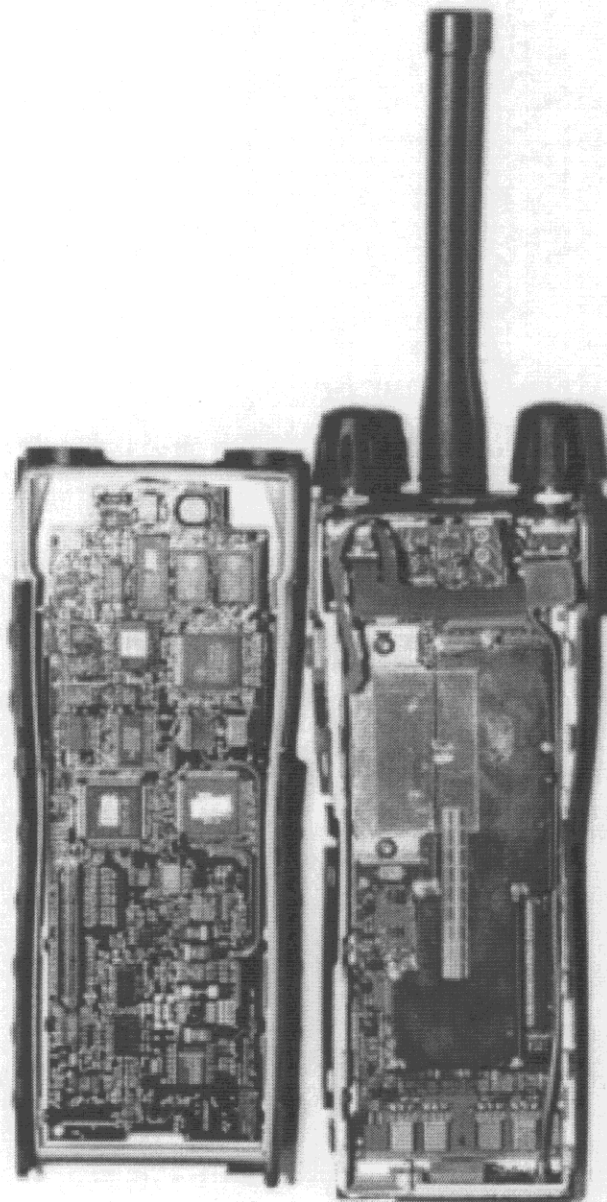
6.1 - (g) Photographs of the LMP4215, 5Watt mobile transceiver.

INTERNAL VIEW SHOWING RFU SCREEN AND COMPONENT SIDE OF SPU



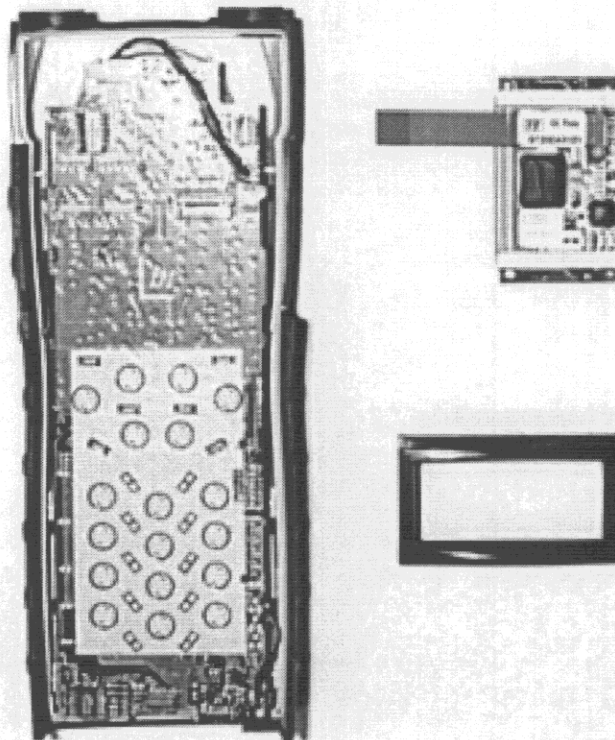
6.1 - (g) Photographs of the LMP4215, 5Watt mobile transceiver.

INTERNAL VIEW SHOWING THE TOP SIDE OF THE RFU PCB AND COMPONENT SIDE OF SPU



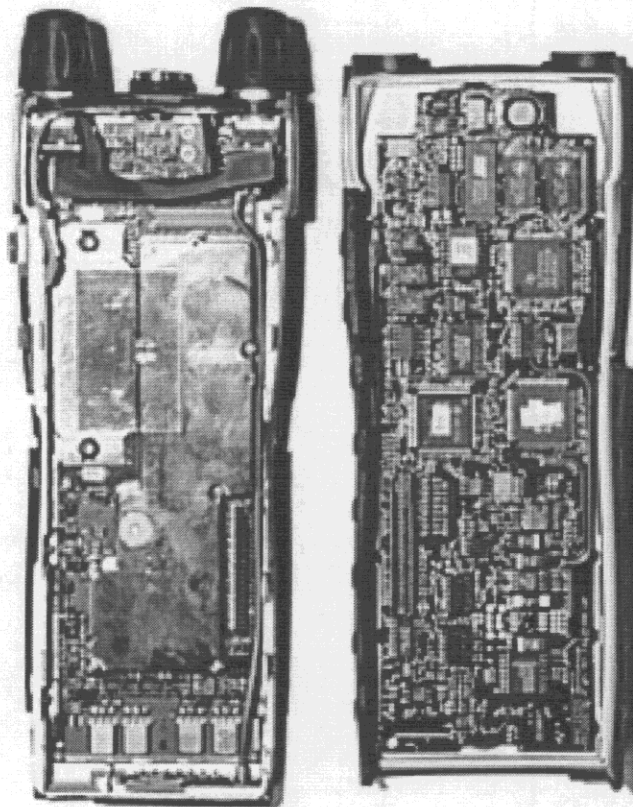
6.1 - (g) Photographs of the LMP4215, 5Watt mobile transceiver.

SPU PCB WITH LCD MODULE REMOVED



6.1 - (g) Photographs of the LMP4215, 5Watt mobile transceiver.

TOP SIDE OF THE RFU PCB AND
COMPONENT SIDE OF SPU



6.1 - (g) Photographs of the LMP4215, 5Watt mobile transceiver.

TOP SIDE OF THE RFU PCB(CAN REMOVED)
AND BOTTOM SIDE (CANS FITTED/ REMOVED).

