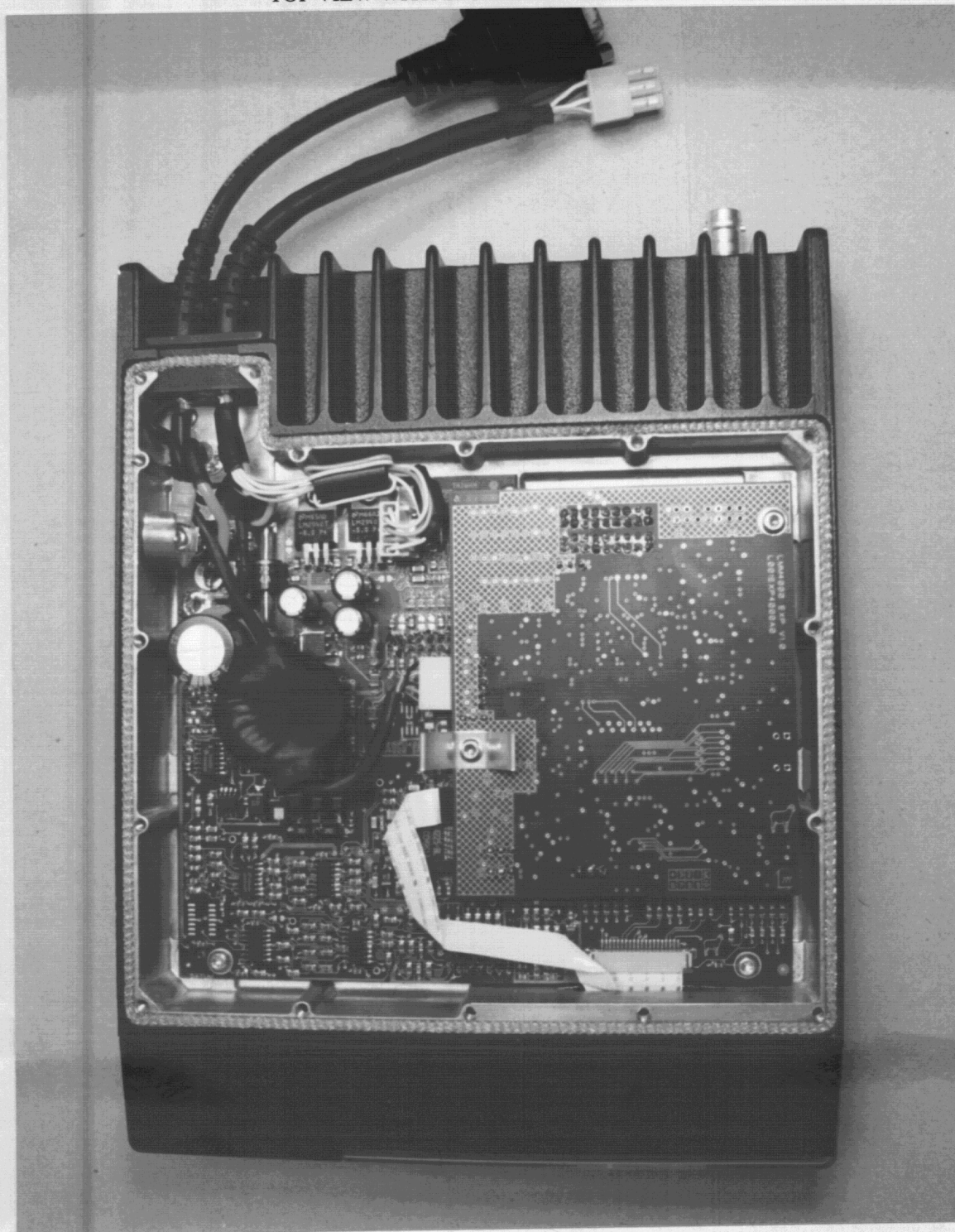


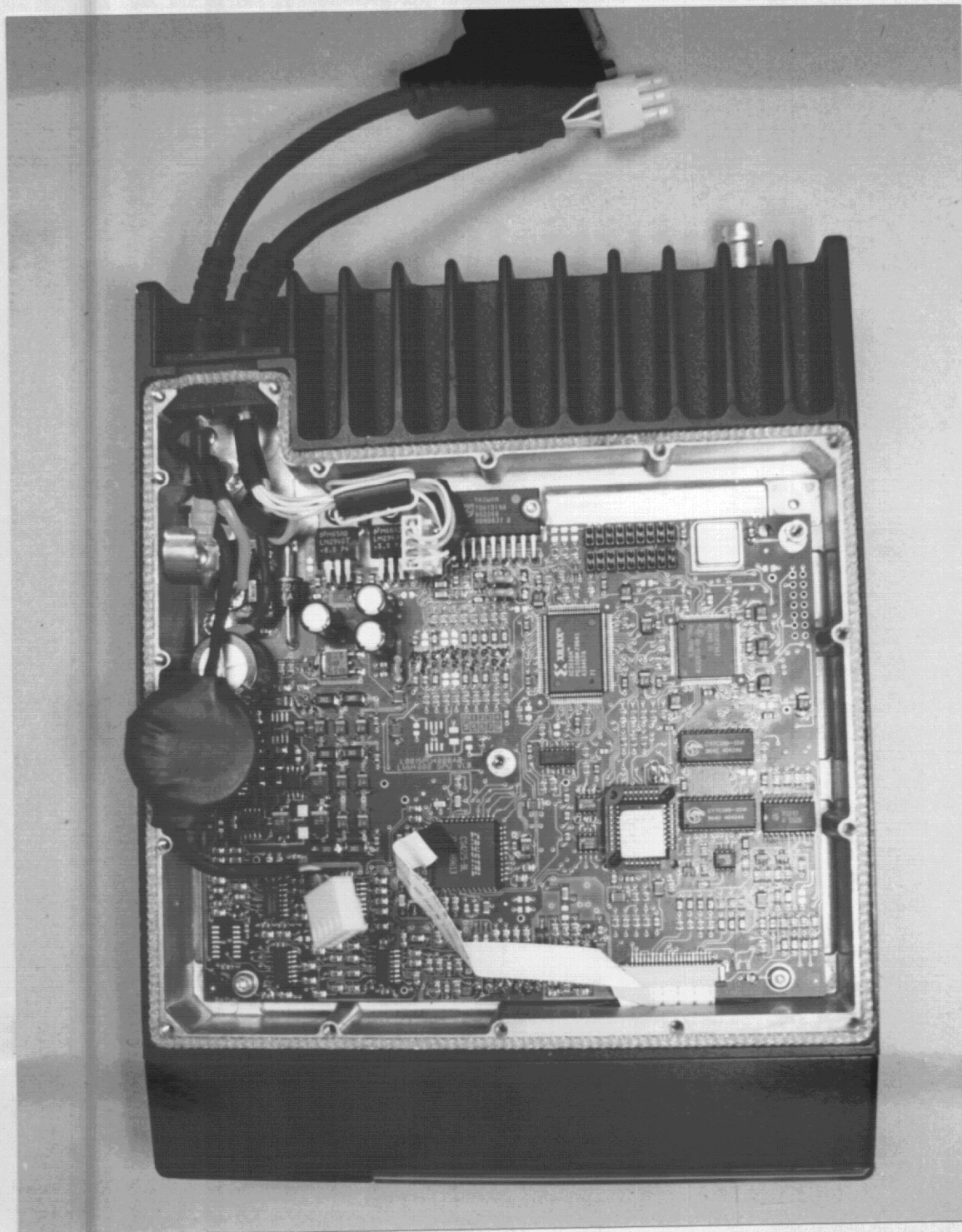
6.1 - (g) Photographs of the LMM4113D 25 watt mobile transceiver

TOP VIEW WITH SPU COVER REMOVED



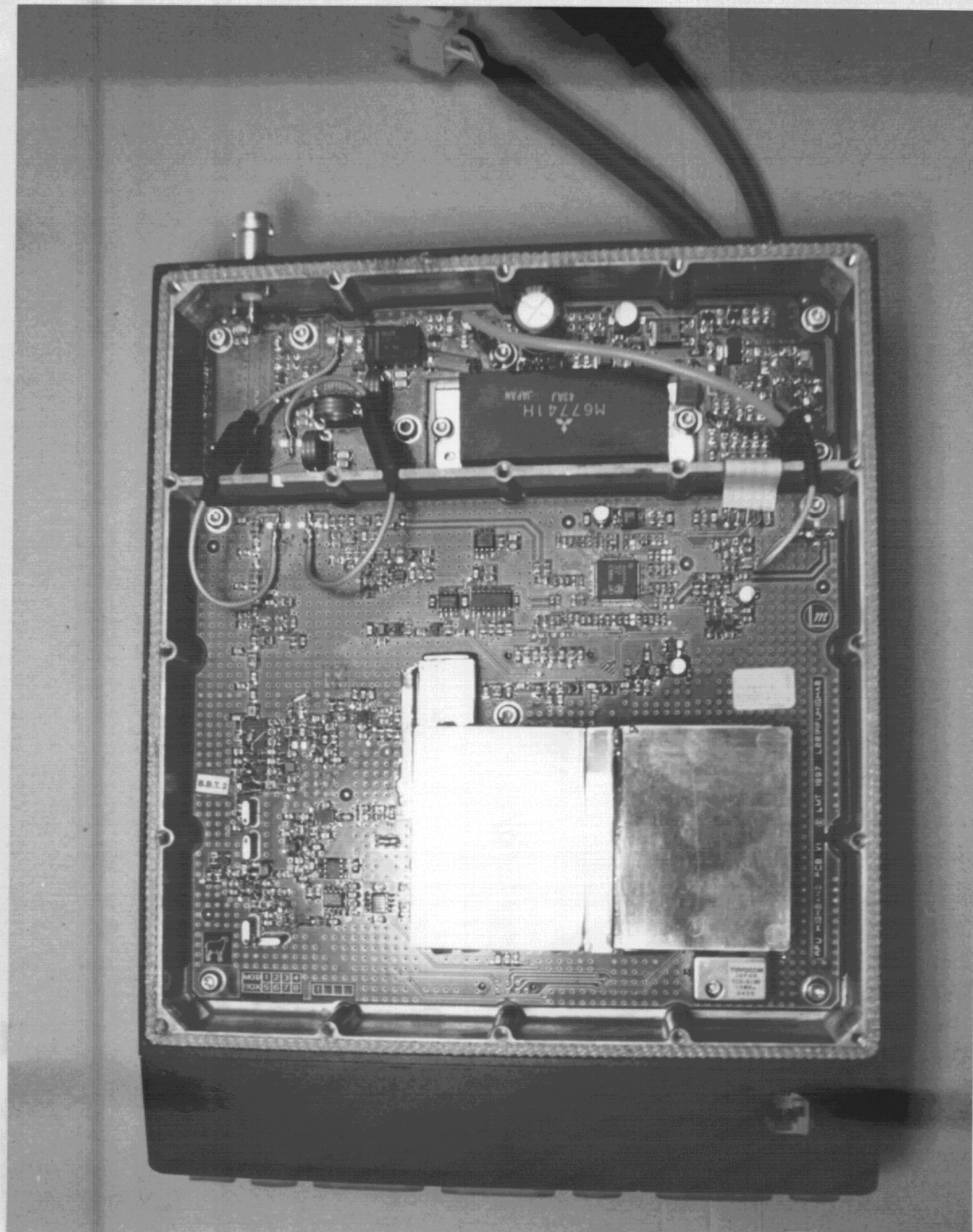
6.1 - (g) Photographs of the LMM4113D 25 watt mobile transceiver

TOP VIEW WITH SPU COVER AND EXP PCB REMOVED



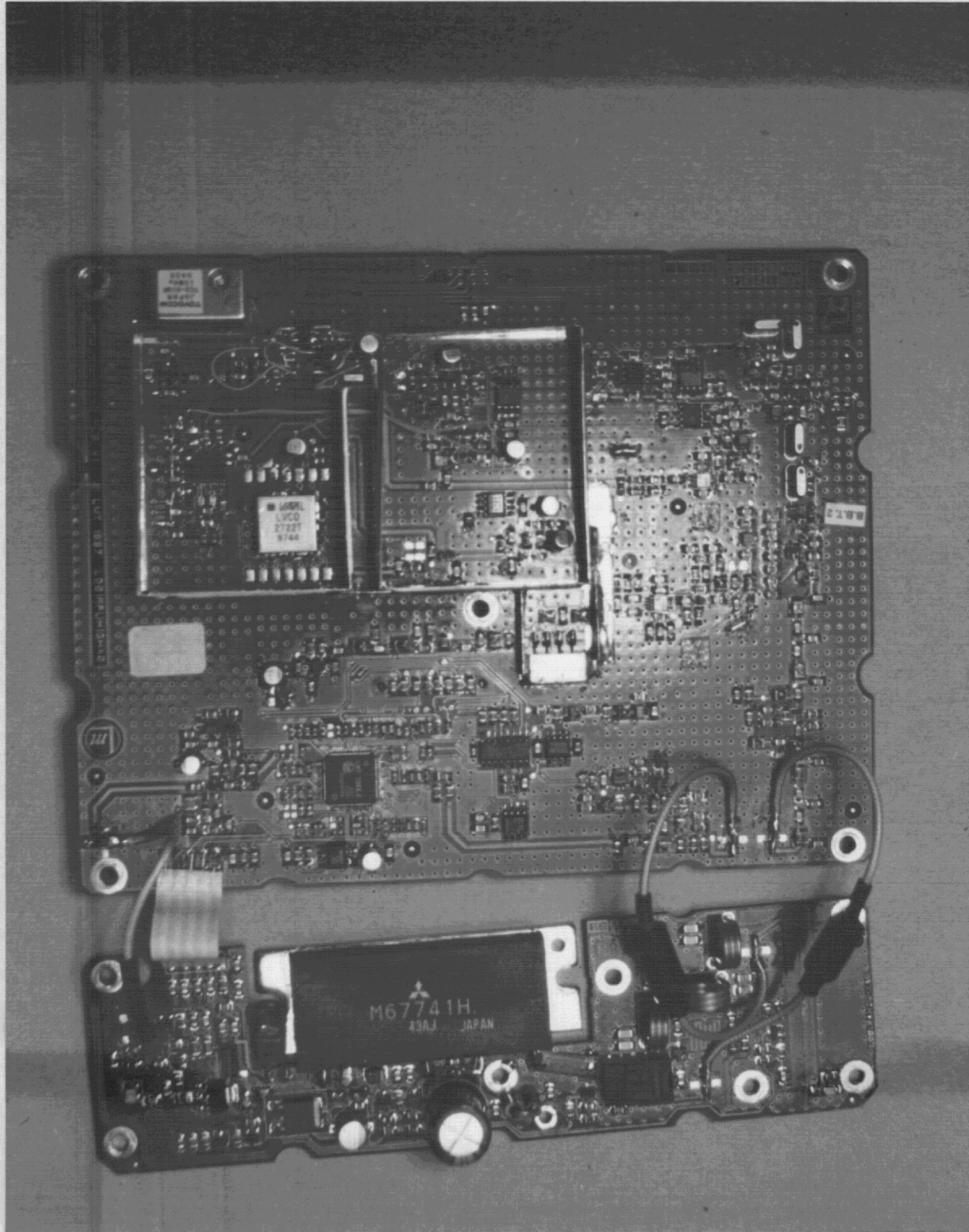
6.1 - (g) Photographs of the LMM4113D 25 watt mobile transceiver

BOTTOM VIEW WITH RFU COVER REMOVED



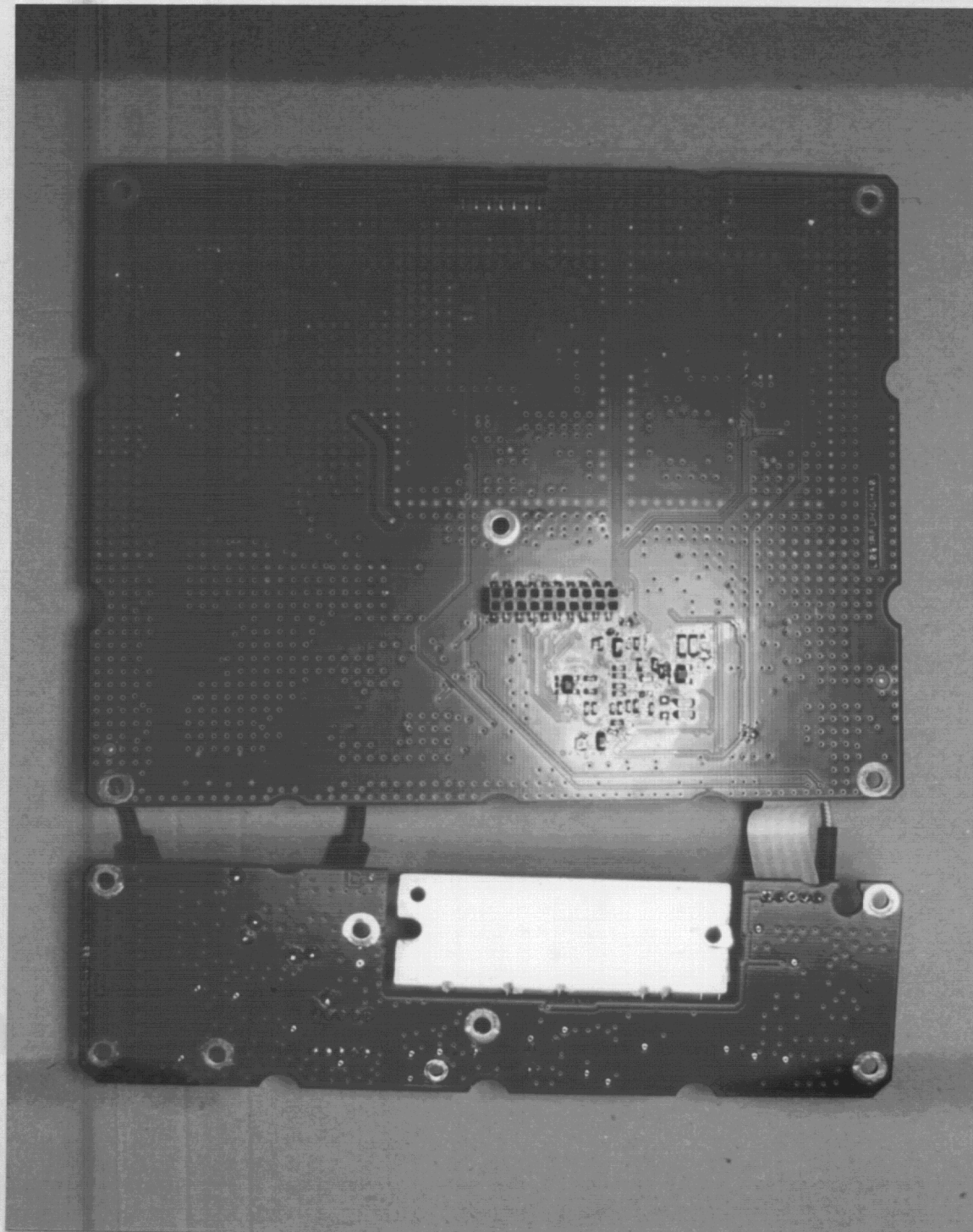
6.1 - (g) Photographs of the LMM4113D 25 watt mobile transceiver

RADIO FREQUENCY UNIT (RFU) & POWER AMPLIFIER (PA) PCB COMPONENT SIDE VIEW



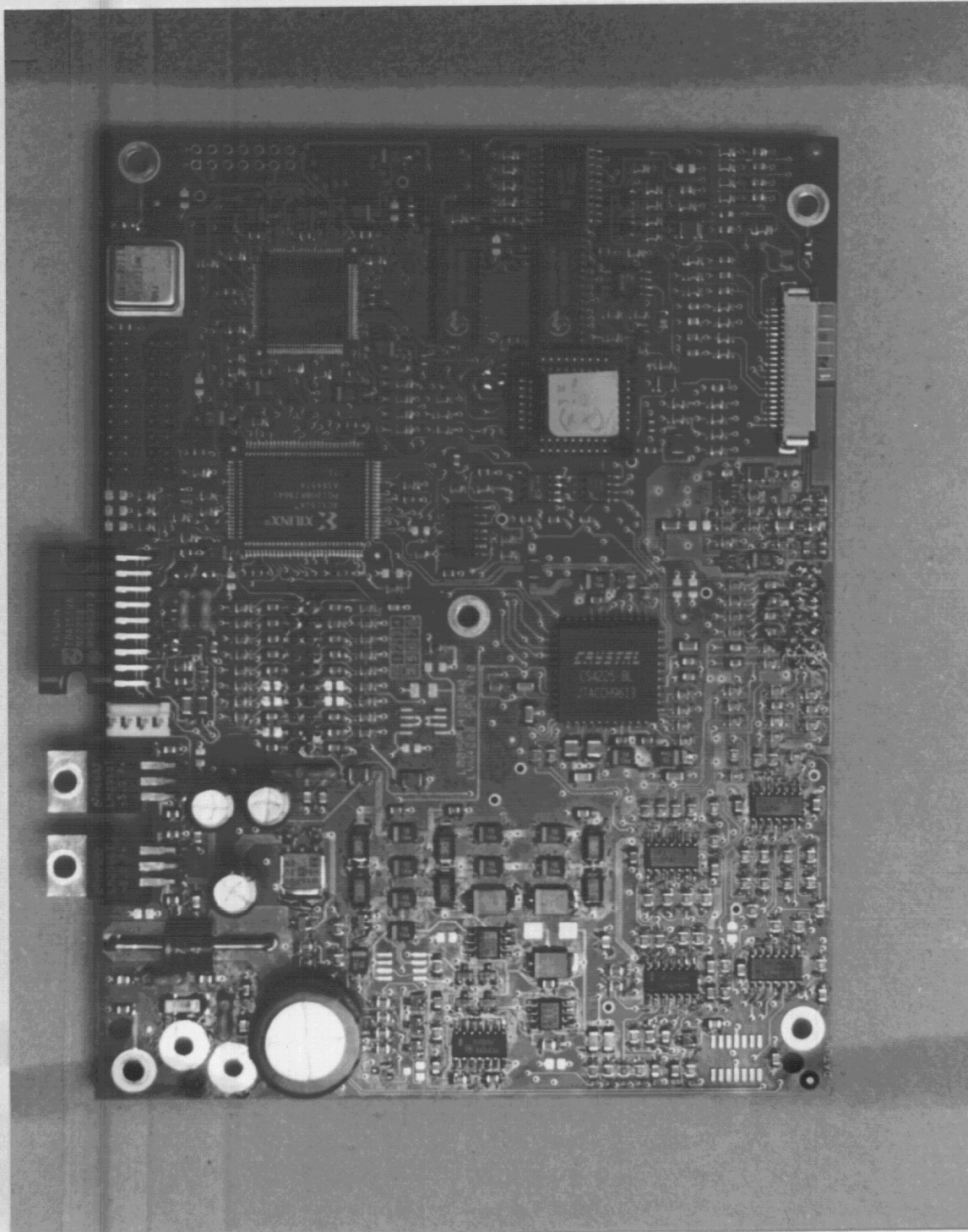
6.1 - (g) Photographs of the LMM4113D 25 watt mobile transceiver

RADIO FREQUENCY UNIT (RFU & POWER AMPLIFIER (PA) PCB UNDERSIDE VIEW



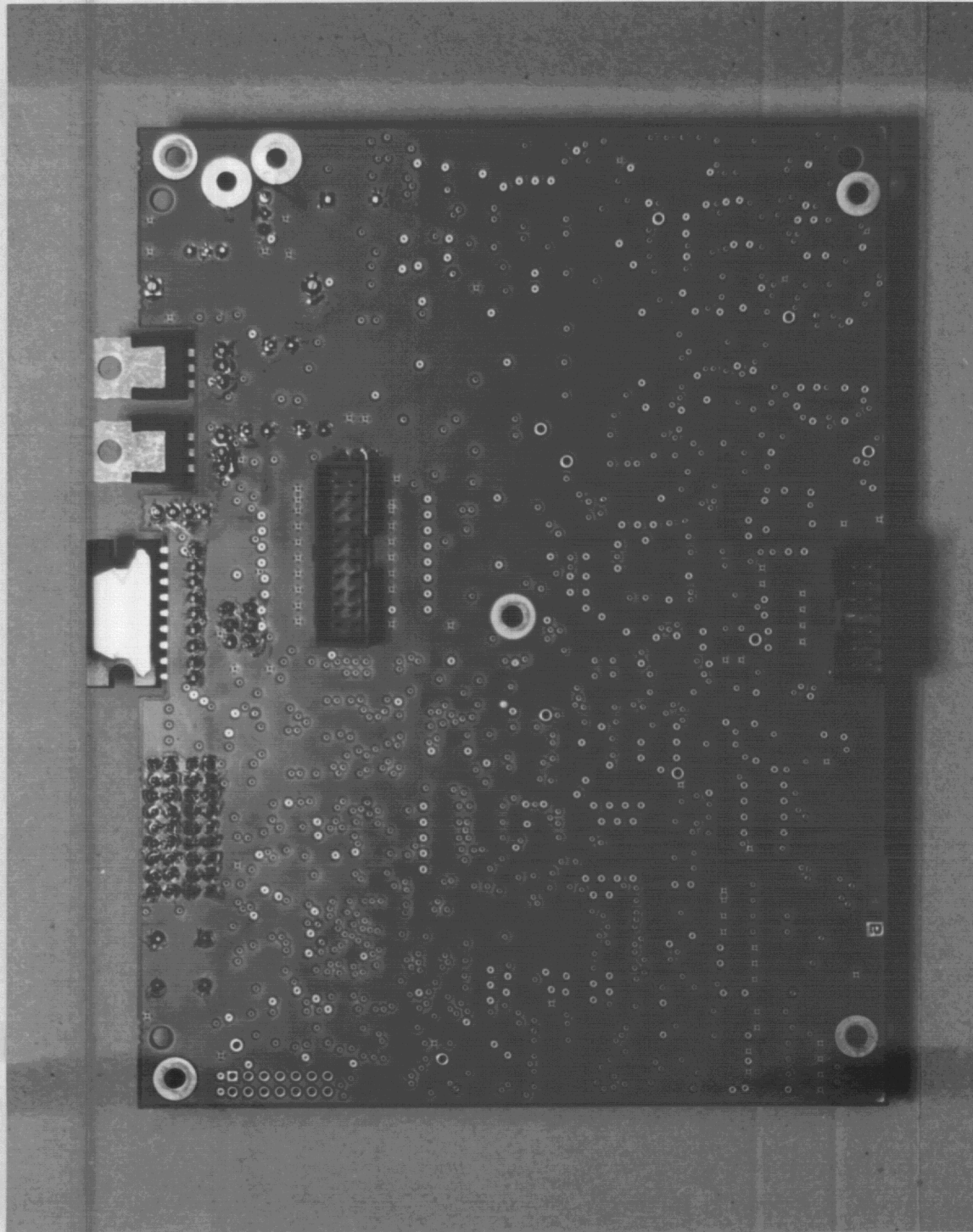
6.1 - (g) Photographs of the LMM4113D 25 watt mobile transceiver

SIGNAL PROCESSING UNIT (SPU) PCB COMPONENT SIDE VIEW



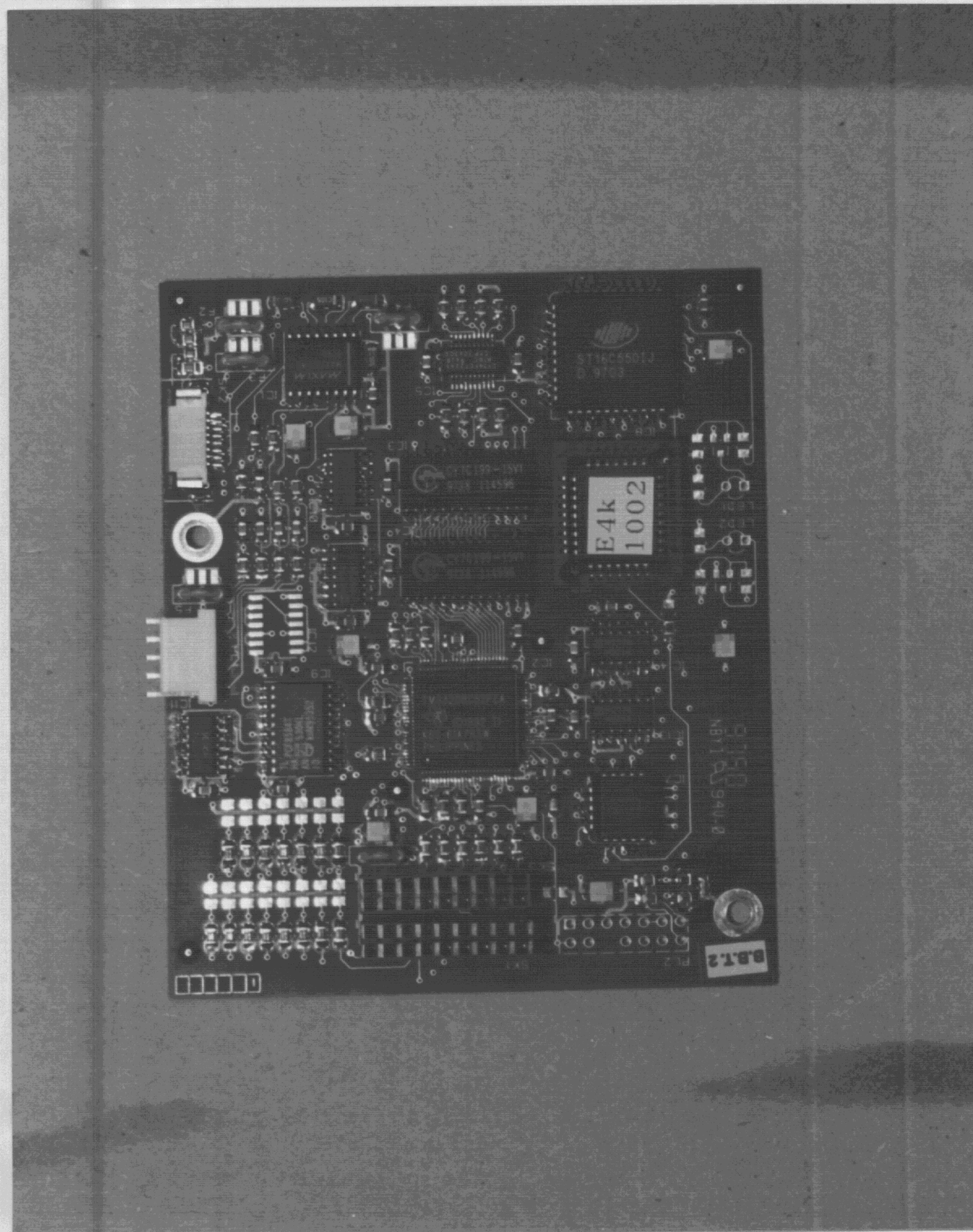
6.1 - (g) Photographs of the LMM4113D 25 watt mobile transceiver

SIGNAL PROCESSING UNIT (SPU) PCB UNDERSIDE VIEW



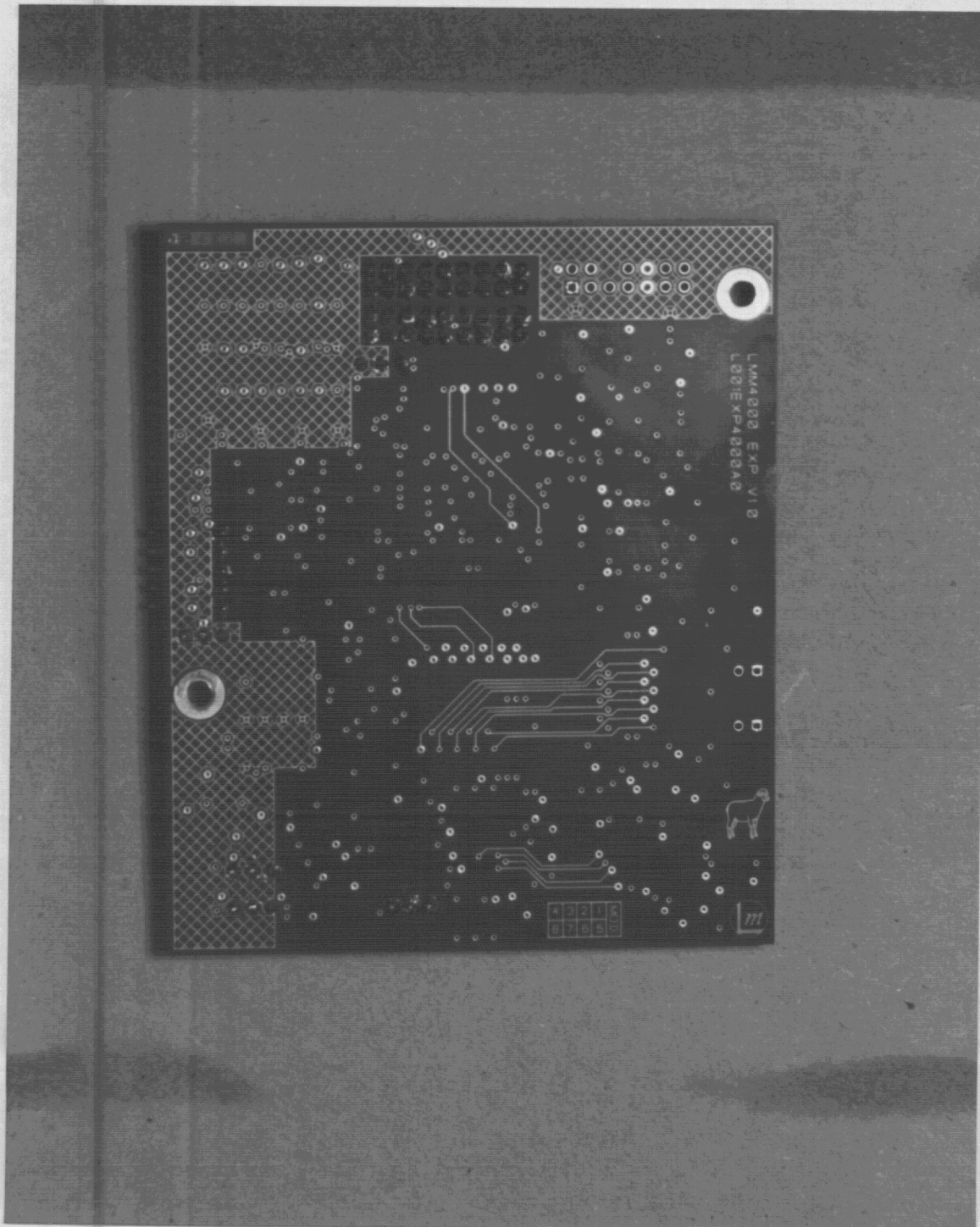
6.1 - (g) Photographs of the LMM4113D 25 watt mobile transceiver

EXPANSION (EXP) PCB COMPONENT SIDE VIEW



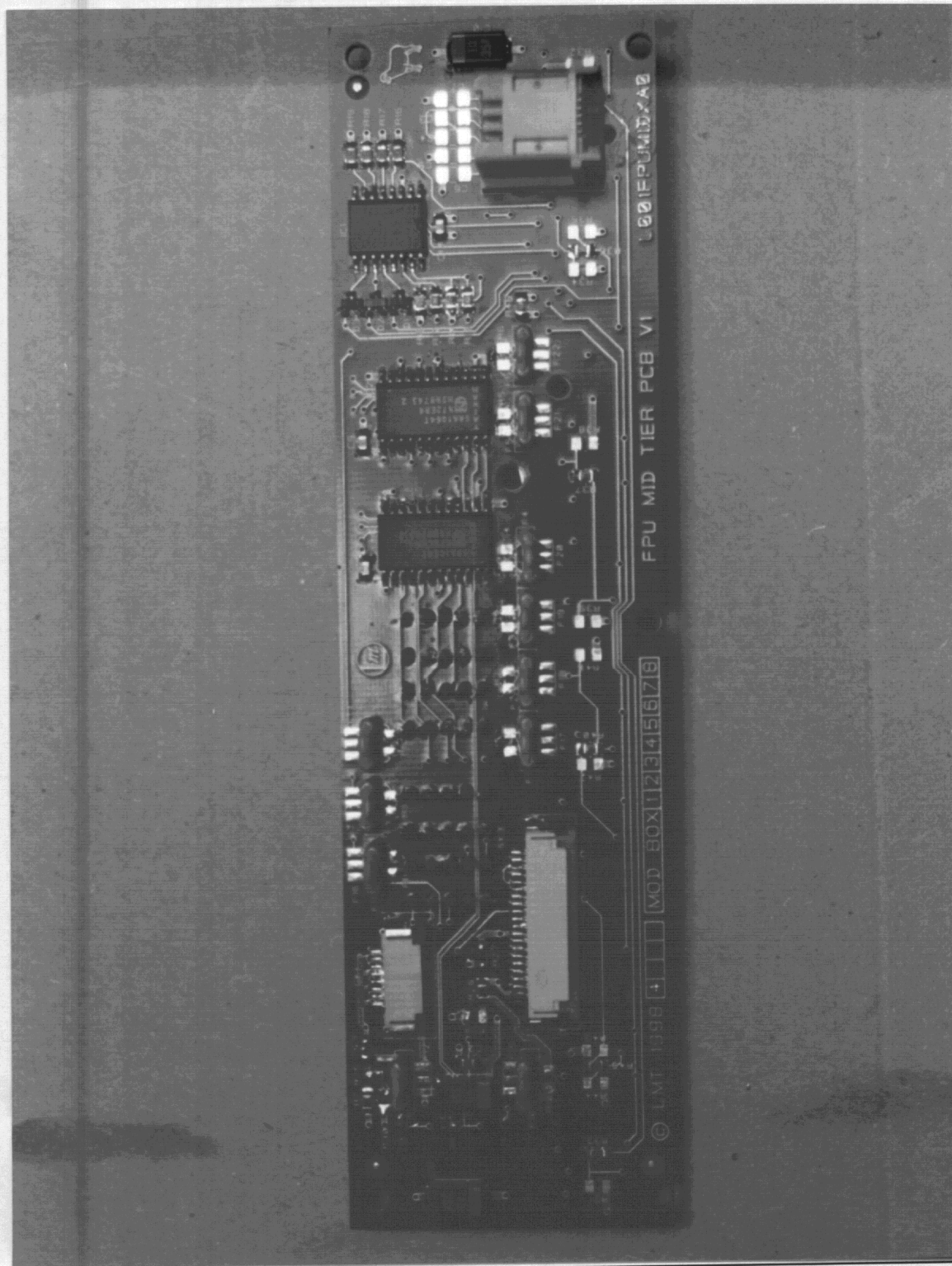
6.1 - (g) Photographs of the LMM4113D 25 watt mobile transceiver

EXPANSION (EXP) PCB UNDERSIDE VIEW



6.1 - (g) Photographs of the LMM4113D 25 watt mobile transceiver

FRONT PANEL UNIT PCB COMPONENT SIDE 1



6.1 - (g) Photographs of the LMM4113D 25 watt mobile transceiver

FRONT PANEL UNIT PCB SIDE 2

