

## DUAL MIKE WITH CBTALK APP

Download the CBTalk APP  
Android/iOs

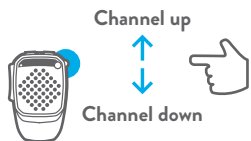


### PTT CBTALK

Push and talk into CBTalk



### CHANGE A CHANNEL ON CBTALK



### LED

- Turning ON:**  
Blue led 3 sec.
- Turning OFF:**  
Red led 3 sec.
- Pairing:**  
Red and blue leds alternated
- Smartphone paired to Dual Mike:**  
Blue led blinking
- Smartphone's pairing not successful:** red led blinking

### LIGHT RING

- Default color:**  
Steady blue (it will be set through the CBTalk APP)
- Incoming call:**  
Steady white
- Low battery:**  
blinking red
- PTT CB pressed:**  
Steady yellow



Prodotto o importato da:  
**CTE INTERNATIONAL srl**  
Via. R.Sevardi 7 42124 Reggio Emilia - Italia.  
Prima dell'uso leggere attentamente le istruzioni.

Produced or imported by:  
**CTE INTERNATIONAL srl**  
Via. R.Sevardi 7 42124 Reggio Emilia - Italy.  
Read the instructions carefully before installation and use.

Vertrieb durch: **ALAN ELECTRONICS GmbH**  
Daimlerstraße 1K - D-63303 Dreieich Deutschland.  
Vor Benutzung Bedienungsanleitung beachten.

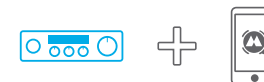
Importado por: **MIDLAND IBERIA, SA**  
C/Cobalt, 48 - 08940 Cornellà de Llobregat, Barcelona - España.  
Antes de utilizar, lea atentamente el manual de uso.

Importé par: **ALAN FRANCE S.A.R.L.**  
5, Rue Ferrie, Zac les Portes du Vexin 95300 Ennery - France.  
Avant l'utilisation, lire les instructions.

To download the complete user manual and for information about the warranty  
please visit [www.midlandeurope.com](http://www.midlandeurope.com)



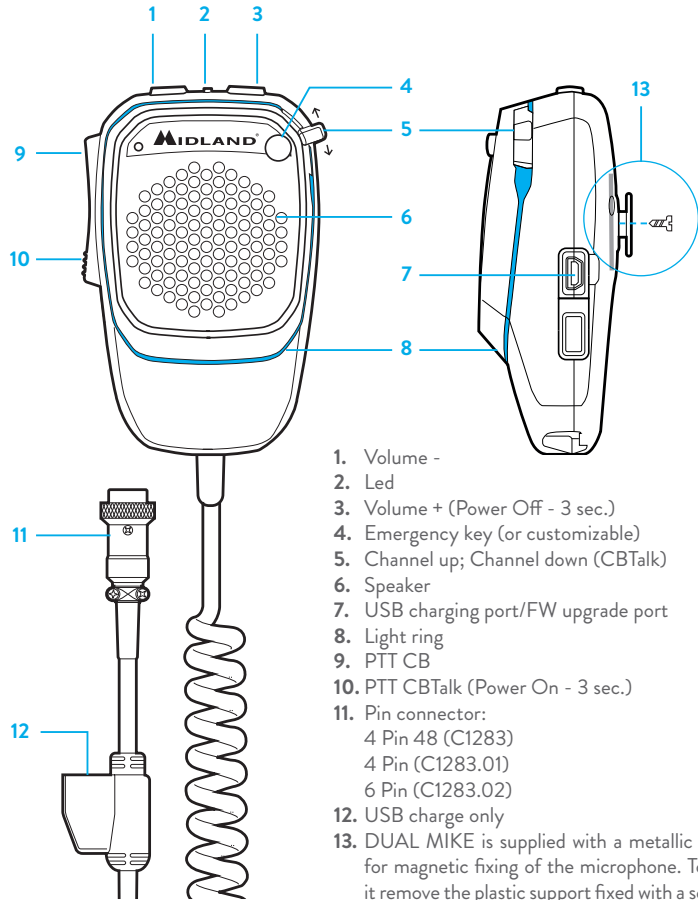
# CB MICROPHONE DUALMIKE



QUICK GUIDE

EN

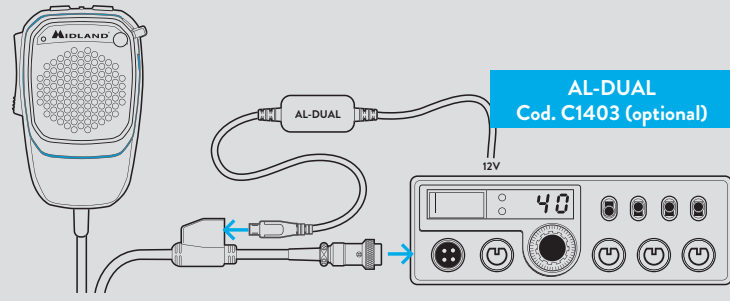
## DUALMIKE OVERVIEW



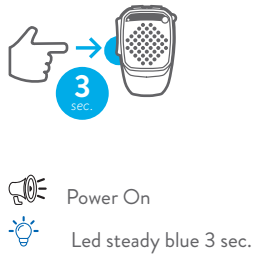
1. Volume -
2. Led
3. Volume + (Power Off - 3 sec.)
4. Emergency key (or customizable)
5. Channel up; Channel down (CBTalk)
6. Speaker
7. USB charging port/FW upgrade port
8. Light ring
9. PTT CB
10. PTT CBTalk (Power On - 3 sec.)
11. Pin connector:  
4 Pin 48 (C1283)  
4 Pin (C1283.01)  
6 Pin (C1283.02)
12. USB charge only
13. DUAL MIKE is supplied with a metallic plate for magnetic fixing of the microphone. To use it remove the plastic support fixed with a screw.

## GETTING STARTED

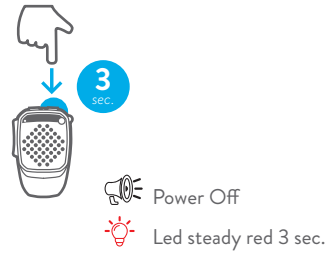
Remove the standard microphone supplied with your transceiver and plug-in DUALMIKE



### POWER ON



### POWER OFF



### USING DUAL MIKE WITH YOUR CB RADIO



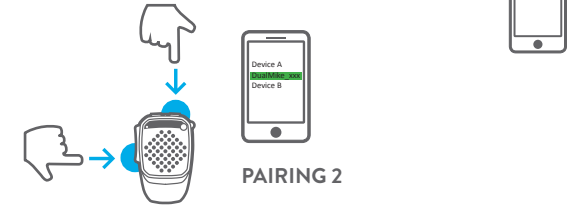
#### PTT CB

Press and talk towards the microphone

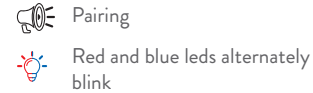


## USING DUAL MIKE WITH SMARTPHONES

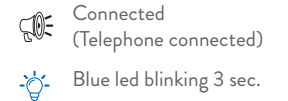
**3 sec.**  
**PRESS TOGETHER**



### PAIRING 1



### PAIRING 2



## HAND-FREE PHONE CALLS



To answer/to end a call



To reject an incoming call



To make a voice dial

## AUDIO VOLUME



NOTE: This equipment has been tested and found to comply with the limits for a Class B digital device, pursuant to part 15 of the FCC Rules. These limits are designed to provide reasonable protection against harmful interference in a residential installation. This equipment generates uses and can radiate radio frequency energy and, if not installed and used in accordance with the instructions, may cause harmful interference to radio communications. However, there is no guarantee that interference will not occur in a particular installation. If this equipment does cause harmful interference to radio or television reception, which can be determined by turning the equipment off and on, the user is encouraged to try to correct the interference by one or more of the following measures:

- Reorient or relocate the receiving antenna.
- Increase the separation between the equipment and receiver.
- Connect the equipment into an outlet on a circuit different from that to which the receiver is connected.
- Consult the dealer or an experienced radio/TV technician for help

Changes or modifications not expressly approved by the party responsible for compliance could void the user's authority to operate the equipment.

This device complies with Part 15 of the FCC Rules. Operation is subject to the following two conditions:

(1) this device may not cause harmful interference, and (2) this device must accept any interference received, including interference that may cause undesired operation.

[This device contains licence-exempt transmitter(s)/receiver(s) that comply with Innovation, Science and Economic Development Canada's licence-exempt RSS(s). Operation is subject to the following two conditions:

- (1) This device may not cause interference.
- (2) This device must accept any interference, including interference that may cause undesired operation of the device.

L'émetteur/récepteur exempt de licence contenu dans le présent appareil est conforme aux CNR d'Innovation, Sciences et Développement économique Canada applicables aux appareils radio exempts de licence. L'exploitation est autorisée aux deux conditions suivantes :

- (1) L' appareil ne doit pas produire de brouillage;
- (2) L' appareil doit accepter tout brouillage radioélectrique subi, même si le brouillage est susceptible d' en compromettre le fonctionnement.