

Date: 1 October 2015

Federal Communication Commission
EQUIPMENT APPROVAL SERVICES
P.O. Box 358315
Pittsburgh, PA 15251-5315

ATTN: Authorization and Evaluation Division
PER: Internal Photographs
RE: K6KJetWave

JETWAVE INTERNAL PHOTOGRAPHS

Enclosed in this document are internal photographs of all electronic assemblies of the JetWave™ Aircraft Earth Station which supports Inmarsat Global Xpress Aviation data services.

EMS Technologies Canada Ltd.

CONFIDENTIAL, UNPUBLISHED PROPERTY OF ONE OR MORE OF THE FOLLOWING - EMS TECHNOLOGIES CANADA, LTD., FORMATION INC., SKY CONNECT LLC (COLLECTIVELY "EMS AVIATION").

USE AND DISTRIBUTION LIMITED SOLELY TO AUTHORIZED PERSONNEL

The use, disclosure, reproduction, modification, transfer or transmittal of this work for any purpose, in any form, or by any means without the prior written permission of EMS Aviation is strictly prohibited. This document does not contain technical data as defined in the International Traffic and Arms Regulations (ITAR) 22 CFR 120-130.

Modman

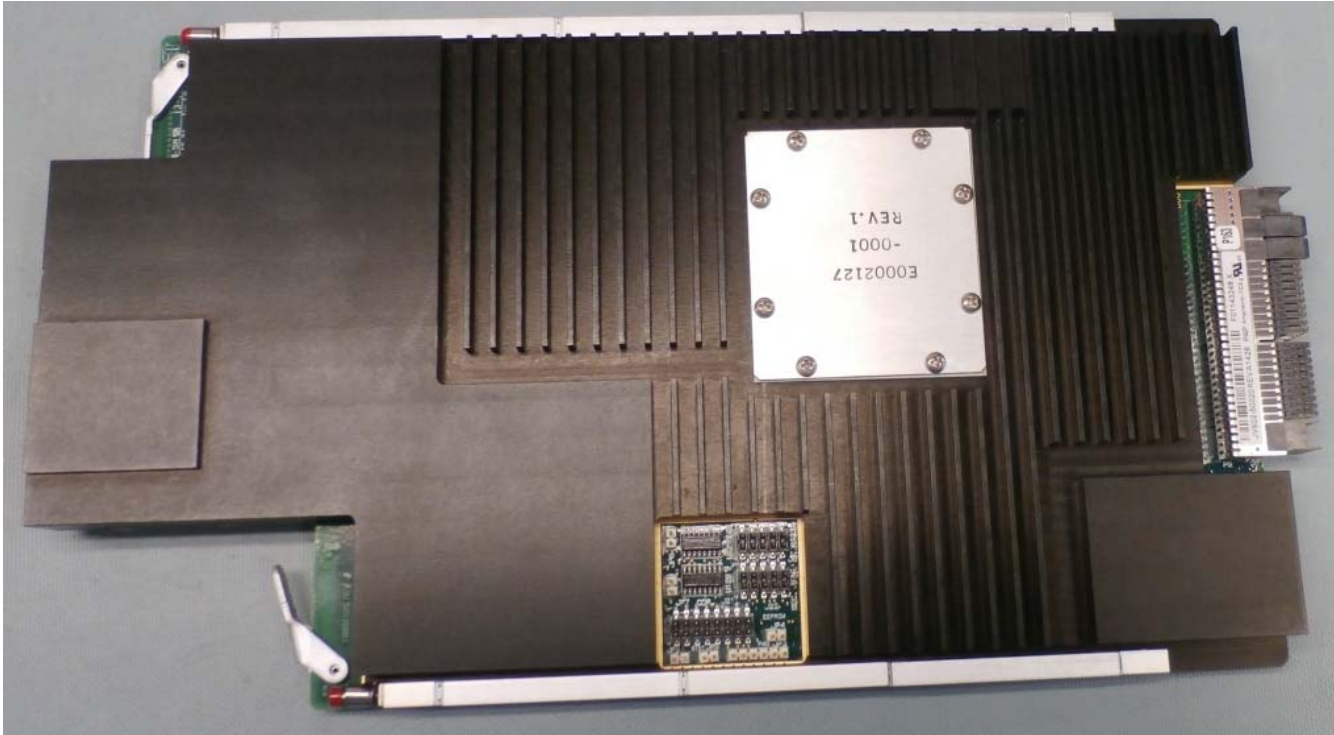


Figure 1 ModMan: 02300069 ACM Front –with RF cans

CONFIDENTIAL, UNPUBLISHED PROPERTY OF ONE OR MORE OF THE FOLLOWING - EMS TECHNOLOGIES CANADA, LTD., FORMATION INC., SKY CONNECT LLC (COLLECTIVELY "EMS AVIATION").

USE AND DISTRIBUTION LIMITED SOLELY TO AUTHORIZED PERSONNEL

The use, disclosure, reproduction, modification, transfer or transmittal of this work for any purpose, in any form, or by any means without the prior written permission of EMS Aviation is strictly prohibited. This document does not contain technical data as defined in the International Traffic and Arms Regulations (ITAR) 22 CFR 120-130.

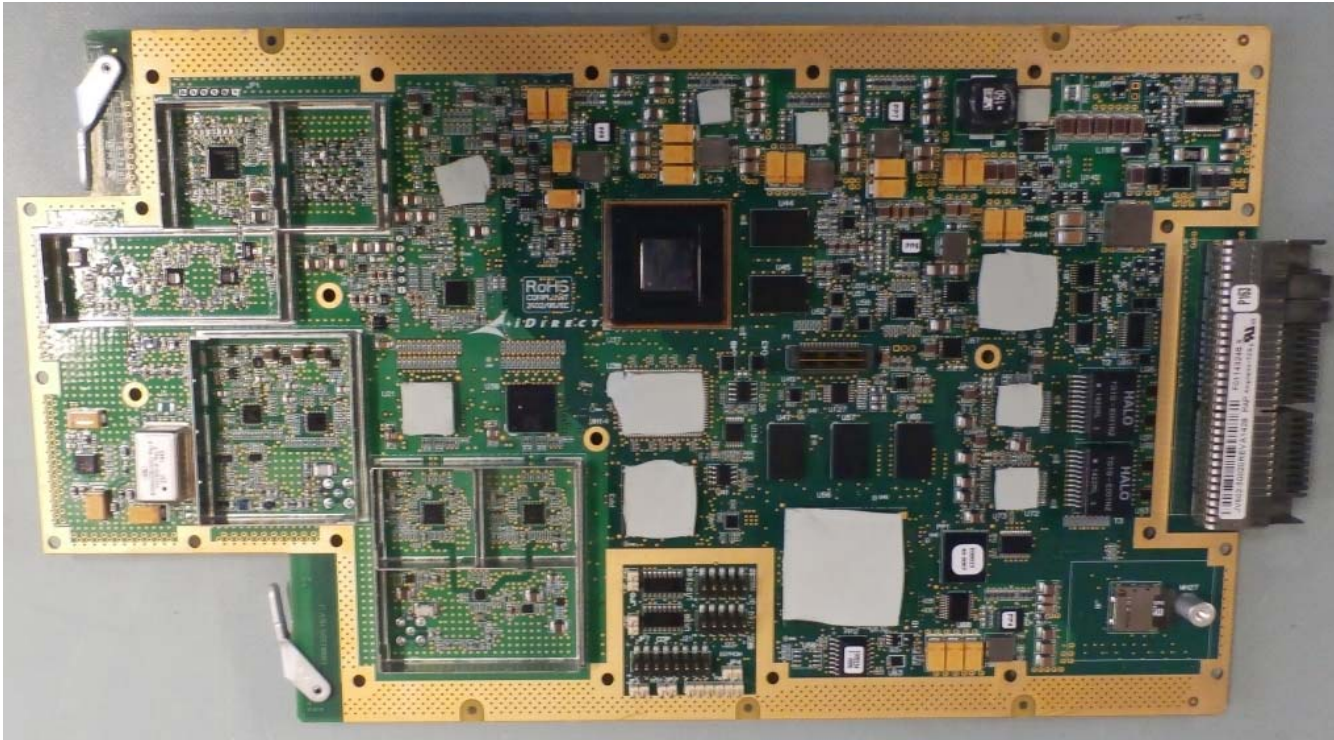


Figure 2 ModMan: 02300069 ACM Front - without RF cans

CONFIDENTIAL, UNPUBLISHED PROPERTY OF ONE OR MORE OF THE FOLLOWING - EMS TECHNOLOGIES CANADA, LTD., FORMATION INC., SKY CONNECT LLC (COLLECTIVELY "EMS AVIATION").

USE AND DISTRIBUTION LIMITED SOLELY TO AUTHORIZED PERSONNEL

The use, disclosure, reproduction, modification, transfer or transmittal of this work for any purpose, in any form, or by any means without the prior written permission of EMS Aviation is strictly prohibited. This document does not contain technical data as defined in the International Traffic and Arms Regulations (ITAR) 22 CFR 120-130.



Figure 3 Modman: 02300069 ACM Back

CONFIDENTIAL, UNPUBLISHED PROPERTY OF ONE OR MORE OF THE FOLLOWING - EMS TECHNOLOGIES CANADA, LTD., FORMATION INC., SKY CONNECT LLC (COLLECTIVELY "EMS AVIATION").

USE AND DISTRIBUTION LIMITED SOLELY TO AUTHORIZED PERSONNEL

The use, disclosure, reproduction, modification, transfer or transmittal of this work for any purpose, in any form, or by any means without the prior written permission of EMS Aviation is strictly prohibited. This document does not contain technical data as defined in the International Traffic and Arms Regulations (ITAR) 22 CFR 120-130.

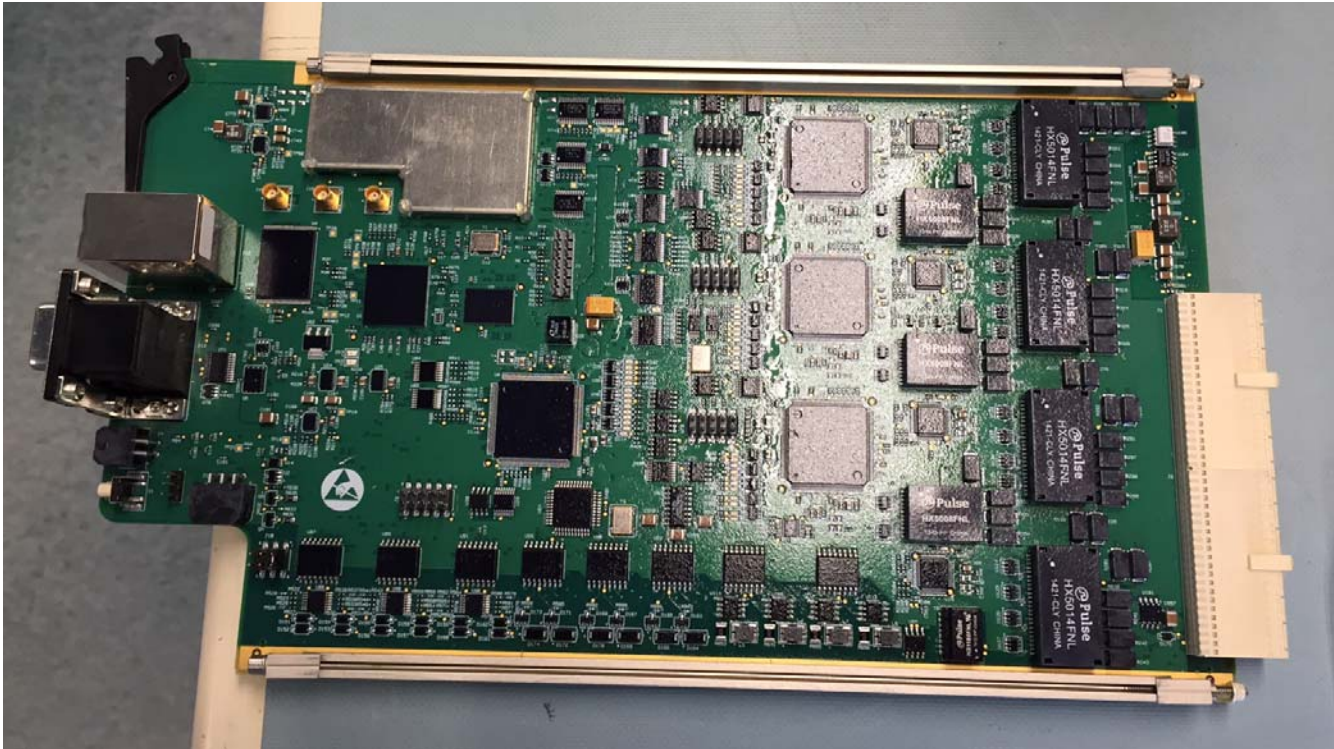


Figure 4 Modman: 90401877 Control Router Card Top

CONFIDENTIAL, UNPUBLISHED PROPERTY OF ONE OR MORE OF THE FOLLOWING - EMS TECHNOLOGIES CANADA, LTD., FORMATION INC., SKY CONNECT LLC (COLLECTIVELY "EMS AVIATION").

USE AND DISTRIBUTION LIMITED SOLELY TO AUTHORIZED PERSONNEL

The use, disclosure, reproduction, modification, transfer or transmittal of this work for any purpose, in any form, or by any means without the prior written permission of EMS Aviation is strictly prohibited. This document does not contain technical data as defined in the International Traffic and Arms Regulations (ITAR) 22 CFR 120-130.

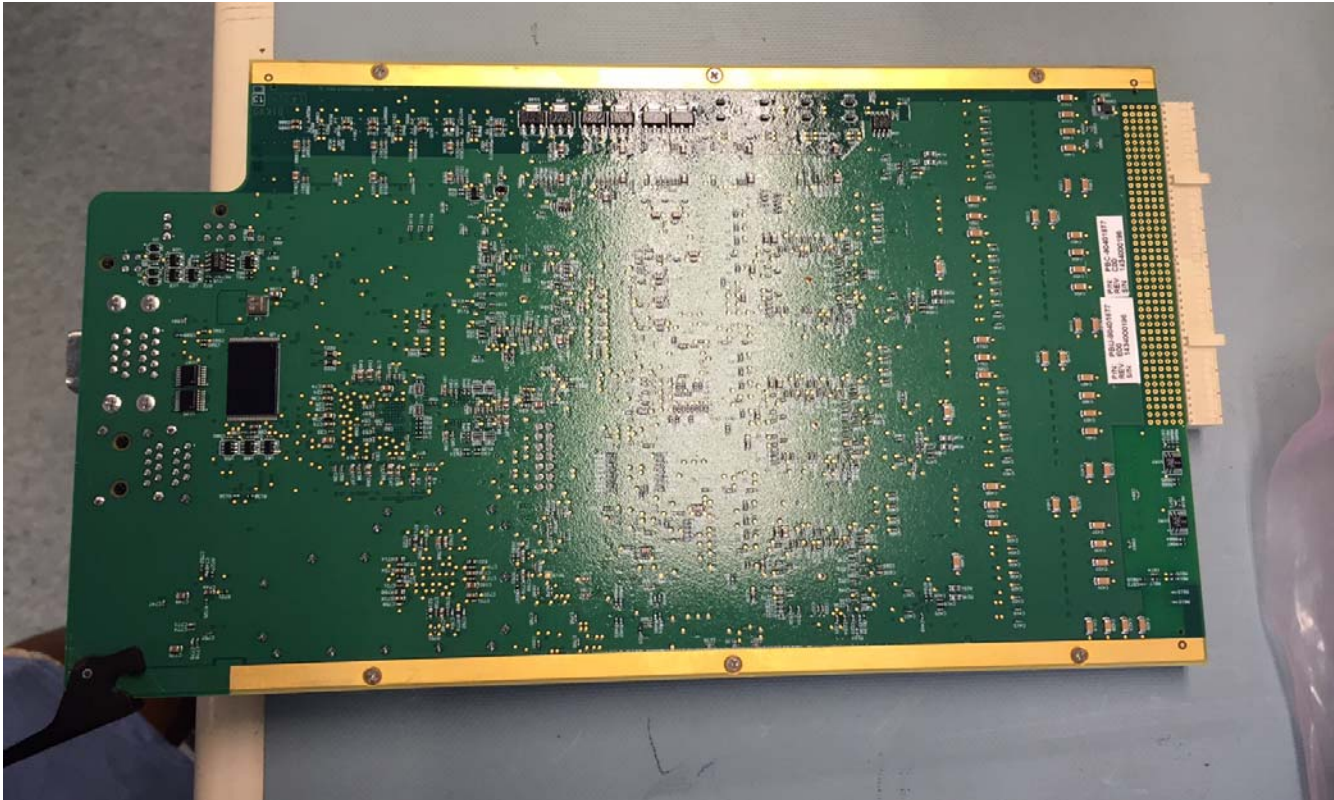


Figure 5 Modman: 90401877 Control Router Card Bottom

CONFIDENTIAL, UNPUBLISHED PROPERTY OF ONE OR MORE OF THE FOLLOWING - EMS TECHNOLOGIES CANADA, LTD., FORMATION INC., SKY CONNECT LLC (COLLECTIVELY "EMS AVIATION").

USE AND DISTRIBUTION LIMITED SOLELY TO AUTHORIZED PERSONNEL

The use, disclosure, reproduction, modification, transfer or transmittal of this work for any purpose, in any form, or by any means without the prior written permission of EMS Aviation is strictly prohibited. This document does not contain technical data as defined in the International Traffic and Arms Regulations (ITAR) 22 CFR 120-130.

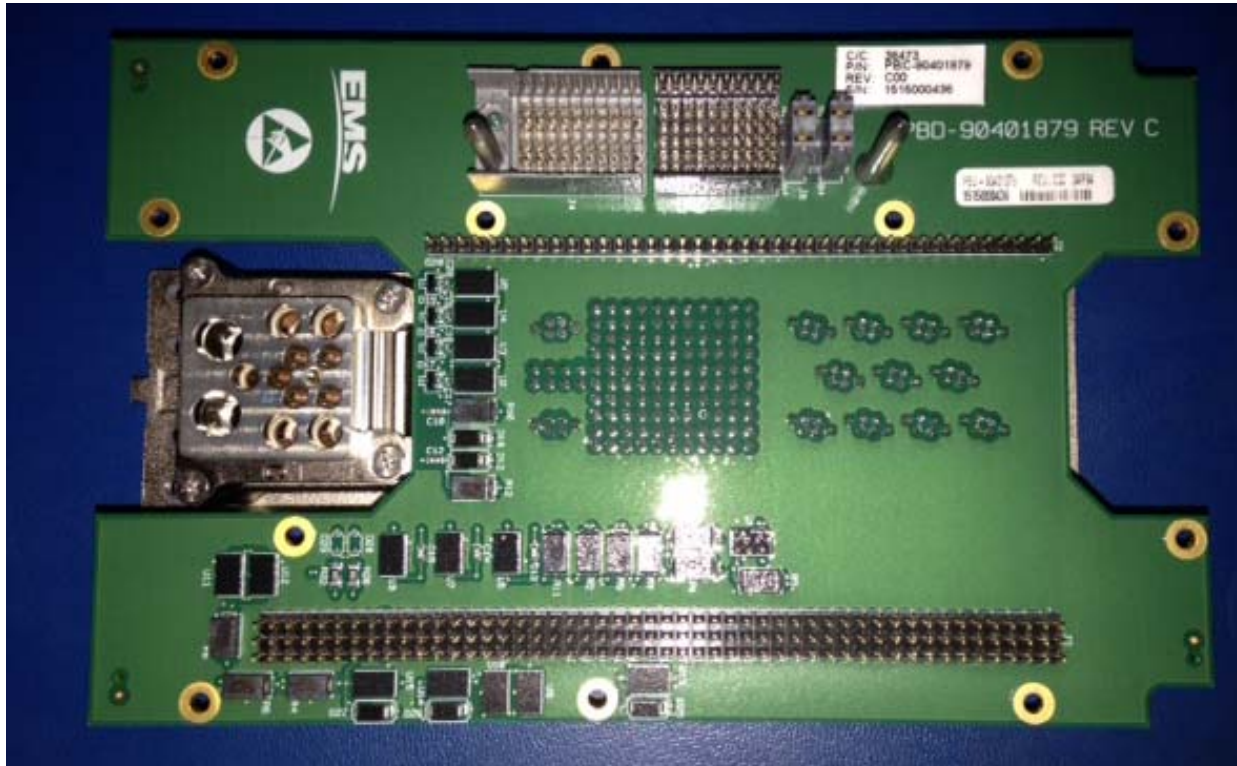


Figure 6 Modman: 90401879 ARINC BP Top

CONFIDENTIAL, UNPUBLISHED PROPERTY OF ONE OR MORE OF THE FOLLOWING - EMS TECHNOLOGIES CANADA, LTD., FORMATION INC., SKY CONNECT LLC (COLLECTIVELY "EMS AVIATION").

USE AND DISTRIBUTION LIMITED SOLELY TO AUTHORIZED PERSONNEL

The use, disclosure, reproduction, modification, transfer or transmittal of this work for any purpose, in any form, or by any means without the prior written permission of EMS Aviation is strictly prohibited. This document does not contain technical data as defined in the International Traffic and Arms Regulations (ITAR) 22 CFR 120-130.

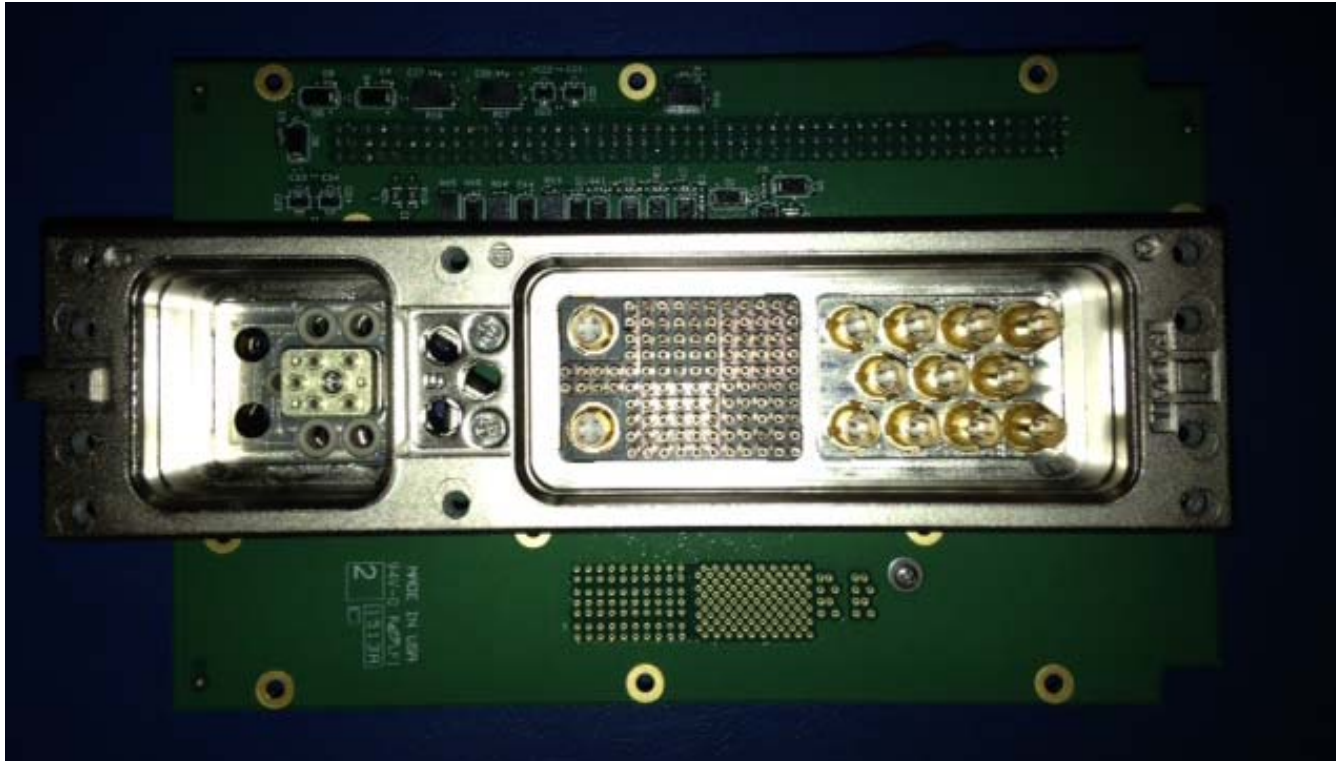


Figure 7 Modman: 90401879 ARINC BP Bottom

CONFIDENTIAL, UNPUBLISHED PROPERTY OF ONE OR MORE OF THE FOLLOWING - EMS TECHNOLOGIES CANADA, LTD., FORMATION INC., SKY CONNECT LLC (COLLECTIVELY "EMS AVIATION").

USE AND DISTRIBUTION LIMITED SOLELY TO AUTHORIZED PERSONNEL

The use, disclosure, reproduction, modification, transfer or transmittal of this work for any purpose, in any form, or by any means without the prior written permission of EMS Aviation is strictly prohibited. This document does not contain technical data as defined in the International Traffic and Arms Regulations (ITAR) 22 CFR 120-130.

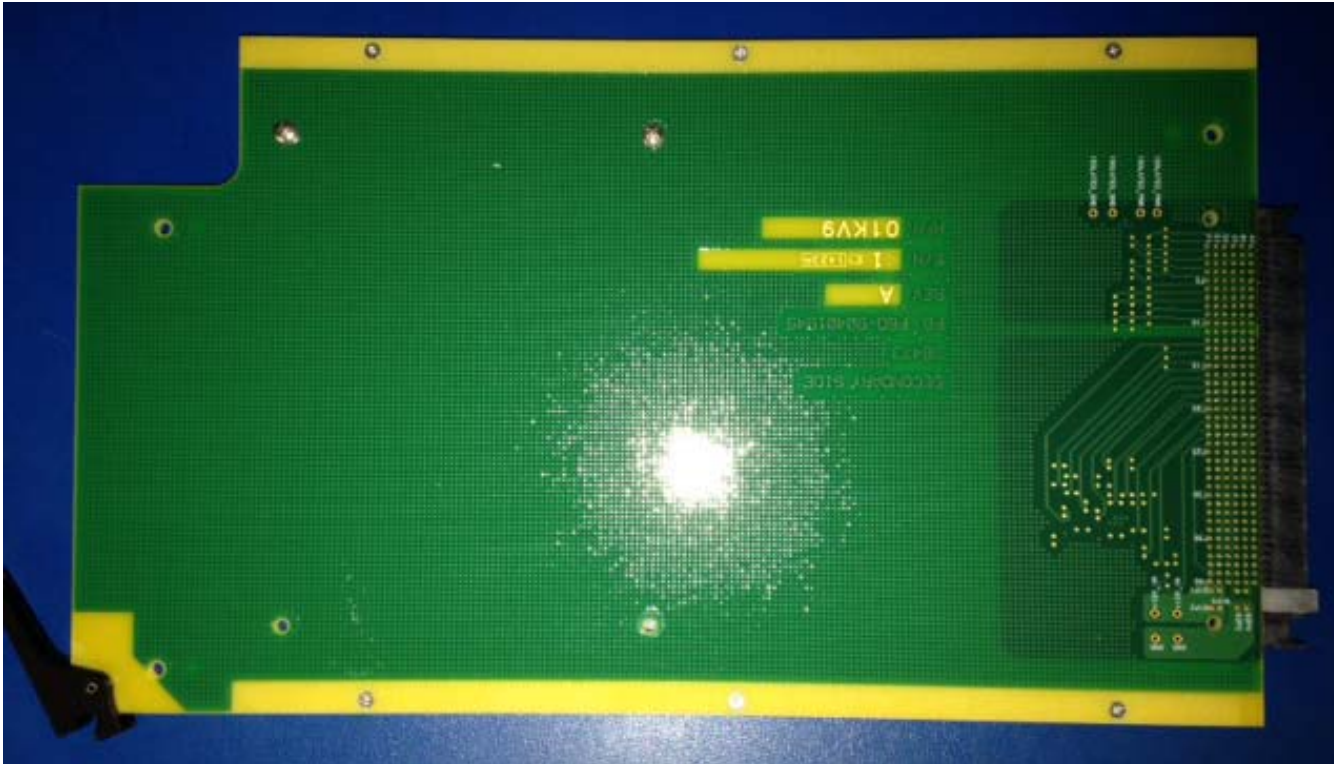


Figure 8 Modman: 90401945 Dummy Board Top

CONFIDENTIAL, UNPUBLISHED PROPERTY OF ONE OR MORE OF THE FOLLOWING - EMS TECHNOLOGIES CANADA, LTD., FORMATION INC., SKY CONNECT LLC (COLLECTIVELY "EMS AVIATION").

USE AND DISTRIBUTION LIMITED SOLELY TO AUTHORIZED PERSONNEL

The use, disclosure, reproduction, modification, transfer or transmittal of this work for any purpose, in any form, or by any means without the prior written permission of EMS Aviation is strictly prohibited. This document does not contain technical data as defined in the International Traffic and Arms Regulations (ITAR) 22 CFR 120-130.



Figure 9 Modman: 90401945 Dummy Board Bottom

CONFIDENTIAL, UNPUBLISHED PROPERTY OF ONE OR MORE OF THE FOLLOWING - EMS TECHNOLOGIES CANADA, LTD., FORMATION INC., SKY CONNECT LLC (COLLECTIVELY “EMS AVIATION”).

USE AND DISTRIBUTION LIMITED SOLELY TO AUTHORIZED PERSONNEL

The use, disclosure, reproduction, modification, transfer or transmittal of this work for any purpose, in any form, or by any means without the prior written permission of EMS Aviation is strictly prohibited. This document does not contain technical data as defined in the International Traffic and Arms Regulations (ITAR) 22 CFR 120-130.



Figure 10 Modman: 90402117 Secondary Board Top

CONFIDENTIAL, UNPUBLISHED PROPERTY OF ONE OR MORE OF THE FOLLOWING - EMS TECHNOLOGIES CANADA, LTD., FORMATION INC., SKY CONNECT LLC (COLLECTIVELY "EMS AVIATION").

USE AND DISTRIBUTION LIMITED SOLELY TO AUTHORIZED PERSONNEL

The use, disclosure, reproduction, modification, transfer or transmittal of this work for any purpose, in any form, or by any means without the prior written permission of EMS Aviation is strictly prohibited. This document does not contain technical data as defined in the International Traffic and Arms Regulations (ITAR) 22 CFR 120-130.

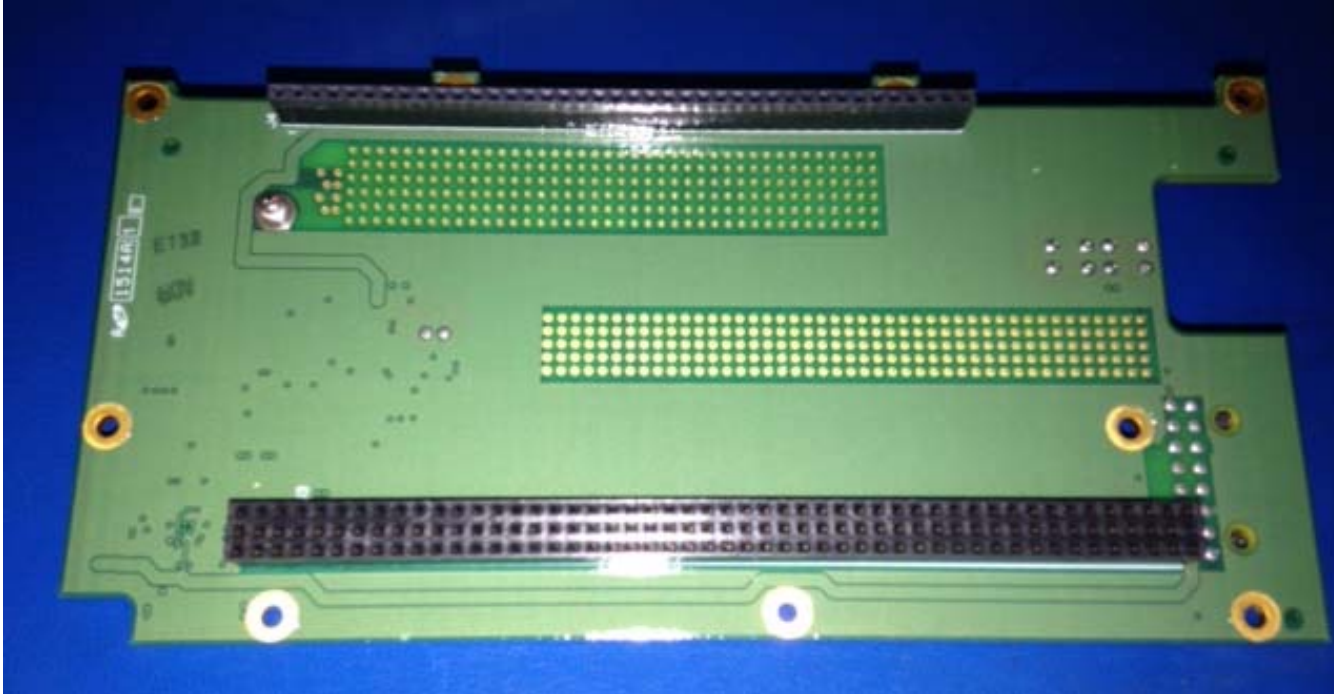


Figure 11 Modman: 904021117 Secondary Board Bottom

CONFIDENTIAL, UNPUBLISHED PROPERTY OF ONE OR MORE OF THE FOLLOWING - EMS TECHNOLOGIES CANADA, LTD., FORMATION INC., SKY CONNECT LLC (COLLECTIVELY "EMS AVIATION").

USE AND DISTRIBUTION LIMITED SOLELY TO AUTHORIZED PERSONNEL

The use, disclosure, reproduction, modification, transfer or transmittal of this work for any purpose, in any form, or by any means without the prior written permission of EMS Aviation is strictly prohibited. This document does not contain technical data as defined in the International Traffic and Arms Regulations (ITAR) 22 CFR 120-130.



Figure 12 Modman: 90400206 PSU Front

CONFIDENTIAL, UNPUBLISHED PROPERTY OF ONE OR MORE OF THE FOLLOWING - EMS TECHNOLOGIES CANADA, LTD., FORMATION INC., SKY CONNECT LLC (COLLECTIVELY "EMS AVIATION").

USE AND DISTRIBUTION LIMITED SOLELY TO AUTHORIZED PERSONNEL

The use, disclosure, reproduction, modification, transfer or transmittal of this work for any purpose, in any form, or by any means without the prior written permission of EMS Aviation is strictly prohibited. This document does not contain technical data as defined in the International Traffic and Arms Regulations (ITAR) 22 CFR 120-130.

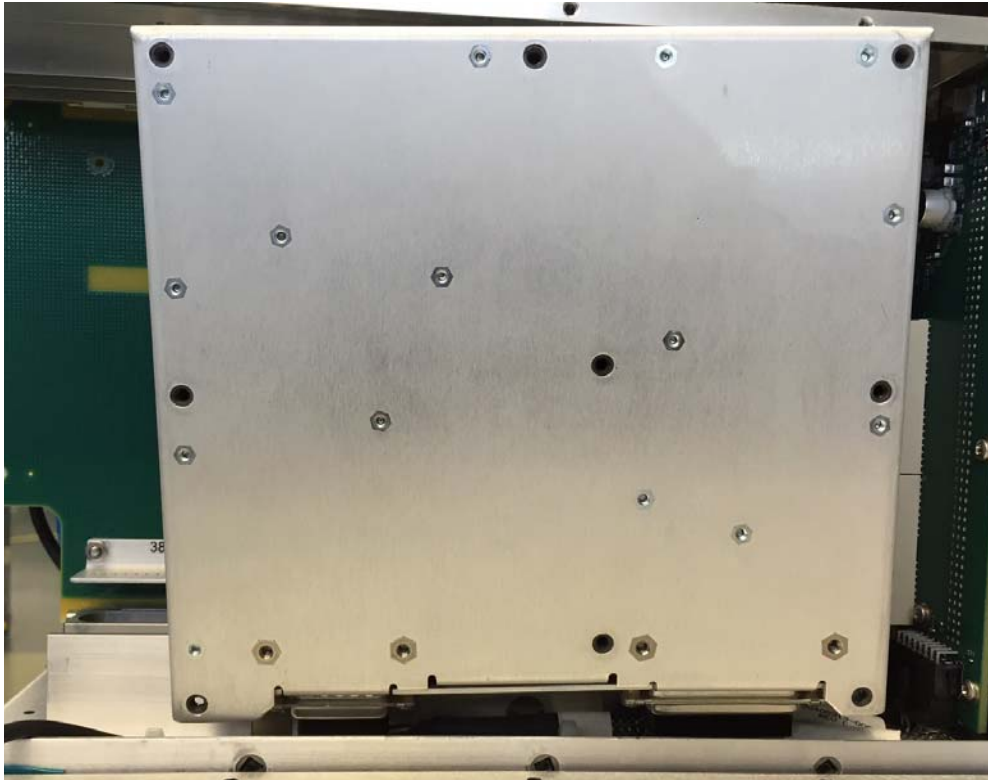


Figure 13 Modman: 90400206 PSU Back

CONFIDENTIAL, UNPUBLISHED PROPERTY OF ONE OR MORE OF THE FOLLOWING - EMS TECHNOLOGIES CANADA, LTD., FORMATION INC., SKY CONNECT LLC (COLLECTIVELY "EMS AVIATION").

USE AND DISTRIBUTION LIMITED SOLELY TO AUTHORIZED PERSONNEL

The use, disclosure, reproduction, modification, transfer or transmittal of this work for any purpose, in any form, or by any means without the prior written permission of EMS Aviation is strictly prohibited. This document does not contain technical data as defined in the International Traffic and Arms Regulations (ITAR) 22 CFR 120-130.



Figure 14 Modman: 90401215 Surge Protector Top

CONFIDENTIAL, UNPUBLISHED PROPERTY OF ONE OR MORE OF THE FOLLOWING - EMS TECHNOLOGIES CANADA, LTD., FORMATION INC., SKY CONNECT LLC (COLLECTIVELY "EMS AVIATION").

USE AND DISTRIBUTION LIMITED SOLELY TO AUTHORIZED PERSONNEL

The use, disclosure, reproduction, modification, transfer or transmittal of this work for any purpose, in any form, or by any means without the prior written permission of EMS Aviation is strictly prohibited. This document does not contain technical data as defined in the International Traffic and Arms Regulations (ITAR) 22 CFR 120-130.



Figure 15 Modman: 90401215 Surge Protector Bottom

CONFIDENTIAL, UNPUBLISHED PROPERTY OF ONE OR MORE OF THE FOLLOWING - EMS TECHNOLOGIES CANADA, LTD., FORMATION INC., SKY CONNECT LLC (COLLECTIVELY "EMS AVIATION").

USE AND DISTRIBUTION LIMITED SOLELY TO AUTHORIZED PERSONNEL

The use, disclosure, reproduction, modification, transfer or transmittal of this work for any purpose, in any form, or by any means without the prior written permission of EMS Aviation is strictly prohibited. This document does not contain technical data as defined in the International Traffic and Arms Regulations (ITAR) 22 CFR 120-130.

APM



Figure 16 APM: 90401612 Circuit card - Top

CONFIDENTIAL, UNPUBLISHED PROPERTY OF ONE OR MORE OF THE FOLLOWING - EMS TECHNOLOGIES CANADA, LTD., FORMATION INC., SKY CONNECT LLC (COLLECTIVELY "EMS AVIATION").

USE AND DISTRIBUTION LIMITED SOLELY TO AUTHORIZED PERSONNEL

The use, disclosure, reproduction, modification, transfer or transmittal of this work for any purpose, in any form, or by any means without the prior written permission of EMS Aviation is strictly prohibited. This document does not contain technical data as defined in the International Traffic and Arms Regulations (ITAR) 22 CFR 120-130.

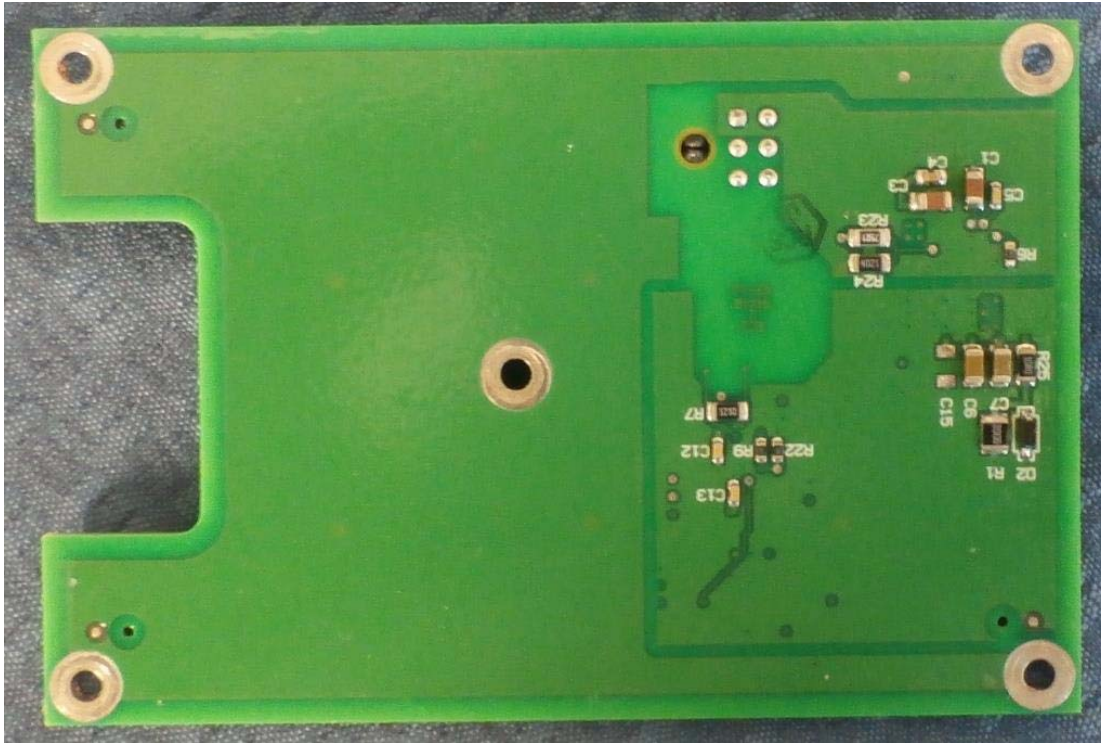


Figure 17 APM: 90401612 Circuit card -Bottom

CONFIDENTIAL, UNPUBLISHED PROPERTY OF ONE OR MORE OF THE FOLLOWING - EMS TECHNOLOGIES CANADA, LTD., FORMATION INC., SKY CONNECT LLC (COLLECTIVELY "EMS AVIATION").

USE AND DISTRIBUTION LIMITED SOLELY TO AUTHORIZED PERSONNEL

The use, disclosure, reproduction, modification, transfer or transmittal of this work for any purpose, in any form, or by any means without the prior written permission of EMS Aviation is strictly prohibited. This document does not contain technical data as defined in the International Traffic and Arms Regulations (ITAR) 22 CFR 120-130.

KANDU_[h1]

Containing:

Antenna Subsystem Controller

Power Supply –developed by a 3rd party and the internal photos shall be provided as a separate submission

CONFIDENTIAL, UNPUBLISHED PROPERTY OF ONE OR MORE OF THE FOLLOWING - EMS TECHNOLOGIES CANADA, LTD., FORMATION INC., SKY CONNECT LLC (COLLECTIVELY “EMS AVIATION”).

USE AND DISTRIBUTION LIMITED SOLELY TO AUTHORIZED PERSONNEL

The use, disclosure, reproduction, modification, transfer or transmittal of this work for any purpose, in any form, or by any means without the prior written permission of EMS Aviation is strictly prohibited. This document does not contain technical data as defined in the International Traffic and Arms Regulations (ITAR) 22 CFR 120-130.

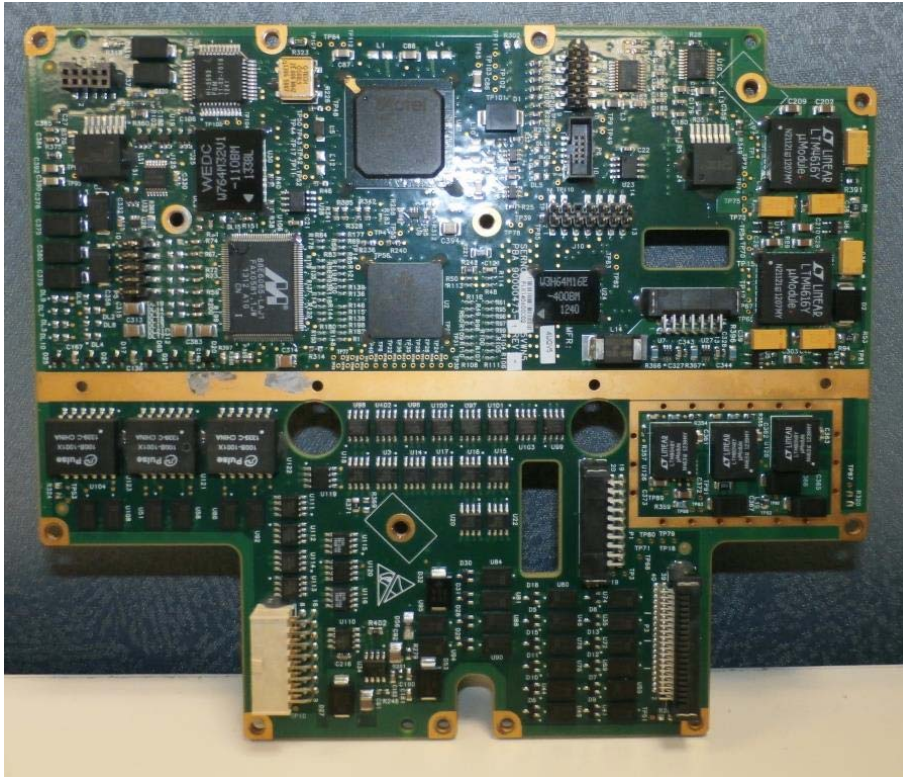


Figure 18 KANDU 9000473-1 ASC Top

CONFIDENTIAL, UNPUBLISHED PROPERTY OF ONE OR MORE OF THE FOLLOWING - EMS TECHNOLOGIES CANADA, LTD., FORMATION INC., SKY CONNECT LLC (COLLECTIVELY "EMS AVIATION").

USE AND DISTRIBUTION LIMITED SOLELY TO AUTHORIZED PERSONNEL

The use, disclosure, reproduction, modification, transfer or transmittal of this work for any purpose, in any form, or by any means without the prior written permission of EMS Aviation is strictly prohibited. This document does not contain technical data as defined in the International Traffic and Arms Regulations (ITAR) 22 CFR 120-130.

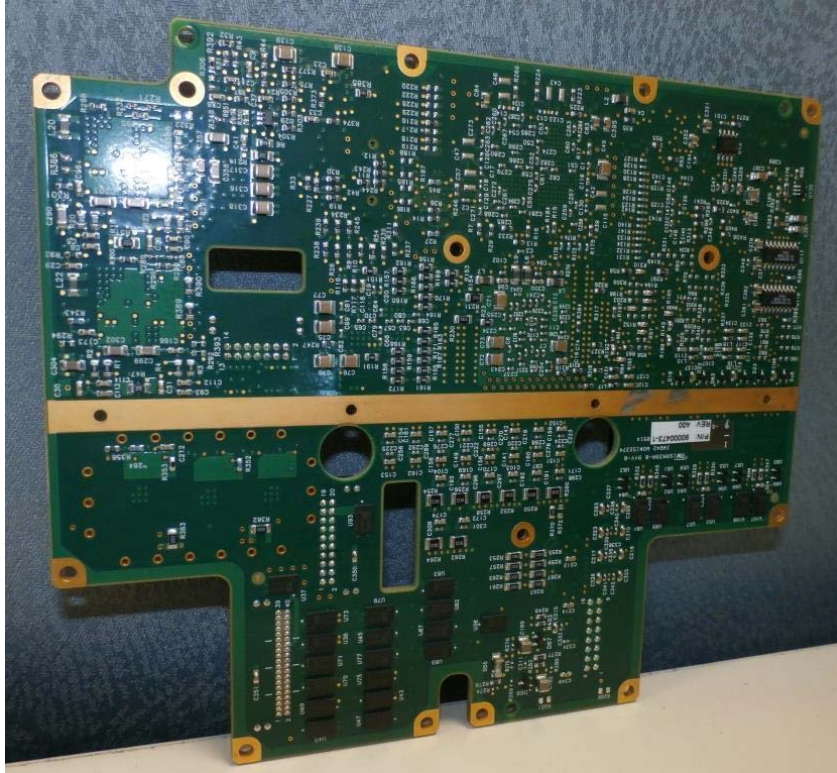


Figure 19 KANDU: 9000473-1 ASC Bottom

CONFIDENTIAL, UNPUBLISHED PROPERTY OF ONE OR MORE OF THE FOLLOWING - EMS TECHNOLOGIES CANADA, LTD., FORMATION INC., SKY CONNECT LLC (COLLECTIVELY "EMS AVIATION").

USE AND DISTRIBUTION LIMITED SOLELY TO AUTHORIZED PERSONNEL

The use, disclosure, reproduction, modification, transfer or transmittal of this work for any purpose, in any form, or by any means without the prior written permission of EMS Aviation is strictly prohibited. This document does not contain technical data as defined in the International Traffic and Arms Regulations (ITAR) 22 CFR 120-130.

KRFU

KRFU has been developed by a 3rd party and the internal photos shall be provided as a separate submission

CONFIDENTIAL, UNPUBLISHED PROPERTY OF ONE OR MORE OF THE FOLLOWING - EMS TECHNOLOGIES CANADA, LTD., FORMATION INC., SKY CONNECT LLC (COLLECTIVELY "EMS AVIATION").

USE AND DISTRIBUTION LIMITED SOLELY TO AUTHORIZED PERSONNEL

The use, disclosure, reproduction, modification, transfer or transmittal of this work for any purpose, in any form, or by any means without the prior written permission of EMS Aviation is strictly prohibited. This document does not contain technical data as defined in the International Traffic and Arms Regulations (ITAR) 22 CFR 120-130.

Fuselage Mount Antenna



Figure 20 FMA: 9000465-1 PCU Top

CONFIDENTIAL, UNPUBLISHED PROPERTY OF ONE OR MORE OF THE FOLLOWING - EMS TECHNOLOGIES CANADA, LTD., FORMATION INC., SKY CONNECT LLC (COLLECTIVELY "EMS AVIATION").

USE AND DISTRIBUTION LIMITED SOLELY TO AUTHORIZED PERSONNEL

The use, disclosure, reproduction, modification, transfer or transmittal of this work for any purpose, in any form, or by any means without the prior written permission of EMS Aviation is strictly prohibited. This document does not contain technical data as defined in the International Traffic and Arms Regulations (ITAR) 22 CFR 120-130.

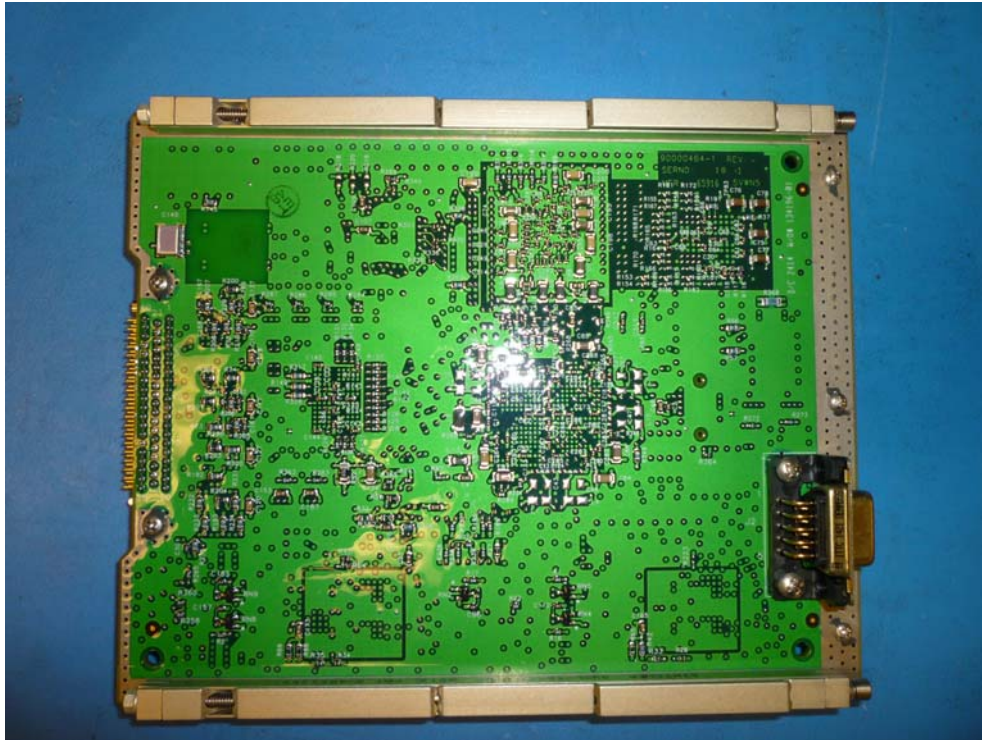


Figure 21 FMA: 9000465-1 PCU Bottom

CONFIDENTIAL, UNPUBLISHED PROPERTY OF ONE OR MORE OF THE FOLLOWING - EMS TECHNOLOGIES CANADA, LTD., FORMATION INC., SKY CONNECT LLC (COLLECTIVELY "EMS AVIATION").

USE AND DISTRIBUTION LIMITED SOLELY TO AUTHORIZED PERSONNEL

The use, disclosure, reproduction, modification, transfer or transmittal of this work for any purpose, in any form, or by any means without the prior written permission of EMS Aviation is strictly prohibited. This document does not contain technical data as defined in the International Traffic and Arms Regulations (ITAR) 22 CFR 120-130.



Figure 22 FMA: 9000813-001 PSU Top

CONFIDENTIAL, UNPUBLISHED PROPERTY OF ONE OR MORE OF THE FOLLOWING - EMS TECHNOLOGIES CANADA, LTD., FORMATION INC., SKY CONNECT LLC (COLLECTIVELY "EMS AVIATION").

USE AND DISTRIBUTION LIMITED SOLELY TO AUTHORIZED PERSONNEL

The use, disclosure, reproduction, modification, transfer or transmittal of this work for any purpose, in any form, or by any means without the prior written permission of EMS Aviation is strictly prohibited. This document does not contain technical data as defined in the International Traffic and Arms Regulations (ITAR) 22 CFR 120-130.

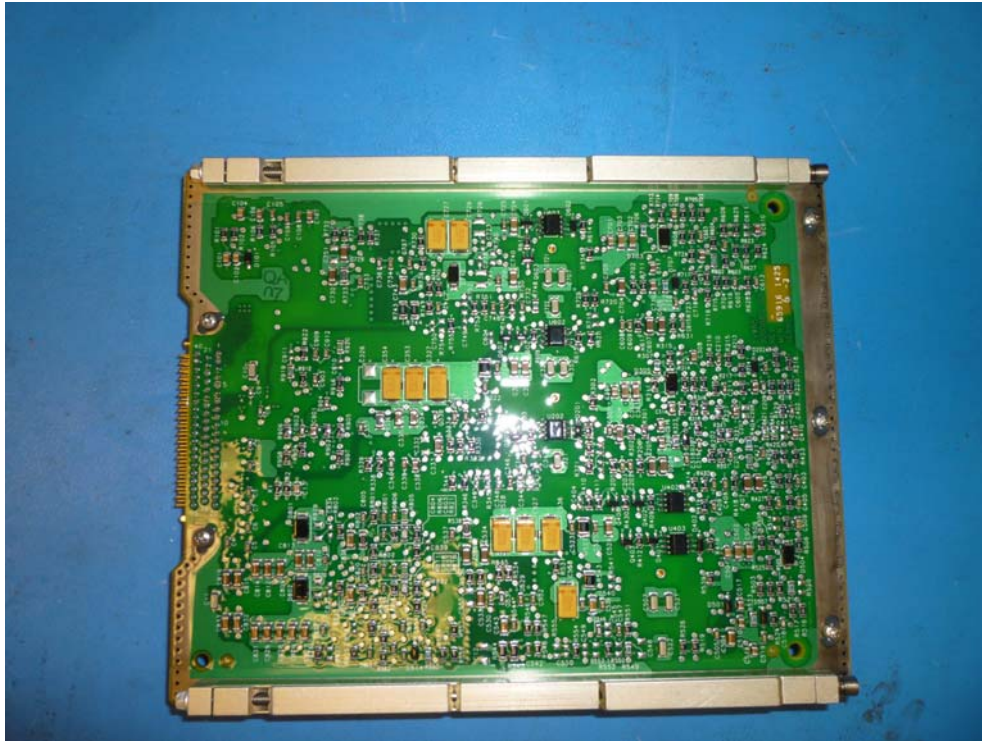


Figure 23 FMA: 9000813-001 PSU Bottom

CONFIDENTIAL, UNPUBLISHED PROPERTY OF ONE OR MORE OF THE FOLLOWING - EMS TECHNOLOGIES CANADA, LTD., FORMATION INC., SKY CONNECT LLC (COLLECTIVELY "EMS AVIATION").

USE AND DISTRIBUTION LIMITED SOLELY TO AUTHORIZED PERSONNEL

The use, disclosure, reproduction, modification, transfer or transmittal of this work for any purpose, in any form, or by any means without the prior written permission of EMS Aviation is strictly prohibited. This document does not contain technical data as defined in the International Traffic and Arms Regulations (ITAR) 22 CFR 120-130.

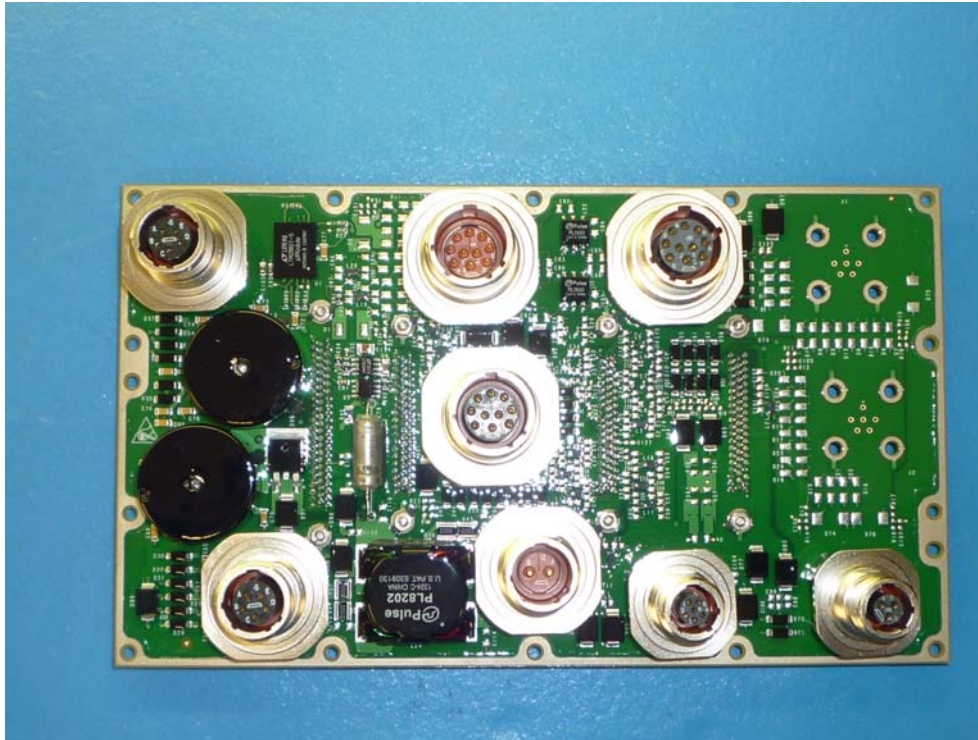


Figure 24 FMA: 90000835-001 Main Interconnect Board - Top

CONFIDENTIAL, UNPUBLISHED PROPERTY OF ONE OR MORE OF THE FOLLOWING - EMS TECHNOLOGIES CANADA, LTD., FORMATION INC., SKY CONNECT LLC (COLLECTIVELY "EMS AVIATION").

USE AND DISTRIBUTION LIMITED SOLELY TO AUTHORIZED PERSONNEL

The use, disclosure, reproduction, modification, transfer or transmittal of this work for any purpose, in any form, or by any means without the prior written permission of EMS Aviation is strictly prohibited. This document does not contain technical data as defined in the International Traffic and Arms Regulations (ITAR) 22 CFR 120-130.

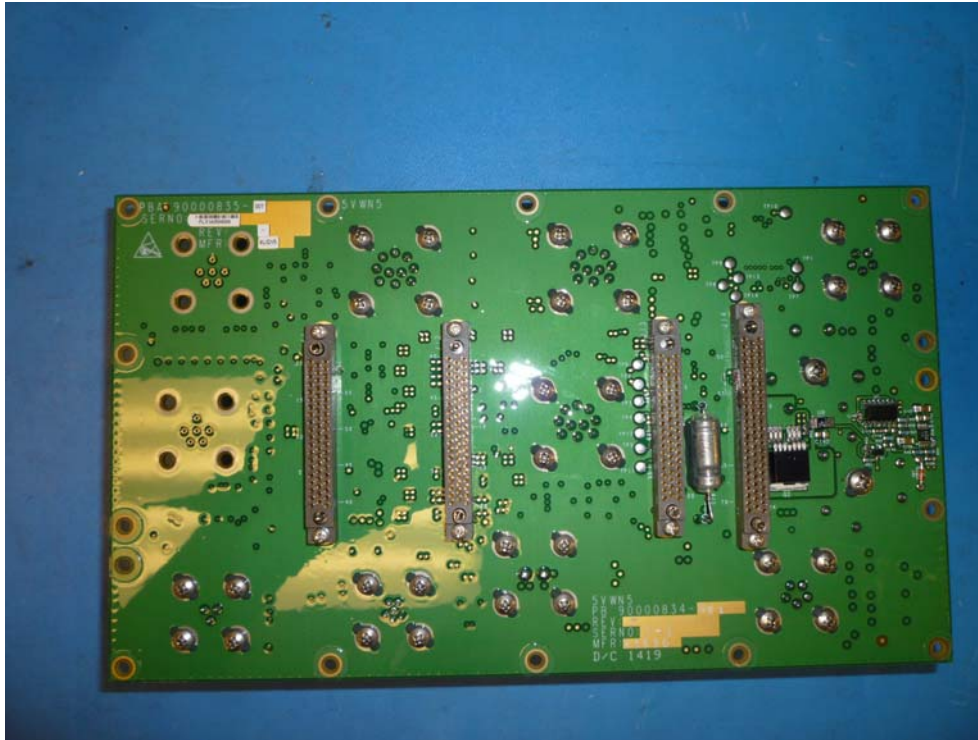


Figure 25 FMA: 9000835-001 Main Interconnect Board - Bottom

CONFIDENTIAL, UNPUBLISHED PROPERTY OF ONE OR MORE OF THE FOLLOWING - EMS TECHNOLOGIES CANADA, LTD., FORMATION INC., SKY CONNECT LLC (COLLECTIVELY "EMS AVIATION").

USE AND DISTRIBUTION LIMITED SOLELY TO AUTHORIZED PERSONNEL

The use, disclosure, reproduction, modification, transfer or transmittal of this work for any purpose, in any form, or by any means without the prior written permission of EMS Aviation is strictly prohibited. This document does not contain technical data as defined in the International Traffic and Arms Regulations (ITAR) 22 CFR 120-130.

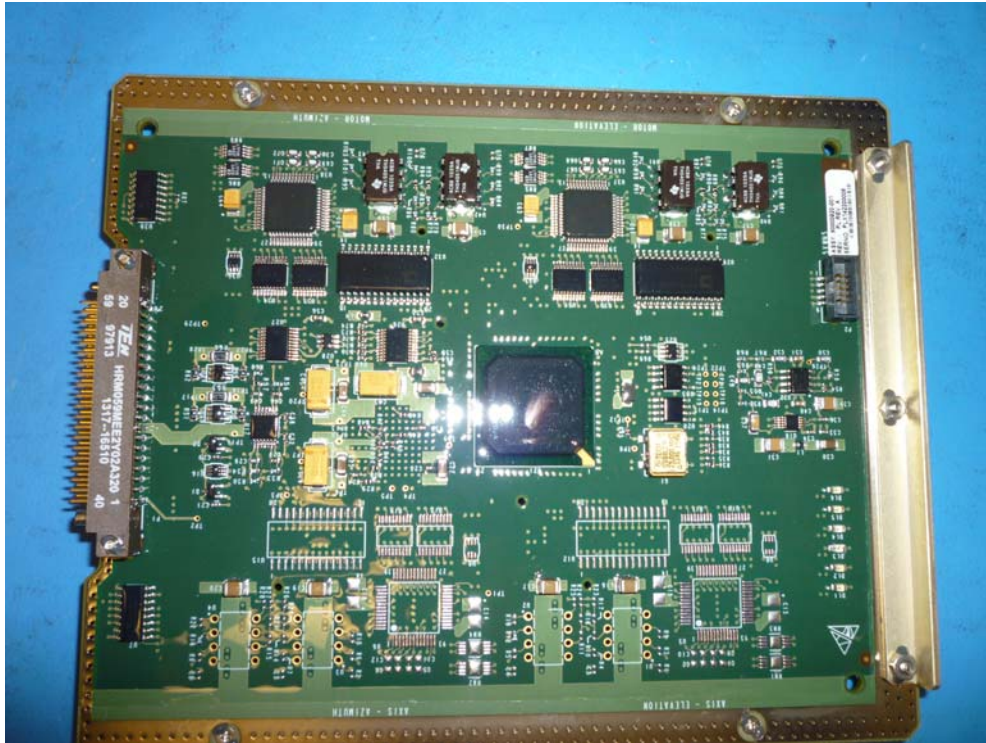


Figure 26 FMA: 90000920-001 R2D -Top

CONFIDENTIAL, UNPUBLISHED PROPERTY OF ONE OR MORE OF THE FOLLOWING - EMS TECHNOLOGIES CANADA, LTD., FORMATION INC., SKY CONNECT LLC (COLLECTIVELY "EMS AVIATION").

USE AND DISTRIBUTION LIMITED SOLELY TO AUTHORIZED PERSONNEL

The use, disclosure, reproduction, modification, transfer or transmittal of this work for any purpose, in any form, or by any means without the prior written permission of EMS Aviation is strictly prohibited. This document does not contain technical data as defined in the International Traffic and Arms Regulations (ITAR) 22 CFR 120-130.

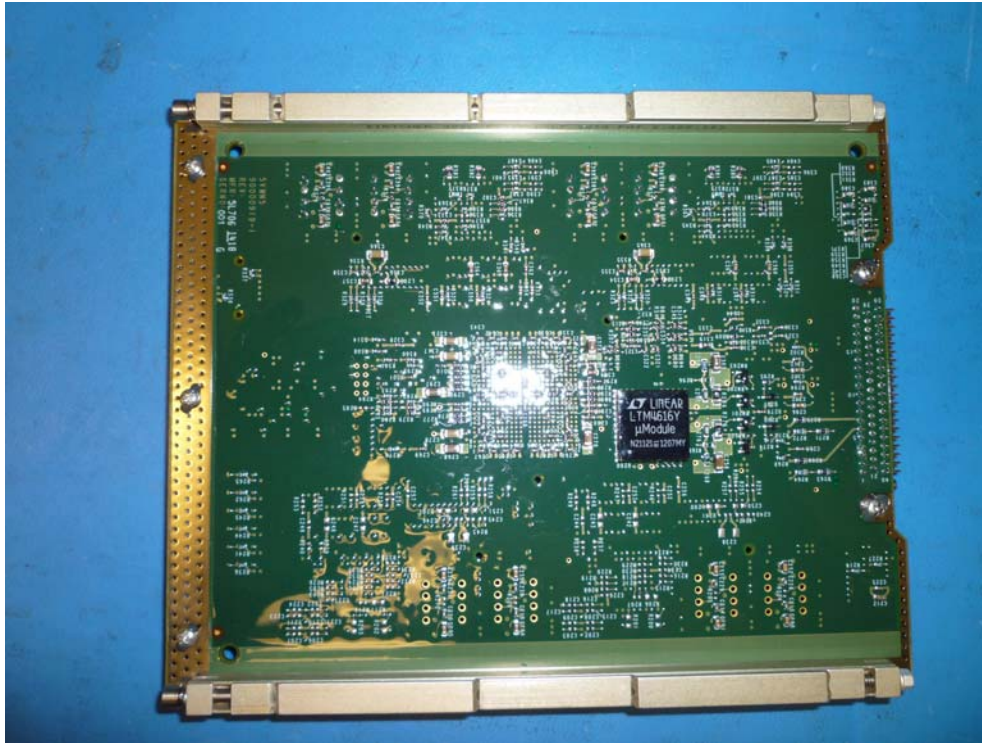


Figure 27 FMA: 90000920-001 R2D - Bottom

CONFIDENTIAL, UNPUBLISHED PROPERTY OF ONE OR MORE OF THE FOLLOWING - EMS TECHNOLOGIES CANADA, LTD., FORMATION INC., SKY CONNECT LLC (COLLECTIVELY "EMS AVIATION").

USE AND DISTRIBUTION LIMITED SOLELY TO AUTHORIZED PERSONNEL

The use, disclosure, reproduction, modification, transfer or transmittal of this work for any purpose, in any form, or by any means without the prior written permission of EMS Aviation is strictly prohibited. This document does not contain technical data as defined in the International Traffic and Arms Regulations (ITAR) 22 CFR 120-130.



Figure 28 FMA: 9000462 MDU -Top

CONFIDENTIAL, UNPUBLISHED PROPERTY OF ONE OR MORE OF THE FOLLOWING - EMS TECHNOLOGIES CANADA, LTD., FORMATION INC., SKY CONNECT LLC (COLLECTIVELY "EMS AVIATION").

USE AND DISTRIBUTION LIMITED SOLELY TO AUTHORIZED PERSONNEL

The use, disclosure, reproduction, modification, transfer or transmittal of this work for any purpose, in any form, or by any means without the prior written permission of EMS Aviation is strictly prohibited. This document does not contain technical data as defined in the International Traffic and Arms Regulations (ITAR) 22 CFR 120-130.

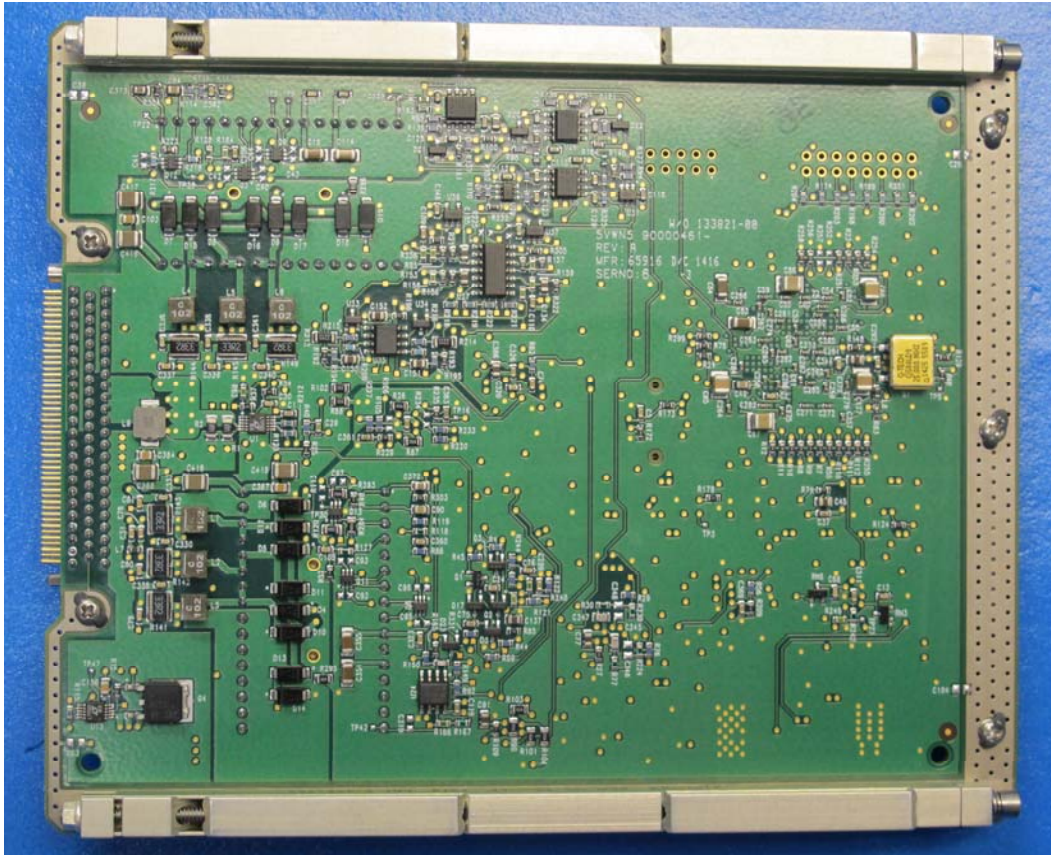


Figure 29 FMA: 90000462 MDU -Bottom

CONFIDENTIAL, UNPUBLISHED PROPERTY OF ONE OR MORE OF THE FOLLOWING - EMS TECHNOLOGIES CANADA, LTD., FORMATION INC., SKY CONNECT LLC (COLLECTIVELY "EMS AVIATION").

USE AND DISTRIBUTION LIMITED SOLELY TO AUTHORIZED PERSONNEL

The use, disclosure, reproduction, modification, transfer or transmittal of this work for any purpose, in any form, or by any means without the prior written permission of EMS Aviation is strictly prohibited. This document does not contain technical data as defined in the International Traffic and Arms Regulations (ITAR) 22 CFR 120-130.

Tail Mount Antenna



Figure 30 TMA: 90401281 TACM Top

CONFIDENTIAL, UNPUBLISHED PROPERTY OF ONE OR MORE OF THE FOLLOWING - EMS TECHNOLOGIES CANADA, LTD., FORMATION INC., SKY CONNECT LLC (COLLECTIVELY "EMS AVIATION").

USE AND DISTRIBUTION LIMITED SOLELY TO AUTHORIZED PERSONNEL

The use, disclosure, reproduction, modification, transfer or transmittal of this work for any purpose, in any form, or by any means without the prior written permission of EMS Aviation is strictly prohibited. This document does not contain technical data as defined in the International Traffic and Arms Regulations (ITAR) 22 CFR 120-130.

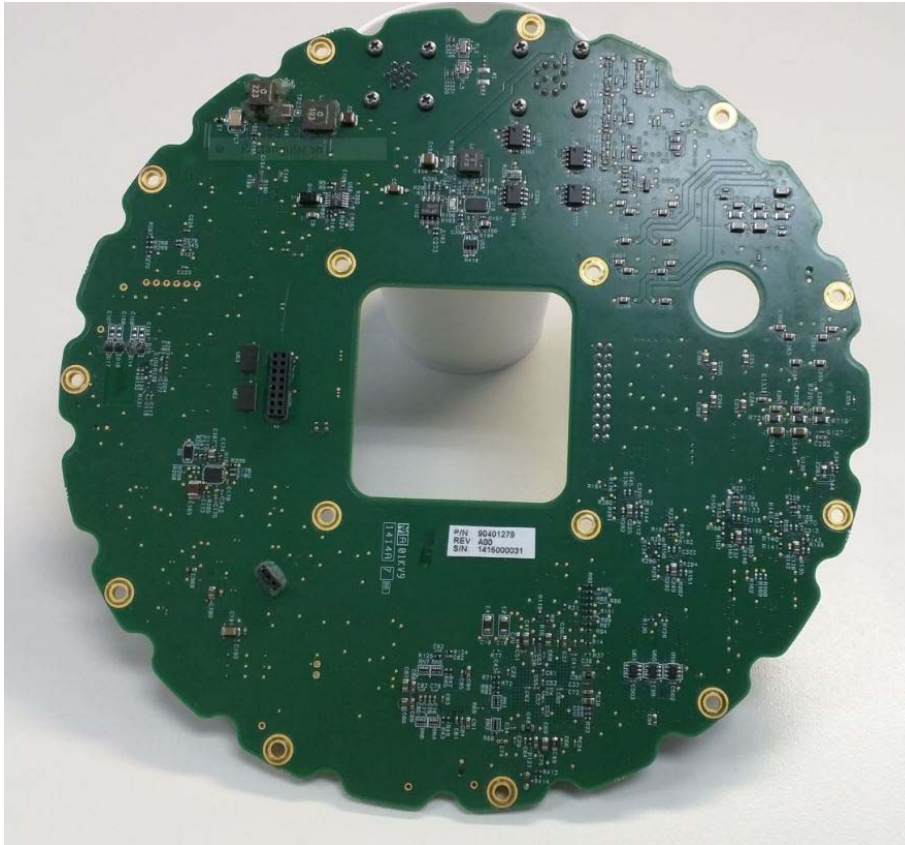


Figure 31 TMA: 90401281 TACM Bottom

CONFIDENTIAL, UNPUBLISHED PROPERTY OF ONE OR MORE OF THE FOLLOWING - EMS TECHNOLOGIES CANADA, LTD., FORMATION INC., SKY CONNECT LLC (COLLECTIVELY "EMS AVIATION").

USE AND DISTRIBUTION LIMITED SOLELY TO AUTHORIZED PERSONNEL

The use, disclosure, reproduction, modification, transfer or transmittal of this work for any purpose, in any form, or by any means without the prior written permission of EMS Aviation is strictly prohibited. This document does not contain technical data as defined in the International Traffic and Arms Regulations (ITAR) 22 CFR 120-130.
