

## LIST OF FIGURES

FIGURE 1: 1252-A-3050 CONTROL PROCESSOR TOP .....	2
FIGURE 2: 1252-A-3050 CONTROL PROCESSOR BOTTOM.....	3
FIGURE 3: 1210-A-0010-02 BGAN CHANNEL CARD TOP .....	4
FIGURE 4: 1210-A-0010-02 BGAN CHANNEL CARD INSIDE .....	5
FIGURE 5: 1210-A-0010-02 BGAN CHANNEL CARD BOTTOM.....	6
FIGURE 6: 1210-A-0003 RF MODULES BOTTOM .....	7
FIGURE 7: 1110-F-0017 OXCO TOP.....	8
FIGURE 8: 1110-F-0017 OXCO BOTTOM .....	9
FIGURE 9: 1110-F-0017 OXCO INSTALLED .....	10
FIGURE 10: 1252-F-3302 POWER SUPPLY TOP .....	11
FIGURE 11: 1252-F-3302 POWER SUPPLY BOTTOM.....	12
FIGURE 12: 1252-A-2007 RF COMBINER/SPLITTER TOP.....	13
FIGURE 13: 1252-A-2007_1252-U-2008 TX COMBINER CCA (PART OF RF COMBINER/SPLITTER) .....	14
FIGURE 14: 1252-A-2007 RF COMBINER/SPLITTER BOTTOM .....	15
FIGURE 15: 1110-A-0130 RF CONTROL MODULE TOP .....	16
FIGURE 16: 1110-A-0130_1110-A-0131 CCA RF CARD (PART OF THE RF CONTROL MODULE) .....	17
FIGURE 17: 1110-A-0130_1110-A-0132 CONTROL CARD CCA TOP (PART OF THE RF CONTROL MODULE) .....	18
FIGURE 18: 1110-A-0130_1110-A-0132 CONTROL CARD CCA BOTTOM (PART OF THE RF CONTROL MODULE) .....	19
FIGURE 19: 1110-A-0130 RF CONTROL MODULE BOTTOM.....	20
FIGURE 20: INTERCONNECTIONS FRONT VIEW.....	21
FIGURE 21: INTERCONNECTIONS TOP VIEW .....	22

**CONFIDENTIAL, UNPUBLISHED PROPERTY OF ONE OR MORE OF THE FOLLOWING - EMS TECHNOLOGIES CANADA, LTD., FORMATION INC., SKY CONNECT LLC (COLLECTIVELY “EMS AVIATION”).**

### **USE AND DISTRIBUTION LIMITED SOLELY TO AUTHORIZED PERSONNEL**

The use, disclosure, reproduction, modification, transfer or transmittal of this work for any purpose, in any form, or by any means without the prior written permission of EMS Aviation is strictly prohibited. This document does not contain technical data as defined in the International Traffic and Arms Regulations (ITAR) 22 CFR 120-130.

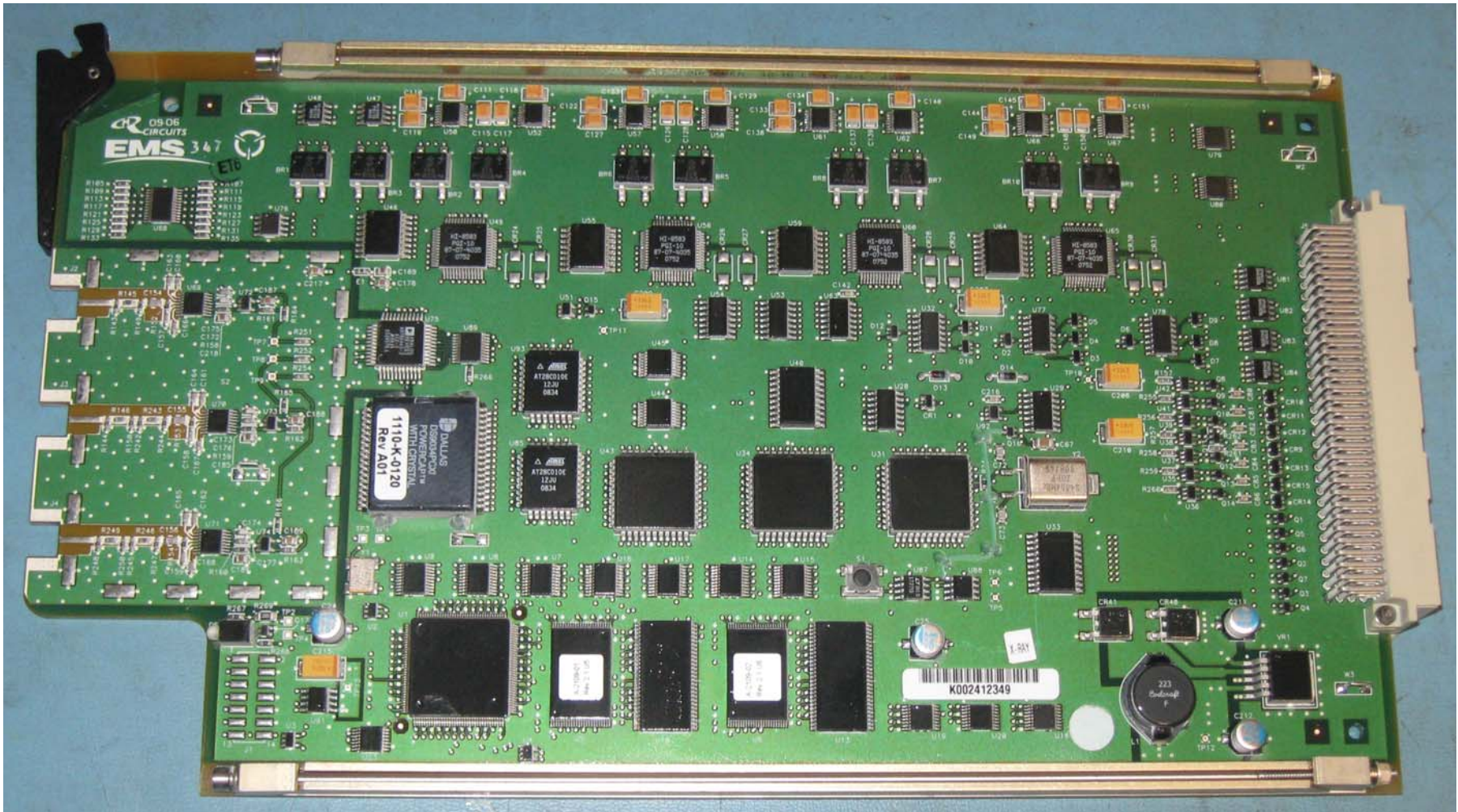


Figure 1: 1252-A-3050 Control Processor Top

**CONFIDENTIAL, UNPUBLISHED PROPERTY OF ONE OR MORE OF THE FOLLOWING - EMS TECHNOLOGIES CANADA, LTD., FORMATION INC., SKY CONNECT LLC (COLLECTIVELY "EMS AVIATION").**

**USE AND DISTRIBUTION LIMITED SOLELY TO AUTHORIZED PERSONNEL**

The use, disclosure, reproduction, modification, transfer or transmittal of this work for any purpose, in any form, or by any means without the prior written permission of EMS Aviation is strictly prohibited. This document does not contain technical data as defined in the International Traffic and Arms Regulations (ITAR) 22 CFR 120-130.

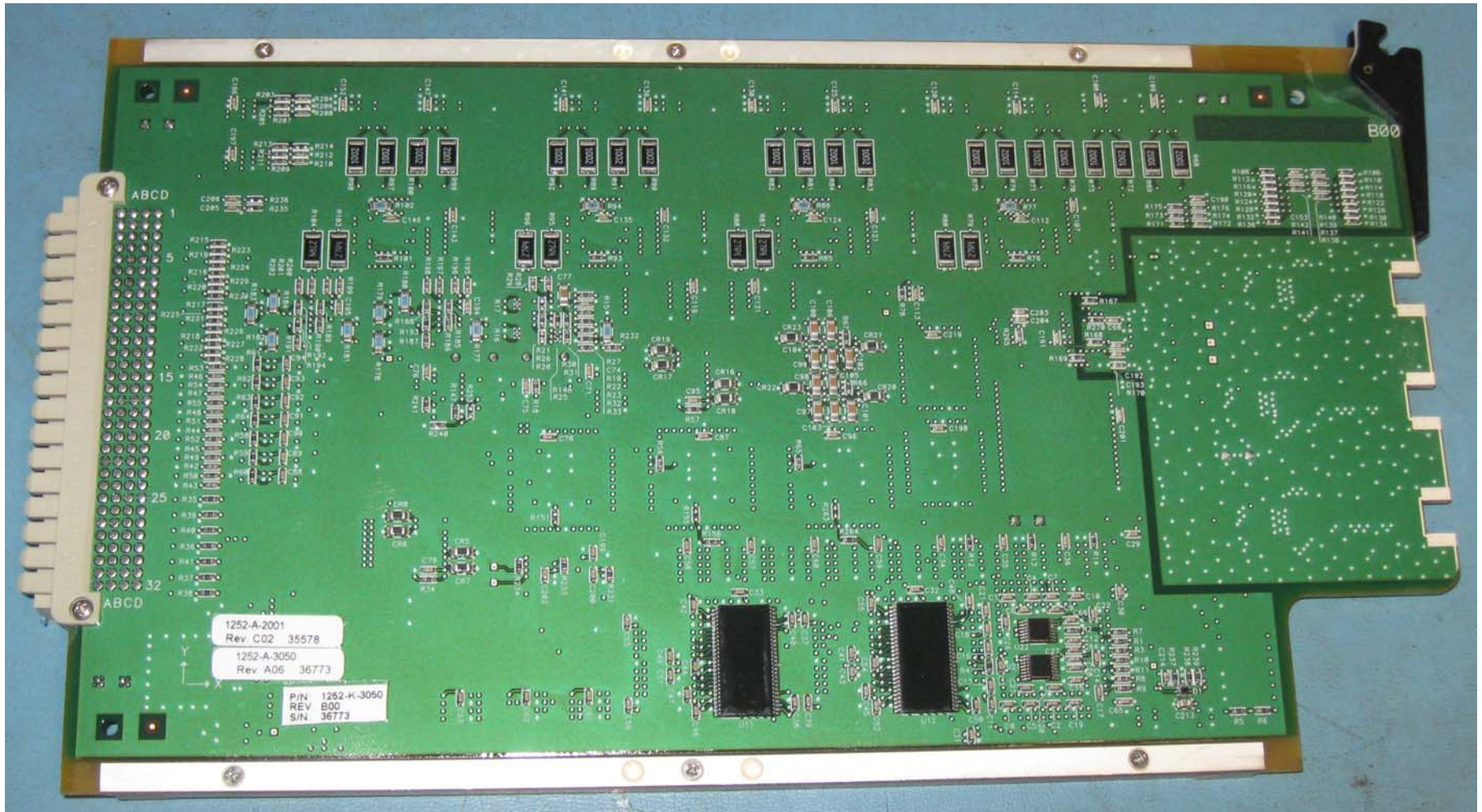


Figure 2: 1252-A-3050 Control Processor Bottom

**CONFIDENTIAL, UNPUBLISHED PROPERTY OF ONE OR MORE OF THE FOLLOWING - EMS TECHNOLOGIES CANADA, LTD., FORMATION INC., SKY CONNECT LLC (COLLECTIVELY "EMS AVIATION").**

**USE AND DISTRIBUTION LIMITED SOLELY TO AUTHORIZED PERSONNEL**

The use, disclosure, reproduction, modification, transfer or transmittal of this work for any purpose, in any form, or by any means without the prior written permission of EMS Aviation is strictly prohibited. This document does not contain technical data as defined in the International Traffic and Arms Regulations (ITAR) 22 CFR 120-130.

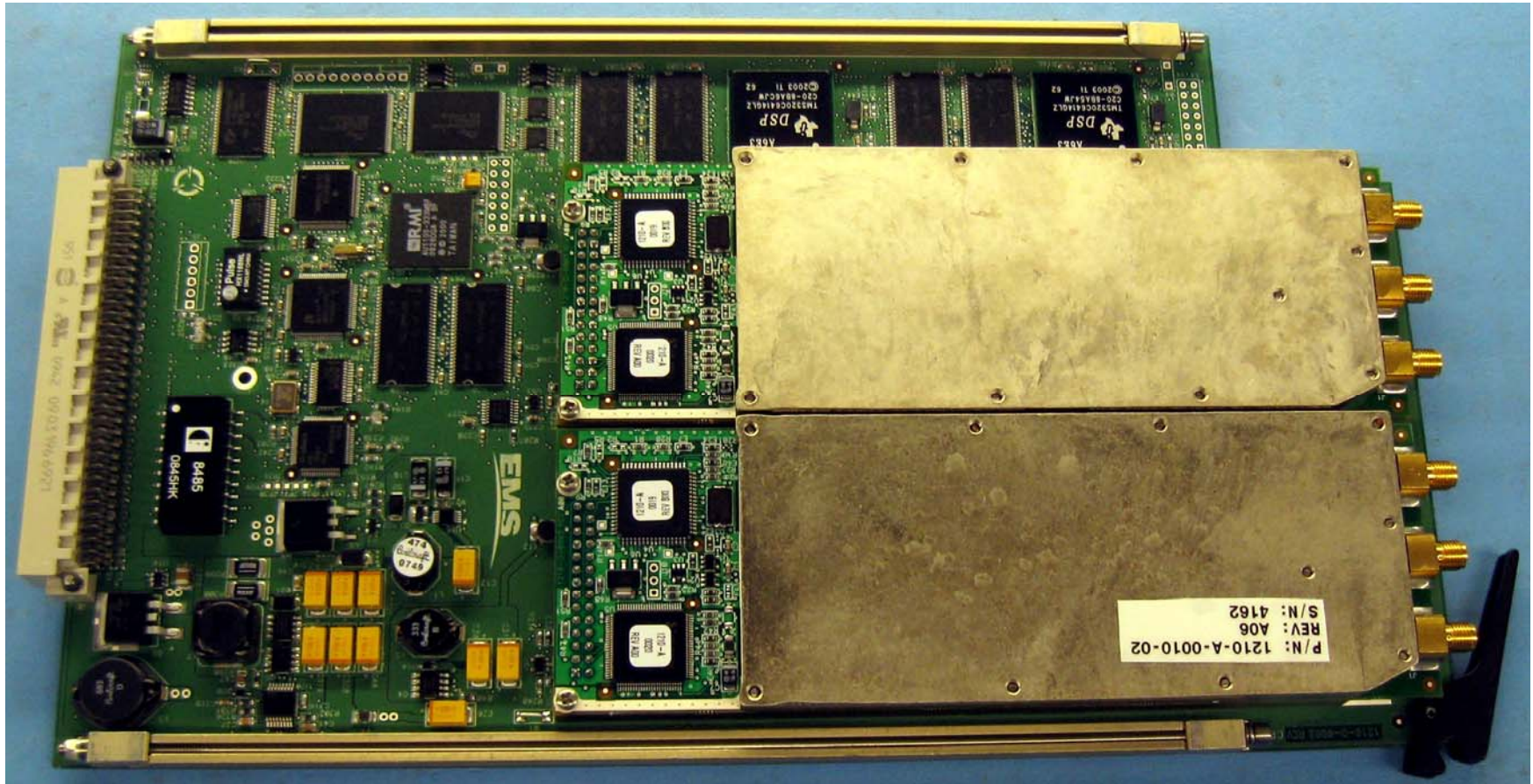


Figure 3: 1210-A-0010-02 BGAN Channel Card Top

**CONFIDENTIAL, UNPUBLISHED PROPERTY OF ONE OR MORE OF THE FOLLOWING - EMS TECHNOLOGIES CANADA, LTD., FORMATION INC., SKY CONNECT LLC (COLLECTIVELY "EMS AVIATION").**

**USE AND DISTRIBUTION LIMITED SOLELY TO AUTHORIZED PERSONNEL**

The use, disclosure, reproduction, modification, transfer or transmittal of this work for any purpose, in any form, or by any means without the prior written permission of EMS Aviation is strictly prohibited. This document does not contain technical data as defined in the International Traffic and Arms Regulations (ITAR) 22 CFR 120-130.

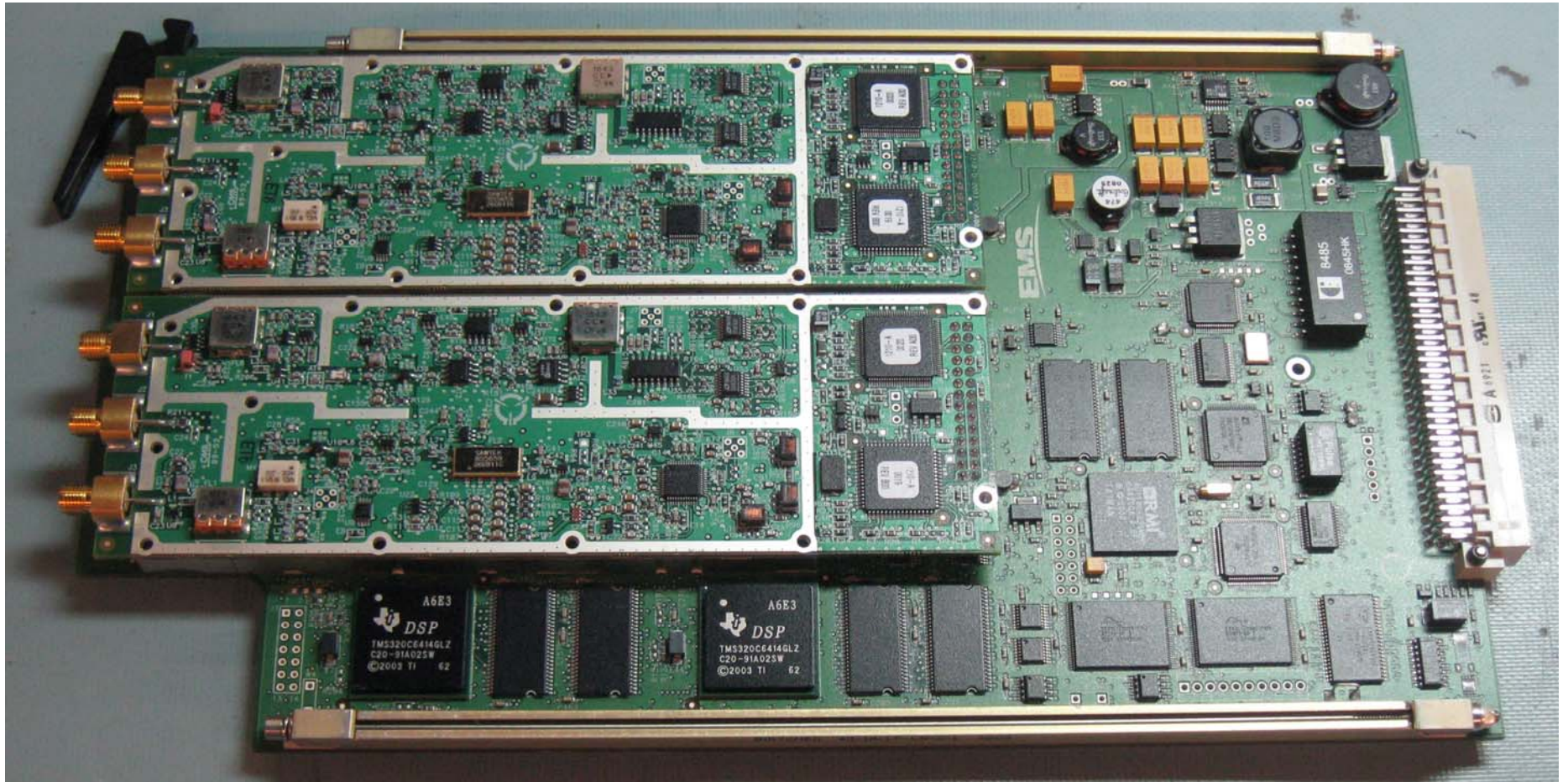
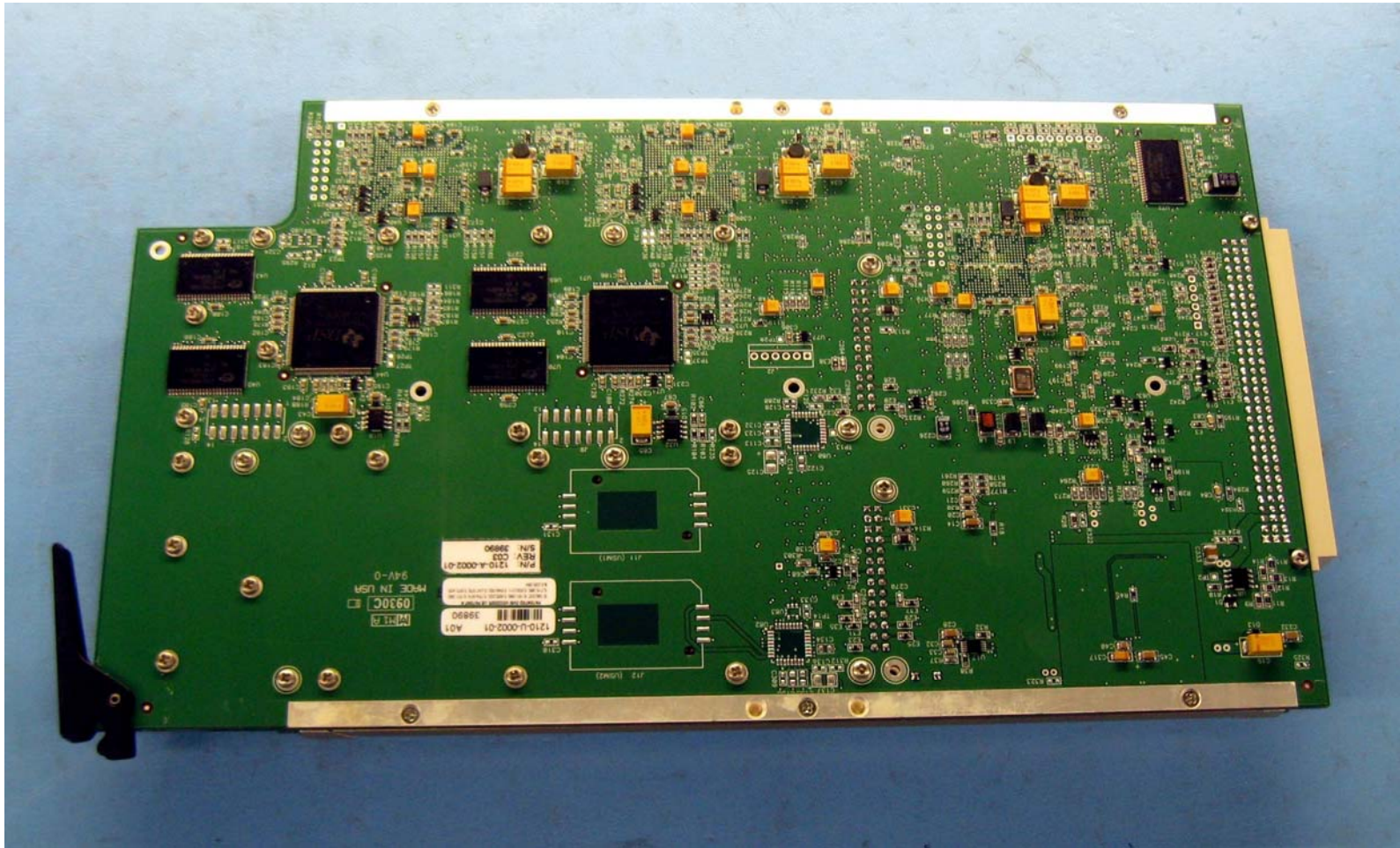


Figure 4: 1210-A-0010-02 BGAN Channel Card Inside

**CONFIDENTIAL, UNPUBLISHED PROPERTY OF ONE OR MORE OF THE FOLLOWING - EMS TECHNOLOGIES CANADA, LTD., FORMATION INC., SKY CONNECT LLC (COLLECTIVELY "EMS AVIATION").**

**USE AND DISTRIBUTION LIMITED SOLELY TO AUTHORIZED PERSONNEL**

The use, disclosure, reproduction, modification, transfer or transmittal of this work for any purpose, in any form, or by any means without the prior written permission of EMS Aviation is strictly prohibited. This document does not contain technical data as defined in the International Traffic and Arms Regulations (ITAR) 22 CFR 120-130.

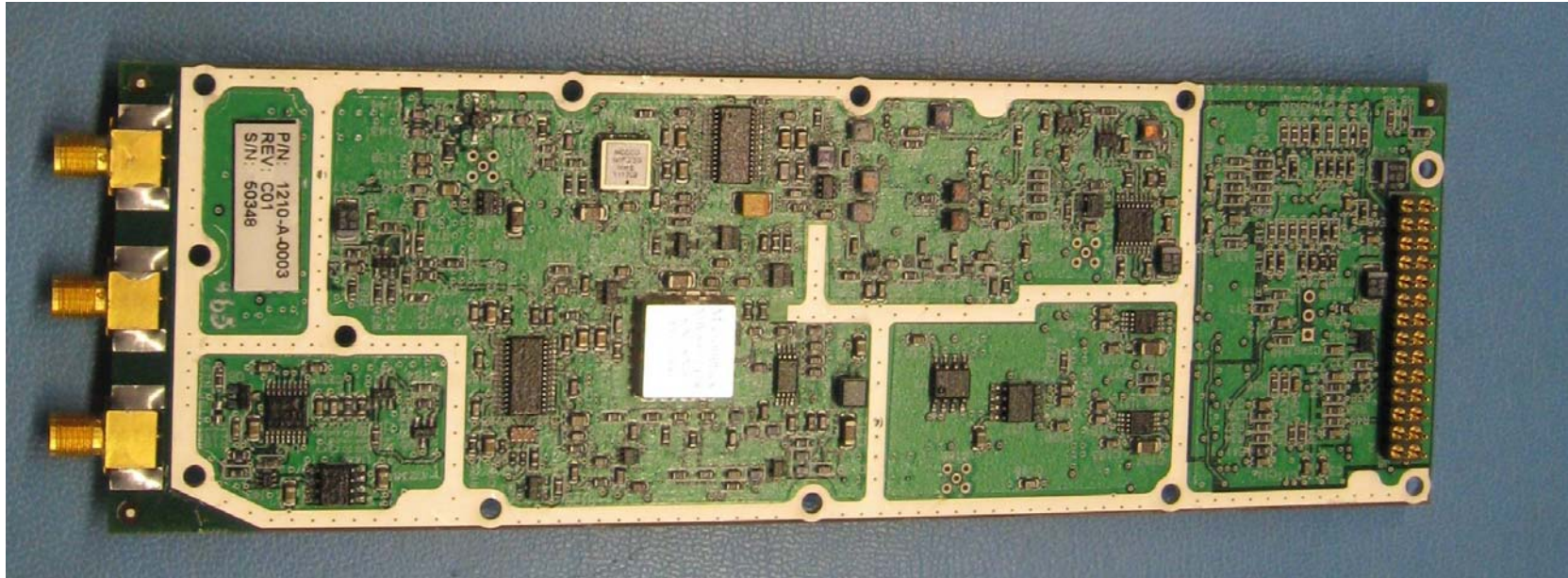


**Figure 5: 1210-A-0010-02 BGAN Channel Card Bottom**

**CONFIDENTIAL, UNPUBLISHED PROPERTY OF ONE OR MORE OF THE FOLLOWING - EMS TECHNOLOGIES CANADA, LTD., FORMATION INC., SKY CONNECT LLC (COLLECTIVELY "EMS AVIATION").**

**USE AND DISTRIBUTION LIMITED SOLELY TO AUTHORIZED PERSONNEL**

The use, disclosure, reproduction, modification, transfer or transmittal of this work for any purpose, in any form, or by any means without the prior written permission of EMS Aviation is strictly prohibited. This document does not contain technical data as defined in the International Traffic and Arms Regulations (ITAR) 22 CFR 120-130.



**Figure 6: 1210-A-0003 RF Modules Bottom**

**CONFIDENTIAL, UNPUBLISHED PROPERTY OF ONE OR MORE OF THE FOLLOWING - EMS TECHNOLOGIES CANADA, LTD., FORMATION INC., SKY CONNECT LLC (COLLECTIVELY “EMS AVIATION”).**

**USE AND DISTRIBUTION LIMITED SOLELY TO AUTHORIZED PERSONNEL**

The use, disclosure, reproduction, modification, transfer or transmittal of this work for any purpose, in any form, or by any means without the prior written permission of EMS Aviation is strictly prohibited. This document does not contain technical data as defined in the International Traffic and Arms Regulations (ITAR) 22 CFR 120-130.

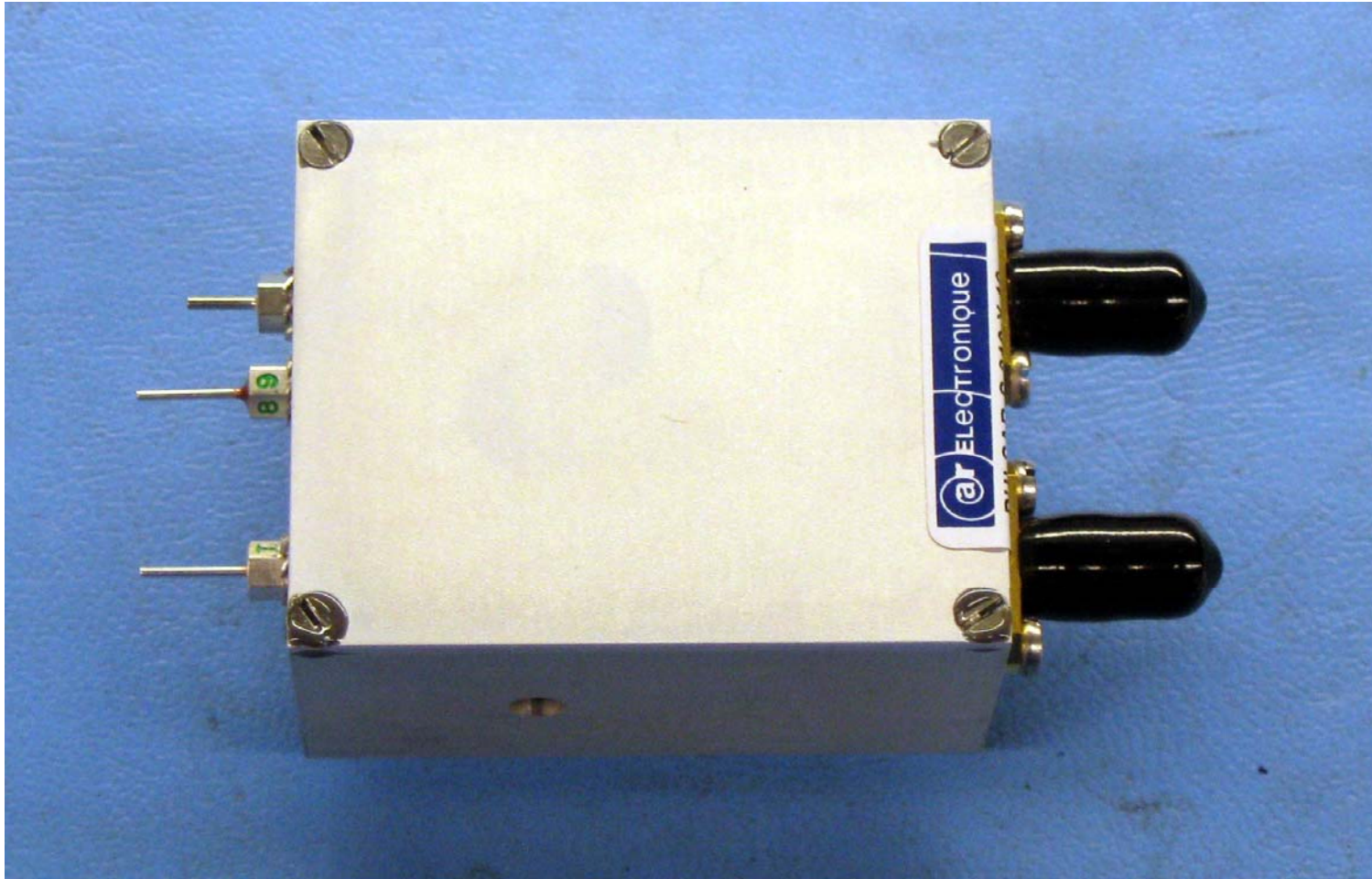


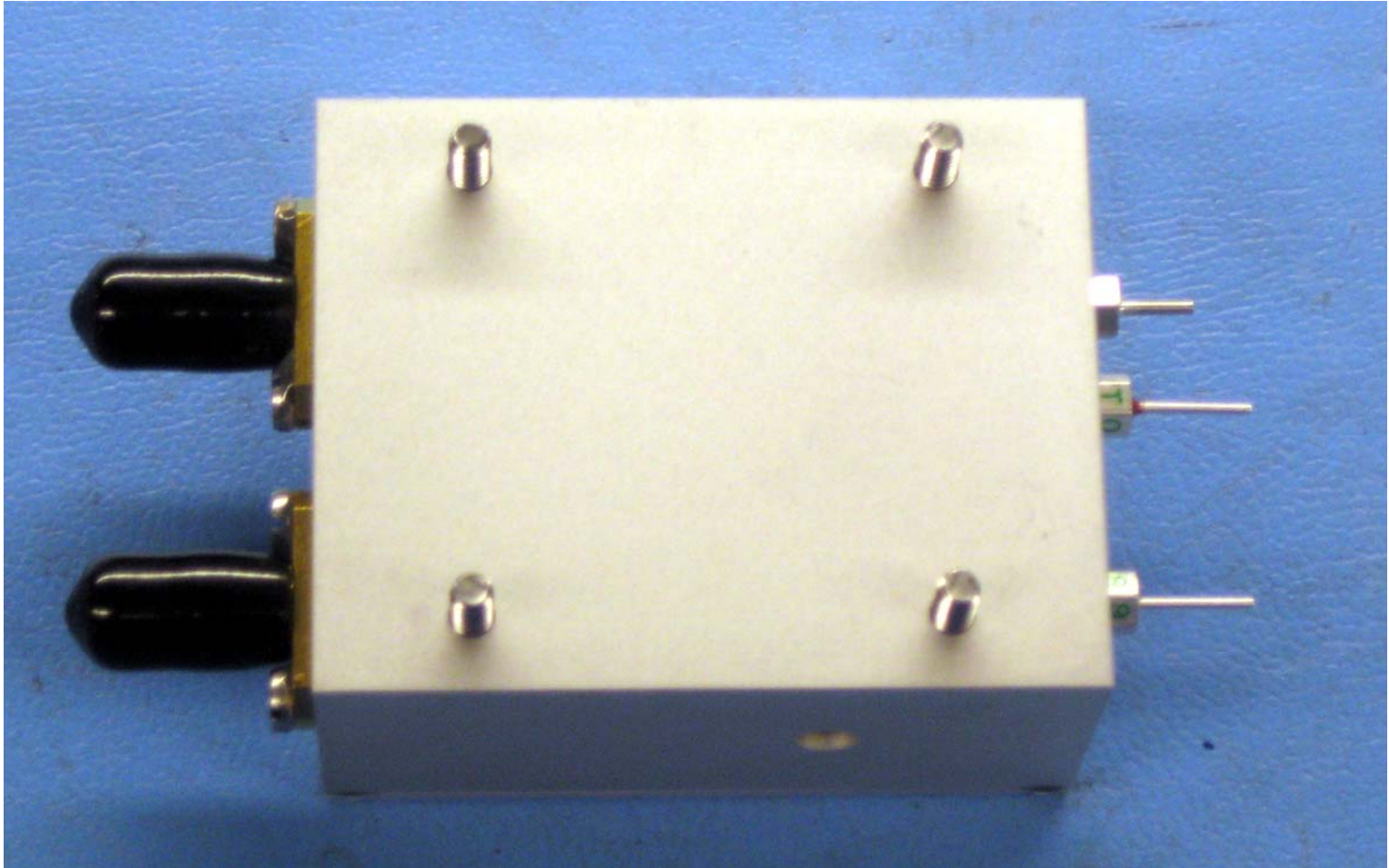
Figure 7: 1110-F-0017 OXCO Top

**CONFIDENTIAL, UNPUBLISHED PROPERTY OF ONE OR MORE OF THE FOLLOWING - EMS TECHNOLOGIES CANADA, LTD., FORMATION INC., SKY CONNECT LLC (COLLECTIVELY "EMS AVIATION").**

**USE AND DISTRIBUTION LIMITED SOLELY TO AUTHORIZED PERSONNEL**

The use, disclosure, reproduction, modification, transfer or transmittal of this work for any purpose, in any form, or by any means without the prior written permission of EMS Aviation is strictly prohibited. This document does not contain technical data as defined in the International Traffic and Arms Regulations (ITAR) 22 CFR 120-130.



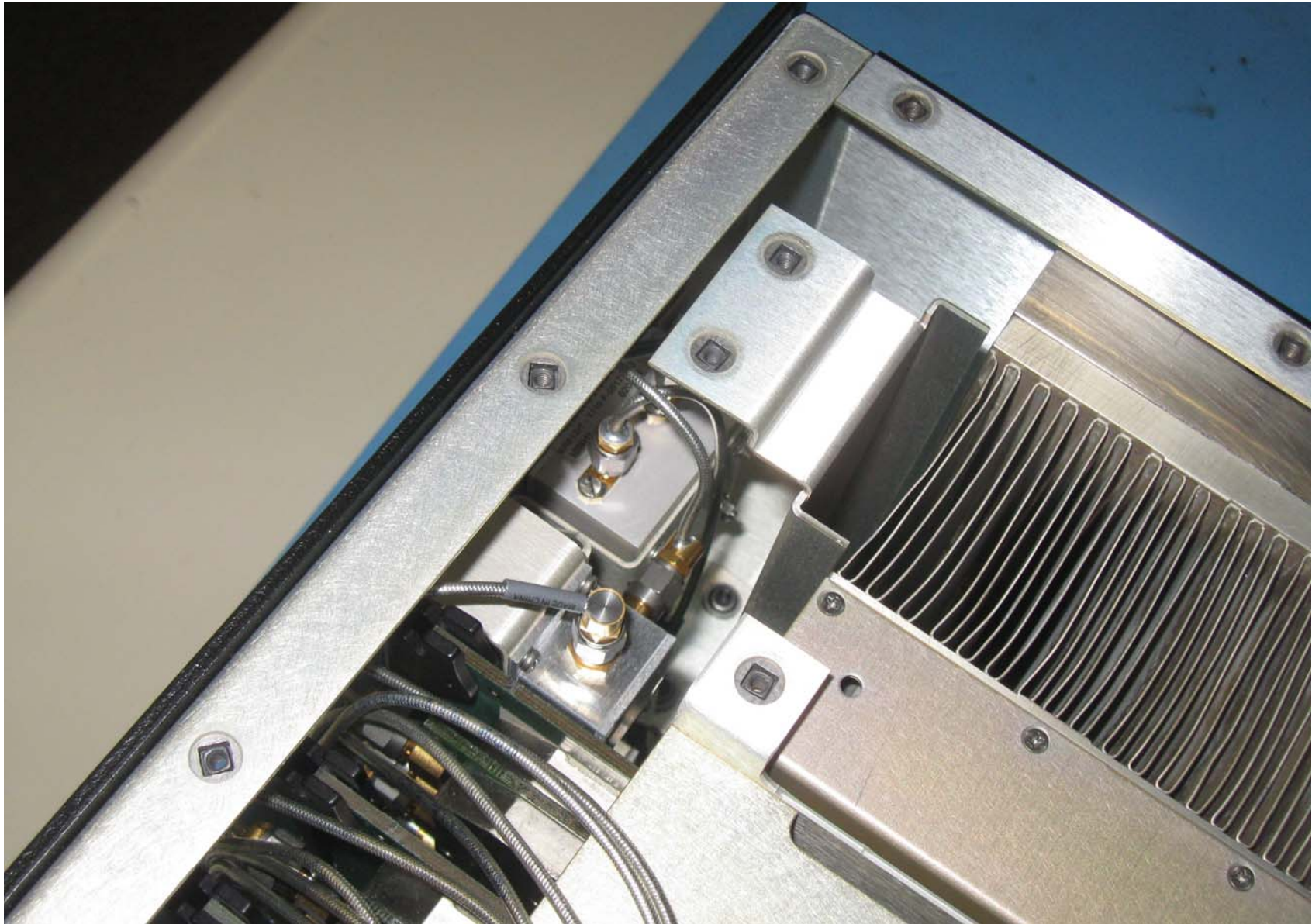


**Figure 8: 1110-F-0017 OXCO Bottom**

**CONFIDENTIAL, UNPUBLISHED PROPERTY OF ONE OR MORE OF THE FOLLOWING - EMS TECHNOLOGIES CANADA, LTD., FORMATION INC., SKY CONNECT LLC (COLLECTIVELY "EMS AVIATION").**

**USE AND DISTRIBUTION LIMITED SOLELY TO AUTHORIZED PERSONNEL**

The use, disclosure, reproduction, modification, transfer or transmittal of this work for any purpose, in any form, or by any means without the prior written permission of EMS Aviation is strictly prohibited. This document does not contain technical data as defined in the International Traffic and Arms Regulations (ITAR) 22 CFR 120-130.



**Figure 9: 1110-F-0017 OXCO Installed**

**CONFIDENTIAL, UNPUBLISHED PROPERTY OF ONE OR MORE OF THE FOLLOWING - EMS TECHNOLOGIES CANADA, LTD., FORMATION INC., SKY CONNECT LLC (COLLECTIVELY "EMS AVIATION").**

**USE AND DISTRIBUTION LIMITED SOLELY TO AUTHORIZED PERSONNEL**

The use, disclosure, reproduction, modification, transfer or transmittal of this work for any purpose, in any form, or by any means without the prior written permission of EMS Aviation is strictly prohibited. This document does not contain technical data as defined in the International Traffic and Arms Regulations (ITAR) 22 CFR 120-130.



**Figure 10: 1252-F-3302 Power Supply Top**

**CONFIDENTIAL, UNPUBLISHED PROPERTY OF ONE OR MORE OF THE FOLLOWING - EMS TECHNOLOGIES CANADA, LTD., FORMATION INC., SKY CONNECT LLC (COLLECTIVELY "EMS AVIATION").**

**USE AND DISTRIBUTION LIMITED SOLELY TO AUTHORIZED PERSONNEL**

The use, disclosure, reproduction, modification, transfer or transmittal of this work for any purpose, in any form, or by any means without the prior written permission of EMS Aviation is strictly prohibited. This document does not contain technical data as defined in the International Traffic and Arms Regulations (ITAR) 22 CFR 120-130.



**Figure 11: 1252-F-3302 Power Supply Bottom**

**CONFIDENTIAL, UNPUBLISHED PROPERTY OF ONE OR MORE OF THE FOLLOWING - EMS TECHNOLOGIES CANADA, LTD., FORMATION INC., SKY CONNECT LLC (COLLECTIVELY "EMS AVIATION").**

**USE AND DISTRIBUTION LIMITED SOLELY TO AUTHORIZED PERSONNEL**

The use, disclosure, reproduction, modification, transfer or transmittal of this work for any purpose, in any form, or by any means without the prior written permission of EMS Aviation is strictly prohibited. This document does not contain technical data as defined in the International Traffic and Arms Regulations (ITAR) 22 CFR 120-130.



Figure 12: 1252-A-2007 RF Combiner/Splitter Top

**CONFIDENTIAL, UNPUBLISHED PROPERTY OF ONE OR MORE OF THE FOLLOWING - EMS TECHNOLOGIES CANADA, LTD., FORMATION INC., SKY CONNECT LLC (COLLECTIVELY "EMS AVIATION").**

**USE AND DISTRIBUTION LIMITED SOLELY TO AUTHORIZED PERSONNEL**

The use, disclosure, reproduction, modification, transfer or transmittal of this work for any purpose, in any form, or by any means without the prior written permission of EMS Aviation is strictly prohibited. This document does not contain technical data as defined in the International Traffic and Arms Regulations (ITAR) 22 CFR 120-130.

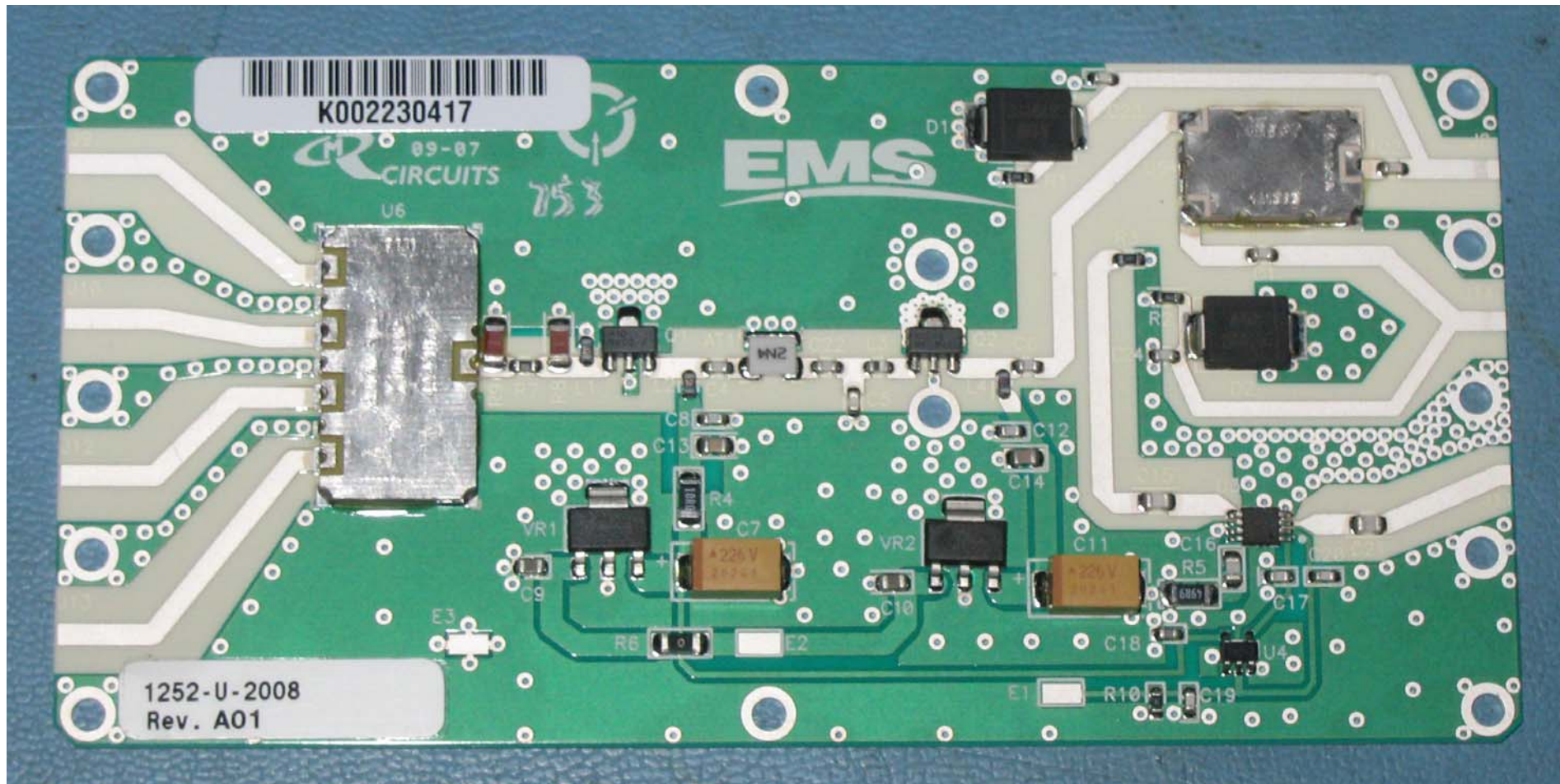
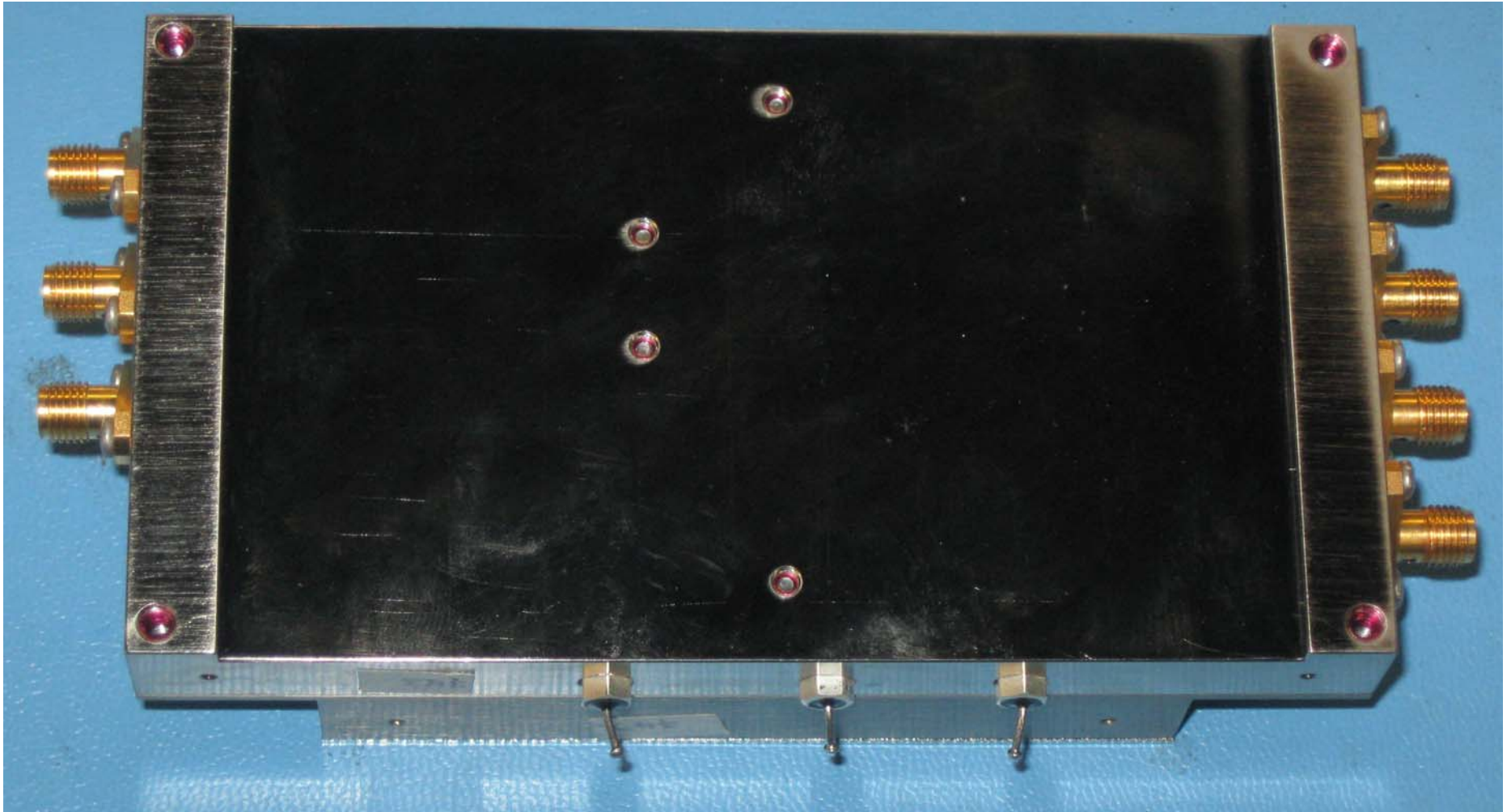


Figure 13: 1252-A-2007\_1252-U-2008 TX Combiner CCA (Part of RF Combiner/Splitter)

**CONFIDENTIAL, UNPUBLISHED PROPERTY OF ONE OR MORE OF THE FOLLOWING - EMS TECHNOLOGIES CANADA, LTD., FORMATION INC., SKY CONNECT LLC (COLLECTIVELY "EMS AVIATION").**

**USE AND DISTRIBUTION LIMITED SOLELY TO AUTHORIZED PERSONNEL**

The use, disclosure, reproduction, modification, transfer or transmittal of this work for any purpose, in any form, or by any means without the prior written permission of EMS Aviation is strictly prohibited. This document does not contain technical data as defined in the International Traffic and Arms Regulations (ITAR) 22 CFR 120-130.



**Figure 14: 1252-A-2007 RF Combiner/Splitter Bottom**

**CONFIDENTIAL, UNPUBLISHED PROPERTY OF ONE OR MORE OF THE FOLLOWING - EMS TECHNOLOGIES CANADA, LTD., FORMATION INC., SKY CONNECT LLC (COLLECTIVELY "EMS AVIATION").**

**USE AND DISTRIBUTION LIMITED SOLELY TO AUTHORIZED PERSONNEL**

The use, disclosure, reproduction, modification, transfer or transmittal of this work for any purpose, in any form, or by any means without the prior written permission of EMS Aviation is strictly prohibited. This document does not contain technical data as defined in the International Traffic and Arms Regulations (ITAR) 22 CFR 120-130.



**Figure 15: 1110-A-0130 RF Control Module Top**

**CONFIDENTIAL, UNPUBLISHED PROPERTY OF ONE OR MORE OF THE FOLLOWING - EMS TECHNOLOGIES CANADA, LTD., FORMATION INC., SKY CONNECT LLC (COLLECTIVELY "EMS AVIATION").**

**USE AND DISTRIBUTION LIMITED SOLELY TO AUTHORIZED PERSONNEL**

The use, disclosure, reproduction, modification, transfer or transmittal of this work for any purpose, in any form, or by any means without the prior written permission of EMS Aviation is strictly prohibited. This document does not contain technical data as defined in the International Traffic and Arms Regulations (ITAR) 22 CFR 120-130.



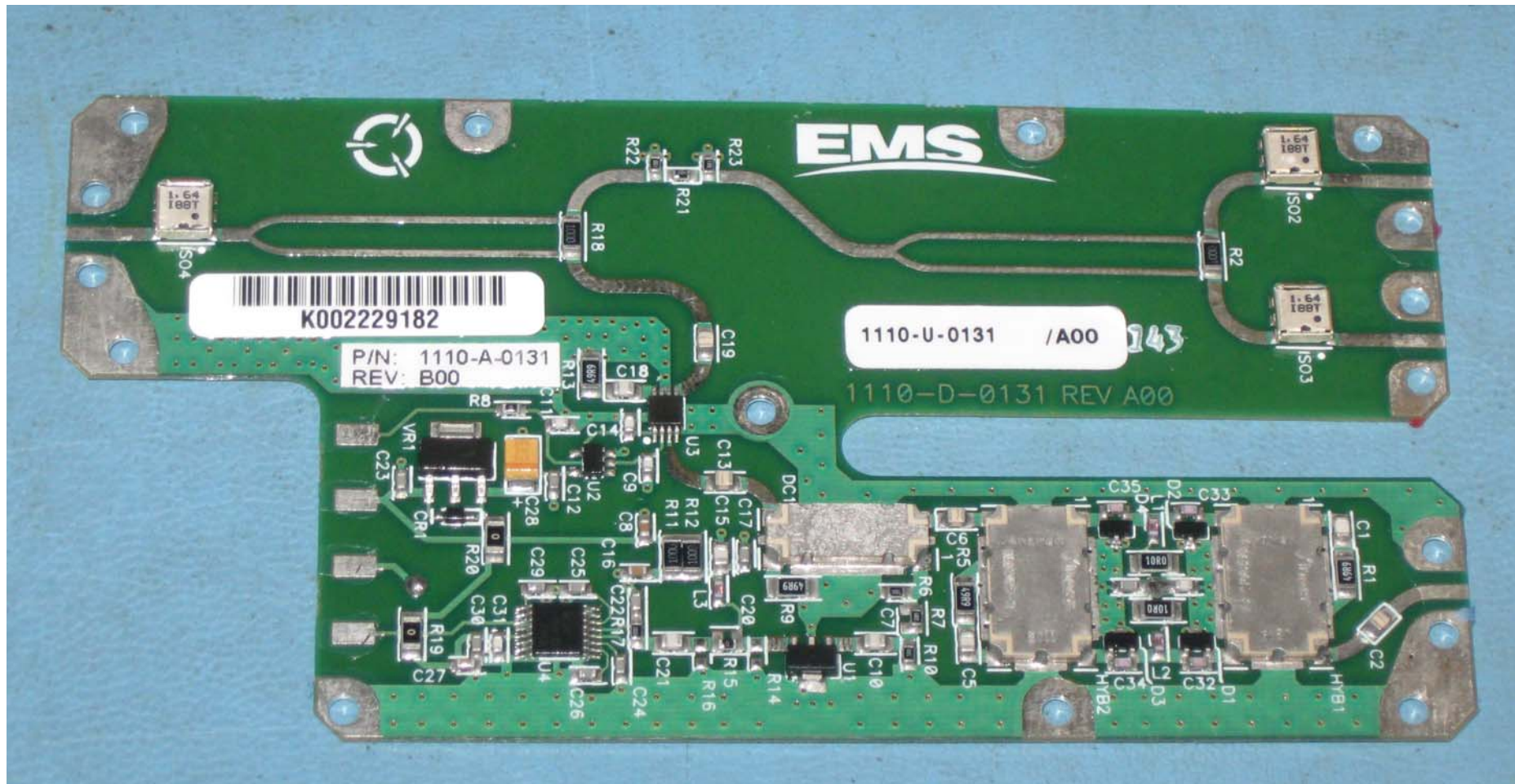


Figure 16: 1110-A-0130 \_1110-A-0131 CCA RF Card (Part of the RF Control Module)

CONFIDENTIAL, UNPUBLISHED PROPERTY OF ONE OR MORE OF THE FOLLOWING - EMS TECHNOLOGIES CANADA, LTD., FORMATION INC., SKY CONNECT LLC (COLLECTIVELY "EMS AVIATION").

**USE AND DISTRIBUTION LIMITED SOLELY TO AUTHORIZED PERSONNEL**

The use, disclosure, reproduction, modification, transfer or transmittal of this work for any purpose, in any form, or by any means without the prior written permission of EMS Aviation is strictly prohibited. This document does not contain technical data as defined in the International Traffic and Arms Regulations (ITAR) 22 CFR 120-130.

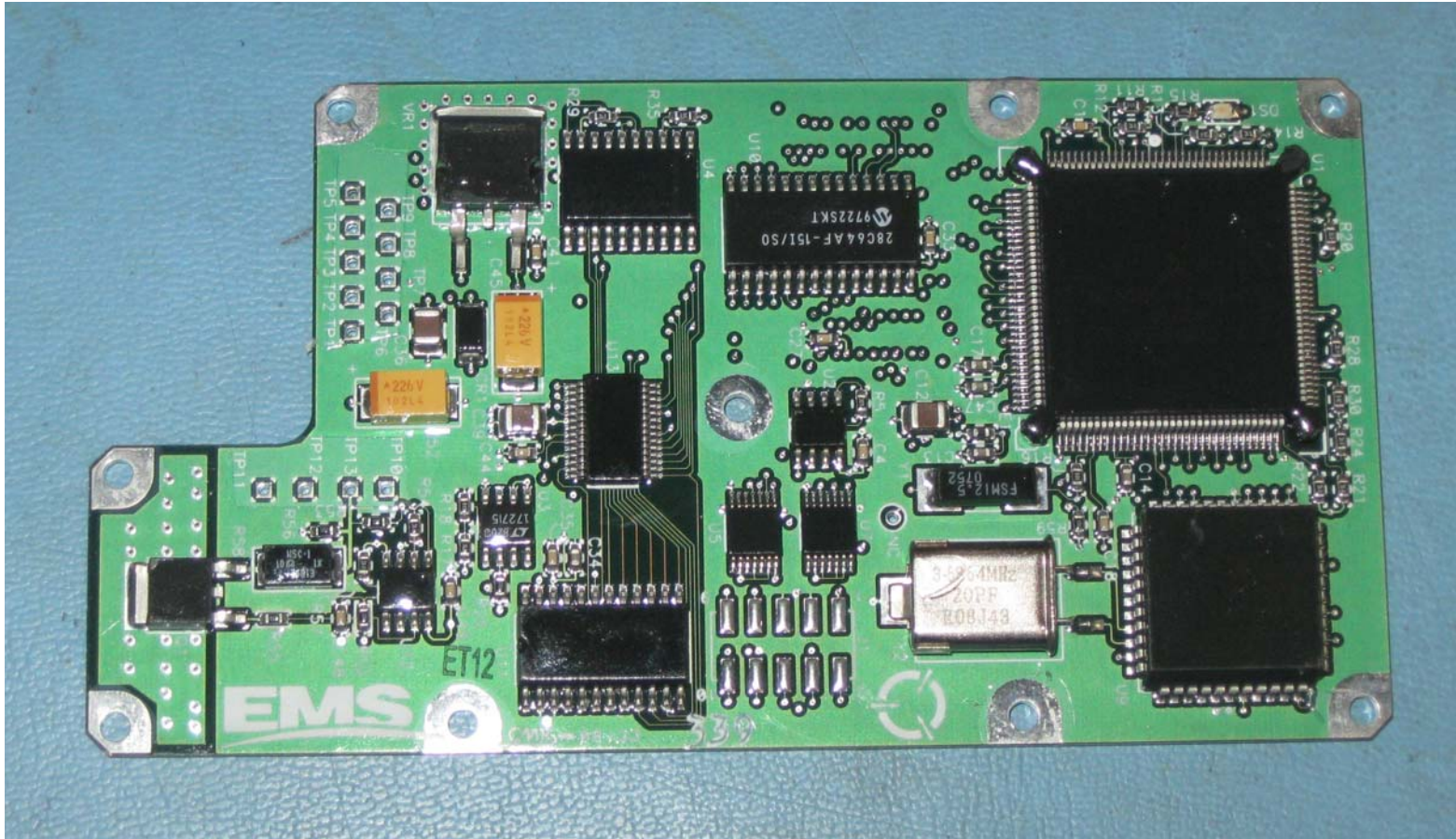


Figure 17: 1110-A-0130 \_1110-A-0132 Control Card CCA Top (Part of the RF Control Module)

**CONFIDENTIAL, UNPUBLISHED PROPERTY OF ONE OR MORE OF THE FOLLOWING - EMS TECHNOLOGIES CANADA, LTD., FORMATION INC., SKY CONNECT LLC (COLLECTIVELY "EMS AVIATION").**

**USE AND DISTRIBUTION LIMITED SOLELY TO AUTHORIZED PERSONNEL**

The use, disclosure, reproduction, modification, transfer or transmittal of this work for any purpose, in any form, or by any means without the prior written permission of EMS Aviation is strictly prohibited. This document does not contain technical data as defined in the International Traffic and Arms Regulations (ITAR) 22 CFR 120-130.

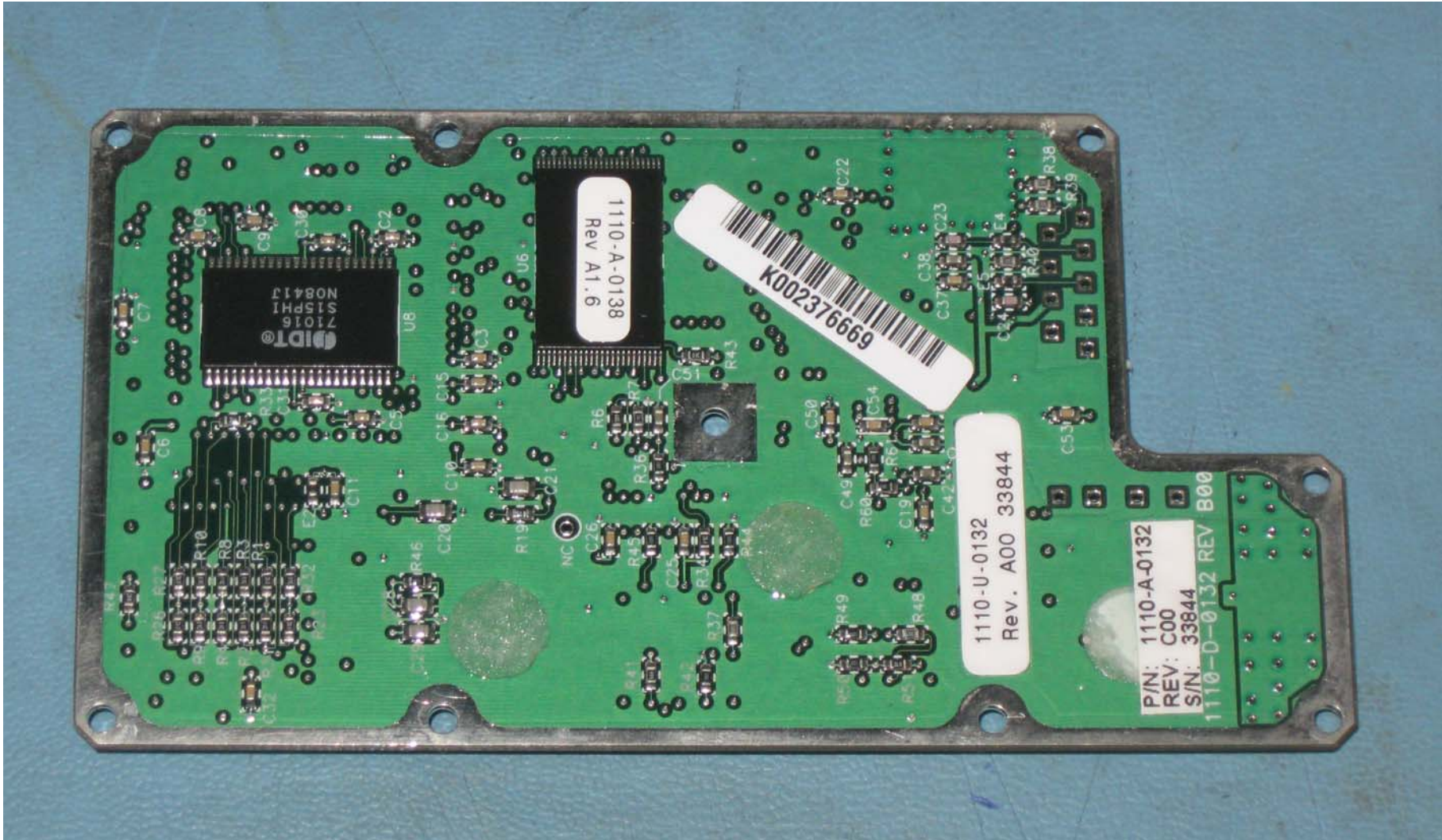
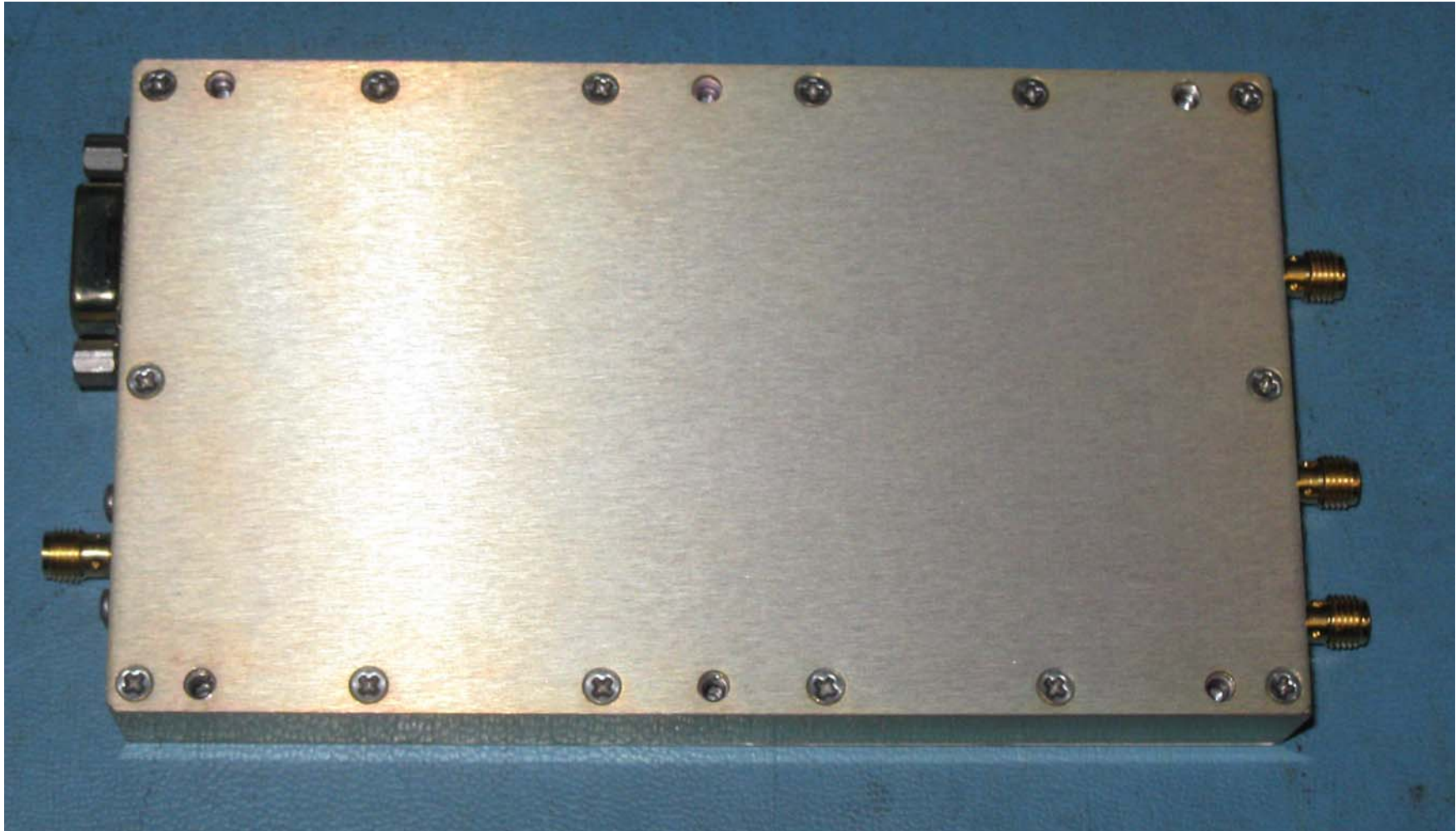


Figure 18: 1110-A-0130 \_1110-A-0132 Control Card CCA Bottom (Part of the RF Control Module)

CONFIDENTIAL, UNPUBLISHED PROPERTY OF ONE OR MORE OF THE FOLLOWING - EMS TECHNOLOGIES CANADA, LTD., FORMATION INC., SKY CONNECT LLC (COLLECTIVELY “EMS AVIATION”).

**USE AND DISTRIBUTION LIMITED SOLELY TO AUTHORIZED PERSONNEL**

The use, disclosure, reproduction, modification, transfer or transmittal of this work for any purpose, in any form, or by any means without the prior written permission of EMS Aviation is strictly prohibited. This document does not contain technical data as defined in the International Traffic and Arms Regulations (ITAR) 22 CFR 120-130.



**Figure 19: 1110-A-0130 RF Control Module Bottom**

**CONFIDENTIAL, UNPUBLISHED PROPERTY OF ONE OR MORE OF THE FOLLOWING - EMS TECHNOLOGIES CANADA, LTD., FORMATION INC., SKY CONNECT LLC (COLLECTIVELY "EMS AVIATION").**

**USE AND DISTRIBUTION LIMITED SOLELY TO AUTHORIZED PERSONNEL**

The use, disclosure, reproduction, modification, transfer or transmittal of this work for any purpose, in any form, or by any means without the prior written permission of EMS Aviation is strictly prohibited. This document does not contain technical data as defined in the International Traffic and Arms Regulations (ITAR) 22 CFR 120-130.



**Figure 20: Interconnections Front View**

**CONFIDENTIAL, UNPUBLISHED PROPERTY OF ONE OR MORE OF THE FOLLOWING - EMS TECHNOLOGIES CANADA, LTD., FORMATION INC., SKY CONNECT LLC (COLLECTIVELY "EMS AVIATION").**

**USE AND DISTRIBUTION LIMITED SOLELY TO AUTHORIZED PERSONNEL**

The use, disclosure, reproduction, modification, transfer or transmittal of this work for any purpose, in any form, or by any means without the prior written permission of EMS Aviation is strictly prohibited. This document does not contain technical data as defined in the International Traffic and Arms Regulations (ITAR) 22 CFR 120-130.

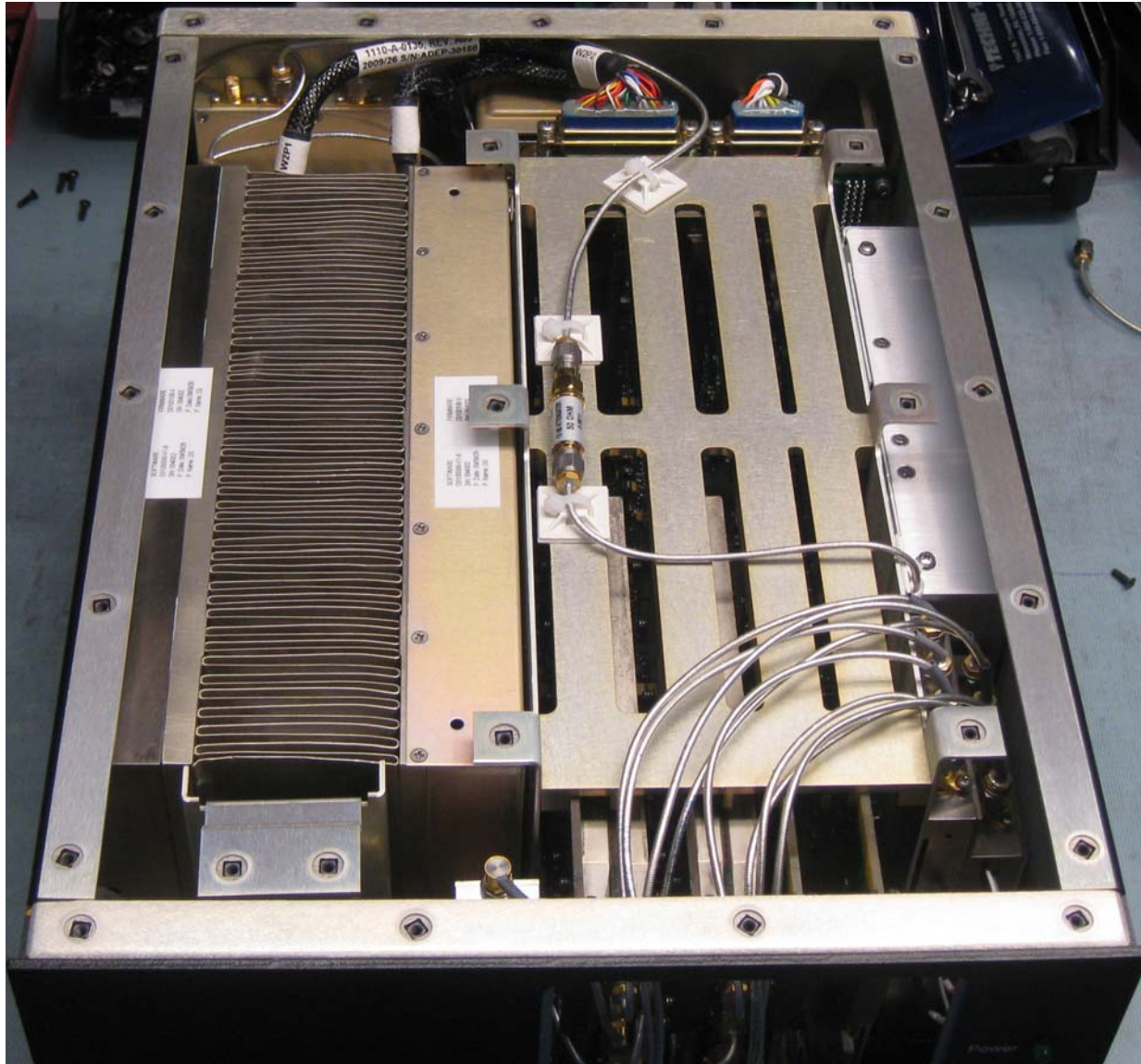


Figure 21: Interconnections Top View

**CONFIDENTIAL, UNPUBLISHED PROPERTY OF ONE OR MORE OF THE FOLLOWING - EMS TECHNOLOGIES CANADA, LTD., FORMATION INC., SKY CONNECT LLC (COLLECTIVELY "EMS AVIATION").**

**USE AND DISTRIBUTION LIMITED SOLELY TO AUTHORIZED PERSONNEL**

The use, disclosure, reproduction, modification, transfer or transmittal of this work for any purpose, in any form, or by any means without the prior written permission of EMS Aviation is strictly prohibited. This document does not contain technical data as defined in the International Traffic and Arms Regulations (ITAR) 22 CFR 120-130.