

List of Figures

<b>Figure 1: 1394-A-1219_A00 CCA FMPA Top View .....</b>	<b>2</b>
<b>Figure 2: 1394-A-1219_B00 CCA FMPA Bottom View .....</b>	<b>3</b>
<b>Figure 3: 1394-A-1219_B00 CCA FMPA Inside the Box View .....</b>	<b>4</b>
<b>Figure 4:1394-F-1240 Rev J PA SCD FMPA Top View .....</b>	<b>5</b>
<b>Figure 5: 1394-F-1240 Rev J PA SCD FMPA Rear View .....</b>	<b>6</b>
<b>Figure 6: 1394-F-1240 Rev J PA SCD FMPA Left Side View.....</b>	<b>6</b>
<b>Figure 7: 1394-F-1240 Rev J PA SCD FMPA Bottom View .....</b>	<b>7</b>
<b>Figure 8: 1394-F-1241 Rev J A781 PS SCD FMPA Bottom View.....</b>	<b>8</b>
<b>Figure 9: 1394-F-1241 Rev J A781 PS SCD FMPA Top View.....</b>	<b>9</b>
<b>Figure 10: 1394-F-1241 Rev J A781 PS SCD FMPA Front View .....</b>	<b>10</b>

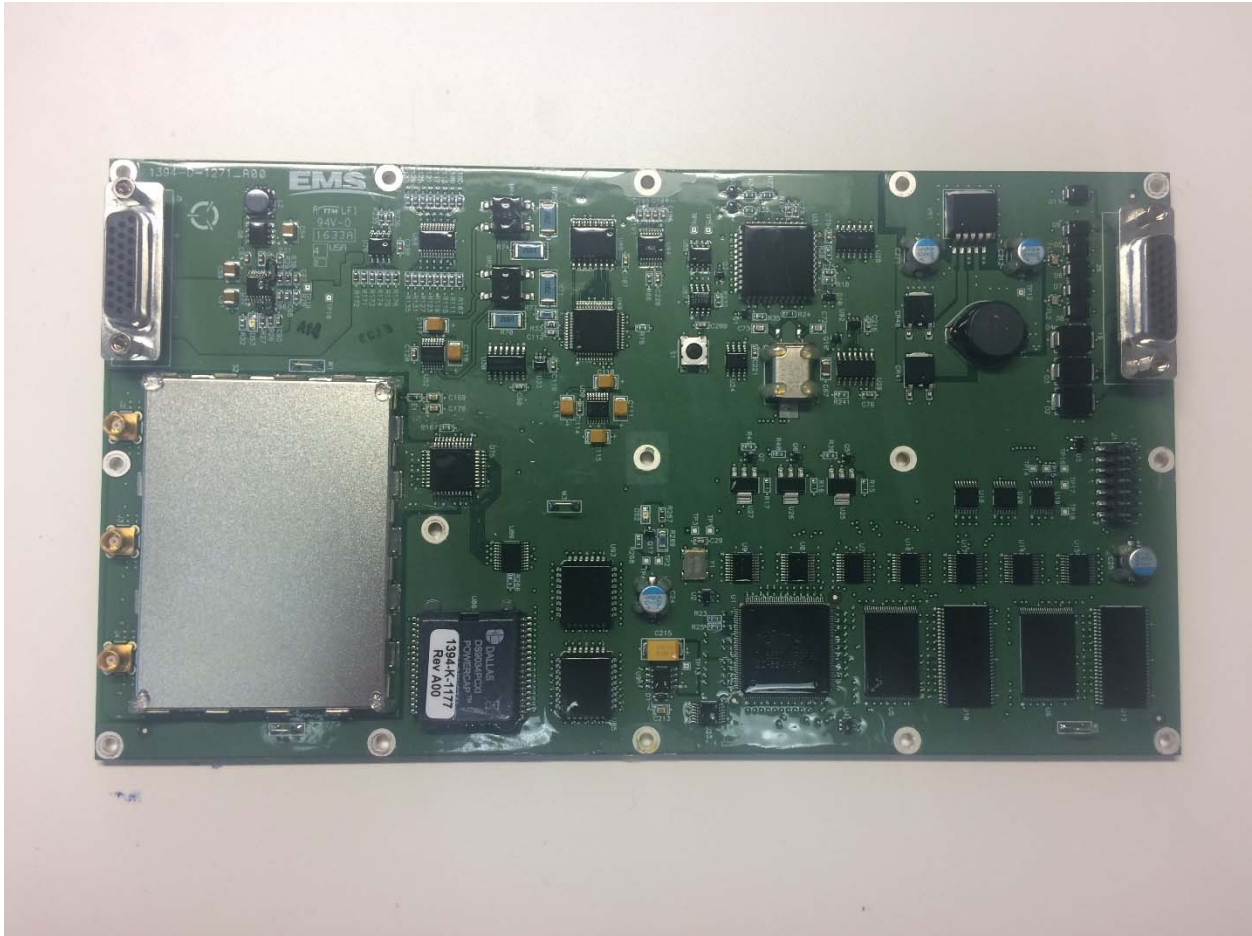


Figure 1: 1394-A-1219\_A00 CCA FMPA Top View

Note:1394-D-1271\_A00 is PCB part number

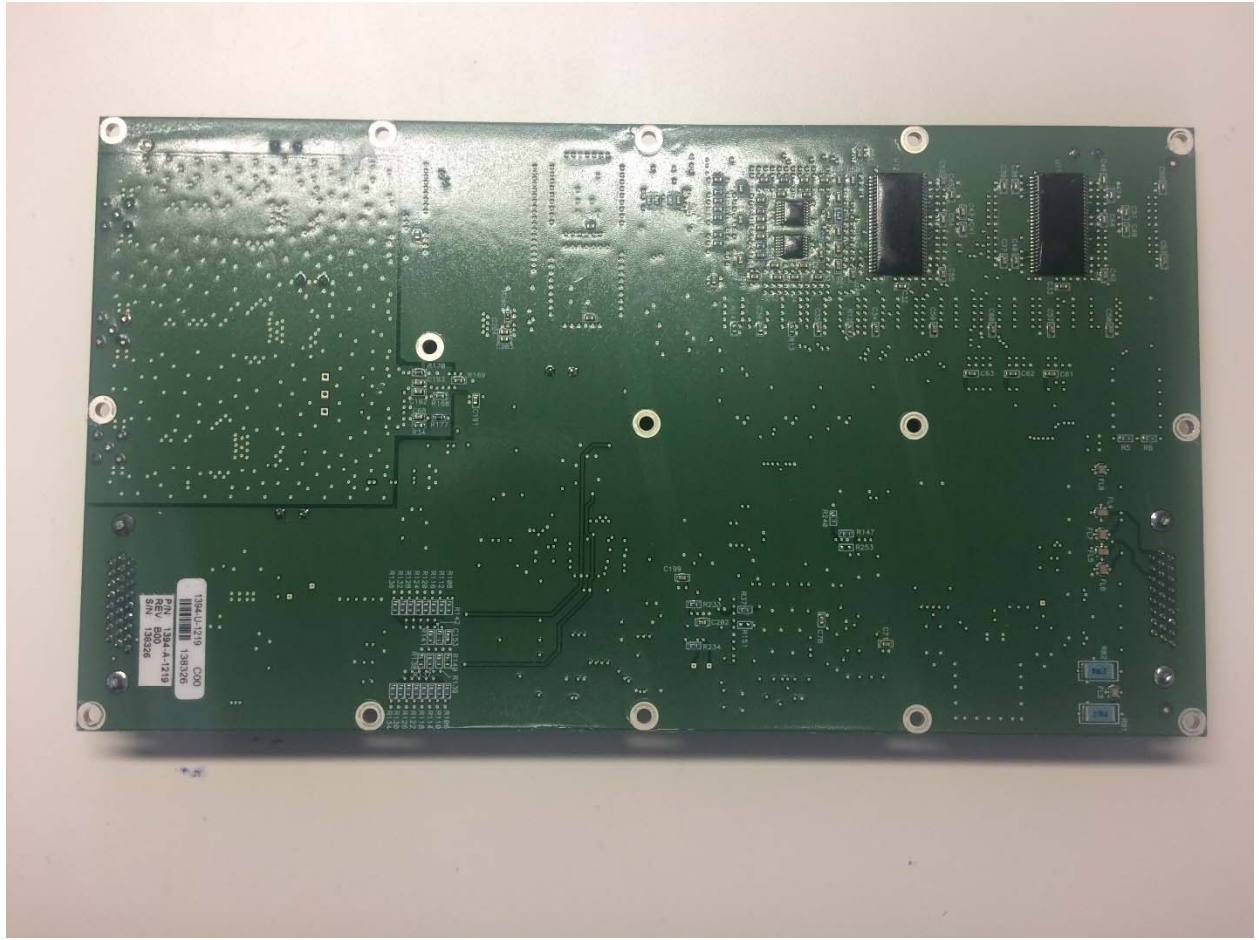


Figure 2: 1394-A-1219\_B00 CCA FMPA Bottom View

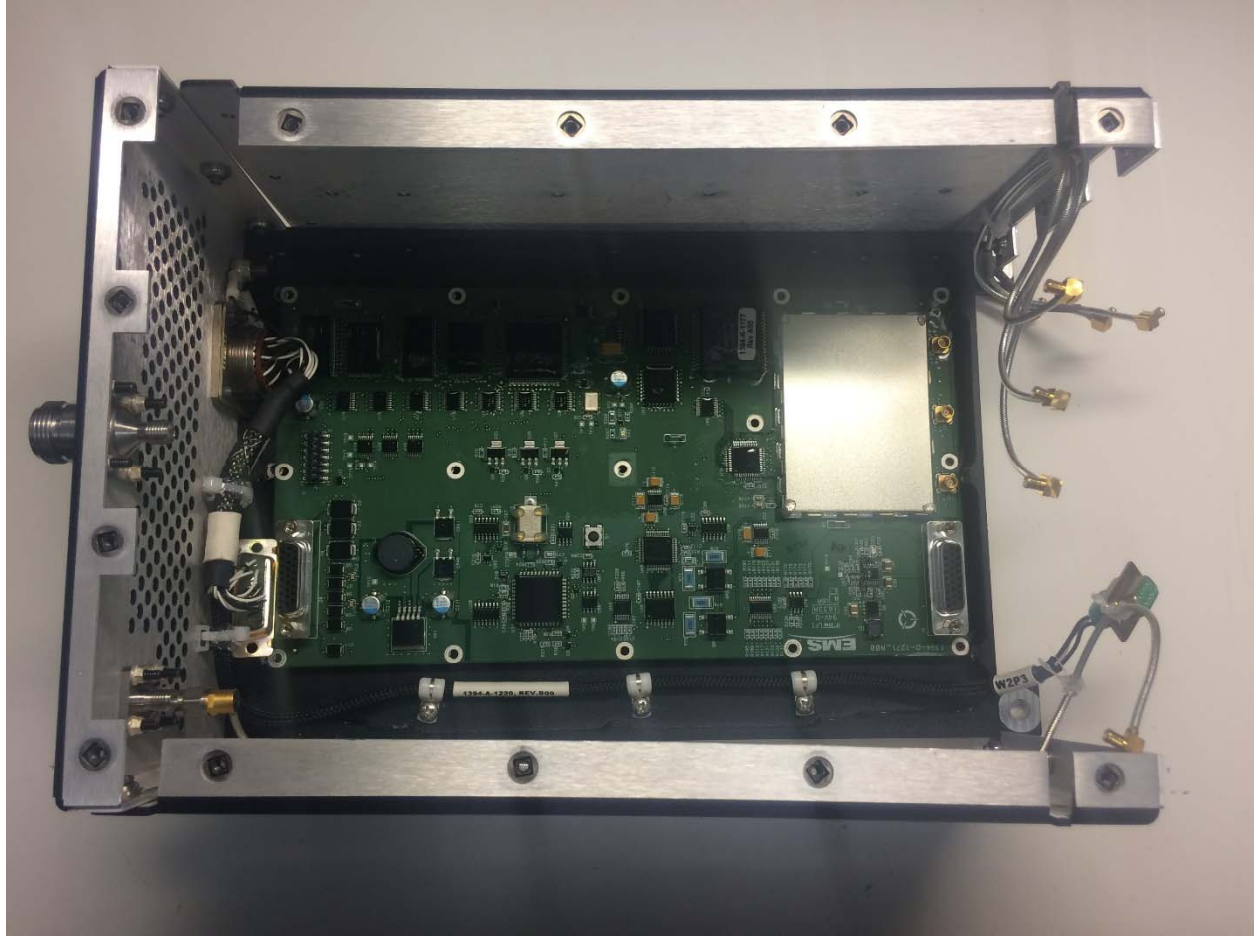


Figure 3: 1394-A-1219\_B00 CCA FMPA Inside the Box View



Figure 4:1394-F-1240 Rev J PA SCD FMPA Top View

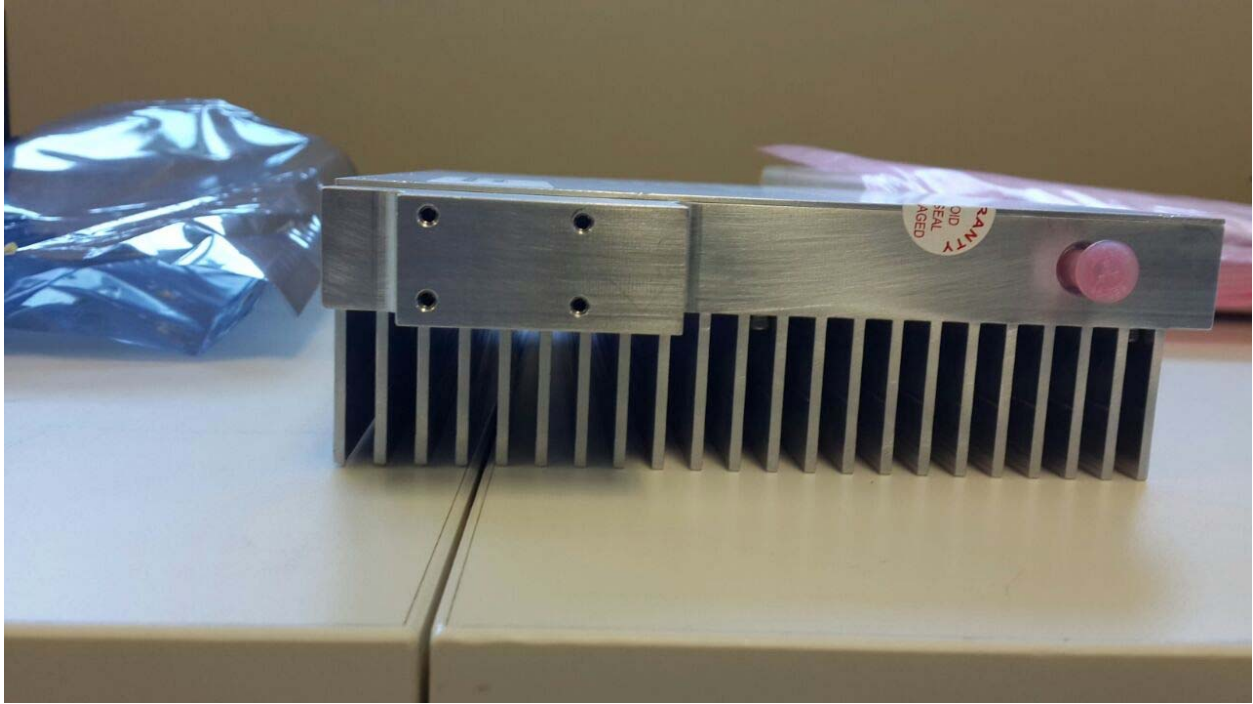


Figure 5: 1394-F-1240 Rev J PA SCD FMPA Rear View

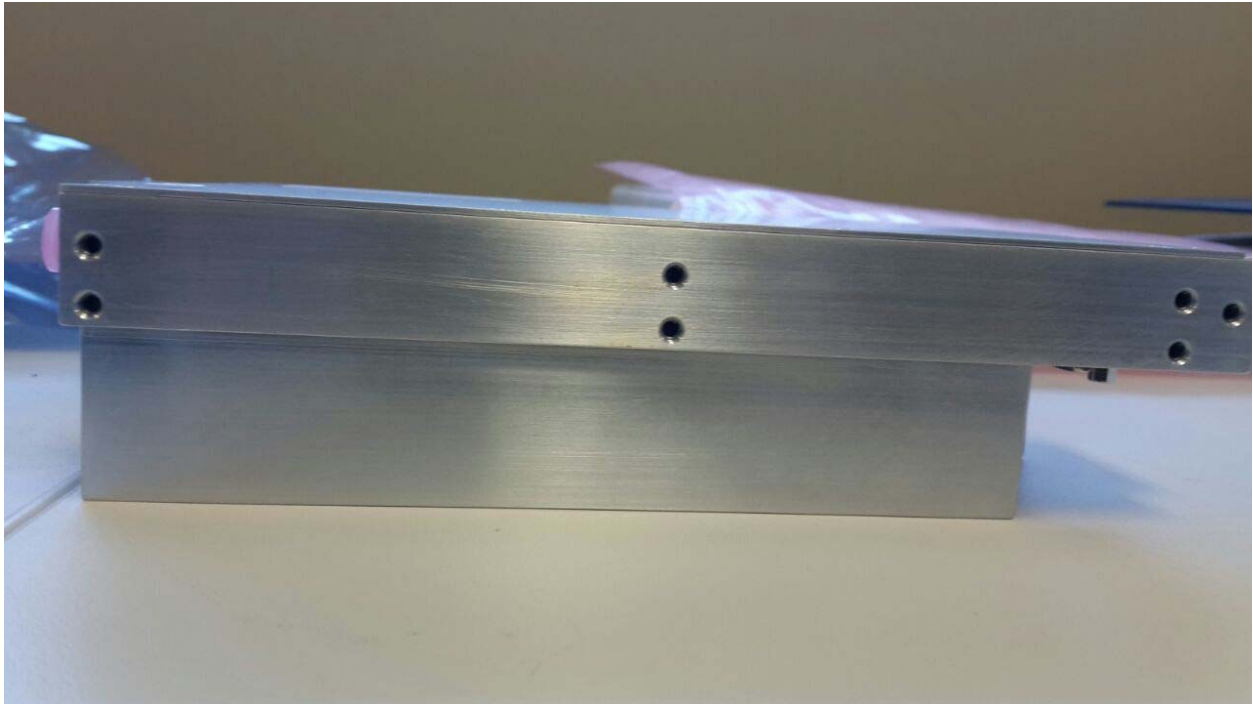


Figure 6: 1394-F-1240 Rev J PA SCD FMPA Left Side View



Figure 7: 1394-F-1240 Rev J PA SCD FMPA Bottom View

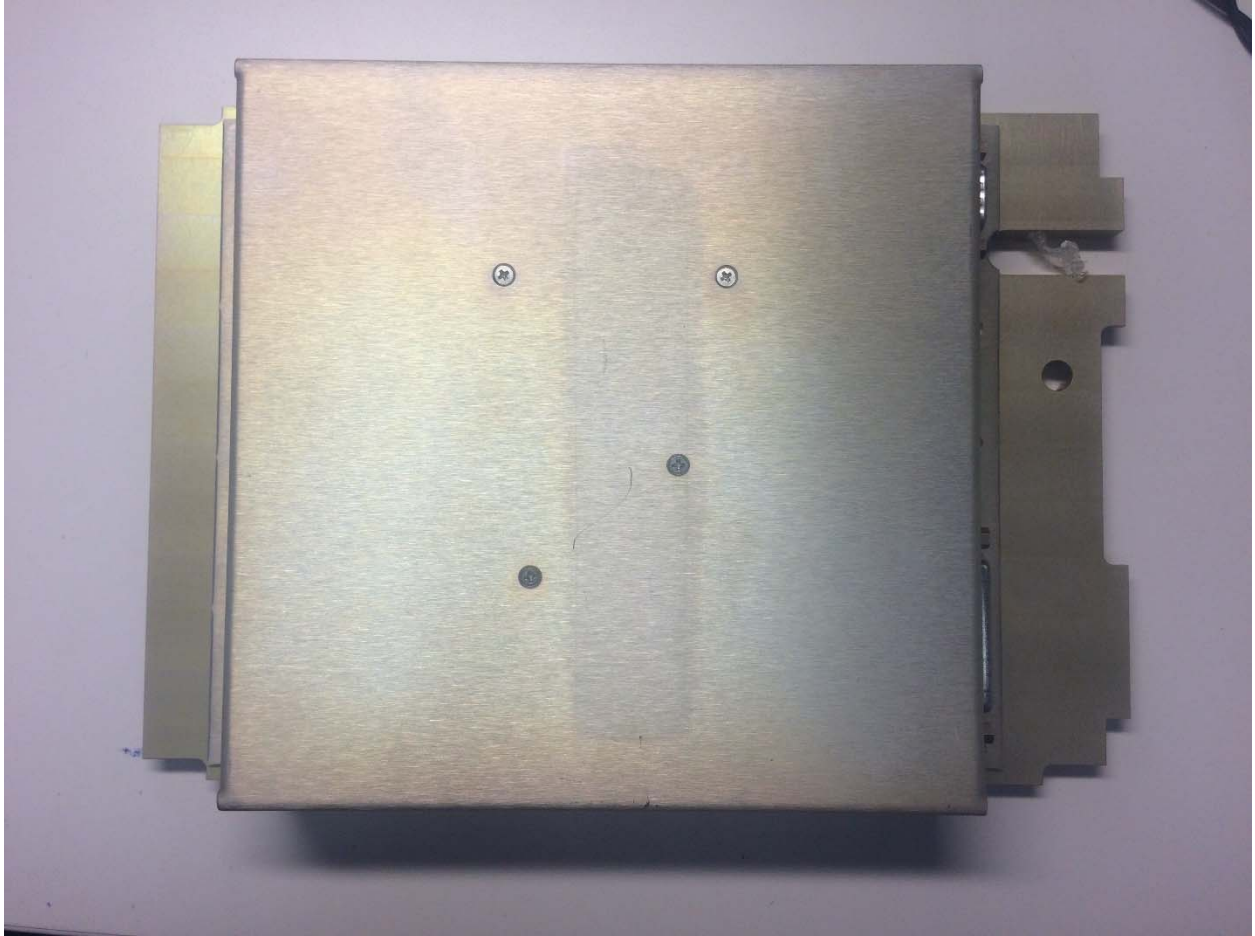


Figure 8: 1394-F-1241 Rev J A781 PS SCD FMPA Bottom View



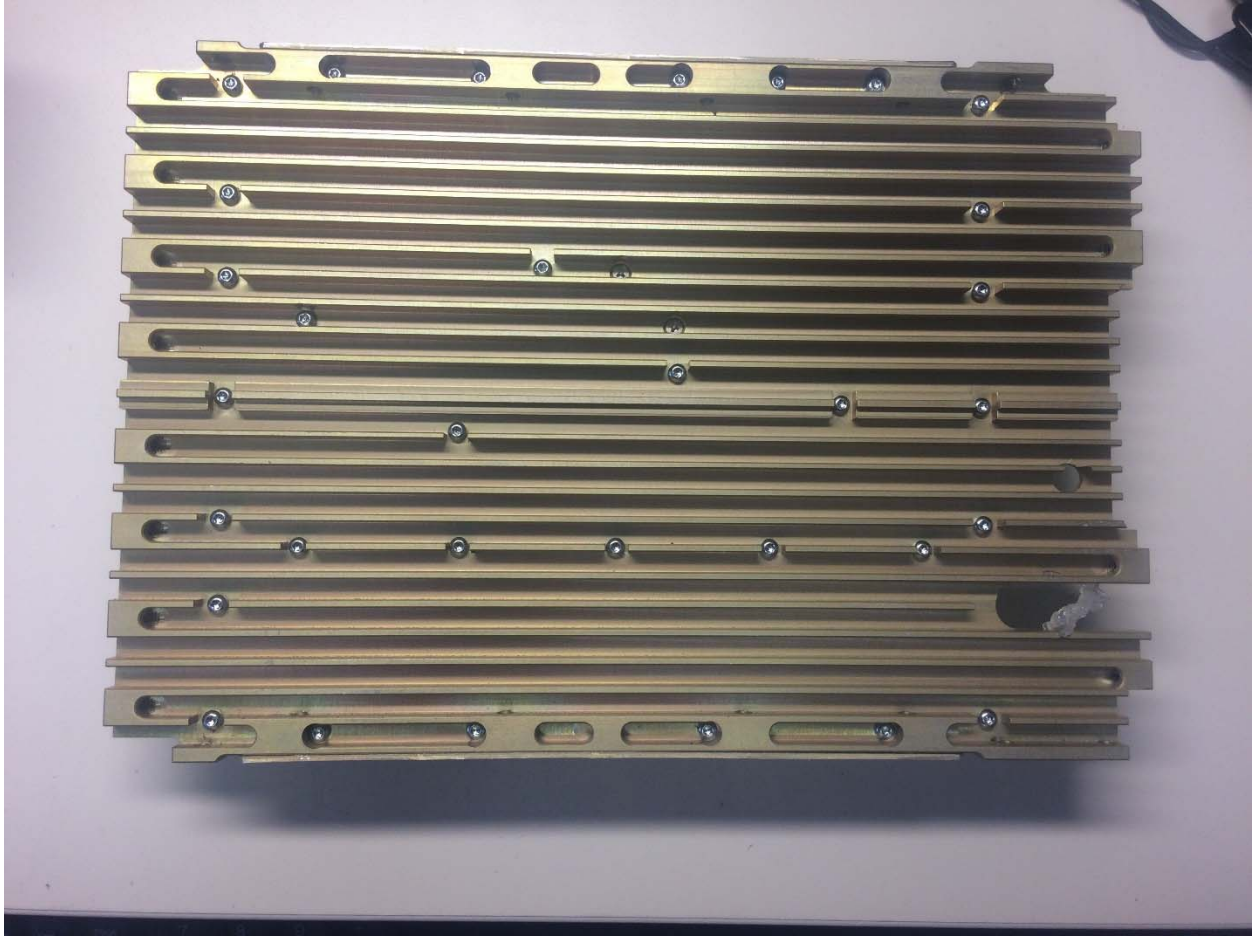


Figure 9: 1394-F-1241 Rev J A781 PS SCD FMPA Top View



Figure 10: 1394-F-1241 Rev J A781 PS SCD FMPA Front View