

LIST OF FIGURES

FIGURE 1: 1394-A-1103 CONTROL PROCESSOR TOP	2
FIGURE 2: 1394-A-1103 CONTROL PROCESSOR BOTTOM	3
FIGURE 3: 1210-A-0010-02 BGAN 2 CHANNEL CARD TOP	4
FIGURE 4: 1210-A-0010-02 BGAN 2 CHANNEL CARD BOTTOM	5
FIGURE 5: 1210-A-0010-01 BGAN 1 CHANNEL CARD TOP	6
FIGURE 6: 1210-A-0010-01 BGAN 1 CHANNEL CARD BOTTOM	7
FIGURE 7: 1210-A-0002-01 HSD DIGITAL MODULE TOP (PART OF THE BGAN 1 AND BGAN 2 CHANNEL CARDS)	8
FIGURE 8: 1210-A-0002-01 HSD DIGITAL MODULE BOTTOM (PART OF THE BGAN 1 AND BGAN 2 CHANNEL CARDS)	9
FIGURE 9: 1210-A-0003 RF MODULE TOP (PART OF THE BGAN 1 AND BGAN 2 CHANNEL CARDS)	10
FIGURE 10: 1210-A-0003 RF MODULE BOTTOM (PART OF THE BGAN 1 AND BGAN 2 CHANNEL CARDS)	10
FIGURE 12: 1394-F-1117 OXCO TOP	11
FIGURE 13: 1394-F-1117 OXCO BOTTOM	12
FIGURE 14: 1394-F-1117 OXCO INSTALLED	13
FIGURE 15: 1394-F-1141 SDU POWER SUPPLY TOP	14
FIGURE 16: 1394-F-1141 SDU POWER SUPPLY BOTTOM	15
FIGURE 17: 1394-F-1140 SDU POWER AMPLIFIER TOP	16
FIGURE 18: 1394-F-1140 SDU POWER AMPLIFIER BOTTOM	17
FIGURE 19: INTERCONNECTIONS	18

CONFIDENTIAL, UNPUBLISHED PROPERTY OF ONE OR MORE OF THE FOLLOWING - EMS TECHNOLOGIES CANADA, LTD., FORMATION INC., SKY CONNECT LLC (COLLECTIVELY “EMS AVIATION”).

USE AND DISTRIBUTION LIMITED SOLELY TO AUTHORIZED PERSONNEL

The use, disclosure, reproduction, modification, transfer or transmittal of this work for any purpose, in any form, or by any means without the prior written permission of EMS Aviation is strictly prohibited. This document does not contain technical data as defined in the International Traffic and Arms Regulations (ITAR) 22 CFR 120-130.

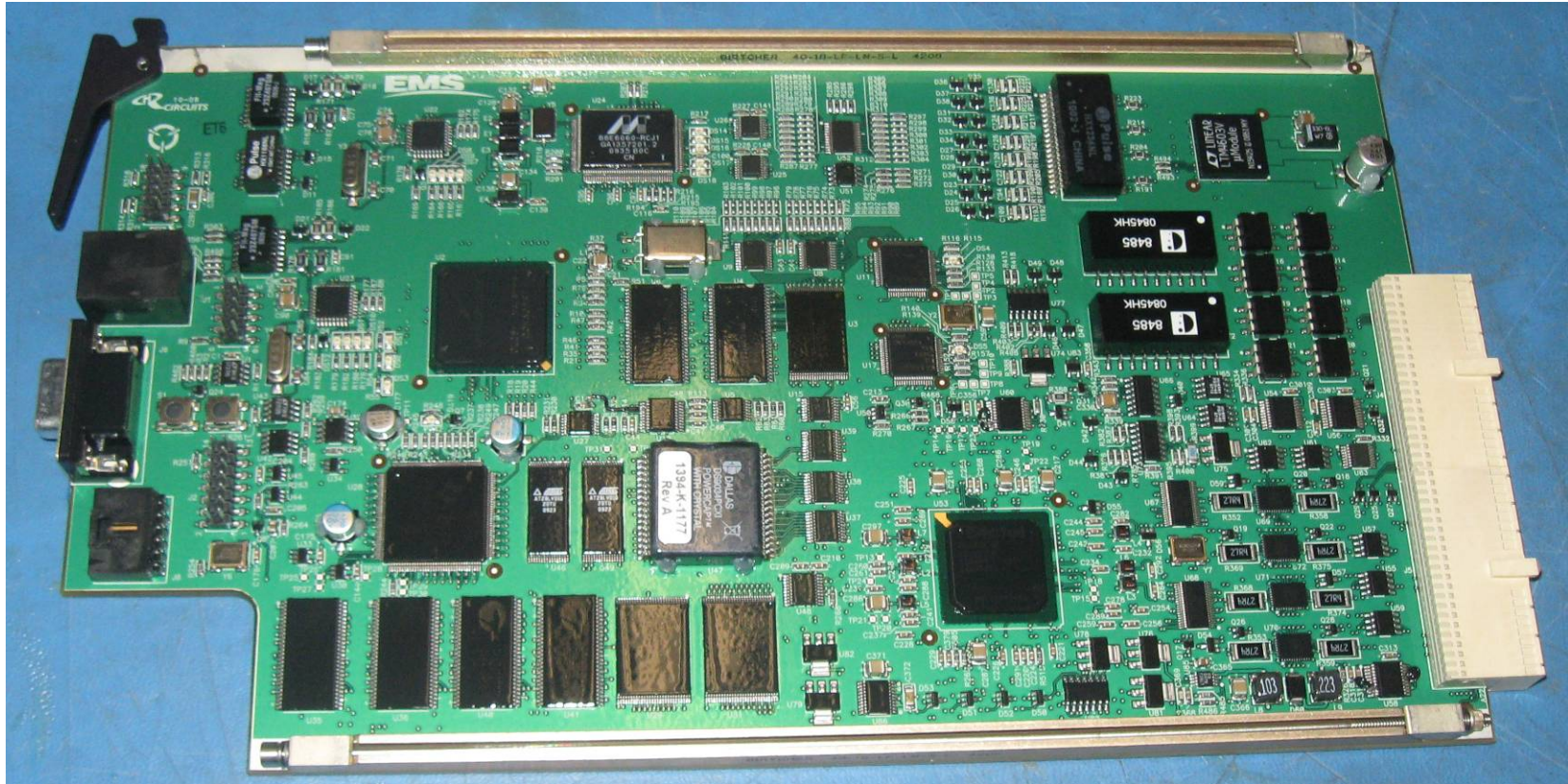


Figure 1: 1394-A-1103 Control Processor Top

CONFIDENTIAL, UNPUBLISHED PROPERTY OF ONE OR MORE OF THE FOLLOWING - EMS TECHNOLOGIES CANADA, LTD., FORMATION INC., SKY CONNECT LLC (COLLECTIVELY “EMS AVIATION”).

USE AND DISTRIBUTION LIMITED SOLELY TO AUTHORIZED PERSONNEL

The use, disclosure, reproduction, modification, transfer or transmittal of this work for any purpose, in any form, or by any means without the prior written permission of EMS Aviation is strictly prohibited. This document does not contain technical data as defined in the International Traffic and Arms Regulations (ITAR) 22 CFR 120-130.

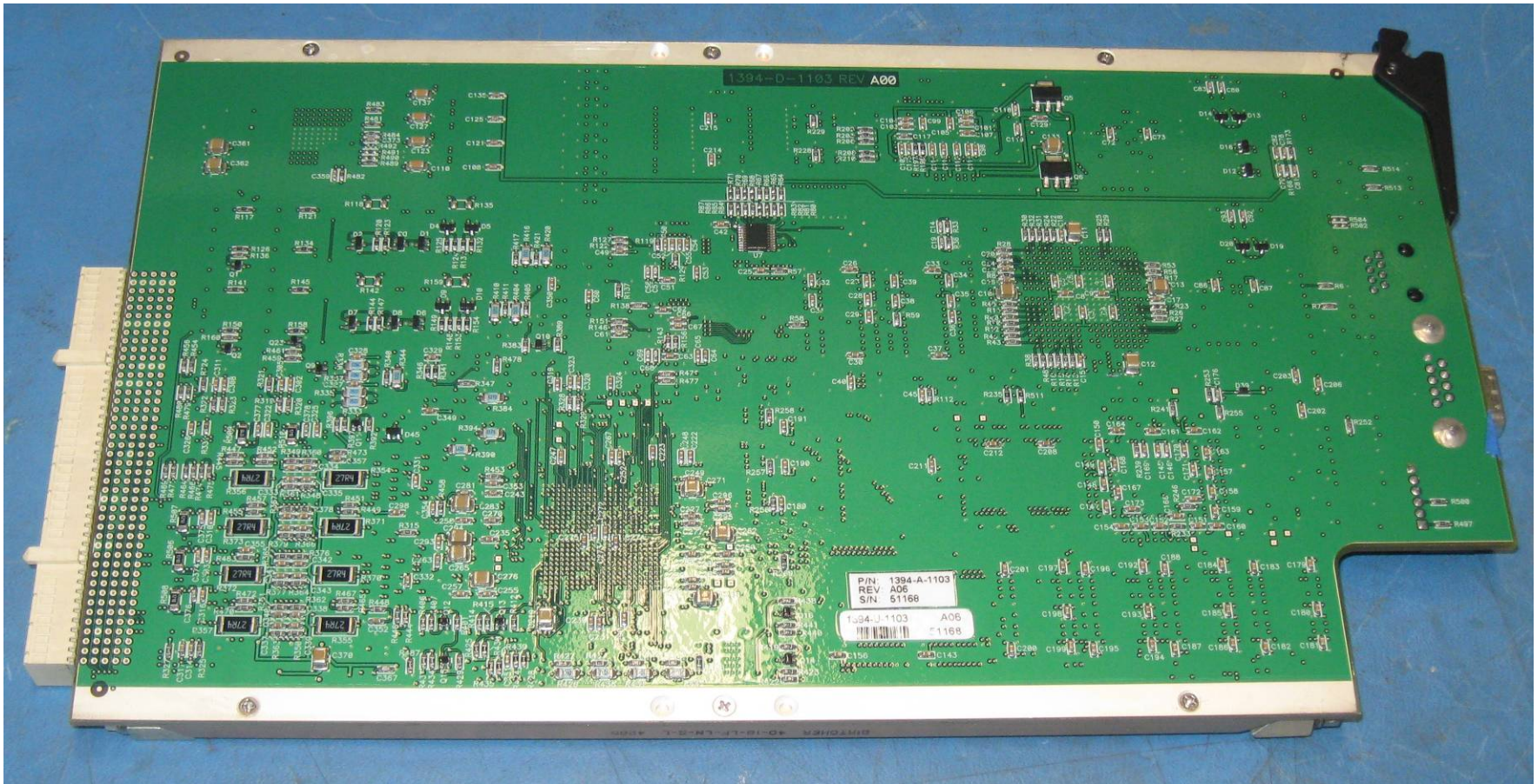


Figure 2: 1394-A-1103 Control Processor Bottom

CONFIDENTIAL, UNPUBLISHED PROPERTY OF ONE OR MORE OF THE FOLLOWING - EMS TECHNOLOGIES CANADA, LTD., FORMATION INC., SKY CONNECT LLC (COLLECTIVELY “EMS AVIATION”).

USE AND DISTRIBUTION LIMITED SOLELY TO AUTHORIZED PERSONNEL

The use, disclosure, reproduction, modification, transfer or transmittal of this work for any purpose, in any form, or by any means without the prior written permission of EMS Aviation is strictly prohibited. This document does not contain technical data as defined in the International Traffic and Arms Regulations (ITAR) 22 CFR 120-130.

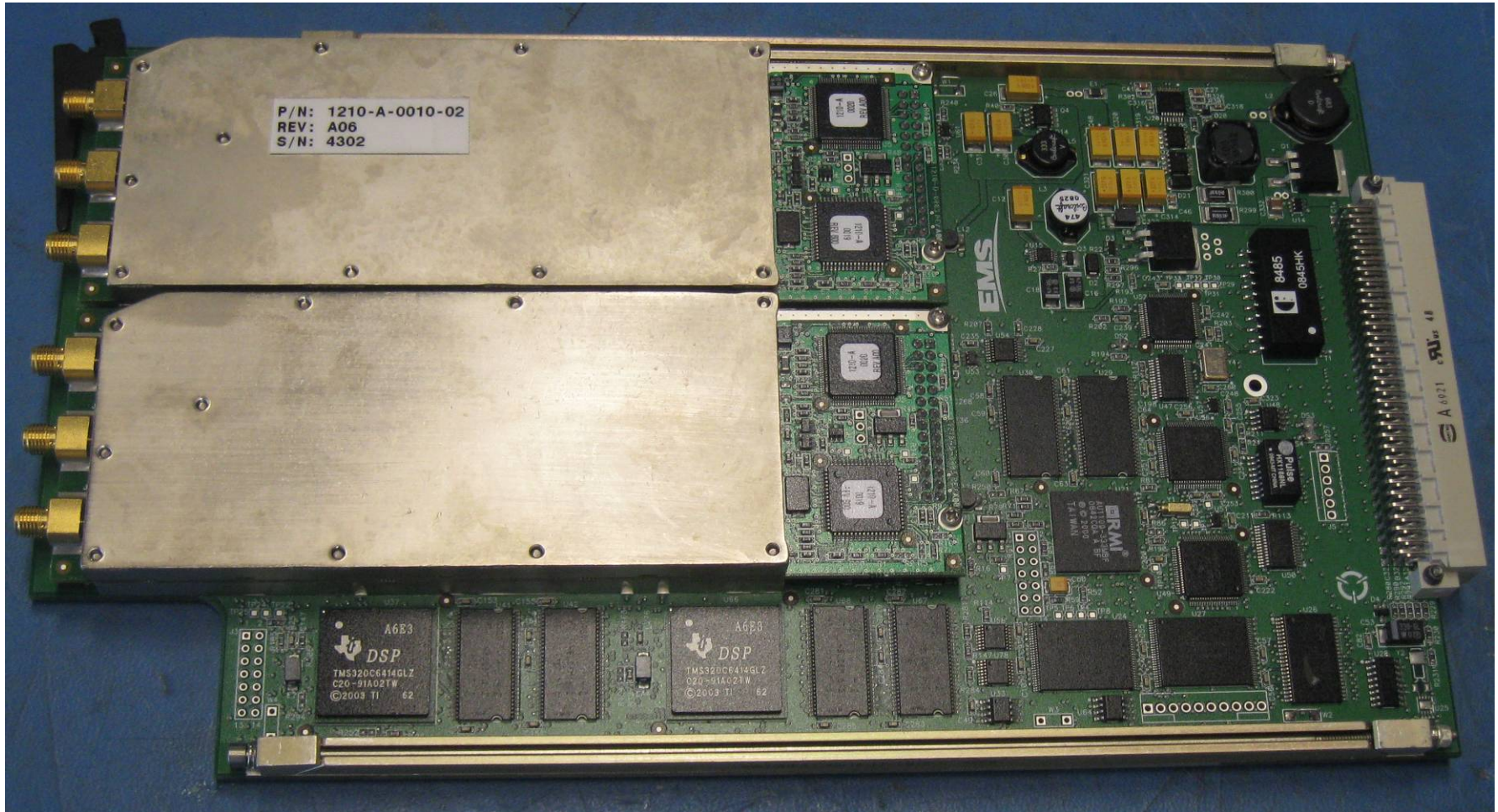


Figure 3: 1210-A-0010-02 BGAN 2 Channel Card Top

CONFIDENTIAL, UNPUBLISHED PROPERTY OF ONE OR MORE OF THE FOLLOWING - EMS TECHNOLOGIES CANADA, LTD., FORMATION INC., SKY CONNECT LLC (COLLECTIVELY “EMS AVIATION”).

USE AND DISTRIBUTION LIMITED SOLELY TO AUTHORIZED PERSONNEL

The use, disclosure, reproduction, modification, transfer or transmittal of this work for any purpose, in any form, or by any means without the prior written permission of EMS Aviation is strictly prohibited. This document does not contain technical data as defined in the International Traffic and Arms Regulations (ITAR) 22 CFR 120-130.

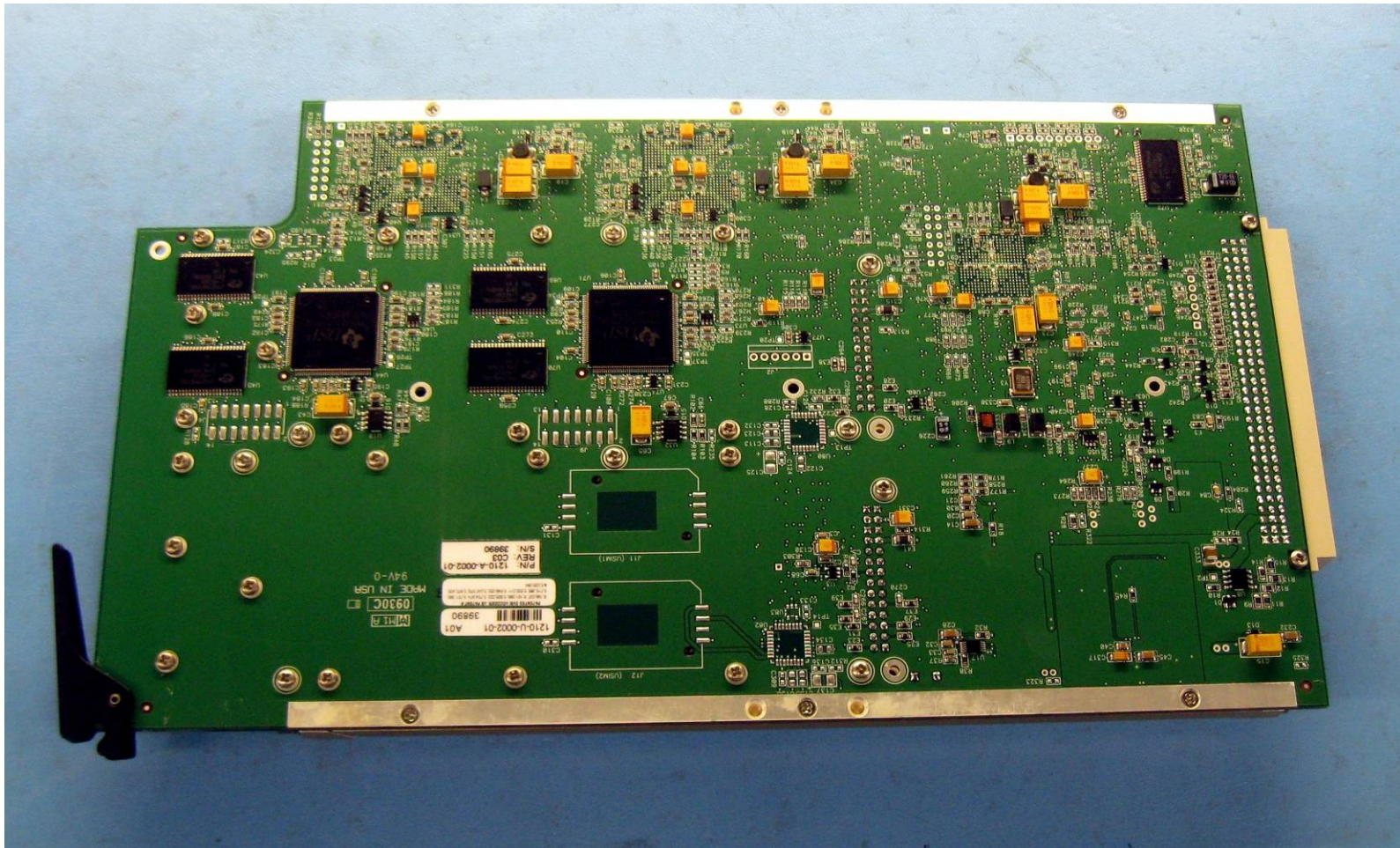


Figure 4: 1210-A-0010-02 BGAN 2 Channel Card Bottom

CONFIDENTIAL, UNPUBLISHED PROPERTY OF ONE OR MORE OF THE FOLLOWING - EMS TECHNOLOGIES CANADA, LTD., FORMATION INC., SKY CONNECT LLC (COLLECTIVELY “EMS AVIATION”).

USE AND DISTRIBUTION LIMITED SOLELY TO AUTHORIZED PERSONNEL

The use, disclosure, reproduction, modification, transfer or transmittal of this work for any purpose, in any form, or by any means without the prior written permission of EMS Aviation is strictly prohibited. This document does not contain technical data as defined in the International Traffic and Arms Regulations (ITAR) 22 CFR 120-130.

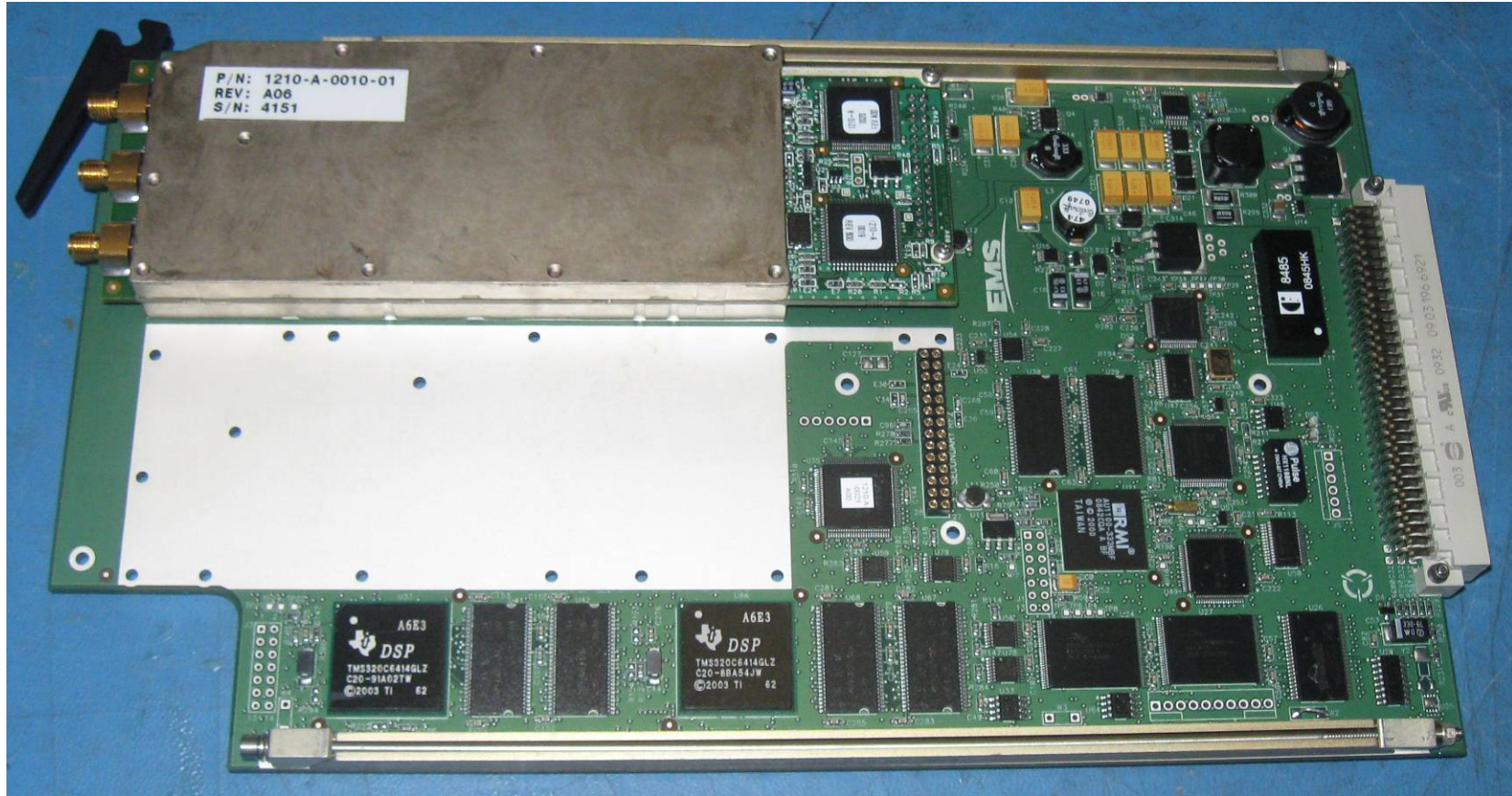


Figure 5:1210-A-0010-01 BGAN 1 Channel Card Top

CONFIDENTIAL, UNPUBLISHED PROPERTY OF ONE OR MORE OF THE FOLLOWING - EMS TECHNOLOGIES CANADA, LTD., FORMATION INC., SKY CONNECT LLC (COLLECTIVELY "EMS AVIATION").

USE AND DISTRIBUTION LIMITED SOLELY TO AUTHORIZED PERSONNEL

The use, disclosure, reproduction, modification, transfer or transmittal of this work for any purpose, in any form, or by any means without the prior written permission of EMS Aviation is strictly prohibited. This document does not contain technical data as defined in the International Traffic and Arms Regulations (ITAR) 22 CFR 120-130.

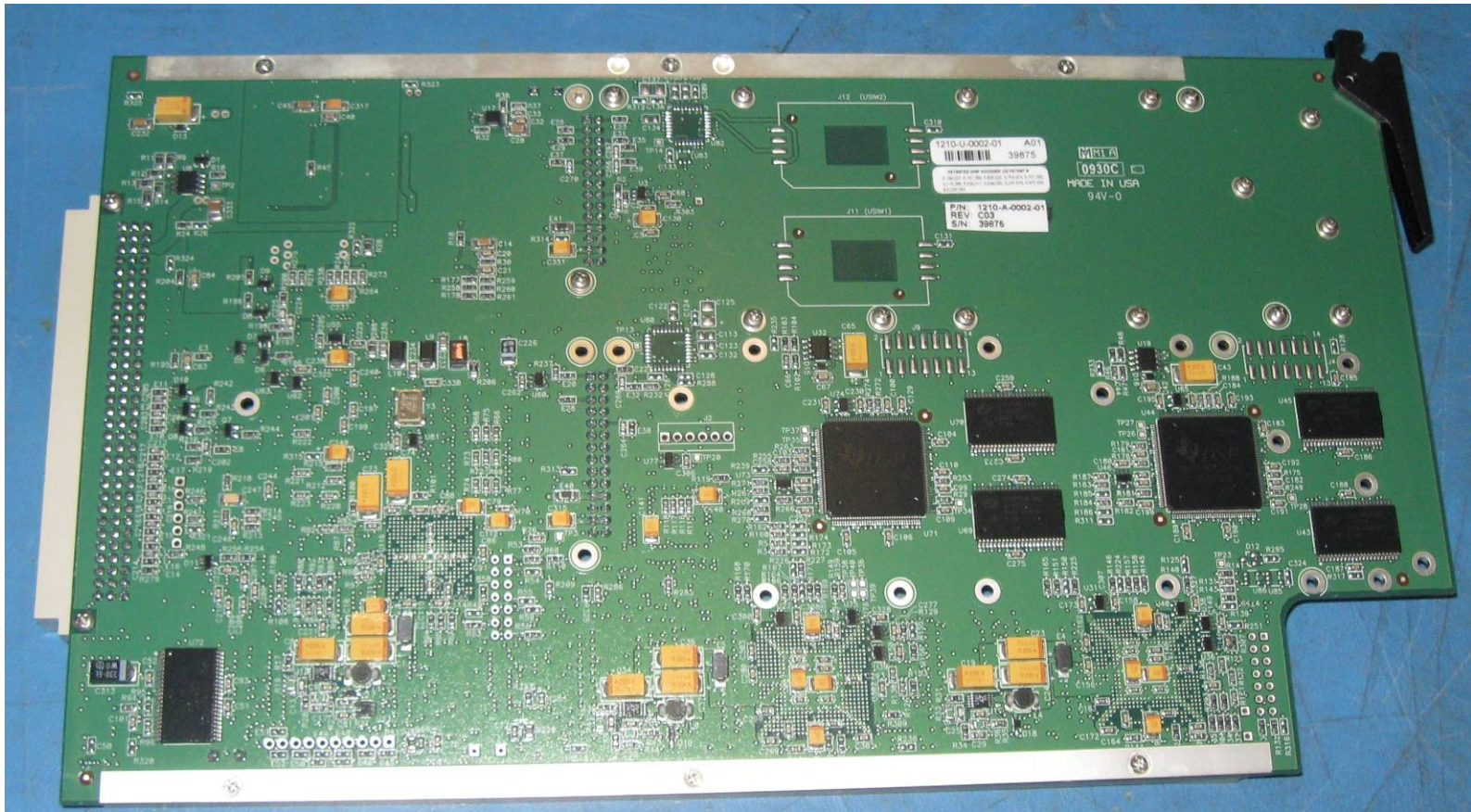


Figure 6: 1210-A-0010-01 BGAN 1 Channel Card Bottom

CONFIDENTIAL, UNPUBLISHED PROPERTY OF ONE OR MORE OF THE FOLLOWING - EMS TECHNOLOGIES CANADA, LTD., FORMATION INC., SKY CONNECT LLC (COLLECTIVELY "EMS AVIATION").

USE AND DISTRIBUTION LIMITED SOLELY TO AUTHORIZED PERSONNEL

The use, disclosure, reproduction, modification, transfer or transmittal of this work for any purpose, in any form, or by any means without the prior written permission of EMS Aviation is strictly prohibited. This document does not contain technical data as defined in the International Traffic and Arms Regulations (ITAR) 22 CFR 120-130.

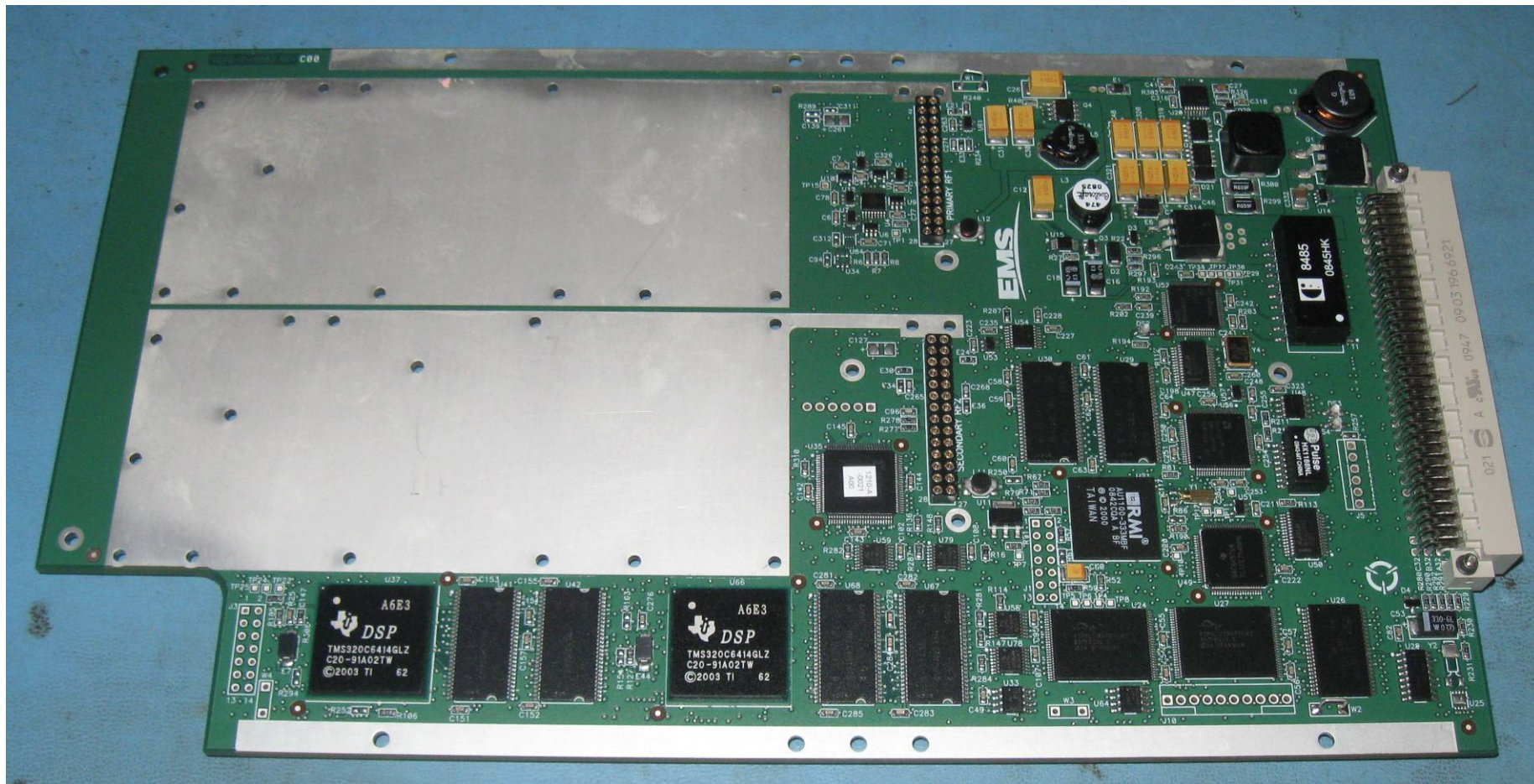


Figure 7: 1210-A-0002-01 HSD Digital Module Top (Part of the BGAN 1 and BGAN 2 Channel Cards)

CONFIDENTIAL, UNPUBLISHED PROPERTY OF ONE OR MORE OF THE FOLLOWING - EMS TECHNOLOGIES CANADA, LTD., FORMATION INC., SKY CONNECT LLC (COLLECTIVELY "EMS AVIATION").

USE AND DISTRIBUTION LIMITED SOLELY TO AUTHORIZED PERSONNEL

The use, disclosure, reproduction, modification, transfer or transmittal of this work for any purpose, in any form, or by any means without the prior written permission of EMS Aviation is strictly prohibited. This document does not contain technical data as defined in the International Traffic and Arms Regulations (ITAR) 22 CFR 120-130.

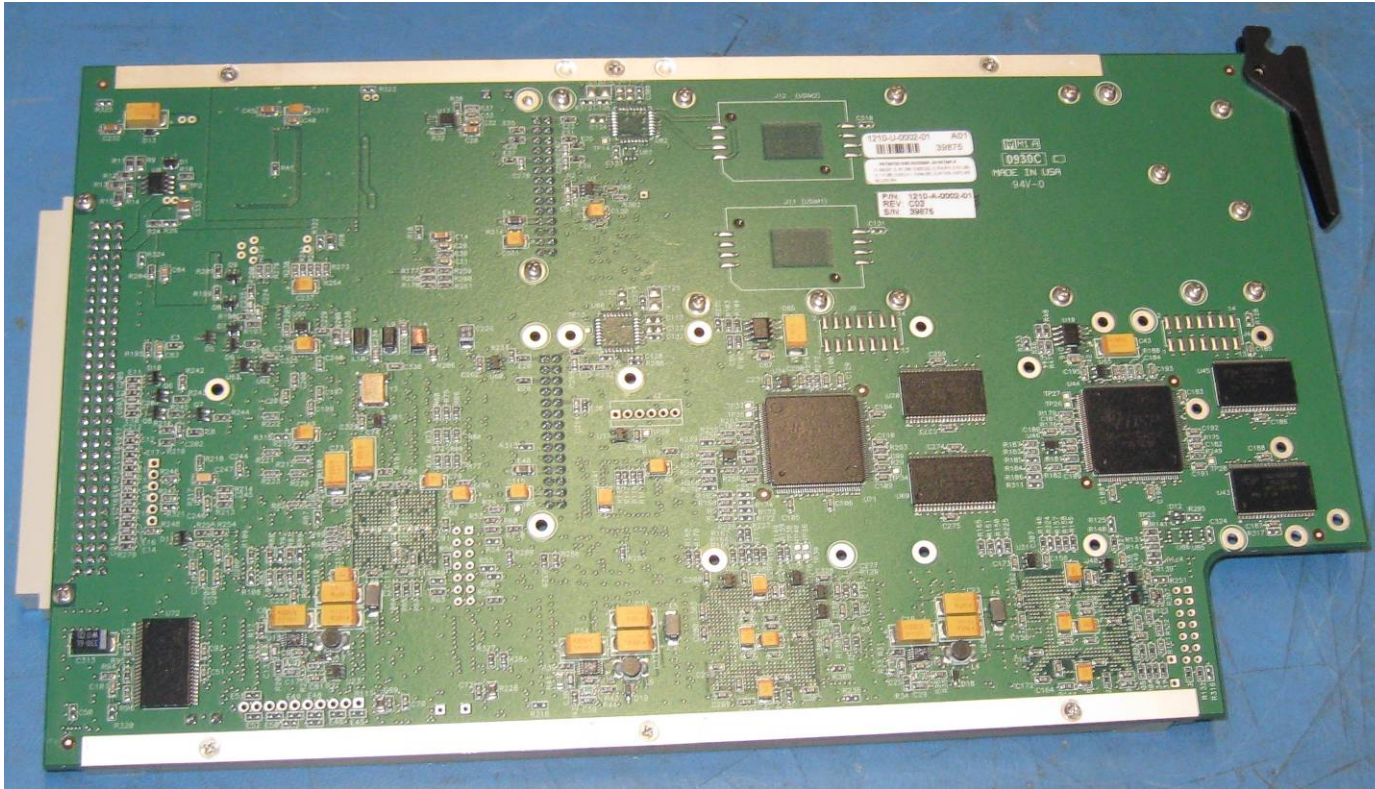


Figure 8: 1210-A-0002-01 HSD Digital Module Bottom (Part of the BGAN 1 and BGAN 2 Channel Cards)

CONFIDENTIAL, UNPUBLISHED PROPERTY OF ONE OR MORE OF THE FOLLOWING - EMS TECHNOLOGIES CANADA, LTD., FORMATION INC., SKY CONNECT LLC (COLLECTIVELY “EMS AVIATION”).

USE AND DISTRIBUTION LIMITED SOLELY TO AUTHORIZED PERSONNEL

The use, disclosure, reproduction, modification, transfer or transmittal of this work for any purpose, in any form, or by any means without the prior written permission of EMS Aviation is strictly prohibited. This document does not contain technical data as defined in the International Traffic and Arms Regulations (ITAR) 22 CFR 120-130.

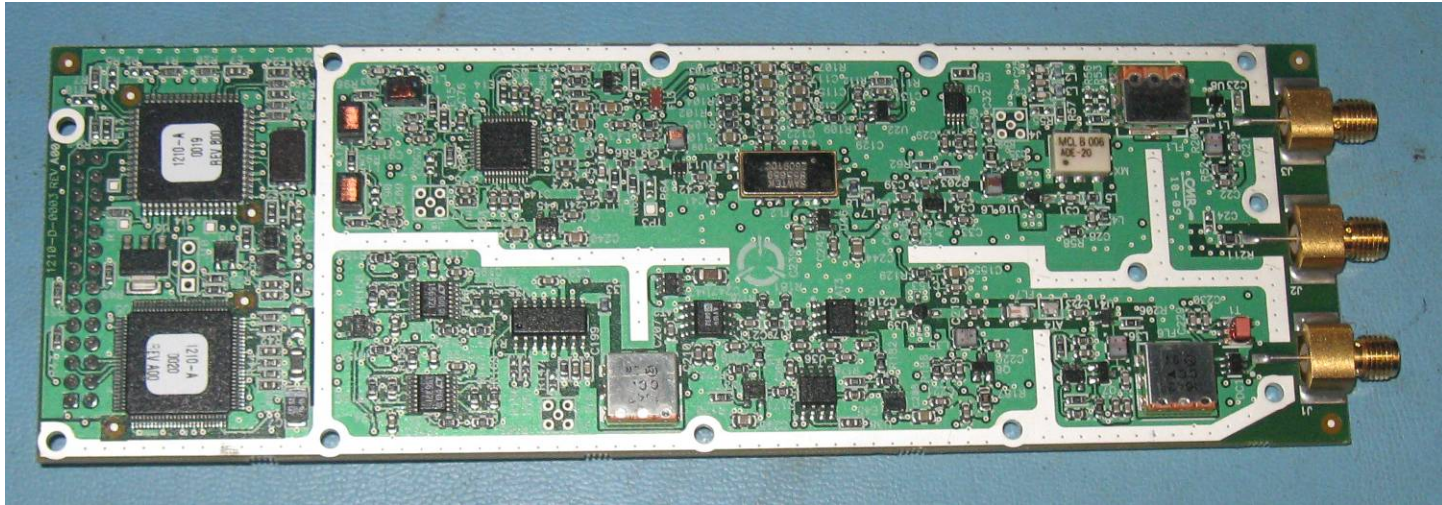


Figure 9: 1210-A-0003 RF Module Top (Part of the BGAN 1 and BGAN 2 Channel Cards)

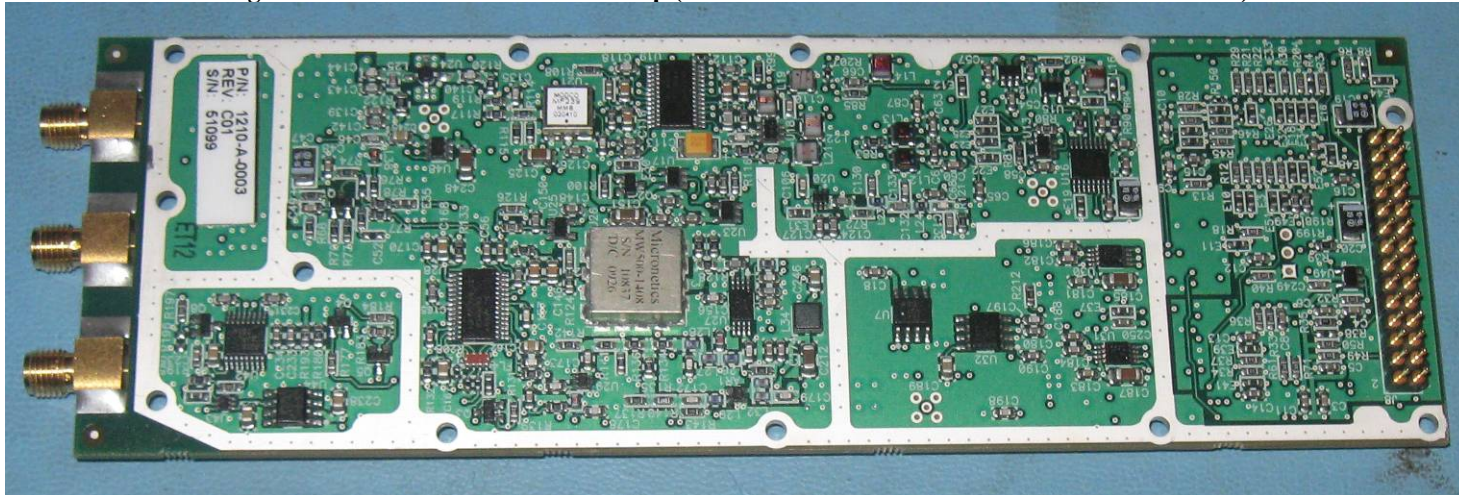


Figure 10: 1210-A-0003 RF Module Bottom (Part of the BGAN 1 and BGAN 2 Channel Cards)

CONFIDENTIAL, UNPUBLISHED PROPERTY OF ONE OR MORE OF THE FOLLOWING - EMS TECHNOLOGIES CANADA, LTD., FORMATION INC., SKY CONNECT LLC (COLLECTIVELY “EMS AVIATION”).

USE AND DISTRIBUTION LIMITED SOLELY TO AUTHORIZED PERSONNEL

The use, disclosure, reproduction, modification, transfer or transmittal of this work for any purpose, in any form, or by any means without the prior written permission of EMS Aviation is strictly prohibited. This document does not contain technical data as defined in the International Traffic and Arms Regulations (ITAR) 22 CFR 120-130.

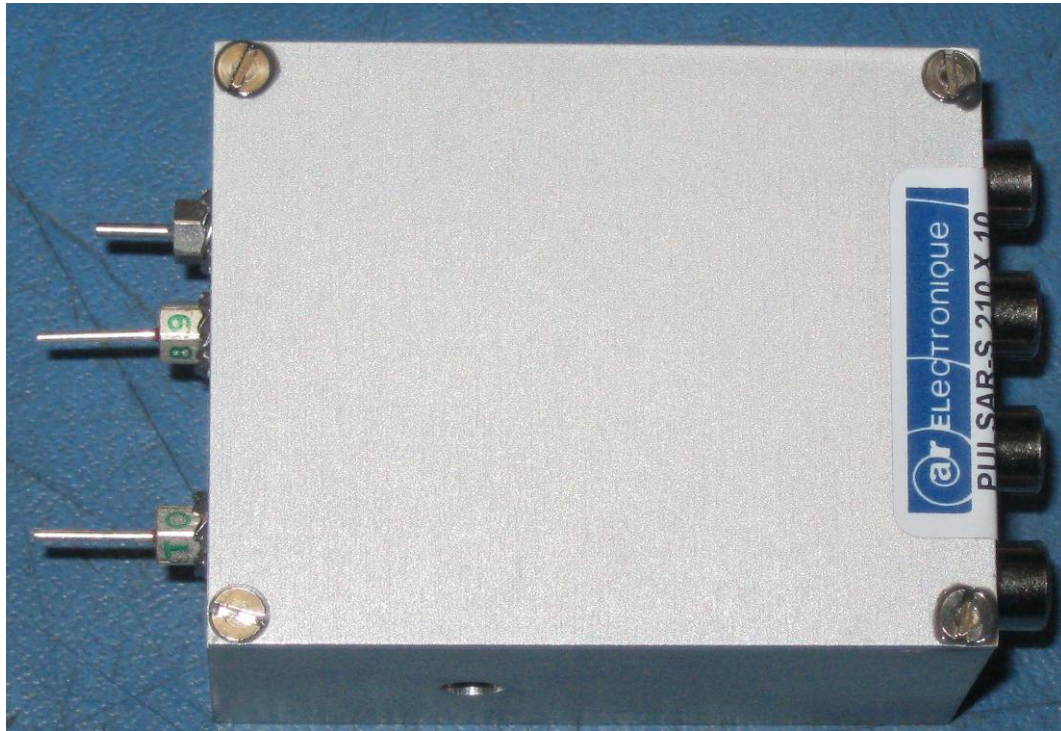


Figure 11: 1394-F-1117 OXCO Top

CONFIDENTIAL, UNPUBLISHED PROPERTY OF ONE OR MORE OF THE FOLLOWING - EMS TECHNOLOGIES CANADA, LTD., FORMATION INC., SKY CONNECT LLC (COLLECTIVELY "EMS AVIATION").

USE AND DISTRIBUTION LIMITED SOLELY TO AUTHORIZED PERSONNEL

The use, disclosure, reproduction, modification, transfer or transmittal of this work for any purpose, in any form, or by any means without the prior written permission of EMS Aviation is strictly prohibited. This document does not contain technical data as defined in the International Traffic and Arms Regulations (ITAR) 22 CFR 120-130.

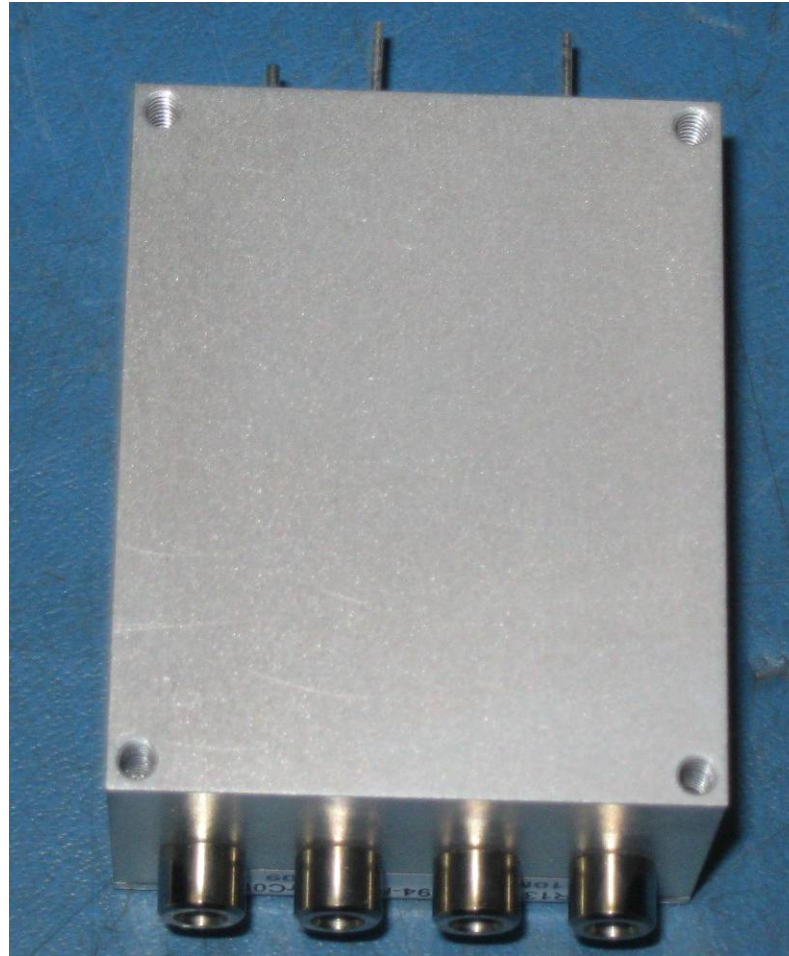


Figure 12: 1394-F-1117 OXCO Bottom

CONFIDENTIAL, UNPUBLISHED PROPERTY OF ONE OR MORE OF THE FOLLOWING - EMS TECHNOLOGIES CANADA, LTD., FORMATION INC., SKY CONNECT LLC (COLLECTIVELY “EMS AVIATION”).

USE AND DISTRIBUTION LIMITED SOLELY TO AUTHORIZED PERSONNEL

The use, disclosure, reproduction, modification, transfer or transmittal of this work for any purpose, in any form, or by any means without the prior written permission of EMS Aviation is strictly prohibited. This document does not contain technical data as defined in the International Traffic and Arms Regulations (ITAR) 22 CFR 120-130.

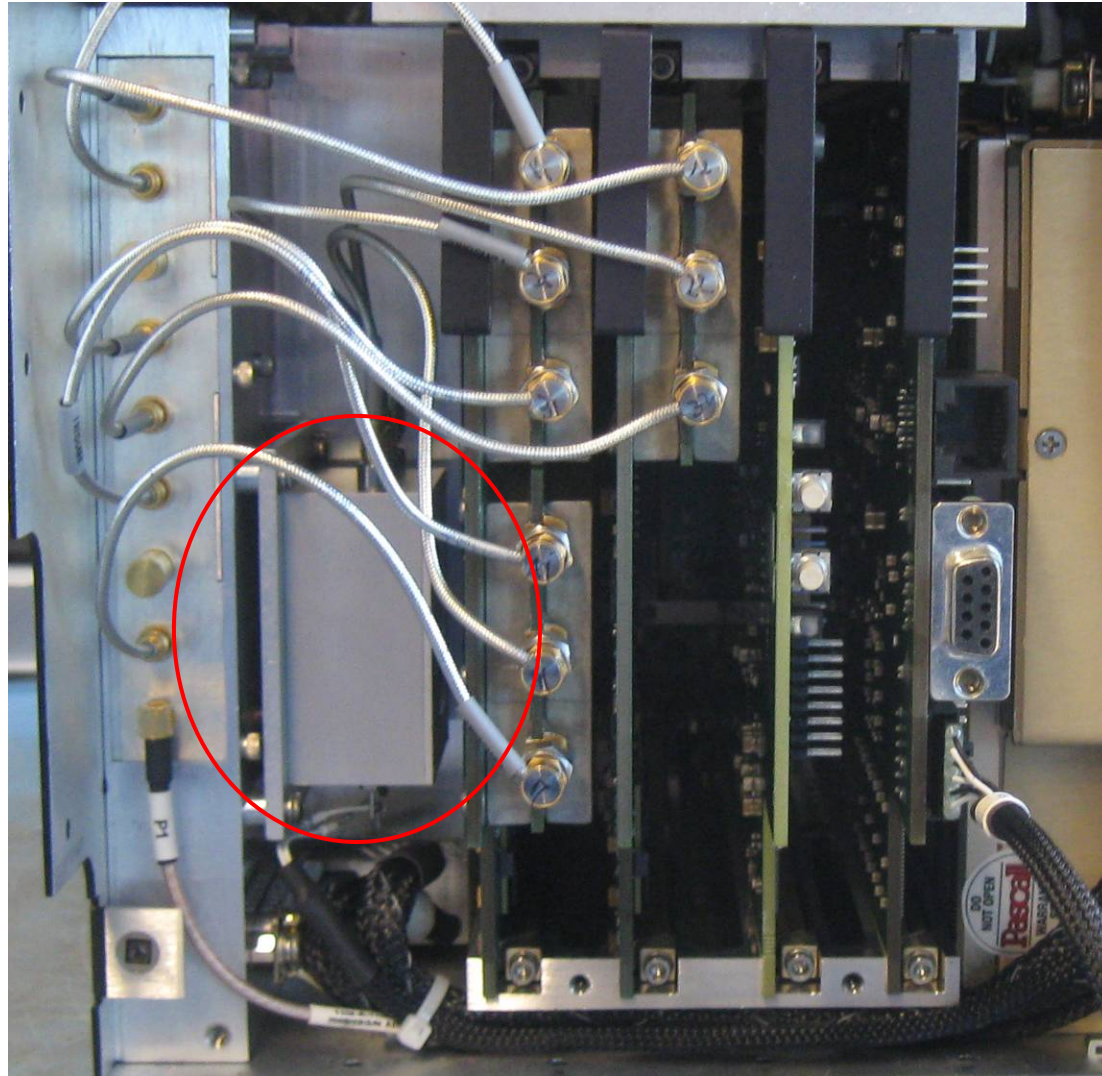


Figure 13: 1394-F-1117 OXCO Installed

CONFIDENTIAL, UNPUBLISHED PROPERTY OF ONE OR MORE OF THE FOLLOWING - EMS TECHNOLOGIES CANADA, LTD., FORMATION INC., SKY CONNECT LLC (COLLECTIVELY “EMS AVIATION”).

USE AND DISTRIBUTION LIMITED SOLELY TO AUTHORIZED PERSONNEL

The use, disclosure, reproduction, modification, transfer or transmittal of this work for any purpose, in any form, or by any means without the prior written permission of EMS Aviation is strictly prohibited. This document does not contain technical data as defined in the International Traffic and Arms Regulations (ITAR) 22 CFR 120-130.



Figure 14: 1394-F-1141 SDU Power Supply Top

CONFIDENTIAL, UNPUBLISHED PROPERTY OF ONE OR MORE OF THE FOLLOWING - EMS TECHNOLOGIES CANADA, LTD., FORMATION INC., SKY CONNECT LLC (COLLECTIVELY “EMS AVIATION”).

USE AND DISTRIBUTION LIMITED SOLELY TO AUTHORIZED PERSONNEL

The use, disclosure, reproduction, modification, transfer or transmittal of this work for any purpose, in any form, or by any means without the prior written permission of EMS Aviation is strictly prohibited. This document does not contain technical data as defined in the International Traffic and Arms Regulations (ITAR) 22 CFR 120-130.



Figure 15: 1394-F-1141 SDU Power Supply Bottom

CONFIDENTIAL, UNPUBLISHED PROPERTY OF ONE OR MORE OF THE FOLLOWING - EMS TECHNOLOGIES CANADA, LTD., FORMATION INC., SKY CONNECT LLC (COLLECTIVELY "EMS AVIATION").

USE AND DISTRIBUTION LIMITED SOLELY TO AUTHORIZED PERSONNEL

The use, disclosure, reproduction, modification, transfer or transmittal of this work for any purpose, in any form, or by any means without the prior written permission of EMS Aviation is strictly prohibited. This document does not contain technical data as defined in the International Traffic and Arms Regulations (ITAR) 22 CFR 120-130.



Figure 16: 1394-F-1140 SDU Power Amplifier Top

CONFIDENTIAL, UNPUBLISHED PROPERTY OF ONE OR MORE OF THE FOLLOWING - EMS TECHNOLOGIES CANADA, LTD., FORMATION INC., SKY CONNECT LLC (COLLECTIVELY "EMS AVIATION").

USE AND DISTRIBUTION LIMITED SOLELY TO AUTHORIZED PERSONNEL

The use, disclosure, reproduction, modification, transfer or transmittal of this work for any purpose, in any form, or by any means without the prior written permission of EMS Aviation is strictly prohibited. This document does not contain technical data as defined in the International Traffic and Arms Regulations (ITAR) 22 CFR 120-130.



Figure 17: 1394-F-1140 SDU Power Amplifier Bottom

CONFIDENTIAL, UNPUBLISHED PROPERTY OF ONE OR MORE OF THE FOLLOWING - EMS TECHNOLOGIES CANADA, LTD., FORMATION INC., SKY CONNECT LLC (COLLECTIVELY "EMS AVIATION").

USE AND DISTRIBUTION LIMITED SOLELY TO AUTHORIZED PERSONNEL

The use, disclosure, reproduction, modification, transfer or transmittal of this work for any purpose, in any form, or by any means without the prior written permission of EMS Aviation is strictly prohibited. This document does not contain technical data as defined in the International Traffic and Arms Regulations (ITAR) 22 CFR 120-130.

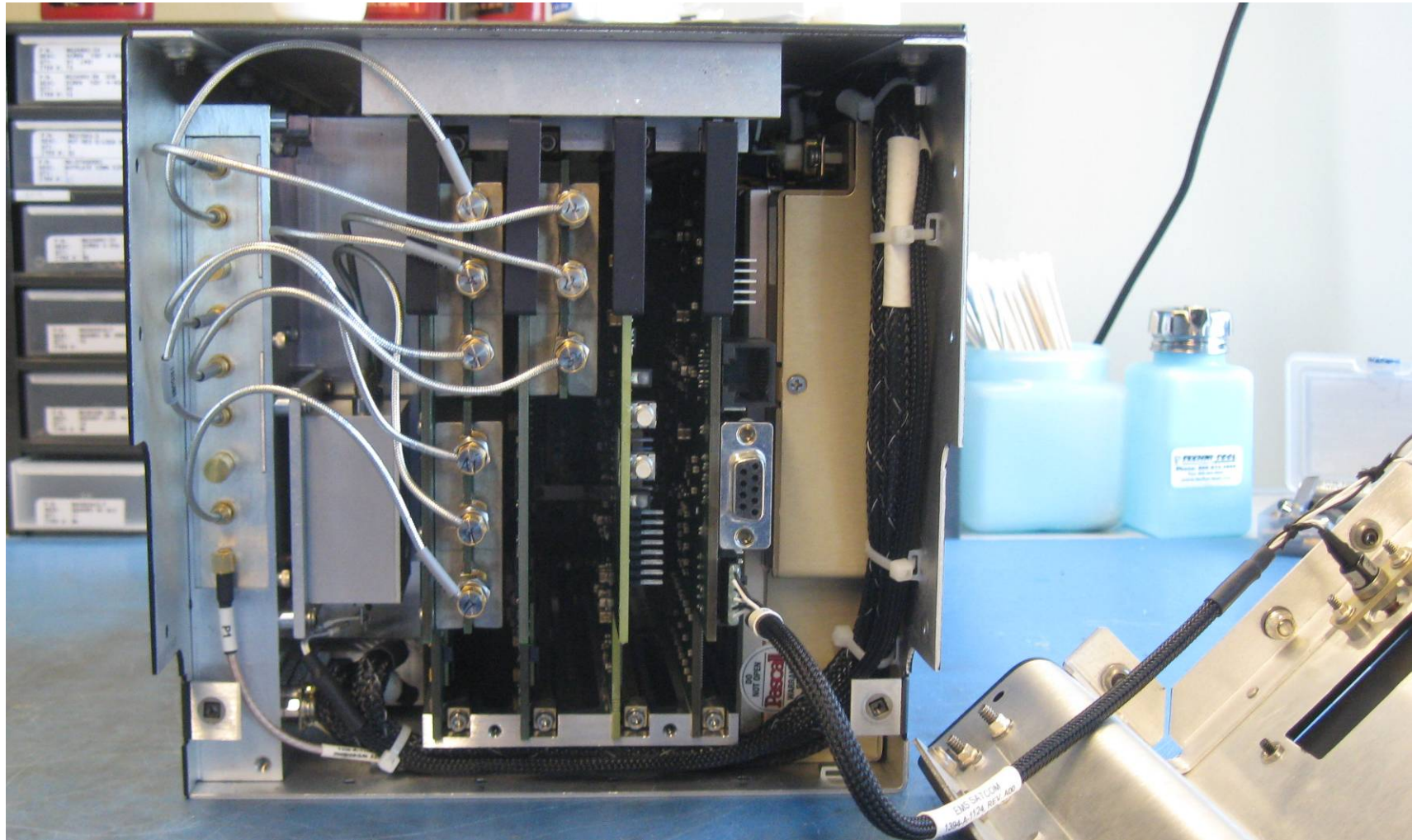


Figure 18: Interconnections

CONFIDENTIAL, UNPUBLISHED PROPERTY OF ONE OR MORE OF THE FOLLOWING - EMS TECHNOLOGIES CANADA, LTD., FORMATION INC., SKY CONNECT LLC (COLLECTIVELY “EMS AVIATION”).

USE AND DISTRIBUTION LIMITED SOLELY TO AUTHORIZED PERSONNEL

The use, disclosure, reproduction, modification, transfer or transmittal of this work for any purpose, in any form, or by any means without the prior written permission of EMS Aviation is strictly prohibited. This document does not contain technical data as defined in the International Traffic and Arms Regulations (ITAR) 22 CFR 120-130.