

LIST OF FIGURES

FIGURE 1: 1530-A-1103 CONTROL PROCESSOR TOP	2
FIGURE 2: 1530-A-1103 CONTROL PROCESSOR BOTTOM.....	3
FIGURE 3: 1210-A-2010 DABC CHANNEL CARD TOP.....	4
FIGURE 4: 1210-A-2010 DABC CHANNEL CARD TOP WITHOUT HEAT SINK	5
FIGURE 5: 1210-A-2010 DABC CHANNEL CARD BOTTOM	6
FIGURE 6: 1210-A-0010-01 BGAN 1 CHANNEL CARD TOP	7
FIGURE 7: 1210-A-0010-01 BGAN 1 CHANNEL CARD BOTTOM	8
FIGURE 8: 1210-A-0002-01 HSD DIGITAL MODULE TOP (PART OF THE BGAN 1 CHANNEL CARDS).....	9
FIGURE 9: 1210-A-0002-01 HSD DIGITAL MODULE BOTTOM (PART OF THE BGAN 1 CHANNEL CARDS)	10
FIGURE 10: 1210-A-0003 RF MODULE TOP (PART OF THE BGAN 1 CHANNEL CARDS)	11
FIGURE 11: 1210-A-0003 RF MODULE BOTTOM (PART OF THE BGAN 1 CHANNEL CARDS).....	11
FIGURE 12: 1394-F-1117 OXCO TOP.....	12
FIGURE 13: 1394-F-1117 OXCO BOTTOM	13
FIGURE 14: 1394-F-1117 OXCO INSTALLED	14
FIGURE 15: 1530-F-1106 POWER SUPPLY TOP	15
FIGURE 16: 1530-F-1106 POWER SUPPLY BOTTOM.....	16
FIGURE 17: 1530-F-1140 POWER AMPLIFIER TOP	17
FIGURE 18: 1530-F-1140 POWER AMPLIFIER BOTTOM.....	18
FIGURE 19: INTERCONNECTIONS.....	19

CONFIDENTIAL, UNPUBLISHED PROPERTY OF ONE OR MORE OF THE FOLLOWING - EMS TECHNOLOGIES CANADA, LTD., FORMATION INC., SKY CONNECT LLC (COLLECTIVELY “EMS AVIATION”).

USE AND DISTRIBUTION LIMITED SOLELY TO AUTHORIZED PERSONNEL

The use, disclosure, reproduction, modification, transfer or transmittal of this work for any purpose, in any form, or by any means without the prior written permission of EMS Aviation is strictly prohibited. This document does not contain technical data as defined in the International Traffic and Arms Regulations (ITAR) 22 CFR 120-130.

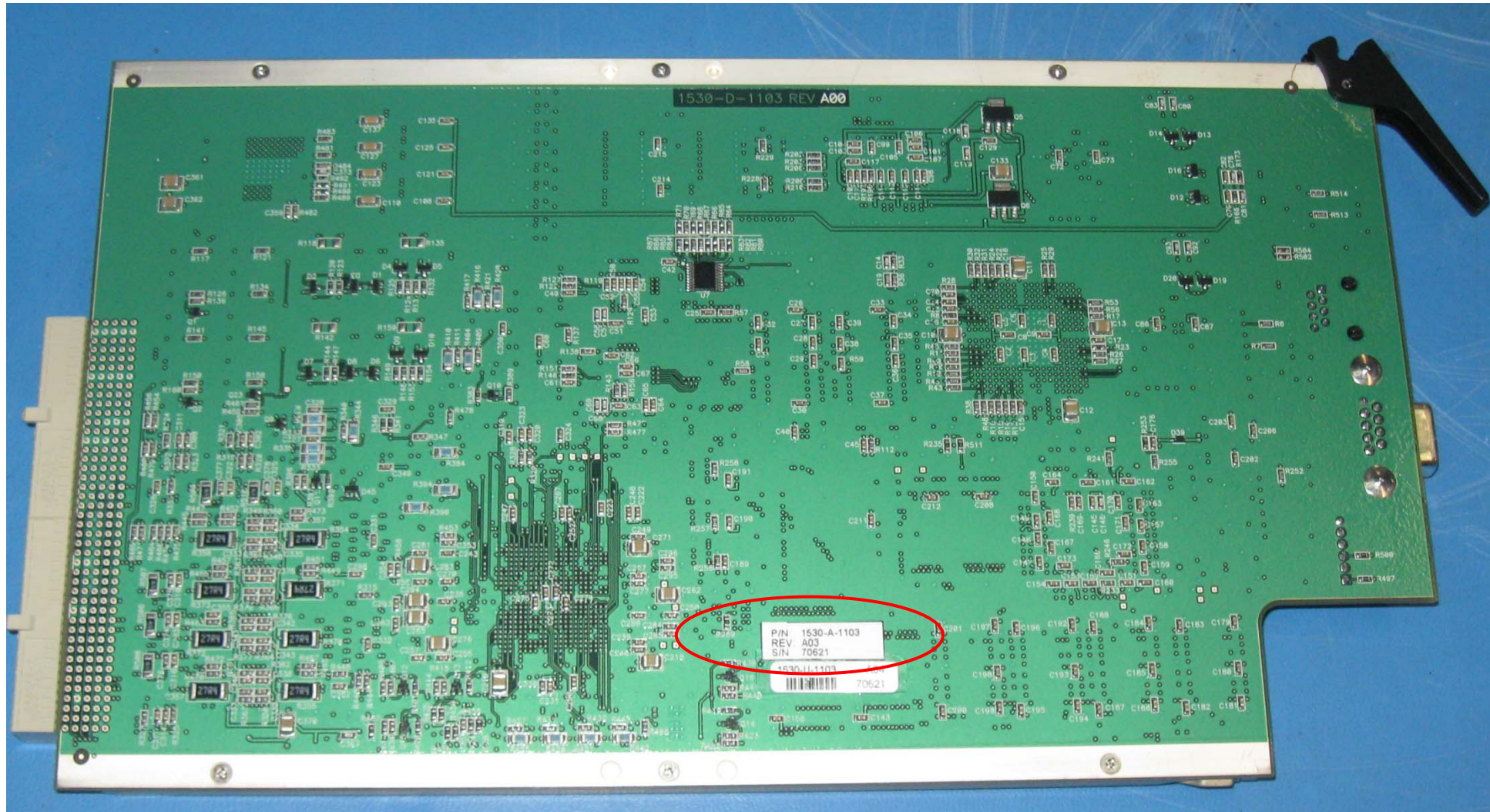


Figure 2: 1530-A-1103 Control Processor Bottom

CONFIDENTIAL, UNPUBLISHED PROPERTY OF ONE OR MORE OF THE FOLLOWING - EMS TECHNOLOGIES CANADA, LTD., FORMATION INC., SKY CONNECT LLC (COLLECTIVELY "EMS AVIATION").

USE AND DISTRIBUTION LIMITED SOLELY TO AUTHORIZED PERSONNEL

The use, disclosure, reproduction, modification, transfer or transmittal of this work for any purpose, in any form, or by any means without the prior written permission of EMS Aviation is strictly prohibited. This document does not contain technical data as defined in the International Traffic and Arms Regulations (ITAR) 22 CFR 120-130.

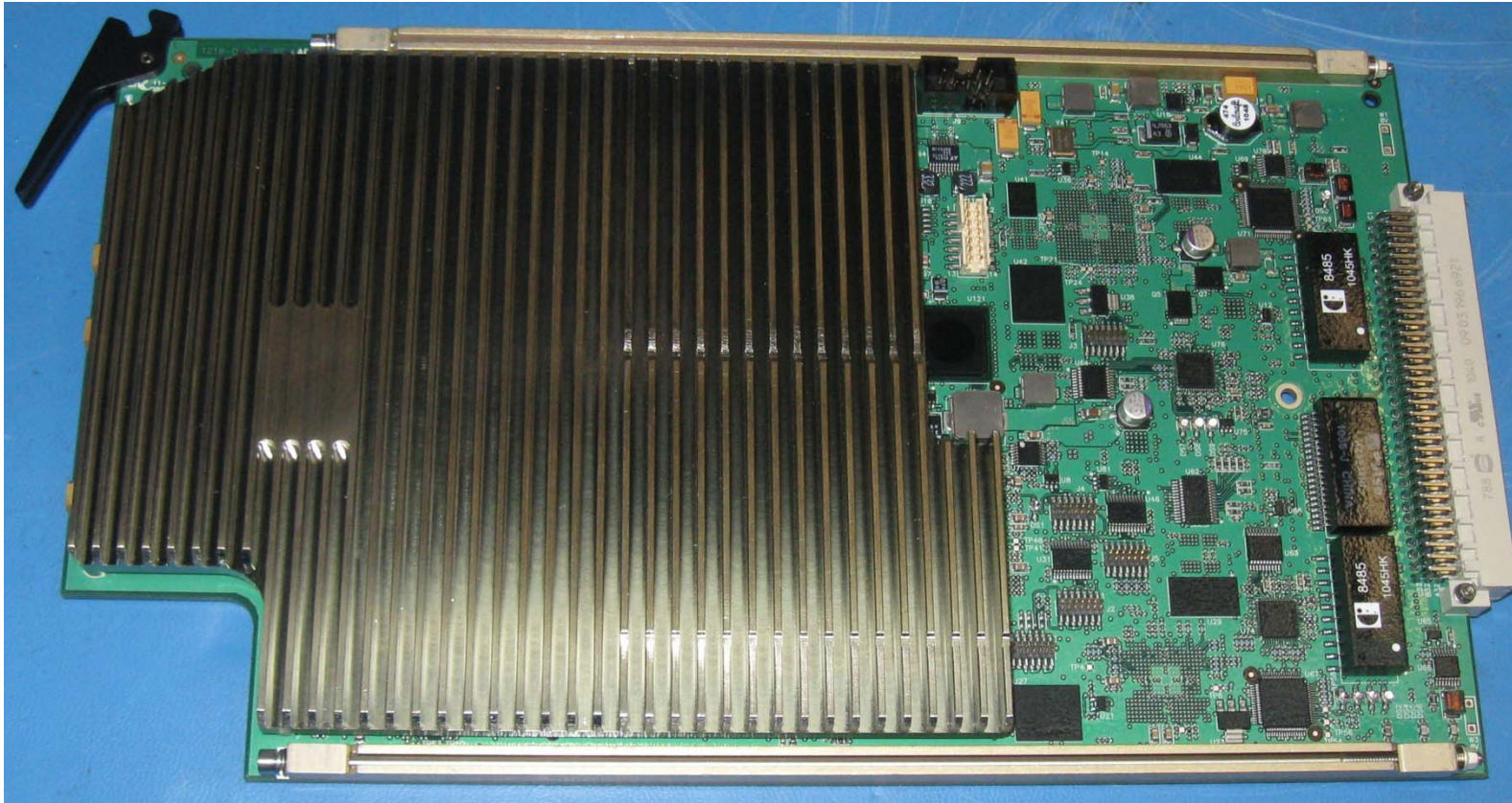


Figure 3: 1210-A-2010 DABC Channel Card Top

CONFIDENTIAL, UNPUBLISHED PROPERTY OF ONE OR MORE OF THE FOLLOWING - EMS TECHNOLOGIES CANADA, LTD., FORMATION INC., SKY CONNECT LLC (COLLECTIVELY "EMS AVIATION").

USE AND DISTRIBUTION LIMITED SOLELY TO AUTHORIZED PERSONNEL

The use, disclosure, reproduction, modification, transfer or transmittal of this work for any purpose, in any form, or by any means without the prior written permission of EMS Aviation is strictly prohibited. This document does not contain technical data as defined in the International Traffic and Arms Regulations (ITAR) 22 CFR 120-130.

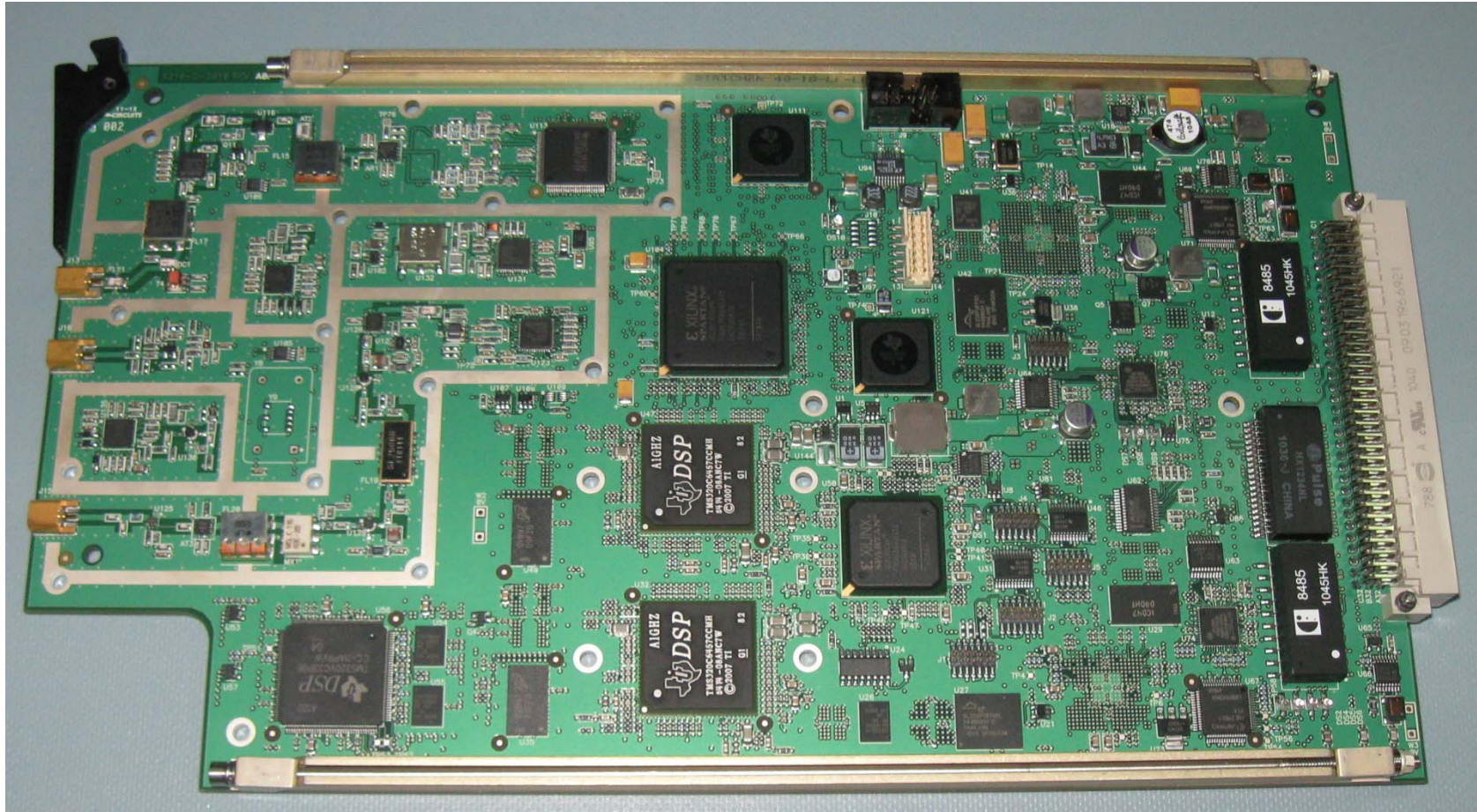


Figure 4: 1210-A-2010 DABC Channel Card Top without Heat Sink

CONFIDENTIAL, UNPUBLISHED PROPERTY OF ONE OR MORE OF THE FOLLOWING - EMS TECHNOLOGIES CANADA, LTD., FORMATION INC., SKY CONNECT LLC (COLLECTIVELY "EMS AVIATION").

USE AND DISTRIBUTION LIMITED SOLELY TO AUTHORIZED PERSONNEL

The use, disclosure, reproduction, modification, transfer or transmittal of this work for any purpose, in any form, or by any means without the prior written permission of EMS Aviation is strictly prohibited. This document does not contain technical data as defined in the International Traffic and Arms Regulations (ITAR) 22 CFR 120-130.

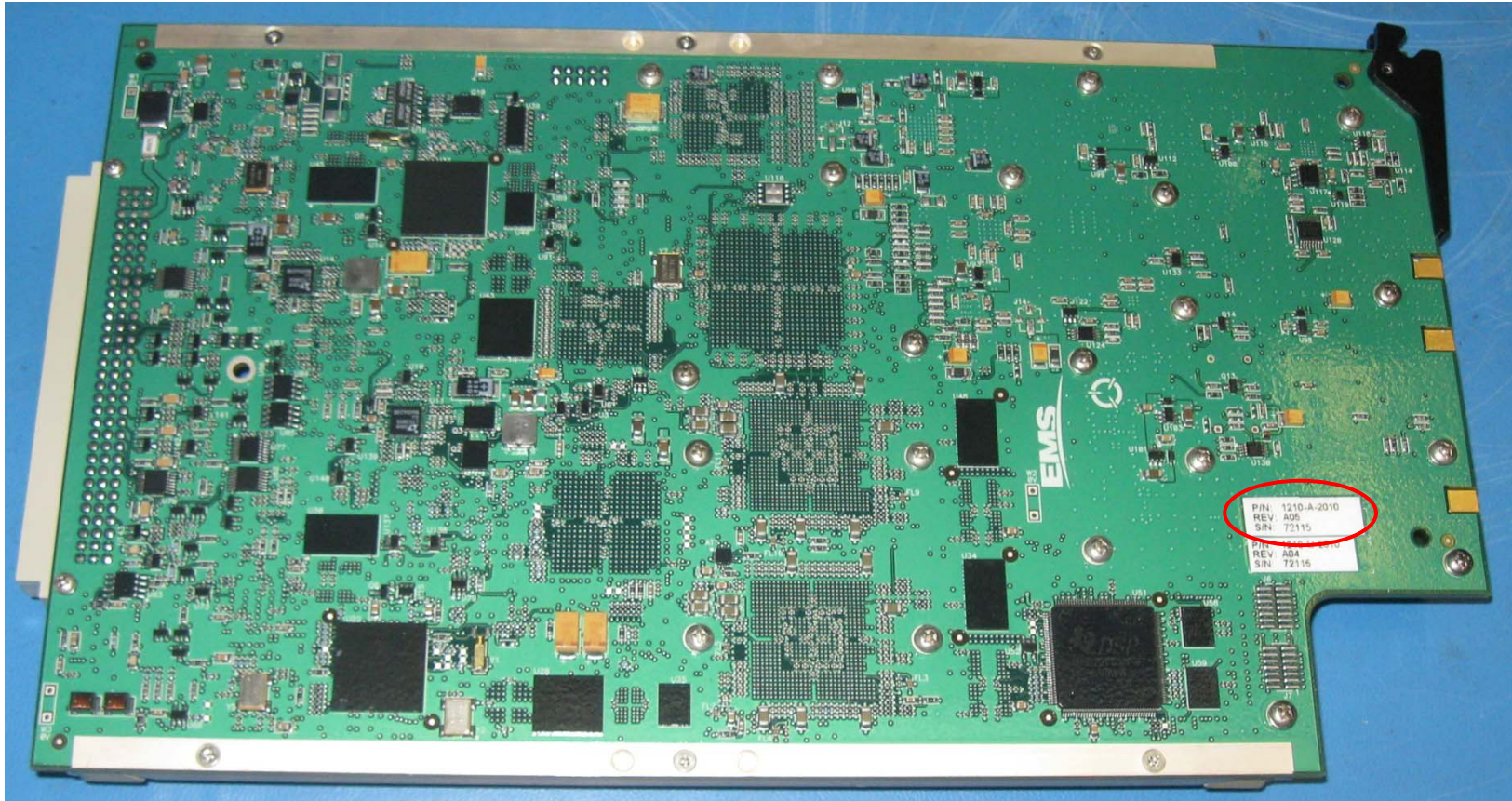


Figure 5: 1210-A-2010 DABC Channel Card Bottom

CONFIDENTIAL, UNPUBLISHED PROPERTY OF ONE OR MORE OF THE FOLLOWING - EMS TECHNOLOGIES CANADA, LTD., FORMATION INC., SKY CONNECT LLC (COLLECTIVELY "EMS AVIATION").

USE AND DISTRIBUTION LIMITED SOLELY TO AUTHORIZED PERSONNEL

The use, disclosure, reproduction, modification, transfer or transmittal of this work for any purpose, in any form, or by any means without the prior written permission of EMS Aviation is strictly prohibited. This document does not contain technical data as defined in the International Traffic and Arms Regulations (ITAR) 22 CFR 120-130.

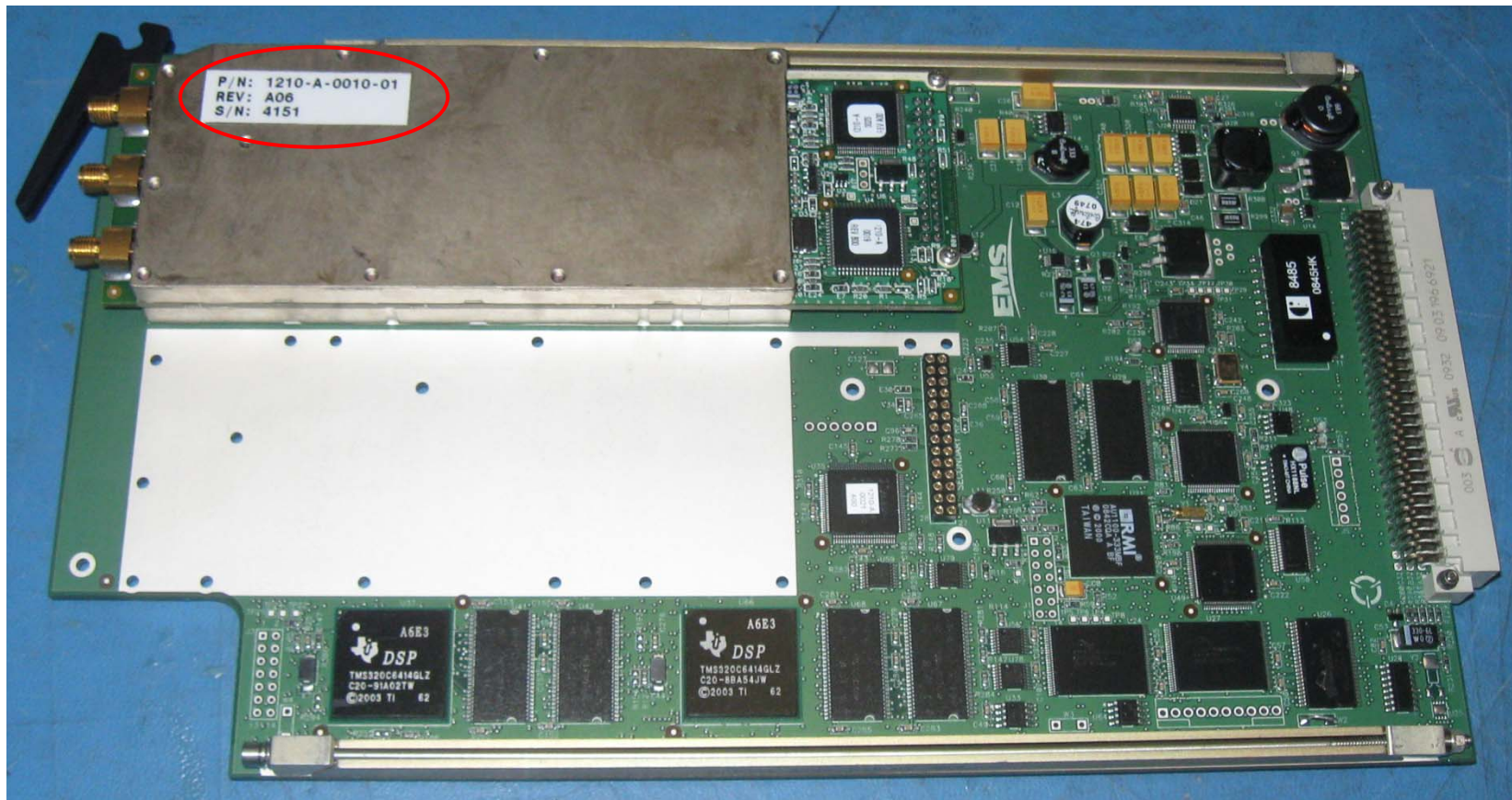


Figure 6:1210-A-0010-01 BGAN 1 Channel Card Top

CONFIDENTIAL, UNPUBLISHED PROPERTY OF ONE OR MORE OF THE FOLLOWING - EMS TECHNOLOGIES CANADA, LTD., FORMATION INC., SKY CONNECT LLC (COLLECTIVELY "EMS AVIATION").

USE AND DISTRIBUTION LIMITED SOLELY TO AUTHORIZED PERSONNEL

The use, disclosure, reproduction, modification, transfer or transmittal of this work for any purpose, in any form, or by any means without the prior written permission of EMS Aviation is strictly prohibited. This document does not contain technical data as defined in the International Traffic and Arms Regulations (ITAR) 22 CFR 120-130.

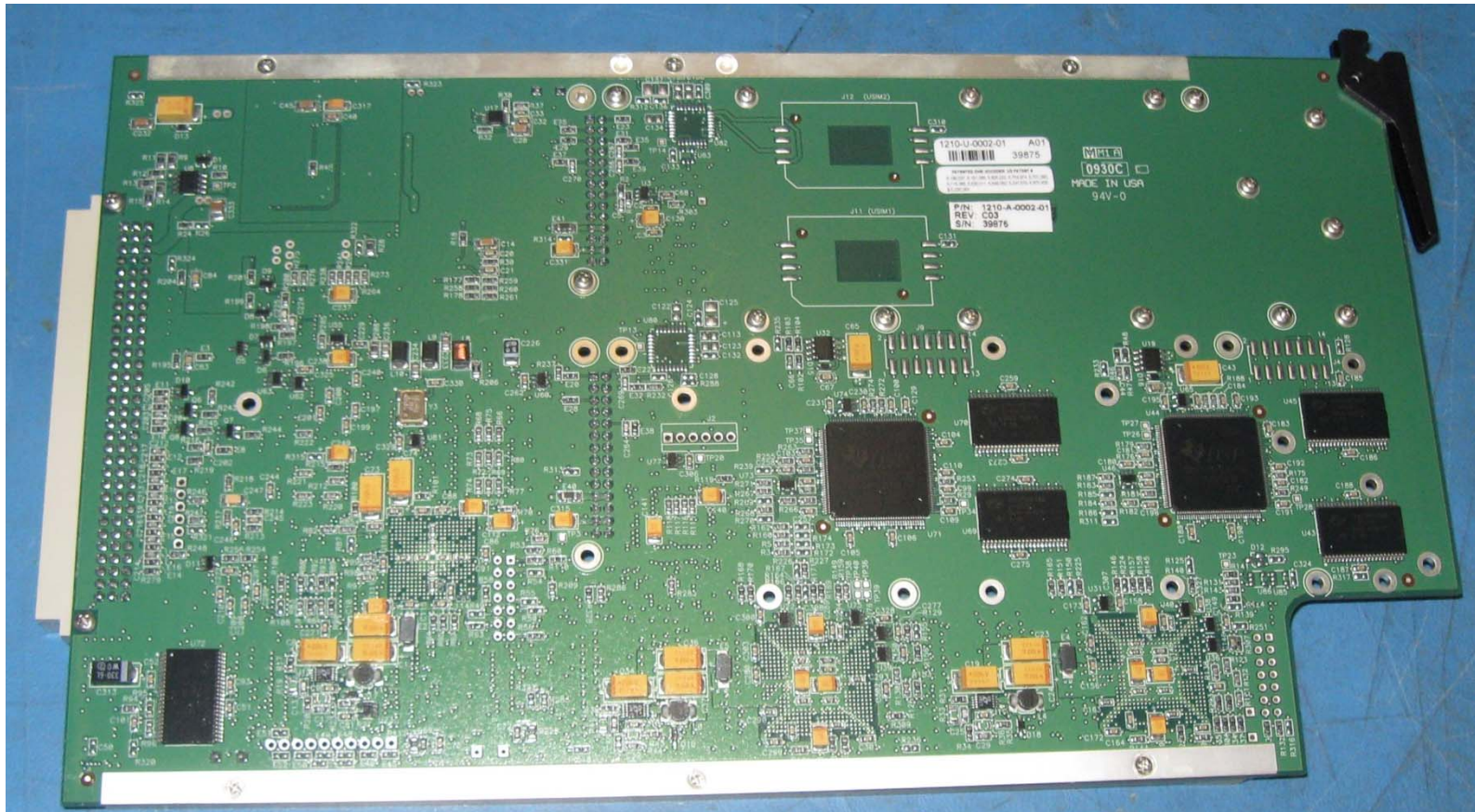


Figure 7: 1210-A-0010-01 BGAN 1 Channel Card Bottom

CONFIDENTIAL, UNPUBLISHED PROPERTY OF ONE OR MORE OF THE FOLLOWING - EMS TECHNOLOGIES CANADA, LTD., FORMATION INC., SKY CONNECT LLC (COLLECTIVELY "EMS AVIATION").

USE AND DISTRIBUTION LIMITED SOLELY TO AUTHORIZED PERSONNEL

The use, disclosure, reproduction, modification, transfer or transmittal of this work for any purpose, in any form, or by any means without the prior written permission of EMS Aviation is strictly prohibited. This document does not contain technical data as defined in the International Traffic and Arms Regulations (ITAR) 22 CFR 120-130.

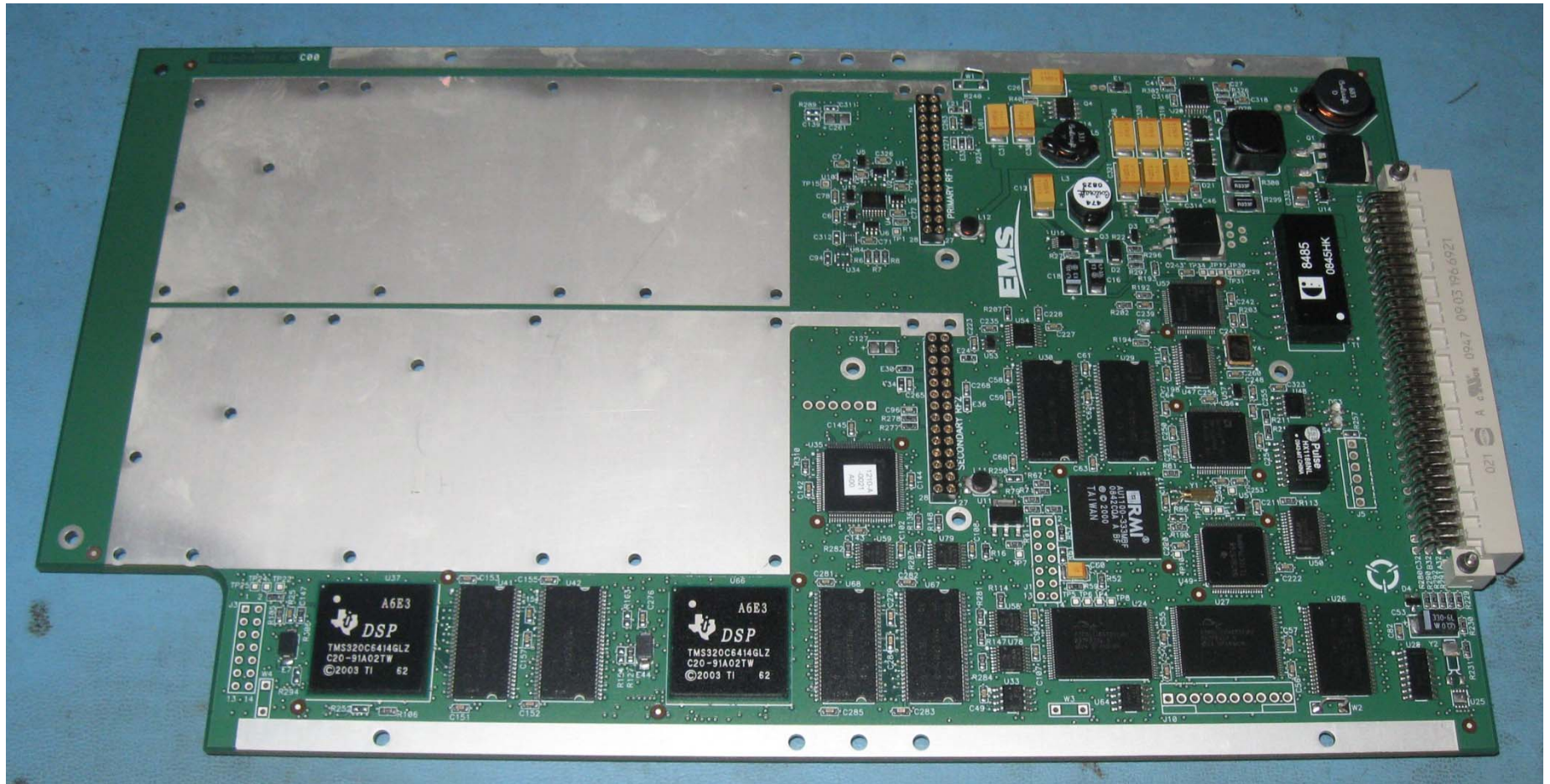


Figure 8: 1210-A-0002-01 HSD Digital Module Top (Part of the BGAN 1 Channel Cards)

CONFIDENTIAL, UNPUBLISHED PROPERTY OF ONE OR MORE OF THE FOLLOWING - EMS TECHNOLOGIES CANADA, LTD., FORMATION INC., SKY CONNECT LLC (COLLECTIVELY "EMS AVIATION").

USE AND DISTRIBUTION LIMITED SOLELY TO AUTHORIZED PERSONNEL

The use, disclosure, reproduction, modification, transfer or transmittal of this work for any purpose, in any form, or by any means without the prior written permission of EMS Aviation is strictly prohibited. This document does not contain technical data as defined in the International Traffic and Arms Regulations (ITAR) 22 CFR 120-130.

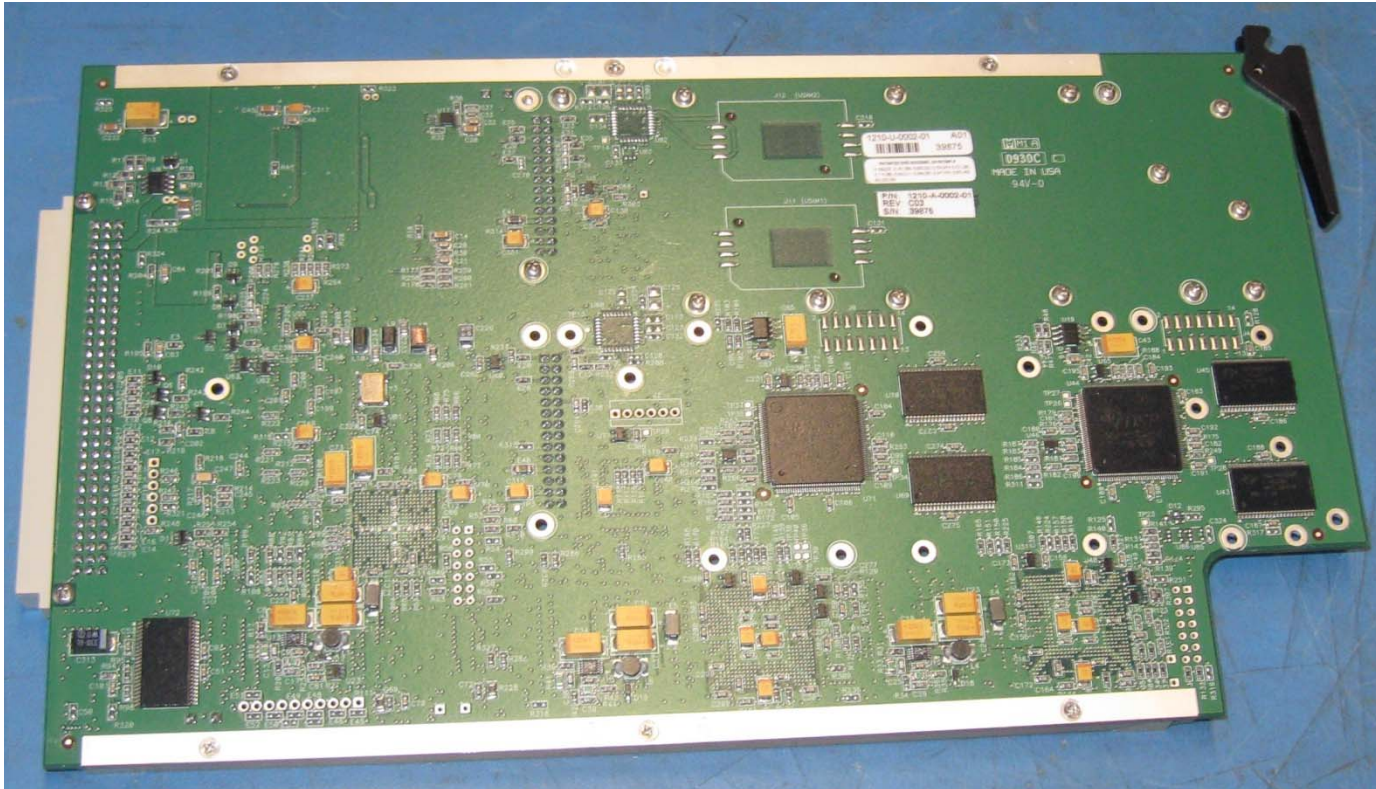


Figure 9: 1210-A-0002-01 HSD Digital Module Bottom (Part of the BGAN 1 Channel Cards)

CONFIDENTIAL, UNPUBLISHED PROPERTY OF ONE OR MORE OF THE FOLLOWING - EMS TECHNOLOGIES CANADA, LTD., FORMATION INC., SKY CONNECT LLC (COLLECTIVELY "EMS AVIATION").

USE AND DISTRIBUTION LIMITED SOLELY TO AUTHORIZED PERSONNEL

The use, disclosure, reproduction, modification, transfer or transmittal of this work for any purpose, in any form, or by any means without the prior written permission of EMS Aviation is strictly prohibited. This document does not contain technical data as defined in the International Traffic and Arms Regulations (ITAR) 22 CFR 120-130.

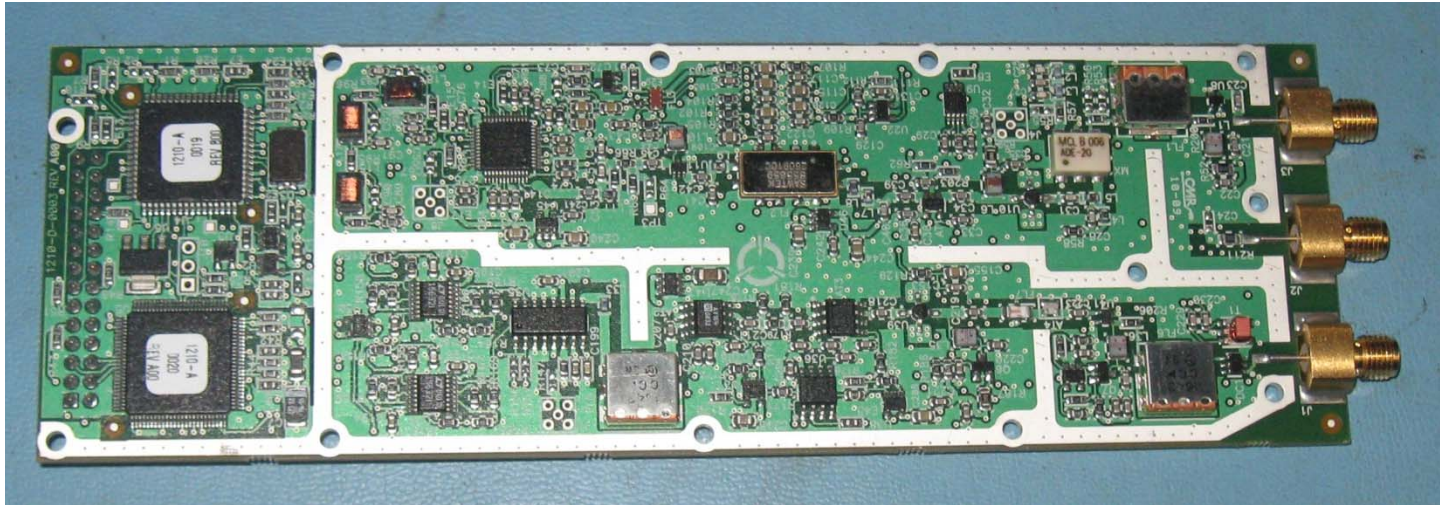


Figure 10: 1210-A-0003 RF Module Top (Part of the BGAN 1 Channel Cards)

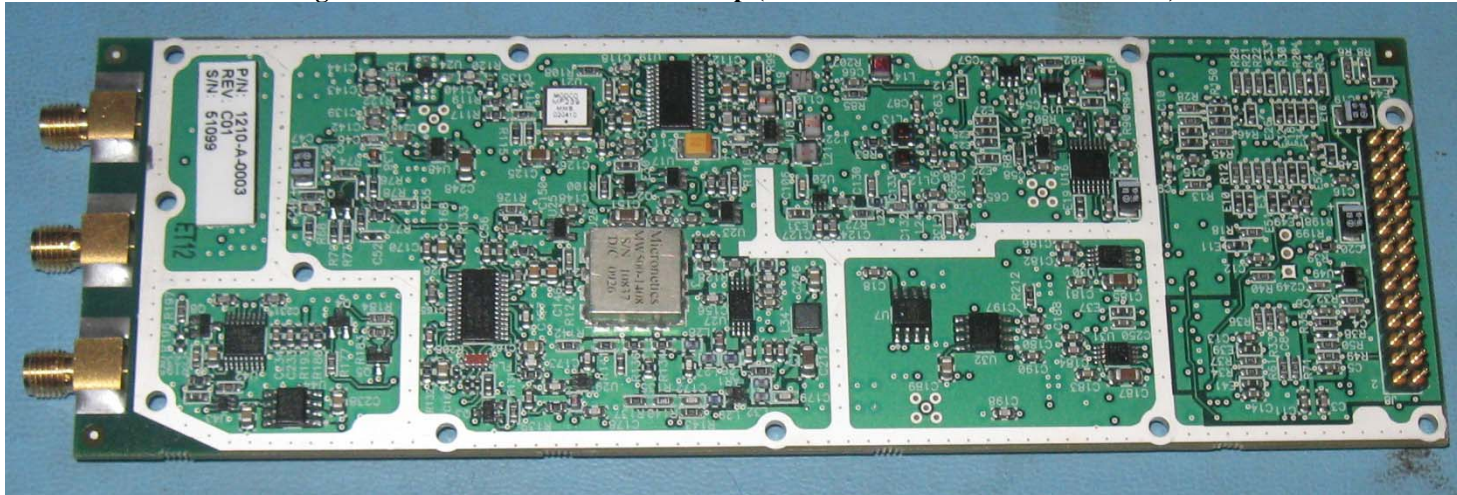


Figure 11: 1210-A-0003 RF Module Bottom (Part of the BGAN 1 Channel Cards)

CONFIDENTIAL, UNPUBLISHED PROPERTY OF ONE OR MORE OF THE FOLLOWING - EMS TECHNOLOGIES CANADA, LTD., FORMATION INC., SKY CONNECT LLC (COLLECTIVELY "EMS AVIATION").

USE AND DISTRIBUTION LIMITED SOLELY TO AUTHORIZED PERSONNEL

The use, disclosure, reproduction, modification, transfer or transmittal of this work for any purpose, in any form, or by any means without the prior written permission of EMS Aviation is strictly prohibited. This document does not contain technical data as defined in the International Traffic and Arms Regulations (ITAR) 22 CFR 120-130.

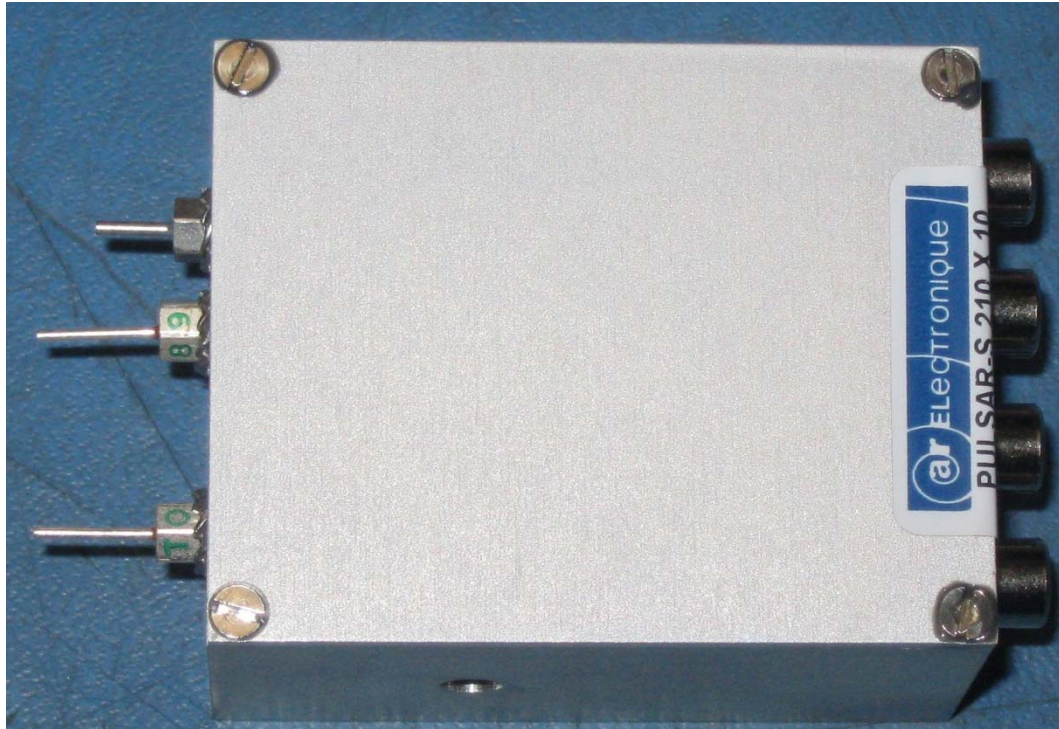


Figure 12: 1394-F-1117 OXCO Top

CONFIDENTIAL, UNPUBLISHED PROPERTY OF ONE OR MORE OF THE FOLLOWING - EMS TECHNOLOGIES CANADA, LTD., FORMATION INC., SKY CONNECT LLC (COLLECTIVELY "EMS AVIATION").

USE AND DISTRIBUTION LIMITED SOLELY TO AUTHORIZED PERSONNEL

The use, disclosure, reproduction, modification, transfer or transmittal of this work for any purpose, in any form, or by any means without the prior written permission of EMS Aviation is strictly prohibited. This document does not contain technical data as defined in the International Traffic and Arms Regulations (ITAR) 22 CFR 120-130.

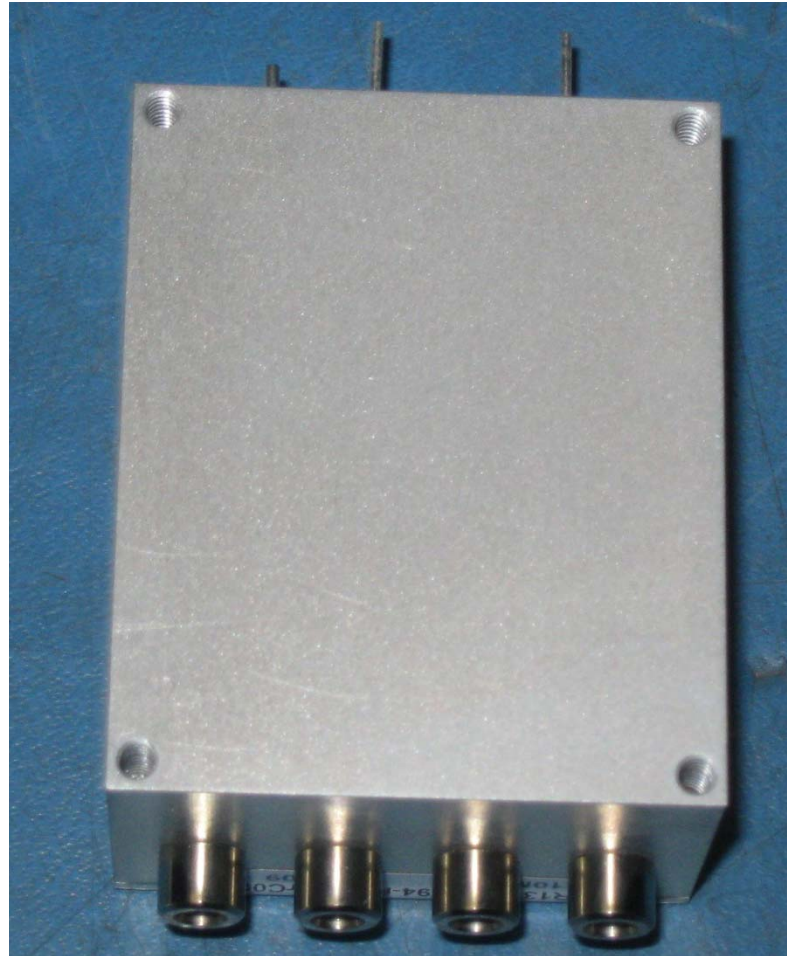


Figure 13: 1394-F-1117 OXCO Bottom

CONFIDENTIAL, UNPUBLISHED PROPERTY OF ONE OR MORE OF THE FOLLOWING - EMS TECHNOLOGIES CANADA, LTD., FORMATION INC., SKY CONNECT LLC (COLLECTIVELY "EMS AVIATION").

USE AND DISTRIBUTION LIMITED SOLELY TO AUTHORIZED PERSONNEL

The use, disclosure, reproduction, modification, transfer or transmittal of this work for any purpose, in any form, or by any means without the prior written permission of EMS Aviation is strictly prohibited. This document does not contain technical data as defined in the International Traffic and Arms Regulations (ITAR) 22 CFR 120-130.

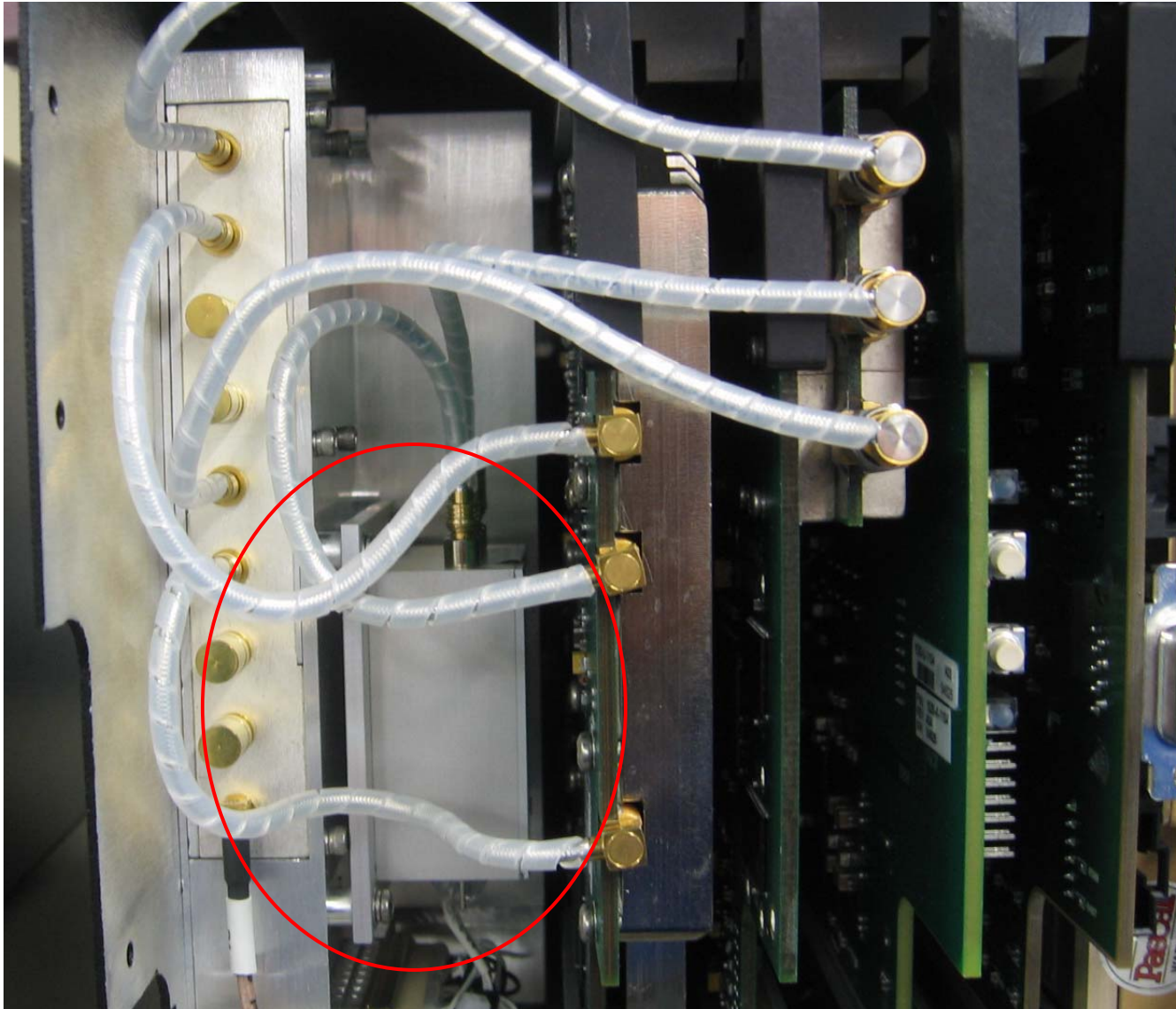


Figure 14: 1394-F-1117 OXCO Installed

CONFIDENTIAL, UNPUBLISHED PROPERTY OF ONE OR MORE OF THE FOLLOWING - EMS TECHNOLOGIES CANADA, LTD., FORMATION INC., SKY CONNECT LLC (COLLECTIVELY "EMS AVIATION").

USE AND DISTRIBUTION LIMITED SOLELY TO AUTHORIZED PERSONNEL

The use, disclosure, reproduction, modification, transfer or transmittal of this work for any purpose, in any form, or by any means without the prior written permission of EMS Aviation is strictly prohibited. This document does not contain technical data as defined in the International Traffic and Arms Regulations (ITAR) 22 CFR 120-130.



Figure 15: 1530-F-1106 Power Supply Top

CONFIDENTIAL, UNPUBLISHED PROPERTY OF ONE OR MORE OF THE FOLLOWING - EMS TECHNOLOGIES CANADA, LTD., FORMATION INC., SKY CONNECT LLC (COLLECTIVELY “EMS AVIATION”).

USE AND DISTRIBUTION LIMITED SOLELY TO AUTHORIZED PERSONNEL

The use, disclosure, reproduction, modification, transfer or transmittal of this work for any purpose, in any form, or by any means without the prior written permission of EMS Aviation is strictly prohibited. This document does not contain technical data as defined in the International Traffic and Arms Regulations (ITAR) 22 CFR 120-130.

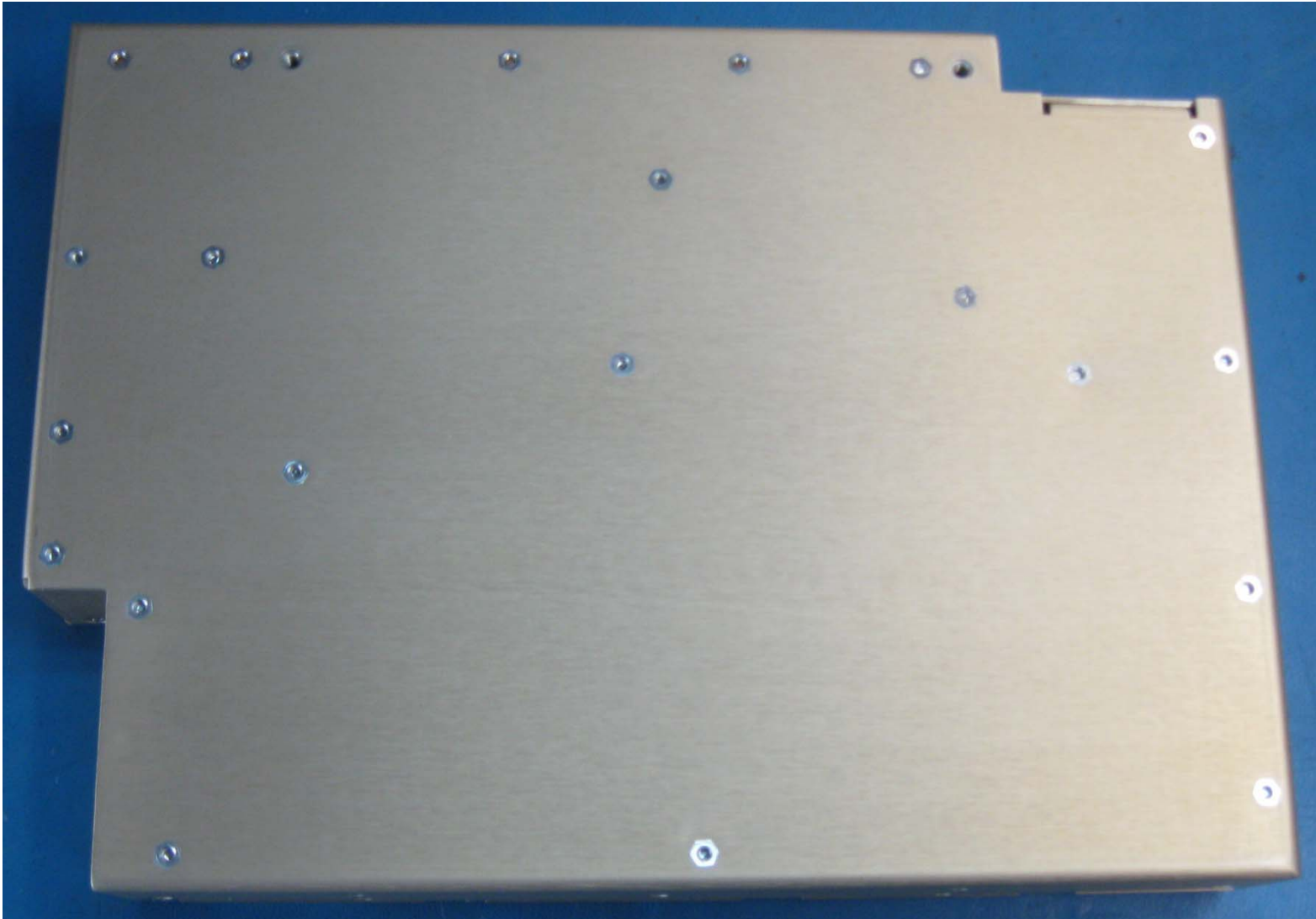


Figure 16: 1530-F-1106 Power Supply Bottom

CONFIDENTIAL, UNPUBLISHED PROPERTY OF ONE OR MORE OF THE FOLLOWING - EMS TECHNOLOGIES CANADA, LTD., FORMATION INC., SKY CONNECT LLC (COLLECTIVELY "EMS AVIATION").

USE AND DISTRIBUTION LIMITED SOLELY TO AUTHORIZED PERSONNEL

The use, disclosure, reproduction, modification, transfer or transmittal of this work for any purpose, in any form, or by any means without the prior written permission of EMS Aviation is strictly prohibited. This document does not contain technical data as defined in the International Traffic and Arms Regulations (ITAR) 22 CFR 120-130.



Figure 17: 1530-F-1140 Power Amplifier Top

CONFIDENTIAL, UNPUBLISHED PROPERTY OF ONE OR MORE OF THE FOLLOWING - EMS TECHNOLOGIES CANADA, LTD., FORMATION INC., SKY CONNECT LLC (COLLECTIVELY "EMS AVIATION").

USE AND DISTRIBUTION LIMITED SOLELY TO AUTHORIZED PERSONNEL

The use, disclosure, reproduction, modification, transfer or transmittal of this work for any purpose, in any form, or by any means without the prior written permission of EMS Aviation is strictly prohibited. This document does not contain technical data as defined in the International Traffic and Arms Regulations (ITAR) 22 CFR 120-130.



Figure 18: 1530-F-1140 Power Amplifier Bottom

CONFIDENTIAL, UNPUBLISHED PROPERTY OF ONE OR MORE OF THE FOLLOWING - EMS TECHNOLOGIES CANADA, LTD., FORMATION INC., SKY CONNECT LLC (COLLECTIVELY "EMS AVIATION").

USE AND DISTRIBUTION LIMITED SOLELY TO AUTHORIZED PERSONNEL

The use, disclosure, reproduction, modification, transfer or transmittal of this work for any purpose, in any form, or by any means without the prior written permission of EMS Aviation is strictly prohibited. This document does not contain technical data as defined in the International Traffic and Arms Regulations (ITAR) 22 CFR 120-130.

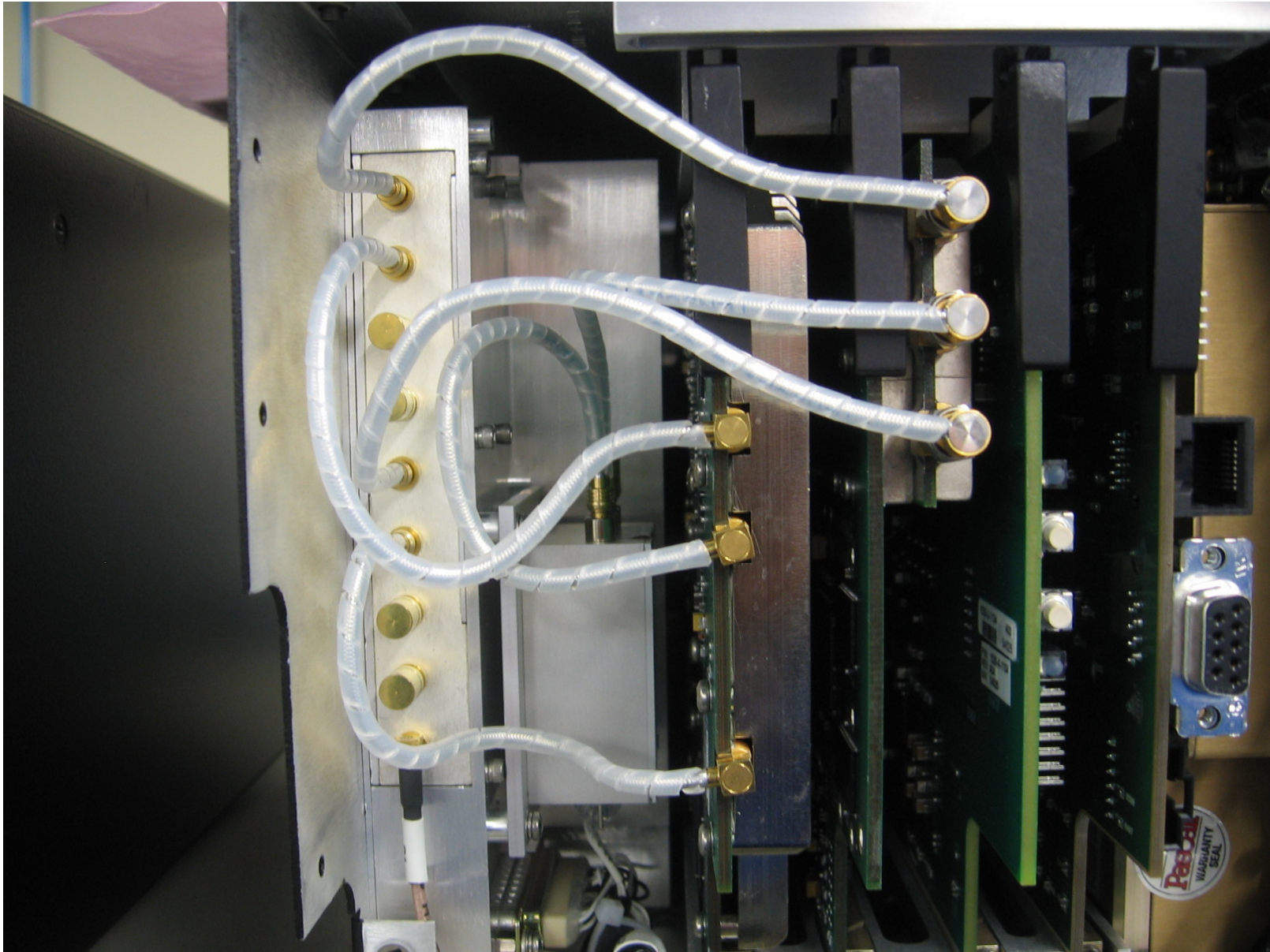


Figure 19: Interconnections

CONFIDENTIAL, UNPUBLISHED PROPERTY OF ONE OR MORE OF THE FOLLOWING - EMS TECHNOLOGIES CANADA, LTD., FORMATION INC., SKY CONNECT LLC (COLLECTIVELY "EMS AVIATION").

USE AND DISTRIBUTION LIMITED SOLELY TO AUTHORIZED PERSONNEL

The use, disclosure, reproduction, modification, transfer or transmittal of this work for any purpose, in any form, or by any means without the prior written permission of EMS Aviation is strictly prohibited. This document does not contain technical data as defined in the International Traffic and Arms Regulations (ITAR) 22 CFR 120-130.