

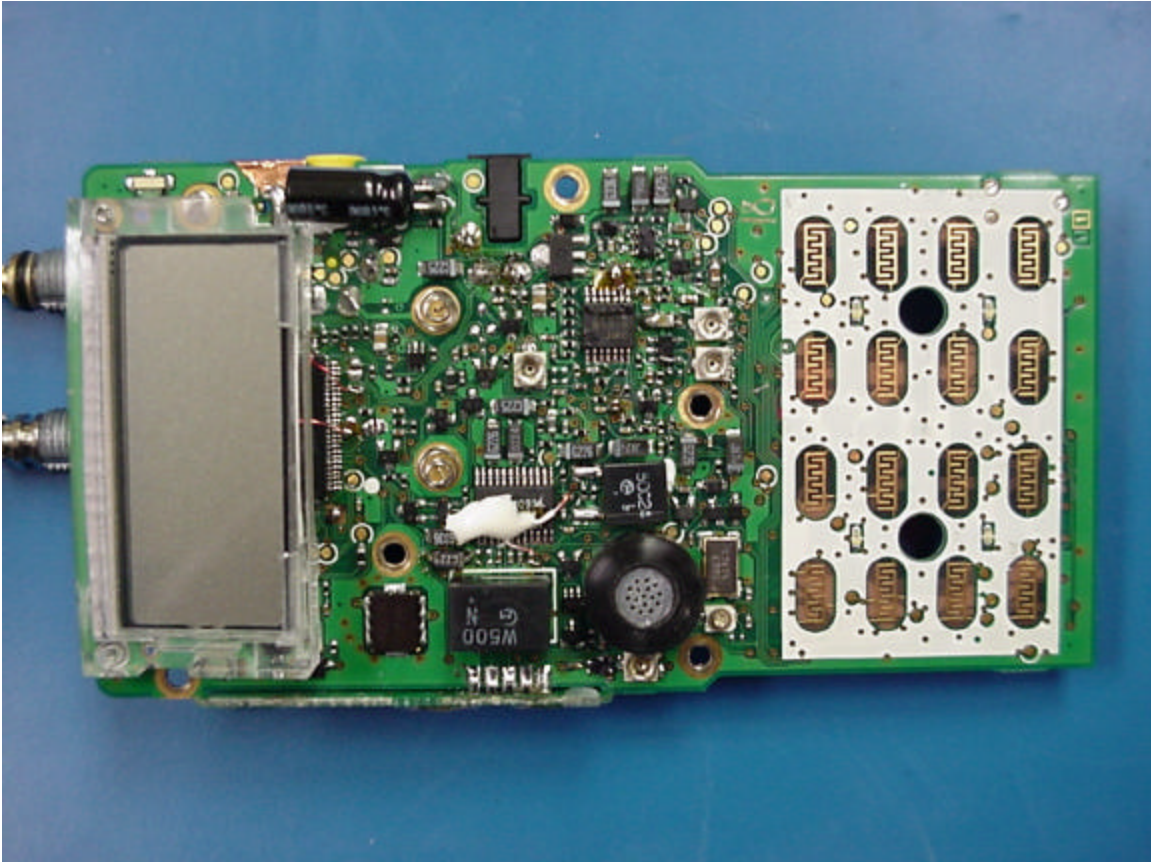
Back of EUT without Battery Pack



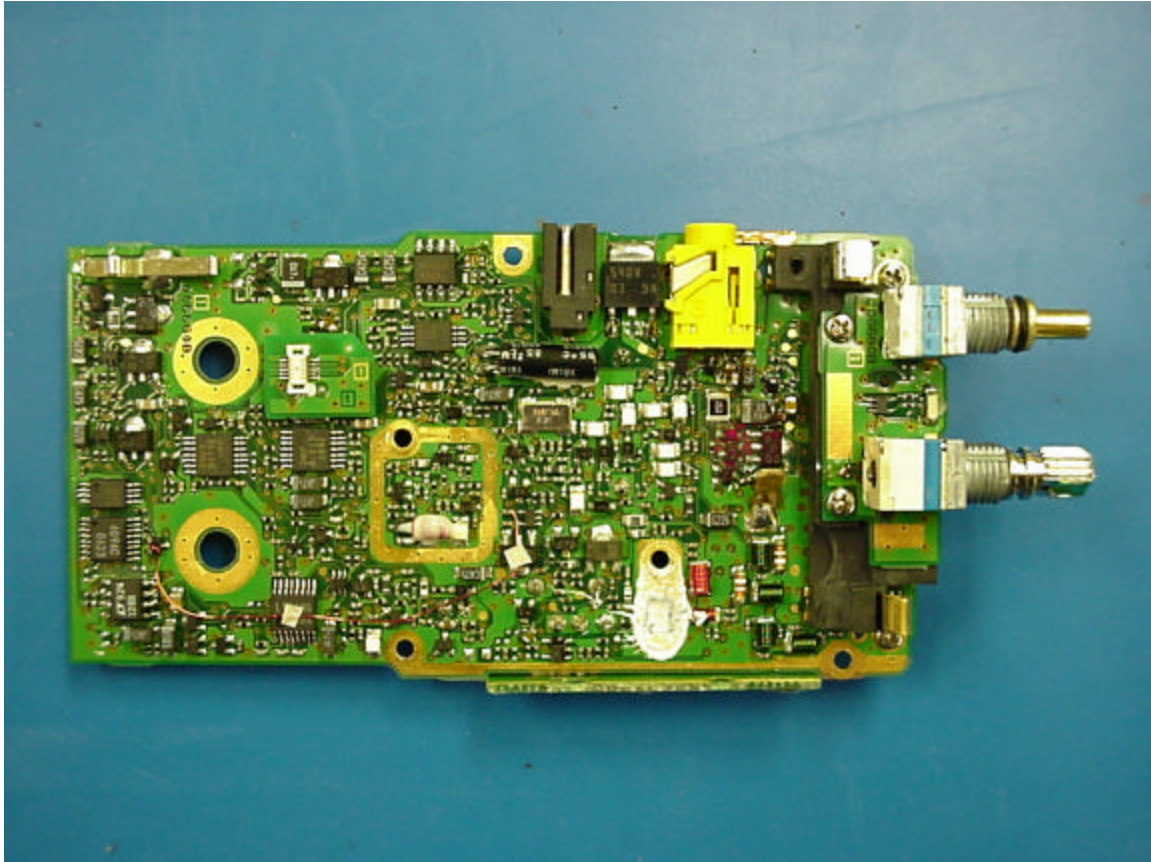
Battery Pack



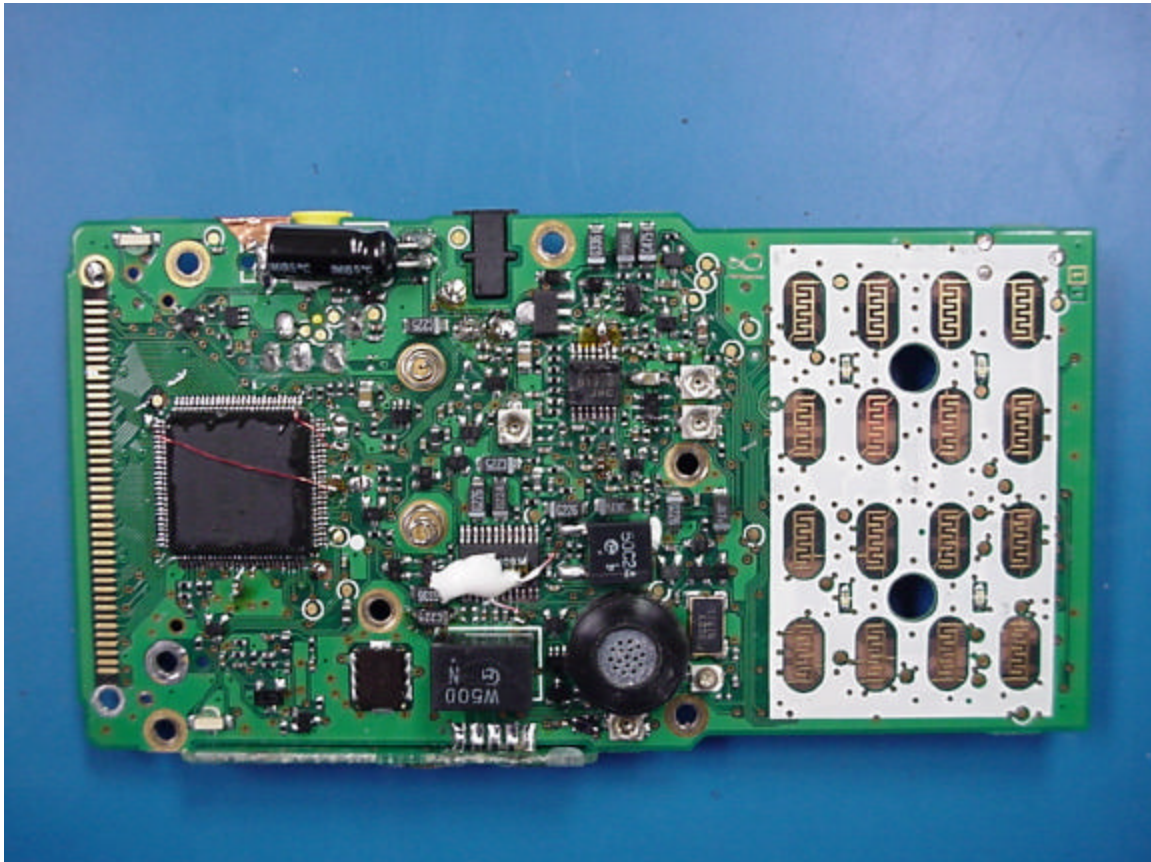
Top of PCB Board



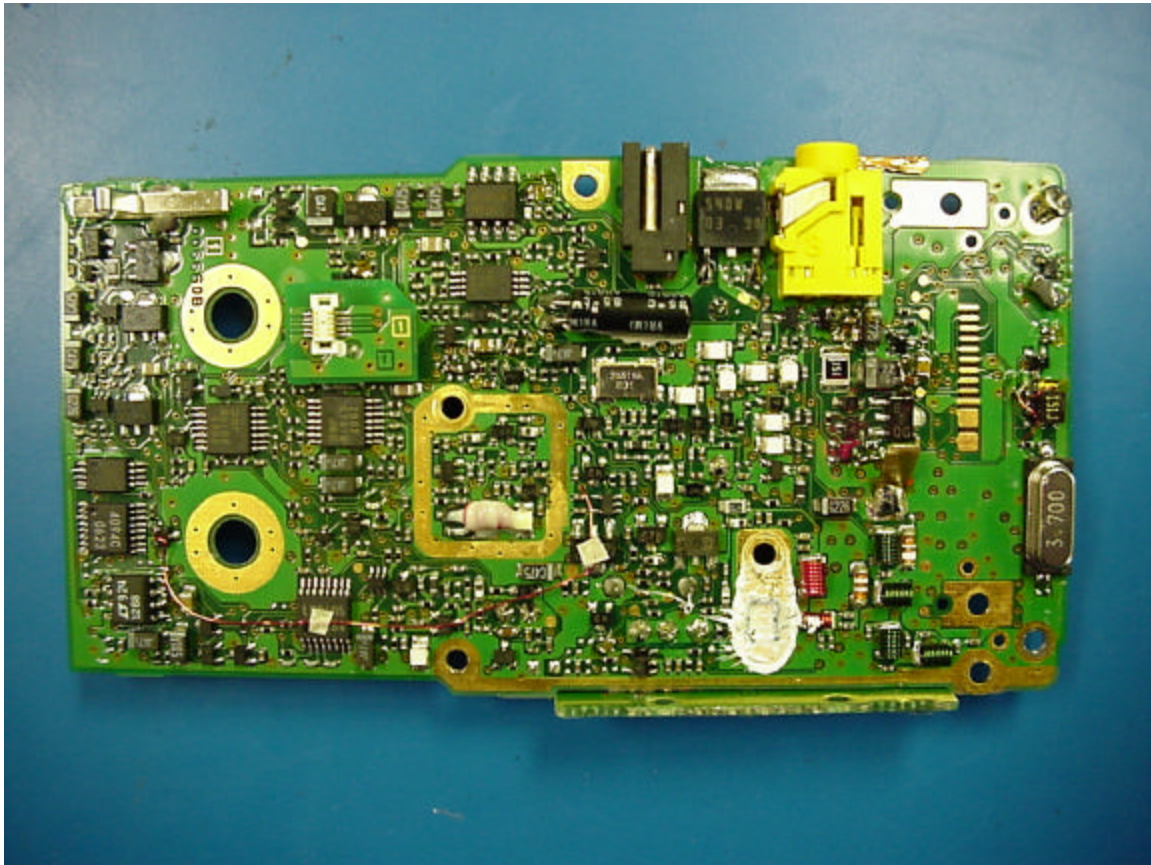
Bottom of PCB Board



Top of PCB Board without LCD



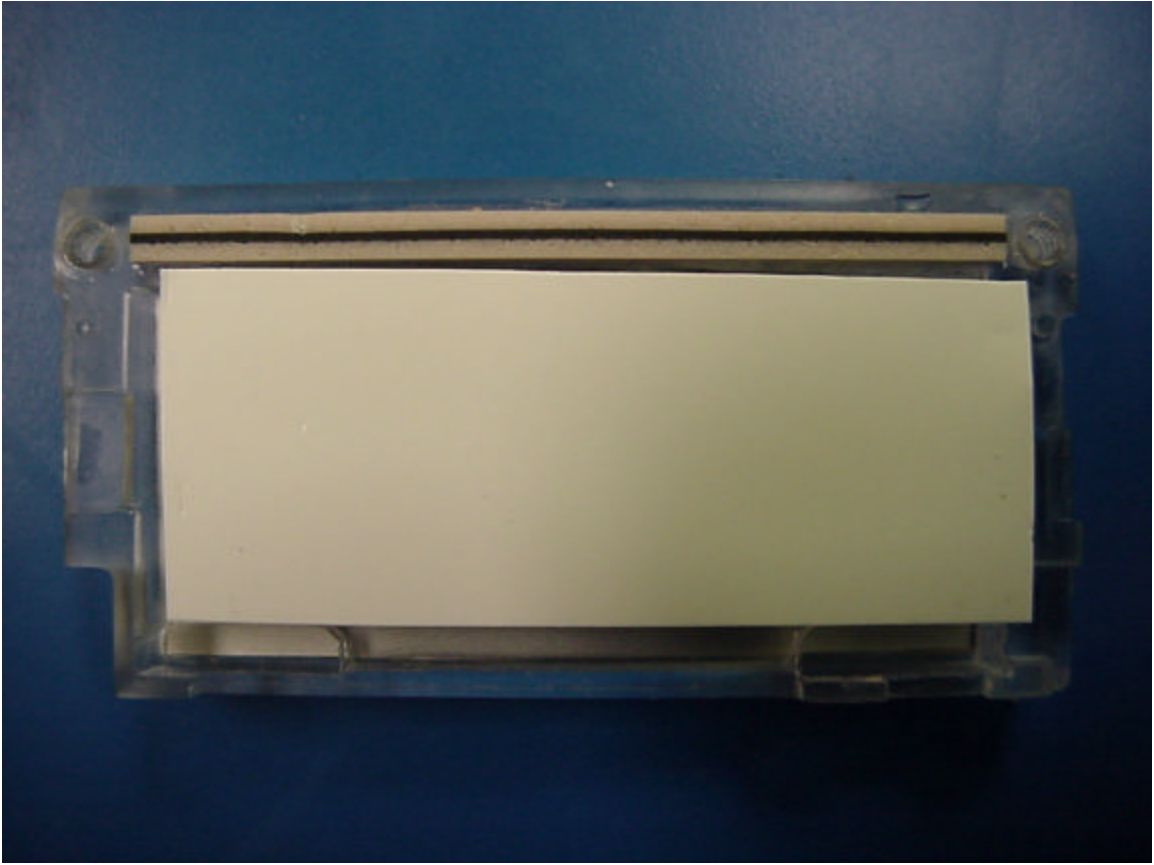
Bottom of PCB Board without Knob PCB



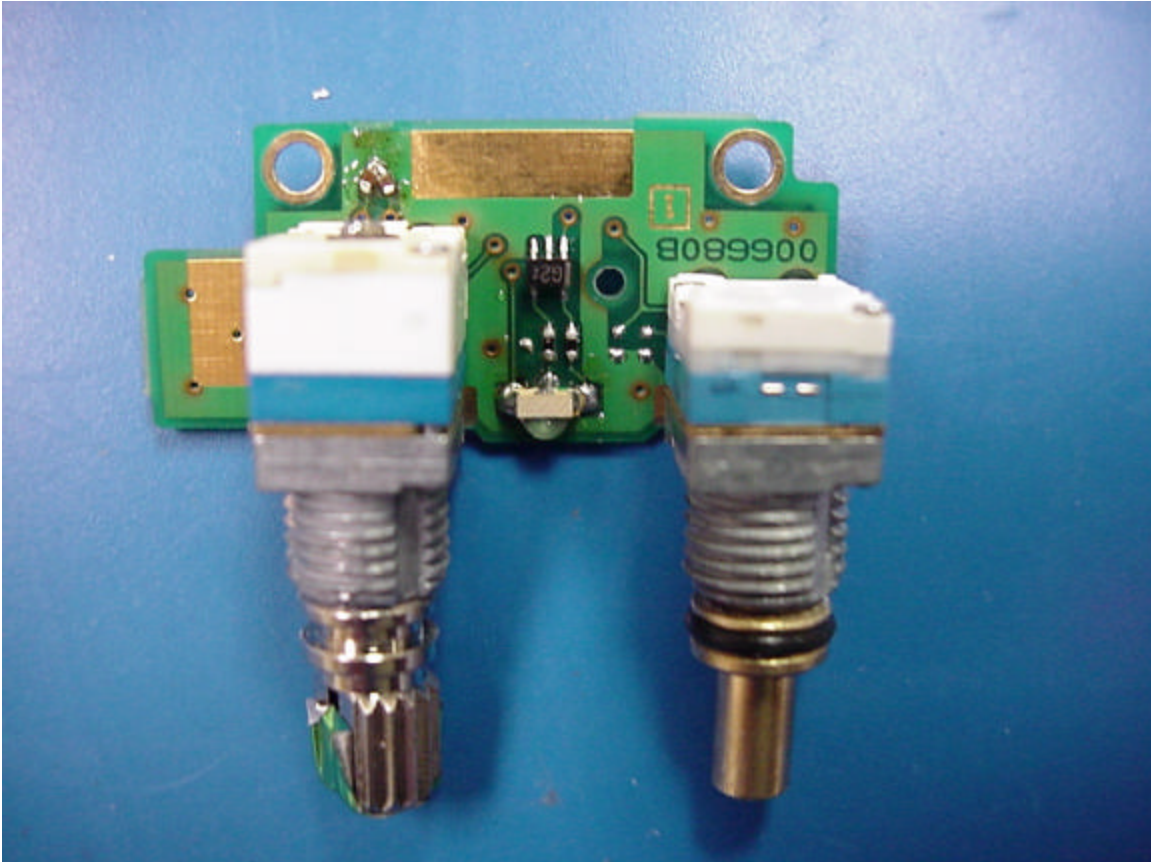
Front of LCD



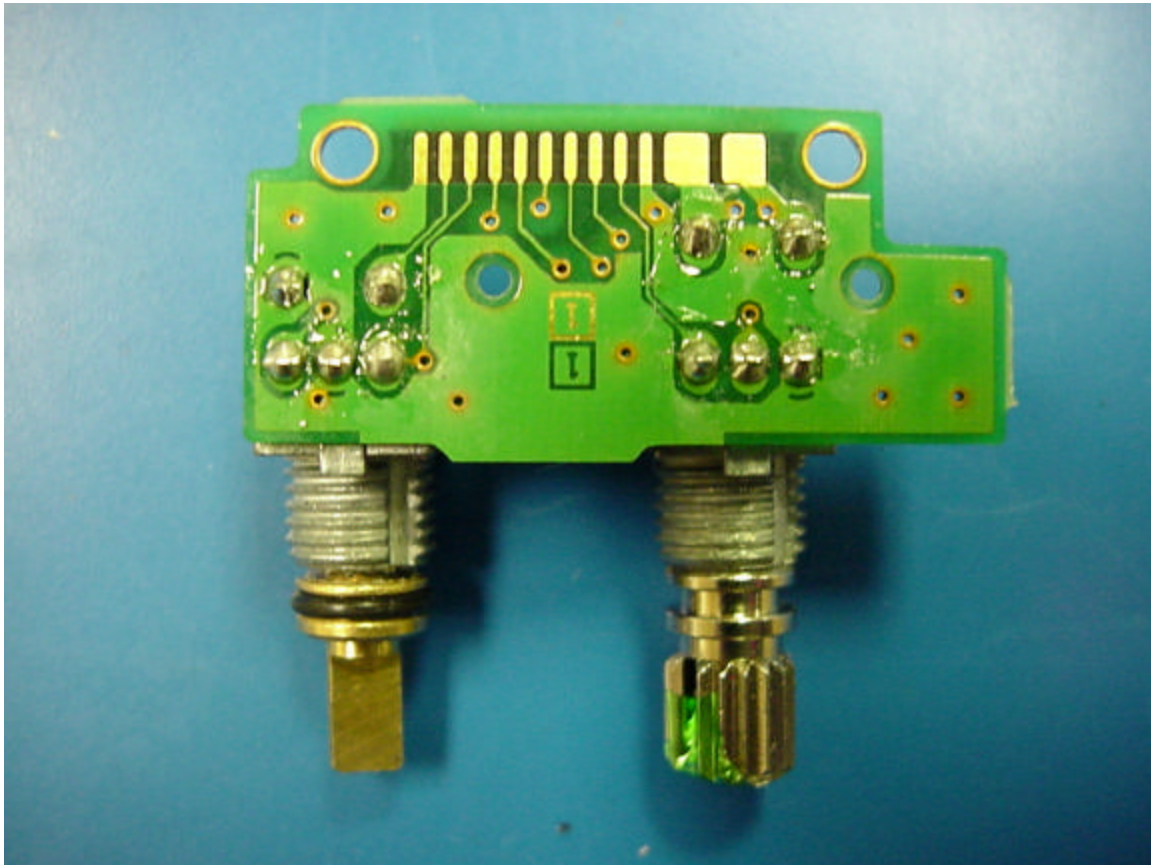
Back of LCD



Component Side of Knob PCB



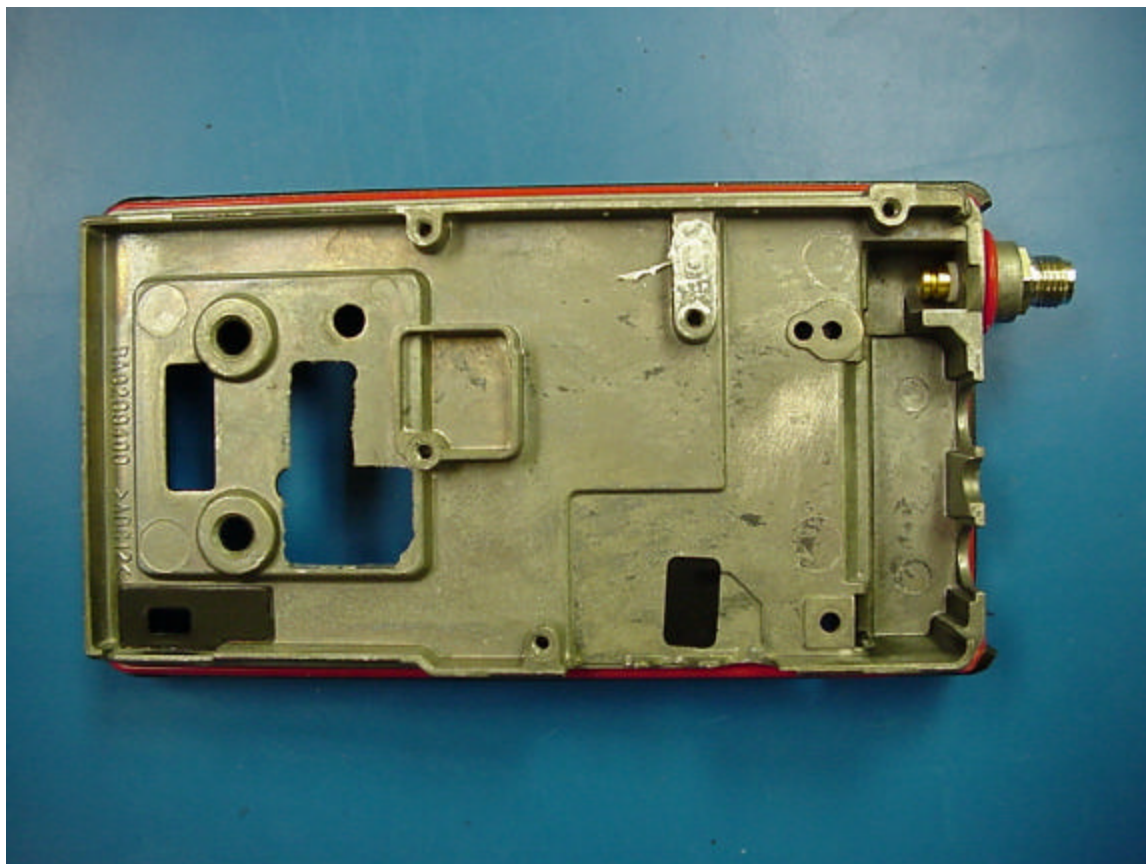
Solder Side of Knob PCB



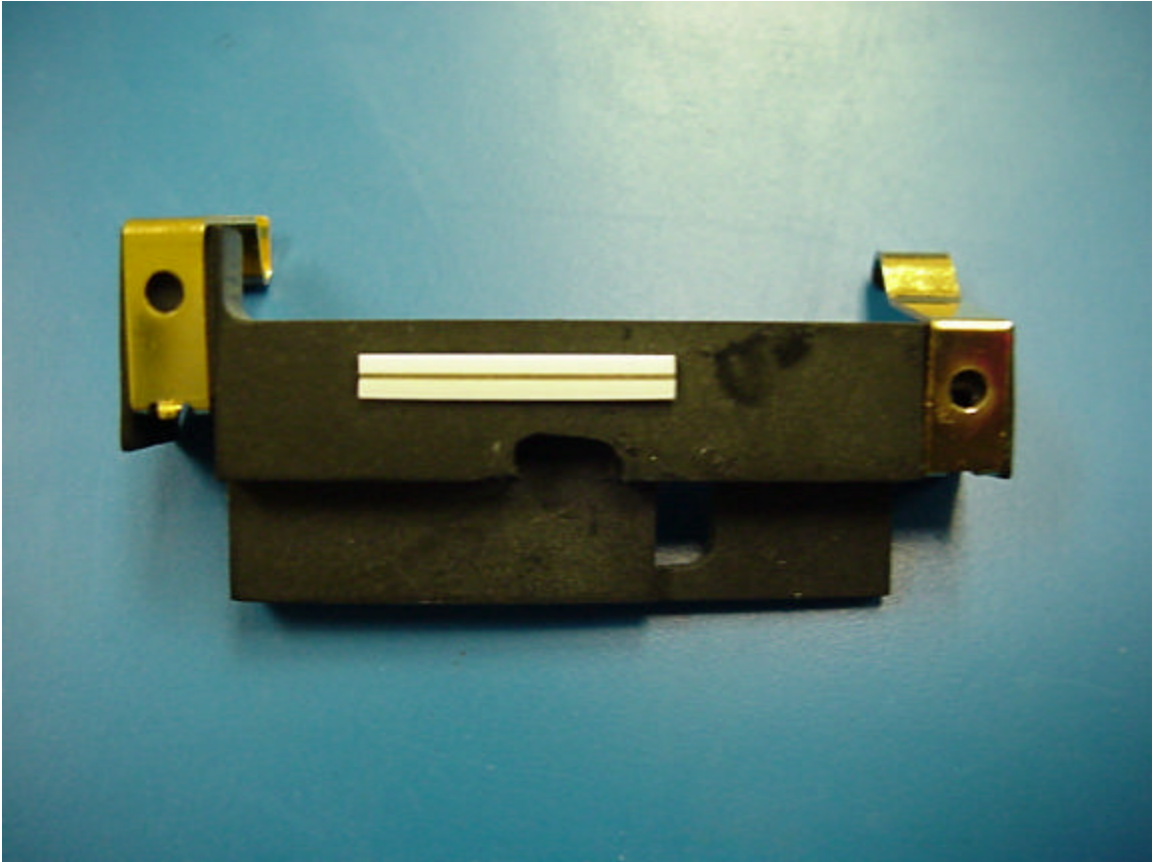
Inside Front of Chassis



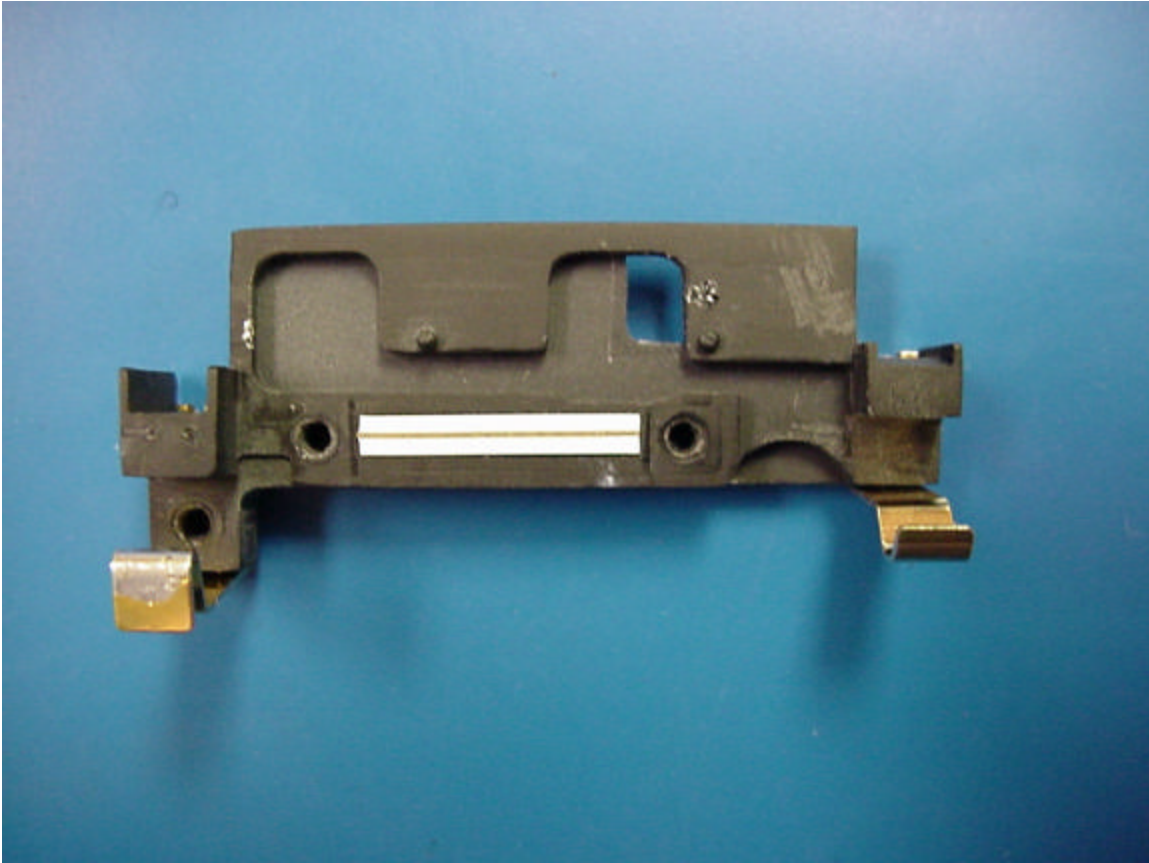
Inside Back of Chassis



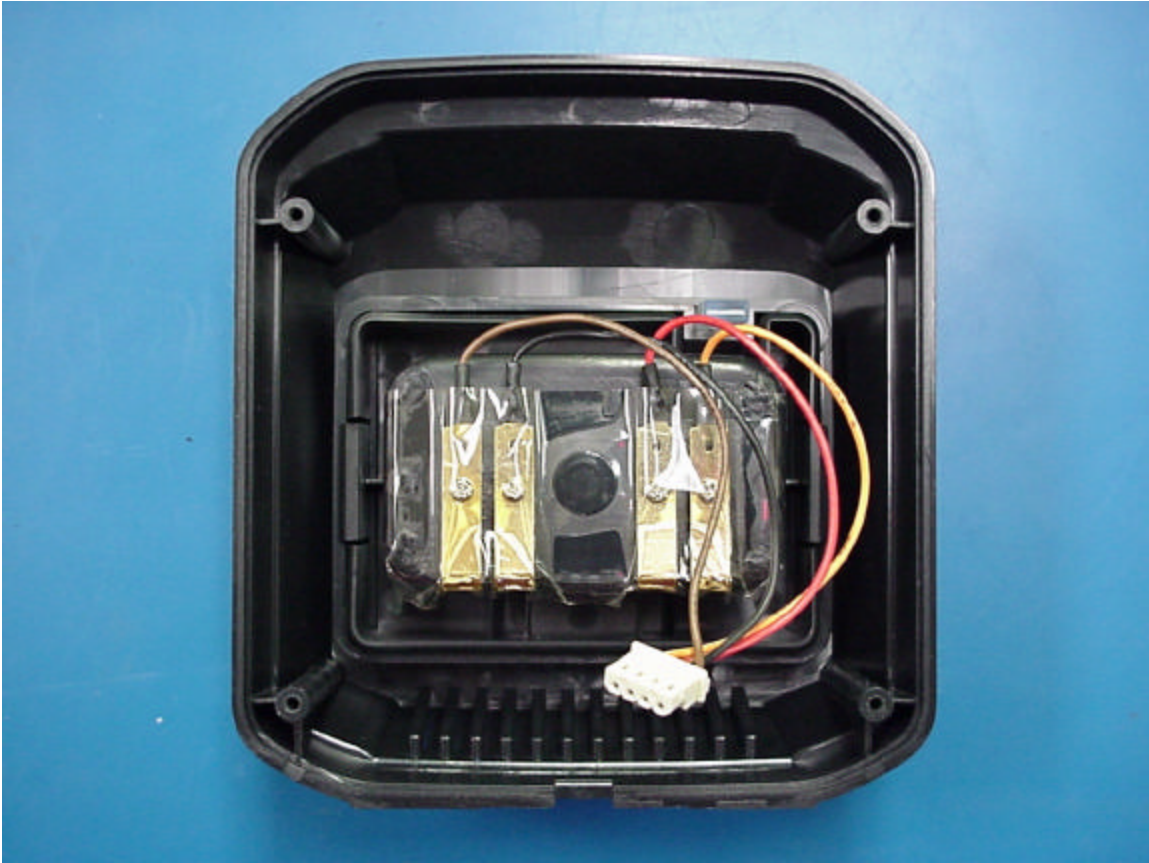
Back of Plastic Stand for Knob PCB



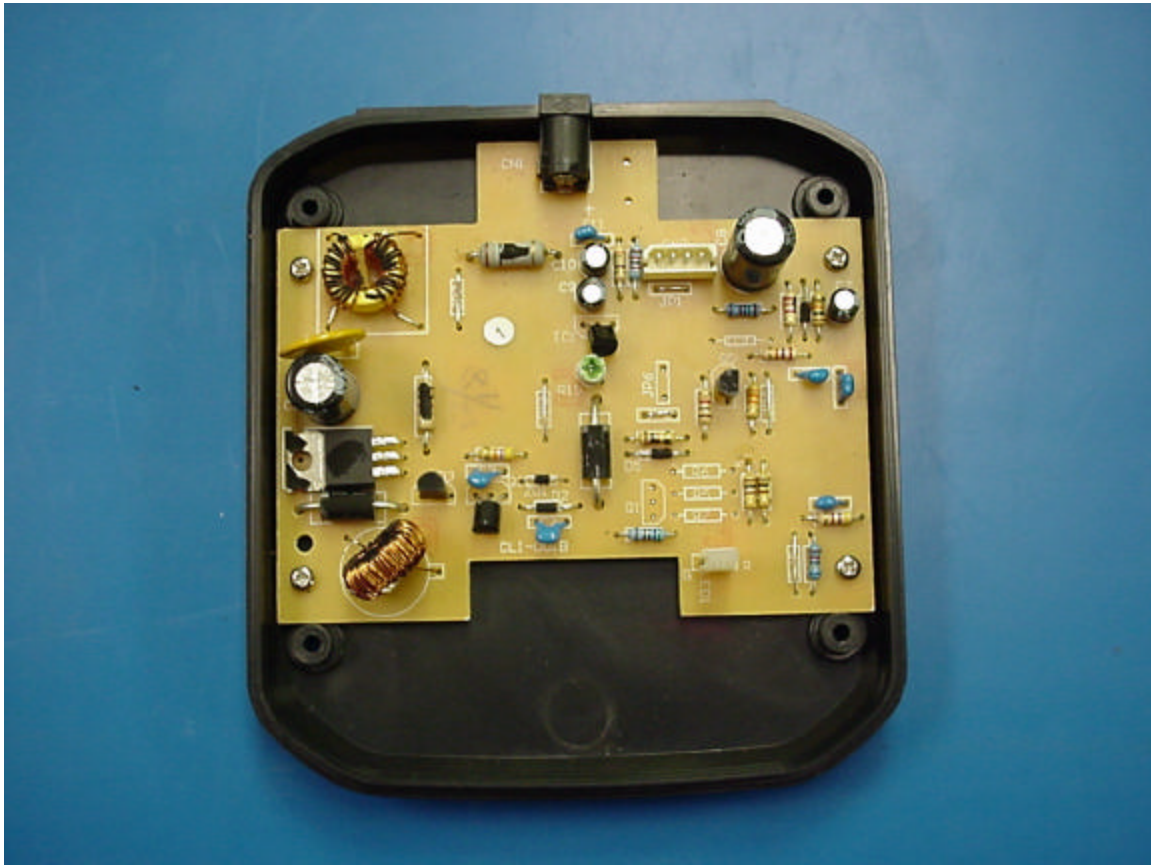
Front of Plastic Stand for Knob PCB



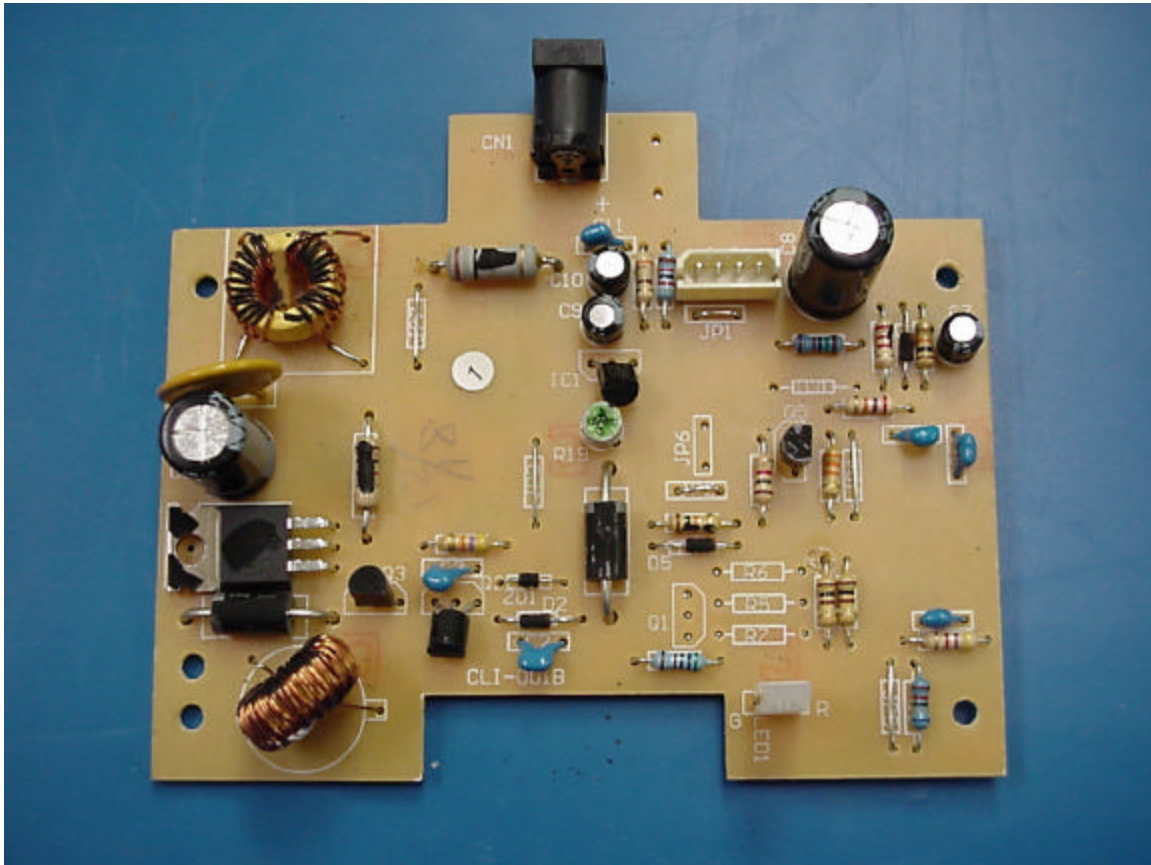
Inside Top of Battery Charger



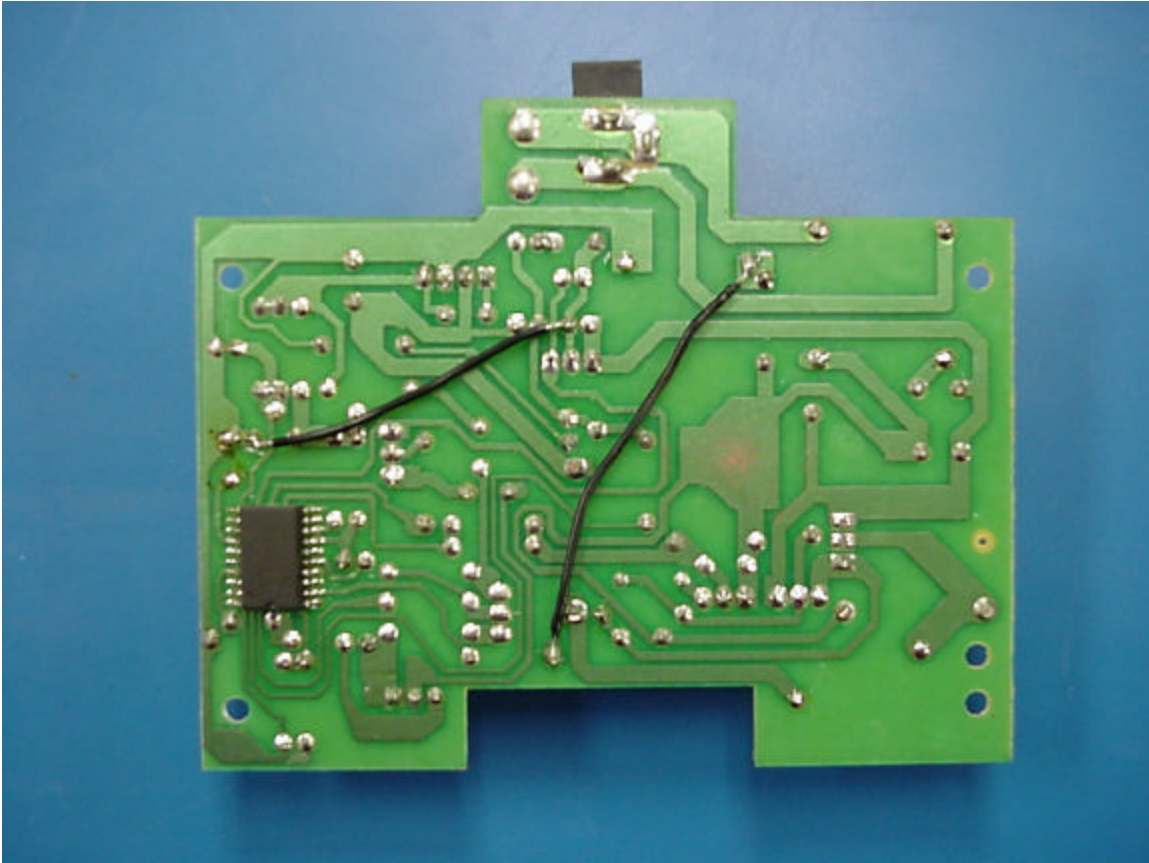
Inside Bottom of Battery Charger



Component Side of Battery Charger PCB



Solder Side of Battery Charger PCB



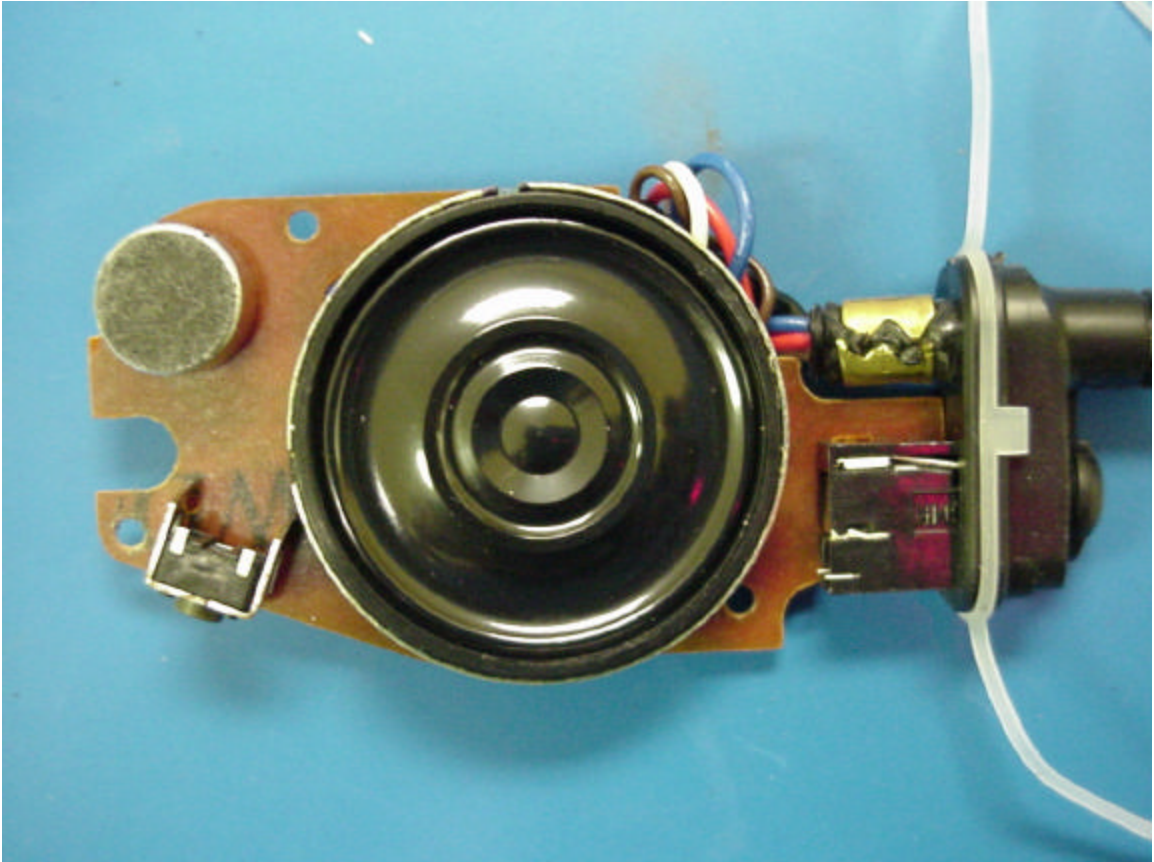
Inside Top of Battery Charger Chassis



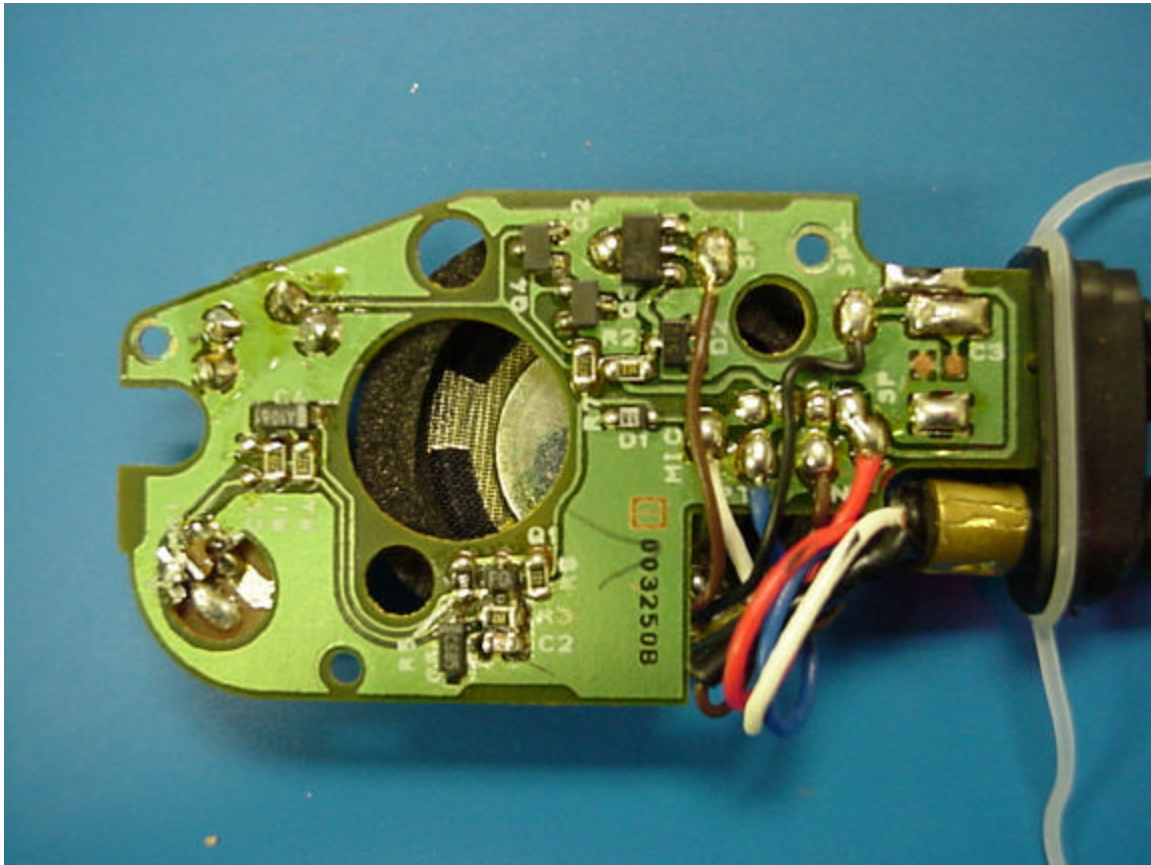
Inside Bottom of Battery Charger Chassis



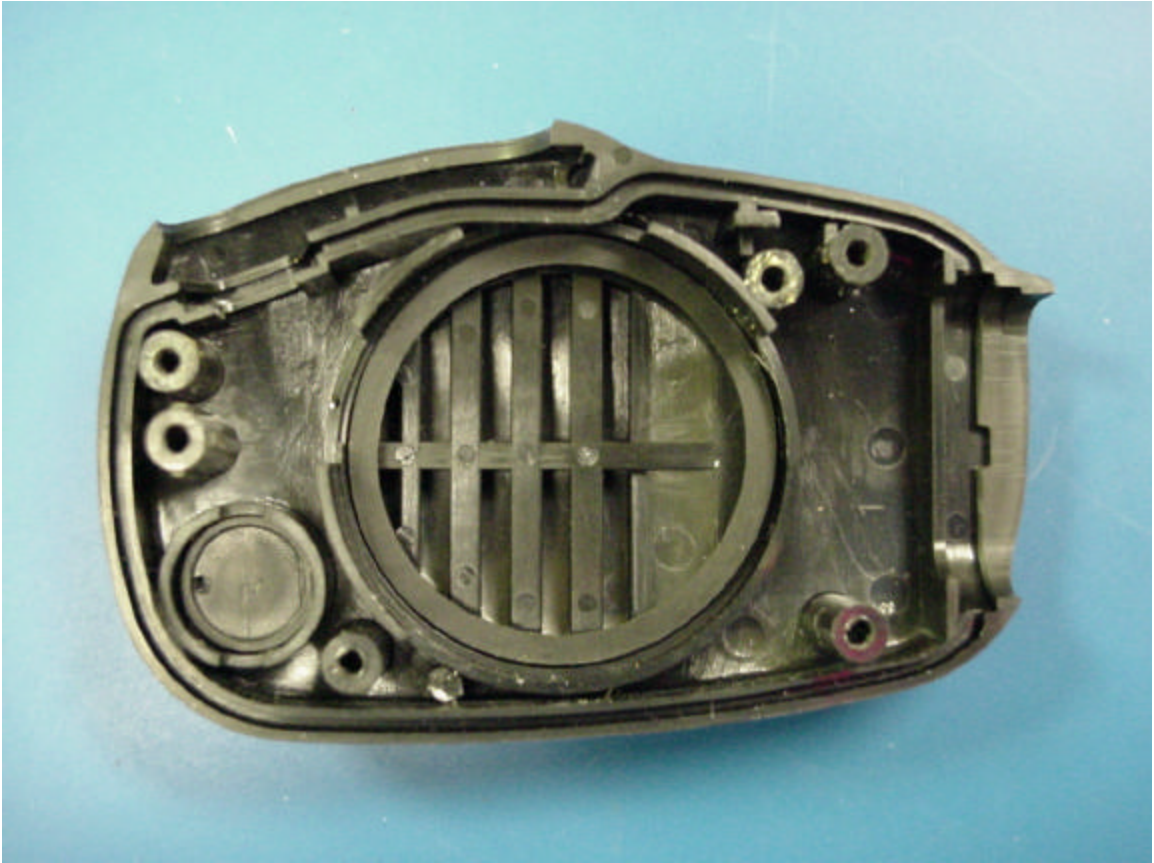
Front of Microphone PCB



Back of Microphone PCB



Inside of Front Microphone Chassis



Inside Back of Microphone Chassis

