

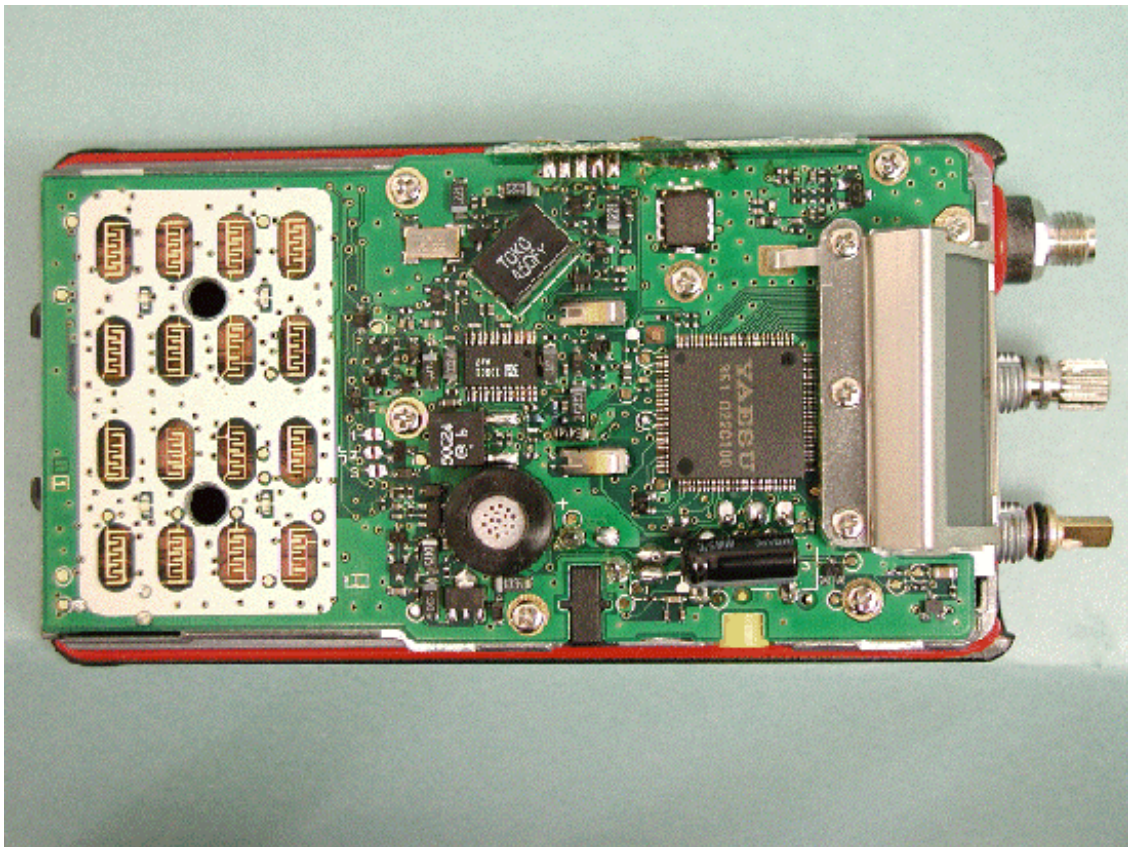
Back of EUT without battery pack



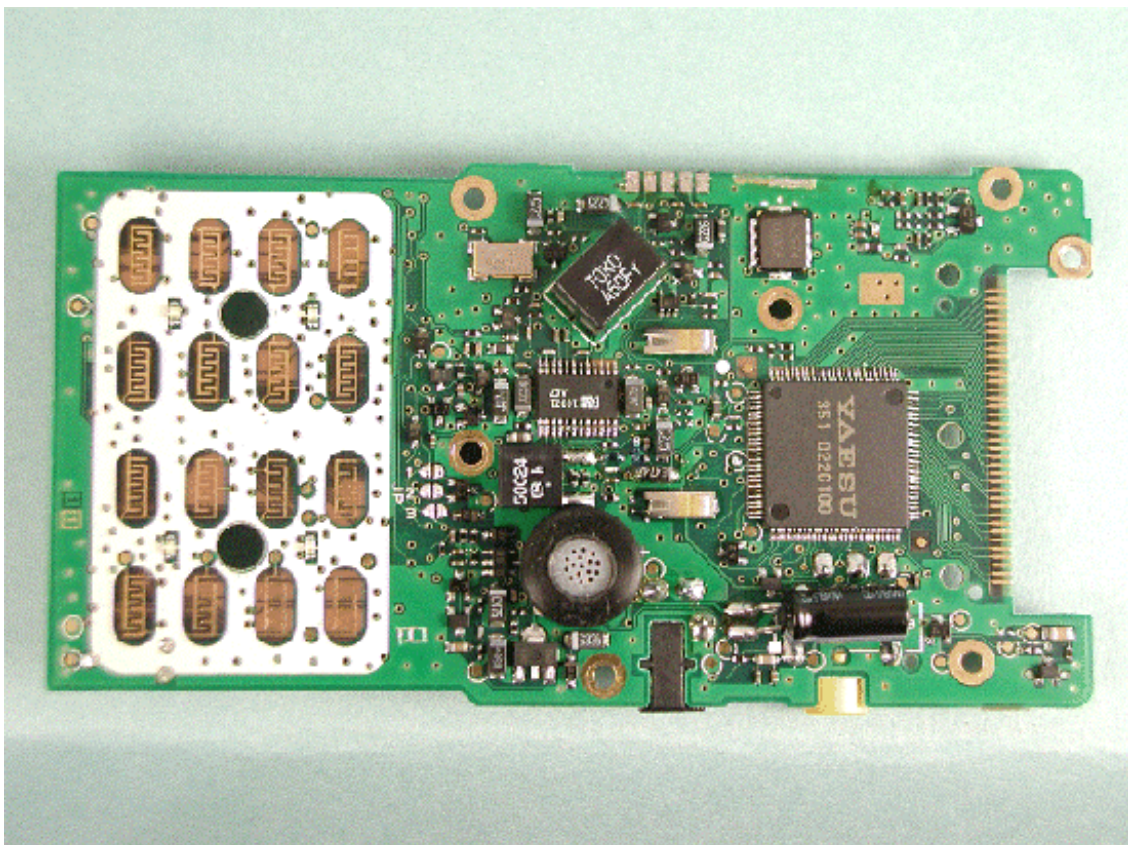
Battery pack



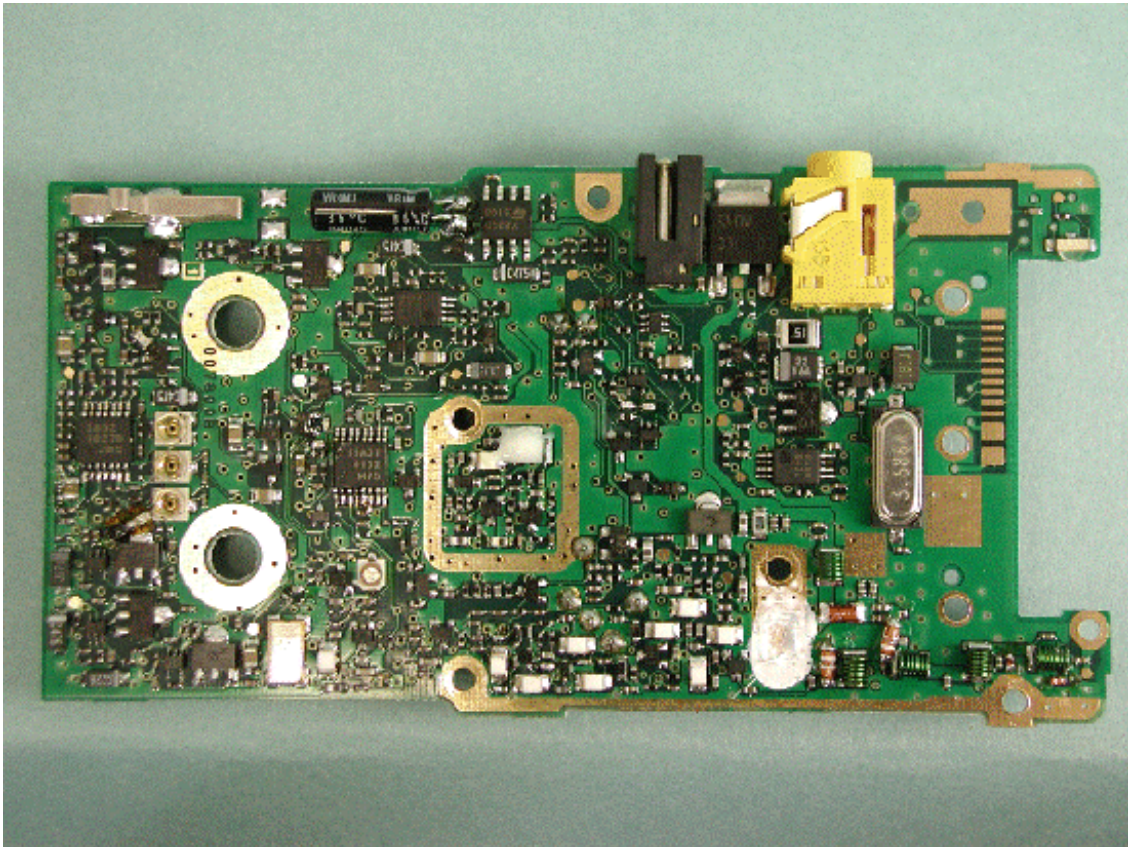
Component side of MAIN-UNIT with LCD



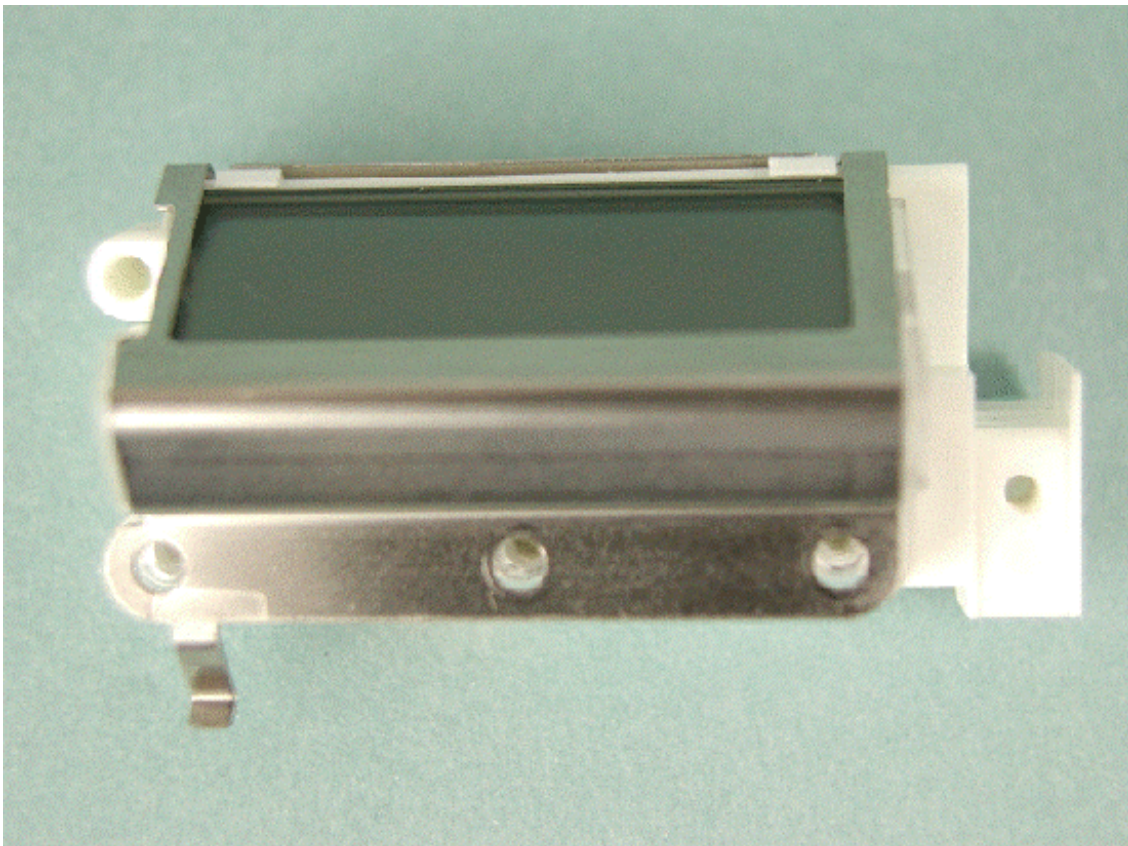
Component side of MAIN-UNIT without LCD



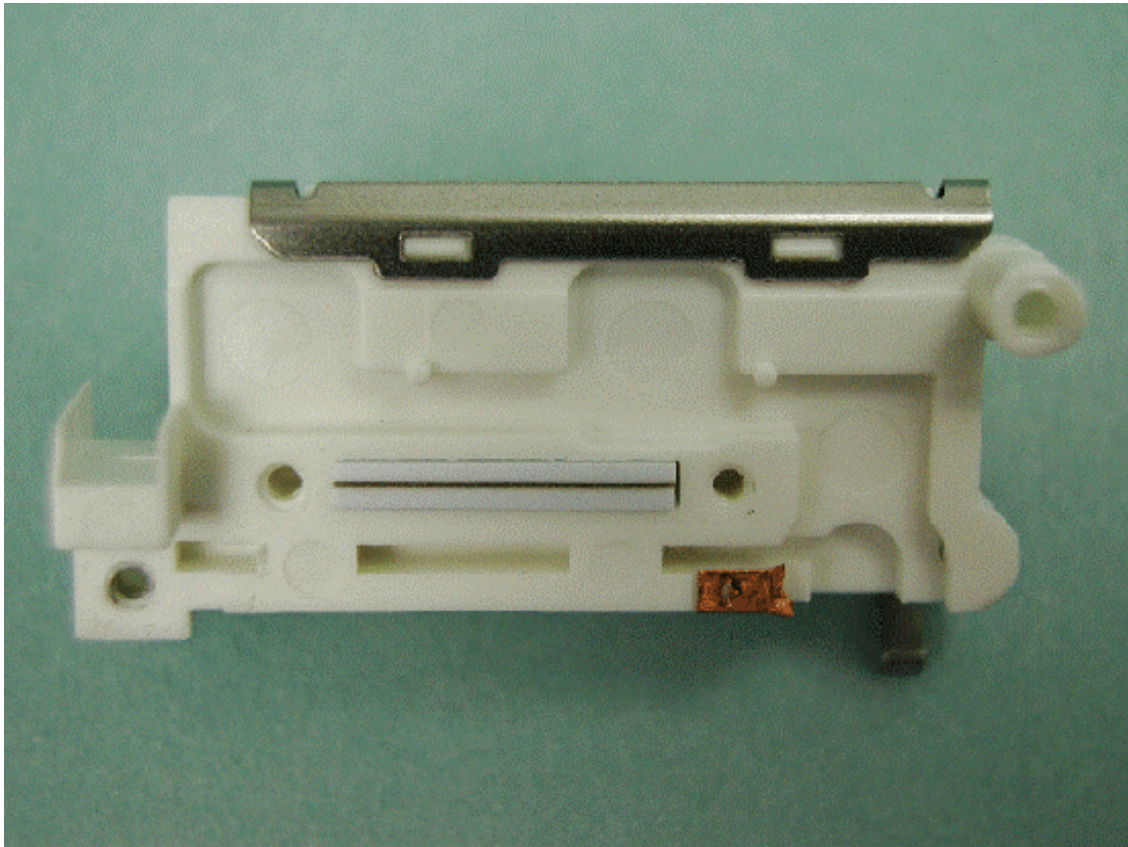
Solder side of MAIN-UNIT



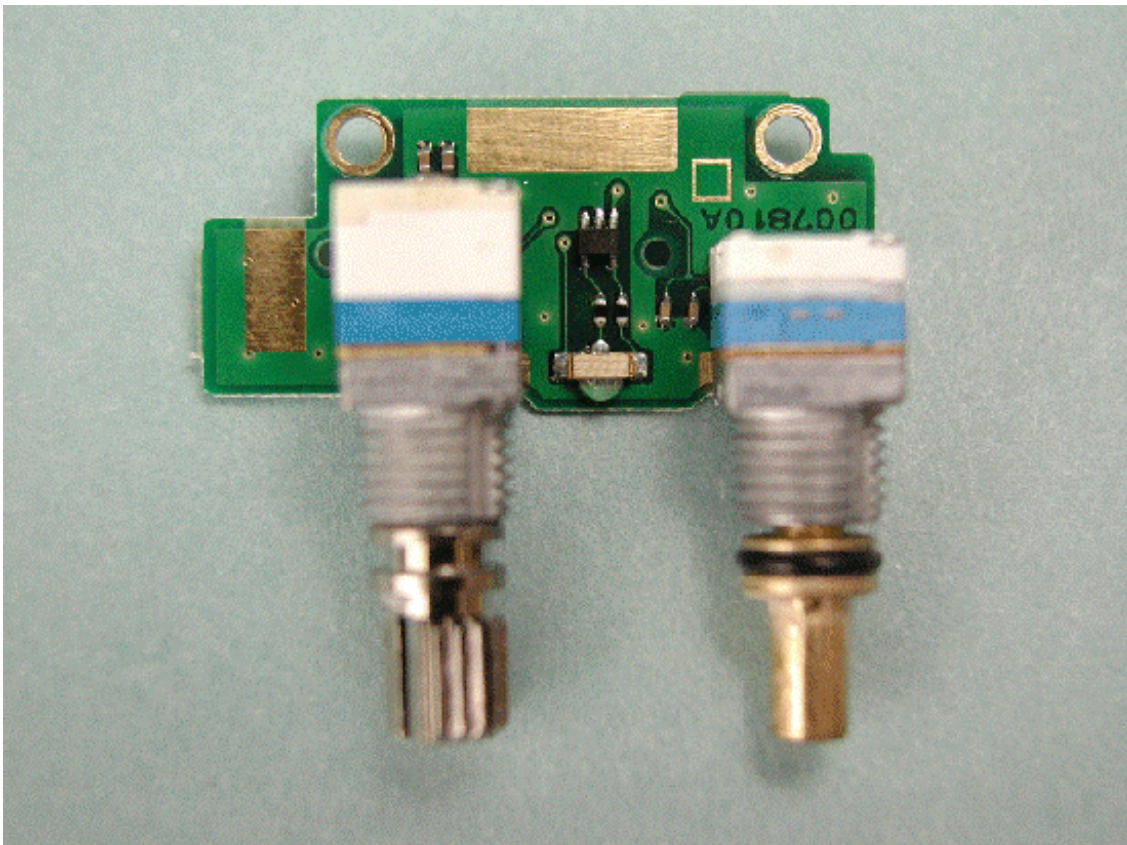
Front of LCD



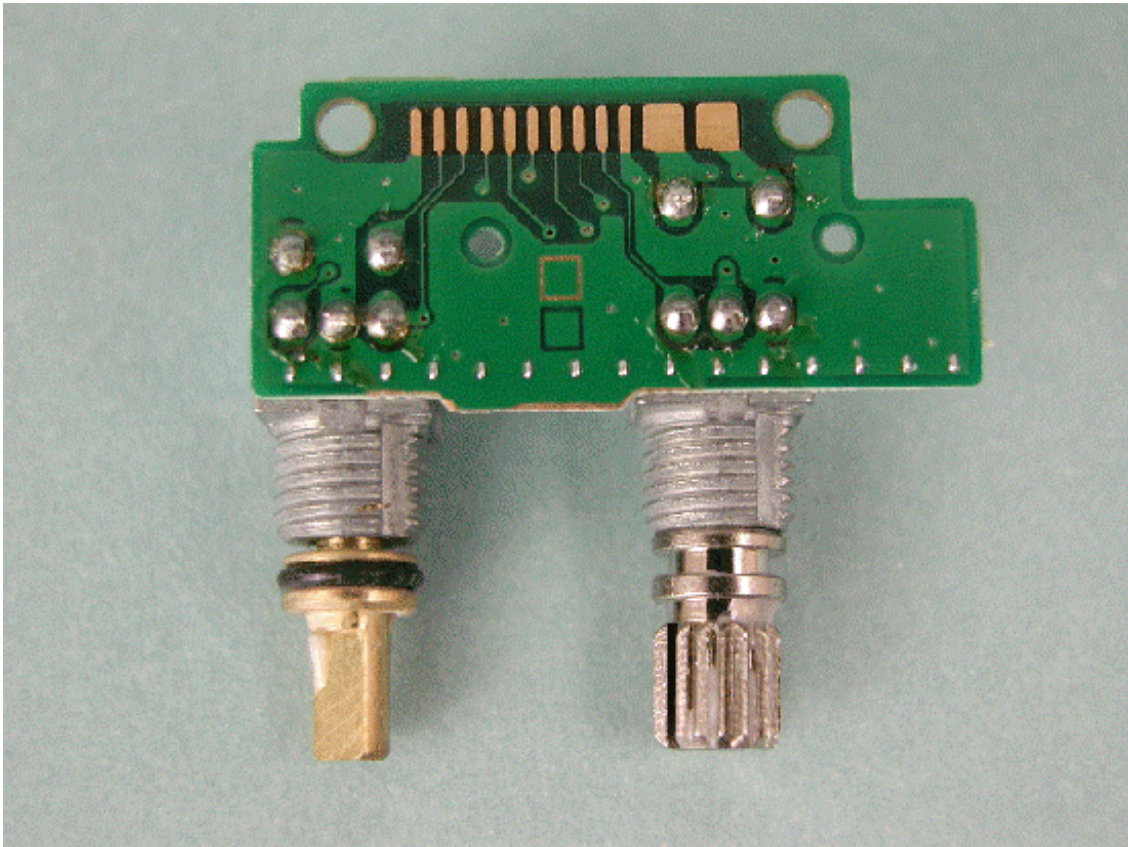
Back of LCD



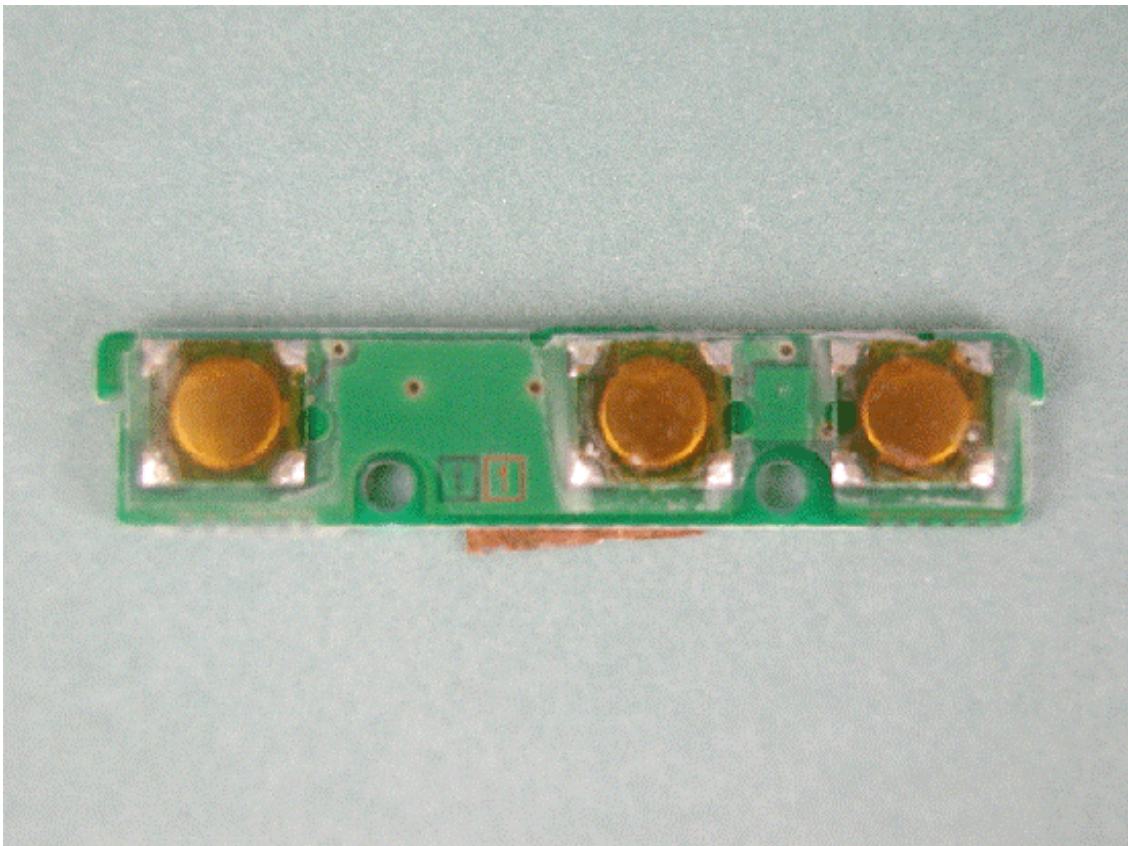
Side-A of VR-UNIT



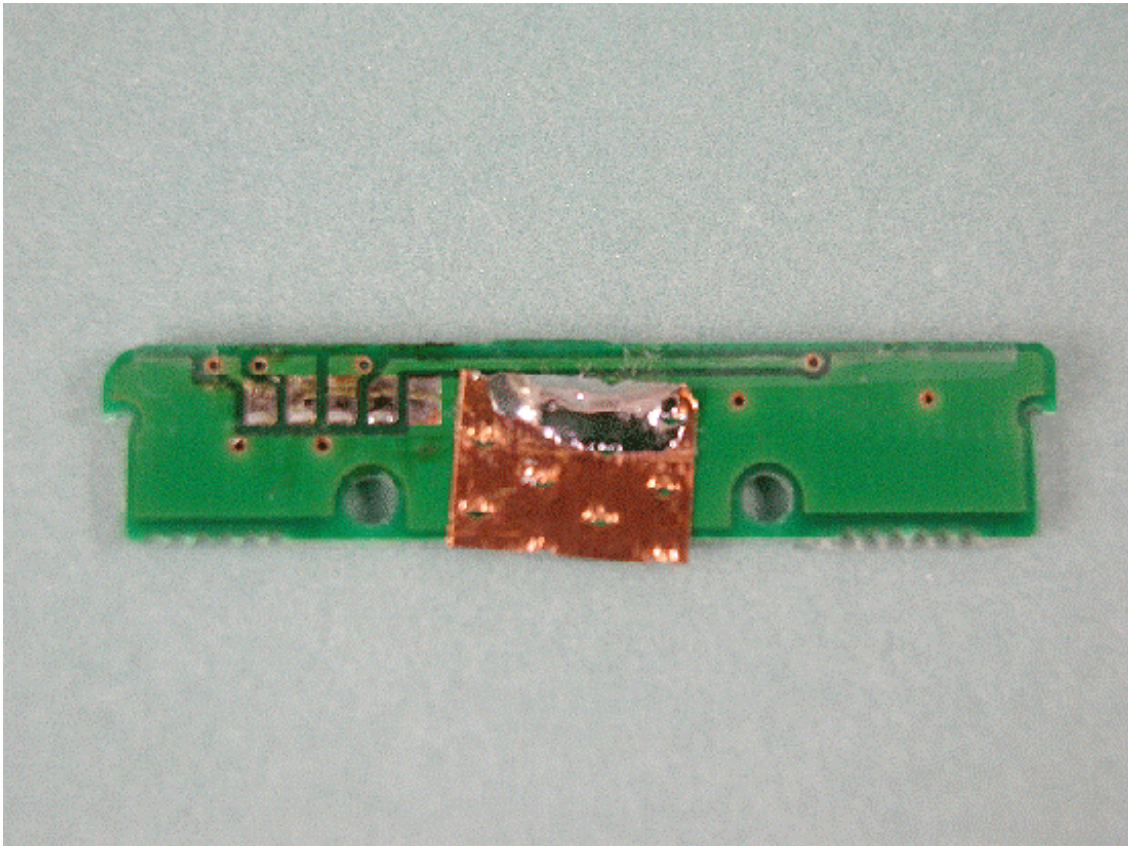
Side-B of VR-UNIT



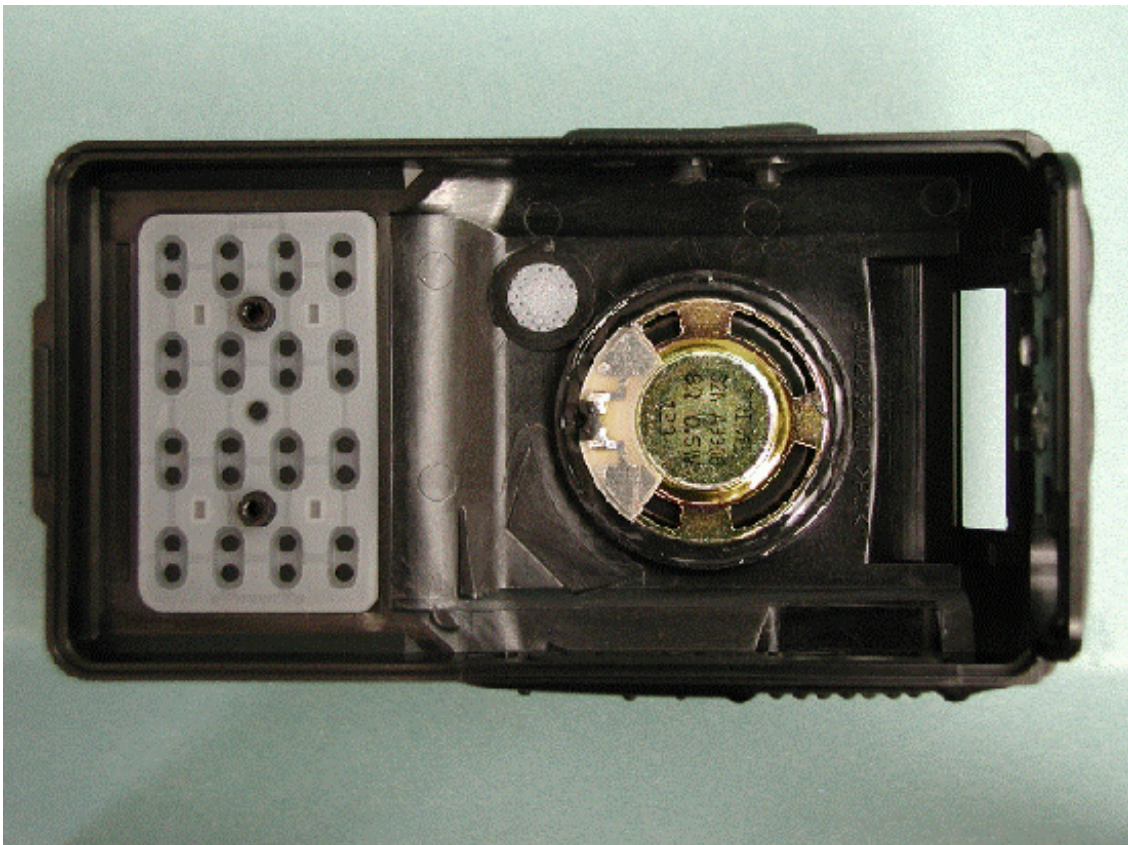
Side-A of SW-UNIT



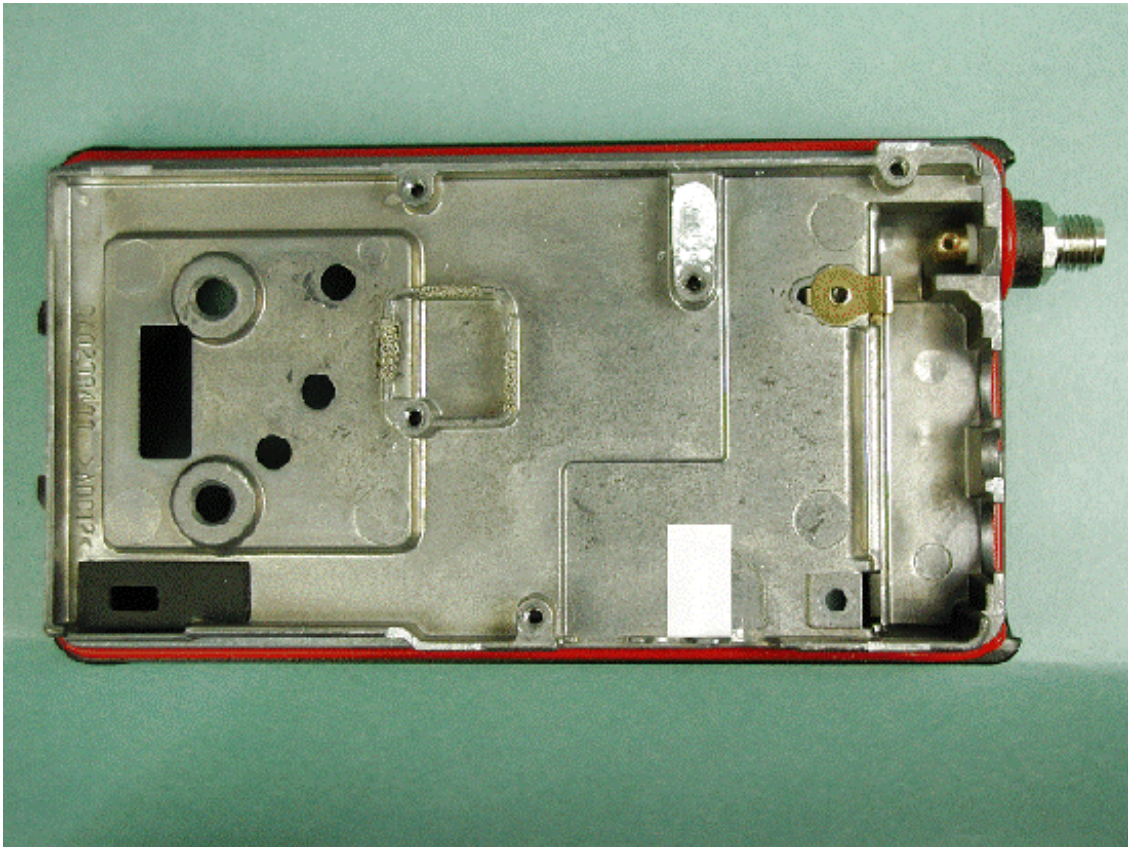
Side-B of SW-UNIT



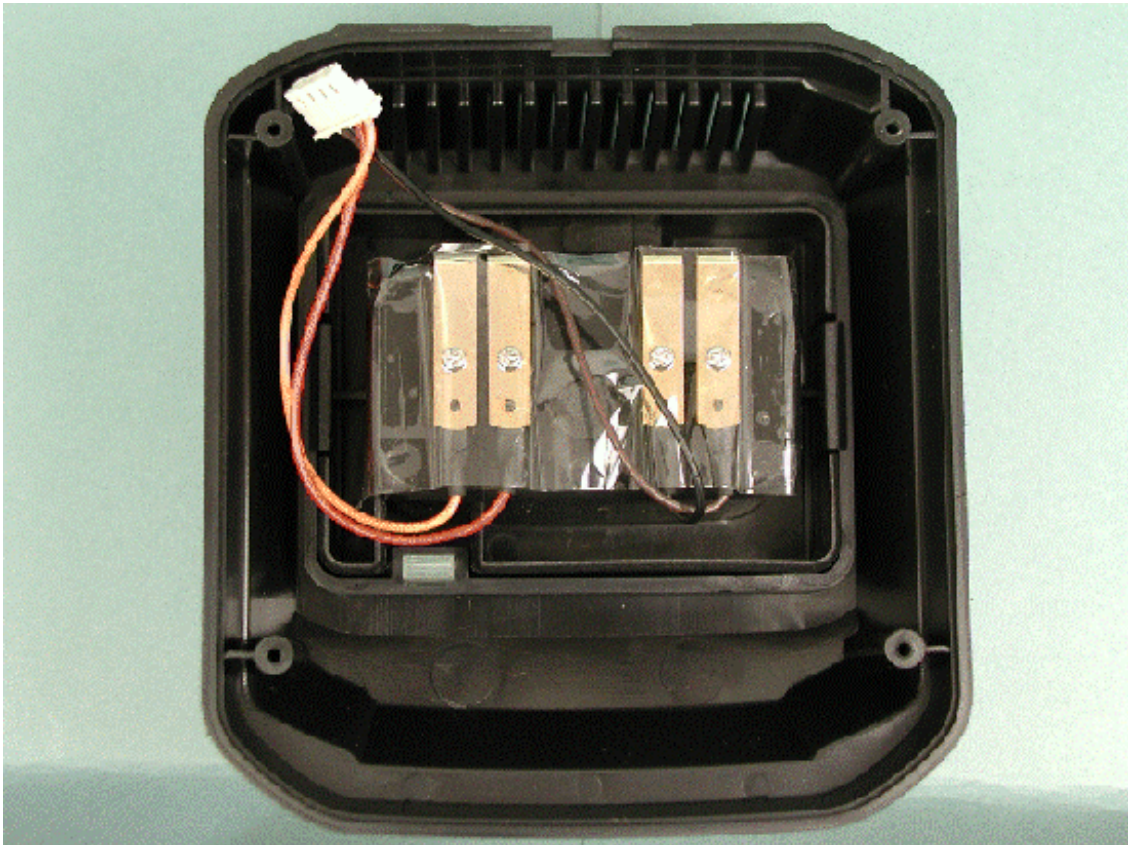
Inside of front panel



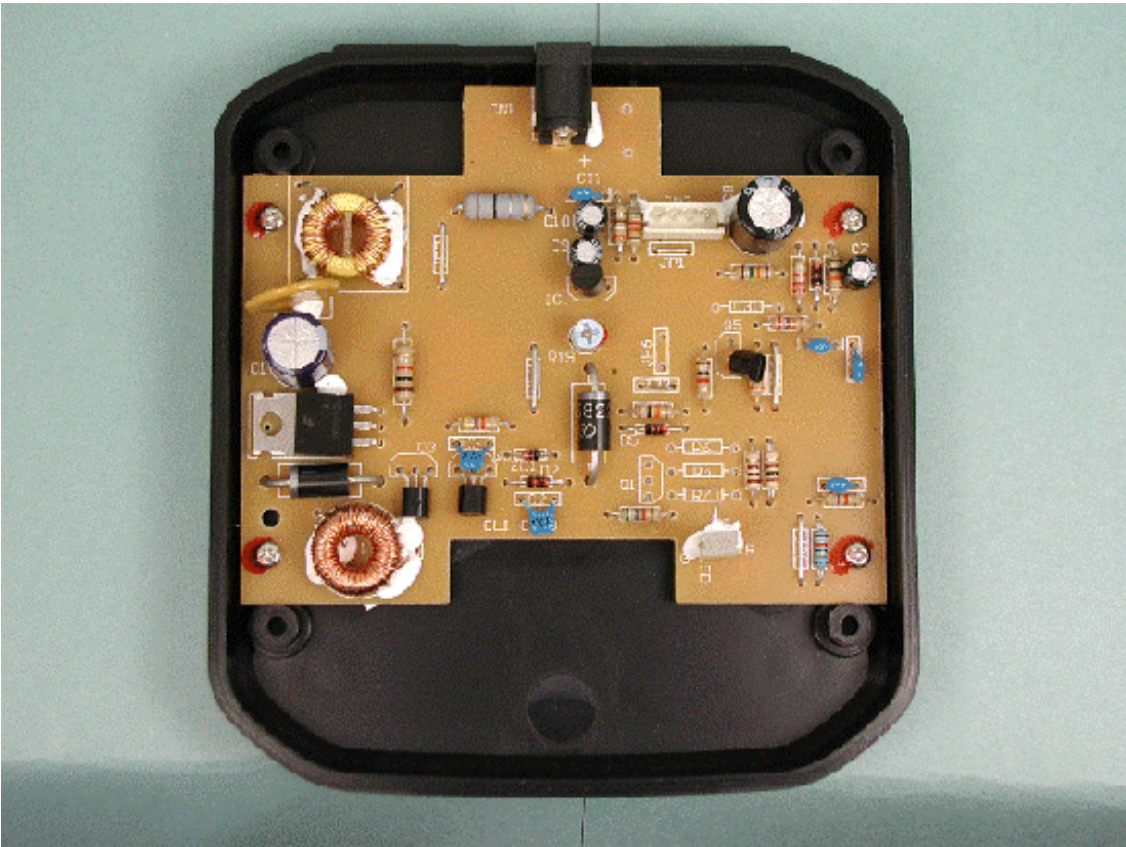
Inside back of chassis



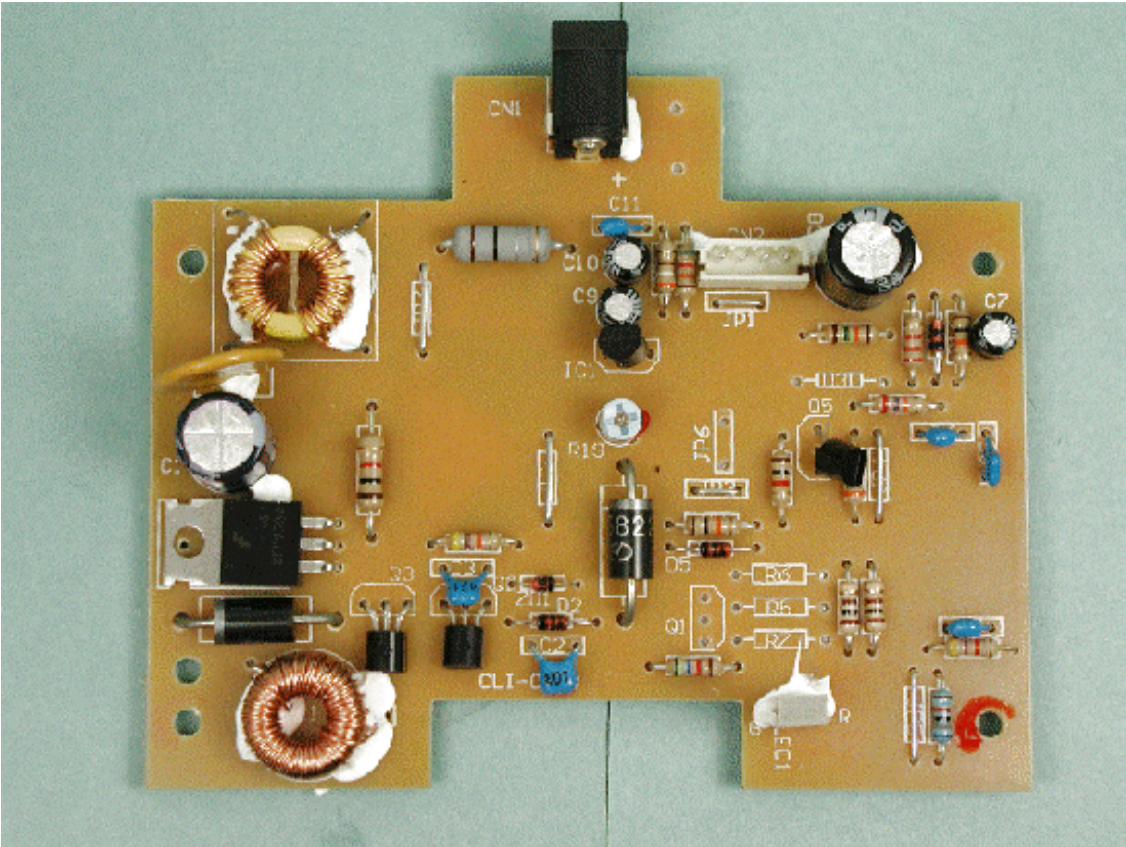
Inside top of battery charger



Inside bottom of battery charger

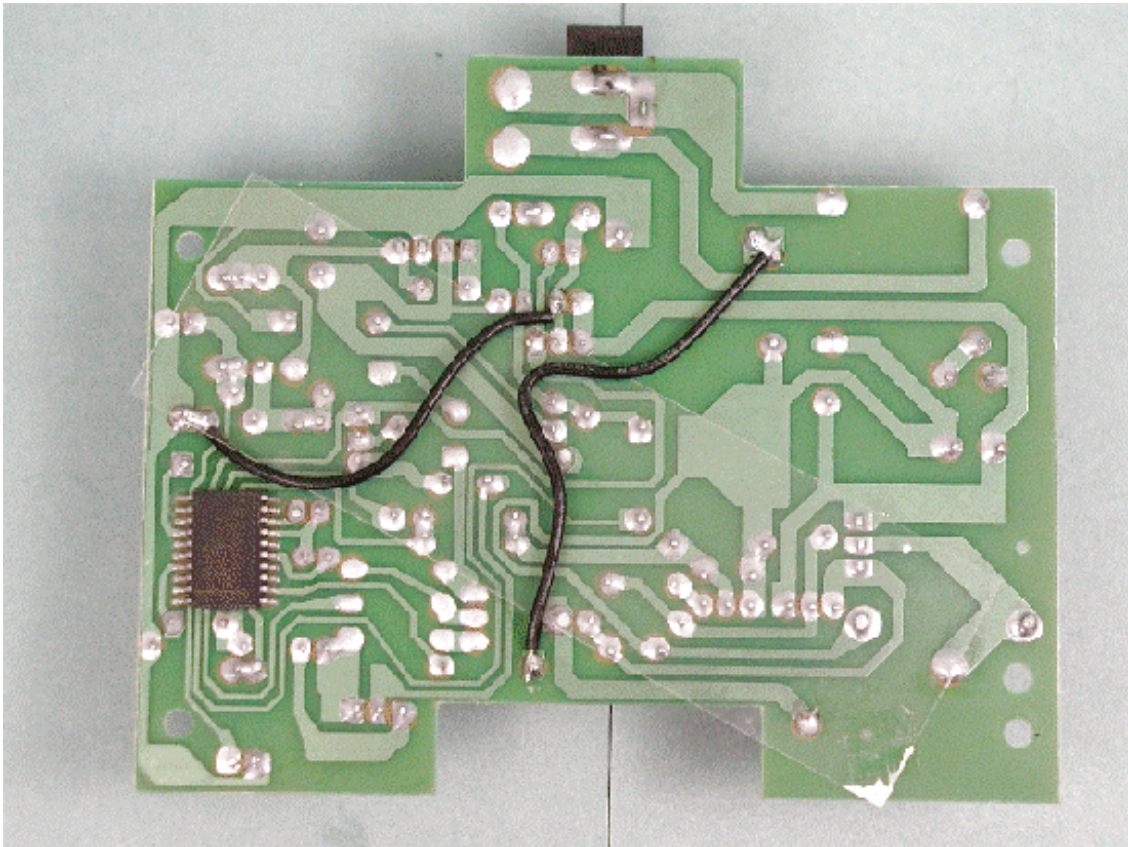


Component side of battery charger PCB

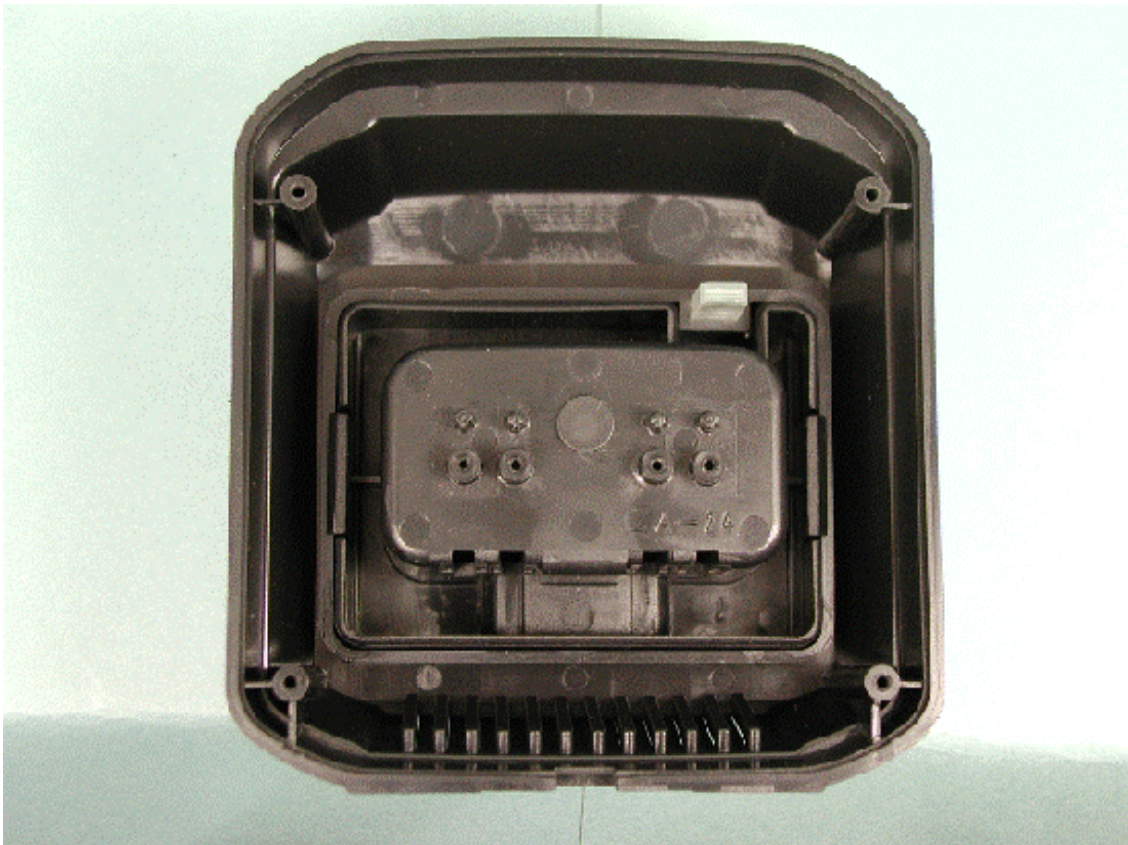




Solder side of battery charger PCB



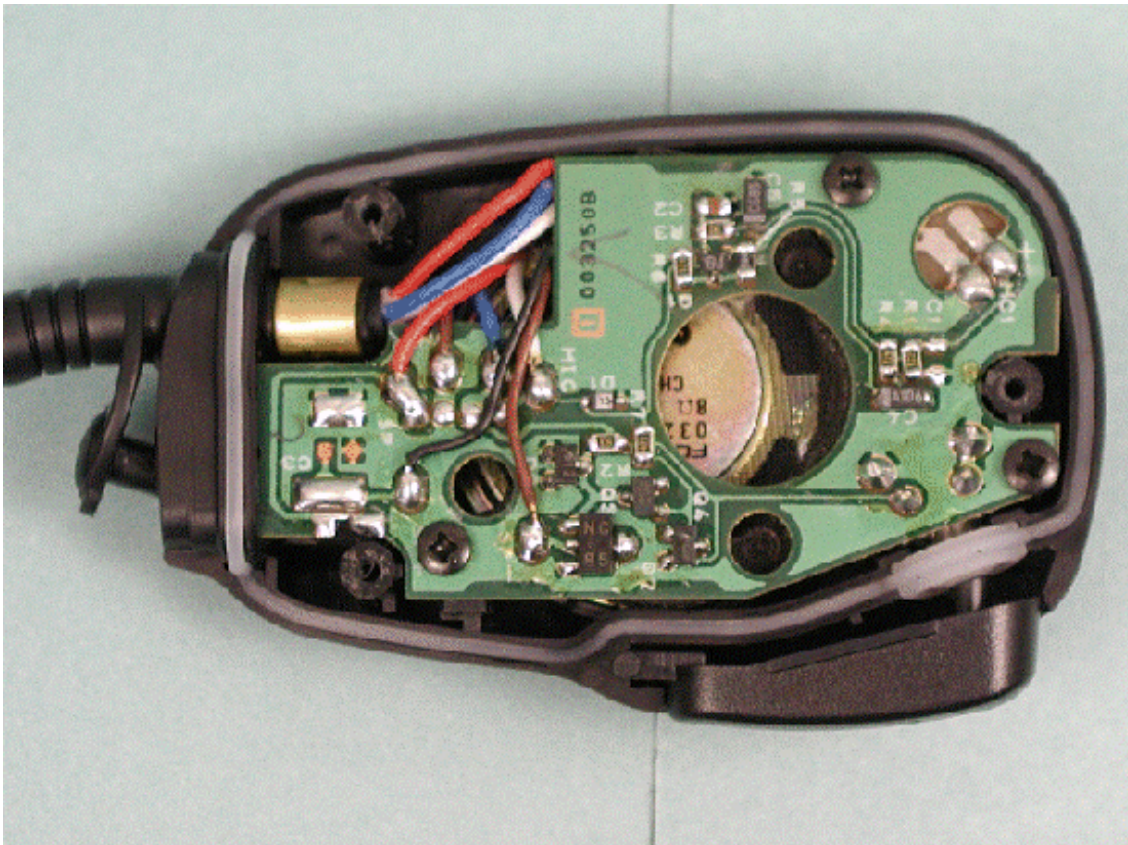
Inside top of battery charger chassis



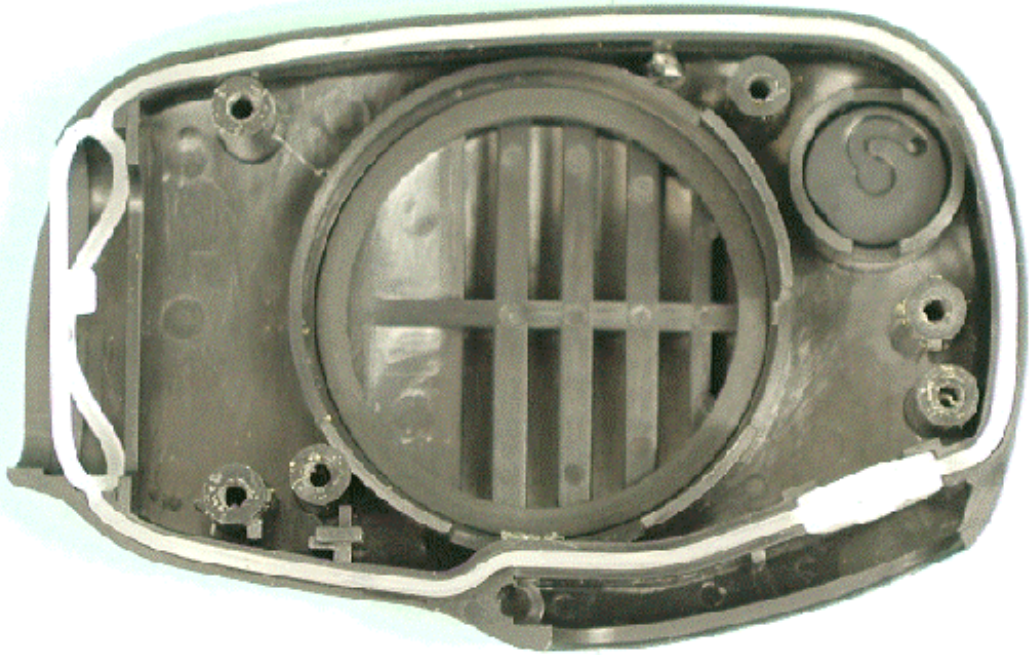
Inside bottom of battery charger chassis



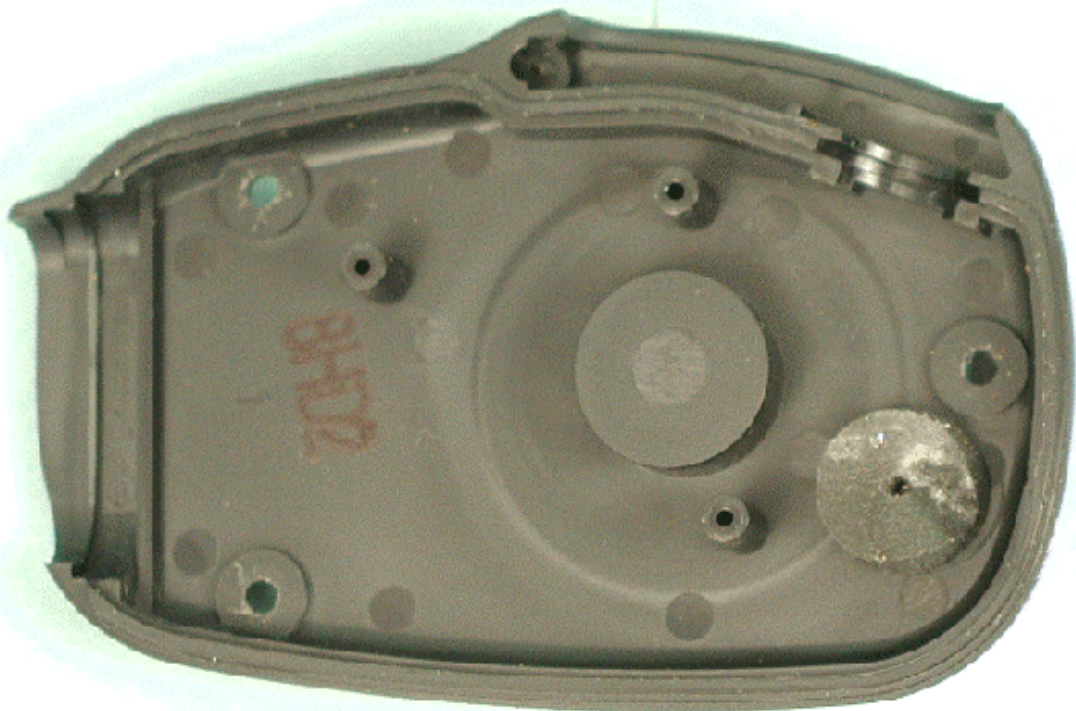
Inside of microphone



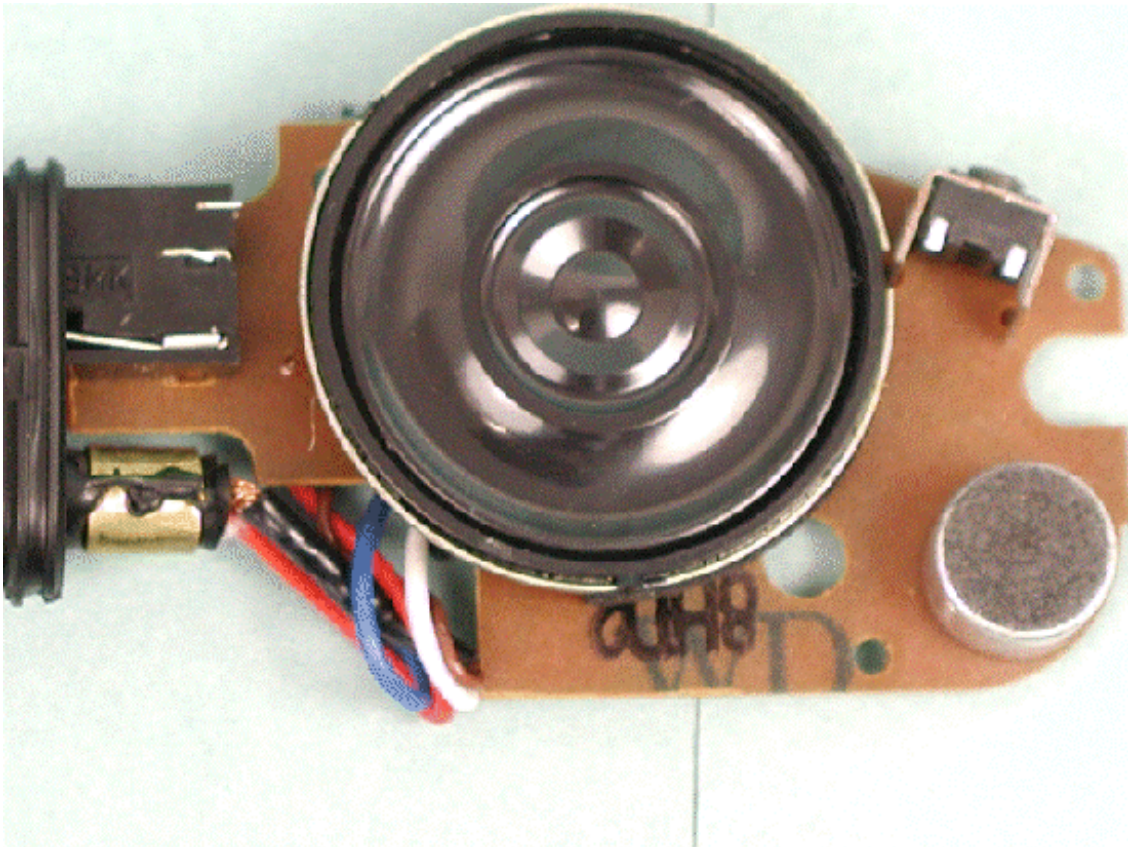
Inside front of microphone chassis



Inside back of microphone chassis



Component side of microphone PCB



Solder side of microphone PCB

