

Inside of EUT with copper cover

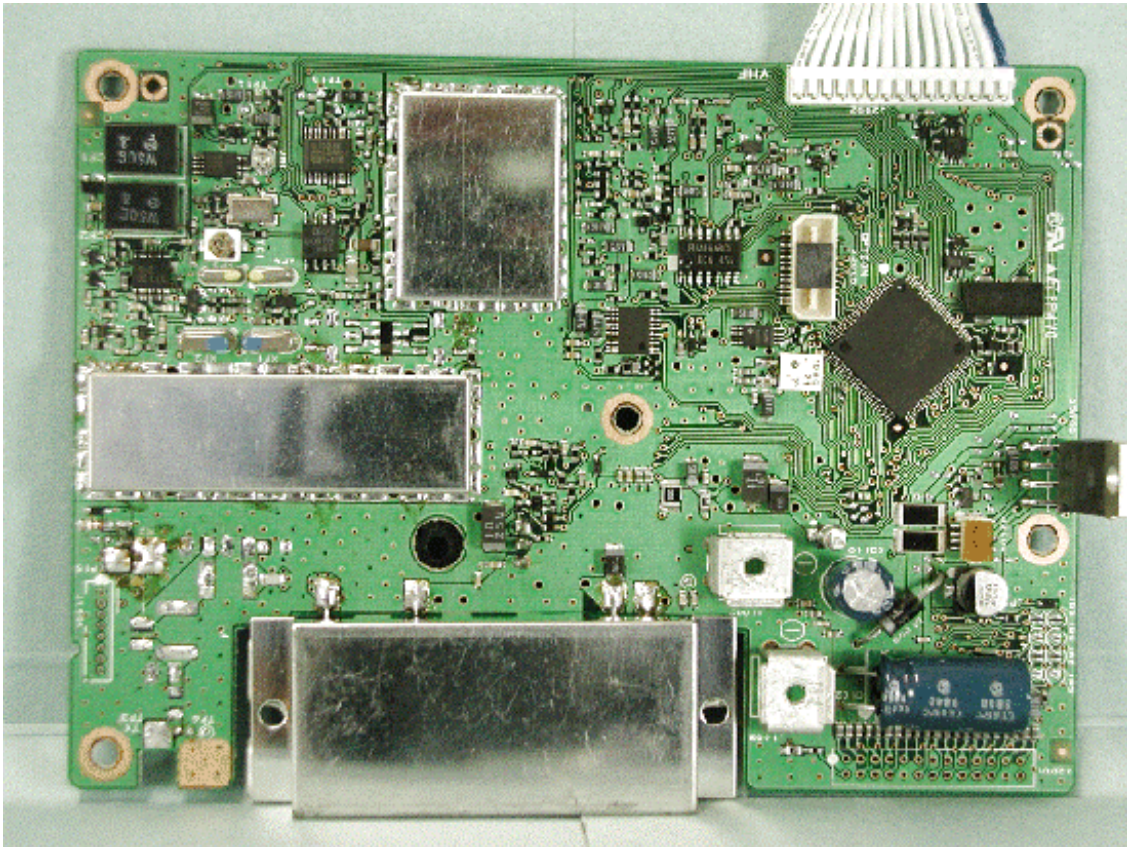


Inside of EUT without copper cover

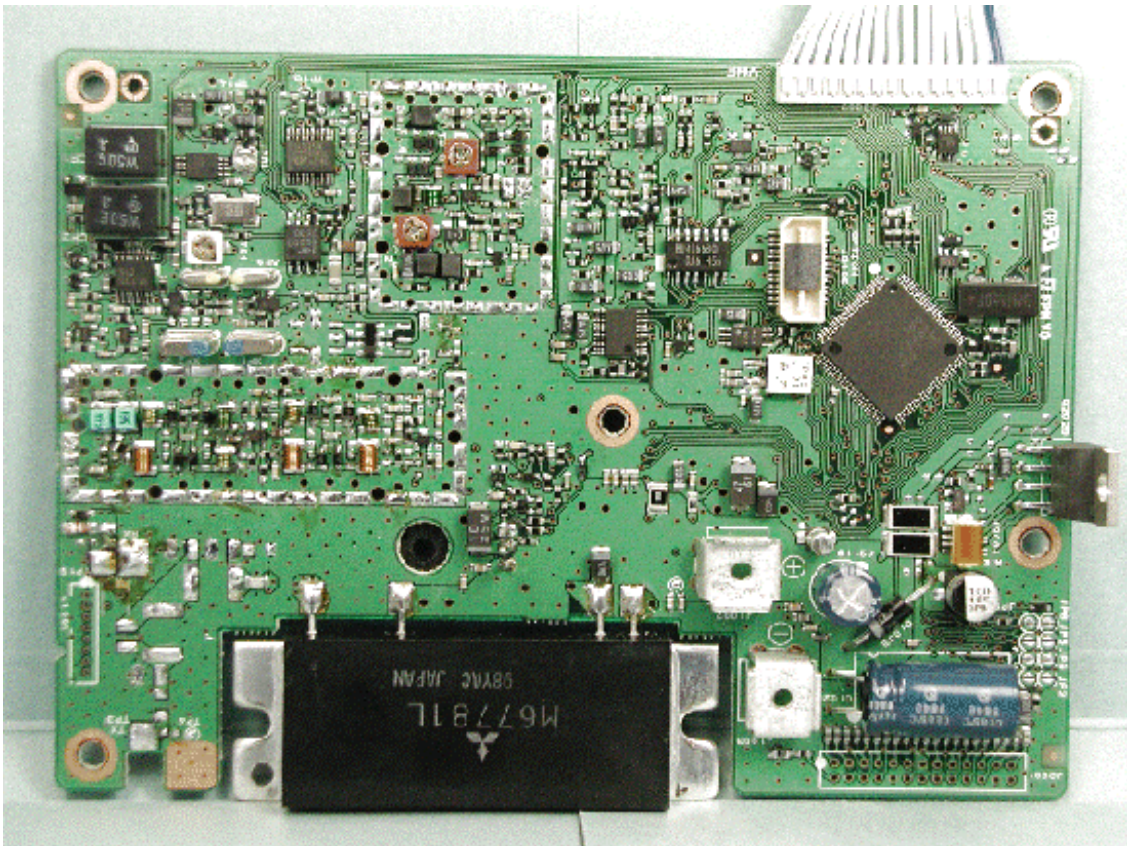




Component side of MAIN-UNIT with shield cases

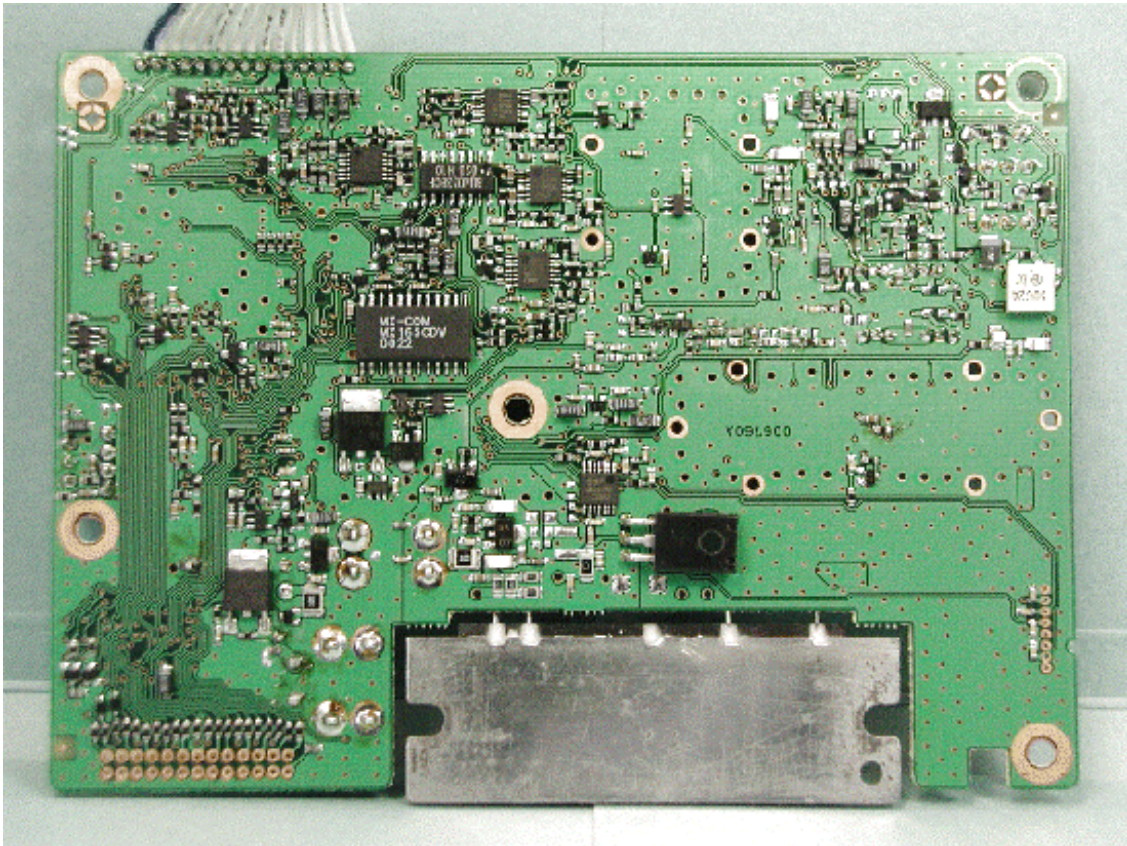


Component side of MAIN-UNIT without shield cases

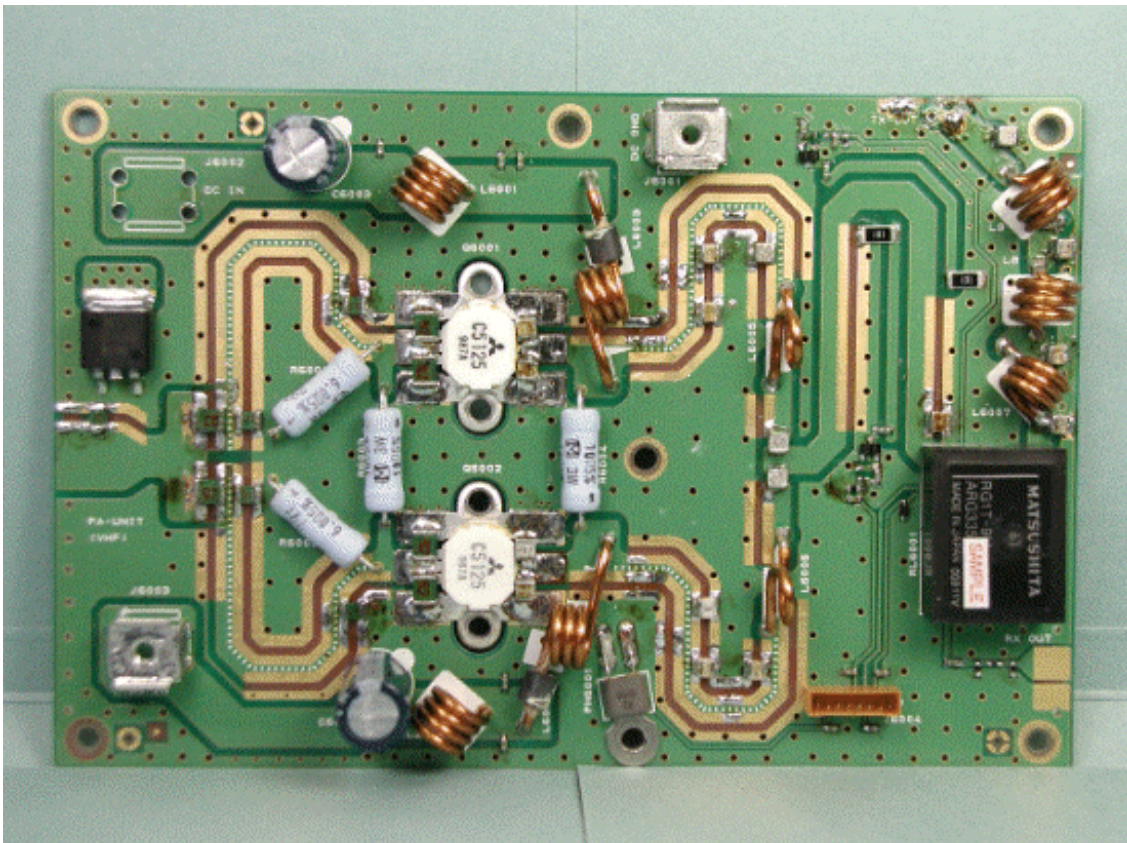




Solder side of MAIN-UNIT

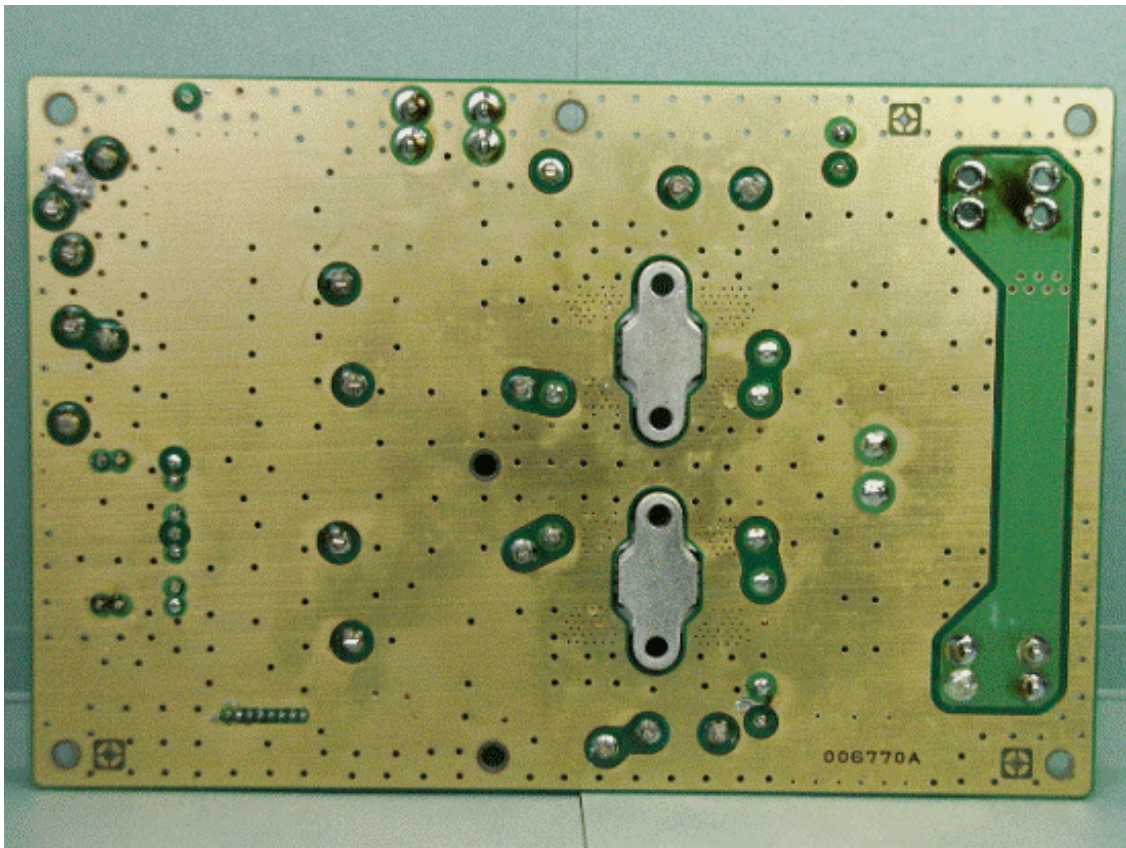


Component side of PA-UNIT

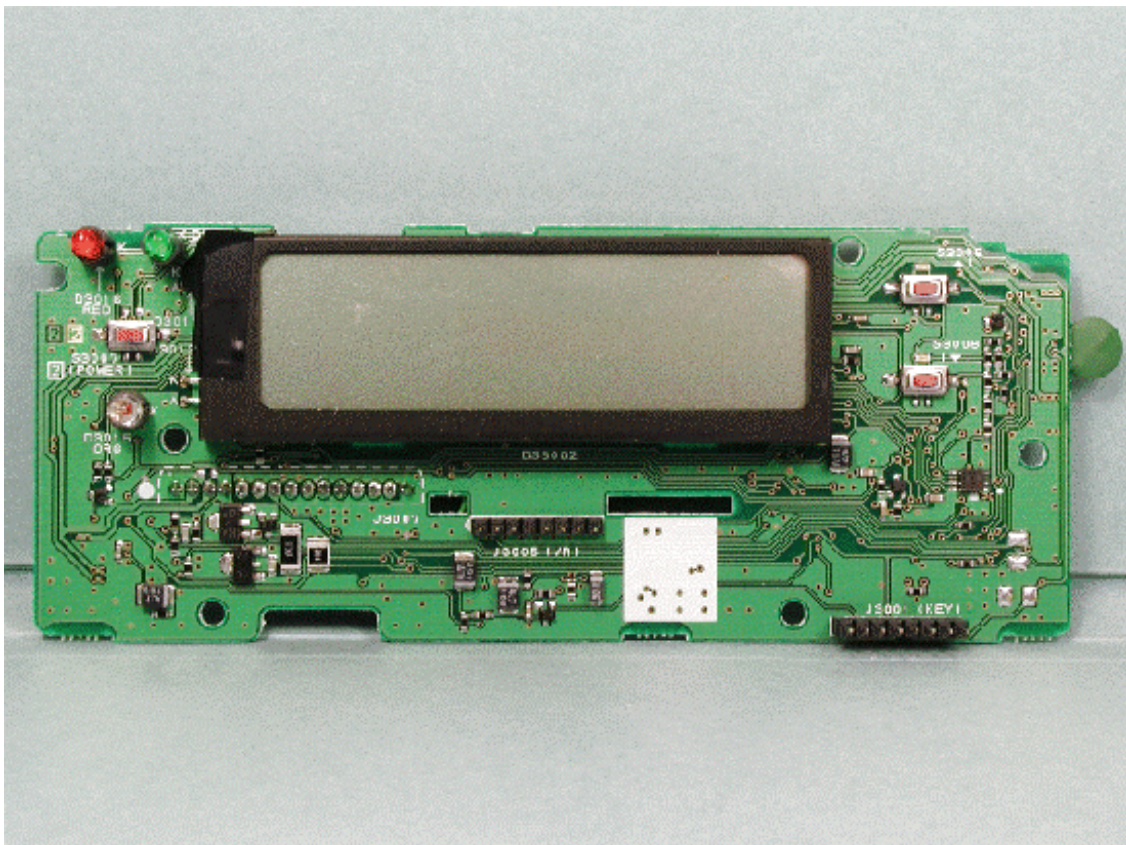




Solder side of PA-UNIT

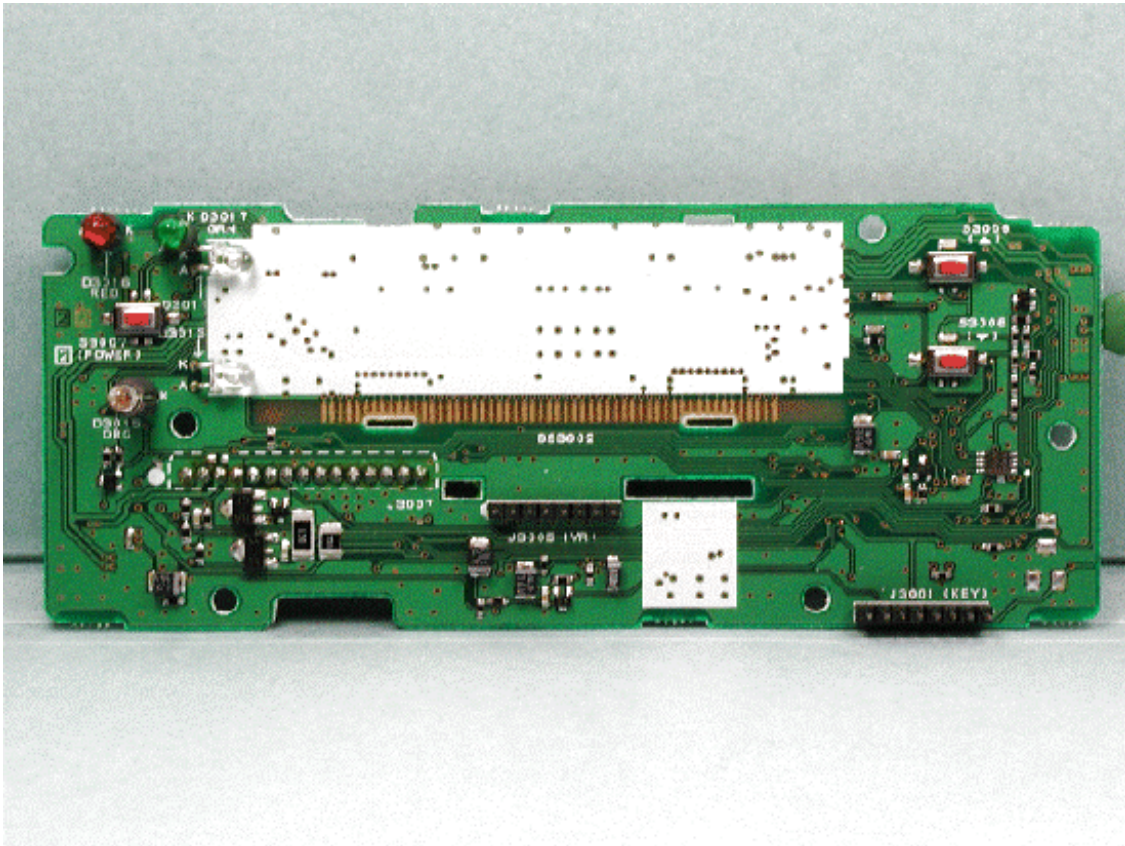


Component side of DISPLAY-UNIT with LCD

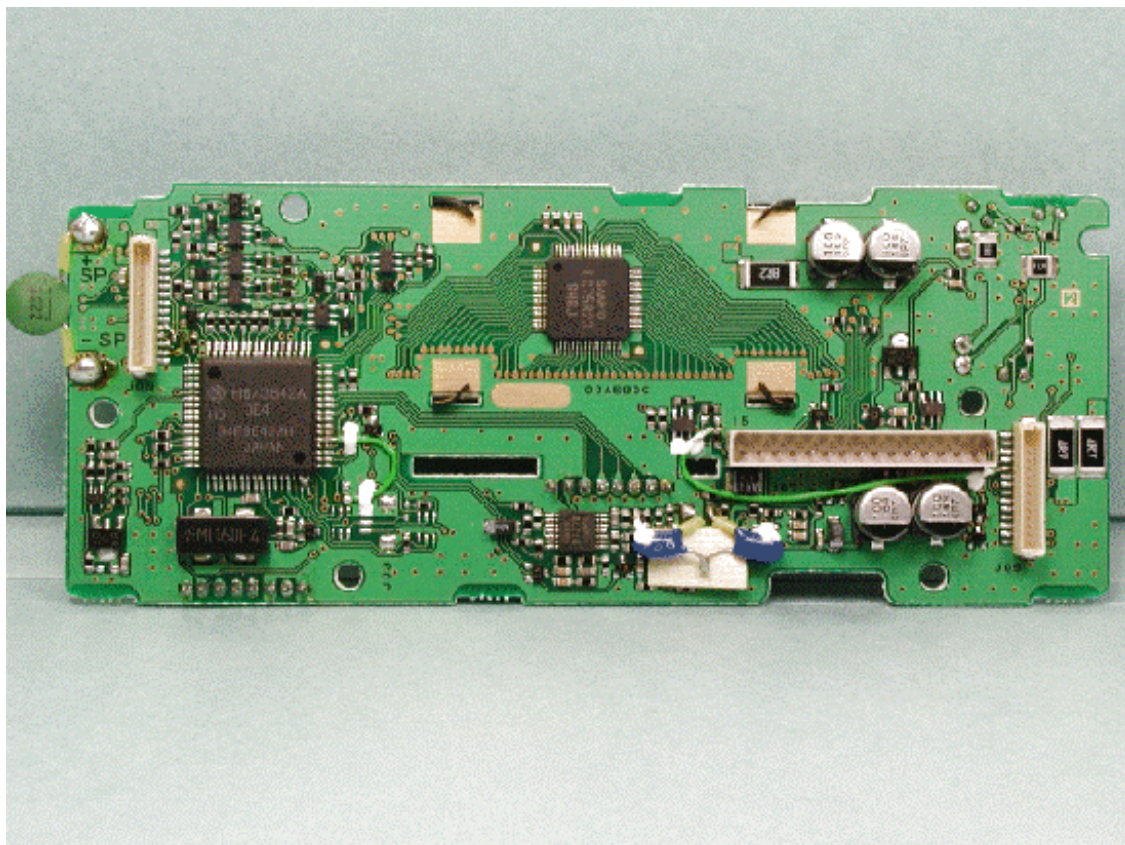




Component side of DISPLAY-UNIT without LCD



Solder side of DISPLAY-UNIT

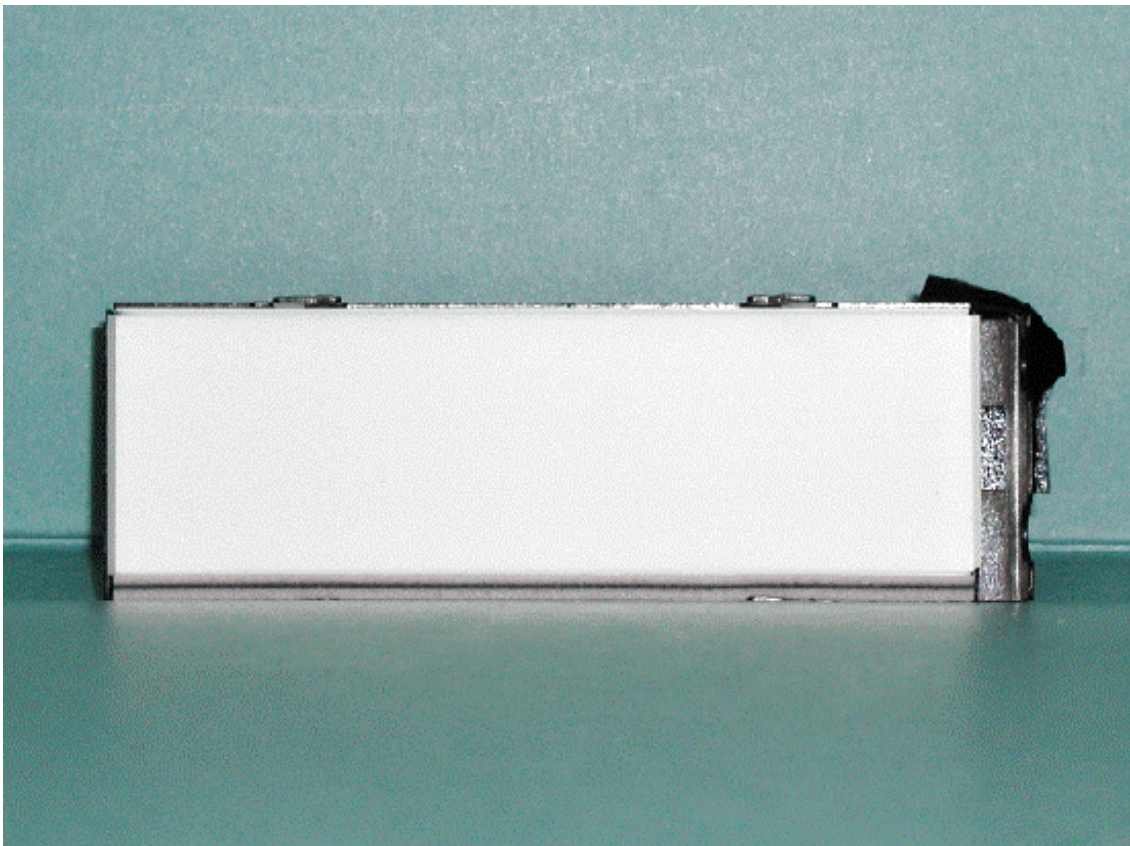




Front of LCD

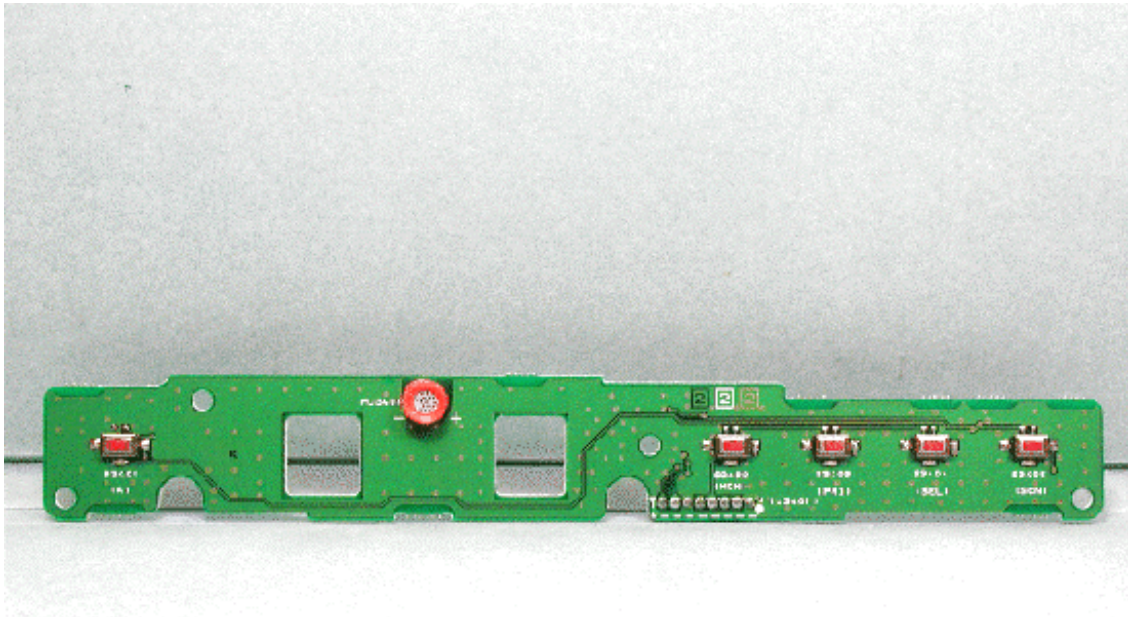


Back of LCD

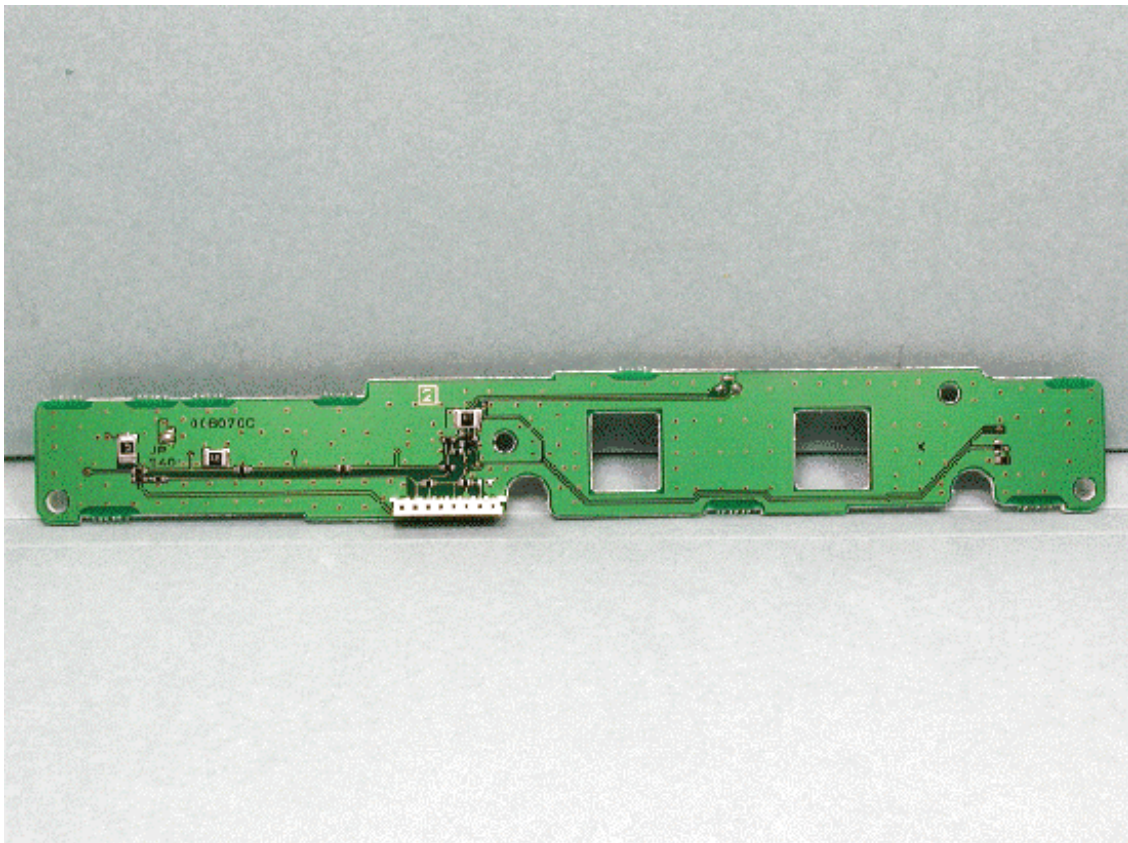




Component side of KEY-UNIT

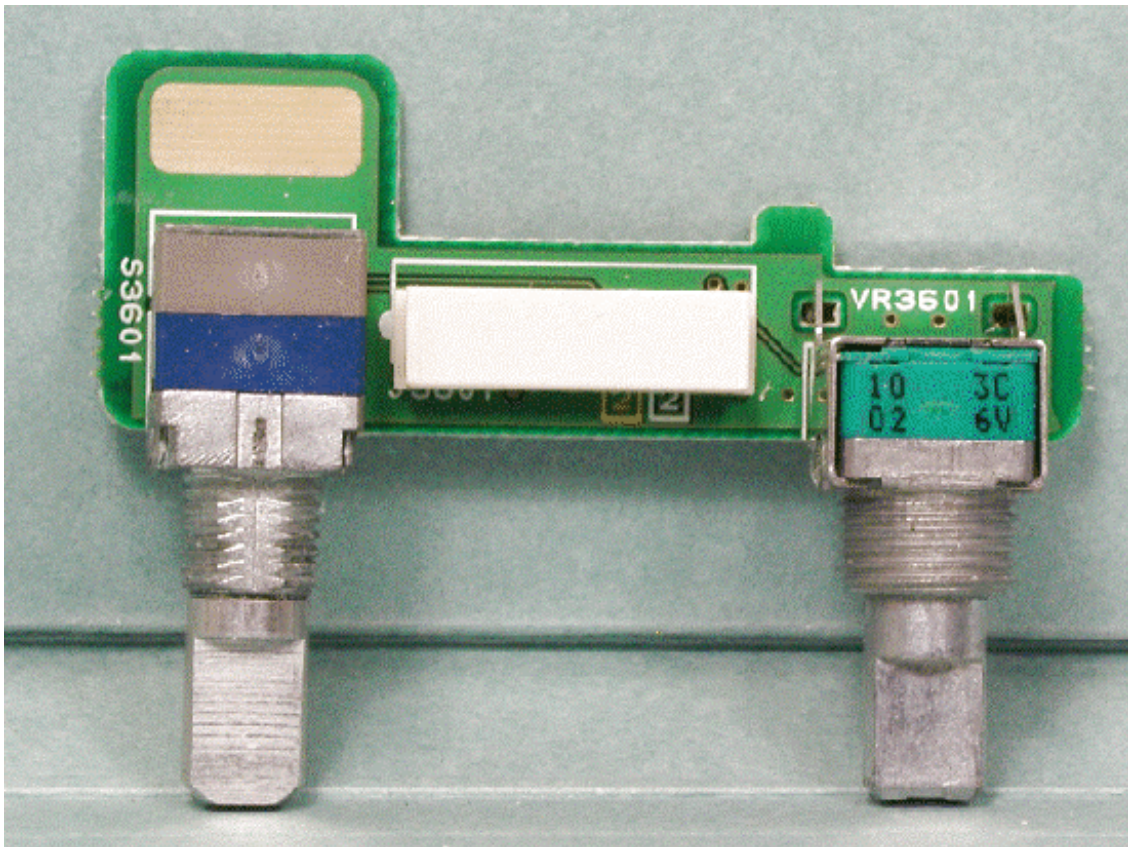


Solder side of KEY-UNIT

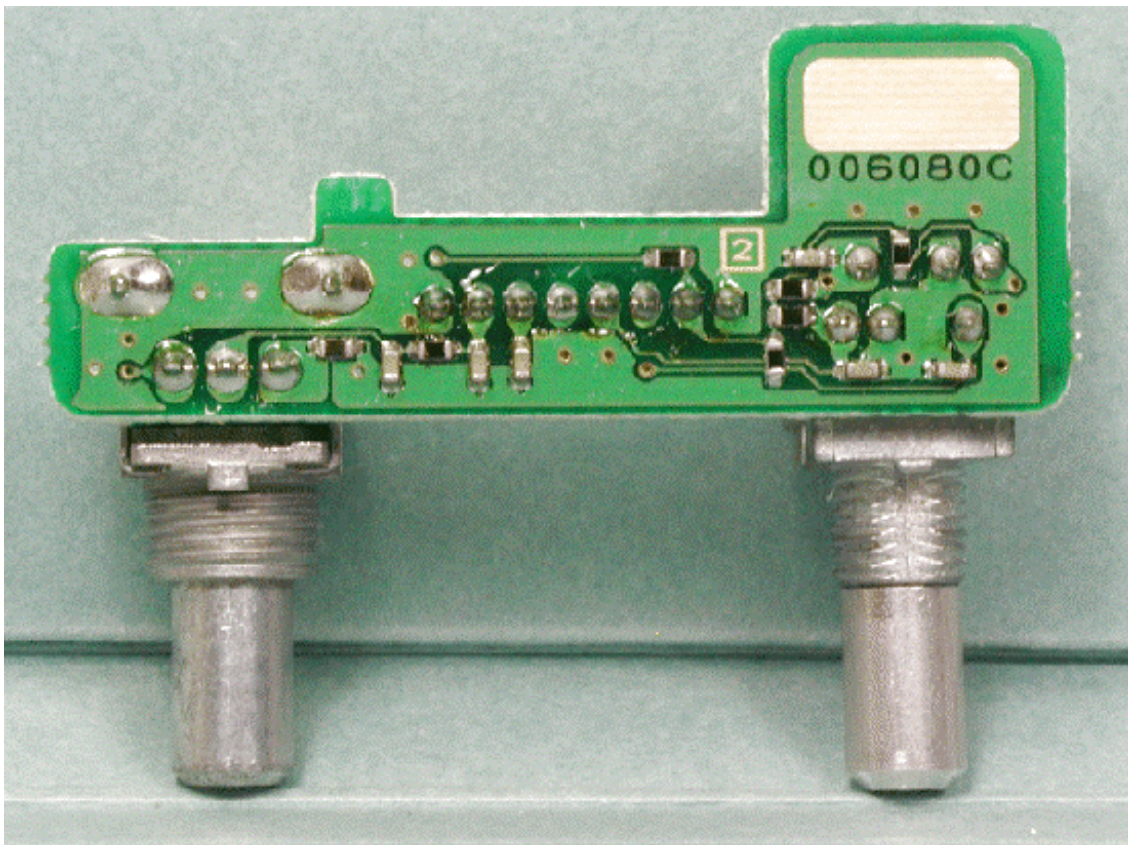




Component side of VR-UNIT

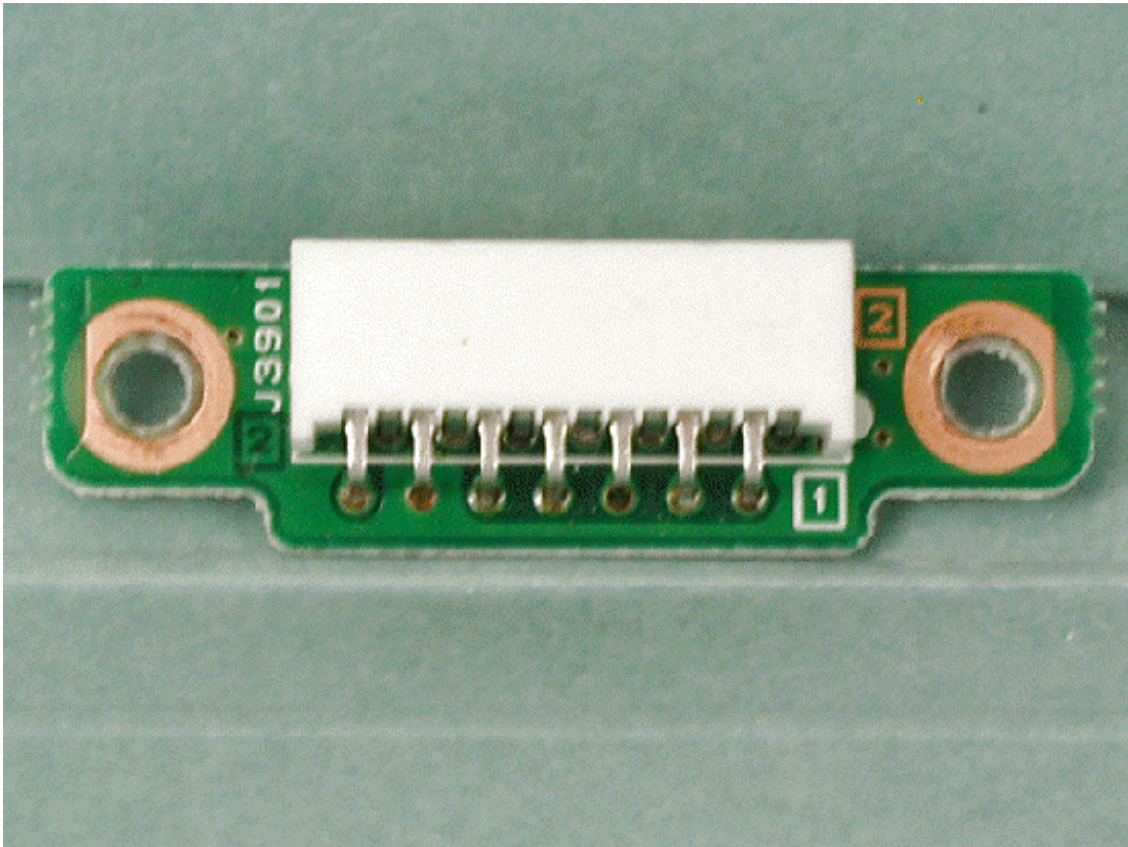


Solder side of VR-UNIT

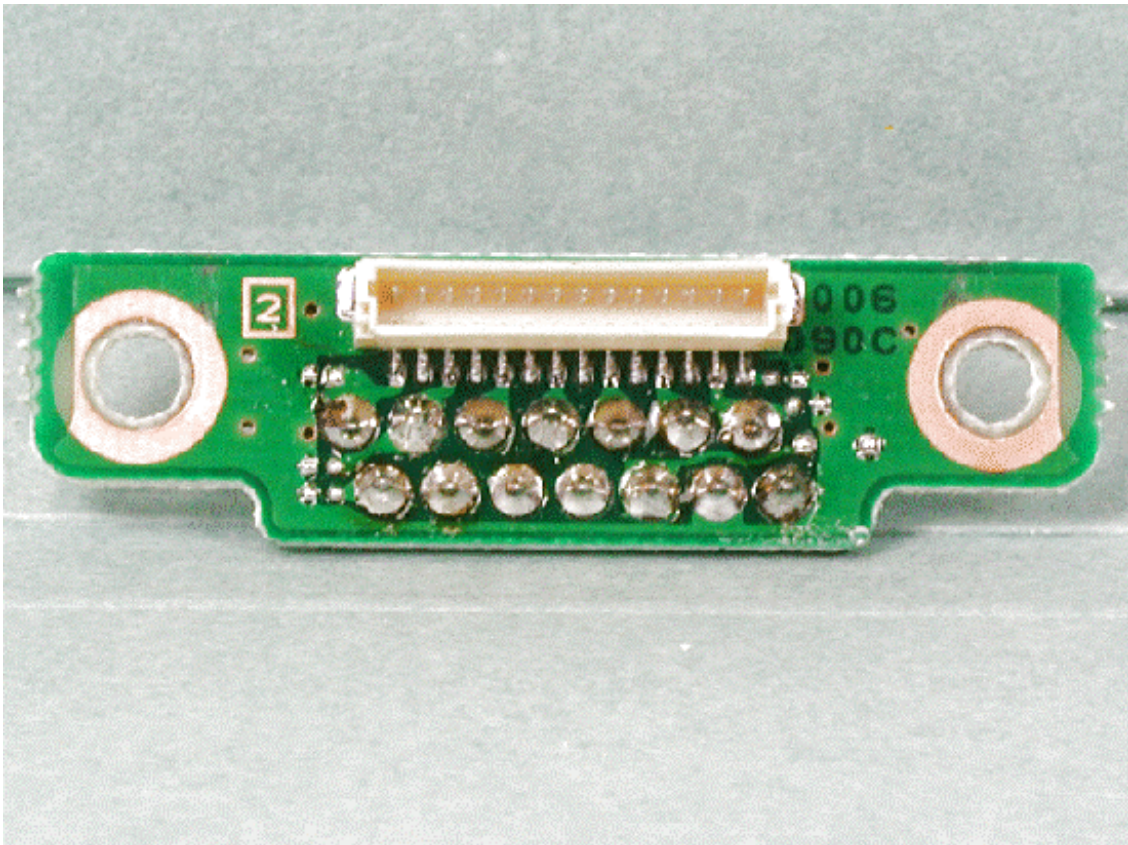




Component side of MIC-CONN-UNIT

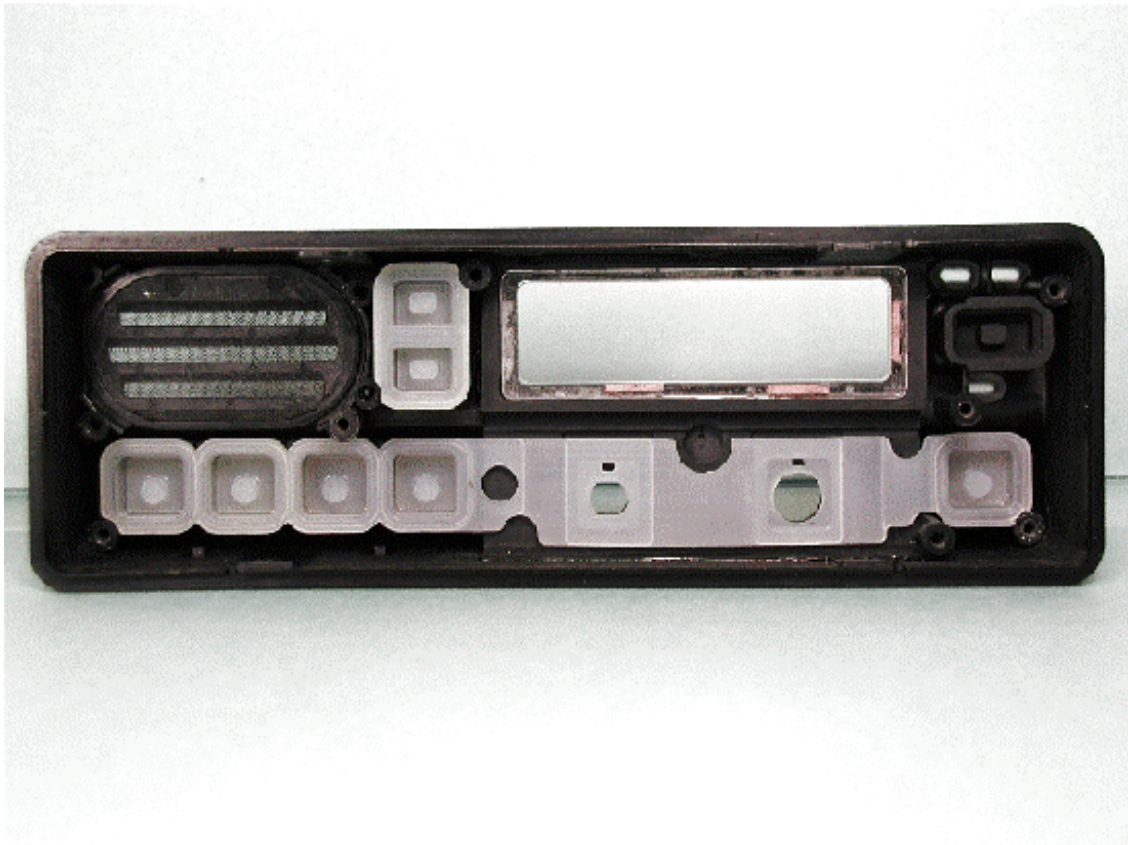


Solder side of MIC-CONN-UNIT

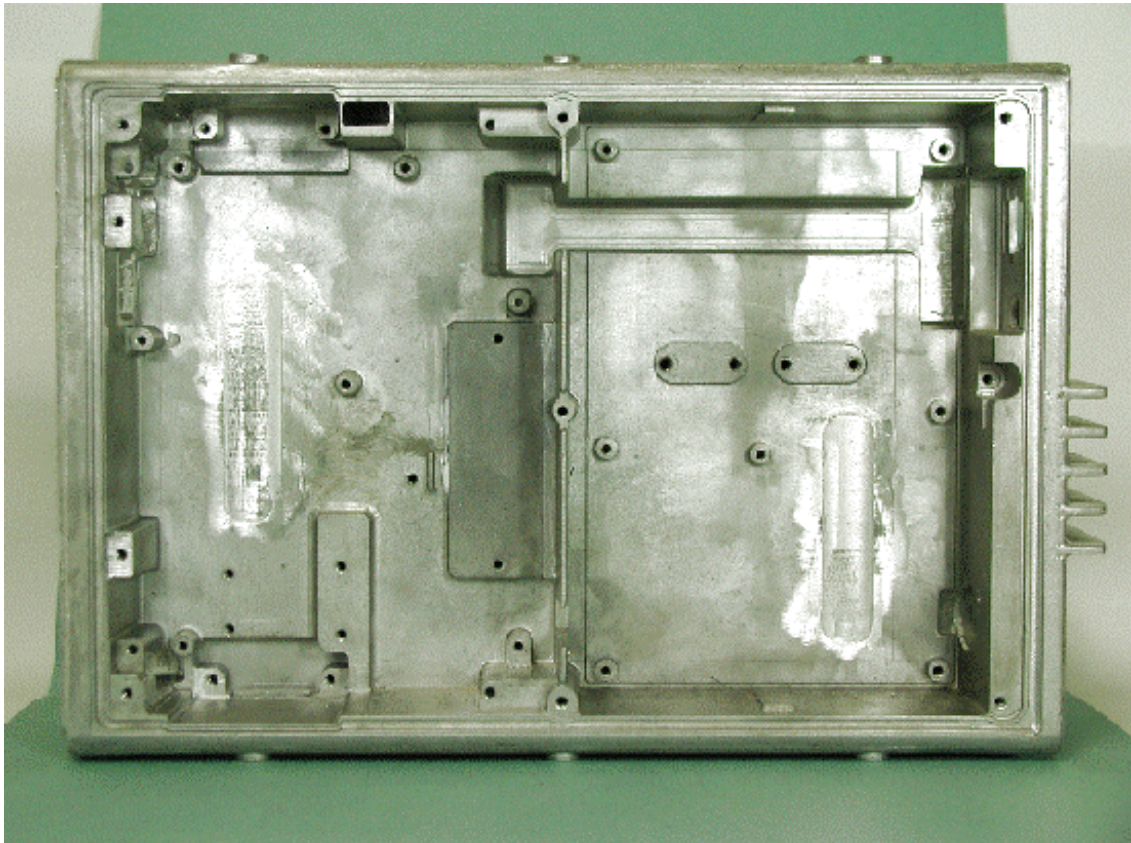




Inside of front panel

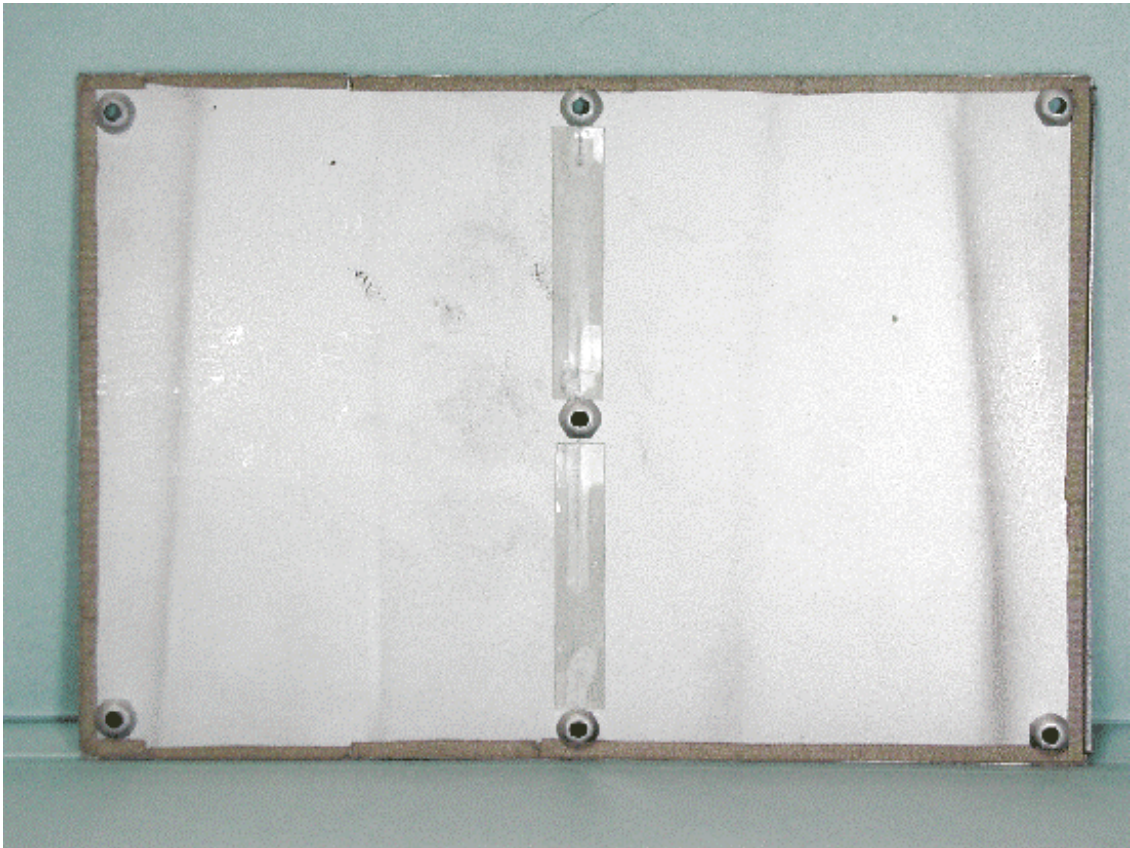


Inside of chassis





Inside of top plate



Inside of microphone

