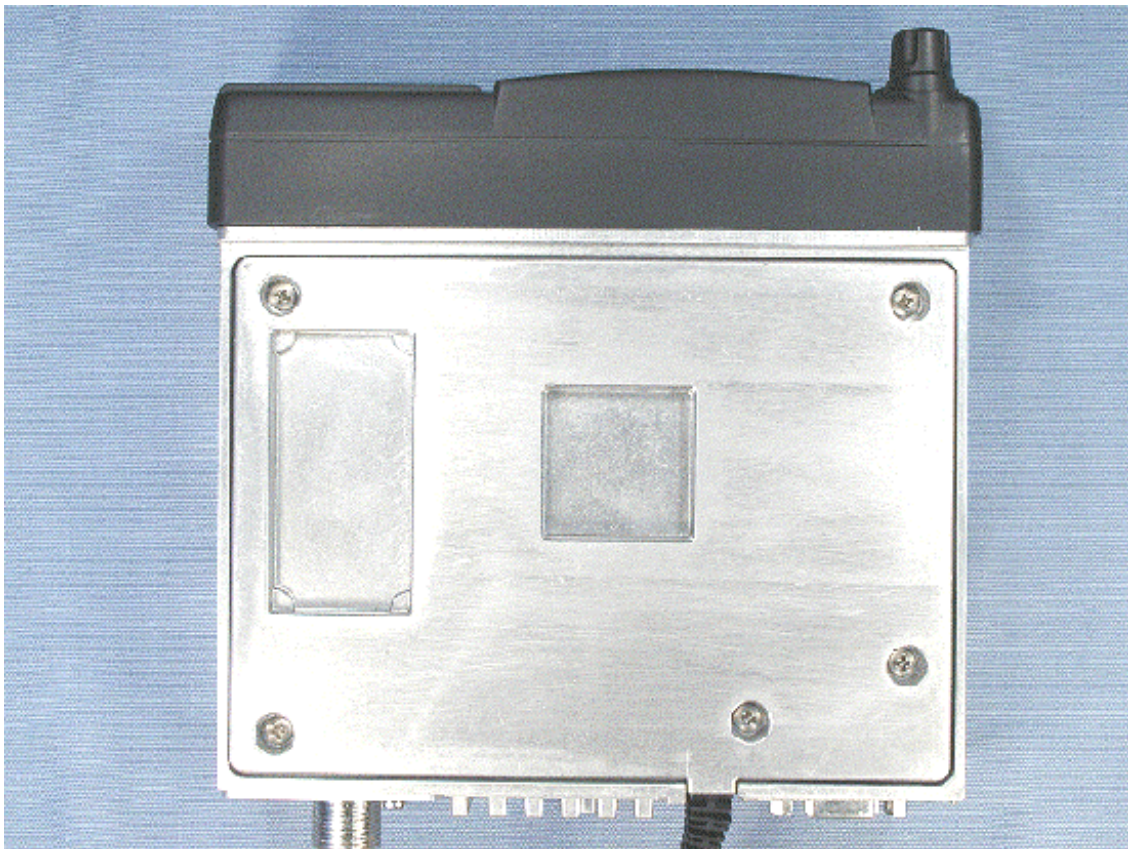
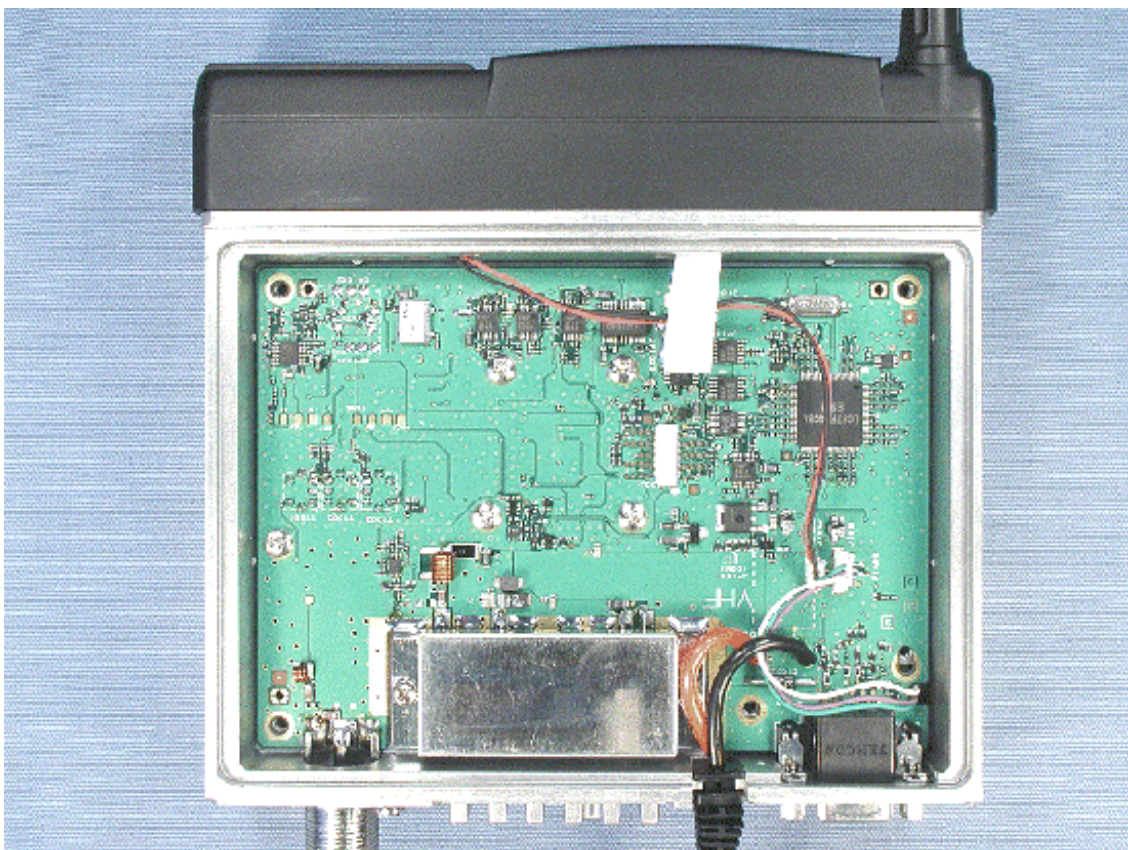


Removed top cover

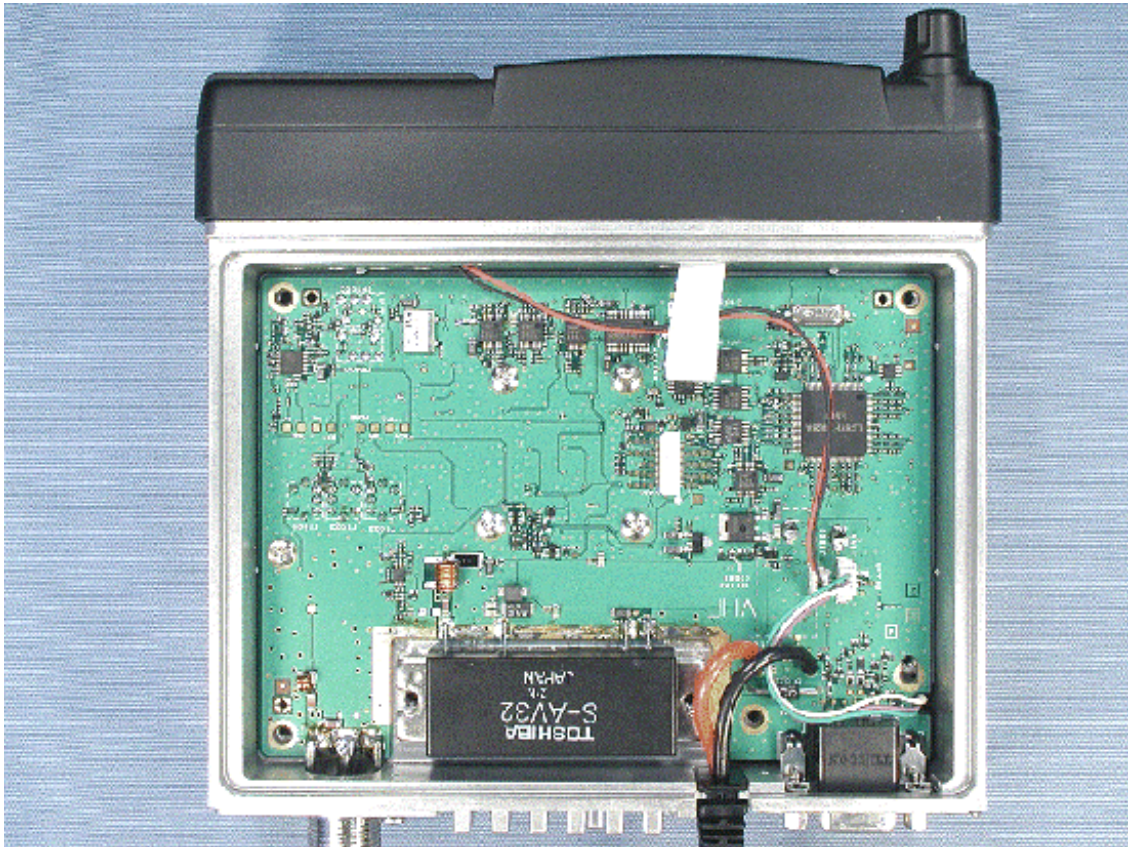


Inside of EUT with shield case

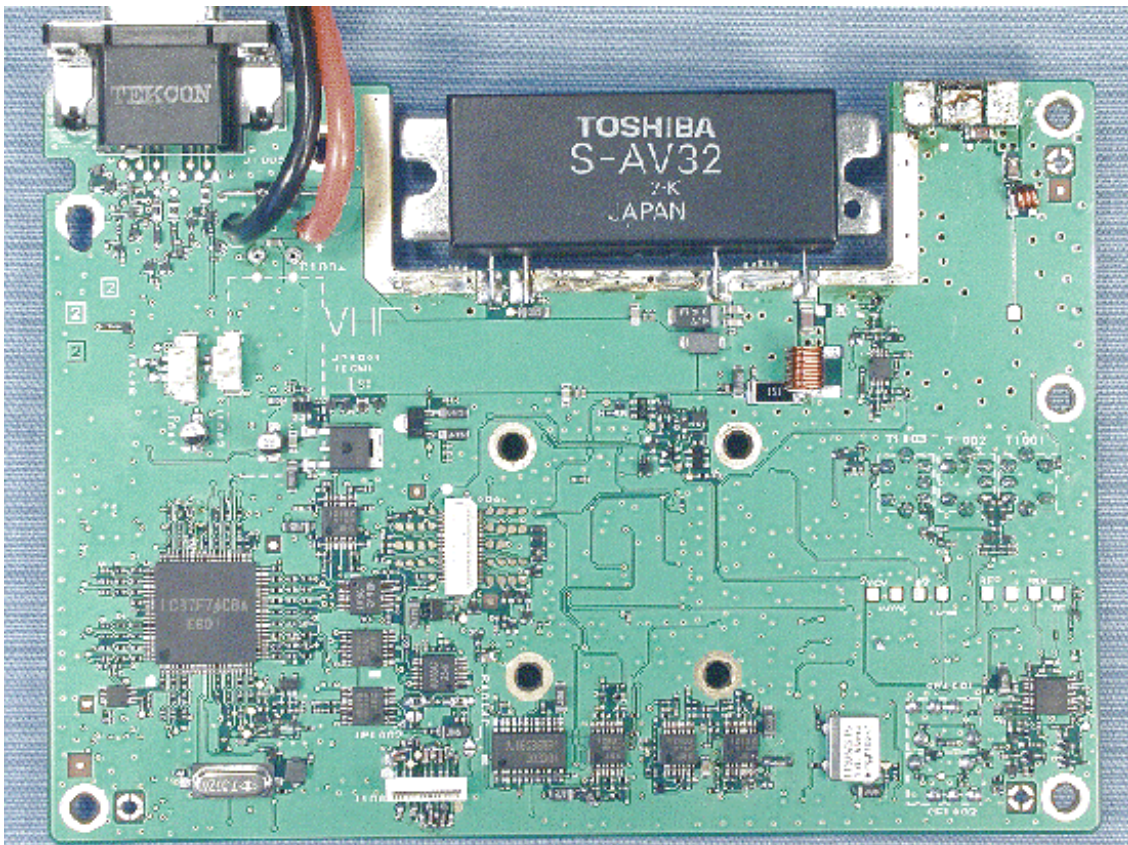




Inside of EUT without shield case

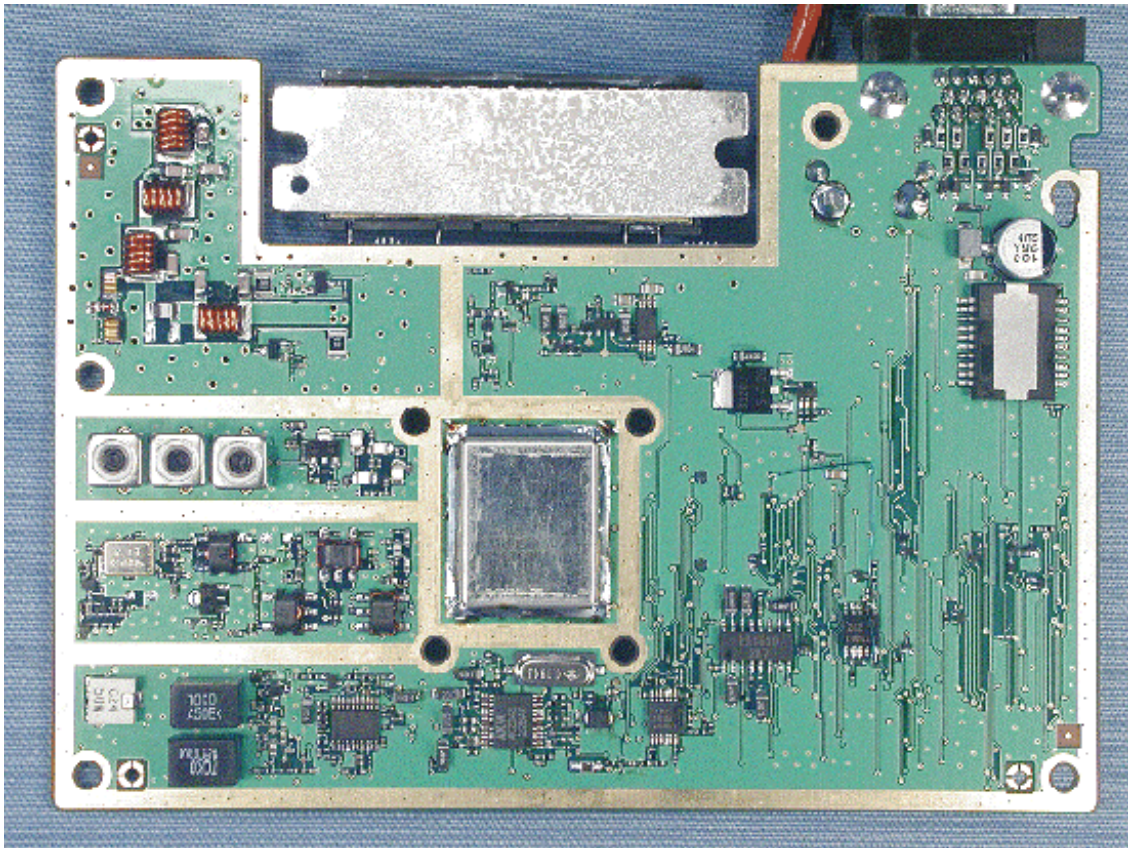


Side-A of RF-UNIT

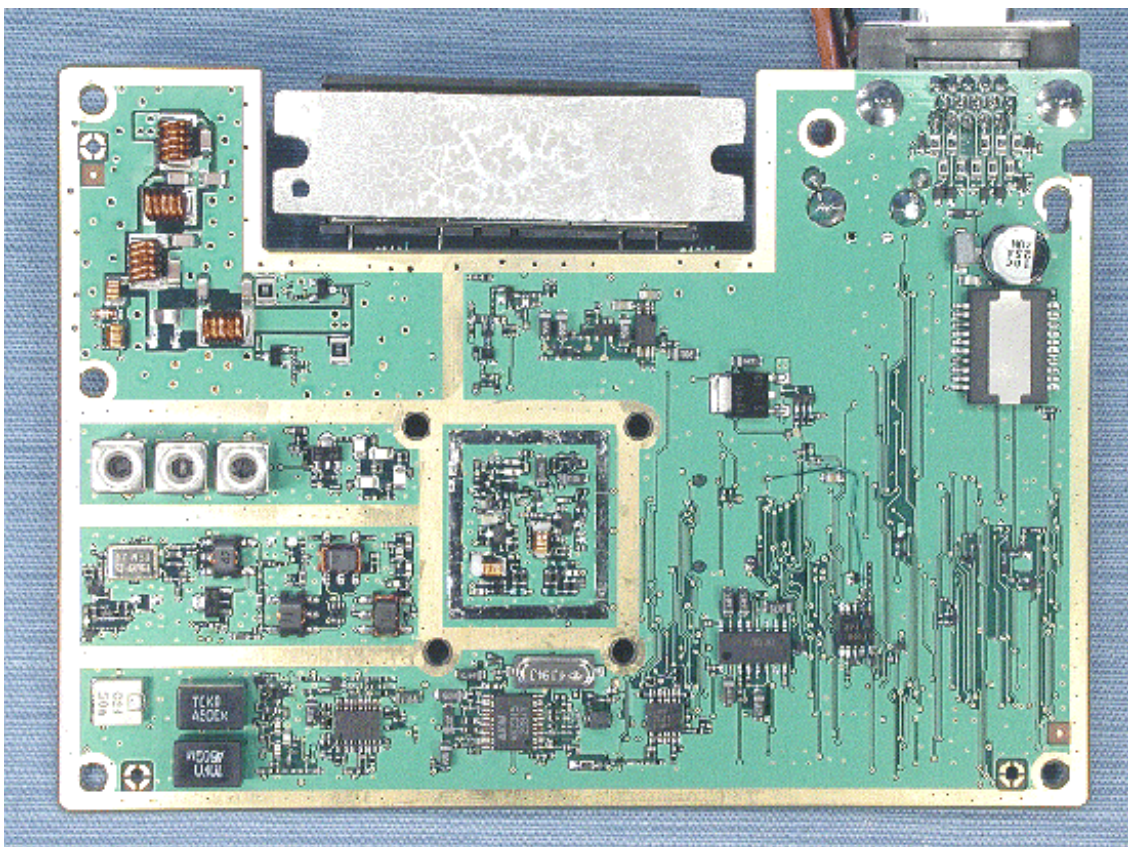




Side-B of RF-UNIT with shield case

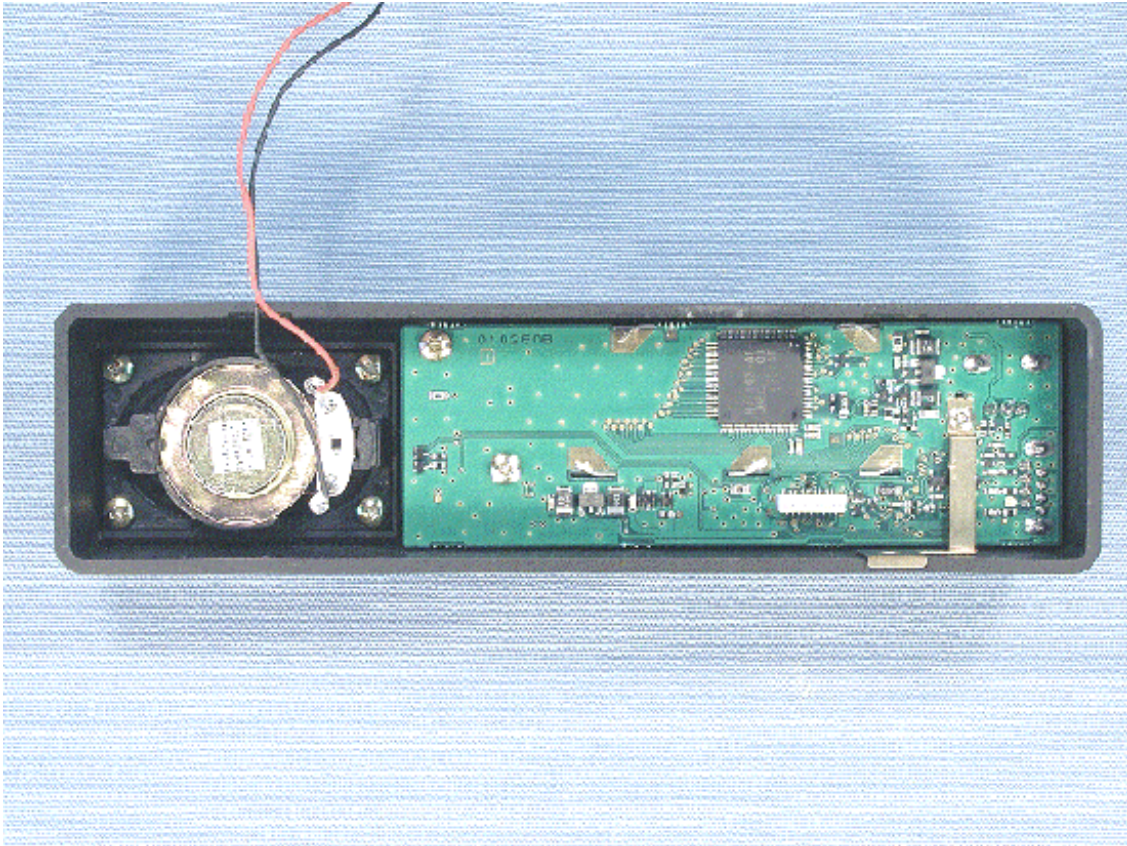


Side-B of RF-UNIT without shield case

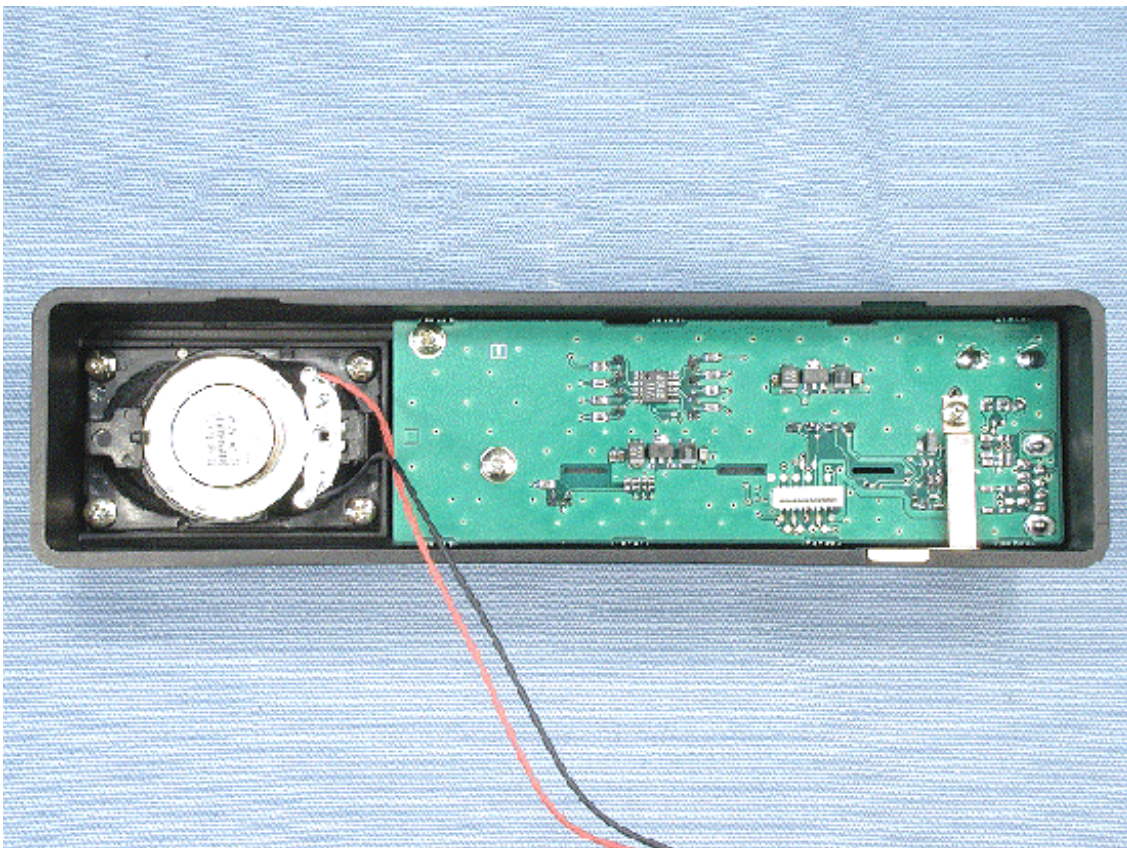




Inside of front panel with PWB (FRONT-D-UNIT)

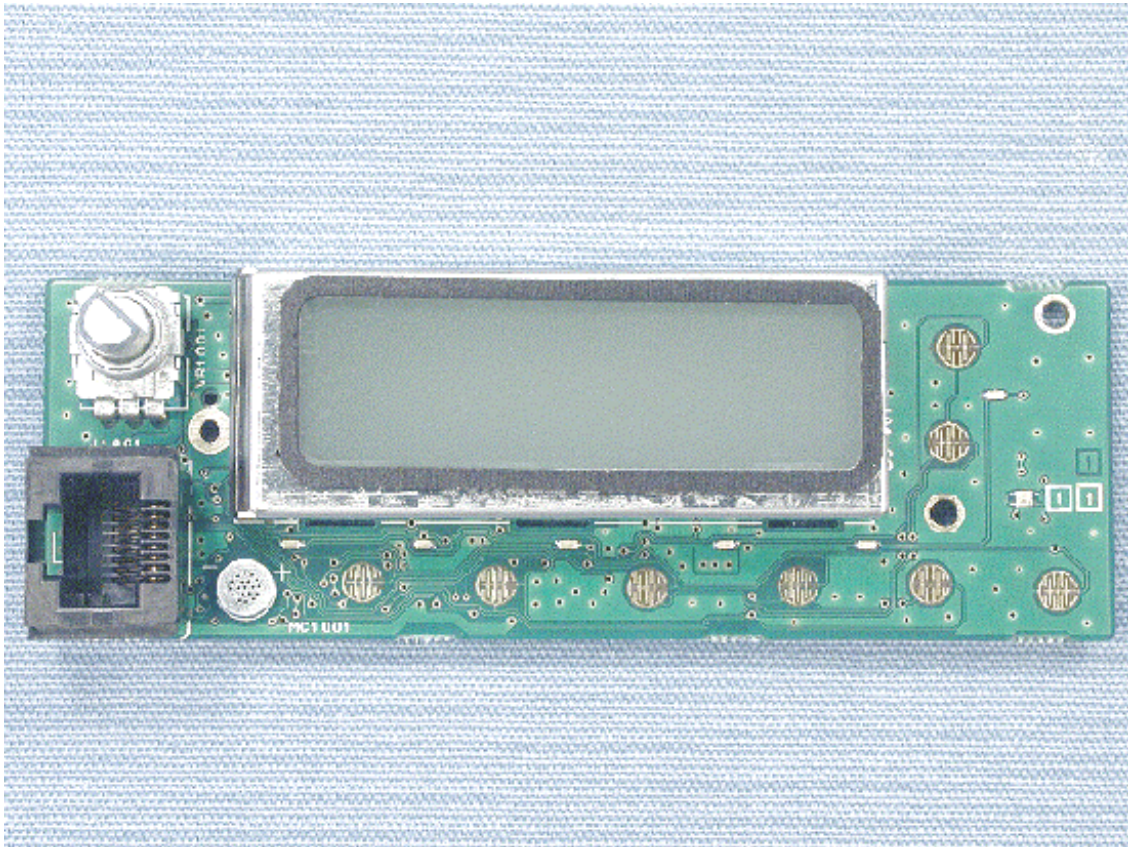


Inside of front panel with PWB (FRONT-C-UNIT)

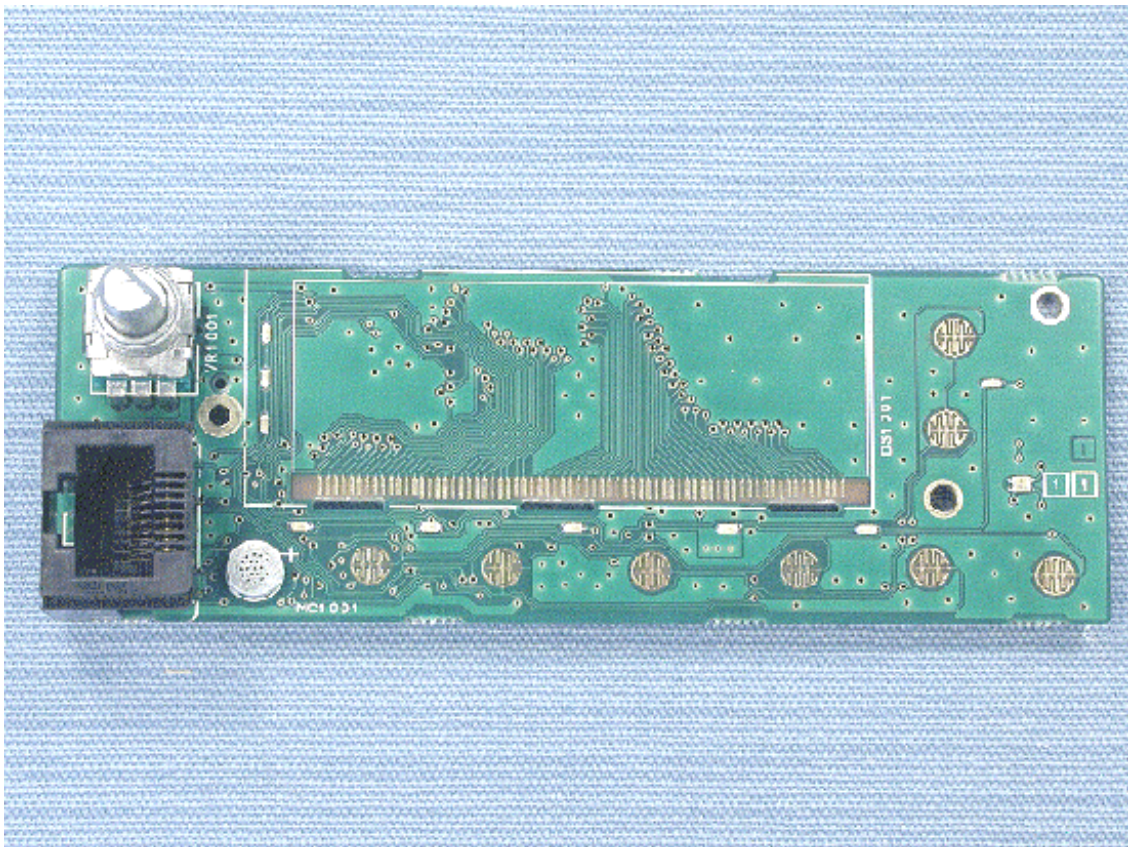




Side-A of FRONT-D-UNIT with LCD

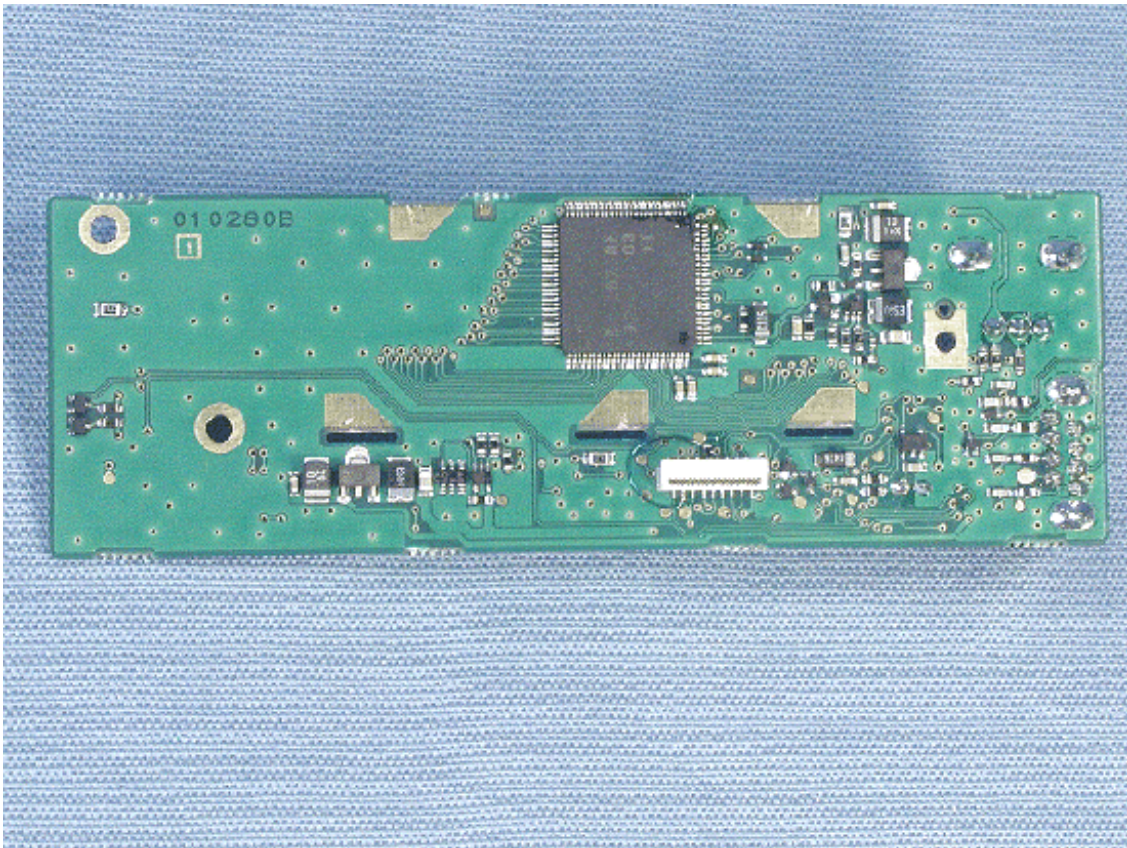


Side-A of FRONT-D-UNIT without LCD





Side-B of FRONT-D-UNIT



Front of LCD

