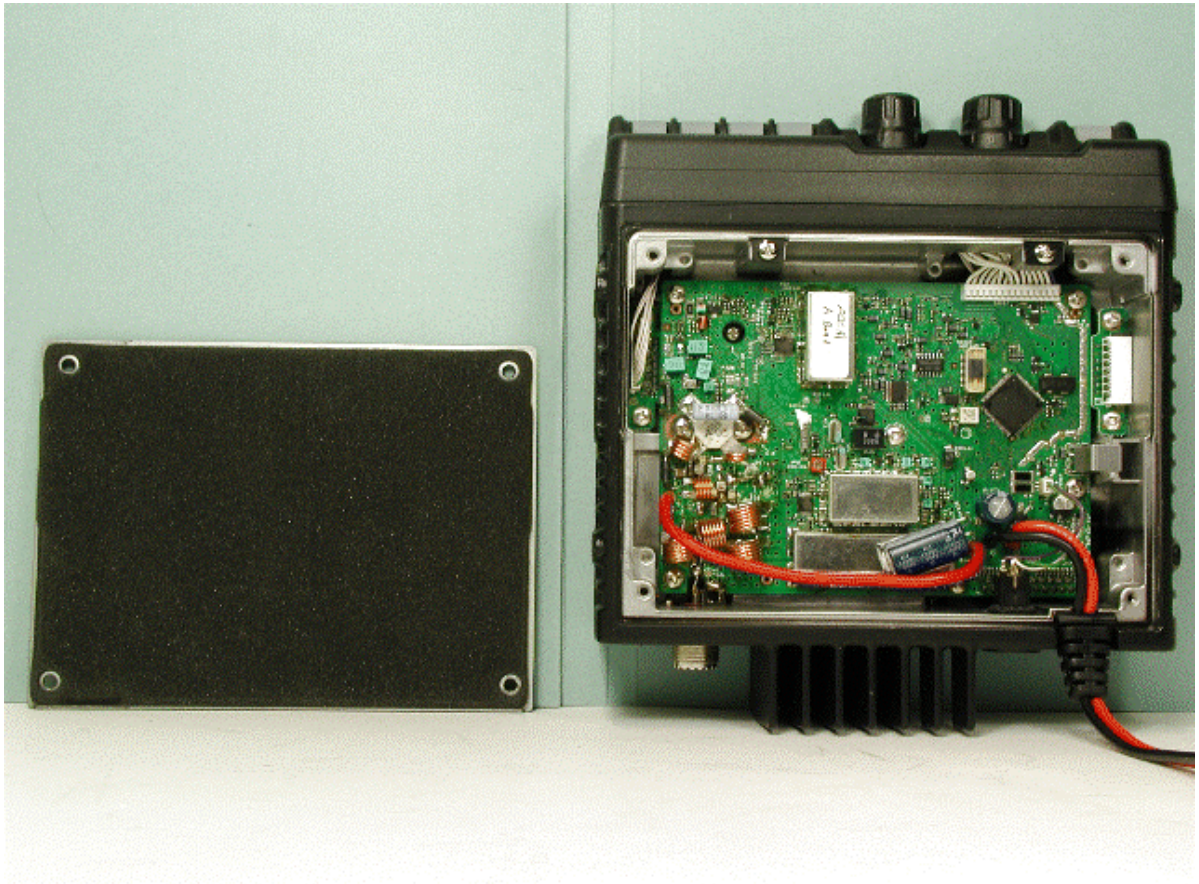
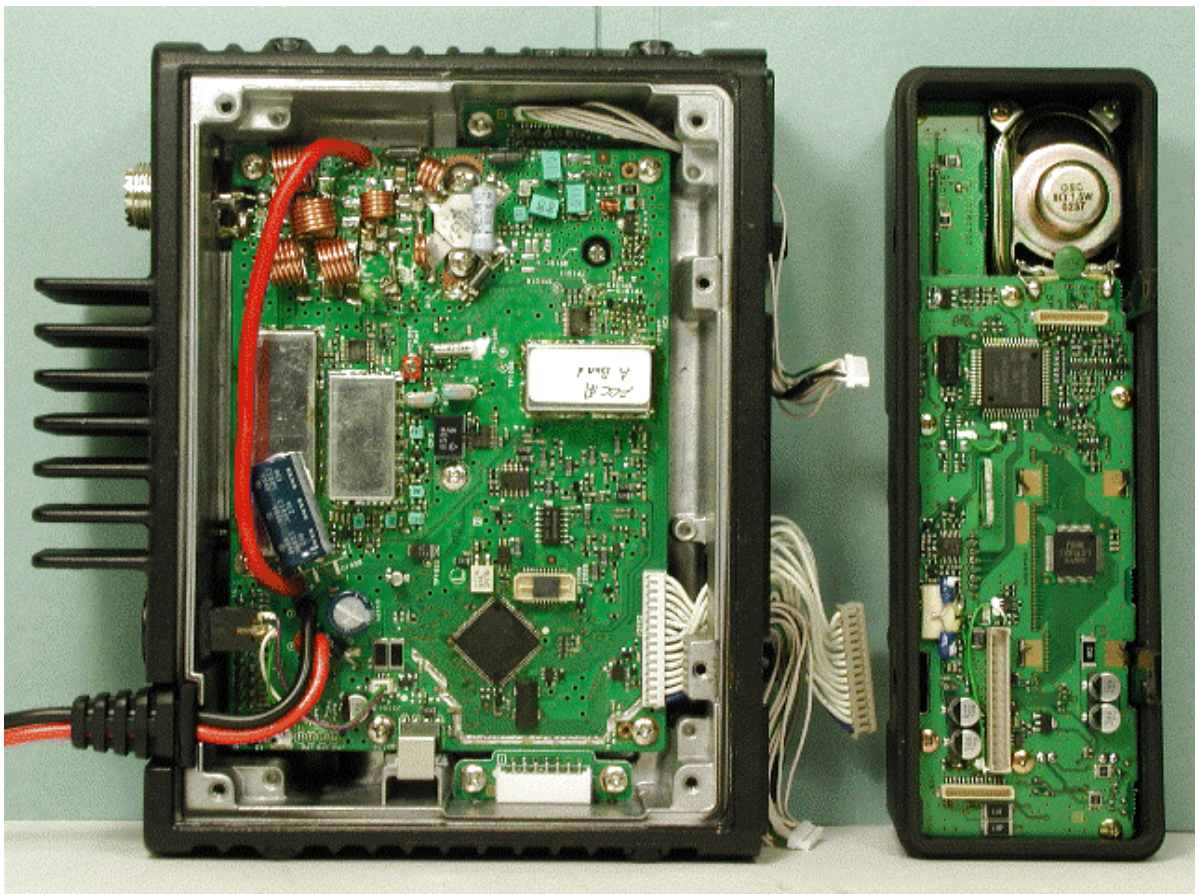


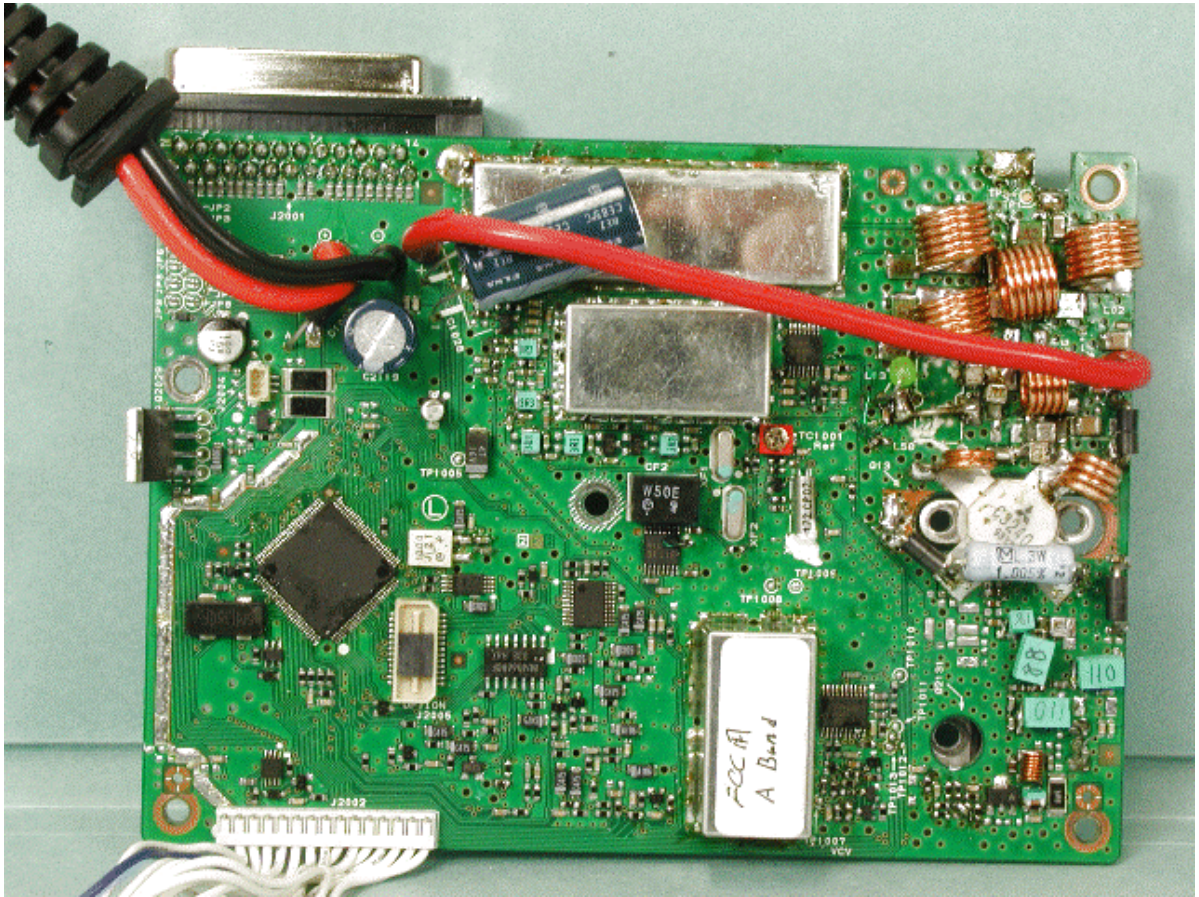
Top of EUT (Cover Opened)



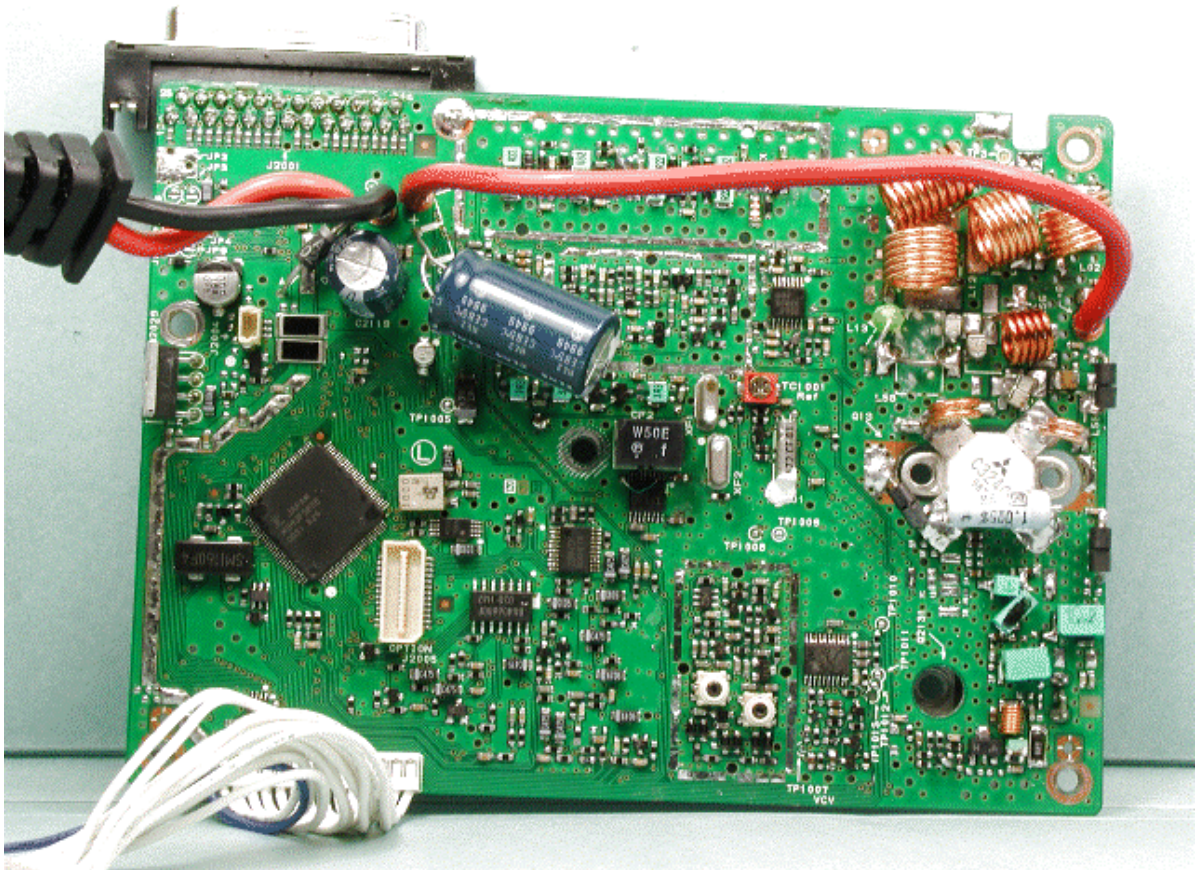
Top of EUT (Panel Opened)



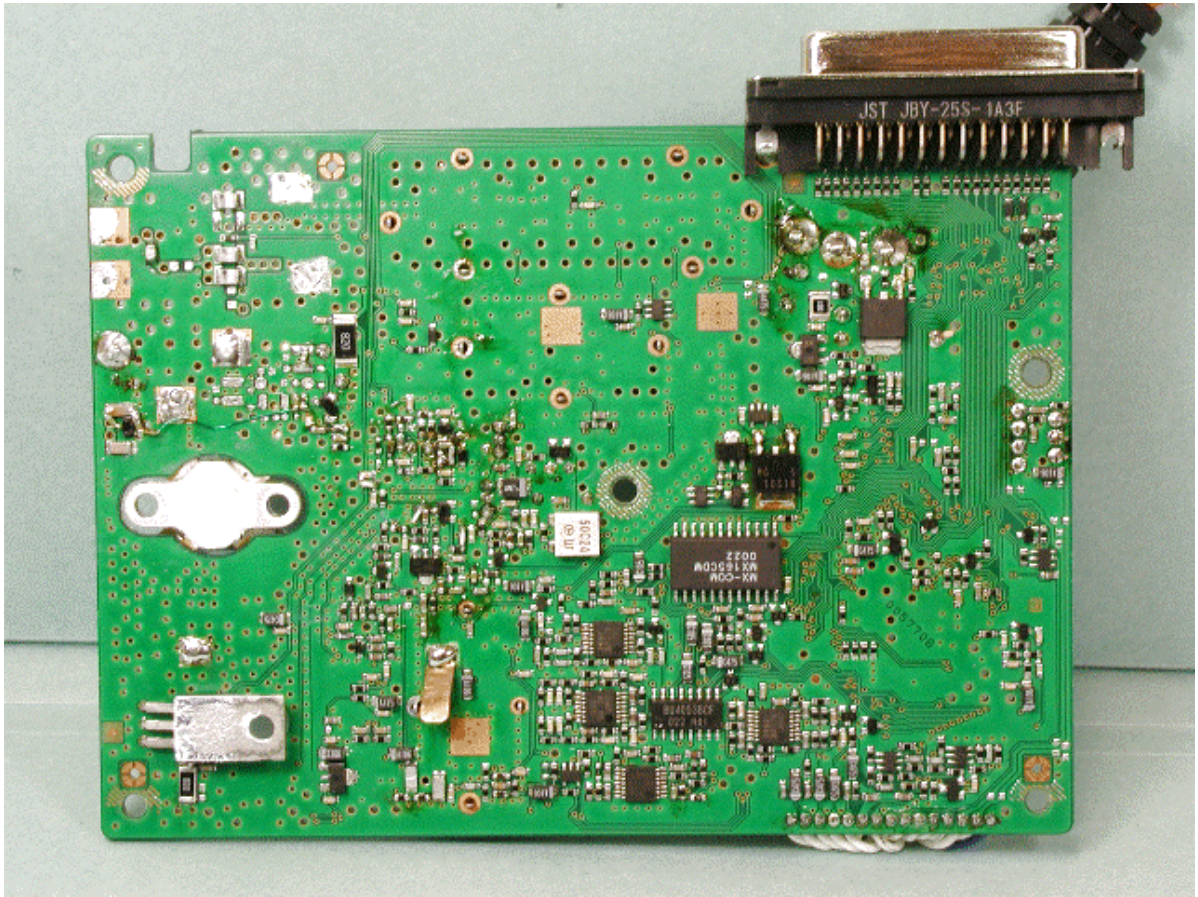
Component Side of MAIN-UNIT



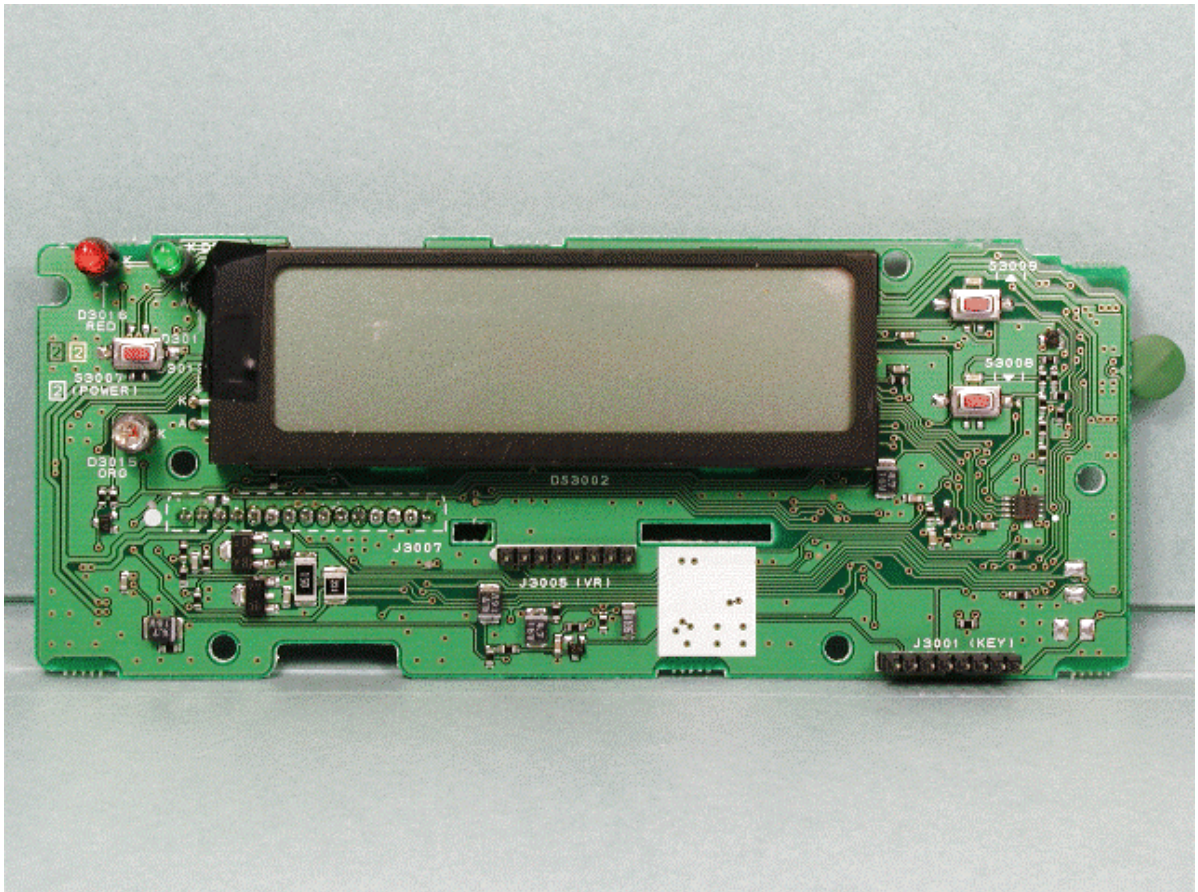
Component Side of MAIN-UNIT without Shield Cases



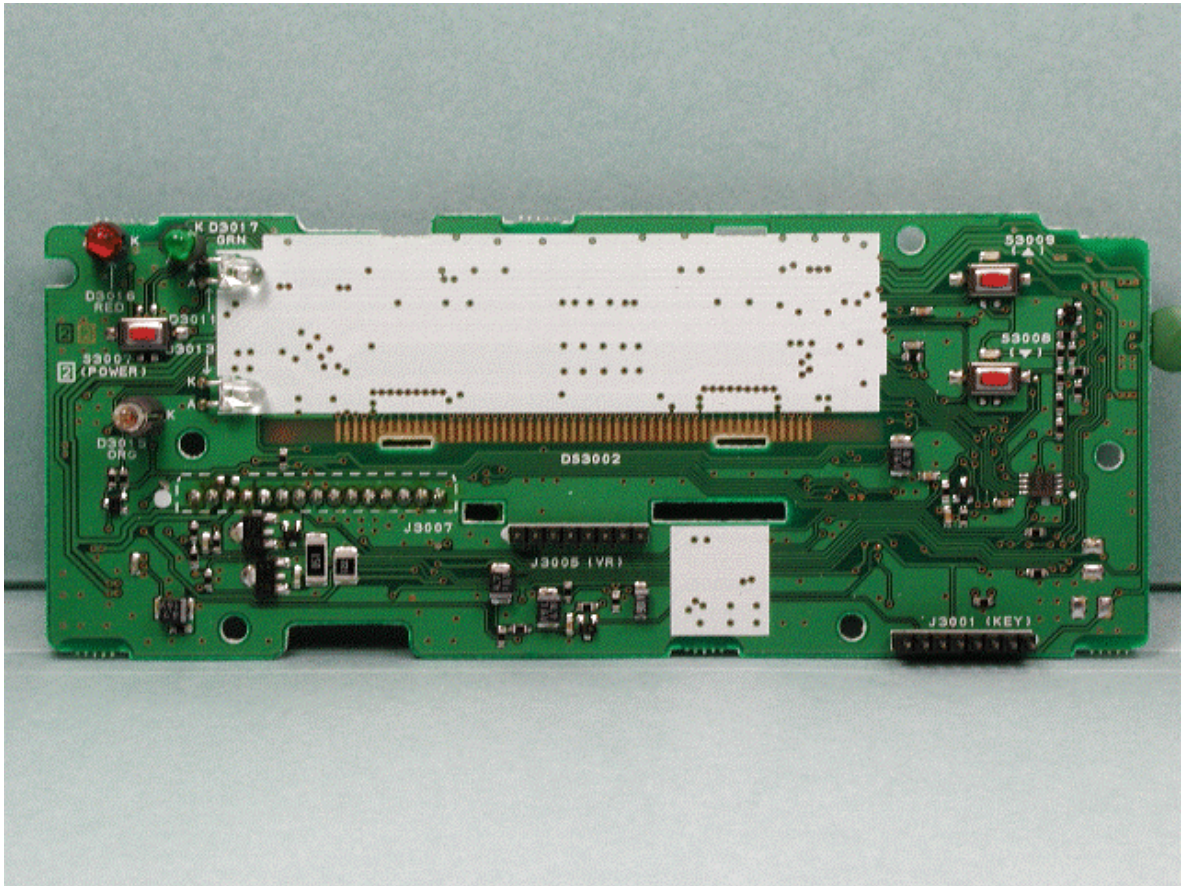
Solder Side of MAIN-UNIT



Solder Side of DISPLAY-UNIT



Solder Side of DISPLAY-UNIT without LCD



Component Side of DISPLAY-UNIT

