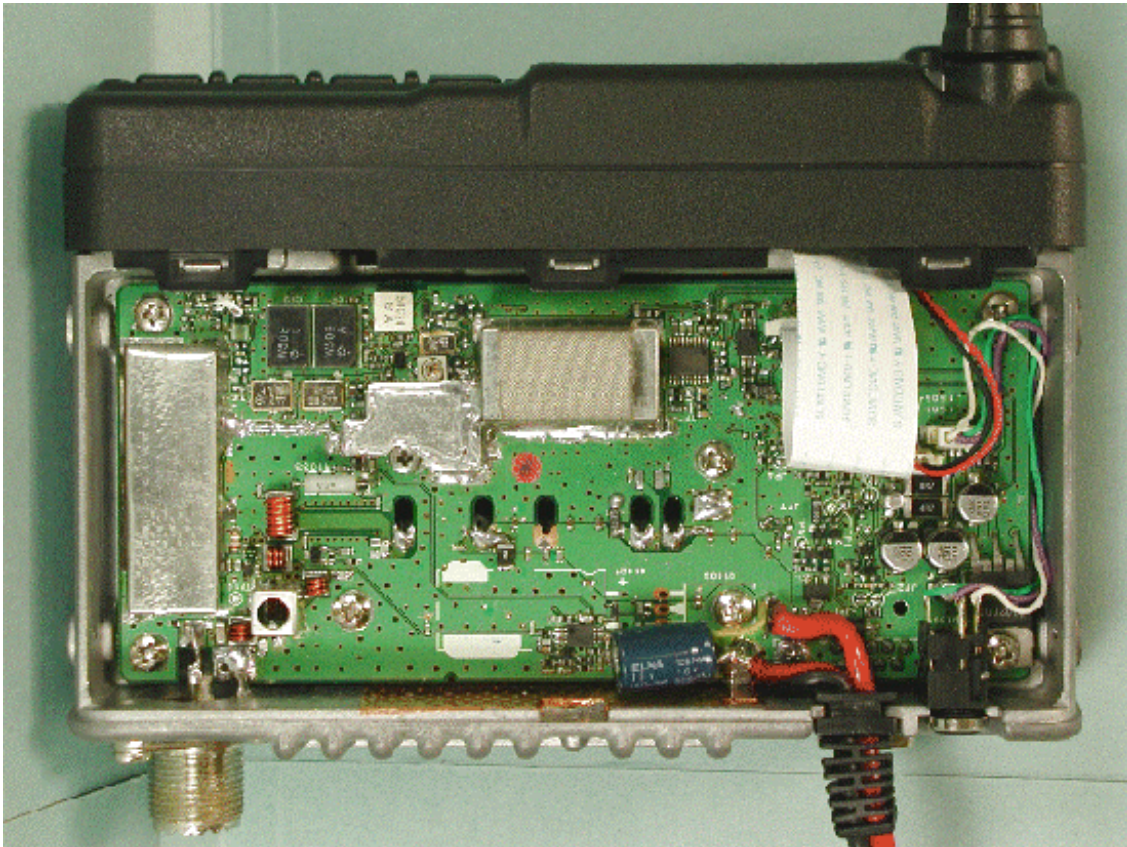
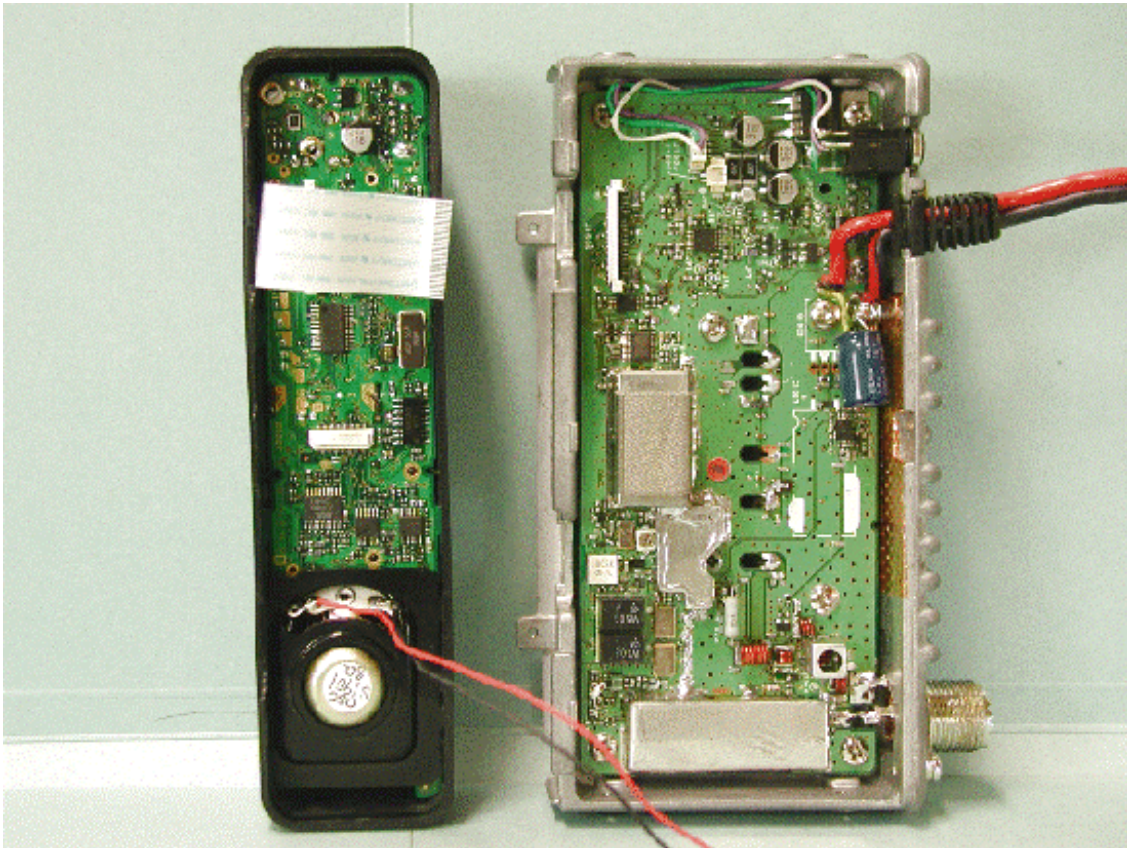


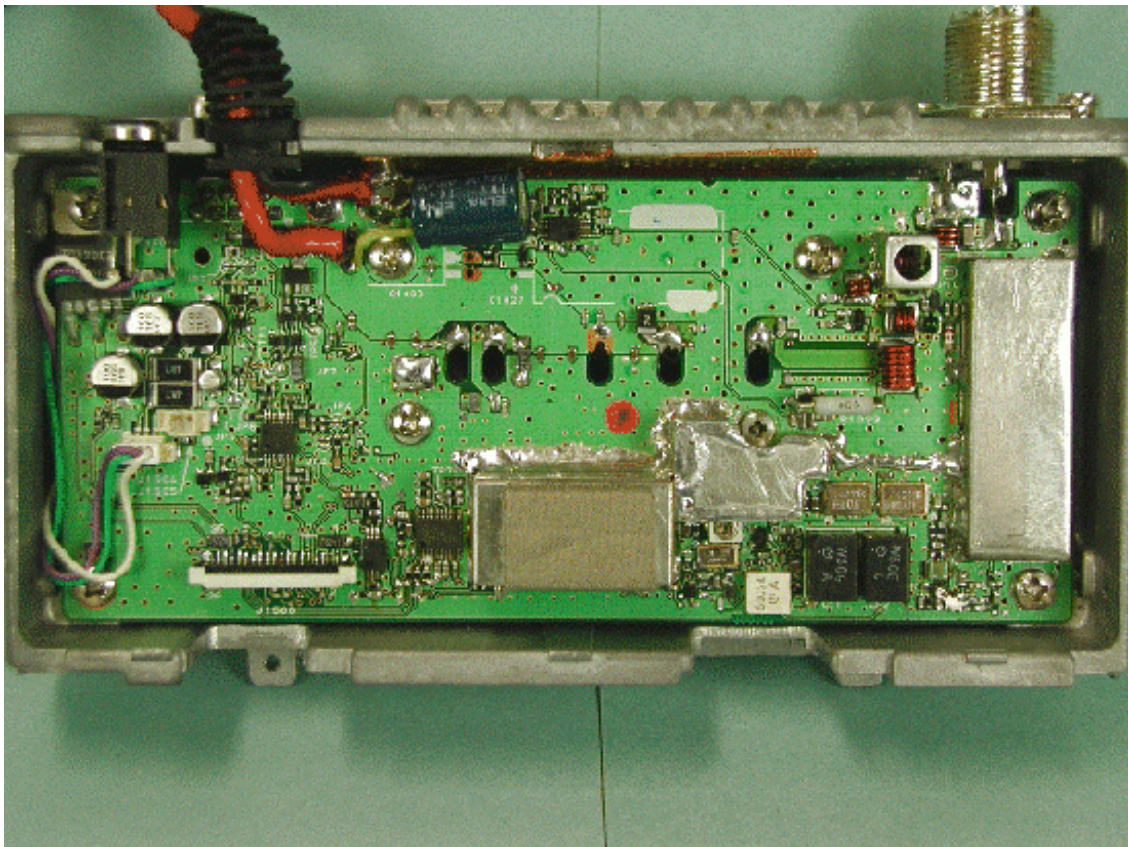
Inside of EUT



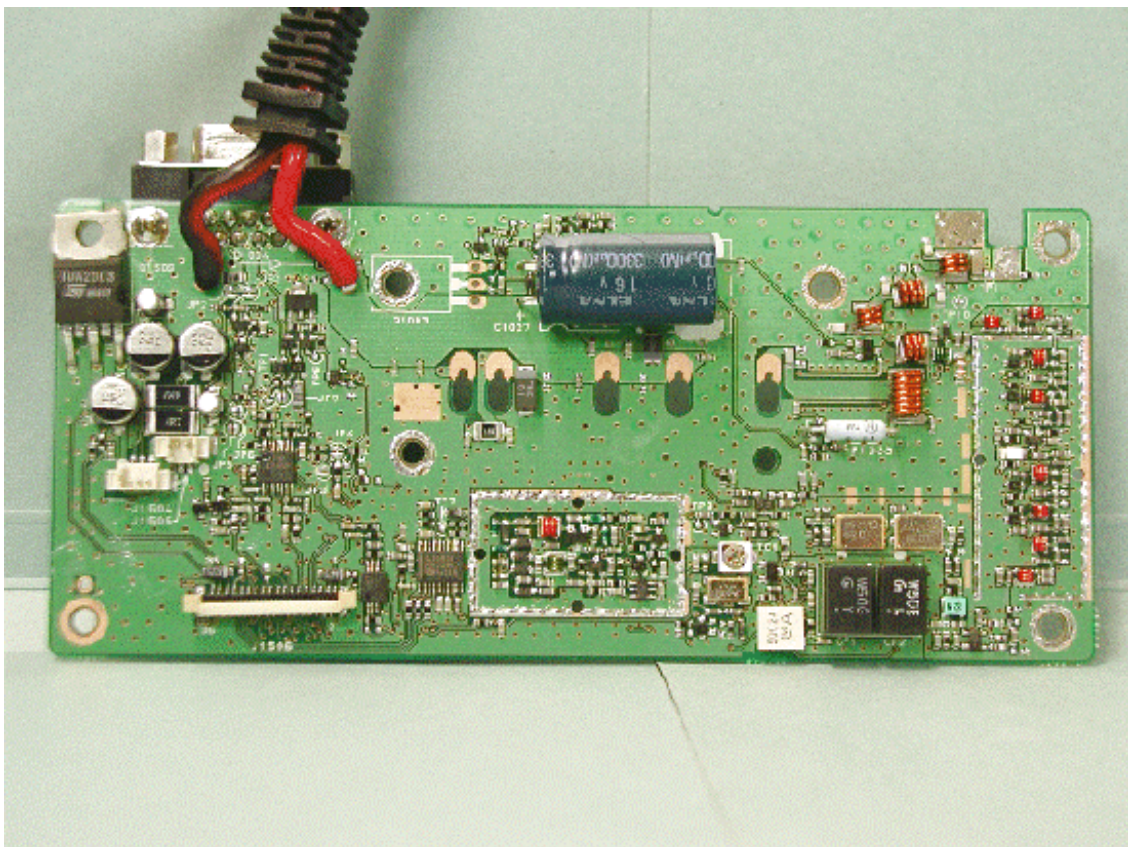
Inside of EUT



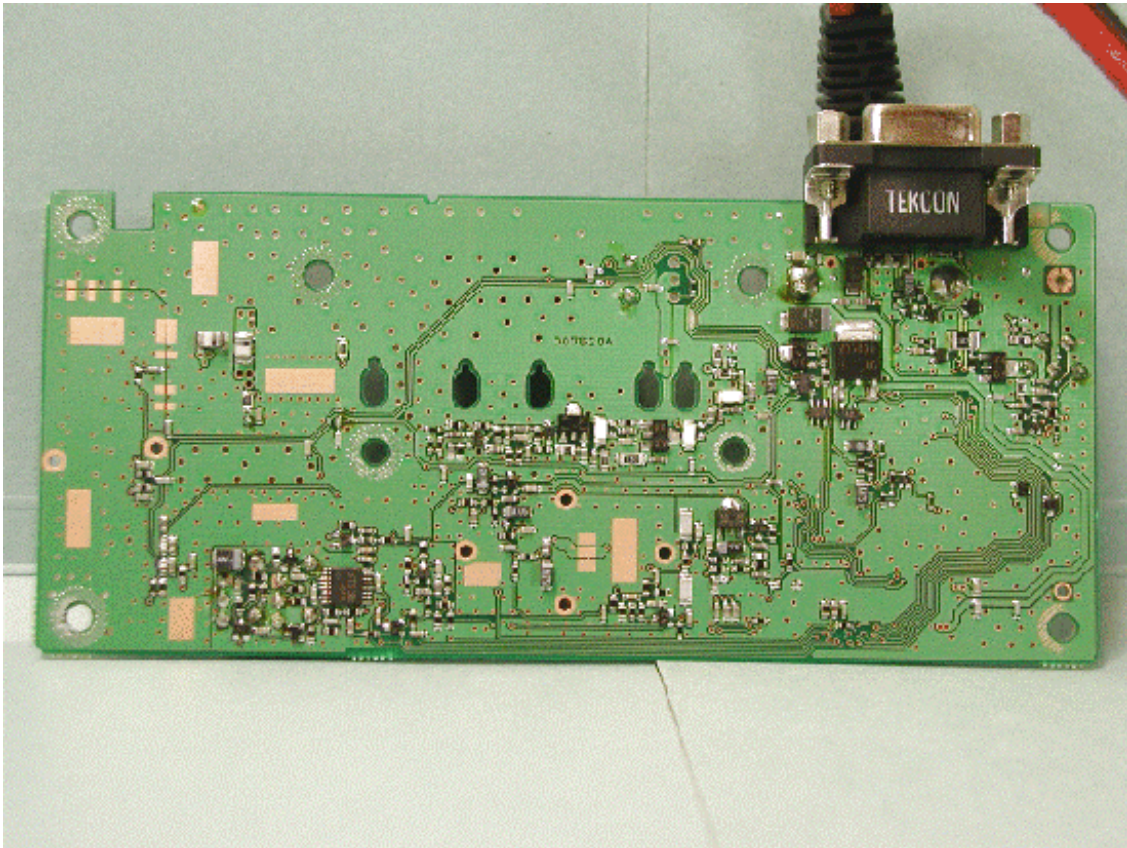
Component side of RF-UNIT with shield cases



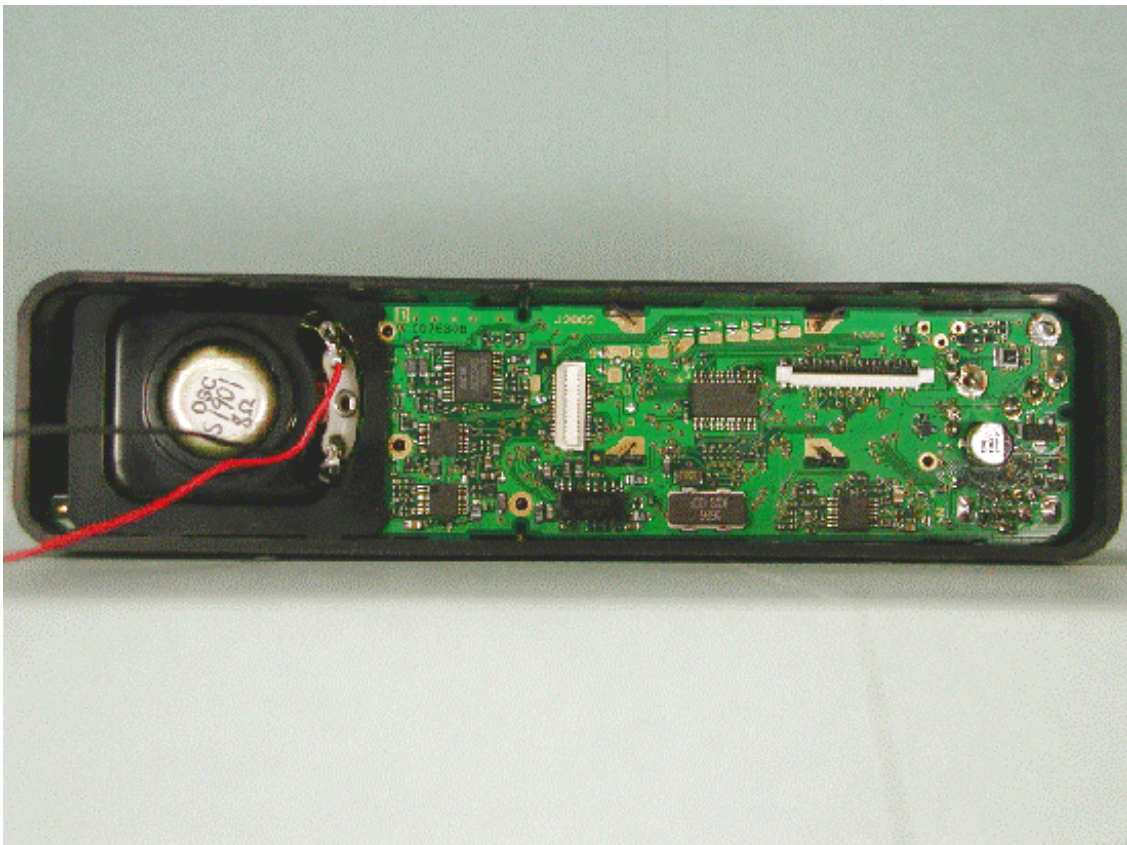
Component side of RF-UNIT without shield cases



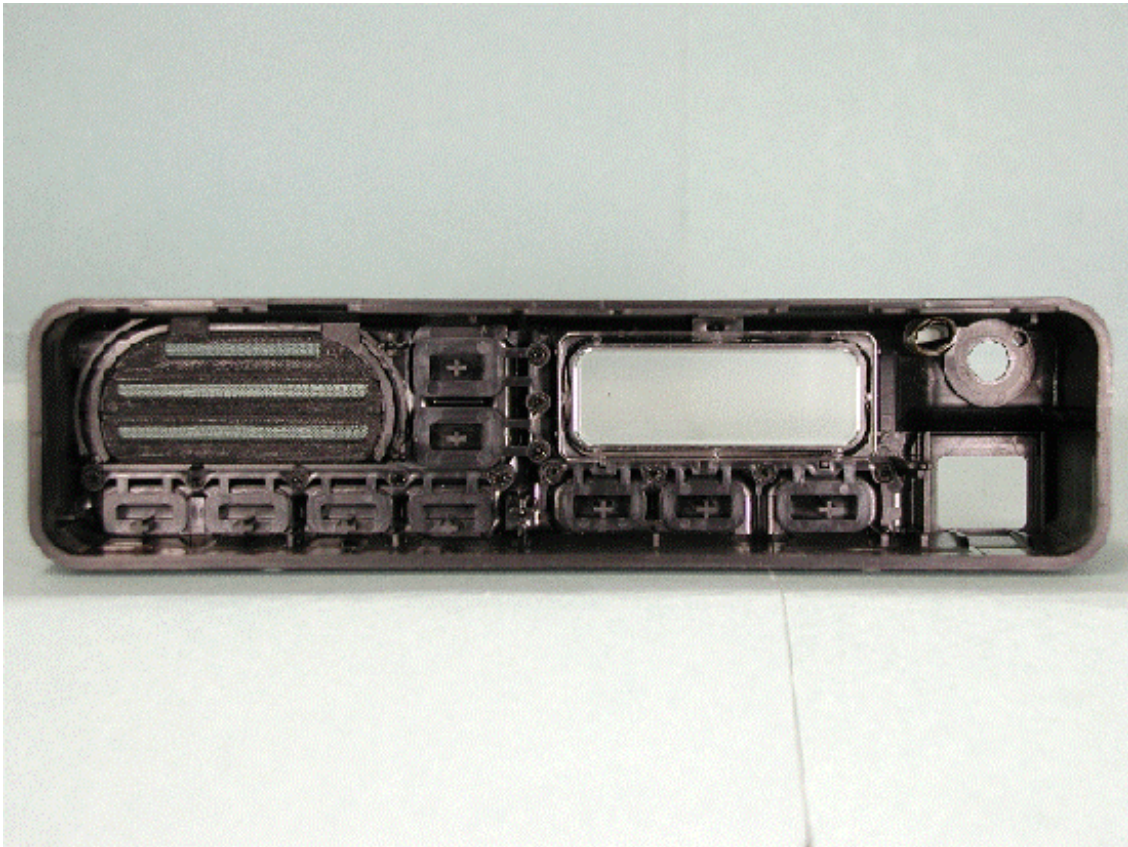
Solder side of RF-UNIT



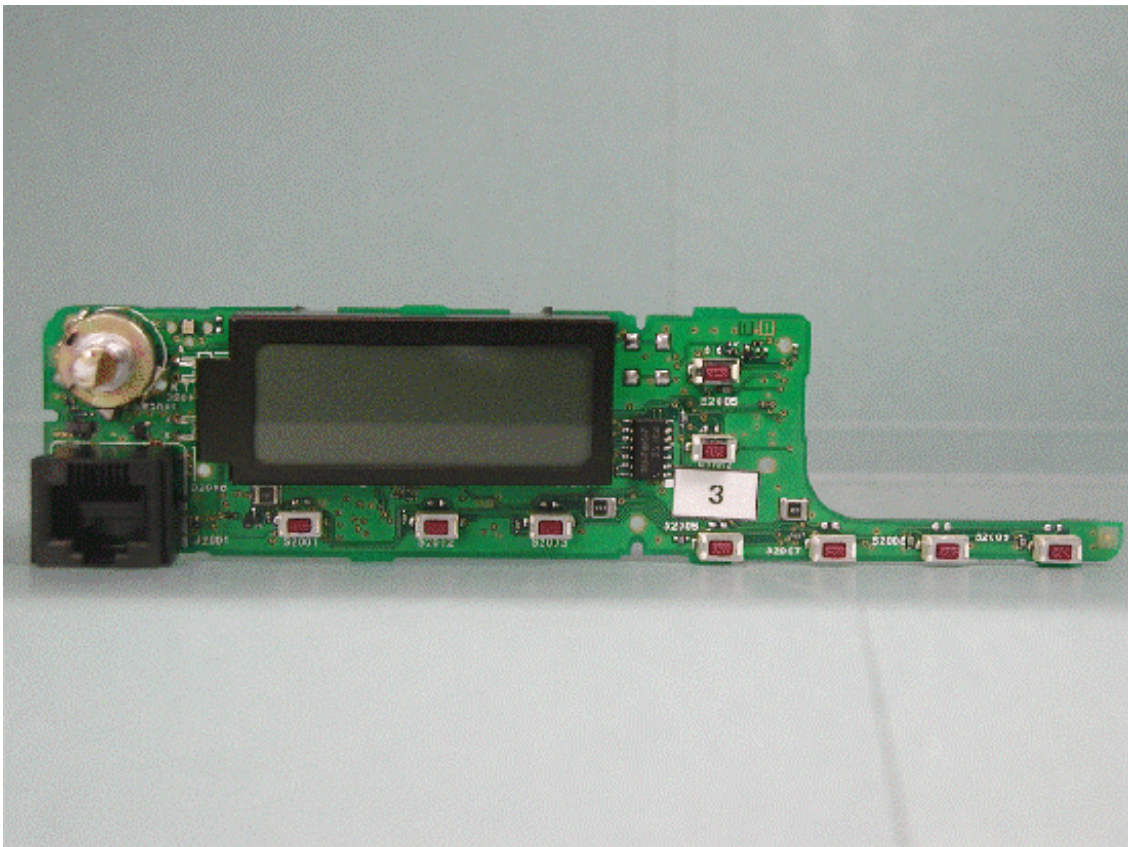
Inside front panel with PWB



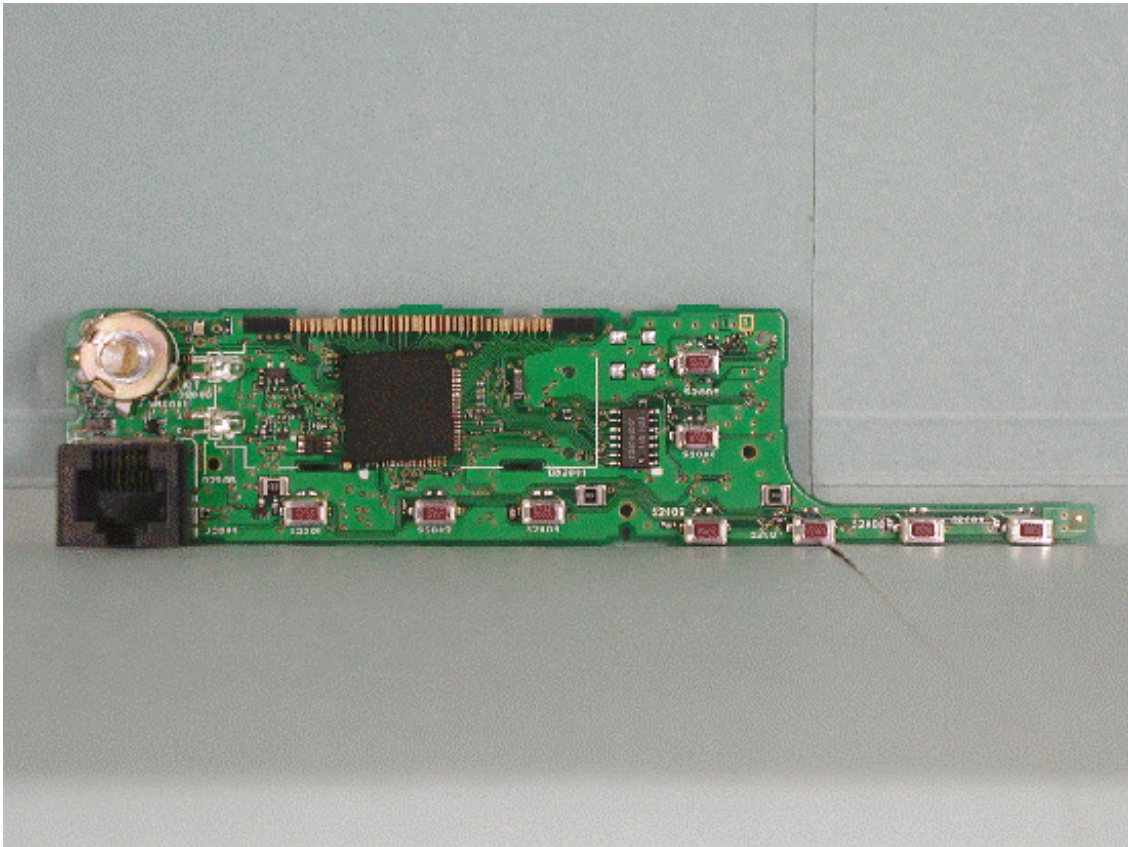
Inside front panel without PWB



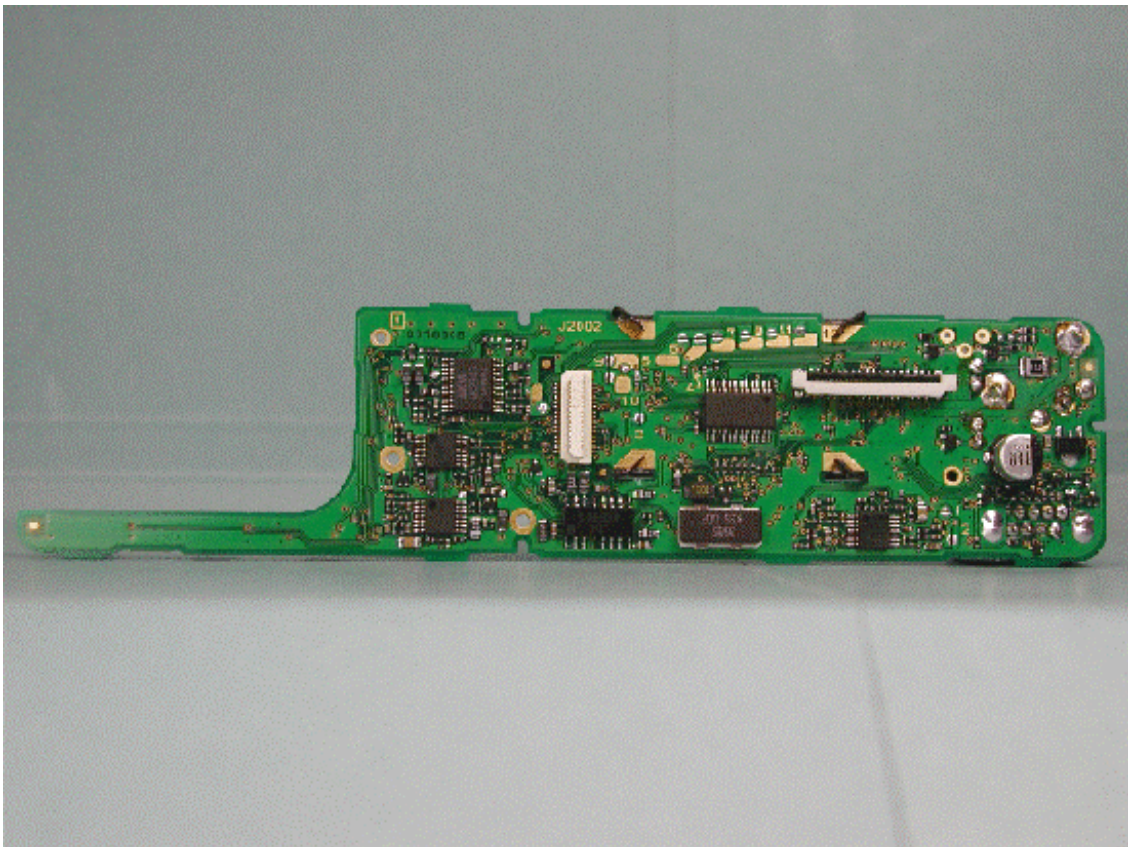
Component side of PANEL-UNIT with LCD



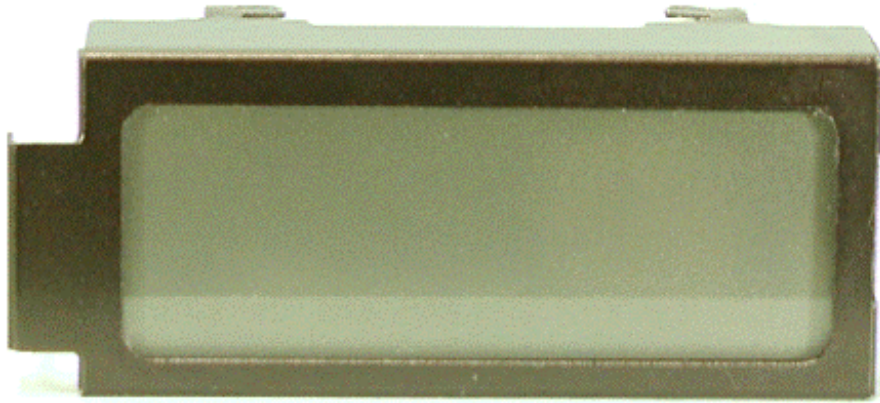
Component side of PANEL-UNIT without LCD



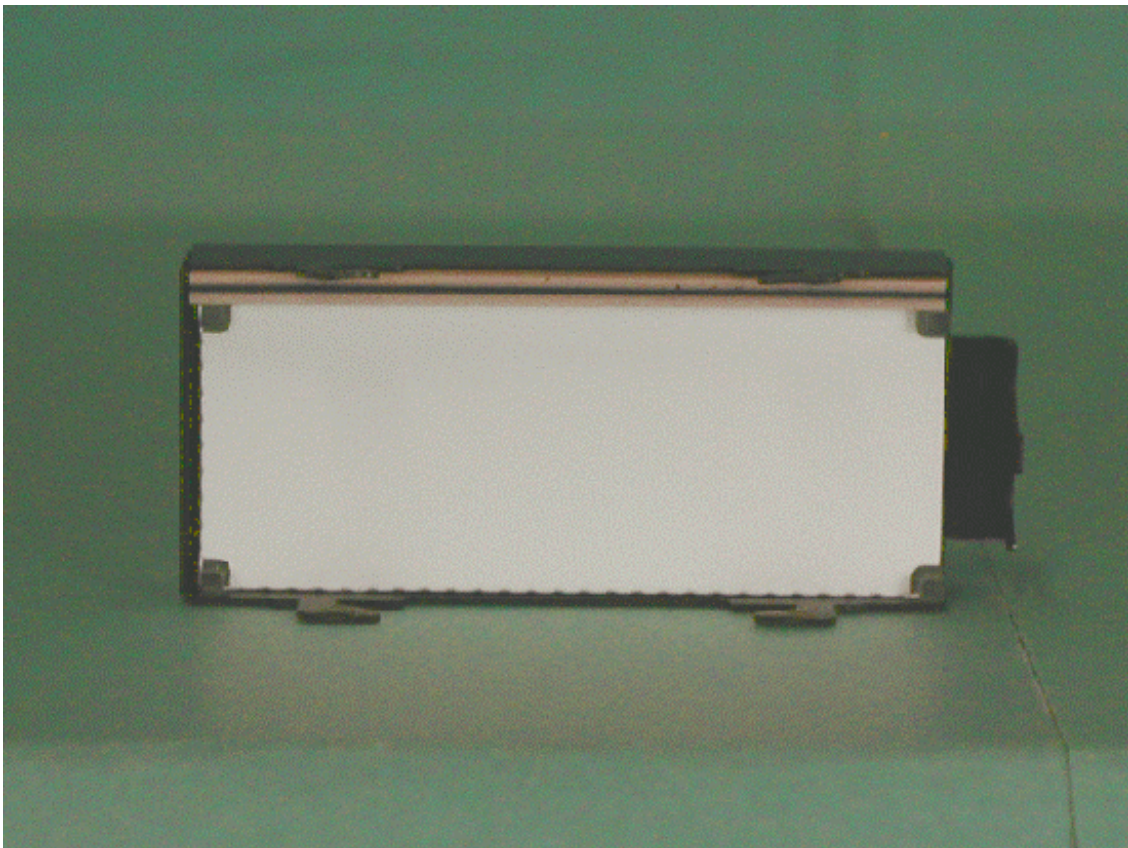
Solder side of PANEL-UNIT



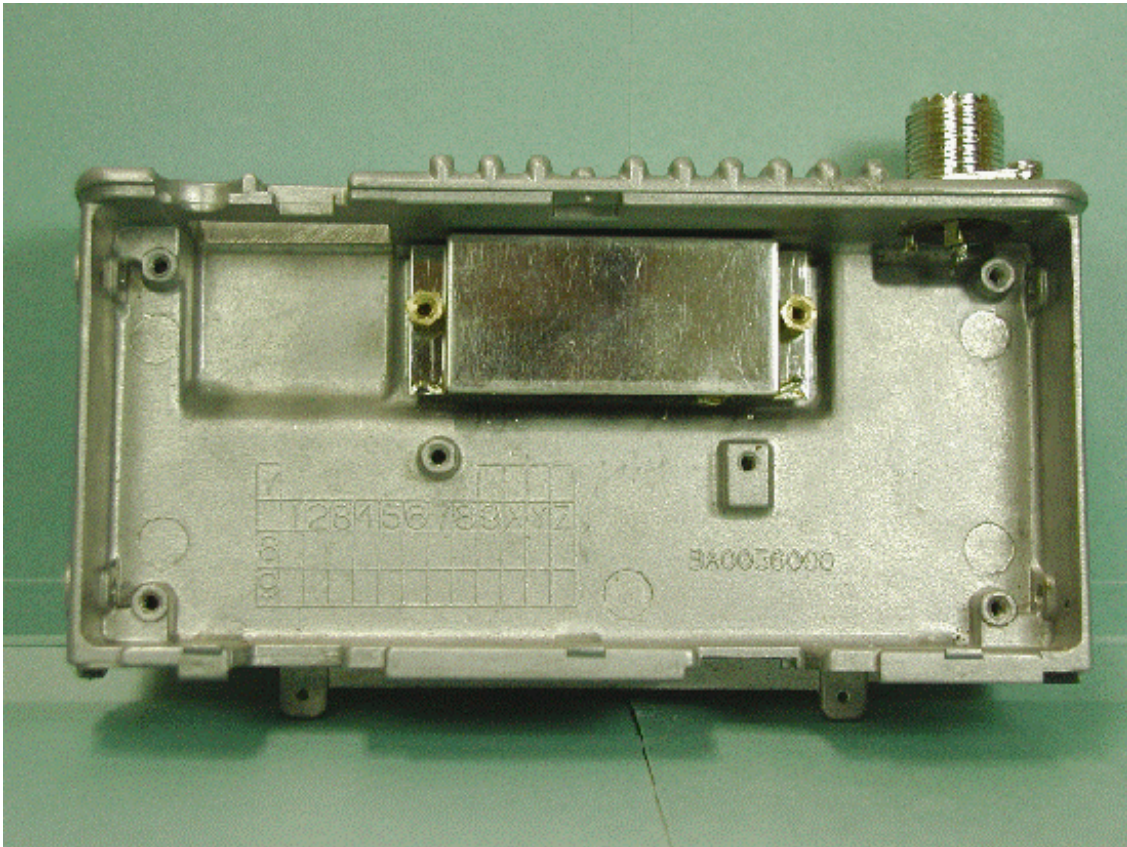
Front of LCD



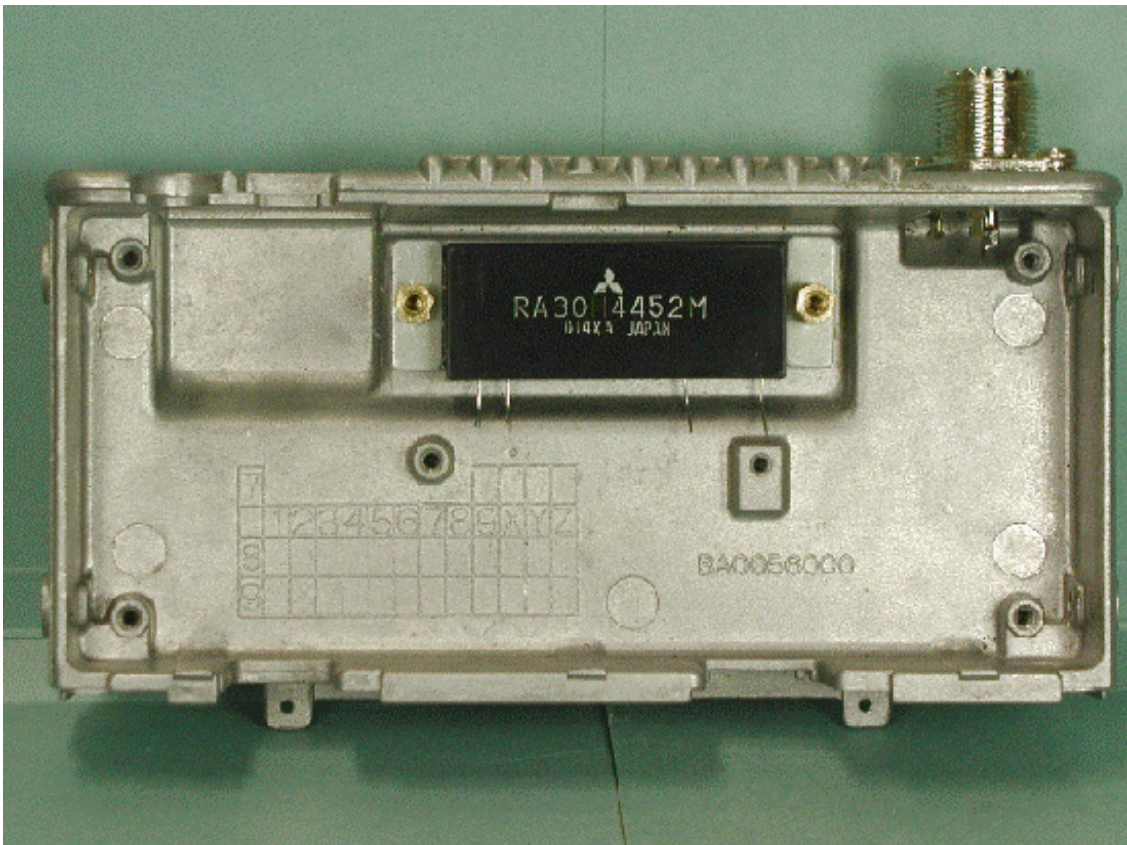
Back of LCD



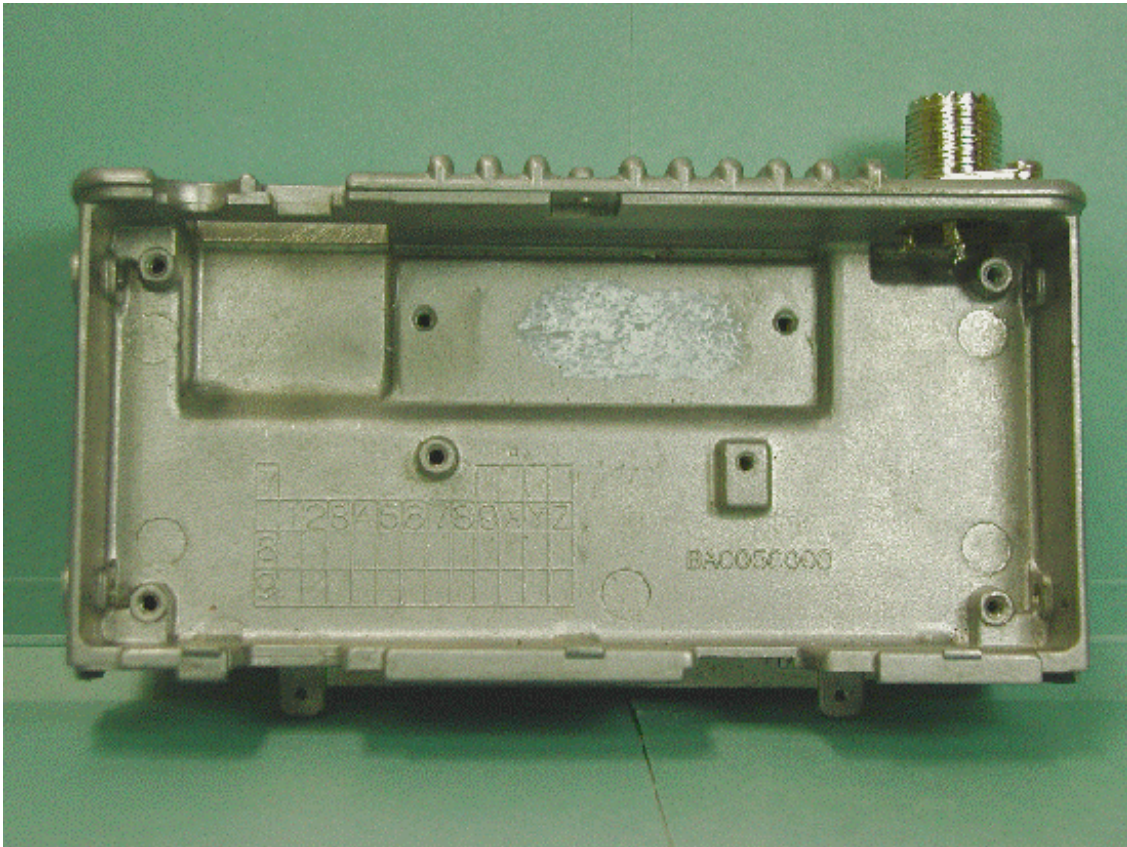
Inside of chassis with power module & shield case



Inside of chassis with power module



Inside of chassis



Inside of microphone

