

Back of without battery pack

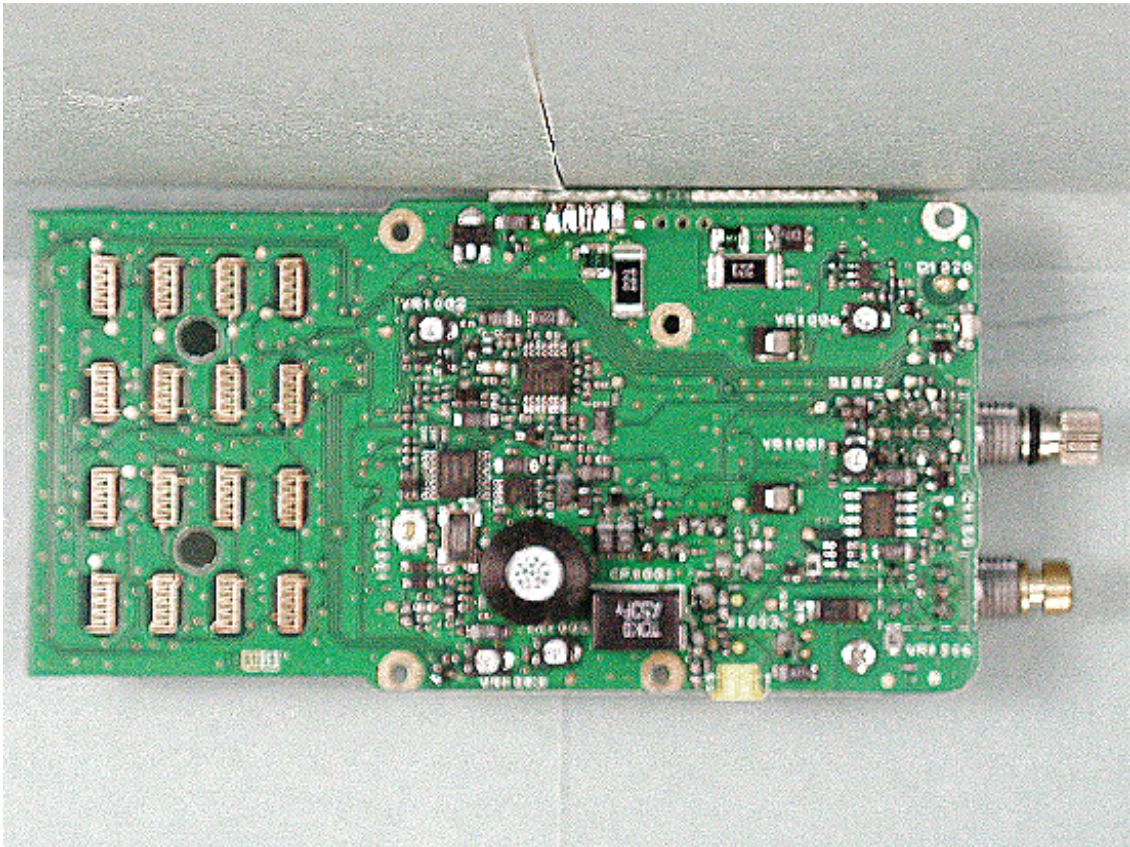


Battery pack

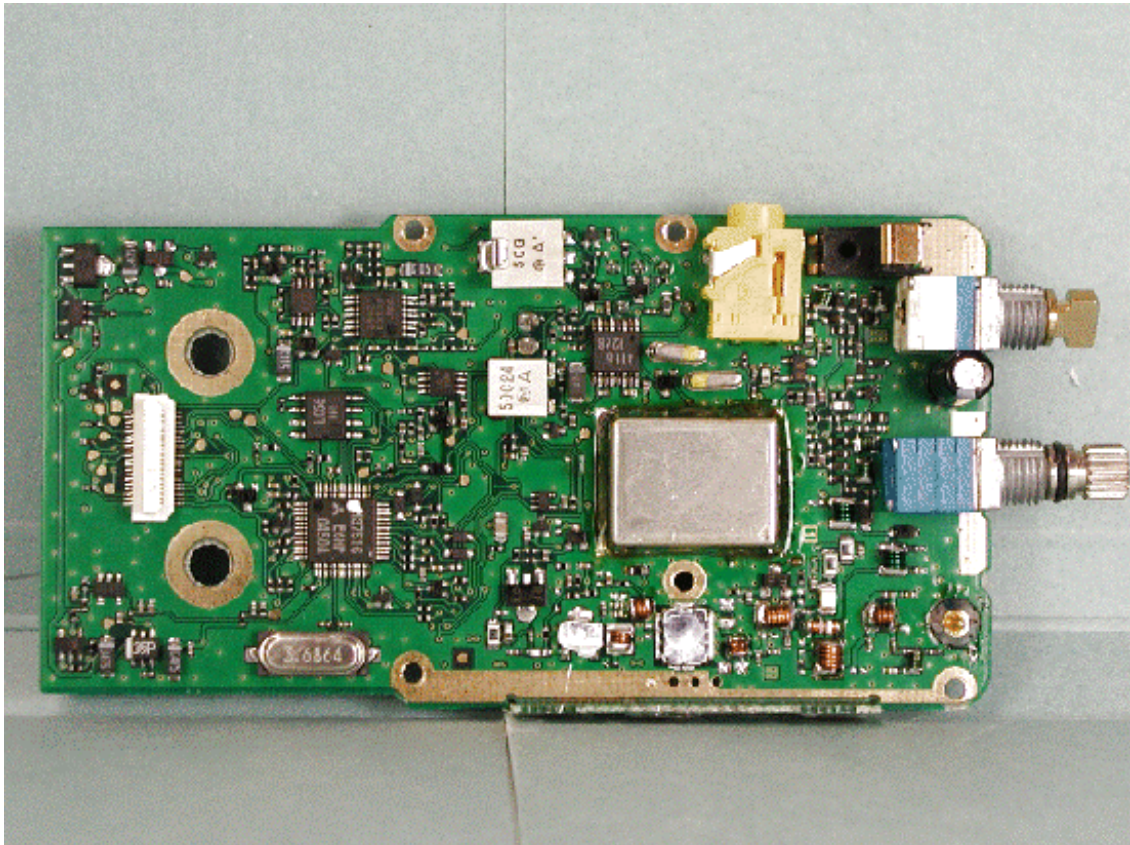




Side-A of PCB

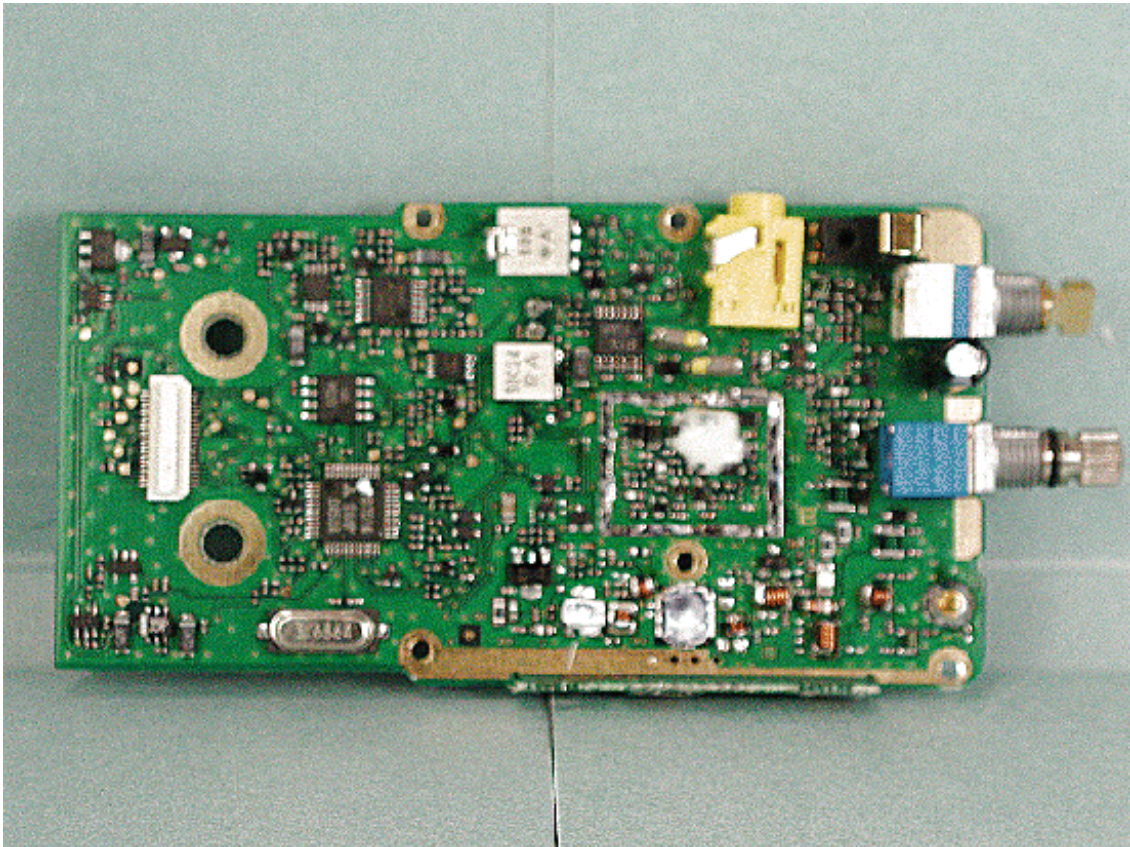


Side-B of PCB with shield case

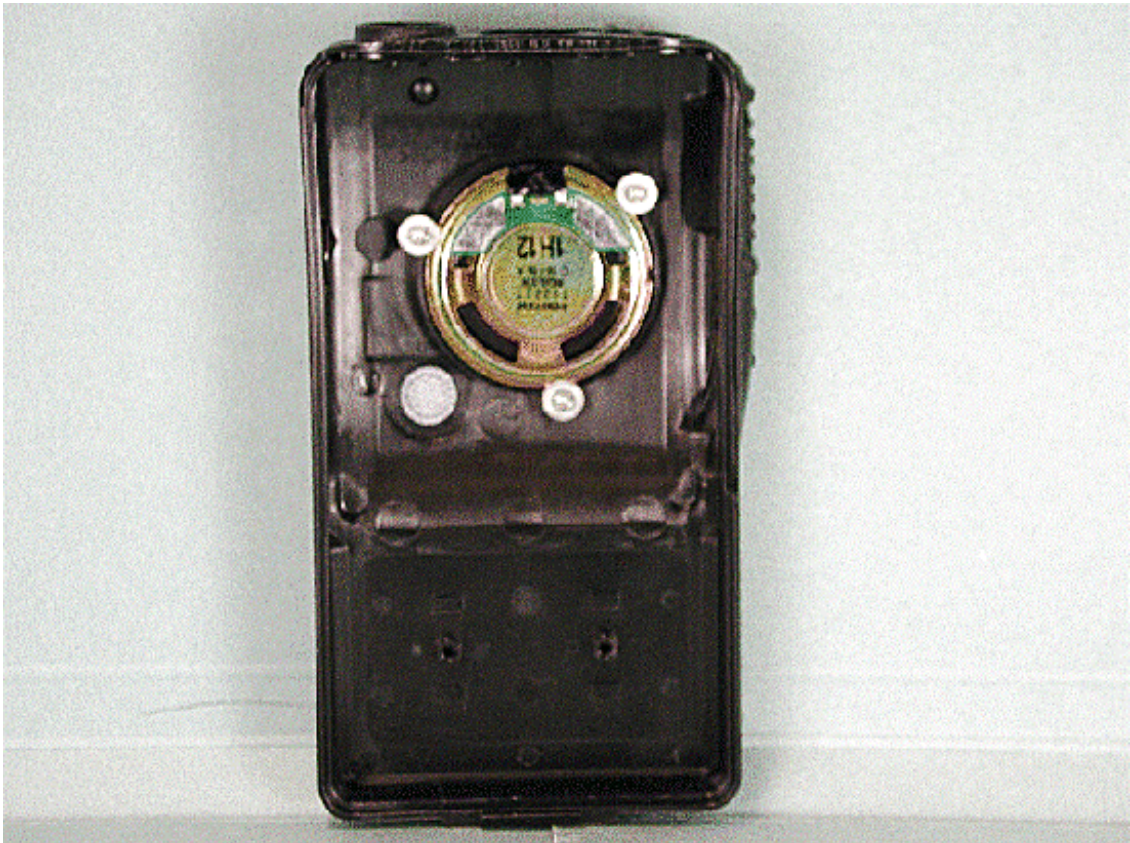




Side-B of PCB without shield case

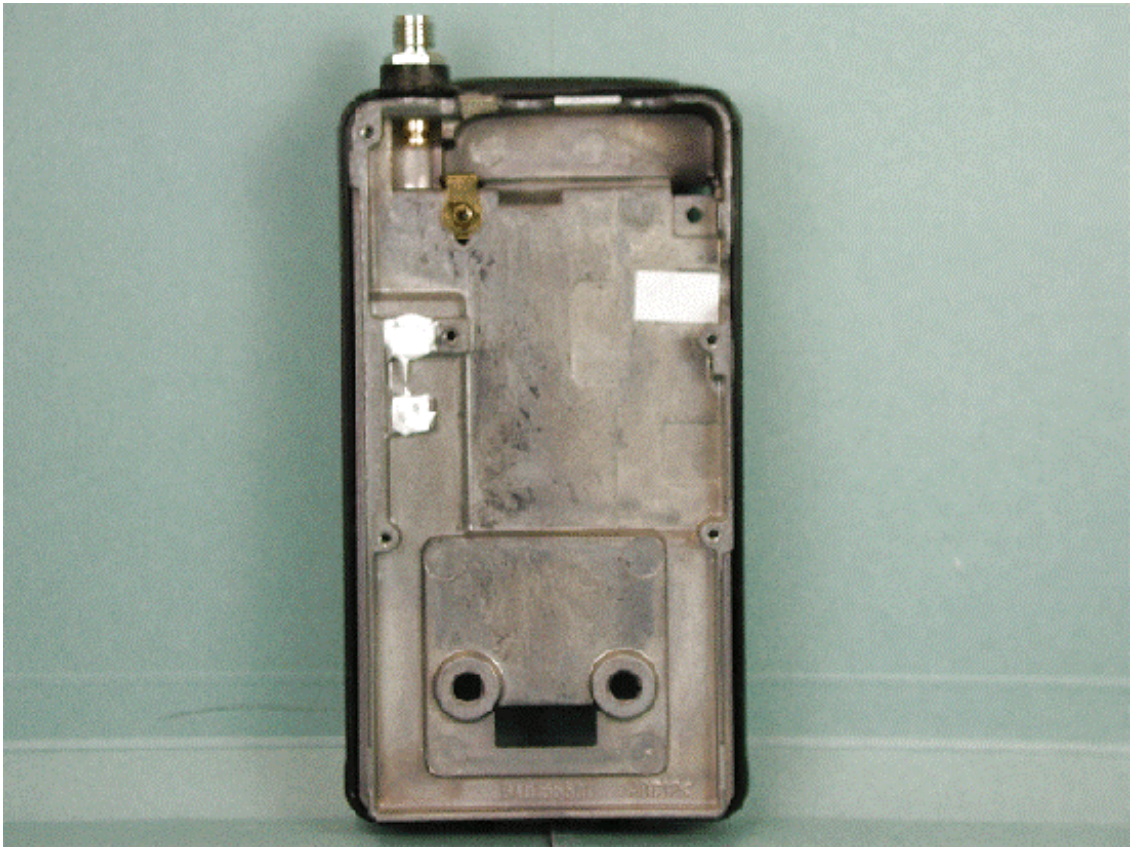


Inside of front panel

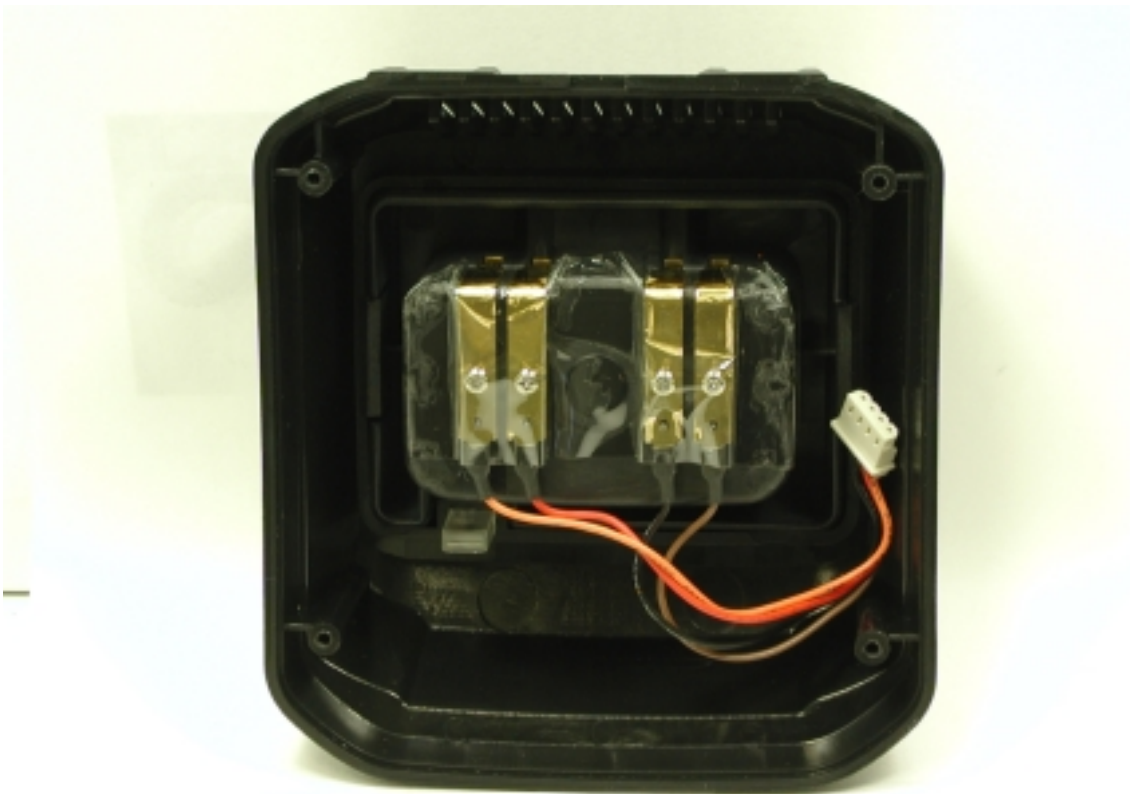




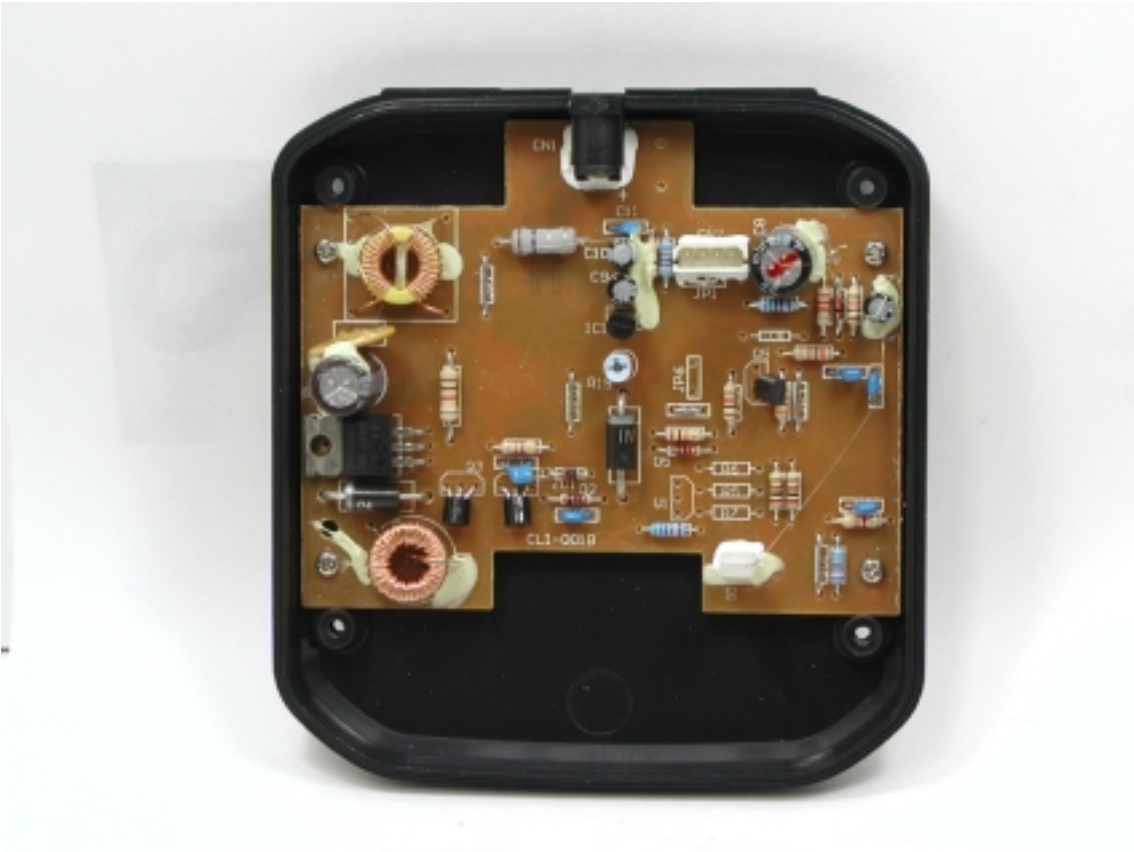
Inside back of chassis



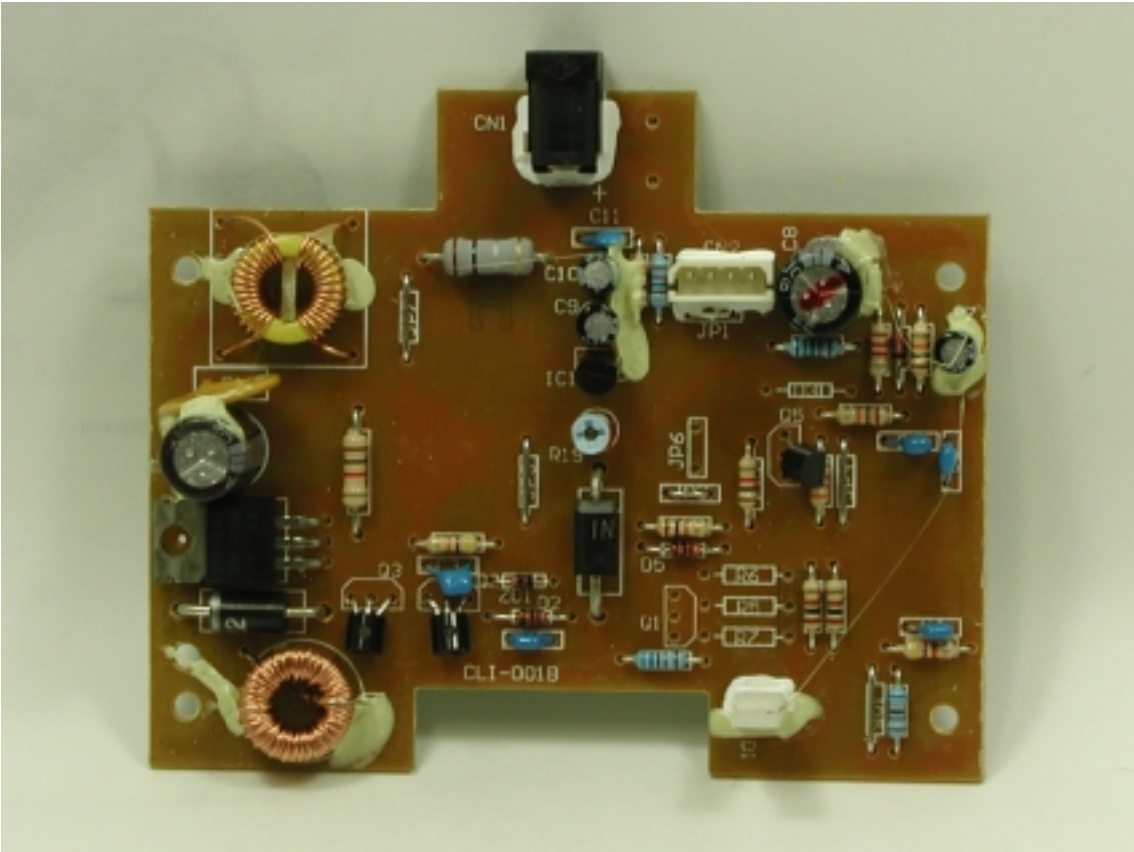
Inside top of battery charger



Inside bottom of battery charger

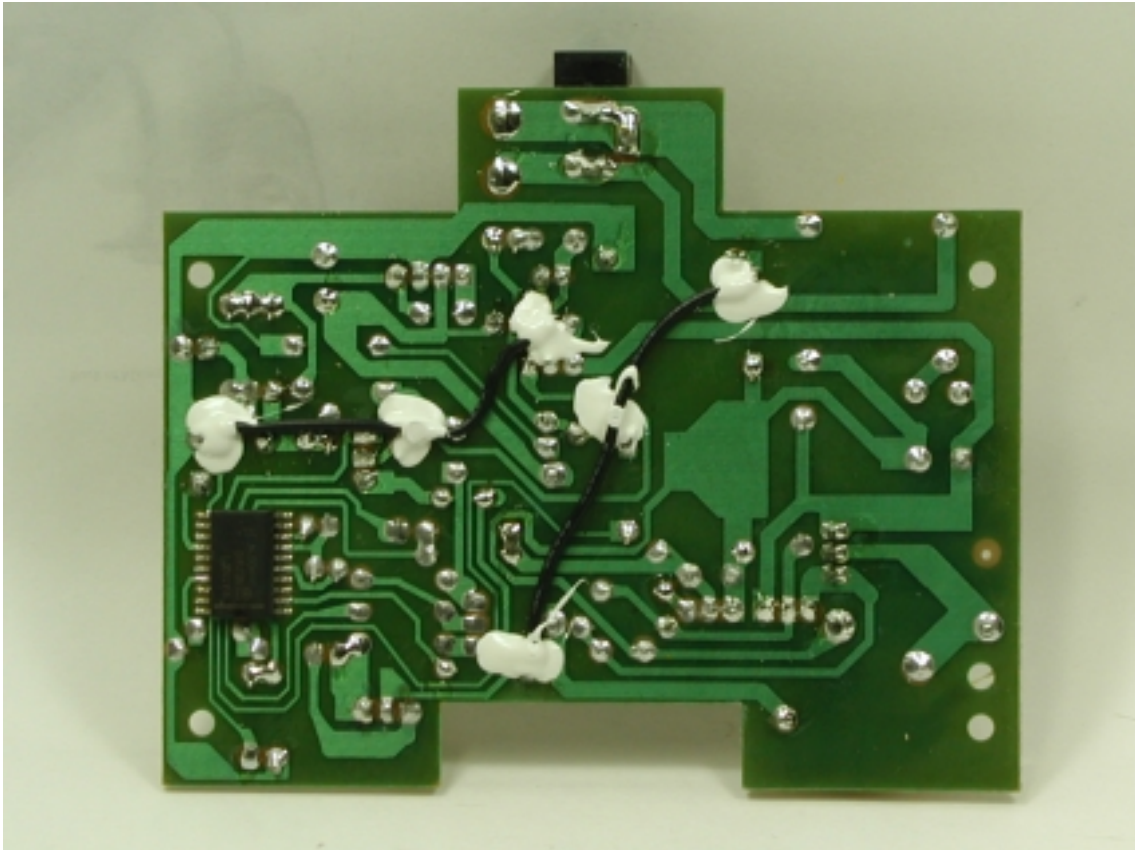


Component side of battery charger PCB





Solder side of battery charger PCB



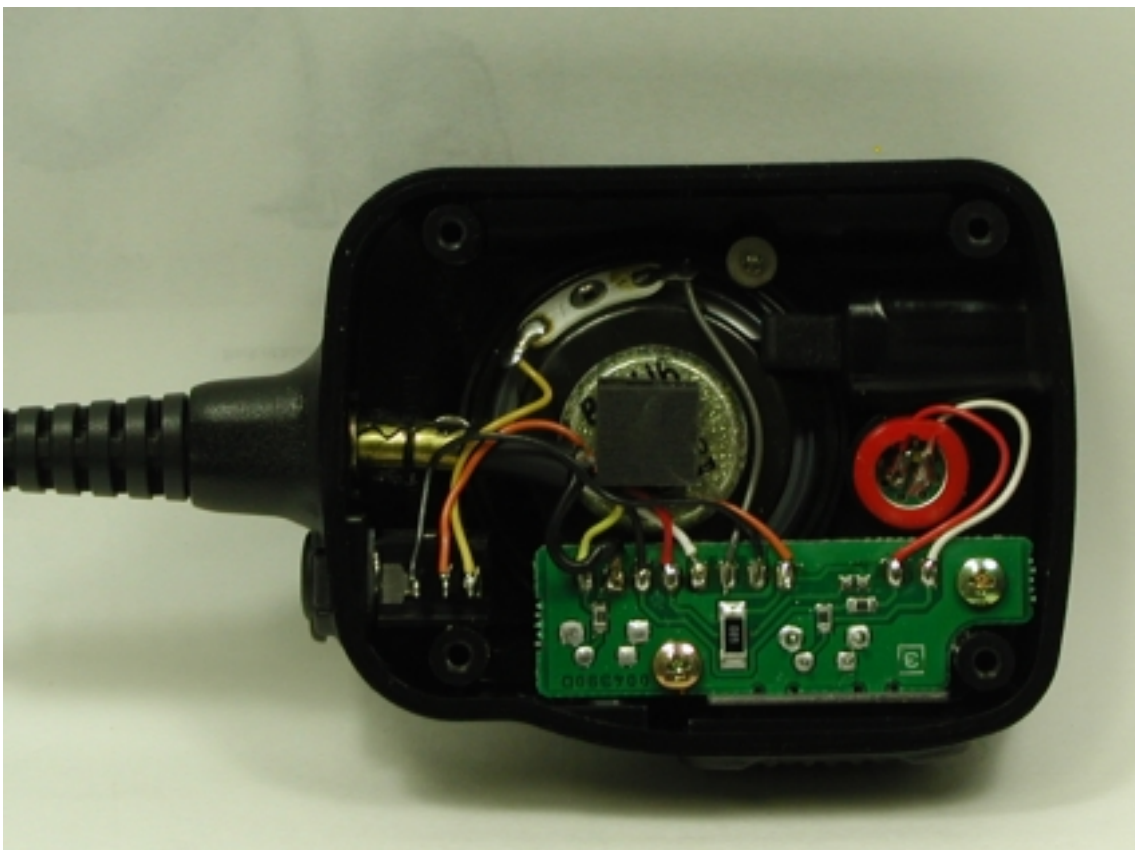
Inside top of Battery charger chassis



Inside bottom of battery charger chassis



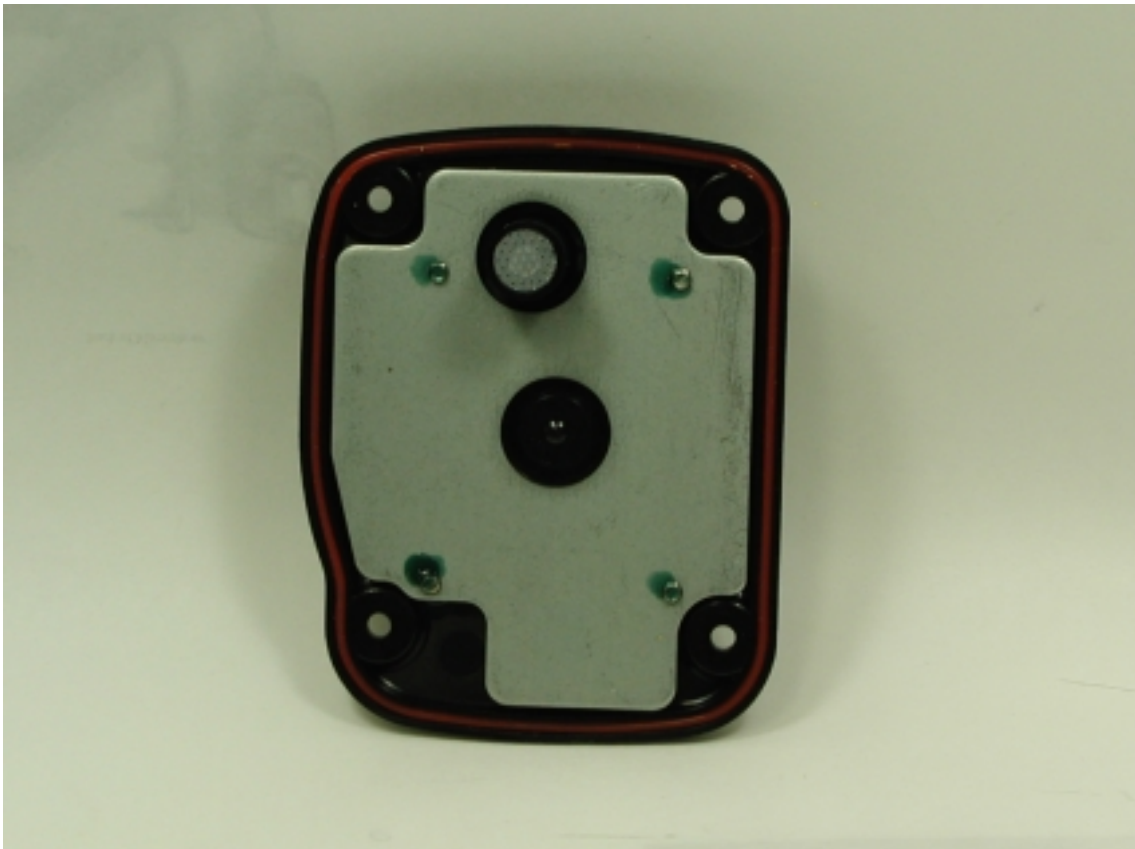
Inside of Microphone



Inside of front microphone chassis



Inside of back microphone chassis





Inside of microphone

