

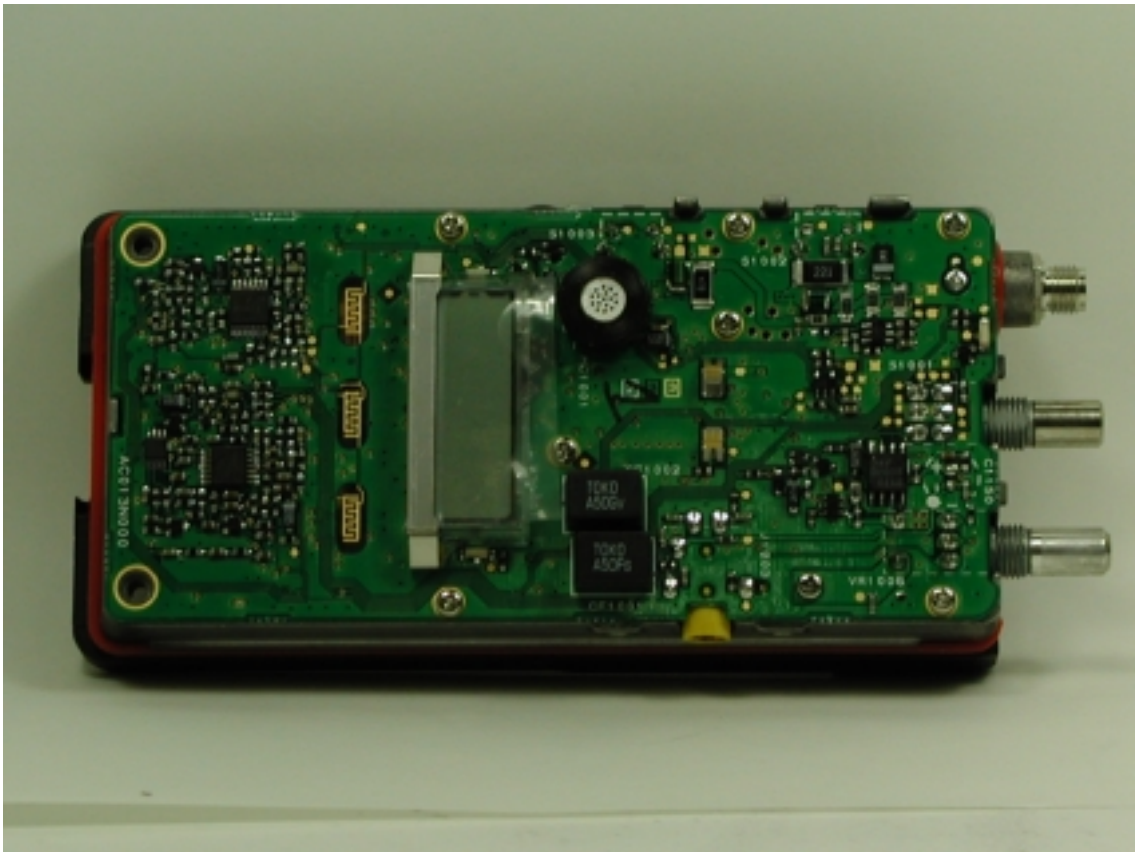
Back of without Battery Pack



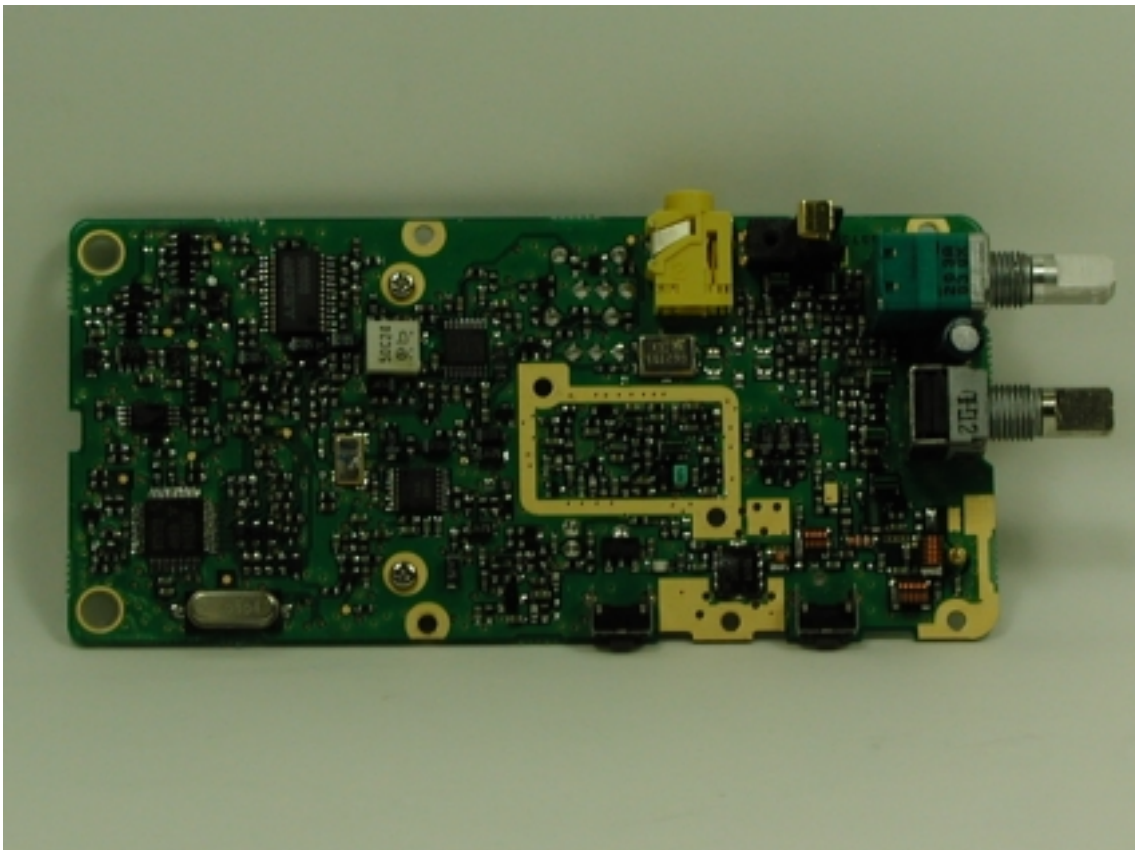
Battery Pack



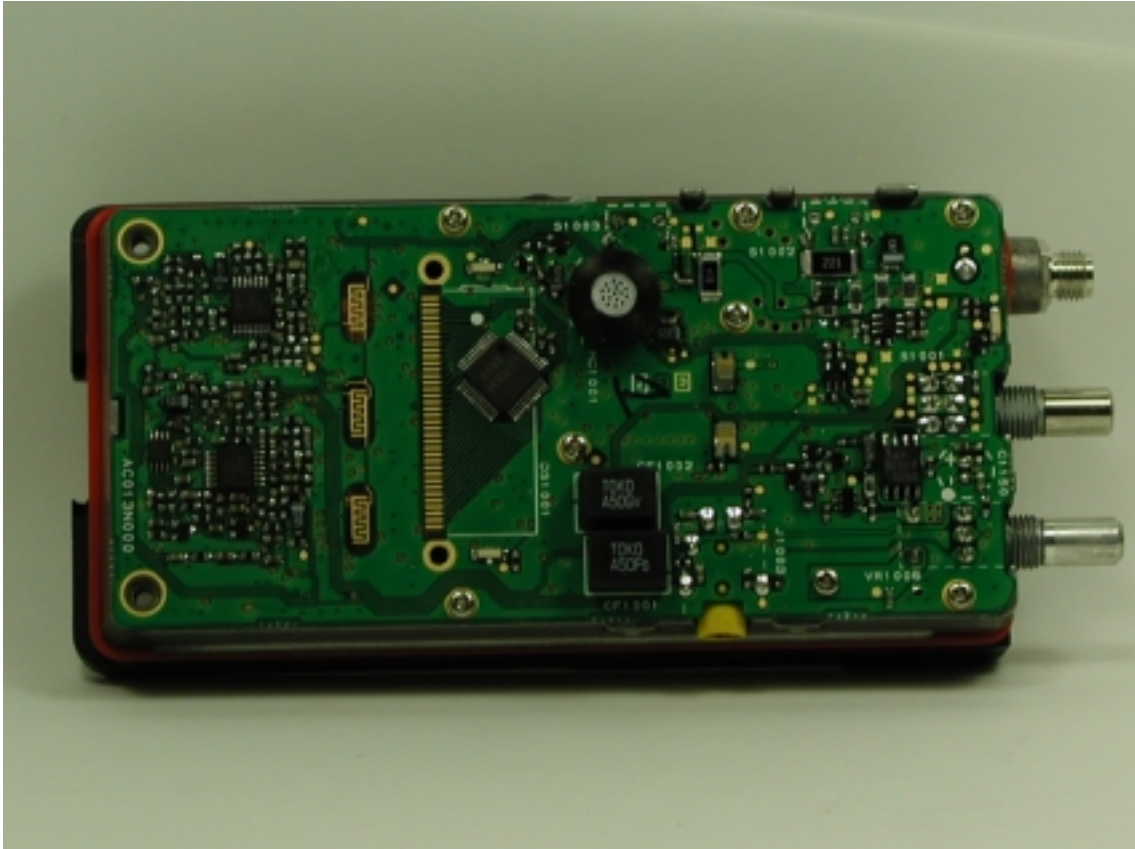
Top of PCB



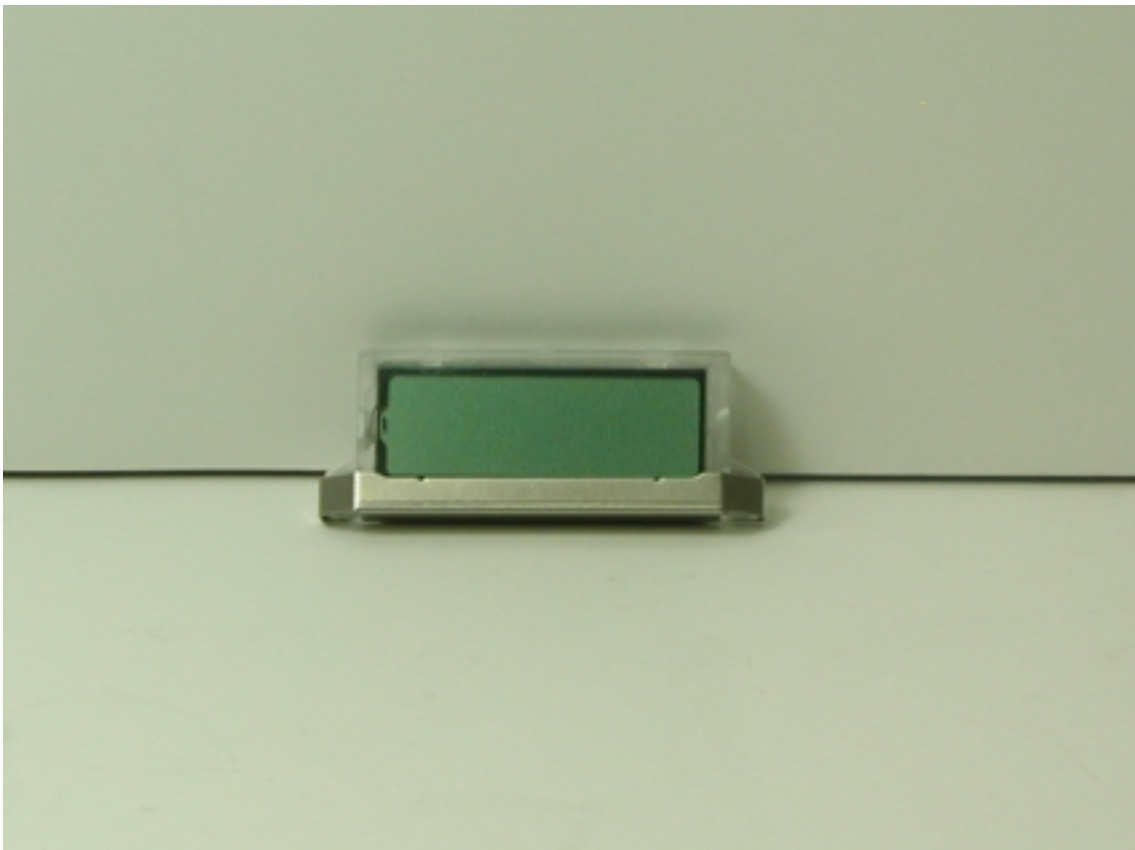
Bottom of PCB



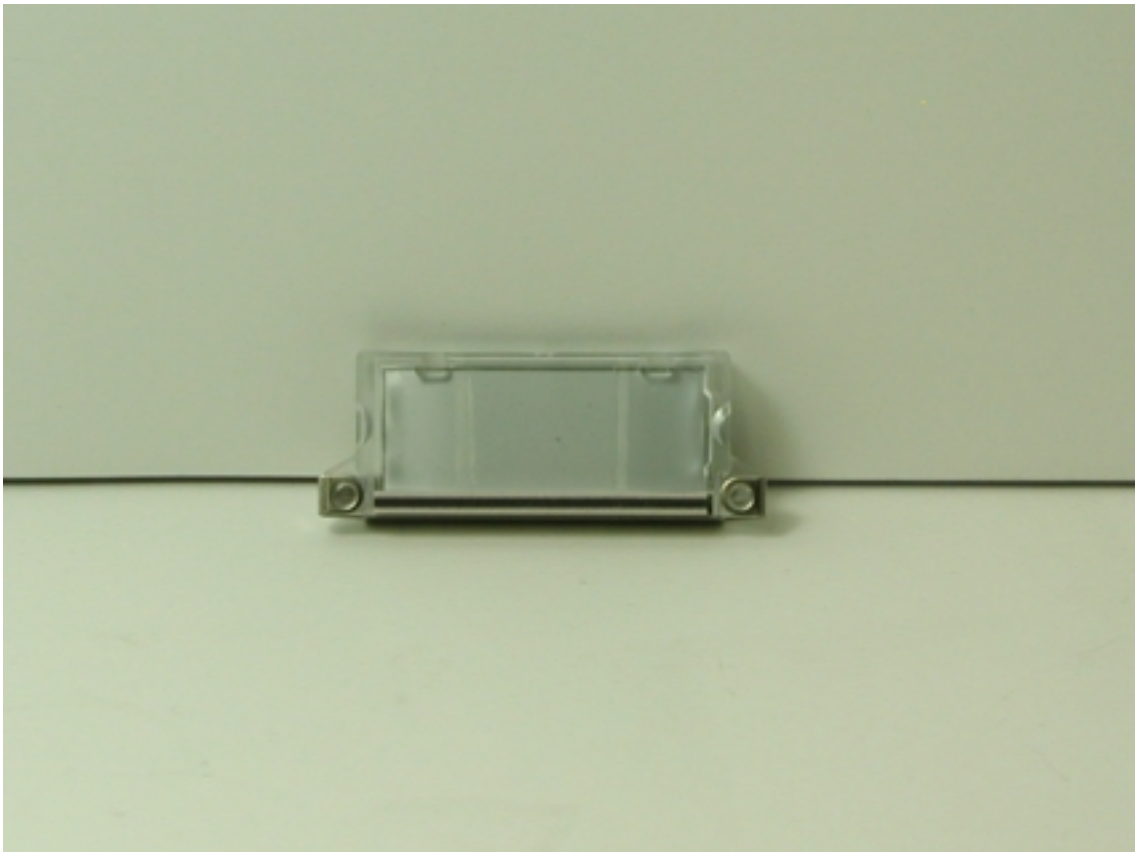
Top of PCB without LCD



Front of LCD



Back of LCD



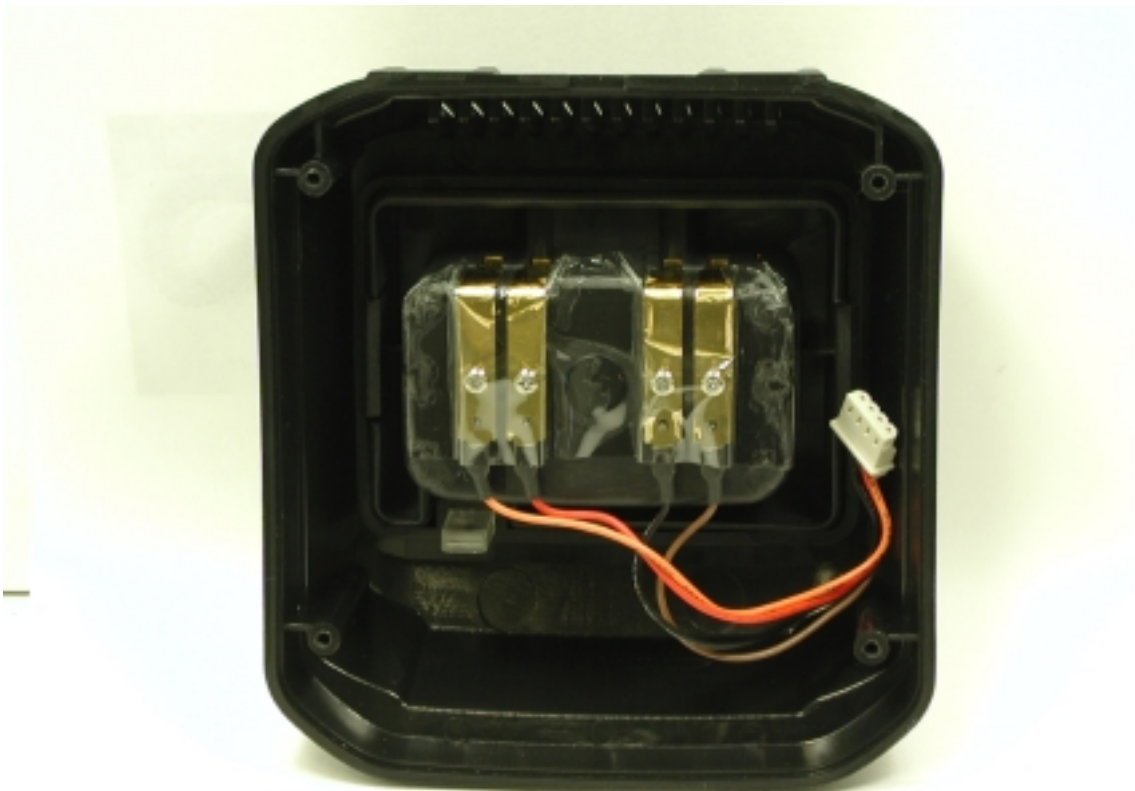
Inside Front of Chassis



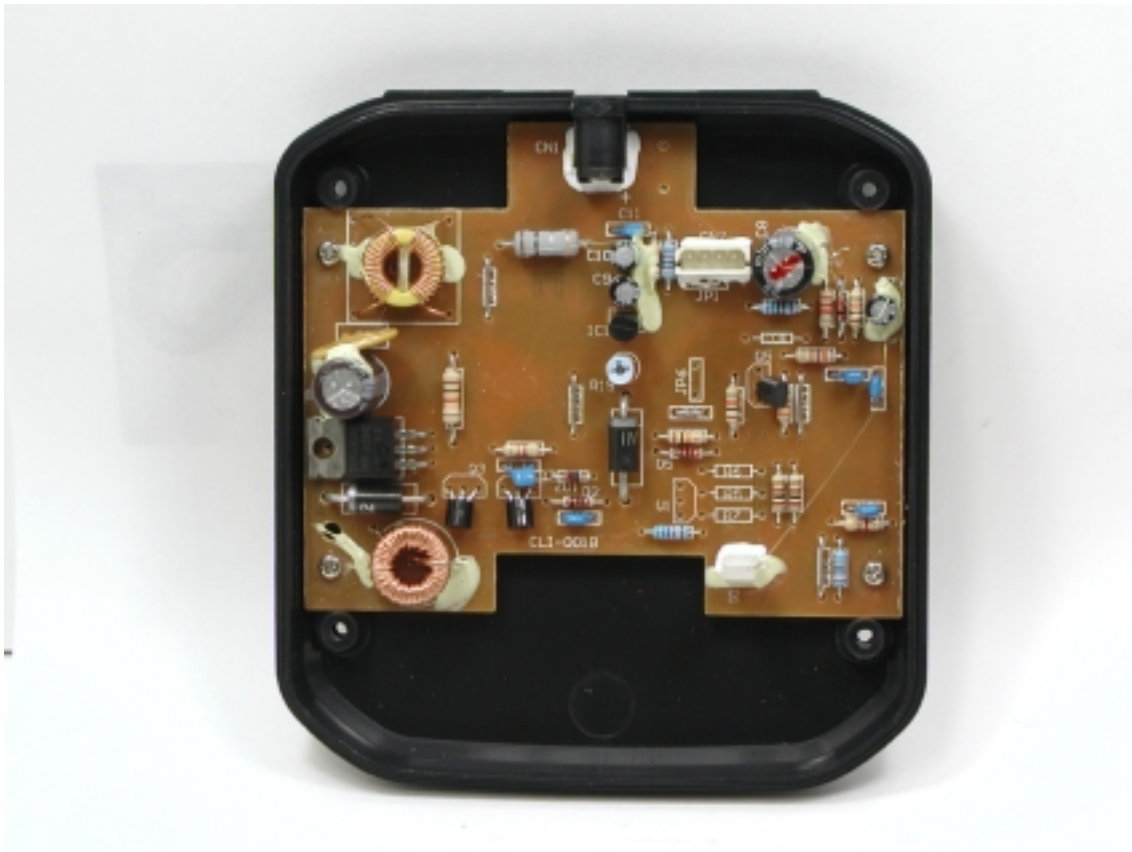
Inside Back of Chassis



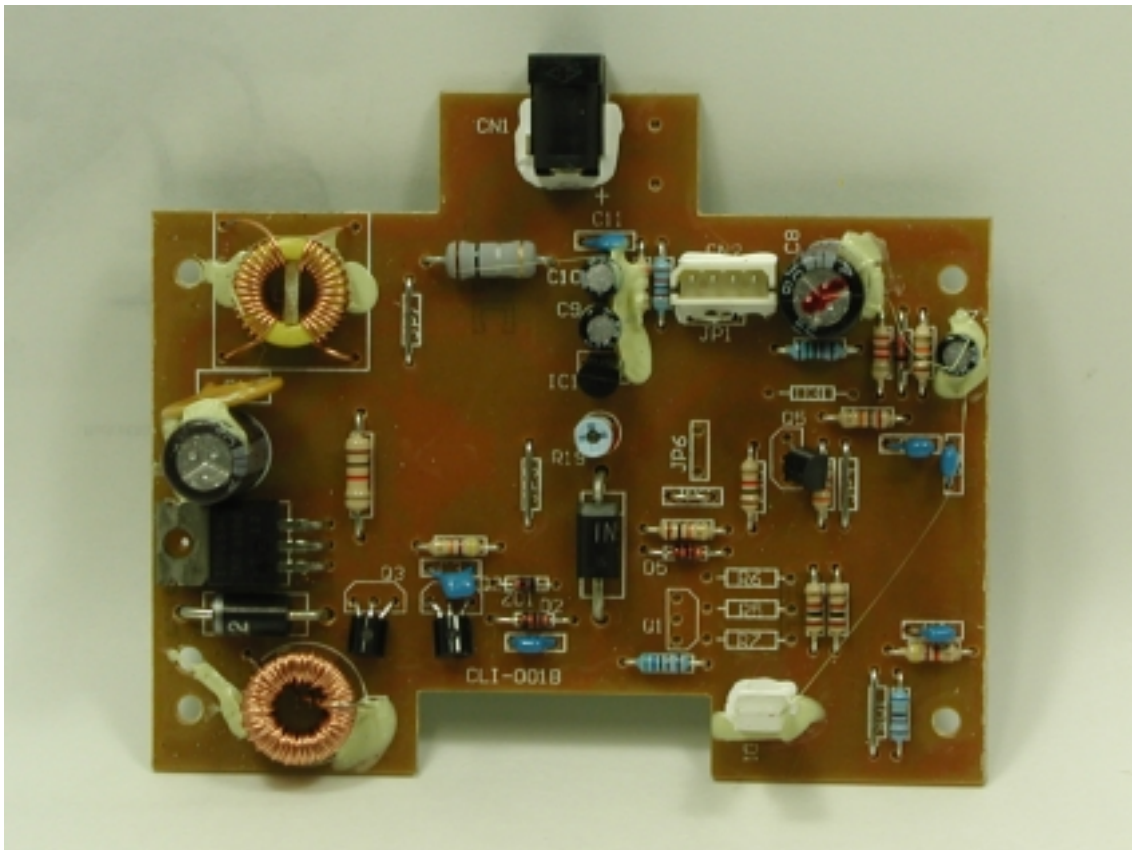
Inside Top of Battery Charger



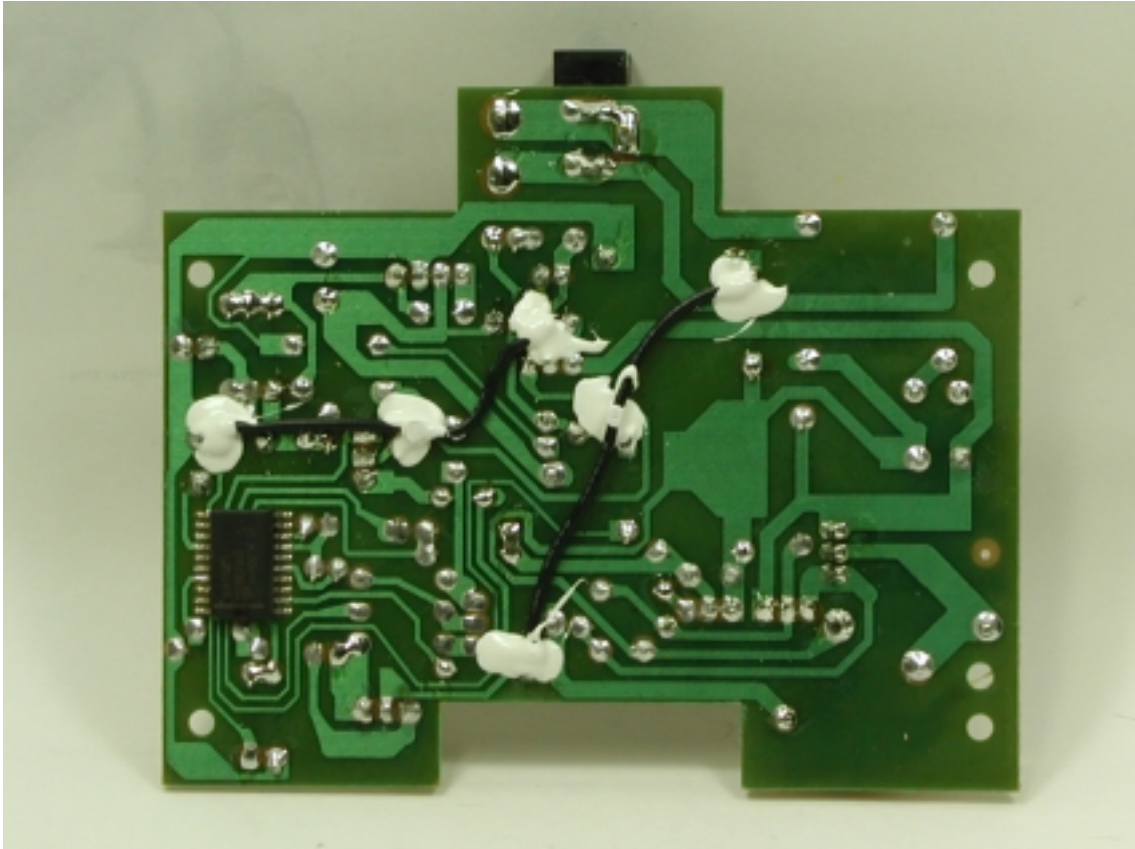
Inside Bottom of Battery Charger



Component Side of Battery Charger PCB



Solder Side of Battery Charger PCB



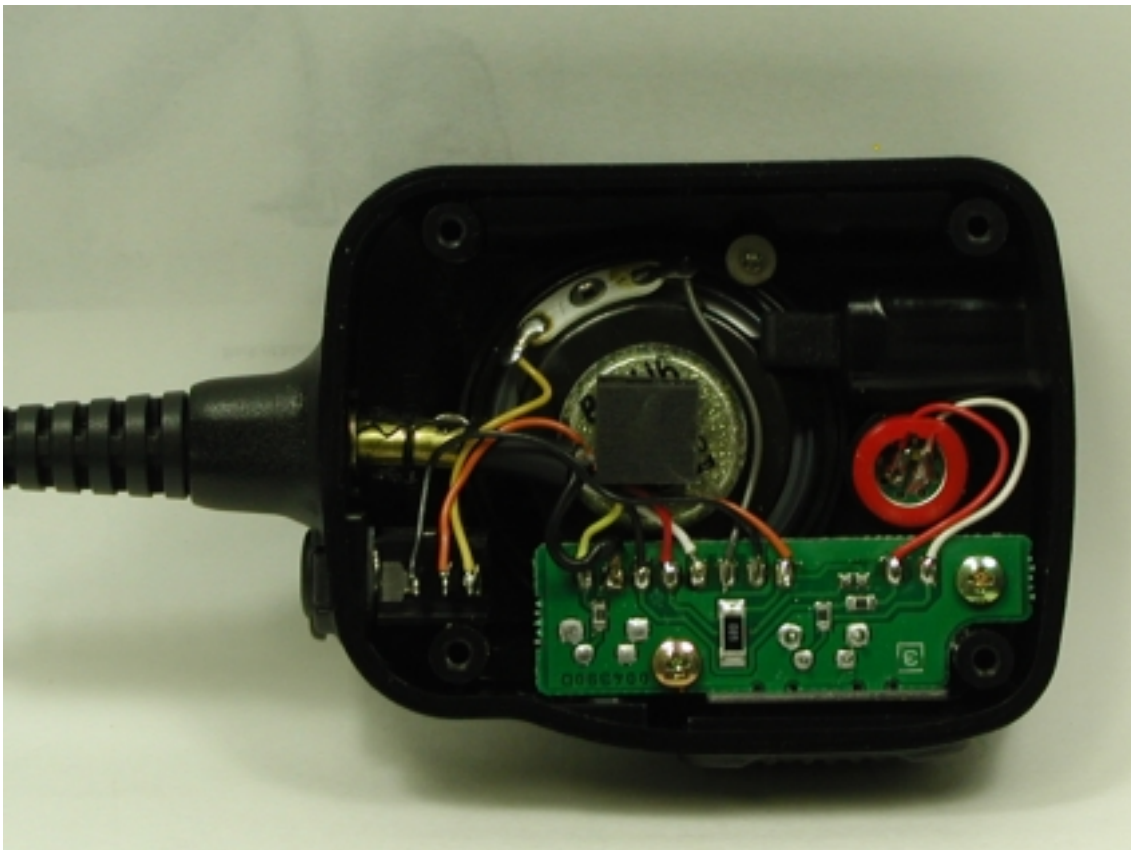
Inside Top Battery Charger Chassis



Inside Bottom Battery Charger Chassis



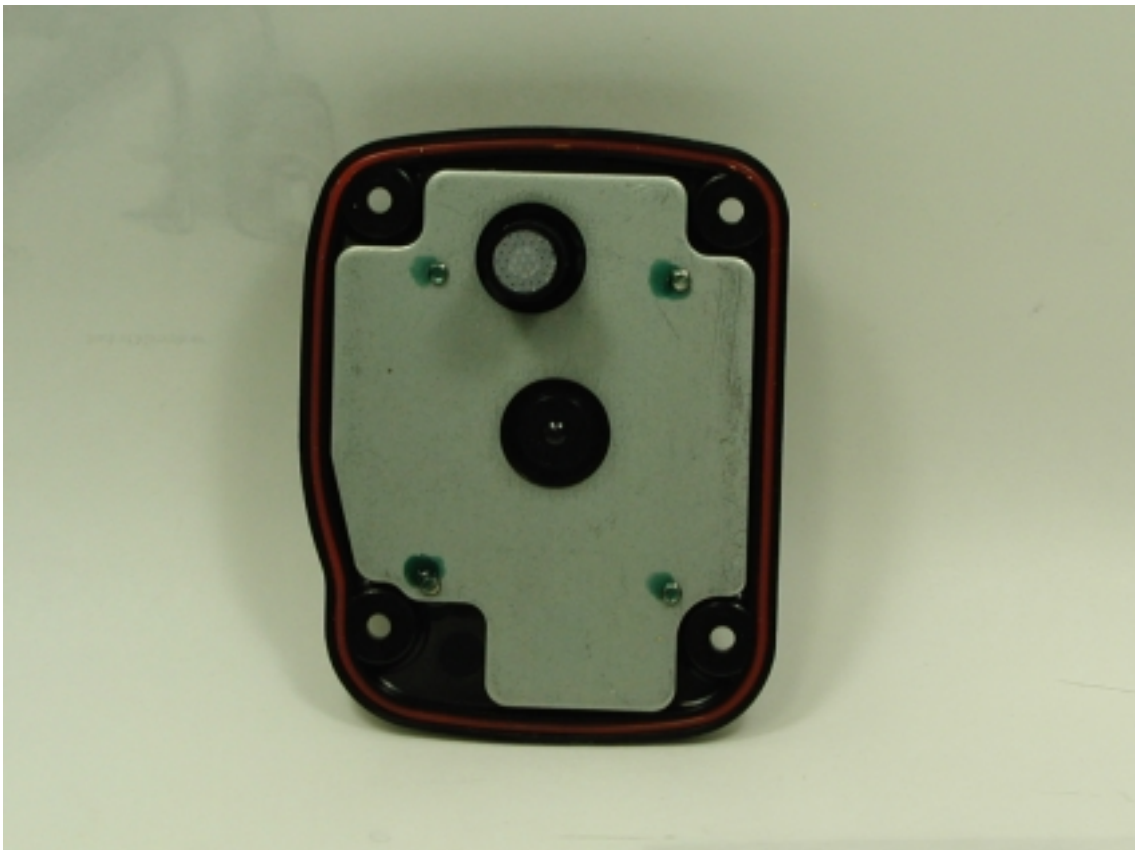
Inside of Microphone



Inside of Front Microphone Chassis



Inside of Back Microphone Chassis



Inside of Microphone

