

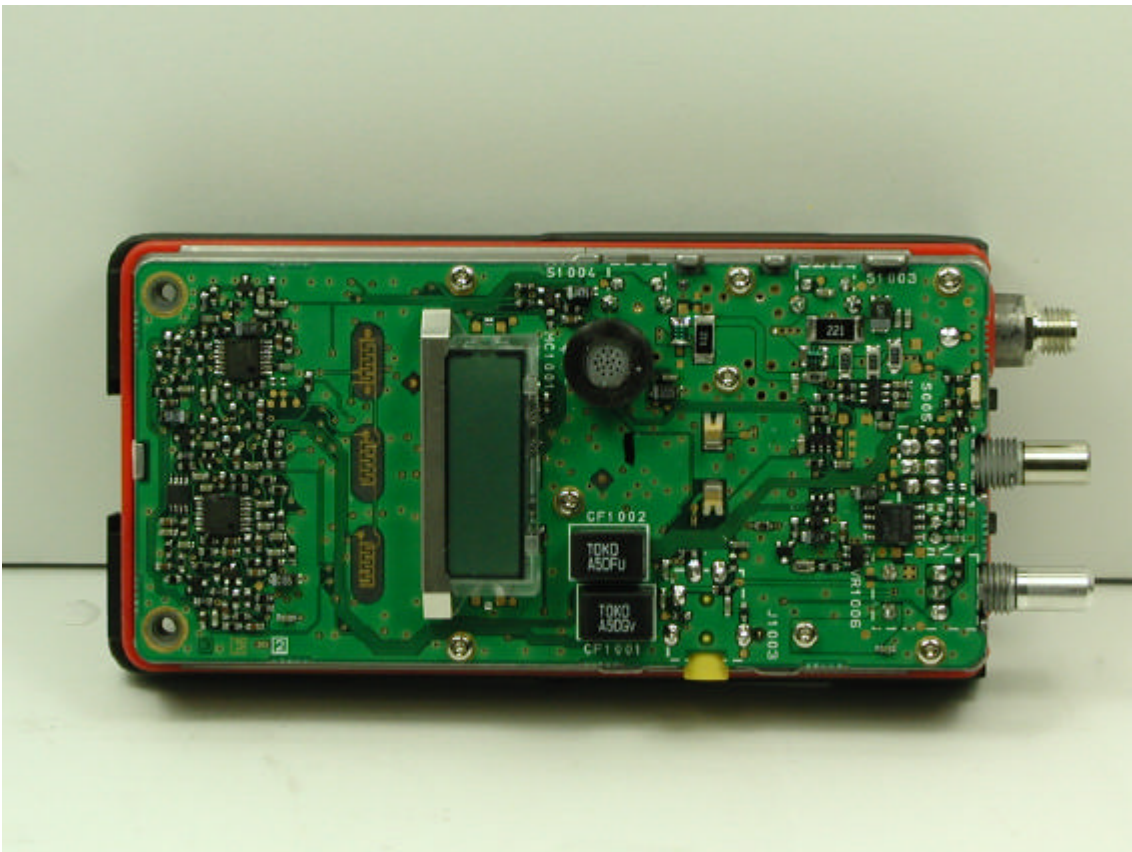
**Back of without Battery Pack**



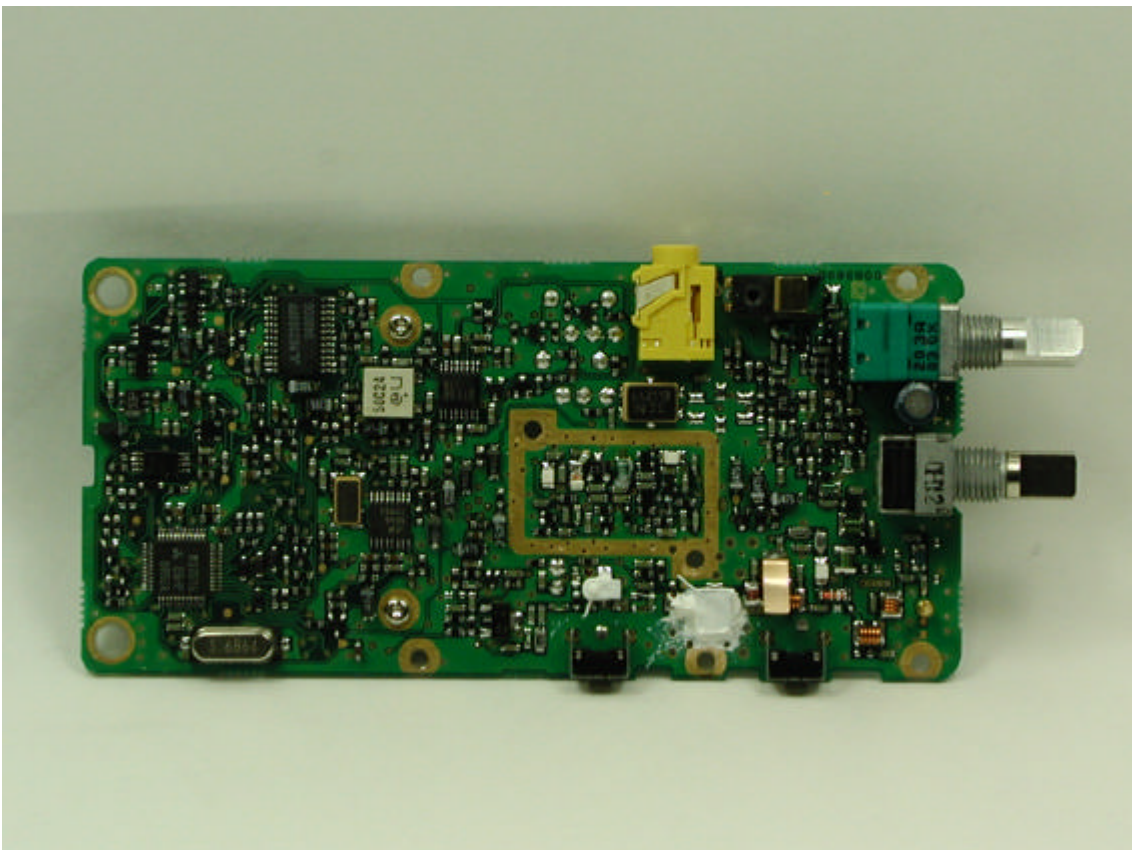
**Battery Pack**



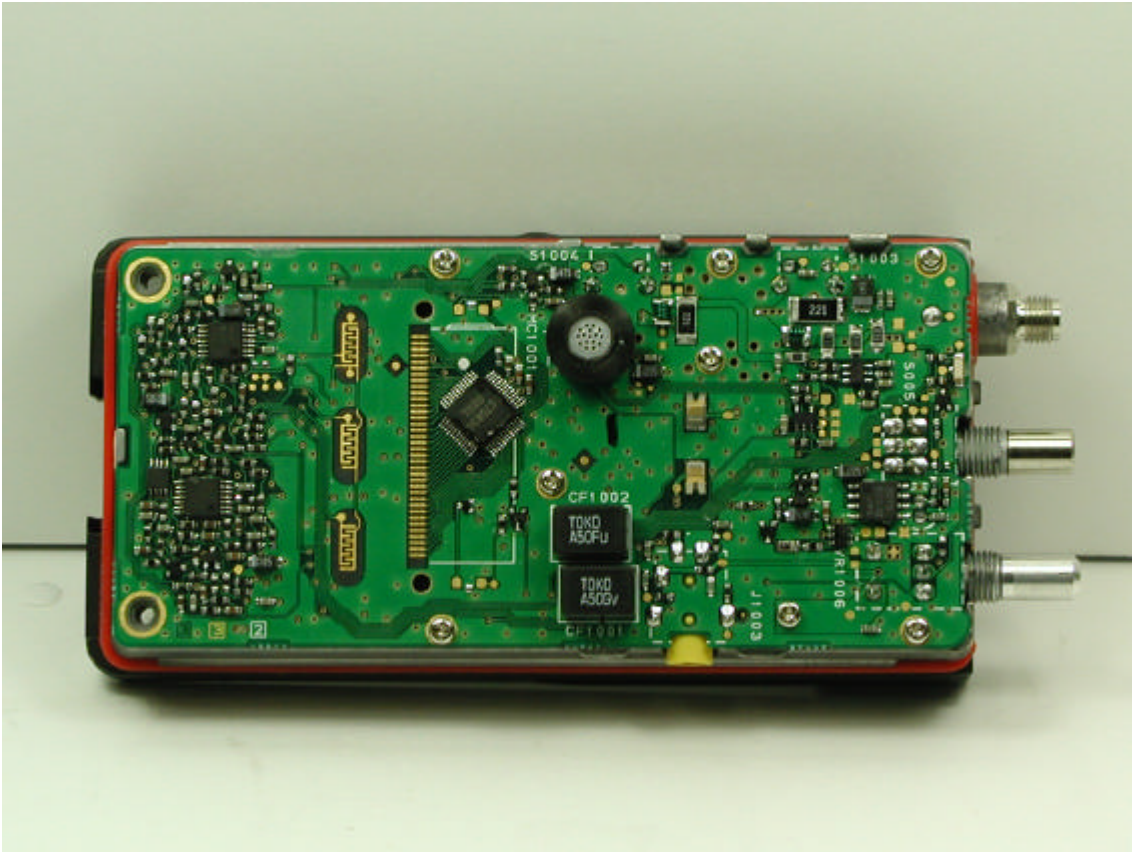
**Top of PCB**



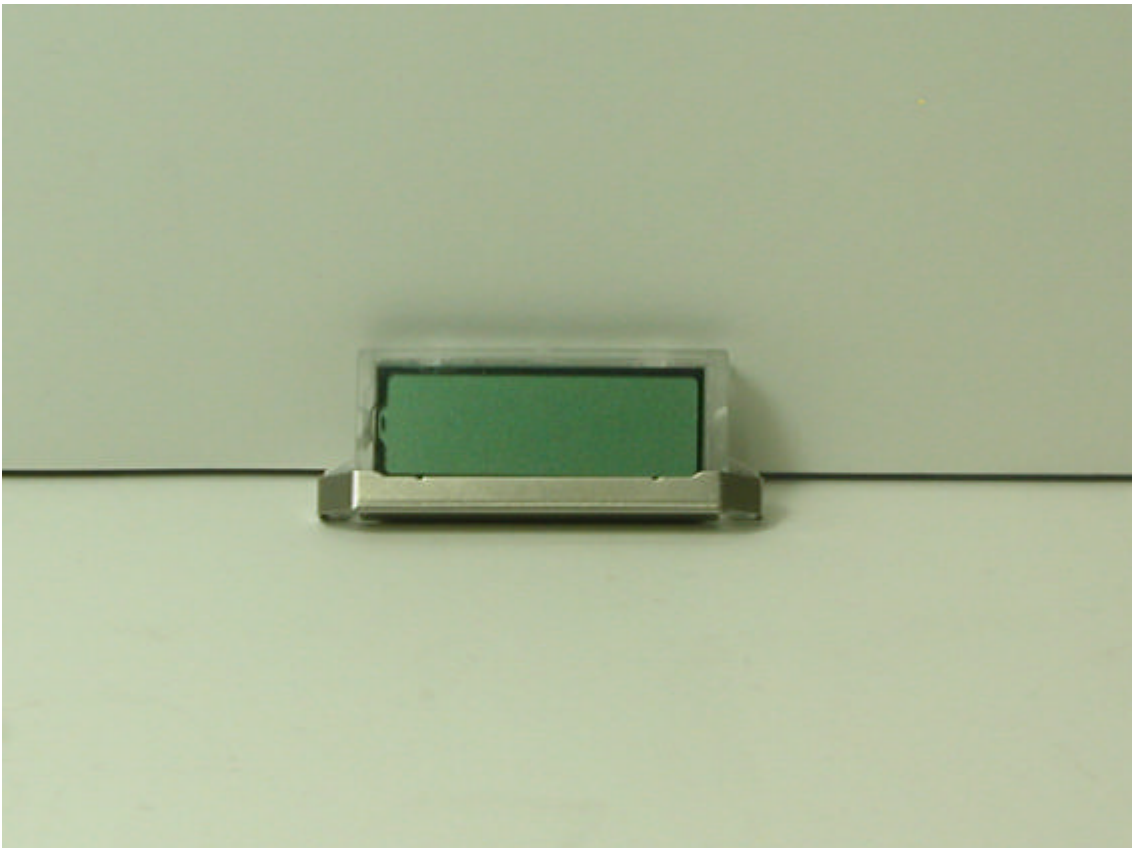
**Bottom of PCB**



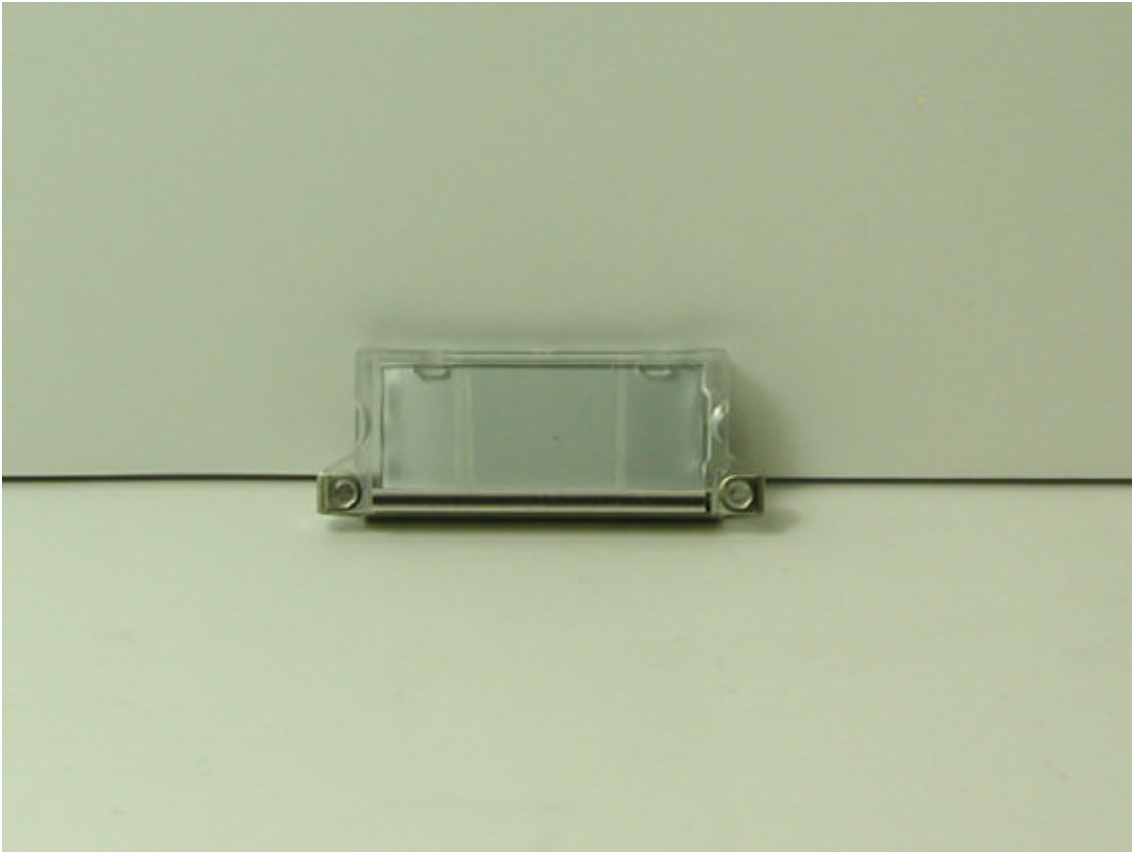
**Top of PCB without LCD**



**Front of LCD**



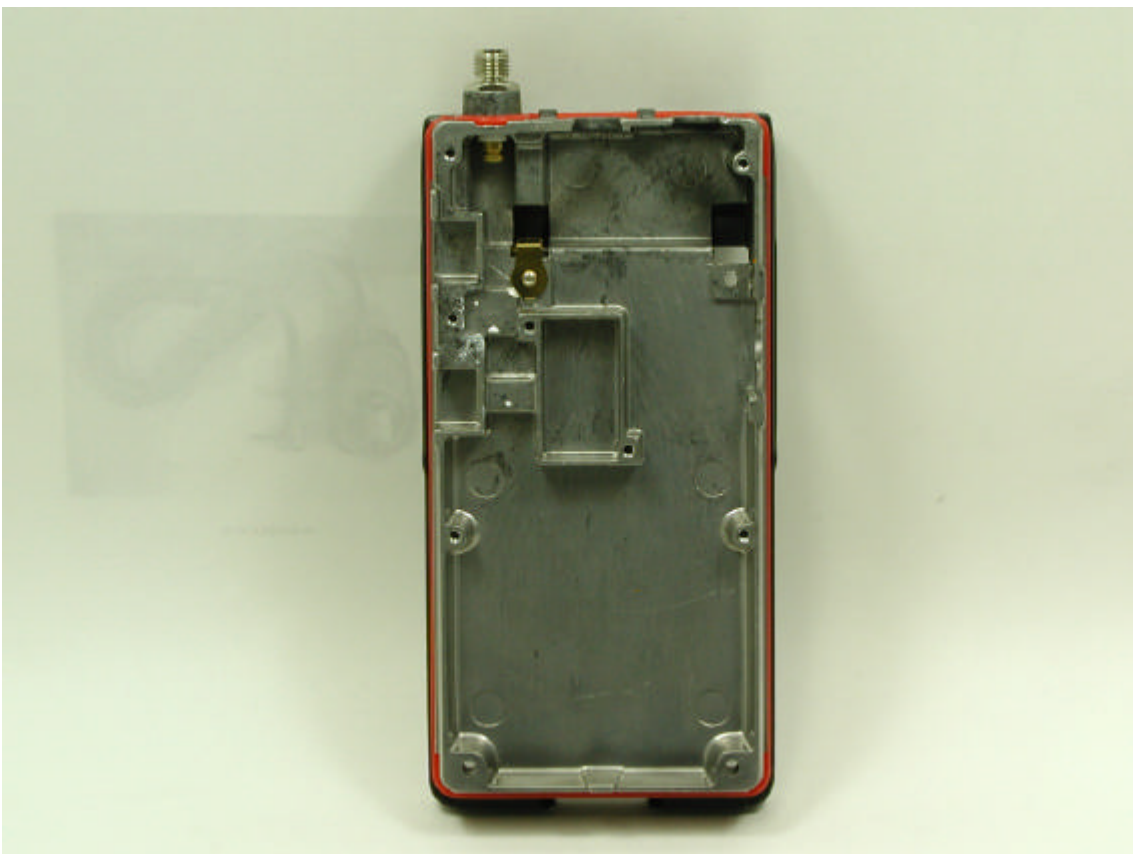
**Back of LCD**



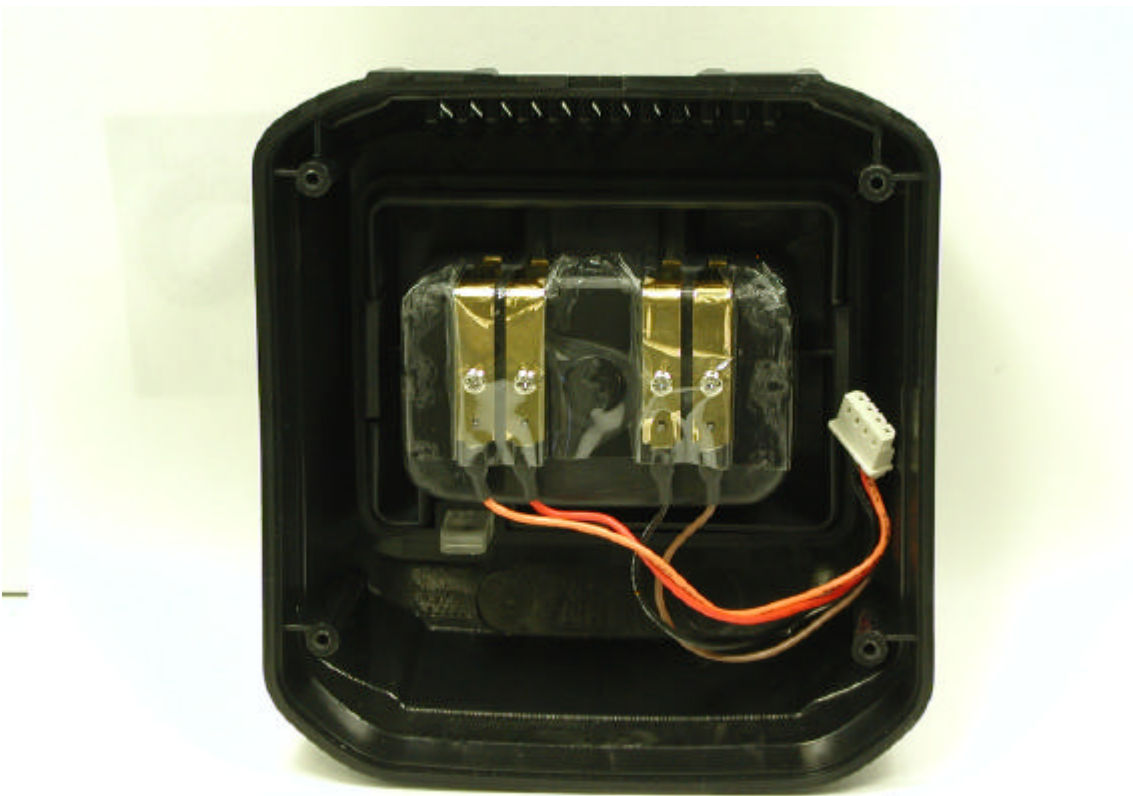
**Inside Front of Chassis**



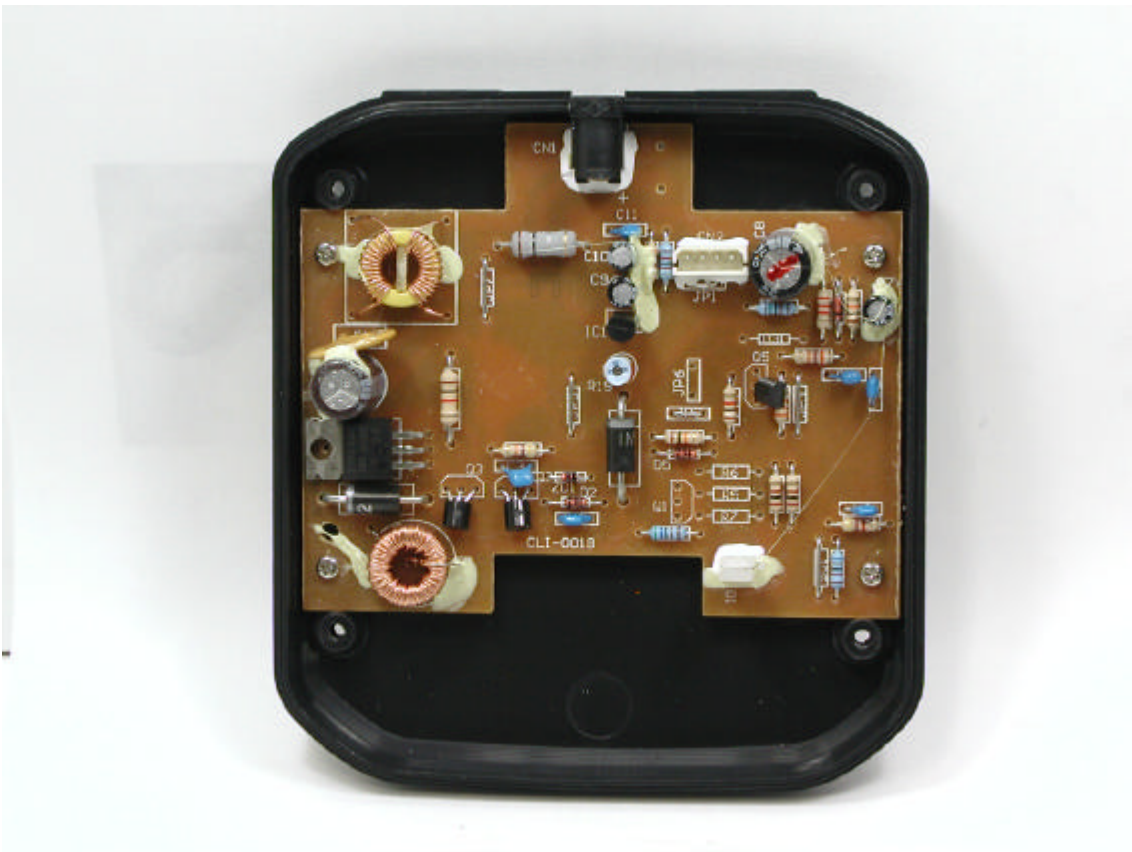
**Inside Back of Chassis**



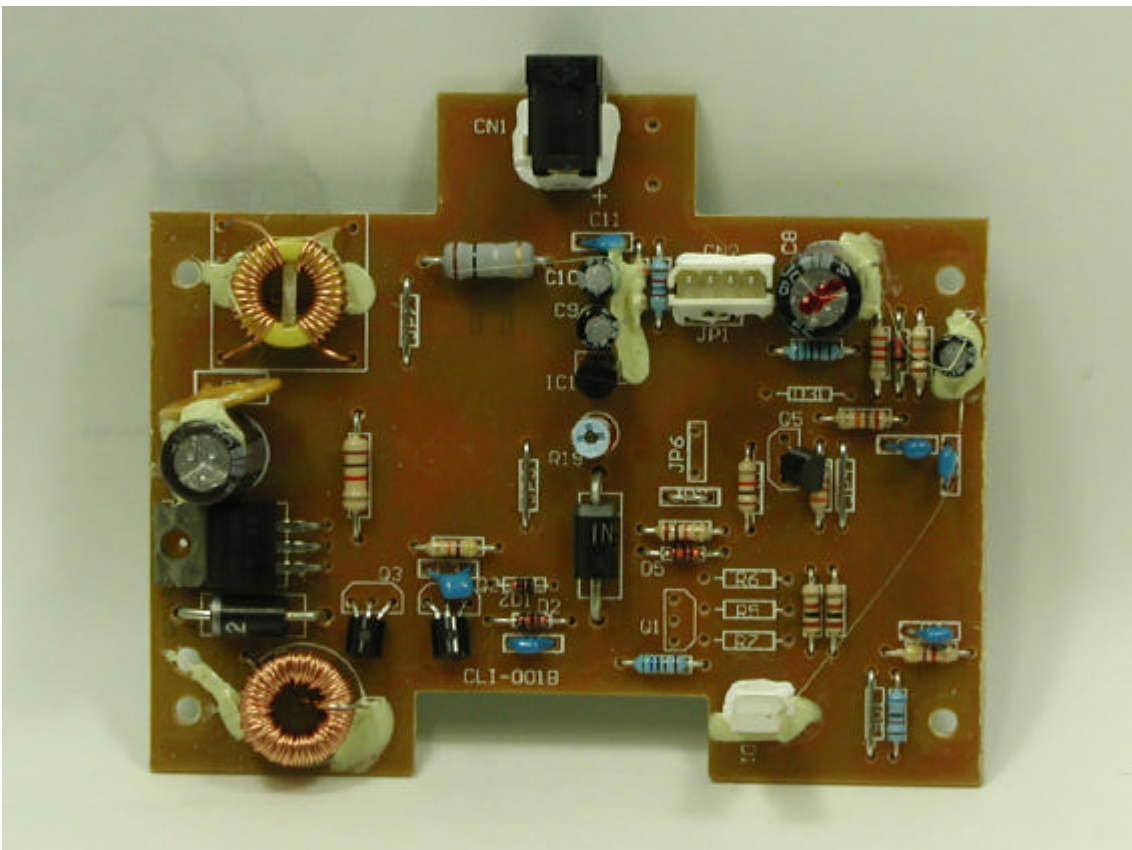
**Inside Top of Battery Charger**



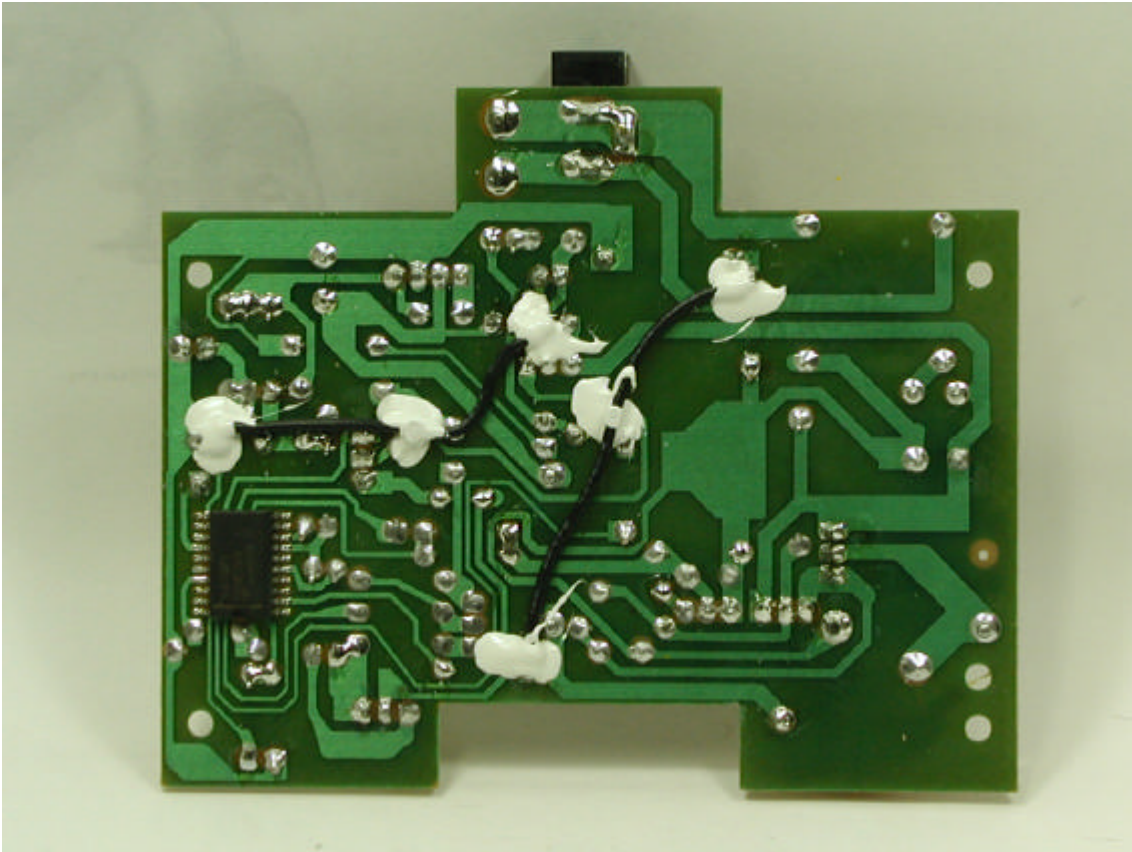
### Inside Bottom of Battery Charger



### Component Side of Battery Charger PCB



**Solder Side of Battery Charger PCB**



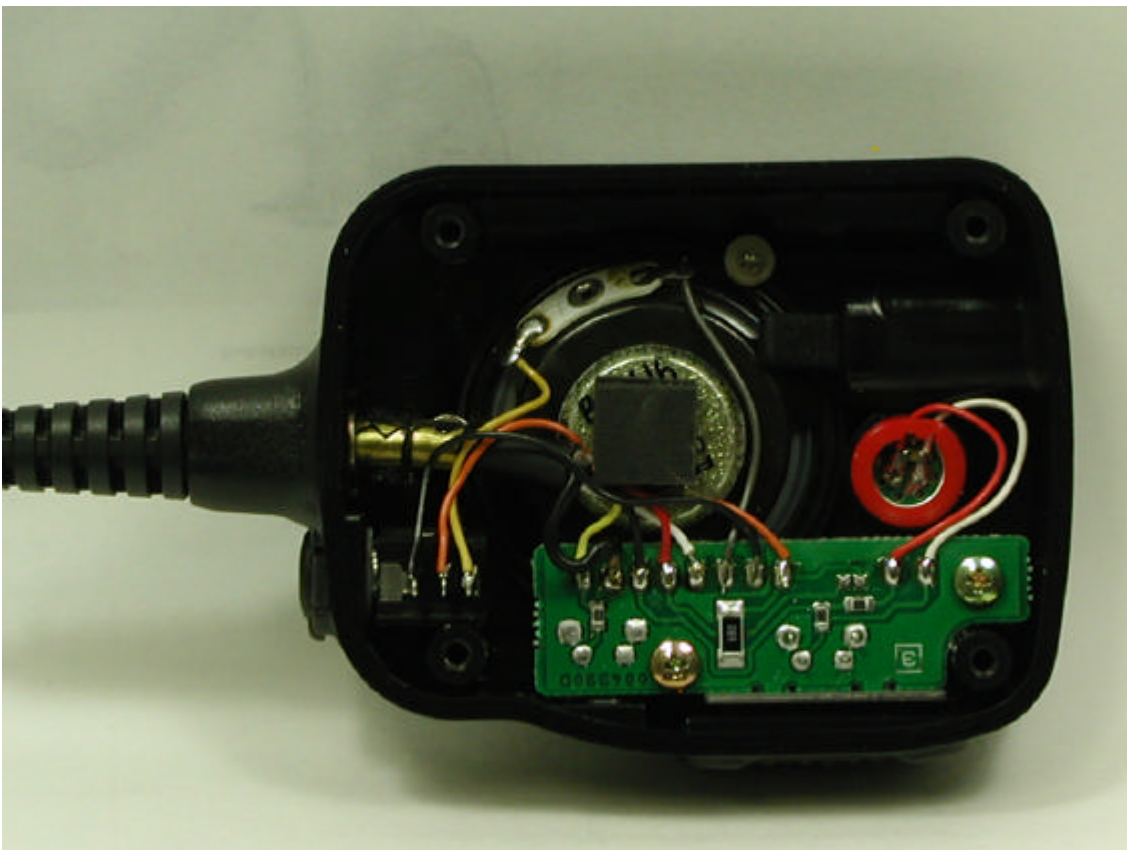
**Inside Top Battery Charger Chassis**



**Inside Bottom Battery Charger Chassis**



**Inside of Microphone**





**Inside of Front Microphone Chassis**



**Inside of Back Microphone Chassis**



## Inside of Microphone

