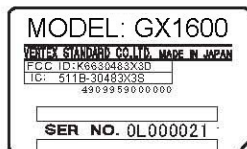


## ID / Part 15.19 and CAUTION drawings

### ID drawing



### Part 15.19 and CAUTION drawings

This device complies with part 15 of the FCC Rules. Operation is subject to the condition that this device does not cause harmful interference.

**⚠ CAUTION ⚠**  
Device restricted to occupational use to satisfy FCC RF exposure compliance. See owners manual for specific operating requirement.

### Label location



PRODUCTION No.	<b>GX1600</b>
TITLE	<b>LABEL DRAWING</b>

**Vertex Standard Co., Ltd.**