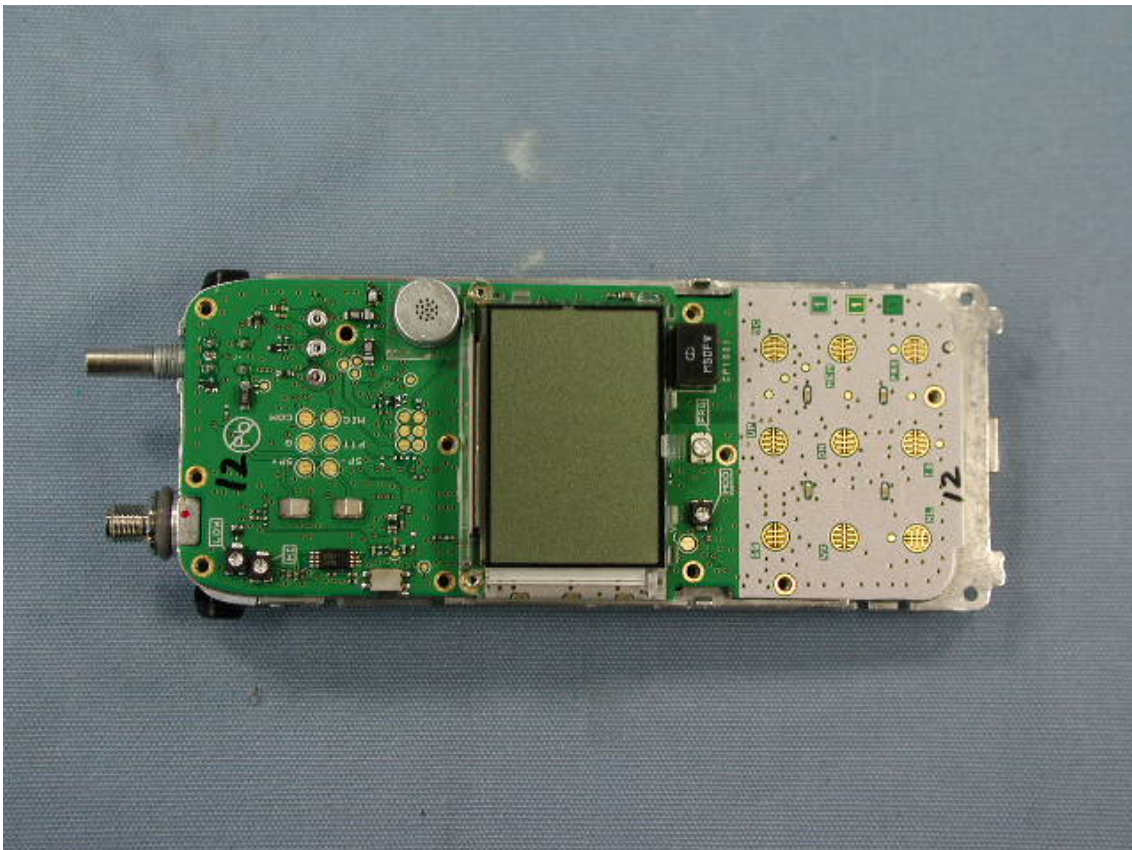


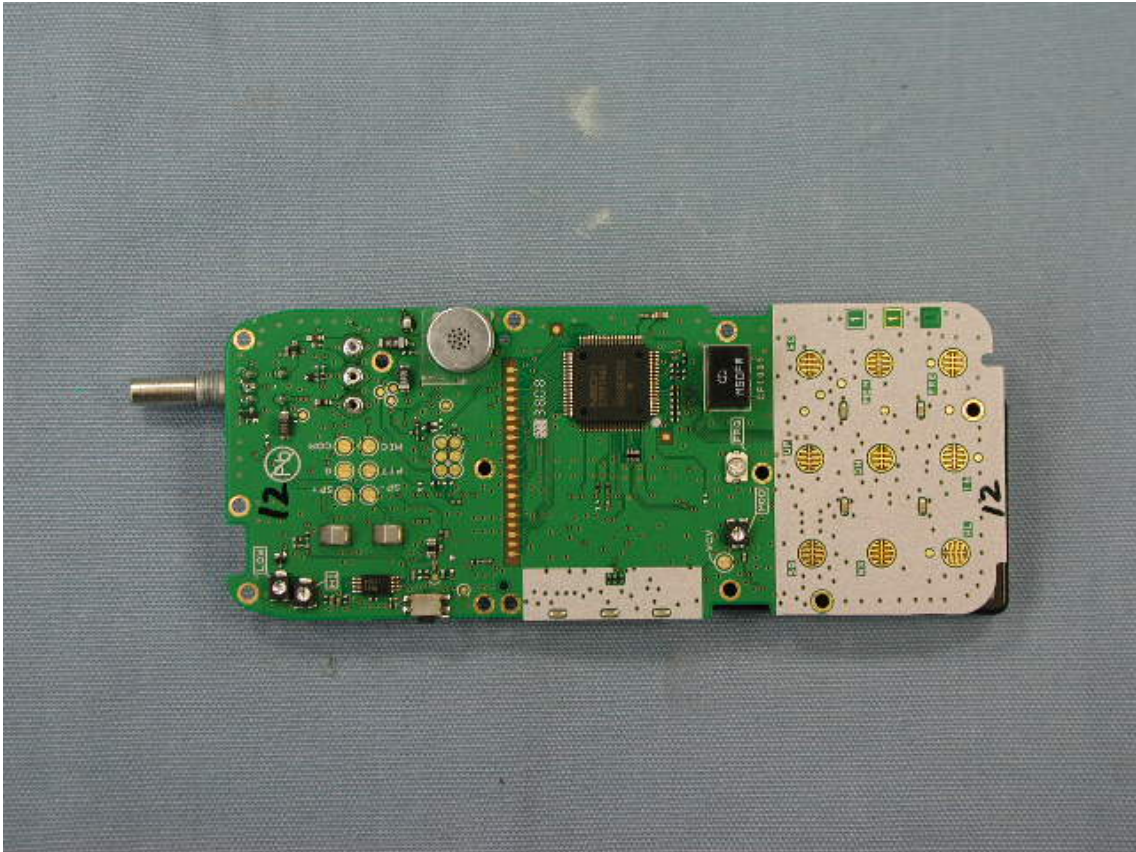
View of Rear (Removed Battery)



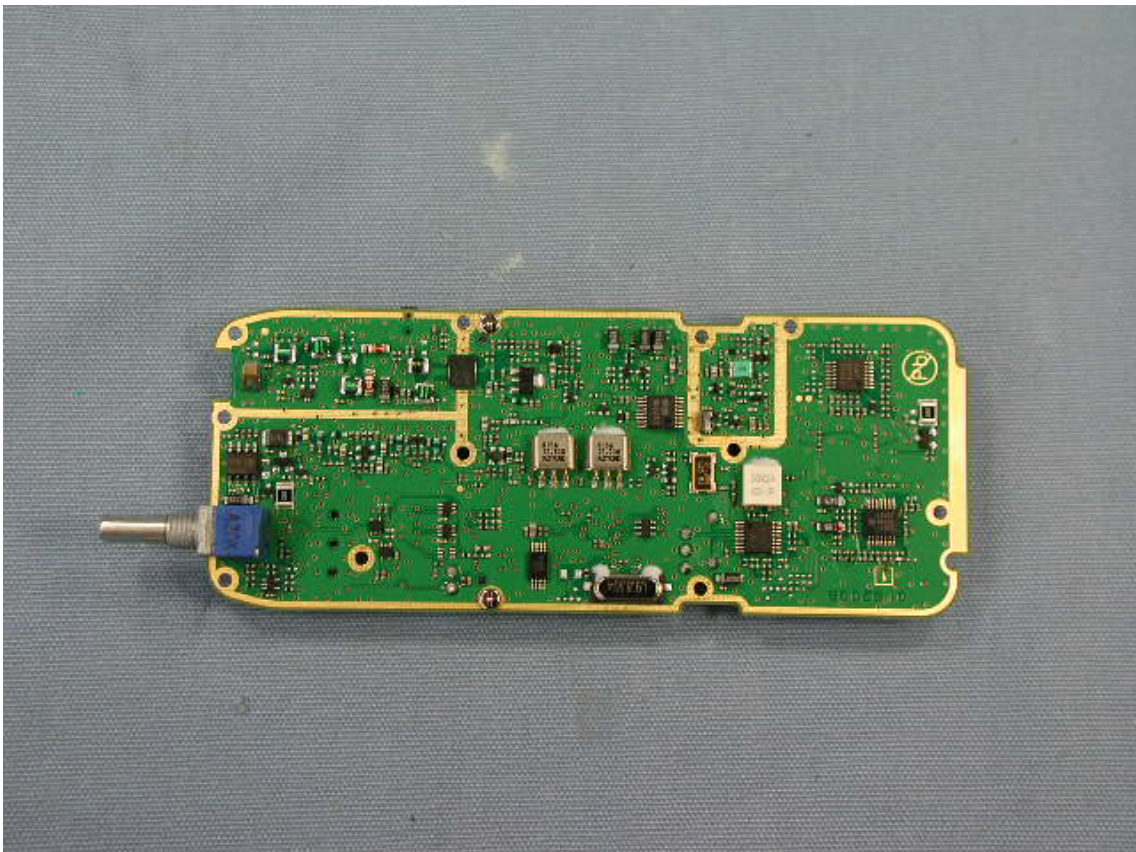
Side-A of MAIN-UNIT with LCD



Side-A of MAIN-UNIT without LCD



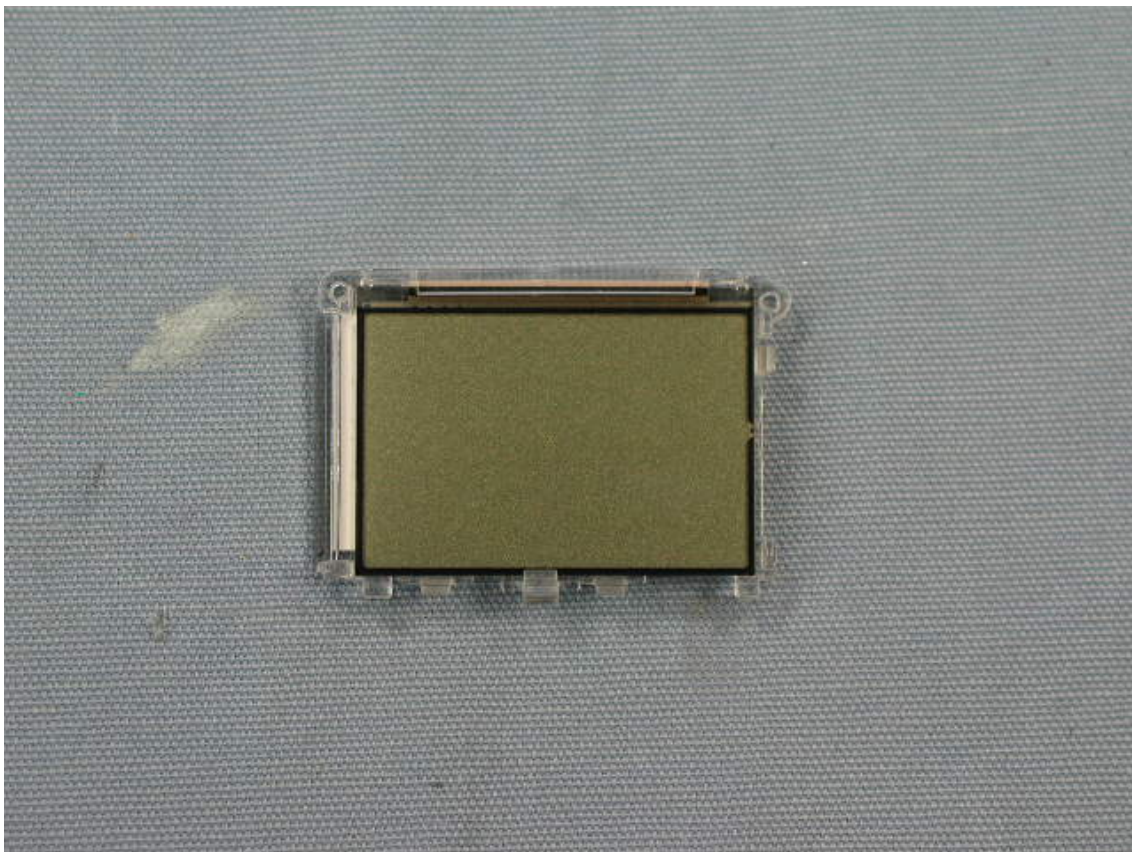
Side-B of MAIN-UNIT



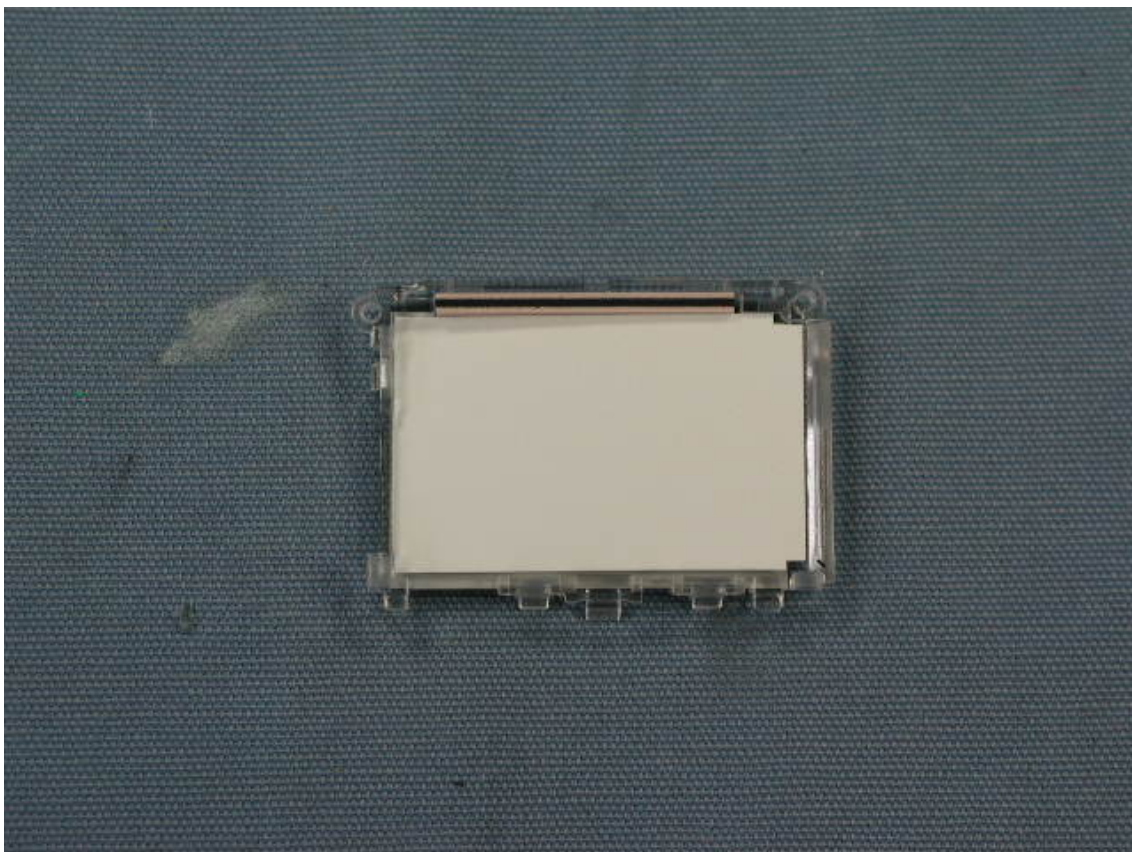
View of chassis (Removed Main Unit)



LCD (Front)



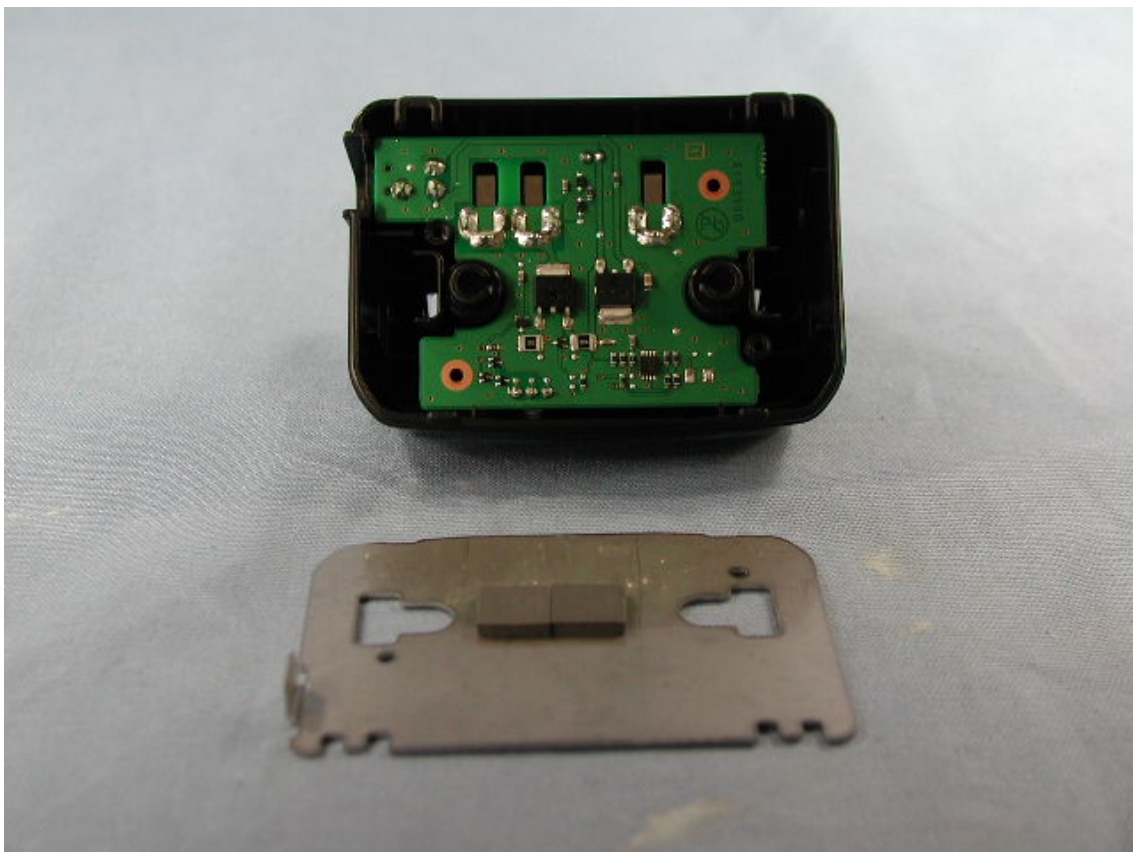
LCD (Back)



Inside of front panel



CD-46 (Side B)



CD-46 (Side A)

