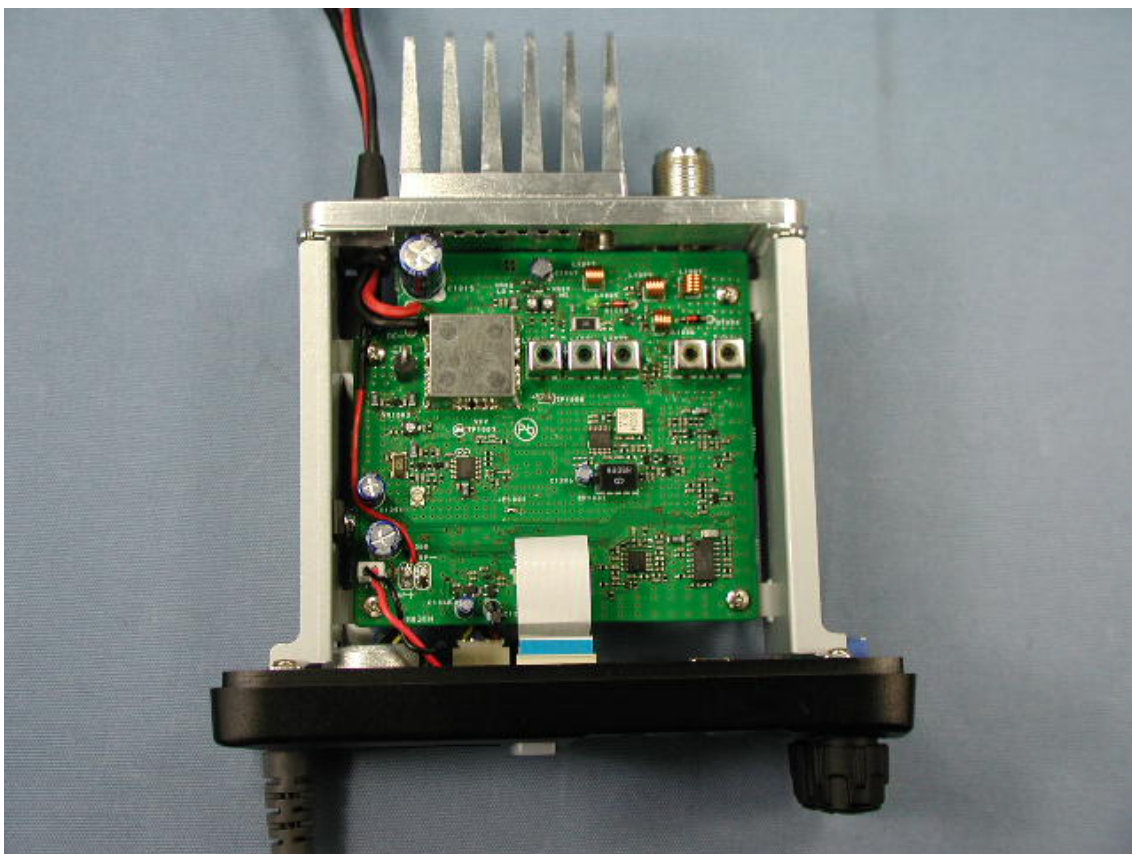
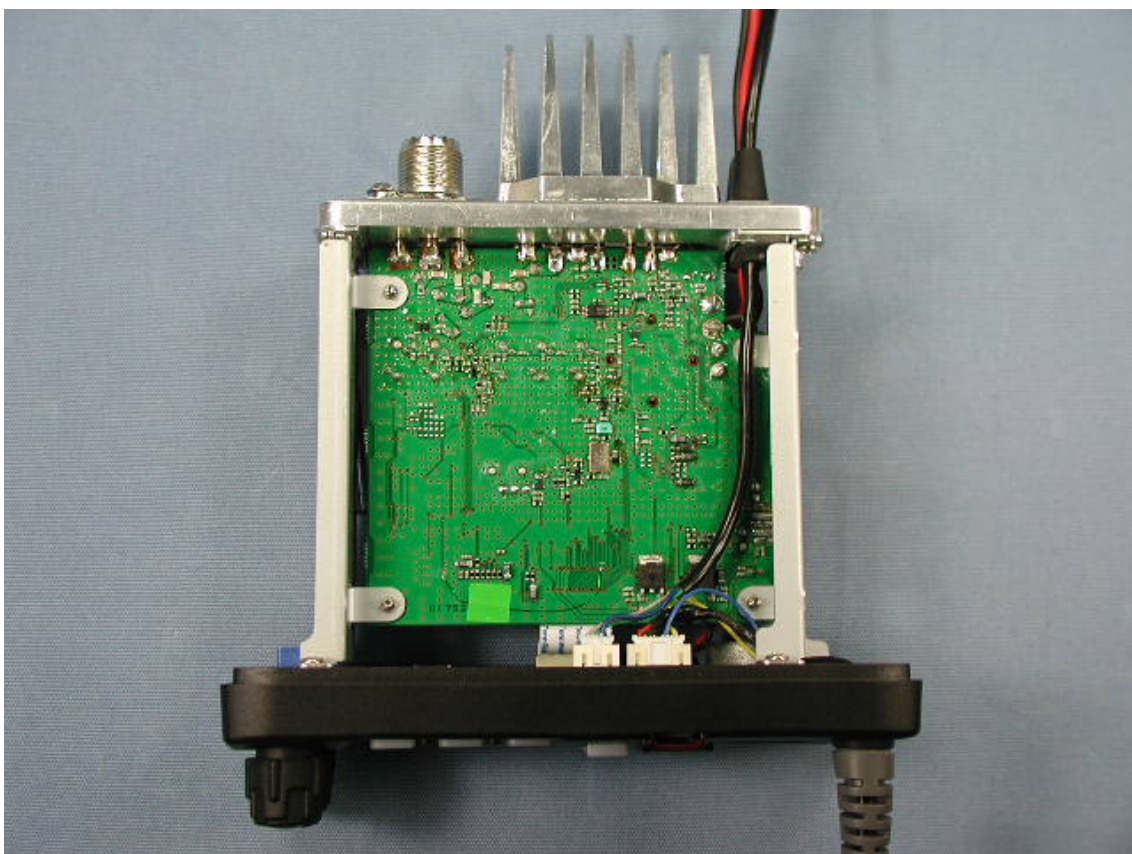


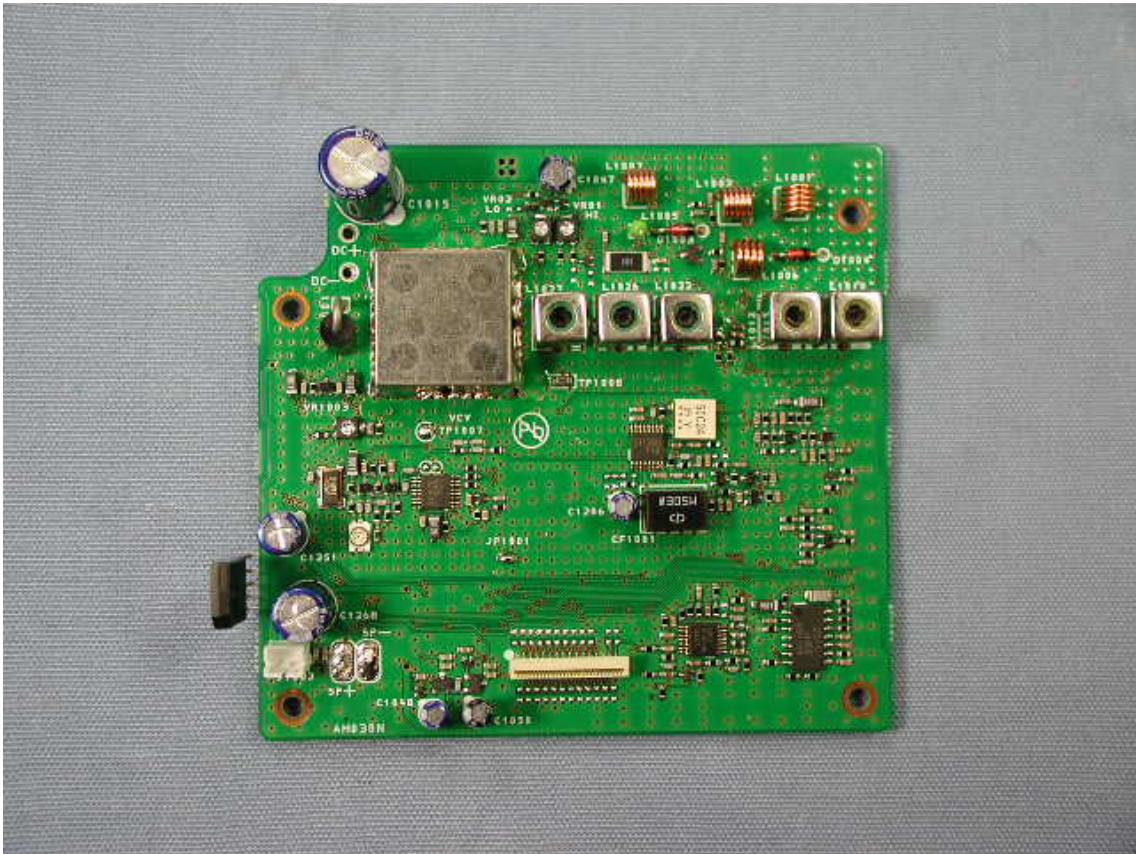
Top of EUT without case



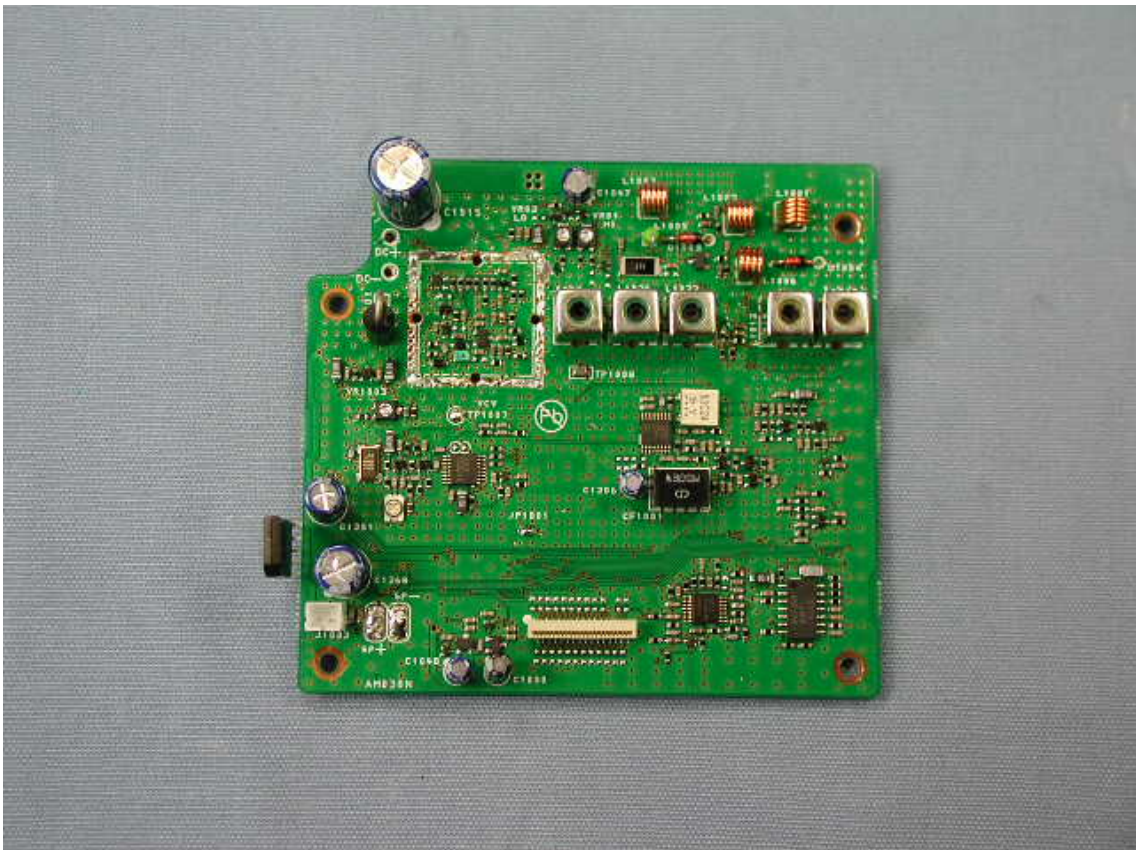
Bottom of EUT without case



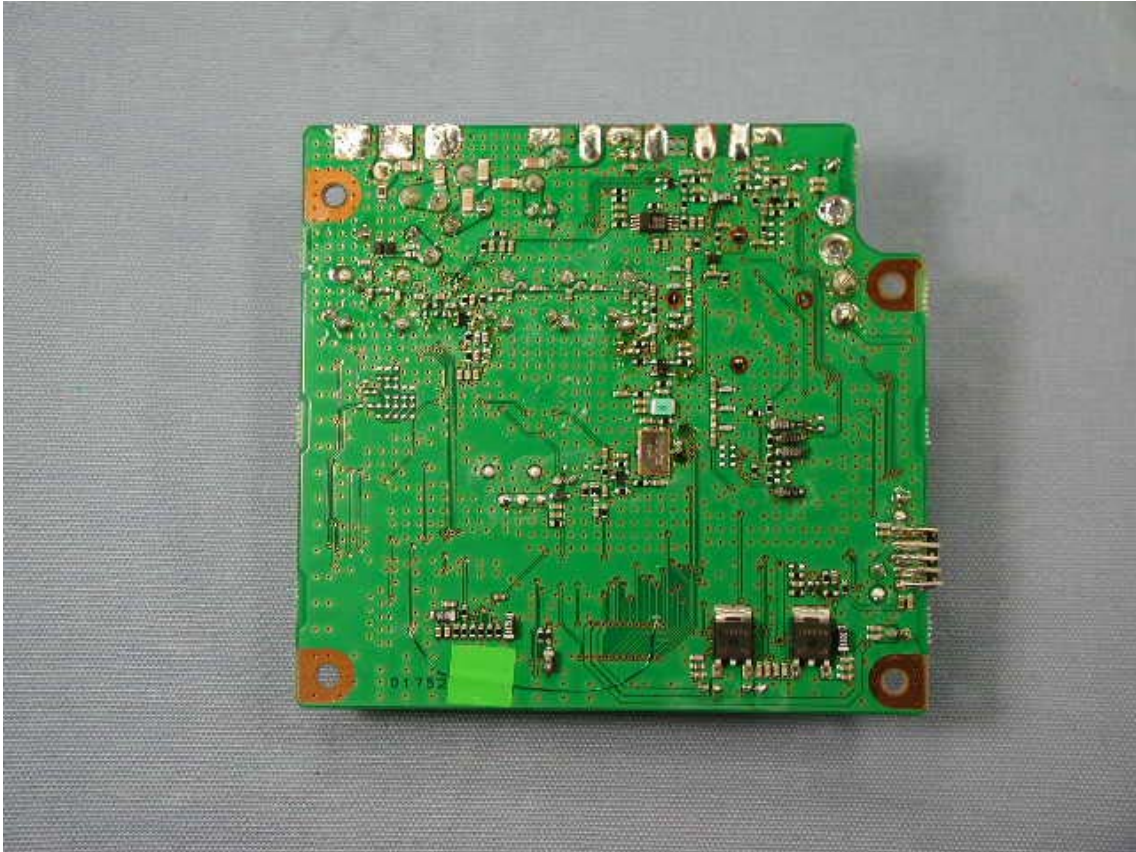
Side-A of MAIN-UNIT with shield cases



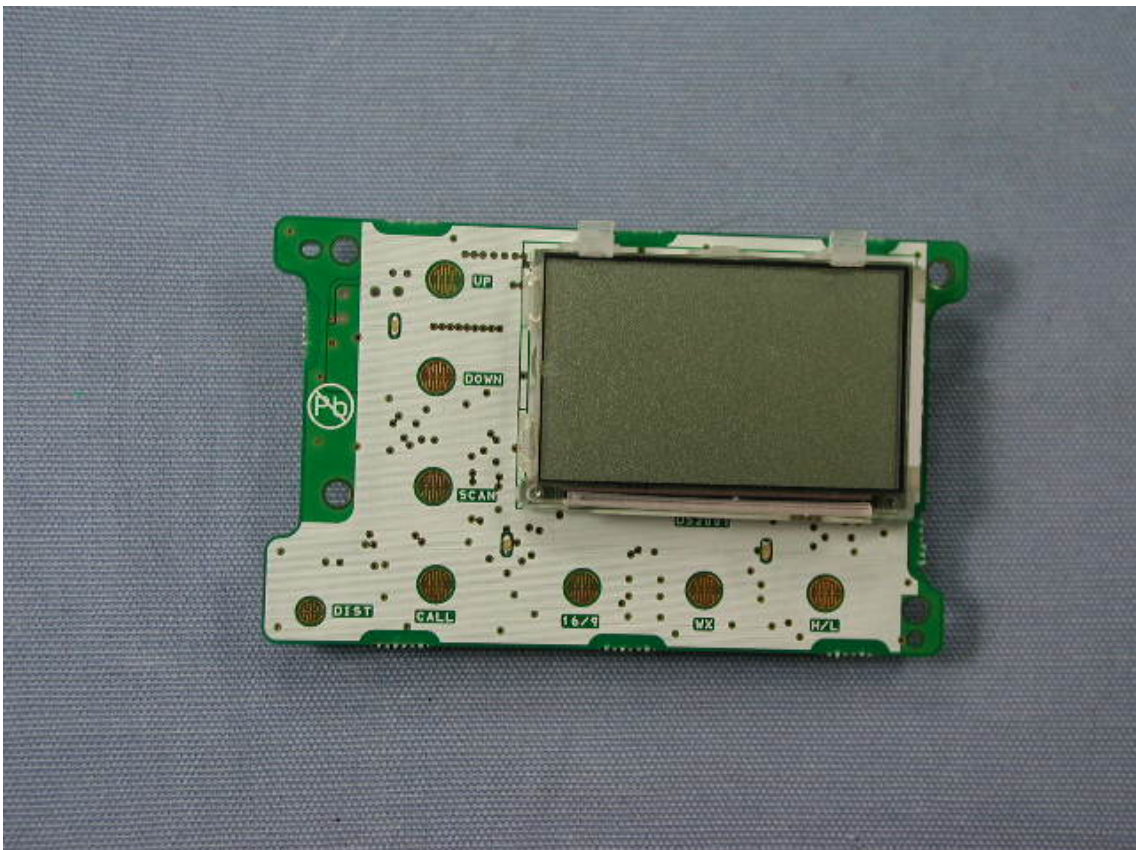
Side-A of MAIN-UNIT without shield cases



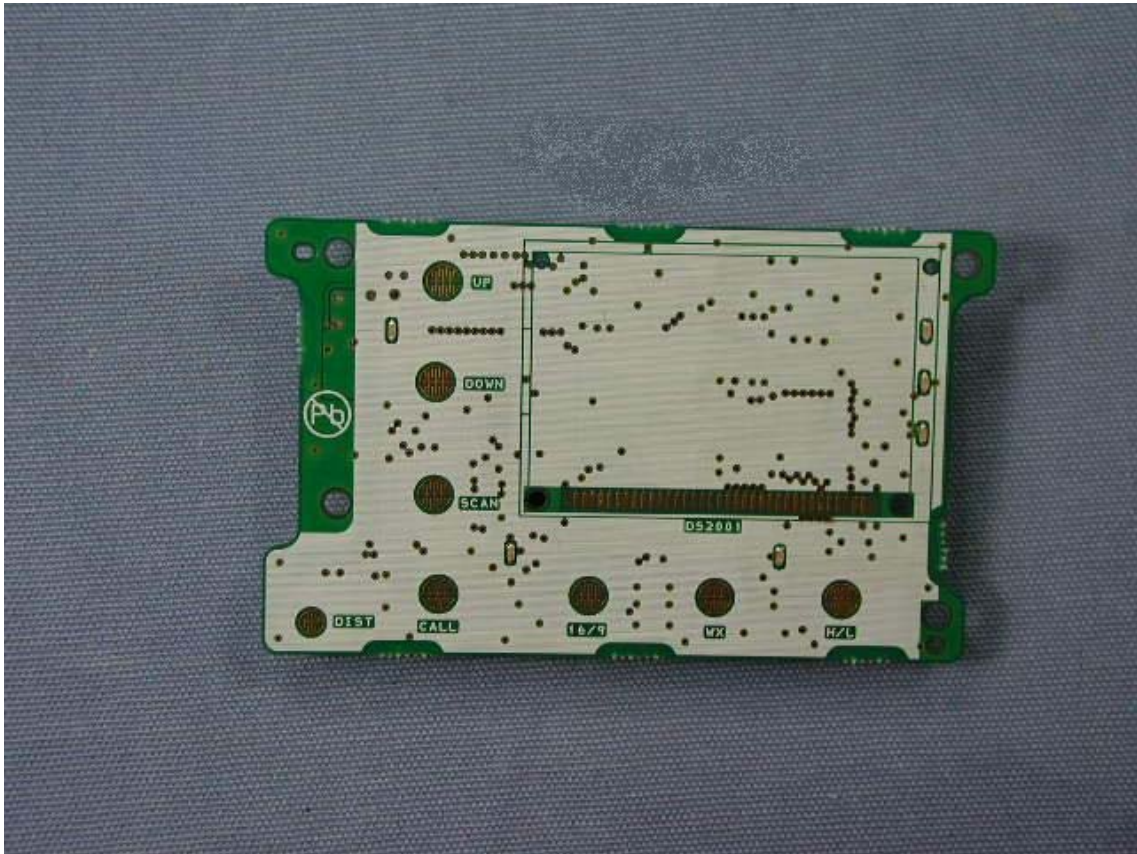
Side-B of MAIN-UNIT



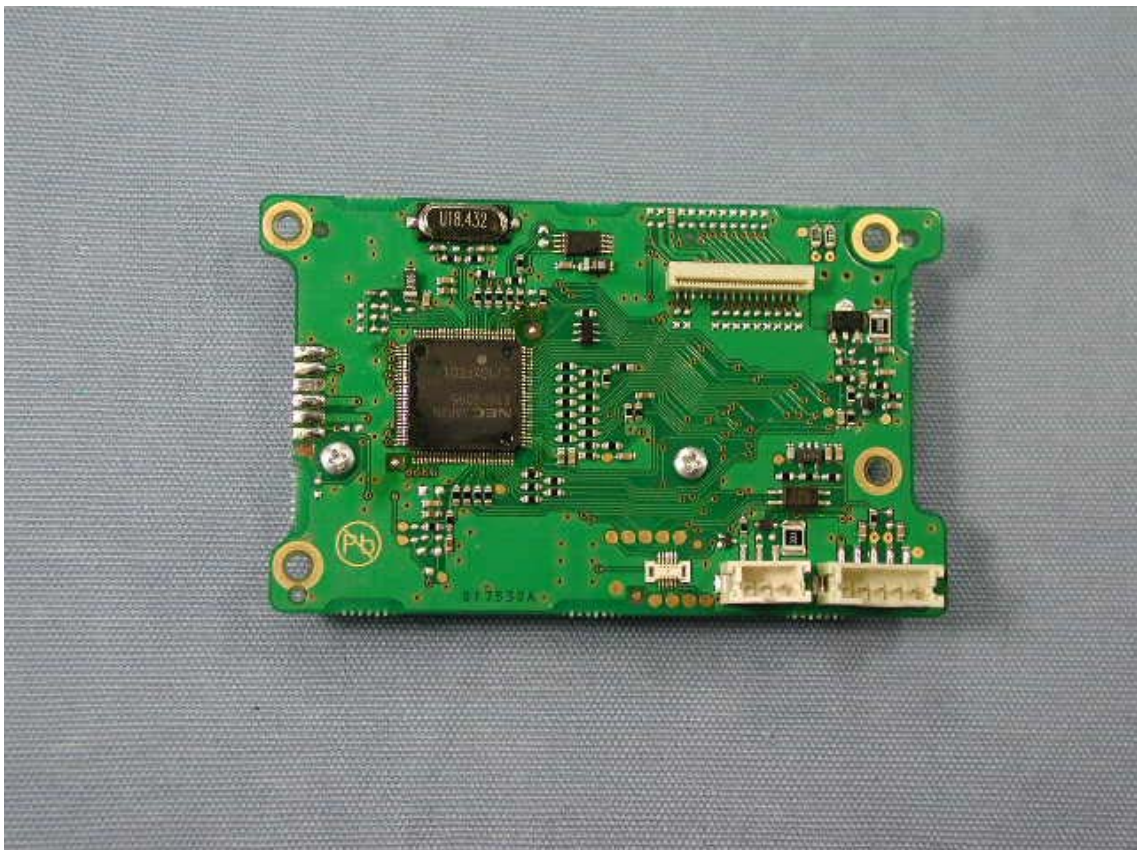
Side-A of CNTL-UNIT with LCD



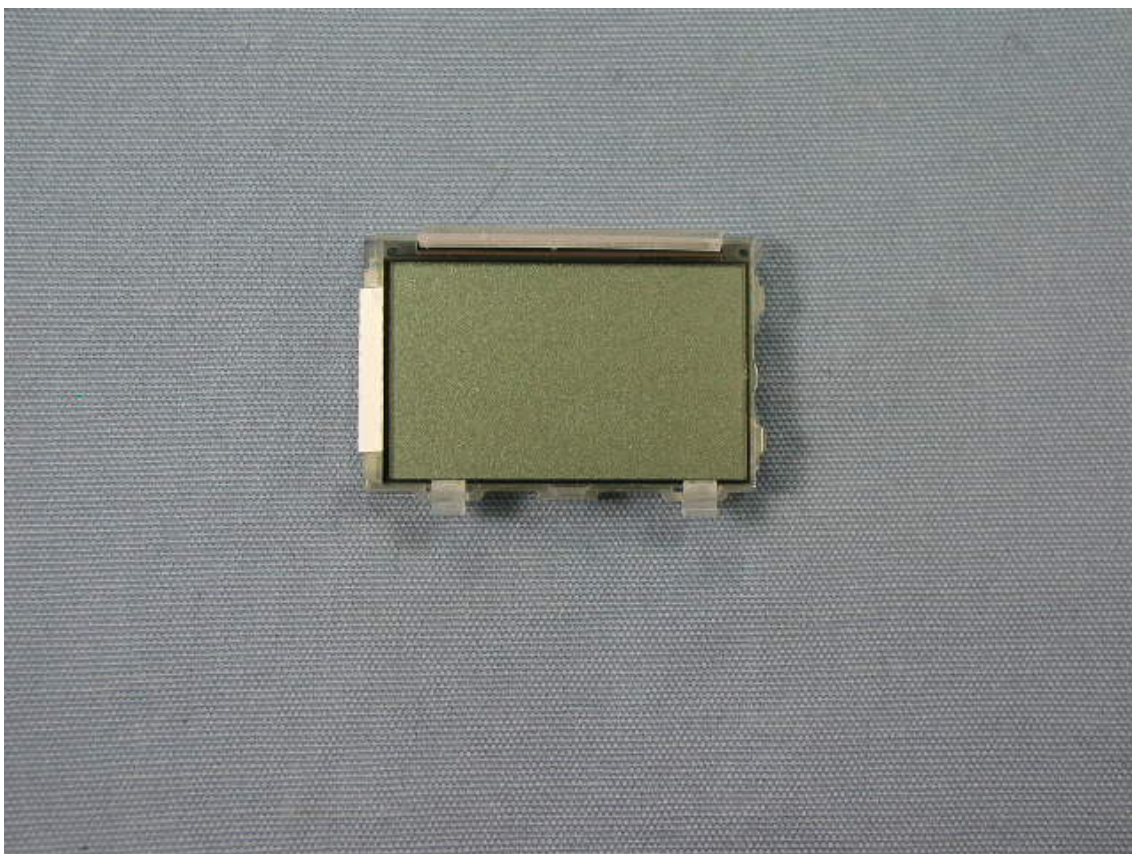
Side-A of CNTL-UNIT without LCD



Side-B of CNTL-UNIT



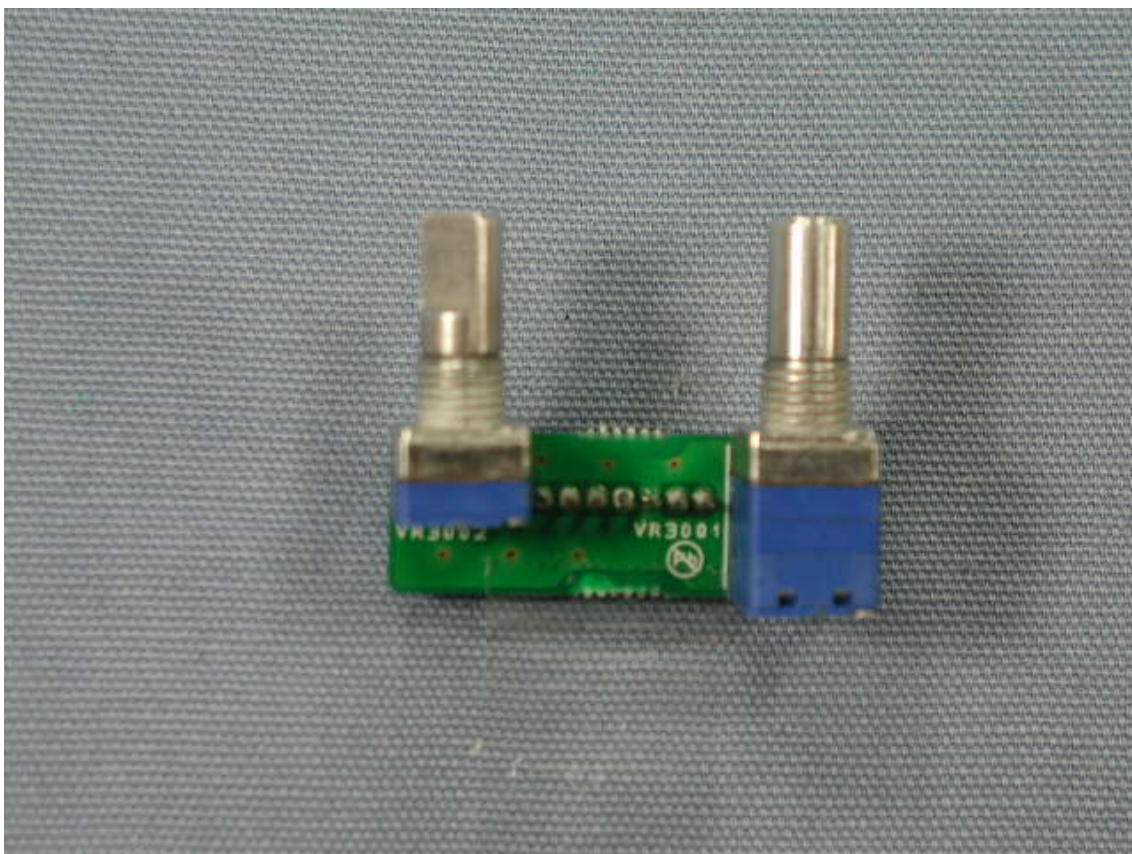
Front of LCD



Rear of LCD



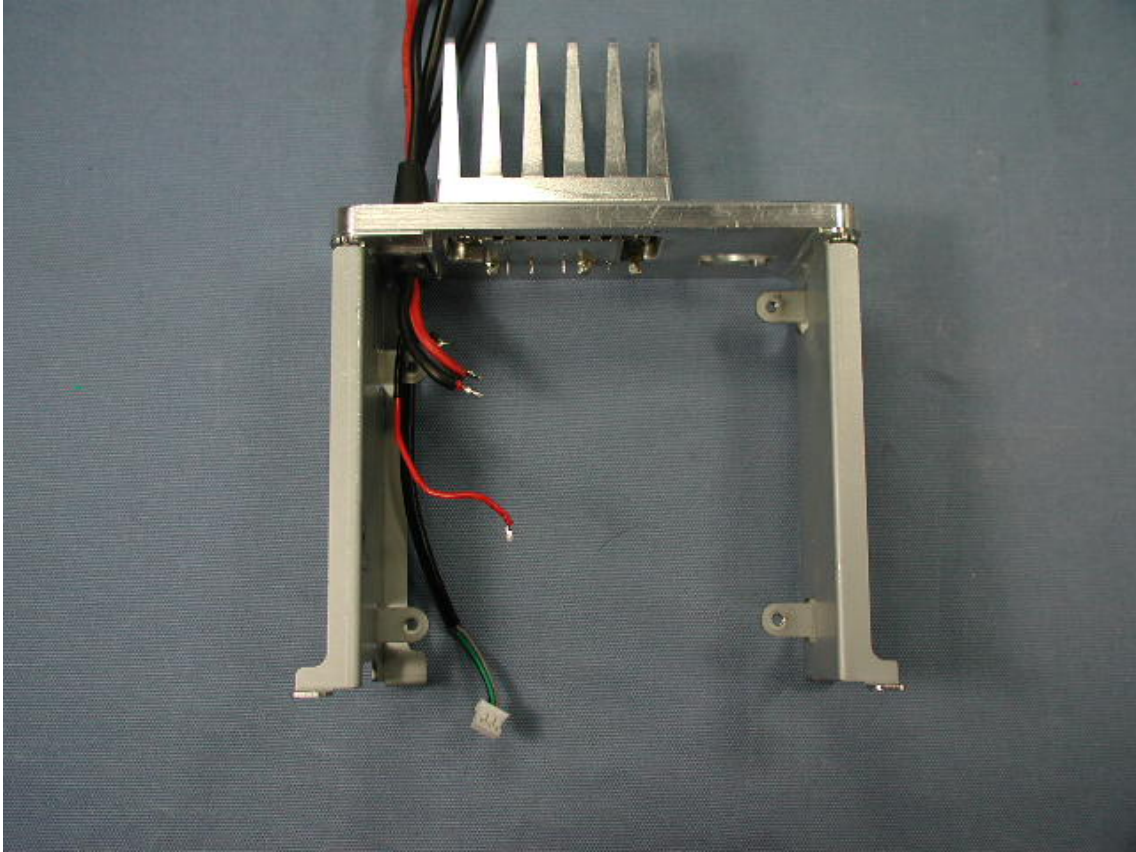
Side-A of VR-UNIT



Side-B of VR-UNIT



chassis



Inside of panel



Inside of microphone (1)



Inside of microphone (2)

