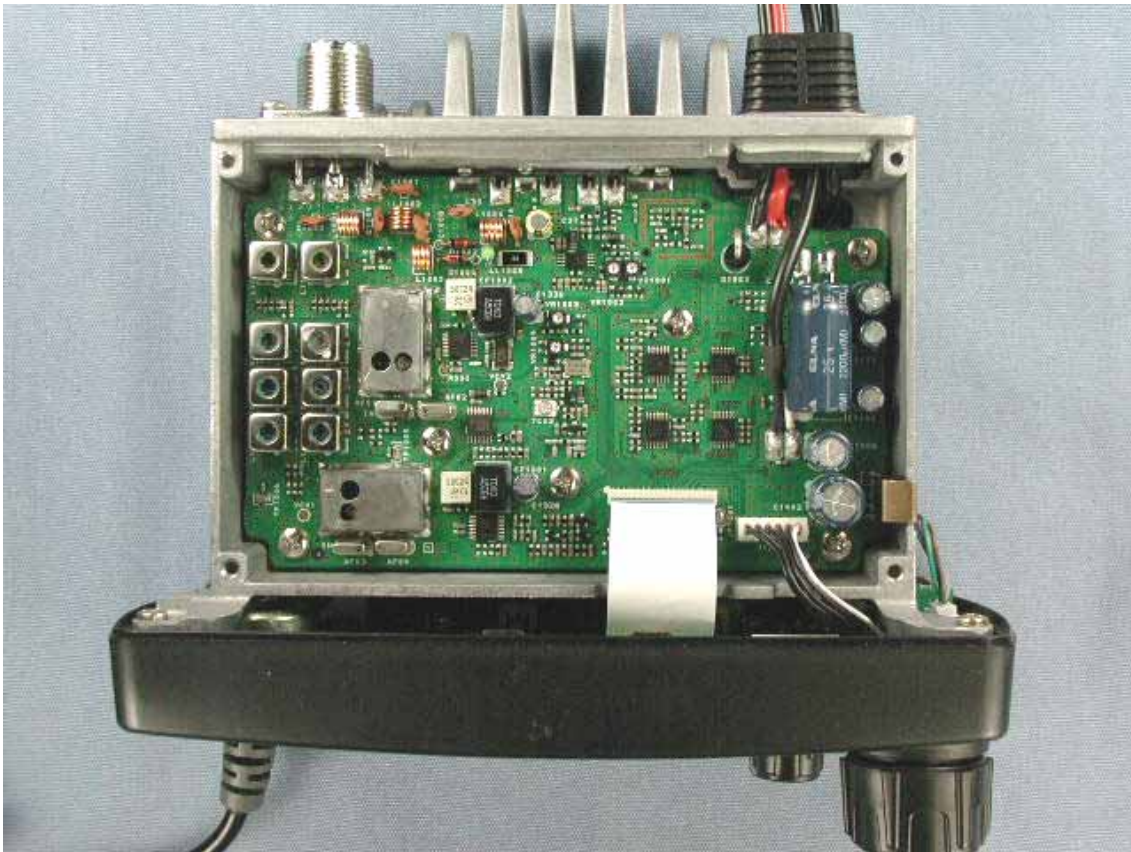
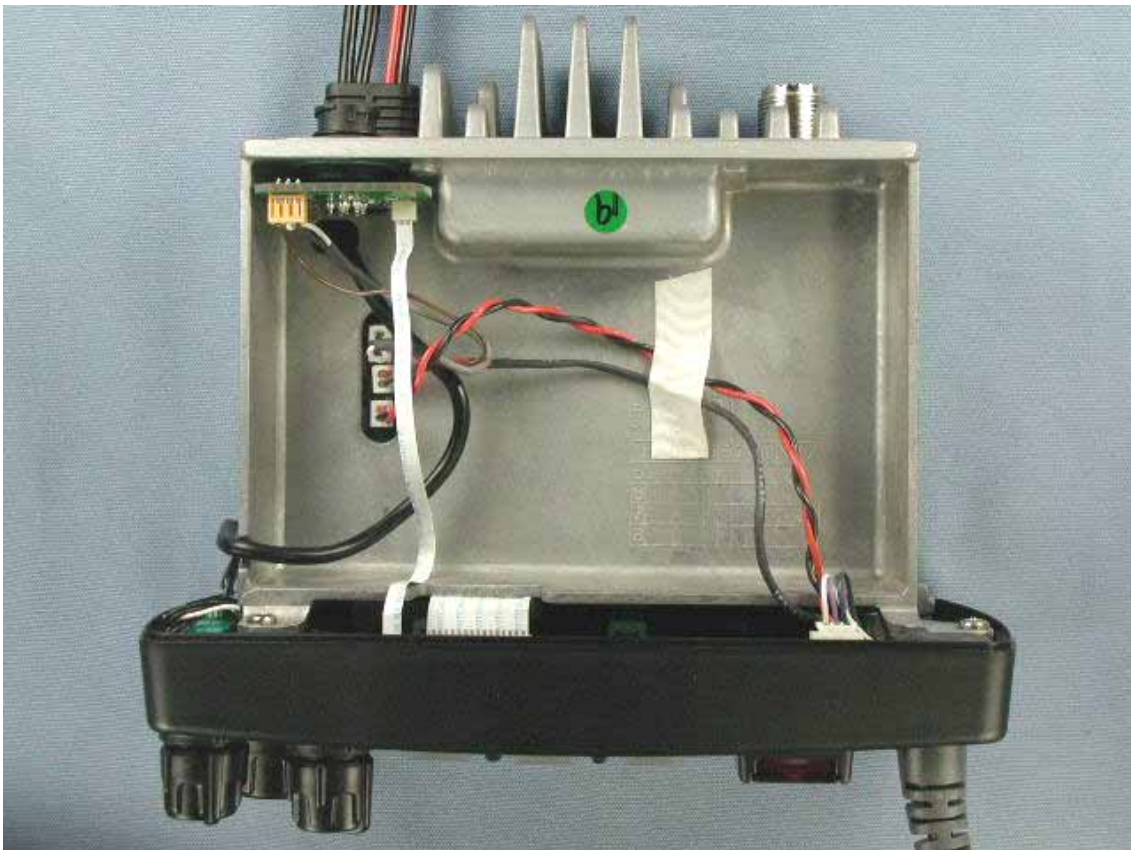


Top of EUT without case

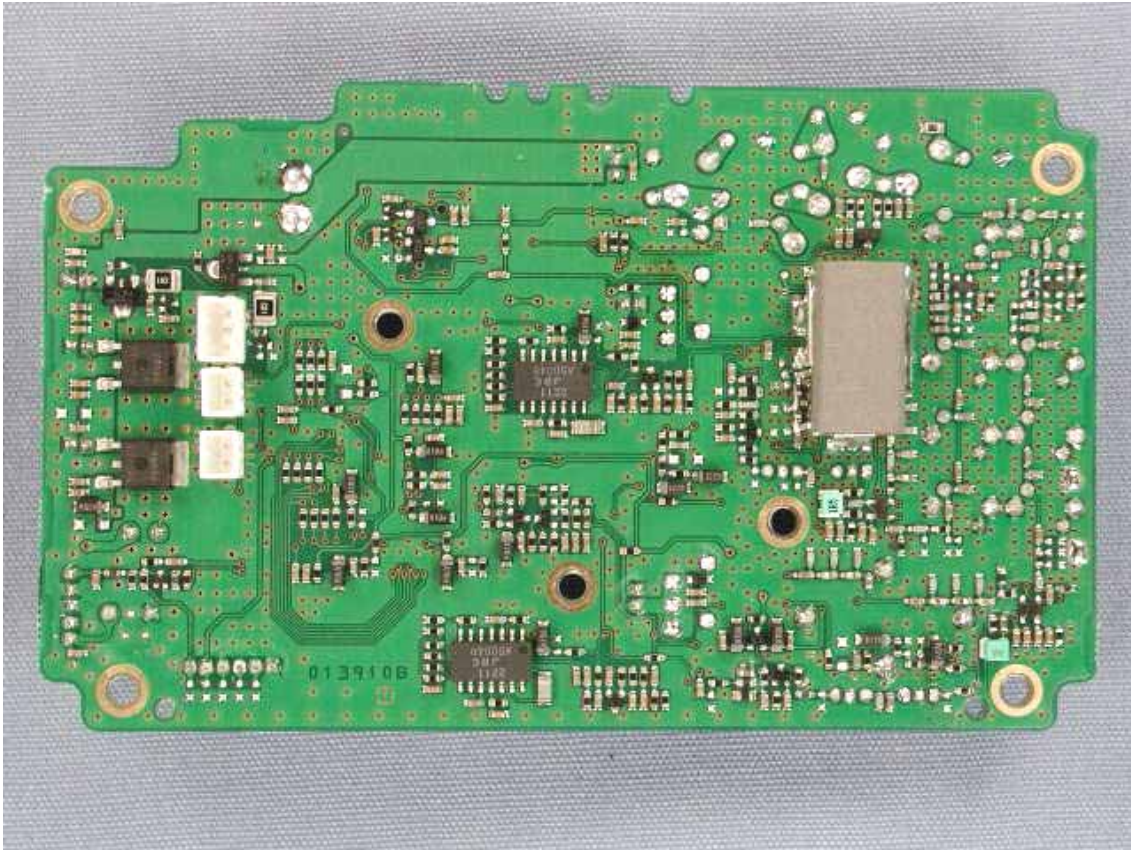


Bottom of EUT without case

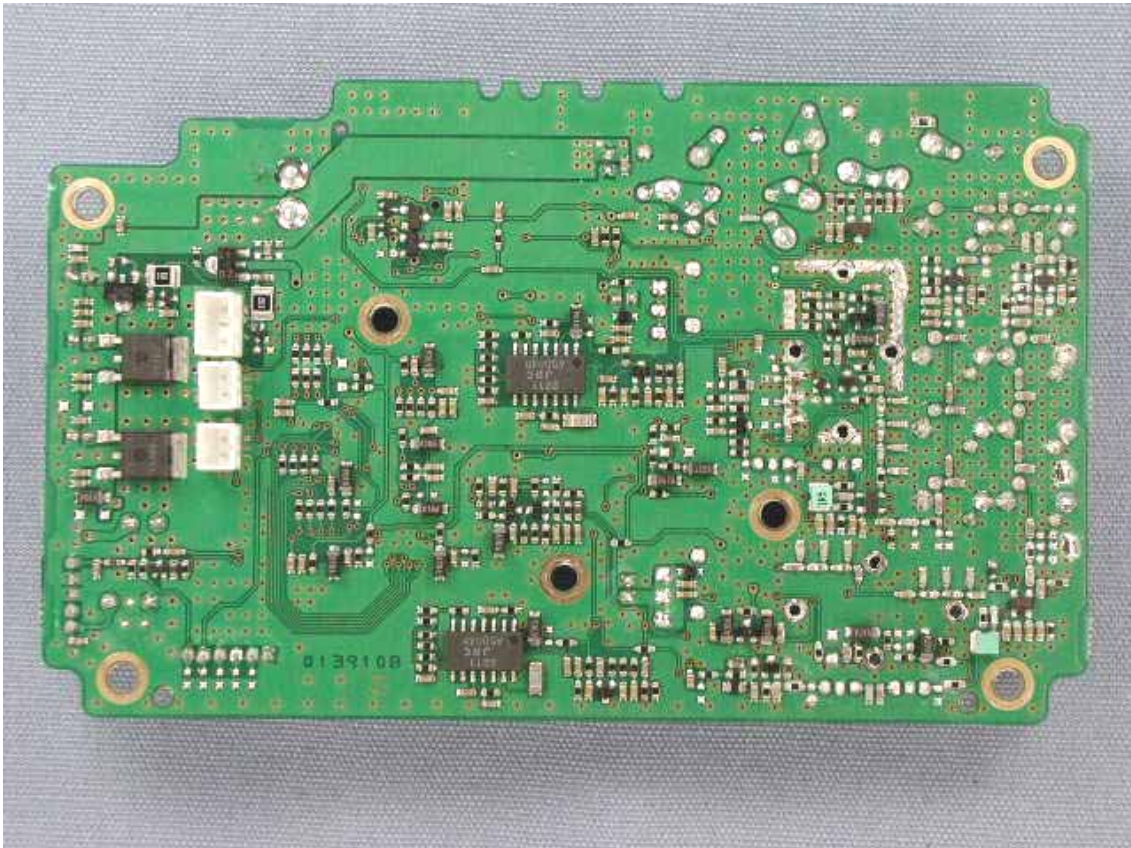




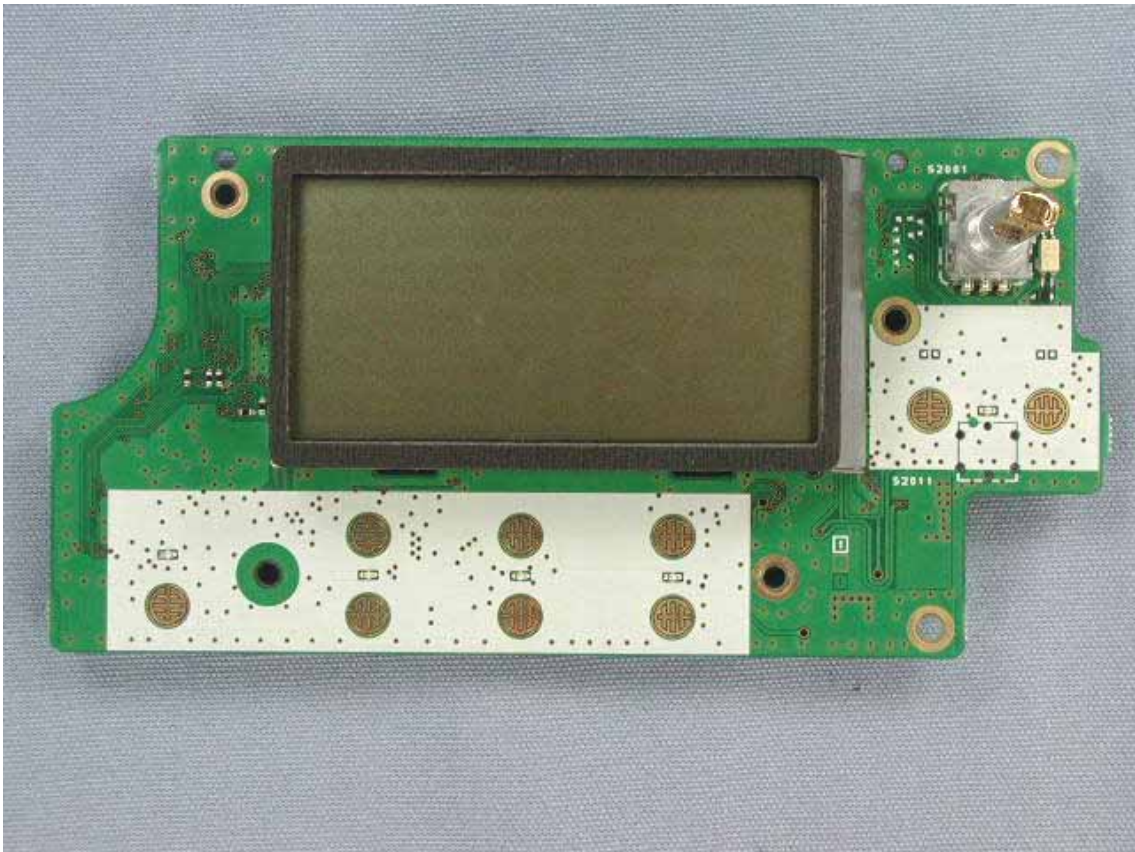
Side-B of MAIN-UNIT with shield case



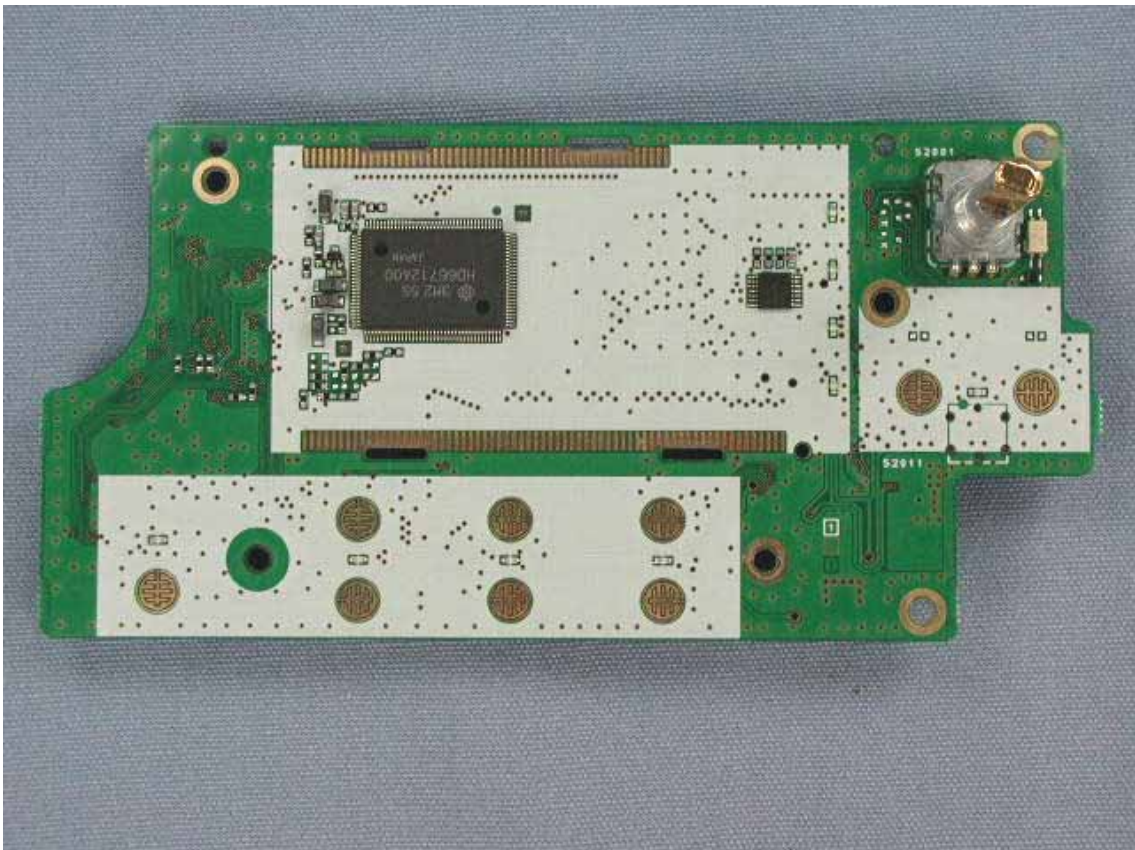
Side-B of MAIN-UNIT without shield case



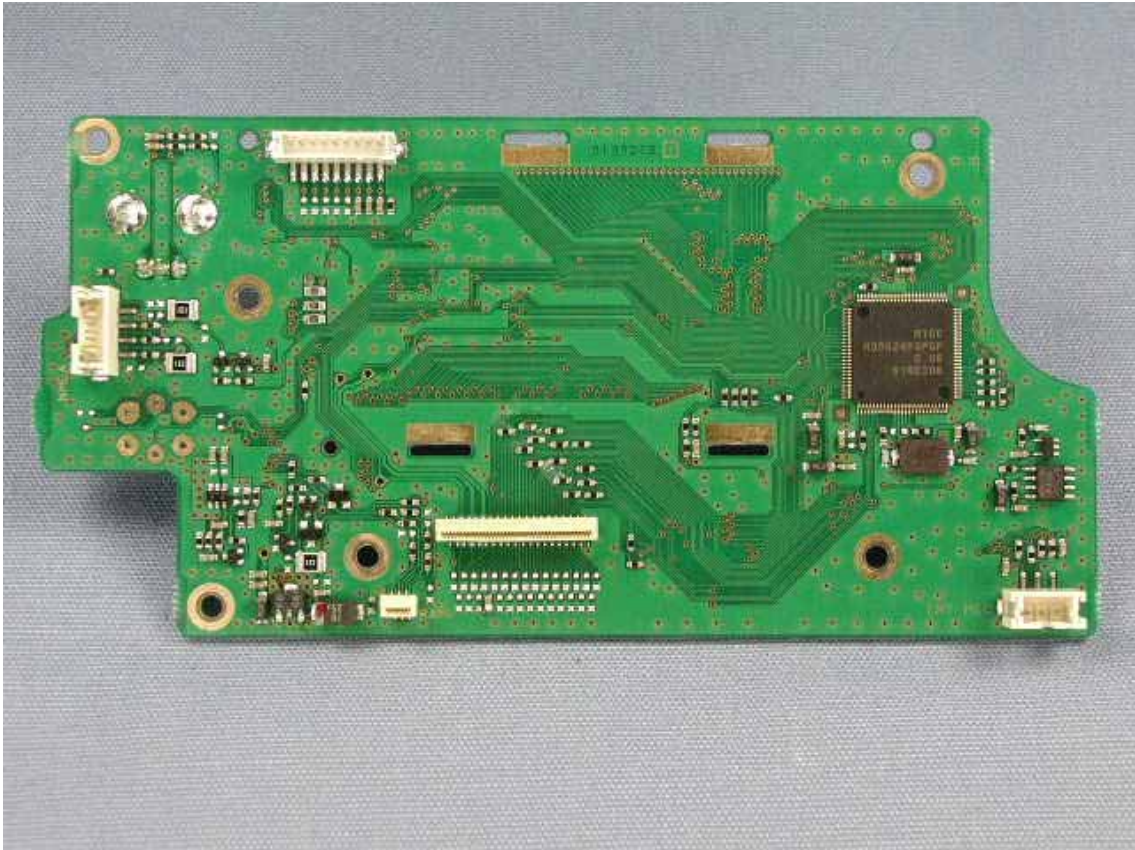
Side-A of CNTL-UNIT with LCD



Side-A of CNTL-UNIT without LCD



Side-B of CNTL-UNIT



Front of LCD



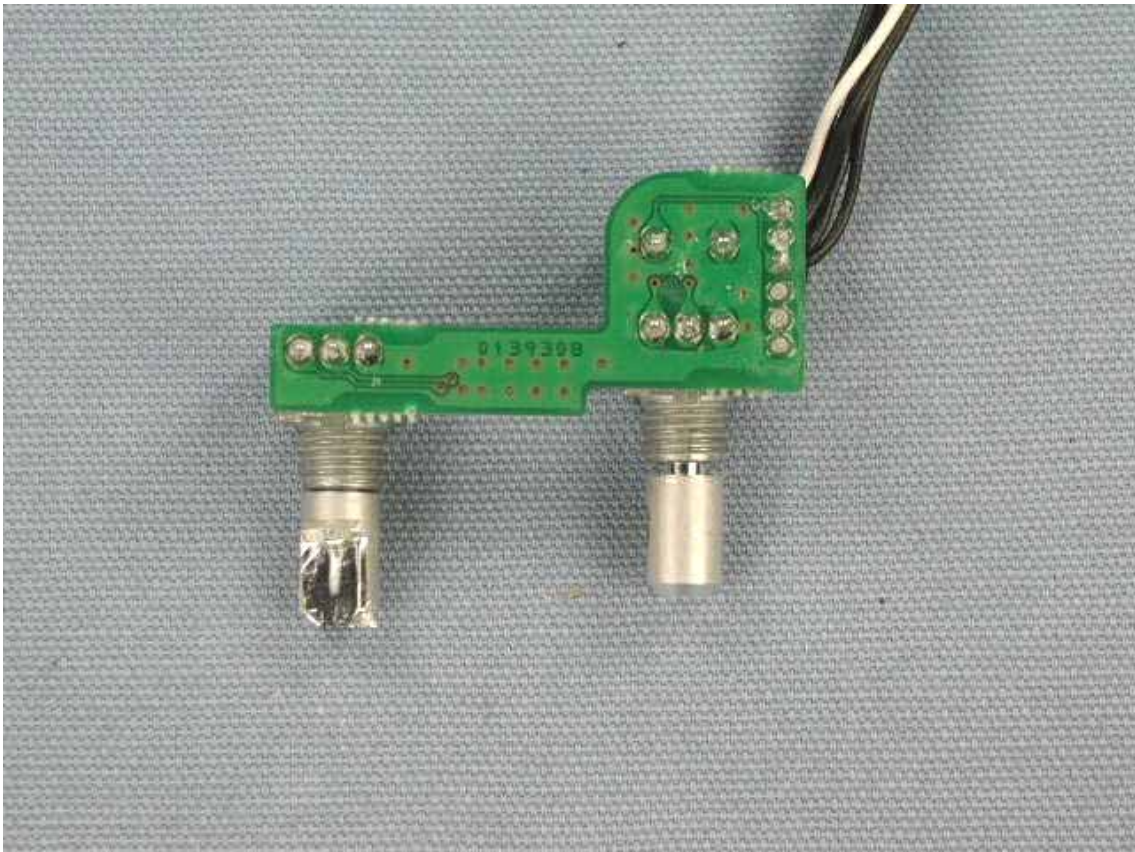
Rear of LCD



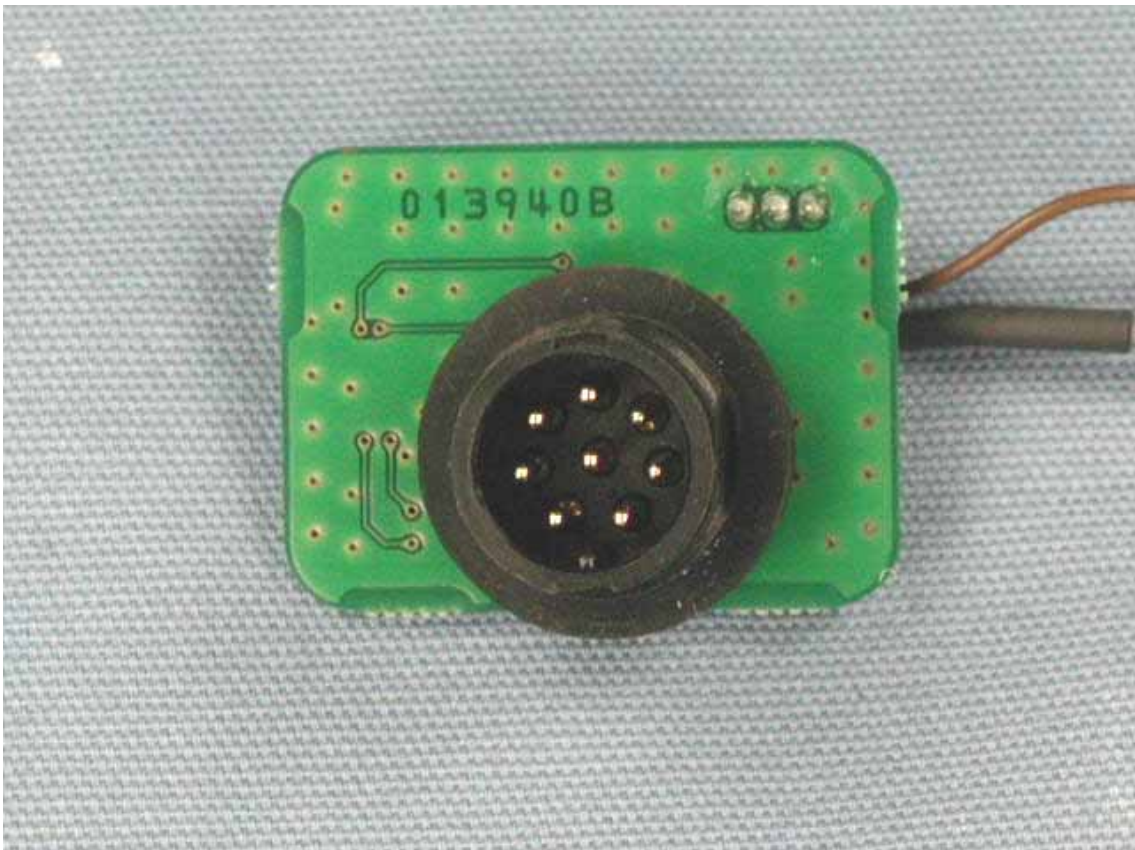
Side-A of VR-UNIT



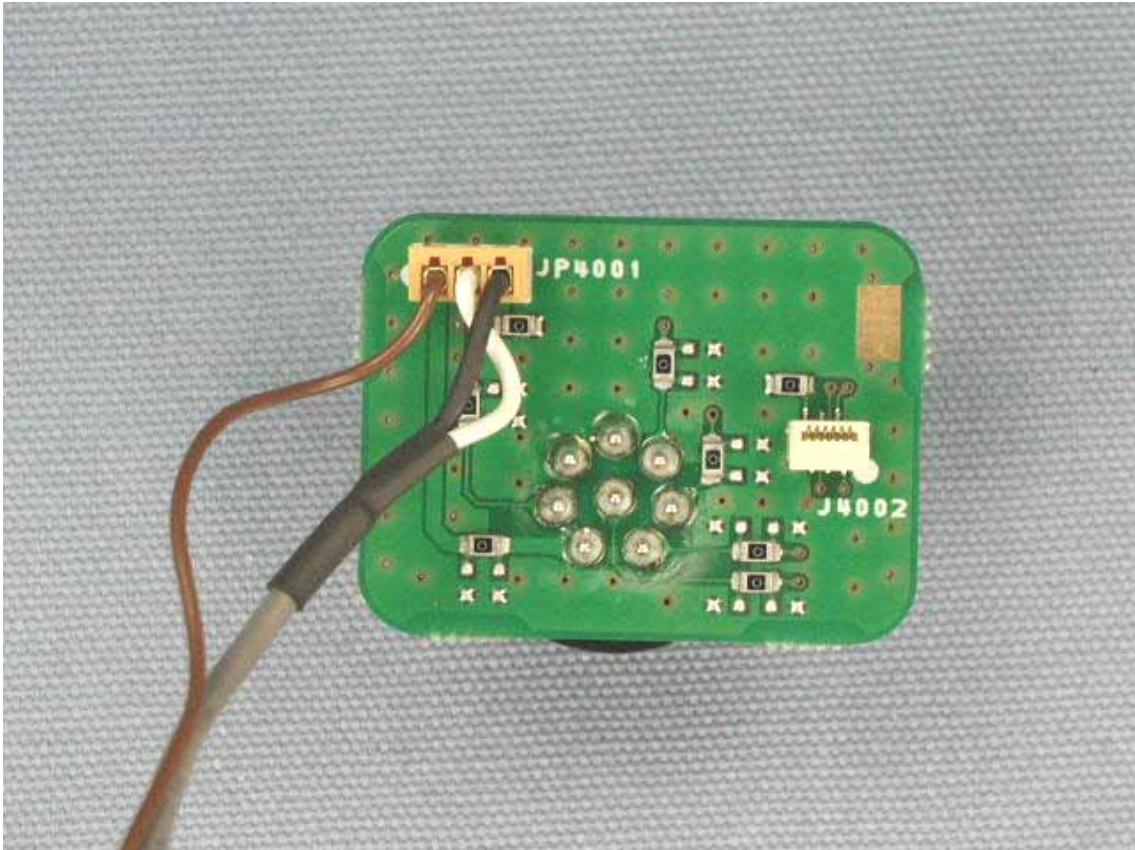
Side-B of VR-UNIT



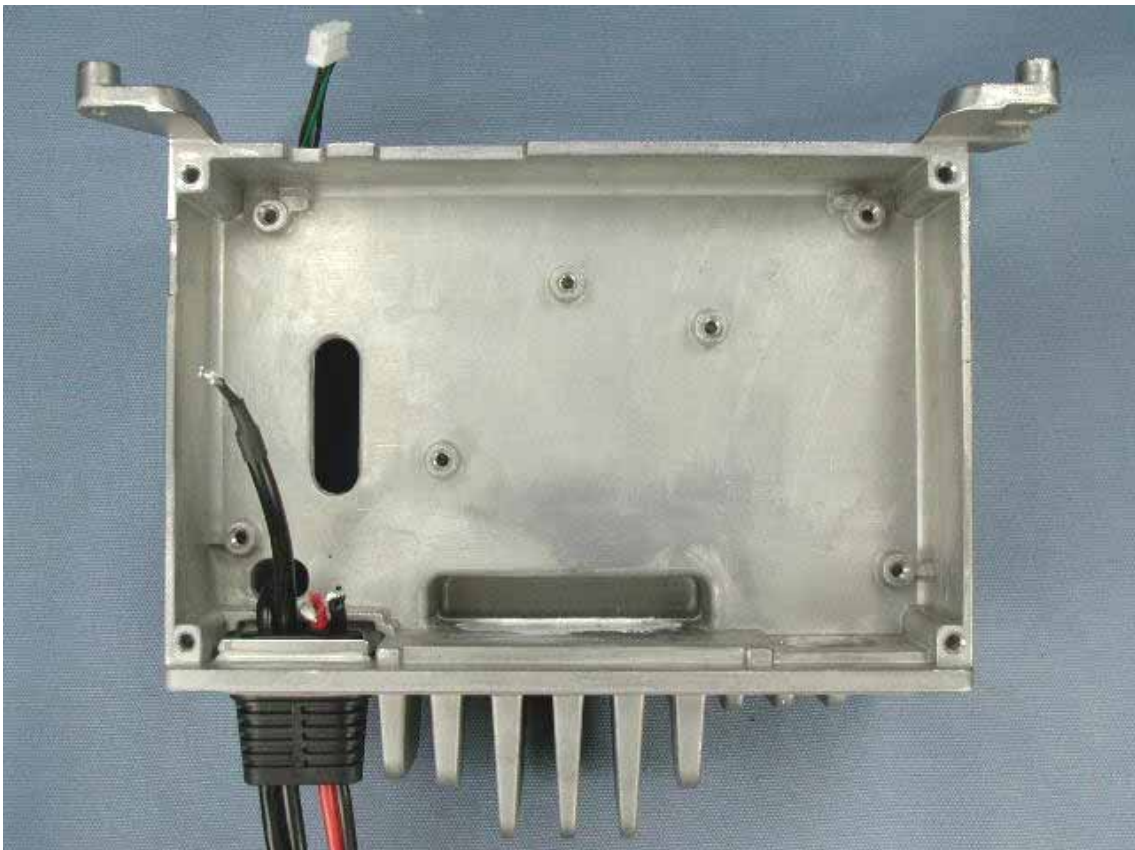
Side-A of RAM-UNIT



Side-B of RAM-UNIT

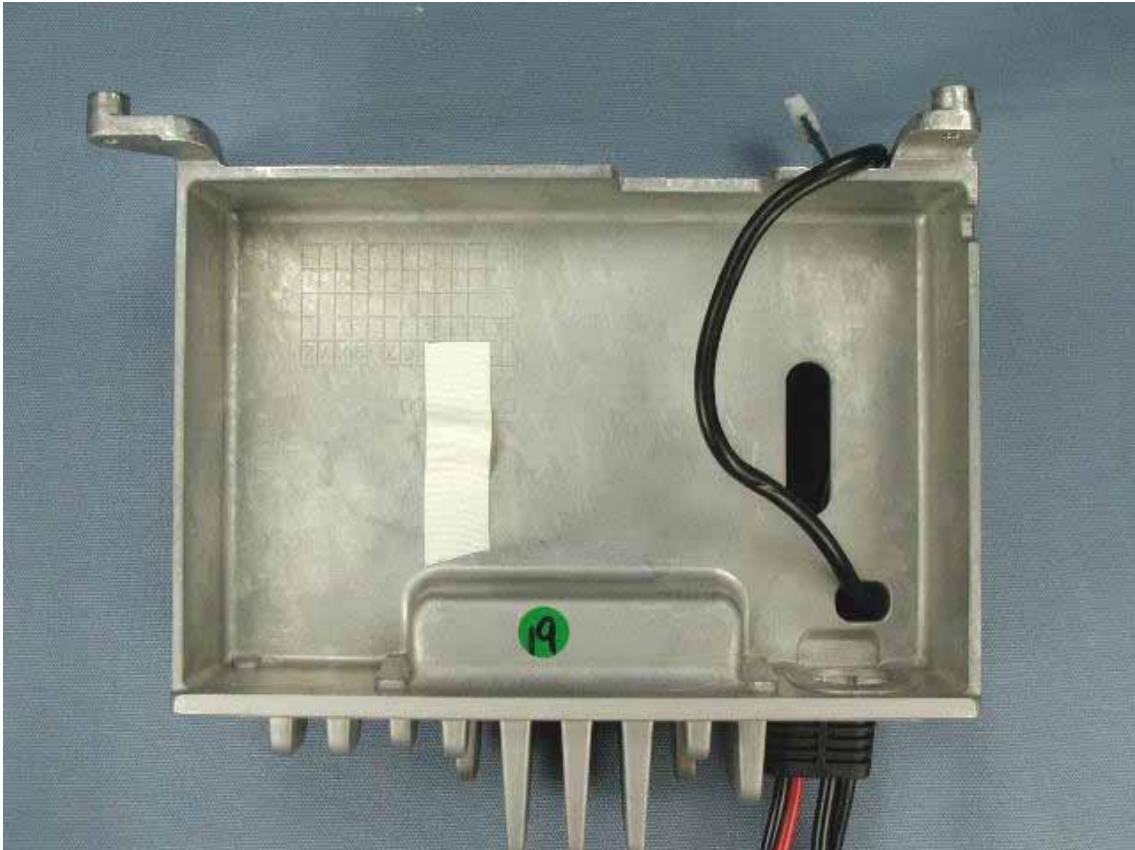


Top of chassis





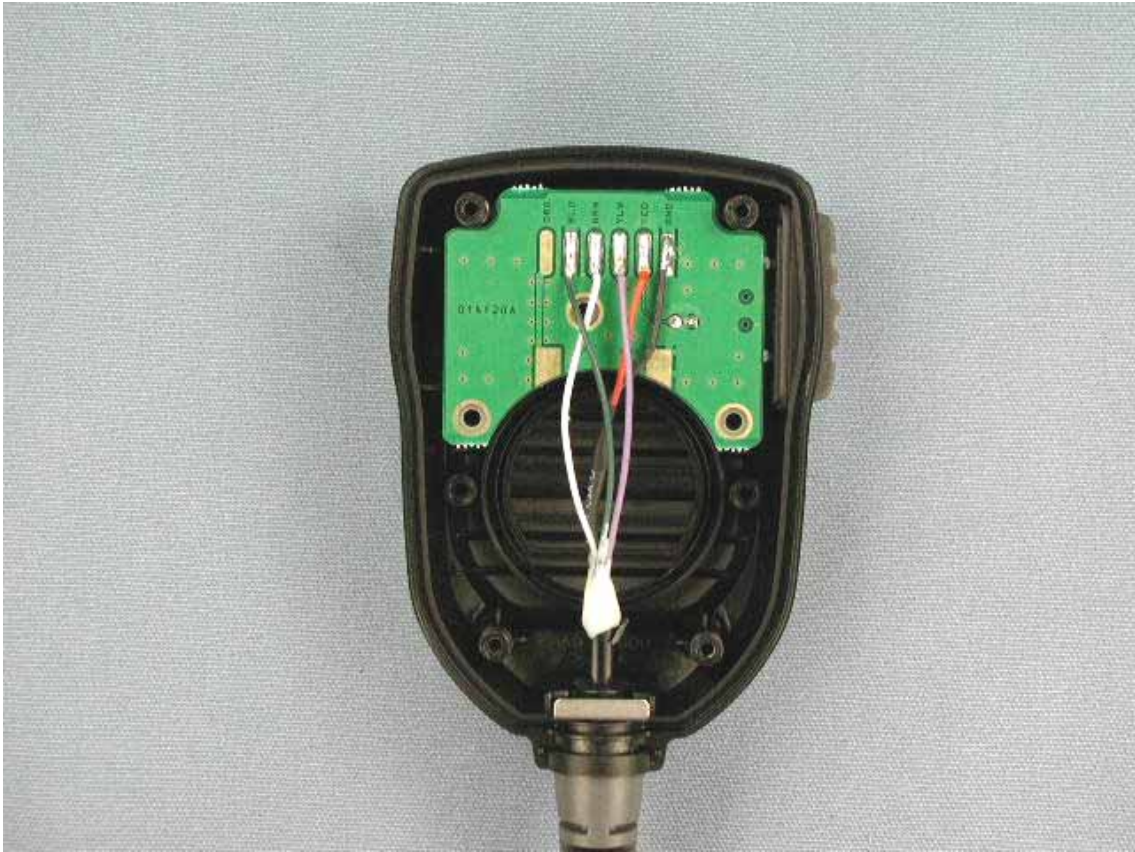
Bottom of chassis



Inside of panel



Inside of microphone (1)



Inside of microphone (2)

