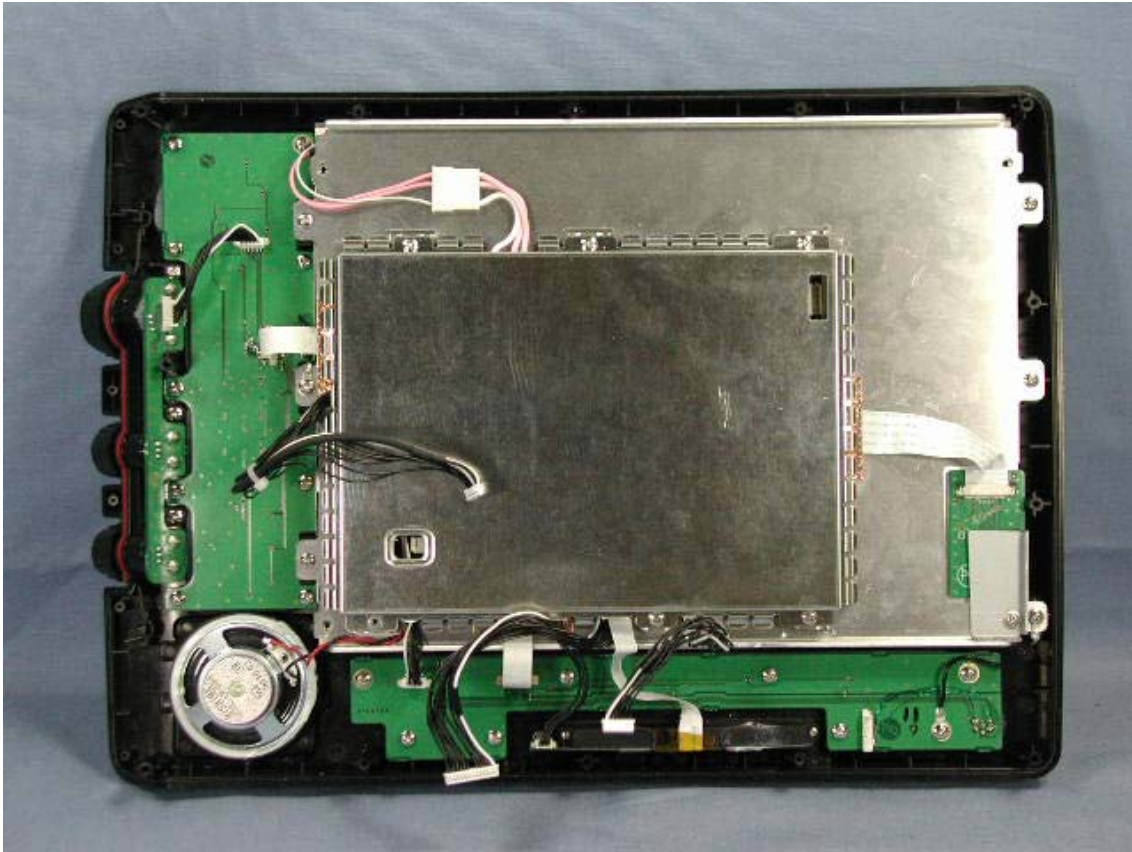
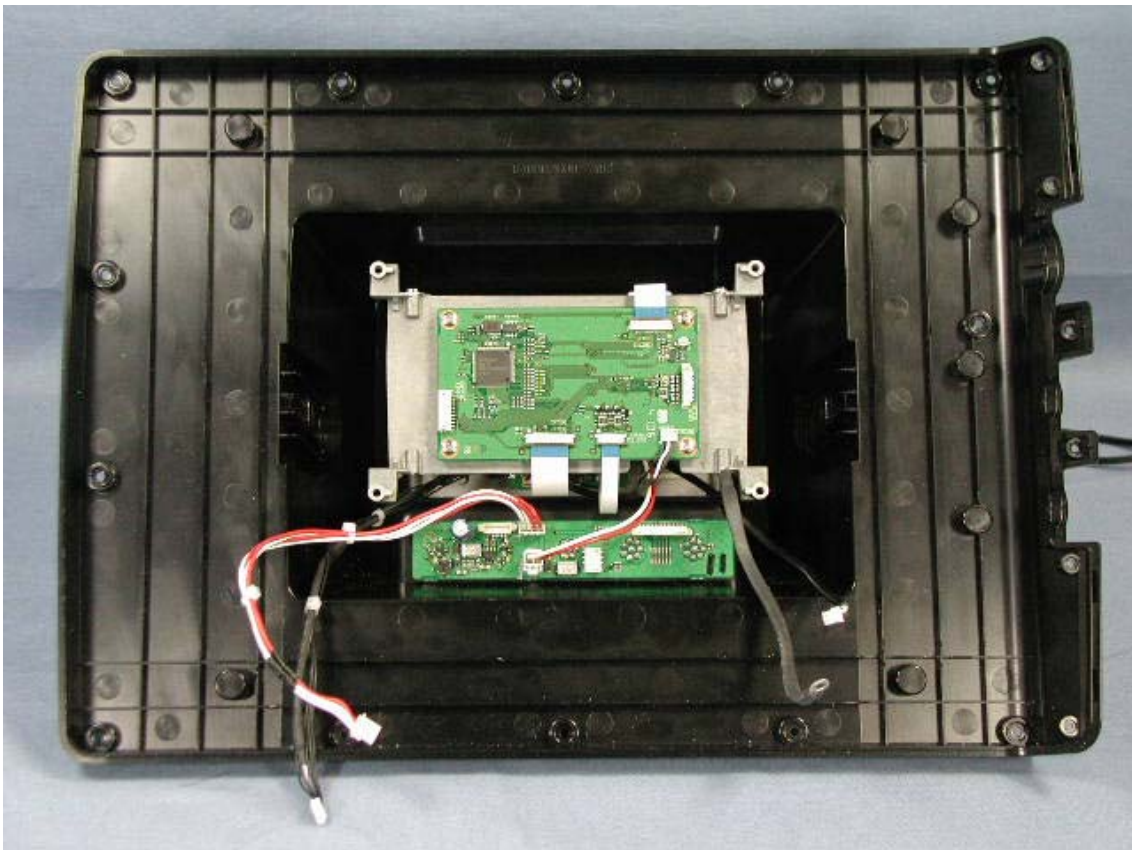


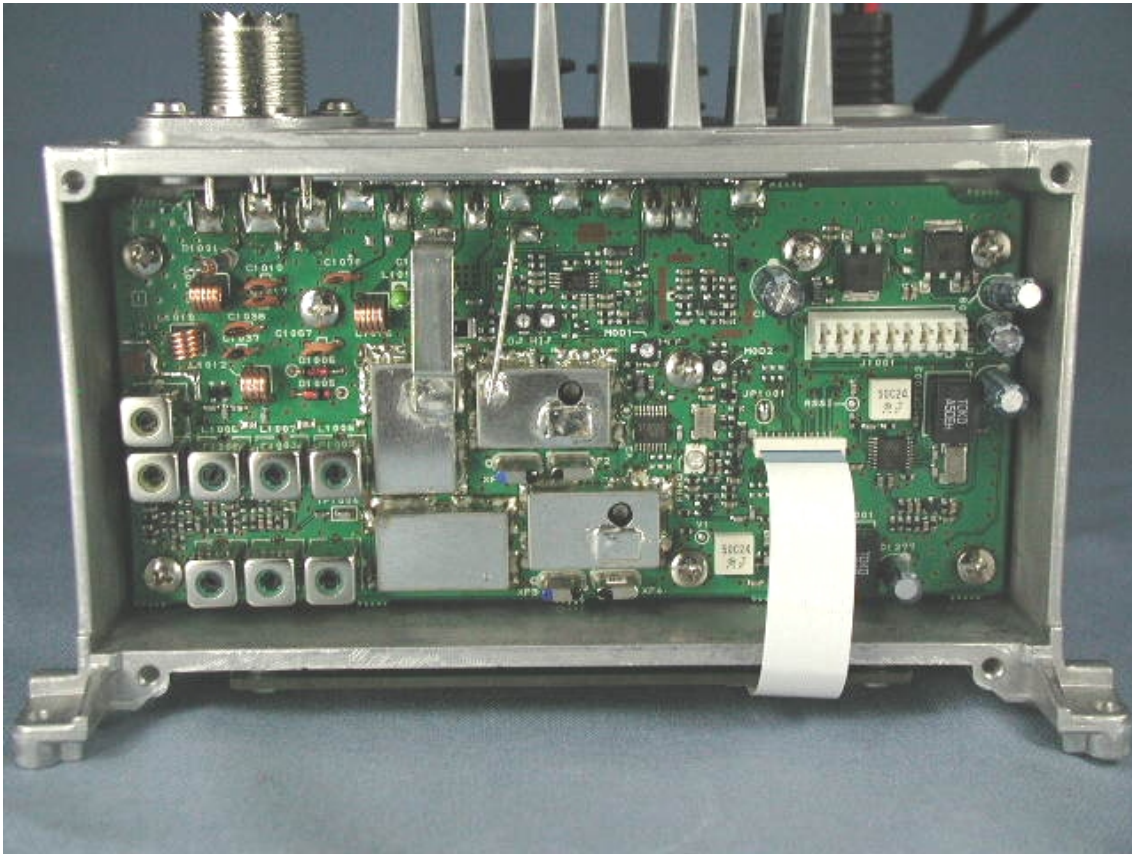
Front panel internal view



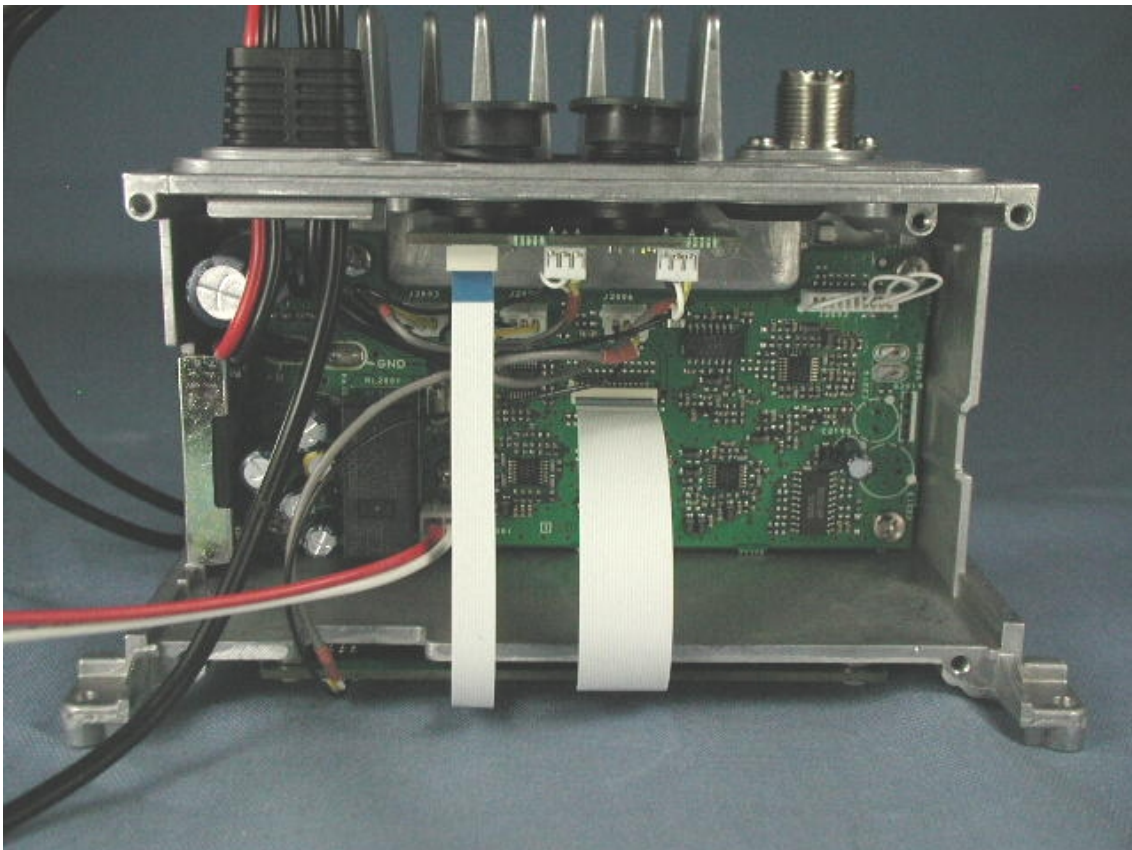
RF-UNIT in the rear case



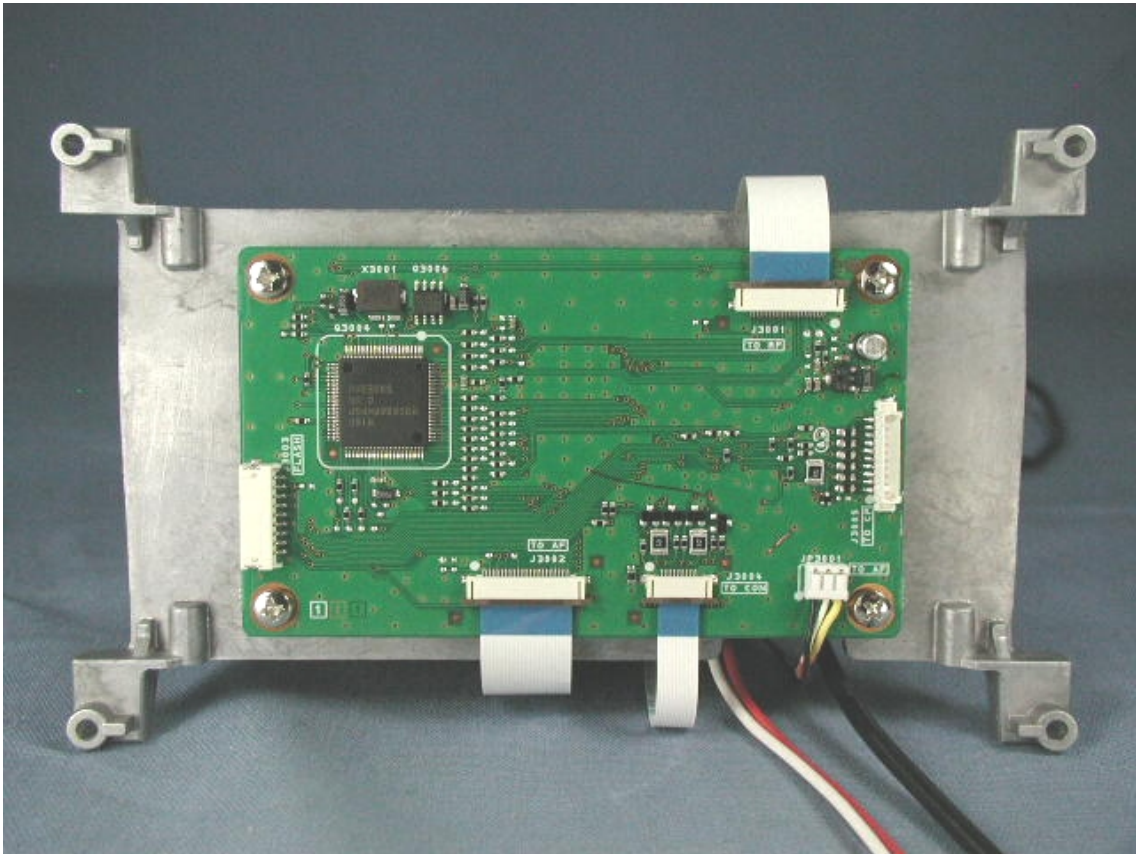
RF-UNIT side of Radio Unit



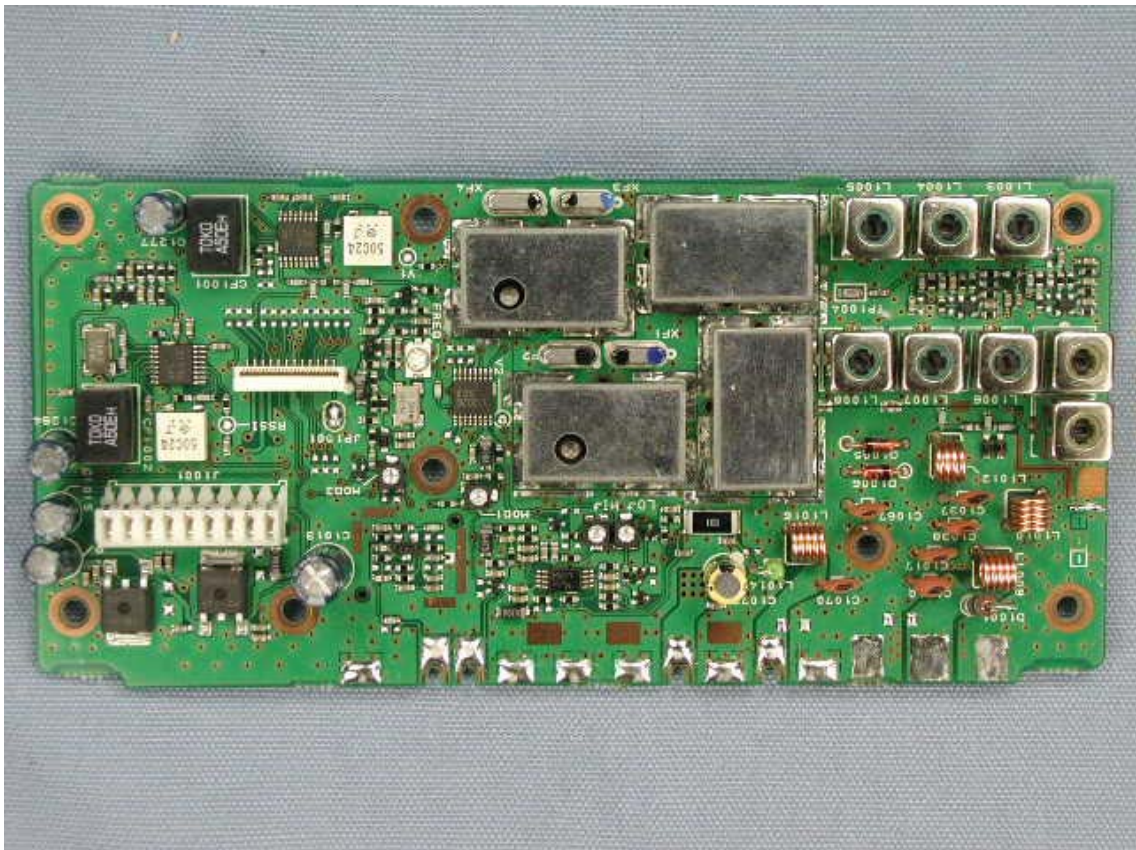
AF-UNIT side of Radio Unit



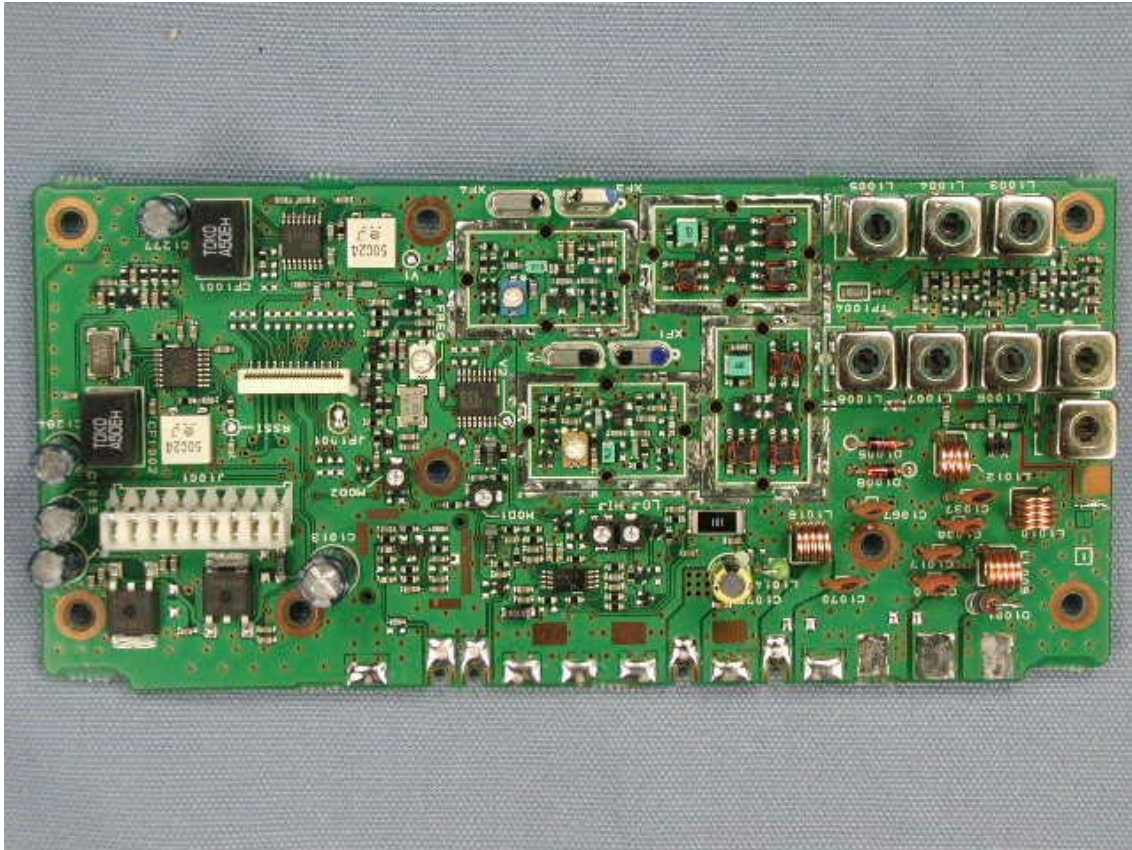
CNTL-UNIT side of Radio Unit



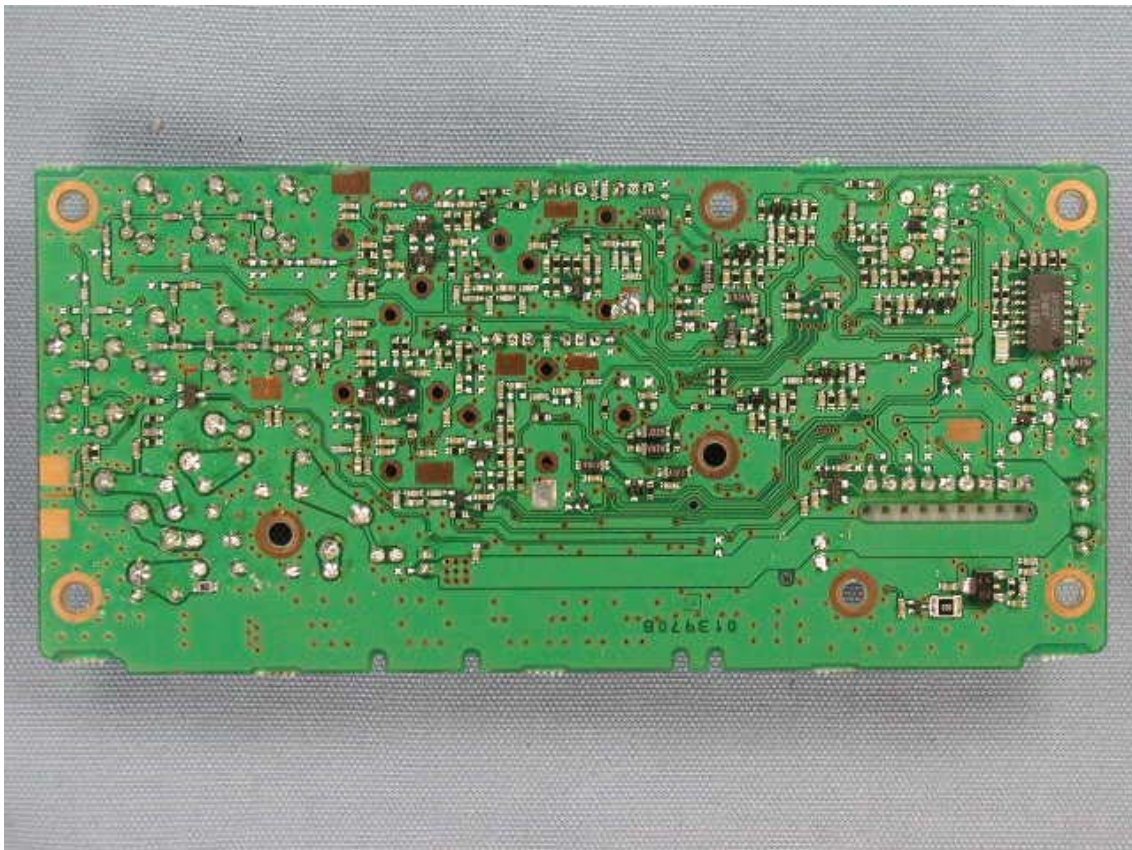
Side-A of RF-UNIT with shield cases



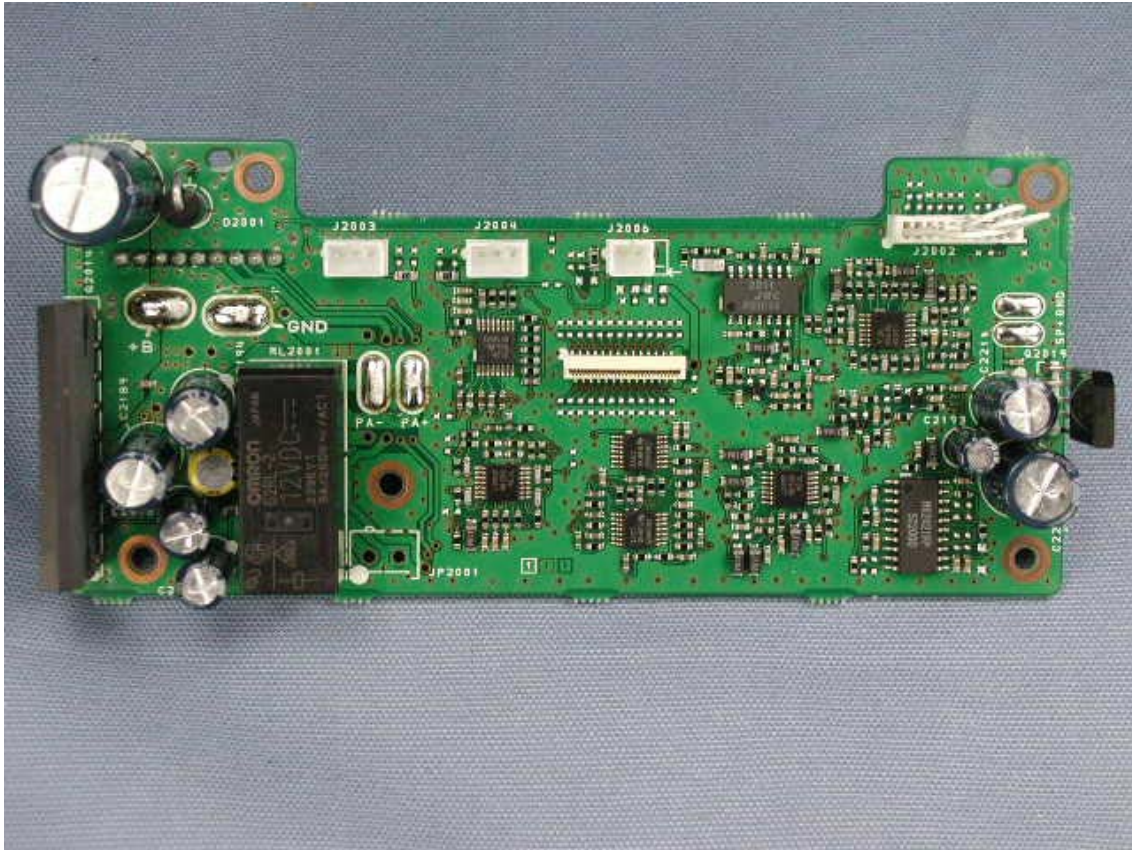
Side-A of RF-UNIT without shield cases



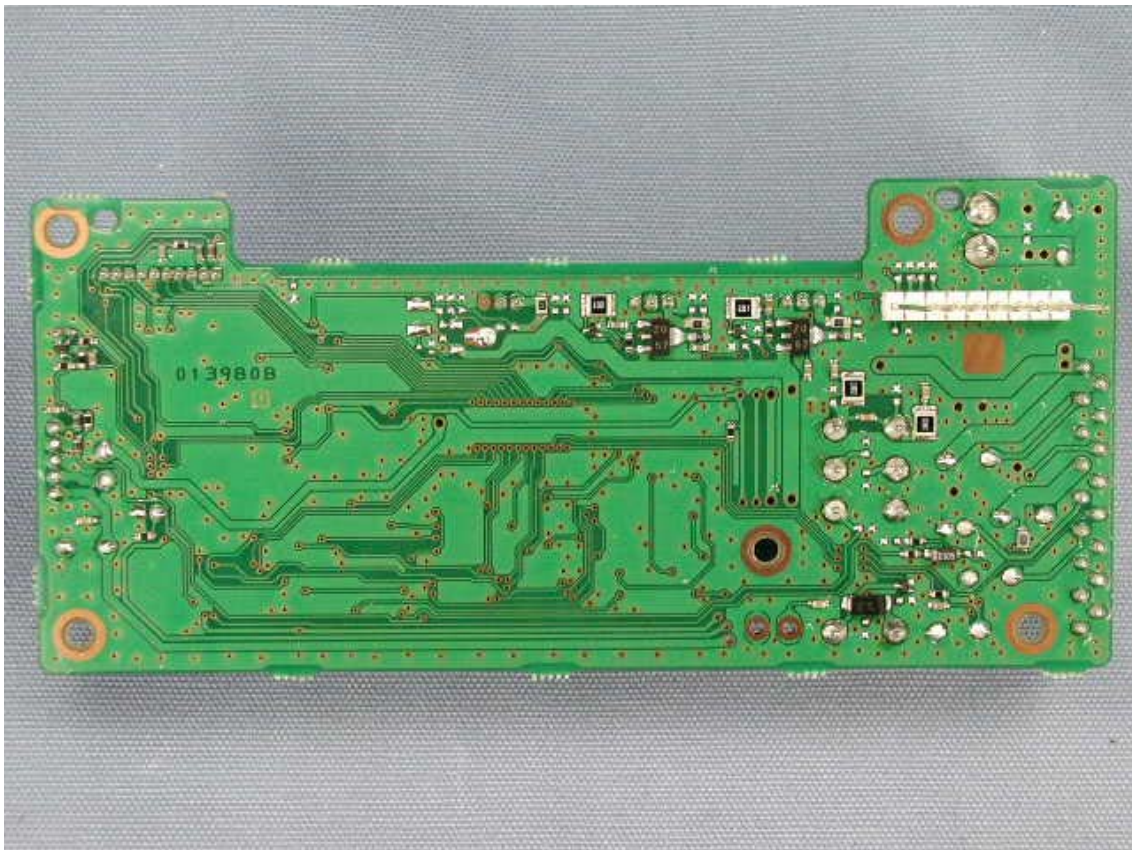
Side-B of MAIN-UNIT



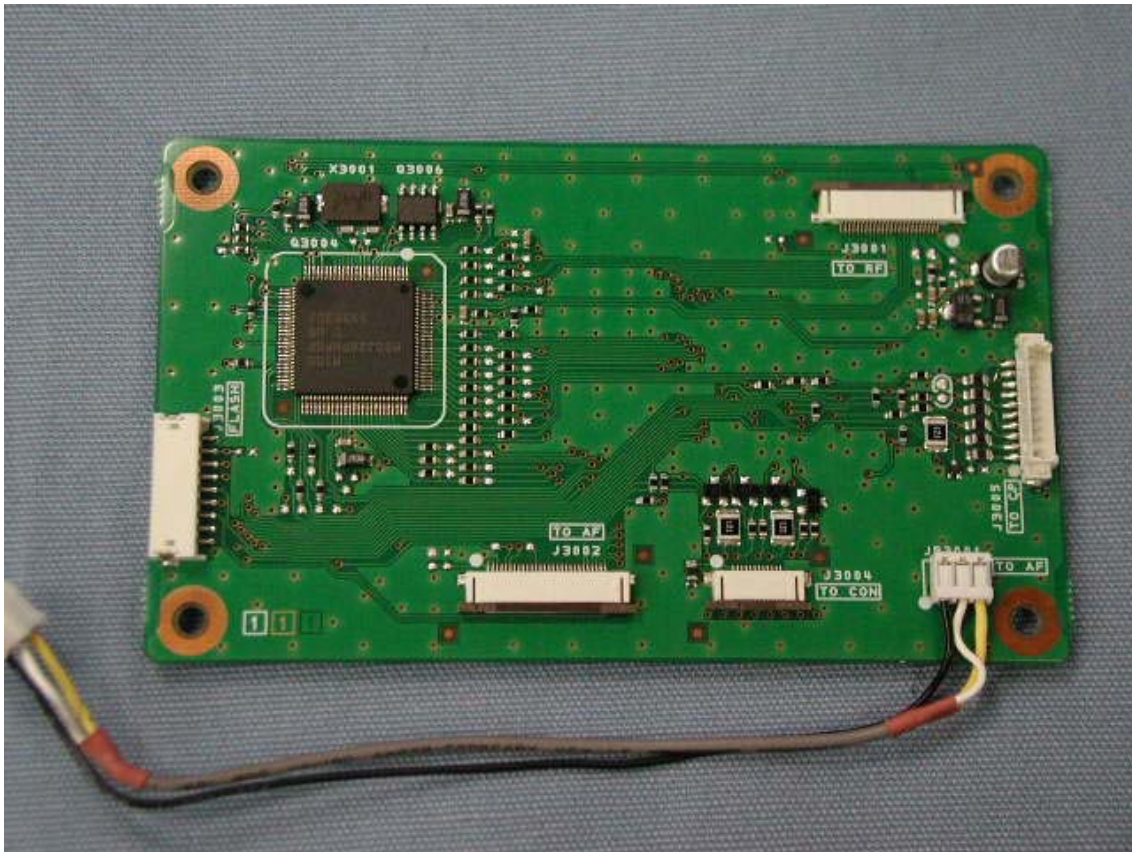
Side-A of AF-UNIT



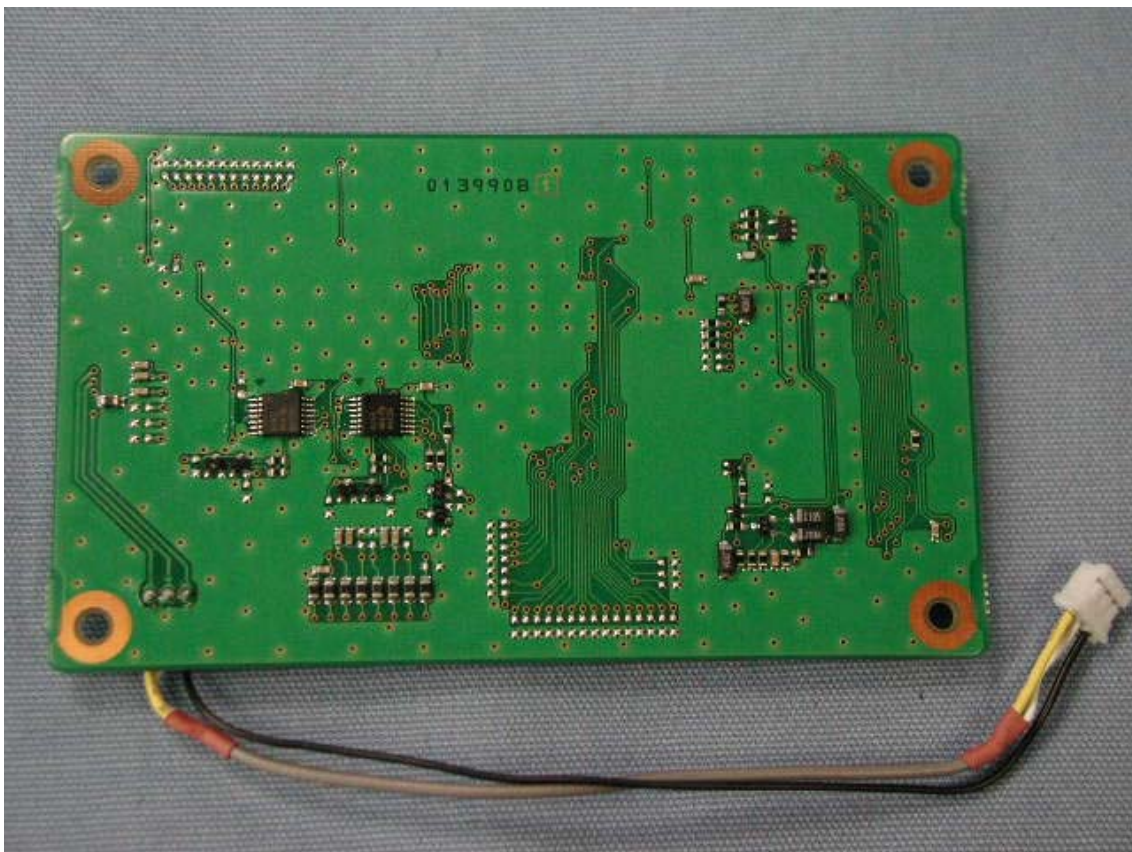
Side-B of AF-UNIT



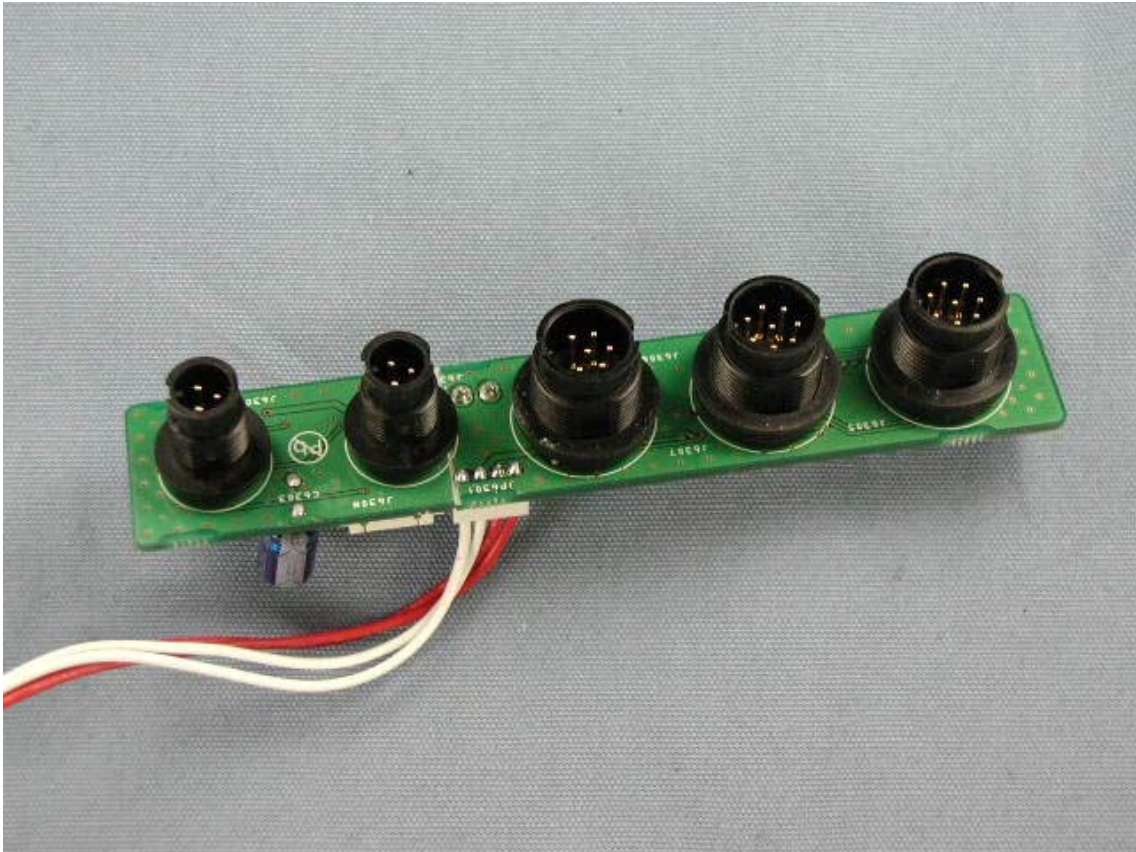
Side-A of CNTL-UNIT



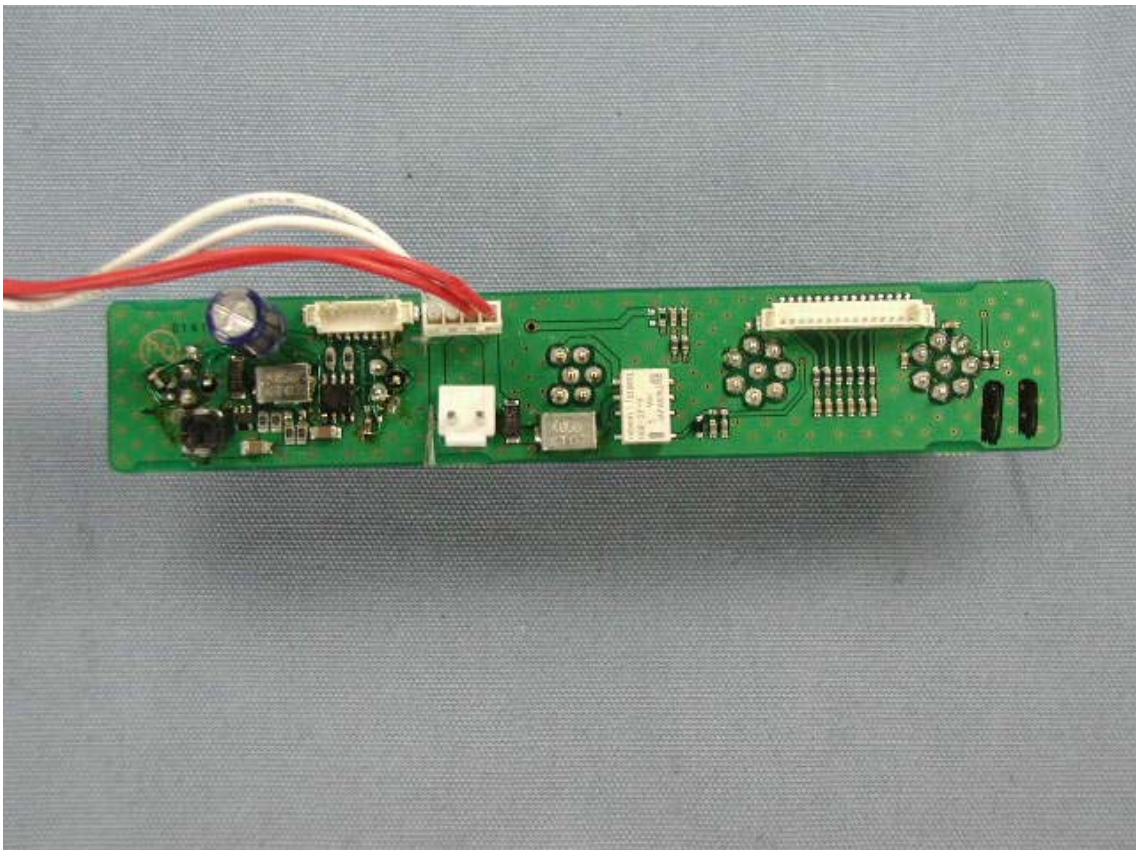
Side-B of CNTL-UNIT



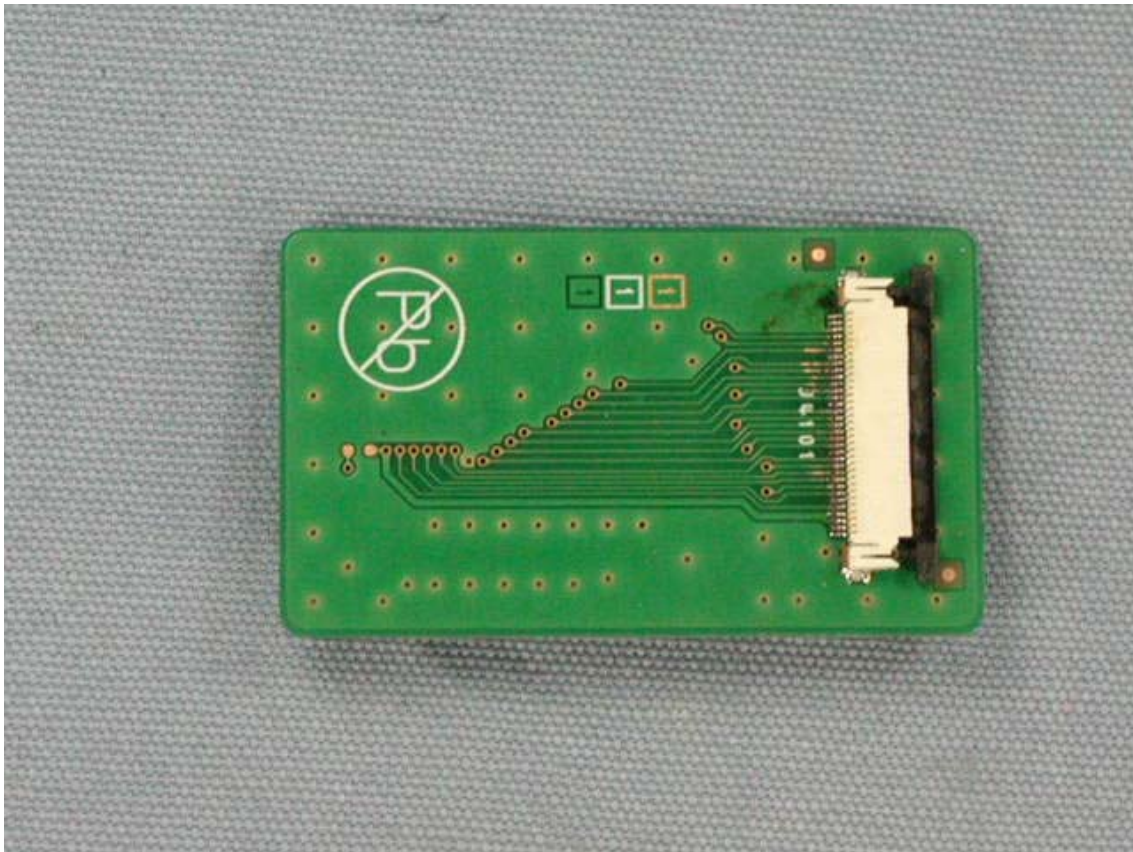
Side-A of CONNECT-UNIT



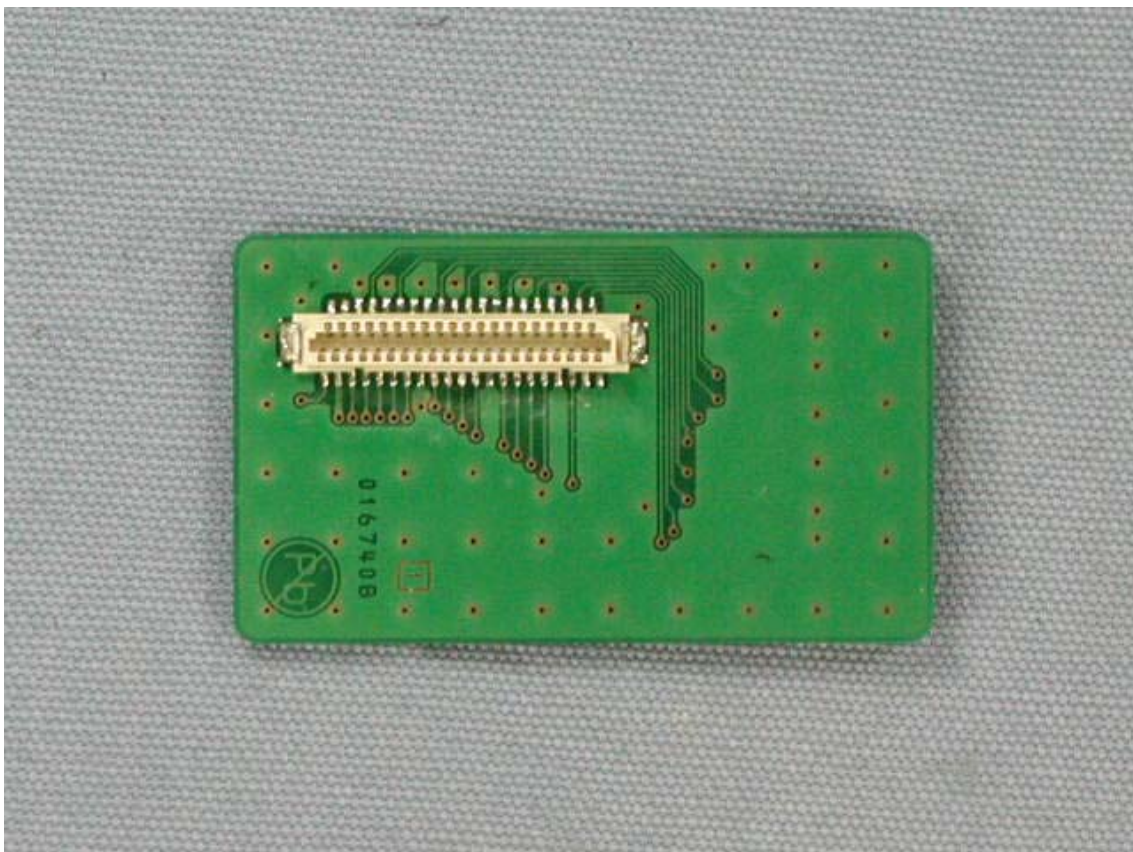
Side-B of CONNECT-UNIT



Side-A of CON-2-UNIT

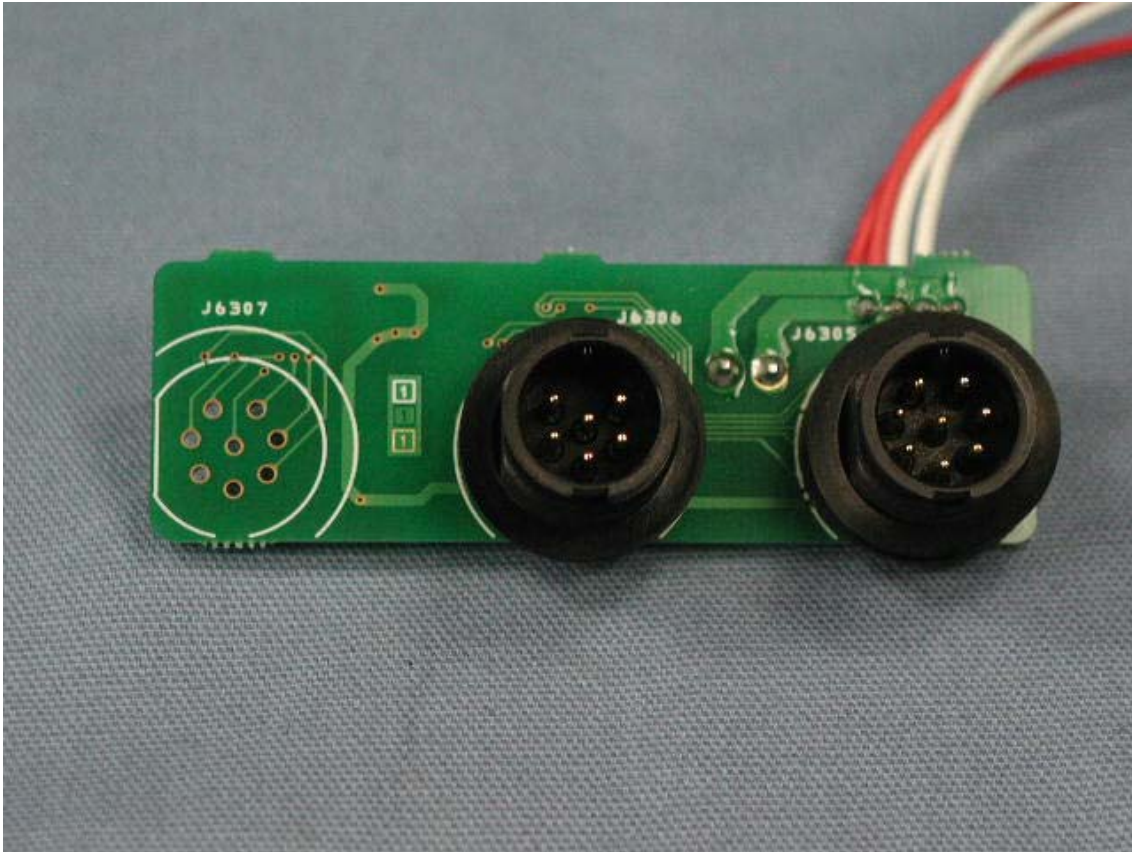


Side-B of CON-2-UNIT

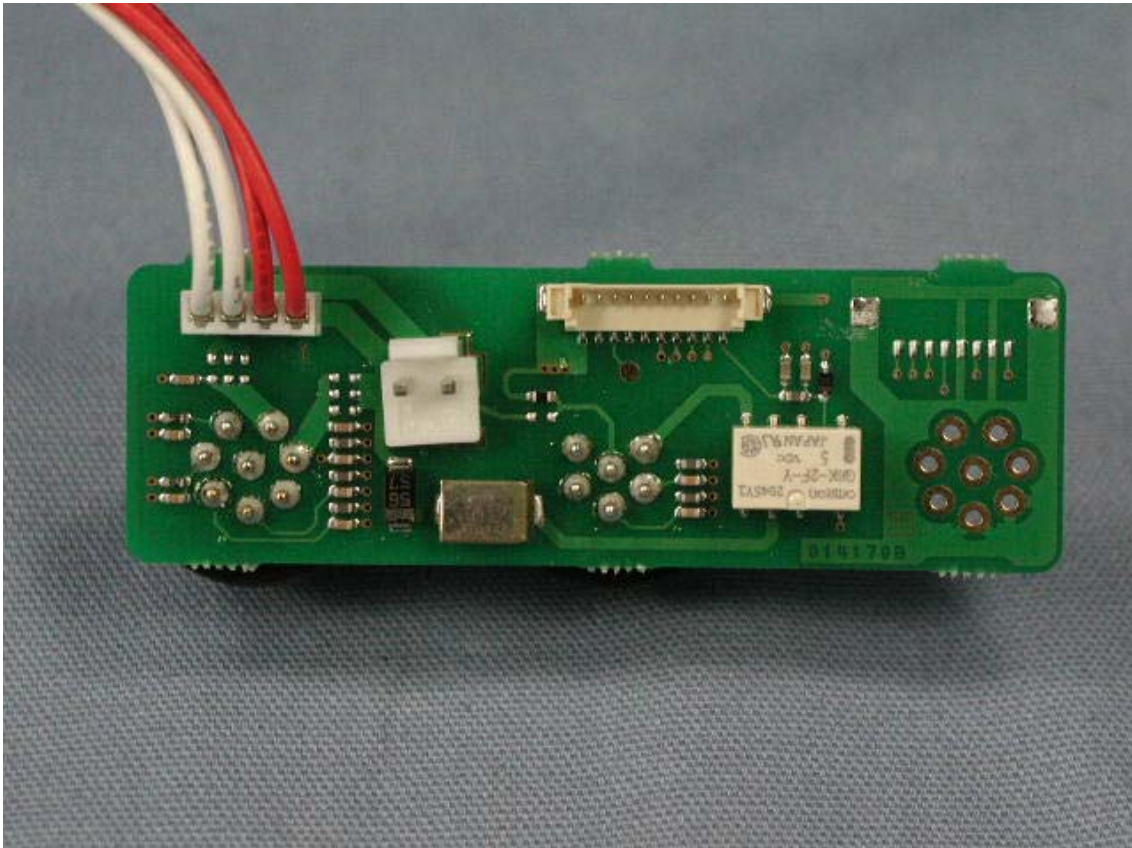




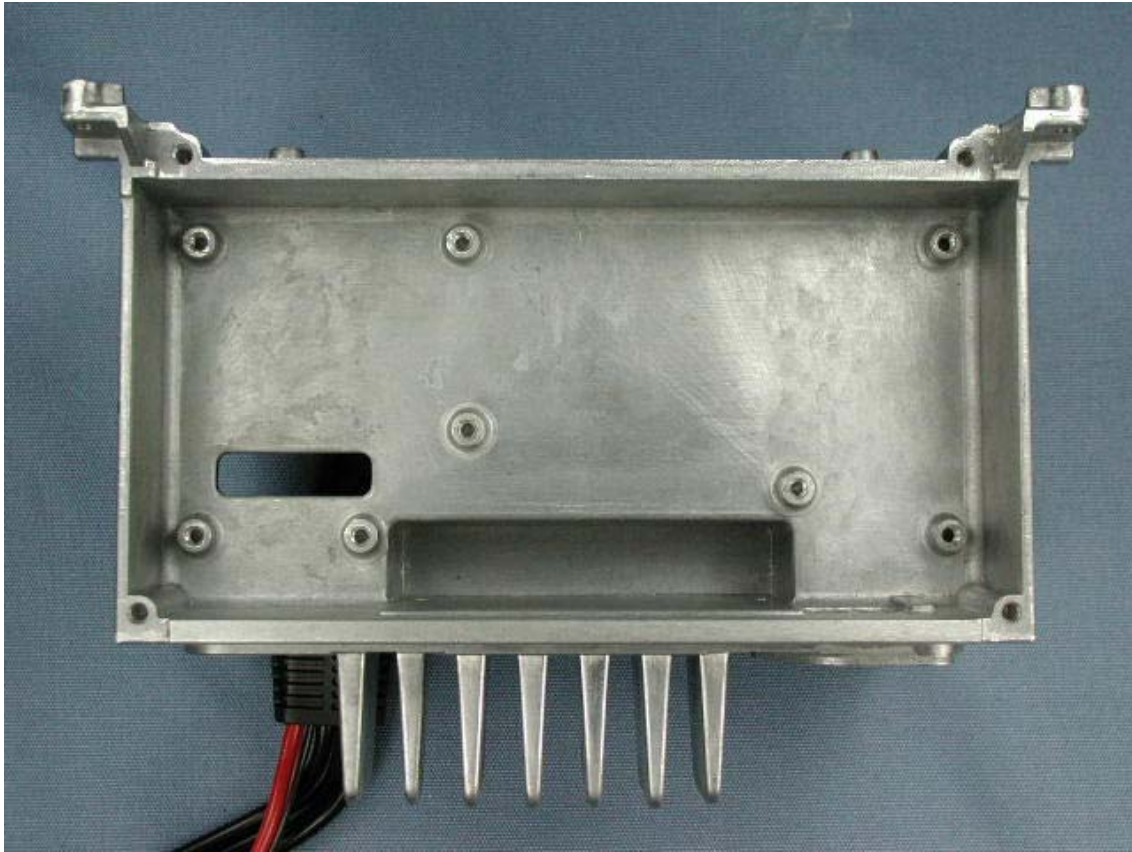
Side-A of CON-3-UNIT



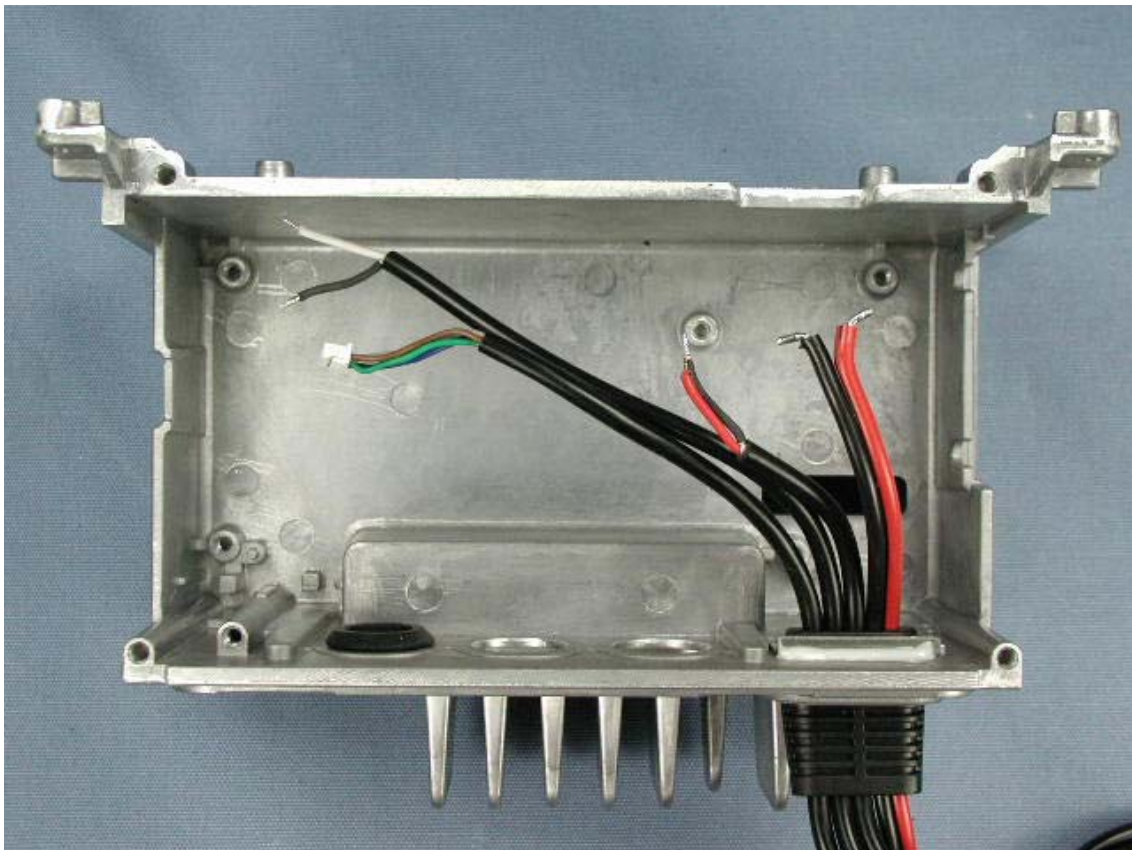
Side-B of CON-3-UNIT



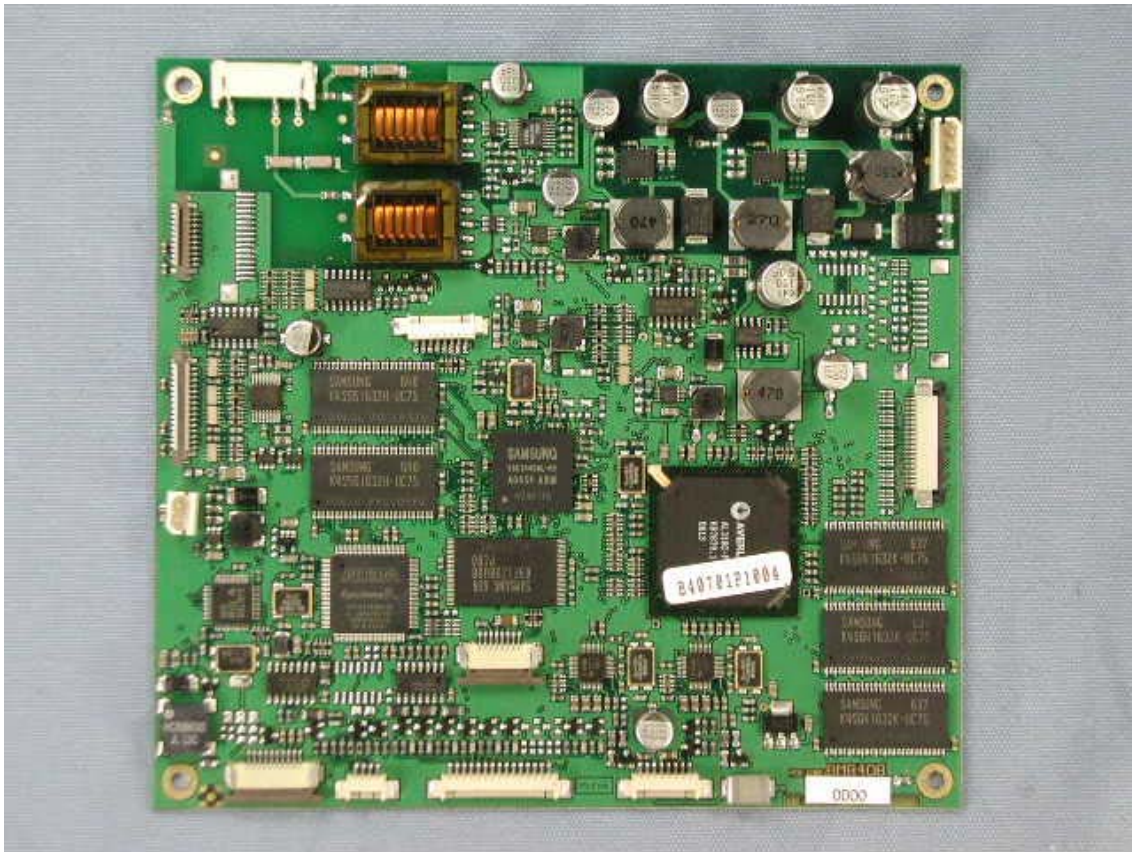
Top of chassis



Bottom of chassis



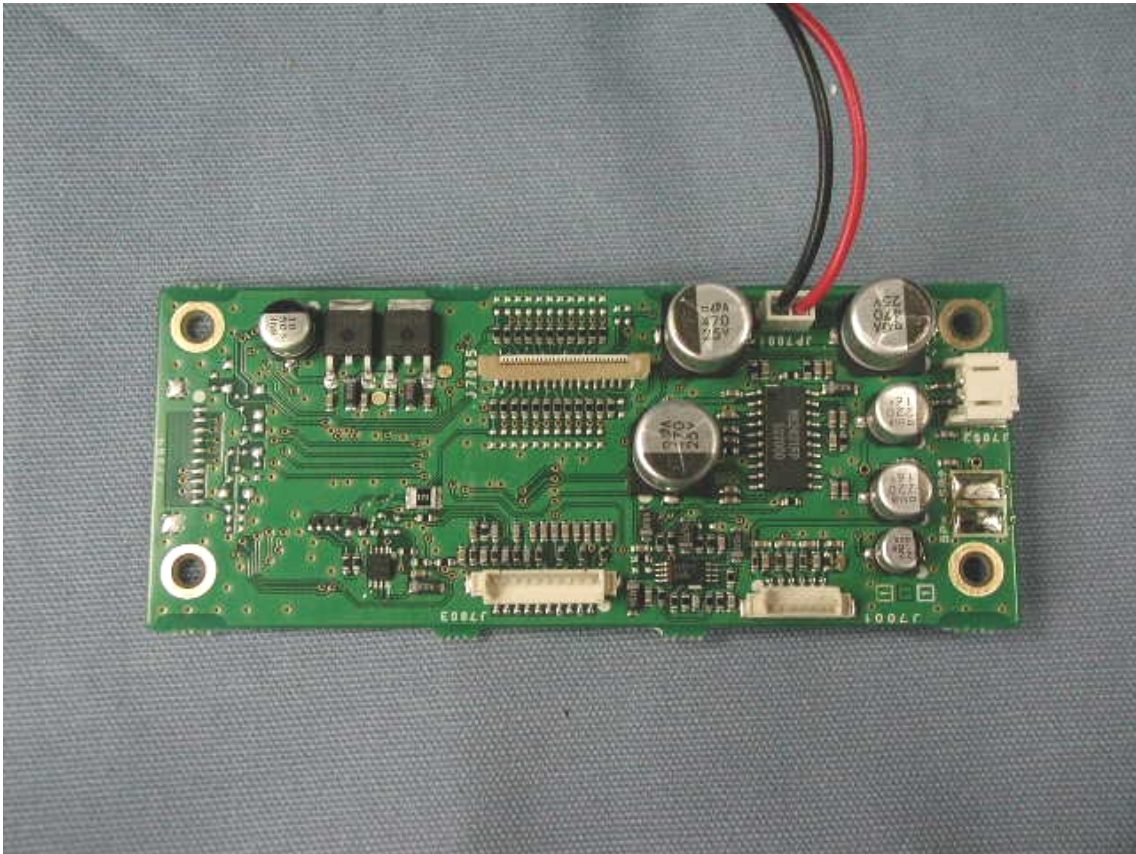
Main board side of chart plotter unit



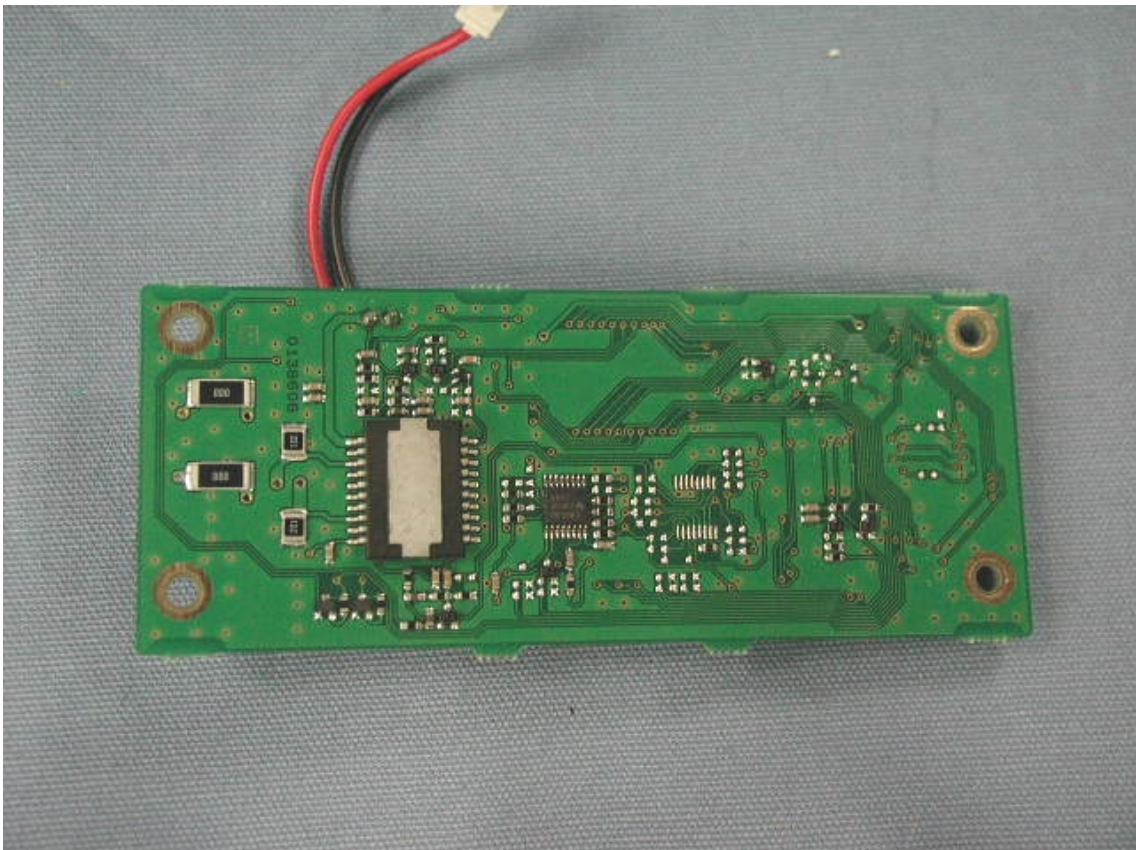
LCD side of chart plotter unit



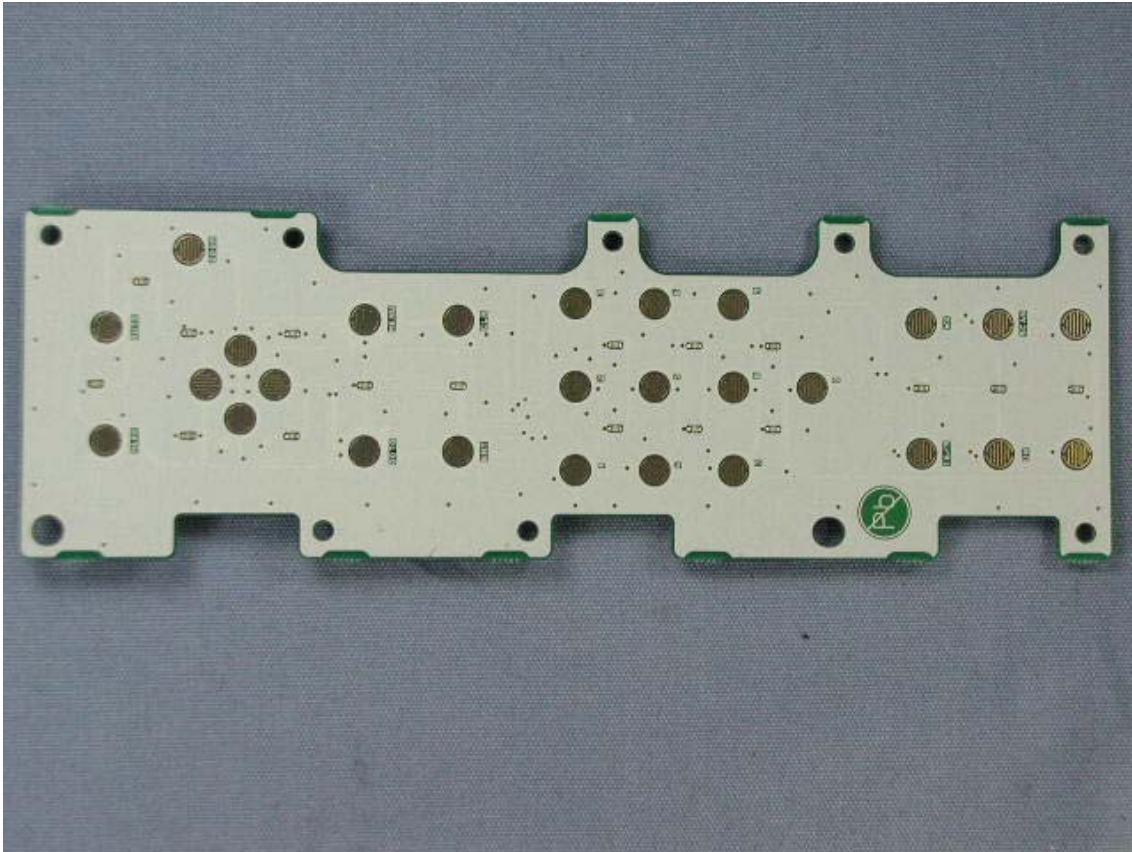
Side-A of RAM-UNIT



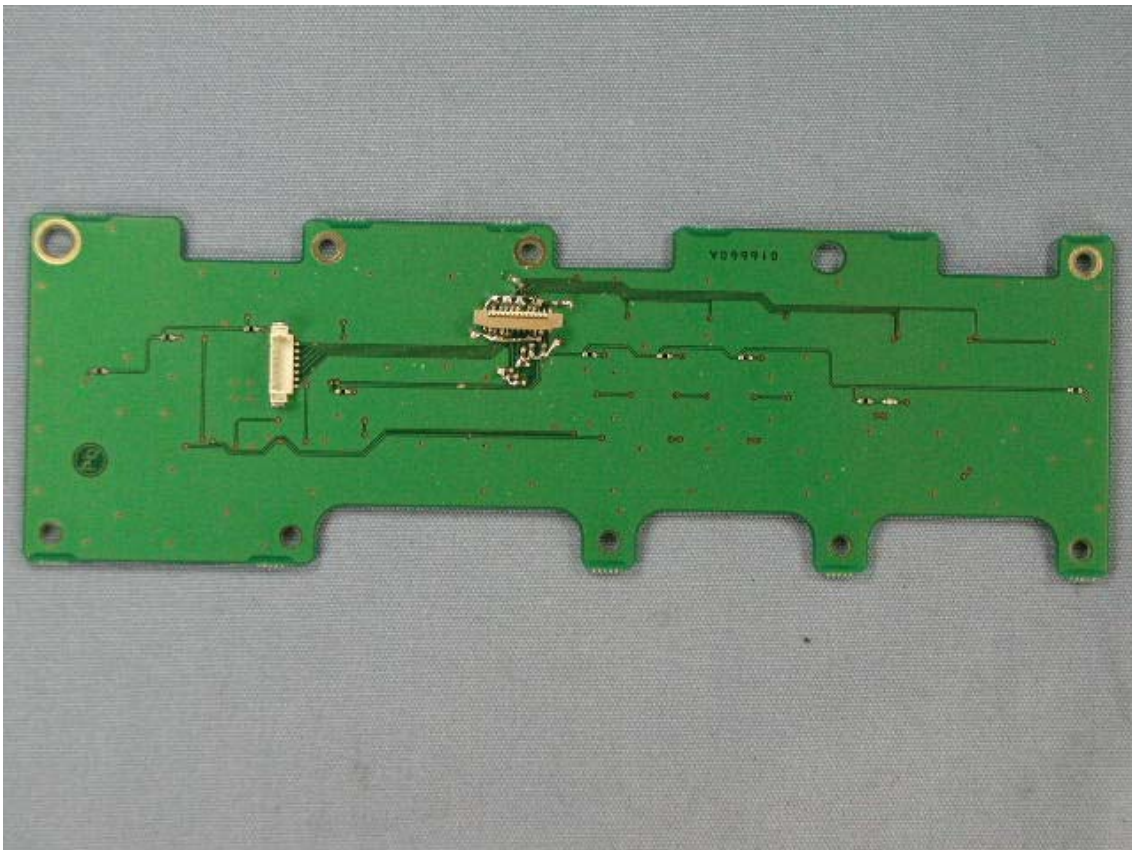
Side-B of RAM-UNIT



Side-A of KEY-1-UNIT



Side-B of KEY-1-UNIT



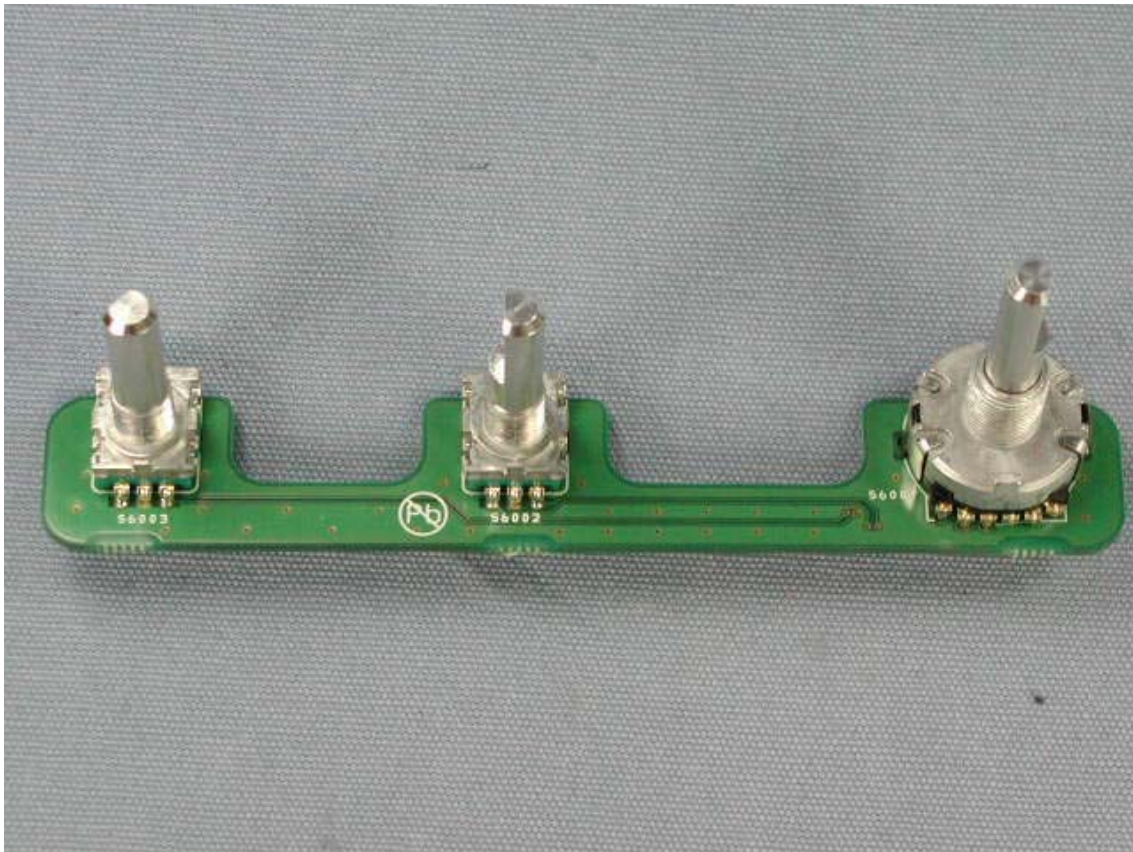
Side-A of KEY-2-UNIT



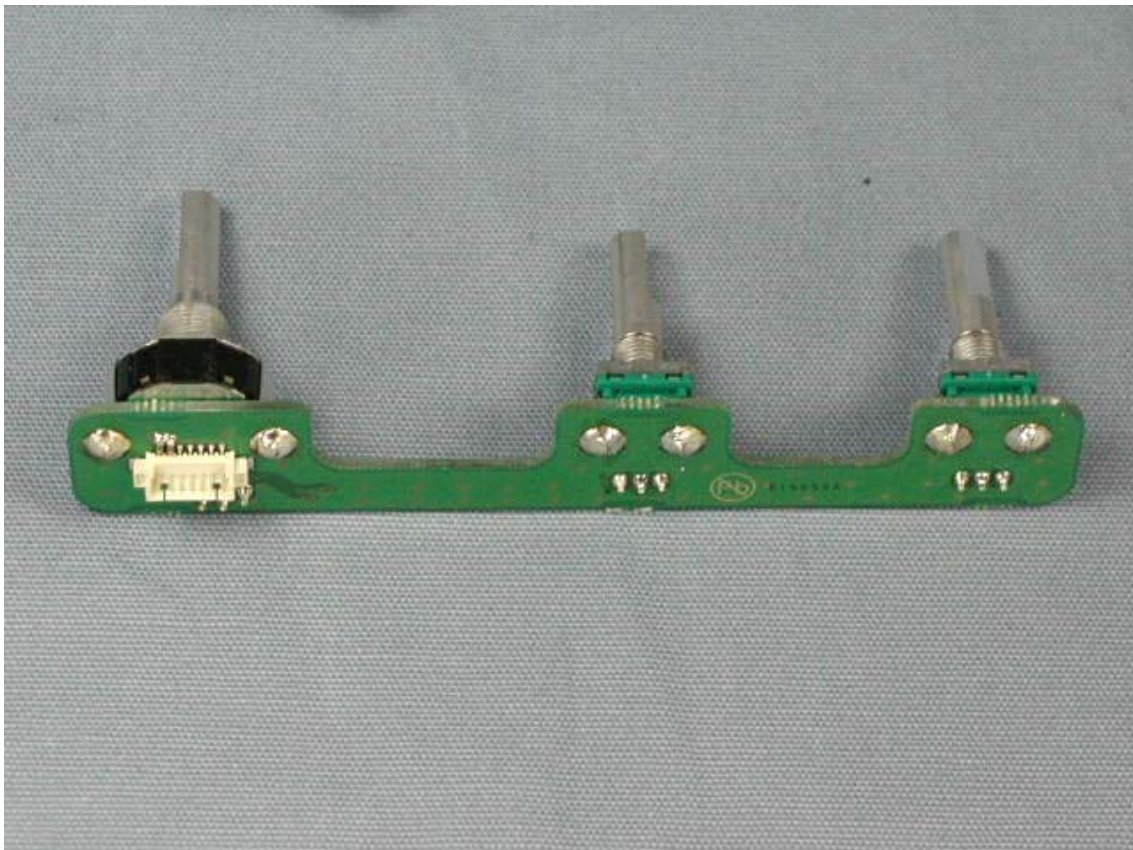
Side-B of KEY-2-UNIT



Side-A of VR-UNIT



Side-B of VR-UNIT



Inside of microphone (1)



Inside of microphone (2)

