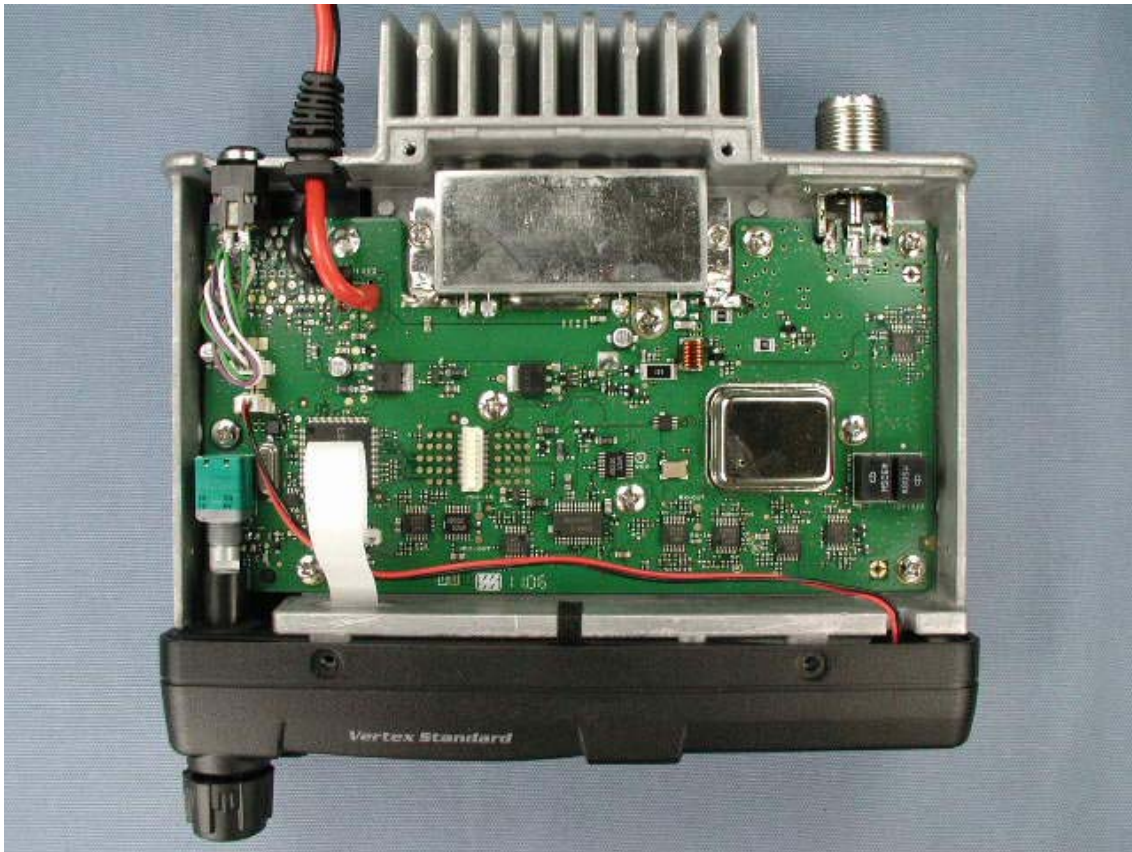
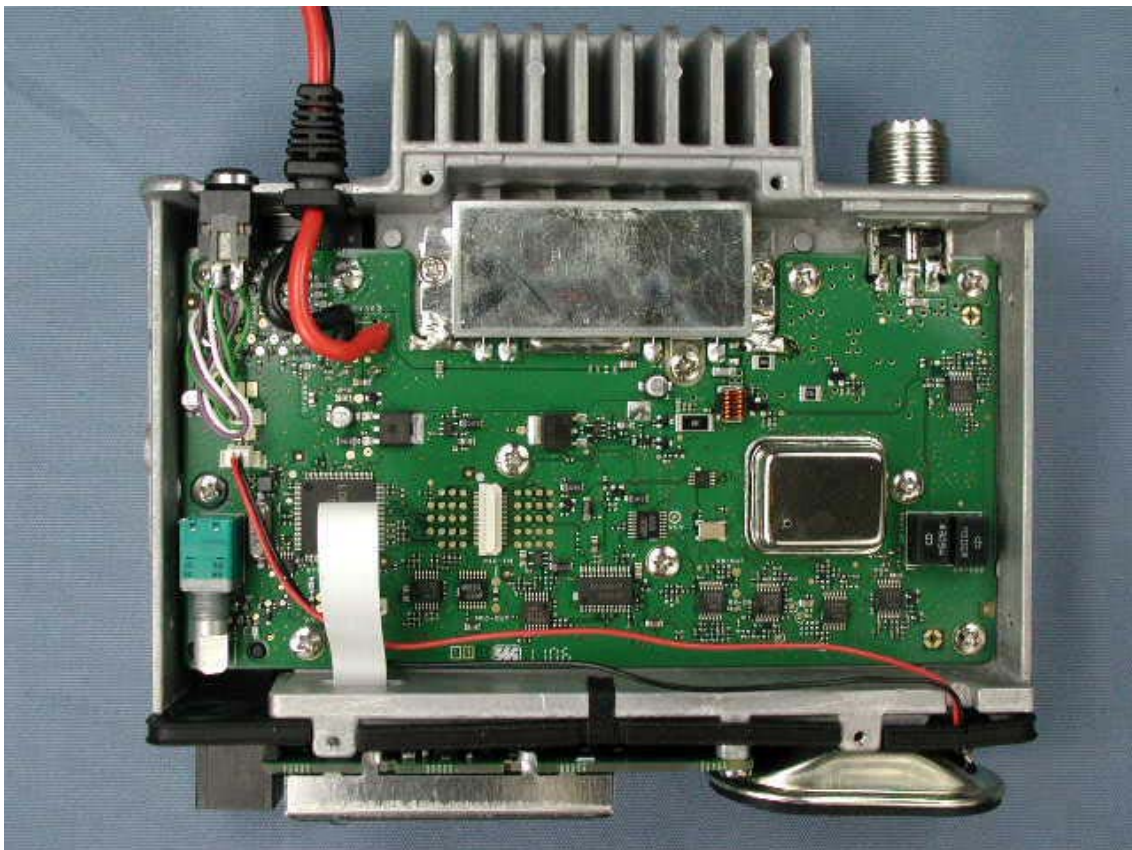


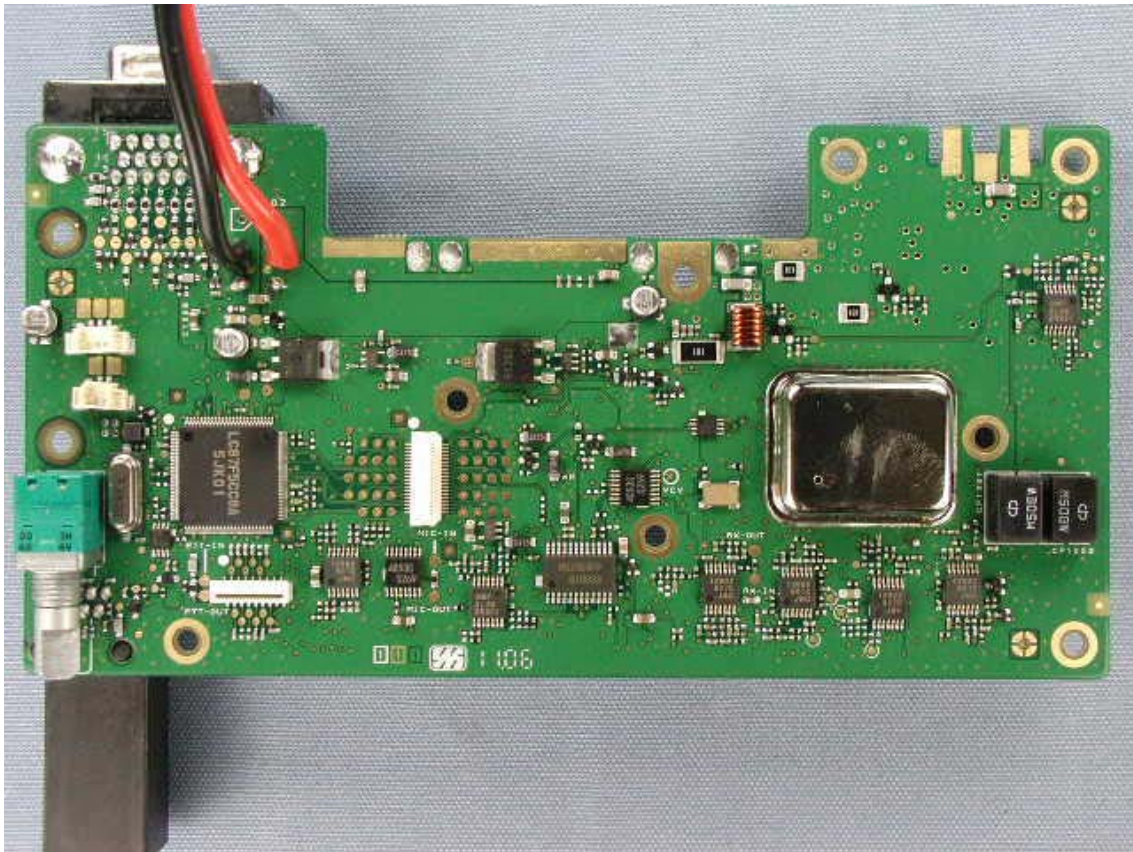
Removed top cover



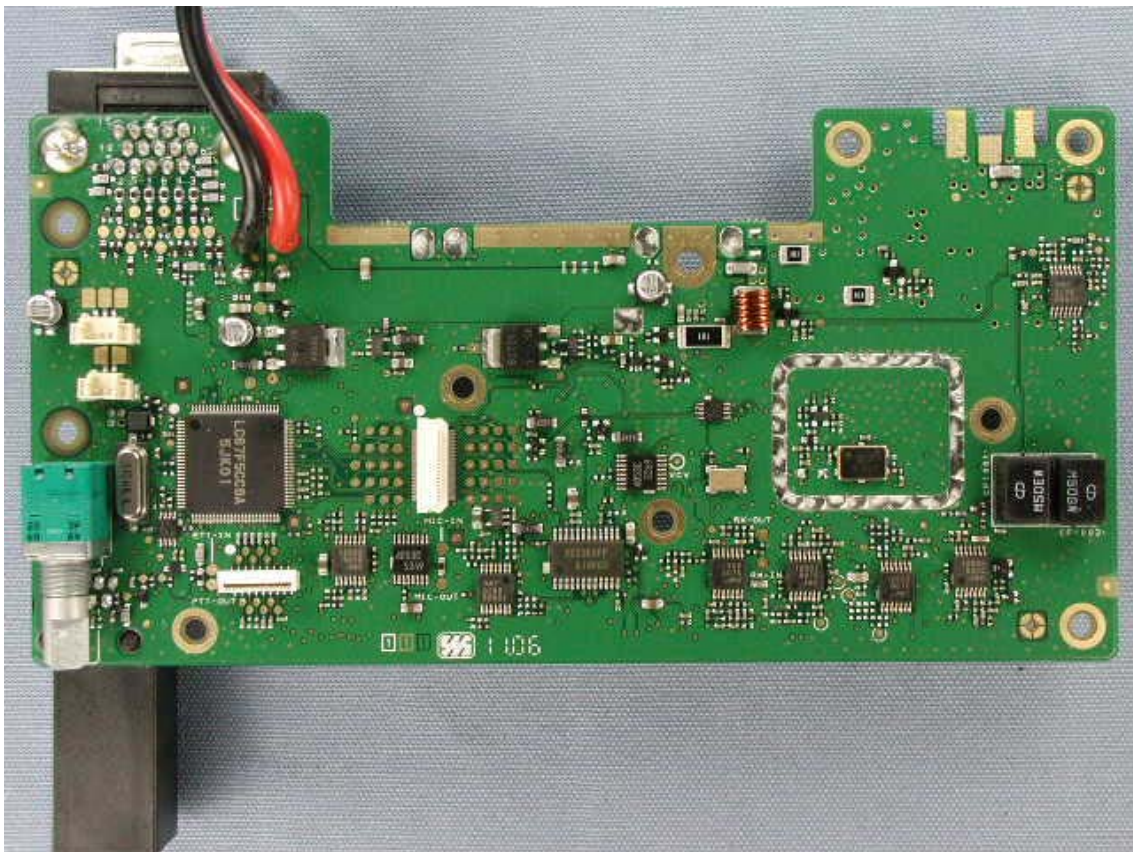
Removed front panel



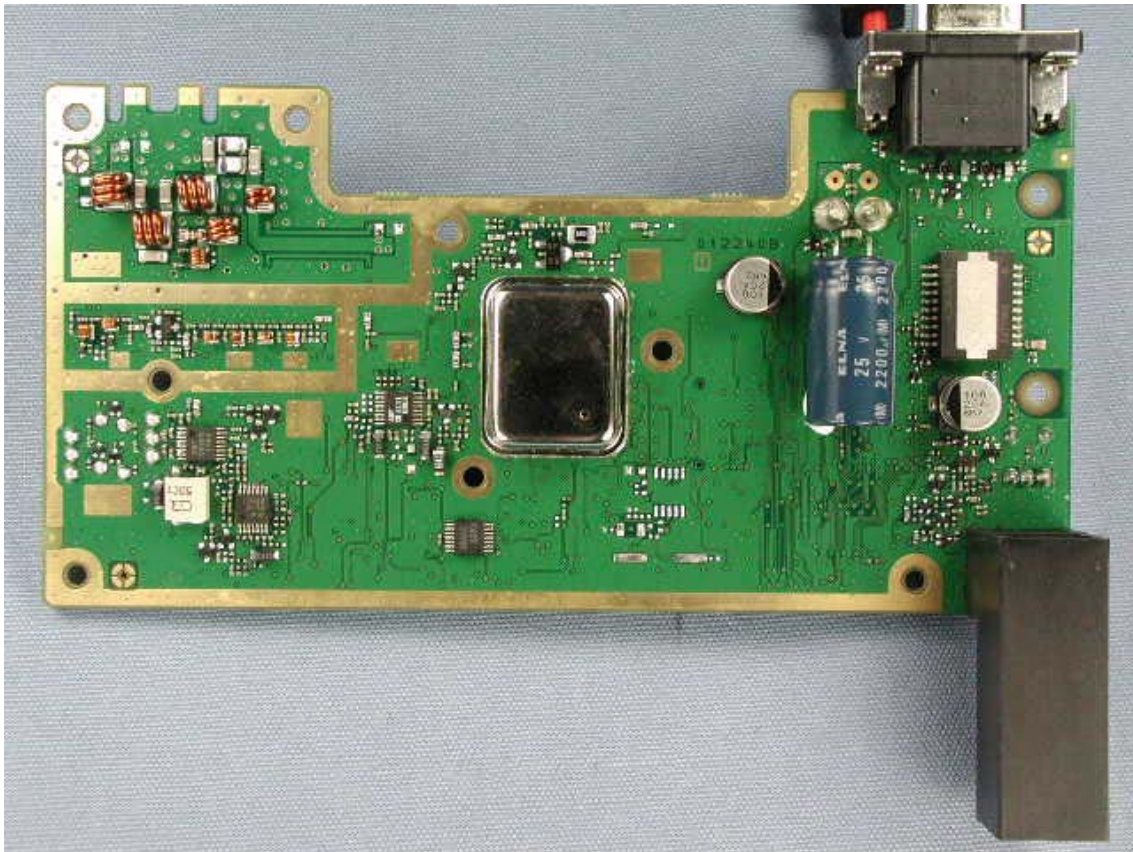
Side-A of MAIN-UNIT with shield case



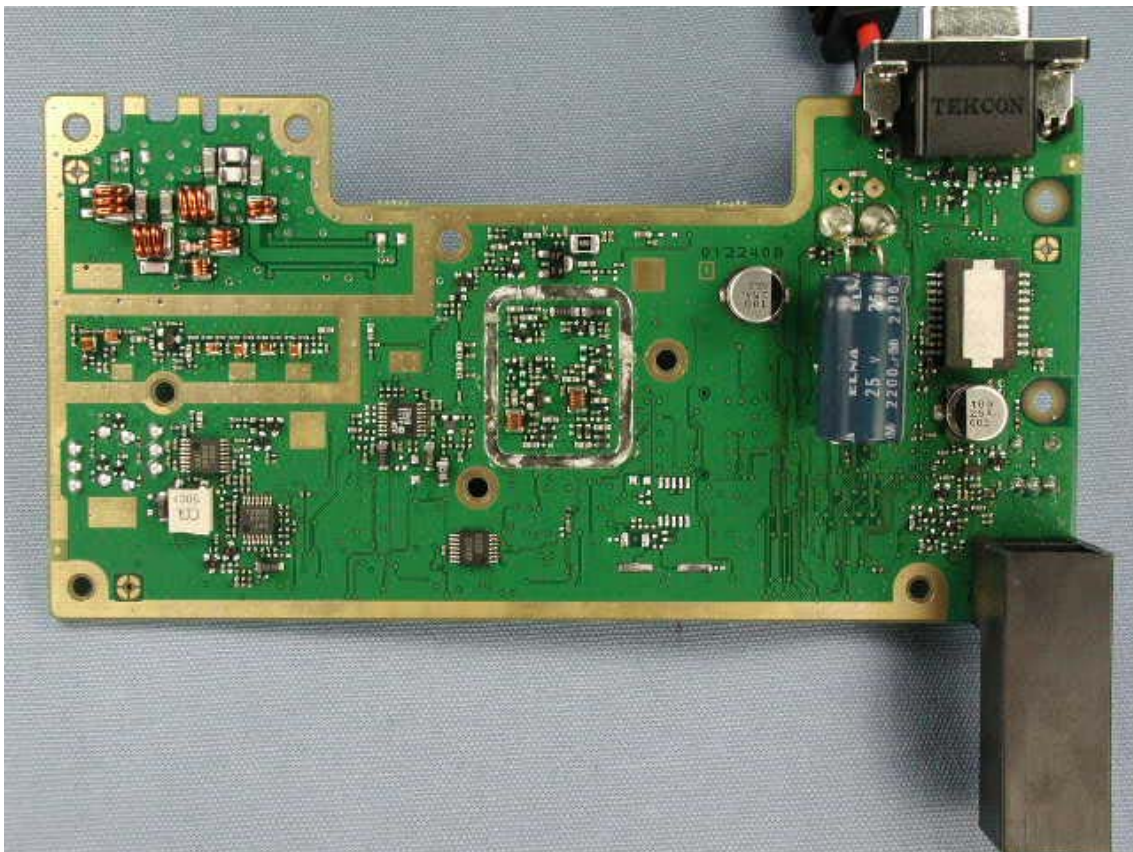
Side-A of MAIN-UNIT without shield case



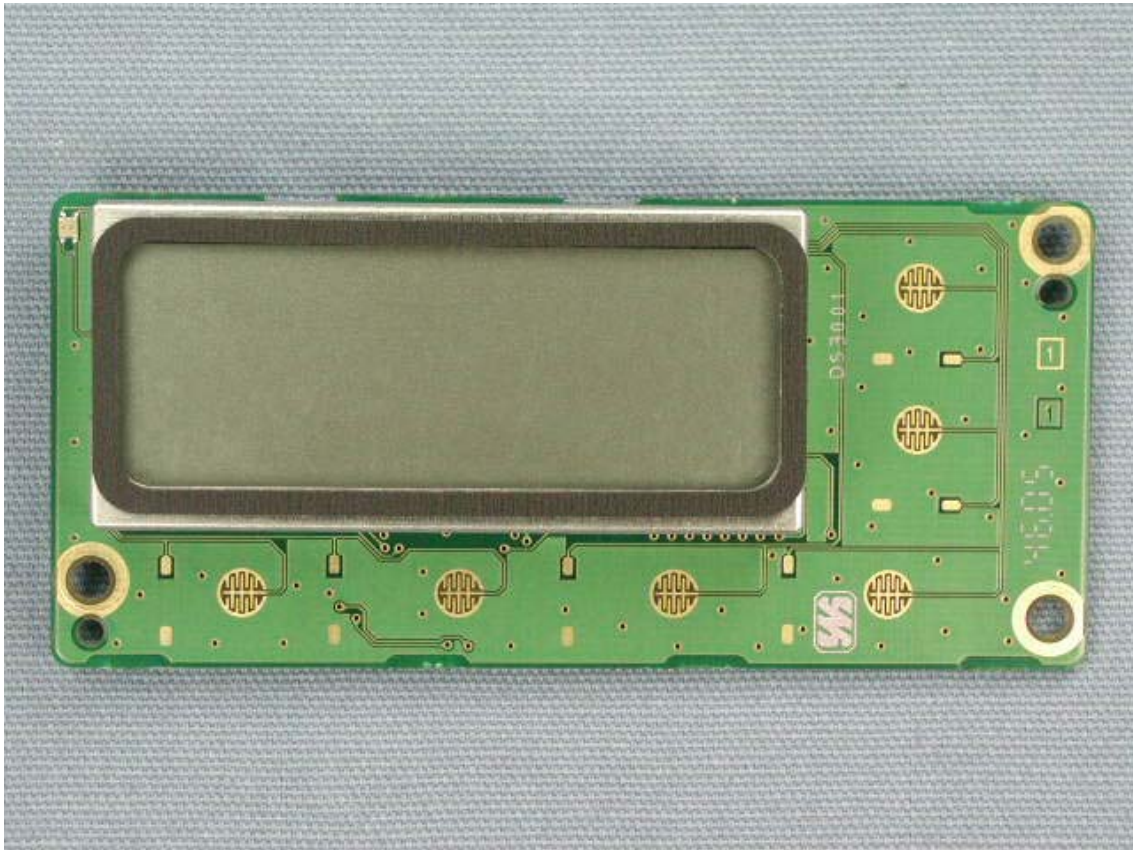
Side-B of MAIN-UNIT with shield case



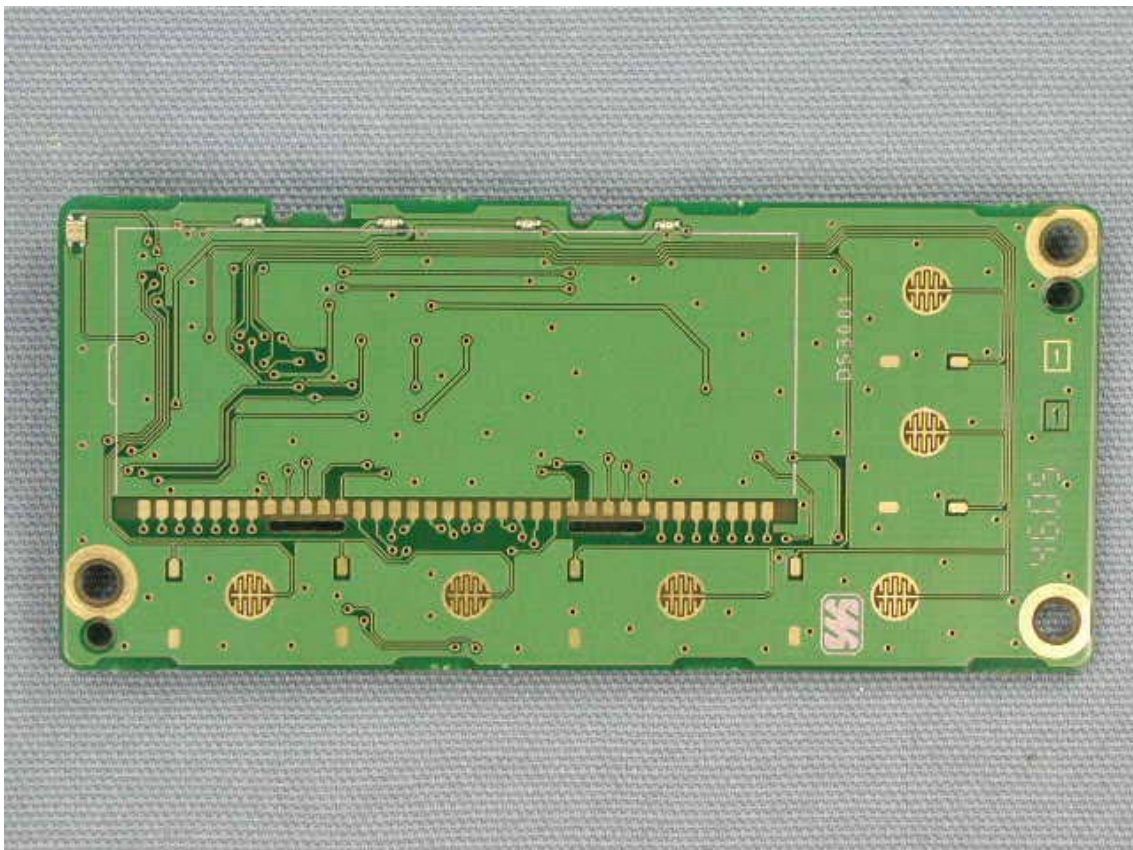
Side-B of MAIN-UNIT without shield case



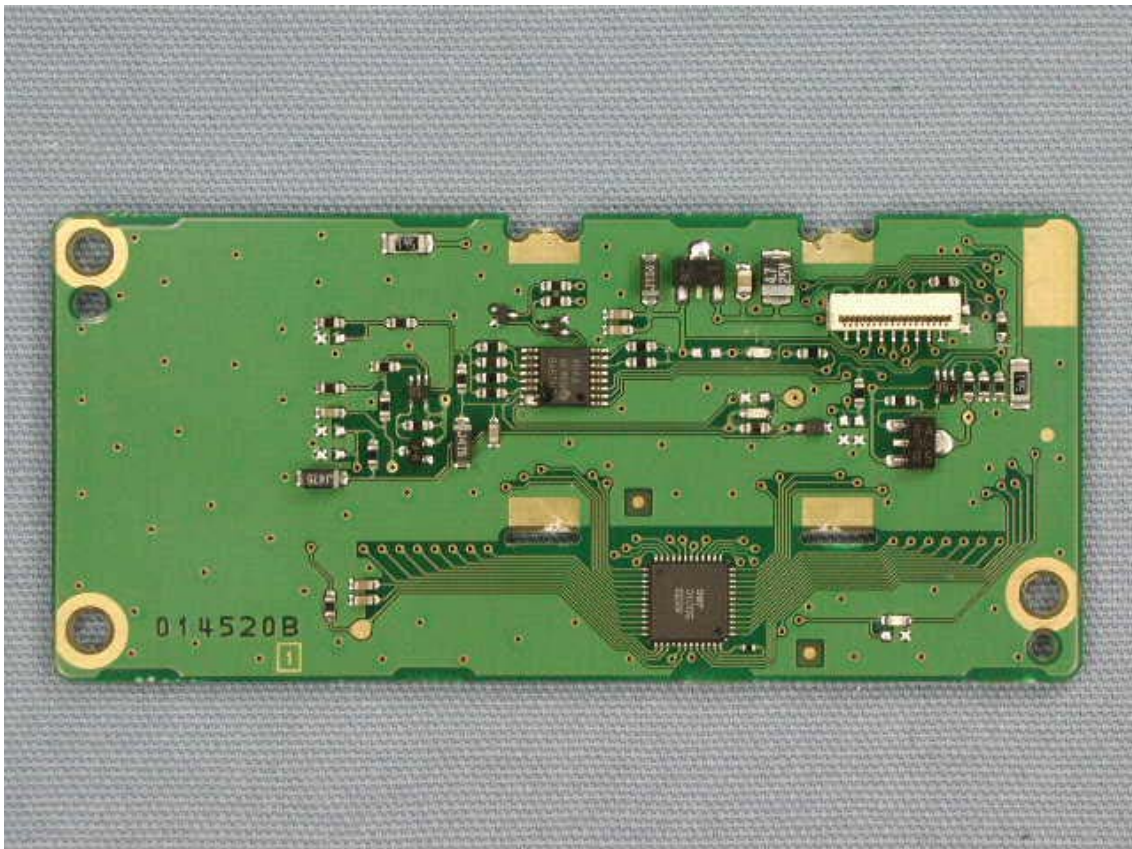
Side-A of FRONT-B-UNIT with LCD



Side-A of FRONT-B-UNIT without LCD



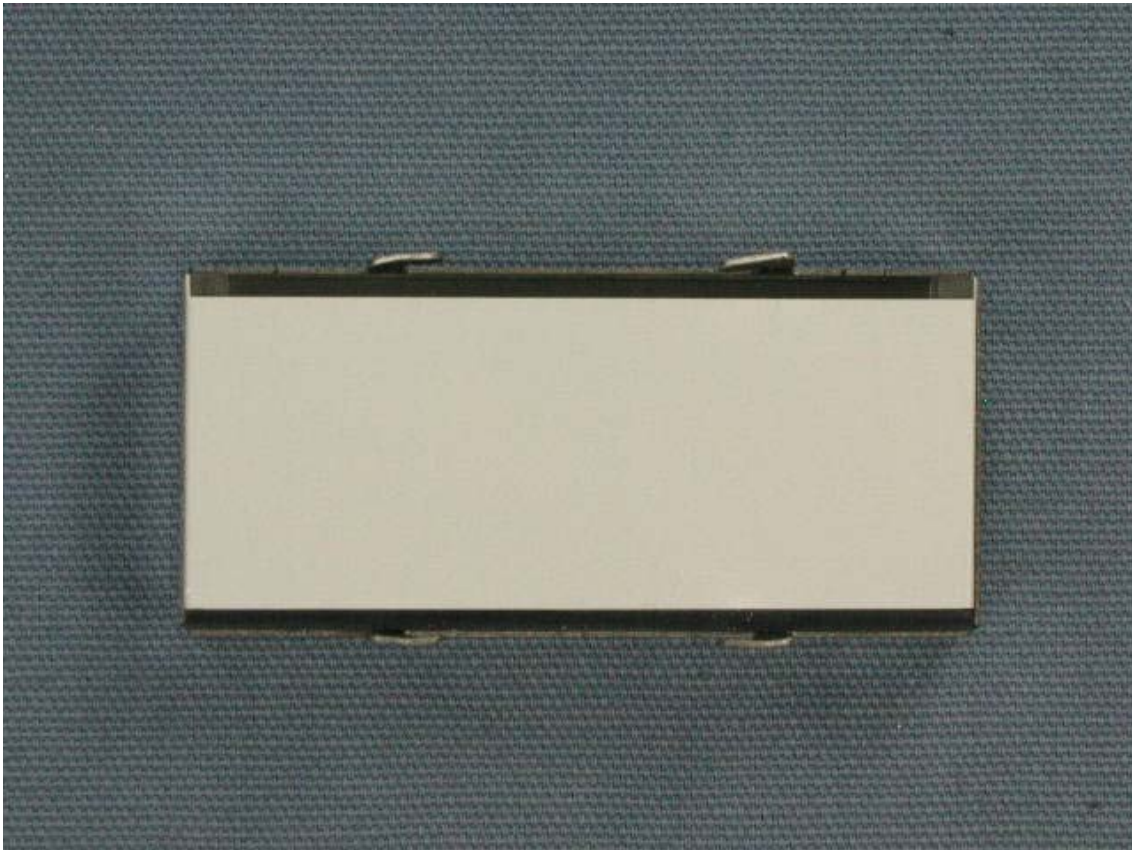
Side-B of FRONT-B-UNIT



Front of LCD



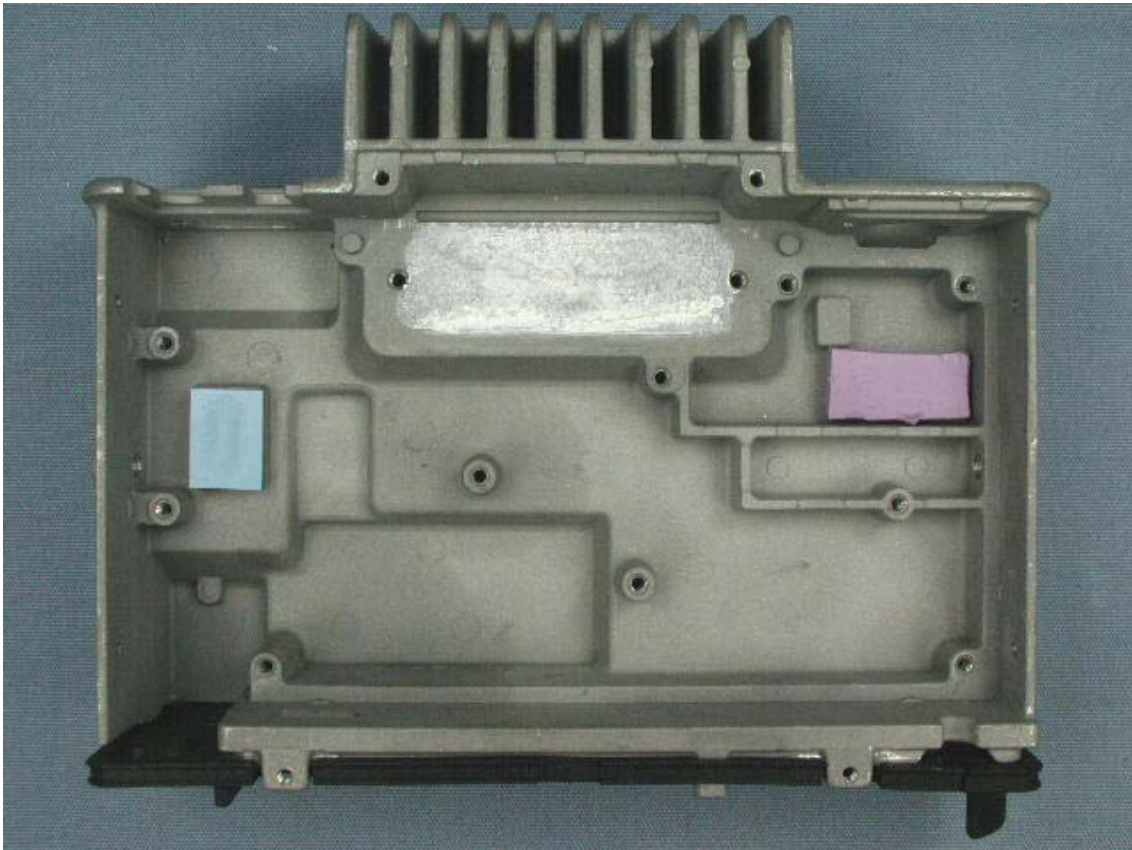
Back of LCD



Inside of front panel



Inside of chassis



Inside of microphone

