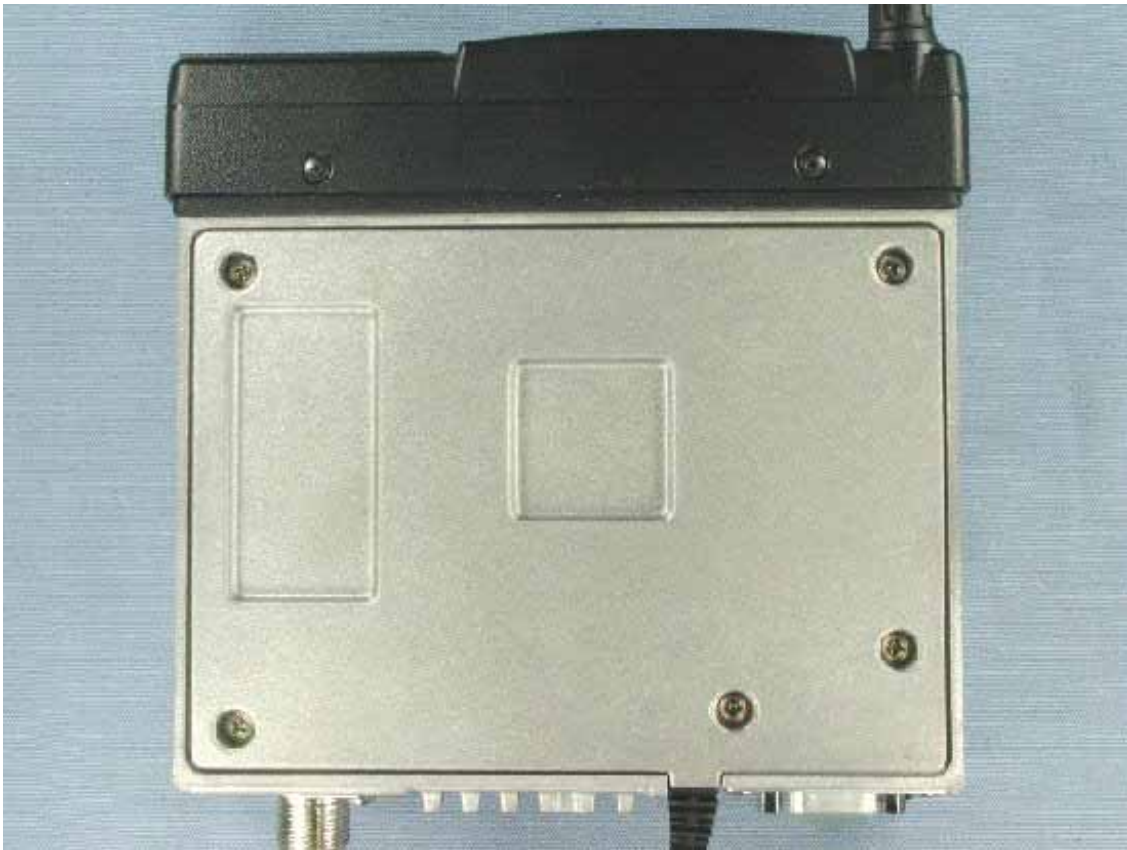


Removed top cover

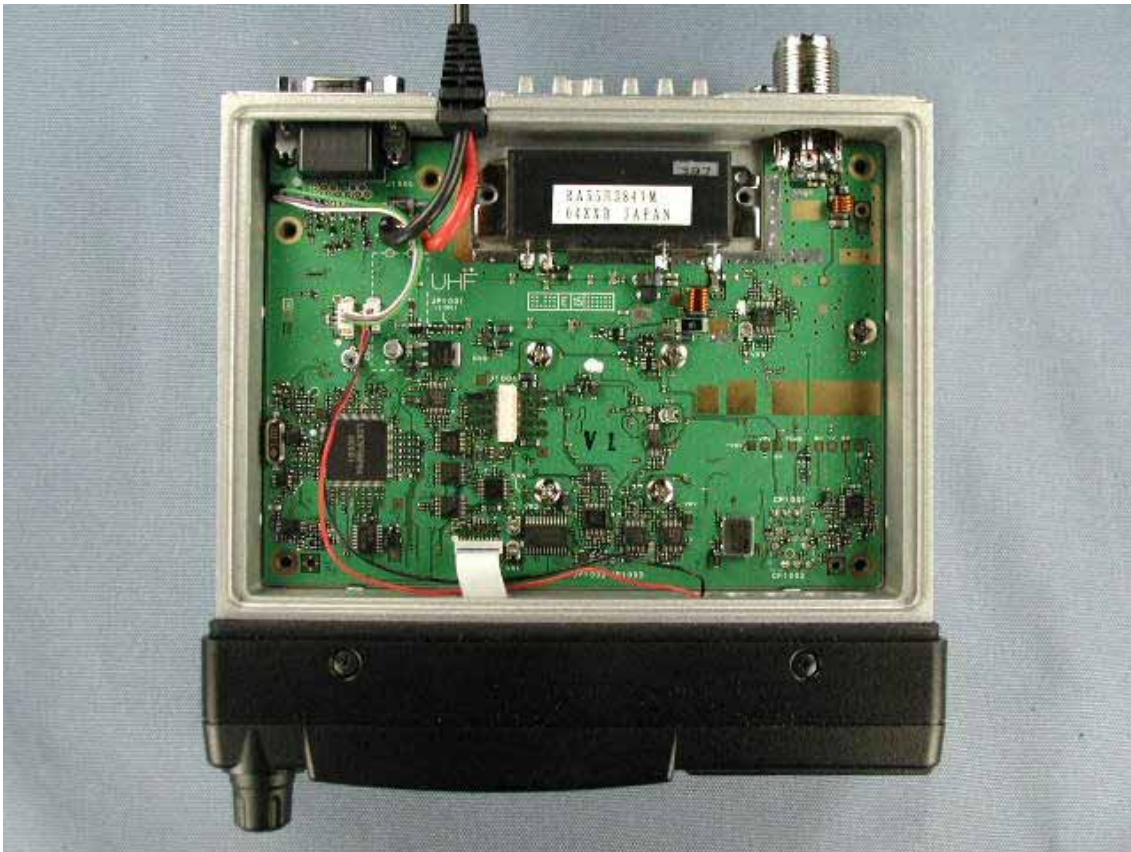


Inside of EUT with shield case and MODEM-UNIT

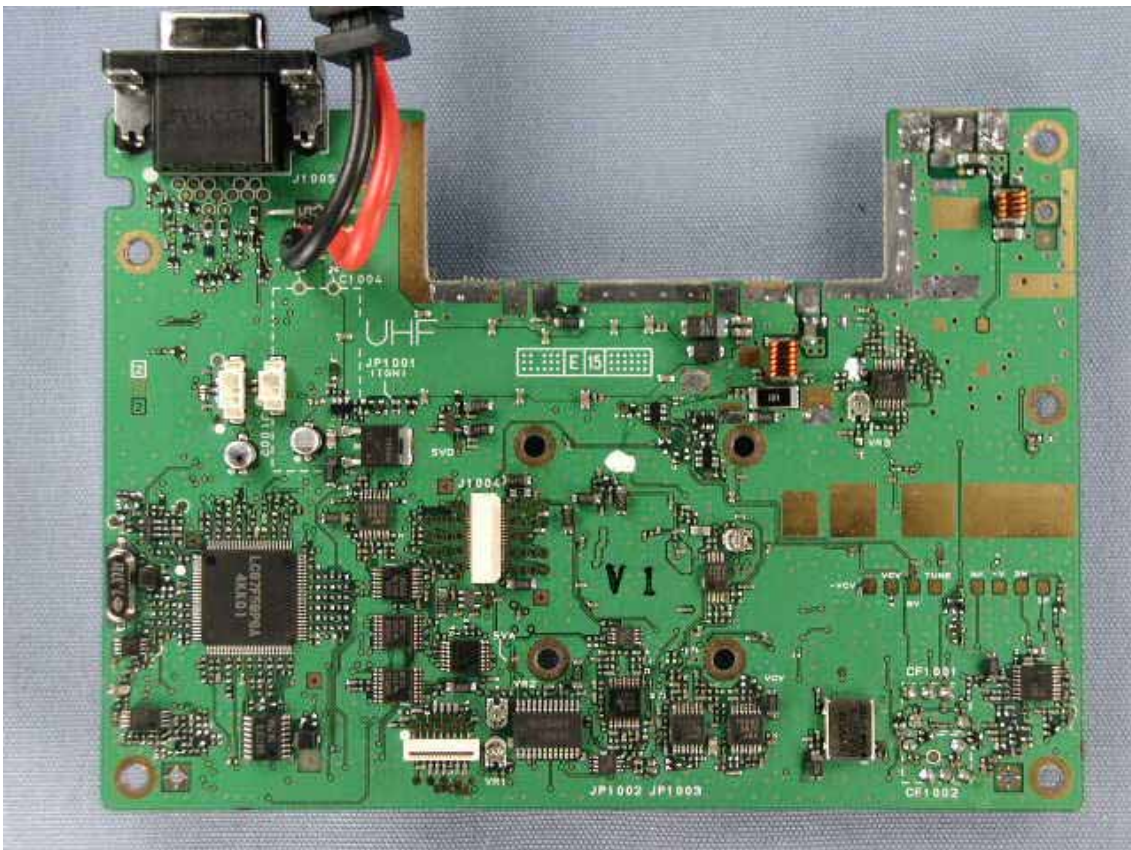




Inside of EUT without shield case and MODEM-UNIT

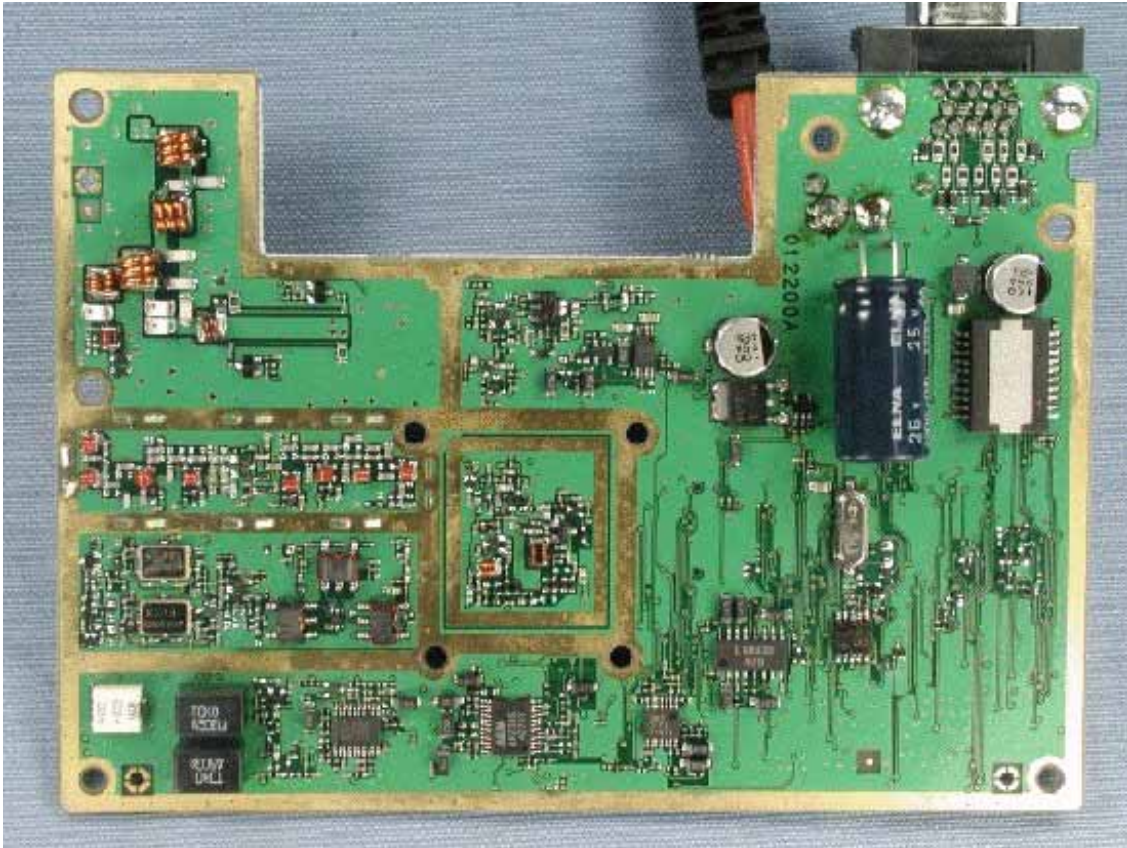


Side-A of RF-UNIT

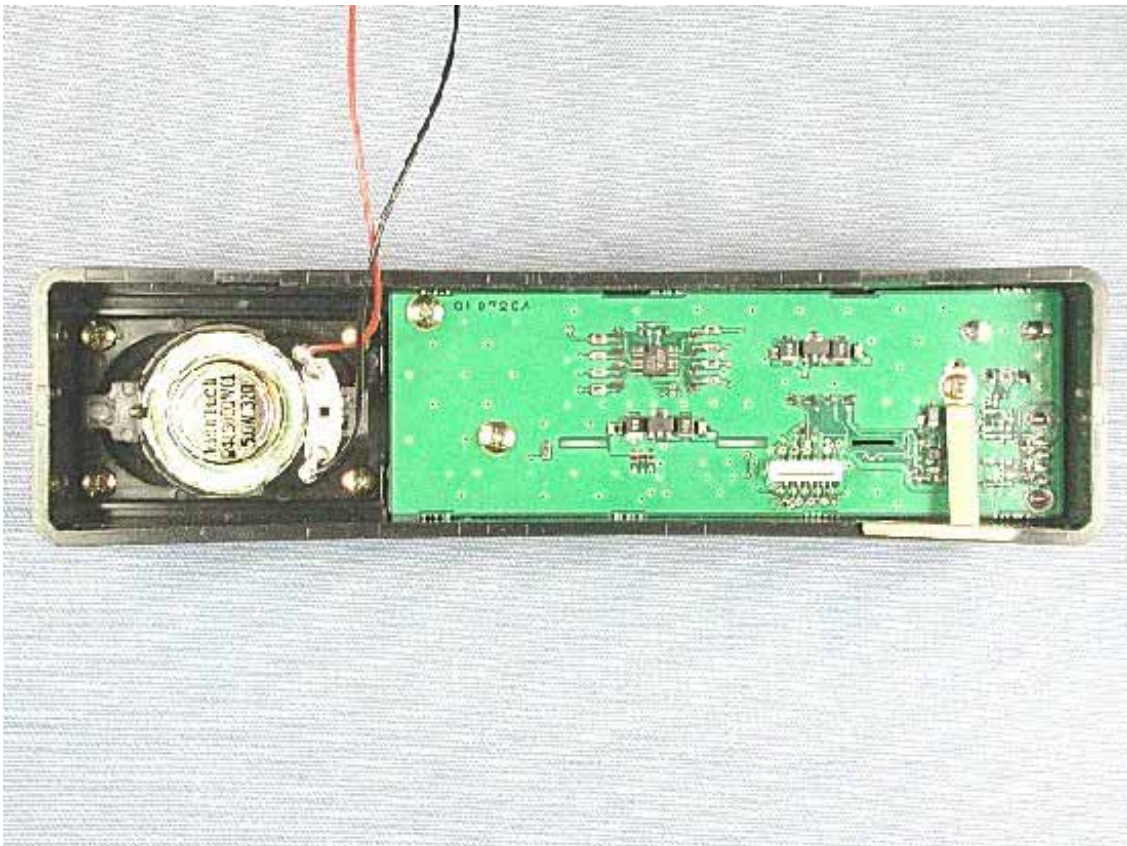




Side-B of RF-UNIT

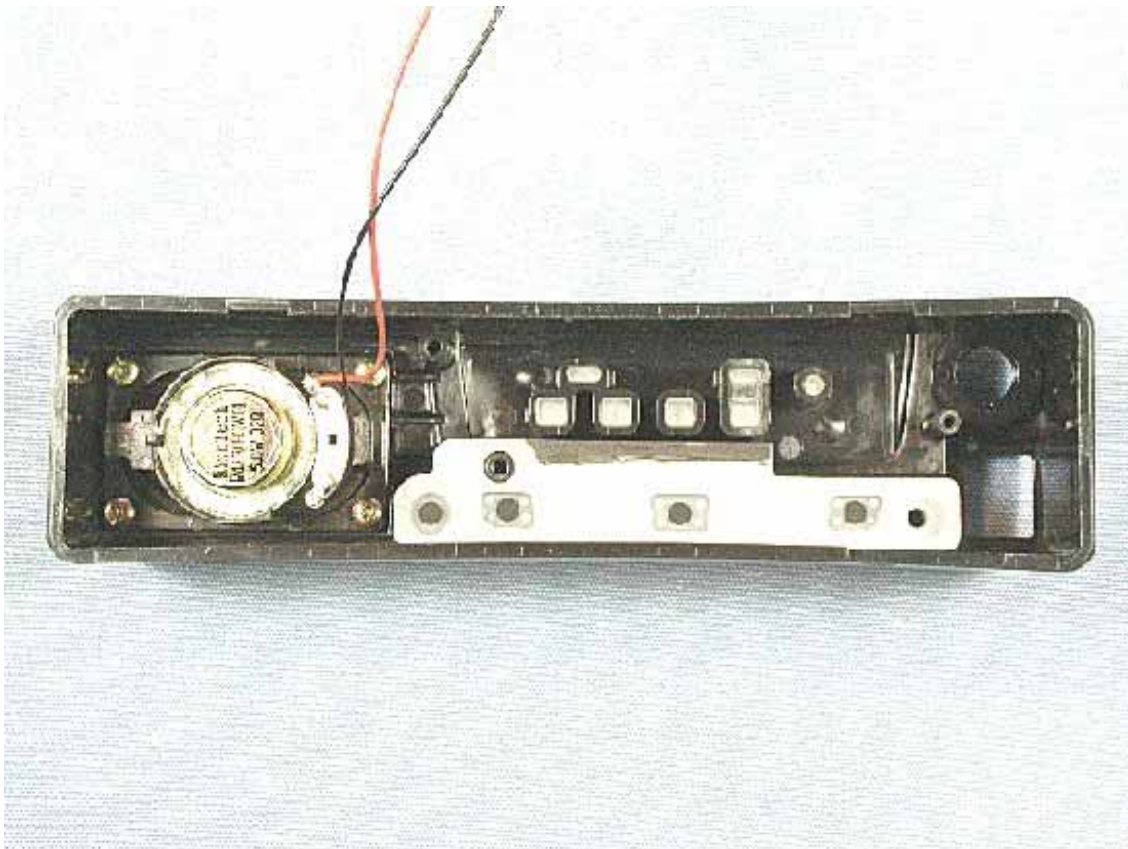


Inside of front panel with PWB (FRONT-C-UNIT (for VX-7100))

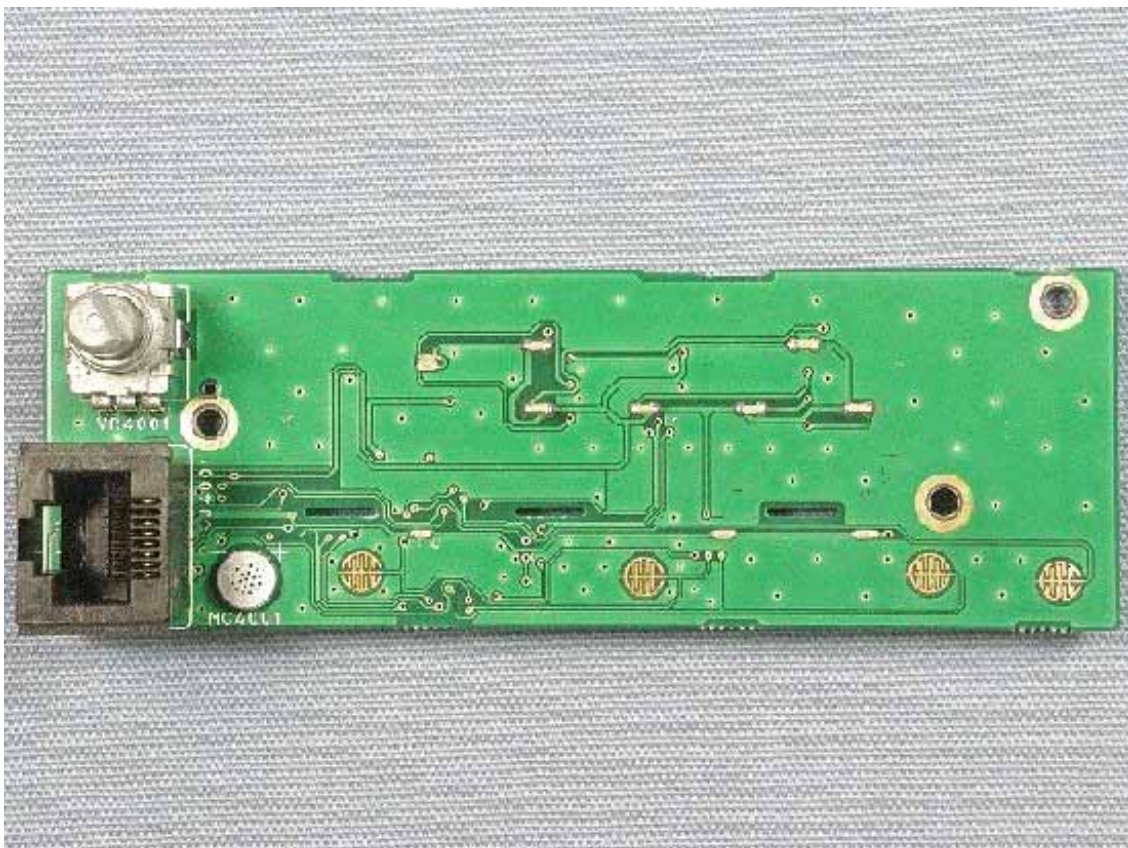




Inside of front panel (for FRONT-C-UNIT (for VX-7100))

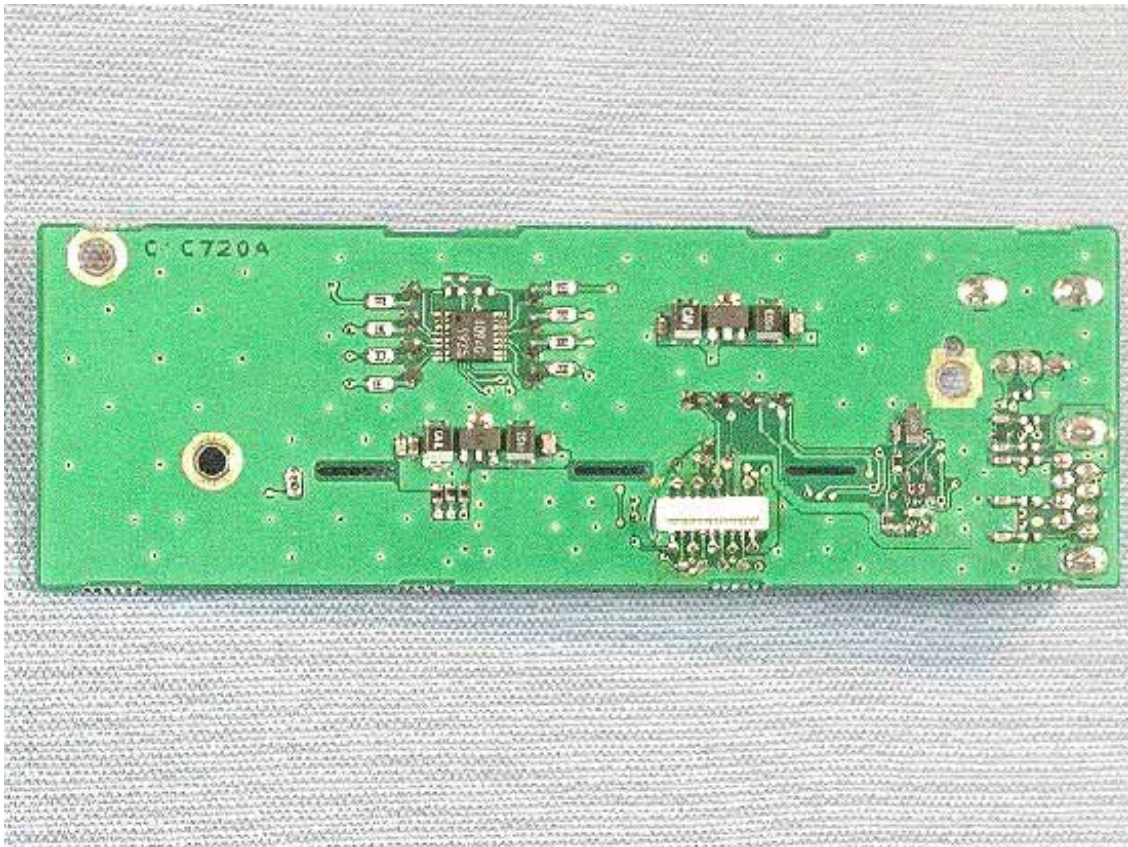


Side-A of FRONT-C-UNIT (for VX-7100)

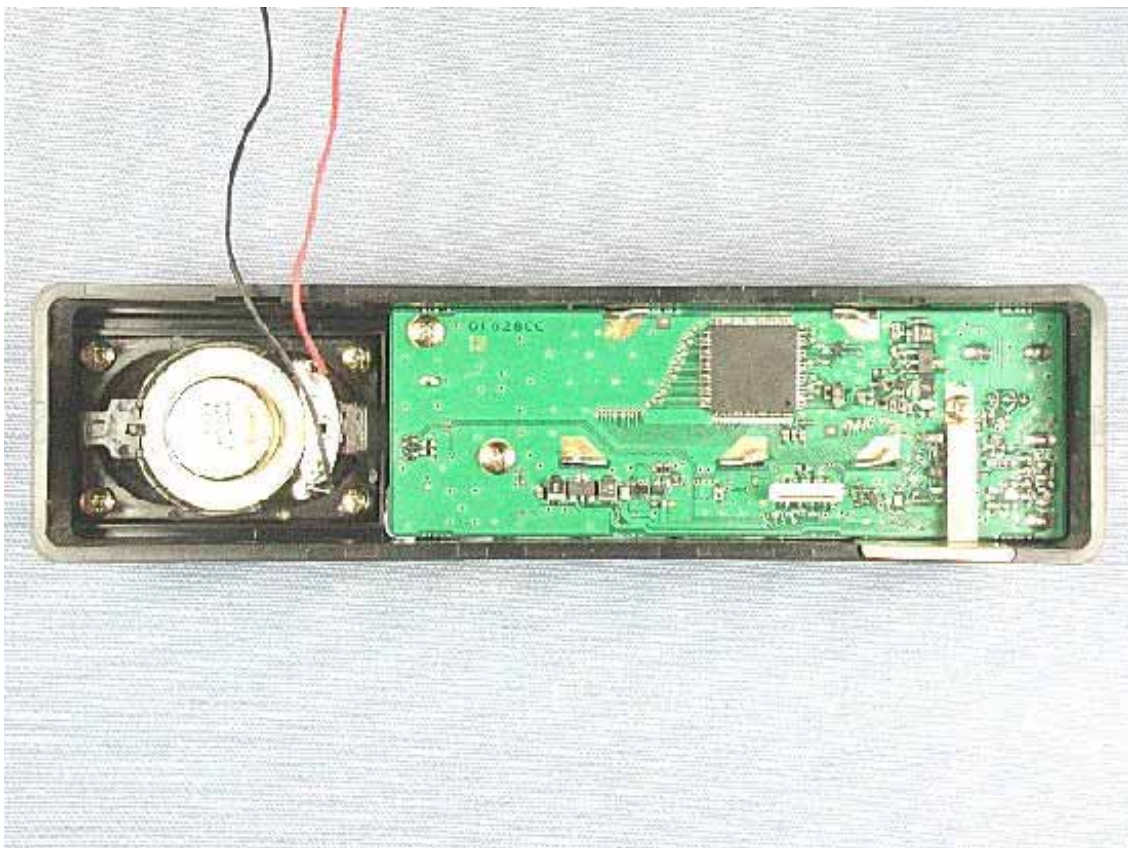




Side-B of FRONT-C-UNIT (for VX-7100)

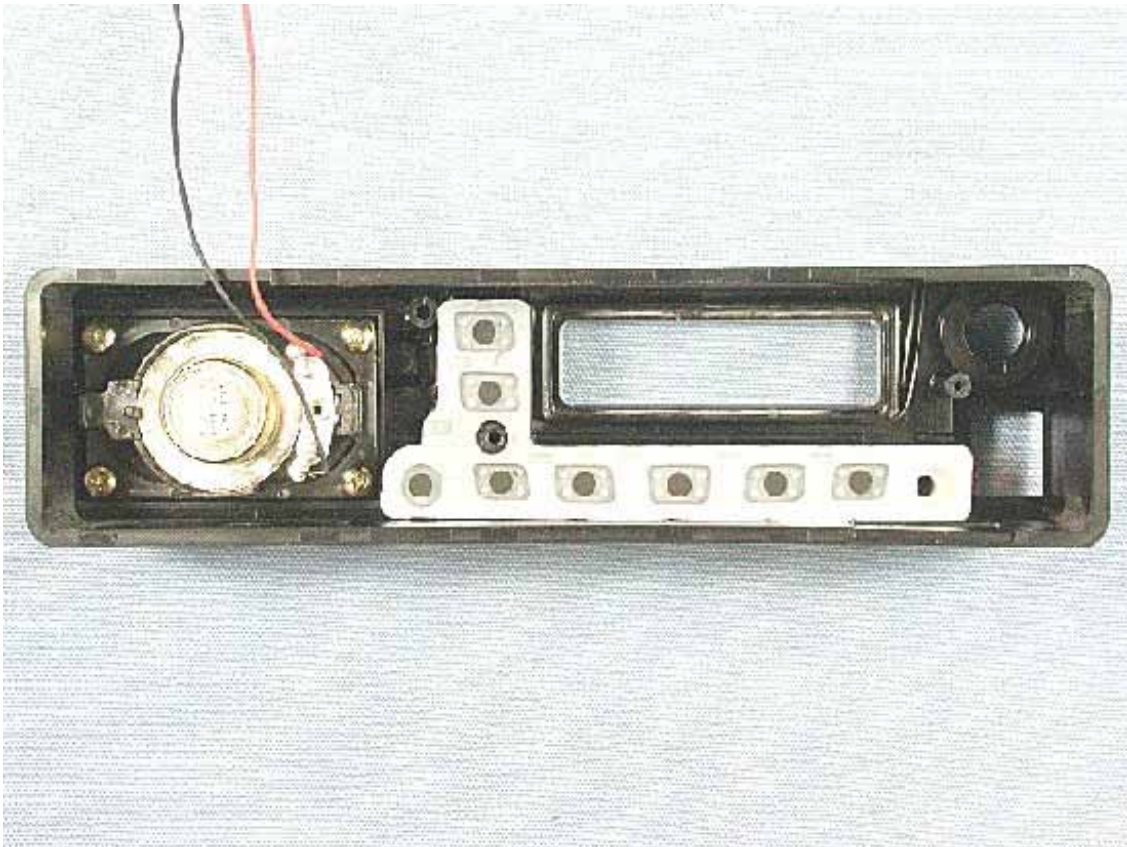


Inside of front panel with PWB (FRONT-D-UNIT (for VX-7200))

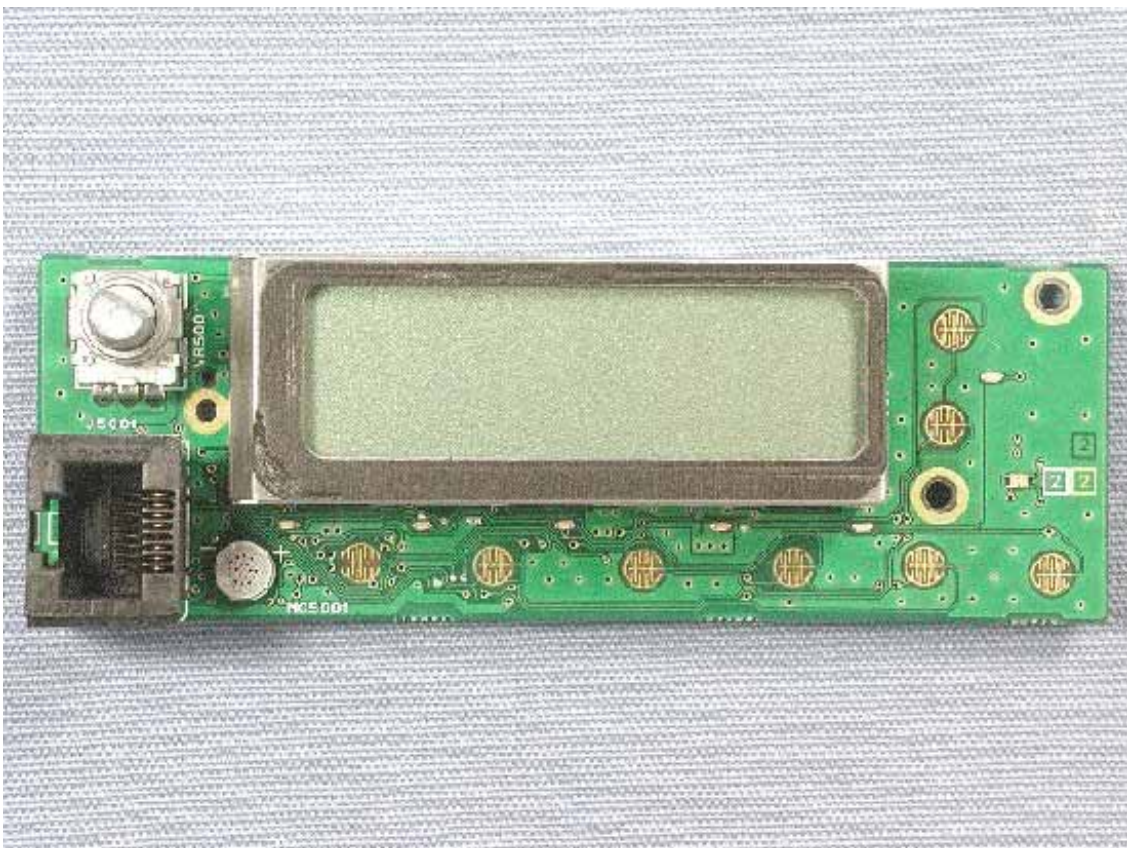




Inside of front panel (for FRONT-D-UNIT (for VX-7200))

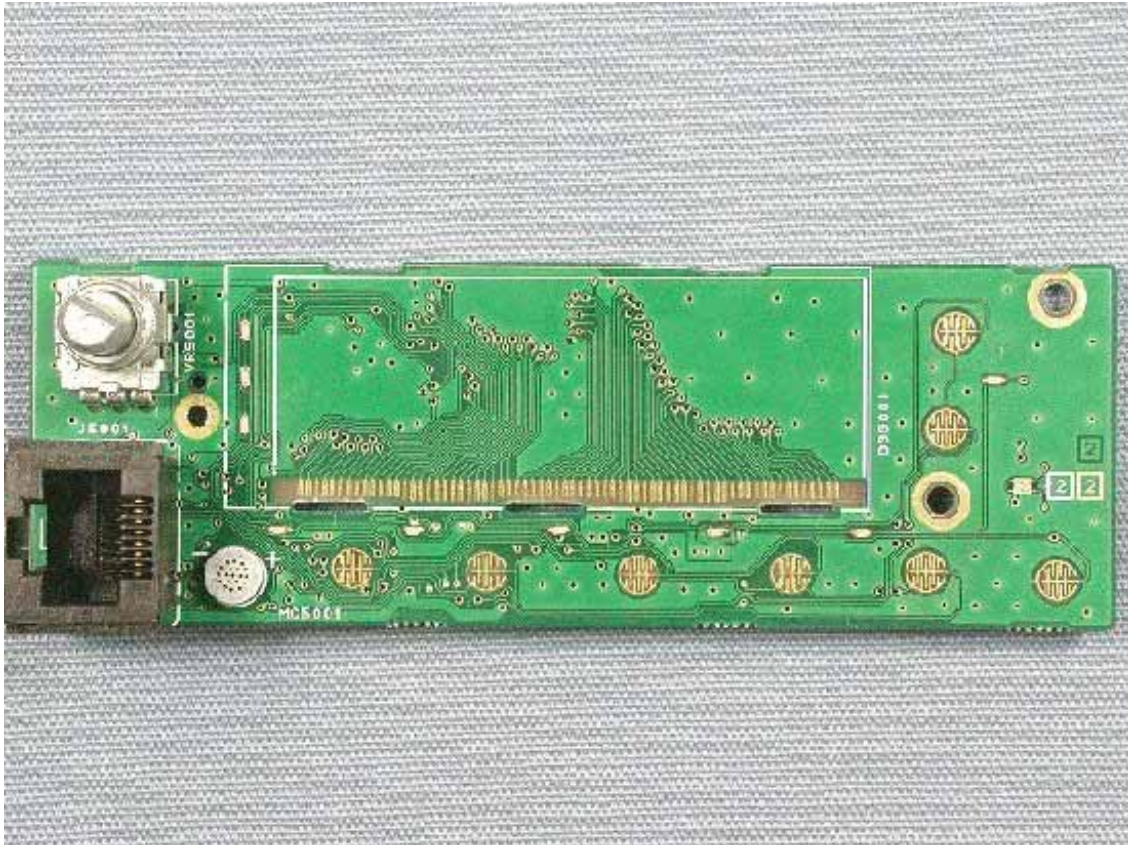


Side-A of FRONT-D-UNIT (for VX-7200) with LCD

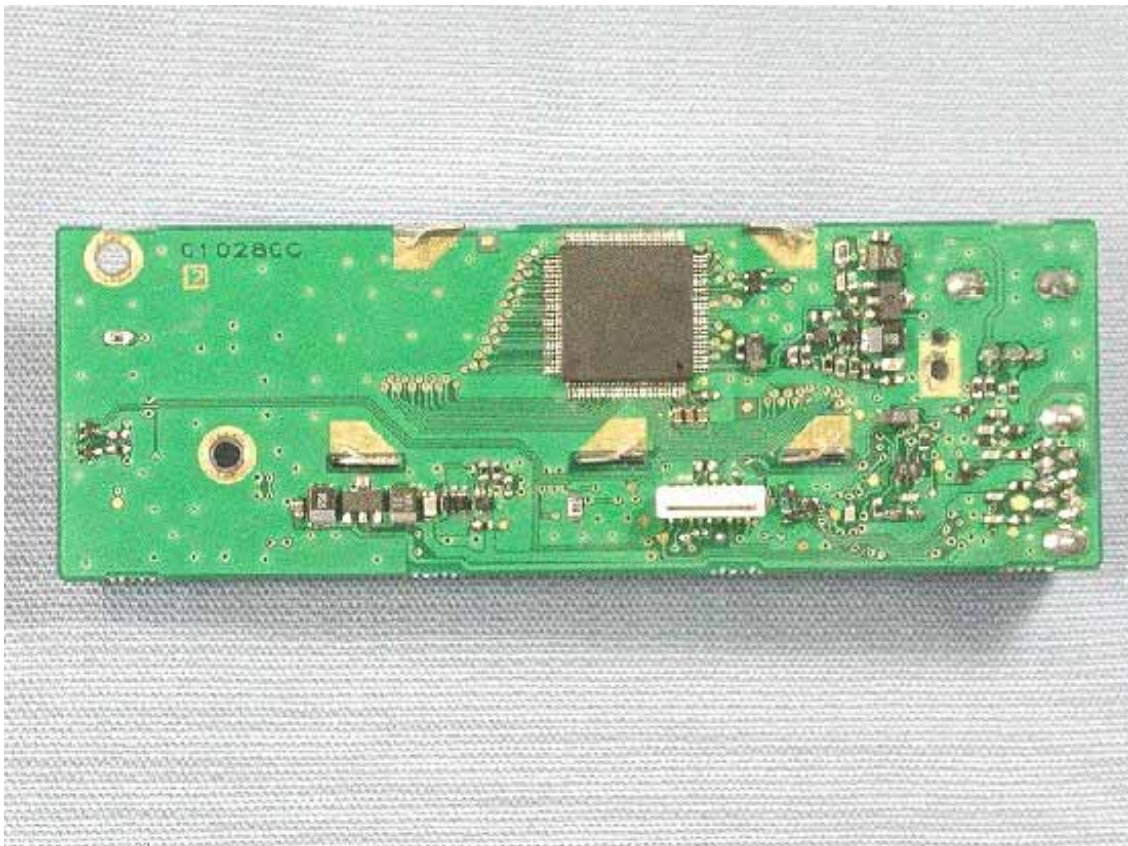




Side-A of FRONT-D-UNIT (for VX-7200) without LCD



Side-B of FRONT-D-UNIT (for VX-7200)





Front of LCD (for VX-7200)



Back of LCD (for VX-7200)

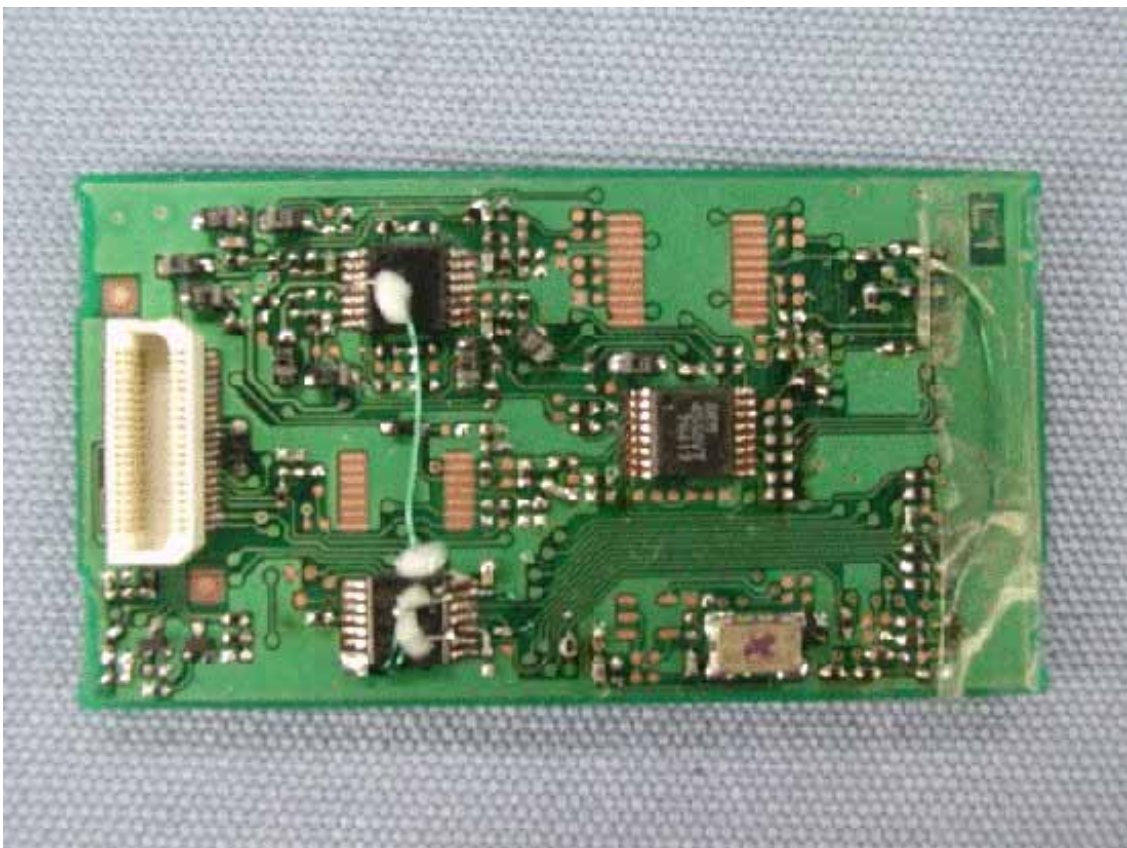




Side-A of MODEM-UNIT

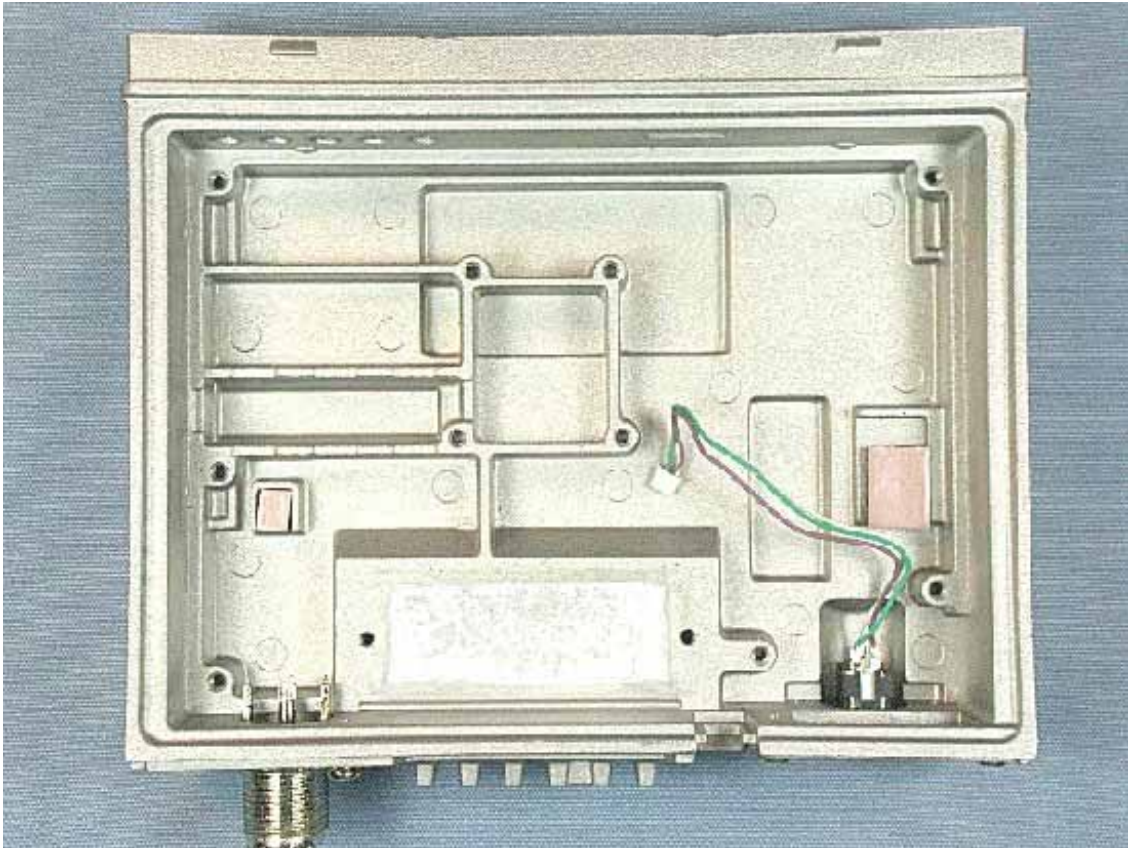


Side-B of MODEM-UNIT

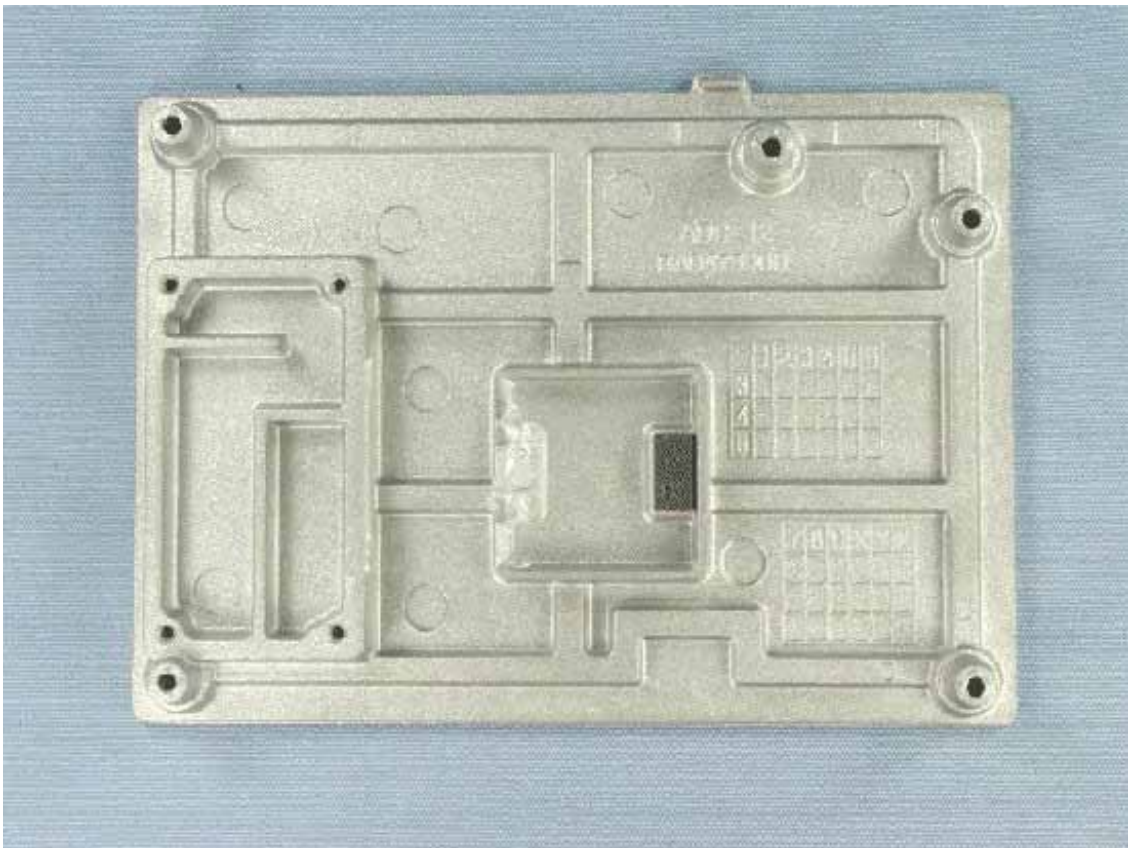




Inside of chassis



Inside of top case





Inside of top cover



Inside of microphone

