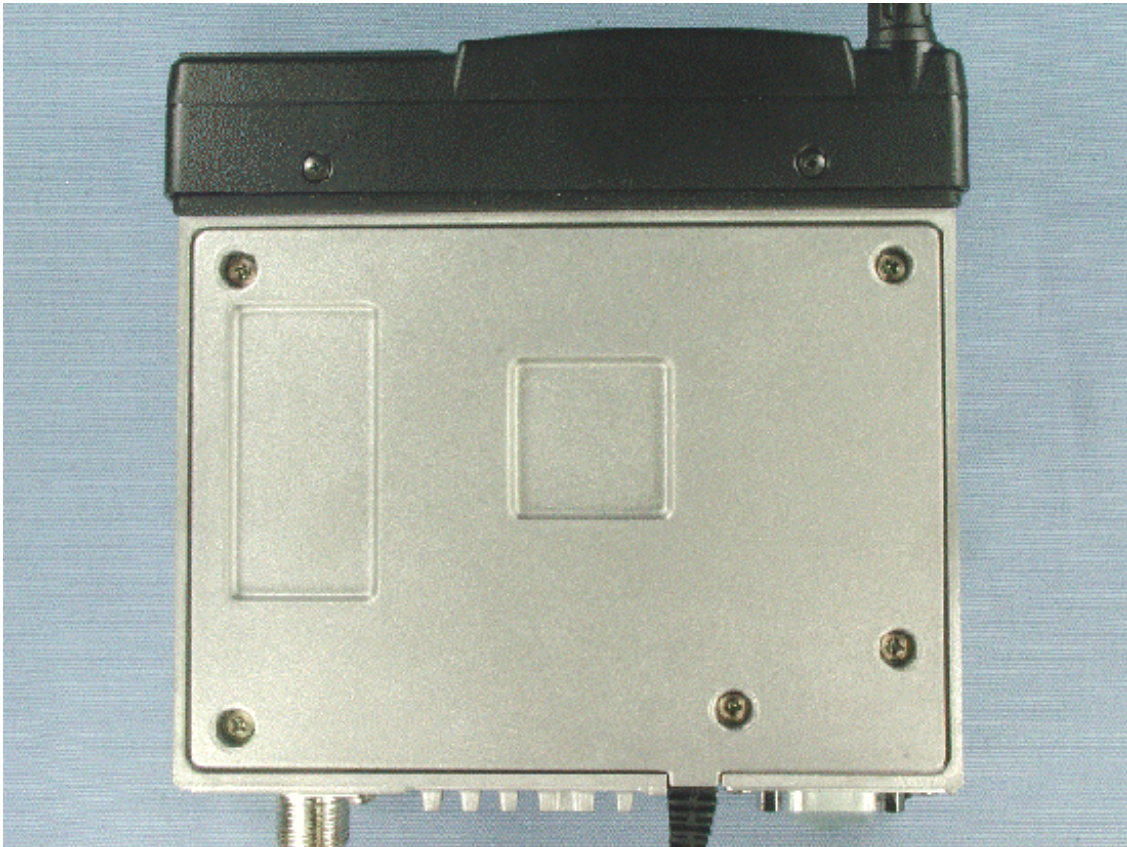
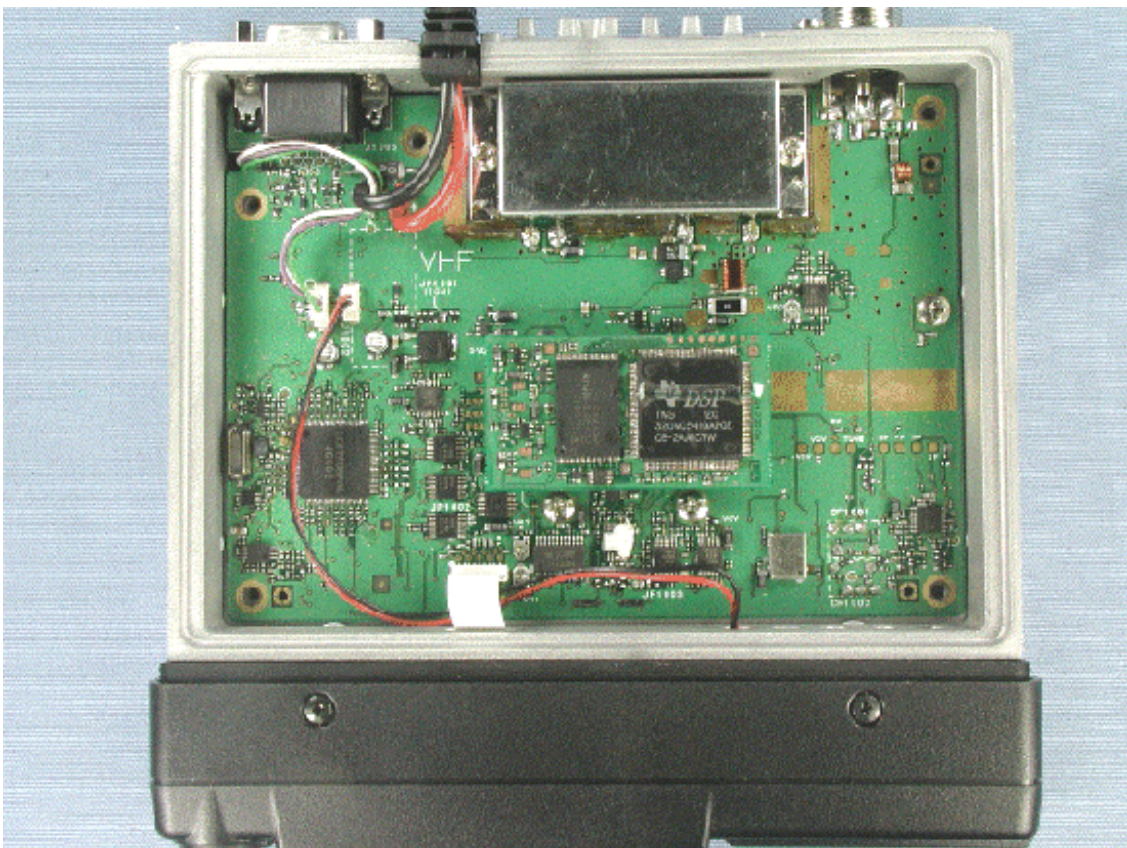


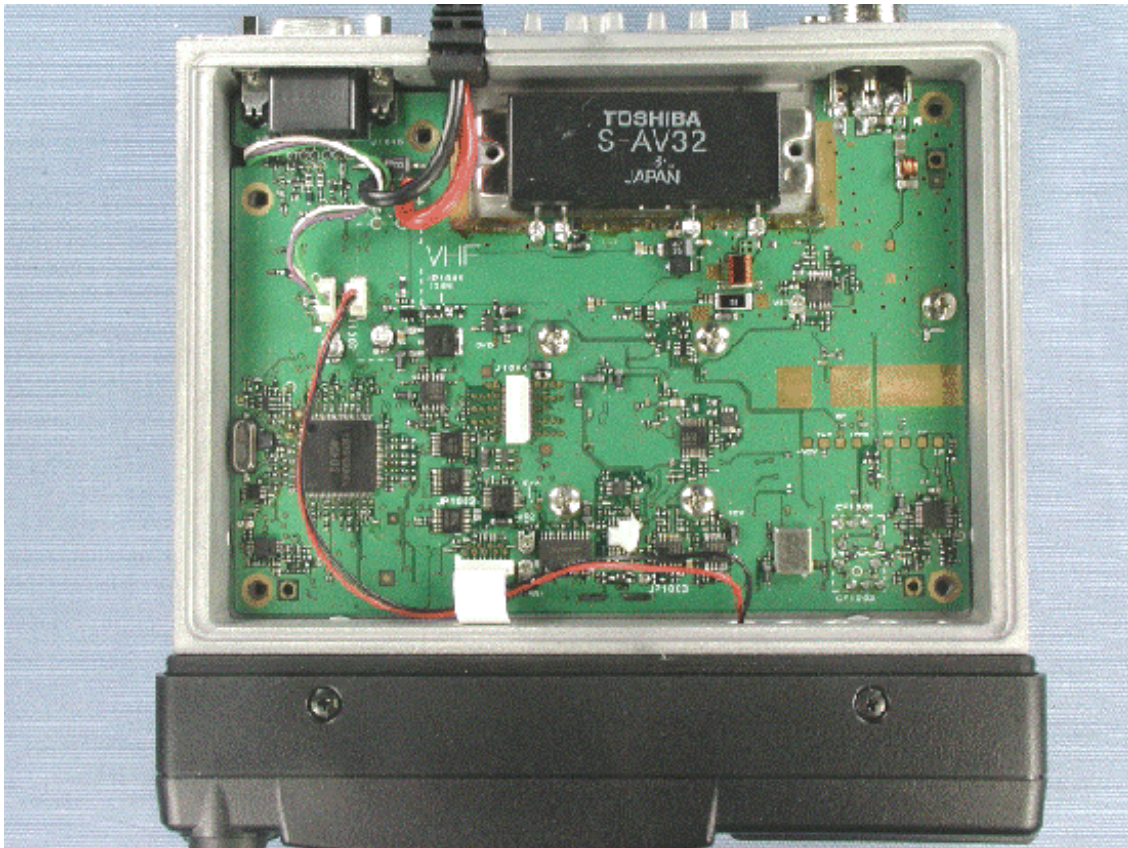
Removed top cover



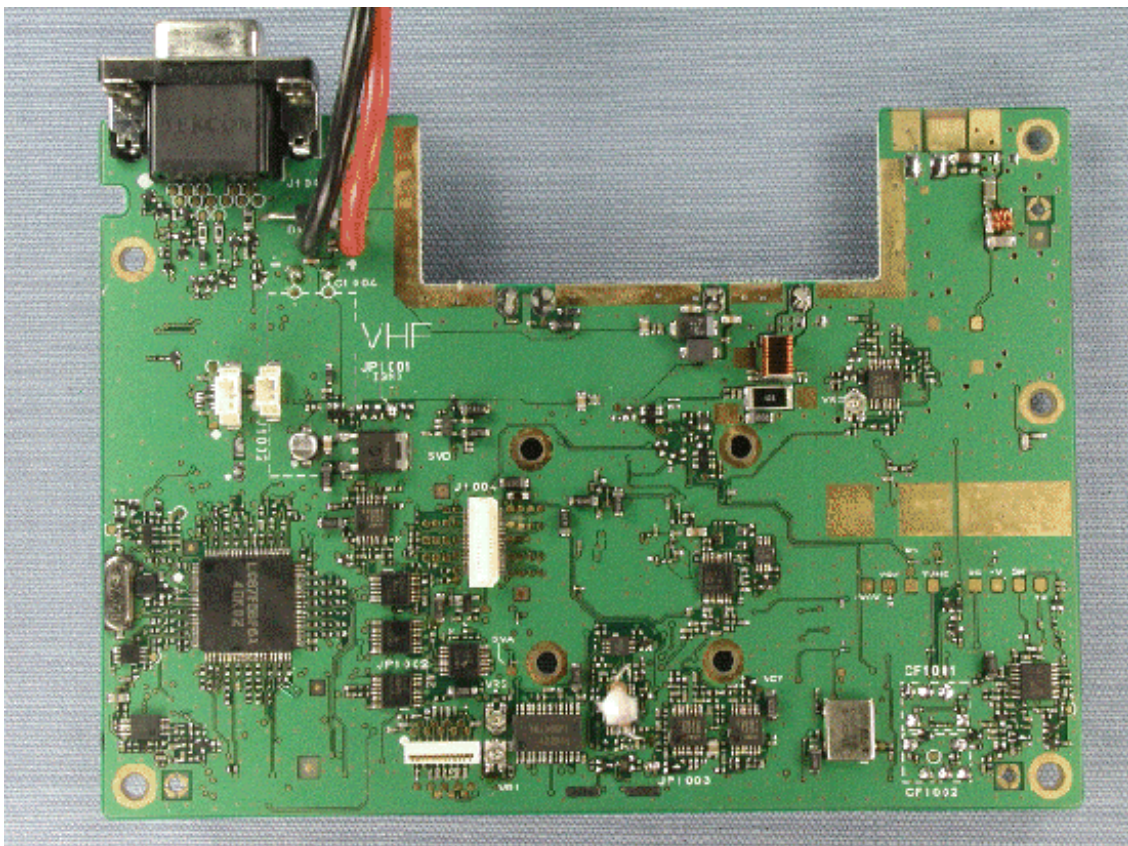
Inside of EUT with shield case and MODEM-UNIT



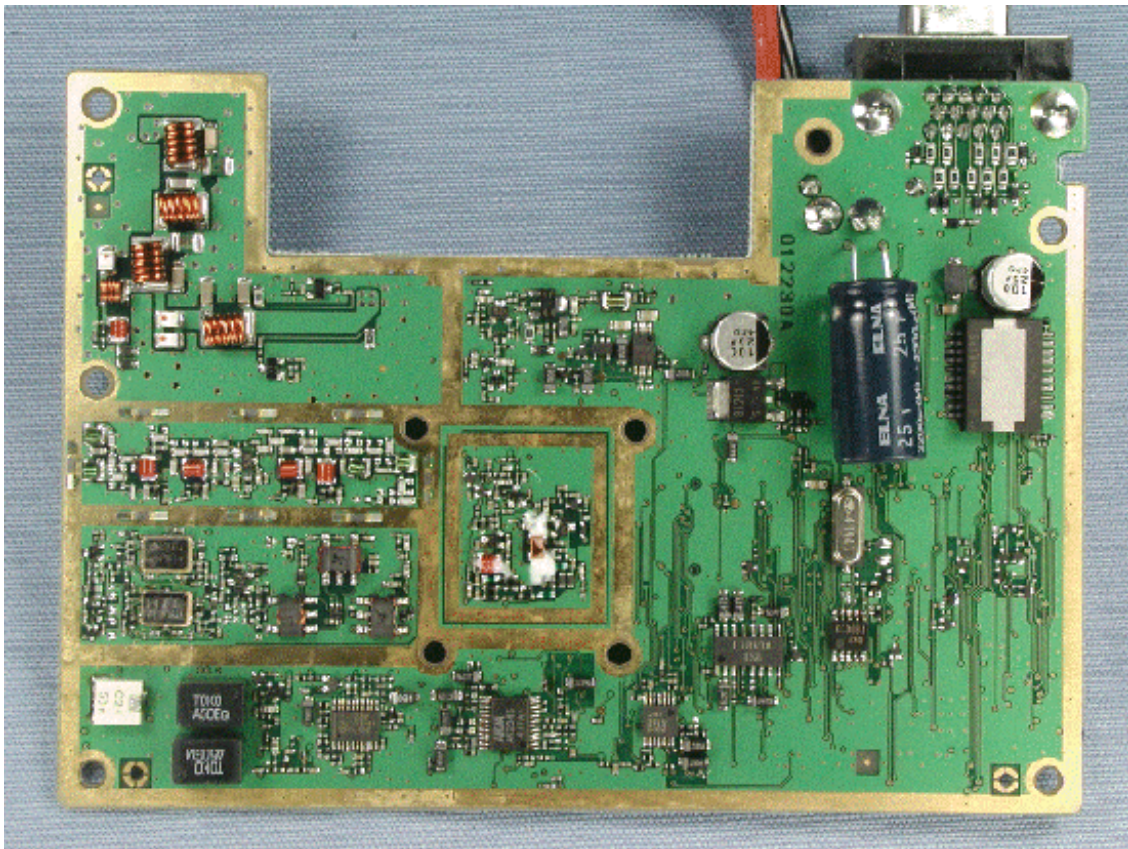
Inside of EUT without shield case and MODEM-UNIT



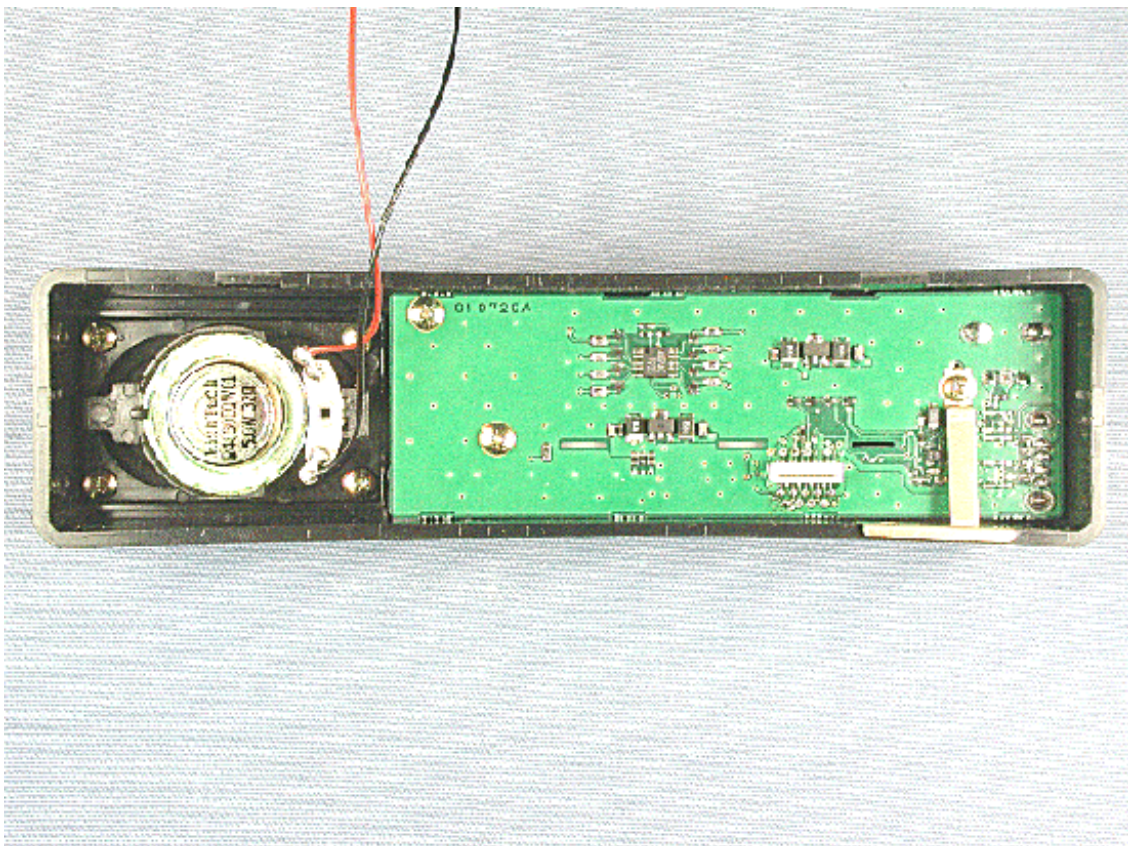
Side-A of RF-UNIT



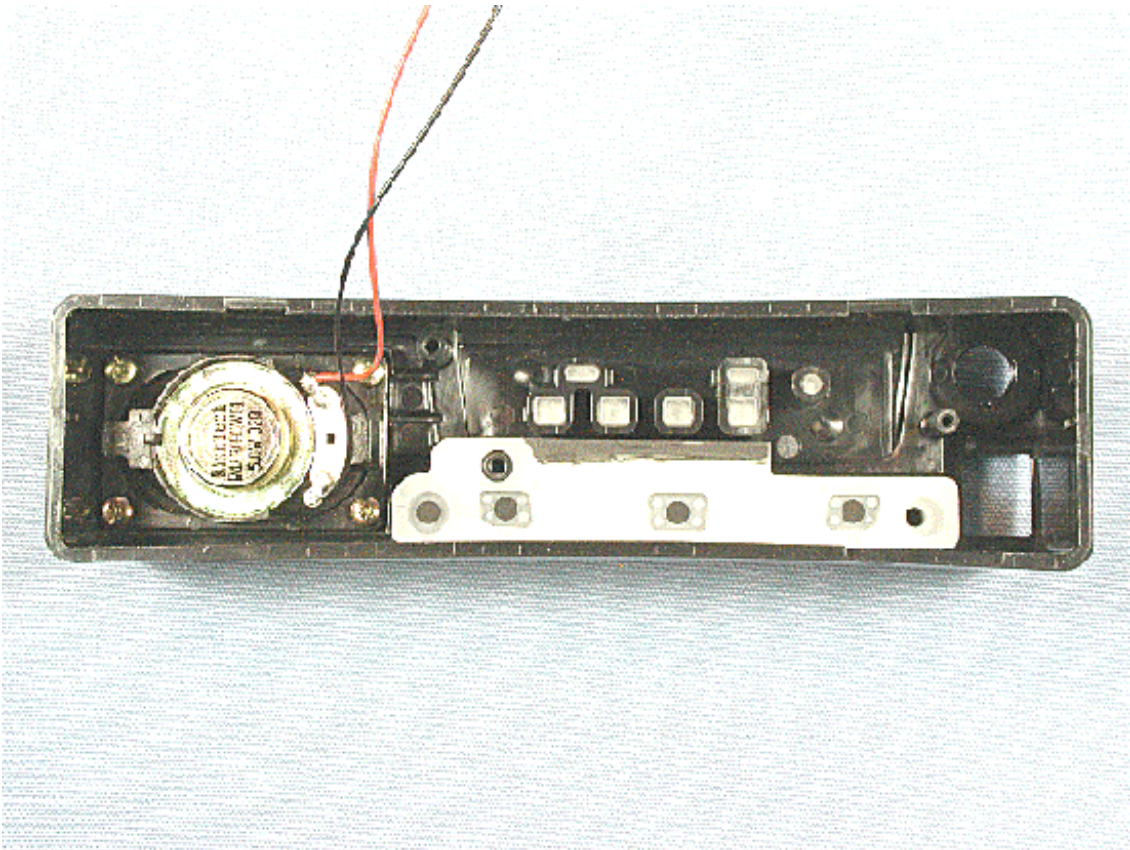
Side-B of RF-UNIT



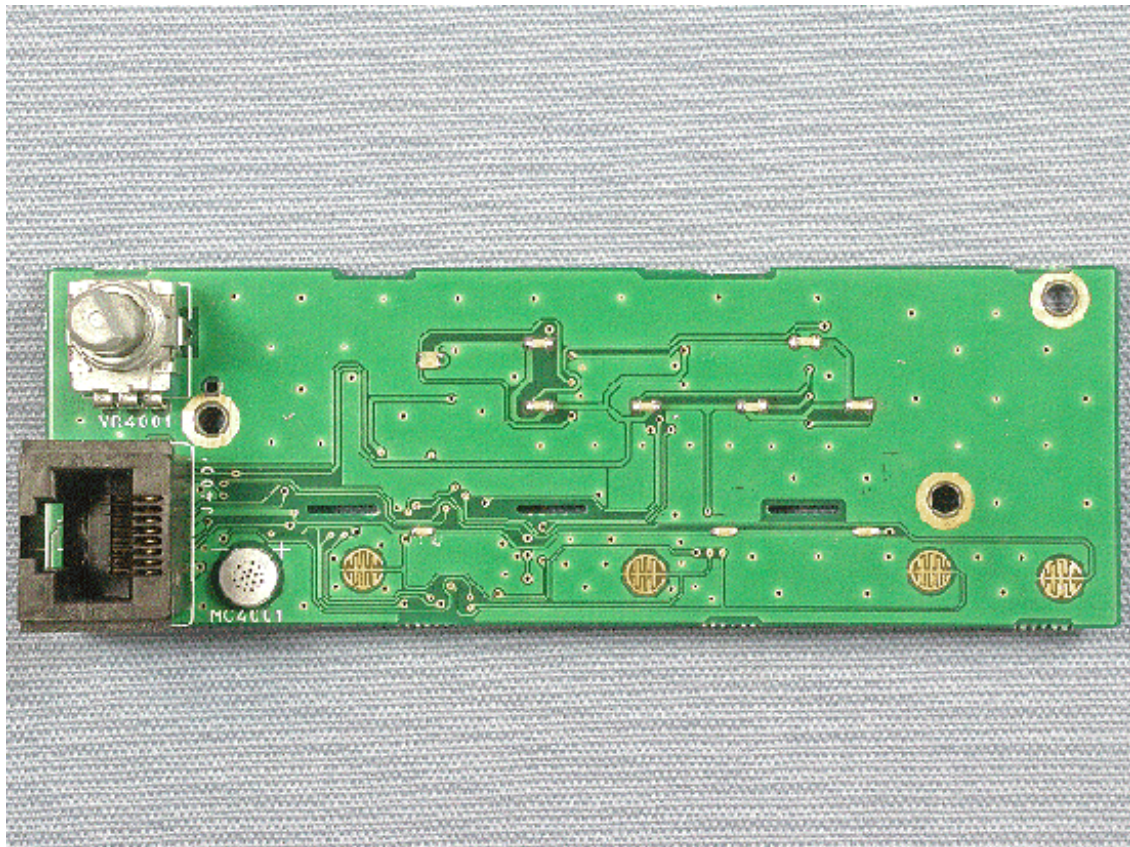
Inside of front panel with PWB (FRONT-C-UNIT (for VX-7100))



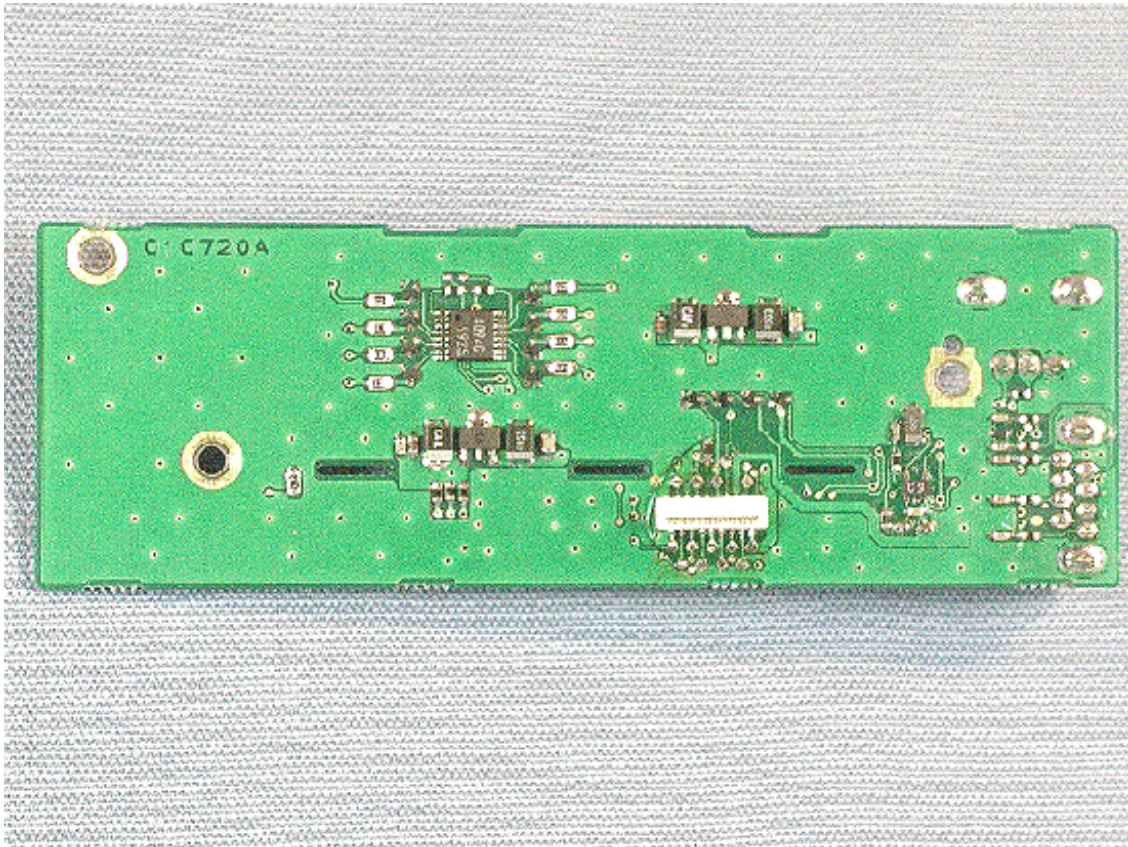
Inside of front panel (for FRONT-C-UNIT (for VX-7100))



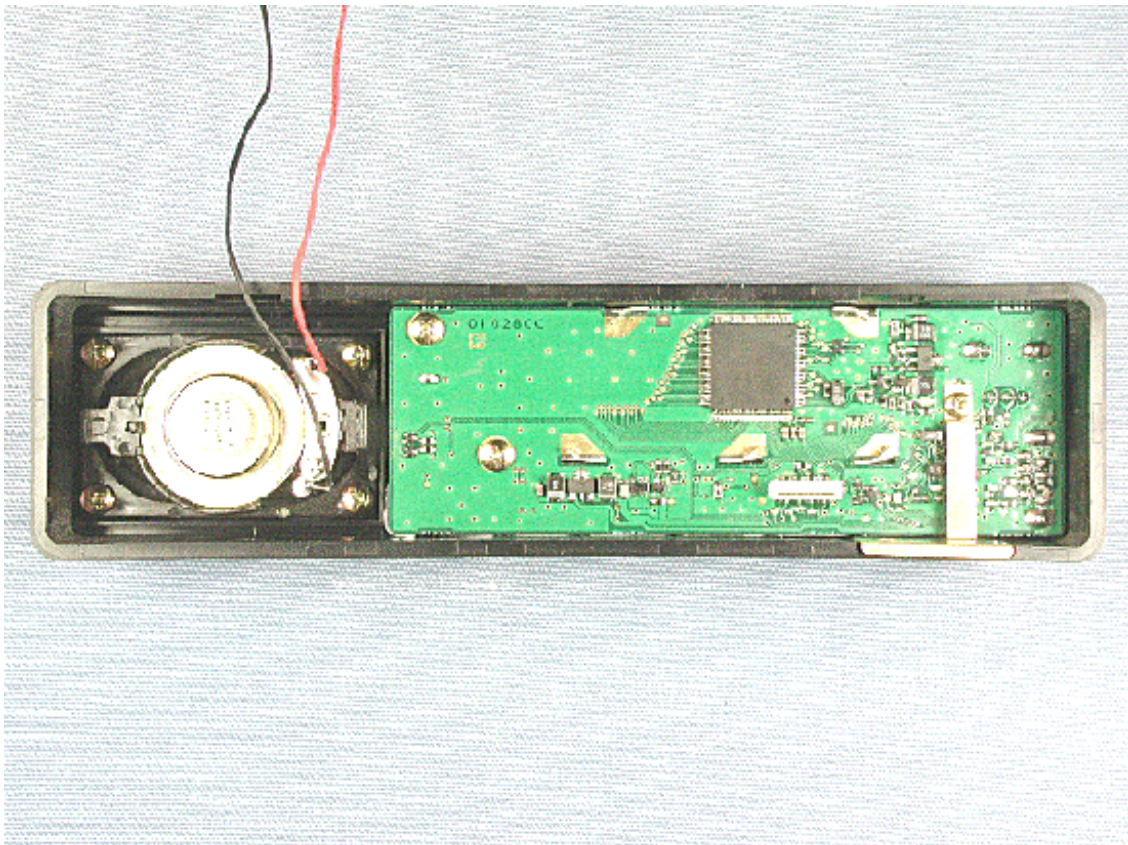
Side-A of FRONT-C-UNIT (for VX-7100)



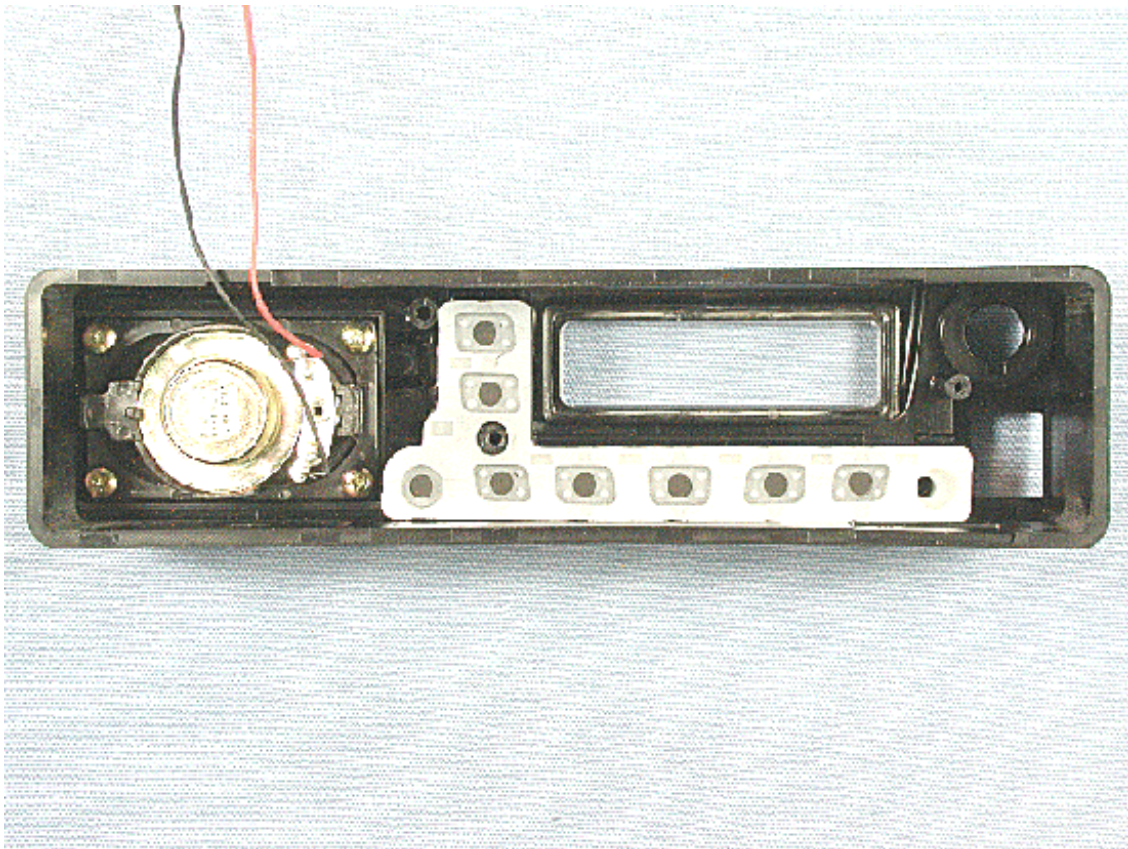
Side-B of FRONT-C-UNIT (for VX-7100)



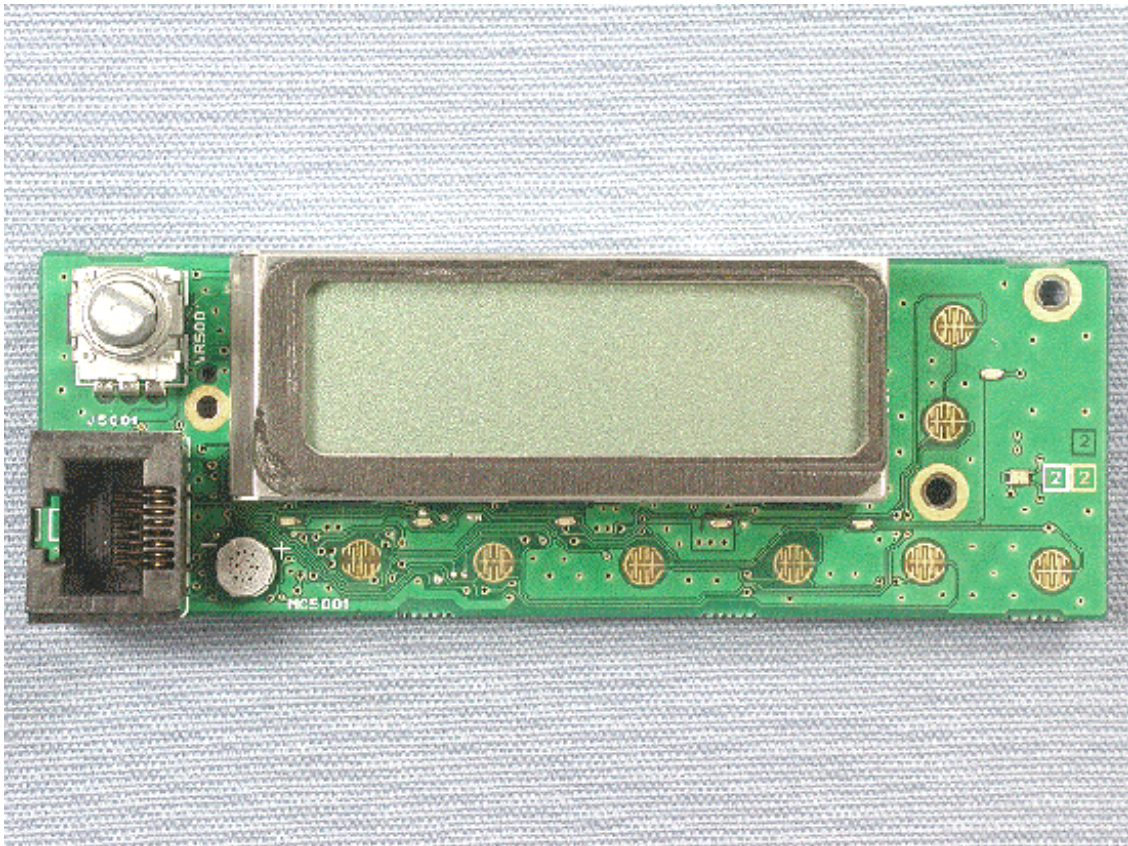
Inside of front panel with PWB (FRONT-D-UNIT (for VX-7200))



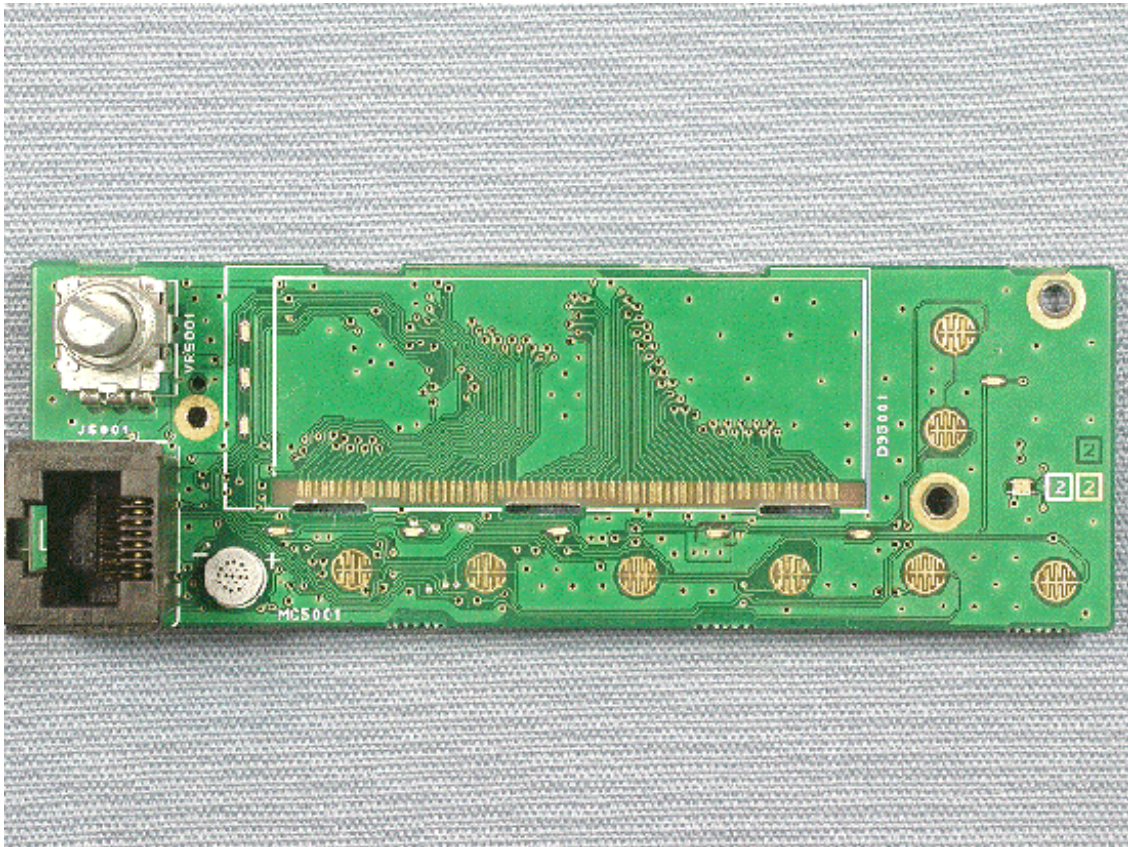
Inside of front panel (for FRONT-D-UNIT (for VX-7200))



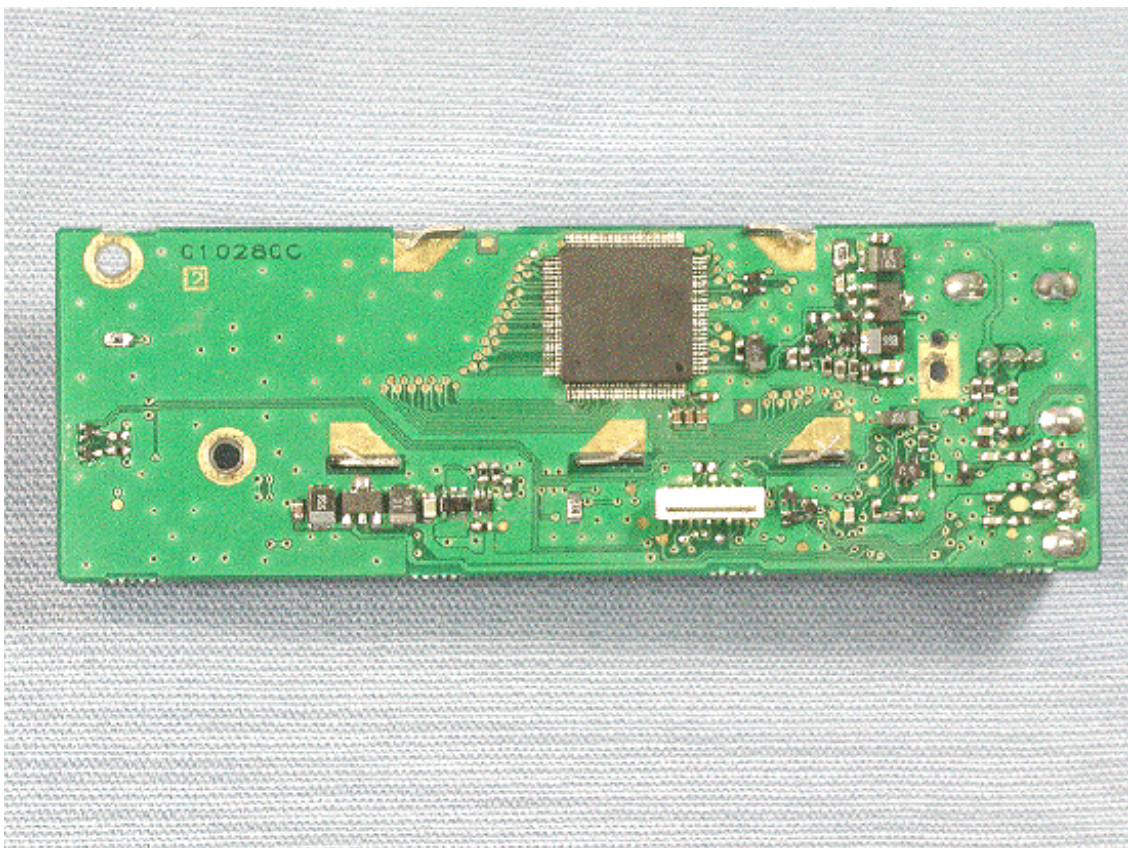
Side-A of FRONT-D-UNIT (for VX-7200) with LCD



Side-A of FRONT-D-UNIT (for VX-7200) without LCD



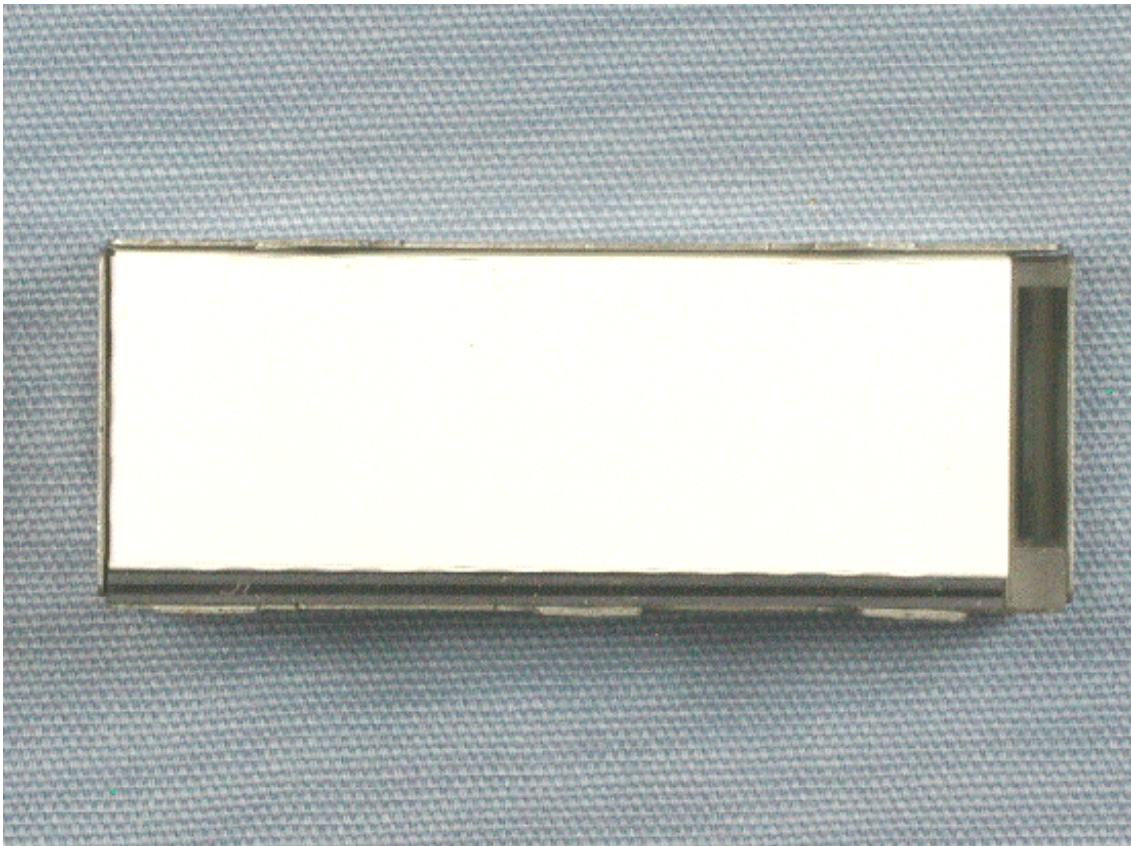
Side-B of FRONT-D-UNIT (for VX-7200)



Front of LCD (for VX-7200)

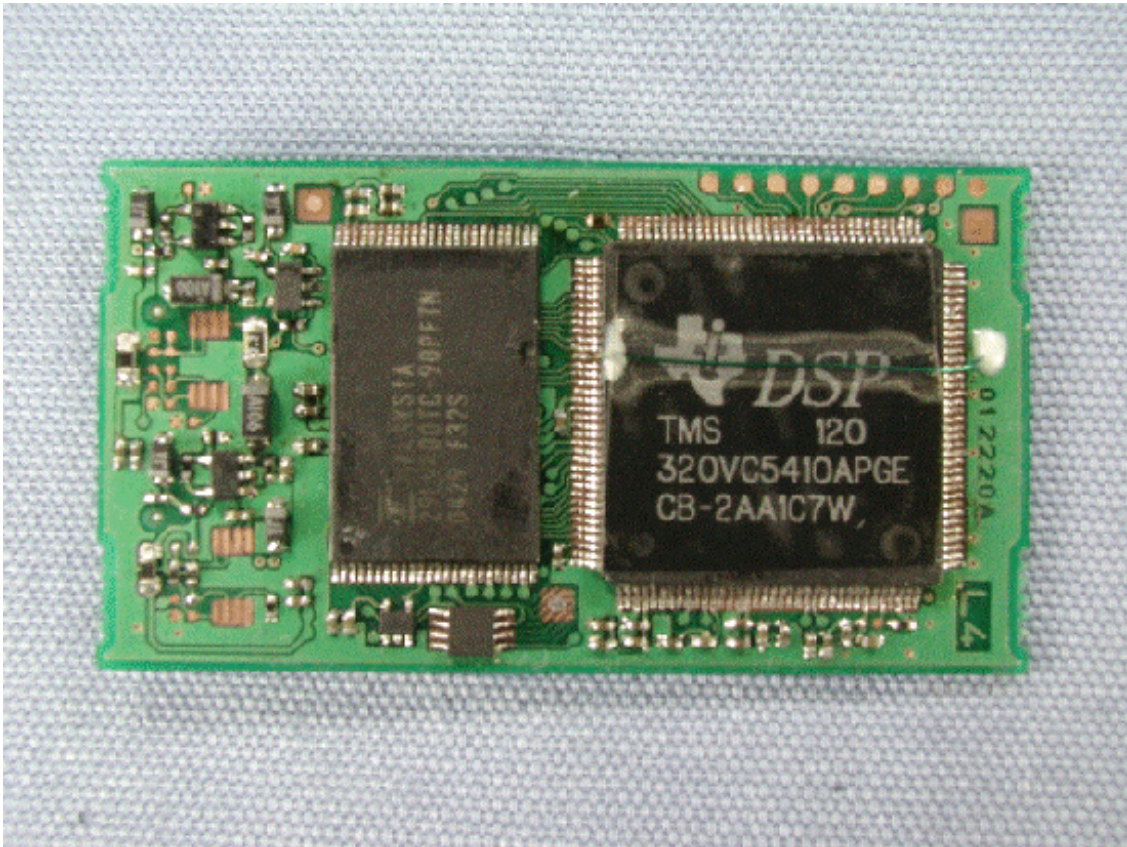


Back of LCD (for VX-7200)

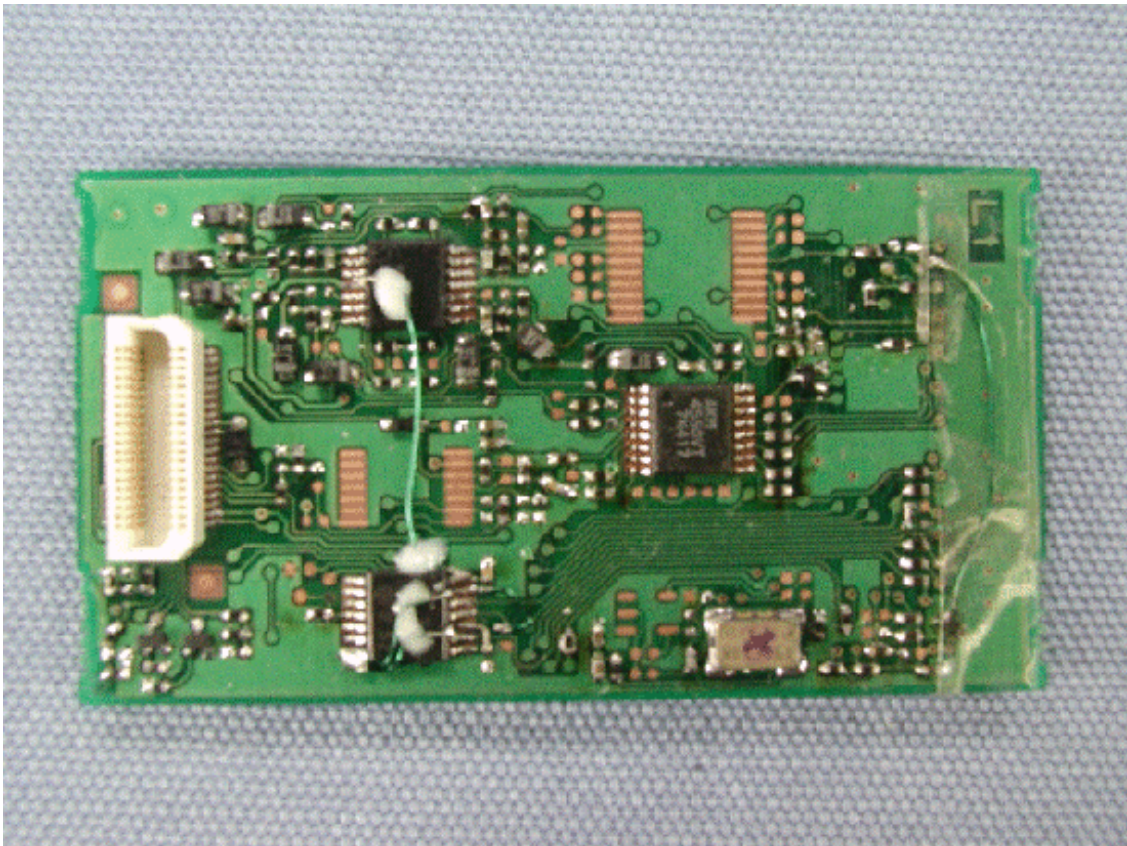




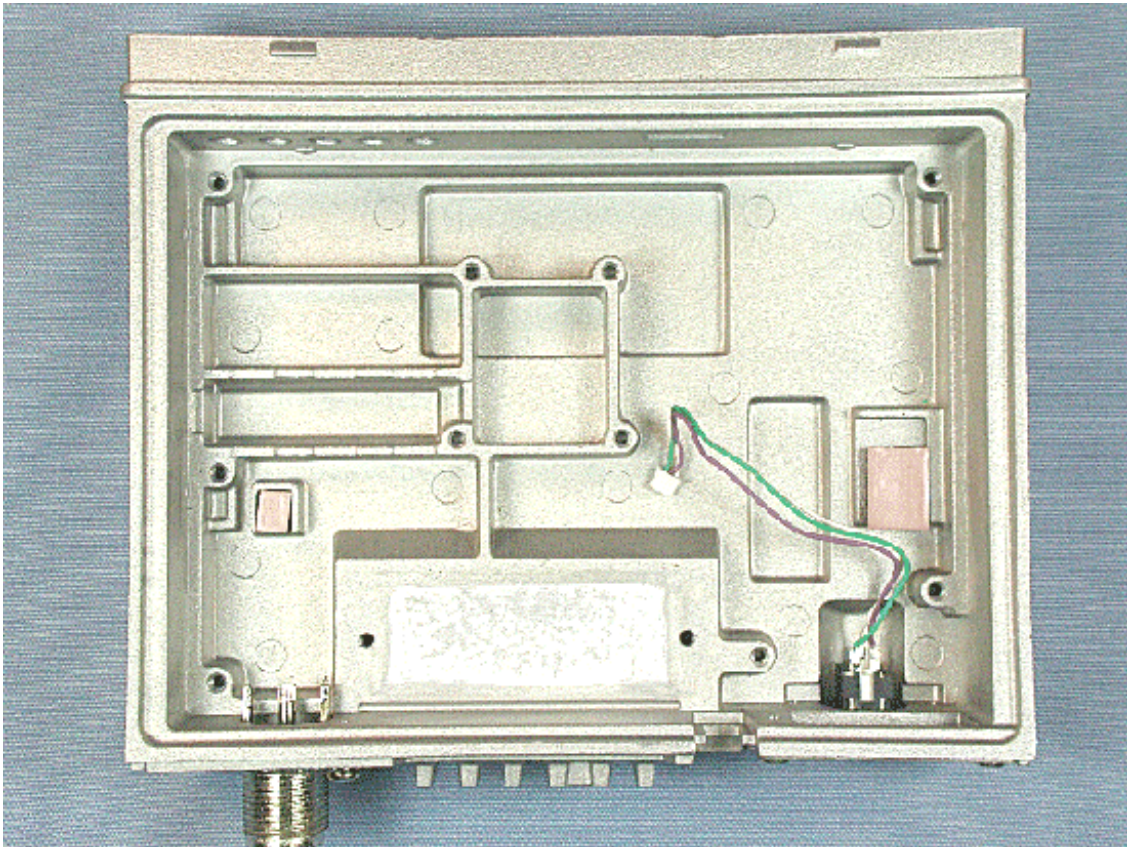
Side-A of MODEM-UNIT



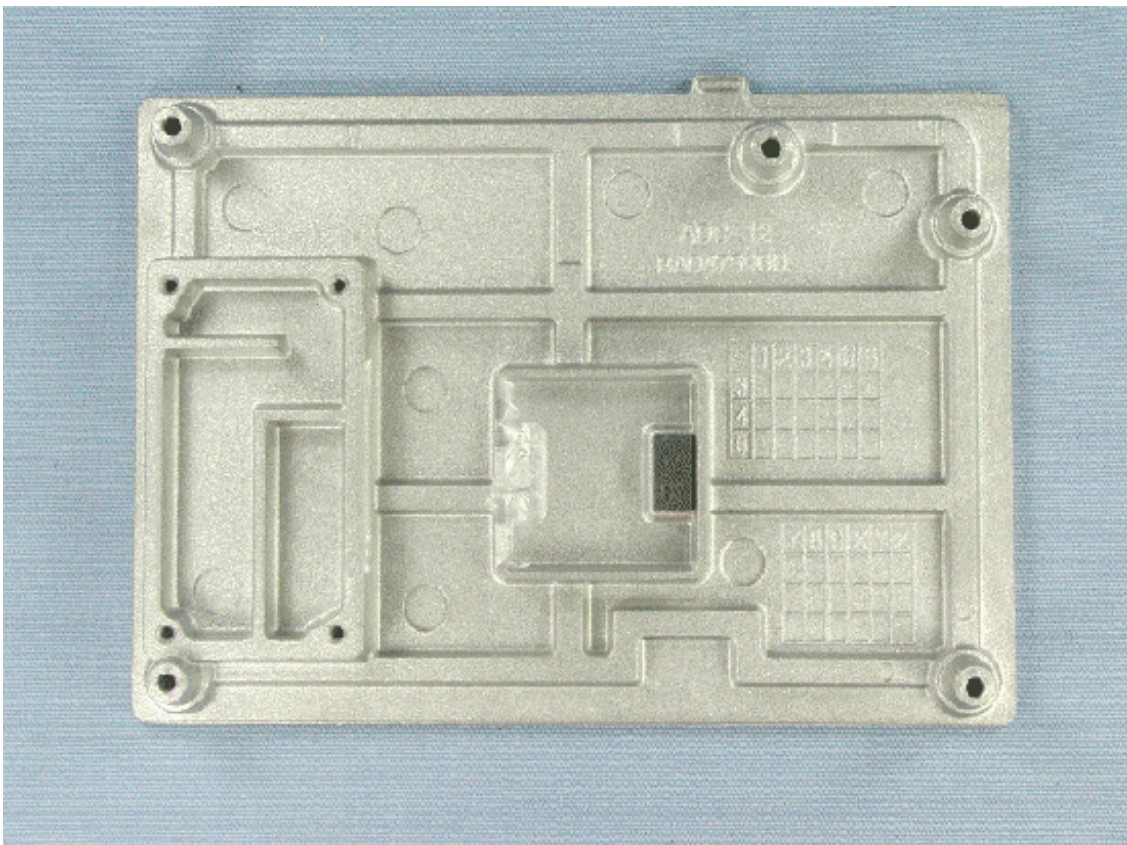
Side-B of MODEM-UNIT



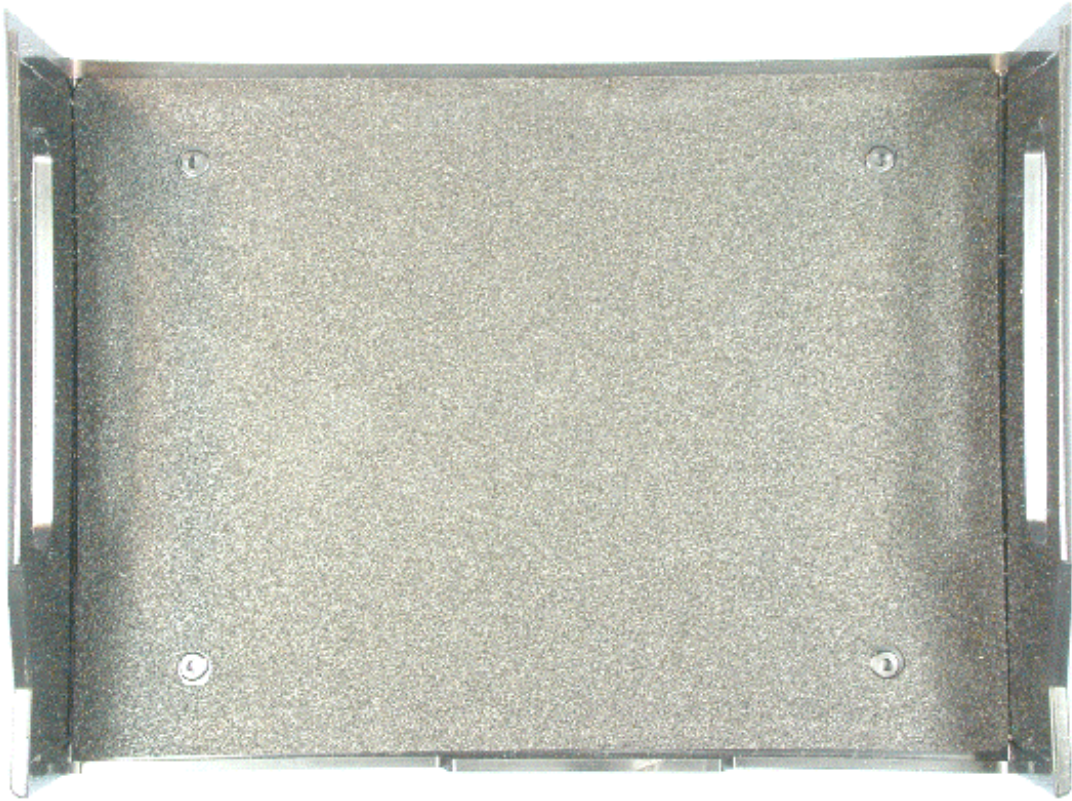
Inside of chassis



Inside of top case



Inside of top cover



Inside of microphone

