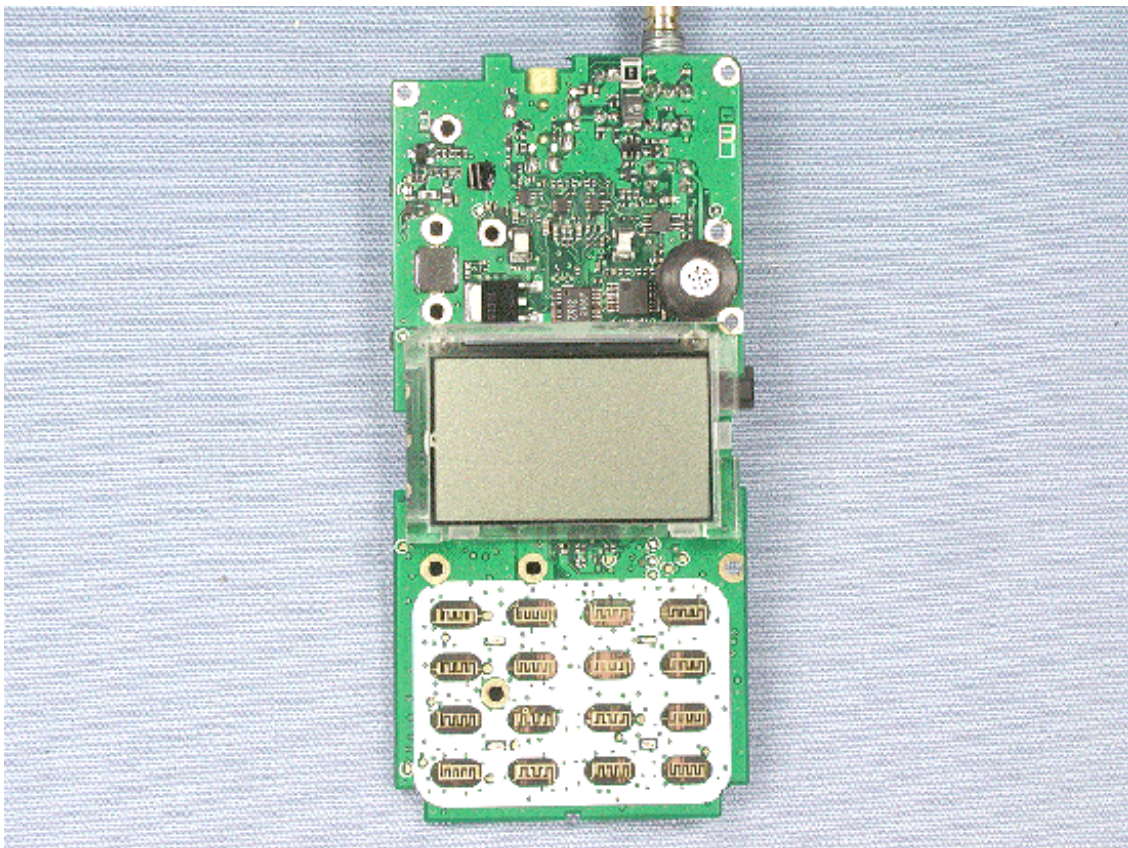


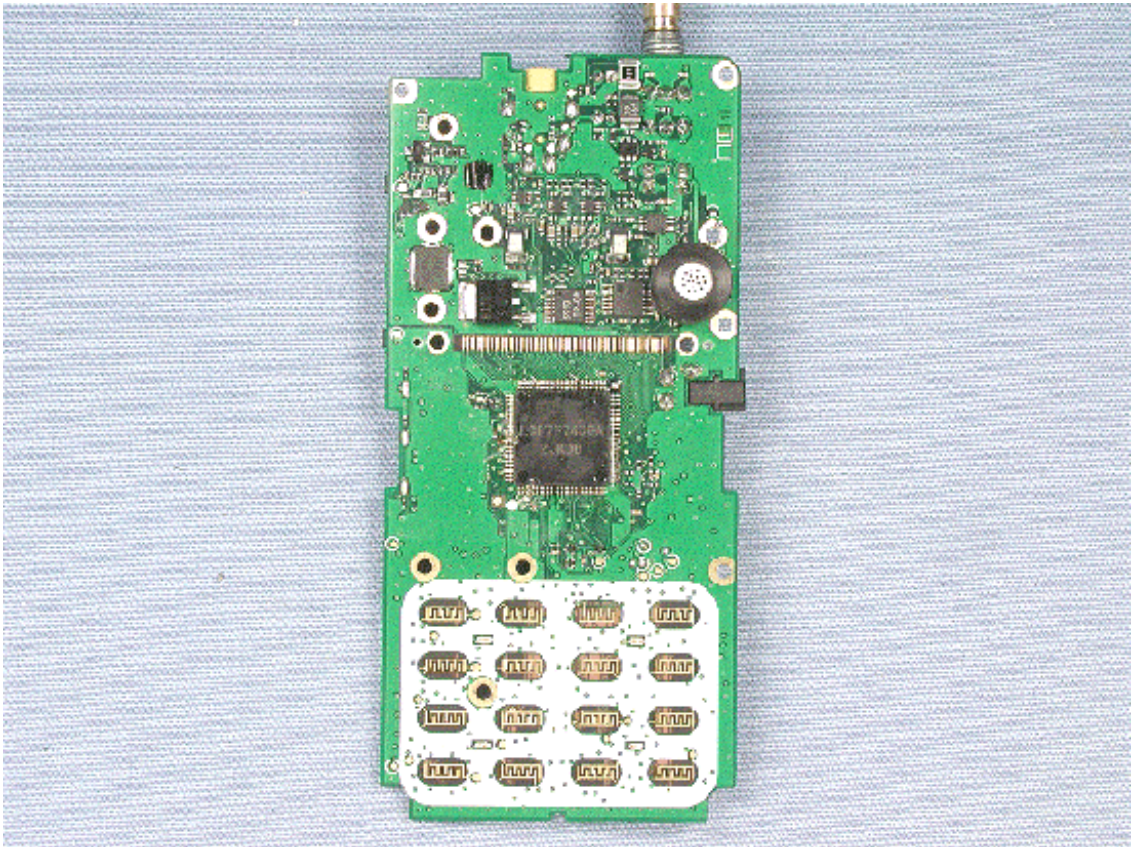
Removed Front Panel



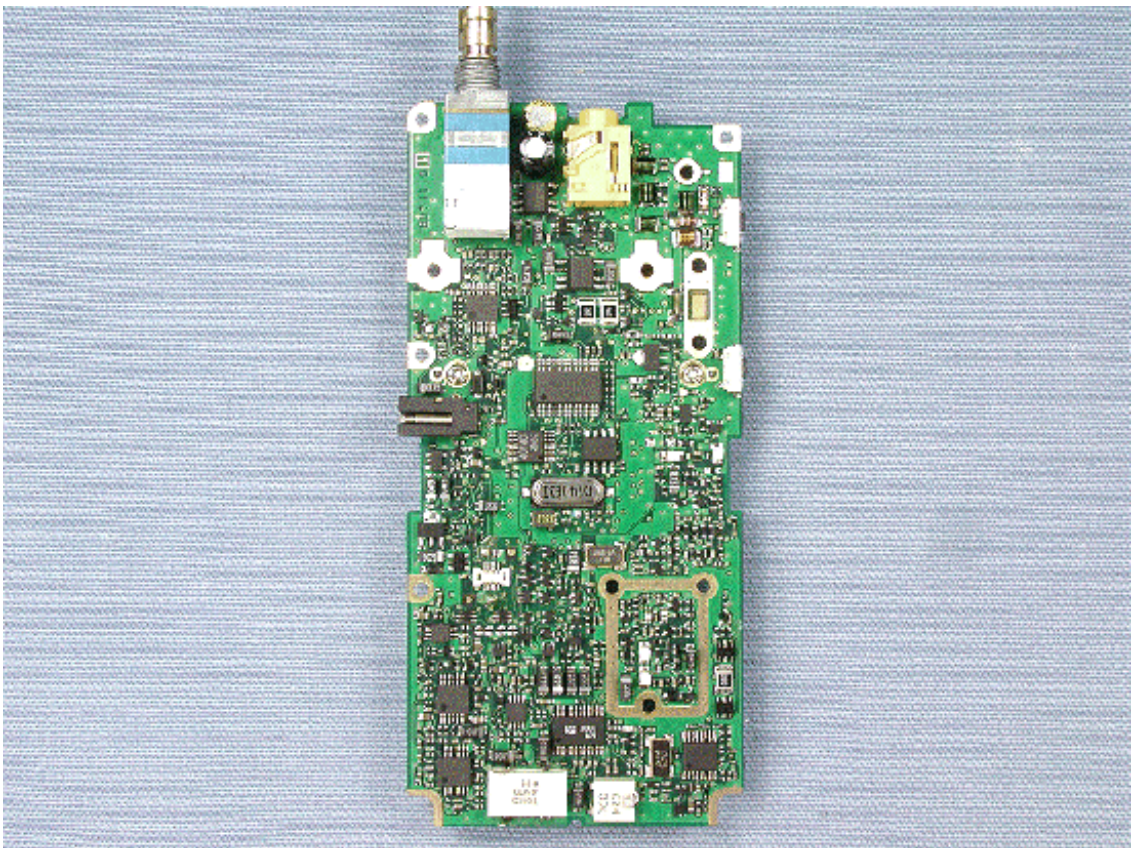
Side-A of MAIN-UNIT with LCD



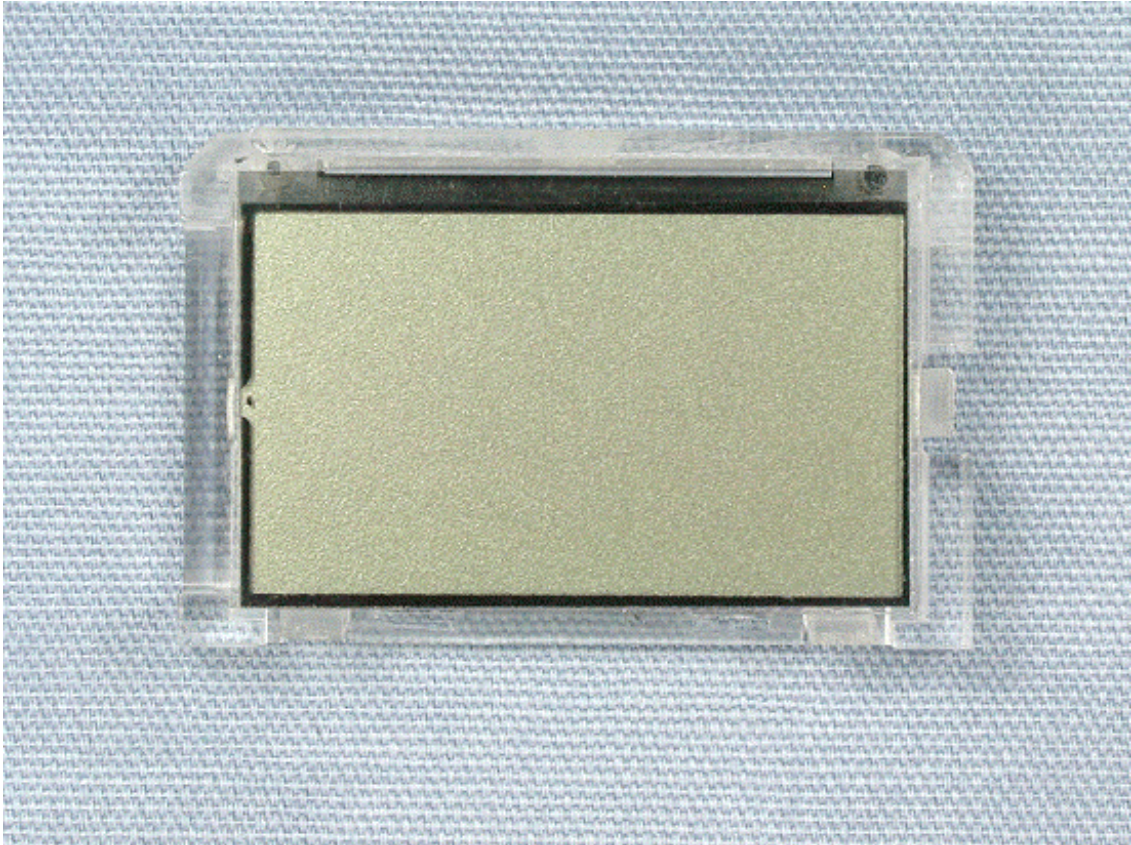
Side-A of MAIN-UNIT without LCD



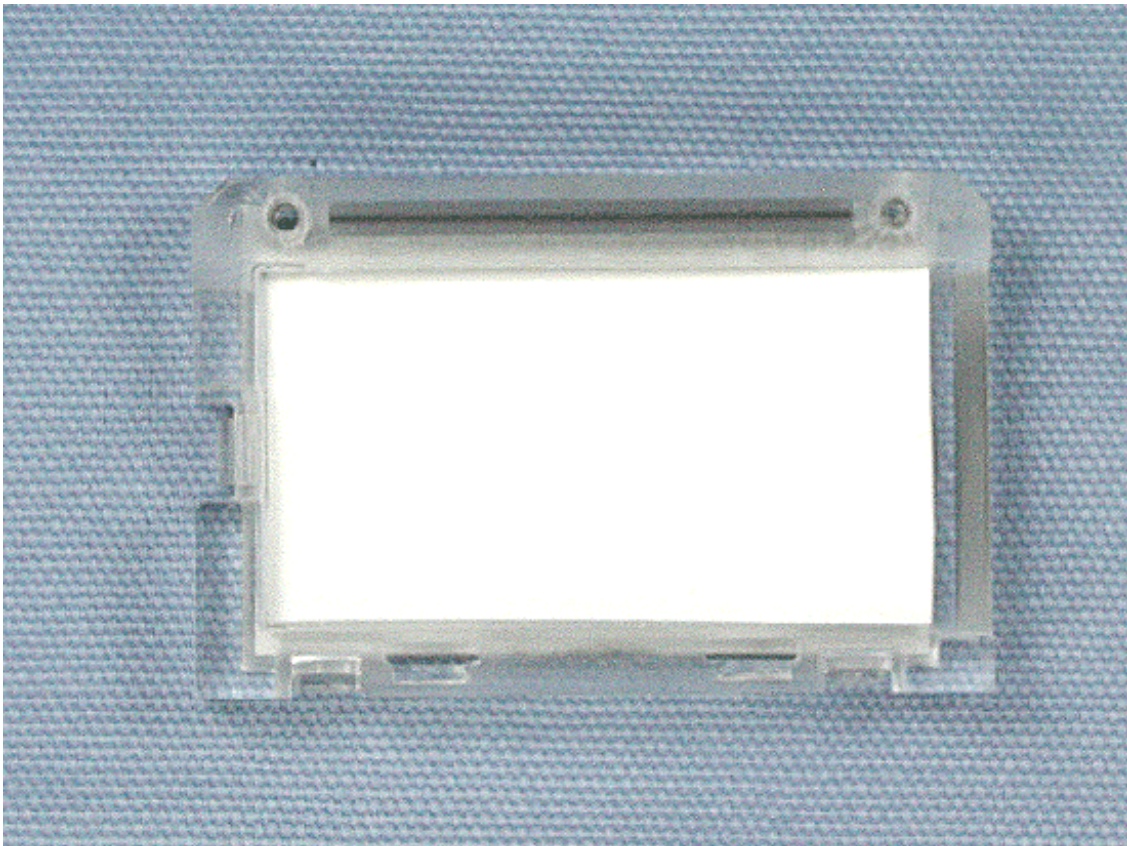
Side-B of MAIN-UNIT



Front of LCD



Back of LCD



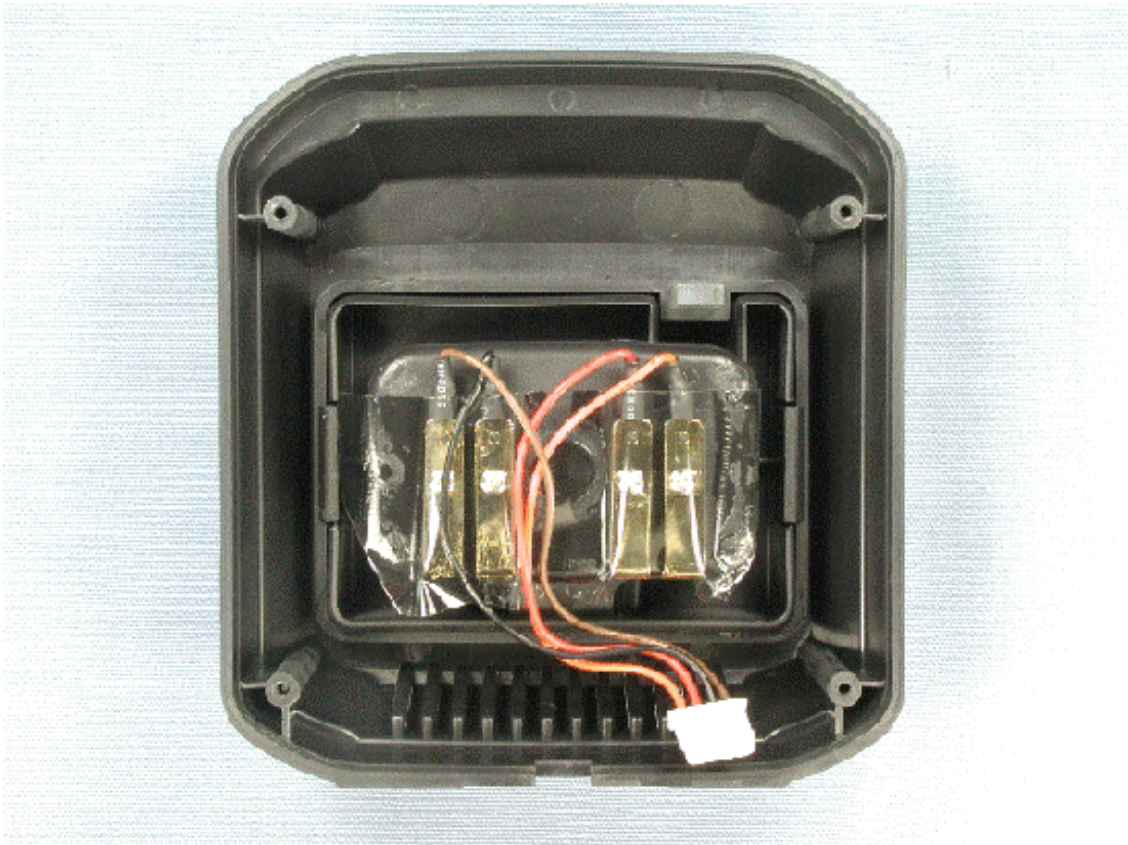
Inside of front panel



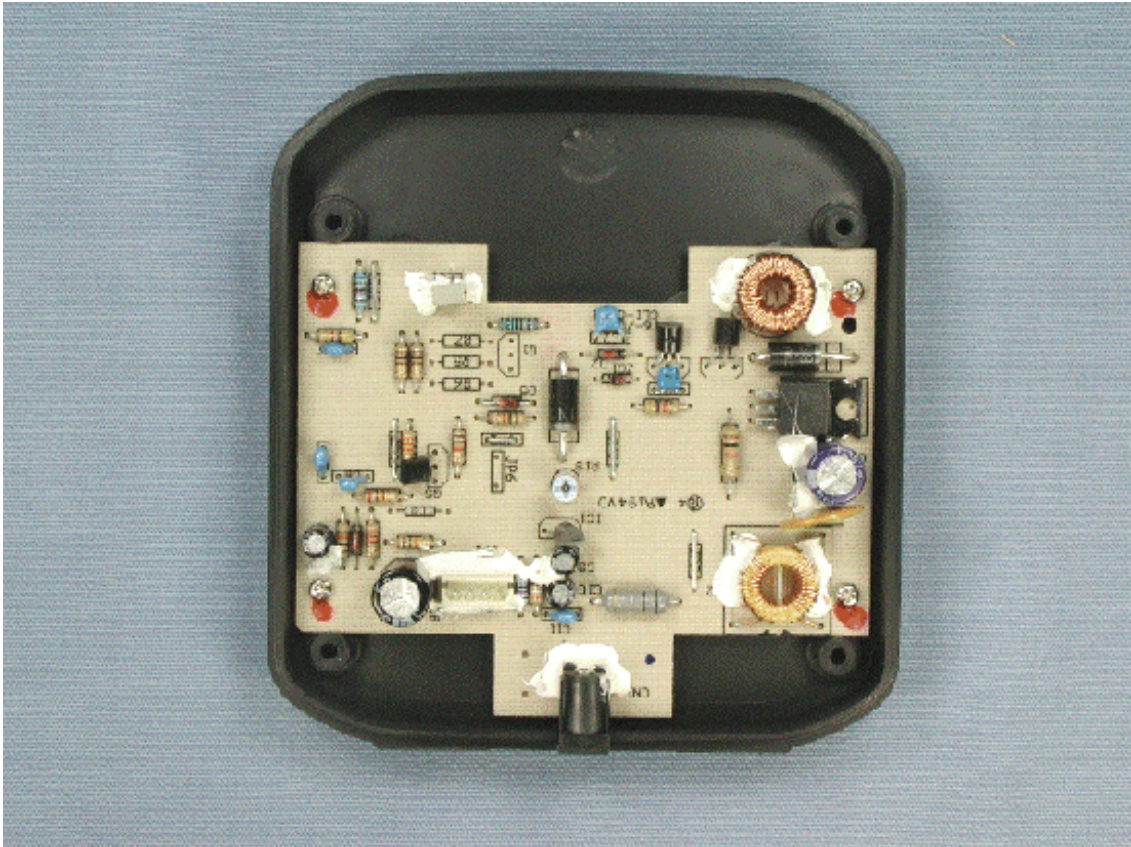
Inside of chassis



Inside top of Battery Charger



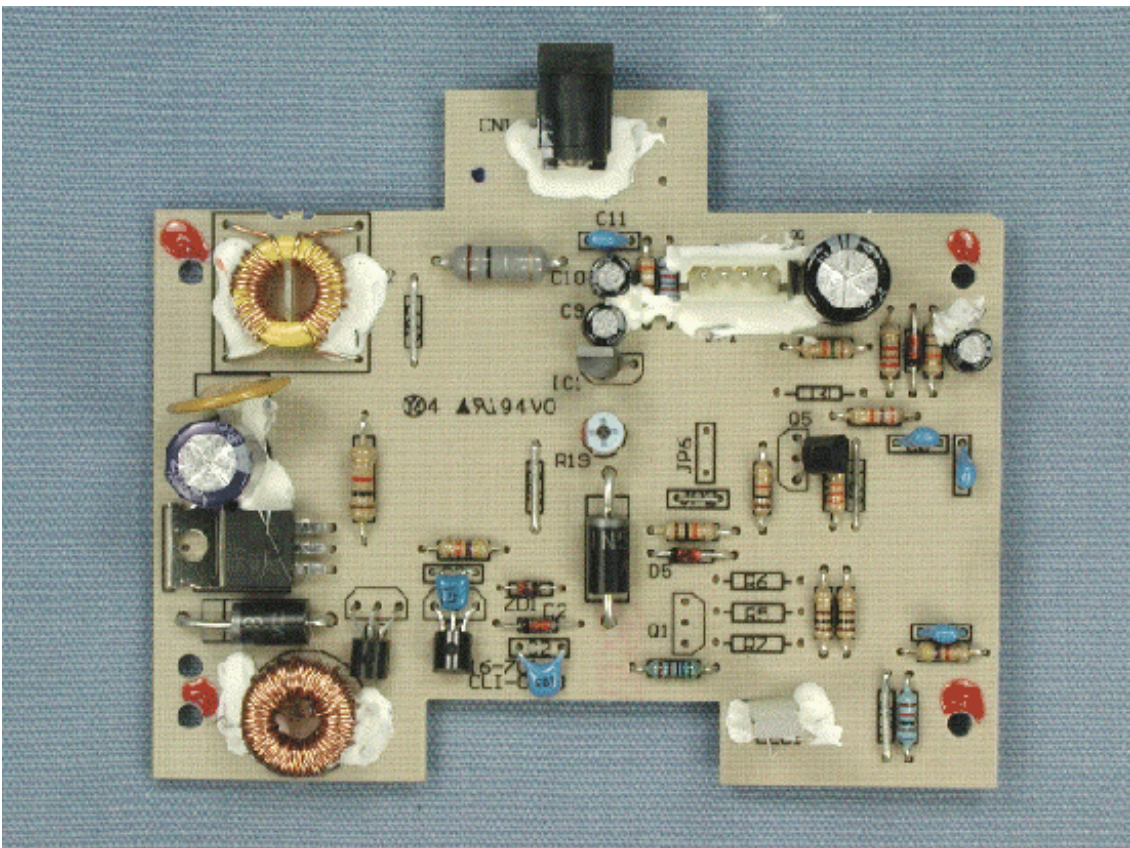
Inside Bottom of Battery Charger with PWB



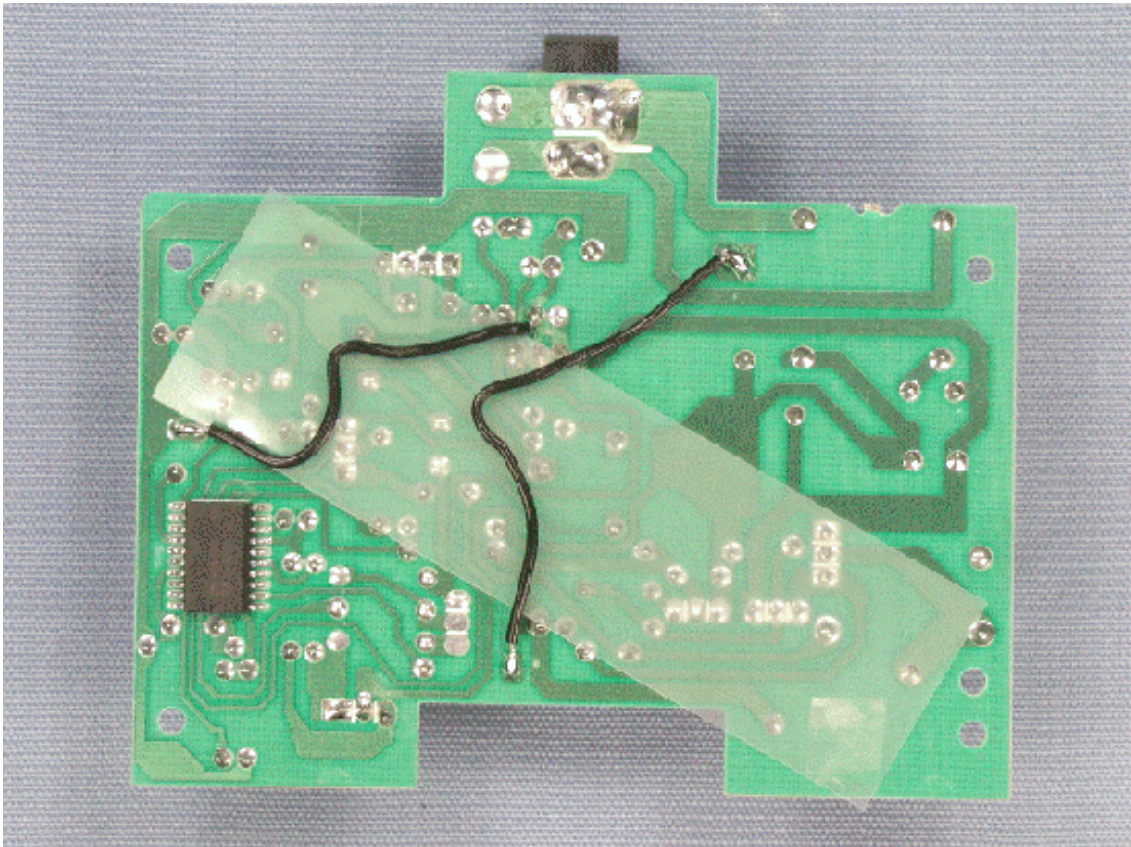
Inside Bottom of Battery Charger without PWB



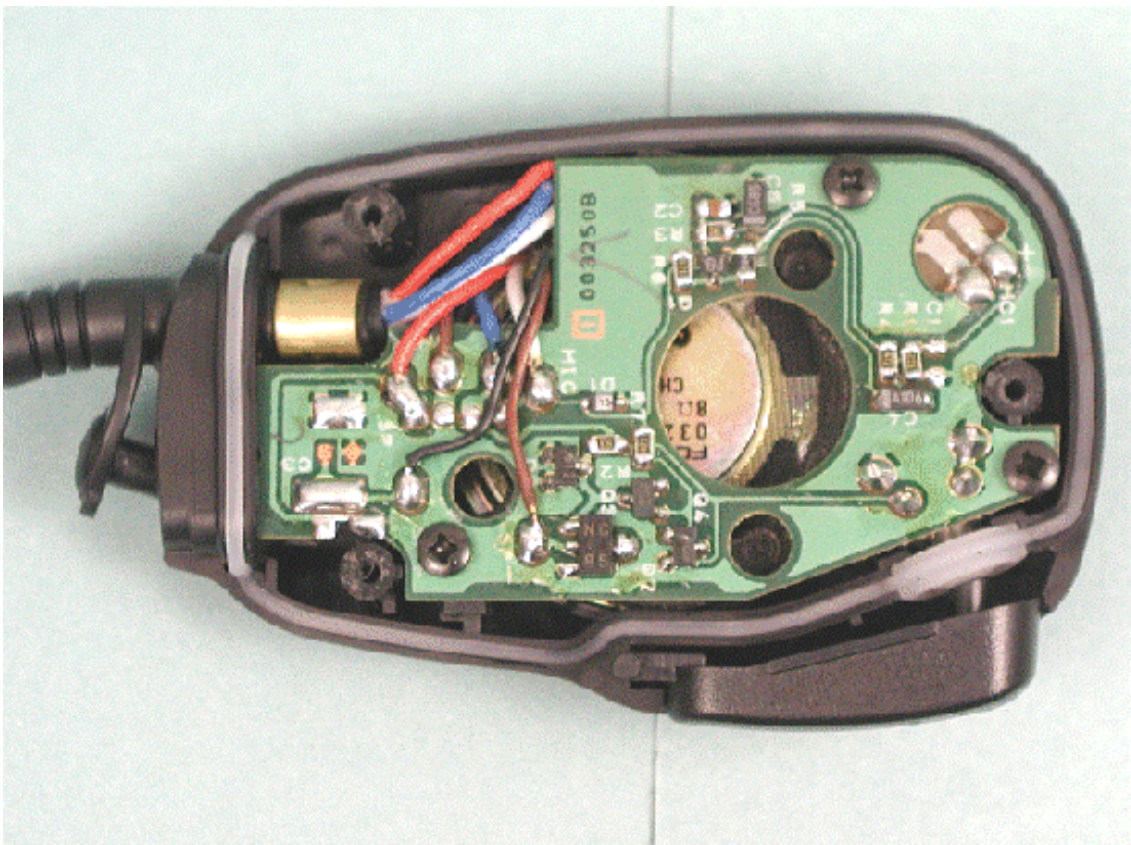
Component Side of Charger PWB



Solder Side of Charger PWB



Inside of microphone (1)



Inside of microphone (2)

