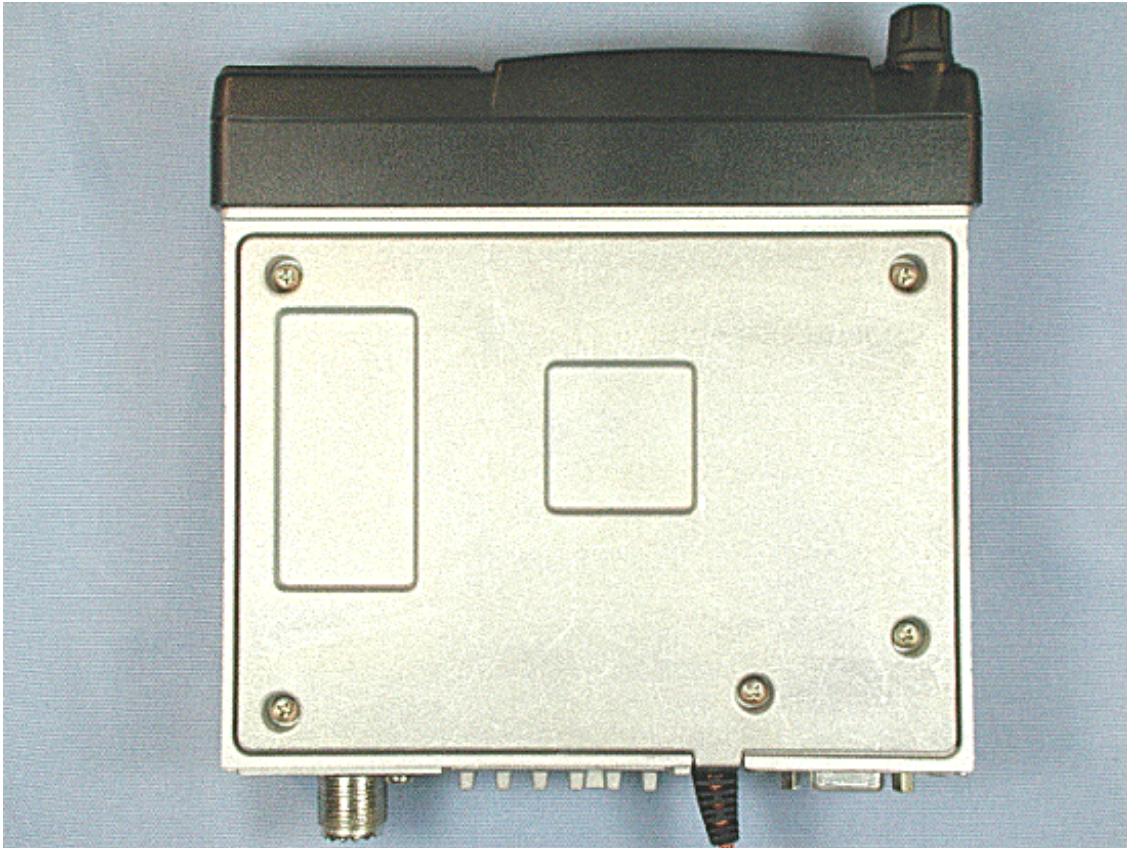
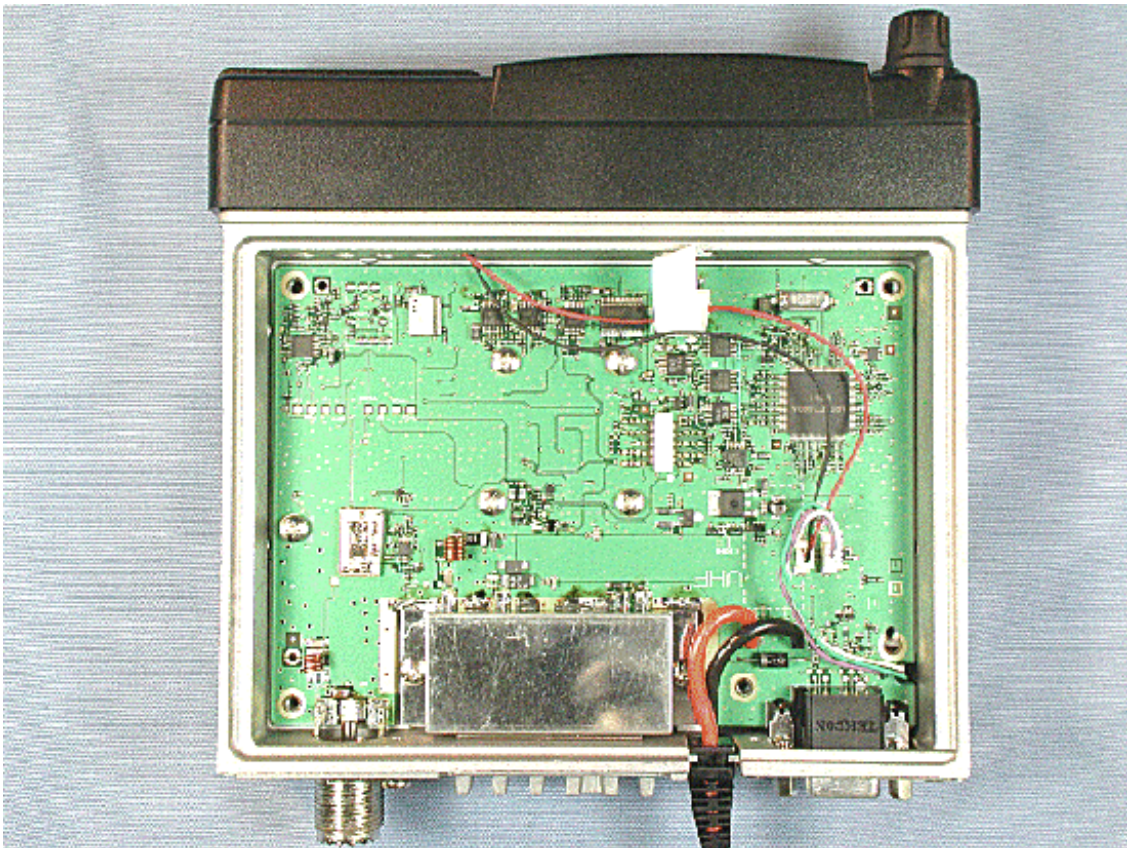


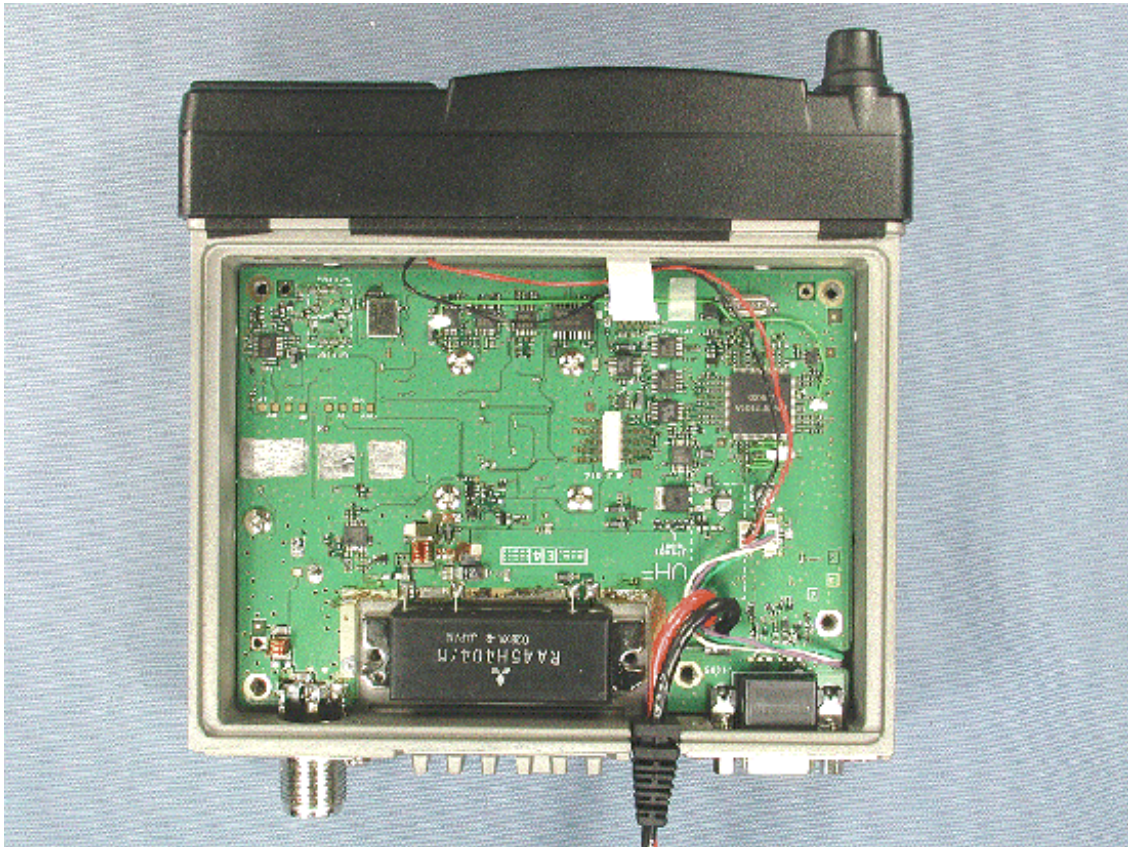
Removed top cover



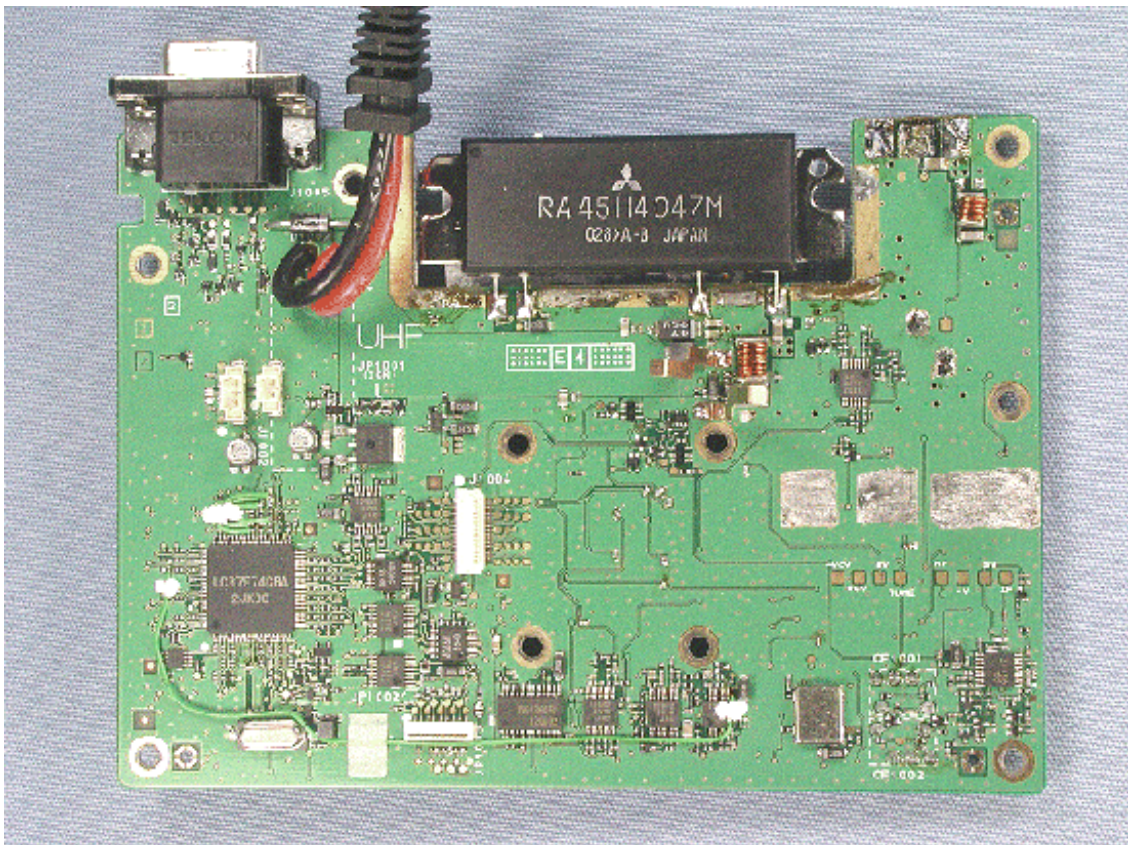
Inside of EUT with shield case



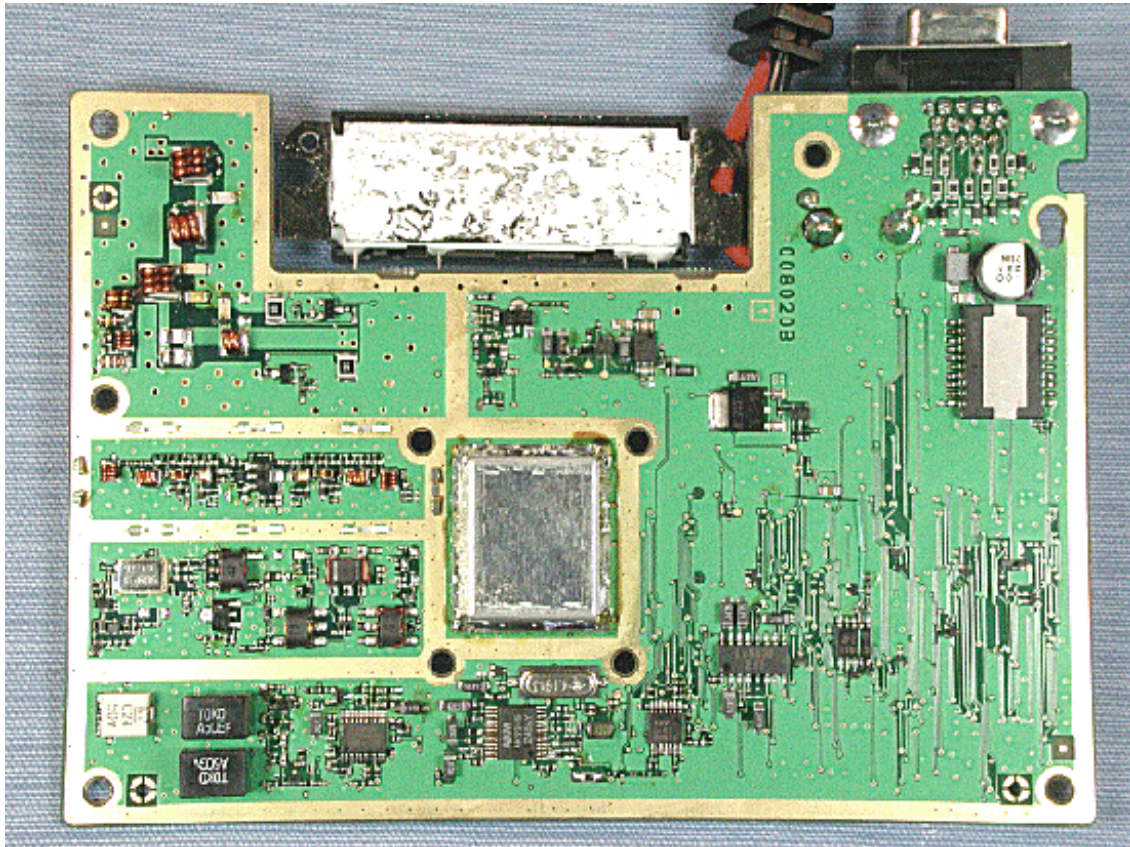
Inside of EUT without shield case



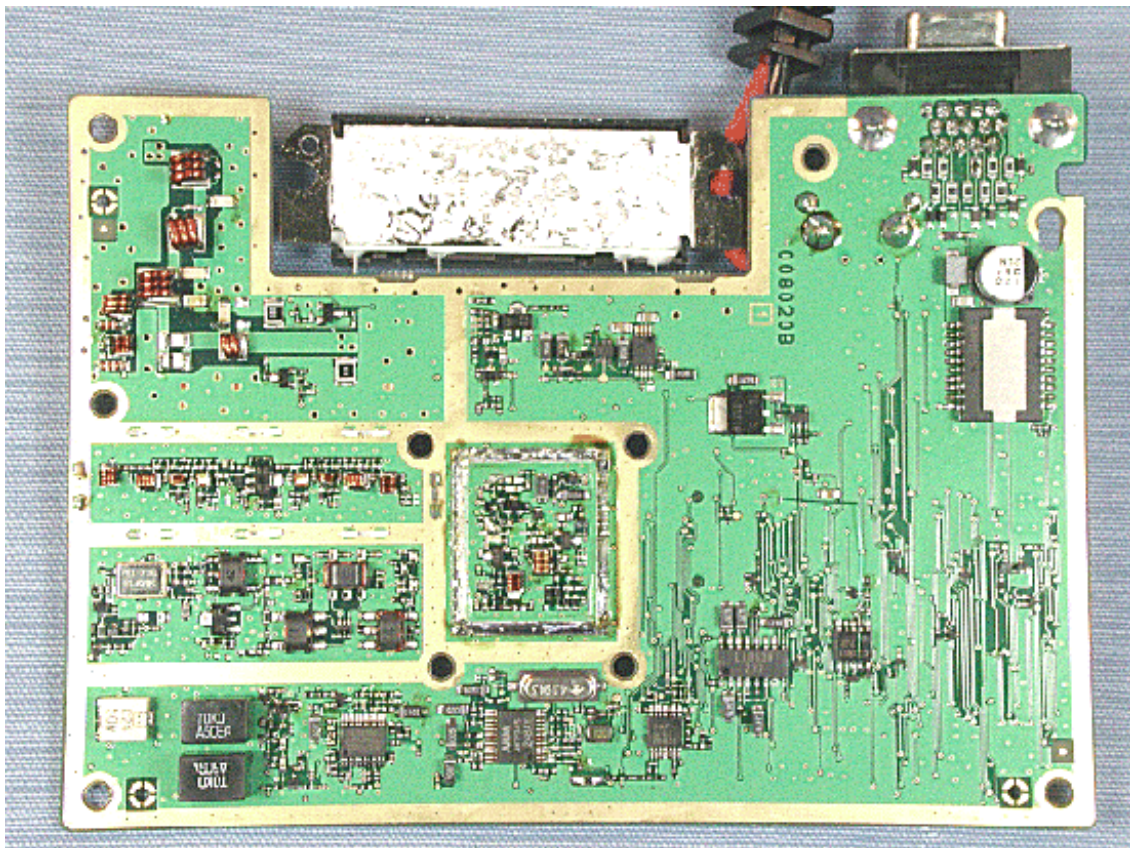
Side-A of RF-UNIT



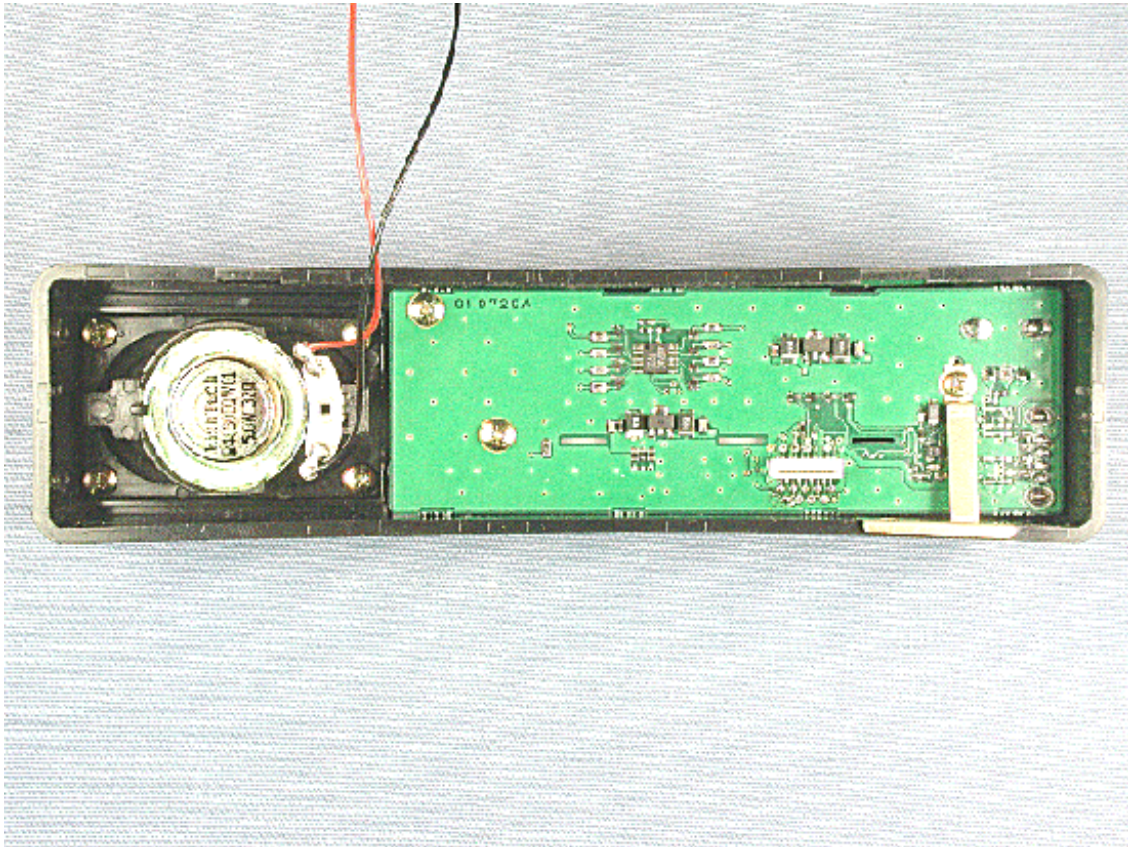
Side-B of RF-UNIT with shield case



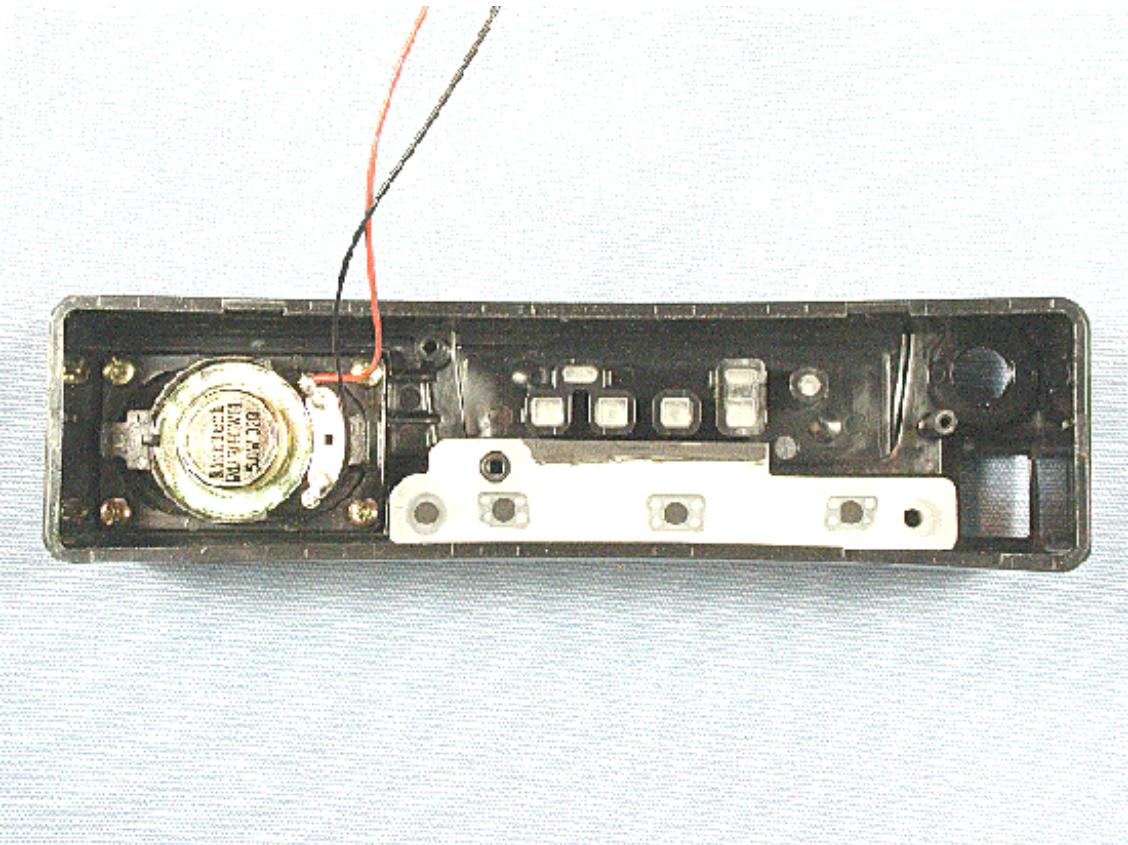
Side-B of RF-UNIT without shield case



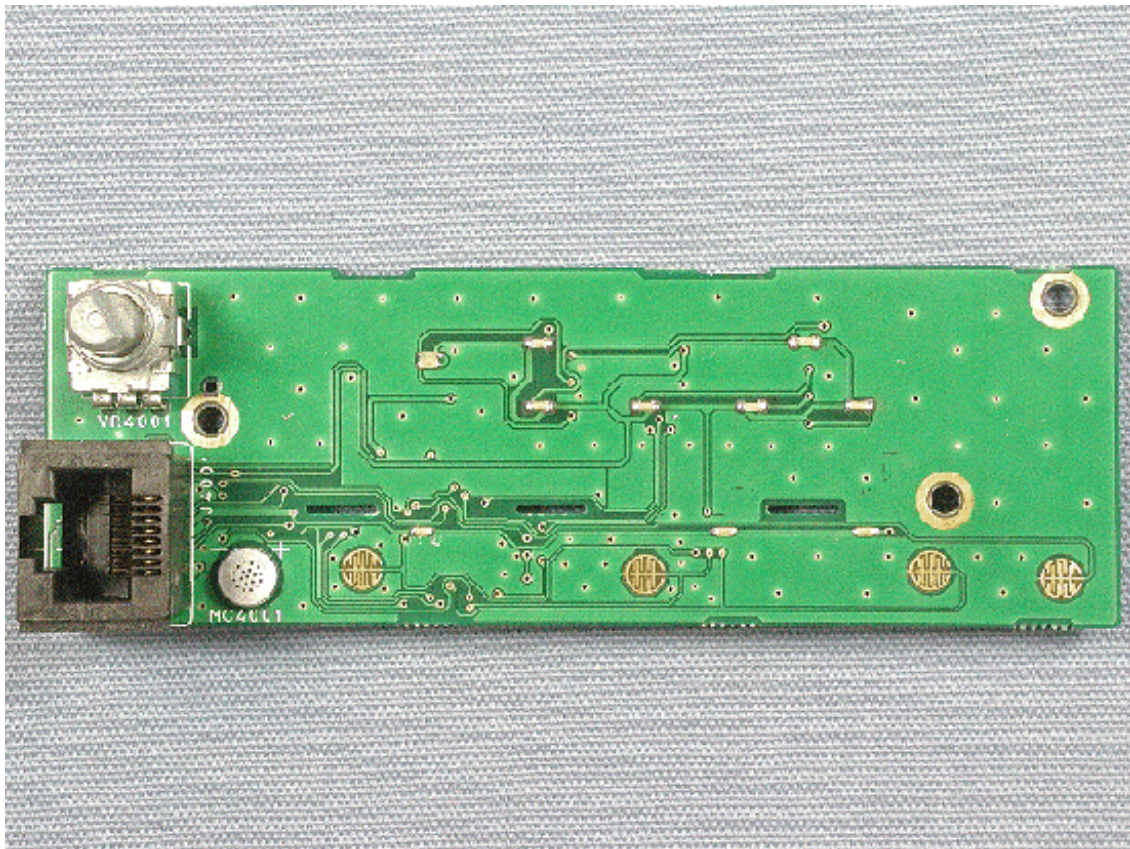
Inside of front panel with PWB (FRONT-C-UNIT (for VX-4107))



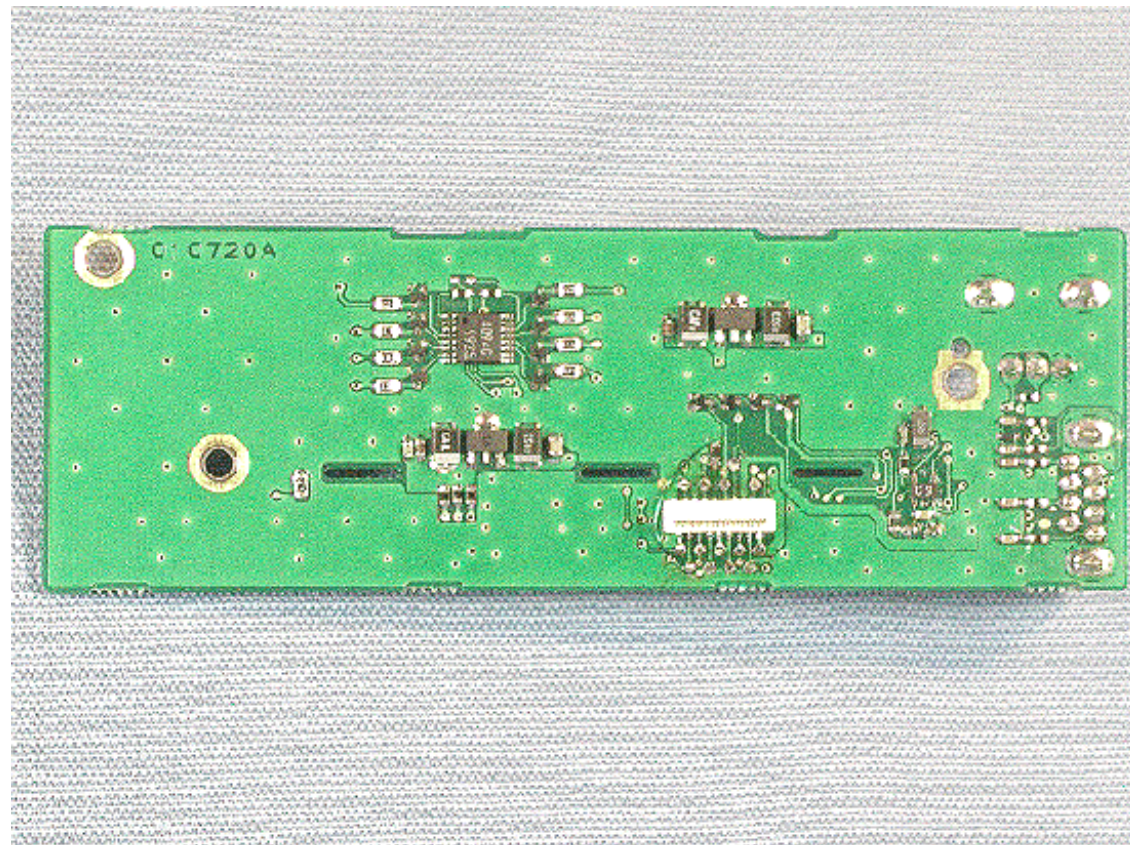
Inside of front panel (for FRONT-C-UNIT (for VX-4107))



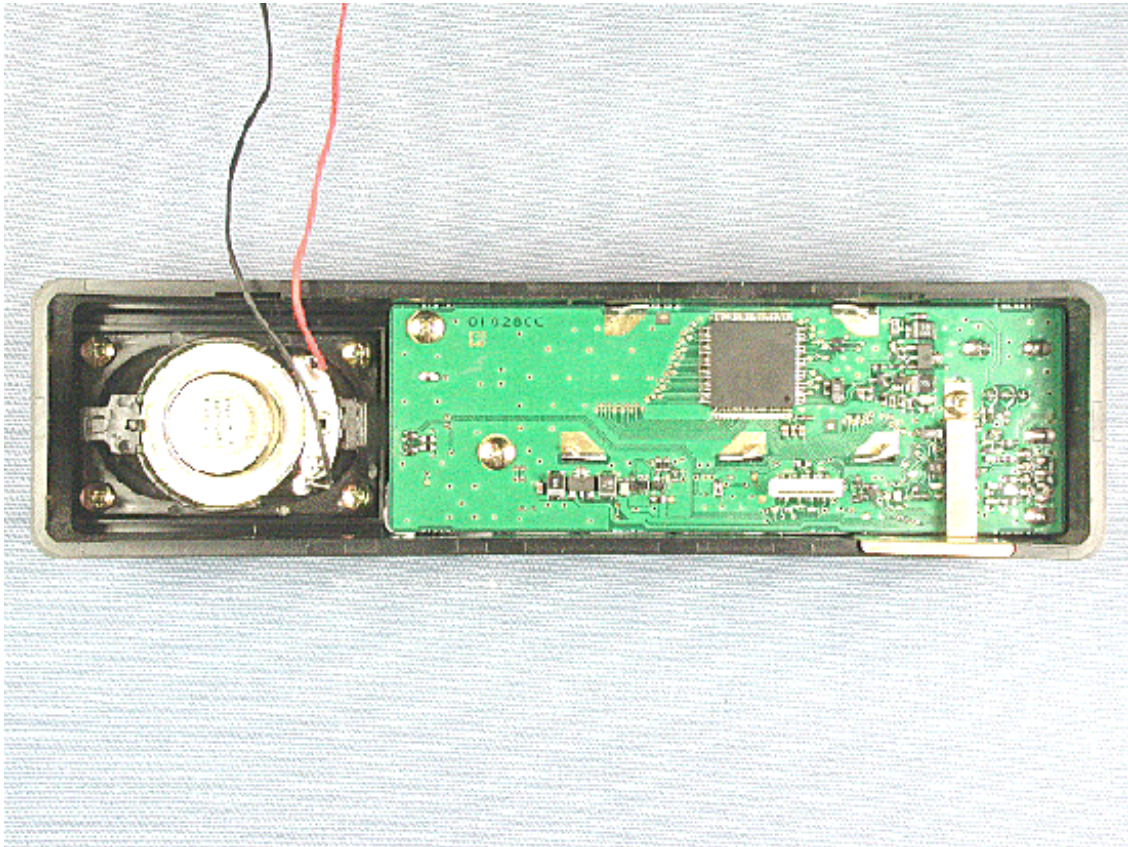
Side-A of FRONT-C-UNIT (for VX-4107)



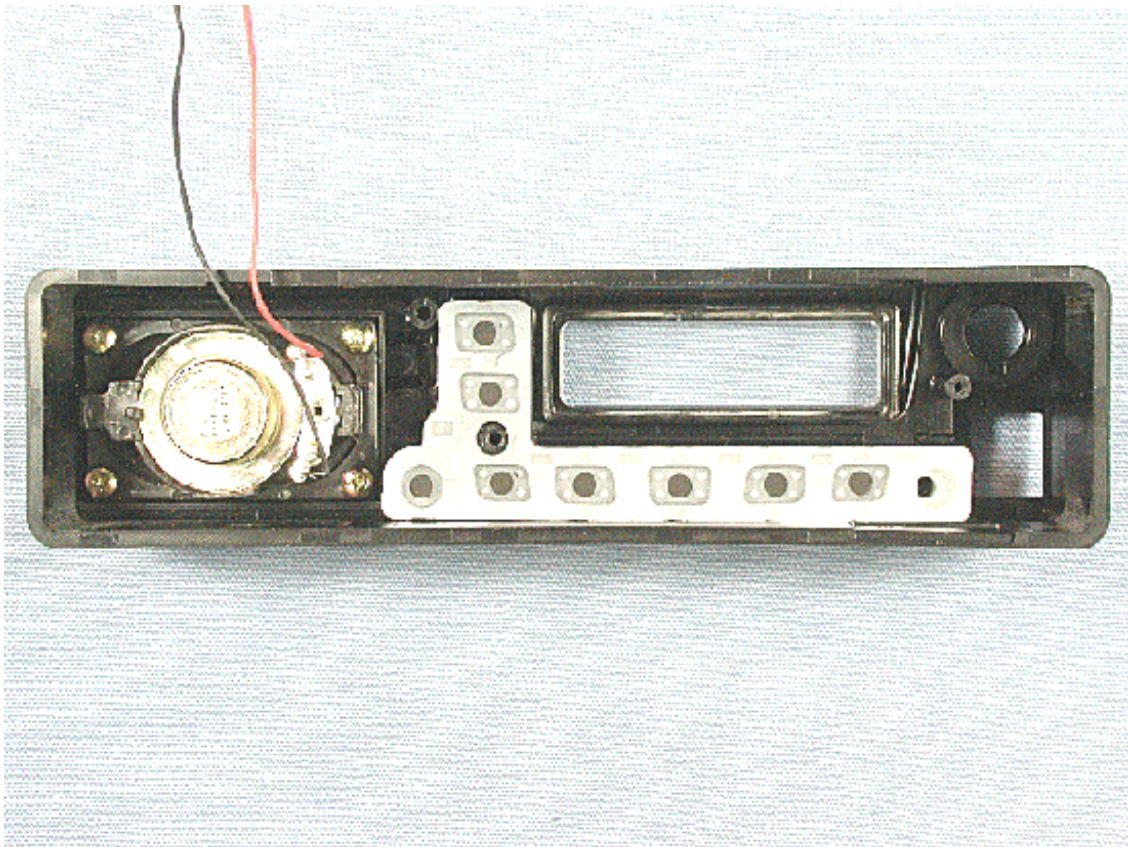
Side-B of FRONT-C-UNIT (for VX-4107)



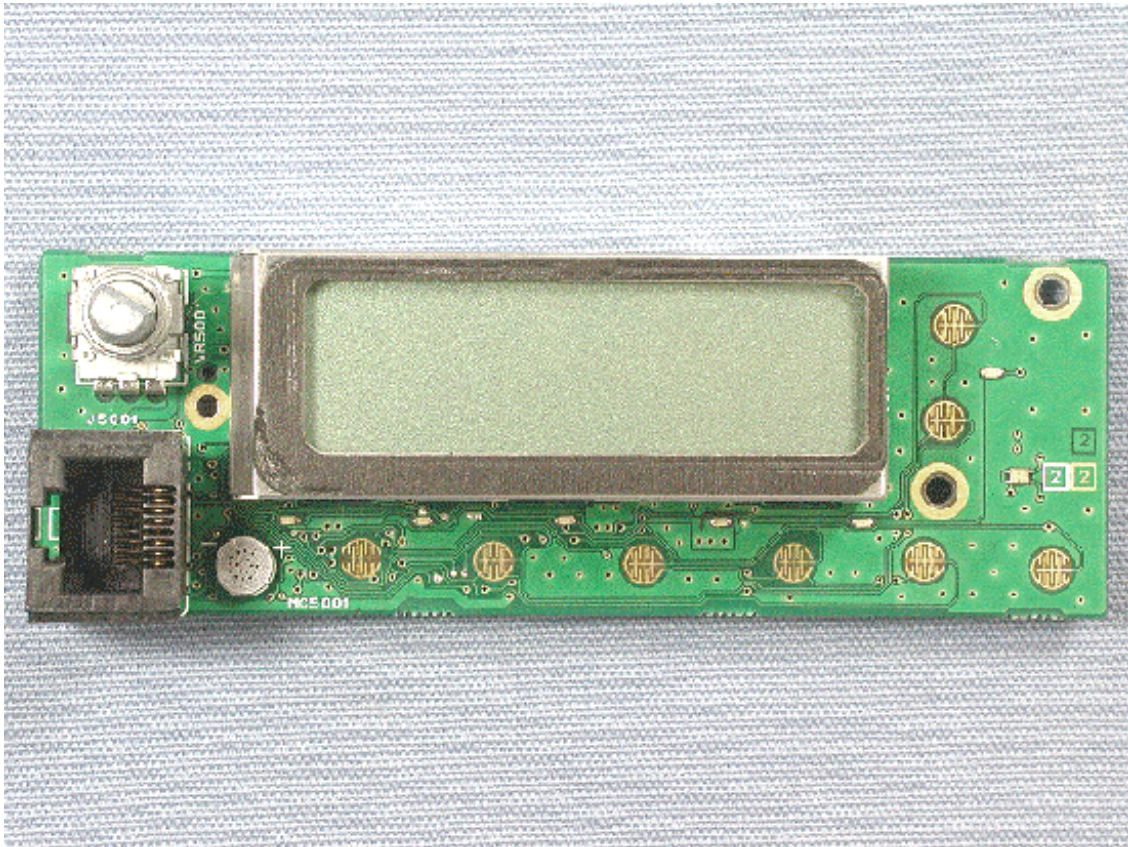
Inside of front panel with PWB (FRONT-D-UNIT (for VX-4207))



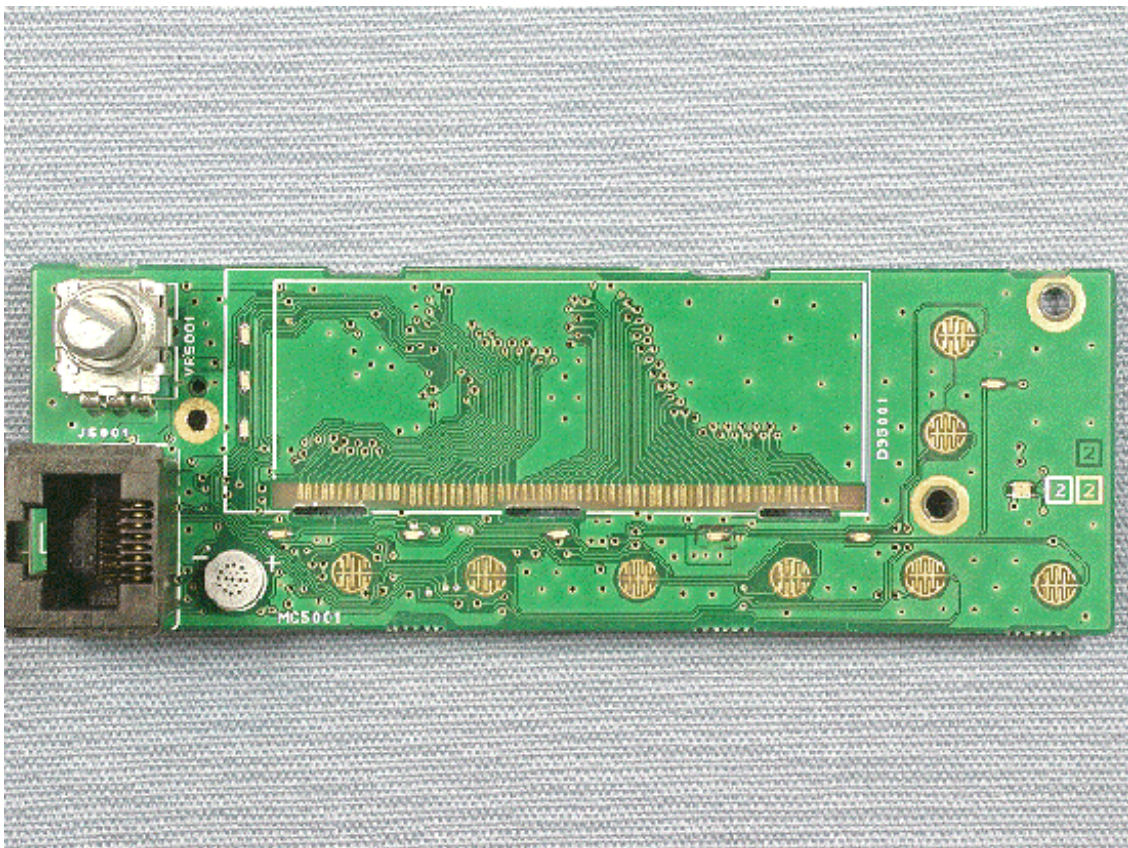
Inside of front panel (for FRONT-D-UNIT (for VX-4207))



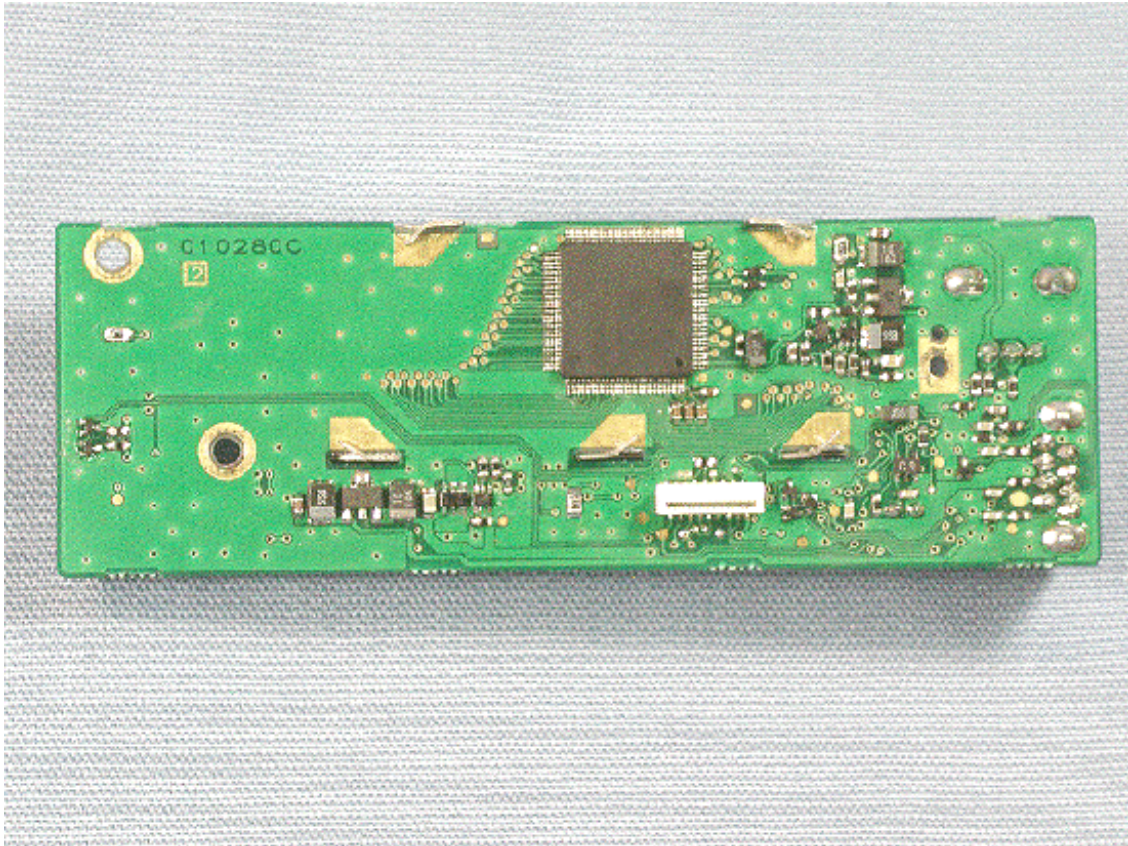
Side-A of FRONT-D-UNIT (for VX-4207) with LCD



Side-A of FRONT-D-UNIT (for VX-4207) without LCD



Side-B of FRONT-D-UNIT (for VX-4207)

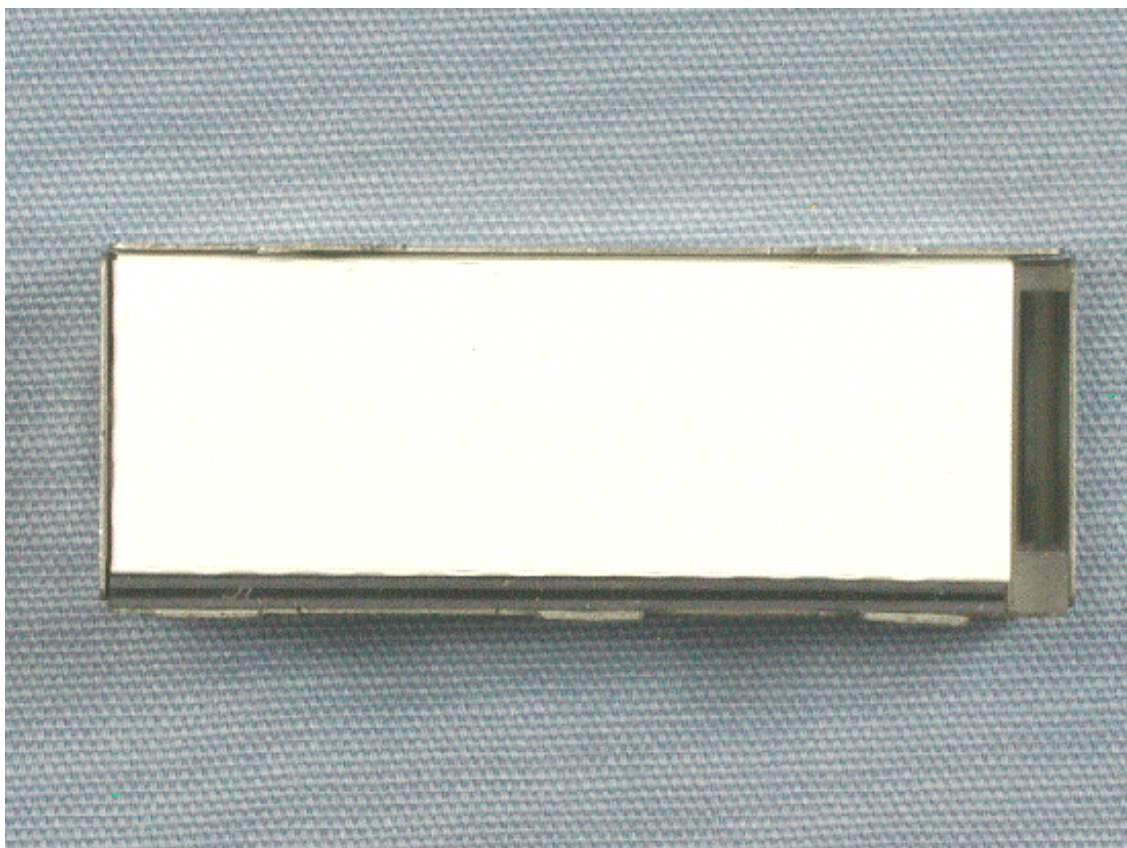


Front of LCD (for VX-4207)

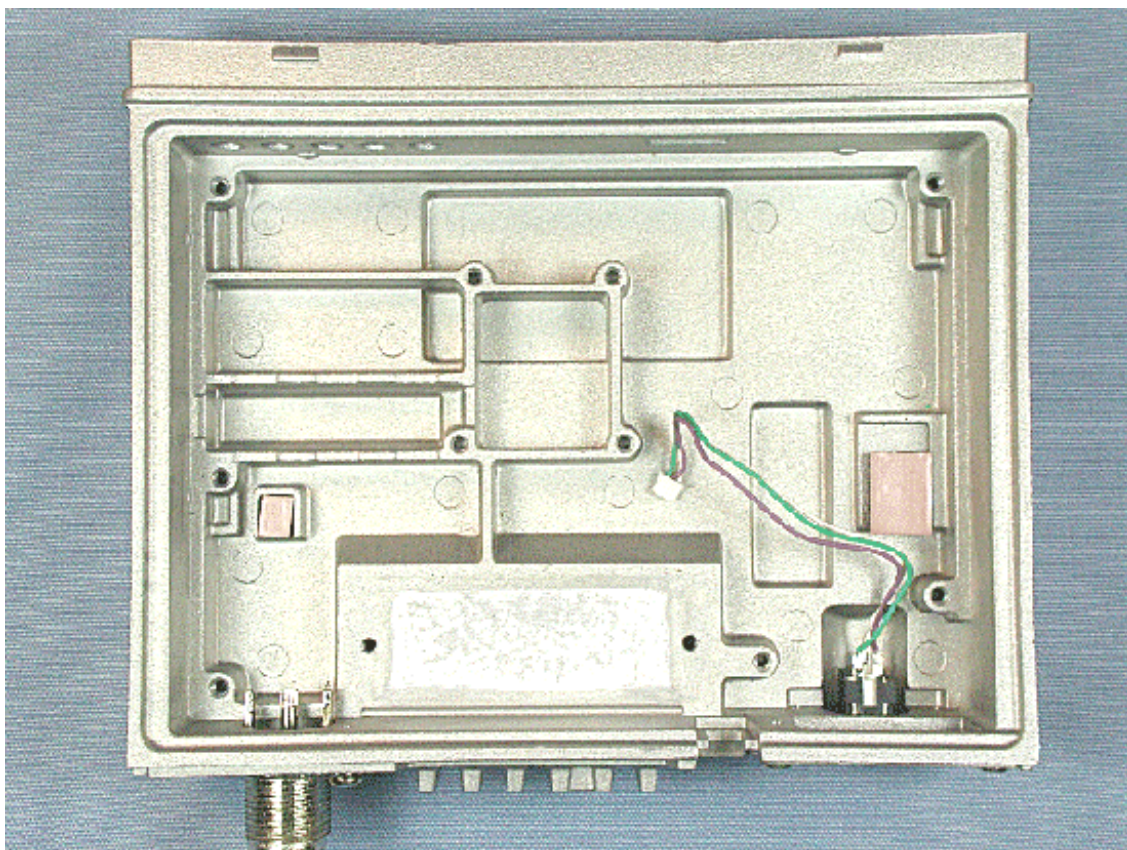




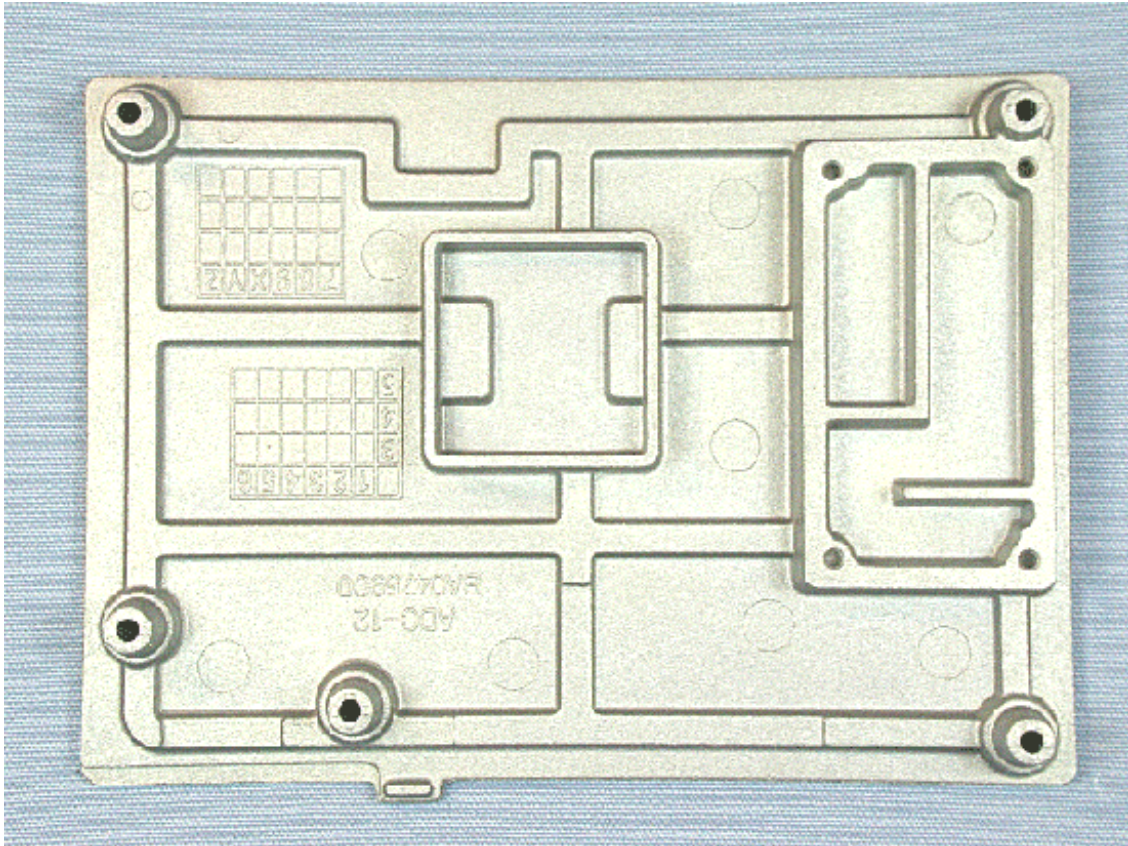
Back of LCD (for VX-4207)



Inside of chassis



Inside of top case



Inside of top cover



Inside of microphone

