

VS NetCom Devices

Quick Installation Guide

Connect your Devices to Ethernet or Internet

Netcom Servers allow you to connect existing devices with serial interface to Ethernet and Internet.

Netcom Servers are intelligent and flexible gateways between Ethernet and serial ports, which allow to address serial ports over TCP/IP sockets. Additionally, the Netcom Drivers make a remote serial port to act as a virtual COM port. In this mode, your original application can control remotely located devices directly over network.

- Driver for Virtual Com, or Raw TCP Connection
- Easy to Use Installation & Configuration Utility
- Configuration over Webbrowser
- Supports Windows XP, 2000, NT, Linux

1. PACKING LIST

- ✓ VS NetCom Server
- ✓ Power supply adapter, AC 220V to DC 9V 0.5A for NetCom 111, 113 and 211
12V 1 A for NetCom 411 and 413
12V 1 A for NetCom 811 and 813
- ✓ Serial Null Modem adapter for each port
- ✓ CD-ROM with driver and configuration software
- ✓ Quick Installation Guide

Check if all parts are available. And also carefully check if the adapter has the correct voltage (220V AC) and connector for your wall outlets.

2. HARDWARE CONFIGURATION

2.1. POWER SUPPLY

Connect the cable from the adapter to the power jack at the rear side of NetCom. Place the adapter into the wall outlet. The red Power LED on NetCom will light.

2.2. ETHERNET

Connect the RJ45 on the rear side of NetCom to your Switch or Hub. The yellow Link LED on NetCom will light. When data traffic occurs on the network, this LED will blink.

If you have a 100Mbit network the green Speed LED on NetCom will light. If you have a 10Mbit network, the Speed LED remains dark.

2.3. SERIAL PORT

The serial port of NetCom allows for different operations modes, these are defined by Dip switches. The factory setting is RS232 (like COM1). To change this operation mode, please consult the table printed on the NetCom (top side), or the User Manual on the CD-ROM.

3. NETWORK CONFIGURATION

There are two basic configuration modes: DHCP and Non-DHCP. Before you start, contact your Network Administrator. He must be informed about the new device in the network, he has to choose parameters. You need them for driver installation.

4. DRIVER INSTALLATION WIZARD

The driver setup is supervised by the Installation Wizard (IW). The IW will detect the NetCom devices in your network. Later Windows will find the serial ports via Plug & Play.



vsnsetup.exe

Installation Wizard

Insert the CD-ROM into your drive. It will start automatic, presenting some information. You have the choice to start the installation direct from CD. If the CD does not start, or you do not want it to, double-click the Icon of the IW. You'll find it as [D:\Win2000-XP\vsnsetup](#), where "D" is the letter of your CD-ROM drive. Start [D:\WinNT4SP6\vsnstunt](#) in NT.

After copying some files the IW scans your LAN for NetCom devices. Double-click each devices icon to check the network parameters.

4.1. DHCP CONFIGURATION

The search for NetCom usually takes about 30 seconds. For the Quick Installation it is most convenient to use the DHCP option. This option is recommended.

Info	Ports	Firewall	Options
NC113_0030			
Server Name	NC113_0030		
Serial number	00000030	Product type	113
Hardware Rev.	1.0	Firmware Rev.	1.2.0
MAC Address	00:04:D9:80:00:1D		
Network settings			
<input checked="" type="checkbox"/> Use DHCP	Telnet port: telnet		
IP address	192	168	1
Netmask	255	255	255
Broadcast	192	168	255
Default gateway	192	168	1
Name server	192	168	3
Verify			
OK		Abbrechen	Verify

Info Panel of NetCom Server (Network Configuration)

4.2. NON-DHCP CONFIGURATION

If the NetCom is configured for DHCP, and there is no server in the network, NetCom needs up to 2 minutes to start. This is normal, and not an error. You must uncheck "Use DHCP". Then enter values "IP address" to "Name server".

IP address is required, and must be unique for the entire network. The Netmask is also required, and must be the same for all stations in your network. It is recommended to consult your Network Administrator for proper parameters.

Ensure network settings of the NetCom are correct, by double-clicking each devices icon.

Important: The default configuration of NetCom may result in a fixed IP-Address. It will be the same for all connected devices. Then the Wizard can not configure to a certain device. It is best to connect several NetCom one by one, configure them, connect the next and search for that device.

5. DEVICE AND PORT INSTALLATION

In the next phase of installation the Device Manager (DM) installs the driver software for configured NetCom devices. In some systems the DM will ask the user to confirm the installation. This is normal, and not an error message. Click on "Continue". Now Windows will detect all the serial ports on the NetCom servers.

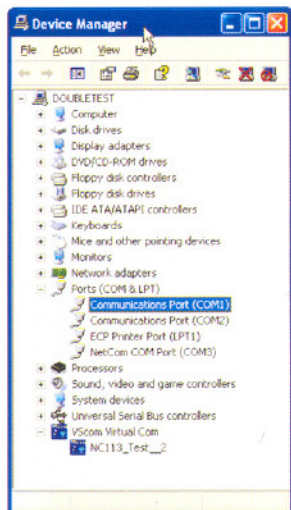


Logo Test

Windows installs drivers for virtual Com ports. Press "Next" and let the system find the best driver software for the device. Finish the installation by pressing "Finish".

6. VERIFY THE INSTALLATION

Once the drivers are installed, the devices are listed in the Device Manager. Here is a sample view.

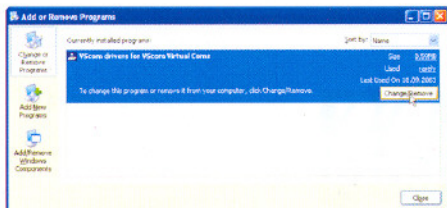


NetCom Ports in Device Manager

The NetCom devices install components in two classes. The serial ports are installed as usual in Ports, while the NetCom devices have a class of their own: "VScom Virtual Com". Properties of the entire class can be viewed by marking the class name and pressing the right mouse button. The Installation Wizard will pop up.

7. UNINSTALLING THE DRIVERS

To uninstall the drivers, open "Start" → "Control Panel" → "Add/Remove Programs", and select the item "VScom drivers for virtual serial ports". Click "Change/Remove" to remove the drivers.



Uninstall NetCom Drivers

8. TECHNICAL DATA

- 1, 2, 4 or 8 serial ports RS232 and RS232/422/485
- Fast Ethernet auto-detecting
- Serial speed up to 460 kbps
- Drivers for virtual serial ports: XP, Win 2000, NT 4.0, Linux
- TCP RAW connection Server/Client Mode
- UDP data transfer
- Configuration over webbrowser
- Protocols: TCP/IP, UDP, HTTP, Telnet, SNMP, DHCP, ICMP, DNS

9. ORDERING INFORMATION

- NetCom 111 1 port RS232
- NetCom 113 1 port RS232/422/485
- NetCom 211 2 ports RS232 on RJ45
- NetCom 411 4 ports RS232
- NetCom 413 4 ports RS232/422/485
- NetCom 811 8 ports RS232
- NetCom 813 8 ports RS232/422/485

Note:

FCC Caution: Any changes or modifications not expressly approved by the party responsible for compliance could void the user's authority to operate this equipment.

This device complies with Part 15 of the FCC Rules. Operation is subject to the following two conditions: (1) This device may not cause harmful interference, (2) this device must accept any interference received, including interference that may cause undesired operation.

IMPORTANT NOTE:

FCC Radiation Exposure Statement:

This equipment complies with FCC radiation exposure limits set forth for an uncontrolled environment. This equipment should be installed and operated with minimums distance 20cm between the radiator and your body.



Driver Download: <http://www.vscom.de/drivers.php?local=1>
<http://www.vscom.com.tw>
Product Information: <http://www.vscom.de/products/home.htm>
<http://www.vscom.com.tw>
Purchase: http://www.vscom.de/where_to_buy.htm