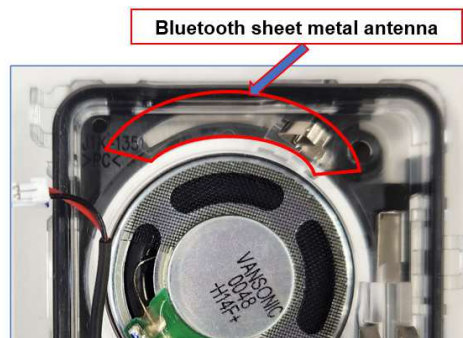


## **NX-3210R-K3 Bluetooth Antenna Specification and Description**

Output Power:	2.5mW (Power Class 2) 0 dBm (Min. -6 dBm, Max. +4 dBm)
Current consumption:	100 mA max.
Version	3.0 (non HS) and 4.0
Channel	BT3.0: 79 ch hopping, 1MHz step BT4.0: 40 ch hopping, 2MHz step
Modulation method	FHSS (GFSK, $\pi/4$ dPSK, 8DPSK)
Antenna type	sheet metal antenna
Antenna gain	2.53 dBi (max)

### ●Photos of the Antenna



### ●Antenna Gain Test Equipment

Horn Antenna : SCHWARZBECK BBHA 9120 D (Cal. Expiration date : 08/31/2024)

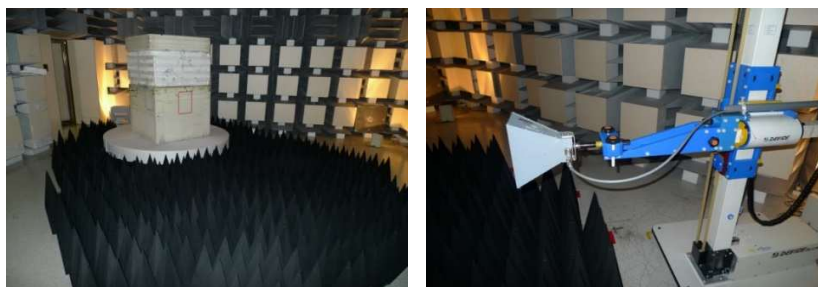
Signal Analyzer : ROHDE&SCHWARZ FSV (Cal. Expiration date : 05/31/2024)

### ●Test Location

1-16-2 Hakusan, Midori-ku, Yokohama-shi, Kanagawa 226-8525, Japan

JVCKENWOOD Corporation

### ●Test Set up Photos



●Polar Plot

