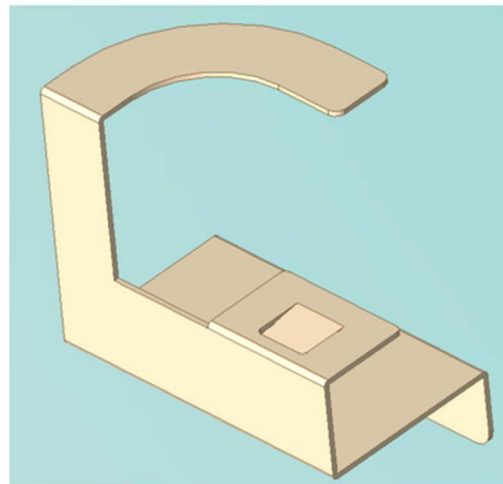


Antenna Specification

- Peak Antenna Gain

Peak Antenna gain: 2.4GHz: -1.3 dBi (max), 5GHz: -4.2 dBi (max)

- Photos of the Antenna



- Antenna Gain Test Equipment

Satimo/SG32

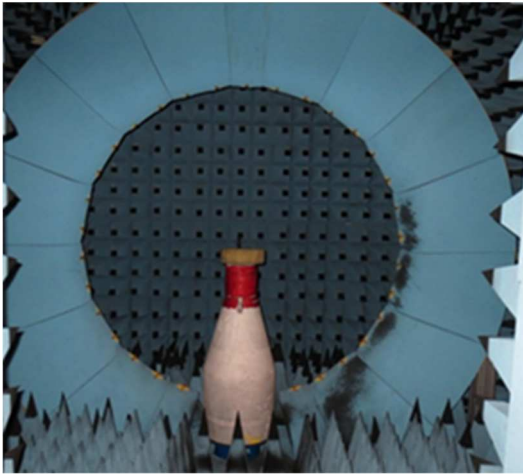
- Test Location

Chi-18 Sodanimachi, Hakusan-shi, Ishikawa, Japan, 9202101

Kanazawa Murata Manufacturing.Co.,Ltd

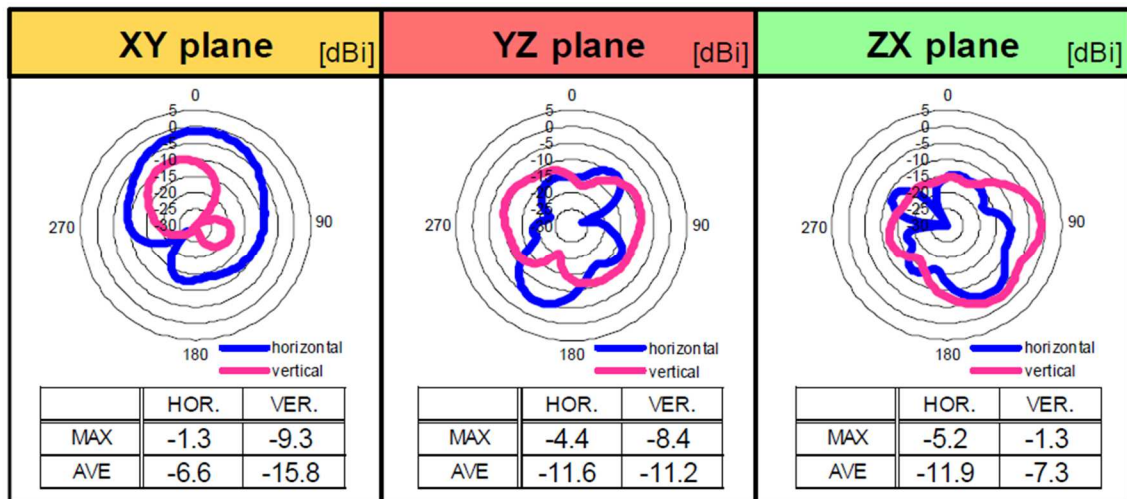
● Test Set up Photos

Satimo/SG32



● Polar Plot

2.4GHz



5GHz

