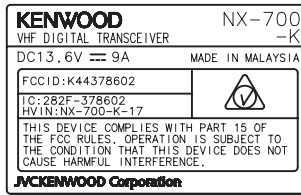


(2:1)

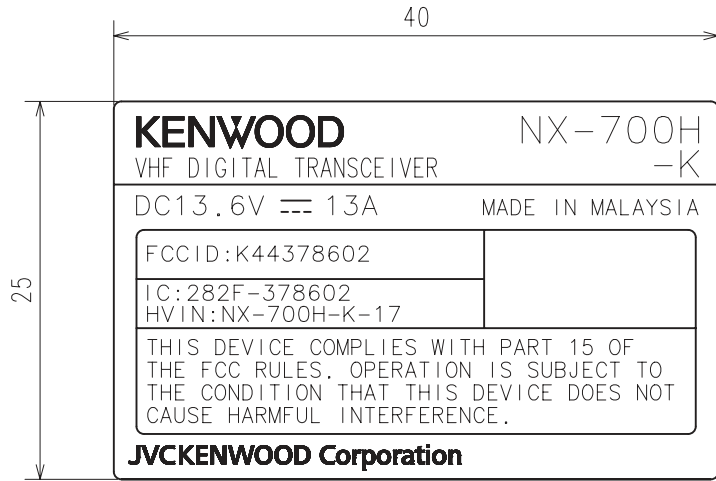


(1:1)

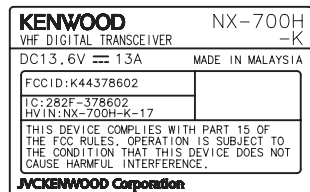
MATERIAL

LINTEC FNS MATT S100 PAT1
 (AL EVAPORATION PLATE t0.1 FROSTED SILVER)

	DESIGN	DATE	MODEL
		JVCKENWOOD Corporation	NX-700K MODEL NAME PLATE



(2:1)

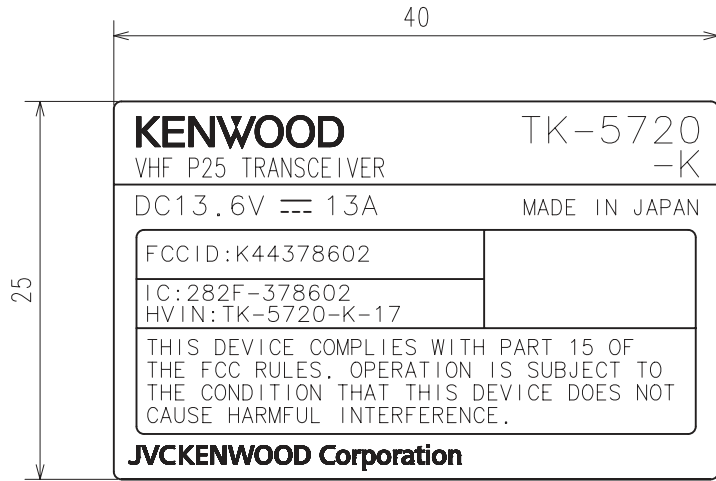


(1:1)

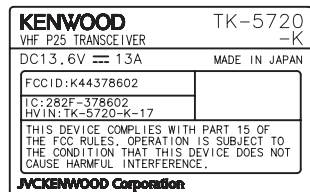
MATERIAL

LINTEC FNS MATT S100 PAT1
 (AL EVAPORATION PLATE t0.1 FROSTED SILVER)

	DESIGN	DATE	MODEL
		JVCKENWOOD Corporation	NX-700HK MODEL NAME PLATE



(2:1)



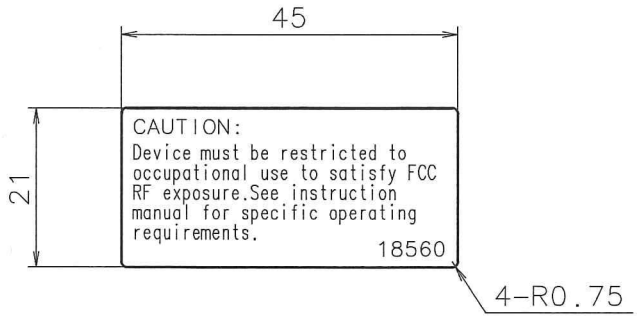
(1:1)

MATERIAL

LINTEC FNS MATT S100 PAT1
 (AL EVAPORATION PLATE t0.1 FROSTED SILVER)

	DESIGN	DATE	MODEL
		JVCKENWOOD Corporation	TK-5720K MODEL NAME PLATE

1 2 3 4



CAUTION:
Device must be restricted to occupational use to satisfy FCC RF exposure. See instruction manual for specific operating requirements.

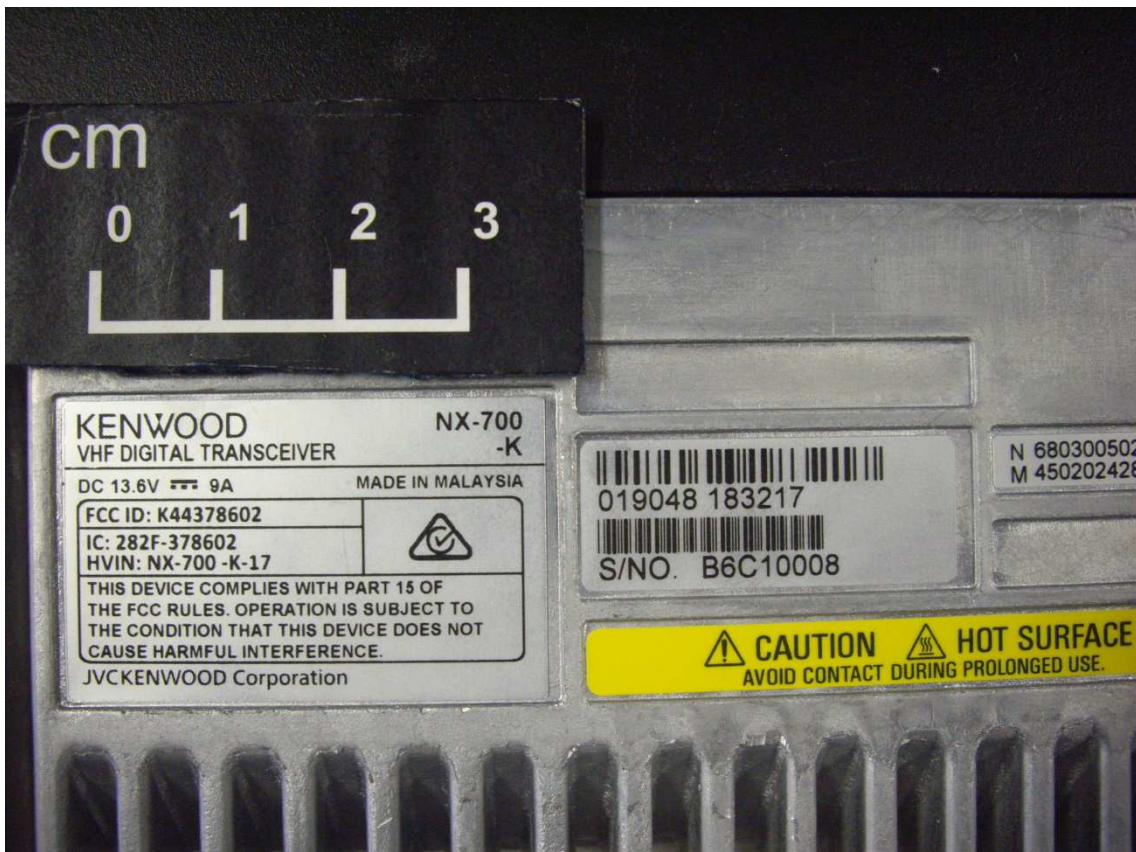
18560

-	-	-	Al EVAPORATION PLATE t0.05 FROSTED SILVER	SEAL PRINTING LAMINATE (FROSTING) SUPER STRONG TACKIFIER	-	
NO.	PART NUMBER	NOTE	MATERIAL	FINISH	MODEL	QTY.
SCALE	1 : 1	DESIGNED	CHECKED	APPROVED	PART NAME	
UNIT	: mm				CAUTION LABEL	
	DATE			DRAWING NUMBER	MMV-	SHEET NO. REL.
JIS Z8310-84	KENWOOD			PART NO.		S

A
B
C
D
E
F



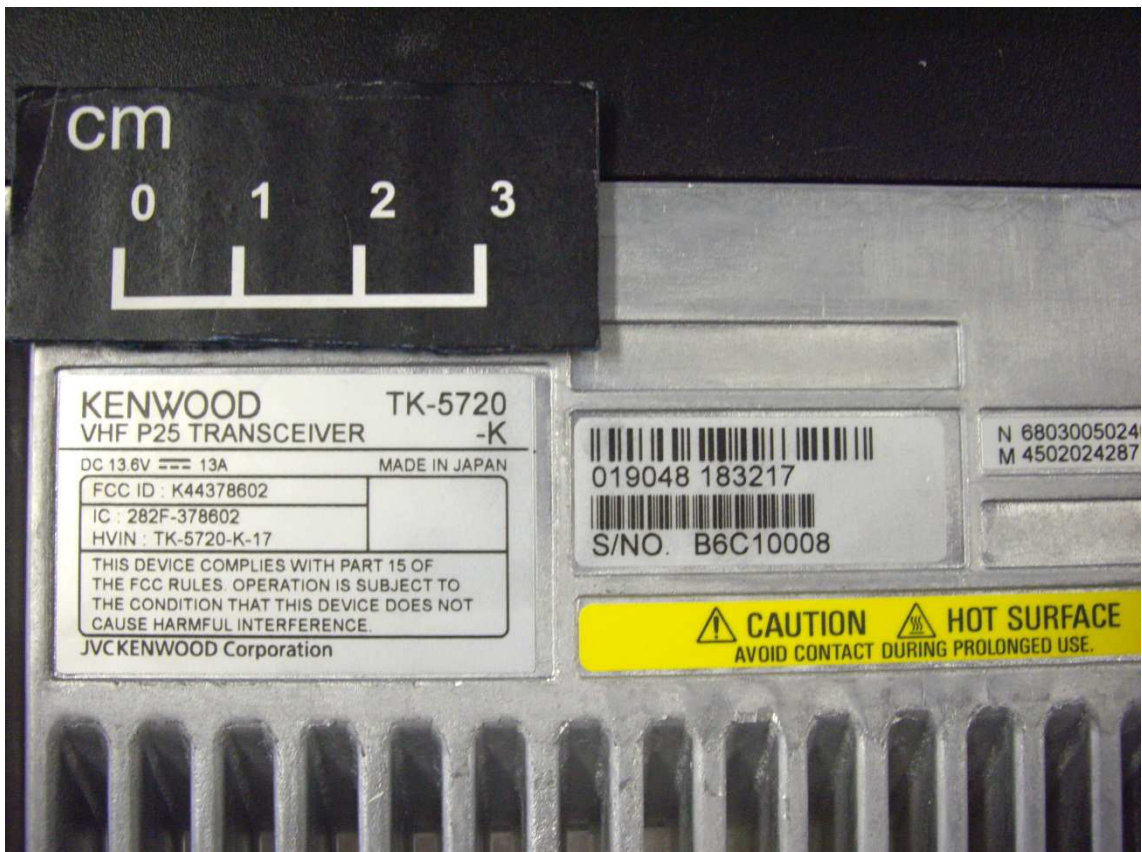
CAUTION STICKER LABEL



MODEL NAME PLATE LABEL (NX-700-K)



MODEL NAME PLATE LABEL (NX-700H-K)



MODEL NAME PLATE LABEL (TK-5720-K)