



ACCELERATING
INNOVATION

**Hughes Inmarsat
2.4GHz Device
Hughes 9203
February 10, 2023**



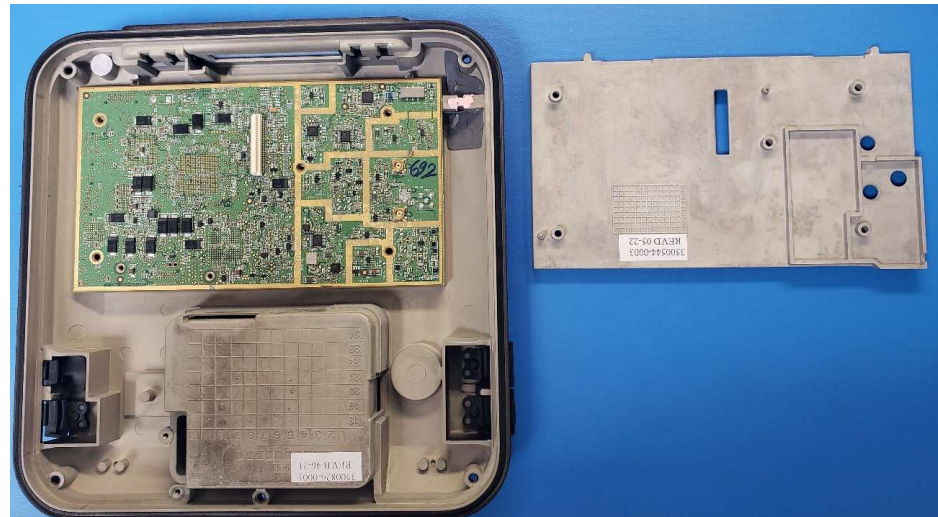
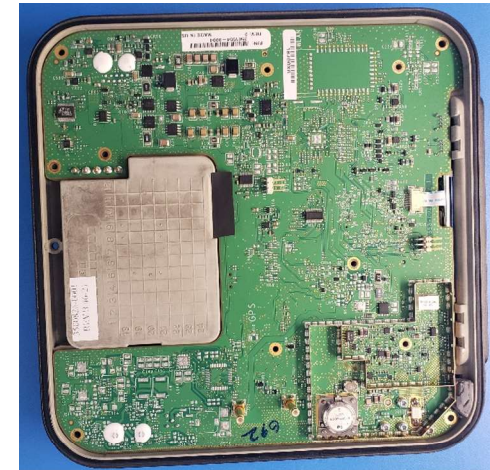
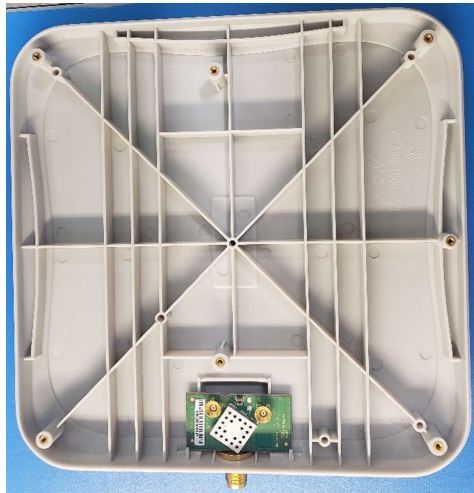
Summary

- The purpose of this report is to characterize Hughes L-Band Terminal Wifi antenna.
- This report will provide measured return loss, efficiency and radiation patterns.

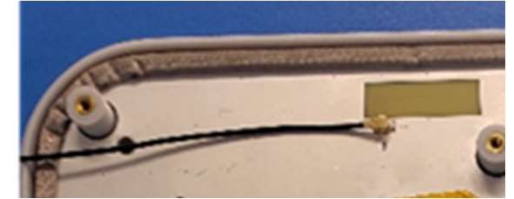
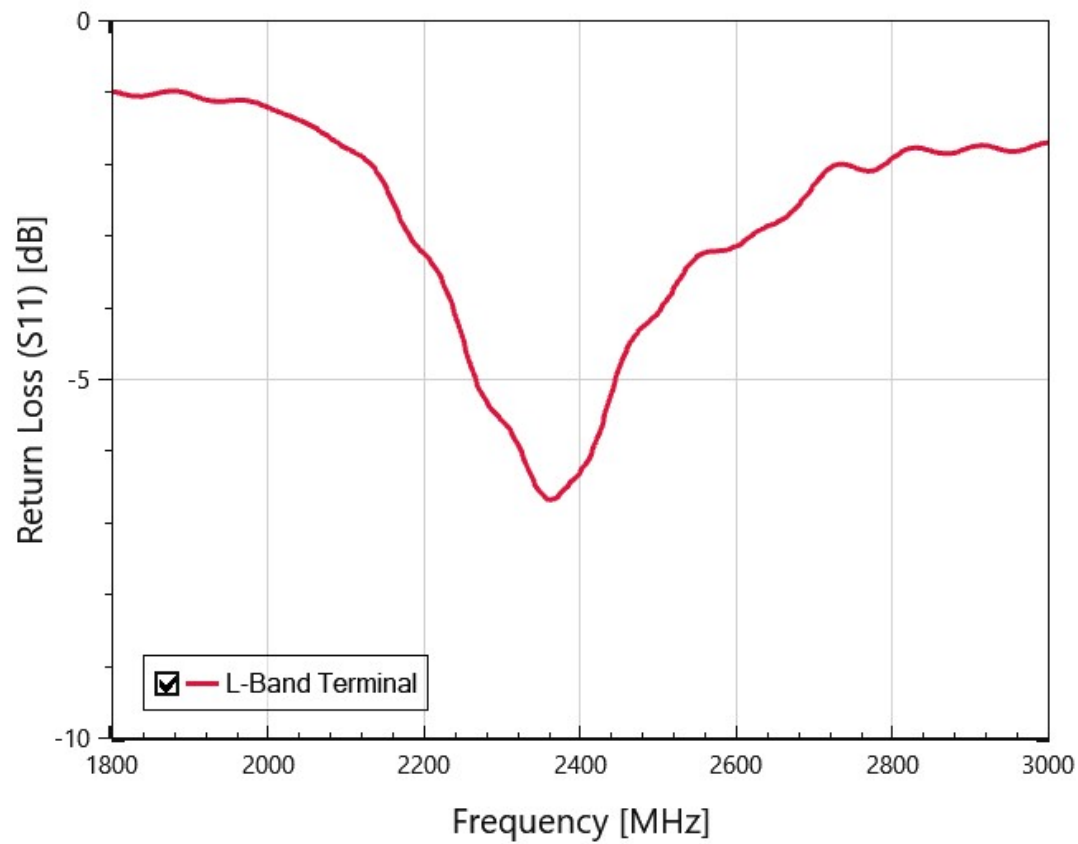
Inmarsat Device



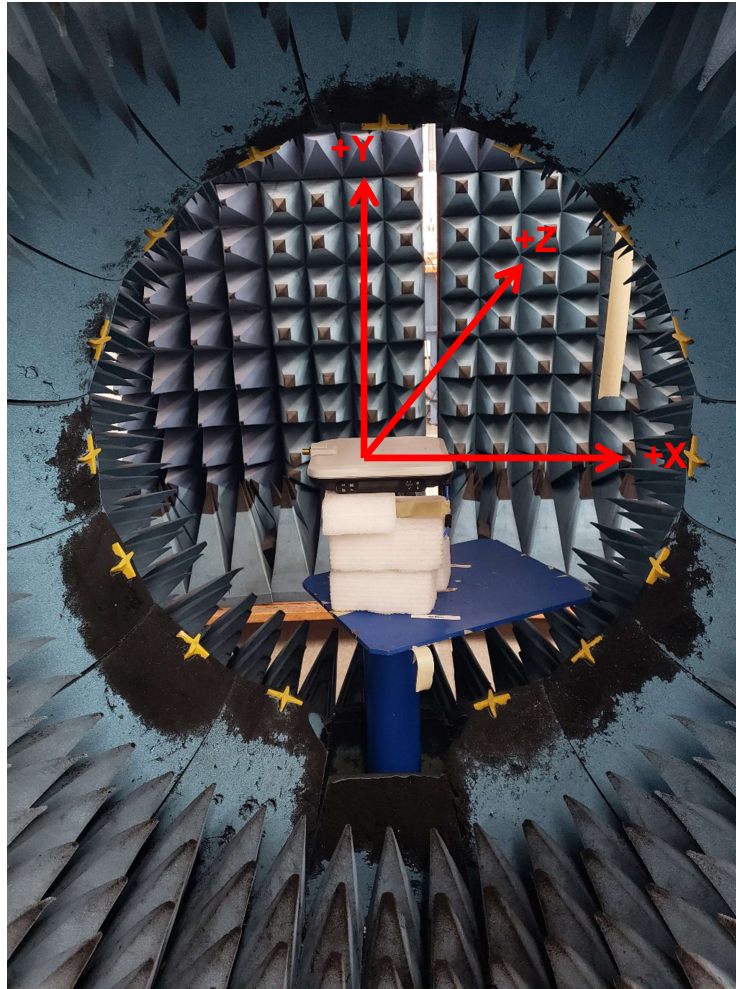
Inmarsat Device Disassembled



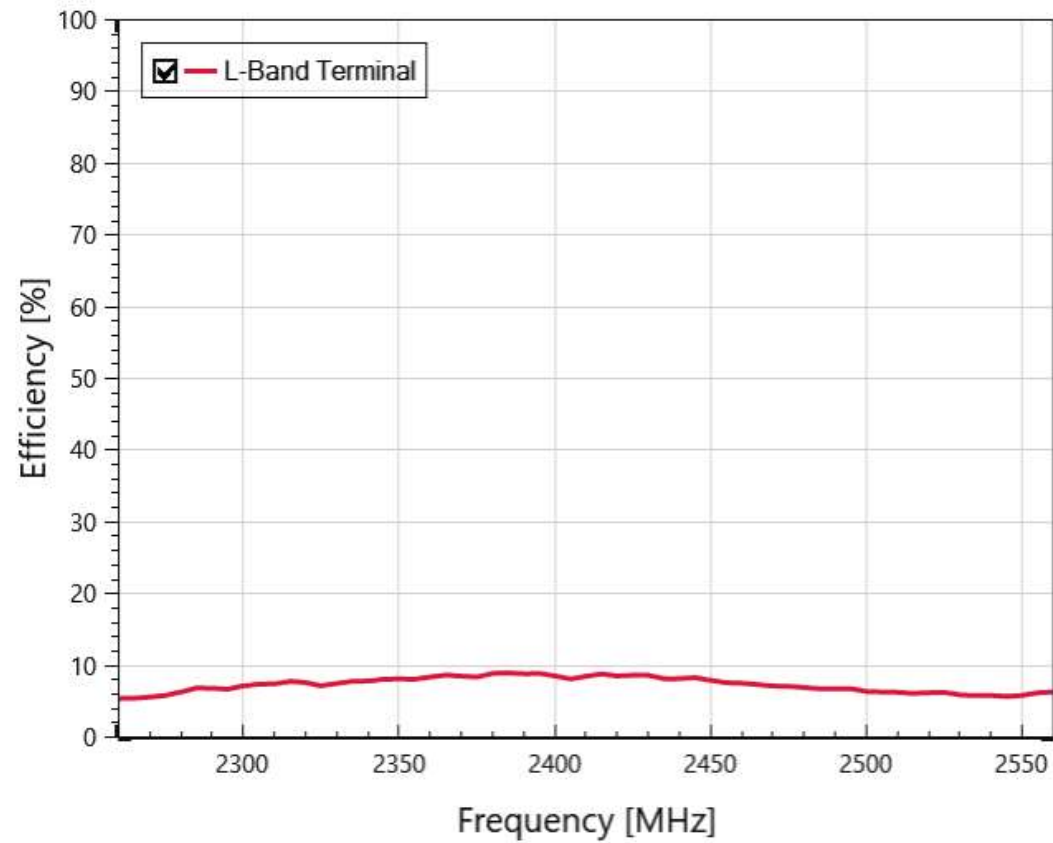
Return Loss



Coordinate System

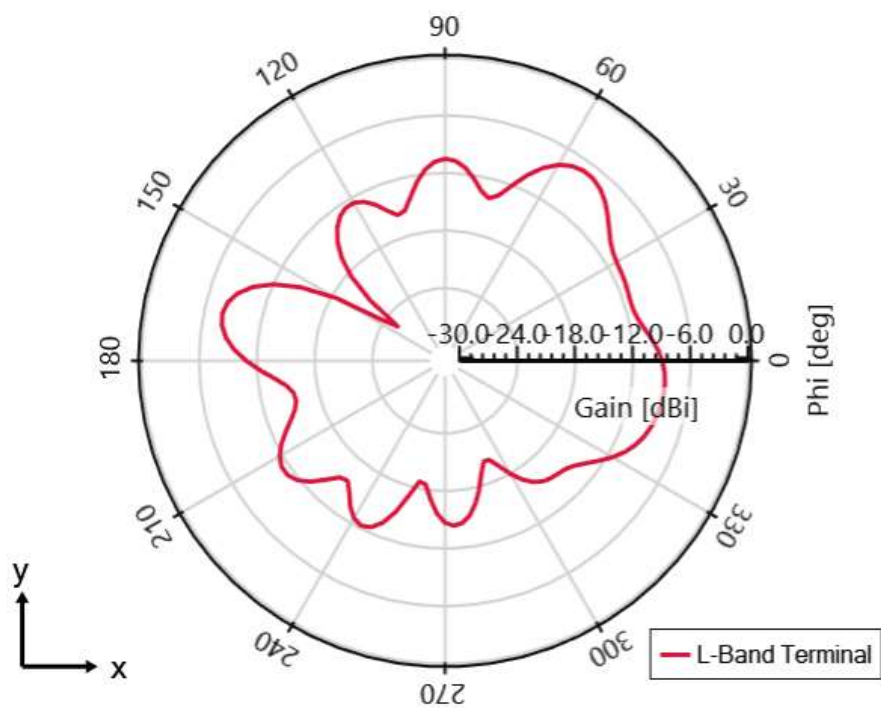


Efficiency

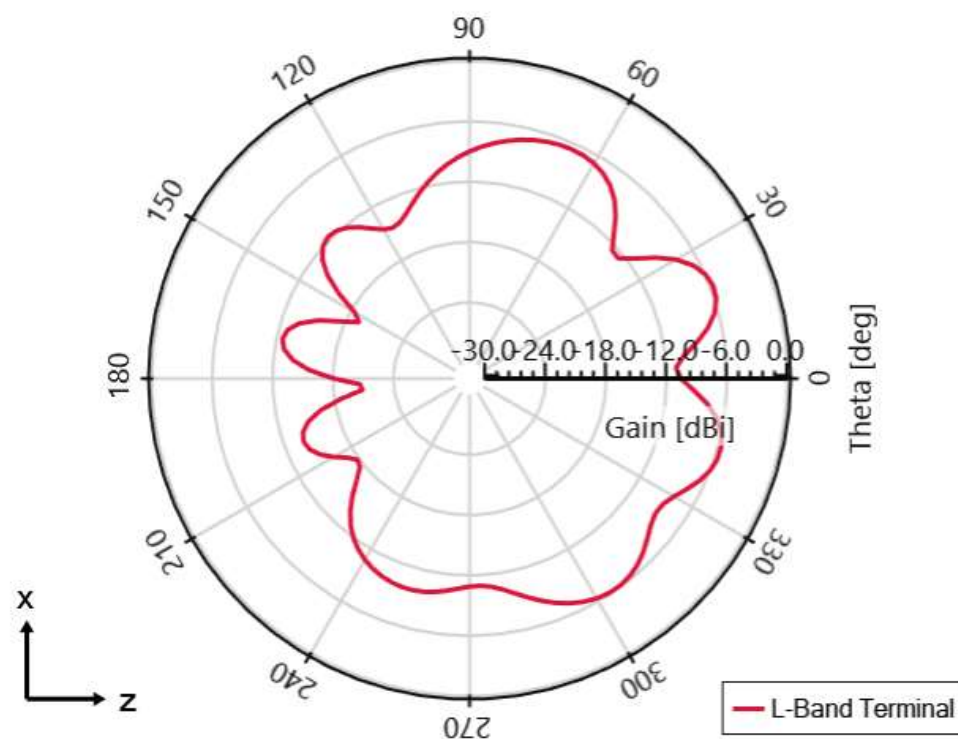


Radiations Patterns

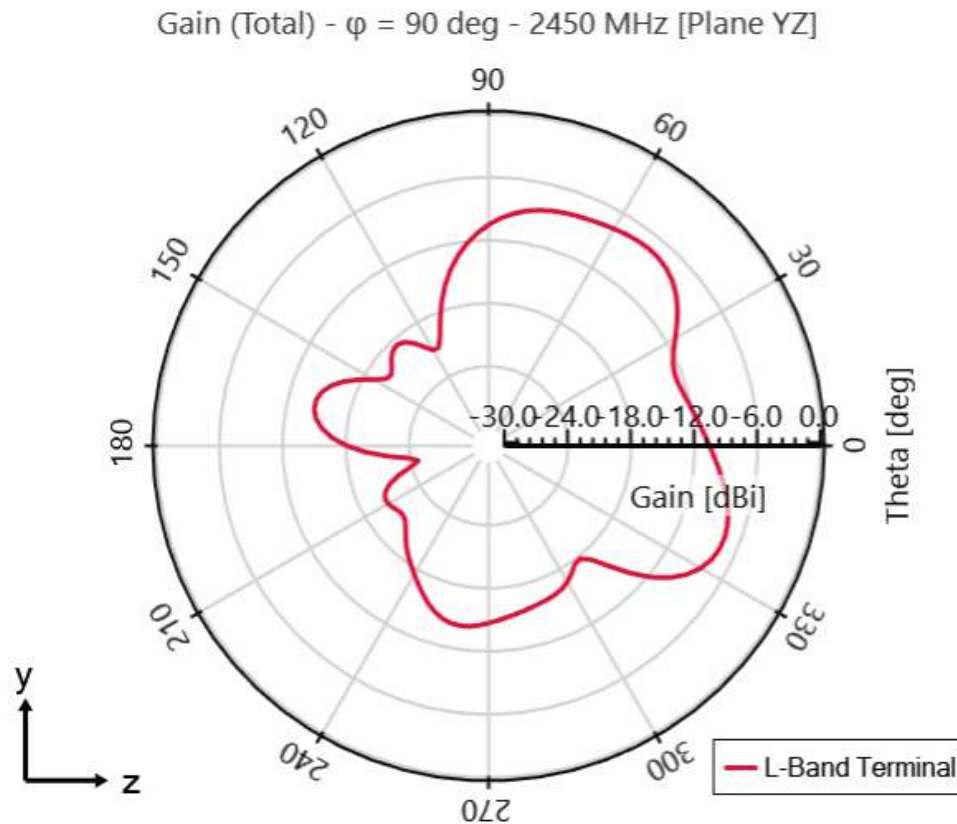
Gain (Total) - $\theta = 90$ deg - 2450 MHz [Plane XY]



Gain (Total) - $\phi = 0$ deg - 2450 MHz [Plane XZ]



Radiations Patterns



Summary:
The maximum gain of the WLAN antenna is -6 dBi

THANK YOU.



KYOCERA-AVX.com