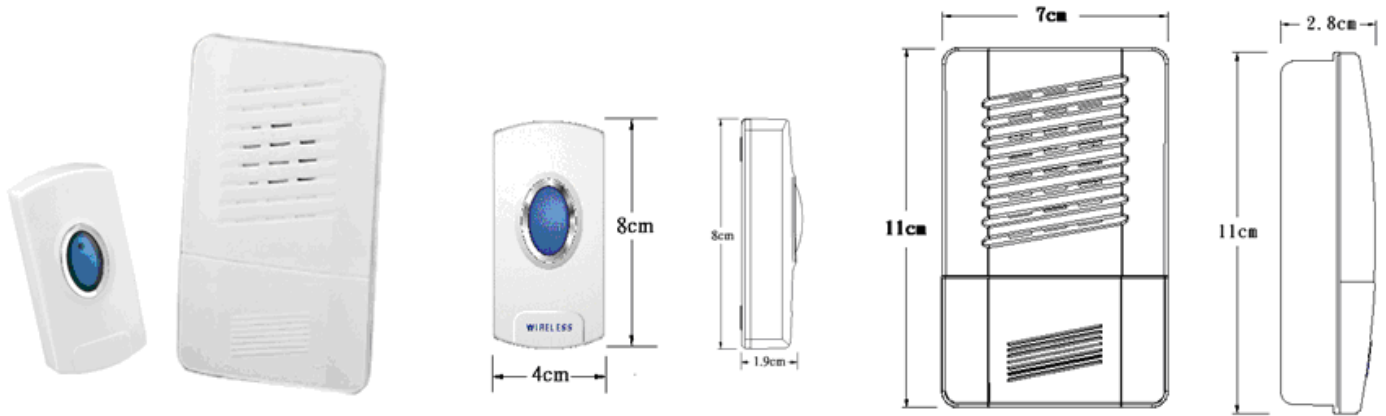


# WD-3625T WIRELESS DOOR CHIME

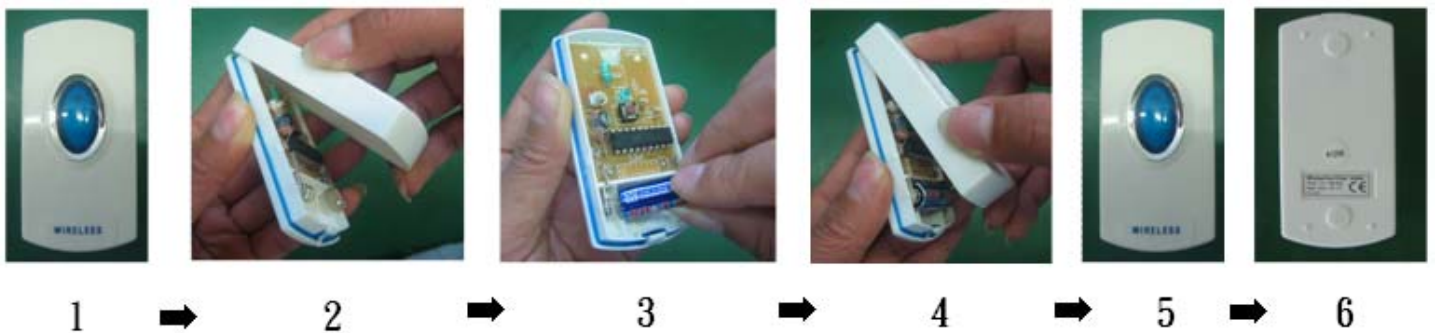
Model No.: WD-3625T



Specifications:

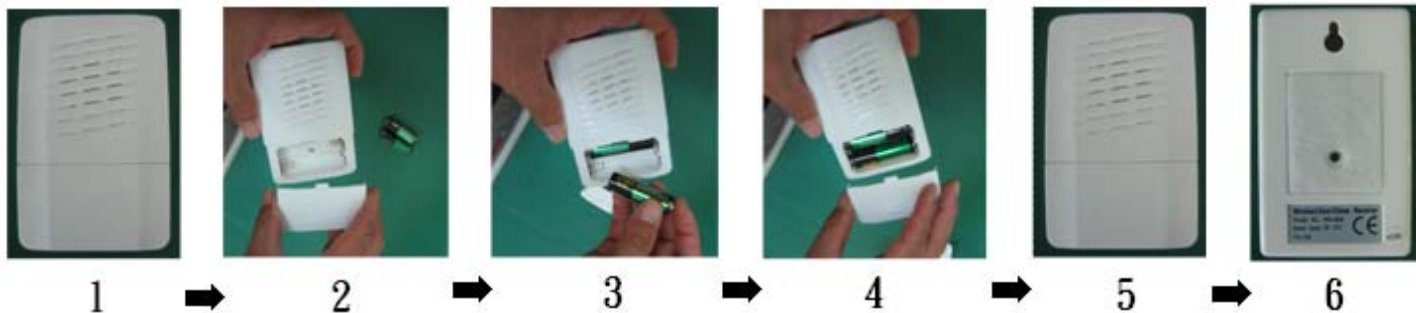
	Rated Voltage	Battery	Working Current	Standby Current	Working Frequency	Operating Distance	Tone	Dimension (L x W x H)
Transmitter	12V DC	A23 x 1pc battery (included)	9mA	None- OFF	433.92MHz	80 M	25 selectable tones	8 x 4x 1.9 cm
Receiver	3V DC	AA x 2 pcs battery	0.5mA	100Ma				11 x 7 x 2.8 cm

**Installation for the transmitter ( please see figure 1-6)**



1. Carefully lever off battery compartment front cover with flat bladed screwdriver, and take out of the battery, use either screws or double-sided tape to mount the doorbell button, and then insert battery on.
- 2.To mount with screw, remove the back of the case and hang the door bell button on.
3. If mounting onto a hard wall or brick surface, please use wall plug prior to using the screws
4. Don't not mount the doorbell button onto metal or near metal studs, this reduces the transmitter range.

### Installation for the receiver ( please see figure 1-6)



1. Insert two “AA “Alkaline type batteries in the unit ensuring that the marked polarities are followed carefully
2. Mount the unit using the Velcro pads provided
3. Press the selected musical button for tone choice
4. Please note the transmitter and the receiver must be mounted within 80 meters of each other.

### Features:

- \*No wired required, easy to install
- \*Use digital code transmitter-receiver system; prevent interference between users and error ringing
- \*Water-proof transmitter
- \*Long operating range up to 80 meter, no obstacle problem
- \*25 selectable tones, set sounds at receiver
- \*Lower power consumption, long battery life
- \*Applicable for an emergency call for sick and aged, house, hospital, bank or public area

### CAUTION:

Any changes or modifications not expressly approved by the party responsible for compliance could void the user's authority to operate the equipment.

This device complies with part 15 of the FCC Rules. Operation is subject to the following two conditions: (1) This device may not cause harmful interference, and (2) this device must accept any interference received, including interference that may cause undesired operation.

### Canada Warning

"Industry Canada regulatory information Operation is subject to the following two conditions: (1) this device may not cause interference, and (2) this device must accept any interference, including interference that may cause undesired operation of the device." "The user is cautioned that this device should be used only as specified within this manual to meet RF exposure requirements. Use of this device in a manner inconsistent with this manual could lead to excessive RF exposure conditions."