

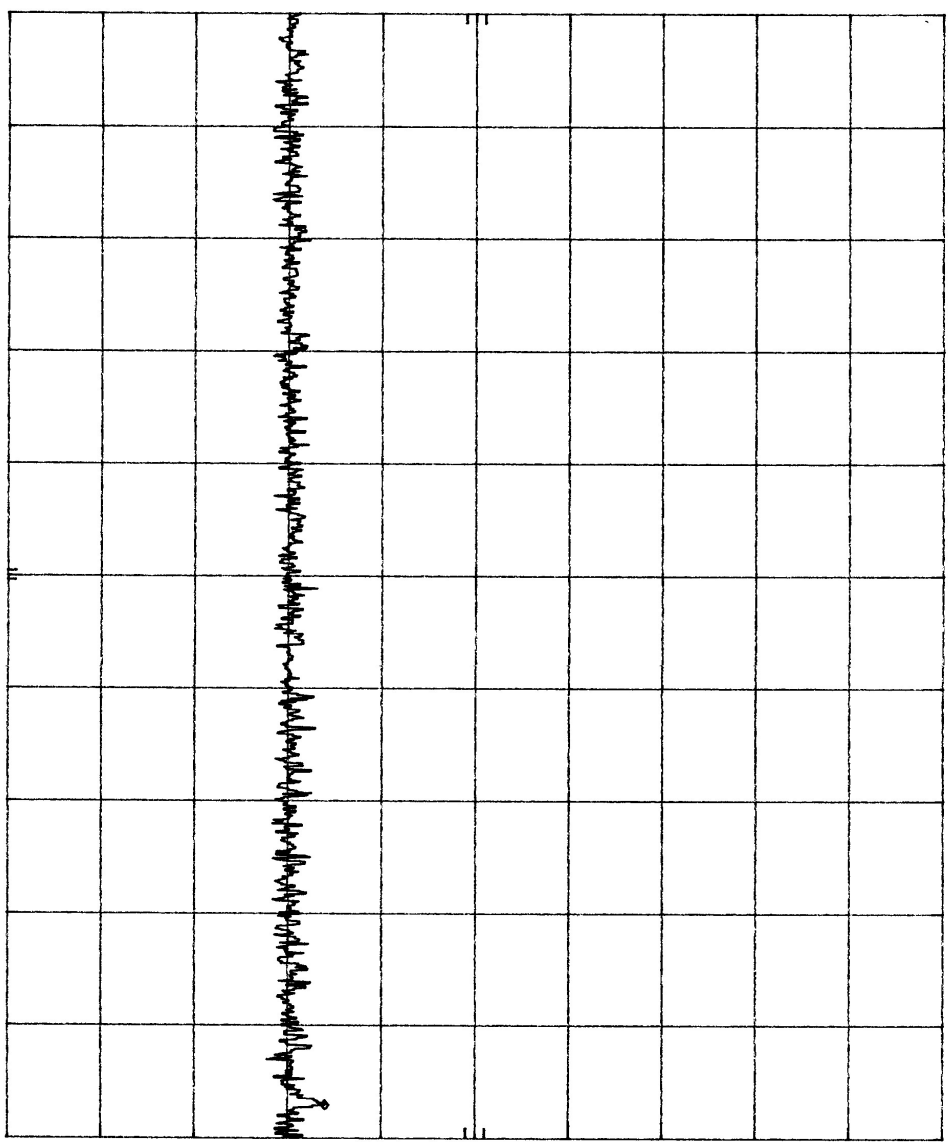
Plot # 7.3.k - Middle Channel - 9/29/98

HP

REF -20.0 DBm ATTEN 0 DB

MKR 893.25 MHz
-86.00 DBm

10 DB/

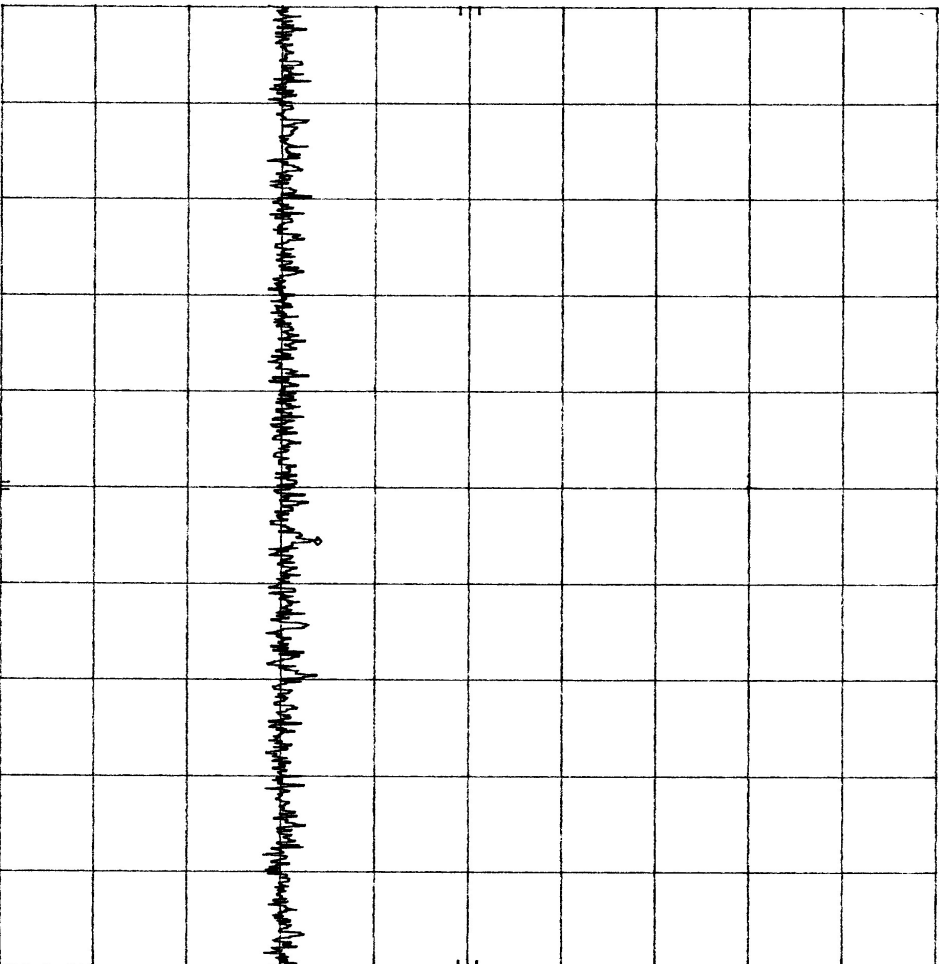


START 869.0 MHz STOP 894.0 MHz
 RES BW 100 KHz VBW 100 KHz SWP 20.0 msec

PILOT # 7.3.j - Low Channel - 9/29/98

MKR 882.88 MHz
-86.10 DBm

hp REF -20.0 DBm ATTEN 0 DB
10 DB/



START 869.0 MHz RES BW 100 KHZ VBW 100 KHZ SWP 20.0 msec
STOP 894.0 MHz

Plot # 7.3.1 - High Channel - 9/29/98

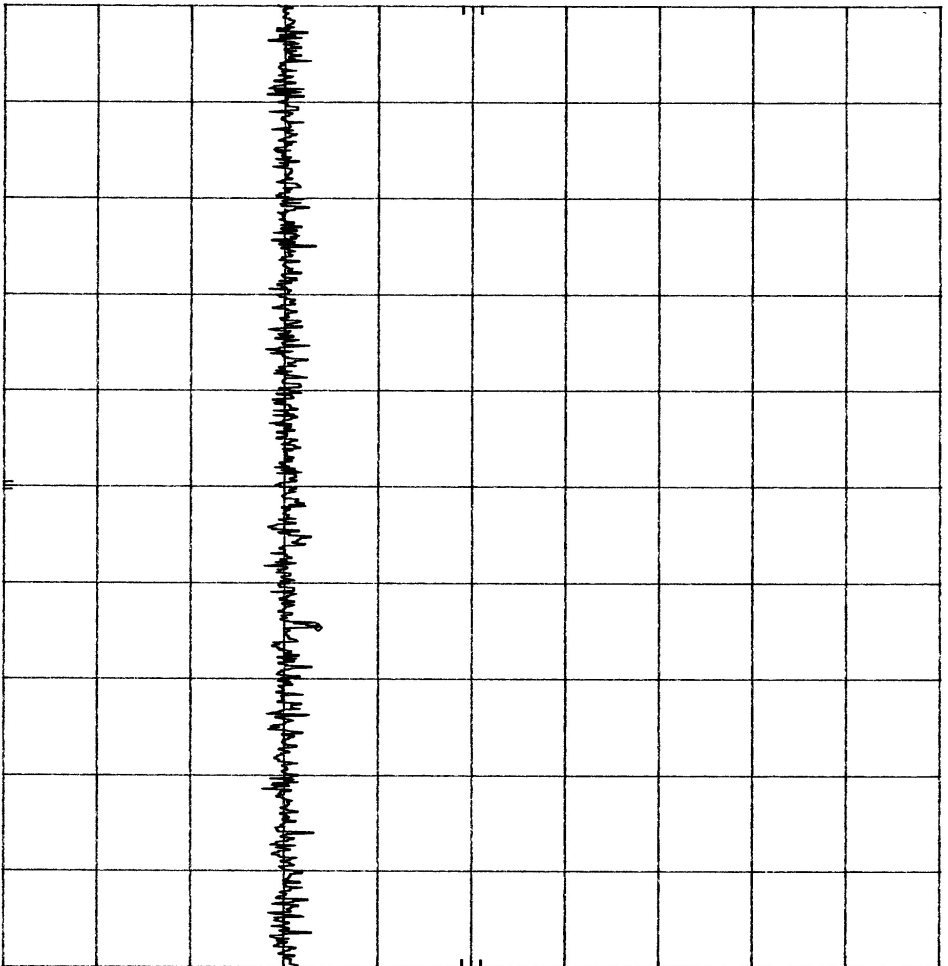
hp

REF -20.0 dBm

ATTEN 0 dB

MKR 885.15 MHz
-86.40 dBm

10 dB/



START 869.0 MHz

RES BW 100 KHz

VBW 100 KHz

STOP 894.0 MHz
SWP 20.0 msec