

# User manual

## KW1000

KVM over Wireless (KW1000) QUICK START GUIDE

2005 ALTUSEN. All rights reserved. All Other trademarks are the property of their respective owners. PAPE-1214-A00

## **FEDERAL COMMUNICATIONS COMMISSION**

This device complies with Part 15 of the FCC Rules. Operation is subject to the following two conditions:(1) this device may not cause harmful interference, and (2) this device must accept any interference received, including interference that may cause undesired operation.

### **NOTE**

This equipment has been tested and found to comply with the limits for a Class B digital device, pursuant to Part 15 of the FCC Rules. These limits are designed to provide reasonable protection against harmful interference in a residential installation. This equipment generates, uses and can radiated radio frequency energy and, if not installed and used in accordance with the instructions, may cause harmful interference to radio communications. However, there is no guarantee that interference will not occur in a particular installation. If this equipment does cause harmful interference to radio or television reception, which can be determined by turning the equipment off and on, the user is encouraged to try to correct the interference by one or more of the following measures:

- Reorient or relocate the receiving antenna.
- Increase the separation between the equipment and receiver.
- Connect the equipment into an outlet on a circuit different from that to which the receiver is connected.
- Consult the dealer or an experienced radio/TV technician for help.

Changes or modifications not expressly approved by the party responsible for compliance could void the user's authority to operate the equipment.

This device and its antenna(s) must not be co-located or operating in conjunction with any other antenna or transmitter.

This equipment complies with FCC radiation exposure limits set forth for an uncontrolled environment. In order to avoid the possibility of exceeding the FCC radio frequency exposure limits, human proximity to the antenna shall not be less than 20cm (8 inches) during normal operation.

## Package Contents:

- ◆  KW1000 KVM over Wireless Control Unit
- ◆  CS Custom KVM Cable Set
- ◆  Power Adapter
- ◆  Software CD
- ◆  Quick Start Guide ; User Manual
- ◆  Waranty Registration Card

## System Requirements

This section details the required hardware components for successful installation and use of the KW1000

### Console

- Pentium 3 with 1 GHz processor or higher
- Screen resolution is at 1024 x 768 or higher

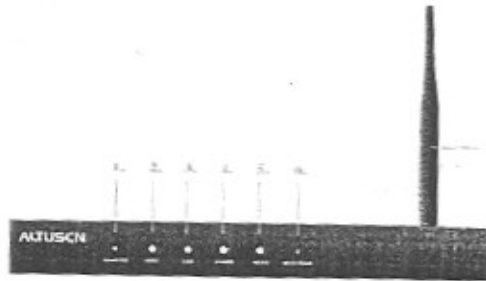
### Computers

To use and access the KW1000 successfully, your computer requires the following:

- Windows-DirectX 7.0 or higher
- Java-Sun's Java 2 JRE 1.4 or higher

## The KW1000 Unit(Front View)

1. Reset / FW
2. Tx / Rx
3. Link LED
4. Power LED
5. WLAN
6. WLAN Reset
7. Antenna



## The KW1000 Unit(Rear View)



1. PC/KVM
2. Local Console / Video
3. Local Console / Keyboard
4. Local Console / Mouse
5. Power Jack

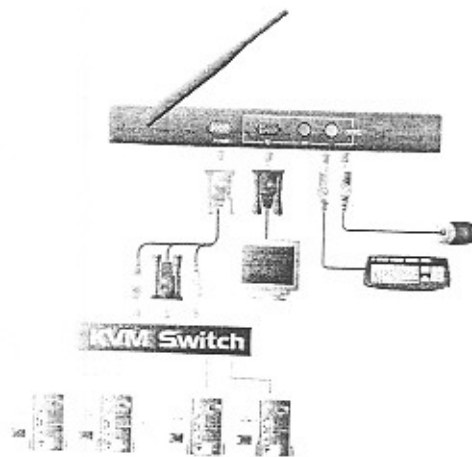
## Hardware Installation

To prevent damage to your equipment, please do the following before you begin installation:

- ⚠ • Make sure that power to all the devices you will be connecting up have been turned off. You must unplug the power cords of any computers that have the Keyboard Power On function.
- ⚡ • Make sure that all devices on the installation are properly grounded.

## Hardware Installation

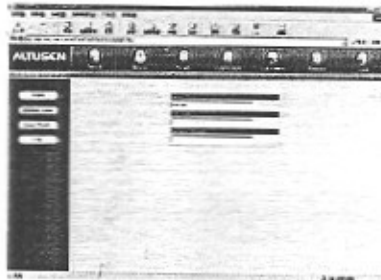
1. Plug the local administrator's keyboard, mouse, and monitor into the unit's console ports.
2. Use the KVM cable provided with this package to connect the KW1000's KVM port to the Keyboard, Video and Mouse ports of the server or KVM switch that you are installing.
3. Power up the following device in this order : KVM→PC→KW1000
4. Plug the power adapter into the power jack



## Software Installation

KW1000 has fixed IP address of 192.168.1.101 with a subnet mask of 255.255.255.0. Be sure to configure your computer's wireless card for a corresponding IP address(192.168.1.1-192.168.1.254).

1. Open your browser and specify the KW1000's IP address in the browser's URL location bar : 192.168.1.10
2. Provide a valid User name and Password. Then click Login to continue.



After you have successfully logged in, the KW1000 main screen appears:



## Screen Elements

Icon	Purpose
Apply	Saves the changes you make in the administration dialog boxes, but does not implement the changes. The changes only go into effect when you enable Reset on exit and log out.
Windows Client	Allows users to connect to the KW1000 using Windows software, and to remotely control the connected server.
Java Client	Allows users that have Java installed to connect to KW1000 and to remotely control the connected server
Log	All the events that take place on the KW1000 are recorded in a log file.
Logout	Click this icon to log out and end your KW1000 SESSION.