



Fig. 1: in the laptop mode, WWAN and WiFi can be enabled either by Flybook Control Center or hot key (Fn+F9 for WWAN or Fn+F8 for WiFi)



Fig. 2: the photo of the tablet PC mode



Fig. 3: in the tablet PC mode, hot-key and Flybook Control Center for WWAN and WiFi are disabled.



Fig. 4: in the process of changing to tablet PC mode, when the angle is smaller than 25 degree, Type Switch on the main board will sense the magnet inside of the panel and then turn off WWAN and WiFi. The relative location of Type SW and magnet are shown in the figure. The hinge can lock the panel in fixed location.

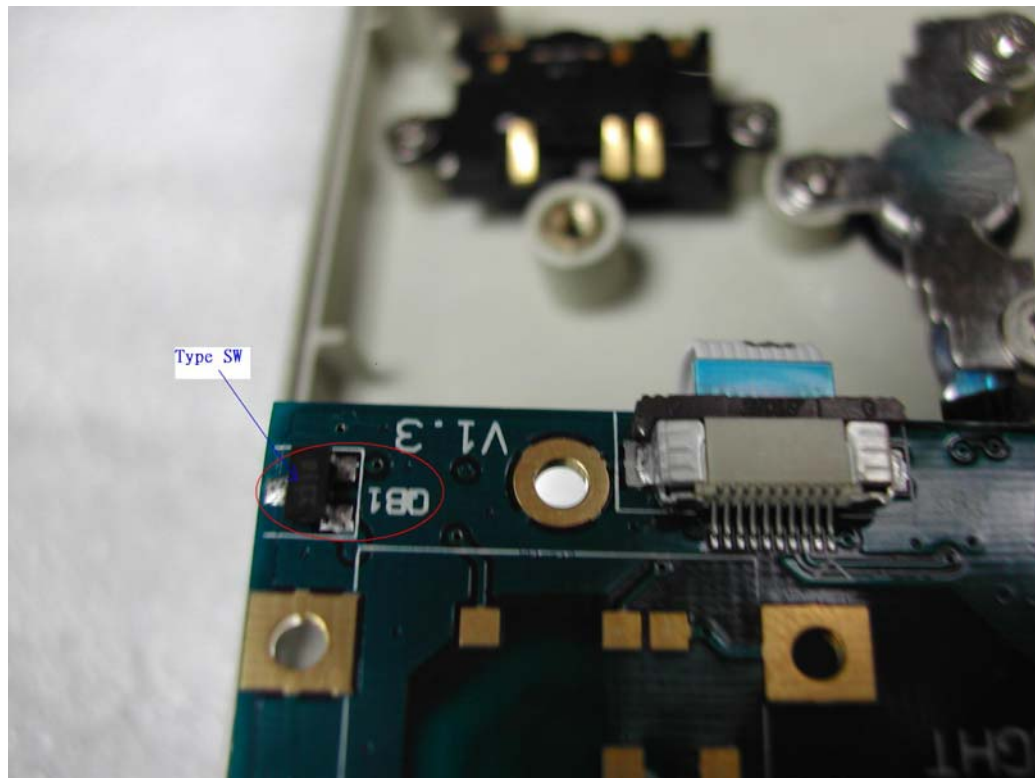


Fig. 5: the location of Type Switch on the main board



Fig. 6: the location of magnet inside of the panel