



Specific Absorption Rate (SAR) Test Report
for
Dialogue Technology Corp.
on the
FLYBOOK

Report No. : FA6O2516-01-2-2-03
Trade Name : DIALOGUE
Model Name : V5W1BB
FCC ID : JYV-V5W1BB
Date of Testing : Feb. 14 and Mar. 17, 2007
Date of Report : Mar. 30, 2007
Date of Review : Mar. 30, 2007

- The test results refer exclusively to the presented test model / sample only.
- Without written approval of SPORTON International Inc., the test report shall not be reproduced except in full.
- Report Version: Rev. 03

SPORTON International Inc.

6F, No.106, Sec. 1, Hsin Tai Wu Rd., Hsi Chih, Taipei Hsien, Taiwan, R.O.C.



Table of Contents

1. Statement of Compliance	1
2. Administration Data	2
2.1 Testing Laboratory	2
2.2 Detail of Applicant	2
2.3 Detail of Manufacturer	2
2.4 Application Detail	2
3. Scope	3
3.1 Description of Device Under Test (DUT)	3
3.2 Product Photo	4
3.3 Applied Standards:	5
3.4 Device Category and SAR Limits	6
3.5 Test Conditions	6
3.5.1 Ambient Condition:	6
3.5.2 Test Configuration:	6
4. Specific Absorption Rate (SAR)	7
4.1 Introduction	7
4.2 SAR Definition	7
5. SAR Measurement Setup	8
5.1 DASY4 E-Field Probe System	9
5.1.1 ET3DV6 E-Field Probe Specification	10
5.1.2 ET3DV6 & EX3DV3 E-Field Probe Calibration	11
5.2 DATA Acquisition Electronics (DAE)	13
5.3 Robot	14
5.4 Measurement Server	14
5.5 SAM Twin Phantom	14
5.6 Data Storage and Evaluation	16
5.6.1 Data Storage	16
5.6.2 Data Evaluation	16
5.7 Test Equipment List	19
6. Tissue Simulating Liquids	20
7. Uncertainty Assessment	21
8. SAR Measurement Evaluation	24
8.1 Purpose of System Performance check	24
8.2 System Setup	24
8.3 Validation Results	26
9. Description for DUT Testing Position	27
10. Measurement Procedures	28
10.1 Spatial Peak SAR Evaluation	28
10.2 Scan Procedures	29
10.3 SAR Averaged Methods	29
11. SAR Test Results	30
11.1 Notebook Bottom Touch with Main Antenna	30
11.2 Notebook Bottom Touch with Aux. Antenna	30
12. References	31
 Appendix A – System Performance Check Data	
Appendix B – SAR Measurement Data	
Appendix C – Calibration Data	



1. Statement of Compliance

The Specific Absorption Rate (SAR) maximum result found during testing for the **Dialogue Technology Corp. FLYBOOK V5W1BB** on the **2.4GHz band** and **5GHz band** body SAR are as follows (with expanded uncertainty 20.6% for 2.4GHz band and 25.9% for 5GHz band):

2400 ~ 2483.5 MHz Body SAR (W/kg)	5150 ~ 5250 MHz <Band I> Body SAR (W/kg)	5725 ~ 5825 MHz <Band III> Body SAR (W/kg)
0.01	0.109	0.143

The co-location of WLAN and Bluetooth were also checked. It is in compliance with Specific Absorption Rate (SAR) for general population/uncontrolled exposure limits specified in FCC 47 CFR part 2 (2.1093) and ANSI/IEEE C95.1-1999 and had been tested in accordance with the measurement methods and procedures specified in OET Bulletin 65 Supplement C (Edition 01-01).

Approved by

Dr. Daniel Lee
EMC/SAR Director



2. Administration Data

2.1 Testing Laboratory

Company Name : Sporton International Inc.
Department : Antenna Design/SAR
Address : No.52, Hwa-Ya 1st RD., Hwa Ya Technology Park, Kwei-Shan Hsiang, TaoYuan
Hsien, Taiwan, R.O.C.
Telephone Number : 886-3-327-3456
Fax Number : 886-3-327-0973

2.2 Detail of Applicant

Company Name : Dialogue Technology Corp.
Address : 10F, No. 196, Sec. 2, Jungshing Rd., Shindian City, Taipei 231, Taiwan, R.O.C.

2.3 Detail of Manufacturer

Company Name : Dialogue Technology Corp.
Address : 10F, No. 196, Sec. 2, Jungshing Rd., Shindian City, Taipei 231, Taiwan, R.O.C.

2.4 Application Detail

Date of reception of application: Oct. 25, 2006
Start of test : Feb. 14, 2007
End of test : Mar. 17, 2007



3. Scope

3.1 Description of Device Under Test (DUT)

DUT Type :	FLYBOOK
Model Name :	V5W1BB
FCC ID :	JYV-V5W1BB
Type of Modulation :	802.11a : OFDM 802.11b : DSSS 802.11g : OFDM
Frequency Range :	802.11a : 5150 ~ 5250 MHz <Band I> / 5725 ~ 5825 MHz <Band III> 802.11b/g : 2400 ~ 2483.5 MHz
Maximum Output Power to Antenna :	802.11a : 16.93 dBm <Band I> / 18.09 dBm <Band III> 802.11b : 18.12 dBm 802.11g : 19.55 dBm
Antenna Type :	PIFA Antenna
Antenna Connector :	I-PEX
DUT Stage :	Production Unit
Application Type :	Certificate



3.2 Product Photo





3.3 Applied Standards:

The Specific Absorption Rate (SAR) testing specification, method and procedure for this FLYBOOK is in accordance with the following standards:

47 CFR Part 2 (2.1093),
IEEE C95.1-1999,
IEEE C95.3-2002,
IEEE P1528 -2003, and
OET Bulletin 65 Supplement C (Edition 01-01)



3.4 Device Category and SAR Limits

This device belongs to portable device category because its radiating structure is allowed to be used within 20 centimeters of the body of the user.

Limit for General Population/Uncontrolled exposure should be applied for this device, it is 1.6 W/kg as averaged over any 1 gram of tissue.

3.5 Test Conditions

3.5.1 Ambient Condition:

Item	802.11b/g	802.11a <Band I>	802.11a <Band III>
Ambient Temperature (°C)	20 ~ 24		
Tissue simulating liquid temperature (°C)	21.3	21.4	21.4
Humidity (%)	< 60%		

3.5.2 Test Configuration:

The data rates for SAR testing are 11Mbps for 802.11b, 6Mbps for 802.11g and 6 Mbps for 802.11a. Engineering testing software installed on the EUT can provide continuous transmitting RF signal. This RF signal utilized in SAR measurement has almost 100% duty cycle and its crest factor is 1.



4. Specific Absorption Rate (SAR)

4.1 Introduction

SAR is related to the rate at which energy is absorbed per unit mass in an object exposed to a radio field. The SAR distribution in a biological body is complicated and is usually carried out by experimental techniques or numerical modeling. The FCC recommends limits for two tiers of groups, occupational/controlled and general population/uncontrolled, based on a person's awareness and ability to exercise control over his or her exposure. In general, occupational/controlled exposure limits are higher than the limits for general population/uncontrolled.

4.2 SAR Definition

The SAR definition is the time derivative (rate) of the incremental energy (dW) absorbed by (dissipated in) an incremental mass (dm) contained in a volume element (dv) of a given density.

). The equation description is as below:

$$\mathbf{SAR} = \frac{d}{dt} \left(\frac{dW}{dm} \right) = \frac{d}{dt} \left(\frac{dW}{\rho dv} \right)$$

SAR is expressed in units of Watts per kilogram (W/kg)

SAR measurement can be either related to the temperature elevation in tissue by

$$\mathbf{SAR} = C \frac{\delta T}{\delta t}$$

, where C is the specific heat capacity, δT is the temperature rise and δt the exposure duration,

or related to the electrical field in the tissue by

$$\mathbf{SAR} = \frac{\sigma |E|^2}{\rho}$$

, where σ is the conductivity of the tissue, ρ is the mass density of the tissue and E is the rms electrical field strength.

However for evaluating SAR of low power transmitter, electrical field measurement is typically applied.

5. SAR Measurement Setup

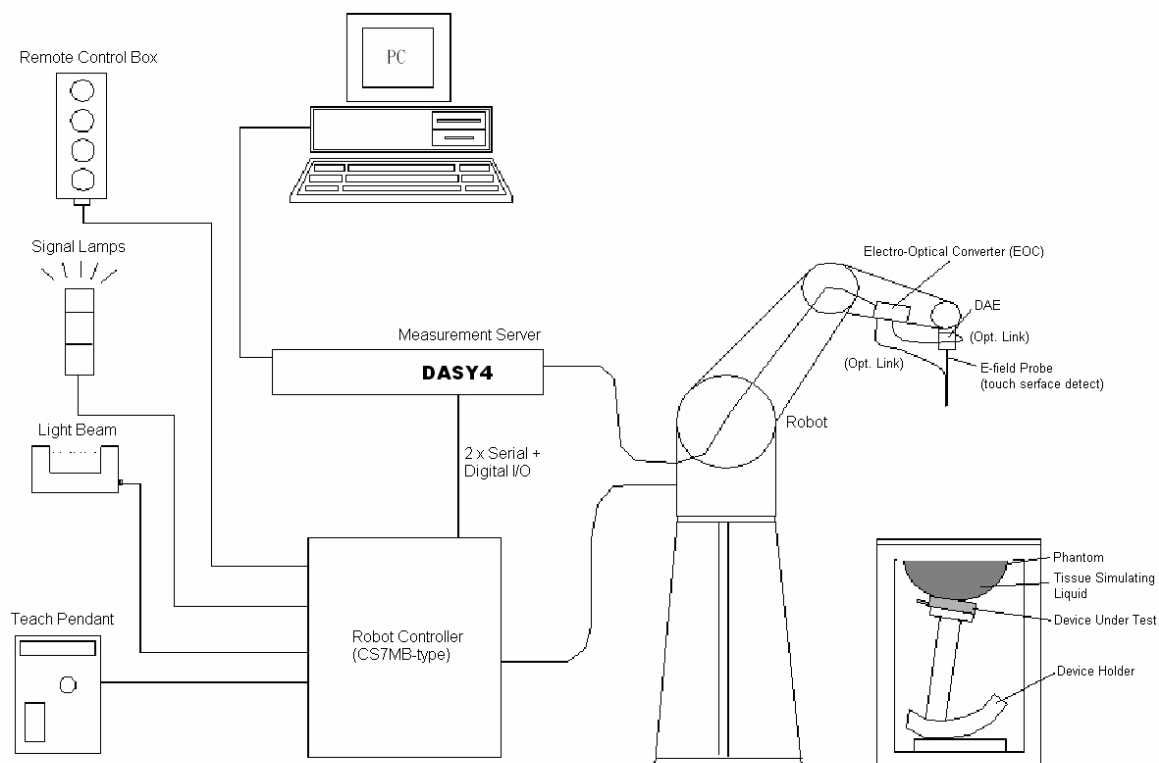


Fig. 5.1 DASY4 system



The DASY4 system for performance compliance tests is illustrated above graphically. This system consists of the following items:

- A standard high precision 6-axis robot with controller, a teach pendant and software
- A data acquisition electronic (DAE) attached to the robot arm extension
- A dosimetric probe equipped with an optical surface detector system
- The electro-optical converter (ECO) performs the conversion between optical and electrical signals
- A measurement server performs the time critical tasks such as signal filtering, control of the robot operation and fast movement interrupts.
- A probe alignment unit which improves the accuracy of the probe positioning
- A computer operating Windows XP
- DASY4 software
- Remote control with teach pendant and additional circuitry for robot safety such as warning lamps, etc.
- The SAM twin phantom
- A device holder
- Tissue simulating liquid
- Dipole for evaluating the proper functioning of the system

Some of the components are described in details in the following sub-sections.

5.1 DASY4 E-Field Probe System

The SAR measurement is conducted with the dosimetric probe ET3DV6 and ET3DV6 (manufactured by SPEAG). The probe is specially designed and calibrated for use in liquid with high permittivity. The dosimetric probe has special calibration in liquid at different frequency.

5.1.1 ET3DV6 E-Field Probe Specification

<ET3DV6 Probe>

Construction	<p>Symmetrical design with triangular core</p> <p>Built-in optical fiber for surface detection system</p> <p>Built-in shielding against static charges</p> <p>PEEK enclosure material (resistant to organic solvents)</p>
Calibration	<p>Simulating tissue at frequencies of 900MHz, 1.8GHz and 2.45GHz for brain and muscle (accuracy $\pm 8\%$)</p>
Frequency	<p>10 MHz to > 3 GHz</p>
Directivity	<p>± 0.2 dB in brain tissue (rotation around probe axis)</p> <p>± 0.4 dB in brain tissue (rotation perpendicular to probe axis)</p>
Dynamic Range	<p>5μ W/g to > 100 mW/g; Linearity: ± 0.2 dB</p>
Surface Detection	<p>± 0.2 mm repeatability in air and clear liquids on reflecting surface</p>
Dimensions	<p>Overall length: 330mm</p> <p>Tip length: 16mm</p> <p>Body diameter: 12mm</p> <p>Tip diameter: 6.8mm</p> <p>Distance from probe tip to dipole centers: 2.7mm</p>
Application	<p>General dosimetry up to 3GHz</p> <p>Compliance tests for mobile phones and Wireless LAN</p> <p>Fast automatic scanning in arbitrary phantoms</p>



Fig. 5.2 Probe setup on robot

**<EX3DV3 Probe>**

Construction	Symmetrical design with triangular core Built-in shielding against static charges PEEK enclosure material (resistant to organic solvents)
Calibration	Basic Broad Band Calibration in air: 10-3000 MHz Conversion Factors (CF) for HSL 900 and HSL 1800 Additional CF for other liquids and frequencies upon request
Frequency	10 MHz to > 6 GHz; Linearity: ± 0.2 dB (30 MHz to 3 GHz)
Directivity	± 0.3 dB in HSL (rotation around probe axis) ± 0.5 dB in tissue material (rotation normal to probe axis)
Dynamic Range	10 μ W/g to > 100 mW/g; Linearity: ± 0.2 dB (noise: typically < 1 μ W/g)
Dimensions	Overall length: 330 mm (Tip: 20 mm) Tip diameter: 2.5 mm (Body: 12 mm) Typical distance from probe tip to dipole centers: 1 mm
Application	High precision dosimetric measurements in any exposure scenario (e.g., very strong gradient fields). Only probe which enables compliance testing for frequencies up to 6 GHz with precision of better 30%.

**Fig. 5.2 EX3DV3 E-field Probe****5.1.2 ET3DV6 & EX3DV3 E-Field Probe Calibration**

Each probe needs to be calibrated according to a dosimetric assessment procedure with accuracy better than $\pm 10\%$. The spherical isotropy shall be evaluated and within ± 0.25 dB. The sensitivity parameters (NormX, NormY, and NormZ), the diode compression parameter (DCP) and the conversion factor (ConvF) of the probe are tested. The calibration data are as below:



<EX3DV3 Probe>

Sensitivity	X axis : 0.655 μ V		Y axis : 0.675 μ V		Z axis : 0.598 μ V
Diode compression point	X axis : 97 mV		Y axis : 97 mV		Z axis : 97 mV
Conversion factor (Body)	Frequency (MHz)	X axis	Y axis		Z axis
	5100~5300	4.35	4.35		4.35
	5400~5600	4.02	4.02		4.02
	5700~5900	4.09	4.09		4.09
Boundary effect (Body)	Frequency (MHz)	Alpha	Depth		
	5100~5300	0.47	1.25		
	5400~5600	0.46	1.14		
	5700~5900	0.52	0.92		

<ET3DV6 Probe>

Sensitivity	X axis : 1.73 μ V		Y axis : 1.67 μ V		Z axis : 1.70 μ V
Diode compression point	X axis : 95 mV		Y axis : 101 mV		Z axis : 93 mV
Conversion factor (Body)	Frequency (MHz)	X axis	Y axis		Z axis
	2350~2550	4.11	4.11		4.11
Boundary effect (Body)	Frequency (MHz)	Alpha	Depth		
	2350~2550	0.60	1.70		

NOTE: The probe parameters have been calibrated by the SPEAG.



5.2 DATA Acquisition Electronics (DAE)

The data acquisition electronics (DAE4) consists of a highly sensitive electrometer-grade preamplifier with auto-zeroing, a channel and gain-switching multiplexer, a fast 16 bit AD-converter and a command decoder and control logic unit. Transmission to the measurement server is accomplished through an optical downlink for data and status information as well as an optical uplink for commands and the clock.

The mechanical probe mounting device includes two different sensor systems for frontal and sideways probe contacts. They are used for mechanical surface detection and probe collision detection.

The input impedance of the DAE4 is 200M Ohm; the inputs are symmetrical and floating. Common mode rejection is above 80dB.



5.3 Robot

The DASY4 system uses the high precision robots RX90BL type out of the newer series from Stäubli SA (France). For the 6-axis controller DASYS system, the CS7MB robot controller version from Stäubli is used. The RX robot series have many features that are important for our application:

- High precision (repeatability 0.02 mm)
- High reliability (industrial design)
- Jerk-free straight movements
- Low ELF interference (the closed metallic construction shields against motor control fields)
- 6-axis controller

5.4 Measurement Server

The DASY4 measurement server is based on a PC/104 CPU board with
166 MHz CPU
32 MB chipset and
64 MB RAM.

Communication with
the DAE4 electronic box
the 16-bit AD-converter system for optical detection and digital I/O interface.

The measurement server performs all the real-time data evaluation for field measurements and surface detection, controls robot movements and handles safety operations.

5.5 SAM Twin Phantom

The SAM twin phantom is a fiberglass shell phantom with 2mm shell thickness (except the ear region where shell thickness increases to 6mm). It has three measurement areas:

- Left head
- Right head
- Flat phantom

The bottom plate contains three pair of bolts for locking the device holder. The device holder positions are adjusted to the standard measurement positions in the three sections.



A white cover is provided to tap the phantom during off-periods to prevent water evaporation and changes in the liquid parameters.

On the phantom top, three reference markers are provided to identify the phantom position with respect to the robot.

The phantom can be used with the following tissue simulating liquids:

*Water-sugar based liquid

*Glycol based liquids

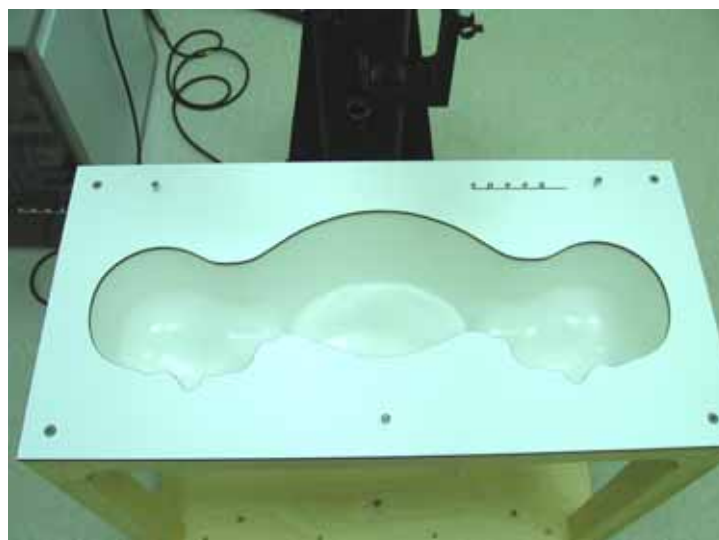


Fig. 5.3 Top view of twin phantom



Fig. 5.4 Bottom view of twin phantom

5.6 Data Storage and Evaluation

5.6.1 Data Storage

The DASY4 software stores the assessed data from the data acquisition electronics as raw data (in microvolt readings from the probe sensors), together with all the necessary software parameters for the data evaluation (probe calibration data, liquid parameters and device frequency and modulation data) in measurement files with the extension .DA4. The postprocessing software evaluates the desired unit and format for output each time the data is visualized or exported. This allows verification of the complete software setup even after the measurement and allows correction of erroneous parameter settings. For example, if a measurement has been performed with an incorrect crest factor parameter in the device setup, the parameter can be corrected afterwards and the data can be reevaluated.

The measured data can be visualized or exported in different units or formats, depending on the selected probe type (e.g., [V/m], [A/m], [mW/g]). Some of these units are not available in certain situations or give meaningless results, e.g., a SAR-output in a loseless media, will always be zero. Raw data can also be exported to perform the evaluation with other software packages.

5.6.2 Data Evaluation

The DASY4 postprocessing software (SEMCAD) automatically executes the following procedures to calculate the field units from the microvolt readings at the probe connector. The parameters used in the evaluation are stored in the configuration modules of the software :

Probe parameters :	- Sensitivity	$\text{Norm}_i, a_{i0}, a_{i1}, a_{i2}$
	- Conversion factor	ConvF_i
	- Diode compression point	dcp_i
Device parameters :	- Frequency	f
	- Crest factor	cf
Media parameters :	- Conductivity	
	- Density	

These parameters must be set correctly in the software. They can be found in the component documents or they can be imported into the software from the configuration files issued for the DASY components. In the direct measuring mode of the multimeter option, the parameters of the actual system setup are used. In the scan visualization and export modes, the parameters stored in the corresponding document files are used.

The first step of the evaluation is a linearization of the filtered input signal to account for the compression characteristics of the detector diode. The compensation depends on the input signal, the diode type and the DC-transmission factor from the diode to the evaluation electronics. If the exciting field is pulsed, the crest factor of the signal must be known to correctly compensate for peak power. The formula for each channel



can be given as :

$$V_i = U_i + U_i^2 \cdot \frac{cf}{dcp_i}$$

with V_i = compensated signal of channel i ($i = x, y, z$)
 U_i = input signal of channel i ($i = x, y, z$)
 cf = crest factor of exciting field (DASY parameter)
 dcp_i = diode compression point (DASY parameter)

From the compensated input signals, the primary field data for each channel can be evaluated :

$$\text{E-field probes : } E_i = \sqrt{\frac{V_i}{\text{Norm}_i \text{ConvF}}}$$

$$\text{H-field probes : } H_i = \sqrt{V_i \frac{a_{i0} + a_{i1}f + a_{i2}f^2}{f}}$$

with V_i = compensated signal of channel i ($i = x, y, z$)
 Norm_i = sensor sensitivity of channel i ($i = x, y, z$)
 $\mu \text{ V}/(\text{V}/\text{m})^2$ for E-field Probes
 ConvF = sensitivity enhancement in solution
 a_{ij} = sensor sensitivity factors for H-field probes
 f = carrier frequency [GHz]
 E_i = electric field strength of channel i in V/m
 H_i = magnetic field strength of channel i in A/m

The RSS value of the field components gives the total field strength (Hermitian magnitude) :

$$E_{tot} = \sqrt{E_x^2 + E_y^2 + E_z^2}$$

The primary field data are used to calculate the derived field units.

$$\text{SAR} = E_{tot}^2 \cdot \frac{\sigma}{\rho \cdot 1000}$$

with SAR = local specific absorption rate in mW/g
 E_{tot} = total field strength in V/m
 σ = conductivity in [mho/m] or [Siemens/m]
 ρ = equivalent tissue density in g/cm³



* Note that the density is set to 1, to account for actual head tissue density rather than the density of the tissue simulating liquid.

The power flow density is calculated assuming the excitation field to be a free space field.

$$P_{pwe} = \frac{E_{tot}^2}{3770} \quad \text{or} \quad P_{pwe} = H_{tot}^2 \cdot 37.7$$

with P_{pwe} = equivalent power density of a plane wave in mW/cm²
 E_{tot} = total electric field strength in V/m
 H_{tot} = total magnetic field strength in A/m

**5.7 Test Equipment List**

Manufacture	Name of Equipment	Type/Model	Serial Number	Calibration	
				Last Cal.	Due Date
SPEAG	Dosimetric E-Filed Probe	ET3DV6	1788	Sep 19, 2006	Sep. 19, 2007
SPEAG	Dosimetric E-Filed Probe	EX3DV3	3514	Feb. 17, 2006	Feb. 17, 2008
SPEAG	2450MHz System Validation Kit	D2450V2	736	Jul. 12, 2005	Jul. 12, 2007
SPEAG	5GHz System Validation Kit	D5GHzV2	1006	Feb. 10, 2006	Feb. 10, 2008
SPEAG	Data Acquisition Electronics	DAE3	577	Nov. 21, 2006	Nov. 21, 2007
SPEAG	Device Holder	N/A	N/A	NCR	NCR
SPEAG	Phantom	QD 000 P40 C	TP-1150	NCR	NCR
SPEAG	Robot	Staubli RX90BL	F03/5W15A1/A/01	NCR	NCR
SPEAG	Software	DASY4 V4.7 Build 53	N/A	NCR	NCR
SPEAG	Software	SEMCAD V1.8 Build 172	N/A	NCR	NCR
SPEAG	Measurement Server	SE UMS 001 BA	1021	NCR	NCR
Agilent	ENA Series Network Analyzer	E5071B	MY42403579	Mar. 16, 2006	Mar. 16, 2007
Agilent	ENA Series Network Analyzer	E5071C	MY46100746	Feb. 21, 2007	Feb. 21, 2008
Agilent	Dielectric Probe Kit	85070D	US01440205	NCR	NCR
Agilent	Dual Directional Coupler	778D	50422	NCR	NCR
Agilent	Power Amplifier	8449B	3008A01917	NCR	NCR
Agilent	Power Meter	E4416A	GB41292344	Feb. 08, 2007	Feb. 08, 2008
Agilent	Power Sensor	E9327A	US40441548	Feb. 08, 2007	Feb. 08, 2008
Agilent	Signal Generator	E8247C	MY43320596	Mar. 01, 2006	Mar. 01, 2008
R&S	Radio Communication Tester	CMU200	105513	Jul. 25, 2006	Jul. 25, 2007

Table 5.1 Test Equipment List

6. Tissue Simulating Liquids

For the measurement of the field distribution inside the SAM phantom with DASY4, the phantom must be filled with around 25 liters of homogeneous body tissue simulating liquid. The liquid height from the bottom of the phantom body is 15.2 centimeters.

The dielectric parameters of the liquids were verified prior to the SAR evaluation using an Agilent 85070D Dielectric Probe Kit and an Agilent Network Analyzer.

Table 6.1 shows the measuring results for muscle simulating liquid.

Bands	Frequency(MHz)	Permittivity (ϵ_r)	Conductivity (σ)	Measurement date
2400 ~ 2483.5 MHz	2412	52.5	1.90	Feb. 14, 2007
	2437	52.4	1.94	
	2462	52.4	1.96	
5150 ~ 5250 MHz <Band I>	5180	48.5	5.19	Mar. 17, 2007
	5260	48.5	5.19	
	5300	48.5	5.19	
5725 ~ 5825 MHz <Band III>	5745	47.8	5.76	Mar. 17, 2007
	5785	47.7	5.88	
	5825	47.7	5.88	

Table 6.2

The measuring data are consistent with $\epsilon_r = 52.7 \pm 5\%$ and $\sigma = 1.95 \pm 5\%$ for 2400~2483.5, $\epsilon_r = 49.0 \pm 5\%$ and $\sigma = 5.30 \pm 5\%$ for 5150~5250 and $\epsilon_r = 48.2 \pm 5\%$ and $\sigma = 6.00 \pm 5\%$ for 5725~5825.



Fig. 6.1



7. Uncertainty Assessment

The component of uncertainty may generally be categorized according to the methods used to evaluate them. The evaluation of uncertainty by the statistical analysis of a series of observations is termed a Type A evaluation of uncertainty. The evaluation of uncertainty by means other than the statistical analysis of a series of observation is termed a Type B evaluation of uncertainty. Each component of uncertainty, however evaluated, is represented by an estimated standard deviation, termed standard uncertainty, which is determined by the positive square root of the estimated variance.

A Type A evaluation of standard uncertainty may be based on any valid statistical method for treating data. This includes calculating the standard deviation of the mean of a series of independent observations; using the method of least squares to fit a curve to the data in order to estimate the parameter of the curve and their standard deviations; or carrying out an analysis of variance in order to identify and quantify random effects in certain kinds of measurement.

A type B evaluation of standard uncertainty is typically based on scientific judgment using all of the relevant information available. These may include previous measurement data, experience and knowledge of the behavior and properties of relevant materials and instruments, manufacture's specification, data provided in calibration reports and uncertainties assigned to reference data taken from handbooks. Broadly speaking, the uncertainty is either obtained from an outdoor source or obtained from an assumed distribution, such as the normal distribution, rectangular or triangular distributions indicated in Table 7.1

Uncertainty Distributions	Normal	Rectangular	Triangular	U-shape
Multiplying factor^(a)	1/k ^(b)	1/ 3	1/ 6	1/ 2

(a) standard uncertainty is determined as the product of the multiplying factor and the estimated range of variations in the measured quantity

(b) is the coverage factor

Table 7.1

The combined standard uncertainty of the measurement result represents the estimated standard deviation of the result. It is obtained by combining the individual standard uncertainties of both Type A and Type B evaluation using the usual “root-sum-squares” (RSS) methods of combining standard deviations by taking the positive square root of the estimated variances.

Expanded uncertainty is a measure of uncertainty that defines an interval about the measurement result within which the measured value is confidently believed to lie. It is obtained by multiplying the combined standard uncertainty by a coverage factor. Typically, the coverage factor ranges from 2 to 3. Using a coverage factor allows the true value of a measured quantity to be specified with a defined probability within the specified uncertainty range. For purpose of this document, a coverage factor two is used, which corresponds to confidence interval of about 95 %. The DASY4 uncertainty Budget is showed in Table 7.2 and Table 7.3.



Error Description	Uncertainty Value \pm %	Probability Distribution	Divisor	C_{lg}	Standard Unc. (1-g)	v_i or V_{eff}
Measurement System						
Probe Calibration	± 4.8	Normal	1	1	± 4.8	
Axial Isotropy	± 4.7	Rectangular	$\sqrt{3}$	0.7	± 1.9	
Hemispherical Isotropy	± 9.6	Rectangular	$\sqrt{3}$	0.7	± 3.9	
Boundary Effect	± 1.0	Rectangular	$\sqrt{3}$	1	± 0.6	
Linearity	± 4.7	Rectangular	$\sqrt{3}$	1	± 2.7	
System Detection Limit	± 1.0	Rectangular	$\sqrt{3}$	1	± 0.6	
Readout Electronics	± 1.0	Normal	1	1	± 1.0	
Response Time	± 0.8	Rectangular	$\sqrt{3}$	1	± 0.5	
Integration time	± 2.6	Rectangular	$\sqrt{3}$	1	± 1.5	
RF Ambient Conditions	± 3.0	Rectangular	$\sqrt{3}$	1	± 1.7	
Probe Positioner Mech. Tolerance	± 0.4	Rectangular	$\sqrt{3}$	1	± 0.2	
Probe Positioning with respect to Phantom Shell	± 2.9	Rectangular	$\sqrt{3}$	1	± 1.7	
Extrapolation and Interpolation Algorithms for Max. SAR Evaluation	± 1.0	Rectangular	$\sqrt{3}$	1	± 0.6	
Test sample Related						
Test sample Positioning	± 2.9	Normal	1	1	± 2.9	145
Device Holder Uncertainty	± 3.6	Normal	1	1	± 3.6	5
Output Power Variation-SAR drift measurement	± 5.0	Rectangular	$\sqrt{3}$	1	± 2.9	
Phantom and Setup						
Phantom uncertainty(Including shape and thickness tolerances)	± 4.0	Rectangular	$\sqrt{3}$	1	± 2.3	
Liquid Conductivity Target tolerance	± 5.0	Rectangular	$\sqrt{3}$	0.64	± 1.8	
Liquid Conductivity measurement uncertainty	± 2.5	Normal	1	0.64	± 1.6	
Liquid Permittivity Target tolerance	± 5.0	Rectangular	$\sqrt{3}$	0.6	± 1.7	
Liquid Permittivity measurement uncertainty	± 2.5	Normal	1	0.6	± 1.5	
Combined standard uncertainty					± 10.3	330
Coverage Factor for 95 %		<u>K=2</u>				
Expanded uncertainty (Coverage factor = 2)			Normal (k=2) 27		± 20.6	

Table 7.2 Uncertainty Budget of DASY for 2.4GHz Band



Error Description	Uncertainty Value	Probability Distribution	Divisor	C _i (1g)	Standard Unc. (1g)	V _i or V _{eff}
Measurement System						
Probe Calibration	±6.8 %	Normal	1	1	±6.8 %	
Axial Isotropy	±4.7 %	Rectangular	√3	0.7	±1.9 %	
Hemispherical Isotropy	±9.6 %	Rectangular	√3	0.7	±3.9 %	
Boundary Effect	±2.0 %	Rectangular	√3	1	±1.2 %	
Linearity	±4.7 %	Rectangular	√3	1	±2.7 %	
System Detection Limit	±1.0 %	Rectangular	√3	1	±0.6 %	
Readout Electronics	±0.3 %	Normal	1	1	±0.3 %	
Response Time	±0.8 %	Rectangular	√3	1	±0.5 %	
Integration Time	±2.6 %	Rectangular	√3	1	±1.5 %	
RF Ambient Noise	±3.0 %	Rectangular	√3	1	±1.7 %	
RF Ambient Reflections	±3.0 %	Rectangular	√3	1	±1.7 %	
Probe Positioner	±0.8 %	Rectangular	√3	1	±0.5 %	
Probe Positioning	±9.9 %	Rectangular	√3	1	±5.7 %	
Max. SAR Eval.	±4.0 %	Rectangular	√3	1	±2.3 %	
Test Sample Related						
Device Positioning	±2.9 %	Normal	1	1	±2.9 %	145
Device Holder	±3.6 %	Normal	1	1	±3.6 %	5
Power Drift	±5.0 %	Rectangular	√3	1	±2.9 %	
Phantom and Setup						
Phantom Uncertainty	±4.0 %	Rectangular	√3	1	±2.3 %	
Liquid Conductivity (target)	±5.0 %	Rectangular	√3	0.64	±1.8 %	
Liquid Conductivity (meas.)	±2.5 %	Normal	1	0.64	±1.6 %	
Liquid Permittivity (target)	±5.0 %	Rectangular	√3	0.6	±1.7 %	
Liquid Permittivity (meas.)	±2.5 %	Normal	1	0.6	±1.5 %	
Combined Std. Uncertainty					±12.9 %	330
Expanded STD Uncertainty					±25.9 %	

Table 7.3 Uncertainty Budget of DASY4 for 5GHz Band

8. SAR Measurement Evaluation

Each DASY system is equipped with one or more system validation kits. These units, together with the predefined measurement procedures within the DASY software, enable the user to conduct the system performance check and system validation. System validation kit includes a dipole, tripod holder to fix it underneath the flat phantom and a corresponding distance holder.

8.1 Purpose of System Performance check

The system performance check verifies that the system operates within its specifications. System and operator errors can be detected and corrected. It is recommended that the system performance check be performed prior to any usage of the system in order to guarantee reproducible results. The system performance check uses normal SAR measurements in a simplified setup with a well characterized source. This setup was selected to give a high sensitivity to all parameters that might fail or vary over time. The system check does not intend to replace the calibration of the components, but indicates situations where the system uncertainty is exceeded due to drift or failure.

8.2 System Setup

In the simplified setup for system evaluation, the DUT is replaced by a calibrated dipole and the power source is replaced by a continuous wave which comes from a signal generator at frequency 2450 MHz, 5200 MHz and 5800 Mhz. The calibrated dipole must be placed beneath the flat phantom section of the SAM twin phantom with the correct distance holder. The distance holder should touch the phantom surface with a light pressure at the reference marking and be oriented parallel to the long side of the phantom. The equipment setup is shown below:

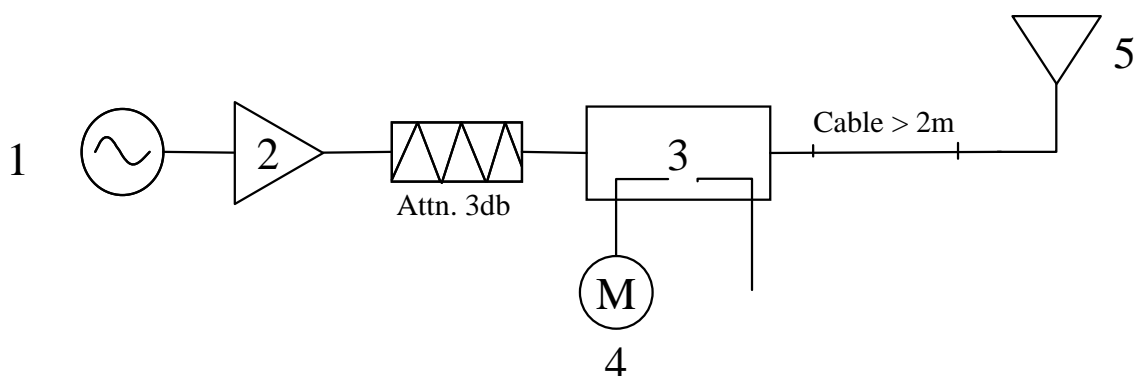


Fig. 8.1



1. Signal Generator
2. Amplifier
3. Directional Coupler
4. Power Meter
5. 2450 MHz and 5200 MHz and 5800 MHz Dipole

The output power on dipole port must be calibrated to 100 mW (20 dBm) before dipole is connected.



Fig 8.2 Dipole Setup



8.3 Validation Results

Comparing to the original SAR value provided by Speag, the validation data should within its specification of 10 %. Table 8.1 shows the target SAR and measured SAR after normalized to 1W input power.

		Target (W/kg)	Measurement data (W/kg)	Variation	Measurement date
802.11b/g (2450 MHz)	SAR (1g)	52.8	53.2	0.8 %	Feb. 14, 2007
	SAR (10g)	24.5	24.6	0.4 %	
802.11a Band I (5200 MHz)	SAR (1g)	73.7	71	-3.7 %	Mar. 17, 2007
	SAR (10g)	20.6	19.9	-3.4 %	
802.11a Band III (5800 MHz)	SAR (1g)	69.8	69	-1.1 %	Mar. 17, 2007
	SAR (10g)	19.7	18.9	-4.1 %	

Table 8.1

The table above indicates the system performance check can meet the variation criterion.

9. Description for DUT Testing Position

This DUT was tested in the position “Notebook Bottom Touch” shown in Fig. 9.1. The DUT faces to the phantom with 0 mm separation distance.



Fig. 9.1 Notebook Bottom Touch



10. Measurement Procedures

The measurement procedures are as follows:

- Using engineering software to transmit RF power continuously (continuous Tx) in the low channel
- Placing the DUT in the positions described in the last section
- Setting scan area, grid size and other setting on the DASY4 software
- Taking data for the low channel
- Repeat the previous steps for the middle and high channels.

According to the IEEE P1528 draft standard, the recommended procedure for assessing the peak spatial-average SAR value consists of the following steps:

- Power reference measurement
- Area scan
- Zoom scan
- Power reference measurement

10.1 Spatial Peak SAR Evaluation

The procedure for spatial peak SAR evaluation has been implemented according to the IEEE1528-2003 standard. It can be conducted for 1g and 10g, as well as for user-specific masses. The DASY4 software includes all numerical procedures necessary to evaluate the spatial peak SAR value.

Base on the Draft: SCC-34, SC-2, WG-2-Computational Dosimetry, P1528/D1.2 (Recommended Practice for Determining the Peak Spatial-Average Specific Absorption Rate (SAR) in the Human Head from Wireless Communications Devices: Measurement Techniques), a new algorithm has been implemented. The spatial-peak SAR can be computed over any required mass.

The base for the evaluation is a "cube" measurement. The measured volume must include the 1g and 10g cubes with the highest averaged SAR values. For that purpose, the center of the measured volume is aligned to the interpolated peak SAR value of a previously performed area scan.



The entire evaluation of the spatial peak values is performed within the postprocessing engine (SEMCAD). The system always gives the maximum values for the 1g and 10g cubes. The algorithm to find the cube with highest averaged SAR is divided into the following stages:

- extraction of the measured data (grid and values) from the Zoom Scan
- calculation of the SAR value at every measurement point based on all stored data (A/D values and measurement parameters)
- generation of a high-resolution mesh within the measured volume
- interpolation of all measured values from the measurement grid to the high-resolution grid
- extrapolation of the entire 3-D field distribution to the phantom surface over the distance from sensor to surface
- calculation of the averaged SAR within masses of 1g and 10g

10.2 Scan Procedures

First **Area Scan** is used to locate the approximate location(s) of the local peak SAR value(s). The measurement grid within an **Area Scan** is defined by the grid extent, grid step size and grid offset. Next, in order to determine the EM field distribution in a three-dimensional spatial extension, **Zoom Scan** is required. The **Zoom Scan** measures 5x5x7 points with step size 8, 8 and 5 mm. The **Zoom Scan** is performed around the highest E-field value to determine the averaged SAR-distribution over 1 g.

10.3 SAR Averaged Methods

In DASY4, the interpolation and extrapolation are both based on the modified Quadratic Shepard's method. The interpolation scheme combines a least-square fitted function method and a weighted average method which are the two basic types of computational interpolation and approximation.

Extrapolation routines are used to obtain SAR values between the lowest measurement points and the inner phantom surface. The extrapolation distance is determined by the surface detection distance and the probe sensor offset. The uncertainty increases with the extrapolation distance. To keep the uncertainty within 1% for the 1 g and 10 g cubes, the extrapolation distance should not be larger than 5 mm.



11. SAR Test Results

11.1 Notebook Bottom Touch with Main Antenna

Mode	Chan.	Freq (MHz)	Modulation type	Conducted Power (dBm)	Power Drift (dB)	Measured 1g SAR (W/kg)	Limits (W/Kg)	Results
802.11b	1	2412(Low)	CCK	18.02	0.159	0.00719	1.6	Pass
	6	2437(Mid)	CCK	17.96	-0.149	0.01	1.6	Pass
	11	2462(High)	CCK	18.12	-0.159	0.00763	1.6	Pass
802.11b with BT On	6	2437(Mid)	CCK	17.96	0.067	0.00716	1.6	Pass
802.11g	1	2412(Low)	OFDM	16.75	-	-	-	-
	6	2437(Mid)	OFDM	19.55	-0.054	0.00834	1.6	Pass
	11	2462(High)	OFDM	18.28	-	-	-	-
802.11a <Band I>	36	5180(Low)	OFDM	16.41	0.161	0.105	1.6	Pass
	40	5200(Mid)	OFDM	16.90	-0.123	0.109	1.6	Pass
	48	5240(High)	OFDM	16.93	-0.167	0.103	1.6	Pass
802.11a <Band I> with BT On	40	5200(Mid)	OFDM	16.90	0.173	0.097	1.6	Pass
802.11a <Band III>	149	5745(Low)	OFDM	18.03	-	-	-	-
	157	5785(Mid)	OFDM	18.09	0.183	0.112	1.6	Pass
	165	5825(High)	OFDM	17.95	-	-	-	-

11.2 Notebook Bottom Touch with Aux. Antenna

Mode	Chan.	Freq (MHz)	Modulation type	Conducted Power (dBm)	Power Drift (dB)	Measured 1g SAR (W/kg)	Limits (W/Kg)	Results
802.11b	1	2412(Low)	CCK	18.02	-	-	-	-
	6	2437(Mid)	CCK	17.96	-0.105	0.00926	1.6	Pass
	11	2462(High)	CCK	18.12	-	-	-	-
802.11g	1	2412(Low)	OFDM	16.75	-	-	-	-
	6	2437(Mid)	OFDM	19.55	-	-	-	-
	11	2462(High)	OFDM	18.28	-	-	-	-
802.11a <Band I>	36	5180(Low)	OFDM	16.41	-	-	-	-
	40	5200(Mid)	OFDM	16.90	0.173	0.097	1.6	Pass
	48	5240(High)	OFDM	16.93	-	-	-	-
802.11a <Band III>	149	5745(Low)	OFDM	18.03	0.146	0.1	1.6	Pass
	157	5785(Mid)	OFDM	18.09	0.092	0.143	1.6	Pass
	165	5825(High)	OFDM	17.95	0.172	0.124	1.6	Pass
802.11a <Band III> with BT On	157	5785(Mid)	OFDM	18.09	0.122	0.128	1.6	Pass

Test Engineer : John Tsai and Neil Chen



12. References

- [1] FCC 47 CFR Part 2 “Frequency Allocations and Radio Treaty Matters; General Rules and Regulations”
- [2] IEEE Std. P1528-2003, “Recommended Practice for Determining the Peak Spatial-Average Specific Absorption Rate (SAR) in the Human Head from Wireless Communications Devices: Measurement Techniques”, April 21, 2003.
- [3] Supplement C (Edition 01-01) to OET Bulletin 65 (Edition 97-01), “Additional Information for Evaluating Compliance of Mobile and Portable Devices with FCC Limits for Human Exposure to RF Emissions”, June 2001
- [4] IEEE Std. C95.3-2002, “IEEE Recommended Practice for the Measurement of Potentially Hazardous Electromagnetic Fields-RF and Microwave”, 2002
- [5] IEEE Std. C95.1-1999, “IEEE Standard for Safety Levels with Respect to Human Exposure to Radio Frequency Electromagnetic Fields, 3 kHz to 300 GHz”, 1999
- [6] Robert J. Renka, “Multivariate Interpolation Of Large Sets Of Scattered Data”, University of North Texas ACM Transactions on Mathematical Software, vol. 14, no. 2, June 1988, pp. 139-148
- [7] DAYS4 System Handbook



Appendix A - System Performance Check Data

Test Laboratory: Sporton International Inc. SAR Testing Lab

Date/Time: 2/14/2007 7:51:26 AM

System Check_Body_2450MHz_20070214

DUT: Dipole 2450 MHz

Communication System: CW; Frequency: 2450 MHz; Duty Cycle: 1:1

Medium: MSL_2450 Medium parameters used: $f = 2450$ MHz; $\sigma = 1.95$ mho/m; $\epsilon_r = 52.4$; $\rho = 1000$ kg/m³

Ambient Temperature : 22.9 °C; Liquid Temperature : 21.3 °C

DASY4 Configuration:

- Probe: ET3DV6 - SN1788; ConvF(4.11, 4.11, 4.11); Calibrated: 9/19/2006
- Sensor-Surface: 4mm (Mechanical And Optical Surface Detection) Sensor-Surface: 4mm (Mechanical Surface Detection)
- Electronics: DAE3 Sn577; Calibrated: 11/21/2006
- Phantom: SAM-B; Type: QD 000 P40 C; Serial: TP-1383
- Measurement SW: DASY4, V4.7 Build 44; Postprocessing SW: SEMCAD, V1.8 Build 171

Pin=100mW/Area Scan (91x91x1): Measurement grid: dx=10mm, dy=10mm

Maximum value of SAR (interpolated) = 6.15 mW/g

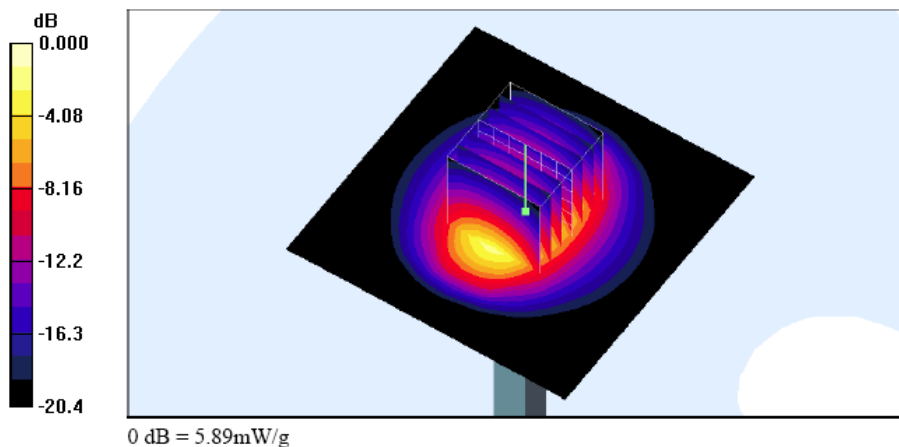
Pin=100mW/Zoom Scan (7x7x7)/Cube 0: Measurement grid: dx=5mm, dy=5mm, dz=5mm

Reference Value = 56.5 V/m; Power Drift = -0.013 dB

Peak SAR (extrapolated) = 12.5 W/kg

SAR(1 g) = 5.32 mW/g; SAR(10 g) = 2.46 mW/g

Maximum value of SAR (measured) = 5.89 mW/g





Test Laboratory: Sporton International Inc. SAR Testing Lab

Date/Time: 3/17/2007 10:46:15 PM

System Check_Body_5200MHz_20070317

DUT: Dipole 5GHz

Communication System: CW; Frequency: 5200 MHz; Duty Cycle: 1:1

Medium: MSL_5G Medium parameters used: $f = 5200 \text{ MHz}$; $\sigma = 5.19 \text{ mho/m}$; $\epsilon_r = 48.5$; $\rho = 1000 \text{ kg/m}^3$

Ambient Temperature : 23.1 °C; Liquid Temperature : 21.4 °C

DASY4 Configuration:

- Probe: EX3DV3 - SN3514; ConvF(4.31, 4.31, 4.31); Calibrated: 2/21/2007
- Sensor-Surface: 2mm (Mechanical Surface Detection)
- Electronics: DAE3 Sn577; Calibrated: 11/21/2006
- Phantom: SAM-B; Type: QD 000 P40 C; Serial: TP-1383
- Measurement SW: DASY4, V4.7 Build 53; Postprocessing SW: SEMCAD, V1.8 Build 172

Pin=100mW/Area Scan (91x91x1): Measurement grid: dx=10mm, dy=10mm

Maximum value of SAR (interpolated) = 14.5 mW/g

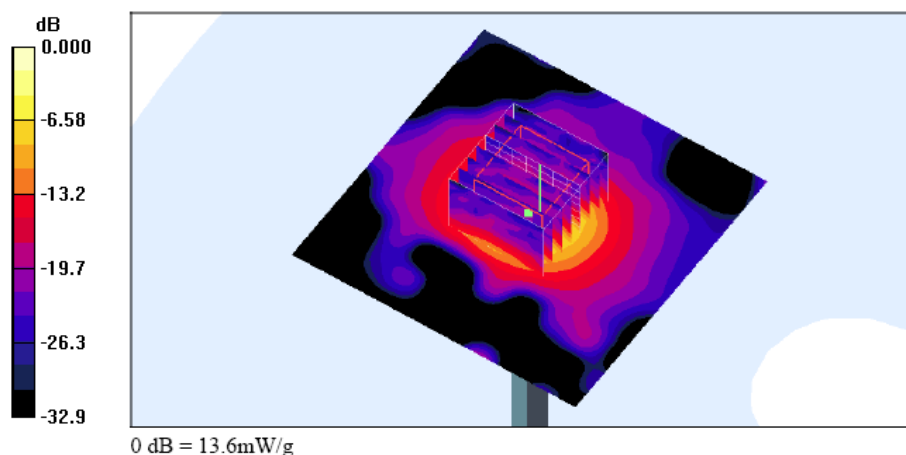
Pin=100mW/Zoom Scan (8x8x8)/Cube 0: Measurement grid: dx=4.3mm, dy=4.3mm, dz=3mm

Reference Value = 58.2 V/m; Power Drift = -0.019 dB

Peak SAR (extrapolated) = 27.5 W/kg

SAR(1 g) = 7.1 mW/g; SAR(10 g) = 1.99 mW/g

Maximum value of SAR (measured) = 13.6 mW/g





Test Laboratory: Sporton International Inc. SAR Testing Lab

Date/Time: 3/17/2007 10:13:12 PM

System Check_Body_5800MHz_20070317

DUT: Dipole 5GHz

Communication System: 802.11a; Frequency: 5800 MHz; Duty Cycle: 1:1

Medium: MSL_5G Medium parameters used: $f = 5800$ MHz; $\sigma = 5.88$ mho/m; $\epsilon_r = 47.7$; $\rho = 1000$ kg/m³

Ambient Temperature : 23.1 °C; Liquid Temperature : 21.4 °C

DASY4 Configuration:

- Probe: EX3DV3 - SN3514; ConvF(4.16, 4.16, 4.16); Calibrated: 2/21/2007
- Sensor-Surface: 2mm (Mechanical Surface Detection)
- Electronics: DAE3 Sn577; Calibrated: 11/21/2006
- Phantom: SAM-B; Type: QD 000 P40 C; Serial: TP-1383
- Measurement SW: DASY4, V4.7 Build 53; Postprocessing SW: SEMCAD, V1.8 Build 172

Pin=100mW/Area Scan (91x91x1): Measurement grid: dx=10mm, dy=10mm

Maximum value of SAR (interpolated) = 14.7 mW/g

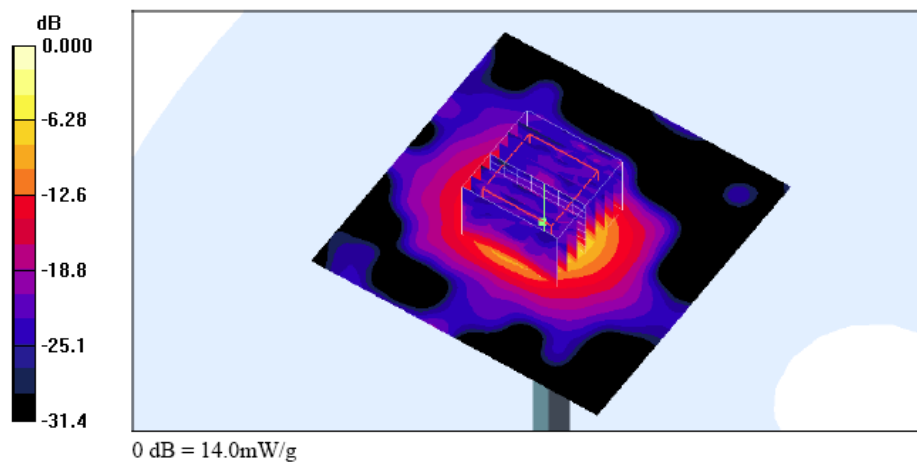
Pin=100mW/Zoom Scan (8x8x8)/Cube 0: Measurement grid: dx=4.3mm, dy=4.3mm, dz=3mm

Reference Value = 50.6 V/m; Power Drift = -0.019 dB

Peak SAR (extrapolated) = 33.9 W/kg

SAR(1 g) = 6.9 mW/g; SAR(10 g) = 1.89 mW/g

Maximum value of SAR (measured) = 14.0 mW/g





Appendix B - SAR Measurement Data

Test Laboratory: Sporton International Inc. SAR Testing Lab

Date/Time: 2/14/2007 9:04:51 AM

Body_802.11b Ch6_NB Bottom Touch_20070214_Main Ant

DUT: 602516

Communication System: 802.11b ; Frequency: 2437 MHz; Duty Cycle: 1:1

Medium: MSL_2450 Medium parameters used: $f = 2437$ MHz; $\sigma = 1.94$ mho/m; $\epsilon_r = 52.4$; $\rho = 1000$ kg/m³

Ambient Temperature : 22.7 °C; Liquid Temperature : 21.3 °C

DASY4 Configuration:

- Probe: ET3DV6 - SN1788; ConvF(4.11, 4.11, 4.11); Calibrated: 9/19/2006

- Sensor-Surface: 4mm (Mechanical And Optical Surface Detection)

- Electronics: DAE3 Sn577; Calibrated: 11/21/2006

- Phantom: SAM-B; Type: QD 000 P40 C; Serial: TP-1383

- Measurement SW: DASY4, V4.7 Build 44; Postprocessing SW: SEMCAD, V1.8 Build 171

Ch6/Area Scan (61x181x1): Measurement grid: dx=15mm, dy=15mm

Maximum value of SAR (interpolated) = 0.014 mW/g

Ch6/Zoom Scan (5x5x7)/Cube 1: Measurement grid: dx=8mm, dy=8mm, dz=5mm

Reference Value = 2.09 V/m; Power Drift = -0.149 dB

Peak SAR (extrapolated) = 0.029 W/kg

SAR(1 g) = 0.010 mW/g; SAR(10 g) = 0.00943 mW/g

Maximum value of SAR (measured) = 0.014 mW/g

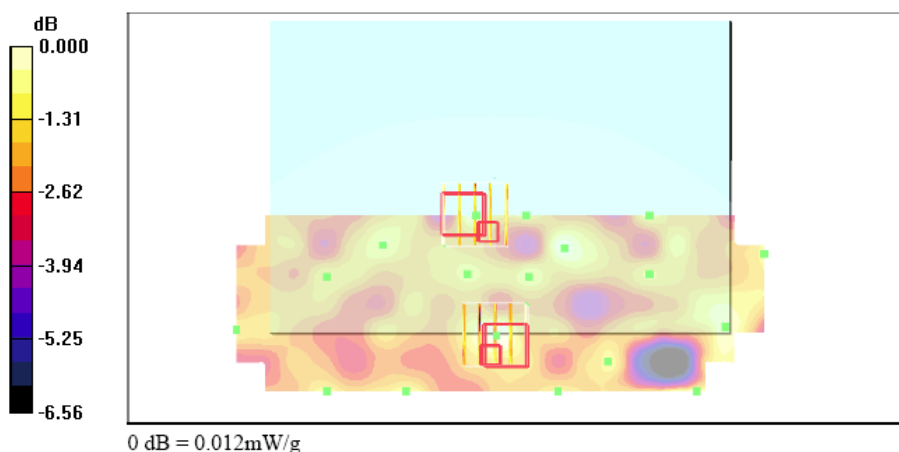
Ch6/Zoom Scan (5x5x7)/Cube 0: Measurement grid: dx=8mm, dy=8mm, dz=5mm

Reference Value = 2.09 V/m; Power Drift = -0.149 dB

Peak SAR (extrapolated) = 0.013 W/kg

SAR(1 g) = 0.00978 mW/g; SAR(10 g) = 0.00852 mW/g

Maximum value of SAR (measured) = 0.012 mW/g





Test Laboratory: Sporton International Inc. SAR Testing Lab

Date/Time: 2/14/2007 10:18:43 AM

Body_802.11b Ch6_NB Bottom Touch_20070214_Aux Ant

DUT: 602516

Communication System: 802.11b ; Frequency: 2437 MHz; Duty Cycle: 1:1

Medium: MSL_2450 Medium parameters used: $f = 2437$ MHz; $\sigma = 1.94$ mho/m; $\epsilon_r = 52.4$; $\rho = 1000$ kg/m³

Ambient Temperature : 22.4 °C ; Liquid Temperature : 21.3 °C

DASY4 Configuration:

- Probe: ET3DV6 - SN1788; ConvF(4.11, 4.11, 4.11); Calibrated: 9/19/2006
- Sensor-Surface: 4mm (Mechanical And Optical Surface Detection)
- Electronics: DAE3 Sn577; Calibrated: 11/21/2006
- Phantom: SAM-B; Type: QD 000 P40 C; Serial: TP-1383
- Measurement SW: DASY4, V4.7 Build 44; Postprocessing SW: SEMCAD, V1.8 Build 171

Ch6/Area Scan (61x181x1): Measurement grid: dx=15mm, dy=15mm

Maximum value of SAR (interpolated) = 0.010 mW/g

Ch6/Zoom Scan (5x5x7)/Cube 0: Measurement grid: dx=8mm, dy=8mm, dz=5mm

Reference Value = 1.95 V/m; Power Drift = -0.105 dB

Peak SAR (extrapolated) = 0.011 W/kg

SAR(1 g) = 0.00926 mW/g; SAR(10 g) = 0.00813 mW/g

Maximum value of SAR (measured) = 0.011 mW/g

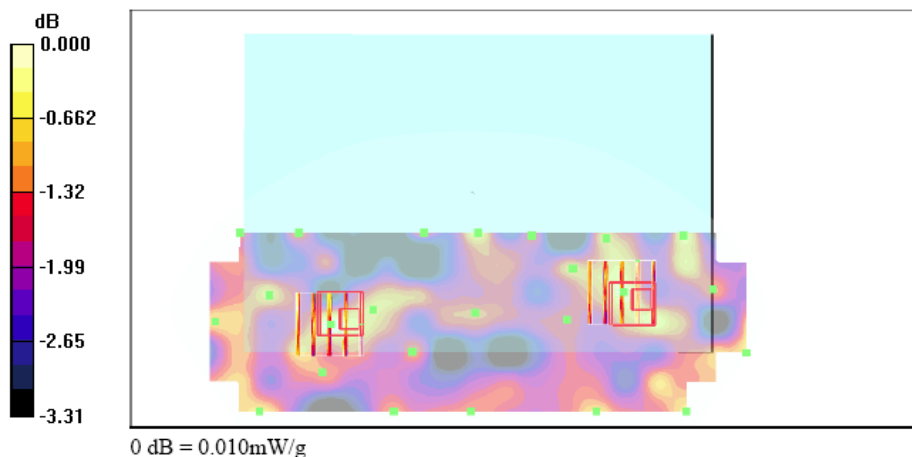
Ch6/Zoom Scan (5x5x7)/Cube 1: Measurement grid: dx=8mm, dy=8mm, dz=5mm

Reference Value = 1.95 V/m; Power Drift = -0.105 dB

Peak SAR (extrapolated) = 0.010 W/kg

SAR(1 g) = 0.00855 mW/g; SAR(10 g) = 0.00782 mW/g

Maximum value of SAR (measured) = 0.010 mW/g





Test Laboratory: Sporton International Inc. SAR Testing Lab

Date/Time: 2/14/2007 10:51:15 AM

Body_802.11g Ch6_NB Bottom Touch_20070214_Main Ant**DUT: 602516**

Communication System: 802.11g; Frequency: 2437 MHz; Duty Cycle: 1:1

Medium: MSL_2450 Medium parameters used: $f = 2437$ MHz; $\sigma = 1.94$ mho/m; $\epsilon_r = 52.4$; $\rho = 1000$ kg/m³

Ambient Temperature : 22.3 °C; Liquid Temperature : 21.3 °C

DASY4 Configuration:

- Probe: ET3DV6 - SN1788; ConvF(4.11, 4.11, 4.11); Calibrated: 9/19/2006
- Sensor-Surface: 4mm (Mechanical And Optical Surface Detection)
- Electronics: DAE3 Sn577; Calibrated: 11/21/2006
- Phantom: SAM-B; Type: QD 000 P40 C; Serial: TP-1383
- Measurement SW: DASY4, V4.7 Build 44; Postprocessing SW: SEMCAD, V1.8 Build 171

Ch6/Area Scan (61x181x1): Measurement grid: dx=15mm, dy=15mm

Maximum value of SAR (interpolated) = 0.009 mW/g

Ch6/Zoom Scan (5x5x7)/Cube 0: Measurement grid: dx=8mm, dy=8mm, dz=5mm

Reference Value = 1.75 V/m; Power Drift = -0.054 dB

Peak SAR (extrapolated) = 0.010 W/kg

SAR(1 g) = 0.00834 mW/g; SAR(10 g) = 0.00744 mW/g

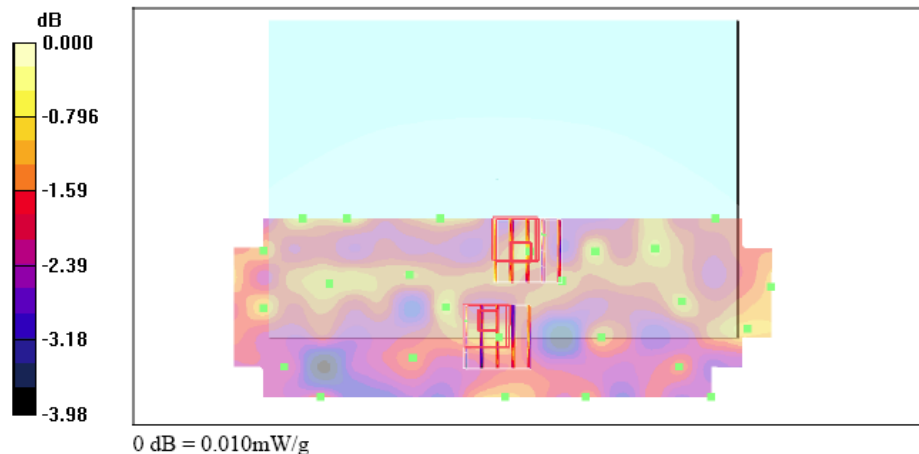
Maximum value of SAR (measured) = 0.010 mW/g

Ch6/Zoom Scan (5x5x7)/Cube 1: Measurement grid: dx=8mm, dy=8mm, dz=5mm

Reference Value = 1.75 V/m; Power Drift = -0.054 dB

Peak SAR (extrapolated) = 0.010 W/kg

SAR(1 g) = 0.00751 mW/g; SAR(10 g) = 0.0065 mW/g





Test Laboratory: Sporton International Inc. SAR Testing Lab

Date/Time: 2/14/2007 12:20:55 PM

Body_802.11b Ch6_NB Bottom Touch_20070214_Main Ant_Bluetooth On

DUT: 602516

Communication System: 802.11b ; Frequency: 2437 MHz;Duty Cycle: 1:1

Medium: MSL_2450 Medium parameters used: $f = 2437$ MHz; $\sigma = 1.94$ mho/m; $\epsilon_r = 52.4$; $\rho = 1000$ kg/m³

Ambient Temperature : 22.2 °C ; Liquid Temperature : 21.3 °C

DASY4 Configuration:

- Probe: ET3DV6 - SN1788; ConvF(4.11, 4.11, 4.11); Calibrated: 9/19/2006
- Sensor-Surface: 4mm (Mechanical And Optical Surface Detection)
- Electronics: DAE3 Sn577; Calibrated: 11/21/2006
- Phantom: SAM-B; Type: QD 000 P40 C; Serial: TP-1383
- Measurement SW: DASY4, V4.7 Build 44; Postprocessing SW: SEMCAD, V1.8 Build 171

Ch6/Area Scan (61x181x1): Measurement grid: dx=15mm, dy=15mm

Maximum value of SAR (interpolated) = 0.008 mW/g

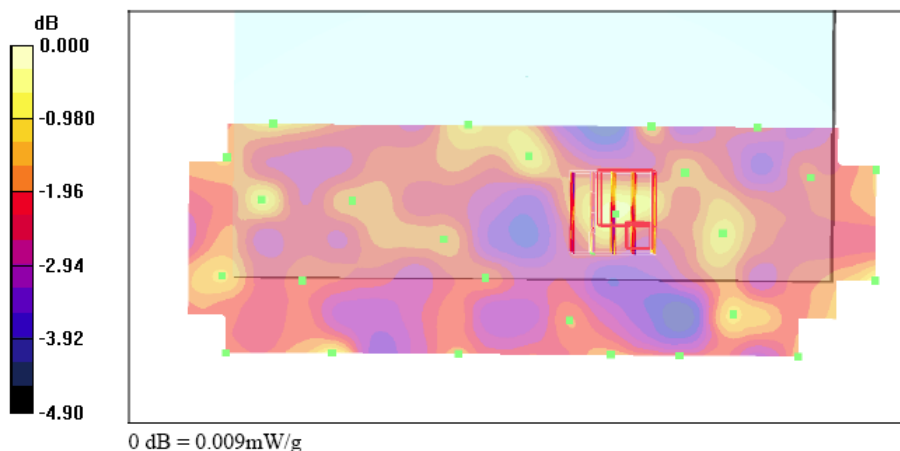
Ch6/Zoom Scan (5x5x7)/Cube 0: Measurement grid: dx=8mm, dy=8mm, dz=5mm

Reference Value = 1.57 V/m; Power Drift = 0.067 dB

Peak SAR (extrapolated) = 0.009 W/kg

SAR(1 g) = 0.00716 mW/g; SAR(10 g) = 0.00623 mW/g

Maximum value of SAR (measured) = 0.009 mW/g





Test Laboratory: Sporton International Inc. SAR Testing Lab

Date/Time: 3/17/2007 11:18:41 PM

Body_802.11a Ch40_NB Bottom Touch_20070317_Main Ant**DUT: 6O2516**

Communication System: 802.11a; Frequency: 5200 MHz; Duty Cycle: 1:1

Medium: MSL_5G Medium parameters used: $f = 5200 \text{ MHz}$; $\sigma = 5.19 \text{ mho/m}$; $\epsilon_r = 48.5$; $\rho = 1000 \text{ kg/m}^3$

Ambient Temperature : 23.5 °C; Liquid Temperature : 21.4 °C

DASY4 Configuration:

- Probe: EX3DV3 - SN3514; ConvF(4.31, 4.31, 4.31); Calibrated: 2/21/2007
- Sensor-Surface: 2mm (Mechanical Surface Detection)
- Electronics: DAE3 Sn577; Calibrated: 11/21/2006
- Phantom: SAM-B; Type: QD 000 P40 C; Serial: TP-1383
- Measurement SW: DASY4, V4.7 Build 53; Postprocessing SW: SEMCAD, V1.8 Build 172

Ch40/Area Scan (201x301x1): Measurement grid: $dx=10\text{mm}$, $dy=10\text{mm}$

Maximum value of SAR (interpolated) = 0.121 mW/g

Ch40/Zoom Scan (8x8x8)/Cube 0: Measurement grid: $dx=4.3\text{mm}$, $dy=4.3\text{mm}$, $dz=3\text{mm}$

Reference Value = 6.03 V/m; Power Drift = -0.123 dB

Peak SAR (extrapolated) = 0.121 W/kg

SAR(1 g) = 0.109 mW/g; SAR(10 g) = 0.103 mW/g

Maximum value of SAR (measured) = 0.121 mW/g

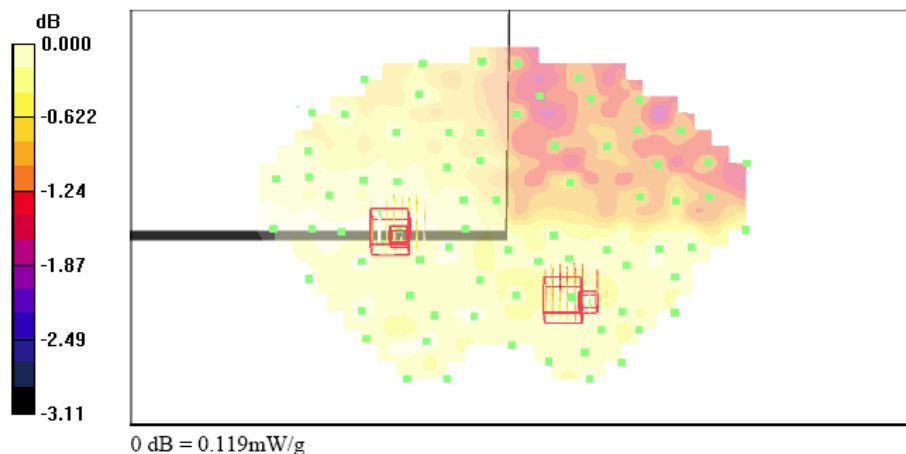
Ch40/Zoom Scan (8x8x8)/Cube 1: Measurement grid: $dx=4.3\text{mm}$, $dy=4.3\text{mm}$, $dz=3\text{mm}$

Reference Value = 6.03 V/m; Power Drift = -0.123 dB

Peak SAR (extrapolated) = 0.119 W/kg

SAR(1 g) = 0.102 mW/g; SAR(10 g) = 0.095 mW/g

Maximum value of SAR (measured) = 0.119 mW/g





Test Laboratory: Sporton International Inc. SAR Testing Lab

Date/Time: 3/18/2007 12:41:17 AM

Body_802.11a Ch40_NB Bottom Touch_20070317_Aux Ant

DUT: 602516

Communication System: 802.11a; Frequency: 5200 MHz; Duty Cycle: 1:1

Medium: MSL_5G Medium parameters used: $f = 5200$ MHz; $\sigma = 5.19$ mho/m; $\epsilon_r = 48.5$; $\rho = 1000$ kg/m³

Ambient Temperature : 23.2 °C; Liquid Temperature : 21.4 °C

DASY4 Configuration:

- Probe: EX3DV3 - SN3514; ConvF(4.31, 4.31, 4.31); Calibrated: 2/21/2007
- Sensor-Surface: 2mm (Mechanical Surface Detection)
- Electronics: DAE3 Sn577; Calibrated: 11/21/2006
- Phantom: SAM-B; Type: QD 000 P40 C; Serial: TP-1383
- Measurement SW: DASY4, V4.7 Build 53; Postprocessing SW: SEMCAD, V1.8 Build 172

Ch40/Area Scan (201x301x1): Measurement grid: dx=10mm, dy=10mm

Maximum value of SAR (interpolated) = 0.097 mW/g

Ch40/Zoom Scan (8x8x8)/Cube 1: Measurement grid: dx=4.3mm, dy=4.3mm, dz=3mm

Reference Value = 3.97 V/m; Power Drift = 0.173 dB

Peak SAR (extrapolated) = 0.121 W/kg

SAR(1 g) = 0.097 mW/g; SAR(10 g) = 0.091 mW/g

Maximum value of SAR (measured) = 0.121 mW/g

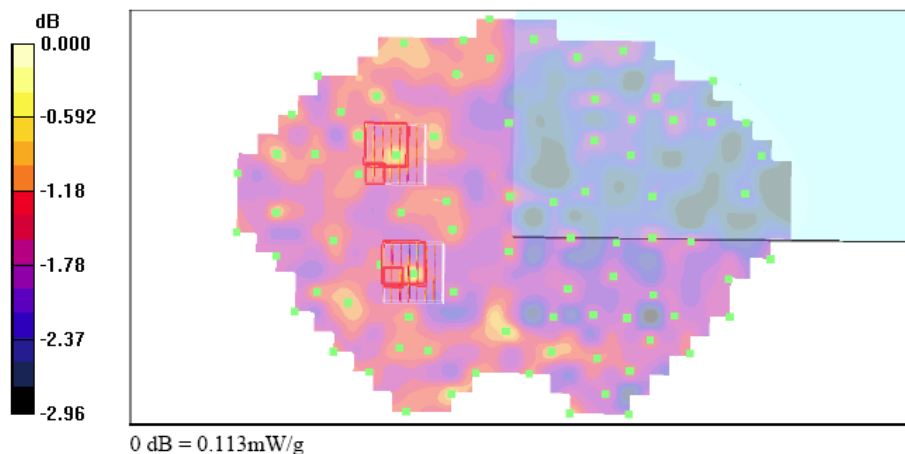
Ch40/Zoom Scan (8x8x8)/Cube 0: Measurement grid: dx=4.3mm, dy=4.3mm, dz=3mm

Reference Value = 3.97 V/m; Power Drift = 0.173 dB

Peak SAR (extrapolated) = 0.151 W/kg

SAR(1 g) = 0.095 mW/g; SAR(10 g) = 0.087 mW/g

Maximum value of SAR (measured) = 0.113 mW/g





Test Laboratory: Sporton International Inc. SAR Testing Lab

Date/Time: 3/18/2007 7:52:59 AM

Body_802.11a Ch157_NB Bottom Touch_20070317_Main Ant**DUT: 602516**

Communication System: 802.11a; Frequency: 5785 MHz; Duty Cycle: 1:1

Medium: MSL_5G Medium parameters used: $f = 5785$ MHz; $\sigma = 5.88$ mho/m; $\epsilon_r = 47.7$; $\rho = 1000$ kg/m³

Ambient Temperature : 23.1 °C; Liquid Temperature : 21.4 °C

DASY4 Configuration:

- Probe: EX3DV3 - SN3514; ConvF(4.16, 4.16, 4.16); Calibrated: 2/21/2007
- Sensor-Surface: 2mm (Mechanical Surface Detection)
- Electronics: DAE3 Sn577; Calibrated: 11/21/2006
- Phantom: SAM-B; Type: QD 000 P40 C; Serial: TP-1383
- Measurement SW: DASY4, V4.7 Build 53; Postprocessing SW: SEMCAD, V1.8 Build 172

Ch157/Area Scan (201x301x1): Measurement grid: dx=10mm, dy=10mm

Maximum value of SAR (interpolated) = 0.107 mW/g

Ch157/Zoom Scan (8x8x8)/Cube 0: Measurement grid: dx=4.3mm, dy=4.3mm, dz=3mm

Reference Value = 3.90 V/m; Power Drift = 0.183 dB

Peak SAR (extrapolated) = 0.120 W/kg

SAR(1 g) = 0.112 mW/g; SAR(10 g) = 0.106 mW/g

Maximum value of SAR (measured) = 0.120 mW/g

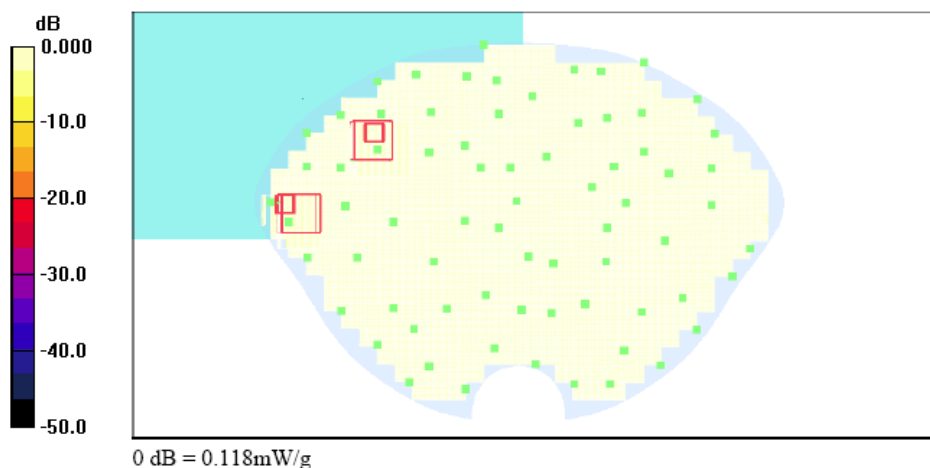
Ch157/Zoom Scan (8x8x8)/Cube 1: Measurement grid: dx=4.3mm, dy=4.3mm, dz=3mm

Reference Value = 3.90 V/m; Power Drift = 0.183 dB

Peak SAR (extrapolated) = 0.131 W/kg

SAR(1 g) = 0.107 mW/g; SAR(10 g) = 0.102 mW/g

Maximum value of SAR (measured) = 0.118 mW/g





Test Laboratory: Sporton International Inc. SAR Testing Lab

Date/Time: 3/18/2007 9:19:31 AM

Body_802.11a Ch157_NB Bottom Touch_20070317_Aux Ant**DUT: 602516**

Communication System: 802.11a; Frequency: 5785 MHz; Duty Cycle: 1:1

Medium: MSL_5G Medium parameters used: $f = 5785$ MHz; $\sigma = 5.88$ mho/m; $\epsilon_r = 47.7$; $\rho = 1000$ kg/m³

Ambient Temperature : 23.1 °C; Liquid Temperature : 21.4 °C

DASY4 Configuration:

- Probe: EX3DV3 - SN3514; ConvF(4.16, 4.16, 4.16); Calibrated: 2/21/2007
- Sensor-Surface: 2mm (Mechanical Surface Detection)
- Electronics: DAE3 Sn577; Calibrated: 11/21/2006
- Phantom: SAM-B; Type: QD 000 P40 C; Serial: TP-1383
- Measurement SW: DASY4, V4.7 Build 53; Postprocessing SW: SEMCAD, V1.8 Build 172

Ch157/Area Scan (201x301x1): Measurement grid: dx=10mm, dy=10mm

Maximum value of SAR (interpolated) = 0.101 mW/g

Ch157/Zoom Scan (8x8x8)/Cube 1: Measurement grid: dx=4.3mm, dy=4.3mm, dz=3mm

Reference Value = 4.02 V/m; Power Drift = 0.092 dB

Peak SAR (extrapolated) = 0.400 W/kg

SAR(1 g) = 0.143 mW/g; SAR(10 g) = n.a.

Maximum value of SAR (measured) = 0.130 mW/g

Ch157/Zoom Scan (8x8x8)/Cube 0: Measurement grid: dx=4.3mm, dy=4.3mm, dz=3mm

Reference Value = 4.02 V/m; Power Drift = 0.092 dB

Peak SAR (extrapolated) = 0.124 W/kg

SAR(1 g) = 0.114 mW/g; SAR(10 g) = 0.107 mW/g

Maximum value of SAR (measured) = 0.124 mW/g

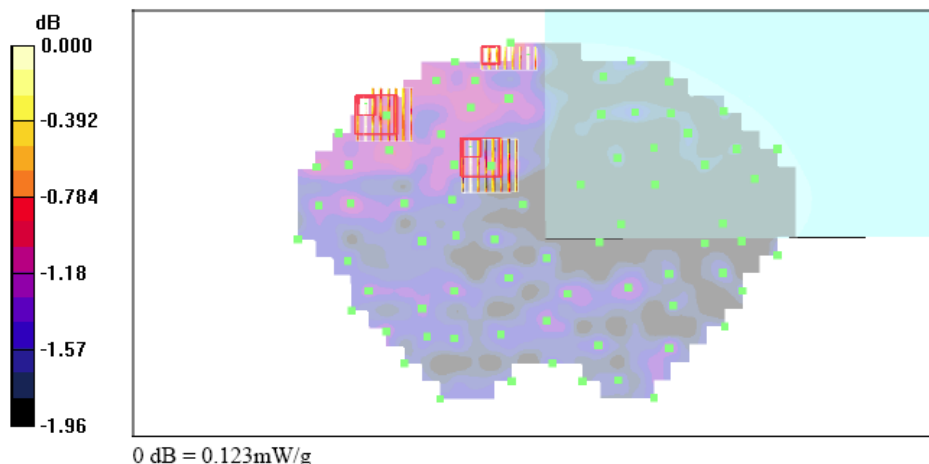
Ch157/Zoom Scan (8x8x8)/Cube 2: Measurement grid: dx=4.3mm, dy=4.3mm, dz=3mm

Reference Value = 4.02 V/m; Power Drift = 0.092 dB

Peak SAR (extrapolated) = 0.123 W/kg

SAR(1 g) = 0.114 mW/g; SAR(10 g) = 0.107 mW/g

Maximum value of SAR (measured) = 0.123 mW/g





Test Laboratory: Sporton International Inc. SAR Testing Lab

Date/Time: 3/18/2007 5:24:51 PM

Body_802.11a Ch157_NB Bottom Touch_20070317_Aux Ant_Bluetooth On**DUT: 602516**

Communication System: 802.11a; Frequency: 5785 MHz; Duty Cycle: 1:1

Medium: MSL_5G Medium parameters used: $f = 5785 \text{ MHz}$; $\sigma = 5.88 \text{ mho/m}$; $\epsilon_r = 47.7$; $\rho = 1000 \text{ kg/m}^3$

Ambient Temperature : 23.0 °C; Liquid Temperature : 21.5 °C

DASY4 Configuration:

- Probe: EX3DV3 - SN3514; ConvF(4.16, 4.16, 4.16); Calibrated: 2/21/2007
- Sensor-Surface: 2mm (Mechanical Surface Detection)
- Electronics: DAE3 Sn577; Calibrated: 11/21/2006
- Phantom: SAM-B; Type: QD 000 P40 C; Serial: TP-1383
- Measurement SW: DASY4, V4.7 Build 53; Postprocessing SW: SEMCAD, V1.8 Build 172

Ch157/Area Scan (201x301x1): Measurement grid: $dx=10\text{mm}$, $dy=10\text{mm}$

Maximum value of SAR (interpolated) = 0.117 mW/g

Ch157/Zoom Scan (8x8x8)/Cube 0: Measurement grid: $dx=4.3\text{mm}$, $dy=4.3\text{mm}$, $dz=3\text{mm}$

Reference Value = 4.16 V/m; Power Drift = 0.122 dB

Peak SAR (extrapolated) = 0.139 W/kg

SAR(1 g) = 0.128 mW/g; SAR(10 g) = 0.121 mW/g

Maximum value of SAR (measured) = 0.139 mW/g

Ch157/Zoom Scan (8x8x8)/Cube 1: Measurement grid: $dx=4.3\text{mm}$, $dy=4.3\text{mm}$, $dz=3\text{mm}$

Reference Value = 4.16 V/m; Power Drift = 0.122 dB

Peak SAR (extrapolated) = 0.141 W/kg

SAR(1 g) = 0.128 mW/g; SAR(10 g) = n.a.

Maximum value of SAR (measured) = 0.141 mW/g

Ch157/Zoom Scan (8x8x8)/Cube 2: Measurement grid: $dx=4.3\text{mm}$, $dy=4.3\text{mm}$, $dz=3\text{mm}$

Reference Value = 4.16 V/m; Power Drift = 0.122 dB

Peak SAR (extrapolated) = 0.141 W/kg

SAR(1 g) = 0.127 mW/g; SAR(10 g) = n.a.

Maximum value of SAR (measured) = 0.141 mW/g

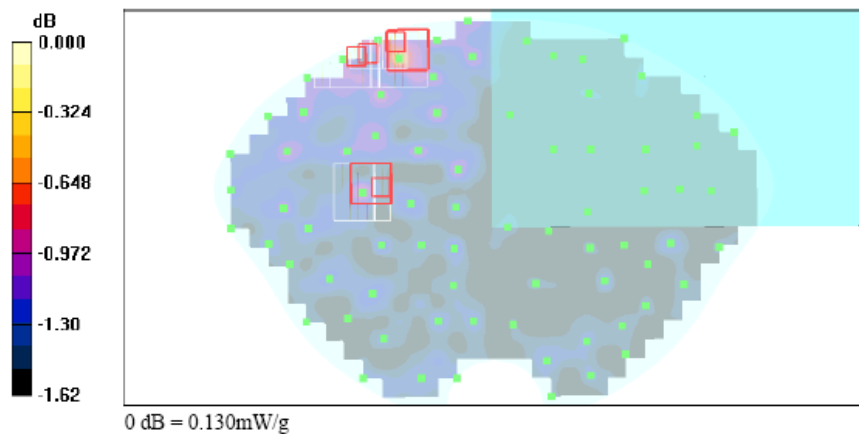
Ch157/Zoom Scan (8x8x8)/Cube 3: Measurement grid: $dx=4.3\text{mm}$, $dy=4.3\text{mm}$, $dz=3\text{mm}$

Reference Value = 4.16 V/m; Power Drift = 0.122 dB

Peak SAR (extrapolated) = 0.130 W/kg

SAR(1 g) = 0.118 mW/g; SAR(10 g) = 0.113 mW/g

Maximum value of SAR (measured) = 0.130 mW/g





Test Laboratory: Sporton International Inc. SAR Testing Lab

Date/Time: 2/14/2007 12:20:55 PM

Body_802.11b Ch6_NB Bottom Touch_20070214_Main Ant_Bluetooth On_2D**DUT: 602516**

Communication System: 802.11b ; Frequency: 2437 MHz; Duty Cycle: 1:1

Medium: MSL_2450 Medium parameters used: $f = 2437$ MHz; $\sigma = 1.94$ mho/m; $\epsilon_r = 52.4$; $\rho = 1000$ kg/m³

Ambient Temperature : 22.2 °C; Liquid Temperature : 21.3 °C

DASY4 Configuration:

- Probe: ET3DV6 - SN1788; ConvF(4.11, 4.11, 4.11); Calibrated: 9/19/2006
- Sensor-Surface: 4mm (Mechanical And Optical Surface Detection)
- Electronics: DAE3 Sn577; Calibrated: 11/21/2006
- Phantom: SAM-B; Type: QD 000 P40 C; Serial: TP-1383
- Measurement SW: DASY4, V4.7 Build 44; Postprocessing SW: SEMCAD, V1.8 Build 171

Ch6/Area Scan (61x181x1): Measurement grid: dx=15mm, dy=15mm

Maximum value of SAR (interpolated) = 0.008 mW/g

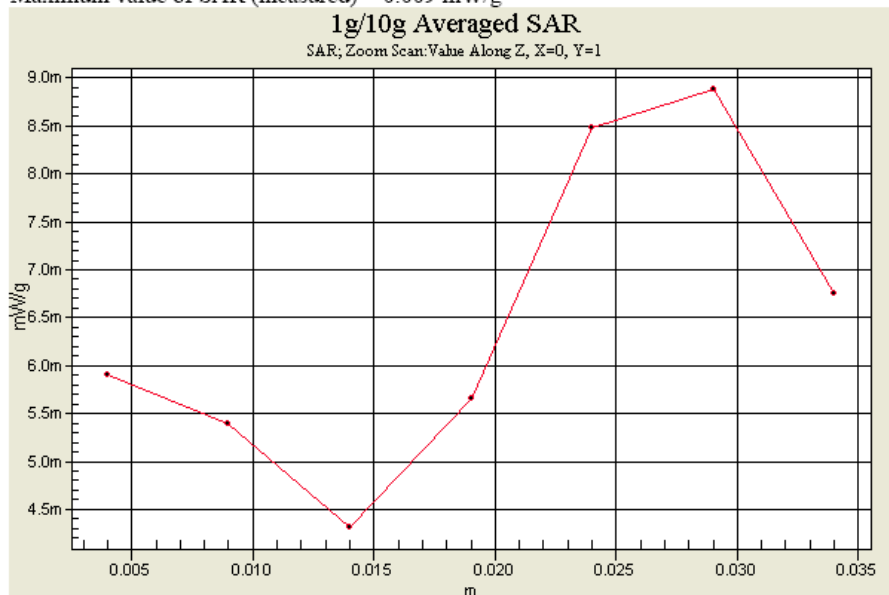
Ch6/Zoom Scan (5x5x7)/Cube 0: Measurement grid: dx=8mm, dy=8mm, dz=5mm

Reference Value = 1.57 V/m; Power Drift = 0.067 dB

Peak SAR (extrapolated) = 0.009 W/kg

SAR(1 g) = 0.00716 mW/g; SAR(10 g) = 0.00623 mW/g

Maximum value of SAR (measured) = 0.009 mW/g





Test Laboratory: Sporton International Inc. SAR Testing Lab

Date/Time: 3/17/2007 11:18:41 PM

Body_802.11a Ch40_NB Bottom Touch_20070317_Main Ant_2D**DUT: 602516**

Communication System: 802.11a; Frequency: 5200 MHz; Duty Cycle: 1:1

Medium: MSL_5G Medium parameters used: $f = 5200$ MHz; $\sigma = 5.19$ mho/m; $\epsilon_r = 48.5$; $\rho = 1000$ kg/m³

Ambient Temperature : 23.5 °C; Liquid Temperature : 21.4 °C

DASY4 Configuration:

- Probe: EX3DV3 - SN3514; ConvF(4.31, 4.31, 4.31); Calibrated: 2/21/2007
- Sensor-Surface: 2mm (Mechanical Surface Detection)
- Electronics: DAE3 Sn577; Calibrated: 11/21/2006
- Phantom: SAM-B; Type: QD 000 P40 C; Serial: TP-1383
- Measurement SW: DASY4, V4.7 Build 53; Postprocessing SW: SEMCAD, V1.8 Build 172

Ch40/Area Scan (201x301x1): Measurement grid: dx=10mm, dy=10mm

Maximum value of SAR (interpolated) = 0.121 mW/g

Ch40/Zoom Scan (8x8x8)/Cube 0: Measurement grid: dx=4.3mm, dy=4.3mm, dz=3mm

Reference Value = 6.03 V/m; Power Drift = -0.123 dB

Peak SAR (extrapolated) = 0.121 W/kg

SAR(1 g) = 0.109 mW/g; SAR(10 g) = 0.103 mW/g

Maximum value of SAR (measured) = 0.121 mW/g

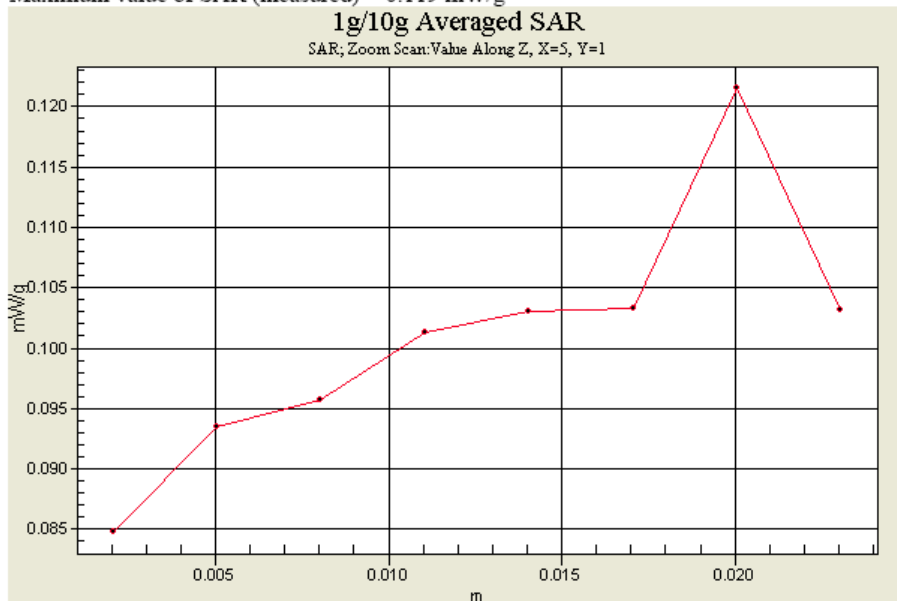
Ch40/Zoom Scan (8x8x8)/Cube 1: Measurement grid: dx=4.3mm, dy=4.3mm, dz=3mm

Reference Value = 6.03 V/m; Power Drift = -0.123 dB

Peak SAR (extrapolated) = 0.119 W/kg

SAR(1 g) = 0.102 mW/g; SAR(10 g) = 0.095 mW/g

Maximum value of SAR (measured) = 0.119 mW/g





Test Laboratory: Sporton International Inc. SAR Testing Lab

Date/Time: 3/18/2007 9:19:31 AM

Body_802.11a Ch157_NB Bottom Touch_20070317_Aux Ant_2D**DUT: 602516**

Communication System: 802.11a; Frequency: 5785 MHz; Duty Cycle: 1:1

Medium: MSL_5G Medium parameters used: $f = 5785$ MHz; $\sigma = 5.88$ mho/m; $\epsilon_r = 47.7$; $\rho = 1000$ kg/m³

Ambient Temperature : 23.1 °C; Liquid Temperature : 21.4 °C

DASY4 Configuration:

- Probe: EX3DV3 - SN3514; ConvF(4.16, 4.16, 4.16); Calibrated: 2/21/2007
- Sensor-Surface: 2mm (Mechanical Surface Detection)
- Electronics: DAE3 Sn577; Calibrated: 11/21/2006
- Phantom: SAM-B; Type: QD 000 P40 C; Serial: TP-1383
- Measurement SW: DASY4, V4.7 Build 53; Postprocessing SW: SEMCAD, V1.8 Build 172

Ch157/Area Scan (201x301x1): Measurement grid: dx=10mm, dy=10mm

Maximum value of SAR (interpolated) = 0.101 mW/g

Ch157/Zoom Scan (8x8x8)/Cube 1: Measurement grid: dx=4.3mm, dy=4.3mm, dz=3mm

Reference Value = 4.02 V/m; Power Drift = 0.092 dB

Peak SAR (extrapolated) = 0.400 W/kg

SAR(1 g) = 0.143 mW/g; SAR(10 g) = n.a.

Maximum value of SAR (measured) = 0.130 mW/g

Ch157/Zoom Scan (8x8x8)/Cube 0: Measurement grid: dx=4.3mm, dy=4.3mm, dz=3mm

Reference Value = 4.02 V/m; Power Drift = 0.092 dB

Peak SAR (extrapolated) = 0.124 W/kg

SAR(1 g) = 0.114 mW/g; SAR(10 g) = 0.107 mW/g

Maximum value of SAR (measured) = 0.124 mW/g

Ch157/Zoom Scan (8x8x8)/Cube 2: Measurement grid: dx=4.3mm, dy=4.3mm, dz=3mm

Reference Value = 4.02 V/m; Power Drift = 0.092 dB

Peak SAR (extrapolated) = 0.123 W/kg

SAR(1 g) = 0.114 mW/g; SAR(10 g) = 0.107 mW/g

Maximum value of SAR (measured) = 0.123 mW/g

