

## Wireless communications through the built-in modules

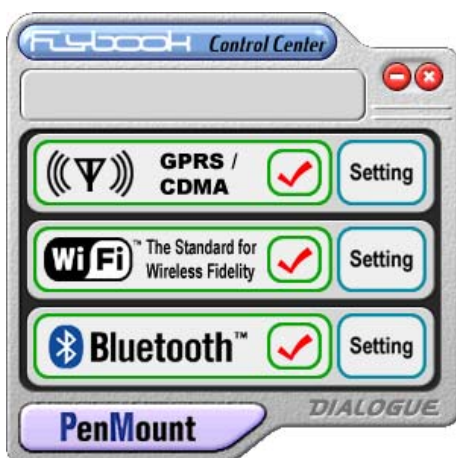
To start wireless communications through the built-in modules, you must turn on the power of the modules first and then make connections through the communication software programs.

You can use hot keys or **FlyBook Control Center** to turn on and off the power of modules.

To use hot keys, please see **Keyboard** section.

The following steps guide you to turn on and off the power through **FlyBook Control Center**:

- Double click on [FlyBook Control Center] icon in system tray. A **FlyBook Control Center** window appears.
- Click on module's name or icon to turn on (set checked) and off (set unchecked) the power of a module.



■

### Wireless Network Connection

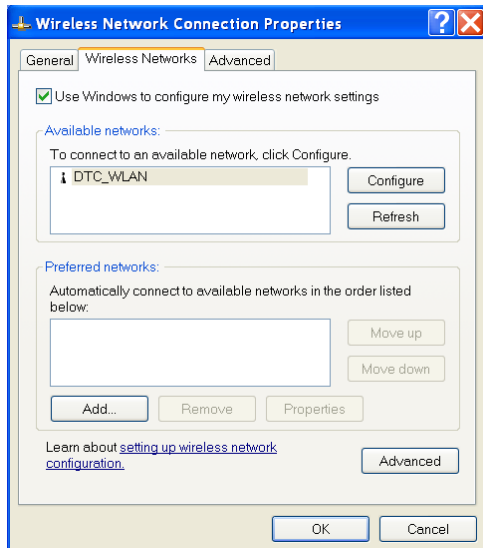
Although a peer-to-peer connection is allowed for the computer, for the most part, the computer communicates with an access-point to access resource on or over a wireless network.

#### Configuring your connections

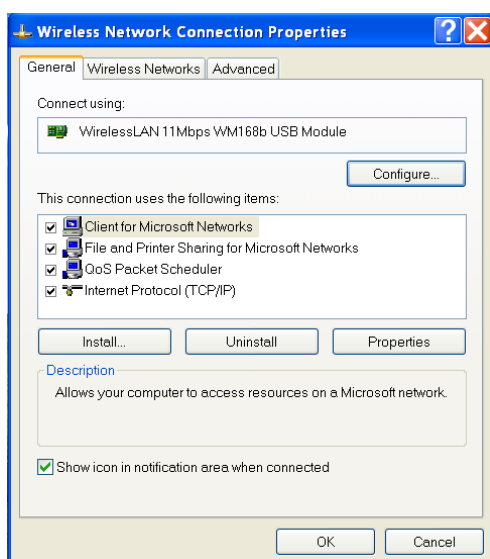
- Click on [Setting] icon in **FlyBook Control Center** window or double click on

[Wireless Network Connection] icon in **Network Connections** window. A **Wireless Network Connection Properties** window appears.

- Click on [Wireless Networks] tab. You can seek networks, configure the settings for the networks you wish to link and add them to the **Preferred Networks** under this tab.



- Click on [General] tab and refer to **Windows XP user's manual** to complete the TCP/IP configuration under this tab.
- 

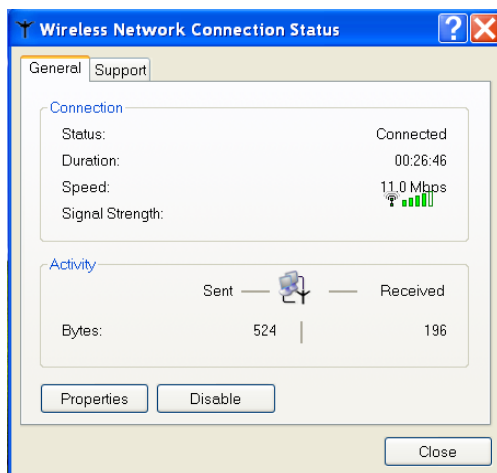


## Making connection to a Wireless Network

If the power of Wireless Network module is turned on, the computer will automatically seek the preferred networks listed in **Preferred Networks** and connect to the most preferred one found. The services provided to the network members will be activated once the computer is connected to the network.

You can double click on [Wireless Network Connection] icon in **Network Connections** window again. A **Wireless Network Connection Status** window will be invoked for you this time. In **Wireless Network Connection Status** window, you can:

- Check connection status.
- Disable and enable the connection.
- Click on [Properties] to invoke **Wireless Network Connection Properties** window again to change the connection settings.



---

### <Note>

In **Wireless Network Connection Properties** window, you can set “Shows icon in notification area when connected” checked. A **Wireless Network status** icon will show on the taskbar, and you can directly click on the icon to invoke the **Wireless Network Connection Status** window.



---

## Bluetooth communication (Optional)

When the power of Bluetooth module is turned on, the communication starts automatically. You can find a Bluetooth icon, which is blue in color with a white Bluetooth logo insert, in the system tray.

---

### <Note>

- If the power of Bluetooth module is turned on, but the icon is blue in color with a red Bluetooth logo insert, the communication has not been started yet. Please right-click on the icon and select "Start the Bluetooth Device" to start the communication.



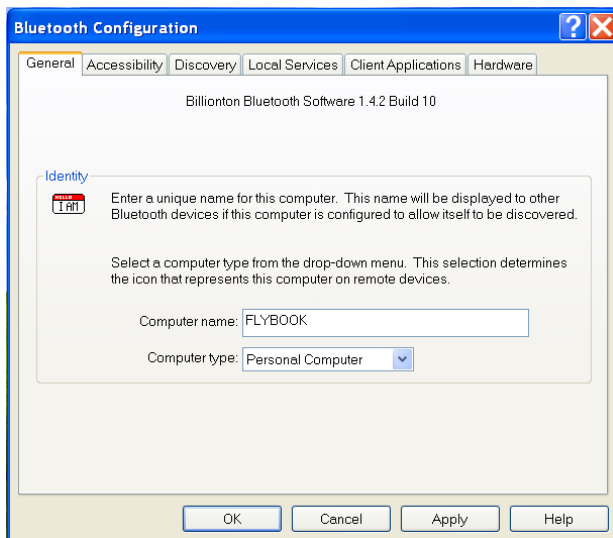
- To stop the communication, you can right-click on the icon again and select "Stop the Bluetooth Device". But it is better for you to turn off the power of the module (Through FlyBook Control Center) in order to conserve the power.
- 

## Configuring your connections

The computer connects to different types of Bluetooth-equipped devices via different types of Bluetooth service protocol. All of the connection settings are configured in **Bluetooth Configuration** window. You can right-click on the Bluetooth icon in system tray and then select [Advanced Configuration] to invoke **Bluetooth Configuration** window.

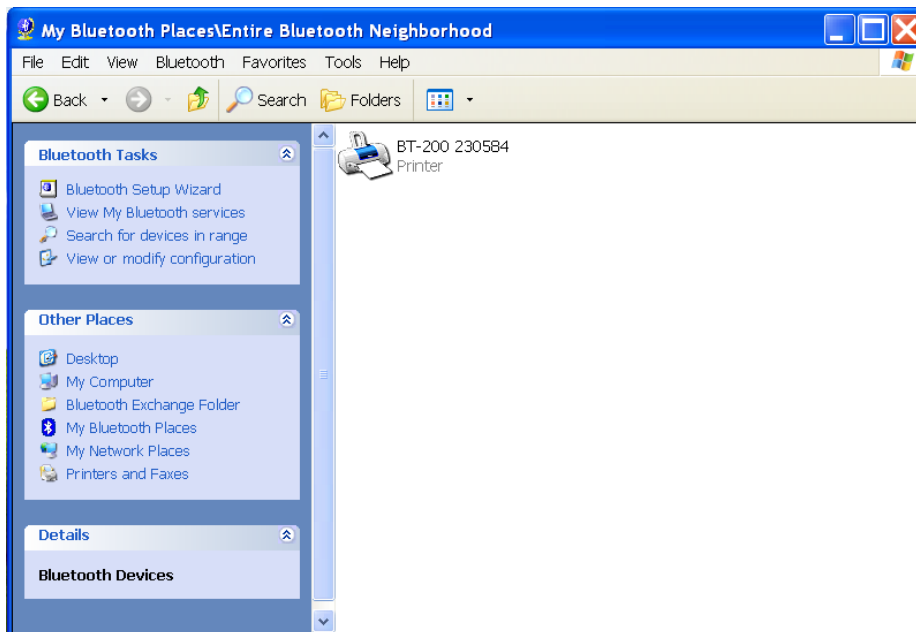
Please see **Bluetooth Application Note** in your Recovery CD to learn how to configure

your connections.

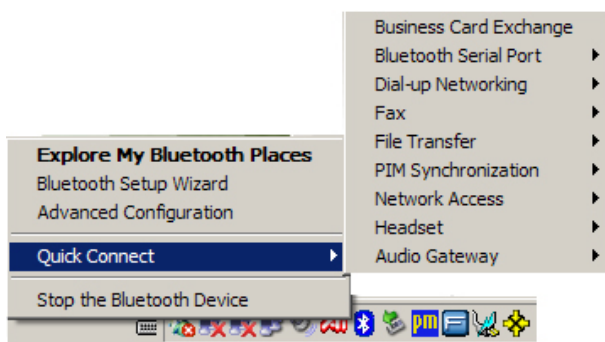


## Making connections to Bluetooth-equipped devices

You can right-click on the Bluetooth icon in system tray and then select [Explore My Bluetooth Places] to explore **My Bluetooth Places**. Make connections to your Bluetooth-equipped devices in **My Bluetooth Places** window.



Or you can right-click on the Bluetooth icon in system tray and then select [Quick Connect][Service name] to explore a specific connection service. Make connections to the specific type of devices in the explored window.



Please also see **Bluetooth Application Note** in your Recovery CD to learn how to make connections to your Bluetooth-equipped devices.

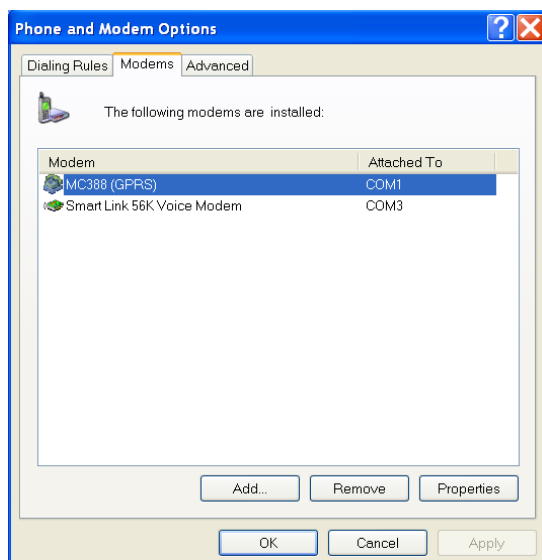
### **GPRS communication (Optional)**

If the GPRS module is available in your computer, first of all, you must apply for a GPRS account and get a SIM card from the network service provider before use. The SIM card is a key that allows you to connect the computer to a GPRS network. You can access Internet resource via the network.

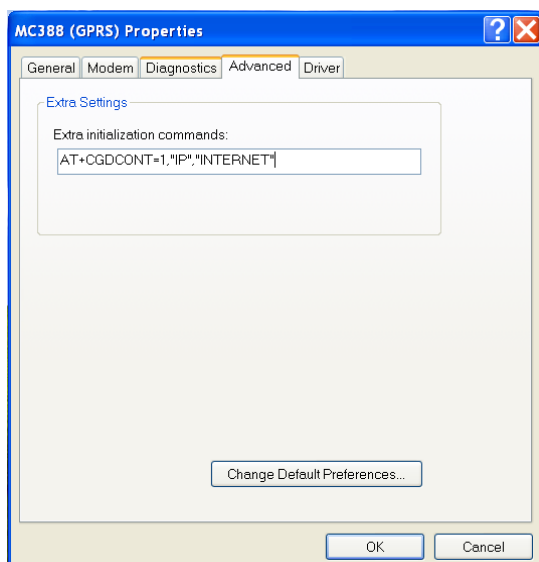
Insert the SIM card into the SIM card slot before turning on the power of the module.

## Configuring your connection

- Click on [setting] of GPRS/CDMA in **FlyBook Control Center** window. A **Telephone and MODEM** window appears.



- Select "MC388 (GPRS)" and then click on [Properties]. A **MC388 (GPRS) Properties** window appears.
- Click on [Advanced] tab and then input an initialization command in the **Extra initialization commands** input box.
- Click on [Ok] to close the window.



---

**<Note>**

**The Extra initialization command is different from network to network. Get the command from your network service provider.**

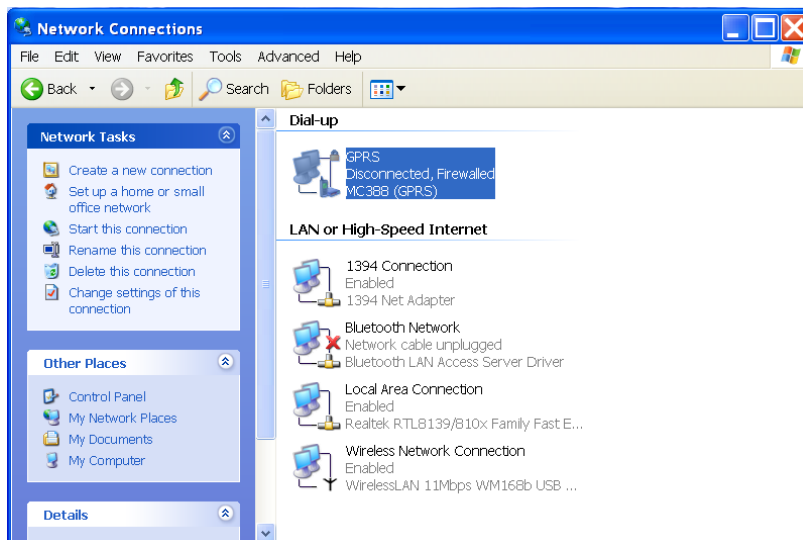
---

- In **Network Connections** window, run **Create a new connection** wizard to create a dial-up connection for GPRS. If completed, an entry will show in **Network Connections** window.

### **Making connection to a GPRS network**

Please follow the steps below to make a GPRS link (If a dial-up connection, named GPRS, is created.):

- Click on [GPRS] in **Network Connections** window. A **Connect to GPRS** dialogue box appears.



- Input phone number in **Dial-up** input box, and then input the user name and password of your account.



- Click on [Dial] to start the link.



If connected, click on [GPRS] again in **Network Connections** window. A connection status window appears this time. In the status window, you can:

- Check connection status.
- Stop the connection.

---

**<Note>**

The phone number of dial-up also depends on GPRS network. Get the phone number from your network service provider.

---