

Appendix D

Contour Plots

CDMA835 (1013CH)

DUT: ADR910L; Type: Bar; Serial: #1

Communication System: CDMA 835MHz FCC; Frequency: 824.7 MHz; Duty Cycle: 1:1
Medium parameters used: $\sigma = 0$ mho/m, $\epsilon_r = 1$; $\rho = 1$ kg/m³
Phantom section: AMB with Coil Section
Measurement Standard: DASYS4 (High Precision Assessment)

DASY4 Configuration:

- Probe: AM1DV2 - 1013; ; Calibrated: 2006-04-18
- Sensor-Surface: 0mm (Fix Surface)
- Electronics: DAE4 Sn614; Calibrated: 2011-09-27
- Phantom: HAC Test Arch with Coil; Type: SD HAC P01 BA; Serial: 1018
- Measurement SW: DASYS4, V4.7 Build 71; Postprocessing SW: SEMCAD, V1.8 Build 184

Point measurement/x (longitudinal) at max x/ABM Noise(x,y,z) (1x1x1):

Measurement grid: dx=10mm, dy=10mm

Cursor:

ABM2 = -28.2 dB A/m

Location: -12, 2.5, 363.7 mm

Point measurement/x (longitudinal) at max x/ABM SNR(x,y,z) (1x1x1):

Measurement grid: dx=10mm, dy=10mm

Cursor:

ABM1/ABM2 = 24.5 dB

ABM1 comp = -3.68 dB A/m

BWC Factor = 0.151969 dB

Location: -12, 2.5, 363.7 mm

Point measurement/x (longitudinal) at max x/ABM Signal(x,y,z) (1x1x1):

Measurement grid: dx=10mm, dy=10mm

Cursor:

ABM1 comp = -3.68 dB A/m

BWC Factor = 0.151969 dB

Location: -12, 2.5, 363.7 mm

Point measurement/y (transversal) at max y/ABM Noise(x,y,z) (1x1x1):

Measurement grid: dx=10mm, dy=10mm

Cursor:

ABM2 = -46.3 dB A/m

Location: -4.5, -9, 363.7 mm

Point measurement/y (transversal) at max y/ABM SNR(x,y,z) (1x1x1):

Measurement grid: dx=10mm, dy=10mm

Cursor:

ABM1/ABM2 = 40.9 dB

ABM1 comp = -5.41 dB A/m

BWC Factor = 0.151969 dB

Location: -4.5, -9, 363.7 mm

Point measurement/y (transversal) at max y/ABM Signal(x,y,z) (1x1x1):

Measurement grid: dx=10mm, dy=10mm

Cursor:

ABM1 comp = -5.41 dB A/m

BWC Factor = 0.151969 dB

Location: -4.5, -9, 363.7 mm

Scans/z (axial) 15 x 15/ABM Signal(x,y,z) (8x8x1):

Measurement grid: dx=10mm, dy=10mm

Cursor:

ABM1 comp = 6.45 dB A/m

BWC Factor = 0.15103 dB

Location: -0.5, -1.5, 363.7 mm

Point measurement/z (axial) 300-3k response at max/ABM Freq Resp(x,y,z,f) (1x1x1):

Measurement grid: dx=10mm, dy=10mm

Cursor:

Diff = 1.07 dB
BWC Factor = 10.8 dB
Location: -2.8, -1.2, 365 mm

Point measurement/z (axial) at max z/ABM Noise(x,y,z) (1x1x1):

Measurement grid: dx=10mm, dy=10mm

Cursor:

ABM2 = -38.1 dB A/m
Location: -4.5, 0.5, 363.7 mm

Point measurement/z (axial) at max z/ABM SNR(x,y,z) (1x1x1):

Measurement grid: dx=10mm, dy=10mm

Cursor:

ABM1/ABM2 = 43.1 dB
ABM1 comp = 5.01 dB A/m
BWC Factor = 0.151969 dB
Location: -4.5, 0.5, 363.7 mm

Point measurement/z (axial) at max z/ABM Signal(x,y,z) (1x1x1):

Measurement grid: dx=10mm, dy=10mm

Cursor:

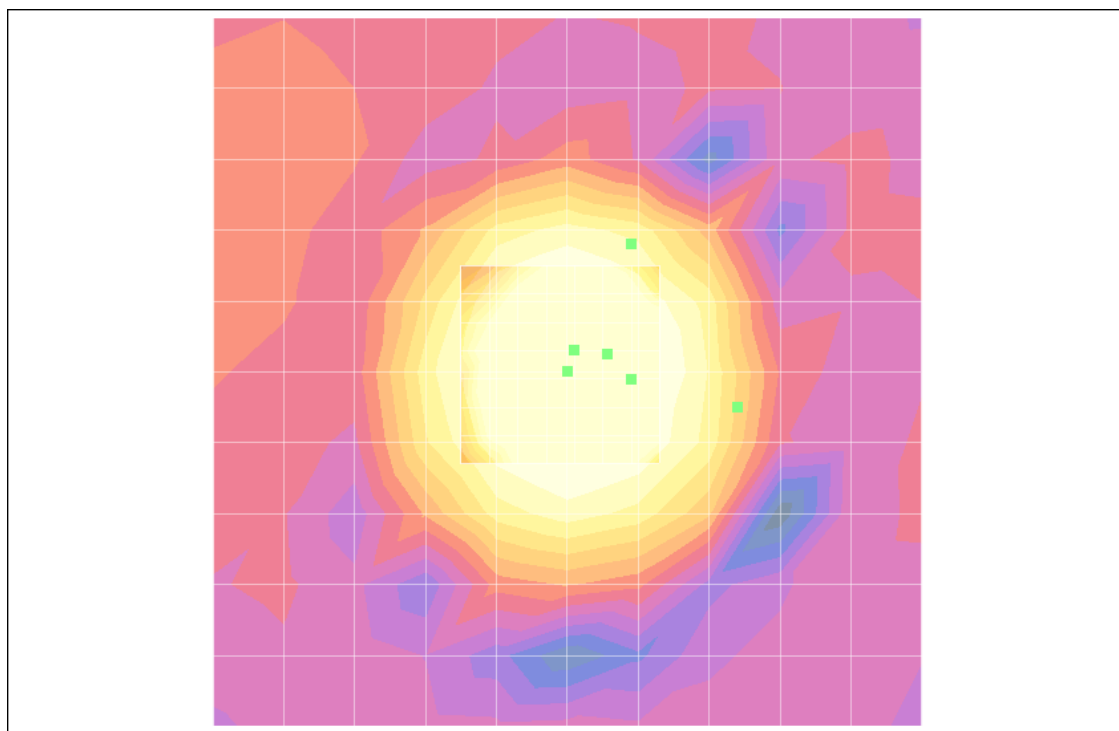
ABM1 comp = 5.01 dB A/m
BWC Factor = 0.151969 dB
Location: -4.5, 0.5, 363.7 mm

Scans/z (axial) rough 50 x 50/ABM Signal(x,y,z) (11x11x1):

Measurement grid: dx=10mm, dy=10mm

Cursor:

ABM1 comp = 6.34 dB A/m
BWC Factor = 0.15103 dB
Location: 0, 0, 363.7 mm



0 dB = 1.00A/m

CDMA835 (384CH)

DUT: ADR910L; Type: Bar; Serial: #1

Communication System: CDMA 835MHz FCC; Frequency: 836.52 MHz; Duty Cycle: 1:1
Medium parameters used: $\sigma = 0$ mho/m, $\epsilon_r = 1$; $\rho = 1$ kg/m³
Phantom section: AMB with Coil Section
Measurement Standard: DAS4 (High Precision Assessment)

DASY4 Configuration:

- Probe: AM1DV2 - 1013; ; Calibrated: 2006-04-18
- Sensor-Surface: 0mm (Fix Surface)
- Electronics: DAE4 Sn869; Calibrated: 2011-09-22
- Phantom: HAC Test Arch with Coil; Type: SD HAC P01 BA; Serial: 1018
- Measurement SW: DAS4, V4.7 Build 71; Postprocessing SW: SEMCAD, V1.8 Build 184

Point measurement/x (longitudinal) at max x/ABM Noise(x,y,z) (1x1x1):

Measurement grid: dx=10mm, dy=10mm

Cursor:

ABM2 = -39.3 dB A/m

Location: -8, 0.5, 363.7 mm

Point measurement/x (longitudinal) at max x/ABM SNR(x,y,z) (1x1x1):

Measurement grid: dx=10mm, dy=10mm

Cursor:

ABM1/ABM2 = 36.5 dB

ABM1 comp = -2.80 dB A/m

BWC Factor = 0.151969 dB

Location: -8, 0.5, 363.7 mm

Point measurement/x (longitudinal) at max x/ABM Signal(x,y,z) (1x1x1):

Measurement grid: dx=10mm, dy=10mm

Cursor:

ABM1 comp = -2.80 dB A/m

BWC Factor = 0.151969 dB

Location: -8, 0.5, 363.7 mm

Point measurement/y (transversal) at max y/ABM Noise(x,y,z) (1x1x1):

Measurement grid: dx=10mm, dy=10mm

Cursor:

ABM2 = -47.8 dB A/m

Location: -2.5, 8, 363.7 mm

Point measurement/y (transversal) at max y/ABM SNR(x,y,z) (1x1x1):

Measurement grid: dx=10mm, dy=10mm

Cursor:

ABM1/ABM2 = 45.6 dB

ABM1 comp = -2.18 dB A/m

BWC Factor = 0.151969 dB

Location: -2.5, 8, 363.7 mm

Point measurement/y (transversal) at max y/ABM Signal(x,y,z) (1x1x1):

Measurement grid: dx=10mm, dy=10mm

Cursor:

ABM1 comp = -2.18 dB A/m

BWC Factor = 0.151969 dB

Location: -2.5, 8, 363.7 mm

Scans/z (axial) 15 x 15/ABM Signal(x,y,z) (8x8x1):

Measurement grid: dx=10mm, dy=10mm

Cursor:

ABM1 comp = 7.68 dB A/m

BWC Factor = 0.151969 dB

Location: -0.5, 0.5, 363.7 mm

Point measurement/z (axial) 300-3k response at max/ABM Freq Resp(x,y,z,f) (1x1x1):

Measurement grid: dx=10mm, dy=10mm

Cursor:

Diff = 0.393 dB

BWC Factor = 10.8 dB

Location: -0.8, -1.2, 365 mm

Point measurement/z (axial) at max z/ABM Noise(x,y,z) (1x1x1):

Measurement grid: dx=10mm, dy=10mm

Cursor:

ABM2 = -39.6 dB A/m

Location: -2.5, 0.5, 363.7 mm

Point measurement/z (axial) at max z/ABM SNR(x,y,z) (1x1x1):

Measurement grid: dx=10mm, dy=10mm

Cursor:

ABM1/ABM2 = 46.4 dB

ABM1 comp = 6.80 dB A/m

BWC Factor = 0.151969 dB

Location: -2.5, 0.5, 363.7 mm

Point measurement/z (axial) at max z/ABM Signal(x,y,z) (1x1x1):

Measurement grid: dx=10mm, dy=10mm

Cursor:

ABM1 comp = 6.80 dB A/m

BWC Factor = 0.151969 dB

Location: -2.5, 0.5, 363.7 mm

Scans/z (axial) rough 50 x 50/ABM Signal(x,y,z) (11x11x1):

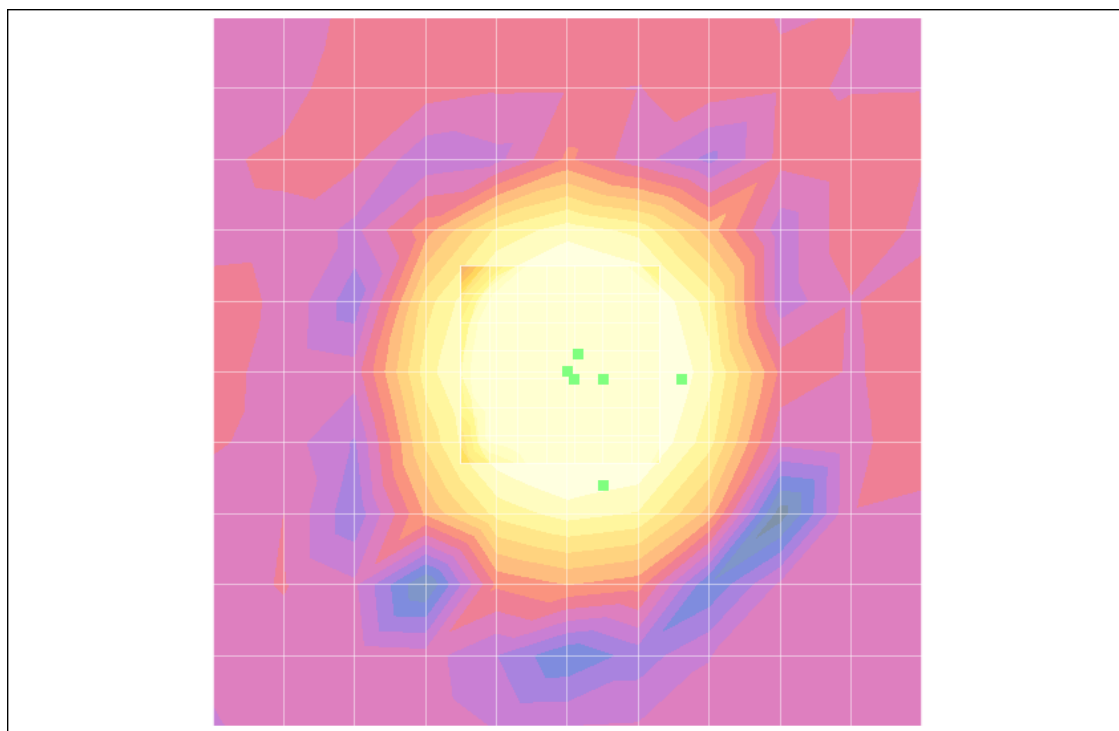
Measurement grid: dx=10mm, dy=10mm

Cursor:

ABM1 comp = 8.43 dB A/m

BWC Factor = 0.151969 dB

Location: 0, 0, 363.7 mm



0 dB = 1.00A/m

CDMA835 (777CH)

DUT: ADR910L; Type: Bar; Serial: #1

Communication System: CDMA 835MHz FCC; Frequency: 848.31 MHz; Duty Cycle: 1:1
Medium parameters used: $\sigma = 0$ mho/m, $\epsilon_r = 1$; $\rho = 1$ kg/m³
Phantom section: AMB with Coil Section
Measurement Standard: DAS4 (High Precision Assessment)

DASY4 Configuration:

- Probe: AM1DV2 - 1013; ; Calibrated: 2006-04-18
- Sensor-Surface: 0mm (Fix Surface)
- Electronics: DAE4 Sn869; Calibrated: 2011-09-22
- Phantom: HAC Test Arch with Coil; Type: SD HAC P01 BA; Serial: 1018
- Measurement SW: DAS4, V4.7 Build 71; Postprocessing SW: SEMCAD, V1.8 Build 184

Point measurement/x (longitudinal) at max x/ABM Noise(x,y,z) (1x1x1):

Measurement grid: dx=10mm, dy=10mm

Cursor:

ABM2 = -39.2 dB A/m

Location: -10, 0.5, 363.7 mm

Point measurement/x (longitudinal) at max x/ABM SNR(x,y,z) (1x1x1):

Measurement grid: dx=10mm, dy=10mm

Cursor:

ABM1/ABM2 = 37.1 dB

ABM1 comp = -2.17 dB A/m

BWC Factor = 0.15103 dB

Location: -10, 0.5, 363.7 mm

Point measurement/x (longitudinal) at max x/ABM Signal(x,y,z) (1x1x1):

Measurement grid: dx=10mm, dy=10mm

Cursor:

ABM1 comp = -2.17 dB A/m

BWC Factor = 0.15103 dB

Location: -10, 0.5, 363.7 mm

Point measurement/y (transversal) at max y/ABM Noise(x,y,z) (1x1x1):

Measurement grid: dx=10mm, dy=10mm

Cursor:

ABM2 = -47.9 dB A/m

Location: -2.5, -5, 363.7 mm

Point measurement/y (transversal) at max y/ABM SNR(x,y,z) (1x1x1):

Measurement grid: dx=10mm, dy=10mm

Cursor:

ABM1/ABM2 = 45.7 dB

ABM1 comp = -2.20 dB A/m

BWC Factor = 0.15103 dB

Location: -2.5, -5, 363.7 mm

Point measurement/y (transversal) at max y/ABM Signal(x,y,z) (1x1x1):

Measurement grid: dx=10mm, dy=10mm

Cursor:

ABM1 comp = -2.20 dB A/m

BWC Factor = 0.15103 dB

Location: -2.5, -5, 363.7 mm

Scans/z (axial) 15 x 15/ABM Signal(x,y,z) (8x8x1):

Measurement grid: dx=10mm, dy=10mm

Cursor:

ABM1 comp = 7.98 dB A/m

BWC Factor = 0.151969 dB

Location: -2.5, 0.5, 363.7 mm

Point measurement/z (axial) 300-3k response at max/ABM Freq Resp(x,y,z,f) (1x1x1):

Measurement grid: dx=10mm, dy=10mm

Cursor:

Diff = 0.962 dB

BWC Factor = 10.8 dB

Location: -0.8, -1.2, 365 mm

Point measurement/z (axial) at max z/ABM Noise(x,y,z) (1x1x1):

Measurement grid: dx=10mm, dy=10mm

Cursor:

ABM2 = -37.0 dB A/m

Location: -2.5, 0.5, 363.7 mm

Point measurement/z (axial) at max z/ABM SNR(x,y,z) (1x1x1):

Measurement grid: dx=10mm, dy=10mm

Cursor:

ABM1/ABM2 = 44.2 dB

ABM1 comp = 7.21 dB A/m

BWC Factor = 0.15103 dB

Location: -2.5, 0.5, 363.7 mm

Point measurement/z (axial) at max z/ABM Signal(x,y,z) (1x1x1):

Measurement grid: dx=10mm, dy=10mm

Cursor:

ABM1 comp = 7.21 dB A/m

BWC Factor = 0.15103 dB

Location: -2.5, 0.5, 363.7 mm

Scans/z (axial) rough 50 x 50/ABM Signal(x,y,z) (11x11x1):

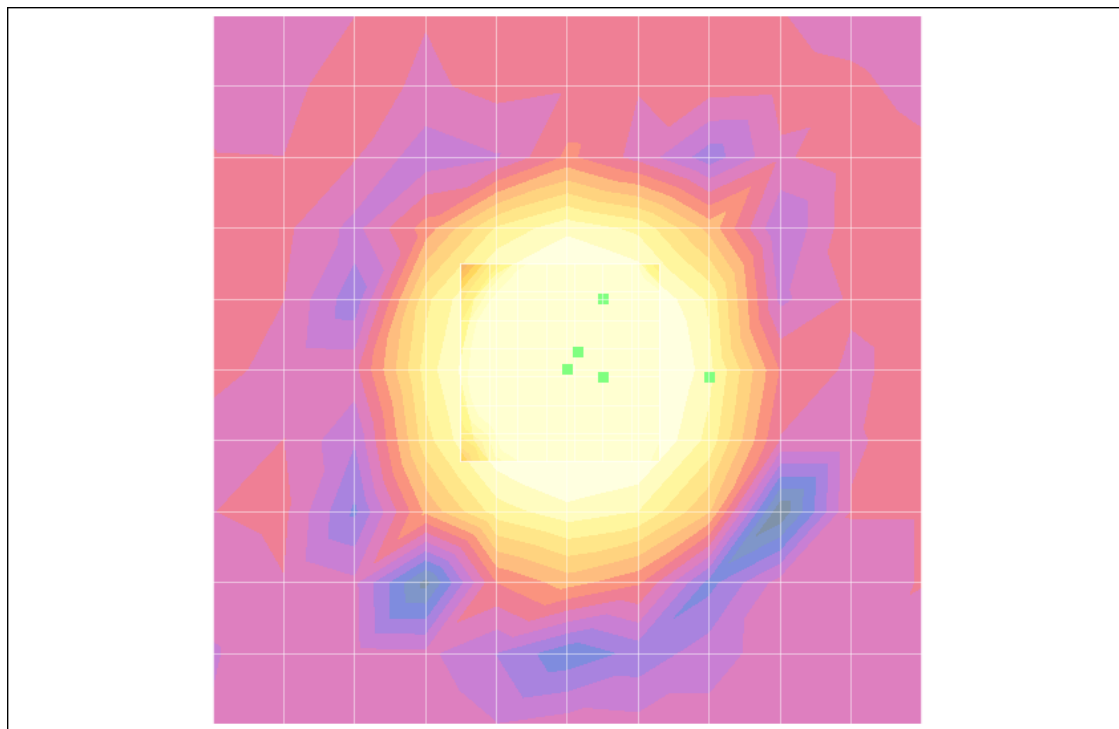
Measurement grid: dx=10mm, dy=10mm

Cursor:

ABM1 comp = 8.05 dB A/m

BWC Factor = 0.151969 dB

Location: 0, 0, 363.7 mm



0 dB = 1.00A/m

PCS1900 (25CH)

DUT: ADR910L; Type: Bar; Serial: #1

Communication System: PCS 1900MHz FCC; Frequency: 1851.25 MHz; Duty Cycle: 1:1
Medium parameters used: $\sigma = 0$ mho/m, $\epsilon_r = 1$; $\rho = 1$ kg/m³
Phantom section: AMB with Coil Section
Measurement Standard: DASYS4 (High Precision Assessment)

DASY4 Configuration:

- Probe: AM1DV2 - 1013; ; Calibrated: 2006-04-18
- Sensor-Surface: 0mm (Fix Surface)
- Electronics: DAE4 Sn614; Calibrated: 2011-09-27
- Phantom: HAC Test Arch with Coil; Type: SD HAC P01 BA; Serial: 1018
- Measurement SW: DASYS4, V4.7 Build 71; Postprocessing SW: SEMCAD, V1.8 Build 184

Point measurement/x (longitudinal) at max x/ABM Noise(x,y,z) (1x1x1):

Measurement grid: dx=10mm, dy=10mm

Cursor:

ABM2 = -29.9 dB A/m

Location: -5, -1.5, 363.7 mm

Point measurement/x (longitudinal) at max x/ABM SNR(x,y,z) (1x1x1):

Measurement grid: dx=10mm, dy=10mm

Cursor:

ABM1/ABM2 = 24.7 dB

ABM1 comp = -5.24 dB A/m

BWC Factor = 0.151969 dB

Location: -5, -1.5, 363.7 mm

Point measurement/x (longitudinal) at max x/ABM Signal(x,y,z) (1x1x1):

Measurement grid: dx=10mm, dy=10mm

Cursor:

ABM1 comp = -5.24 dB A/m

BWC Factor = 0.151969 dB

Location: -5, -1.5, 363.7 mm

Point measurement/y (transversal) at max y/ABM Noise(x,y,z) (1x1x1):

Measurement grid: dx=10mm, dy=10mm

Cursor:

ABM2 = -41.6 dB A/m

Location: -4.5, 8, 363.7 mm

Point measurement/y (transversal) at max y/ABM SNR(x,y,z) (1x1x1):

Measurement grid: dx=10mm, dy=10mm

Cursor:

ABM1/ABM2 = 37.5 dB

ABM1 comp = -4.02 dB A/m

BWC Factor = 0.151969 dB

Location: -4.5, 8, 363.7 mm

Point measurement/y (transversal) at max y/ABM Signal(x,y,z) (1x1x1):

Measurement grid: dx=10mm, dy=10mm

Cursor:

ABM1 comp = -4.02 dB A/m

BWC Factor = 0.151969 dB

Location: -4.5, 8, 363.7 mm

Scans/z (axial) 15 x 15/ABM Signal(x,y,z) (8x8x1):

Measurement grid: dx=10mm, dy=10mm

Cursor:

ABM1 comp = 8.00 dB A/m

BWC Factor = 0.151969 dB

Location: -0.5, -1.5, 363.7 mm

Point measurement/z (axial) 300-3k response at max/ABM Freq Resp(x,y,z,f) (1x1x1):

Measurement grid: dx=10mm, dy=10mm

Cursor:

Diff = 0.357 dB

BWC Factor = 10.8 dB

Location: -0.8, -1.2, 365 mm

Point measurement/z (axial) at max z/ABM Noise(x,y,z) (1x1x1):

Measurement grid: dx=10mm, dy=10mm

Cursor:

ABM2 = -39.1 dB A/m

Location: -2.5, 0.5, 363.7 mm

Point measurement/z (axial) at max z/ABM SNR(x,y,z) (1x1x1):

Measurement grid: dx=10mm, dy=10mm

Cursor:

ABM1/ABM2 = 44.7 dB

ABM1 comp = 5.54 dB A/m

BWC Factor = 0.151969 dB

Location: -2.5, 0.5, 363.7 mm

Point measurement/z (axial) at max z/ABM Signal(x,y,z) (1x1x1):

Measurement grid: dx=10mm, dy=10mm

Cursor:

ABM1 comp = 5.54 dB A/m

BWC Factor = 0.151969 dB

Location: -2.5, 0.5, 363.7 mm

Scans/z (axial) rough 50 x 50/ABM Signal(x,y,z) (11x11x1):

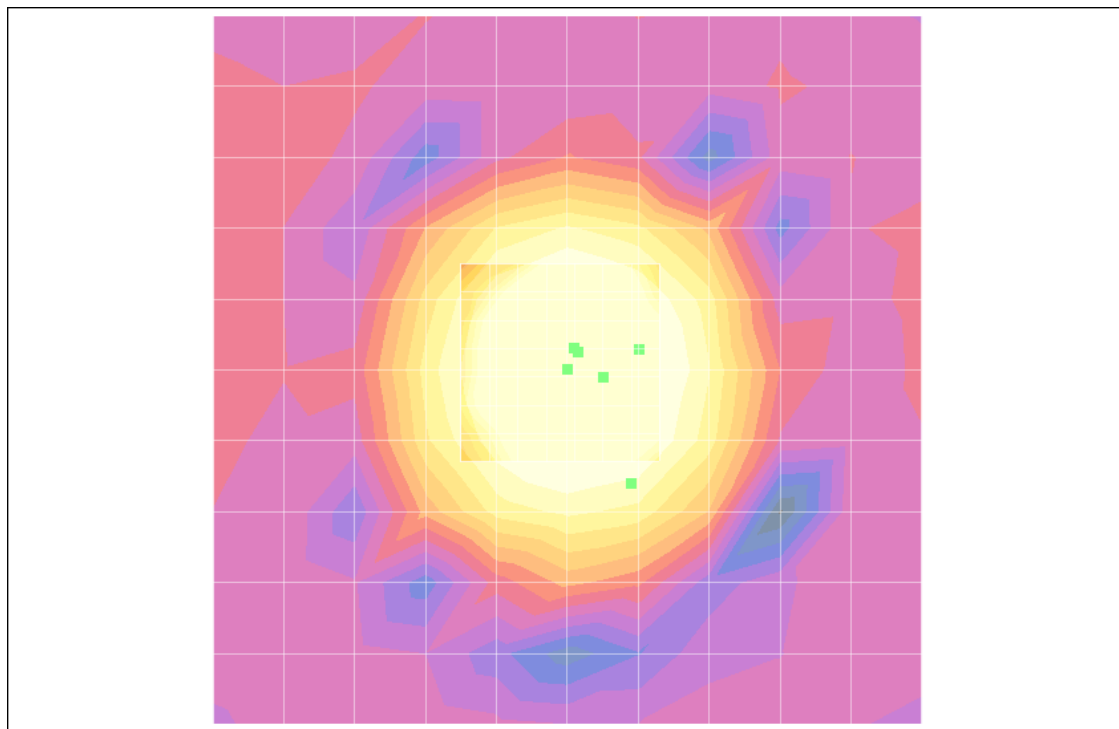
Measurement grid: dx=10mm, dy=10mm

Cursor:

ABM1 comp = 7.18 dB A/m

BWC Factor = 0.151969 dB

Location: 0, 0, 363.7 mm



0 dB = 1.00A/m

PCS1900 (600CH)

DUT: ADR910L; Type: Bar; Serial: #1

Communication System: PCS 1900MHz FCC; Frequency: 1880 MHz; Duty Cycle: 1:1
Medium parameters used: $\sigma = 0$ mho/m, $\epsilon_r = 1$; $\rho = 1$ kg/m³
Phantom section: AMB with Coil Section
Measurement Standard: DASYS4 (High Precision Assessment)

DASY4 Configuration:

- Probe: AM1DV2 - 1013; ; Calibrated: 2006-04-18
- Sensor-Surface: 0mm (Fix Surface)
- Electronics: DAE4 Sn614; Calibrated: 2011-09-27
- Phantom: HAC Test Arch with Coil; Type: SD HAC P01 BA; Serial: 1018
- Measurement SW: DASYS4, V4.7 Build 71; Postprocessing SW: SEMCAD, V1.8 Build 184

Point measurement/x (longitudinal) at max x/ABM Noise(x,y,z) (1x1x1):

Measurement grid: dx=10mm, dy=10mm

Cursor:

ABM2 = -38.8 dB A/m

Location: -8, -1.5, 363.7 mm

Point measurement/x (longitudinal) at max x/ABM SNR(x,y,z) (1x1x1):

Measurement grid: dx=10mm, dy=10mm

Cursor:

ABM1/ABM2 = 36.5 dB

ABM1 comp = -2.30 dB A/m

BWC Factor = 0.151969 dB

Location: -8, -1.5, 363.7 mm

Point measurement/x (longitudinal) at max x/ABM Signal(x,y,z) (1x1x1):

Measurement grid: dx=10mm, dy=10mm

Cursor:

ABM1 comp = -2.30 dB A/m

BWC Factor = 0.151969 dB

Location: -8, -1.5, 363.7 mm

Point measurement/y (transversal) at max y/ABM Noise(x,y,z) (1x1x1):

Measurement grid: dx=10mm, dy=10mm

Cursor:

ABM2 = -47.5 dB A/m

Location: -2.5, -7, 363.7 mm

Point measurement/y (transversal) at max y/ABM SNR(x,y,z) (1x1x1):

Measurement grid: dx=10mm, dy=10mm

Cursor:

ABM1/ABM2 = 43.5 dB

ABM1 comp = -3.99 dB A/m

BWC Factor = 0.151969 dB

Location: -2.5, -7, 363.7 mm

Point measurement/y (transversal) at max y/ABM Signal(x,y,z) (1x1x1):

Measurement grid: dx=10mm, dy=10mm

Cursor:

ABM1 comp = -3.99 dB A/m

BWC Factor = 0.151969 dB

Location: -2.5, -7, 363.7 mm

Scans/z (axial) 15 x 15/ABM Signal(x,y,z) (8x8x1):

Measurement grid: dx=10mm, dy=10mm

Cursor:

ABM1 comp = 6.66 dB A/m

BWC Factor = 0.151969 dB

Location: 1.5, 0.5, 363.7 mm

Point measurement/z (axial) 300-3k response at max/ABM Freq Resp(x,y,z,f) (1x1x1):

Measurement grid: dx=10mm, dy=10mm

Cursor:

Diff = 1.19 dB
BWC Factor = 10.8 dB
Location: -0.8, -3.2, 365 mm

Point measurement/z (axial) at max z/ABM Noise(x,y,z) (1x1x1):

Measurement grid: dx=10mm, dy=10mm

Cursor:

ABM2 = -38.7 dB A/m
Location: -2.5, -1.5, 363.7 mm

Point measurement/z (axial) at max z/ABM SNR(x,y,z) (1x1x1):

Measurement grid: dx=10mm, dy=10mm

Cursor:

ABM1/ABM2 = 45.0 dB
ABM1 comp = 6.32 dB A/m
BWC Factor = 0.151969 dB
Location: -2.5, -1.5, 363.7 mm

Point measurement/z (axial) at max z/ABM Signal(x,y,z) (1x1x1):

Measurement grid: dx=10mm, dy=10mm

Cursor:

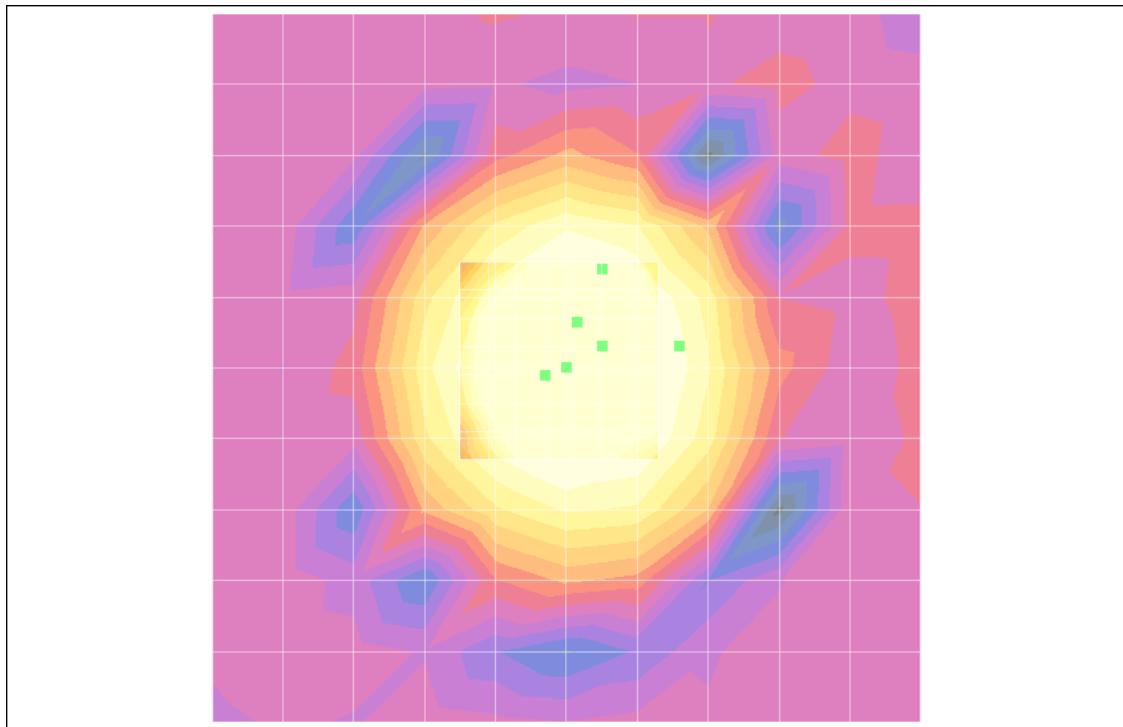
ABM1 comp = 6.32 dB A/m
BWC Factor = 0.151969 dB
Location: -2.5, -1.5, 363.7 mm

Scans/z (axial) rough 50 x 50/ABM Signal(x,y,z) (11x11x1):

Measurement grid: dx=10mm, dy=10mm

Cursor:

ABM1 comp = 6.50 dB A/m
BWC Factor = 0.151969 dB
Location: 0, 0, 363.7 mm



0 dB = 1.00A/m

PCS1900 (1175CH)

DUT: ADR910L; Type: Bar; Serial: #1

Communication System: PCS 1900MHz FCC; Frequency: 1908.75 MHz; Duty Cycle: 1:1
Medium parameters used: $\sigma = 0$ mho/m, $\epsilon_r = 1$; $\rho = 1$ kg/m³
Phantom section: AMB with Coil Section
Measurement Standard: DAS4 (High Precision Assessment)

DASY4 Configuration:

- Probe: AM1DV2 - 1013; ; Calibrated: 2006-04-18
- Sensor-Surface: 0mm (Fix Surface)
- Electronics: DAE4 Sn614; Calibrated: 2011-09-27
- Phantom: HAC Test Arch with Coil; Type: SD HAC P01 BA; Serial: 1018
- Measurement SW: DAS4, V4.7 Build 71; Postprocessing SW: SEMCAD, V1.8 Build 184

Point measurement/x (longitudinal) at max x/ABM Noise(x,y,z) (1x1x1):

Measurement grid: dx=10mm, dy=10mm

Cursor:

ABM2 = -33.4 dB A/m

Location: -12, 0.5, 363.7 mm

Point measurement/x (longitudinal) at max x/ABM SNR(x,y,z) (1x1x1):

Measurement grid: dx=10mm, dy=10mm

Cursor:

ABM1/ABM2 = 30.0 dB

ABM1 comp = -3.34 dB A/m

BWC Factor = 0.151969 dB

Location: -12, 0.5, 363.7 mm

Point measurement/x (longitudinal) at max x/ABM Signal(x,y,z) (1x1x1):

Measurement grid: dx=10mm, dy=10mm

Cursor:

ABM1 comp = -3.34 dB A/m

BWC Factor = 0.151969 dB

Location: -12, 0.5, 363.7 mm

Point measurement/y (transversal) at max y/ABM Noise(x,y,z) (1x1x1):

Measurement grid: dx=10mm, dy=10mm

Cursor:

ABM2 = -43.0 dB A/m

Location: -6.5, 8, 363.7 mm

Point measurement/y (transversal) at max y/ABM SNR(x,y,z) (1x1x1):

Measurement grid: dx=10mm, dy=10mm

Cursor:

ABM1/ABM2 = 37.6 dB

ABM1 comp = -5.39 dB A/m

BWC Factor = 0.151969 dB

Location: -6.5, 8, 363.7 mm

Point measurement/y (transversal) at max y/ABM Signal(x,y,z) (1x1x1):

Measurement grid: dx=10mm, dy=10mm

Cursor:

ABM1 comp = -5.39 dB A/m

BWC Factor = 0.151969 dB

Location: -6.5, 8, 363.7 mm

Scans/z (axial) 15 x 15/ABM Signal(x,y,z) (8x8x1):

Measurement grid: dx=10mm, dy=10mm

Cursor:

ABM1 comp = 7.13 dB A/m

BWC Factor = 0.151969 dB

Location: -0.5, 0.5, 363.7 mm

Point measurement/z (axial) 300-3k response at max/ABM Freq Resp(x,y,z,f) (1x1x1):

Measurement grid: dx=10mm, dy=10mm

Cursor:

Diff = 1.78 dB
BWC Factor = 10.8 dB
Location: 1.2, -1.2, 365 mm

Point measurement/z (axial) at max z/ABM Noise(x,y,z) (1x1x1):

Measurement grid: dx=10mm, dy=10mm

Cursor:

ABM2 = -37.8 dB A/m
Location: -0.5, 0.5, 363.7 mm

Point measurement/z (axial) at max z/ABM SNR(x,y,z) (1x1x1):

Measurement grid: dx=10mm, dy=10mm

Cursor:

ABM1/ABM2 = 43.7 dB
ABM1 comp = 5.92 dB A/m
BWC Factor = 0.151969 dB
Location: -0.5, 0.5, 363.7 mm

Point measurement/z (axial) at max z/ABM Signal(x,y,z) (1x1x1):

Measurement grid: dx=10mm, dy=10mm

Cursor:

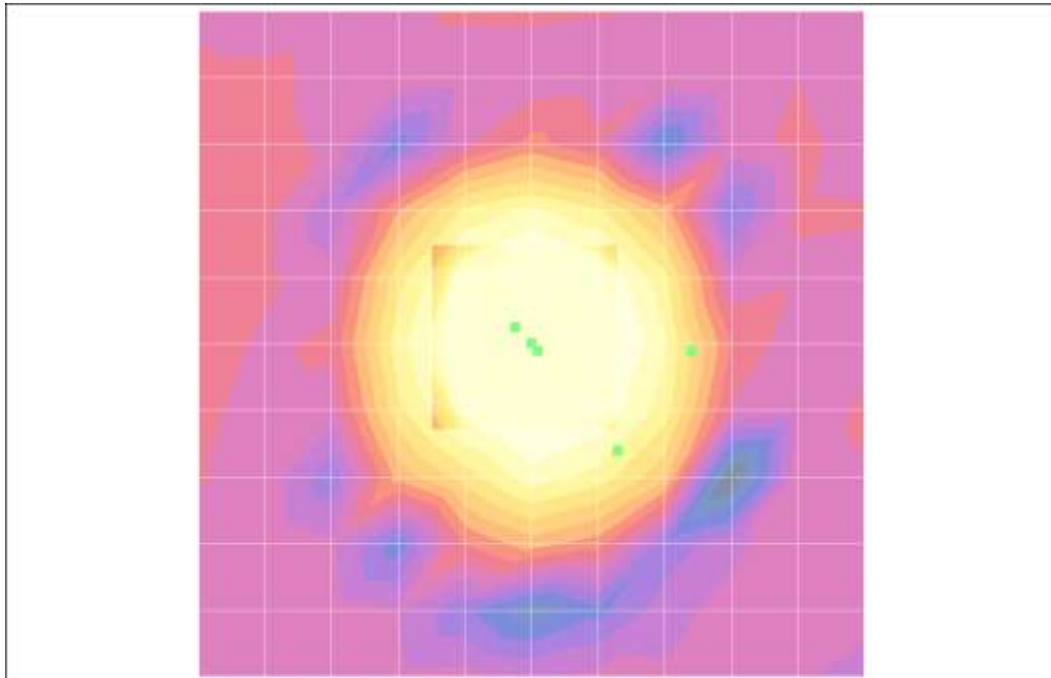
ABM1 comp = 5.92 dB A/m
BWC Factor = 0.151969 dB
Location: -0.5, 0.5, 363.7 mm

Scans/z (axial) rough 50 x 50/ABM Signal(x,y,z) (11x11x1):

Measurement grid: dx=10mm, dy=10mm

Cursor:

ABM1 comp = 6.53 dB A/m
BWC Factor = 0.151969 dB
Location: 0, 0, 363.7 mm



0 dB = 1.00A/m