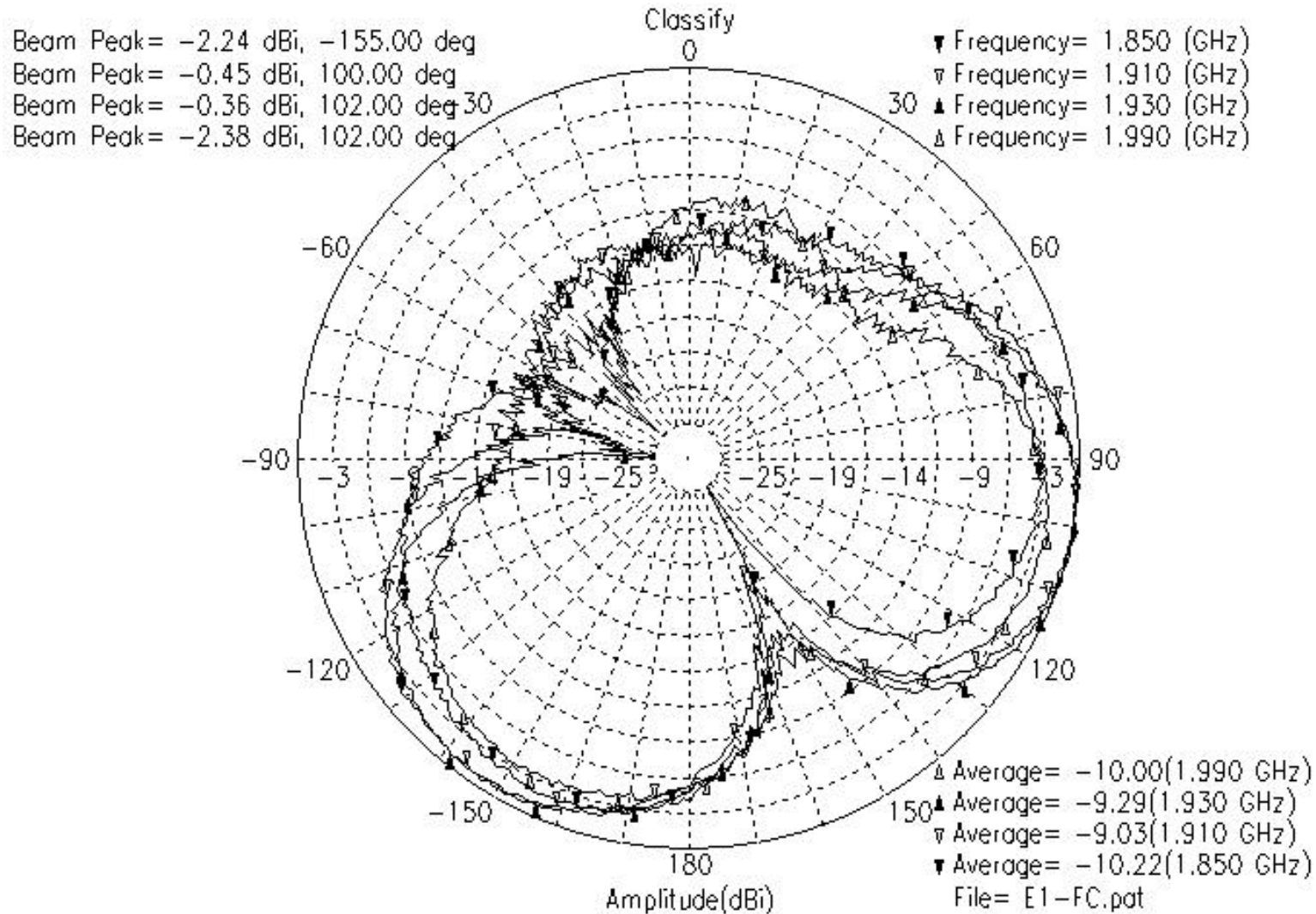


| Specification Sheet | | Approval | Prepared | Review | Confirm | Approval | |
|---|-----------------|--------------|--------------|----------------|-------------|----------------|-----------|
| | | | | | | | |
| | | | / | / | / | / | |
| Model | BELLONA | REV. | IR | | | | |
| No | | Page | 1 of 1 | | | | |
| Name | JUN HEE KIM | Date | 2003. 11. 01 | | | | |
| Electrical Spec | | | | | | | |
| Frequency Range (GHz) | | GSM | | DCS | | PCS | |
| | | 880 – 960MHz | | 1710 - 1880MHz | | 1850 – 1990MHz | |
| V.S.W.R(Less than) | Band (MHz) | TX | RX | TX | RX | TX | RX |
| | | 880-915 | 925-960 | 1710 - 1785 | 1805 - 1880 | 1850-1910 | 1930-1990 |
| | FC | 3.0 : 1 | 3.0 : 1 | 4.0 : 1 | 3.0 : 1 | 3.0 : 1 | 3.5 : 1 |
| | FO | 3.0 : 1 | 3.5 : 1 | 3.5 : 1 | 3.0 : 1 | 3.0 : 1 | 3.0 : 1 |
| E2-PLANE Gain(dBi) (Peak Gain , More Than) | FC | - 1.0 | - 0.5 | - 4.5 | - 4.0 | - 2.5 | - 4.0 |
| | FO | - 0.5 | - 0.5 | - 2.0 | - 2.0 | - 1.0 | - 1.0 |
| Nominal Impedance | 50 ohms | | | | | | |
| Polarization | Vertical | | | | | | |
| Max Input power | 2 Watt | | | | | | |
| Mechanical Spec | | | | | | | |
| Length | 30.9 ± 0.5 mm | | | | | | |
| Weight | 1.8 g | | | | | | |
| Connector type | SNAP IN | | | | | | |
| Cover material | PC(HF-1023IM) | | | | | | |
| Swivel Torque | More Than 3Kgf | | | | | | |
| Pulling force | More Than 10Kgf | | | | | | |
| Temperature Range | -20 +70 | | | | | | |
| Other | | | | | | | |

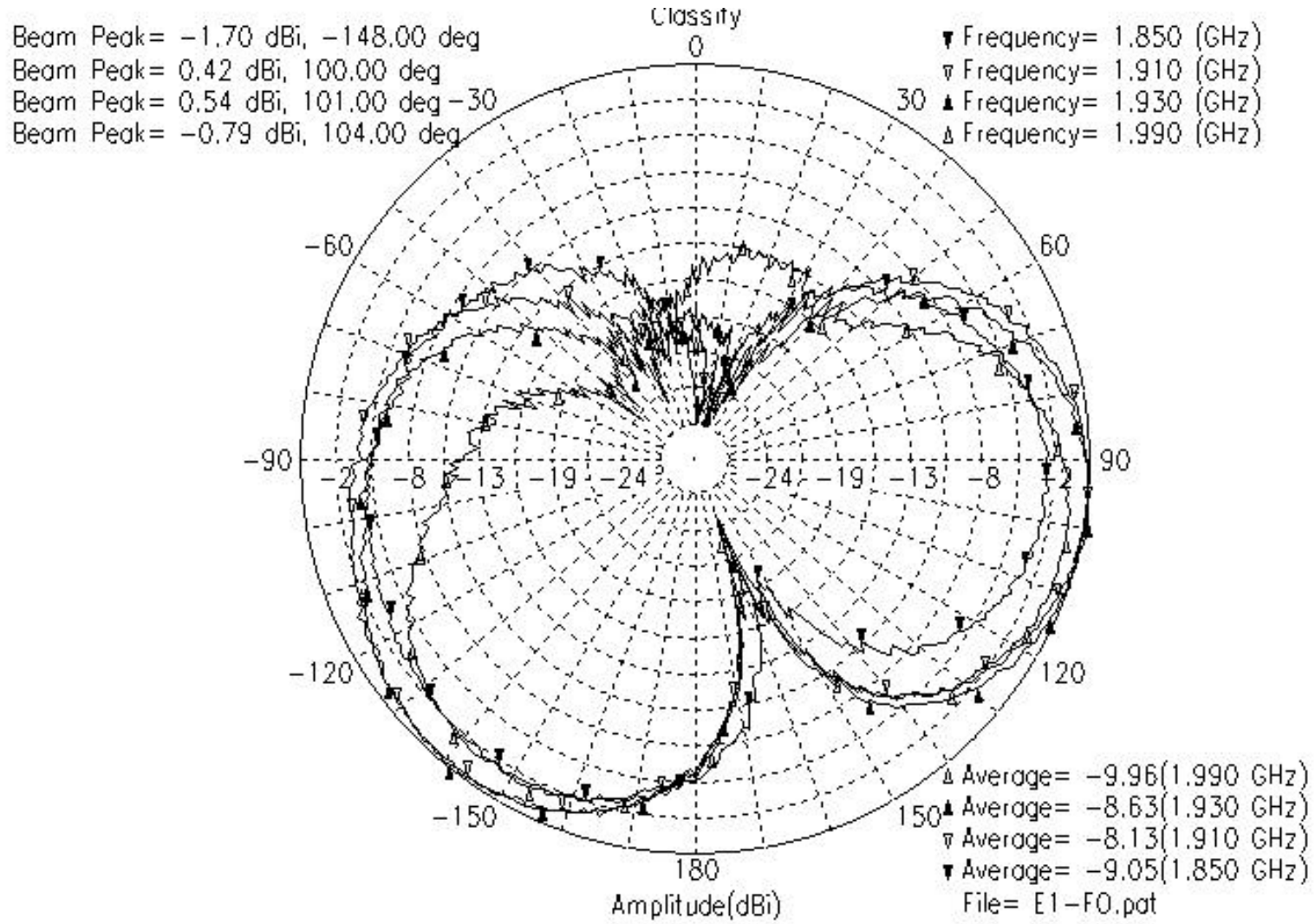
Antenna Radiation Pattern

PCS-E1-FOLDER CLOSED



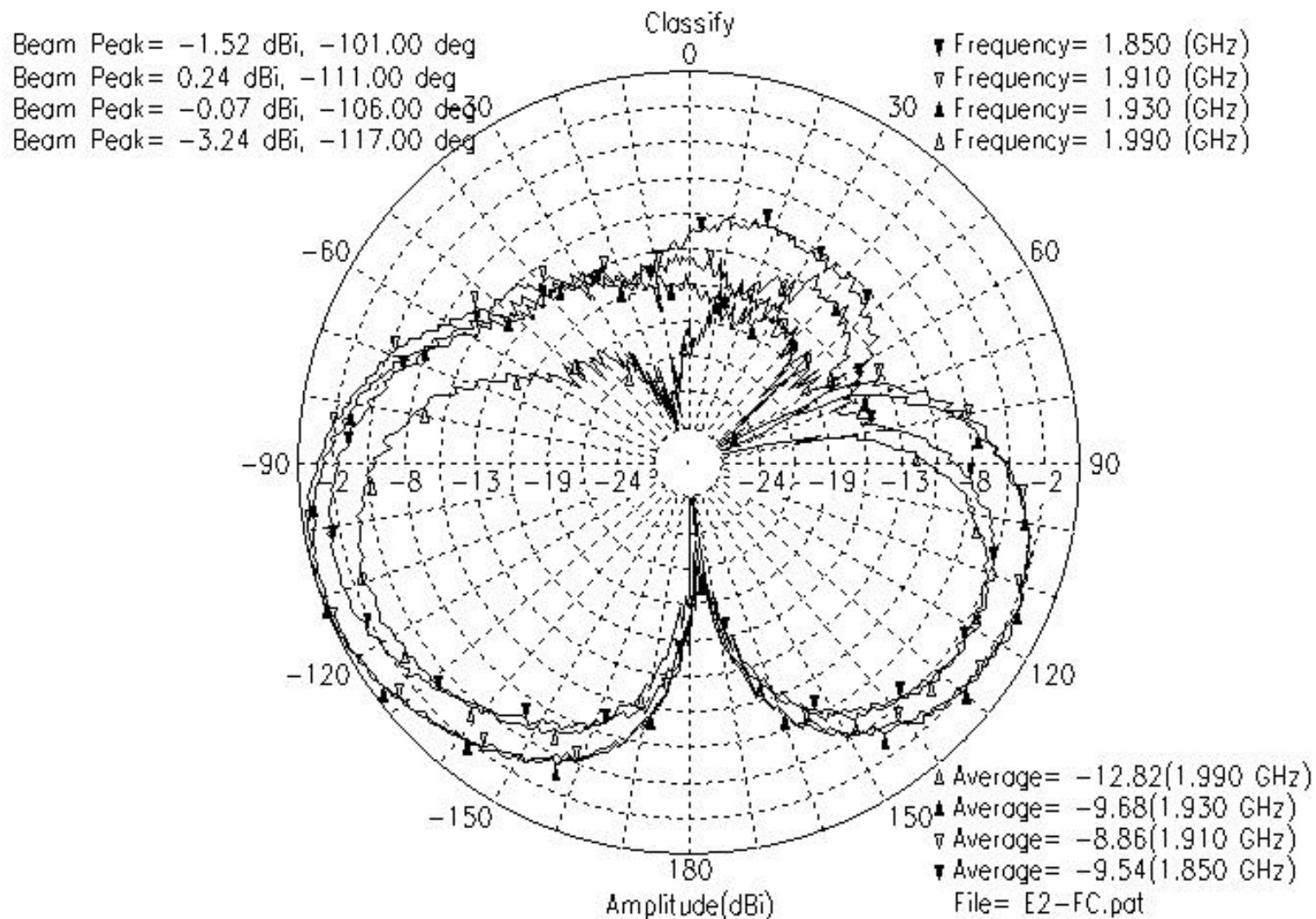
Antenna Radiation Pattern

PCS-E1-FOLDER OPENED



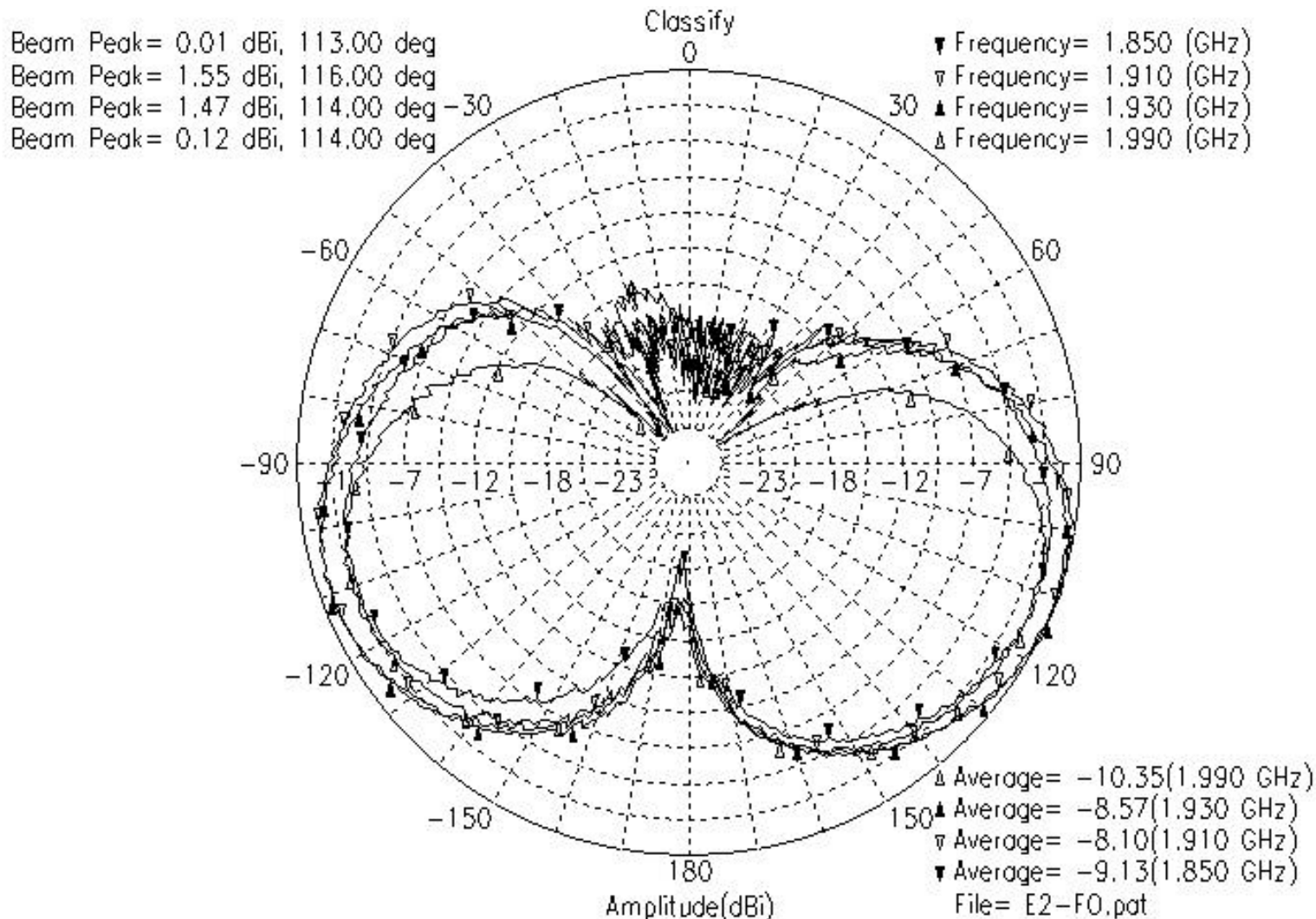
Antenna Radiation Pattern

PCS-E2-FOLDER CLOSED



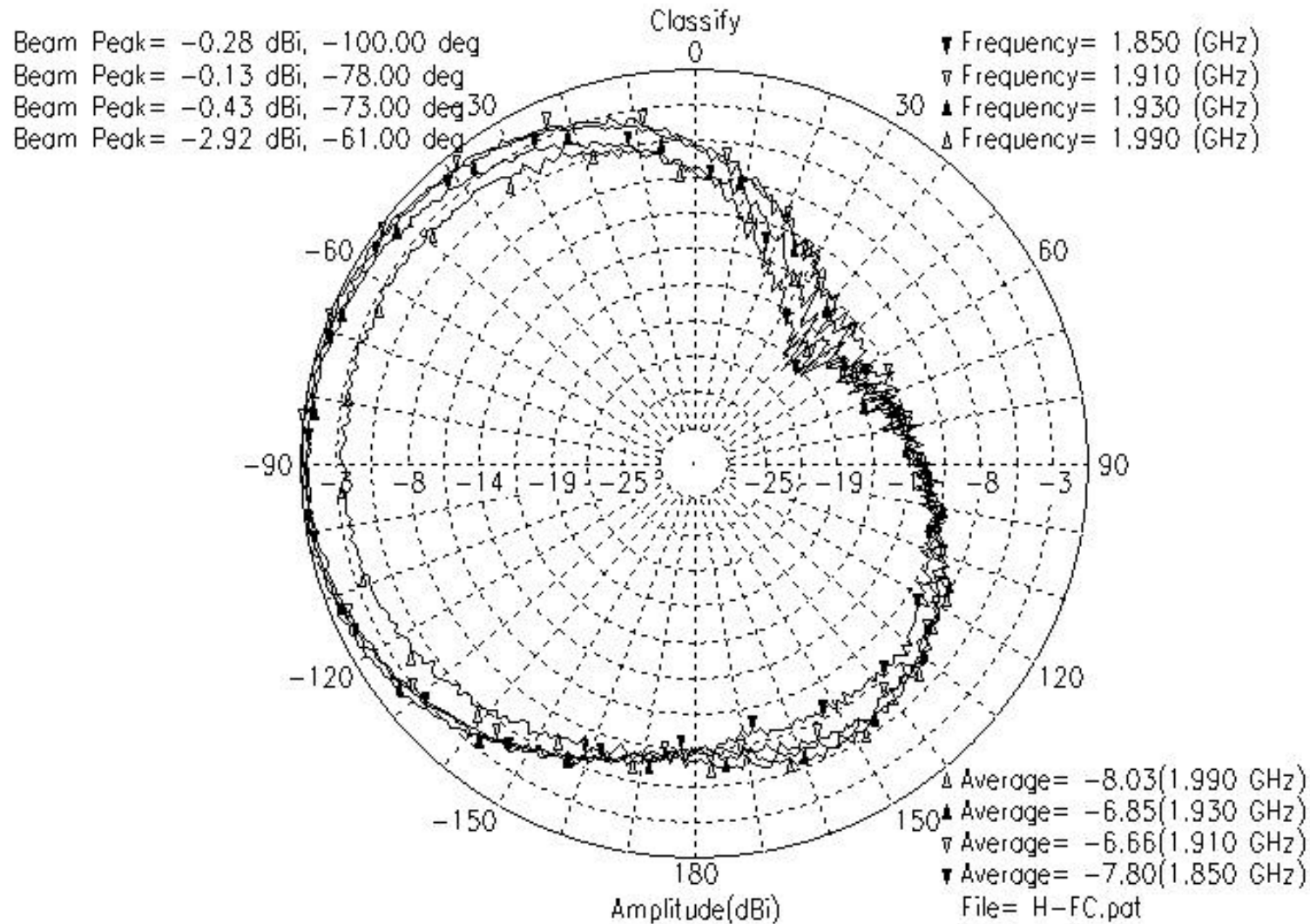
Antenna Radiation Pattern

PCS-E2-FOLDER OPENED



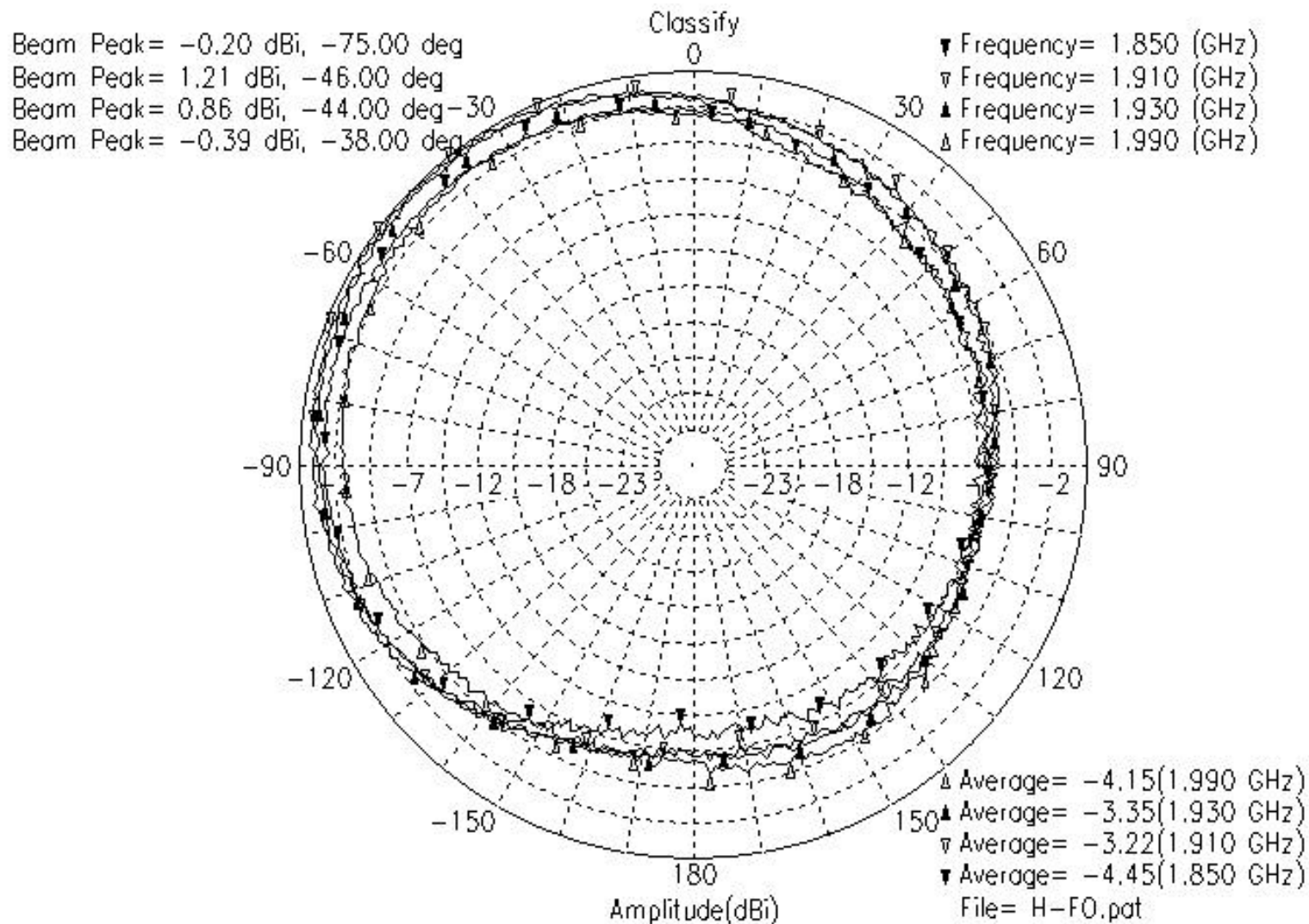
Antenna Radiation Pattern

PCS-H-FOLDER CLOSED



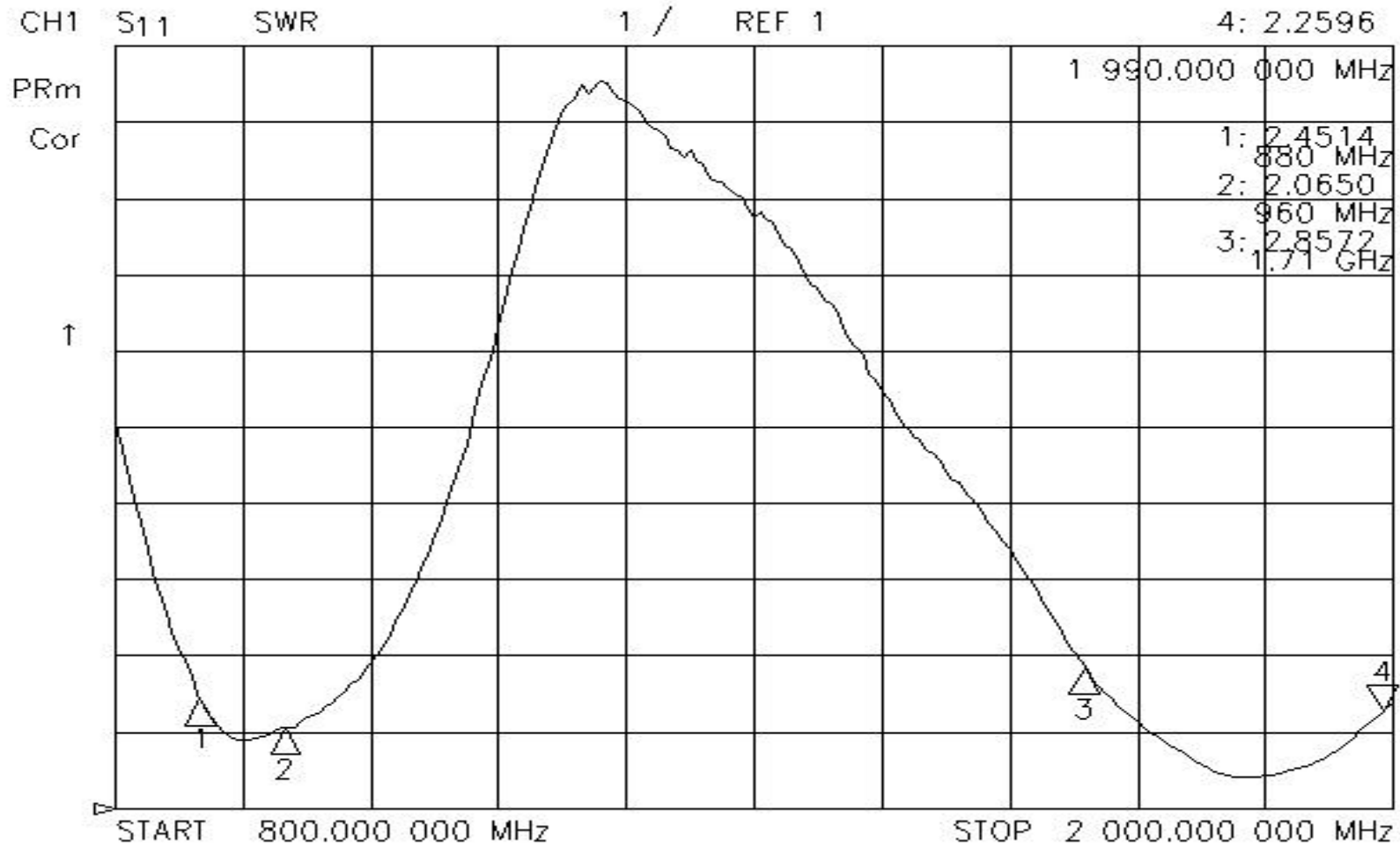
Antenna Radiation Pattern

PCS-H-FOLDER OPENED



Antenna Radiation Pattern

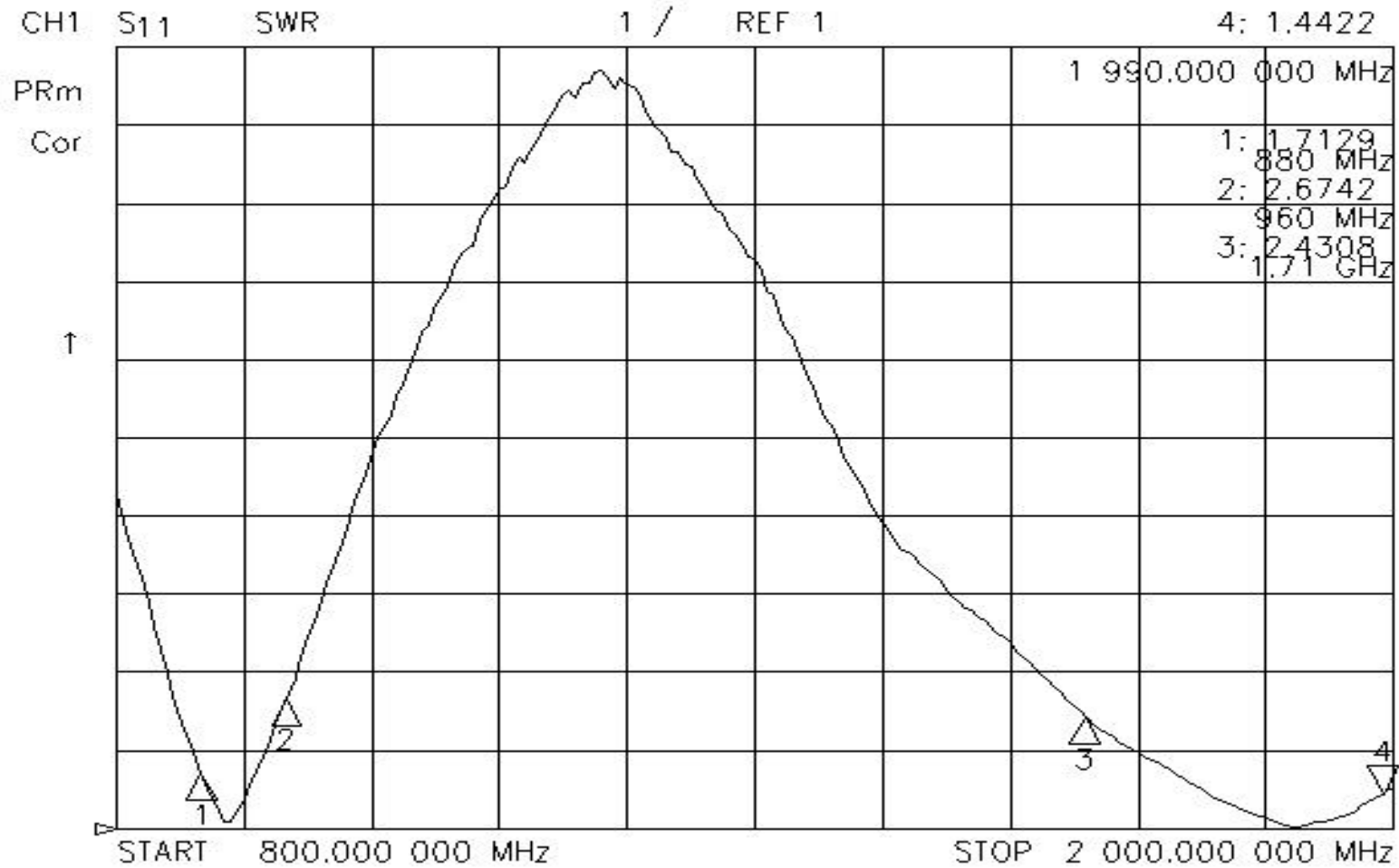
VSWR



Folder Close

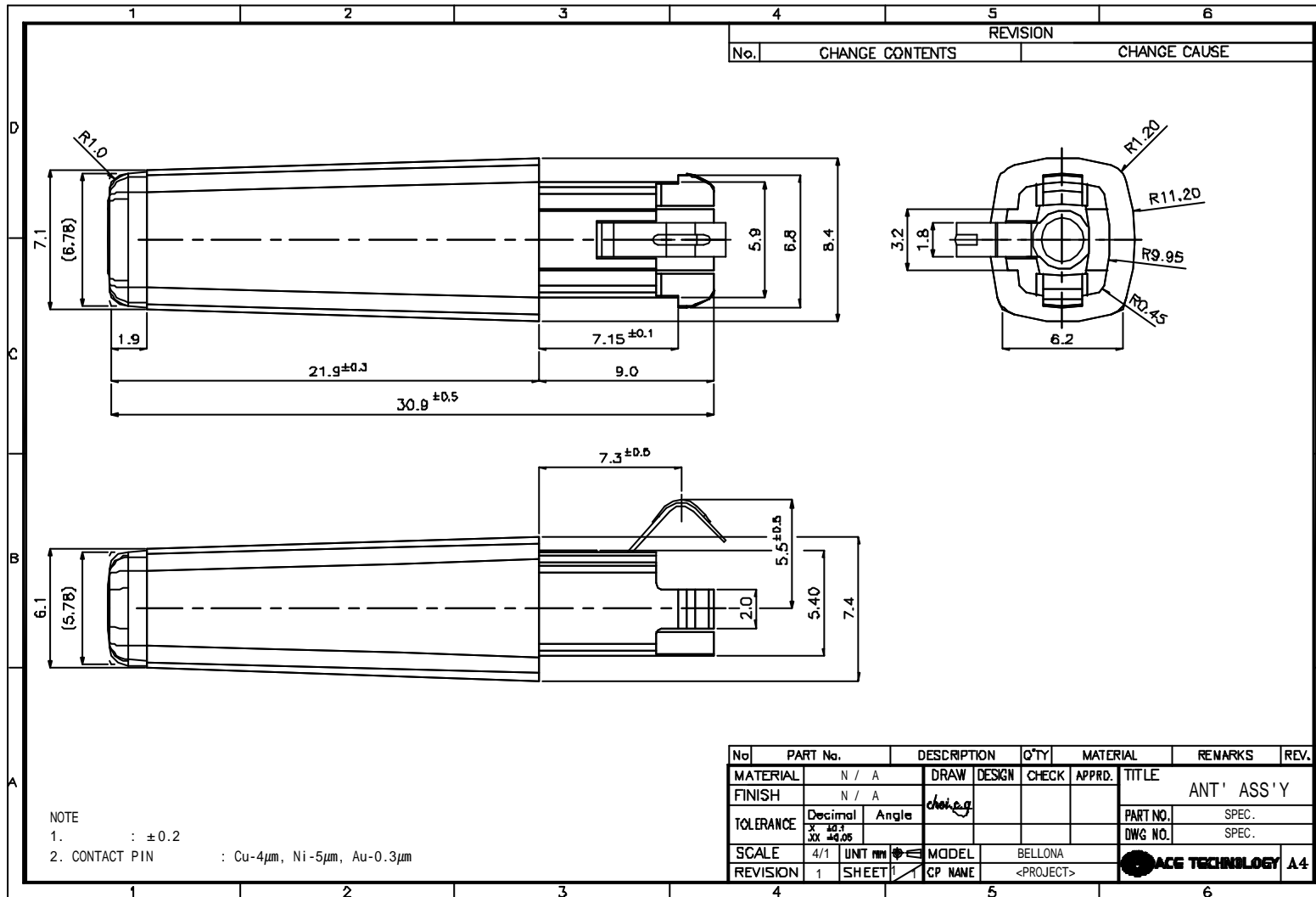
Antenna Radiation Pattern

VSWR



Folder Open

Antenna Radiation Pattern



AQF-70202-02.IR