

# JYCAPACHE Bluetooth&WIFI ANTENNA

June 10, 2011



# Contents

---

## 1. Summary for passive measurement data

- 2D Data
- VSWR
- Radiation pattern

## **Manufacturer & Antenna Type**

---

Manufacturer of Bluetooth & WiFi antenna : Dongnam Co., Ltd

Antenna Type : FPCB

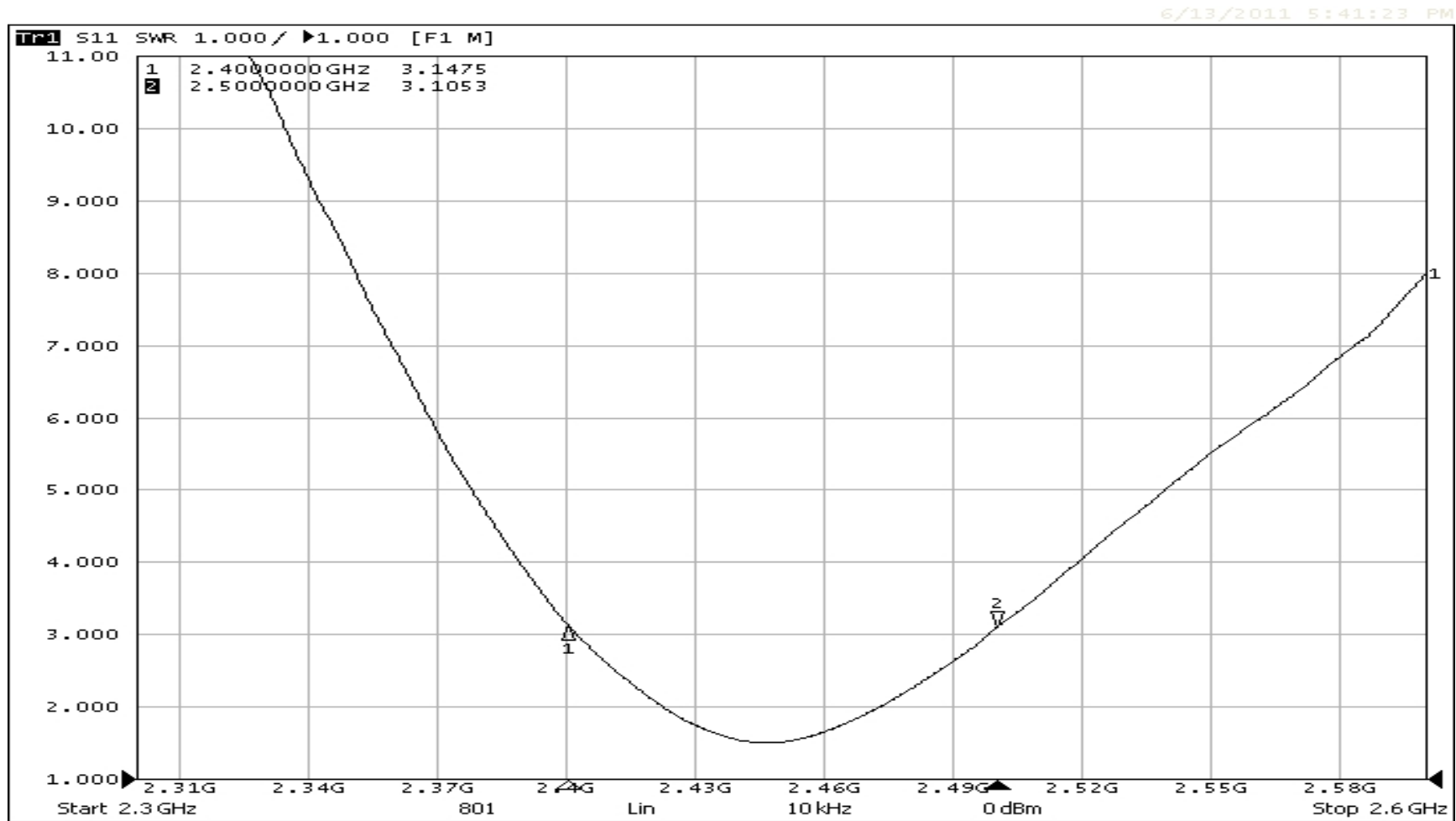
## **Summary for passive measurement data**

---

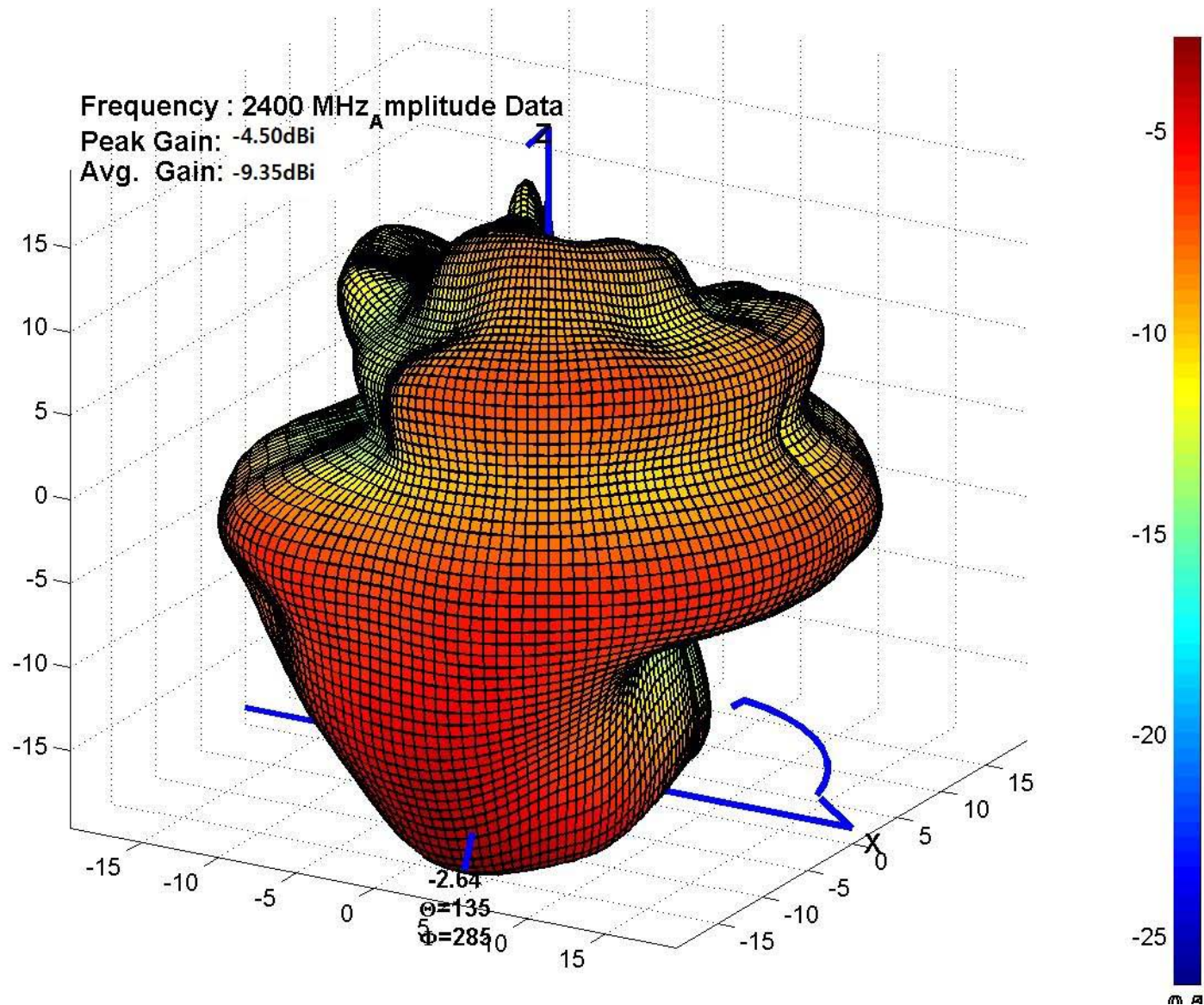
## Summary for passive measurement data I. **\_ 2D Data**

<b>Frequency</b>	<b><i>Eff.</i> (%)</b>	<b><i>Ave. Gain</i> (dBi)</b>	<b><i>Peak Gain</i> (dBi)</b>	<b><i>Directivity</i> (dBi)</b>
2400 MHz	12	-9.35	-4.50	4.85
2444 MHz	14	-8.50	-3.78	4.72
2447 MHz	15	-8.29	-3.47	4.82
2475 MHz	12	-9.12	-4.43	4.69
2485 MHz	13	-8.90	-4.09	4.81
2500 MHz	13	-8.90	-4.27	4.63

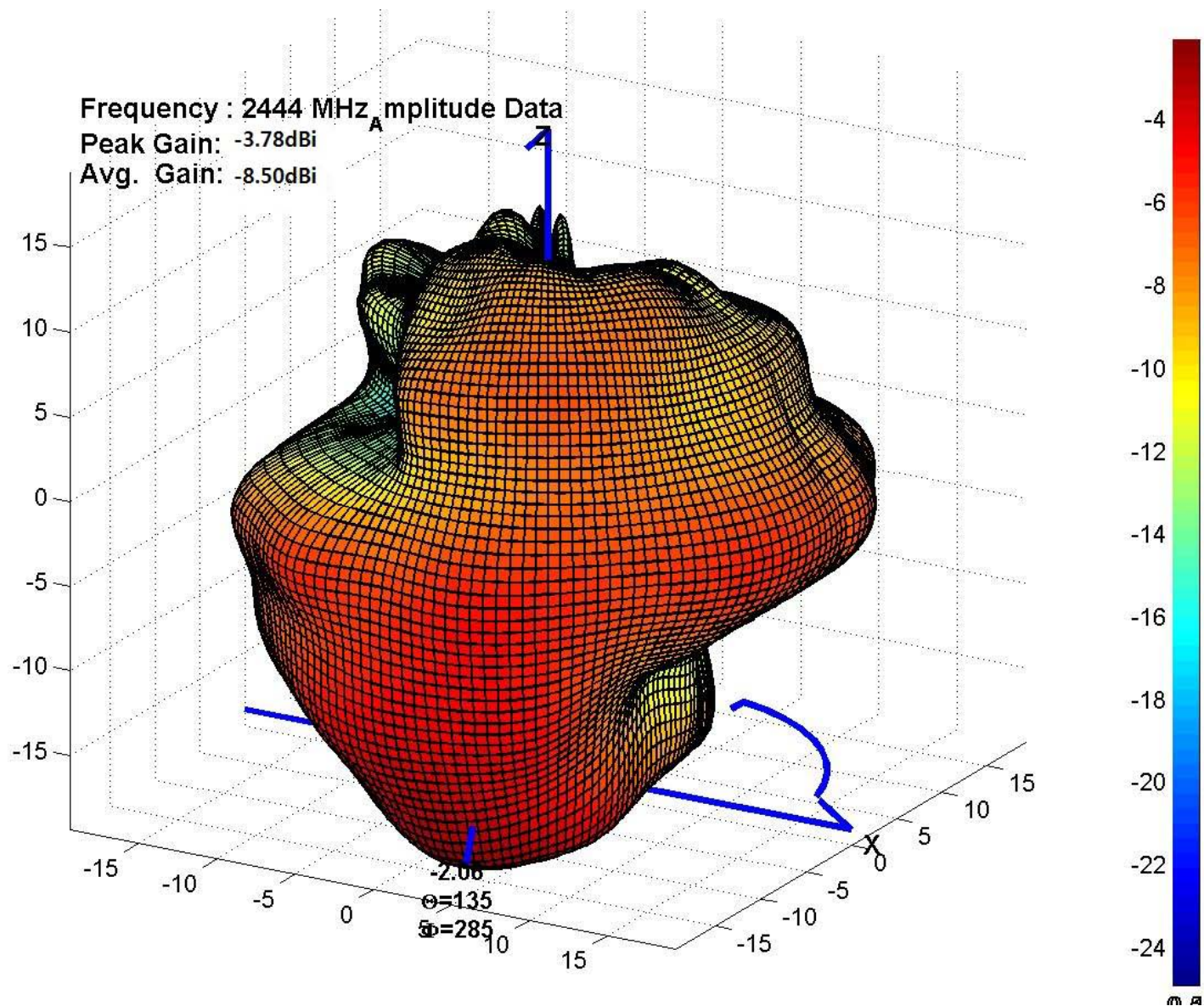
# Summary for passive measurement data II. **VSWR**



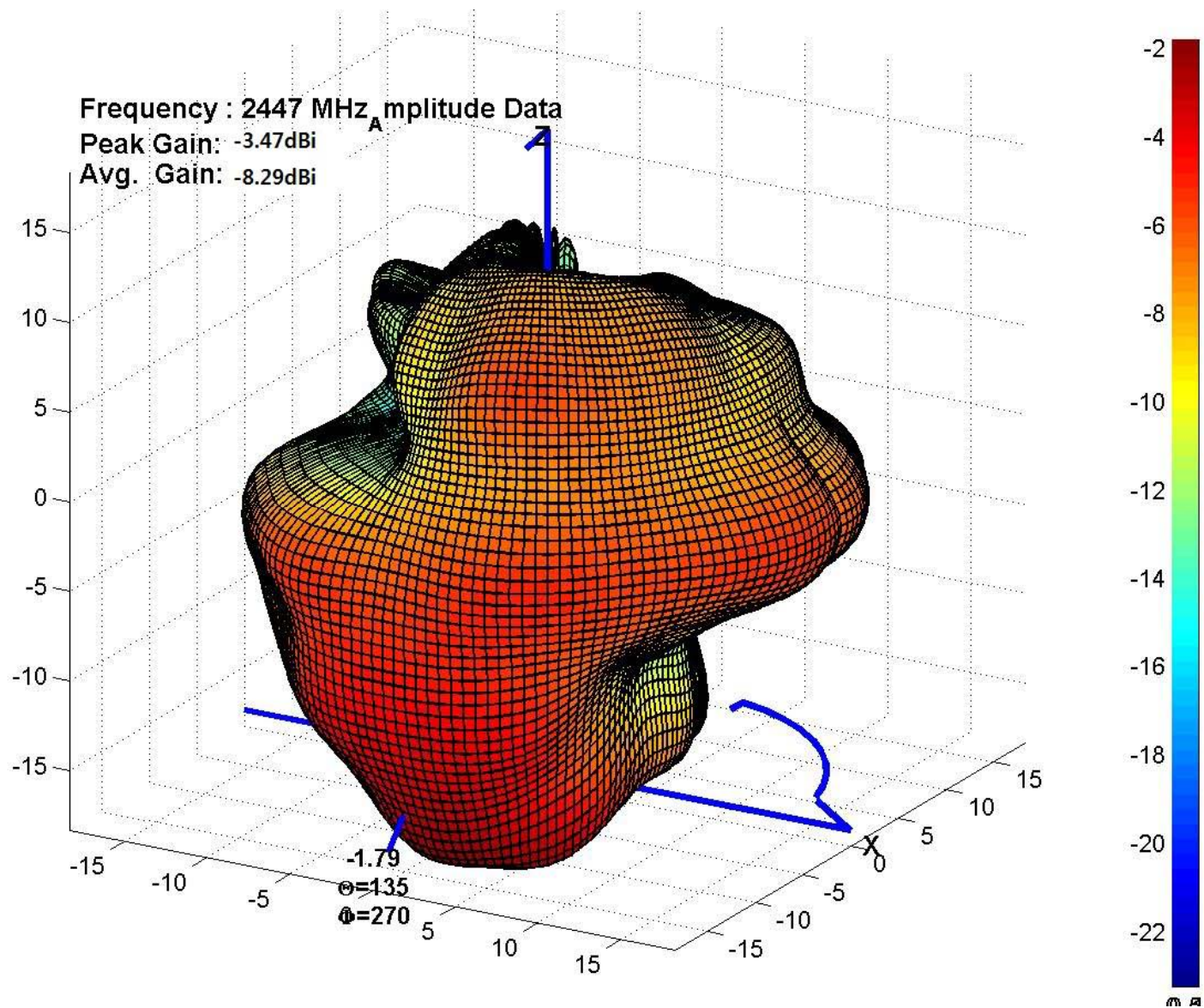
# Summary for passive measurement 2400MHz. **Radiation Pattern**



# Summary for passive measurement data 2444MHz. **Radiation Pattern**

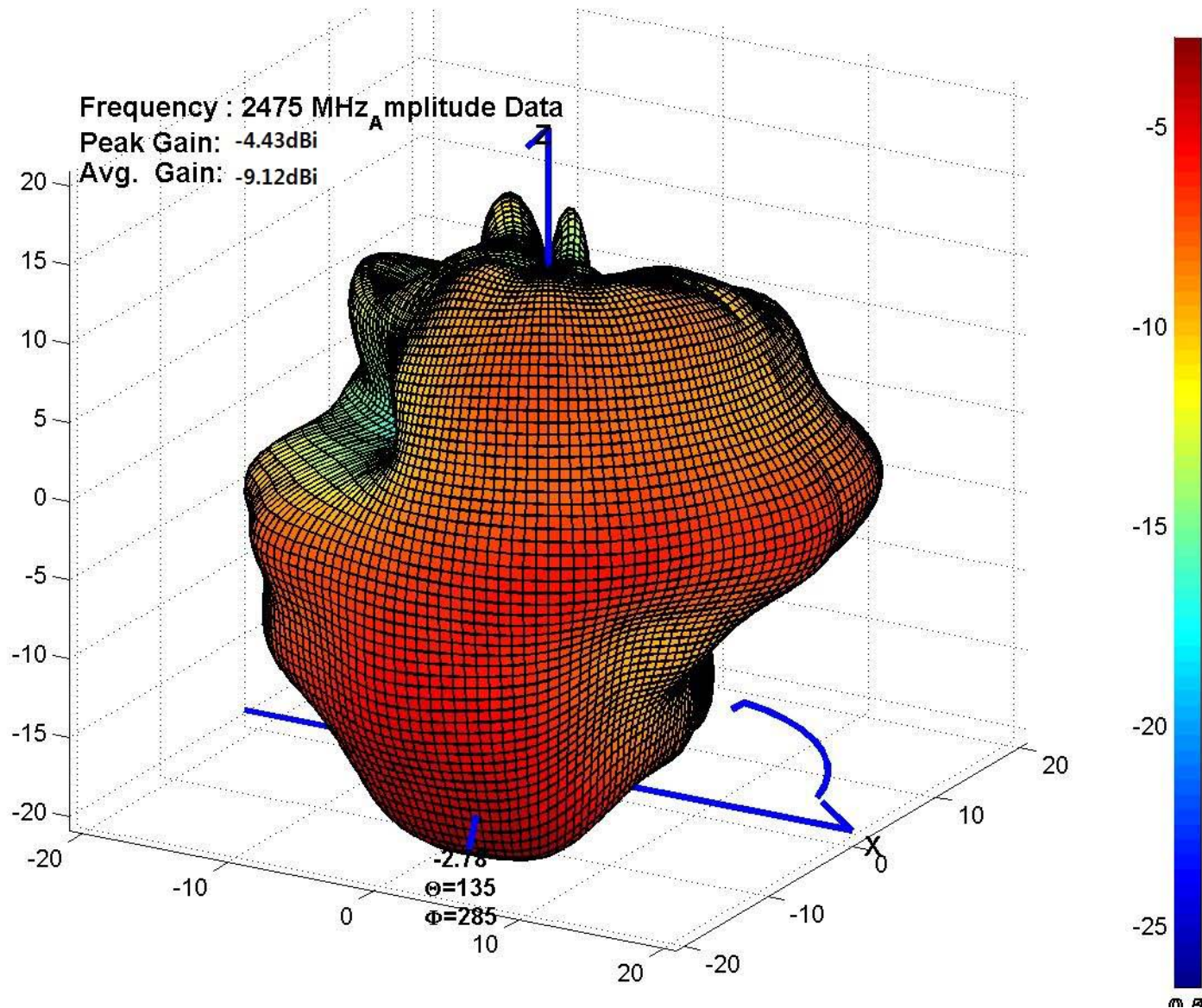


# Summary for passive measurement 2447MHz \_ Radiation Pattern

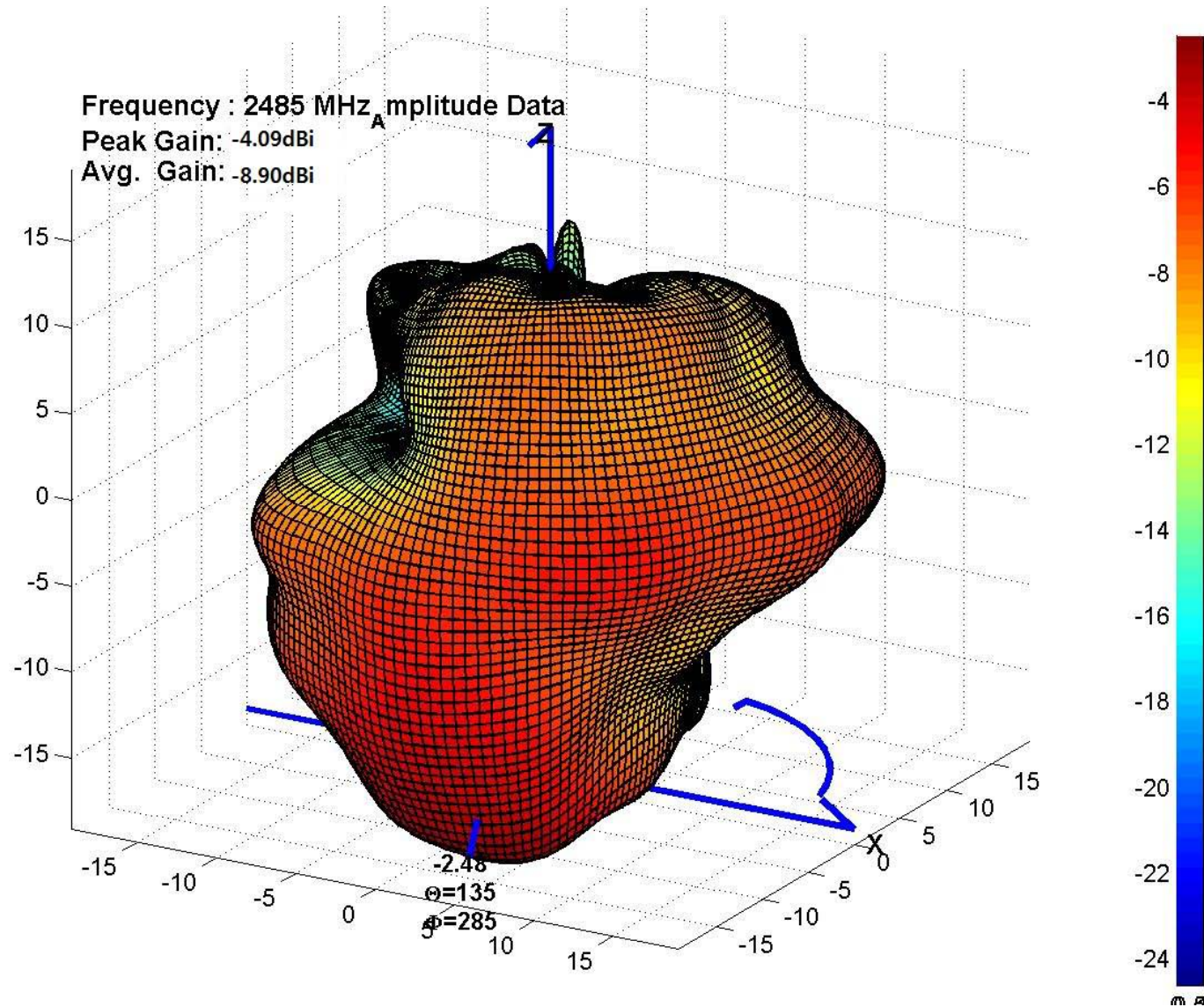




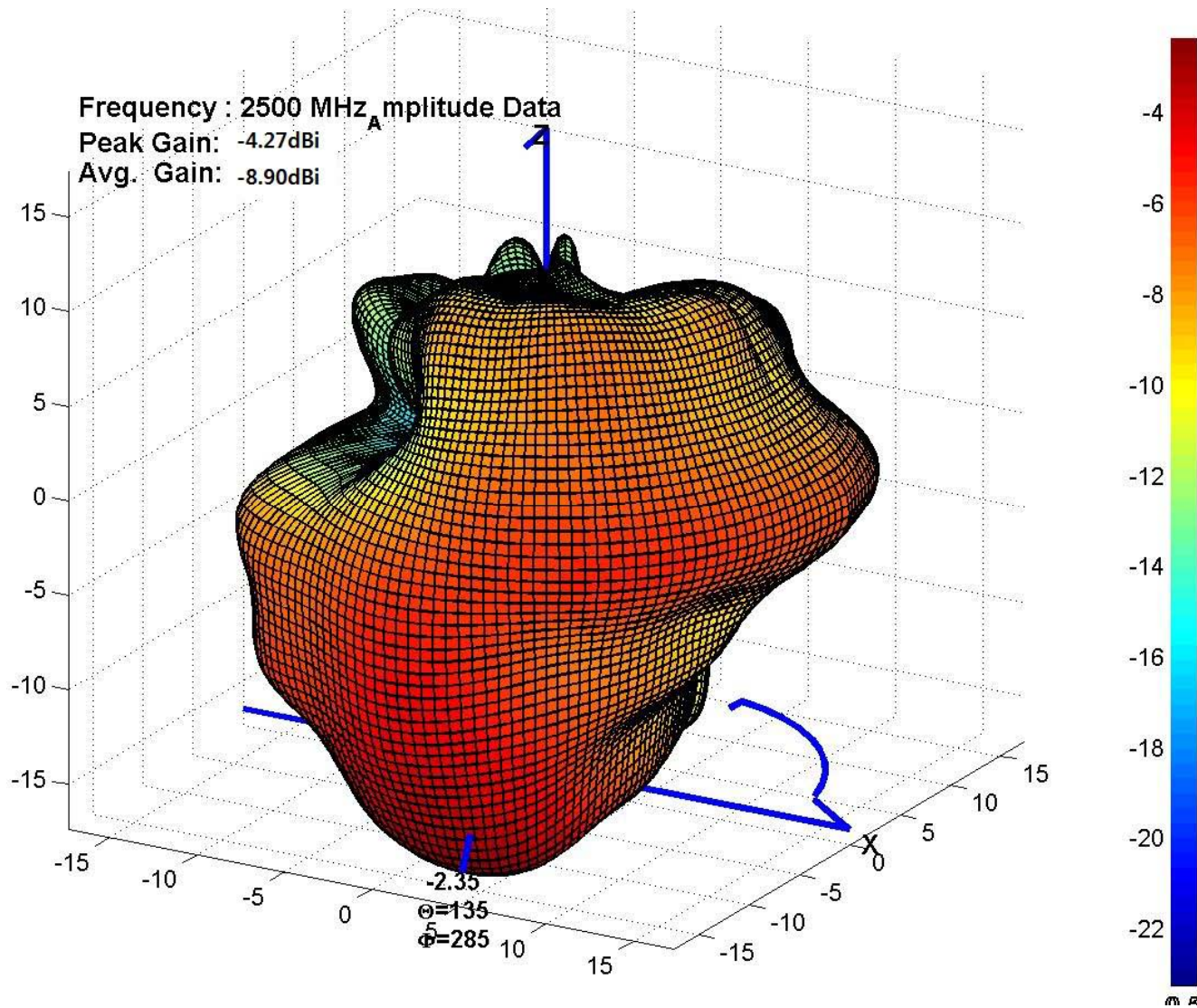
# Summary for passive measurement 2475MHz. \_ Radiation Pattern



# Summary for passive measurement 2485MHz \_ Radiation Pattern

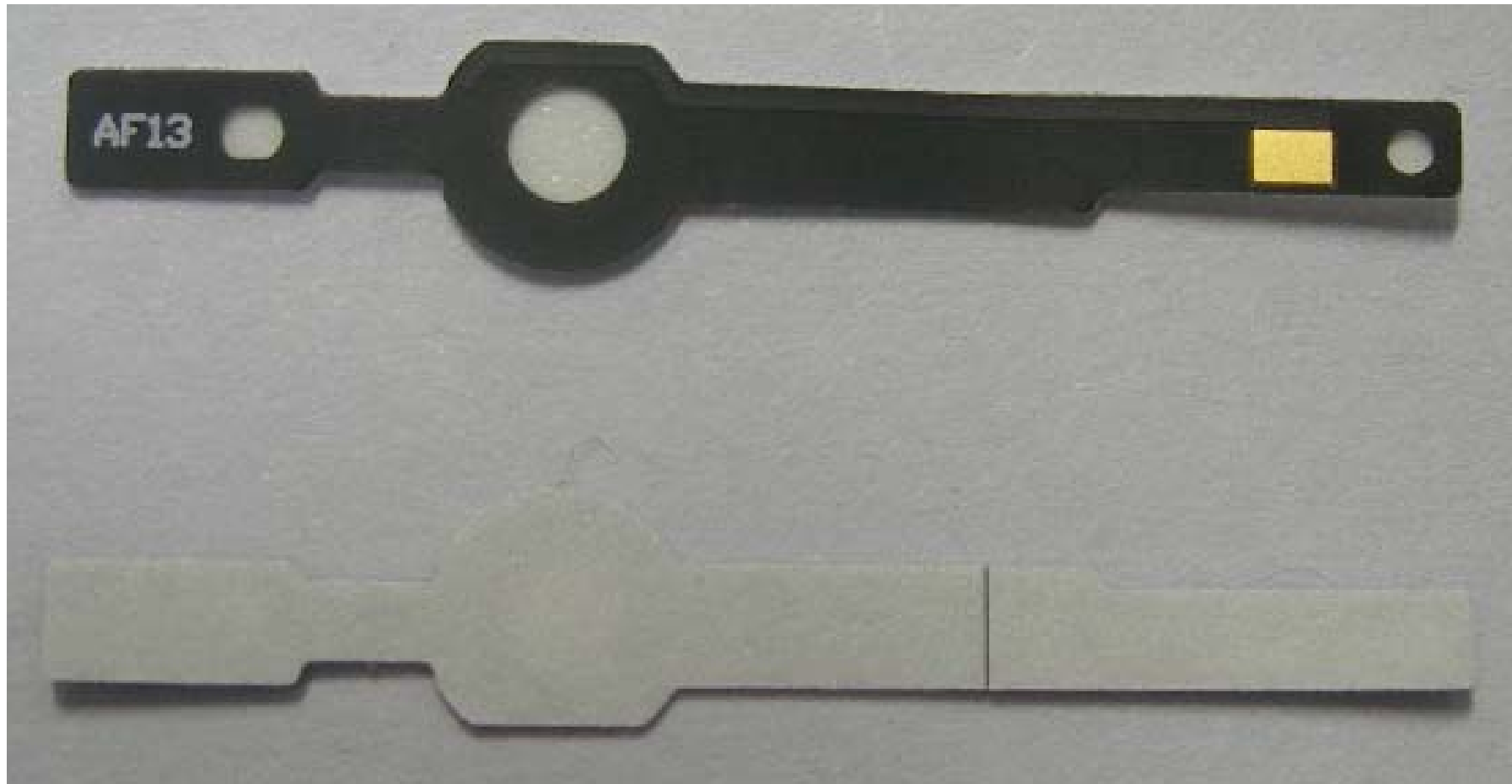


# Summary for passive measurement 2500MHz. \_ Radiation Pattern

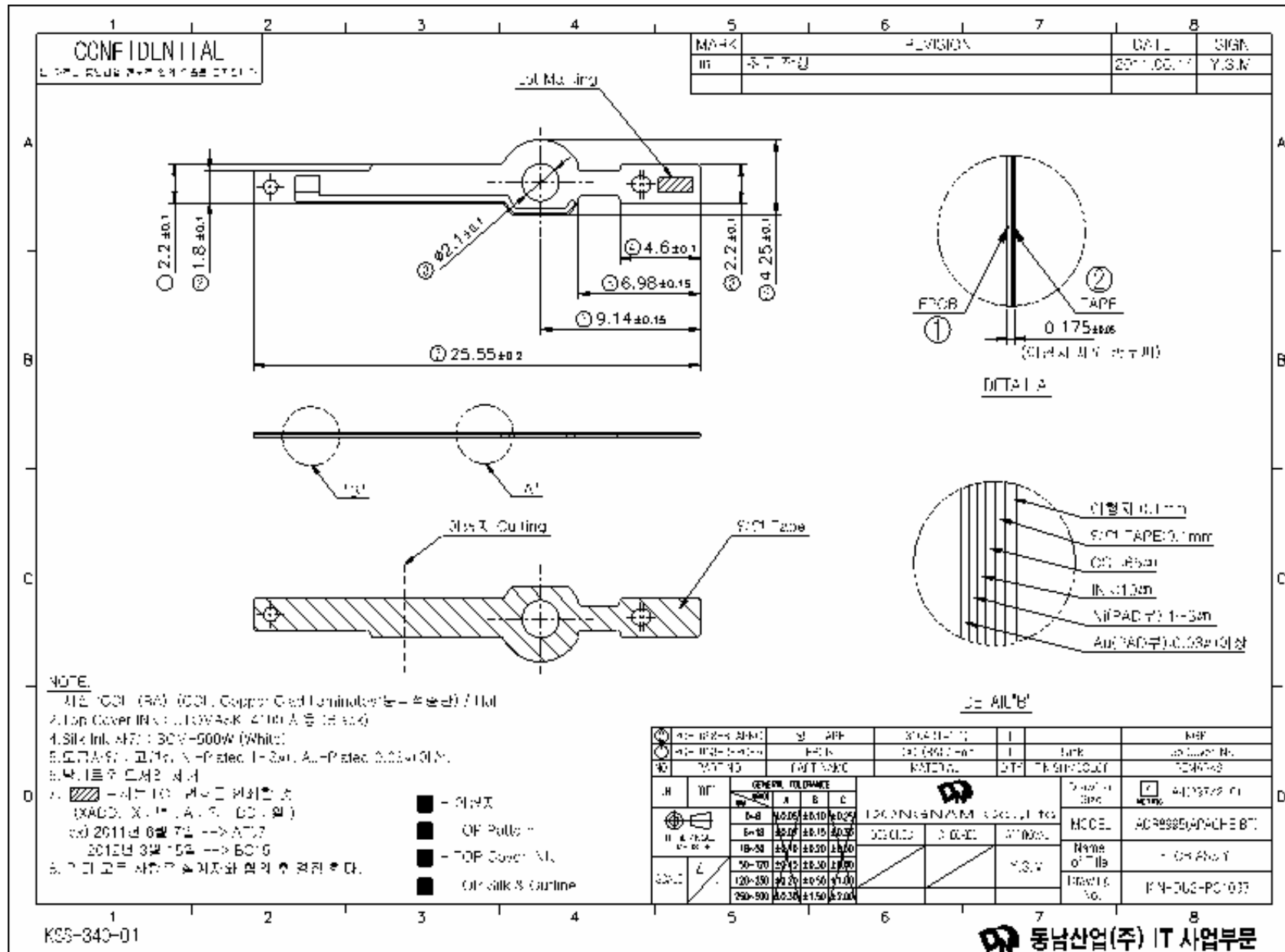


# Picture

---



# Drawing



**Thank you !!**