
SAR Test Report

Report No.: AGC159120401S1


FCC ID : JY9-VZ102MUSIC
Product Designation : GSM Mobile Phone
Brand Name : BESS
Model Name : VZ102music
Client : Bess Mobile HK Limited
Date of Issue : Apr.24,2012
STANDARD(S) : FCC Oet65 Supplement C June 2001
: IEEE Std. 1528-2003,47CFR § 2.1093

Attestation of Global Compliance Co., Ltd.

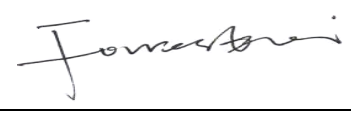
CAUTION: This report shall not be reproduced except in full without the written permission of the test laboratory and shall not be quoted out of context.

Test Report Certification


Applicant Name	:	Bess Mobile HK Limited
Applicant Address	:	Unit 21 15/F Tuen Mun Central Square 22 Hoi Wing Road, Tuen Mun New Territories, Hong Kong
Manufacturer Name	:	GPLUS TELECOM CO., LTD.
Manufacturer Address	:	2nd, Fl., BBuilding, Jiada R&D Building 5 Langshan Rd., North, Hi-tech Industrial Park
Product Designation	:	GSM Mobile Phone
Brand Name	:	BESS
Model Name	:	VZ102music
EUT Voltage	:	DC3.7V(Supply by battery)
Applicable Standard	:	FCC Oet65 Supplement C June 2001 IEEE Std. 1528-2003,47CFR § 2.1093
Test Date	:	Apr.23,2012
Test Results	:	MAX SAR MEASUREMENT(1g) Head: 0.624 W/Kg (Scaling SAR = 0.796 W/Kg) Body: 0.670 W/Kg
Performed Location	:	Attestation of Global Compliance (Shenzhen) Co., Ltd. 2F, No.2 Building, Huafeng No.1 Technical Industrial Park, Sanwei, Xixiang, Bao'an District, Shenzhen, China



 Tested By Angela Li Apr.24,2012



 Checked By Forrest Lei Apr.24,2012



 Authorized By Solger Zhang Apr.24,2012

TABLE OF CONTENTS

- 1. GENERAL INFORMATION..... 3**
 - 1.1. EUT DESCRIPTION..... 3**
 - GMSK FOR GSM/GPRS..... 3**
 - 1.2. TEST PROCEDURE 4**
 - 1.3. TEST ENVIRONMENT 4**
- 2. SAR MEASUREMENT SYSTEM..... 5**
 - 2.1. COMOSAR SYSTEM DESCRIPTION 5**
 - 2.2. COMOSAR E-FIELD PROBE 7**
 - 2.3 ROBOT 7**
 - 2.4. VIDEO POSITIONING SYSTEM 8**
 - 2.5. DEVICE HOLDER 8**
 - 2.6. SAM TWIN PHANTOM 9**
- 3. TISSUE SIMULATING LIQUID 10**
 - 3.1. THE COMPOSITION OF THE TISSUE SIMULATING LIQUID 10**
 - 3.2. TISSUE CALIBRATION RESULT 10**
 - 3.3. TISSUE DIELECTRIC PARAMETERS FOR HEAD AND BODY PHANTOMS 11**
- 4. SAR MEASUREMENT PROCEDURE 11**
 - 4.1. SAR SYSTEM VALIDATION 12**
 - 4.2. SAR MEASUREMENT PROCEDURE 14**
- 5. SAR EXPOSURE LIMITS..... 15**
- 6. TEST EQUIPMENT LIST 16**
- 7. MEASUREMENT UNCERTAINTY 17**
- 8. CONDUCTED POWER MEASUREMENT 18**
- 9. TEST RESULTS..... 19**
 - 9.1. SAR TEST RESULTS SUMMARY..... 19**
- APPENDIX A. SAR SYSTEM VALIDATION DATA..... 24**
- APPENDIX B. SAR MEASUREMENT DATA 26**
- APPENDIX C. TEST SETUP PHOTOGRAPHS &EUT PHOTOGRAPS 54**
- APPENDIX D. PROBE CALIBRATION DATA 61**
- APPENDIX E. DIPOLE CALIBRATION DATA..... 77**

1. General Information

1.1. EUT Description

General Information	
Product Designation	GSM MOBILE PHONE
Test Model	VZ102music
Hardware Version	T5201-MB-V2.0
Software Version	N/A
Device Category	Portable
RF Exposure Environment	Uncontrolled
Antenna Type	Internal
GSM	
Support Band	<input checked="" type="checkbox"/> GSM 850 <input checked="" type="checkbox"/> PCS 1900 (U.S. Bands) <input type="checkbox"/> GSM 900 <input type="checkbox"/> DCS 1800 (Non-U.S. Bands)
TX Frequency Range	GSM 850: 824.2~848.8MHz PCS 1900: 1850.2~1909.8MHz
RX Frequency Range	GSM 850: 869~894MHz PCS 1900: 1930~1990MHz
Release Version	R99
Type of modulation	GMSK for GSM/GPRS
Antenna Gain	1.0dBi
Max. Output Power (Avg. Burst Power)	GSM850: 31.57dBm (32.71dBm Peak Power) PCS1900: 29.25dBm (29.58dBm Peak Power)
Max. Output Power (Radiated)	GSM850: 31.08dBm- ERP PCS1900: 28.83dBm- EIRP
Bluetooth	
Bluetooth Frequency	2402~2480MHz
Type of modulation	<input checked="" type="checkbox"/> GFSK <input checked="" type="checkbox"/> $\pi/4$ -DQPSK <input checked="" type="checkbox"/> 8-DPSK
Data Rate	<input checked="" type="checkbox"/> 1Mbps <input checked="" type="checkbox"/> 2Mbps <input checked="" type="checkbox"/> 3Mbps
Antenna Gain	0.8dBi
Accessories	

Battery	Brand name: BESS Model No. : VZ102music Voltage and Capacitance: 3.7V , 800 mAh
Adapter	Brand name: BESS Model No. : VZ102music Input&Output:AC :100-240V 50-60HZ 0.15Ma DC:5V 500mA
Earphone	Brand name: BESS Model No. : VZ102music

Note: The sample used for testing is end product.

1.2. Test Procedure

1	Setup the EUT and simulators as shown on above.
2	Turn on the power of all equipment.
3	EUT communicate with CMU 200, and test them respectively at GSM 850 & PCS1900 bands

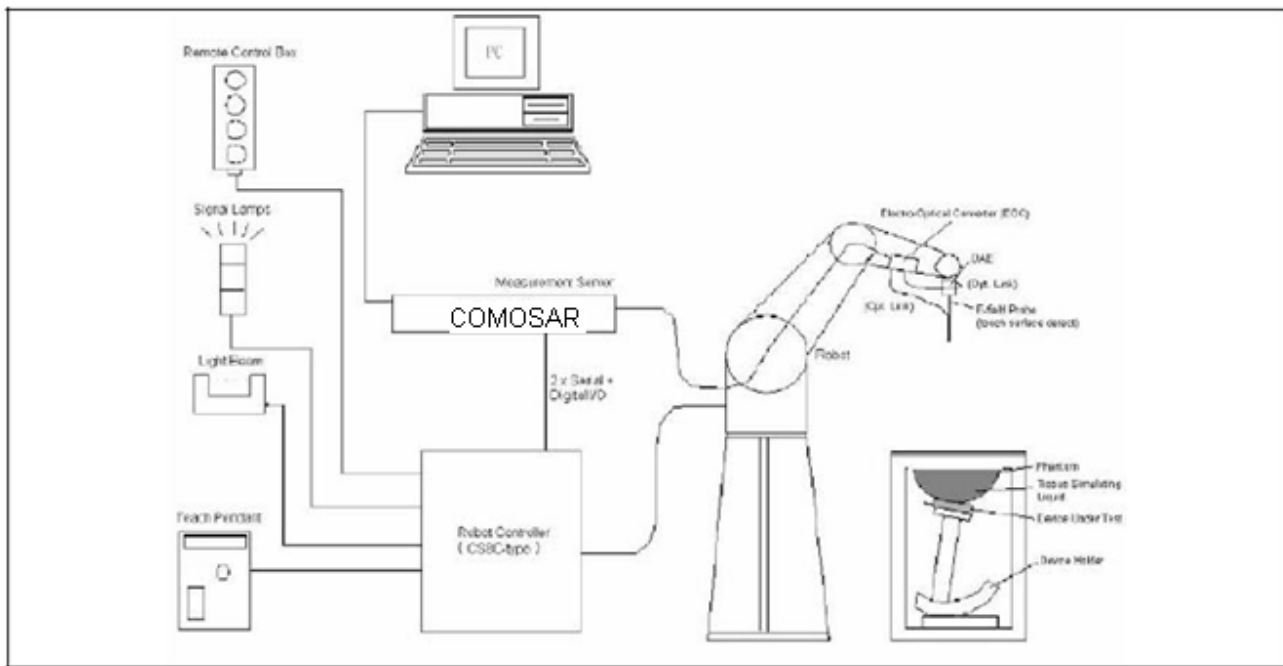
1.3. Test Environment

Ambient conditions in the laboratory:

Items	Required	Actual
Temperature (°C)	18-25	21± 2
Humidity (%RH)	30-70	55±2

2. SAR Measurement System

2.1. COMOSAR System Description



The COMOSAR system for performing compliance tests consists of the following items:

A standard high precision 6-axis robot with controller, teach pendant and software.

An arm extension for accommodating the data acquisition electronics (DAE).

A data acquisition electronics (DAE) which performs the signal amplification, signal multiplexing, AD-conversion, offset measurements, mechanical surface detection, collision detection, etc. The unit is battery powered with standard or rechargeable batteries. The signal is optically transmitted to the EOC.

The Electro-optical converter (EOC) performs the conversion from optical to electrical signals for the digital communication to the DAE. To use optical surface detection, a special version of the EOC is required. The EOC signal is transmitted to the measurement server.

The Light Beam used is for probe alignment. This improves the (absolute) accuracy of the probe positioning.

A computer running WinXP and the Opensar software.

Remote control and teach pendant as well as additional circuitry for robot safety such as warning lamps, etc.

The phantom, the device holder and other accessories according to the targeted measurement.

2.1.1. Applications

Predefined procedures and evaluations for automated compliance testing with all worldwide standards, e.g., IEEE 1528, OET 65, IEC 62209-1, IEC 62209-2, EN 50360, EN 50383 and others.

2.1.2. Area Scans

Area scans are defined prior to the measurement process being executed with a user defined variable spacing between each measurement point (integral) allowing low uncertainty measurements to be conducted. Scans defined for FCC applications utilize a 10mm² step integral, with 1mm interpolation used to locate the peak SAR area used for zoom scan assessments.

When an Area Scan has measured all reachable points, it computes the field maxima found in the scanned area, within a range of the global maximum. The range (in dB) is specified in the standards for compliance testing. For example, a 2 dB range is required in IEEE 1528-2003, EN 50361 and IEC 62209 standards, whereby 3 dB is a requirement when compliance is assessed in accordance with the ARIB standard (Japan).

2.1.3. Zoom Scan (Cube Scan Averaging)

Zoom Scans are used to assess the peak spatial SAR values within a cubic averaging volume containing 1 g and 10 g of simulated tissue. A density of 1000 kg/m³ is used to represent the head and body tissue density and not the phantom liquid density, in order to be consistent with the definition of the liquid dielectric properties, i.e. the side length of the 1 g cube is 10mm, with the side length of the 10 g cube 21,5mm.

The zoom scan integer steps can be user defined so as to reduce uncertainty, but normal practice for typical test applications utilize a physical step of 7x7x7 (5mmx5mmx5mm) providing a volume of 30mm in the X & Y axis, and 30mm in the Z axis.

2.1.4. Uncertainty of Inter-/Extrapolation and Averaging

In order to evaluate the uncertainty of the interpolation, extrapolation and averaged SAR calculation algorithms of the Post processor, COMOSAR allows the generation of measurement grids which are artificially predefined by analytically based test functions. Therefore, the grids of area scans and zoom scans can be filled with uncertainty test data, according to the SAR benchmark functions of IEEE 1528. The three analytical functions shown in equations as below are used to describe the possible range of the expected SAR distributions for the tested handsets. The field gradients are covered by the spatially flat distribution f1, the spatially steep distribution f3 and f2 accounts for H-field cancellation on the phantom/tissue surface.

$$f_1(x, y, z) = A e^{-\frac{z}{2a}} \cos^2 \left(\frac{\pi \sqrt{x'^2 + y'^2}}{2 \cdot 5a} \right)$$

$$f_2(x, y, z) = A e^{-\frac{z}{a}} \frac{a^2}{a^2 + x'^2} \left(3 - e^{-\frac{2z}{a}} \right) \cos^2 \left(\frac{\pi y'}{2 \cdot 3a} \right)$$

$$f_3(x, y, z) = A \frac{a^2}{\frac{a^2}{4} + x'^2 + y'^2} \left(e^{-\frac{2z}{a}} + \frac{a^2}{2(a + 2z)^2} \right)$$

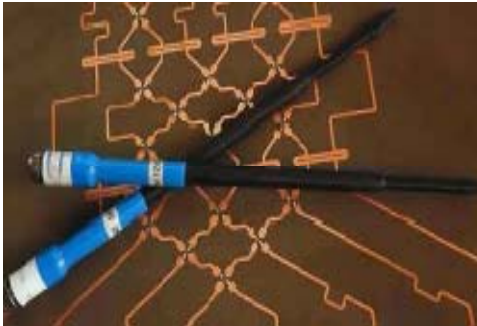
2.2. COMOSAR E-Field Probe

The SAR measurement is conducted with the dissymmetric probe manufactured by SPEAG.

The probe is specially designed and calibrated for use in liquid with high permittivity. The dissymmetric probe has special calibration in liquid at different frequency.

SPEAG conducts the probe calibration in compliance with international and national standards (e.g. IEEE 1528, EN62209-1, IEC 62209, etc.) Under ISO17025. The calibration data are in Appendix D.

2.2.1. Isotropic E-Field Probe Specification

Model	SSE5	
Manufacture	Satimo	
frequency	0.3 GHz-3 GHz Linearity:±0.2dB(300 MHz-3 GHz)	
Dynamic Range	0.01W/Kg-100W/Kg Linearity:±0.2dB	
Dimensions	Overall length:330mm Length of individual dipoles:4.5mm Maximum external diameter:8mm Probe Tip external diameter:5mm Distance between dipoles/ probe extremity:2.7mm	
Application	High precision dosimetric measurements in any exposure scenario (e.g., very strong gradient fields). Only probe which enables compliance testing for frequencies up to 3 GHz with precision of better 30%.	

2.3 Robot

The COMOSAR system uses the high precision robots TX90 XL type out of the newer series from Satimo SA (France).For the 6-axis controller COMOSAR system, the KUKA robot controller version from Satimo is used.

The XL robot series have many features that are important for our application:

- High precision (repeatability 0.02 mm)
- High reliability (industrial design)
- Jerk-free straight movements
- Low ELF interference (the closed metallic construction shields against motor control fields)
- 6-axis controller



2.4. Video Positioning System

The video positioning system is used in OpenSAR to check the probe. Which is composed of a camera, LED, mirror and mechanical parts. The camera is piloted by the main computer with firewire link.

During the process, the actual position of the probe tip with respect to the robot arm is measured, as well as the probe length and the horizontal probe offset. The software then corrects all movements, such that the robot coordinates are valid for the probe tip.

The repeatability of this process is better than 0.1 mm. If a position has been taught with an aligned probe, the same position will be reached with another aligned probe within 0.1 mm, even if the other probe has different dimensions. During probe rotations, the probe tip will keep its actual position.

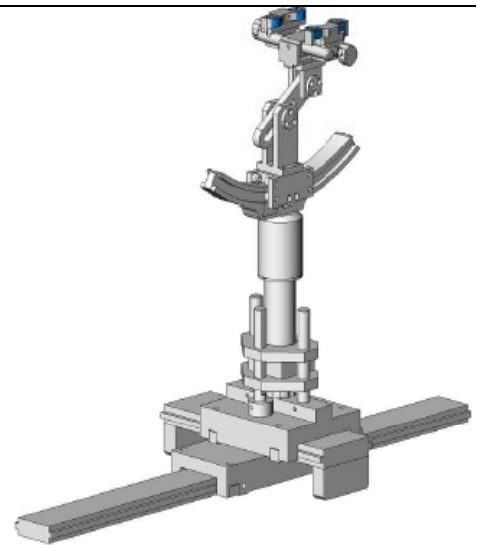


2.5. Device Holder

The COMOSAR device holder is designed to cope with different positions given in the standard. It has two scales for the device rotation (with respect to the body axis) and the device inclination (with respect to the line between the ear reference points). The rotation center for both scales is the ear reference point (EPR).

Thus the device needs no repositioning when changing the angles.

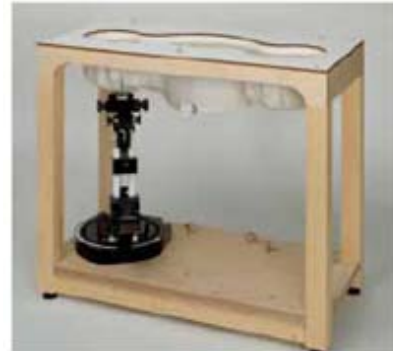
The COMOSAR device holder has been made out of low-loss POM material having the following dielectric parameters: relative permittivity $\epsilon_r = 3$ and loss tangent $\delta = 0.02$. The amount of dielectric material has been reduced in the closest vicinity of the device, since measurements have suggested that the influence of the clamp on the test results could thus be lowered.



2.6. SAM Twin Phantom

The SAM twin phantom is a fiberglass shell phantom with 2mm shell thickness (except the ear region where shell thickness increases to 6mm). It has three measurement areas:

- Left head
- Right head
- Flat phantom



The bottom plate contains three pair of bolts for locking the device holder. The device holder positions are adjusted to the standard measurement positions in the three sections. A white cover is provided to tap the phantom during off-periods to prevent water evaporation and changes in the liquid parameters. On the phantom top, three reference markers are provided to identify the phantom position with respect to the robot.

3. Tissue Simulating Liquid

3.1. The composition of the tissue simulating liquid

Ingredient	835MHz	835MHz	1900MHz	1900MHz
(% Weight)	Head	Body	Head	Body
Water	40.45	52.4	54.90	40.5
Salt	1.45	1.40	0.18	0.50
Sugar	57.6	45.0	0.00	58.0
HEC	0.40	1.00	0.00	0.50
Preventol	0.10	0.20	0.00	0.50
DGBE	0.00	0.00	44.92	0.00

3.2. Tissue Calibration Result

The dielectric parameters of the liquids were verified prior to the SAR evaluation using COMOSAR Dielectric Probe Kit and R&S Network Analyzer ZVL6 .

Head Tissue Stimulant Measurement				
Frequency (MHz)	Description	Dielectric Parameters		Tissue Temp [°C]
835MHz	Reference result ±5% window	ϵ_r 41.50 39.43-43.58	δ [s/m] 0.90 0.86-0.95	N/A
	Apr.23,2012	42.88	0.92	21

Body Tissue Stimulant Measurement				
Frequency (MHz)	Description	Dielectric Parameters		Tissue Temp [°C]
835MHz	Reference result ±5% window	ϵ_r 55.20 52.44-57.96	δ [s/m] 0.97 0.92-1.02	N/A
	Apr.23,2012	55.44	0.99	21

Head Tissue Stimulant Measurement				
Frequency (MHz)	Description	Dielectric Parameters		Tissue Temp [°C]
1900MHz	Reference result ±5% window	ϵ_r 40.00 38.00-42.00	$\bar{\delta}$ [s/m] 1.40 1.33-1.47	N/A
	Apr.23,2012	40.56	1.43	21

Body Tissue Stimulant Measurement				
Frequency (MHz)	Description	Dielectric Parameters		Tissue Temp [°C]
1900MHz	Reference result ±5% window	ϵ_r 53.30 50.64-55.97	$\bar{\delta}$ [s/m] 1.52 1.44-1.60	N/A
	Apr.23,2012	53.49	1.57	21

3.3. Tissue Dielectric Parameters for Head and Body Phantoms

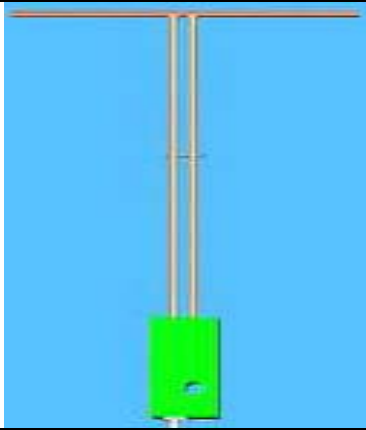
The head tissue dielectric parameters recommended by the IEEE SCC-34/SC-2 in P1528 have been incorporated in the following table. These head parameters are derived from planar layer models simulating the highest expected SAR for the dielectric properties and tissue thickness variations in a human head. Other head and body tissue parameters that have not been specified in P1528 are derived from the tissue dielectric parameters computed from the 4-Cole-Cole equations described in Reference [12] and extrapolated according to the head parameters specified in P1528.

Target Frequency (MHz)	head		body	
	ϵ_r	σ (S/m)	ϵ_r	σ (S/m)
300	45.3	0.87	58.2	0.92
450	43.5	0.87	56.7	0.94
835	41.5	0.90	55.2	0.97
900	41.5	0.97	55.0	1.05
915	41.5	0.98	55.0	1.06
1450	40.5	1.20	54.0	1.30
1610	40.3	1.29	53.8	1.40
1800 – 2000	40.0	1.40	53.3	1.52
2450	39.2	1.80	52.7	1.95
3000	38.5	2.40	52.0	2.73
5800	35.3	5.27	48.2	6.00

(ϵ_r = relative permittivity, σ = conductivity and $\rho = 1000 \text{ kg/m}^3$)

4. SAR Measurement Procedure

4.1. SAR System Validation
4.1.1. Validation Dipoles

	<p>The dipoles used is based on the IEEE-1528 standard, and is complied with mechanical and electrical specifications in line with the requirements of both IEEE and FCC Supplement C. the table below provides details for the mechanical and electrical Specifications for the dipoles.</p>
---	---

Frequency	L (mm)	h (mm)	d (mm)
900 MHz	149.0	83.3	3.6
1900MHz	68	39.5	3.6

4.1.2. Validation Result

System Performance Check at 835 MHz &1900MHz for Head				
Validation Kit: SN 46/11DIP 0G900-185				
Frequency [MHz]	Description	SAR [w/kg] 1g	SAR [w/kg] 10g	Tissue Temp.[°C]
900 MHz	Reference result ± 10% window	10.9 9.81 to 11.99	6.99 6.29 to 7.69	N/A
	Apr.23,2012	10.758	6.64	21.0
Validation Kit: SN 46/11DIP 1G900-187				
Frequency [MHz]	Description	SAR [w/kg] 1g	SAR [w/kg] 10g	Tissue Temp.[°C]
1900 MHz	Reference result ± 10% window	39.7 35.73 to 43.67	20.5 18.45 to 22.55	N/A
	Apr.23,2012	42.67	21.77	21.0
Note: All SAR values are normalized to 1W forward power.				

4.2. SAR Measurement Procedure

The COMOSAR calculates SAR using the following equation,

$$SAR = \frac{\sigma |E|^2}{\rho}$$

σ : represents the simulated tissue conductivity

ρ : represents the tissue density

The EUT is set to transmit at the required power in line with product specification, at each frequency relating to the LOW, MID, and HIGH channel settings.

Pre-scans are made on the device to establish the location for the transmitting antenna, using a large area scan in either air or tissue simulation fluid.

The EUT is placed against the Universal Phantom where the maximum area scan dimensions are larger than the physical size of the resonating antenna. When the scan size is not large enough to cover the peak SAR distribution, it is modified by either extending the area scan size in both the X and Y directions, or the device is shifted within the predefined area.

The area scan is then run to establish the peak SAR location (interpolated resolution set at 1mm²) which is then used to orient the center of the zoom scan. The zoom scan is then executed and the 1g and 10g averages are derived from the zoom scan volume (interpolated resolution set at 1mm³).

When multiple peak SAR locations were found during the same configuration or test mode, Zoom scan shall performed on each peak SAR location, only the peak point with maximum SAR value will be reported for the configuration or test mode.

5. SAR Exposure Limits

SAR assessments have been made in line with the requirements of IEEE-1528, FCC Supplement C, and comply with ANSI/IEEE C95.1-1992 “Uncontrolled Environments” limits. These limits apply to a location which is deemed as “Uncontrolled Environment” which can be described as a situation where the general public may be exposed to an RF source with no prior knowledge or control over their exposure.

Limits for General Population/Uncontrolled Exposure (W/kg)

Type Exposure	Uncontrolled Environment Limit
Spatial Peak SAR (1g cube tissue for brain or body)	1.60 W/kg
Spatial Average SAR (whole body)	0.08 W/kg
Spatial Peak SAR (10g for hands, feet, ankles and wrist)	4.00 W/kg

6. Test Equipment List

Equipment description	Manufacturer/Model	Identification No.	Current calibration date	Next calibration date
SAR Probe	Satimo	SN_3511_EP132	12/09/2011	12/08/2012
Phantom	Satimo	SN_4511_SAM90	Validated. No cal required.	Validated. No cal required.
Liquid	Satimo	-	Validated. No cal required.	Validated. No cal required.
Comm Tester	R&S - CMU200	069Y7-158-13-712	12/09/2011	12/08/2012
Multimeter	Keithley 2000	1188656	12/09/2011	12/08/2012
Dipole	Satimo SID900	SN46/11 DIP 0G900-185	12/09/2011	12/08/2014
Dipole	Satimo SID1900	SN46/11 DIP 1G900-187	12/09/2011	12/08/2014
Amplifier	Aethercomm	SN 046	12/09/2011	12/08/2012
Power Meter	HP E4418A	US38261498	03/30/2012	03/29/2013
Network Analyzer	Rhode & Schwarz ZVA	SN100132	02/07/2012	02/06/2013

Note: Per KDB 50824 Dipole SAR Validation Verification, AGC Lab has adopted 3 years calibration intervals. On annual basis, every measurement dipole has been evaluated and is in compliance with the following criteria:

1. There is no physical damage on the dipole;
2. System validation with specific dipole is within 10% of calibrated value;
3. Return-loss is within 20% of calibrated measurement;
4. Impedance is within 5Ω of calibrated measurement.

7. Measurement Uncertainty

Satimo Uncertainty									
Measurement uncertainty for 300 MHz to 3 GHz averaged over 1 gram / 10 gram.									
Error Description	Sec	Tol (±%)	Prob. Dist.	Div.	(Ci) 1g	(Ci) 10g	Std. Unc. (1g) (±%)	Std. Unc. (10g)(±%)	(Vi) Veff
Measurement System									
Probe Calibration	E.2.1	6	N	1	1	1	6	6	∞
Axial Isotropy	E.2.2	3	R	$\sqrt{3}$	$(1-c_D)^{1/2}$	$(1-c_D)^{1/2}$	1.22474	1.22474	∞
Hemispherical Isotropy	E.2.2	5	R	$\sqrt{3}$	$\sqrt{C_p}$	$\sqrt{C_p}$	2.04124	2.04124	∞
Boundary Effects	E.2.3	1	R	$\sqrt{3}$	1	1	0.57735	0.57735	∞
Linearity	E.2.4	5	R	$\sqrt{3}$	1	1	2.88675	2.88675	∞
System Detection Limits	E.2.5	1	R	$\sqrt{3}$	1	1	0.57735	0.57735	∞
Readout Electronics	E.2.6	0.5	N	1	1	1	0.5	0.5	∞
Response Time	E.2.7	0.2	R	$\sqrt{3}$	1	1	0.11547	0.11547	∞
Integration Time	E.2.8	2	R	$\sqrt{3}$	1	1	1.1547	1.1547	∞
RF Ambient Noise	E.6.1	3	R	$\sqrt{3}$	1	1	1.73205	1.73205	∞
Probe Positioner Mechanical Tolerance	E.6.2	2	R	$\sqrt{3}$	1	1	1.1547	1.1547	∞
Probe Positioning with Respect to Phantom Shell	E.6.3	1	R	$\sqrt{3}$	1	1	0.57735	0.57735	∞
Extrapolation, interpolation and Integration Algorithms for Max. SAR Evaluation	E.5.2	1.5	R	$\sqrt{3}$	1	1	0.86603	0.86603	∞
Dipole									
Device Positioning	8,E.4.2	1	N	$\sqrt{3}$	1	1	0.57735	0.57735	N-1
Power Drift	8.6.6.2	2	R	$\sqrt{3}$	1	1	1.1547	1.1547	∞
Phantom and Tissue Parameters									
Phantom Uncertainty	E.3.1	4	R	$\sqrt{3}$	1	1	2.3094	2.3094	∞
Liquid Conductivity (target)	E.3.2	5	R	$\sqrt{3}$	0.64	0.43	1.84752	1.2413	∞
Liquid Conductivity (meas.)	E.3.3	2.5	N	1	0.64	0.43	1.6	1.075	∞
Liquid Permittivity (target)	E.3.2	3	R	$\sqrt{3}$	0.6	0.49	1.03923	0.8487	∞
Liquid Permittivity (meas.)	E.3.3	2.5	N	1	0.6	0.49	1.5	1.225	M
Combined Standard Uncertainty			RSS				8.09272	7.9296	
Expanded Uncertainty (95%CONFIDENCE INTERVAL)			k				16.18544	15.8594	

8. Conducted Power Measurement

Mode	Frequency(MHz)	Peak Power	Avg. Burst Power	Duty cycle Factor(dB)	Frame Power(dBm)
Maximum Power					
GSM 850	824.2	32.64	31.49	-9	22.49
	836.6	32.67	31.53	-9	22.53
	848.8	32.71	31.57	-9	22.57
PCS1900	1850.2	29.47	29.18	-9	20.18
	1880	29.51	29.22	-9	20.22
	1909.8	29.58	29.25	-9	20.25

Note 1:

The Frame Power (Source-based time-averaged Power) is scaled the maximum burst average power based on time slots. The calculated methods are show as following:

9. Test Results

9.1. SAR Test Results Summary

9.1.1. Test position and configuration

Head SAR was performed with the device configured in the positions according to IEEE1528, and Body SAR was performed with the device 15mm from the phantom. Body SAR was also performed with the headset attached and without.

9.1.2. Body SAR with Headset

Testing with the headset was performed at the position and channels that resulted in the highest body SAR. SAR without the headset attached was significantly higher than with the headset, and also was verified several times and confirmed, so the final test data shown were the worst case without headset. In the Body SAR test result table, body-worn means display of device down, body-front means display of device up.

9.1.3. Operation Mode

The device doesn't support GPRS. Additionally, this device doesn't support dual transfer mode (DTM).

9.1.4. Co-located SAR

According to KDB 447498 and KDB 648474, due to the Max peak power for Bluetooth is less than Pref and the Maximum SAR for GSM part $< 1.2\text{W/Kg}$, thus, regardless the closest separation distance between the GSM antenna and Bluetooth Antenna, stand-alone SAR and simultaneous transmission SAR is not required.

Other reference document: KDB 941225.

9.1.5. Test Result

SAR MEASUREMENT									
Ambient Temperature (°C) : 21 ± 2						Relative Humidity (%): 55			
Liquid Temperature (°C) : 21 ± 2						Depth of Liquid (cm):>15			
Product: GSM MOBILE PHONE									
Test Mode: GSM850 with GMSK modulation									
Configuration			Antenna Position	Frequency		Frame Power (dBm)	Power Drift (<±0.2 dB)	SAR (1g) (W/kg)	Limit (W/kg)
SIM	Position	Status		channel	MHz				
<1>	Left Head	Cheek	Fixed	128	824.2	22.49	--	--	1.6
				190	836.6	22.53	-0.02	0.597	1.6
				251	848.8	22.57	--	--	1.6
		Tilted	Fixed	128	824.2	22.49	--	--	1.6
				190	836.6	22.53	-0.04	0.428	1.6
				251	848.8	22.57	--	--	1.6
	Right Head	Cheek	Fixed	128	824.2	22.49	--	--	1.6
				190	836.6	22.53	-0.01	0.684	1.6
				251	848.8	22.57	--	--	1.6
		Tilted	Fixed	128	824.2	22.49	--	--	1.6
				190	836.6	22.53	-0.03	0.439	1.6
				251	848.8	22.57	--	--	1.6

Note: when the 1-g SAR is ≤ 0.8 W/kg, testing for low and high channel is optional. refer to KDB 941225.

SAR MEASUREMENT									
Ambient Temperature (°C) : 21 ± 2						Relative Humidity (%): 55			
Liquid Temperature (°C) : 21 ± 2						Depth of Liquid (cm):>15			
Product: GSM MOBILE PHONE									
Test Mode: GSM850 with GMSK modulation									
Configuration			Antenna Position	Frequency		Frame Power (dBm)	Power Drift (<±0.2 dB)	SAR (1g) (W/kg)	Limit (W/kg)
SIM	Position	Status		channel	MHz				
<1>	Body Front	MS	Fixed	128	824.2	22.49	--	--	1.6
				190	836.6	22.53	-0.03	0.320	1.6
				251	848.8	22.57	--	--	1.6
	Body Back	MS	Fixed	128	824.2	22.49	--	--	1.6
				190	836.6	22.53	-0.01	0.670	1.6
				251	848.8	22.57	--	--	1.6
		MS Earphone	Fixed	128	824.2	22.49	--	--	1.6
				190	836.6	22.53	-0.02	0.372	1.6
				251	848.8	22.57	--	--	1.6

Note: when the 1-g SAR is ≤ 0.8 W/kg, testing for low and high channel is optional. refer to KDB 941225.

SAR MEASUREMENT									
Ambient Temperature (°C) : 21 ± 2						Relative Humidity (%): 55			
Liquid Temperature (°C) : 21 ± 2						Depth of Liquid (cm):>15			
Product: GSM MOBILE PHONE									
Test Mode: PCS1900 with GMSK modulation									
Configuration			Antenna Position	Frequency		Frame Power (dBm)	Power Drift (<±0.2 dB)	SAR (1g) (W/kg)	Limit (W/kg)
SIM	Position	Status		channel	MHz				
<1>	Left Head	Cheek	Fixed	512	1850.2	20.18	--	--	1.6
				661	1880.0	20.22	-0.02	0.577	1.6
				810	1909.8	20.25	--	--	1.6
		Tilted	Fixed	512	1850.2	20.18	--	--	1.6
				661	1880.0	20.22	-0.01	0.6%	1.6
				810	1909.8	20.25	--	--	1.6
	Right Head	Cheek	Fixed	512	1850.2	20.18	--	--	1.6
				661	1880.0	20.22	0.03	0.570	1.6
				810	1909.8	20.25	--	--	1.6
		Tilted	Fixed	512	1850.2	20.18	--	--	1.6
				661	1880.0	20.22	-0.04	0.552	1.6
				810	1909.8	20.25	--	--	1.6

Note: when the 1-g SAR is ≤ 0.8 W/kg, testing for low and high channel is optional. refer to KDB 941225.

SAR MEASUREMENT									
Ambient Temperature (°C) : 21 ± 2						Relative Humidity (%): 55			
Liquid Temperature (°C) : 21 ± 2						Depth of Liquid (cm):>15			
Product: GSM MOBILE PHONE									
Test Mode: PCS1900 with GMSK modulation									
Configuration			Antenna Position	Frequency		Frame Power (dBm)	Power Drift (<±0.2 dB)	SAR (1g) (W/kg)	Limit (W/kg)
SIM	Position	Status		channel	MHz				
<1>	Body Front	MS	Fixed	512	1850.2	20.18	--	--	1.6
				661	1880.0	20.22	0.03	0.218	1.6
				810	1909.8	20.25	--	--	1.6
	Body Back	MS	Fixed	512	1850.2	20.18	--	--	1.6
				661	1880.0	20.22	0.01	0.427	1.6
				810	1909.8	20.25	--	--	1.6
		MS Earphone	Fixed	512	1850.2	20.18	--	--	1.6
				661	1880.0	20.22	0.02	0.349	1.6
				810	1909.8	20.25	--	--	1.6

Note: when the 1-g SAR is ≤ 0.8 W/kg, testing for low and high channel is optional. refer to KDB 941225.

Appendix A. SAR System Validation Data

Test Laboratory: AGC Lab

Date: APR.23,2012

System Check Head 900 MHz

DUT: Dipole 900 MHz Type: SID 900

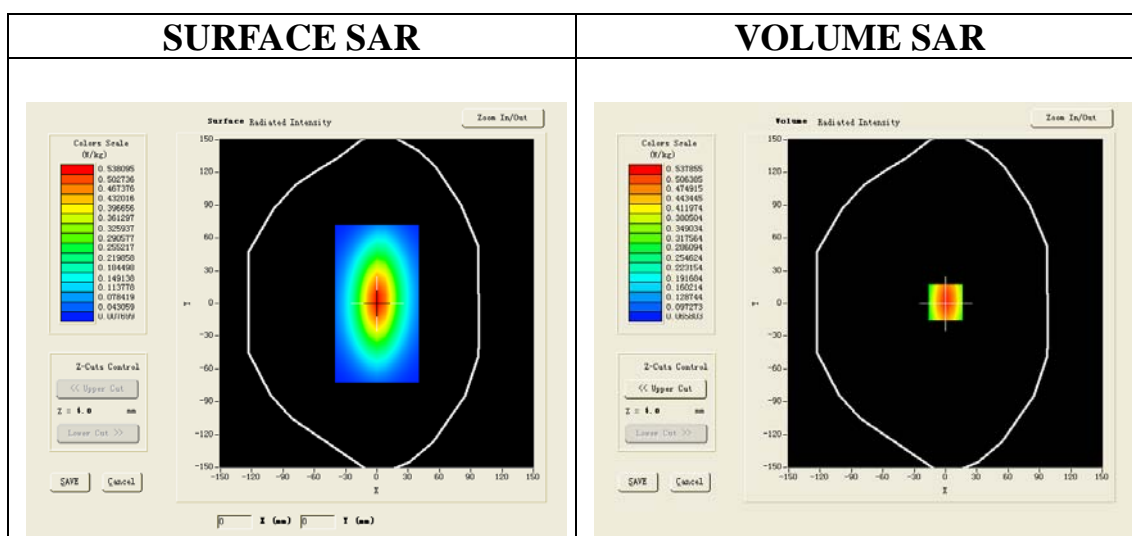
Communication System: CW; Communication System Band: D850(850.0 MHz); Duty Cycle: 1:1; ConvF=6.79
Frequency: 850 MHz; Medium parameters used: $f = 850$ MHz; $\sigma = 0.92$ mho/m; $\epsilon_r = 42.88$; $\rho = 1000$ kg/m³ ;
Phantom section: Flat Section ; Input Power=17dBm
Ambient temperature (°C): 21, Liquid temperature (°C): 21
Satimo Configuration:

Probe:SSE5; Calibrated: 12/09/2011

- Sensor-Surface: 4mm (Mechanical Surface Detection)
- Phantom: SAM1; Type: SAM
- Measurement SW: OpenSAR V4_02_01

Configuration/System Check GSM850 Head/Area Scan: Measurement grid: dx=8mm, dy=8mm

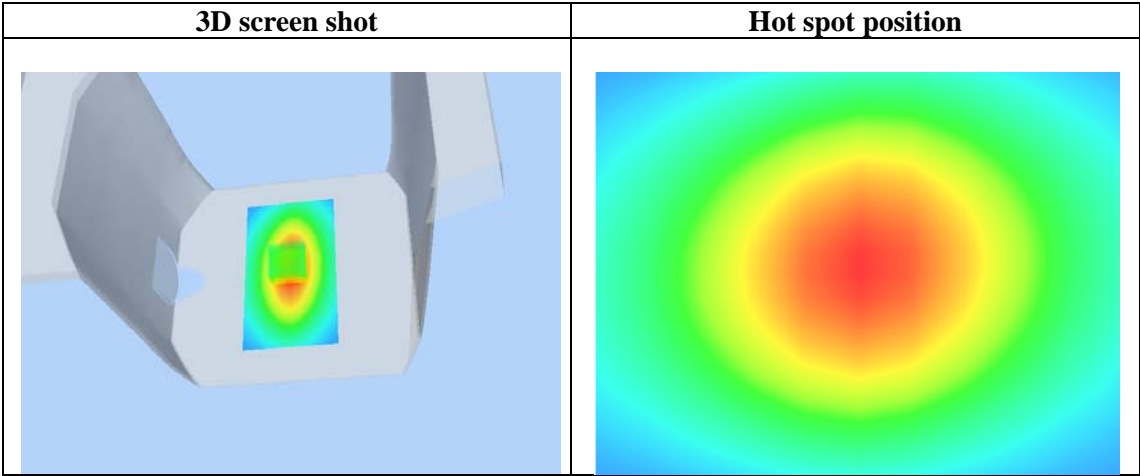
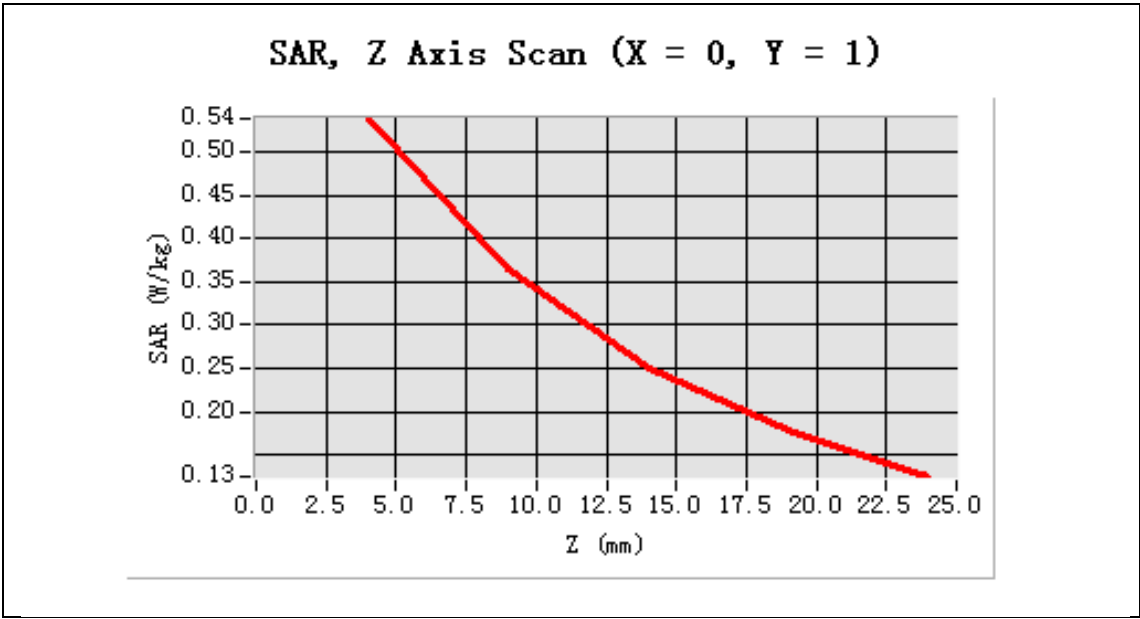
Configuration/System Check GSM850 Head/Zoom Scan : Measurement grid: dx=8mm, dy=8mm, dz=5mm



Maximum location: X=0.00, Y=1.00

SAR 10g (W/Kg)	0.332145
SAR 1g (W/Kg)	0.510228

Z (mm)	0.00	4.00	9.00	14.00	19.00
SAR (W/Kg)	0.0000	0.5379	0.3641	0.2508	0.1778



Test Laboratory: AGC Lab
 System Check Head 1900MHz

Date: APR.23,2012

DUT: Dipole 1900 MHz ; Type: SID 1900

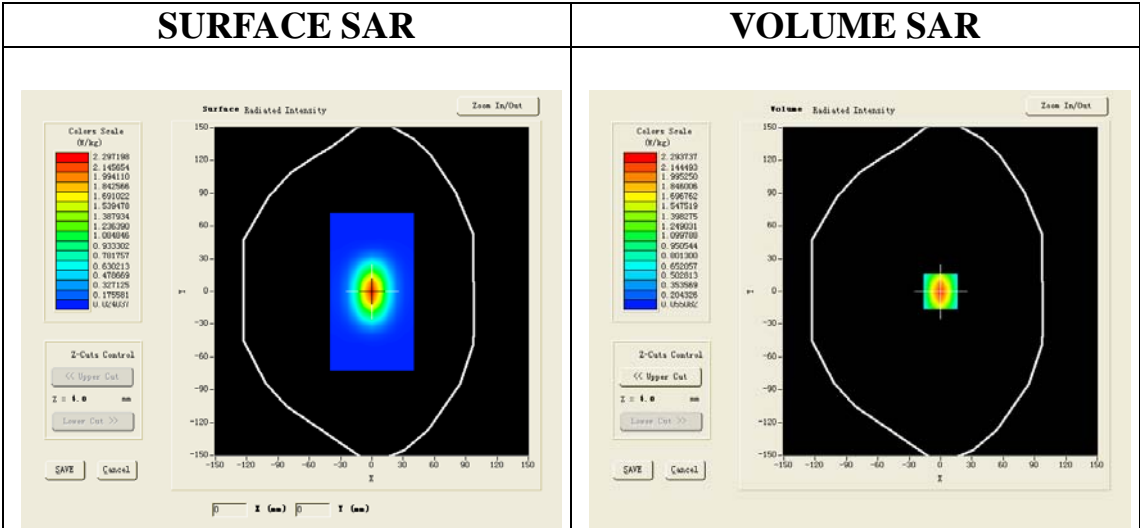
Communication System: CW; Communication System Band: D1900 (1900.0 MHz); Duty Cycle:1:1;ConvF=6.42
 Frequency: 1900 MHz; Medium parameters used: f = 1900 MHz; σ =1.43 mho/m; ϵ_r =40.56; ρ = 1000 kg/m³ ;
 Phantom section: Flat Section ; Input Power=17dBm
 Ambient temperature (°C): 21, Liquid temperature (°C): 21
 Satimo Configuration:

Probe:SSE5; Calibrated: 12/09/2011

- Sensor-Surface: 4mm (Mechanical Surface Detection)
- Phantom: SAM1; Type: SAM
- Measurement SW: OpenSAR V4_02_01

Configuration/System Check PCS1900 Head/Area Scan: Measurement grid: dx=8mm, dy=8mm

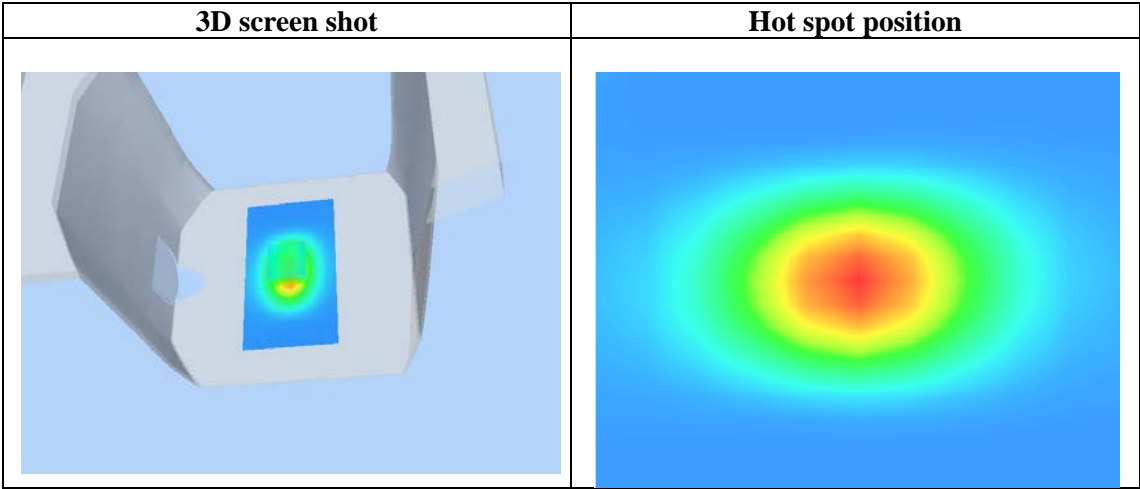
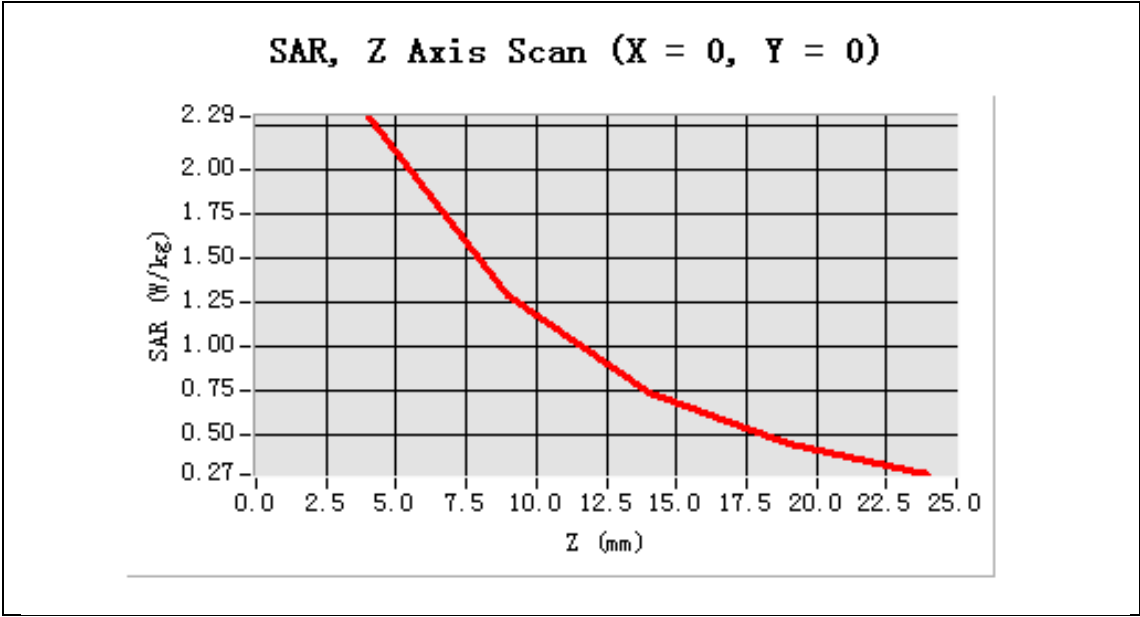
Configuration/System Check PCS1900 Head/Zoom Scan: Measurement grid: dx=8mm, dy=8mm, dz=5mm



Maximum location: X=0.00, Y=0.00

SAR 10g (W/Kg)	1.088679
SAR 1g (W/Kg)	2.0187811

Z (mm)	0.00	4.00	9.00	14.00	19.00
SAR (W/Kg)	0.0000	2.1337	1.2852	0.7329	0.4449



Appendix B. SAR measurement Data

Test Laboratory: AGC Lab
GSM 850 Middle-touch-Left

Date:APR.23,2012

DUT:GSM MOBILE PHONE; Type: VZ102music

Communication System: Generic GSM; Communication System Band: GSM 850; DutyCycle:1: 8; Conv.F=6.79
Frequency: 836.6 MHz; Medium parameters used: $f = 835$ MHz; $\sigma = 0.92$ mho/m; $\epsilon_r = 42.88$;
 $\rho = 1000$ kg/m³ ; Phantom section: Left Section
Ambient temperature (°C): 21, Liquid temperature (°C): 21

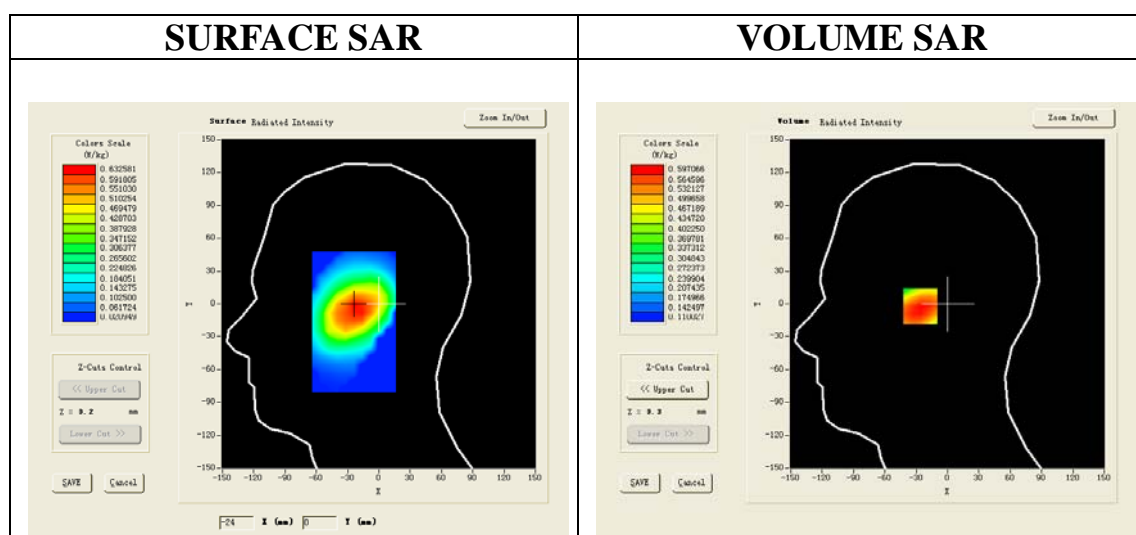
Satimo Configuration:

- Probe:SSE5; Calibrated: 12/09/2011
- Sensor-Surface: 4mm (Mechanical Surface Detection)
- Phantom: SAM1; Type: SAM
- Measurement SW: OpenSAR V4_02_01

Configuration/GSM850 Mid Touch-Left/Area Scan (6x8x1): Measurement grid: dx=20mm, dy=20mm

Configuration/GSM850 Mid Touch-Left/Zoom Scan (5x5x7)/Cube 0: Measurement grid: dx=8mm, dy=8mm, dz=5mm

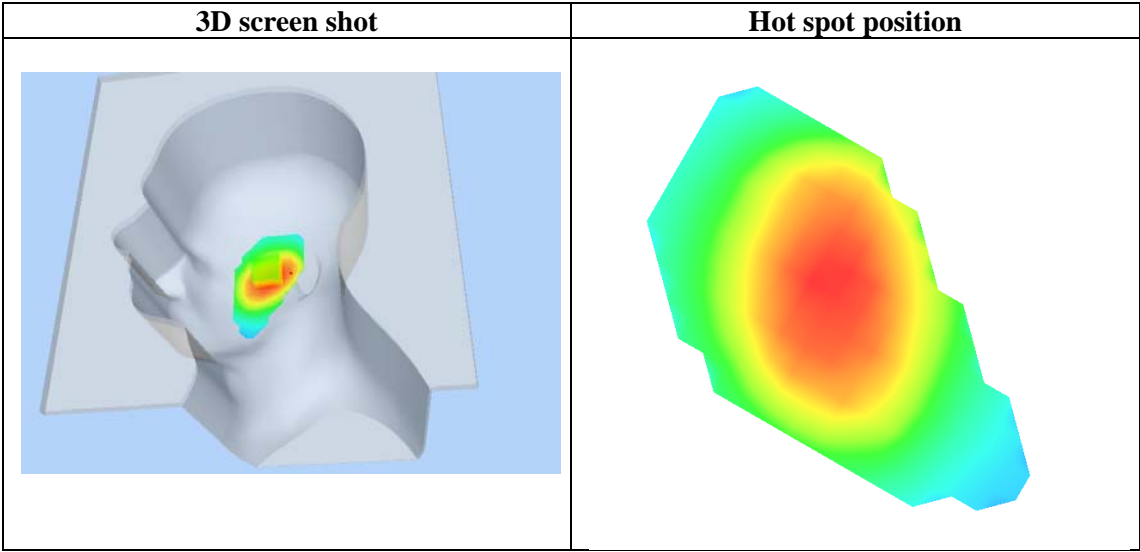
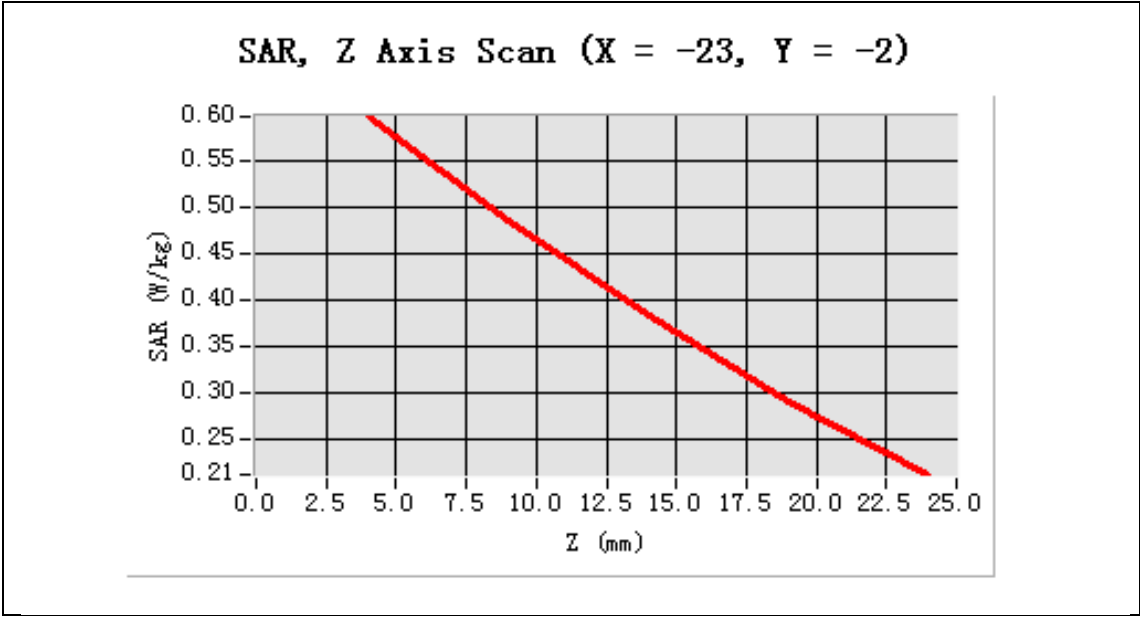
Area Scan	sam_direct_droit2_surf8mm.txt
ZoomScan	5x5x7,dx=8mm dy=8mm dz=5mm,Very fast
Phantom	Left head
Device Position	Cheek
Band	GSM850
Channels	Middle
Signal	TDMA (Crest factor: 8.0)



Maximum location: X=-23.00, Y=-2.00

SAR 10g (W/Kg)	0.433603
SAR 1g (W/Kg)	0.580992

Z (mm)	0.00	4.00	9.00	14.00	19.00
SAR (W/Kg)	0.0000	0.5971	0.4840	0.3816	0.2904



Test Laboratory: AGC Lab
GSM 850 Mid Tilt-left
DUT:GSM MOBILE PHONE; Type: VZ102music

Date:APR.23,2012

Communication System: Generic GSM; Communication System Band: GSM 850; DutyCycle:1: 8; Conv.F=6.79
Frequency: 836.6 MHz; Medium parameters used: $f = 835$ MHz; $\sigma = 0.92$ mho/m; $\epsilon_r = 42.88$;
 $\rho = 1000$ kg/m³ ; Phantom section:Right Section
Ambient temperature (°C): 21, Liquid temperature (°C): 21

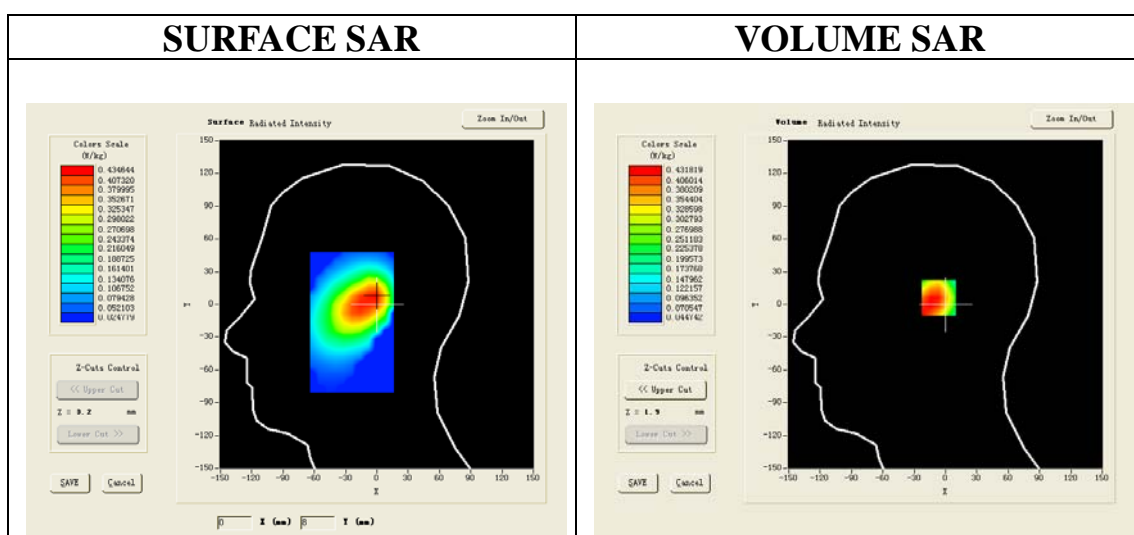
Satimo Configuration:

- Probe:SSE5; Calibrated: 12/09/2011
- Sensor-Surface: 4mm (Mechanical Surface Detection)
- Phantom: SAM1; Type: SAM
- Measurement SW: OpenSAR V4_02_01

Configuration/ GSM 850 Mid Tilt-left /Area Scan: Measurement grid: dx=20mm, dy=20mm

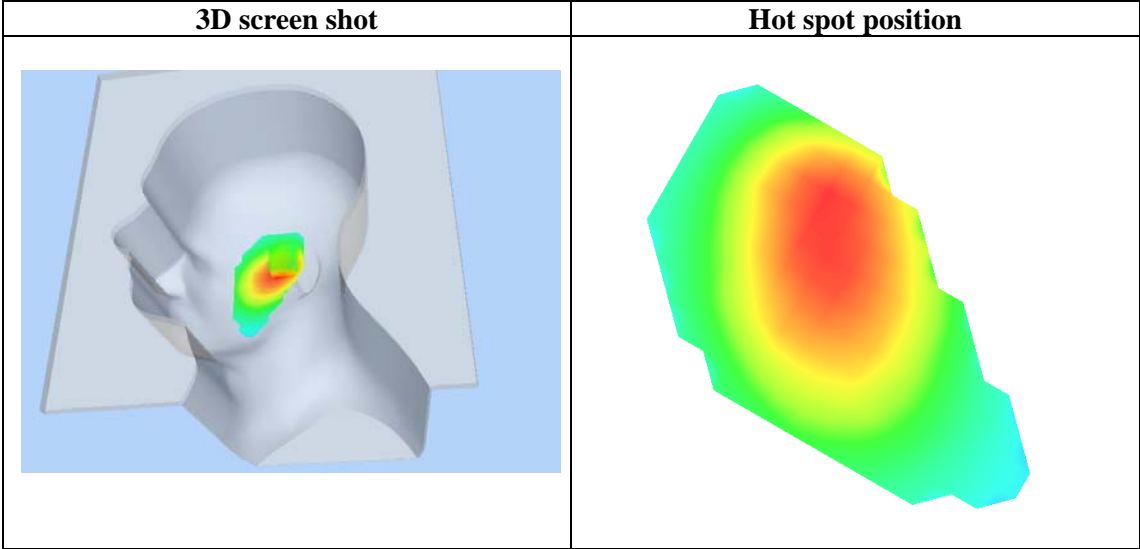
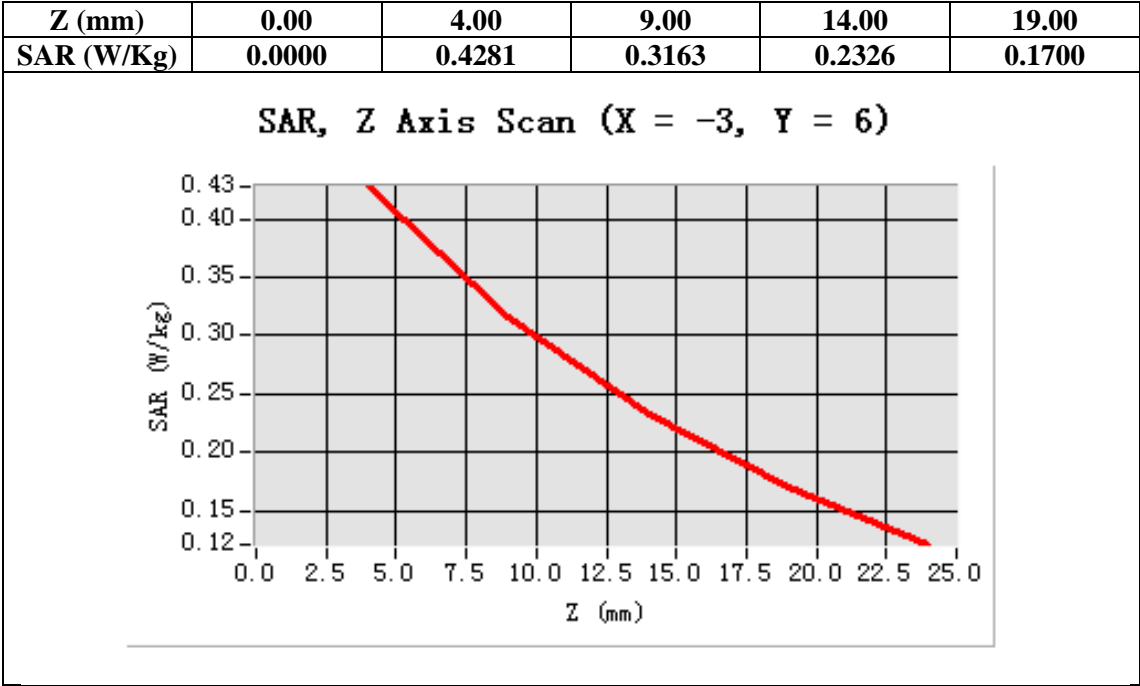
Configuration/ GSM 850 Mid Tilt-left /Zoom Scan: Measurement grid: dx=8mm, dy=8mm, dz=5mm;

Area Scan	sam_direct_droit2_surf8mm.txt
Zoom Scan	5x5x7,dx=8mm dy=8mm dz=5mm,Very fast
Phantom	Left head
Device Position	Tilt
Band	GSM850
Channels	Middle
Signal	TDMA (Crest factor: 8.0)



Maximum location: X=-3.00, Y=6.00

SAR 10g (W/Kg)	0.290556
SAR 1g (W/Kg)	0.419916



Test Laboratory: AGC Lab
GSM 850 Mid- touch-Right
DUT:GSM MOBILE PHONE; Type: VZ102music

Date:APR.23,2012

Communication System: Generic GSM; Communication System Band: GSM 850; DutyCycle:1: 8; Conv.F=6.79
Frequency: 836.6 MHz; Medium parameters used: $f = 835$ MHz; $\sigma = 0.92$ mho/m; $\epsilon_r = 42.88$;
 $\rho = 1000$ kg/m³ ; Phantom section: Left Section
Ambient temperature (°C): 21, Liquid temperature (°C): 21

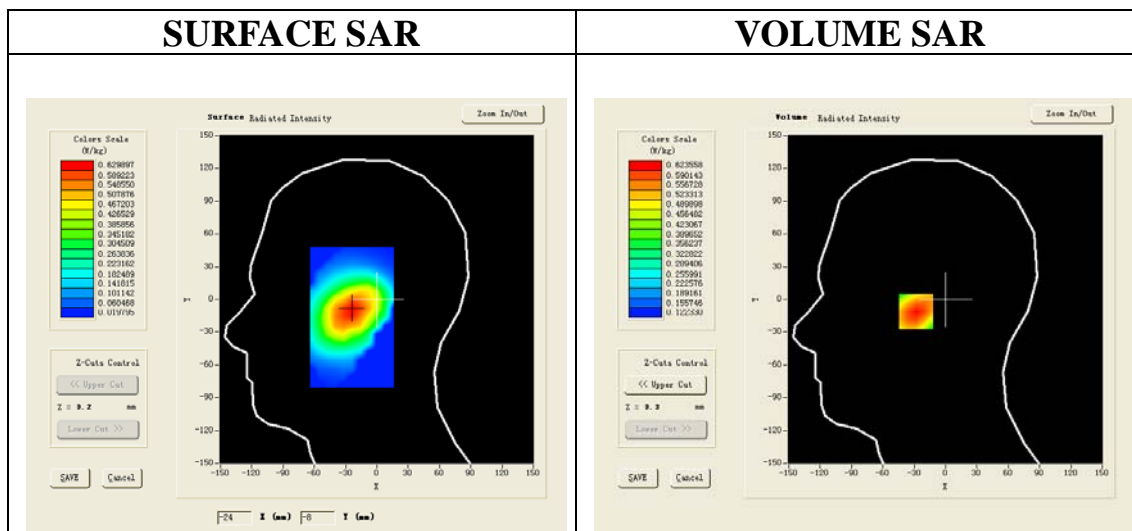
Satimo Configuration:

- Probe:SSE5; Calibrated: 12/09/2011
- Sensor-Surface: 4mm (Mechanical Surface Detection)
- Phantom: SAM1; Type: SAM
- Measurement SW: OpenSAR V4_02_01

Configuration/ GSM 850 Middle touch-Right t /Area Scan: Measurement grid: dx=20mm, dy=20mm

Configuration/ GSM 850 Middle touch-Right /Zoom Scan: Measurement grid: dx=8mm, dy=8mm, dz=5mm;

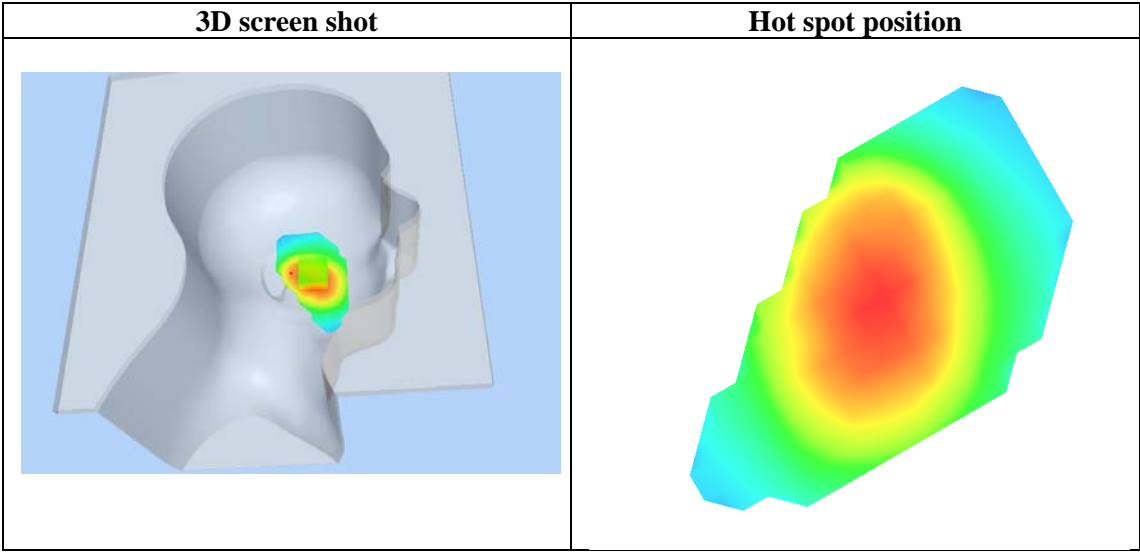
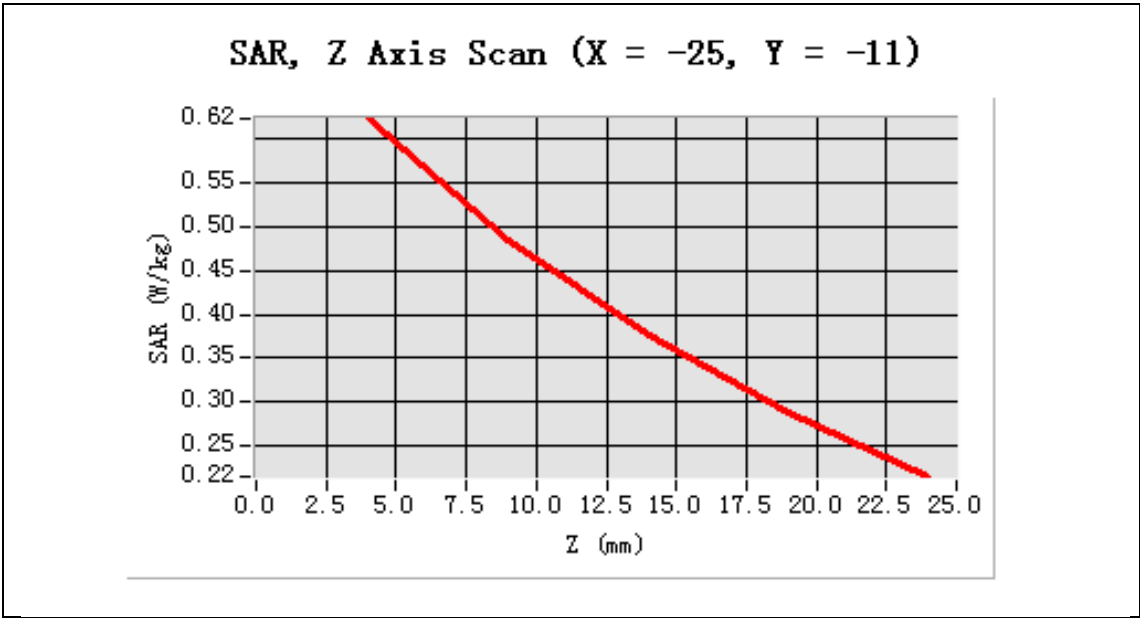
Area Scan	sam_direct_droit2_surf8mm.txt
ZoomScan	5x5x7,dx=8mm dy=8mm dz=5mm,Very fast
Phantom	Right head
Device Position	Cheek
Band	GSM850
Channels	Middle
Signal	TDMA (Crest factor: 8.0)



Maximum location: X=-25.00, Y=-11.00

SAR 10g (W/Kg)	0.434307
SAR 1g (W/Kg)	0.599127

Z (mm)	0.00	4.00	9.00	14.00	19.00
SAR (W/Kg)	0.0000	0.6236	0.4853	0.3752	0.2876



Test Laboratory: AGC Lab
GSM 850 Mid-tilt-Right
DUT:GSM MOBILE PHONE; Type:VZ102music

Date:APR.23,2012

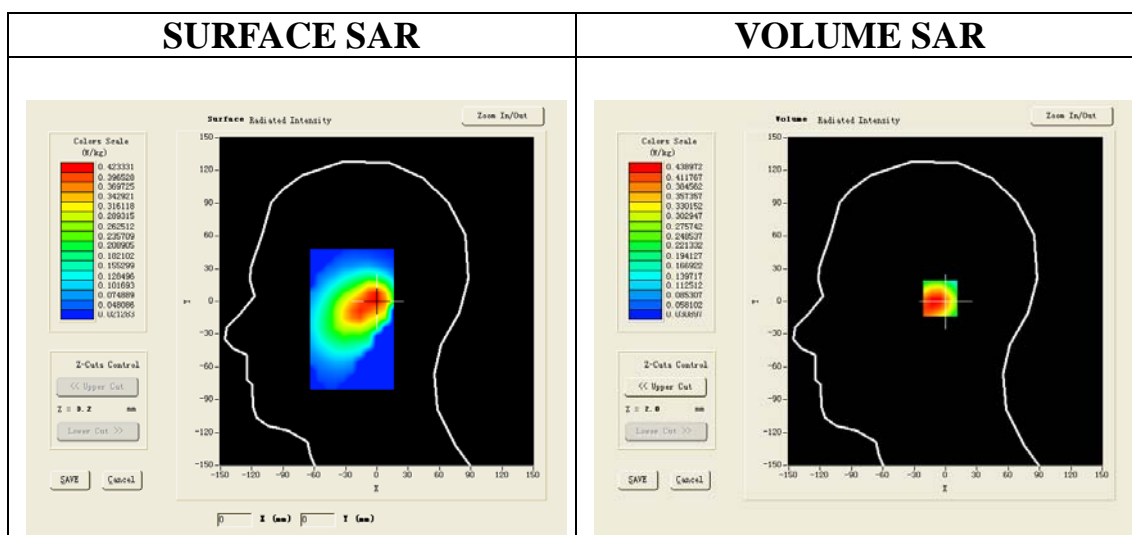
Communication System: Generic GSM; Communication System Band: GSM 850; DutyCycle:1: 8; Conv.F=6.79
Frequency: 836.6 MHz; Medium parameters used: $f = 835$ MHz; $\sigma = 0.92$ mho/m; $\epsilon_r = 42.88$;
 $\rho = 1000$ kg/m³ ; Phantom section: Left Section
Ambient temperature (°C):21, Liquid temperature (°C):21

- Satimo Configuration:
Probe:SSE5; Calibrated: 12/09/2011
- Sensor-Surface: 4mm (Mechanical Surface Detection)
 - Phantom: SAM1; Type: SAM
 - Measurement SW: OpenSAR V4_02_01

Configuration/ GSM 850 Mid-tilt-Right /Area Scan (6x8x1): Measurement grid: dx=20mm, dy=20mm

Configuration/ GSM 850 Mid-tilt-Right /Zoom Scan (5x5x7)/Cube 0: Measurement grid: dx=8mm, dy=8mm, dz=5mm;

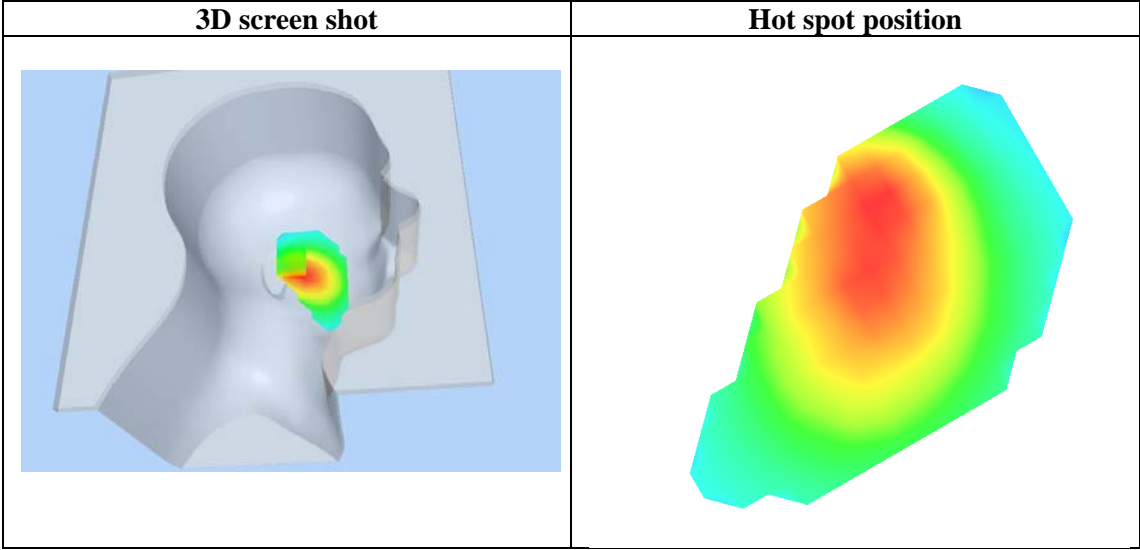
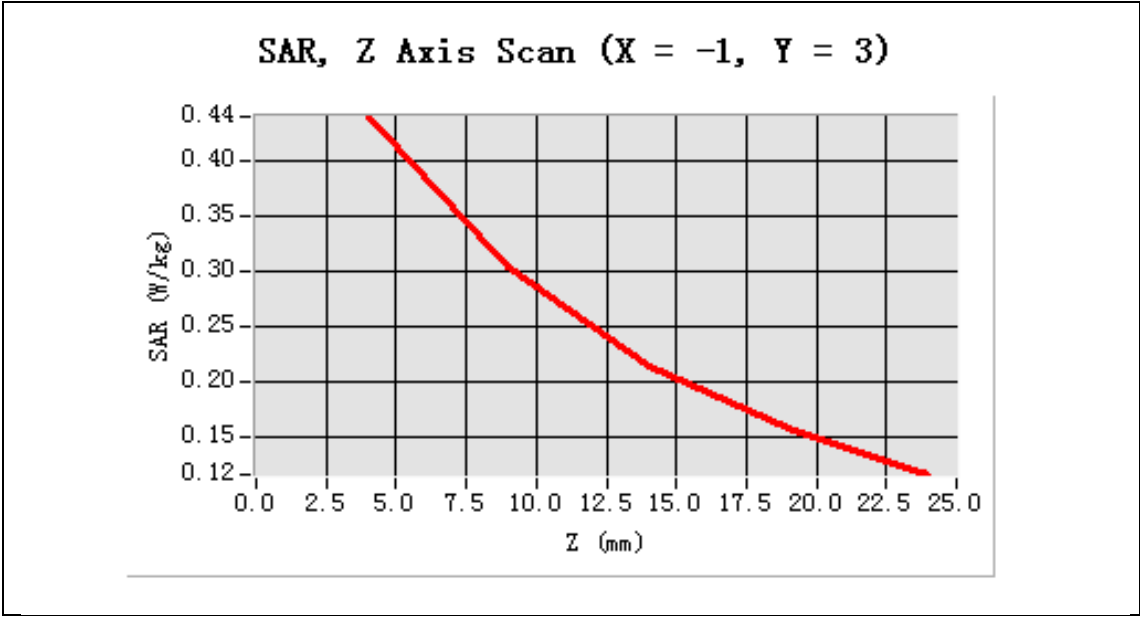
Area Scan	surf_sam_plan.txt
ZoomScan	5x5x7,dx=8mm dy=8mm dz=5mm,Very fast
Phantom	Right Head
Device Position	Title
Band	GSM850
Channels	Middle
Signal	TDMA (Crest factor: 8.0)



Maximum location: X=-1.00, Y=3.00

SAR 10g (W/Kg)	0.283936
SAR 1g (W/Kg)	0.429319

Z (mm)	0.00	4.00	9.00	14.00	19.00
SAR (W/Kg)	0.0000	0.4390	0.3028	0.2141	0.1572



Test Laboratory: AGC Lab

Date:APR.23,2012

GSM 850 Mid-Body-Worn Front

DUT:GSM MOBILE PHONE; Type:VZ102music

Communication System: Generic GSM; Communication System Band: GSM 850; DutyCycle:1: 8; Conv.F=6.79

Frequency: 836.6 MHz; Medium parameters used: $f = 835$ MHz; $\sigma = 0.99$ mho/m; $\epsilon_r = 55.44$;

$\rho = 1000$ kg/m³ ; Phantom section: Left Section

Ambient temperature (°C):21, Liquid temperature (°C):21

Satimo Configuration:

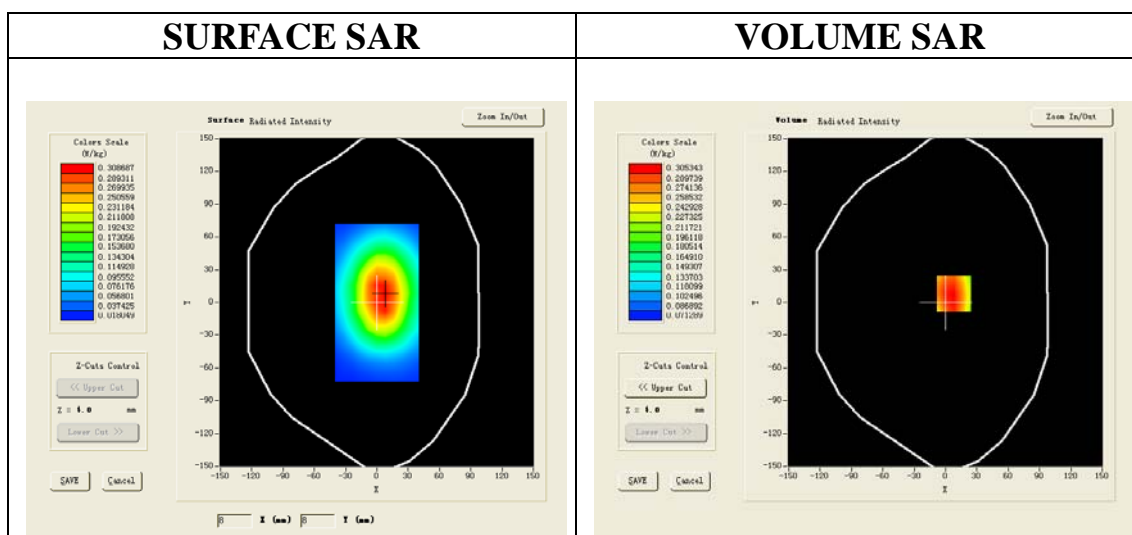
Probe:SSE5; Calibrated: 12/09/2011

- Sensor-Surface: 4mm (Mechanical Surface Detection)
- Phantom: SAM1; Type: SAM
- Measurement SW: OpenSAR V4_02_01

Configuration/ GSM 850 Mid-Body-Worn Front /Area Scan (6x8x1): Measurement grid: dx=20mm, dy=20mm

Configuration/ GSM 850 Mid-Body-Worn Front /Zoom Scan (5x5x7)/Cube 0: Measurement grid: dx=8mm, dy=8mm, dz=5mm;

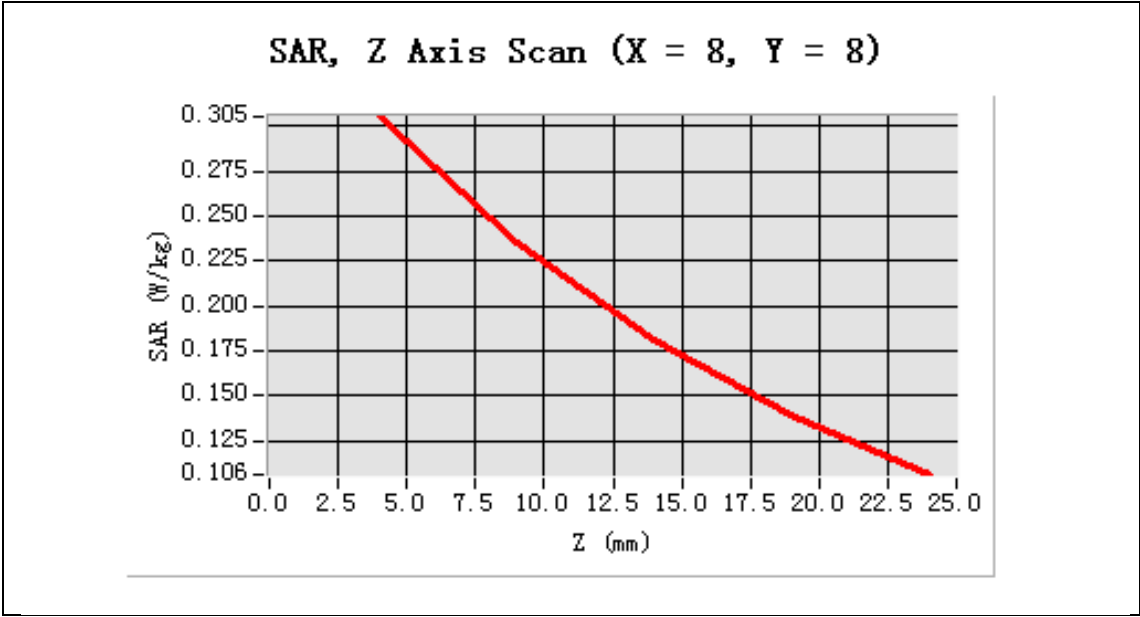
Area Scan	surf_sam_plan.txt
ZoomScan	5x5x7,dx=8mm dy=8mm dz=5mm,Very fast
Phantom	Validation plane
Device Position	Body Front
Band	GSM850
Channels	Middle
Signal	TDMA (Crest factor: 8.0)

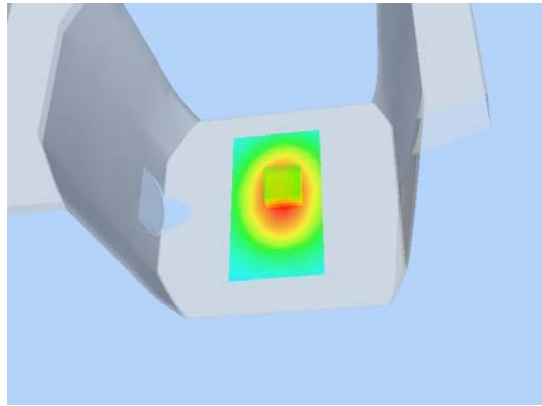
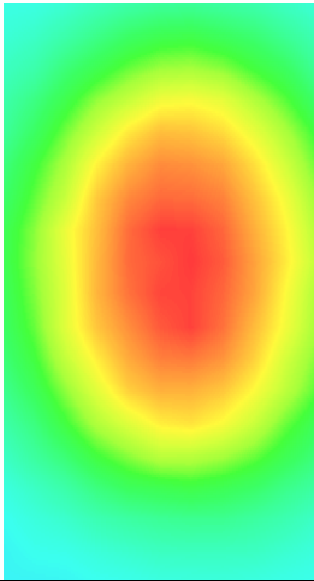


Maximum location: X=8.00, Y=8.00

SAR 10g (W/Kg)	0.235498
SAR 1g (W/Kg)	0.320161

Z (mm)	0.00	4.00	9.00	14.00	19.00
SAR (W/Kg)	0.0000	0.3053	0.2348	0.1808	0.1395



3D screen shot	Hot spot position
	

Test Laboratory: AGC Lab
GSM 850 Middle-body- Worn-Back (MS)
DUT:GSM MOBILE PHONE; Type:VZ102music

Date:APR.23,2012

Communication System: Generic GSM; Communication System Band: GSM 850; DutyCycle:1: 8; Conv.F=6.79
Frequency: 836.6 MHz; Medium parameters used: $f = 835$ MHz; $\sigma = 0.99$ mho/m; $\epsilon_r = 55.44$;
 $\rho = 1000$ kg/m³ ; Phantom section: Left Section
Ambient temperature (°C):21, Liquid temperature (°C):21

Satimo Configuration:

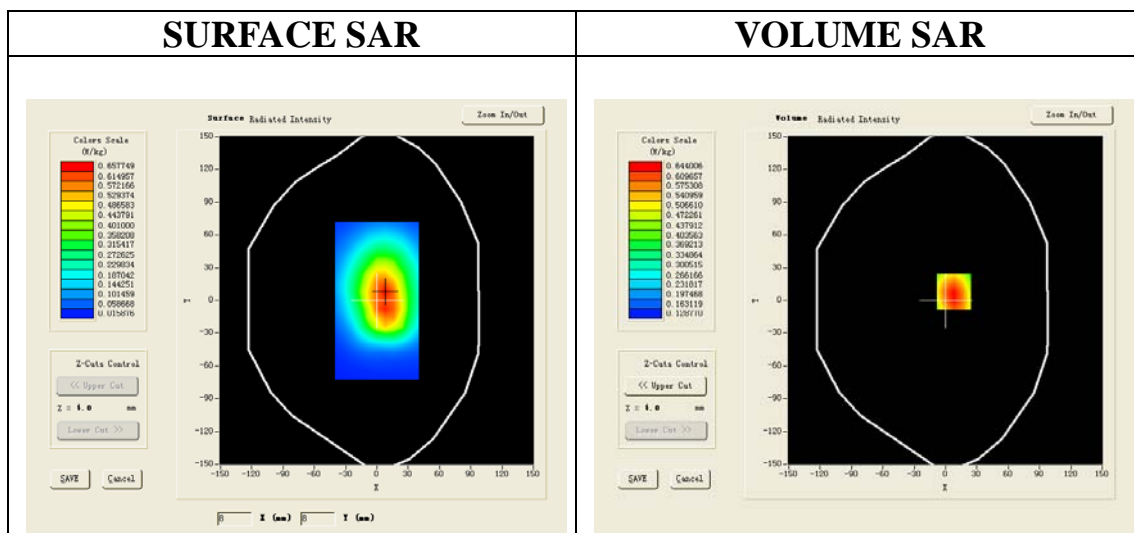
Probe:SSE5; Calibrated: 12/09/2011

- Sensor-Surface: 4mm (Mechanical Surface Detection)
- Phantom: SAM1; Type: SAM
- Measurement SW: OpenSAR V4_02_01

Configuration/ GSM 850 Middle -body- Worn- Back (MS) /Area Scan: Measurement grid: dx=20mm, dy=20mm

Configuration/GSM850 Middle-body-Worn-Back(MS) /Zoom Scan: Measurement grid: dx=8mm,dy=8mm, dz=5mm;

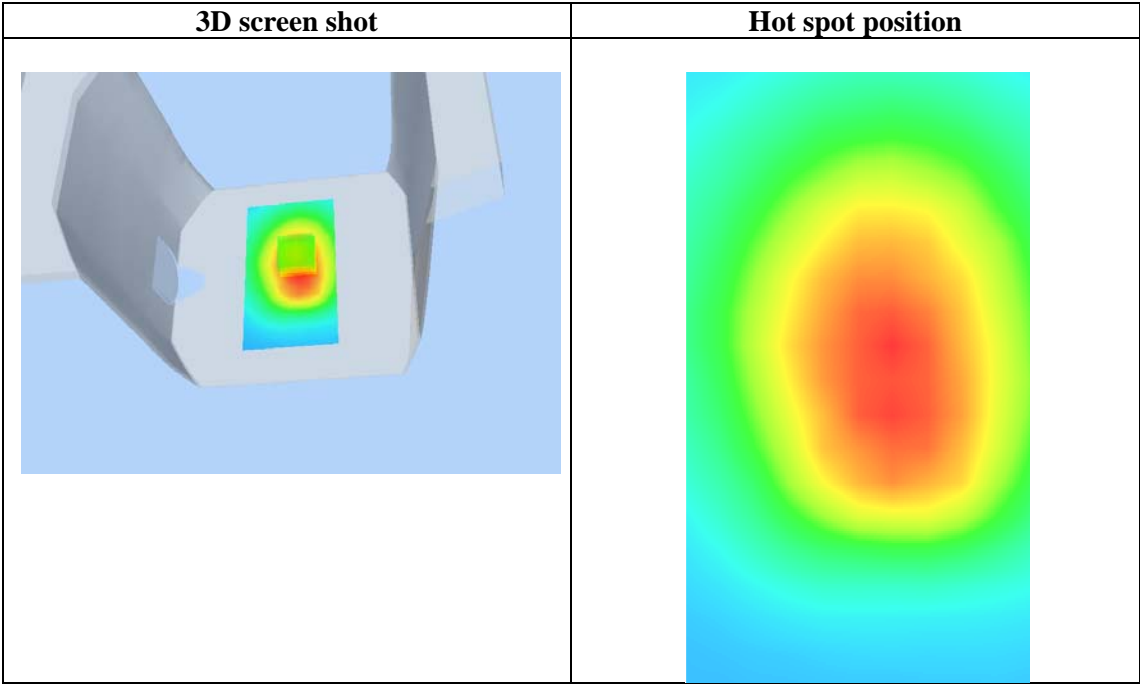
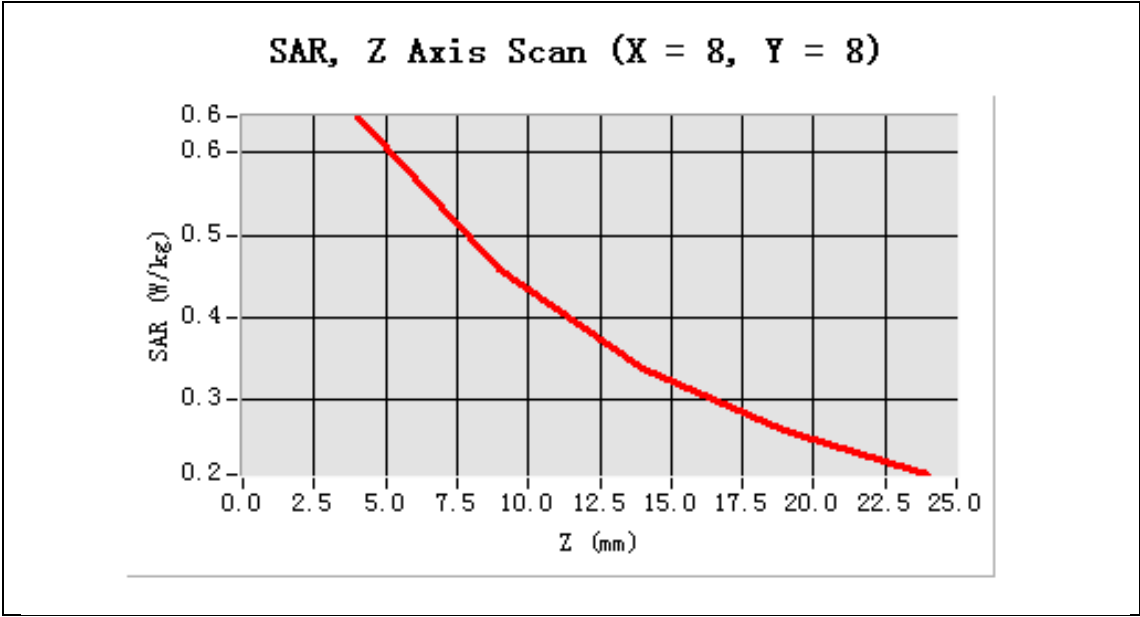
Area Scan	sam_direct_droit2_surf8mm.txt
ZoomScan	5x5x7,dx=8mm dy=8mm dz=5mm,Very fast
Phantom	Validation plane
Device Position	Body Back
Band	GSM850
Channels	Middle
Signal	TDMA (Crest factor: 8.0)



Maximum location: X=8.00, Y=8.00

SAR 10g (W/Kg)	0.468099
SAR 1g (W/Kg)	0.669603

Z (mm)	0.00	4.00	9.00	14.00	19.00
SAR (W/Kg)	0.0000	0.6440	0.4588	0.3392	0.2636



Test Laboratory: AGC Lab
GSM 850 Middle-body- Worn-Back (MS (With earphone)
DUT:GSM MOBILE PHONE; Type:VZ102music

Date:APR.12,2012

Communication System: Generic GSM; Communication System Band: GSM 850; DutyCycle:1: 8; Conv.F=6.79
Frequency: 836.6 MHz; Medium parameters used: $f = 835$ MHz; $\sigma = 0.99$ mho/m; $\epsilon_r = 55.44$;
Phantom section: Left Section
Ambient temperature ($^{\circ}$ C):21, Liquid temperature ($^{\circ}$ C):21

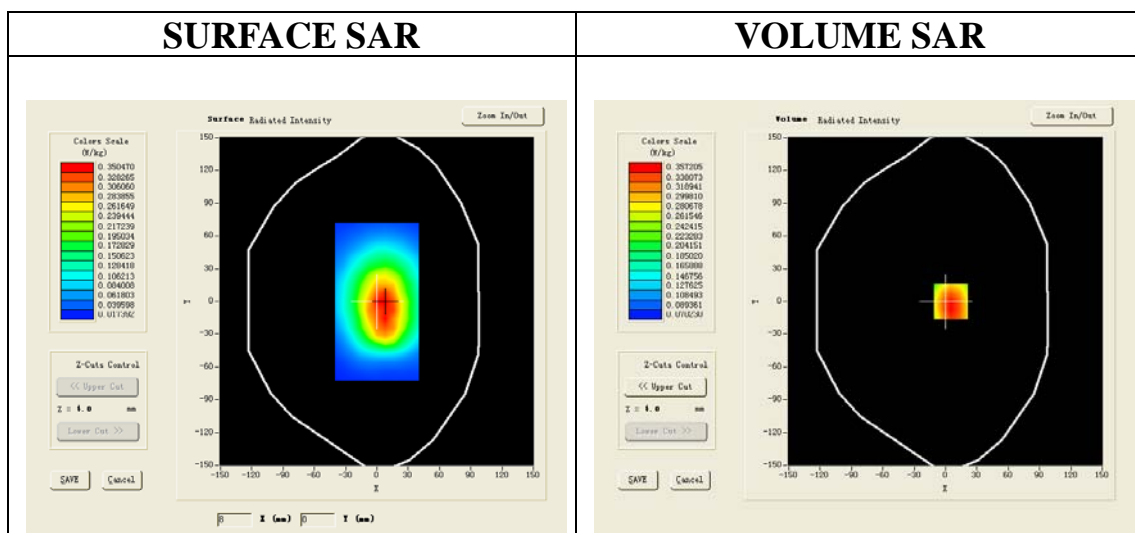
Satimo Configuration:

- Probe:SSE5; Calibrated: 12/09/2011
- Sensor-Surface: 4mm (Mechanical Surface Detection)
- Phantom: SAM1; Type: SAM
- Measurement SW: OpenSAR V4_02_01

Configuration/ GSM 850 Middle -body- Worn-Back (MS (With earphone) /Area Scan: Measurement grid:
dx=20mm, dy=20mm

Configuration/ GSM 850 Middle -body- Worn-Back (MS (With earphone) /Zoom Scan: Measurement grid:
dx=8mm, dy=8mm,
dz=5mm;

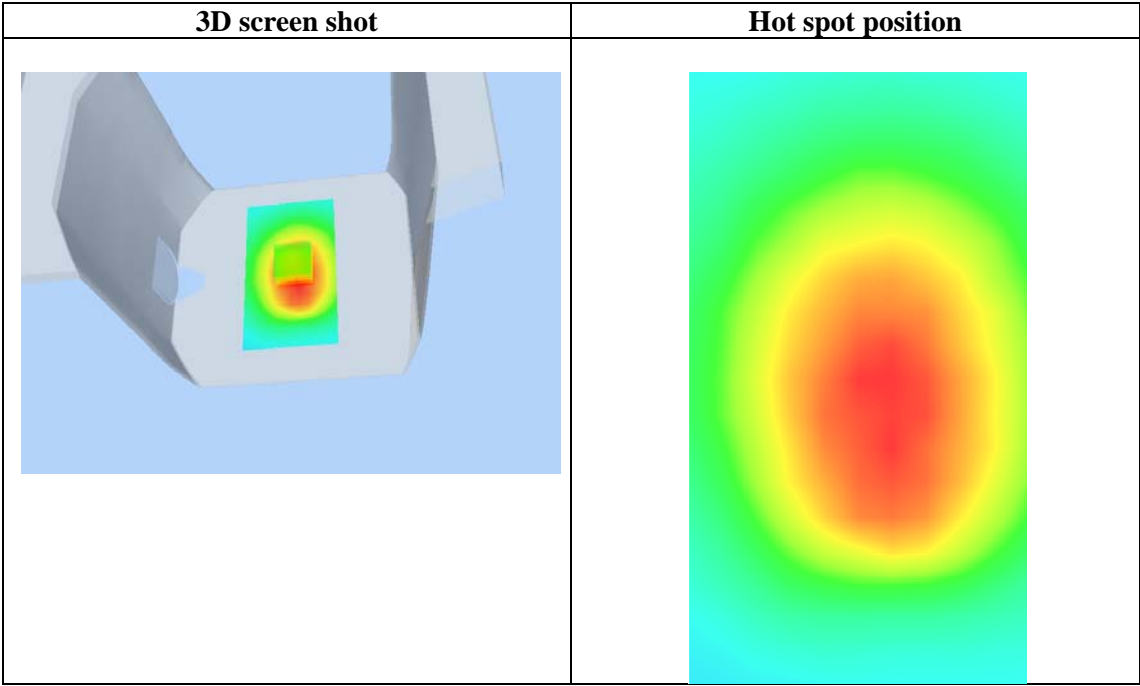
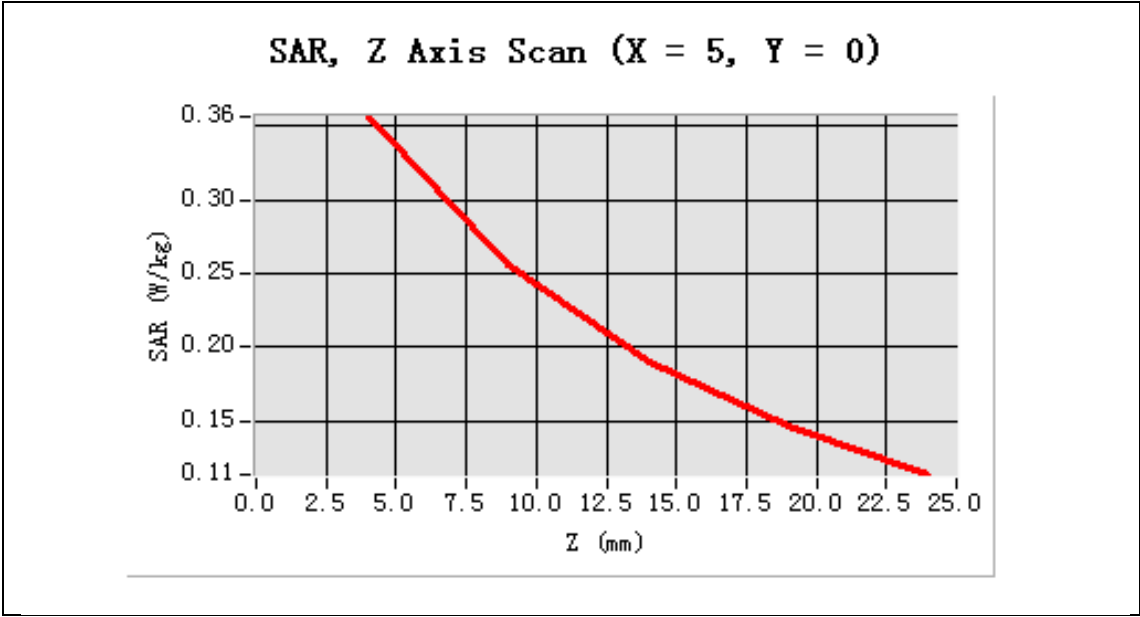
Area Scan	sam_direct_droit2_surf8mm.txt
ZoomScan	5x5x7,dx=8mm dy=8mm dz=5mm,Very fast
Phantom	Validation plane
Device Position	Body Back
Band	GSM850
Channels	Middle
Signal	TDMA (Crest factor: 8.0)



Maximum location: X=5.00, Y=0.00

SAR 10g (W/Kg)	0.262324
SAR 1g (W/Kg)	0.371885

Z (mm)	0.00	4.00	9.00	14.00	19.00
SAR (W/Kg)	0.0000	0.3564	0.2563	0.1897	0.1457



Test Laboratory: AGC Lab

Date:APR.23,2012

PCS 1900 Middle-touch-Left

DUT:GSM MOBILE PHONE; Type:VZ102music

Communication System: Generic GSM; Communication System Band: PCS 1900; Duty Cycle: 1:8; ConvF=6.42

Frequency: 1880 MHz; Medium parameters used: $f = 1900$ MHz; $\sigma = 1.43$ mho/m; $\epsilon_r = 40.56$; $\rho = 1000$ kg/m³ ;

Phantom section: Right Section

Ambient temperature (°C):21, Liquid temperature (°C):21

Satimo Configuration:

Probe:SSE5; Calibrated: 12/09/2011

• Sensor-Surface: 4mm (Mechanical Surface Detection)

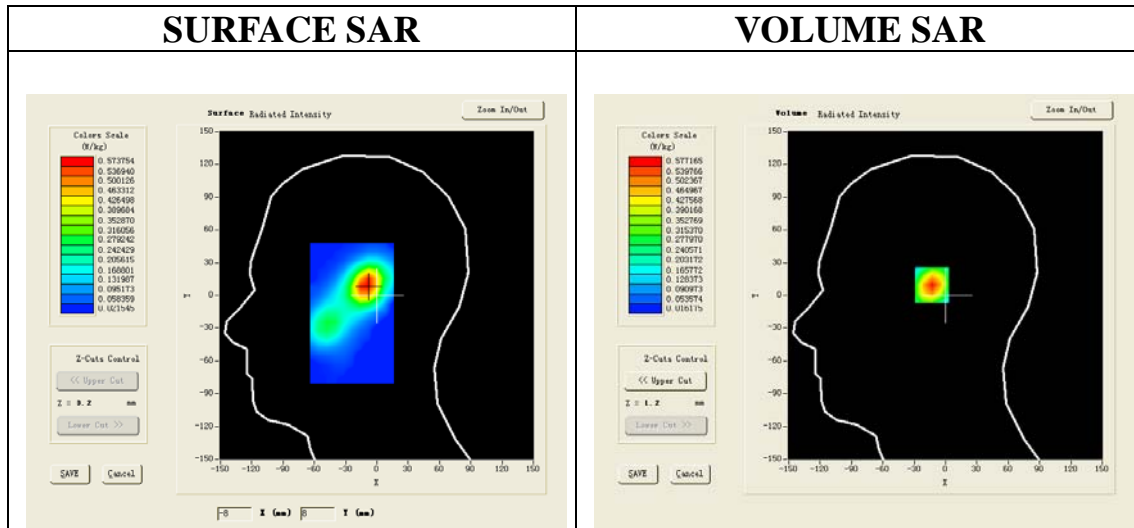
• Phantom: SAM1; Type: SAM

• Measurement SW: OpenSAR V4_02_01

Configuration/ PCS 1900 Middle-touch-Left <SIM 1>/Area Scan: Measurement grid: dx=20mm, dy=20mm

Configuration/ PCS 1900 Middle-touch-Left <SIM 1>/Zoom Scan: Measurement grid: dx=8mm, dy=8mm, dz=5mm;

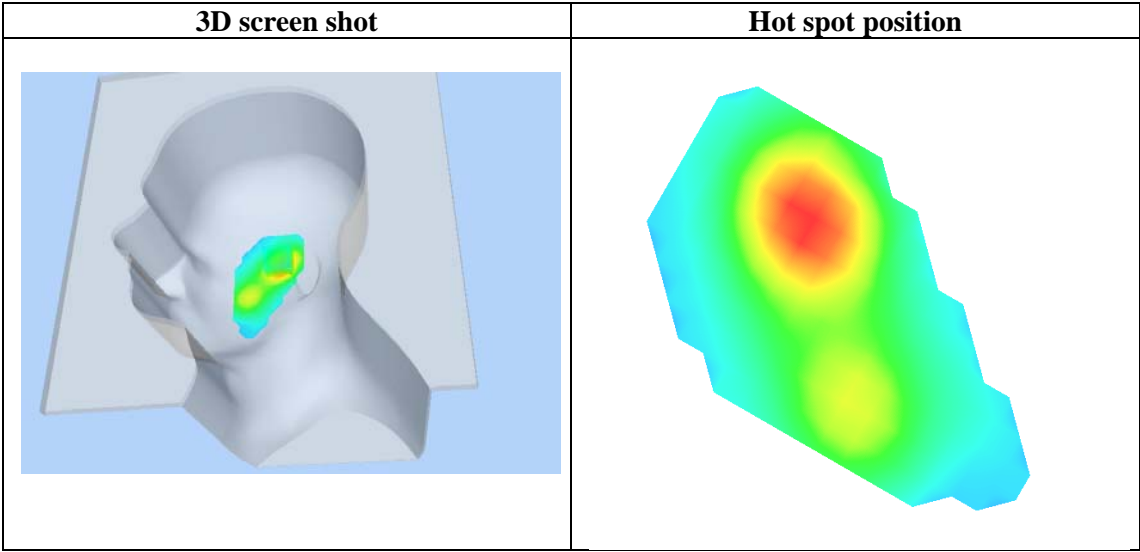
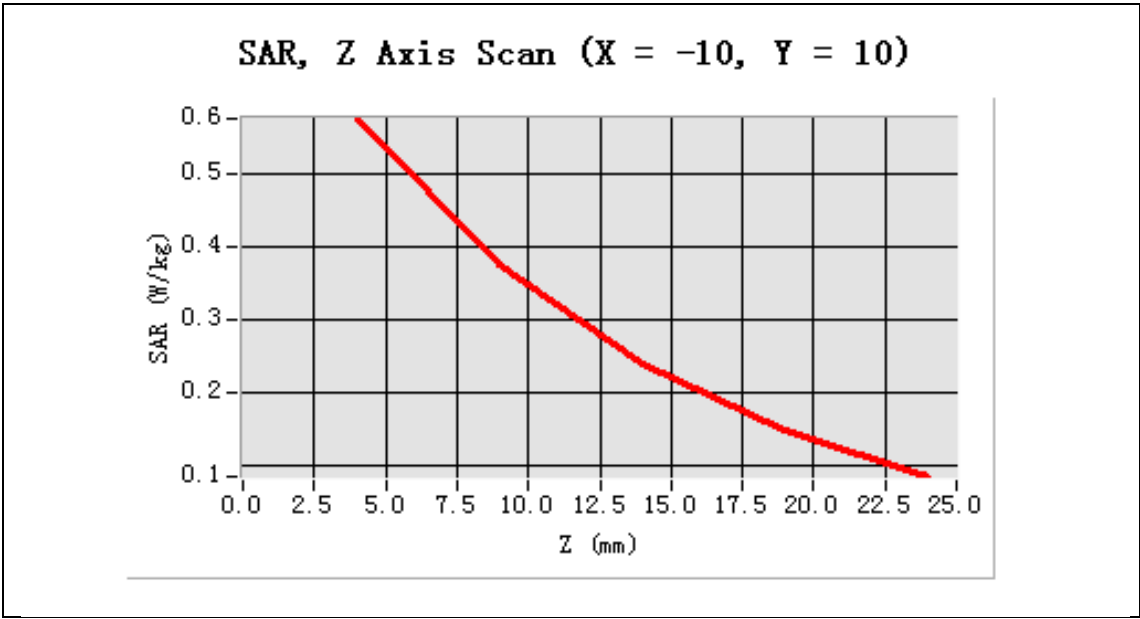
Area Scan	sam_direct_droit2_surf8mm.txt
ZoomScan	5x5x7,dx=8mm dy=8mm dz=5mm,Very fast
Phantom	Left head
Device Position	Cheek
Band	GSM1900
Channels	Middle
Signal	TDMA (Crest factor: 8.0)



Maximum location: X=-10.00, Y=10.00

SAR 10g (W/Kg)	0.302758
SAR 1g (W/Kg)	0.534181

Z (mm)	0.00	4.00	9.00	14.00	19.00
SAR (W/Kg)	0.0000	0.5772	0.3775	0.2412	0.1495



Test Laboratory: AGC Lab
PCS 1900 Mid-Tilt Left
DUT:GSM MOBILE PHONE; Type:VZ102music

Date:APR.23,2012

Communication System: Generic GSM; Communication System Band: PCS 1900; Duty Cycle: 1:8; ConvF=6.42
Frequency: 1880 MHz; Medium parameters used: $f = 1900$ MHz; $\sigma = 1.43$ mho/m; $\epsilon_r=40.56$; $\rho = 1000$ kg/m³ ;
Phantom section: Right Section
Ambient temperature (°C):21, Liquid temperature (°C):21

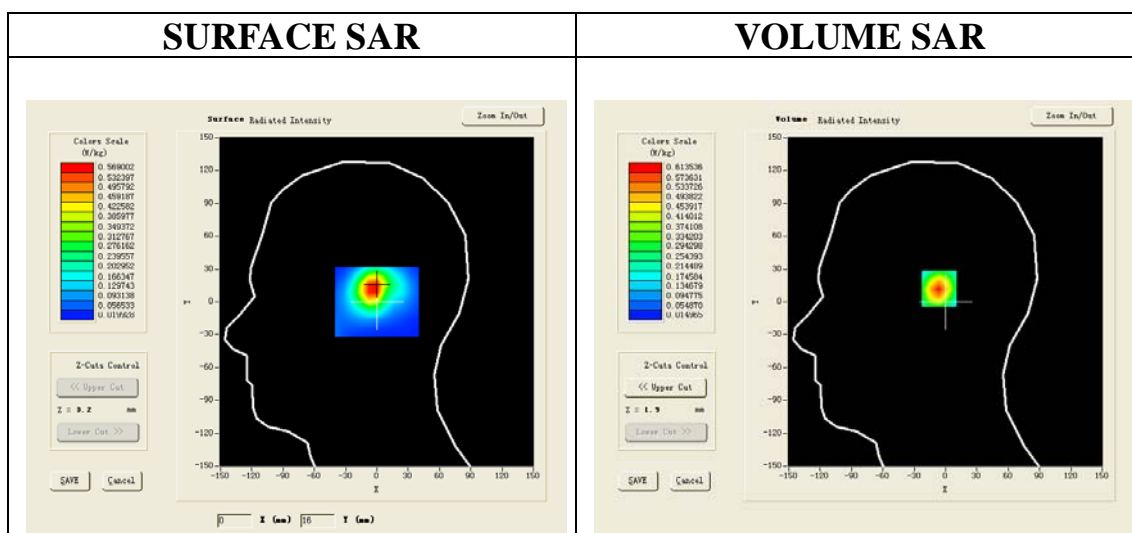
Satimo Configuration:

- Probe:SSE5; Calibrated: 12/09/2011
- Sensor-Surface: 4mm (Mechanical Surface Detection)
- Phantom: SAM1; Type: SAM
- Measurement SW: OpenSAR V4_02_01

Configuration/PCS1900 Mid Tilt-Right/Area Scan: Measurement grid: dx=20mm, dy=20mm

Configuration/PCS1900 Mid Tilt-Right/Zoom Scan: Measurement grid: dx=8mm, dy=8mm, dz=5mm;

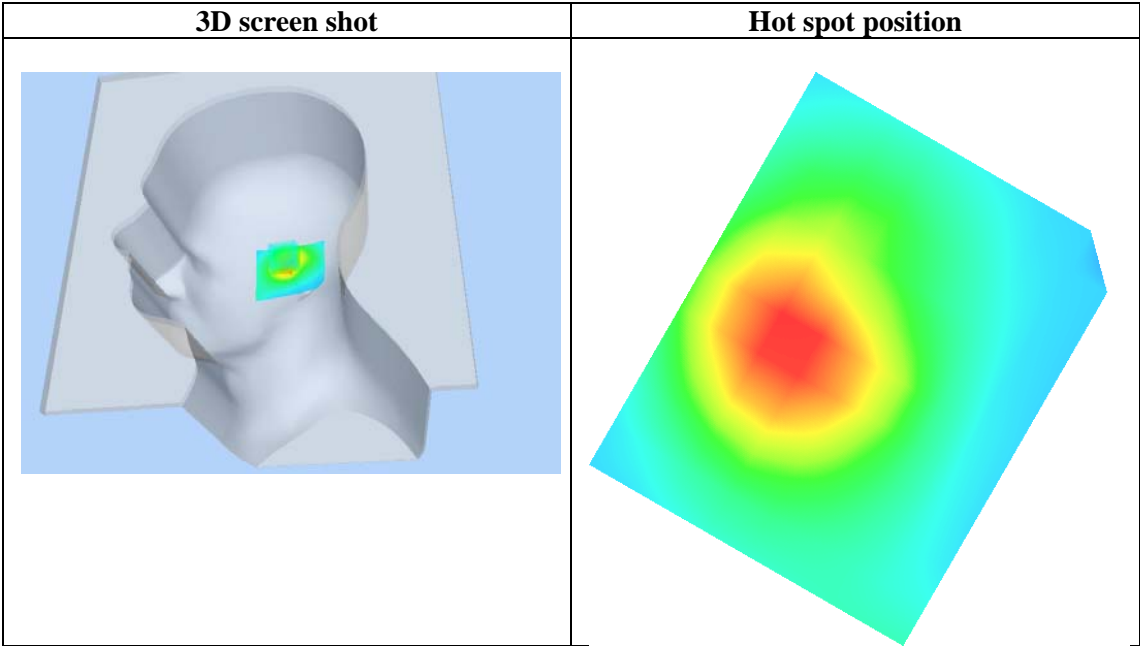
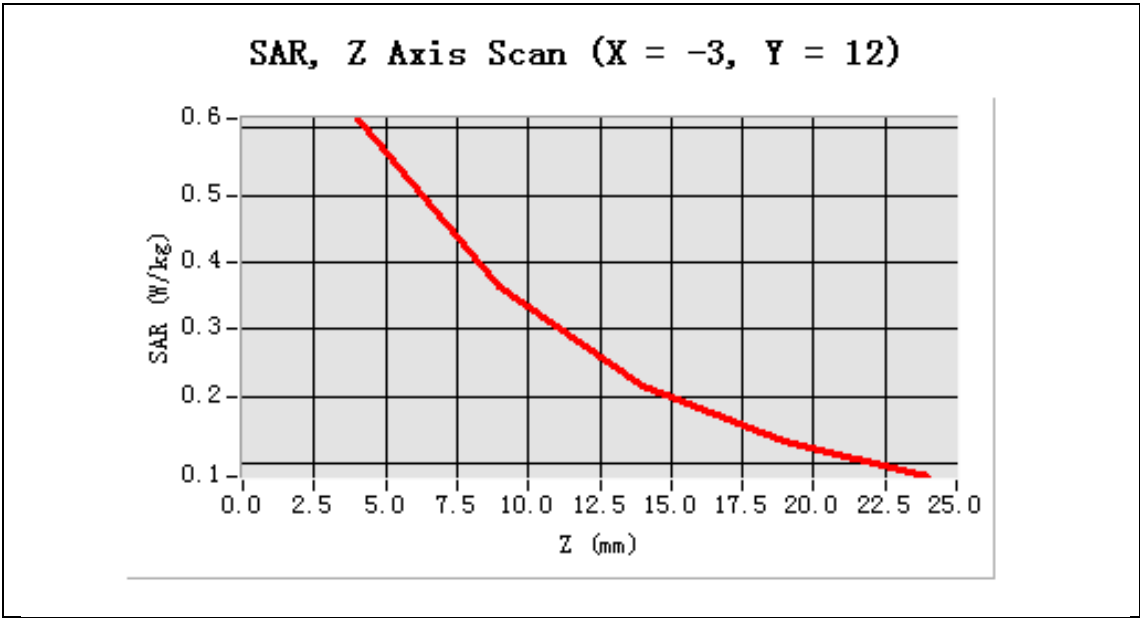
Area Scan	sam_direct_droit2_surf8mm.txt
ZoomScan	5x5x7,dx=8mm dy=8mm dz=5mm,Very fast
Phantom	Left head
Device Position	Tilt
Band	GSM1900
Channels	Middle
Signal	TDMA (Crest factor: 8.0)



Maximum location: X=-3.00, Y=12.00

SAR 10g (W/Kg)	0.302277
SAR 1g (W/Kg)	0.565945

Z (mm)	0.00	4.00	9.00	14.00	19.00
SAR (W/Kg)	0.0000	0.6135	0.3633	0.2168	0.1337



Test Laboratory: AGC Lab
PCS 1900 Middle touch-Right
DUT:GSM MOBILE PHONE; Type:VZ102music

Date:APR.23,2012

Communication System: Generic GSM; Communication System Band: PCS 1900; Duty Cycle: 1:8; ConvF=6.42
Frequency: 1880 MHz; Medium parameters used: $f = 1900$ MHz; $\sigma = 1.43$ mho/m; $\epsilon_r = 40.56$; $\rho = 1000$ kg/m³ ;
Phantom section: Right Section
Ambient temperature (°C):21, Liquid temperature (°C):21

Satimo Configuration:

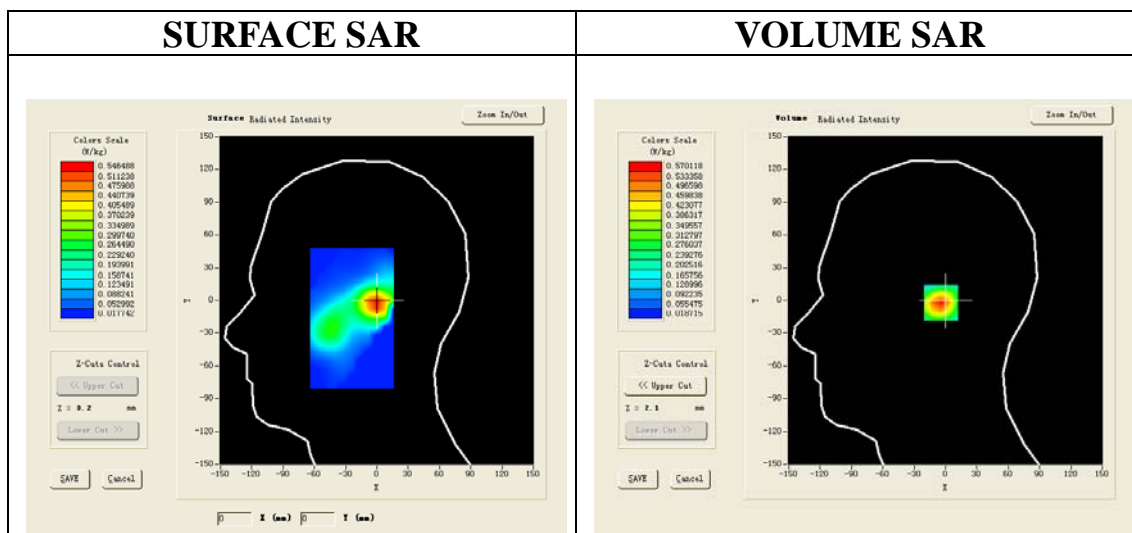
Probe:SSE5; Calibrated: 12/09/2011

- Sensor-Surface: 4mm (Mechanical Surface Detection)
- Phantom: SAM1; Type: SAM
- Measurement SW: OpenSAR V4_02_01

Configuration/ PCS 1900 Middle touch-Right /Area Scan: Measurement grid: dx=20mm, dy=20m

Configuration/ PCS 1900 Middle touch-Right /Zoom Scan: Measurement grid: dx=8mm, dy=8mm, dz=5mm;

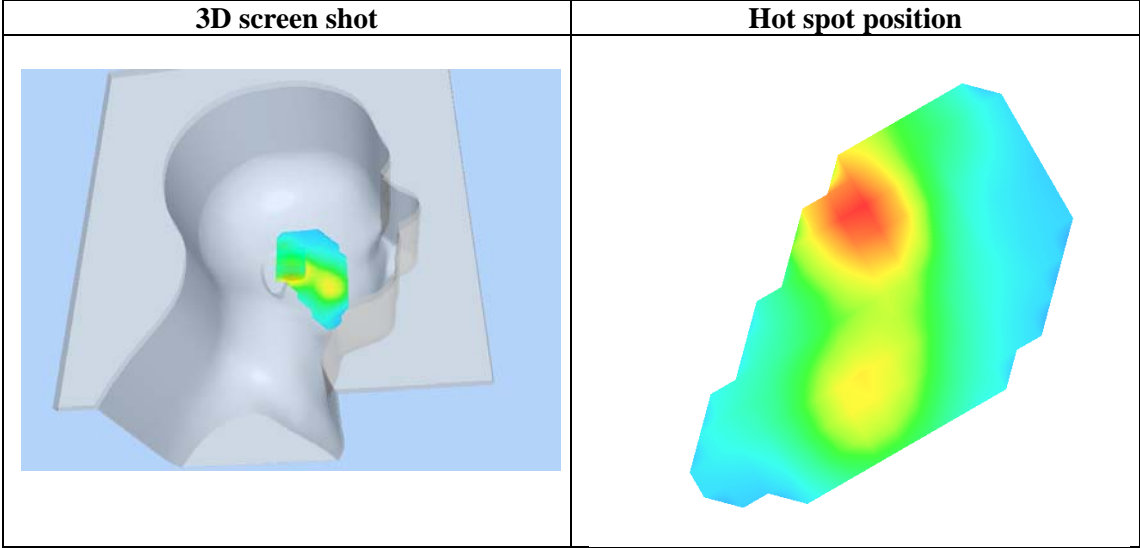
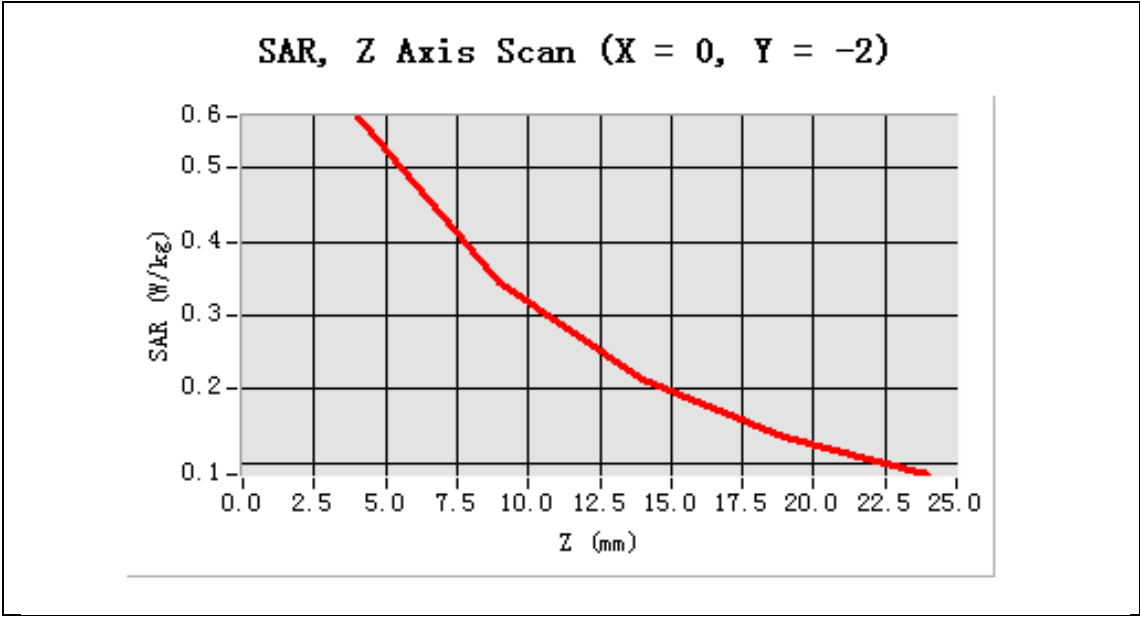
Area Scan	sam_direct_droit2_surf8mm.txt
ZoomScan	5x5x7,dx=8mm dy=8mm dz=5mm,Very fast
Phantom	Right head
Device Position	Cheek
Band	GSM1900
Channels	Middle
Signal	TDMA (Crest factor: 8.0)



Maximum location: X=0.00, Y=-2.00

SAR 10g (W/Kg)	0.292069
SAR 1g (W/Kg)	0.530277

Z (mm)	0.00	4.00	9.00	14.00	19.00
SAR (W/Kg)	0.0000	0.5701	0.3464	0.2126	0.1348



Test Laboratory: AGC Lab
PCS 1900 Mid-tilt-Right
DUT:GSM MOBILE PHONE; Type:VZ102music

Date:APR.23,2012

Communication System: Generic GSM; Communication System Band: PCS 1900; Duty Cycle: 1:8; ConvF=6.42
Frequency: 1880 MHz; Medium parameters used: $f = 1900$ MHz; $\sigma = 1.43$ mho/m; $\epsilon_r = 40.56$; $\rho = 1000$ kg/m³ ;
Phantom section: Flat Section
Ambient temperature (°C):21, Liquid temperature (°C):21

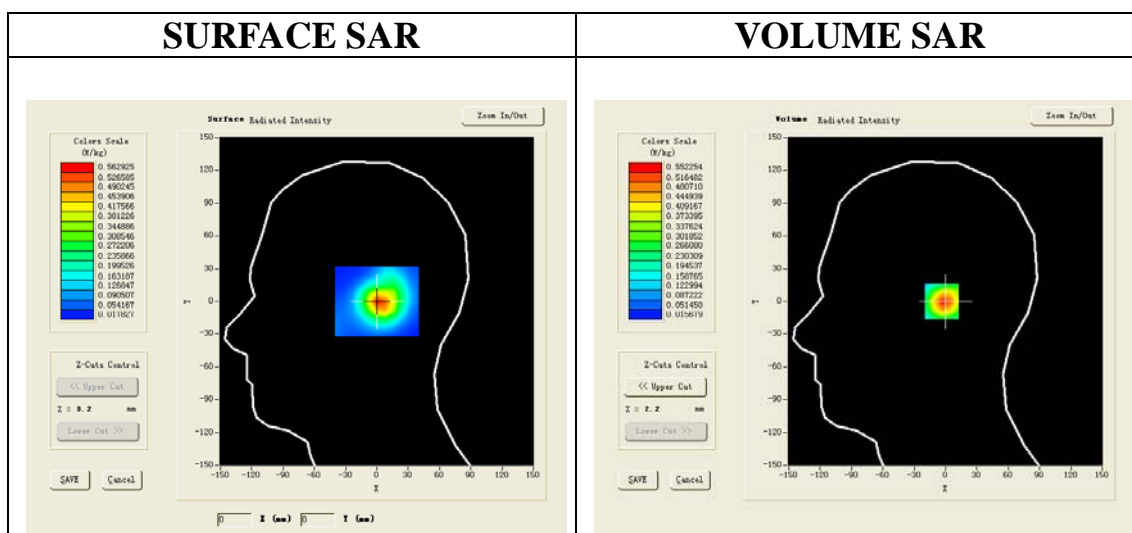
Satimo Configuration:

- Probe:SSE5; Calibrated: 12/09/2011
- Sensor-Surface: 4mm (Mechanical Surface Detection)
- Phantom: SAM1; Type: SAM
- Measurement SW: OpenSAR V4_02_01

Configuration/ PCS 1900 Mid-tilt-Right /Area Scan: Measurement grid: dx=20mm, dy=20mm

Configuration/ PCS 1900 Mid-tilt-Right /Zoom Scan: Measurement grid: dx=8mm, dy=8mm, dz=5mm;

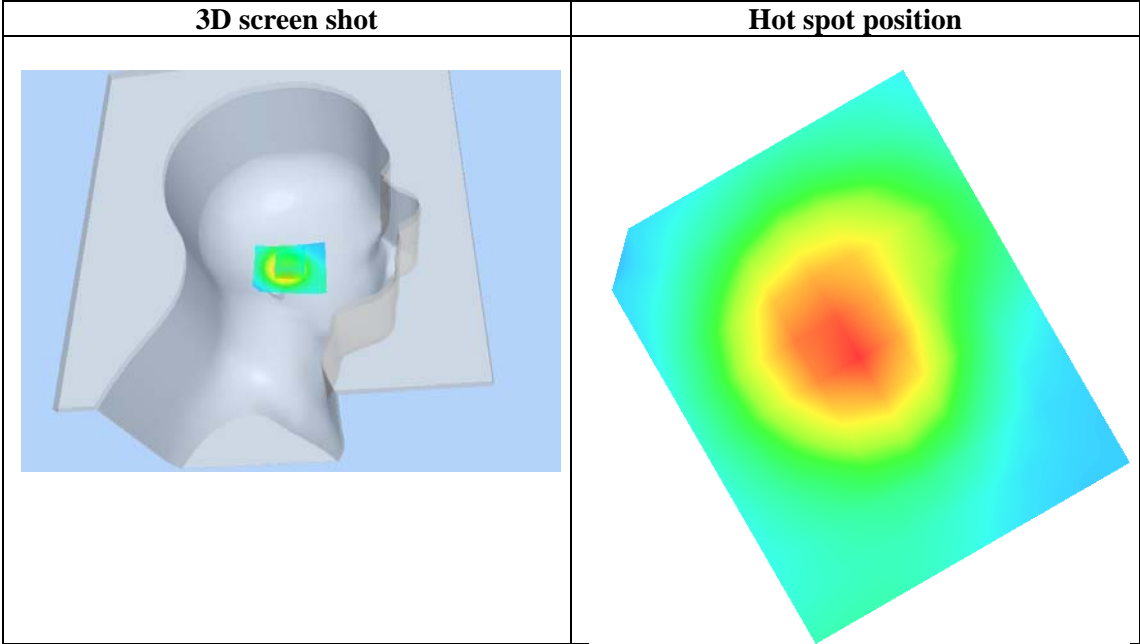
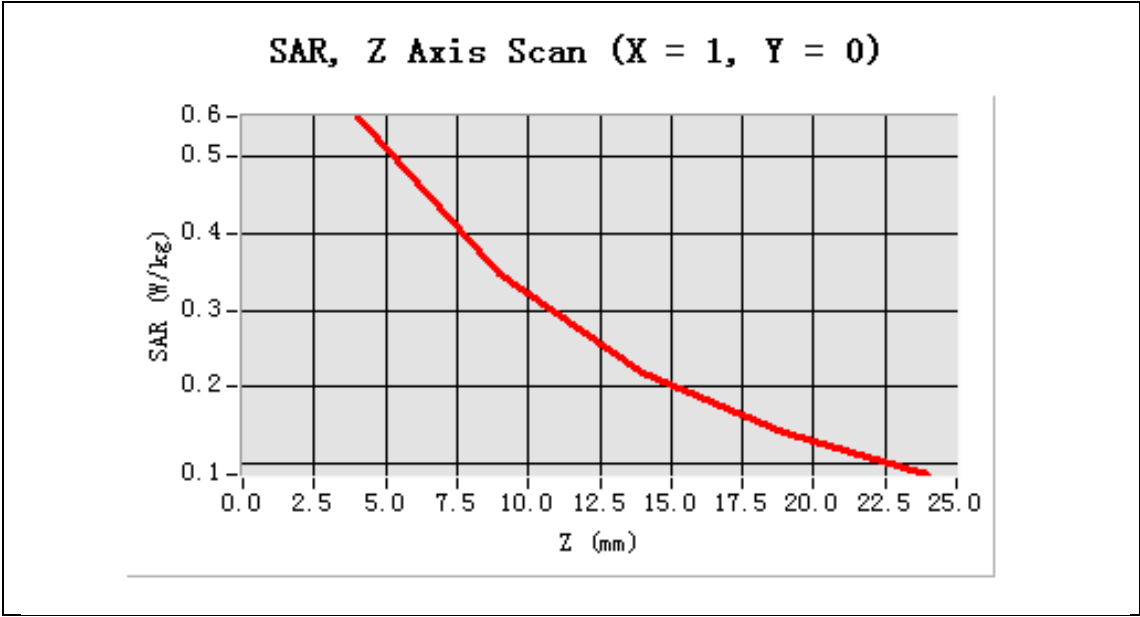
Area Scan	surf_sam_plan.txt
ZoomScan	5x5x7,dx=8mm dy=8mm dz=5mm,Very fast
Phantom	Right Head
Device Position	Title
Band	GSM1900
Channels	Middle
Signal	TDMA (Crest factor: 8.0)



Maximum location: X=1.00, Y=0.00

SAR 10g (W/Kg)	0.287582
SAR 1g (W/Kg)	0.516899

Z (mm)	0.00	4.00	9.00	14.00	19.00
SAR (W/Kg)	0.0000	0.5523	0.3478	0.2191	0.1396



Test Laboratory: AGC Lab
GPRS 1900 Mid-Body-Worn Front
DUT:GSM MOBILE PHONE; Type:VZ102music

Date:APR.23,2012

Communication System: Generic GSM; Communication System Band: PCS 1900; Duty Cycle: 1:8; ConvF=6.42
Frequency: 1880 MHz; Medium parameters used: $f = 1900$ MHz; $\sigma = 1.57$ mho/m; $\epsilon_r = 53.49$; $\rho = 1000$ kg/m³ ;
Phantom section: Flat Section
Ambient temperature (°C):21, Liquid temperature (°C):21

Satimo Configuration:

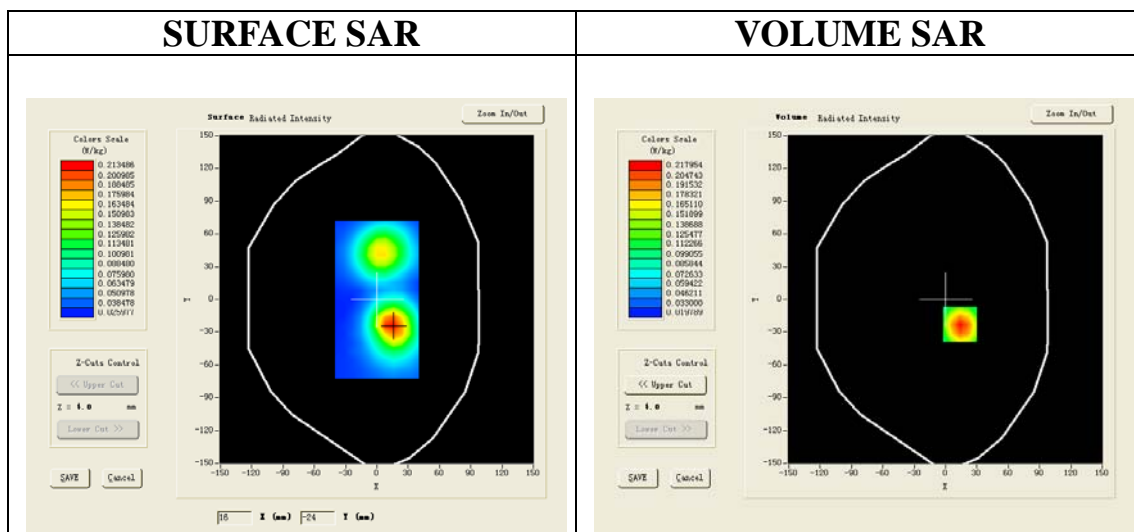
Probe:SSE5; Calibrated: 12/09/2011

- Sensor-Surface: 4mm (Mechanical Surface Detection)
- Phantom: SAM1; Type: SAM
- Measurement SW: OpenSAR V4_02_01

Configuration/GPRS1900 Mid-Body-Worn Front/Area Scan: Measurement grid: dx=20mm, dy=20mm

Configuration/GPRS1900 Mid-Body-Worn Front/Zoom Scan: Measurement grid: dx=8mm, dy=8mm, dz=5m;

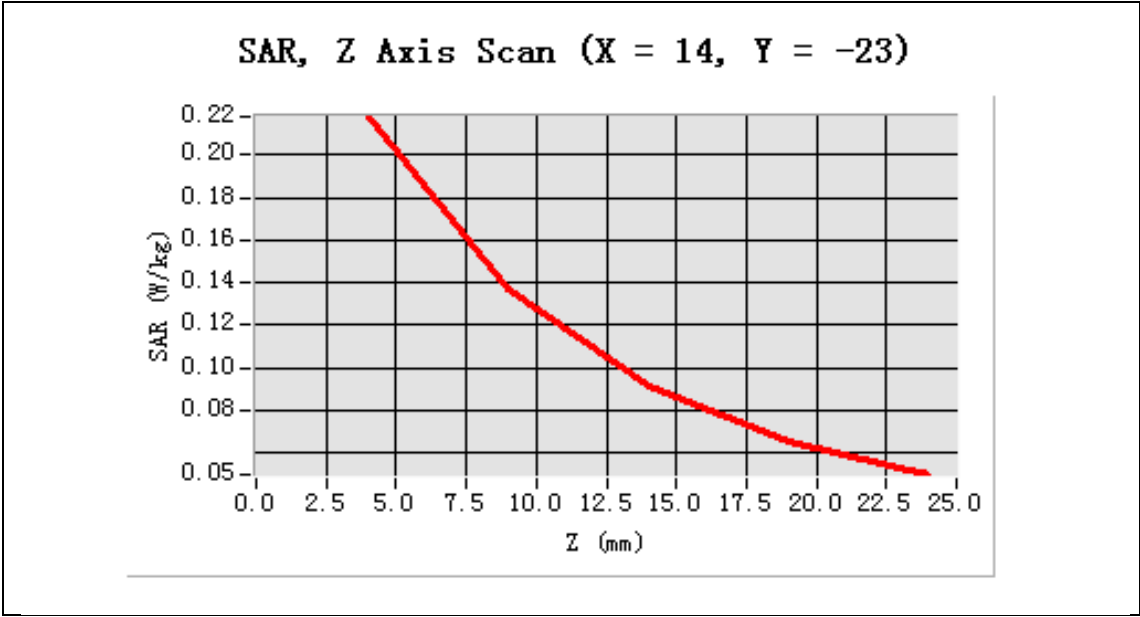
Area Scan	surf_sam_plan.txt
ZoomScan	5x5x7,dx=8mm dy=8mm dz=5mm,Very fast
Phantom	Validation plane
Device Position	Body Front
Band	GSM1900
Channels	Middle
Signal	TDMA (Crest factor:8.0)

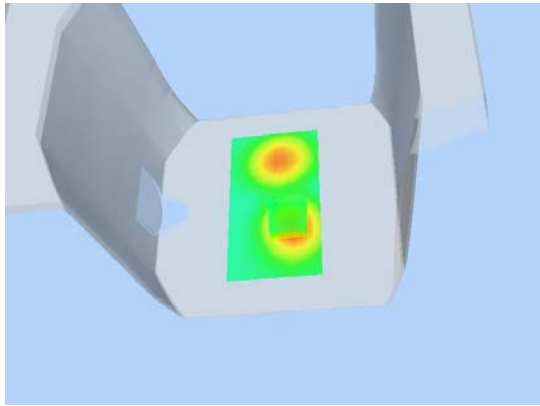
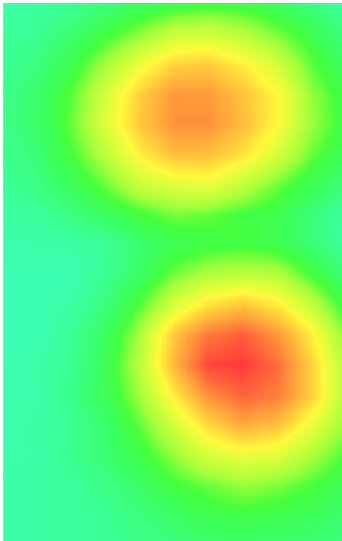


Maximum location: X=14.00, Y=-23.00

SAR 10g (W/Kg)	0.125558
SAR 1g (W/Kg)	0.206074

Z (mm)	0.00	4.00	9.00	14.00	19.00
SAR (W/Kg)	0.0000	0.2180	0.1372	0.0909	0.0657



3D screen shot	Hot spot position
	

Test Laboratory: AGC Lab
GPRS 1900 Mid-body- Worn-Back (MS)
DUT:GSM MOBILE PHONE; Type:VZ102music

Date:APR.23,2012

Communication System: Generic GSM; Communication System Band: PCS 1900; Duty Cycle: 1:8; ConvF=6.42
Frequency: 1880 MHz; Medium parameters used: $f = 1900$ MHz; $\sigma = 1.57$ mho/m; $\epsilon_r = 53.49$; $\rho = 1000$ kg/m³ ;
Phantom section: Flat Section
Ambient temperature (°C):21, Liquid temperature (°C):21

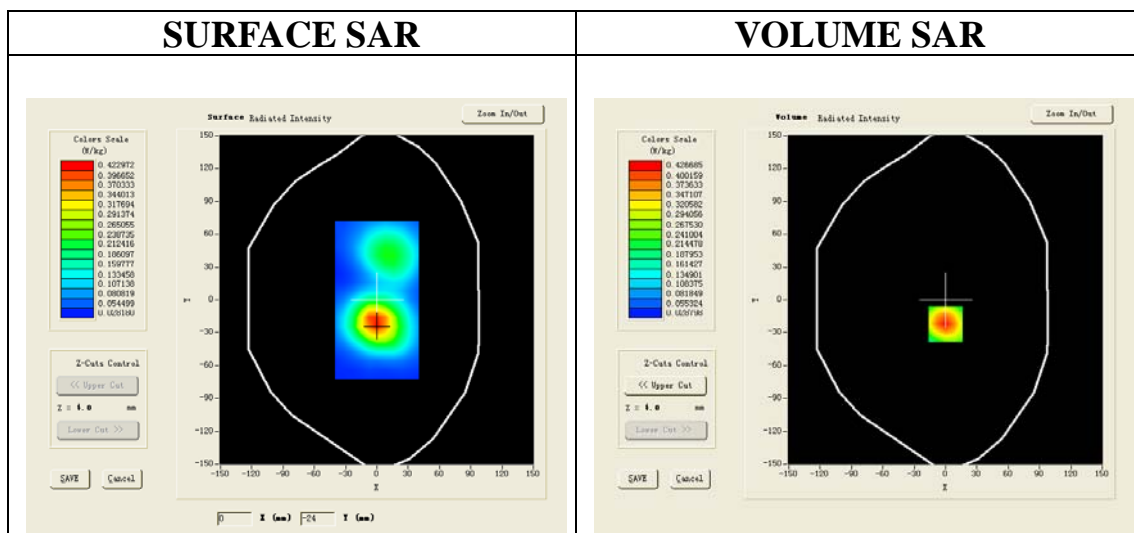
Satimo Configuration:

- Probe:SSE5; Calibrated: 12/09/2011
- Sensor-Surface: 4mm (Mechanical Surface Detection)
- Phantom: SAM1; Type: SAM
- Measurement SW: OpenSAR V4_02_01

Configuration/GPRS1900 Mid-body- Worn-Back (MS) /Area Scan: Measurement grid: dx=20mm, dy=20mm

Configuration/GPRS1900 Mid-body- Worn- Back (MS)/Zoom Scan: Measurement grid: dx=8mm, dy=8mm, dz=5mm;

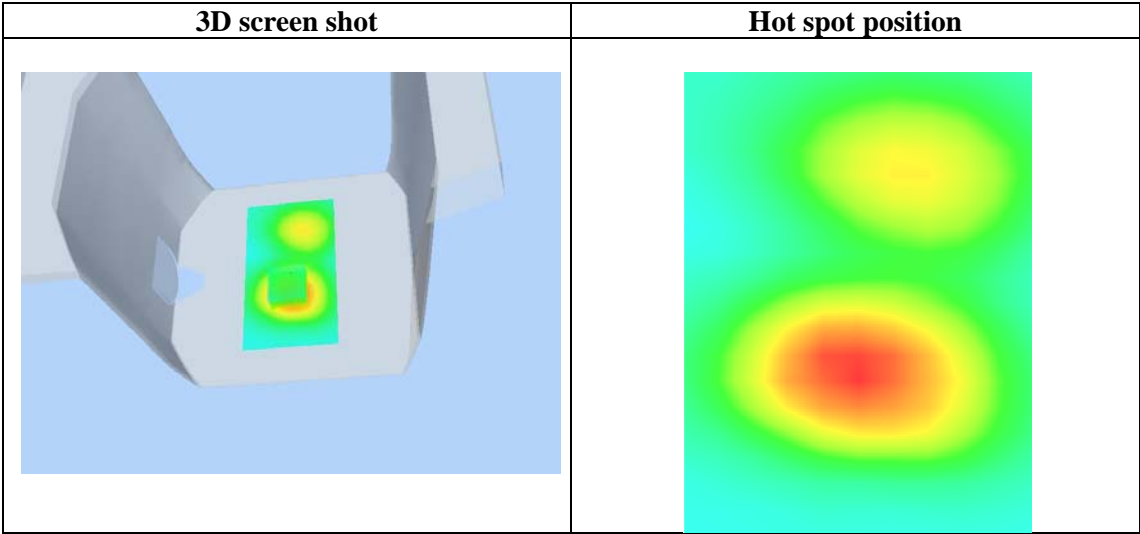
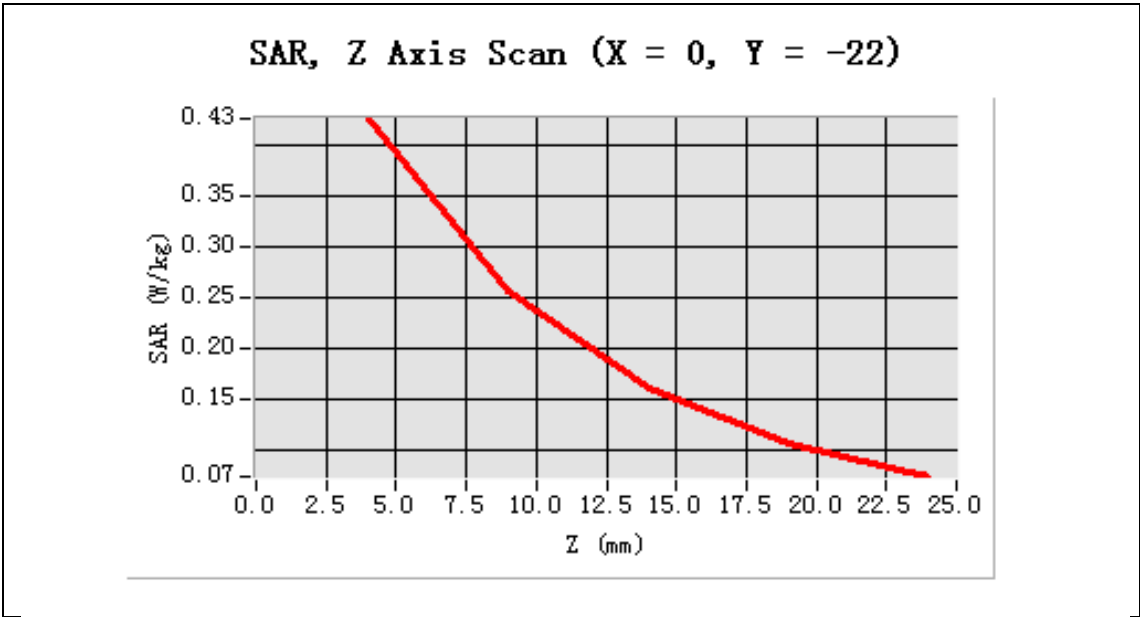
Area Scan	surf_sam_plan.txt
ZoomScan	5x5x7,dx=8mm dy=8mm dz=5mm,Very fast
Phantom	Validation plane
Device Position	Body Back
Band	GSM1900
Channels	Middle
Signal	TDMA (Crest factor: 8.0)



Maximum location: X=0.00, Y=-22.00

SAR 10g (W/Kg)	0.236594
SAR 1g (W/Kg)	0.402299

Z (mm)	0.00	4.00	9.00	14.00	19.00
SAR (W/Kg)	0.0000	0.4267	0.2570	0.1601	0.1069



Test Laboratory: AGC Lab
PCS 1900 Mid-body- Worn-Back (MS) (With earphone)
DUT:GSM MOBILE PHONE; Type:VZ102music

Date:APR.23,2012

Communication System: Generic GSM; Communication System Band: PCS 1900; Duty Cycle: 1:8; ConvF=6.42
Frequency: 1880 MHz; Medium parameters used: $f = 1900$ MHz; $\sigma = 1.57$ mho/m; $\epsilon_r = 53.49$;
 $\rho = 1000$ kg/m³ ; Phantom section: Flat Section
Ambient temperature (°C):21, Liquid temperature (°C):21

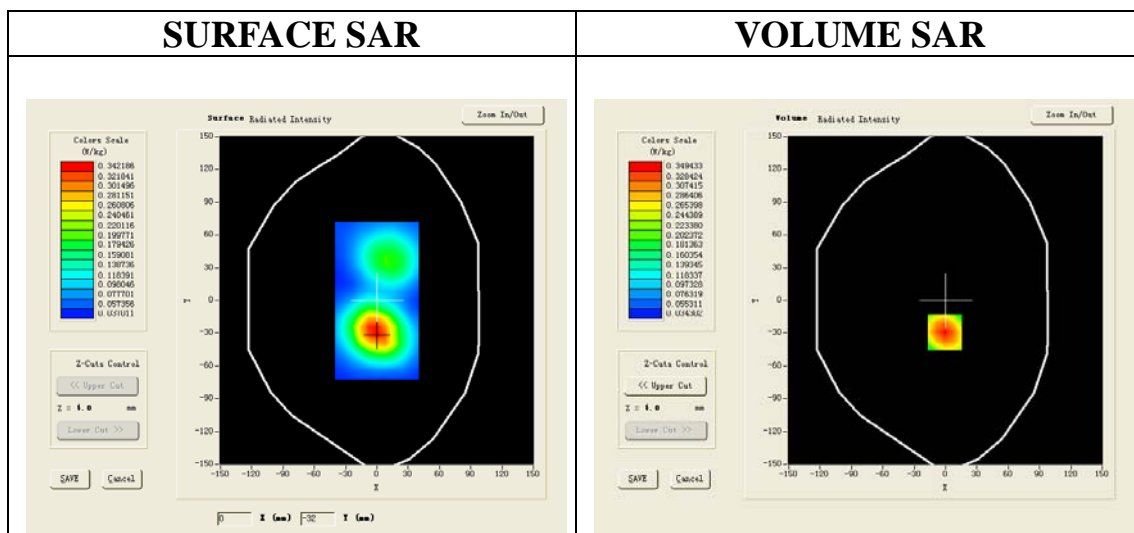
Satimo Configuration:

- Probe:SSE5; Calibrated: 12/09/2011
- Sensor-Surface: 4mm (Mechanical Surface Detection)
- Phantom: SAM1; Type: SAM
- Measurement SW: OpenSAR V4_02_01

Configuration/PCS 1900 Mid-body- Worn-Back (MS) (With earphone) /Area Scan: Measurement grid:
dx=20mm, dy=20mm

Configuration/PCS 1900 Mid-body- Worn-Back (MS) (With earphone) /Zoom Scan: Measurement grid:
dx=8mm,
dy=8mm, dz=5mm;

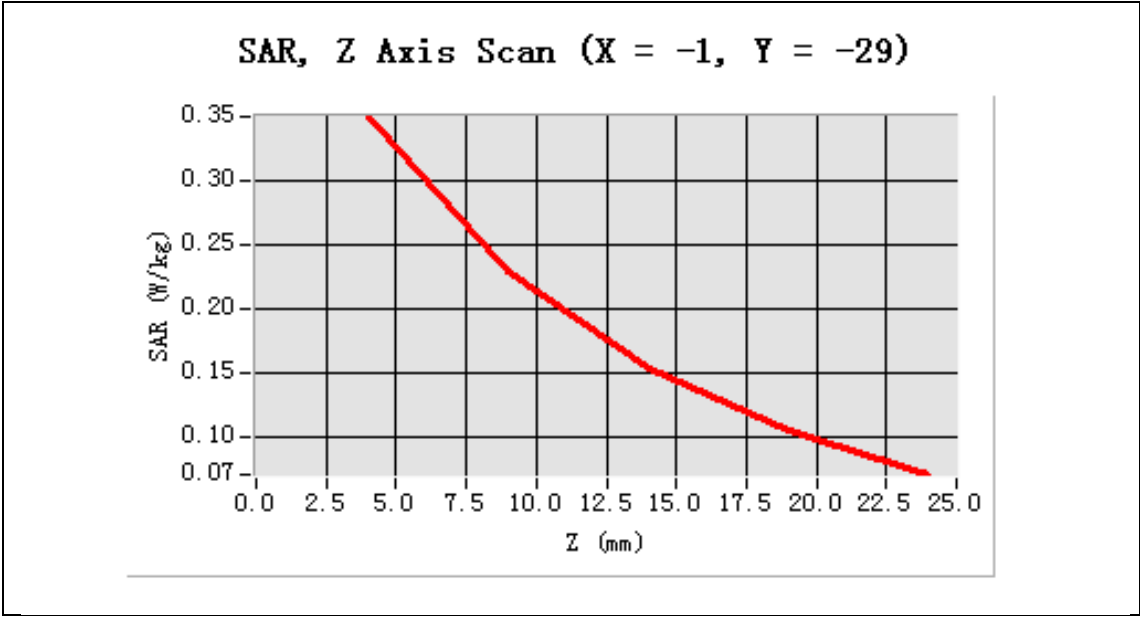
Area Scan	surf_sam_plan.txt
ZoomScan	5x5x7,dx=8mm dy=8mm dz=5mm,Very fast
Phantom	Validation plane
Device Position	Body Back
Band	GSM1900
Channels	Middle
Signal	TDMA (Crest factor: 8)



Maximum location: X=-1.00, Y=-29.00

SAR 10g (W/Kg)	0.208663
SAR 1g (W/Kg)	0.331137

Z (mm)	0.00	4.00	9.00	14.00	19.00
SAR (W/Kg)	0.0000	0.3494	0.2299	0.1534	0.1050



3D screen shot	Hot spot position
