



Your Solutions Partner

JR7Q00232 Antenna Specification

- 1. Antenna Photo / Page 3**
- 2. Electrical Characteristics / Page 4**
- 3. Antenna - S Parameter Test Data / Page 5**
- 4. Antenna - Radiation Pattern Test Data / Page 6. Page 7**
- 5. Mechanical Drawing / Page 8**

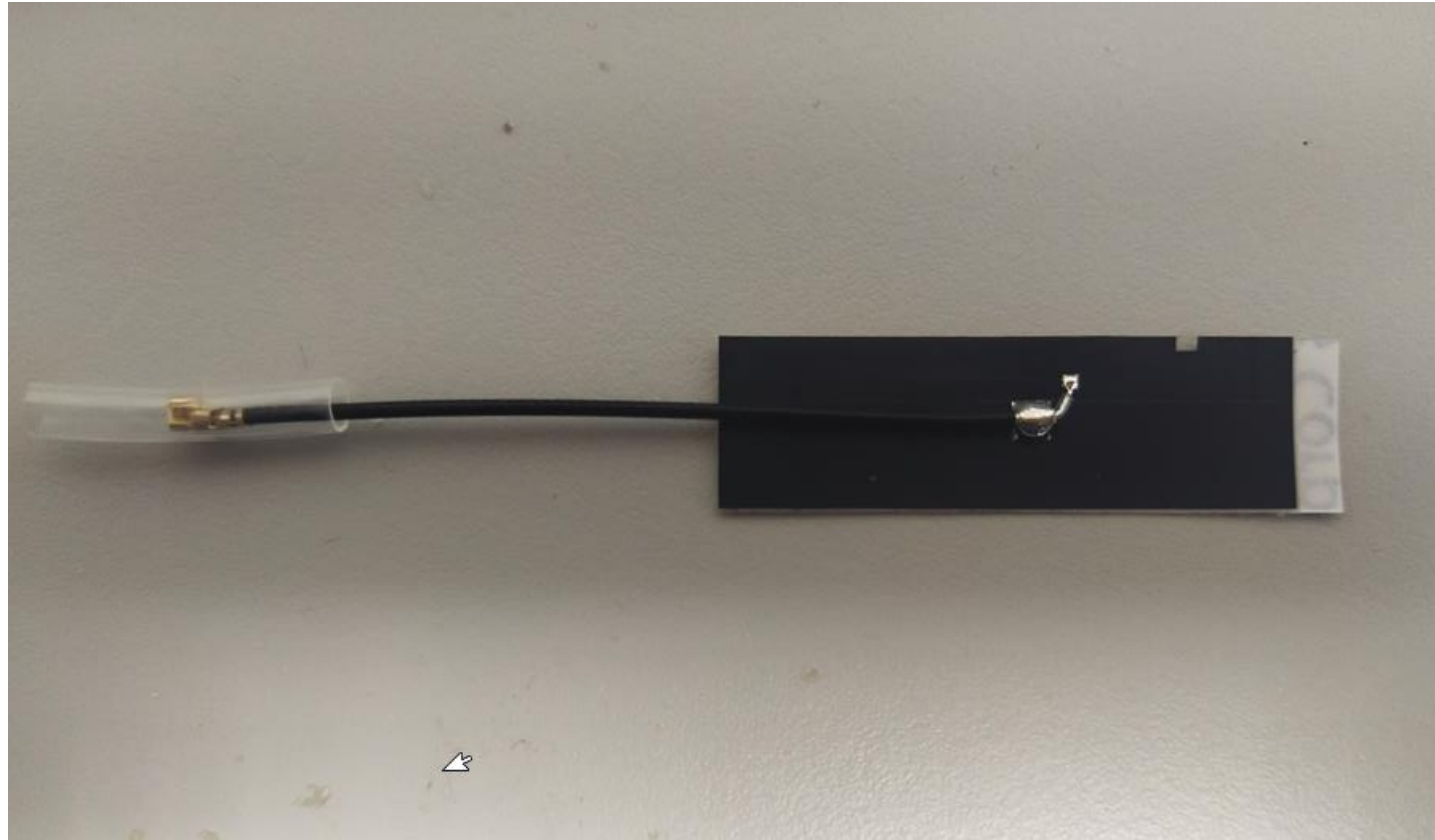
Date:2023.01.03



Your Solutions Partner

Antenna Photo

鴻呈實業股份有限公司
新北市中和區中正路880號7樓
TEL : 886-2-3234-3038
FAX : 886-2-3234-3056
Web Site : www.vso-corp.com



Date:2023.01.03



Your Solutions Partner

Electrical Characteristics

鴻呈實業股份有限公司
新北市中和區中正路880號7樓
TEL : 886-2-3234-3038
FAX : 886-2-3234-3056
Web Site : www.vso-corp.com

Frequency	2400 ~ 2500 MHz 5150 ~ 5850 MHz
Return loss	>= -7dbm @ 2400 ~ 2500 MHz >= -10 dbm@ 5150 ~ 5850 MHz
Peak Gain	3.0 dBi @ 2400 ~ 2500 MHz 3.0 dBi @ 5150 ~ 5850 MHz
Antenna Type	PIFA
Impedance	50 Ohm
Polarization	Linear
Cable Type	RF-1.13mm
Connector Type	I-PEX
PCB Type	FPC

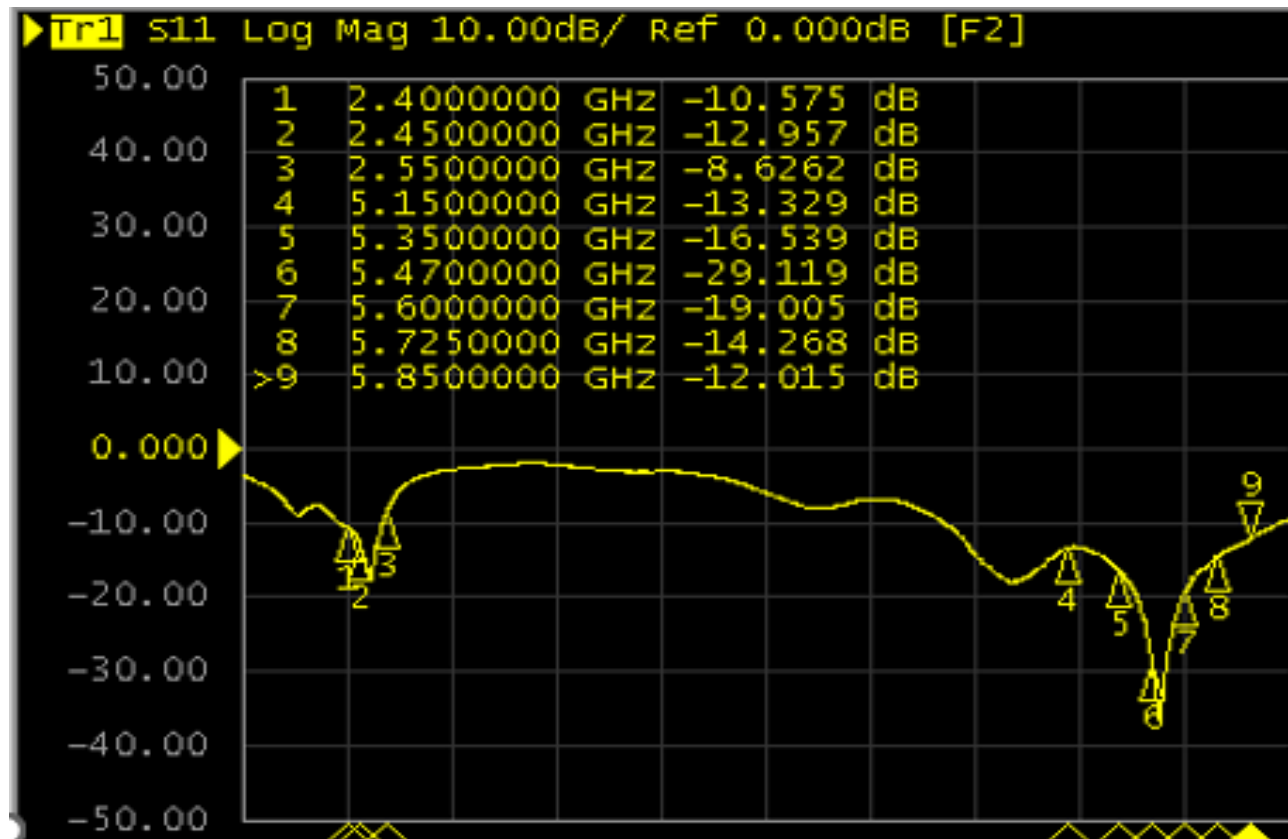
Date:2023.01.03



Your Solutions Partner

Antenna - S Parameter Test Data

鴻呈實業股份有限公司
新北市中和區中正路880號7樓
TEL : 886-2-3234-3038
FAX : 886-2-3234-3056
Web Site : www.vso-corp.com



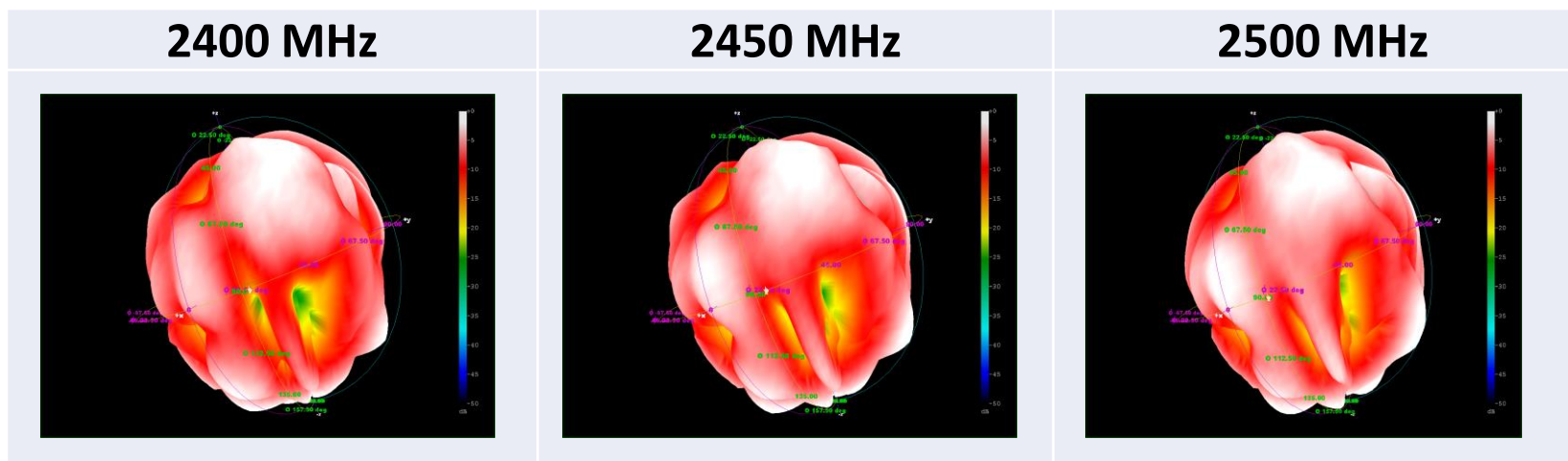
Date:2023.01.03



Your Solutions Partner

Electrical Characteristics

鴻呈實業股份有限公司
新北市中和區中正路880號7樓
TEL : 886-2-3234-3038
FAX : 886-2-3234-3056
Web Site : www.vso-corp.com



Frequency (MHz)	2400	2450	2500
Peak Gain (dBi)	2.5	2.6	2.8
Efficiency (%)	49	57	56

Date:2023.01.03

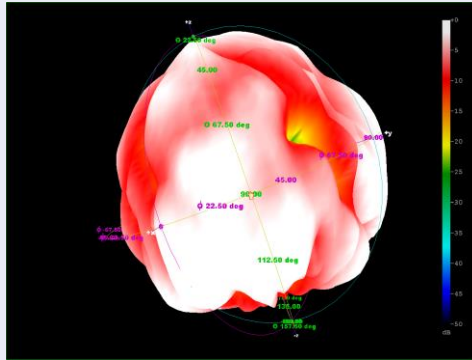


Your Solutions Partner

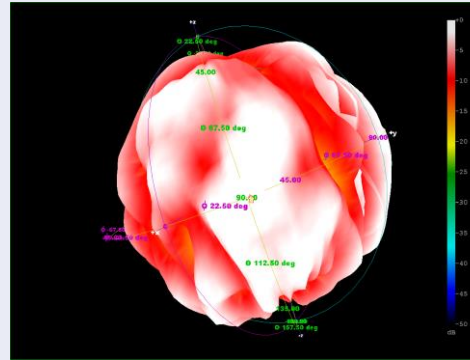
Electrical Characteristics

鴻呈實業股份有限公司
新北市中和區中正路880號7樓
TEL : 886-2-3234-3038
FAX : 886-2-3234-3056
Web Site : www.vso-corp.com

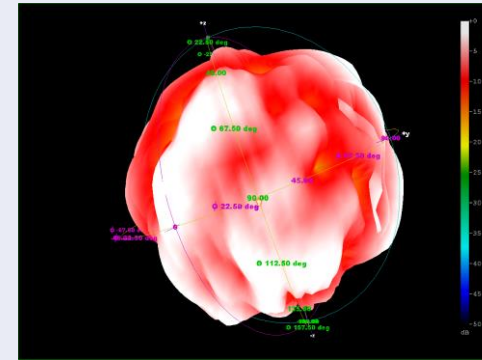
5150 MHz



5470 MHz



55850 MHz



Frequency (MHz)	5150	5250	5350	5470	5600	5725	5785	5850
Peak Gain (dBi)	2.9	2.2	2	2.6	1.8	2.4	2.6	2.9
Efficiency (%)	56	50	52	54	55	55	57	57

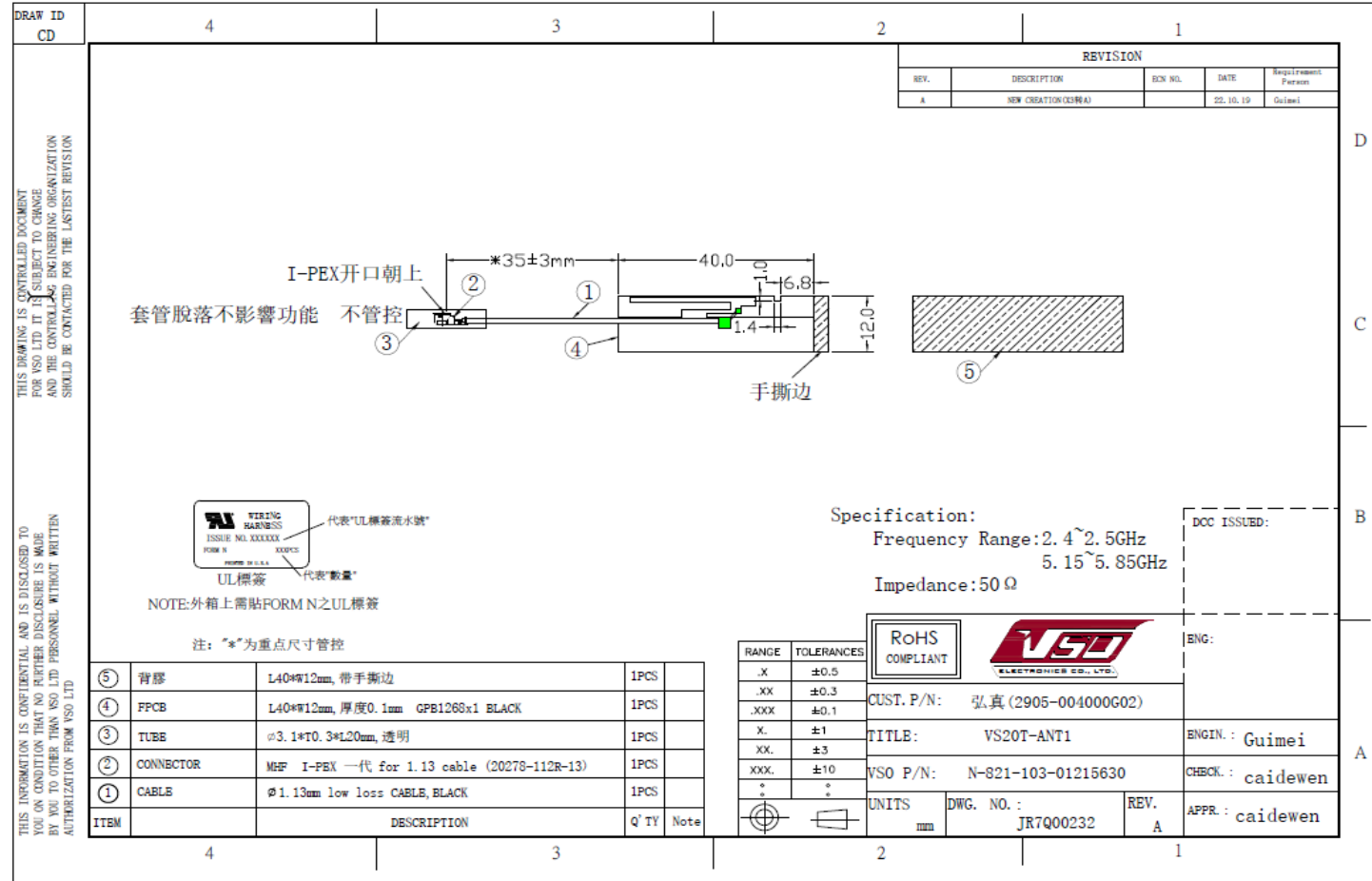
Date:2023.01.03



Your Solutions Partner

Mechanical Drawing

鴻呈實業股份有限公司
 新北市中和區中正路880號7樓
 TEL : 886-2-3234-3038
 FAX : 886-2-3234-3056
 Web Site : www.vso-corp.com



表单编号:VSO-QP-07-F11-A

Date:2023.01.03