

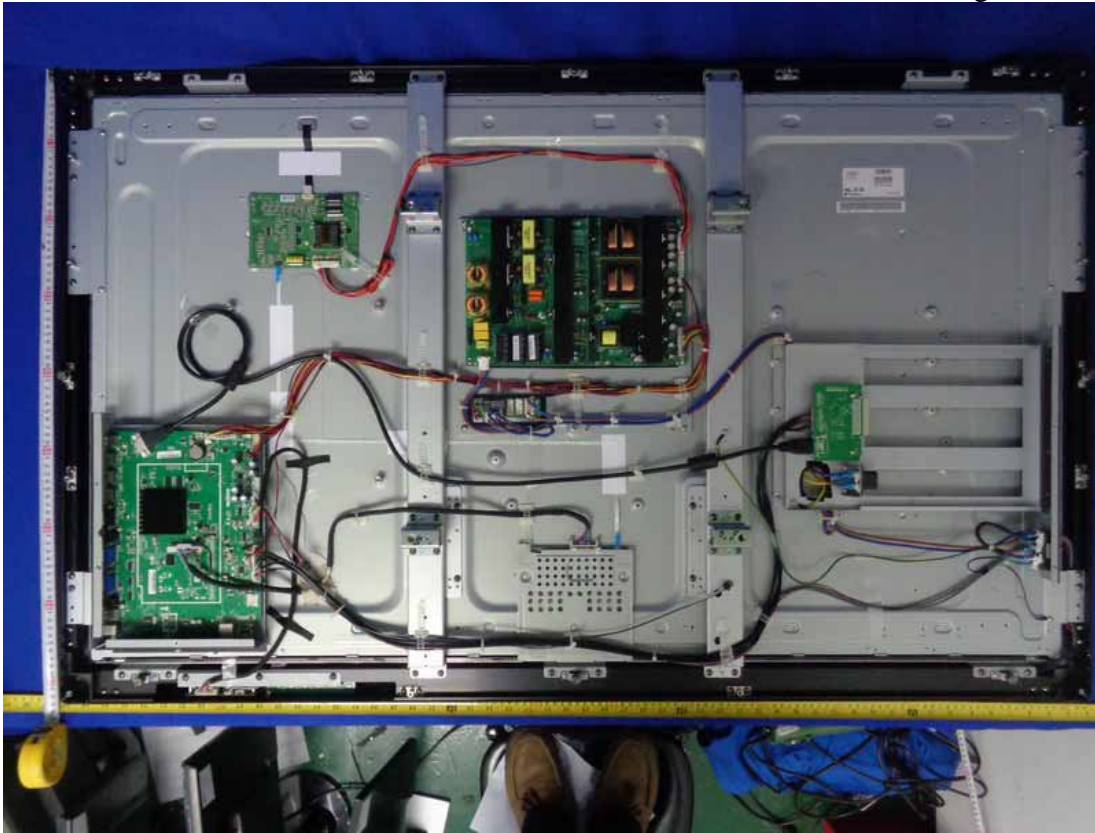
**Figure 5**  
Signal Port of the EUT



**Figure 6**  
Inside Configuration of the EUT



**Figure 7**  
Inside Configuration of the EUT



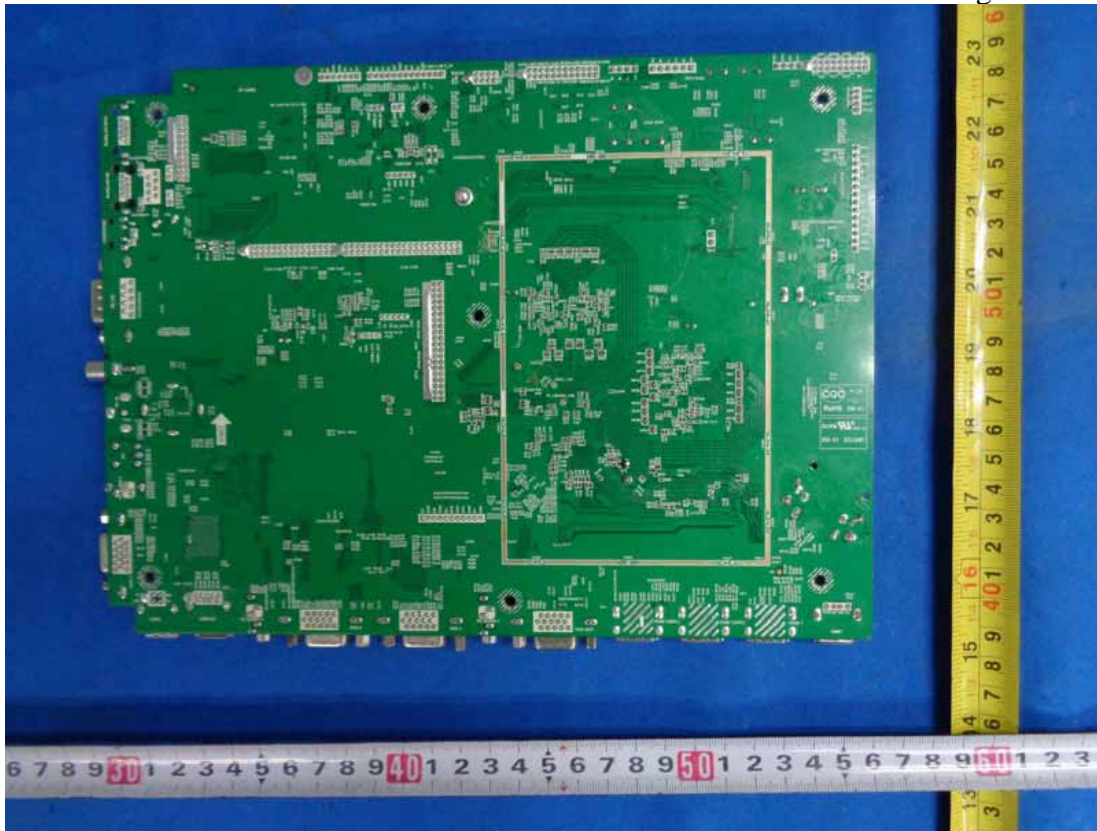
**Figure 8**  
Label of LCD Panel



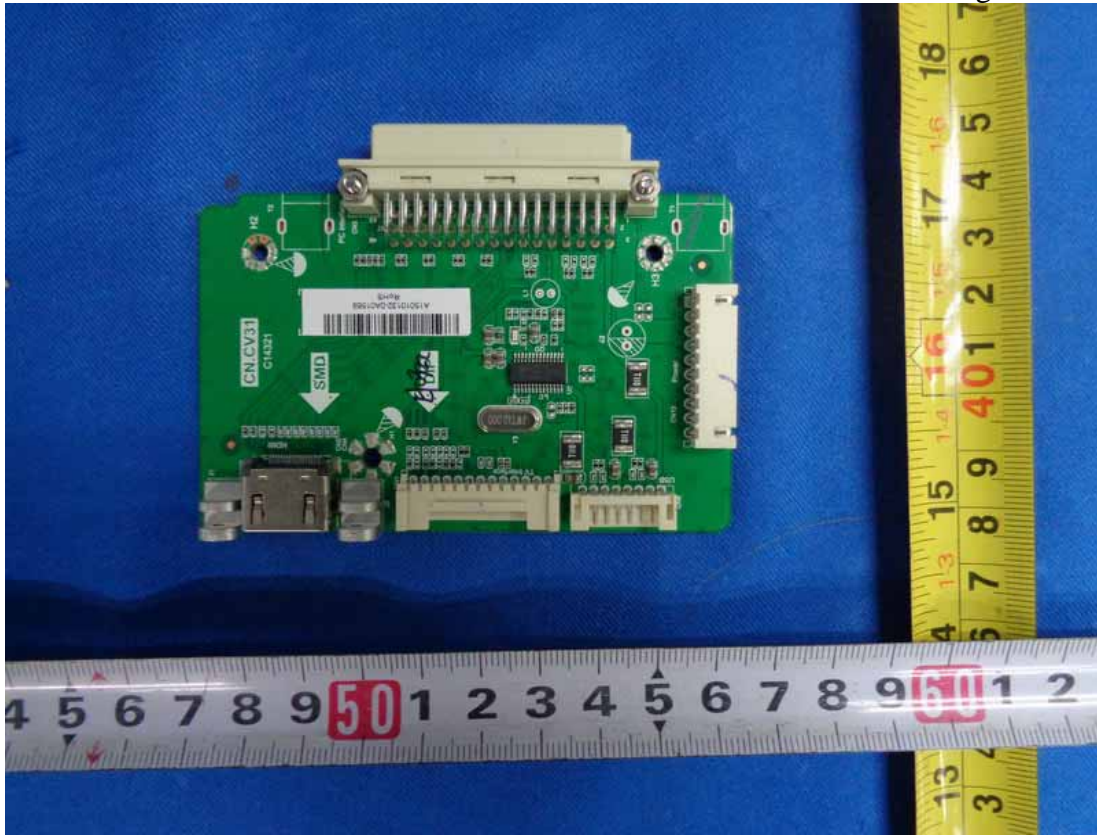
**Figure 9**  
Inside Configuration of the EUT



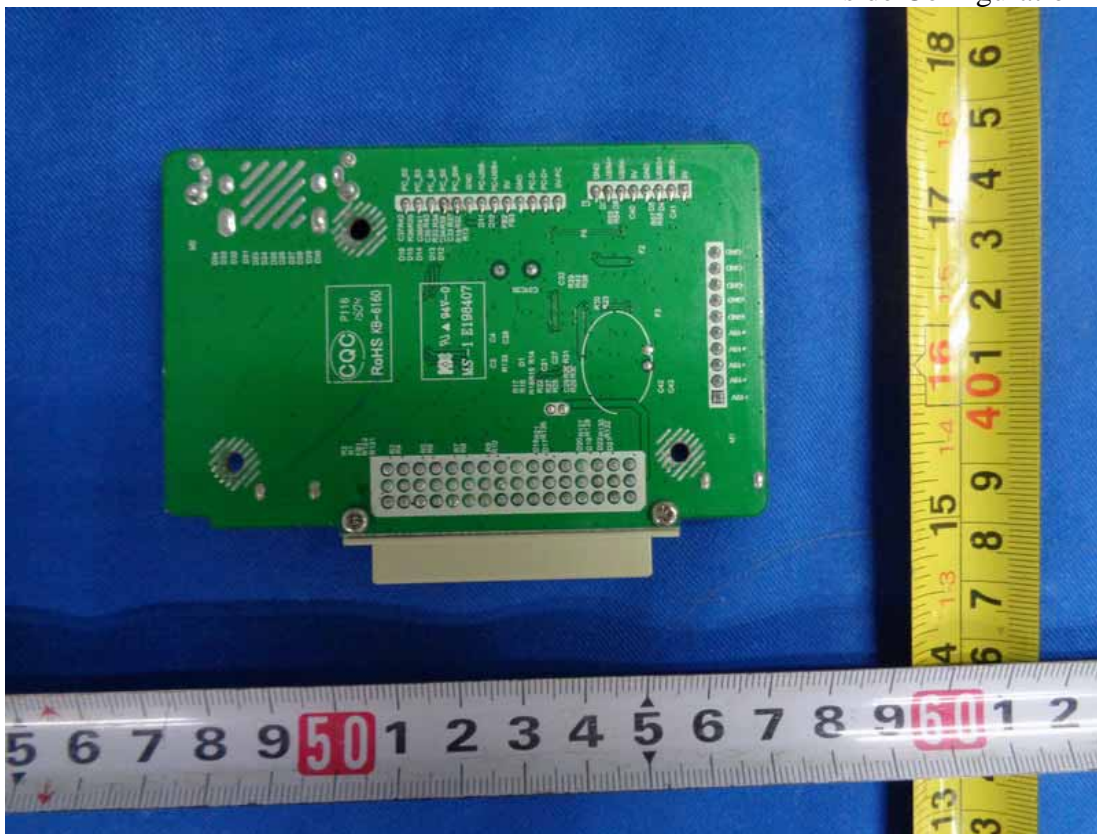
**Figure 10**  
Inside Configuration of the EUT



**Figure 11**  
Inside Configuration of the EUT



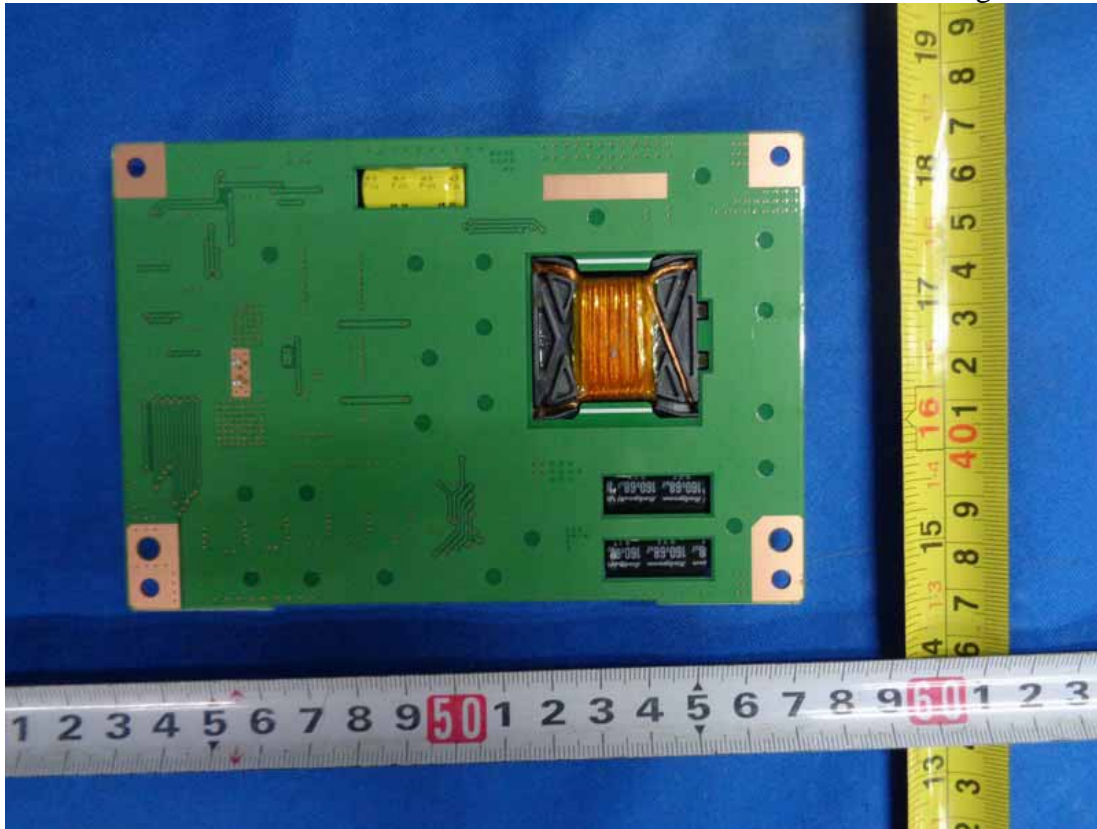
**Figure 12**  
Inside Configuration of the EUT



**Figure 13**  
Inside Configuration of the EUT



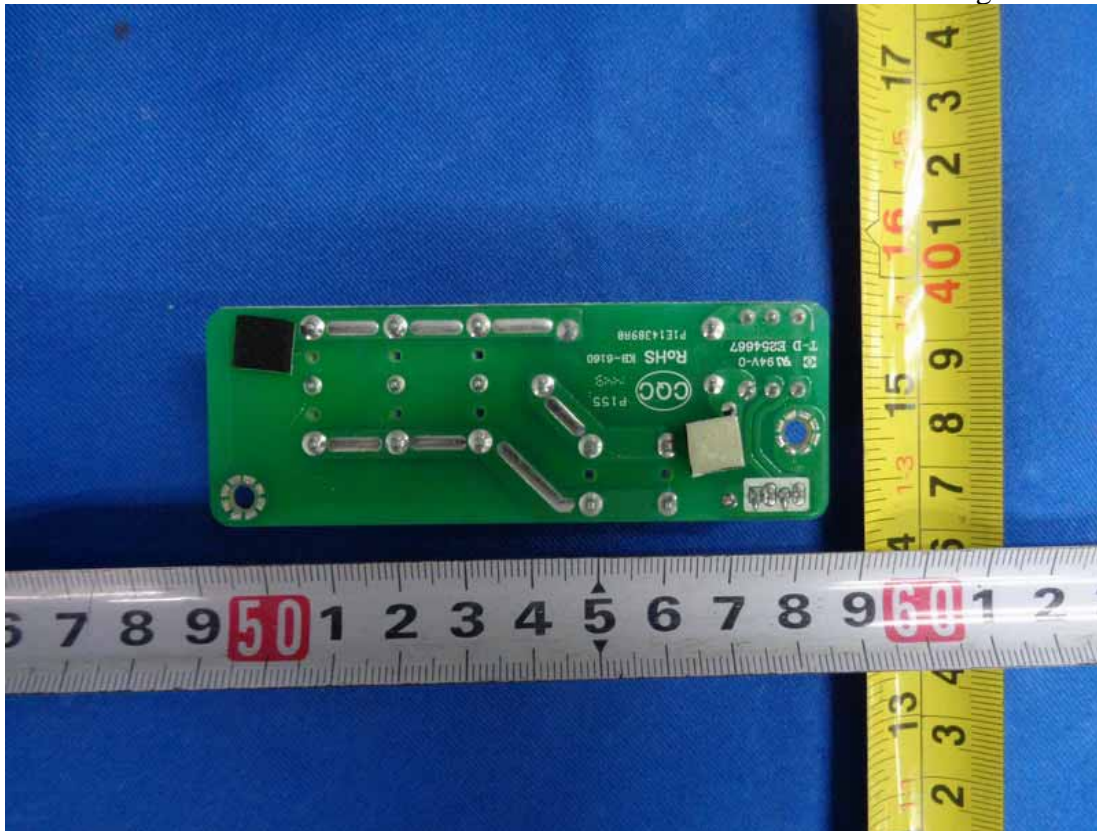
**Figure 14**  
Inside Configuration of the EUT



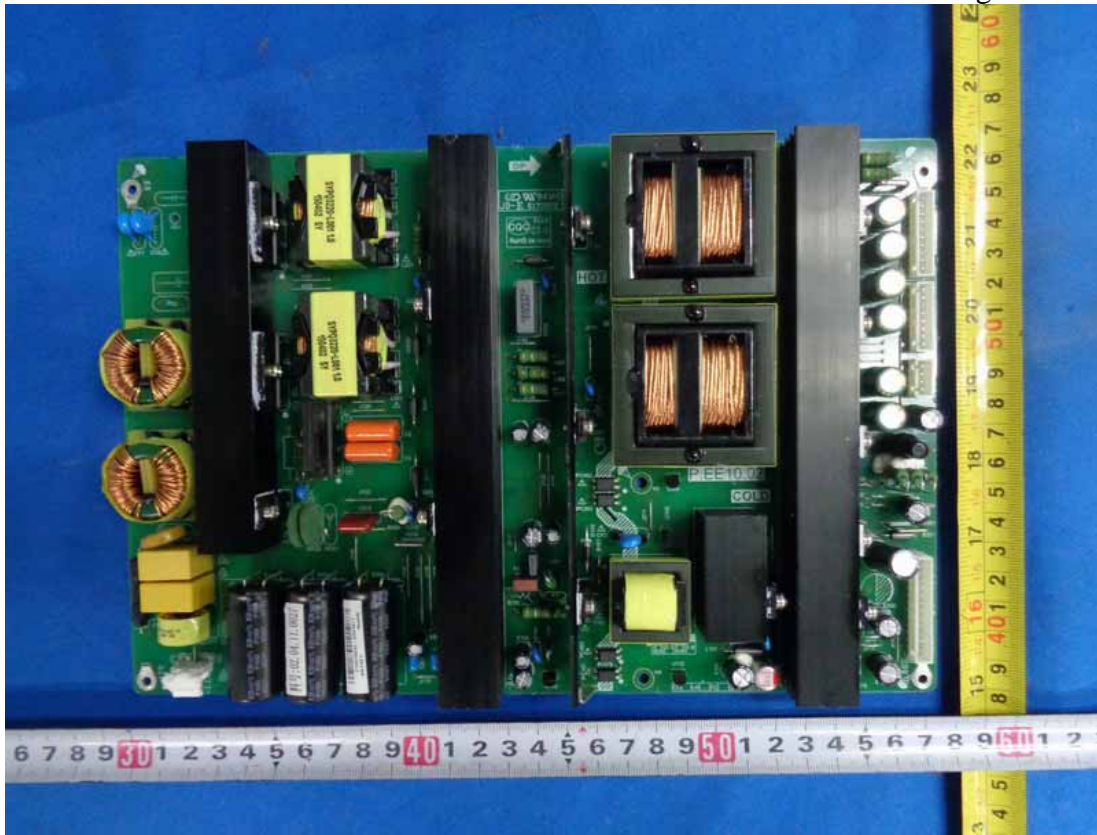
**Figure 15**  
Inside Configuration of the EUT



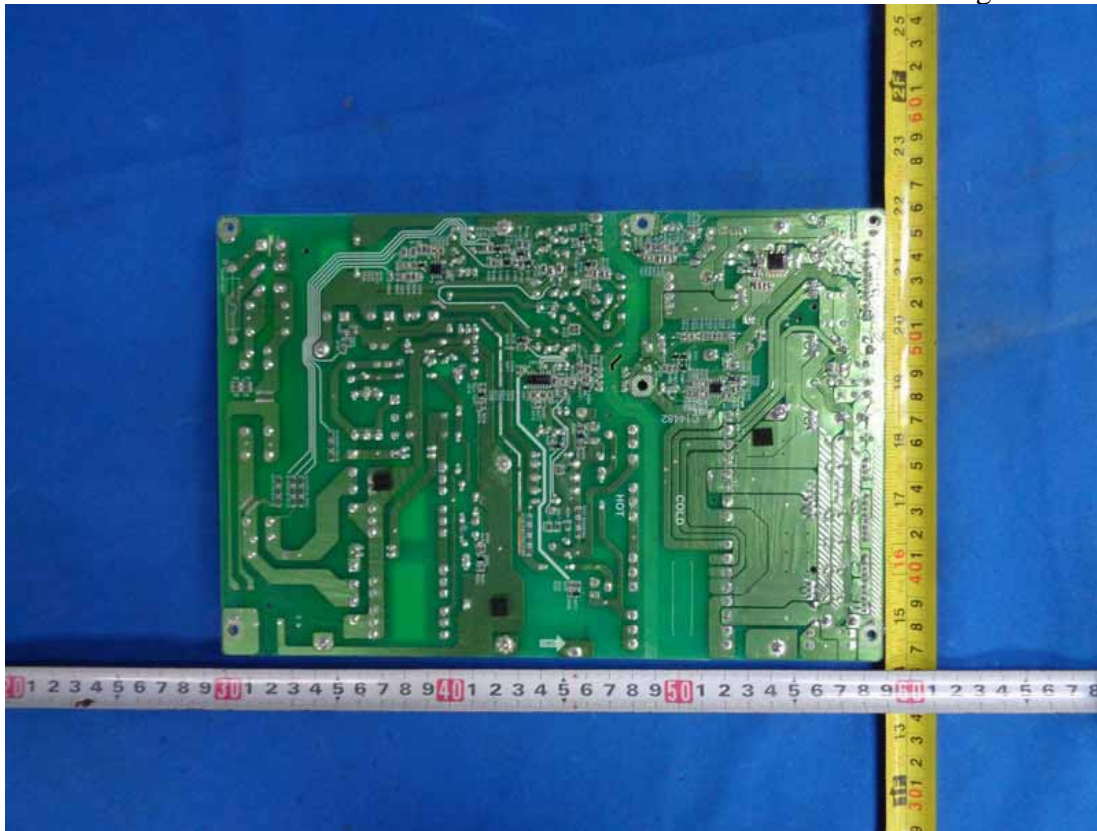
**Figure 16**  
Inside Configuration of the EUT



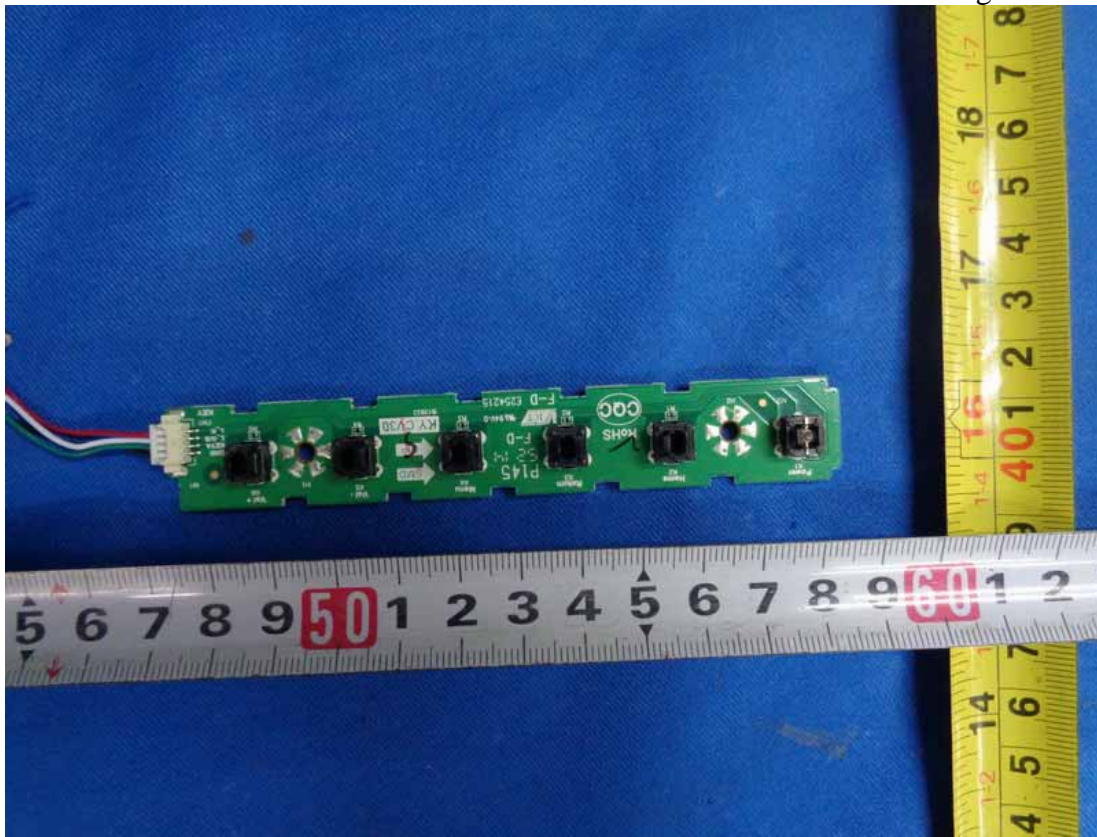
**Figure 17**  
Inside Configuration of the EUT



**Figure 18**  
Inside Configuration of the EUT



**Figure 19**  
Inside Configuration of the EUT



**Figure 20**  
Inside Configuration of the EUT

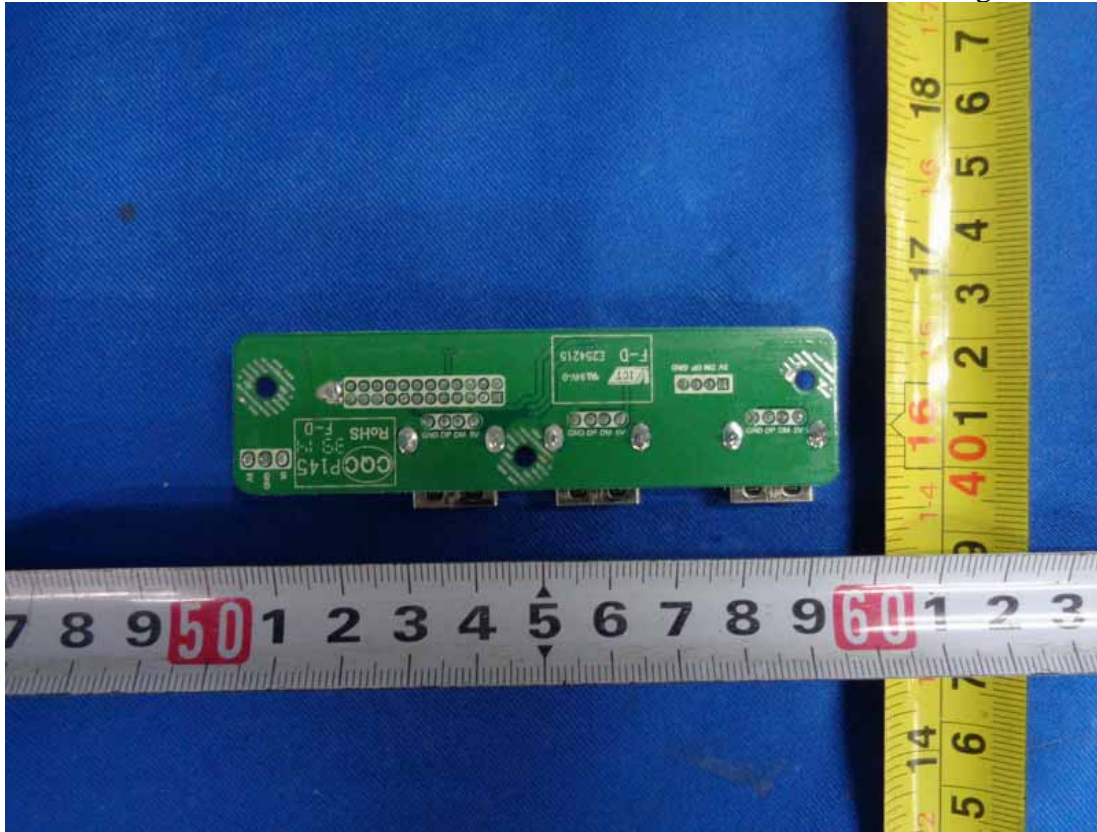




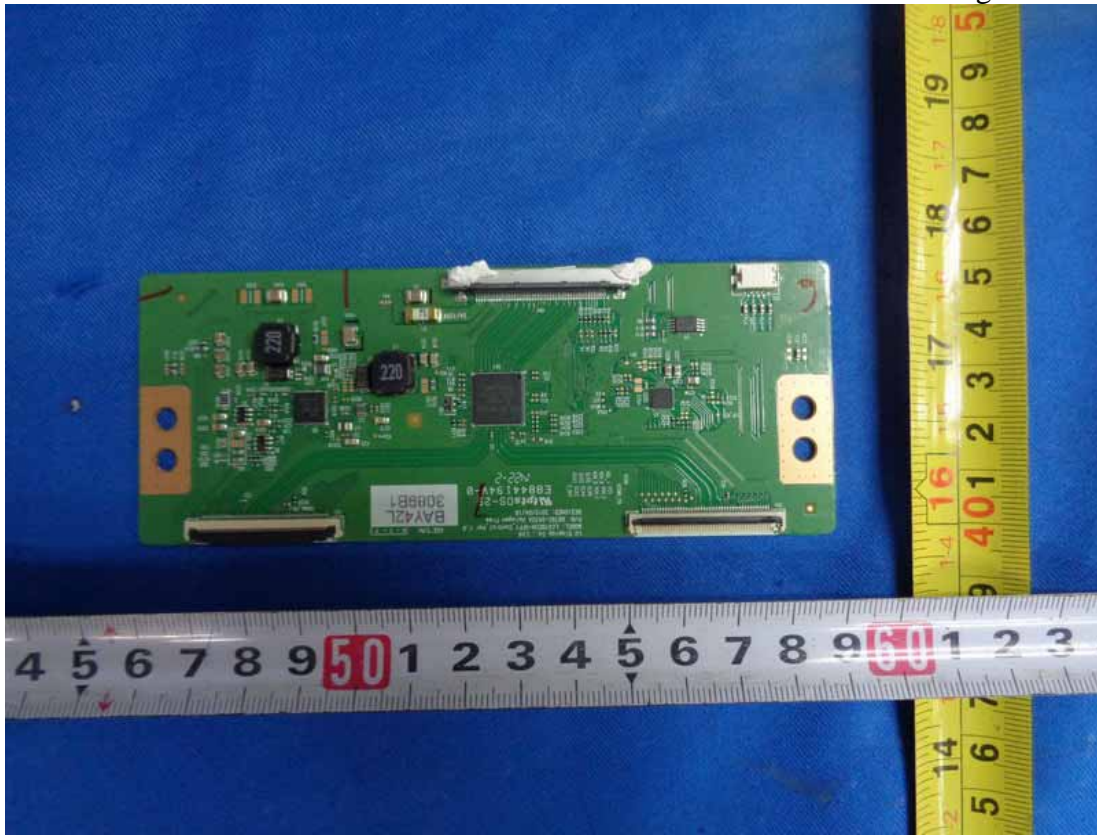
**Figure 21**  
Inside Configuration of the EUT



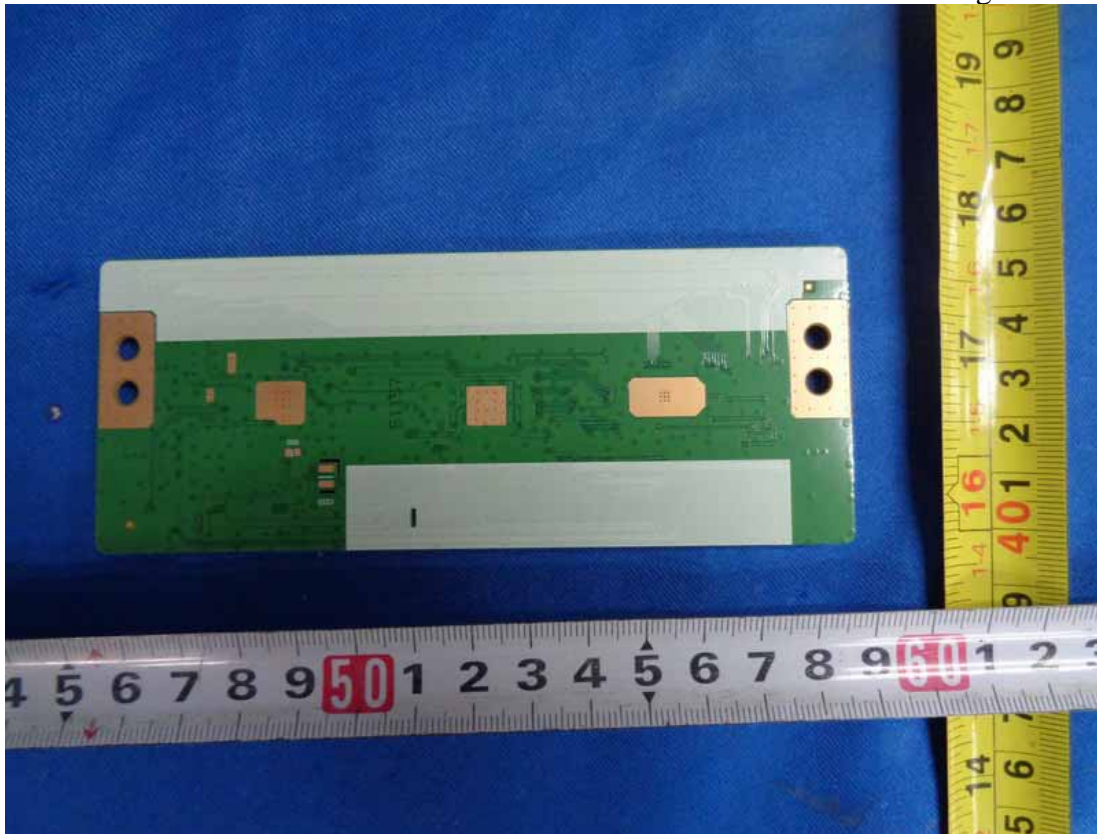
**Figure 22**  
Inside Configuration of the EUT



**Figure 23**  
Inside Configuration of the EUT



**Figure 24**  
Inside Configuration of the EUT



**Figure 25**  
Speaker



**Figure 26**  
Speaker



**Figure 27**  
Remote



**Figure 28**  
Remote



**Figure 29**  
5.0m VGA Cable



**Figure 30**  
5.0m USB Cable



**Figure 31**  
5.0m USB Cable

