
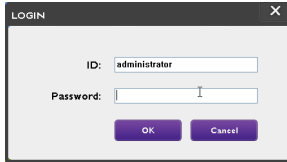


## Launching Multi-Display Administrator

To launch Multi-Display Administrator, click Windows **Start** button and select **Programs > BenQ > MDA > MDA**. You can also double-click the **MDA** icon  on Windows Desktop to launch the program.

A dialog prompting you to enter ID and password will appear. Enter the default password **0000** and click **OK**.



The screenshot shows a 'LOGIN' dialog box with a title bar containing 'LOGIN' and a close button 'X'. Inside the dialog, there are two input fields: 'ID:' with the text 'administrator' and 'Password:' which is currently empty. Below the input fields are two buttons: 'OK' and 'Cancel'.



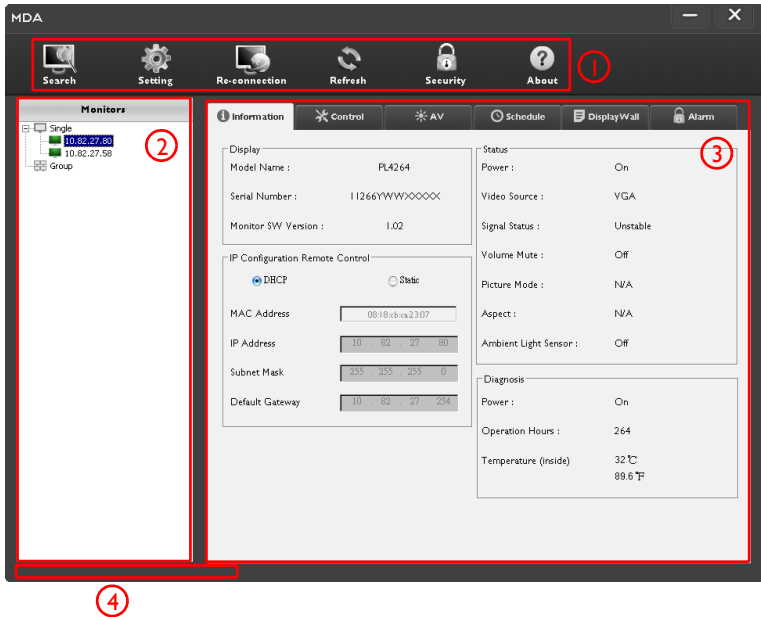
You can change the ID and password in the **Security** menu. Refer to [Changing login ID and password on page 44](#) for more information.

The Multi-Display Administrator home screen will appear if you are successfully logged in.




## Overview of components and functions




The Multi-Display Administrator home screen mainly consists of the following components:

1. **Toolbar:** provides functions for connection and security settings.
2. **Monitor list panel:** lists displays that are connected to the computer and found on the network.
3. **Control panel:** provides controls and settings for the display (and display groups) selected on the Monitor list panel.
4. **Notification area:** shows notifications and results of command execution.

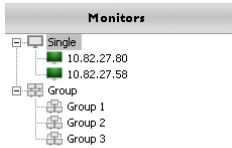


## Toolbar





	Searches displays that are connected to the network and adds them to the Monitor list panel.
	Sets the connection mode between the computer and displays to <b>Network</b> .
	Allows you to manually re-connect to the display or display group selected on the Monitor list panel.

 Refresh	Refreshes the information and setting values on the Control panel (Information, Control, AV, and Schedule).
 Security	Allows you to change the user ID and password that are required for logging in to the Multi-Display Administrator.
 About	Changes the program's user interface language, shows software version and opens the online Help.

## Monitor list panel

<p>Ethernet connection</p> 	<p>The Monitor list panel lists displays that are currently connected to the computer and found on the network.</p> <ul style="list-style-type: none"> <li>• Displays found on the network will be listed under the <b>Single</b> node.</li> <li>• Display groups will be listed under the <b>Group</b> node. You can create and edit display groups for management purposes. For example, if you select a display group and change settings on the Control panel, the command will be sent to all displays in the same display group.</li> </ul>
--	---

## Control panel

 Information	Shows information, current status and settings of the display or display group selected on the Monitor list panel. See <a href="#">Information tab on page 39</a> for details.
 Control	Provides controls for display's power, volume, and other settings. See <a href="#">Control tab on page 41</a> for details.
 AV	Provides controls for display's audio and video settings. See <a href="#">AV tab on page 42</a> for details.
 Schedule	Allows you to set different scheduled time intervals to automatically turn on/off the display. See <a href="#">Schedule tab on page 43</a> for details.

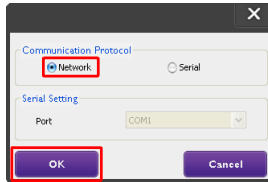
## Managing displays

### Searching for displays

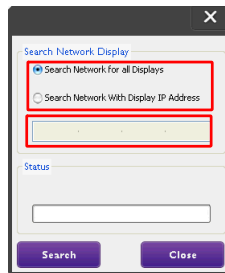
After you finish connecting display(s) to the computer, what you need to do next is to let the Multi-Display Administrator search for the displays and add them to the Monitor list panel.

#### Ethernet (LAN) connection

1. Click **Search** on the Toolbar. A dialog will appear asking you to specify the Communication Protocol.



2. Select **Network**, and click **OK**. The dialog below will follow.





3. Click to select a suitable option:
  - If you want the Multi-Display Administrator to search for all displays on the same network, select **Search Network for all Displays**.
  - If you only want to search for a display with a specific IP address, click **Search Network With Display IP Address**, and then enter the IP address of the display.
4. Click **Search**. The Multi-Display Administrator will start searching for displays on the network, and the progress will be indicated in the **Status** area.
5. Click **Close** when the search is complete. The display(s) found will be listed on the Monitor list panel.

### Managing displays on the Monitor list panel

After displays are searched and added to the Monitor list panel, you can perform various operations to manage the displays.



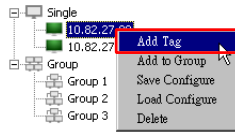
The connection status of displays on the Monitor list panel is indicated by the icons below:

- : the display is connected (online)
- : the display is not connected (offline). You can click **Re-connection** on the Tool bar to re-connect to the display.

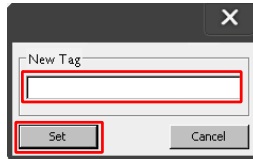
## Tagging a display

If displays are connected to the computer via Ethernet connection, they are named after their IP addresses on the Monitor list panel by default. You can give these displays different names (tags) for easier identification.

1. On the Monitor list panel, right-click on the display you want to add a tag, and select **Add Tag**.



2. Enter the tag name in the dialog that follows, and click **OK**.



3. The tag you just added will appear in parentheses in front of the display's IP address.

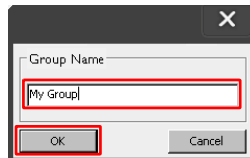
## Creating a group

You can create display groups for management purposes. For example, if you select a group and change settings on the Control panel, the command will be sent to all displays in the same group.

1. On the Monitor list panel, right-click on the **Group** node, and select **Make Group**.



2. Enter the group name in the dialog that follows, and click **OK**.

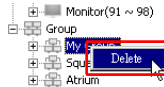


3. A new group will be created under the **Group** node.



## Deleting a group

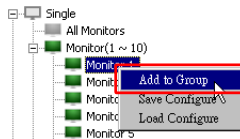
1. On the Monitor list panel, right-click on the display group you want to delete, and select **Delete**.



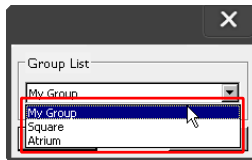
2. The selected group will be deleted.

## Adding displays to an existing group

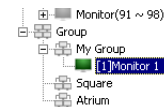
1. On the Monitor list panel, right-click on a display you want to add to a display group and select **Add to Group**.



2. In the dialog that appears, select the group to which the display will be added, and then click **Select**.



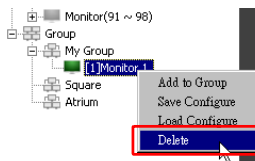
3. The display will be added to the group you selected.



You can also drag a display and drop it to a group.

## Deleting a display from a group

1. On the Monitor list panel, right-click on a display you want to delete from a display group and select **Delete**.



2. The selected display will be deleted from the group.

## Deleting a display from the Monitor list panel

1. On the Monitor list panel, right-click on the display you want to delete under the **Single** node and select **Delete**.



2. The selected display will be deleted.



If a display is deleted under the **Single** node, it will also be deleted from the group to which it belongs.

## Setting display ID automatically

If displays are connected to the computer via Ethernet connection, you can use this function to set IDs for the displays automatically.

1. On the Monitor list panel, right-click on the **Single** node and select **Auto Set ID**.

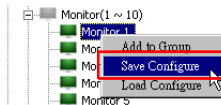


2. The IDs of the displays will be assigned automatically.

## Saving and loading display configuration files

With this function, you can save display settings on the Control panel as a configuration file (\*.ini file) for backup purpose, and load the file when you want to restore these settings.

1. On the Monitor list panel, right-click on a display and select **Save Configure**.



2. Specify the location where the file will be saved, and then click **Save**.

To load a configuration file, right-click on a display on the Monitor list panel and select **Load Configure**.

## Setting up display configurations

You can use the settings and options on the Control panel to remotely set up various settings for a selected display or display group on the Monitor list panel.



Some controls and settings on the Control panel may not be available depending on your display model. A warning message will appear in the Notification area on the lower left corner of the program window if an unsupported control or setting is selected.

### Information tab

The following information will be provided on the Information tab when a display is selected on the Monitor list panel.

Information		Control	AV	Schedule	DisplayWall	Alarm
<b>Display</b>						
Model Name :	PL4264					
Serial Number :	11266YWWXXXXXX					
Monitor SW Version :	1.02					
<b>IP Configuration Remote Control</b>						
<input checked="" type="radio"/> DHCP <input type="radio"/> Static						
MAC Address	08:18:CE:CA:23:07					
IP Address	10 . 62 . 27 . 115					
Subnet Mask	255 . 255 . 255 . 0					
Default Gateway	10 . 62 . 27 . 254					
<b>Status</b>						
Power :	On					
Video Source :	AV					
Signal Status :	Unstable					
Volume Mute :	Off					
Picture Mode :	N/A					
Aspect :	N/A					
Ambient Light Sensor :	Off					
<b>Diagnosis</b>						
Power :	On					
Operation Hours :	407					
Temperature (inside) :	33 °C 91.4 °F					

Item	Description	
Display	Model name	Model name of the display.
	Serial number	Serial number of the display.
	Monitor SW version	Software (firmware) version of the display.
IP Configuration Remote Control	DHCP/Static	IP assignment method of current Ethernet connection.
	MAC Address	Network properties of current Ethernet connection.
	IP Address	
	Subnet Mask	
	Default Gateway	
Status	Power	Current power on/off status of the display.
	Video Source	Video input source being used by the display.
	Signal Status	Current input signal strength of the display.
	Volume Mute	Audio mute on/off status of the display.
	Picture Mode	Current picture mode setting of the display.
	Aspect	Current aspect ratio setting of the display.



Diagnosis	Power	The diagnosis result for the display's power status.
	Operation Hours	The display's total elapsed power on time.

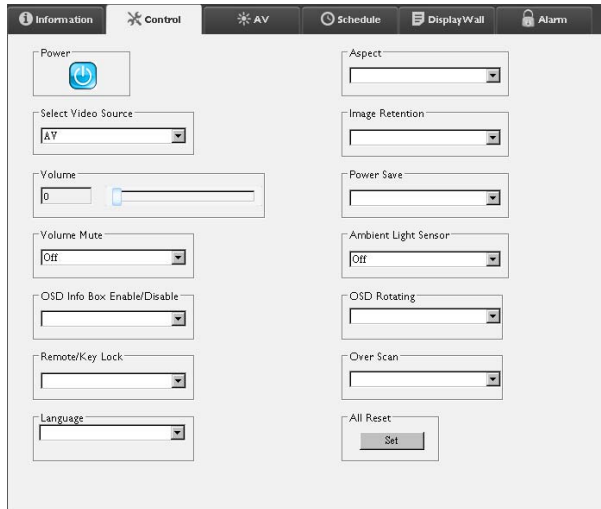
The following information of each display will be provided on the Information tab when a display group is selected on the Monitor list panel.

Status	IP Address	Tag	Power	Input	Temp
On-Line	10.82.27.80	----	On	VGA	32 degrees[C]
On-Line	10.82.27.58	----	On	VGA	36 degrees[C]

Item	Description
Status	The network connection status of each display.
IP Address (Ethernet connection)	The IP address of each display.
Tag	The tag (name) given to each display.
Power	The power on/off status of each display.
Input	The input source current being used by each display.

## Control tab

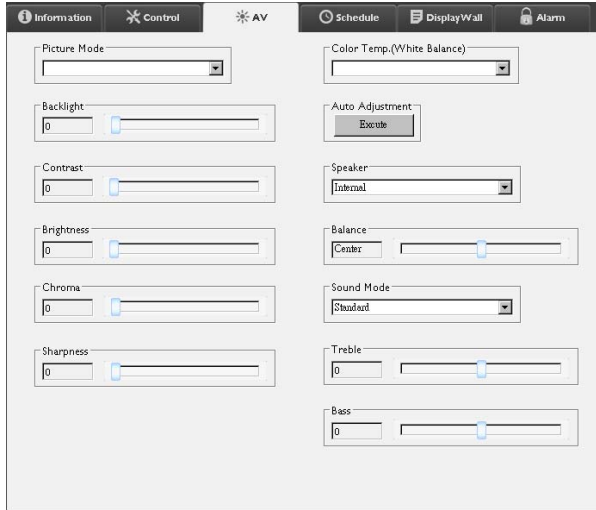
The Control tab consists of controls for basic display operations.



Item	Description
Power	Turns on the power of the display or puts the display to standby mode.
Select Video Source	Selects a video input source.
Volume	Adjusts audio volume.
Volume Mute	Mutes or unmutes audio output.
Remote/Key Lock	Turns on or off the remote control lock and key lock functions.
Language	Changes the language of the OSD menu.
Aspect	Selects an image aspect ratio for the display.
Image Retention	Turns on or off the image retention prevention function.
All Reset	Resets all settings on the Control tab.

## AV tab

The AV tab contains controls for picture quality and sound settings.



Item	Description
Picture Mode	Selects a preset picture mode.
Backlight	Adjusts the backlight intensity of the screen.
Contrast	Adjusts the image contrast.
Brightness	Adjusts the image brightness.
Chroma	Adjusts the color intensity of the image.
Sharpness	Adjusts the image sharpness.
Color Temp. (White Balance)	Adjusts the color temperature.
Auto Adjustment	Click the <b>Execute</b> button to trigger the auto adjustment function for VGA signal.
Balance	Adjusts the balance of volume between the left and right speakers.
Sound Mode	Selects a preset sound mode for audio output.
Treble	Adjusts the audio treble.
Bass	Adjusts the audio bass.

## Schedule tab

The Schedule tab provides controls by which you can set the display(s) to turn on or off (enter standby mode) automatically.

**Information** **Control** **AV** **Schedule** **DisplayWall** **Alarm**

**Clock**  
 Year: 2013 | Month: Aug | Day: 2 | HR: 10 | MIN: 10 | PM  
 [Set] [Set by PC Time]

**Time Schedule Setting**  
 Repeat:  Every Day  Mon.  Tue.  Wed.  Thu.  Fri.  Sat.  Sun.  
 HR: 7 | MIN: 0 | AM  
 Select Video Source: Default  
 On Time  
 Off Time | 13 | 0 | PM  
 No.: 7 [Set]

**On/Off Time Schedule Info**

No.	Repeat	On Time	Input	Off Time	Status
[1]	Mon.	03:00	Default	14:00	Enable
[2]	Mon.	03:00	Default	13:00	Enable
[3]	Mon.	05:00	Default	15:00	Enable
[4]	Mon.	03:00	Default	13:00	Enable
[5]	Mon.	06:00	Default	13:00	Enable
[6]	Mon.	08:00	Default	12:00	Enable
[7]	Mon.	07:00	Default	13:00	Enable

[Enable/Disable] [Delete] [Delete All]

Item	Description
Clock	Allows you to set up current time manually. You can also click <b>Set by PC Time</b> to set the display to use the current time on the computer.
Time Schedule Setting	<p>Allows you to specify on and off time schedules.</p> <ol style="list-style-type: none"> <li>Set a repeat mode by checking a <b>Repeat</b> checkbox. (<b>Every Day, Mon., Tue. ...</b>, etc.)</li> <li>Set <b>On Time</b> (the time when the display will be turned on) and <b>Off Time</b> (the time when the display will be turned off).</li> <li>Select an input source that will be used when the display is turned on from the <b>Select Video Source</b> drop-down list.</li> <li>Specify the number of the schedule in the <b>No.</b> drop-down list.</li> <li>Click the <b>Set</b> button to complete schedule settings. The on/off time schedule will appear in the <b>On/Off Time Schedule Info</b> area below.</li> </ol>
On/Off Time Schedule Info	<p>Allows you to check and delete on/off time schedules.</p> <ul style="list-style-type: none"> <li>To enable or disable a time schedule, select a schedule and then click <b>Enable/Disable</b>.</li> <li>To delete a time schedule, select a schedule you want to delete, and then click <b>Delete</b>.</li> <li>To delete all time schedules, click <b>Delete All</b>.</li> </ul>

## Additional operations

### Changing login ID and password

You can change the ID and password that are used to log in to the Multi-Display Administrator.



The ID and password can be changed, however, you cannot create multiple ID and password combinations.

1. Click **Security** on the Toolbar. The following dialog will appear.

2. Enter current ID and password in the **ID** and **Password** fields, and then click **Confirm**. If the ID and password are verified successfully, you can continue to the next step.
3. Enter the new ID and password in the **ID**, **Password** and **Verify** fields below, and then click **Change**.

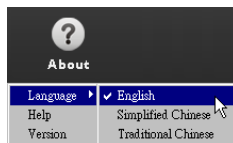


The ID and password are case-sensitive. You can use alphanumeric and special characters such as !, @, #, \$, %, &, \*, -, \_, =, +, ? for the ID and password.

### Changing language

You can change the user interface language of the Multi-Display Administrator whenever necessary.

To change language, click **About** on the Toolbar and select a preferred language.



## Troubleshooting

If you encounter problems while using the Multi-Display Administrator, please refer to the following troubleshooting tips to try to solve the problems by yourself. If the problem persists, please contact BenQ Customer Support for help.

Problem	Solution
Cannot connect to the display(s)	<p>Check the following:</p> <ul style="list-style-type: none"><li>• Check the cable connection. Is the display correctly connected to the computer?</li><li>• Is the display turned on?</li><li>• Is the display's network setting correct?</li></ul>



The lightning flash with arrowhead symbol, within an equilateral triangle, is intended to alert the user to the presence of uninsulated "dangerous voltage" within the product's enclosure that may be of sufficient magnitude to constitute a risk of electric shock to persons.



The exclamation point within an equilateral triangle is intended to alert the user to the presence of important operating and maintenance (servicing) instructions in the literature accompanying the appliance.

## THIS EQUIPMENT MUST BE GROUNDED

To ensure safe operation, the three-pin plug must be inserted only into a standard three-pin power outlet which is effectively grounded through normal household wiring. Extension cords used with the equipment must have three cores and be correctly wired to provide connection to the ground. Wrongly wired extension cords are a major cause of fatalities.

The fact that the equipment operates satisfactorily does not imply that the power outlet is grounded or that the installation is completely safe. For your safety, if you are in any doubt about the effective grounding of the power outlet, please consult a qualified electrician.

- The mains plug of the power supply cord shall remain readily operable. The AC receptacle (mains socket outlet) shall be installed near the equipment and shall be easily accessible. To completely disconnect this equipment from the AC mains, disconnect the power cord plug from the AC receptacle.
- Do not place this display on an uneven, sloping or unstable surface (such as a trolley) where it may fall and cause damage to itself or others.
- Do not place this display near water, like a spa or pool, or in a position which will allow the splashing or spraying of water onto the display, like in front of an open window where rain water may enter.
- Do not install this display in a confined space without proper ventilation and air circulation, such as in a closed cabinet. Allow proper space around the display for dissipating heat inside. Do not block any openings and vents on the display. Overheating may result in hazards and electric shock.
- Installation of this display should only be performed by a qualified technician. Failure to install this display properly may cause injuries and damages to the personnels and the display itself. Check the installation regularly and maintain the display periodically to ensure the best working condition.
- Use only the accessories approved or recommended by the manufacturer to mount this display. Using wrong or unsuitable accessories may cause the display to fall and result in serious personal injuries. Make sure that the surface and fixing points are strong enough to sustain the weight of the display.
- To reduce the risk of electric shock, do not remove covers. No user serviceable parts inside. Refer servicing to qualified service personnel.
- To prevent personal injuries, mounting the display or installing desktop stands is required before use.

# 安全警告和预防措施

简体中文



在等边三角形内的带箭头的闪电符号旨在警告用户在产品外壳内有非绝缘的“危险电压”存在，该类危险电压足以给人带来触电的风险。



在等边三角形内的惊叹号旨在警告用户查看随机所附的重要操作和维护（维修）指示文字。

此设备必须接地

为确保安全操作，三脚插头只能插入使用常规家庭布线而有效接地的标准三脚电源插座。设备所使用的延长线必须有三股并应正确接地。连接错误的延长线是死机的主要原因。

尽管设备运行顺利，但并不表示电源插座已正确接地或安装完全安全。为了您的安全，如果您对于电源插座的有效接地有任何疑问，请咨询合格电工。

- 电源线的电源插头应该保持随时可使用。交流插座（电源插座）应安装在设备附近且方便使用。要完全将设备与交流电源断开，请从交流插座上拔下电源插头。
- 勿将显示器置于不平、倾斜或不稳的表面（如推车）上，因为这可能导致其跌落并损伤机身或其他物品。
- 勿将显示器置于水源附近，如浴场或泳池，或置于可能让水飞溅或喷洒到显示器上的地方，如打开的窗户前面，此处雨水可能溅入。
- 勿将显示器安装在没有适当通风和空气流动的密闭空间，如密封的柜子内。显示器周围要有适当的空间以供其内部散热。勿阻塞显示器上的任何开口和通风口。过热可能导致危险和电击。
- 显示器安装只应由合格电工进行。显示器安装不正确可能导致人身及显示器本身的损伤和损坏。定期检查并维护显示器，确保其最佳工作状态。
- 仅使用许可的或制造商推荐的配件固定显示器。使用错误的或不合适的配件可能导致显示器跌落，造成严重的人身伤害。请确保表面和固定点足够坚固，可以支撑显示器的重量。
- 要减少电击风险，请勿移开机盖。机内没有用户可维修部件。维修服务应由专业维修人士提供。
- 为防止人身伤害，使用前请固定显示器或安装底座。
- 本机使用后的废弃电池需得到正确处置和回收。
- 请勿让小孩接触电池，勿将电池投入水中，以免发生危险。



# 安全警告與注意事項

繁體中文



等邊三角形圖示當中的閃電箭頭符號，意在警告使用者產品機殼內部會產生非絕緣的「危險電壓」，且強度足以導致人員觸電的風險。



等邊三角形圖示當中的驚嘆號，意在警告使用者該裝置附有重要的操作與維護（維修）文字說明。

本產品必須接地

為確保操作安全，您必須僅將 3 針腳插頭插入至標準 3 針腳電源插座，以透過標準家庭電路將產品有效接地。產品必須使用三芯延長線並正確連接電源，以將產品電源接地。電源延長線連接錯誤是造成致命危險的一大主因。

產品正常運作並不表示電源插座已接地，或是安裝過程一切安全無虞。為了安全起見，若您對於是否有效將電源插座接地有任何疑慮，請洽詢合格的電工技師。

- 電源供應器主插頭應隨時保持容易操作的狀態。AC 電源插座（主插座）應安裝於設備附近，以便使用。若要從 AC 主插座完全拔下此設備的電源線，請從 AC 電源插座拔下電源線插頭。
- 請勿將此顯示器置於不平坦、傾斜或不穩定的表面（例如手推車），因為這可能導致傾倒，或是造成自己與他人受傷。
- 請勿將此顯示器置於靠近水域之處（例如 SPA 或水池），或是置於會將水潑灑或噴濺到顯示器的位置（例如將顯示器放在開著窗戶且會飄進雨水之處）。
- 請勿在缺乏良好散熱或空氣循環的密閉空間中安裝此顯示器，例如緊閉的櫃子中。為了便於內部散熱，請在顯示器四周預留適當空間。請勿擋住顯示器上的任何開口或通風口。顯示器過熱可能導致發生危險和觸電。
- 僅應由合格技師負責安裝本顯示器。若未正確安裝本顯示器，則可能導致人員與顯示器本身發生傷害或損害。請定期檢查安裝作業並執行維護，以確保最佳運作狀態。
- 僅使用經廠商核可或建議的配件來安裝本顯示器。使用不當或不適合的配件，可能會導致顯示器摔落而造成嚴重的人員傷害。確定安裝表面與固定點的強度足以支撐顯示器重量。
- 為了減少觸電的危險，請勿移除產品外殼。使用者不得自行維修內部零件。請由合格的服務人員負責維修工作。
- 為了避免造成人身傷害，使用前請先固定顯示器或安裝桌面支架。
- 使用過度恐傷害視力。
- 使用 30 分鐘請休息 10 分鐘。
- 2 歲以下幼兒不看螢幕，2 歲以上每天看螢幕不要超過 1 小時。

# Avertissements et précautions de sécurité



L'éclair fléché dans un triangle équilatéral, est destiné à alerter l'utilisateur de la présence de « tension dangereuse » non isolée dans le boîtier du produit pouvant être d'une ampleur suffisante pour constituer un risque d'électrocution pour les personnes.



Le point d'exclamation dans un triangle équilatéral est destiné à alerter l'utilisateur de la présence d'instructions importantes d'utilisation et de maintenance (entretien) dans la documentation accompagnant l'appareil.

## CET ÉQUIPEMENT DOIT ÊTRE MIS À LA TERRE

Pour assurer une utilisation en toute sécurité, la prise à trois broches ne doit être insérée que dans une prise secteur standard correspondante qui est effectivement mise à la terre via le câblage domestique normal. Les rallonges utilisées avec l'équipement doivent avoir trois fils et être correctement câblées pour offrir une connexion à la terre. Des rallonges mal câblées sont une cause majeure de décès.

Le fait que l'équipement fonctionne correctement ne signifie pas que la prise d'alimentation est mise à la terre ou que l'installation est complètement sûre. Pour votre sécurité, si vous avez le moindre doute au sujet de la mise à la terre effective de la prise secteur, veuillez consulter un électricien qualifié.

- La prise du cordon d'alimentation doit rester facilement accessible. La prise secteur (prise murale) doit être installée à proximité de l'équipement et doit être accessible facilement. Pour déconnecter totalement cet appareil du secteur, déconnectez le cordon d'alimentation de la prise secteur.
- Ne placez pas cet écran sur une surface inclinée ou instable (comme un chariot) où il pourrait tomber et être endommagé ou blesser quelqu'un.
- Ne placez pas cet écran à proximité d'eau comme un spa ou une piscine ou dans une position qui permettrait des éclaboussures ou des pulvérisations d'eau sur l'affichage, comme devant une fenêtre ouverte par laquelle la pluie pourrait rentrer.
- N'installez pas cet écran dans un espace confiné sans une ventilation et une circulation d'air adéquates, comme dans une armoire fermée. Laissez un espace adéquat autour de l'écran pour dissiper la chaleur à l'intérieur. Ne bloquez aucune des fentes de ventilations et ouvertures sur l'écran. Une surchauffe peut entraîner des dangers et des chocs électriques.
- L'installation de cet écran ne doit être effectuée par un technicien qualifié. Ne pas installer cet écran correctement peut causer des blessures et des dommages au personnel et l'écran lui-même. Vérifiez régulièrement l'installation et entretenez l'écran régulièrement pour assurer les meilleures conditions de travail.
- Utilisez uniquement les accessoires agréés ou recommandés par le fabricant pour monter cet écran. Utiliser des accessoires erronés ou inadaptés peut provoquer la chute de l'écran et entraîner des blessures graves. Assurez-vous que la surface et les points de fixation sont suffisamment solides pour supporter le poids de l'écran.
- Pour réduire le risque d'électrocution, ne retirez pas les panneaux. Aucun composant susceptible d'être manipulé par l'utilisateur. Confiez les opérations d'entretien et de réparation à un technicien qualifié.
- Pour éviter les blessures, monter l'affichage ou installer les pieds de bureau est nécessaire avant l'utilisation.



El símbolo de relámpago con punta de flecha, dentro de un triángulo equilátero, pretende alertar al usuario de la presencia de "tensión peligrosa" no aislada en el habitáculo del producto, pudiendo ser de una magnitud tal que constituya un riesgo de descarga eléctrica para las personas.



El signo de exclamación, dentro de un triángulo equilátero, pretende alertar al usuario de la presencia de instrucciones operativas y de mantenimiento (servicio) importantes en la documentación que acompaña al producto.

## ESTE EQUIPO DEBE DISPONER DE TOMA A TIERRA

A fin de garantizar un uso seguro, el enchufe de tres patillas se debe insertar únicamente en una toma de corriente estándar de tres patillas que esté debidamente puesta a tierra a través del cableado normal doméstico. Los alargadores utilizados con el equipo deben disponer de tres núcleos y conectarse correctamente para ofrecer una puesta a tierra adecuada. Los alargadores conectados incorrectamente pueden desencadenar problemas serios.

El hecho de que el equipo funcione correctamente no implica que la toma de corriente esté puesta a tierra ni que la instalación sea completamente segura. Por su seguridad, si tiene alguna duda sobre la idoneidad de la puesta a tierra de la toma de corriente, consulte a un electricista cualificado.

- El enchufe de corriente del cable de alimentación permanecerá activo. El receptáculo de CA (enchufe de conexión a la red) debe instalarse cerca del equipo y en un lugar al que se pueda acceder con facilidad. Para desconectar completamente este equipo de la red de CA, desconecte el enchufe del cable de alimentación del receptáculo de CA.
- No coloque esta pantalla sobre una superficie irregular, inclinada o inestable (como un carrito) ya que se puede caer y dañar o causar lesiones a las personas.
- No coloque la pantalla cerca del agua, como en una piscina o similares, y evite colocarla en lugares donde se exponga indirectamente al agua, como en frente de una ventana abierta en un día de lluvia.
- No coloque la pantalla en un espacio reducido, sin circulación de aire o ventilación adecuada, como en un armario cerrado. Deje suficiente espacio alrededor de la pantalla para que desprenda el calor acumulado. No bloquee ninguna de las salidas de ventilación de la pantalla. El sobrecalentamiento puede conllevar a daños y descarga eléctrica.
- La instalación de esta pantalla debe ser realizada por un técnico cualificado. La instalación incorrecta de esta pantalla puede conllevar a lesiones y daños materiales, así como daños en la propia pantalla. Revise la instalación con frecuencia y realice tareas de mantenimiento periódicas para garantizar unas condiciones de trabajo óptimas.
- Utilice únicamente los accesorios aprobados o recomendados por el fabricante para montar esta pantalla. El uso de accesorios incorrectos o no adecuados puede conllevar al fallo de la pantalla y resultar en daños personales serios. Asegúrese de que la superficie y los puntos de fijación son lo suficientemente fuertes y estables para soportar el peso de la pantalla.
- A fin de reducir el riesgo de descarga eléctrica, no retire las cubiertas. En el interior no hay piezas que necesiten mantenimiento por parte del usuario. Diríjase a personal de servicio cualificado para el mantenimiento.
- Para prevenir daños personales, antes del uso se requiere montar la pantalla o instalar pies de apoyo de escritorio.



O relâmpago com a seta dentro de um triângulo equilátero destina-se a alertar o utilizador para a presença de “tensão perigosa” dentro do invólucro do produto, tensão essa que pode ter amplitude suficiente para constituir um risco de choque eléctrico para as pessoas.



O ponto de exclamação dentro de um triângulo equilátero destina-se a alertar o utilizador para a presença de instruções importantes de funcionamento e manutenção (assistência técnica) na documentação que acompanha o aparelho.

## ESTE EQUIPAMENTO DEVE SER LIGADO À TERRA

Para garantir um funcionamento seguro, a ficha de três pinos deverá ser inserida numa tomada de corrente de três pinos, padrão, correctamente ligada à terra através da rede eléctrica doméstica normal. As extensões usadas com este equipamento deverão possuir três núcleos e cablagem correcta para ligação à terra. Cabos de extensão com cablagem incorrecta são os maiores causadores de acidentes fatais.

O funcionamento satisfatório do equipamento não significa que a tomada de corrente seja de terra, ou que a instalação seja completamente segura. Para sua segurança, se possuir quaisquer dúvidas sobre a eficácia da ligação à terra da tomada de corrente, consulte um electricista qualificado.

- A ficha do cabo de alimentação deverá permanecer pronta a funcionar. O receptáculo AC (tomada externa) deve estar instalado perto do equipamento e ser facilmente accedido. Para desligar completamente a alimentação AC, desligue o cabo de alimentação do receptáculo AC.
- Não coloque o ecrã numa superfície desnivelada, inclinada ou instável (como um carrinho) de onde possa cair e causar danos no equipamento ou ferimentos pessoais.
- Não coloque o ecrã junto a locais com água, como um spa ou piscina ou numa posição que permita a pulverização de água para o ecrã, como por exemplo perto de uma janela aberta por onde a água da chuva possa entrar.
- Não instale o ecrã num espaço fechado sem ventilação e circulação de ar adequadas, como por exemplo, num armário fechado. Deixe espaço livre adequado em redor do ecrã para permitir a dissipação do calor no interior. Não bloqueie orifícios e ventilações do ecrã. O sobreaquecimento poderá resultar em perigos e choque eléctrico.
- A instalação deste ecrã deverá ser executada apenas por um técnico qualificado. Uma instalação incorrecta deste ecrã poderá causar ferimentos e danos a pessoas e ao próprio equipamento. Verifique a instalação regularmente e leve a cabo uma manutenção periódica para garantir as melhores condições de funcionamento.
- Use apenas acessórios aprovados ou recomendados pelo fabricante para instalar o ecrã. Usar acessórios errados ou inadequados poderá fazer com que o ecrã caia, resultando em lesões pessoais graves. Assegure-se de que a superfície e os pontos de fixação são suficientemente robustos para suportar o peso do ecrã.
- Para reduzir o risco de choque eléctrico, não remova as tampas. Não existem peças que o utilizador possa manter ou reparar no interior. A manutenção e reparação deverão ser efectuadas por pessoal qualificado.
- Para prevenir ferimentos pessoais, montar o ecrã ou os suportes para secretária antes de utilizar.