



QPro

VGA Wireless Dongle

Quick Start Guide

Copyright

© 2014 BenQ Corporation. All rights reserved. No part of this publication may be reproduced, transmitted, transcribed, stored in a retrieval system or translated into any language or computer language, in any form or by any means, electronic, mechanical, magnetic, optical, chemical, manual or otherwise, without the prior written permission of BenQ Corporation.

All other logos, products, or company names mentioned in this document may be the registered trademarks or copyrights of their respective companies, and are used for informational purposes only.

Disclaimer

BenQ Corporation makes no representations or warranties, either expressed or implied, with respect to the contents hereof and specifically disclaims any warranties, merchantability or fitness for any particular purpose. Further, BenQ Corporation reserves the right to revise this publication and to make changes from time to time in the contents hereof without obligation of BenQ Corporation to notify any person of such revision or changes.

Screen images and icons in this manual are simulated for illustrative purposes only. Actual displays may vary.

BenQ is not responsible for the content of the websites or of similar resources, which are maintained and controlled by third parties, that may be linked from this product. Providing links to those websites or to similar resources does not mean that BenQ makes any warranty or representation to their content by expression or by implication.

Any third party content or service preinstalled in this product is provided "as is". BenQ does not, by expression or by implication, make any warrant to the content or to the services provided by third parties. BenQ does not warrant or guarantee that the content or services provided by third parties are accurate, effective, most up-to-date, legal, or complete. Under no circumstances shall BenQ be liable for the content or services provided by third parties including their negligence.

Services provided by third parties may be terminated temporarily or permanently. BenQ does not warrant or guarantee that any content or services provided by third parties are in good condition at any time, and is not liable for the termination of the said content and services.

In addition, BenQ is not involved in any transactions you conduct in the websites or similar resources maintained by third parties.

You should contact the content or service providers for any questions, concerns, or disputes.

Table of Contents

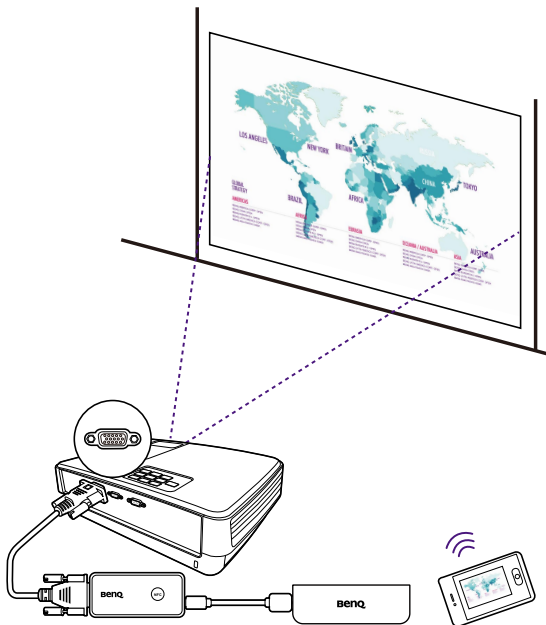
Copyright.....	i
Disclaimer.....	i
Introduction.....	1
Package contents.....	2
Product overview.....	2
Charging the power bank.....	2
Connecting the QPro dongle.....	3
Installing the QPresenter Pro app and connecting to the dongle.....	4
Installing QPresenter Pro on a NFC-enabled device.....	4
Installing QPresenter Pro via QR code.....	5
Working with BenQ QPresenter Pro app.....	5
Supported file formats.....	5
Regulatory Statement.....	6

Introduction

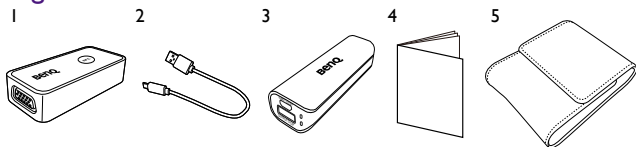
Thank you for choosing BenQ VGA wireless dongle - **QPro**, which works with the **BenQ QPresenter Pro** app (installed on your mobile device) and enhances wireless presentation. The dongle can be connected to any display such as projector, LCD monitor, or TV, as long as supported I/O ports are available. In this document, connection with a projector is used as an example. The installation and operation may vary by the connected devices.

To make a wireless presentation, you need to take a few steps to complete the wireless connection. Follow the instructions in this document.

1. Charge the power bank.
2. Connect the dongle.
3. Install the **QPresenter Pro** software on your device and establish a wireless connection.
4. Locate the file(s) for sharing.



Package contents



1. **QPro** dongle x 1

3. Power bank x 1

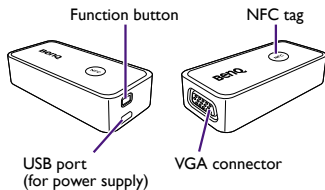
5. Traveling case x 1

2. USB cable x 1

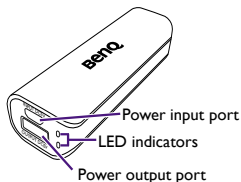
4. Quick start guide x 1

Product overview

Dongle



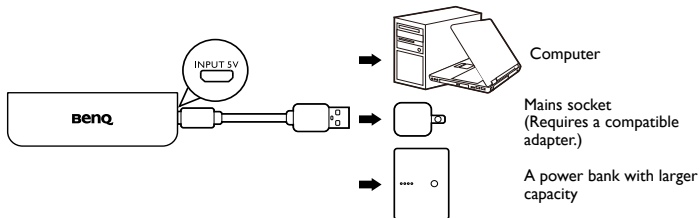
Power bank



Charging the power bank

You must fully charge the power bank before using it for the first time.

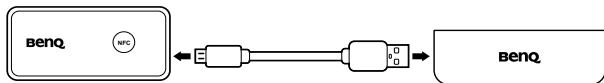
1. Connect the Micro-USB connector of the provided USB cable to the power input port of the power bank.
2. Connect the other end of the USB cable to an appropriate power outlet.



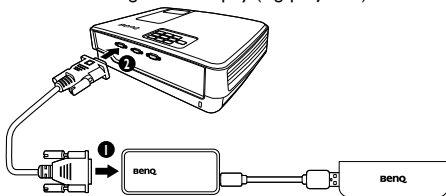
3. When the charging starts, the LED indicator lights up in solid red. Once the power bank is fully charged, the LED indicator will be off.

Connecting the QPro dongle

1. Connect the dongle to the supplied power bank using the USB cable. The LED indicator lights up in solid blue.



2. Connect a VGA cable to the dongle and a display (e.g. projector). And turn on the projector.

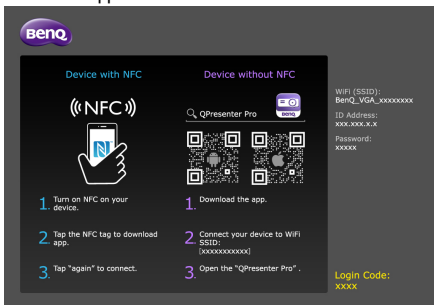


3. The first time you use the dongle, select a language by pressing the function button on the dongle. Keep pressing the function button to move the highlight bar to a desired language, and wait for 10 seconds until the language is selected.

PLEASE SELECT LANGUAGE		
English	한국어	Hrvatski
Français	Svenska	Română
Deutsch	Nederlands	Norsk
Italiano	Türkçe	Dansk
Español	Čeština	Български
Русский	Português	suomi
繁體中文	ไทย	Indonesian
简体中文	Polski	Ελληνικά
日本語	Magyar	العربية
हि न दी		

Installing the QPresenter Pro app and connecting to the dongle

The dongle works with the **QPresenter Pro** app to make wireless presentation easily. Once the dongle is powered on and connected to your projector successfully, you are prompted to install **QPresenter Pro** and establish wireless connection before your first presentation. You can install the app via NFC function or QR code. Alternatively, search for **QPresenter Pro** manually from the online app store for installation.

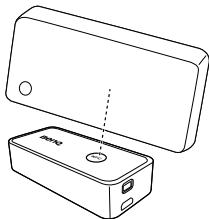


Depending on your device's operating system, different installation procedures and setup are required. Read this document and on-screen instructions (if provided) carefully.

Installing QPresenter Pro on a NFC-enabled device

NFC function is only available and supported for Android 4.0 / 4.2 / 4.3 / 4.4.2.

1. Make sure your device is connected to the Internet and is NFC-enabled.
2. Tap your device to the NFC tag on the dongle to install the **QPresenter Pro** app from **Google Play**.
3. Tap your device to the NFC tag again establish the wireless connection automatically between your device and the dongle.



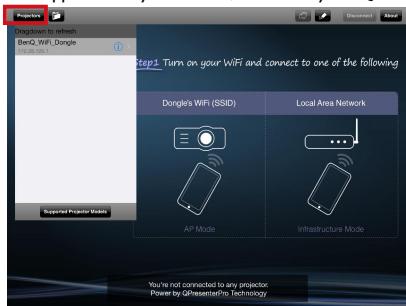
Installing QPresenter Pro via QR code

1. Make sure your device is connected to the Internet and a QR code scanner app is launched.
2. You are provided with two QR codes on the screen; one is for Android devices and the other is for iOS devices. Aim the camera lens of your device at the appropriate QR code to download and install the **QPresenter Pro** app from the online app store.
3. Go to the Wi-Fi setting of your device, and scan for an SSID named **BenQ_VGAxxxxxx** to make the connection.

Working with BenQ QPresenter Pro app

Once the app has been installed and the wireless connection has been established, you are ready to perform wireless presentation and photo sharing.

1. Launch **QPresenter Pro** on your device.
2. Tap **Projectors** on the upper-left of your screen, and select your **QPro** dongle from the list.



3. You are prompted to enter a login code, which is available on the bottom-right of the projected screen.
4. Locate the file(s) you want to share. Files for sharing could be accessed from certain cloud services or from the local storage space.

Supported file formats

File type	Supported file formats
Document	Adobe® PDF
	Apple® iWork '09, Numbers '09, and Keynote '09
	Microsoft® RTF
	Microsoft® Office®: *.doc, *.docx, *.ppt, *.pptx, *.xls, and *.xlsx
Image	*.png, *.gif, *.tif, and *.tiff (resolution less than 3K*3K or 9 megapixels)
	*.jpeg (resolution less than 6K*6K or 36 megapixels)

Regulatory Statements

Battery caution

- Do not put the power bank in the direct heat, humidity. Avoid fire.
- Do not drop the power bank.
- Do not expose the power bank to water or moisture, this could result in malfunction.

Battery safety notice

Please note the following:

- When the power bank fail to function, replace it immediately.
- Chemicals which leak from the power bank may cause skin irritation. If any chemical matter seeps out of the power bank, wipe it up immediately using a dry cloth, and replace the power bank as soon as possible.
- There may be local restrictions on the disposal or recycling of batteries. Consult your local regulations or waste disposal provider.

FCC statement (for the United States only)

Federal Communication Commission Interference Statement

This equipment has been tested and found to comply with the limits for a Class B digital device, pursuant to Part 15 of the FCC Rules. These limits are designed to provide reasonable protection against harmful interference in a residential installation. This equipment generates, uses and can radiate radio frequency energy and, if not installed and used in accordance with the instructions, may cause harmful interference to radio communications. However, there is no guarantee that interference will not occur in a particular installation. If this equipment does cause harmful interference to radio or television reception, which can be determined by turning the equipment off and on, the user is encouraged to try to correct the interference by one of the following measures:

- Reorient or relocate the receiving antenna.
- Increase the separation between the equipment and receiver.
- Connect the equipment into an outlet on a circuit different from that to which the receiver is connected.
- Consult the dealer or an experienced radio/TV technician for help.

This device complies with Part 15 of the FCC Rules. Operation is subject to the following two conditions: (1) This device may not cause harmful interference, and (2) this device must accept any interference received, including interference that may cause undesired operation.

FCC Caution: Any changes or modifications not expressly approved by the party responsible for compliance could void the user's authority to operate this equipment.

RoHS Statement

This product is compliant to implemented RoHS (Restriction of Hazardous Substances) type regulations worldwide, including but not limited to China, India, Japan, Korea and European Union.

DECLARATION OF CONFORMITY

The device complies with the requirements set out in the Council Directives on the Approximation of the Laws of the Member States relating Electromagnetic Compatibility (2014/30/EU) and Low Voltage Directive (2014/35/EU) and Radio Equipment Directive (2014/53/EU), the Restriction of The Use of Certain Hazardous Substances in Electrical And Electronic Equipment Directive (2011/65/EU), and Turkish EEE Directive.

WEEE

Disposal of Waste Electrical and Electronic Equipment and/or Battery by users in private households in the European Union



WEEE

This symbol on the product or on the packaging indicates that this can not be disposed of as household waste. You must dispose of your waste equipment and/or battery by handling it over to the applicable take-back scheme for the recycling of electrical and electronic equipment and/or battery. For more information about recycling of this equipment and/or battery, please contact your city office, the shop where you purchased the equipment or your household waste disposal service. The recycling of materials will help to conserve natural resources and ensure that it is recycled in a manner that protects human health and environment.



Recycling information: See <http://www.benq.com/support/recycle> for details.

Battery

BenQ.com

© 2014 BenQ Corporation

All rights reserved. Rights of modification reserved.

QM01-Q-v1 2014/12/16