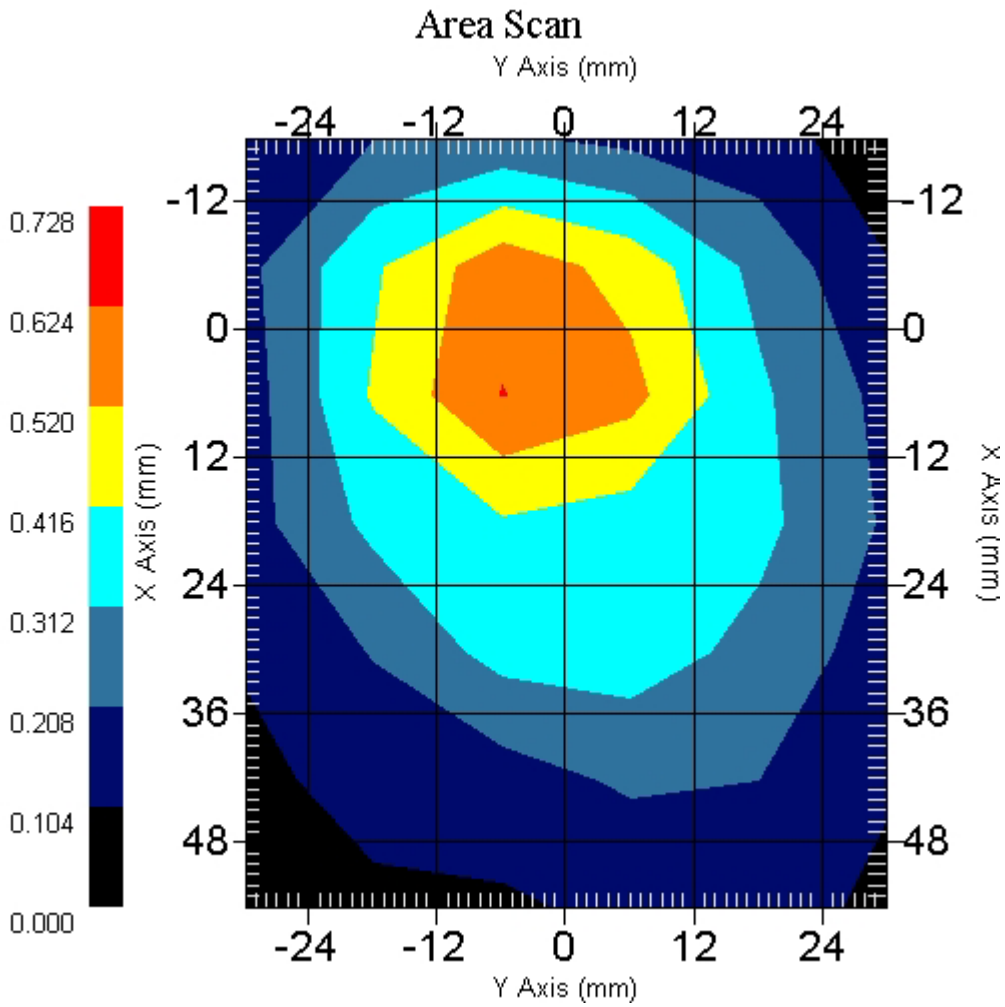


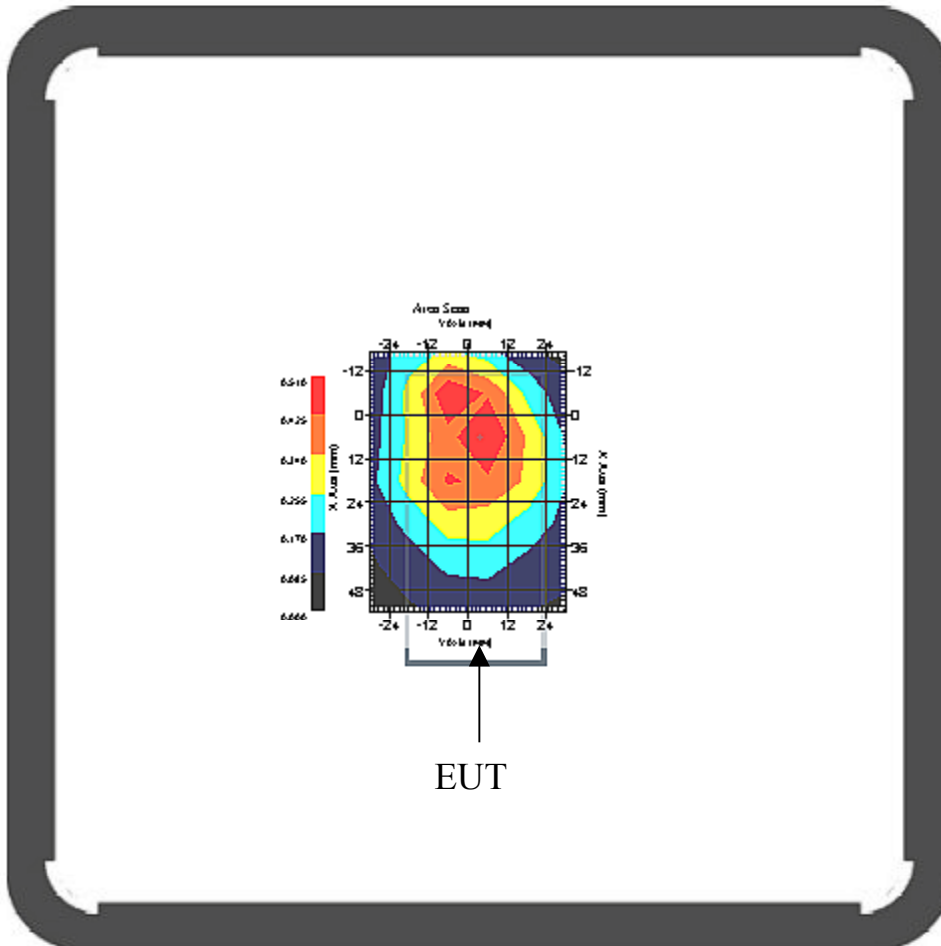
This is previous page plot (zoom in)



Measurement Data

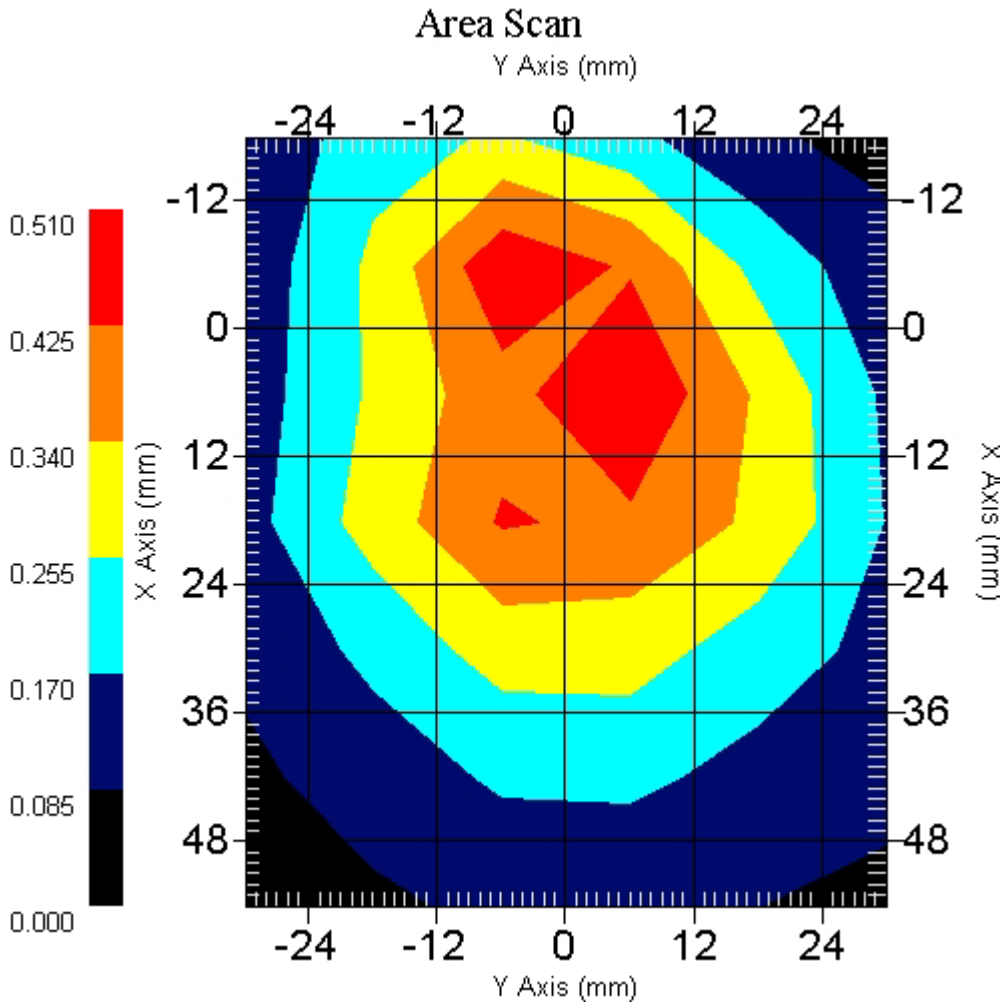
Crest Factor : 8
 Tissue Temp. : 20.80 °C
 Ambient Temp. : 21.20 °C
 Area Scan : 7x6x1 : Measurement x=12mm, y=12mm, z=4mm
 Zoom Scan : 7x7x7 : Measurement x=5mm, y=5mm, z=5mm
 Power Drift-Start : 0.532 W/kg
 Power Drift-Finish: 0.528 W/kg
 Power Drift (%) : -0.656

DUT Position : Touch
 Channel : 251



1 gram SAR value : 0.446 W/kg
 10 gram SAR value : 0.309 W/kg
 Area Scan Peak SAR : 0.507 W/kg
 Zoom Scan Peak SAR : 0.730 W/kg

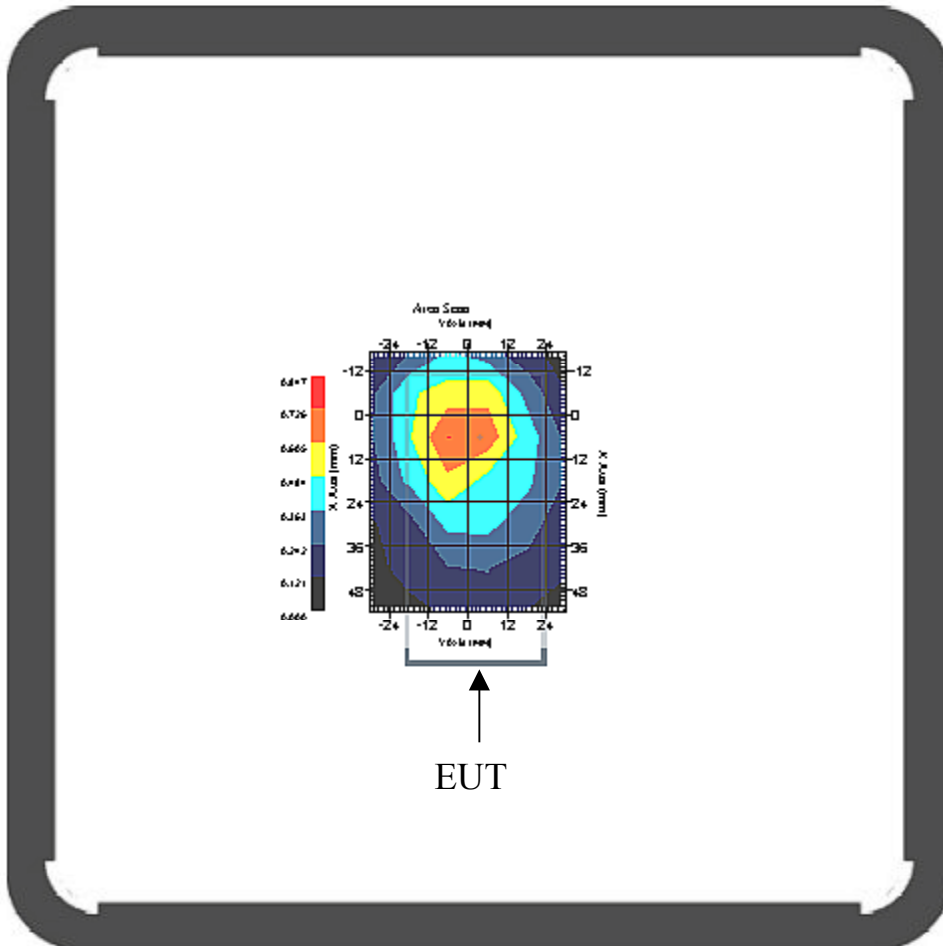
This is previous page plot (zoom in)



Measurement Data

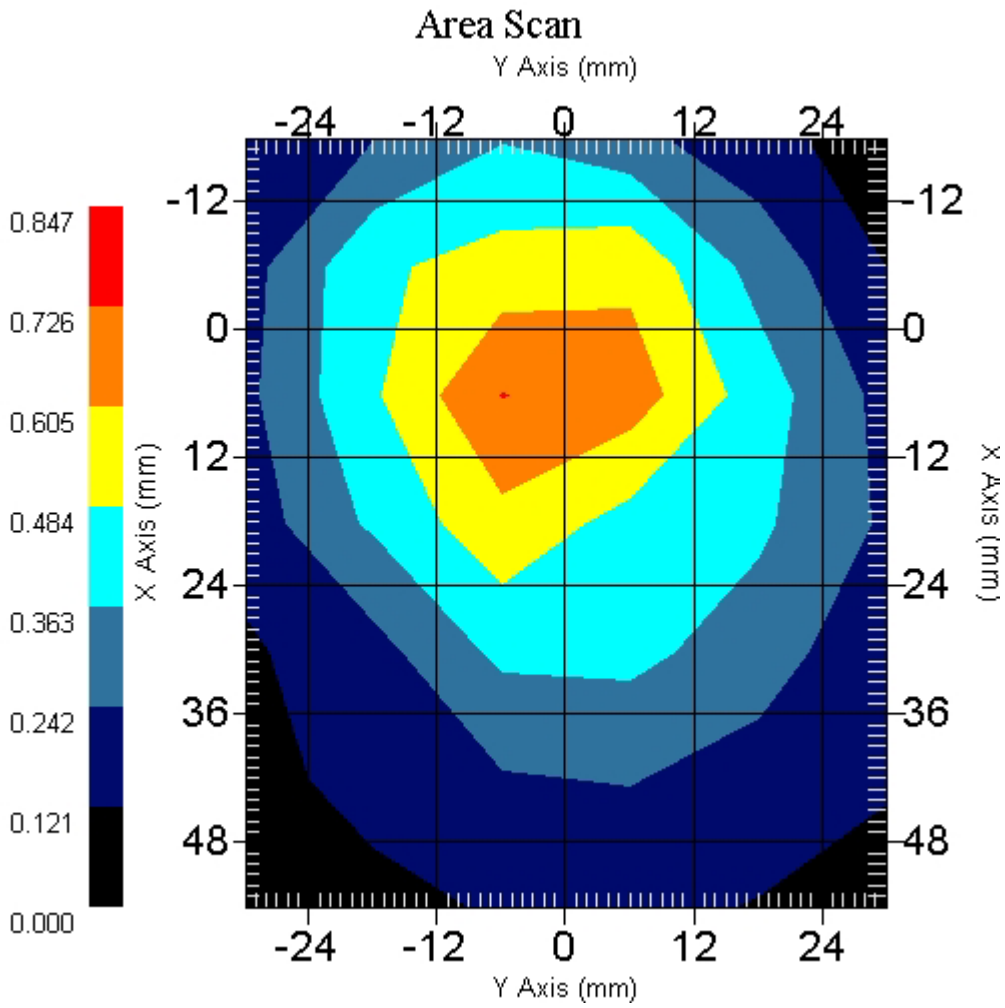
Crest Factor : 8
Tissue Temp. : 20.80 °C
Ambient Temp. : 21.20 °C
Area Scan : 7x6x1 : Measurement x=12mm, y=12mm, z=4mm
Zoom Scan : 7x7x7 : Measurement x=5mm, y=5mm, z=5mm
Power Drift-Start : 0.714 W/kg
Power Drift-Finish: 0.715 W/kg
Power Drift (%) : 0.085

DUT Position : GSM with Bluetooth-Touch
Channel : 128



1 gram SAR value : 0.662 W/kg
10 gram SAR value : 0.401 W/kg
Area Scan Peak SAR : 0.729 W/kg
Zoom Scan Peak SAR : 0.980 W/kg

This is previous page plot (zoom in)



ALSAS-10U VER 2.2.0 APREL Laboratories

SAR Test Report

Validation Date : 24-Jan-2006
Measurement Date : 24-Jan-2006

Product Data

Device Name : Benq
Type : Clamshell Cell Phone
Model : HERC3A(M580a)
Frequency : 850.00 MHz
Max. Transmit Pwr : 2 W
Drift Time : 0 min(s)
Length : 88.7 mm
Width : 44.2 mm
Depth : 22.6 mm
Antenna Type : Internal

Phantom Data

Type : Uni-Phantom
Size (mm) : 280 x 280 x 200
Location : Center

Tissue Data

Type : BODY
Serial No. : 322-B
Frequency : 835.00 MHz
Last Calib. Date : 24-Jan-2006
Temperature : 20.80 °C
Ambient Temp. : 21.20 °C
Humidity : 57.00 RH%
Epsilon : 53.54 F/m
Sigma : 0.993 S/m
Density : 1000.00 kg/cu. m

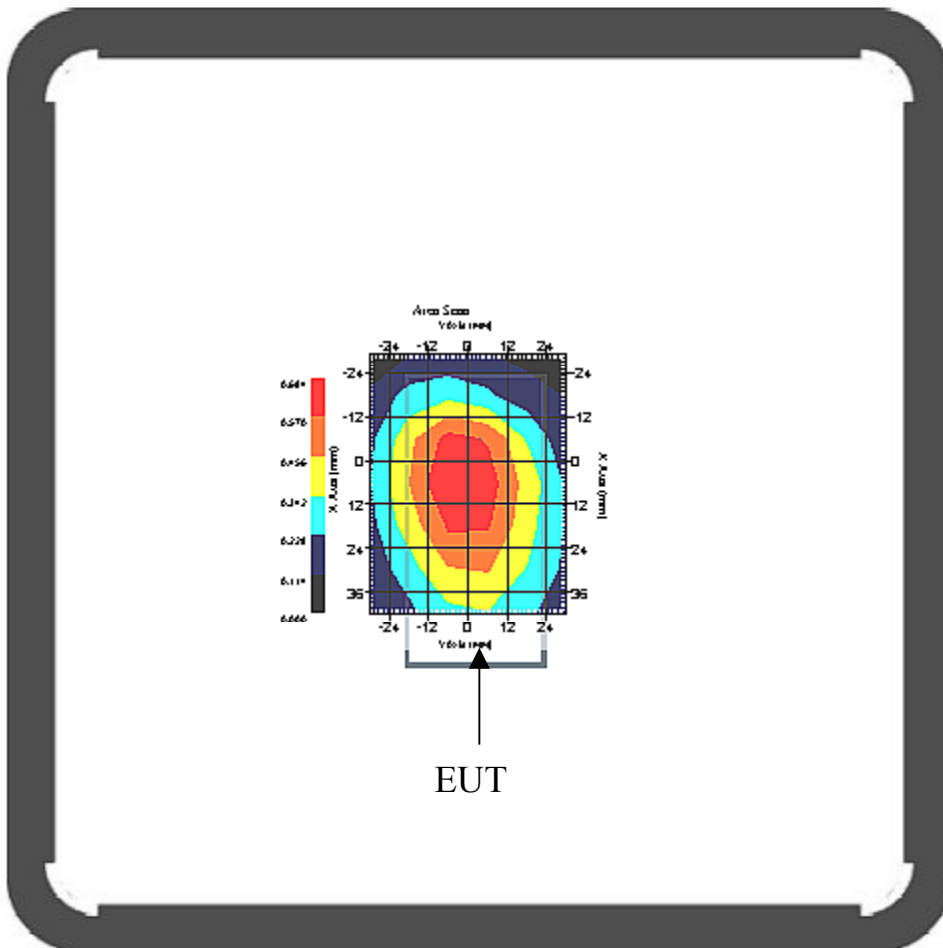
Probe Data

Name : Probe 265
Model : E020
Type : E-Field Triangle
Serial No. : 265
Last Calib. Date : 23-Mar-2005
Frequency : 835.00 MHz
Duty Cycle Factor: 4
Conversion Factor: 6.6
Probe Sensitivity: 1.20 1.20 1.20 $\mu\text{V}/(\text{V}/\text{m})^2$
Compression Point: 95.00 mV
Offset : 1.56 mm

Measurement Data

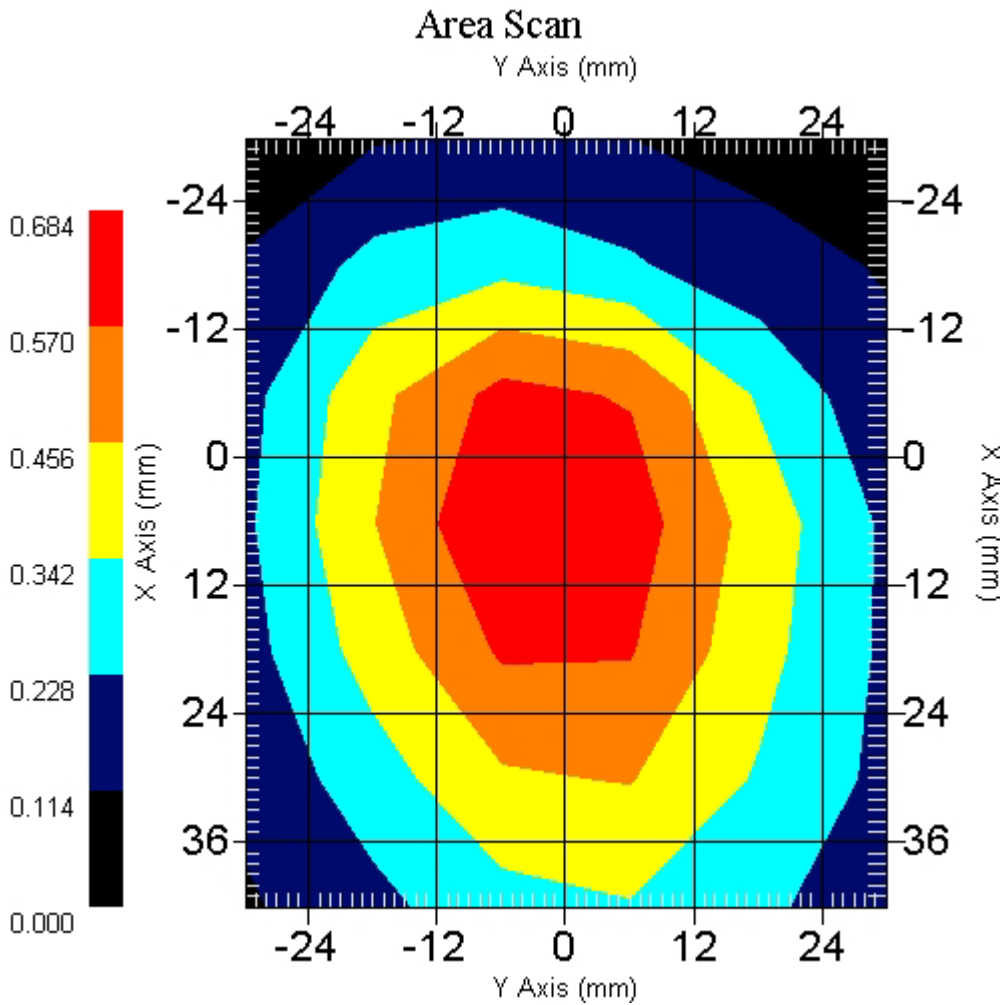
Crest Factor : 4
 Tissue Temp. : 20.80 °C
 Ambient Temp. : 21.20 °C
 Area Scan : 7x6x1 : Measurement x=12mm, y=12mm, z=4mm
 Zoom Scan : 7x7x7 : Measurement x=5mm, y=5mm, z=5mm
 Power Drift-Start : 0.624 W/kg
 Power Drift-Finish: 0.617 W/kg
 Power Drift (%) : -1.299

DUT Position : Touch
 Channel : 128



1 gram SAR value : 0.618 W/kg
 10 gram SAR value : 0.393 W/kg
 Area Scan Peak SAR : 0.682 W/kg
 Zoom Scan Peak SAR : 0.900 W/kg

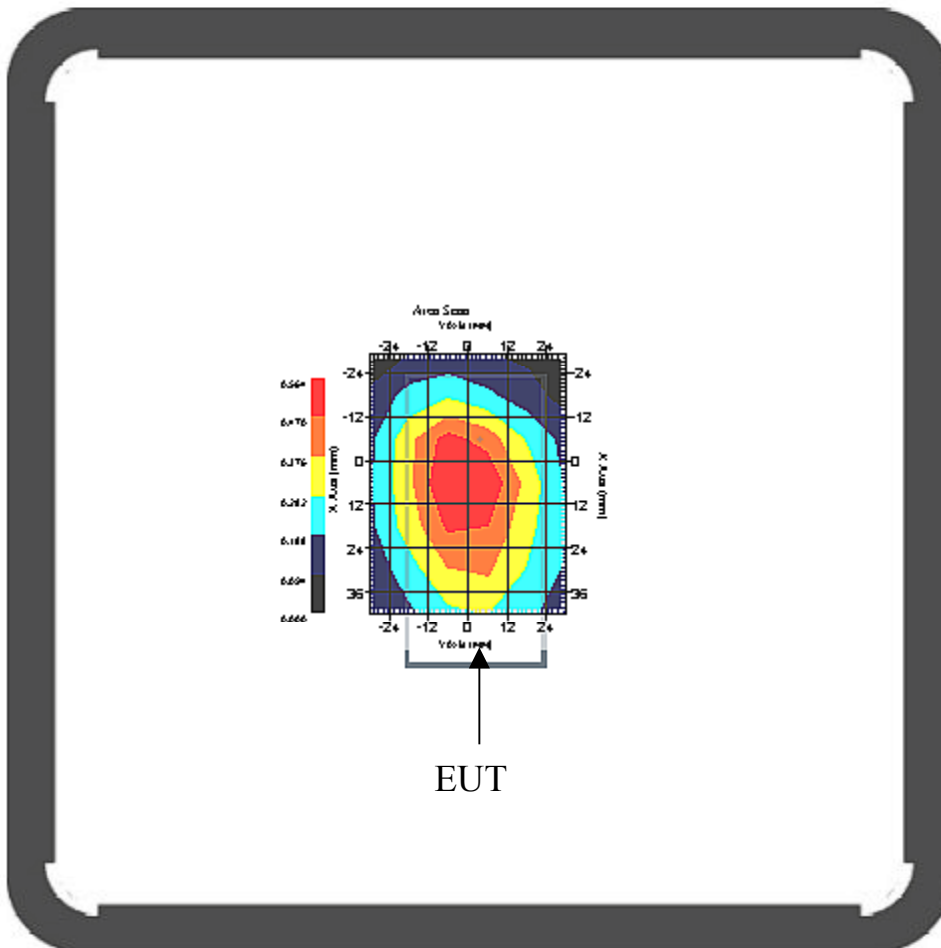
This is previous page plot (zoom in)



Measurement Data

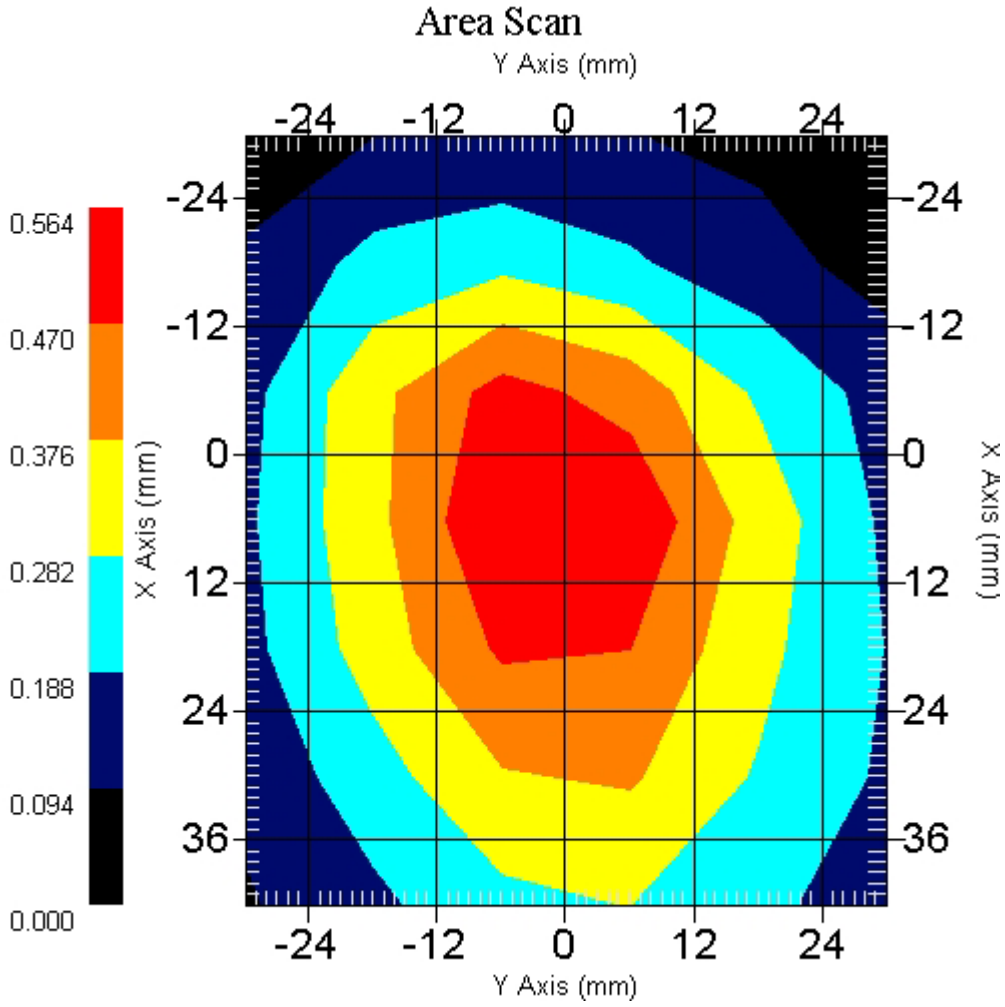
Crest Factor : 4
Tissue Temp. : 20.80 °C
Ambient Temp. : 21.20 °C
Area Scan : 7x6x1 : Measurement x=12mm, y=12mm, z=4mm
Zoom Scan : 7x7x7 : Measurement x=5mm, y=5mm, z=5mm
Power Drift-Start : 0.560 W/kg
Power Drift-Finish: 0.557 W/kg
Power Drift (%) : -0.664

DUT Position : Touch
Channel : 189



1 gram SAR value : 0.538 W/kg
10 gram SAR value : 0.361 W/kg
Area Scan Peak SAR : 0.562 W/kg
Zoom Scan Peak SAR : 0.770 W/kg

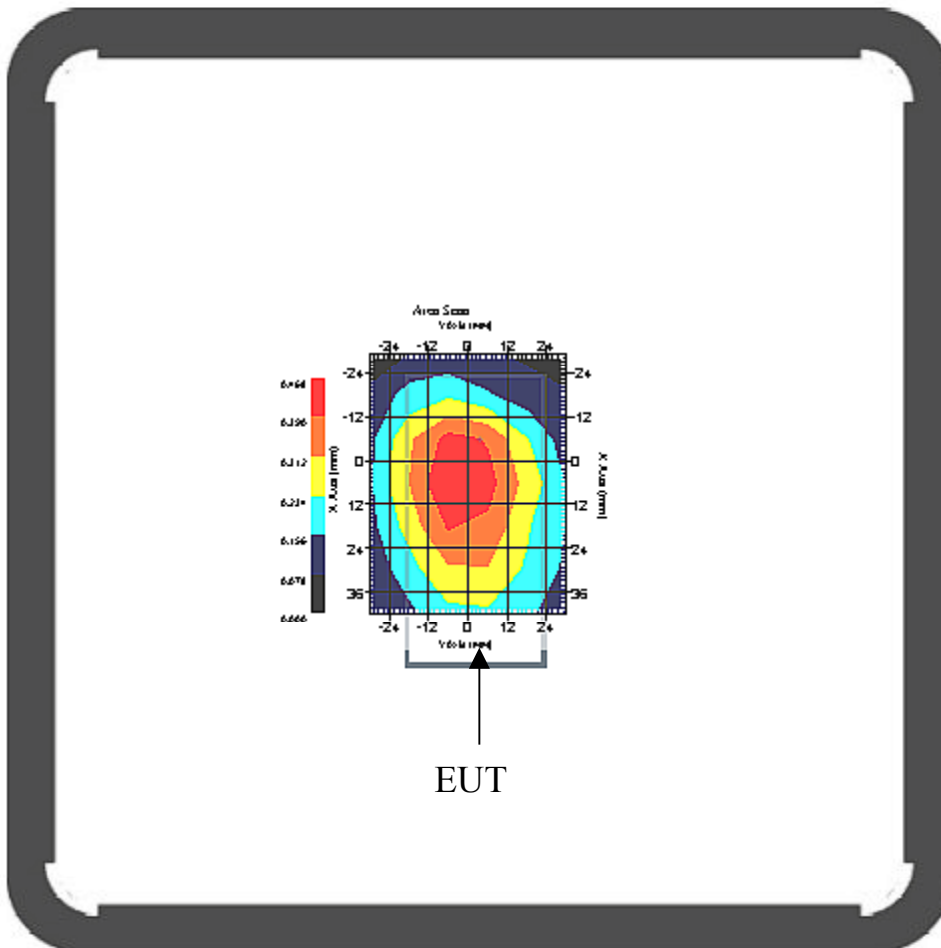
This is previous page plot (zoom in)



Measurement Data

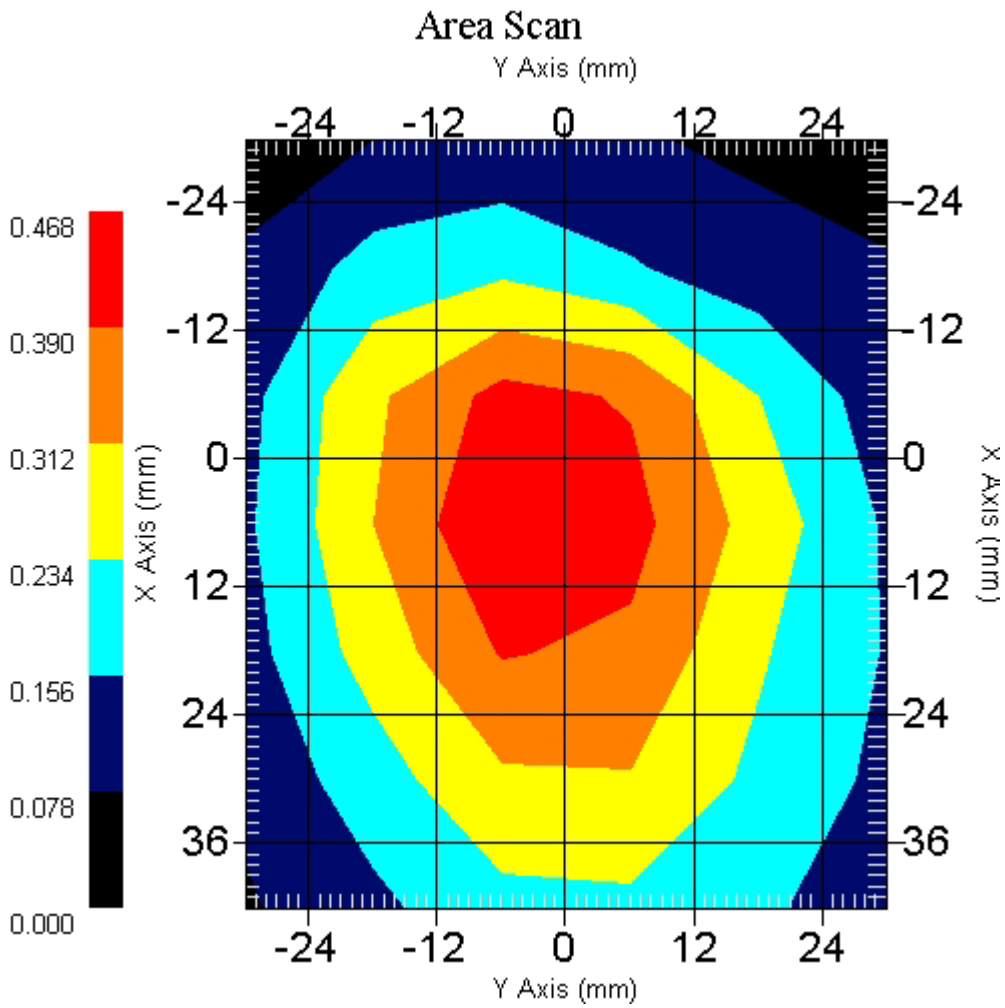
Crest Factor : 4
 Tissue Temp. : 20.80 °C
 Ambient Temp. : 21.20 °C
 Area Scan : 7x6x1 : Measurement x=12mm, y=12mm, z=4mm
 Zoom Scan : 7x7x7 : Measurement x=5mm, y=5mm, z=5mm
 Power Drift-Start : 0.452 W/kg
 Power Drift-Finish: 0.458 W/kg
 Power Drift (%) : 1.296

DUT Position : Touch
 Channel : 251



1 gram SAR value : 0.415 W/kg
 10 gram SAR value : 0.263 W/kg
 Area Scan Peak SAR : 0.465 W/kg
 Zoom Scan Peak SAR : 0.610 W/kg

This is previous page plot (zoom in)



ALSAS-10U VER 2.2.0 APREL Laboratories SAR Test Report

Validation Date : 25-Jan-2006
Measurement Date : 25-Jan-2006

Product Data

Device Name : Benq
Type : Clamshell Cell Phone
Model : HERC3A(M580a)
Frequency : 1900.00 MHz
Max. Transmit Pwr : 1 W
Drift Time : 0 min(s)
Length : 162.4 mm
Width : 44.2 mm
Depth : 12.5 mm
Antenna Type : Internal

Phantom Data

Type : SAM-Right
Size (mm) : 280 x 280 x 280
Location : Right

Tissue Data

Type : HEAD
Serial No. : 324-H
Frequency : 1900.00 MHz
Last Calib. Date : 25-Jan-2006
Temperature : 20.80 °C
Ambient Temp. : 21.20 °C
Humidity : 57.00 RH%
Epsilon : 38.46 F/m
Sigma : 1.431 S/m
Density : 1000.00 kg/cu. m

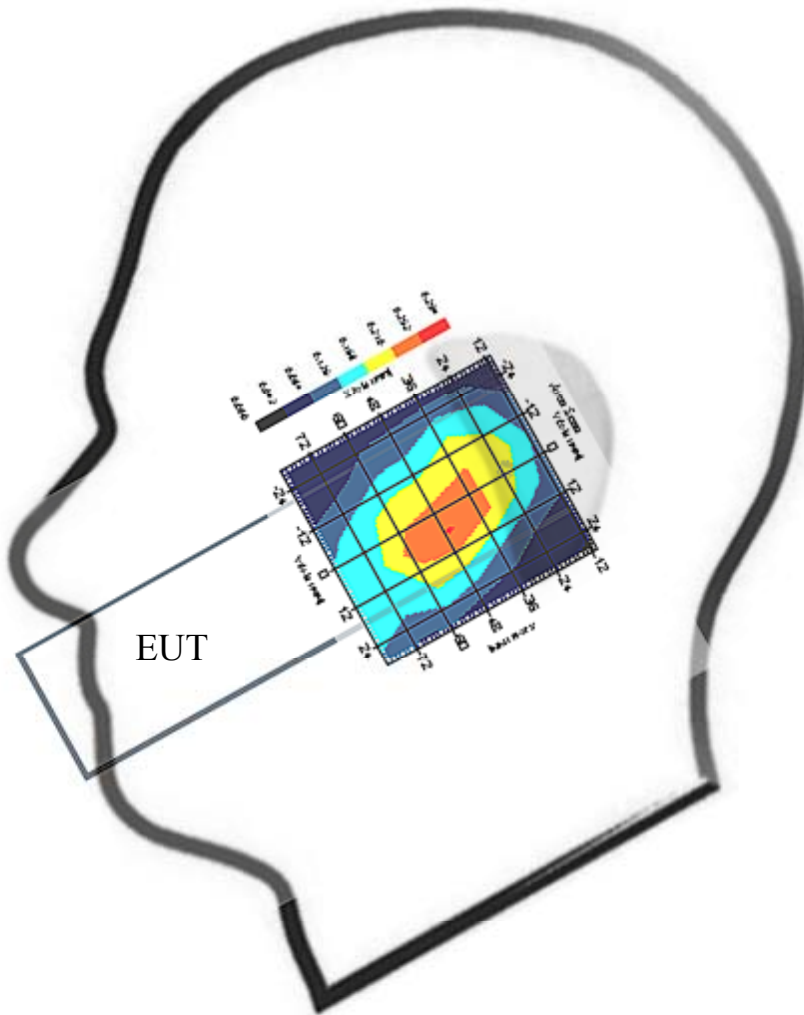
Probe Data

Name : Probe 265
Model : E020
Type : E-Field Triangle
Serial No. : 265
Last Calib. Date : 23-Mar-2005
Frequency : 1900.00 MHz
Duty Cycle Factor: 8
Conversion Factor: 4.9
Probe Sensitivity: 1.20 1.20 1.20 $\mu\text{V}/(\text{V}/\text{m})^2$
Compression Point: 95.00 mV
Offset : 1.56 mm

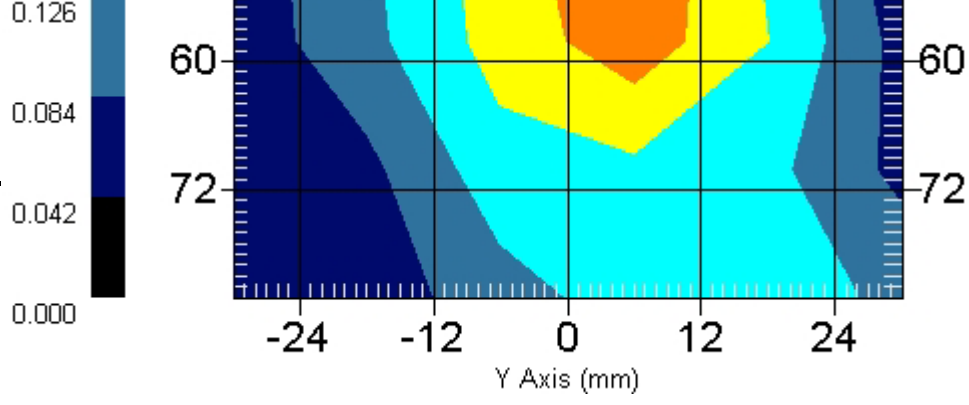
Measurement Data

Crest Factor : 8
Tissue Temp. : 20.80 °C
Ambient Temp. : 21.20 °C
Area Scan : 7x6x1 : Measurement x=12mm, y=12mm, z=4mm
Zoom Scan : 7x7x7 : Measurement x=5mm, y=5mm, z=5mm
Power Drift-Start : 0.063 W/kg
Power Drift-Finish: 0.061 W/kg
Power Drift (%) : -2.964

DUT Position : Touch
Channel : 512



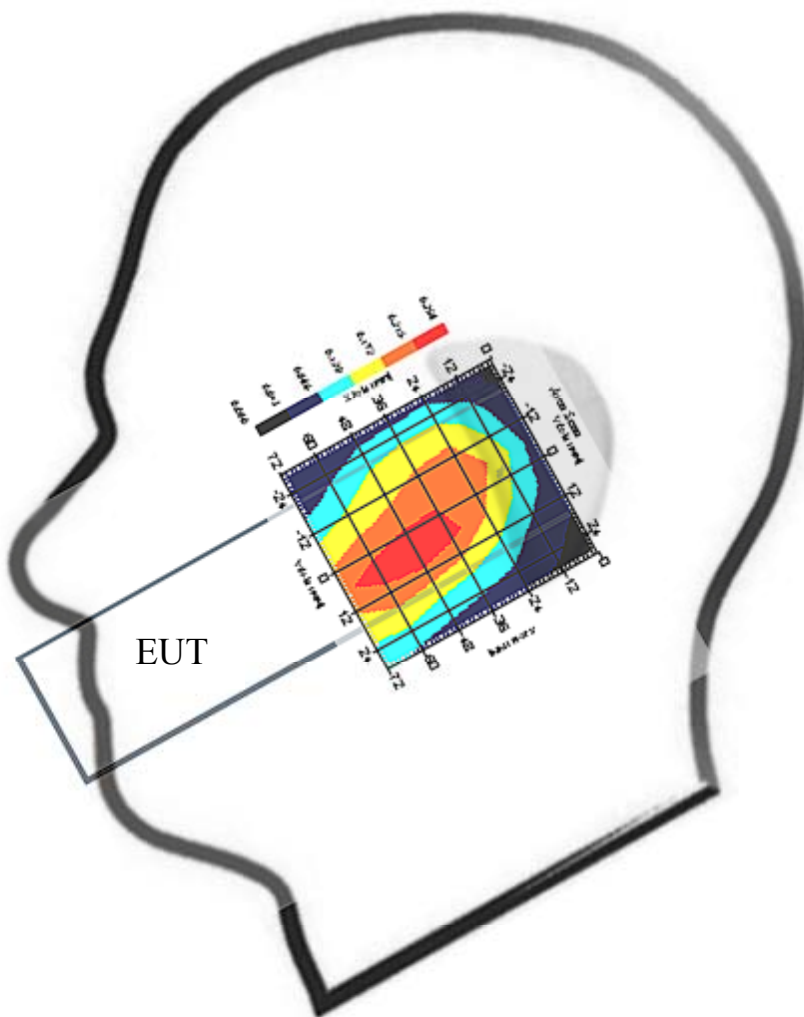
1 gram SAR value : 0.240 W/kg
10 gram SAR value : 0.149 W/kg
Area Scan Peak SAR : 0.255 W/kg
Zoom Scan Peak SAR : 0.370 W/kg



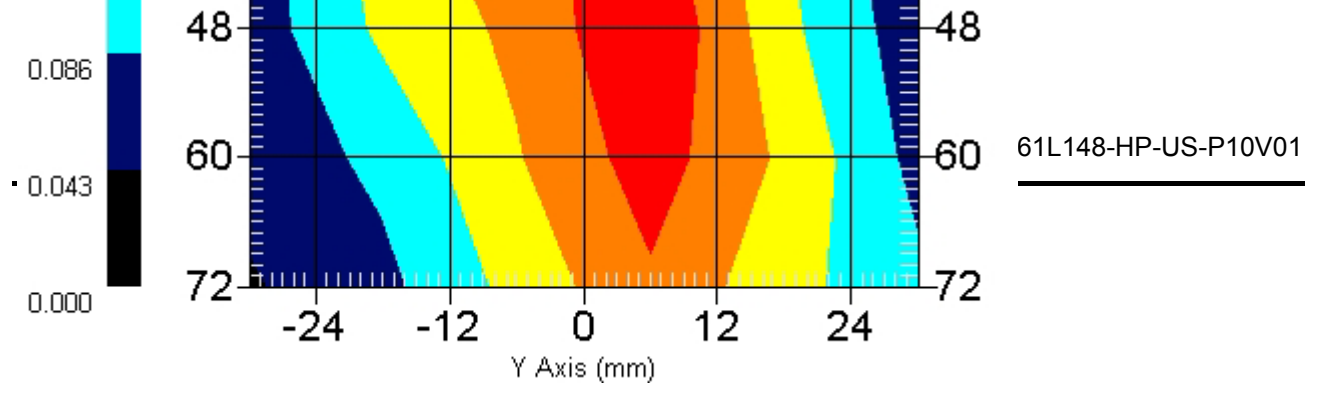
Measurement Data

Crest Factor : 8
Tissue Temp. : 20.80 °C
Ambient Temp. : 21.20 °C
Area Scan : 7x6x1 : Measurement x=12mm, y=12mm, z=4mm
Zoom Scan : 7x7x7 : Measurement x=5mm, y=5mm, z=5mm
Power Drift-Start : 0.064 W/kg
Power Drift-Finish: 0.064 W/kg
Power Drift (%) : -1.982

DUT Position : Touch
Channel : 661



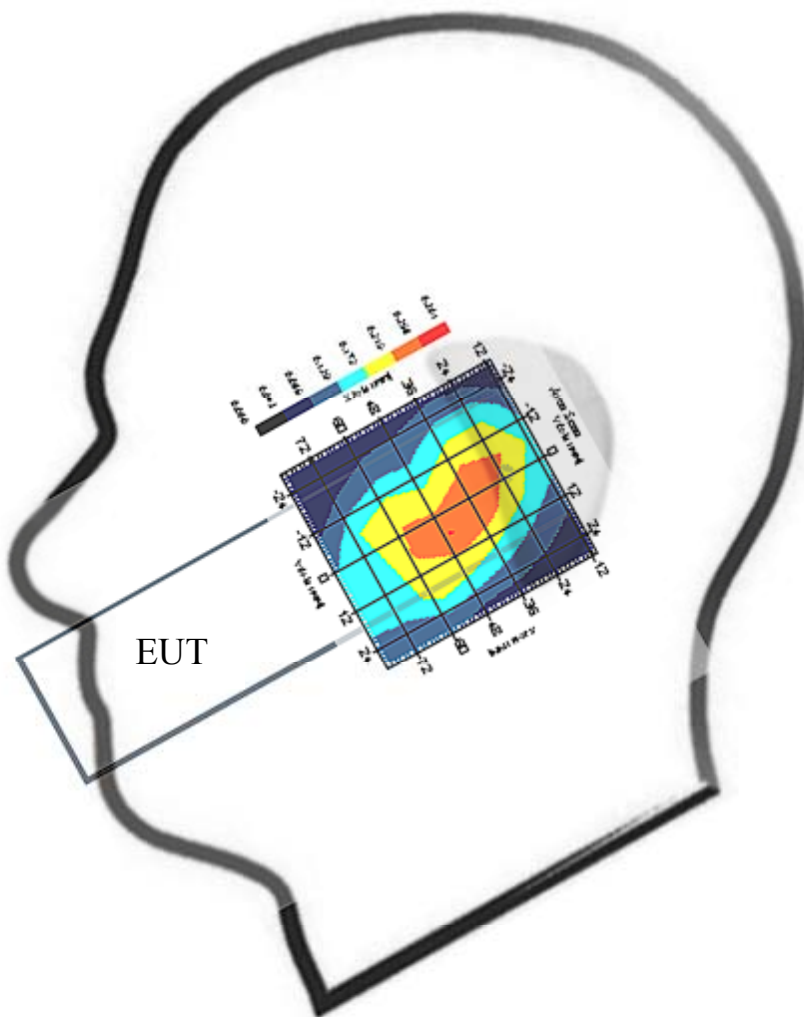
1 gram SAR value : 0.238 W/kg
10 gram SAR value : 0.143 W/kg
Area Scan Peak SAR : 0.258 W/kg
Zoom Scan Peak SAR : 0.380 W/kg



Measurement Data

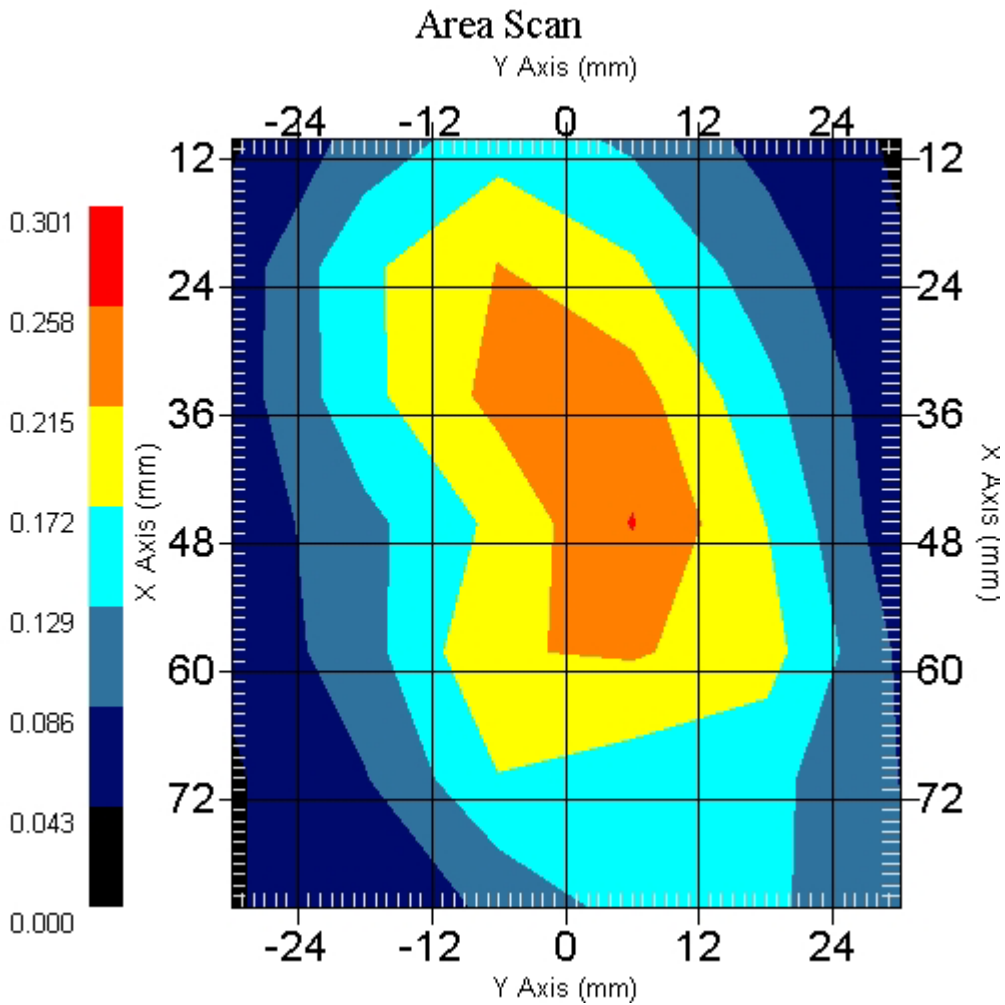
Crest Factor : 8
Tissue Temp. : 20.80 °C
Ambient Temp. : 21.20 °C
Area Scan : 7x6x1 : Measurement x=12mm, y=12mm, z=4mm
Zoom Scan : 7x7x7 : Measurement x=5mm, y=5mm, z=5mm
Power Drift-Start : 0.076 W/kg
Power Drift-Finish: 0.077 W/kg
Power Drift (%) : 1.237

DUT Position : Touch
Channel : 810



1 gram SAR value : 0.241 W/kg
10 gram SAR value : 0.147 W/kg
Area Scan Peak SAR : 0.260 W/kg
Zoom Scan Peak SAR : 0.400 W/kg

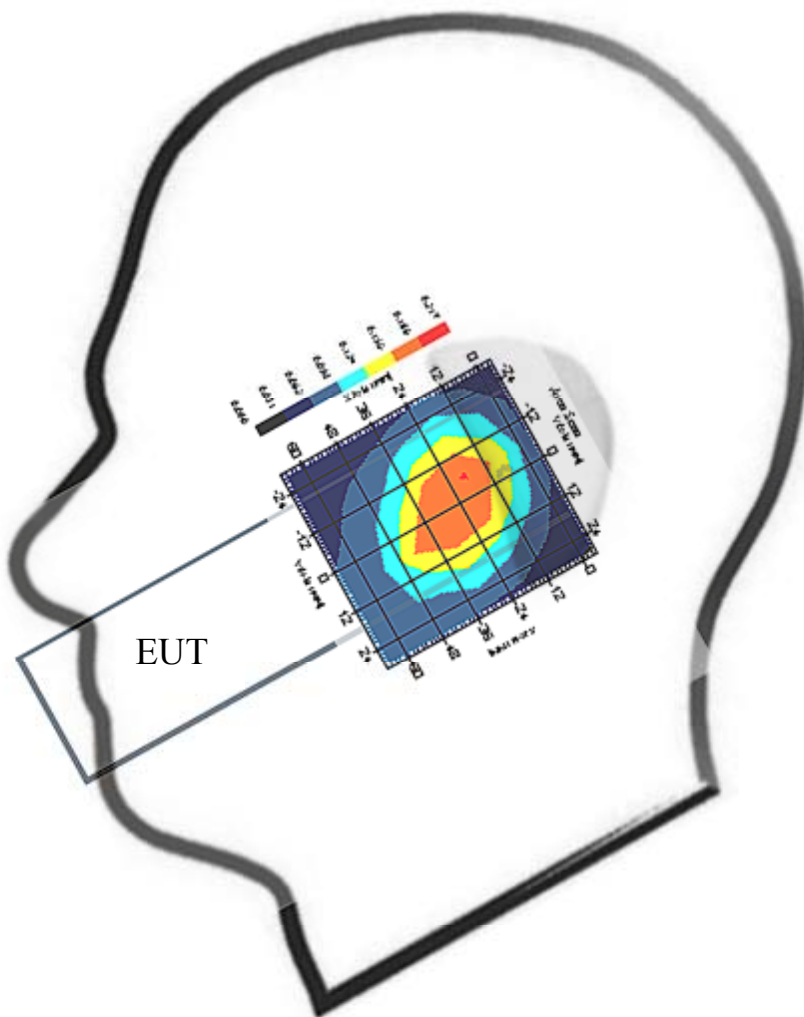
This is previous page plot (zoom in)



Measurement Data

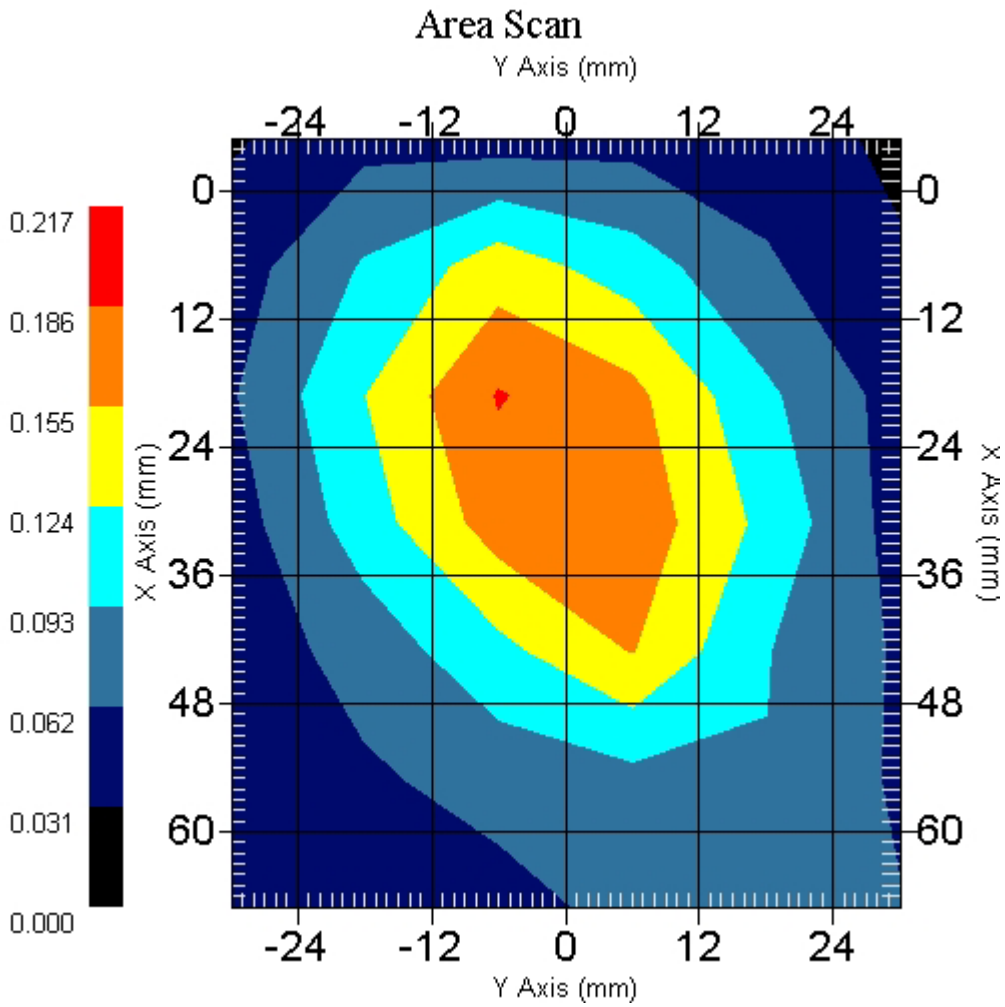
Crest Factor : 8
Tissue Temp. : 20.80 °C
Ambient Temp. : 21.20 °C
Area Scan : 7x6x1 : Measurement x=12mm, y=12mm, z=4mm
Zoom Scan : 7x7x7 : Measurement x=5mm, y=5mm, z=5mm
Power Drift-Start : 0.088 W/kg
Power Drift-Finish: 0.086 W/kg
Power Drift (%) : -2.276

DUT Position : 15° Tilt
Channel : 661



1 gram SAR value : 0.172 W/kg
10 gram SAR value : 0.111 W/kg
Area Scan Peak SAR : 0.188 W/kg
Zoom Scan Peak SAR : 0.260 W/kg

This is previous page plot (zoom in)



ALSAS-10U VER 2.2.0 APREL Laboratories

SAR Test Report

Validation Date : 25-Jan-2006
Measurement Date : 25-Jan-2006

Product Data

Device Name : Benq
Type : Clamshell Cell Phone
Model : HERC3A(M580a)
Frequency : 1900.00 MHz
Max. Transmit Pwr : 1 W
Drift Time : 0 min(s)
Length : 162.4 mm
Width : 44.2 mm
Depth : 12.5 mm
Antenna Type : Internal

Phantom Data

Type : SAM-Left
Size (mm) : 280 x 280 x 280
Location : Left

Tissue Data

Type : HEAD
Serial No. : 324-H
Frequency : 1900.00 MHz
Last Calib. Date : 25-Jan-2006
Temperature : 20.80 °C
Ambient Temp. : 21.20 °C
Humidity : 57.00 RH%
Epsilon : 38.46 F/m
Sigma : 1.431 S/m
Density : 1000.00 kg/cu. m

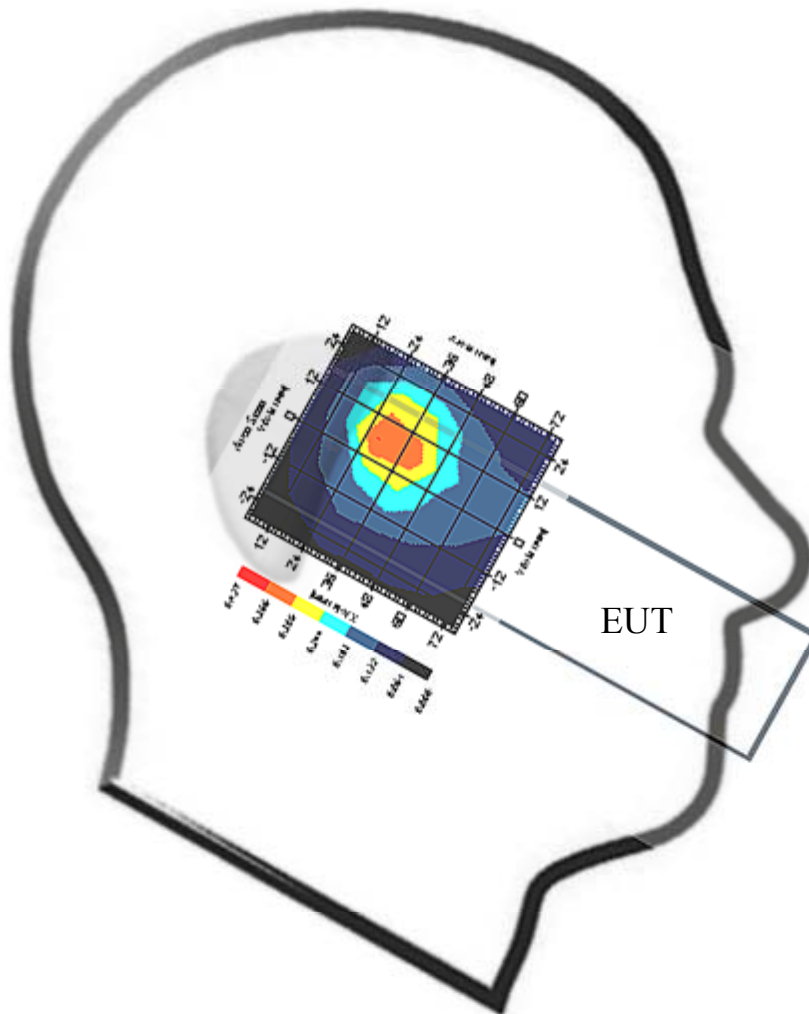
Probe Data

Name : Probe 265
Model : E020
Type : E-Field Triangle
Serial No. : 265
Last Calib. Date : 23-Mar-2005
Frequency : 1900.00 MHz
Duty Cycle Factor: 8
Conversion Factor: 4.9
Probe Sensitivity: 1.20 1.20 1.20 $\mu\text{V}/(\text{V}/\text{m})^2$
Compression Point: 95.00 mV
Offset : 1.56 mm

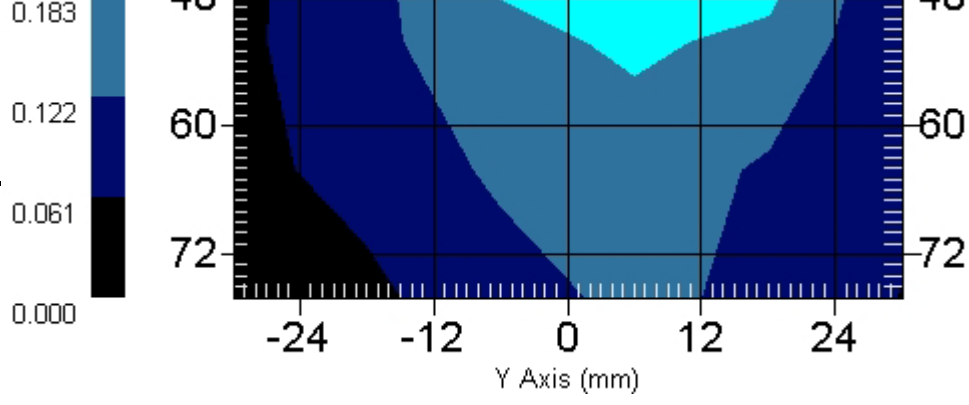
Measurement Data

Crest Factor : 8
Tissue Temp. : 20.80 °C
Ambient Temp. : 21.20 °C
Area Scan : 7x6x1 : Measurement x=12mm, y=12mm, z=4mm
Zoom Scan : 7x7x7 : Measurement x=5mm, y=5mm, z=5mm
Power Drift-Start : 0.046 W/kg
Power Drift-Finish: 0.046 W/kg
Power Drift (%) : -0.755

DUT Position : Touch
Channel : 512



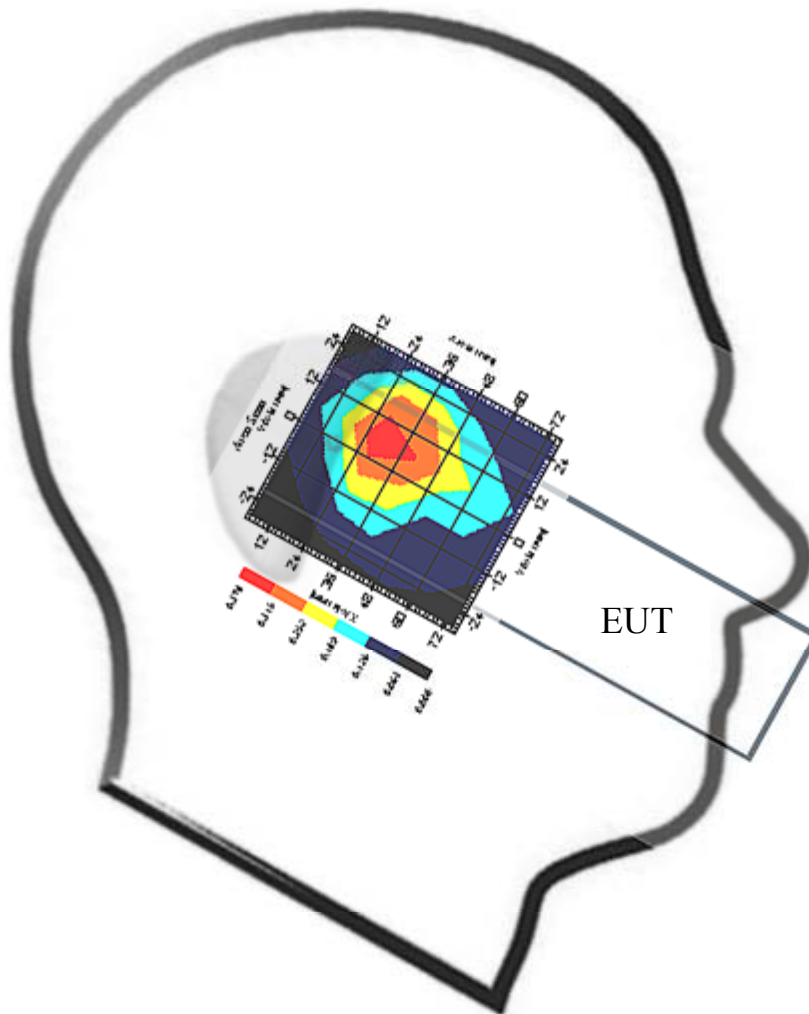
1 gram SAR value : 0.266 W/kg
10 gram SAR value : 0.168 W/kg
Area Scan Peak SAR : 0.367 W/kg
Zoom Scan Peak SAR : 0.470 W/kg



Measurement Data

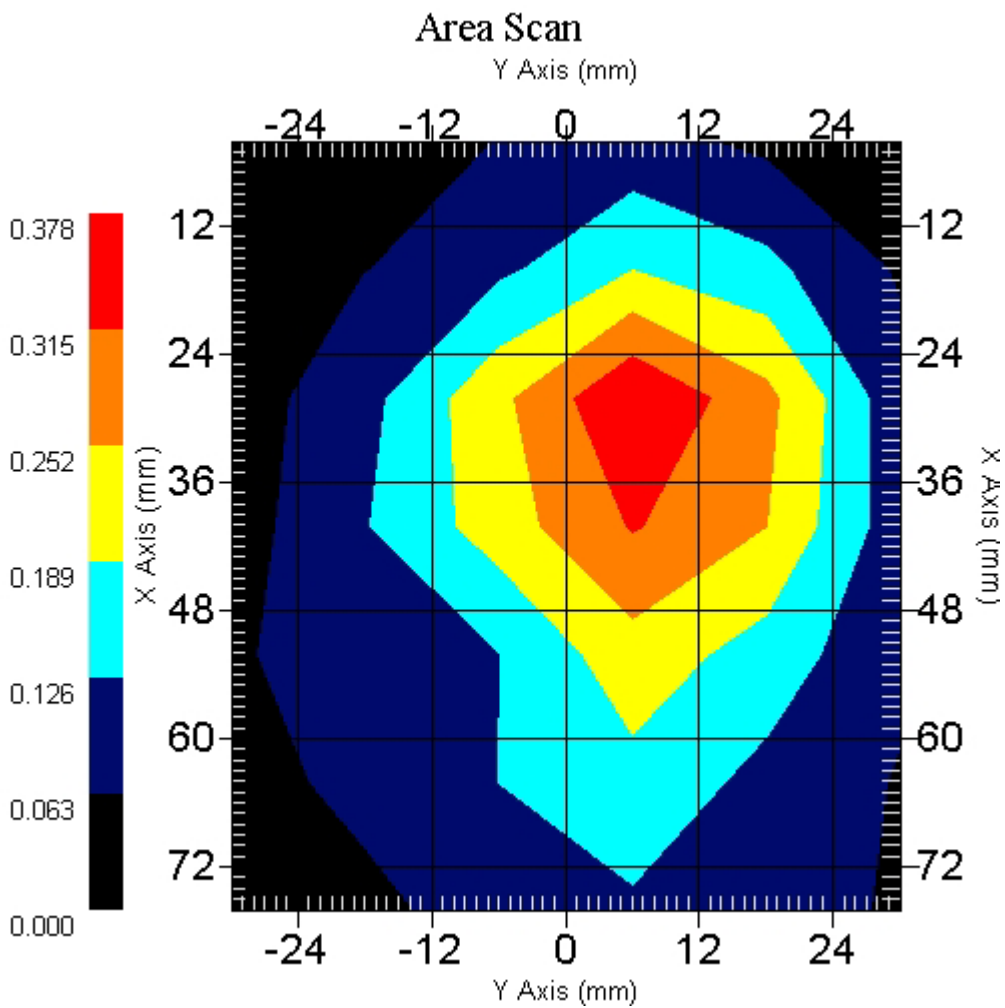
Crest Factor : 8
Tissue Temp. : 20.80 °C
Ambient Temp. : 21.20 °C
Area Scan : 7x6x1 : Measurement x=12mm, y=12mm, z=4mm
Zoom Scan : 7x7x7 : Measurement x=5mm, y=5mm, z=5mm
Power Drift-Start : 0.052 W/kg
Power Drift-Finish: 0.051 W/kg
Power Drift (%) : -0.367

DUT Position : Touch
Channel : 661



1 gram SAR value : 0.318 W/kg
10 gram SAR value : 0.181 W/kg
Area Scan Peak SAR : 0.377 W/kg
Zoom Scan Peak SAR : 0.500 W/kg

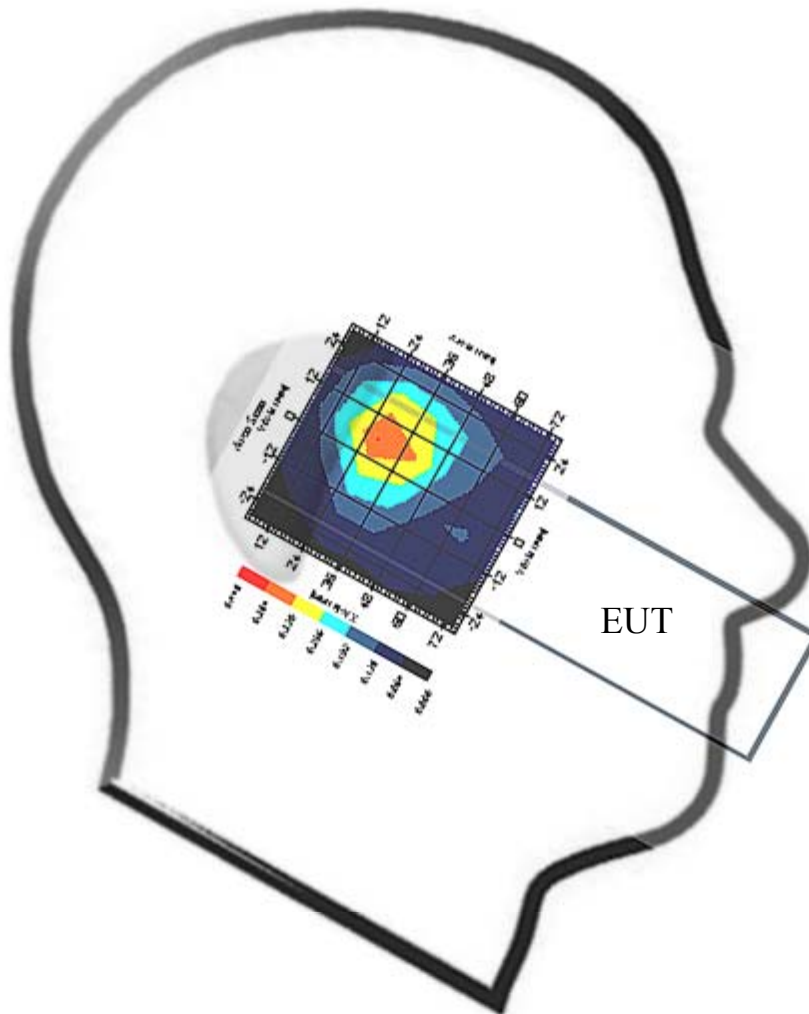
This is previous page plot (zoom in)



Measurement Data

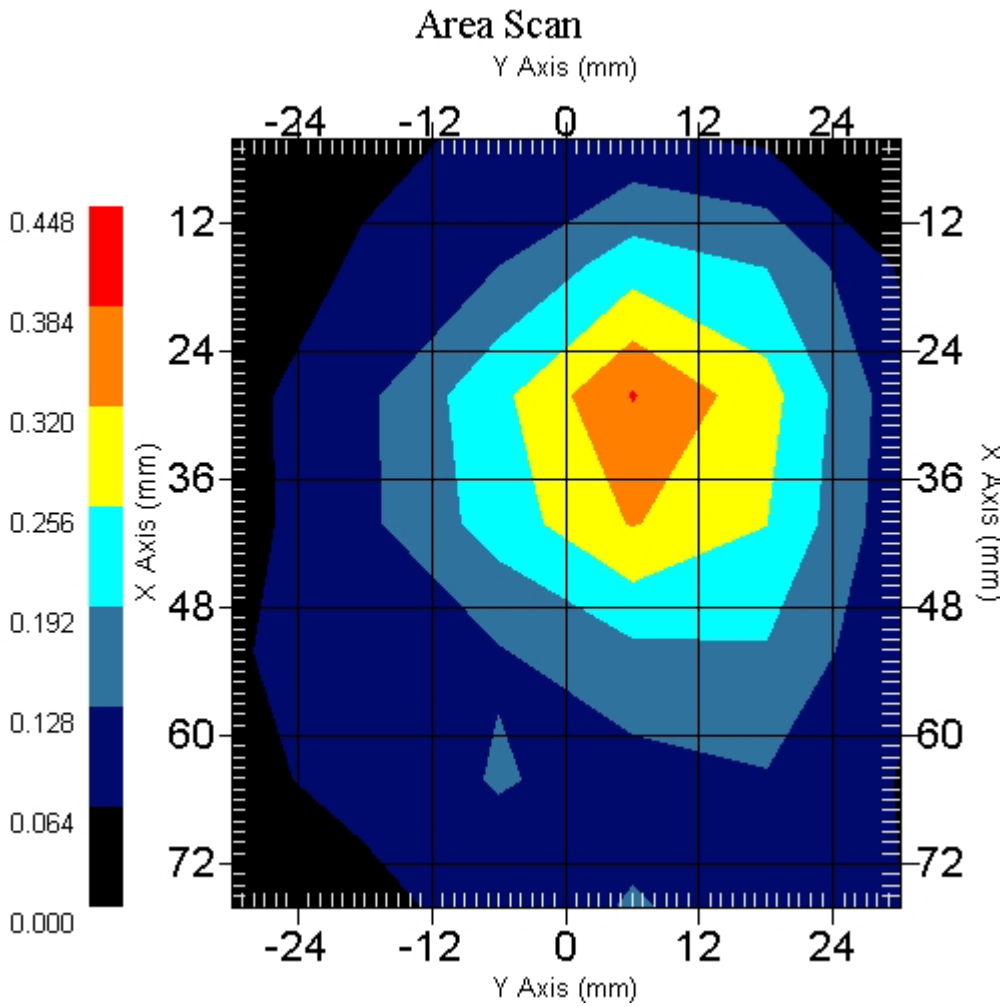
Crest Factor : 8
Tissue Temp. : 20.80 °C
Ambient Temp. : 21.20 °C
Area Scan : 7x6x1 : Measurement x=12mm, y=12mm, z=4mm
Zoom Scan : 7x7x7 : Measurement x=5mm, y=5mm, z=5mm
Power Drift-Start : 0.063 W/kg
Power Drift-Finish: 0.064 W/kg
Power Drift (%) : 1.483

DUT Position : Touch
Channel : 810



1 gram SAR value : 0.362 W/kg
10 gram SAR value : 0.197 W/kg
Area Scan Peak SAR : 0.387 W/kg
Zoom Scan Peak SAR : 0.660 W/kg

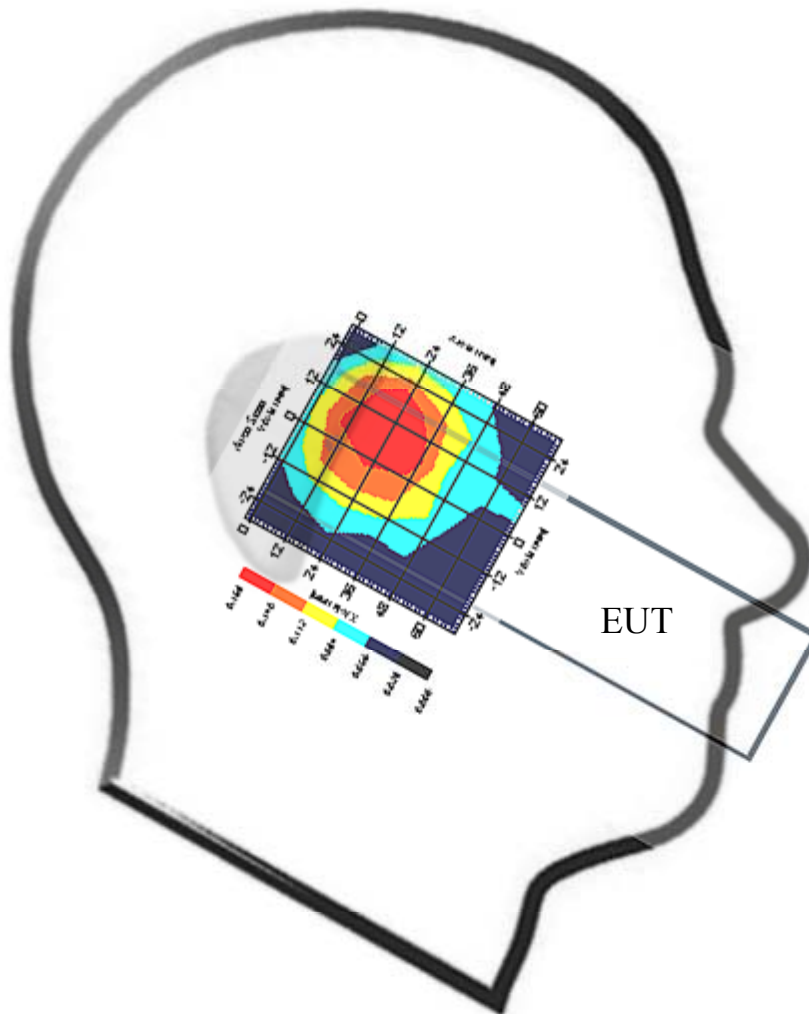
This is previous page plot (zoom in)



Measurement Data

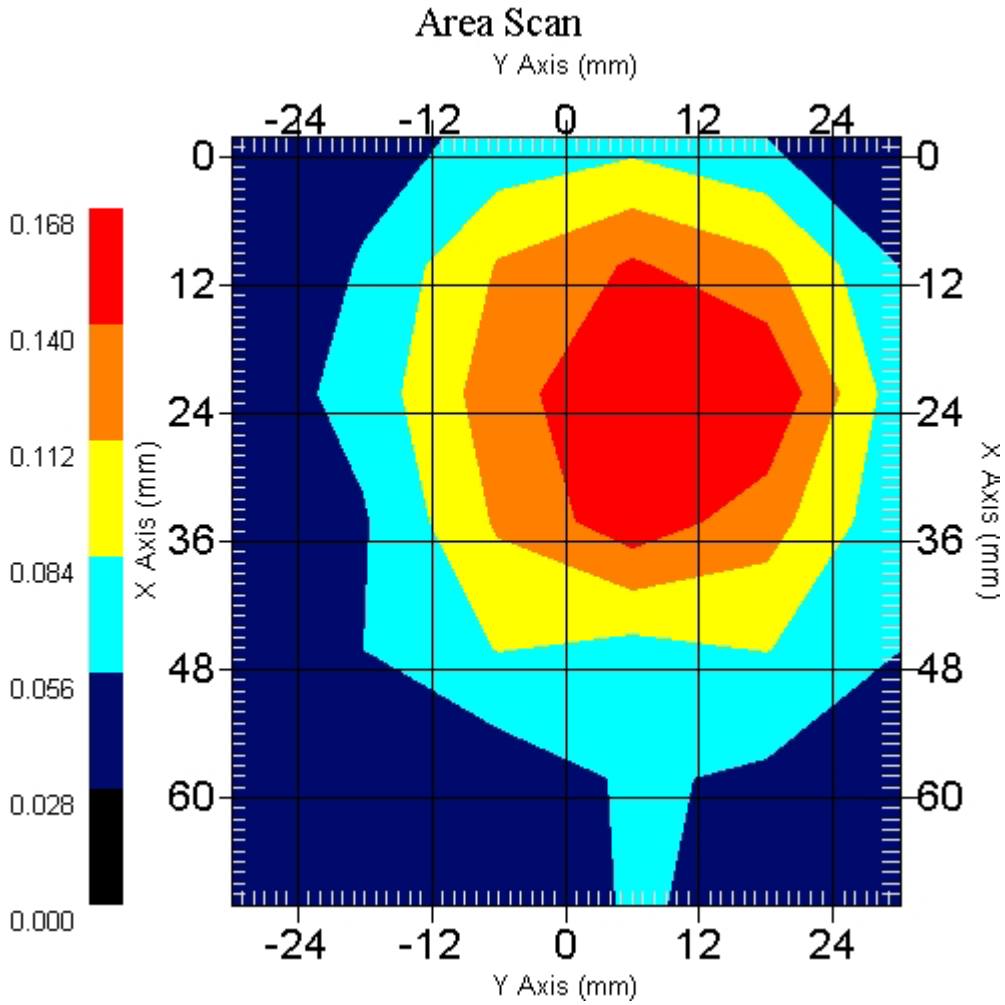
Crest Factor : 8
Tissue Temp. : 20.80 °C
Ambient Temp. : 21.20 °C
Area Scan : 7x6x1 : Measurement x=12mm, y=12mm, z=4mm
Zoom Scan : 7x7x7 : Measurement x=5mm, y=5mm, z=5mm
Power Drift-Start : 0.073 W/kg
Power Drift-Finish: 0.072 W/kg
Power Drift (%) : -1.911

DUT Position : 15° Tilt
Channel : 661



1 gram SAR value : 0.183 W/kg
10 gram SAR value : 0.112 W/kg
Area Scan Peak SAR : 0.168 W/kg
Zoom Scan Peak SAR : 0.250 W/kg

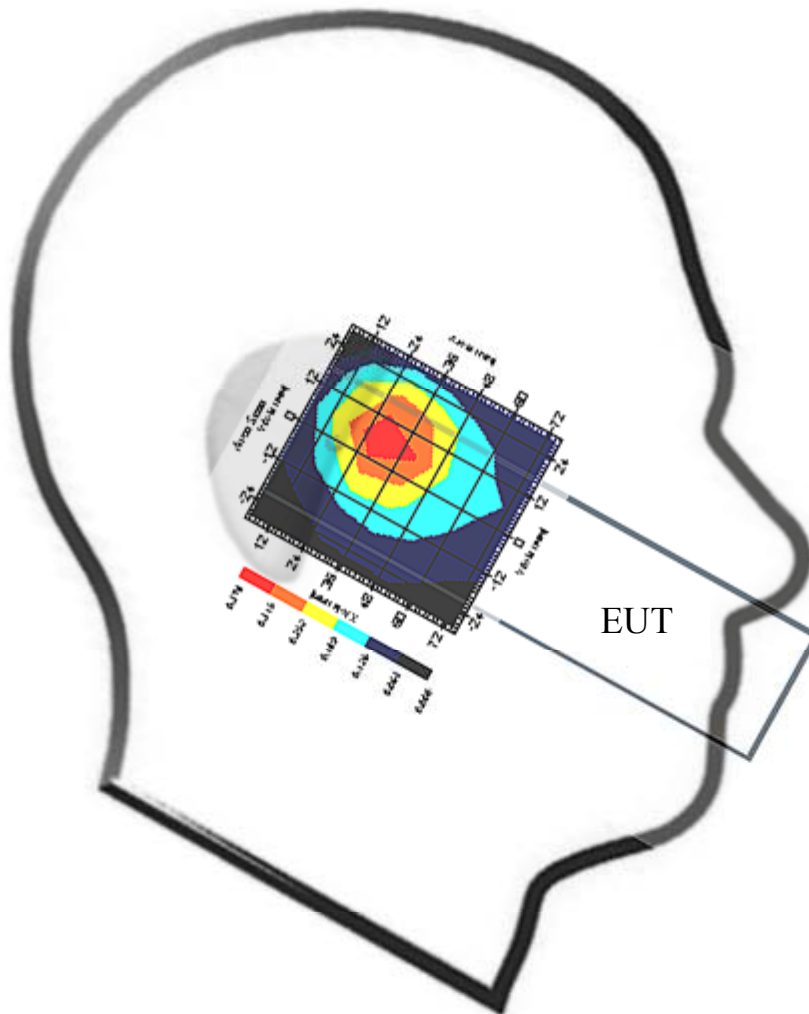
This is previous page plot (zoom in)



Measurement Data

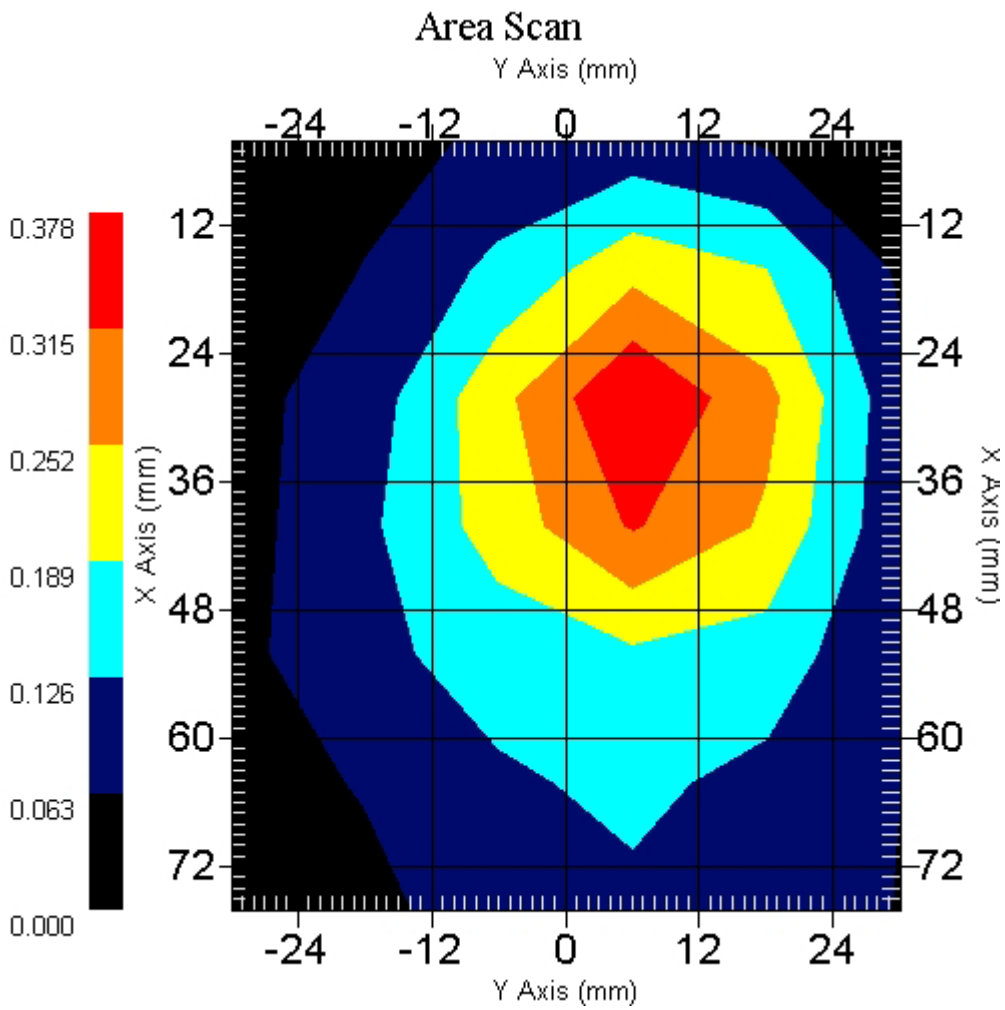
Crest Factor : 8
Tissue Temp. : 20.80 °C
Ambient Temp. : 21.20 °C
Area Scan : 7x6x1 : Measurement x=12mm, y=12mm, z=4mm
Zoom Scan : 7x7x7 : Measurement x=5mm, y=5mm, z=5mm
Power Drift-Start : 0.060 W/kg
Power Drift-Finish: 0.061 W/kg
Power Drift (%) : 0.693

DUT Position : GSM with Bluetooth-Touch
Channel : 810



1 gram SAR value : 0.311 W/kg
10 gram SAR value : 0.179 W/kg
Area Scan Peak SAR : 0.378 W/kg
Zoom Scan Peak SAR : 0.470 W/kg

This is previous page plot (zoom in)



ALSAS-10U VER 2.2.0 APREL Laboratories

SAR Test Report

Validation Date : 25-Jan-2006
Measurement Date : 25-Jan-2006

Product Data

Device Name : Benq
Type : Clamshell Cell Phone
Model : HERC3A(M580a)
Frequency : 1900.00 MHz
Max. Transmit Pwr : 1 W
Drift Time : 0 min(s)
Length : 88.7 mm
Width : 44.2 mm
Depth : 22.6 mm
Antenna Type : Internal

Phantom Data

Type : Uni-Phantom
Size (mm) : 280 x 280 x 200
Location : Center

Tissue Data

Type : BODY
Serial No. : 324-B
Frequency : 1900.00 MHz
Last Calib. Date : 25-Jan-2006
Temperature : 20.80 °C
Ambient Temp. : 21.20 °C
Humidity : 57.00 RH%
Epsilon : 51.78 F/m
Sigma : 1.567 S/m
Density : 1000.00 kg/cu. m

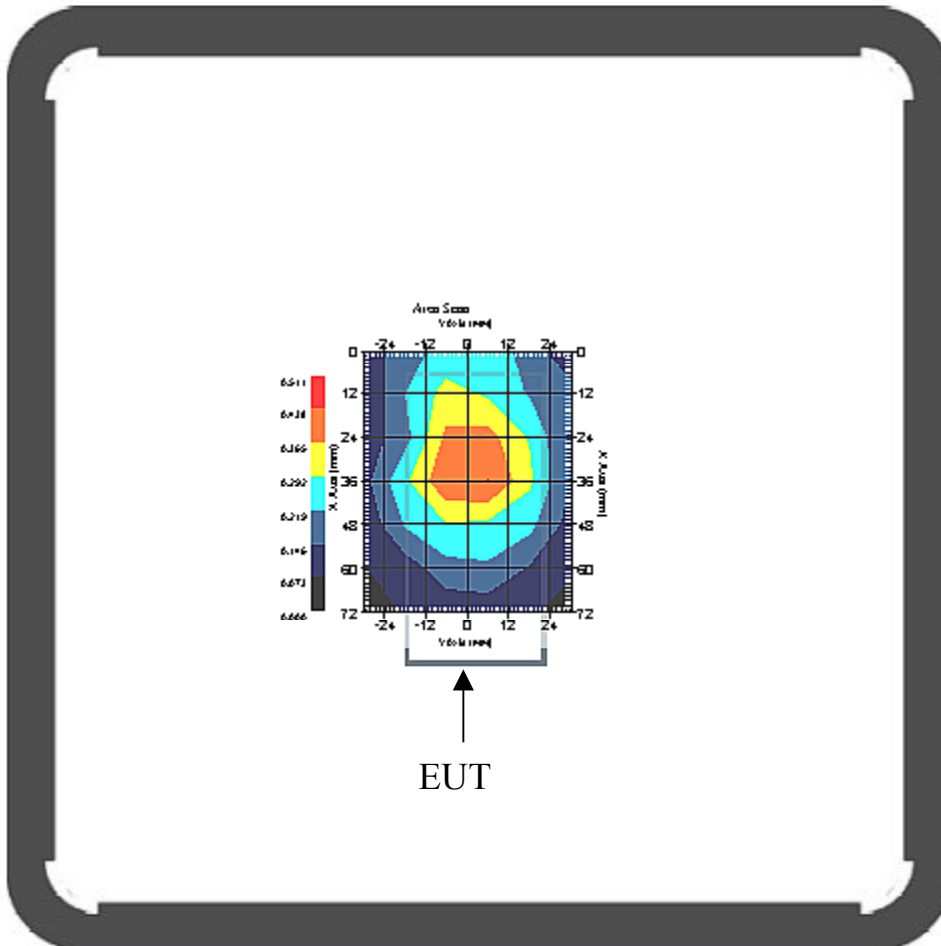
Probe Data

Name : Probe 265
Model : E020
Type : E-Field Triangle
Serial No. : 265
Last Calib. Date : 23-Mar-2005
Frequency : 1900.00 MHz
Duty Cycle Factor: 8
Conversion Factor: 5.1
Probe Sensitivity: 1.20 1.20 1.20 $\mu\text{V}/(\text{V}/\text{m})^2$
Compression Point: 95.00 mV
Offset : 1.56 mm

Measurement Data

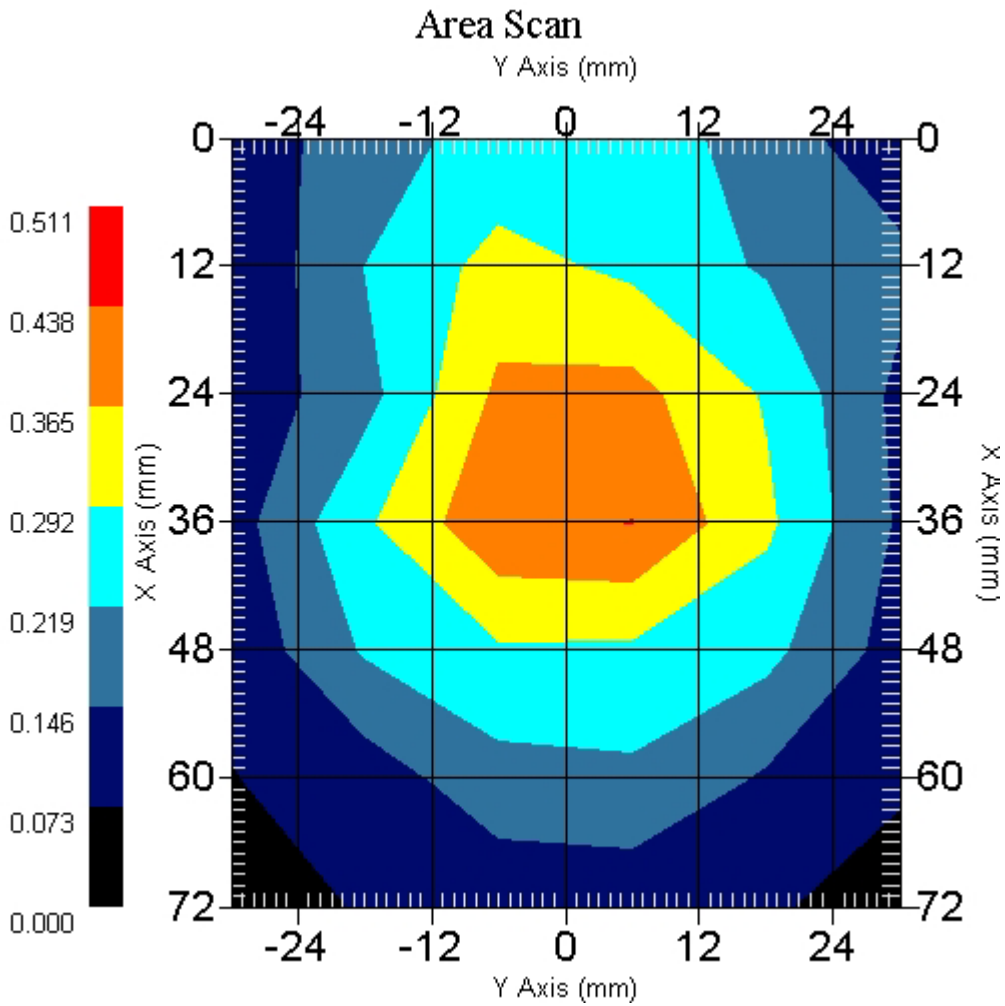
Crest Factor : 8
 Tissue Temp. : 20.80 °C
 Ambient Temp. : 21.20 °C
 Area Scan : 7x6x1 : Measurement x=12mm, y=12mm, z=4mm
 Zoom Scan : 7x7x7 : Measurement x=5mm, y=5mm, z=5mm
 Power Drift-Start : 0.281 W/kg
 Power Drift-Finish: 0.275 W/kg
 Power Drift (%) : -2.036

DUT Position : Touch
 Channel : 512



1 gram SAR value : 0.430 W/kg
 10 gram SAR value : 0.261 W/kg
 Area Scan Peak SAR : 0.439 W/kg
 Zoom Scan Peak SAR : 0.710 W/kg

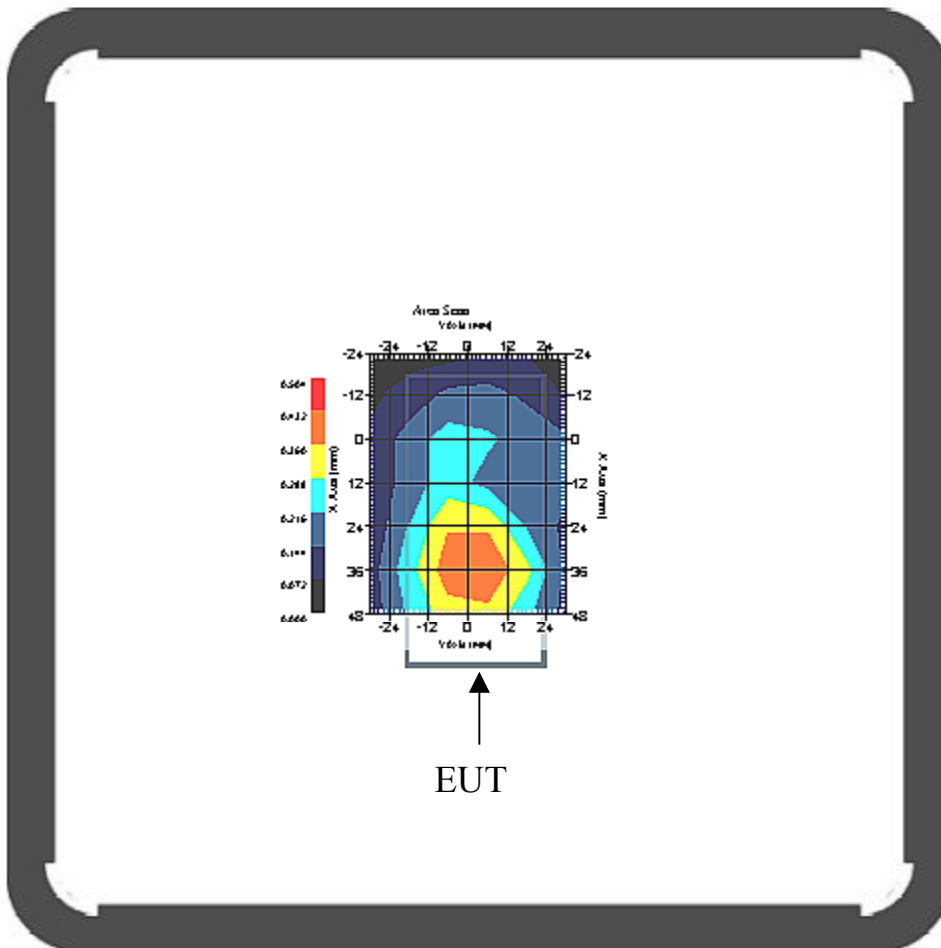
This is previous page plot (zoom in)



Measurement Data

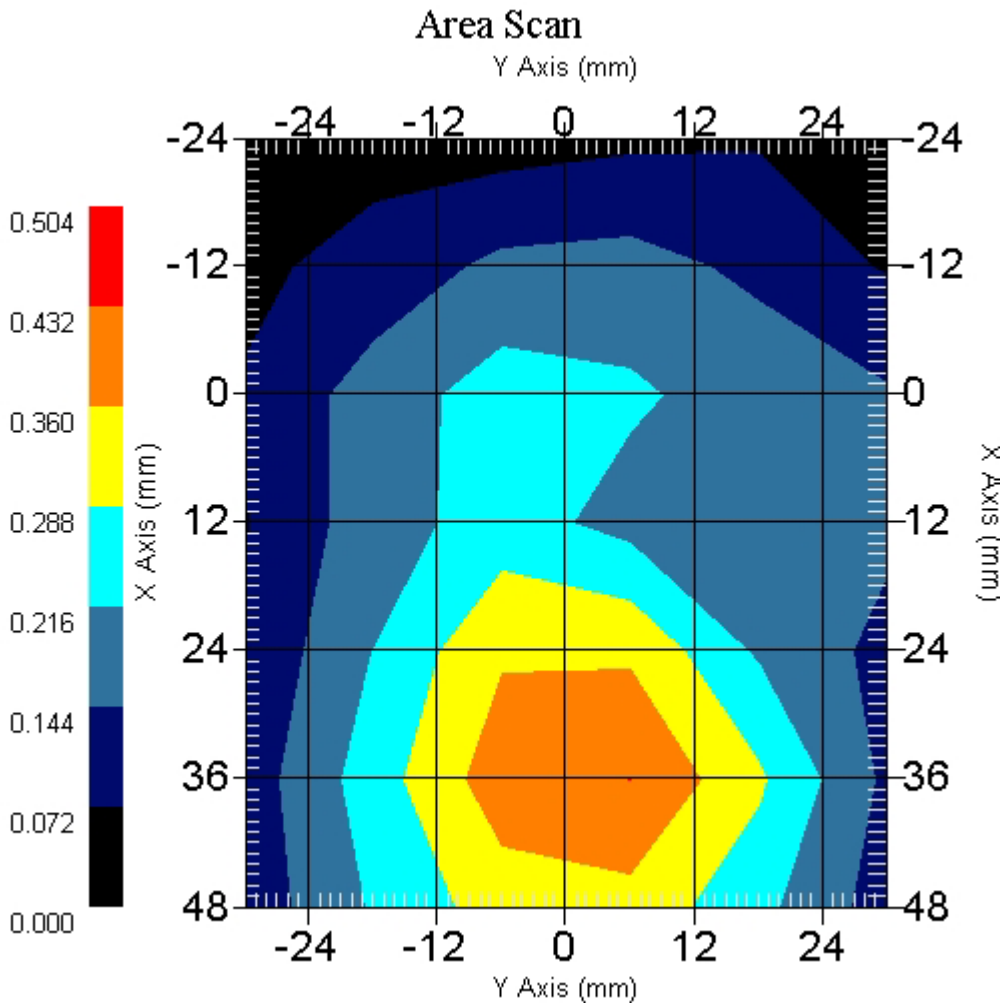
Crest Factor : 8
 Tissue Temp. : 20.80 °C
 Ambient Temp. : 21.20 °C
 Area Scan : 7x6x1 : Measurement x=12mm, y=12mm, z=4mm
 Zoom Scan : 7x7x7 : Measurement x=5mm, y=5mm, z=5mm
 Power Drift-Start : 0.190 W/kg
 Power Drift-Finish: 0.192 W/kg
 Power Drift (%) : 1.616

DUT Position : Touch
 Channel : 661



1 gram SAR value : 0.403 W/kg
 10 gram SAR value : 0.247 W/kg
 Area Scan Peak SAR : 0.432 W/kg
 Zoom Scan Peak SAR : 0.670 W/kg

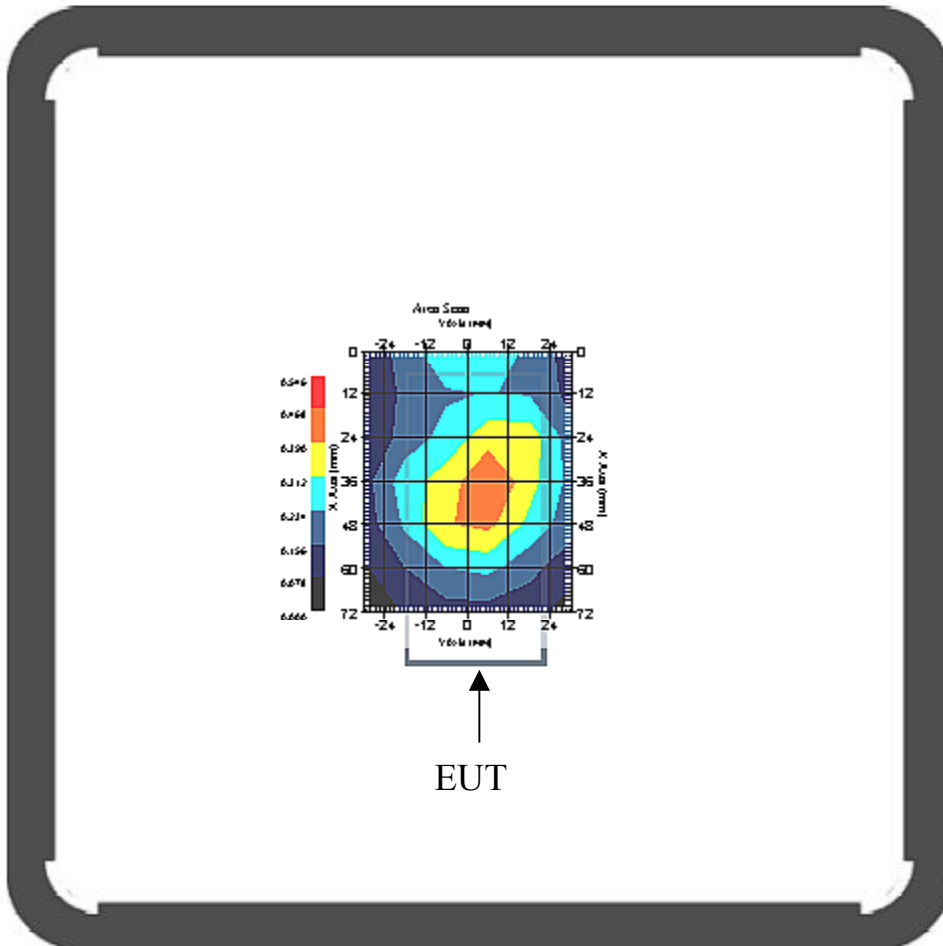
This is previous page plot (zoom in)



Measurement Data

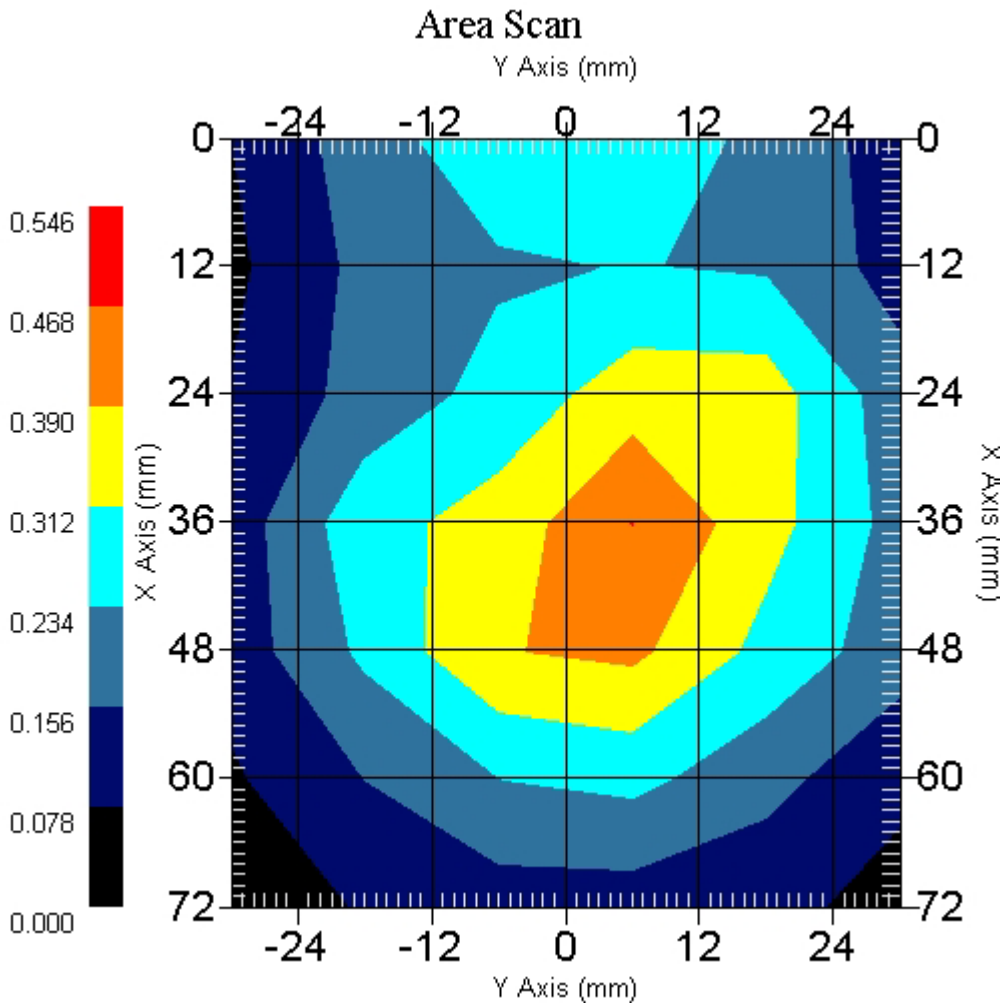
Crest Factor : 8
 Tissue Temp. : 20.80 °C
 Ambient Temp. : 21.20 °C
 Area Scan : 7x6x1 : Measurement x=12mm, y=12mm, z=4mm
 Zoom Scan : 7x7x7 : Measurement x=5mm, y=5mm, z=5mm
 Power Drift-Start : 0.279 W/kg
 Power Drift-Finish: 0.284 W/kg
 Power Drift (%) : 1.924

DUT Position : Touch
 Channel : 810



1 gram SAR value : 0.406 W/kg
 10 gram SAR value : 0.238 W/kg
 Area Scan Peak SAR : 0.469 W/kg
 Zoom Scan Peak SAR : 0.590 W/kg

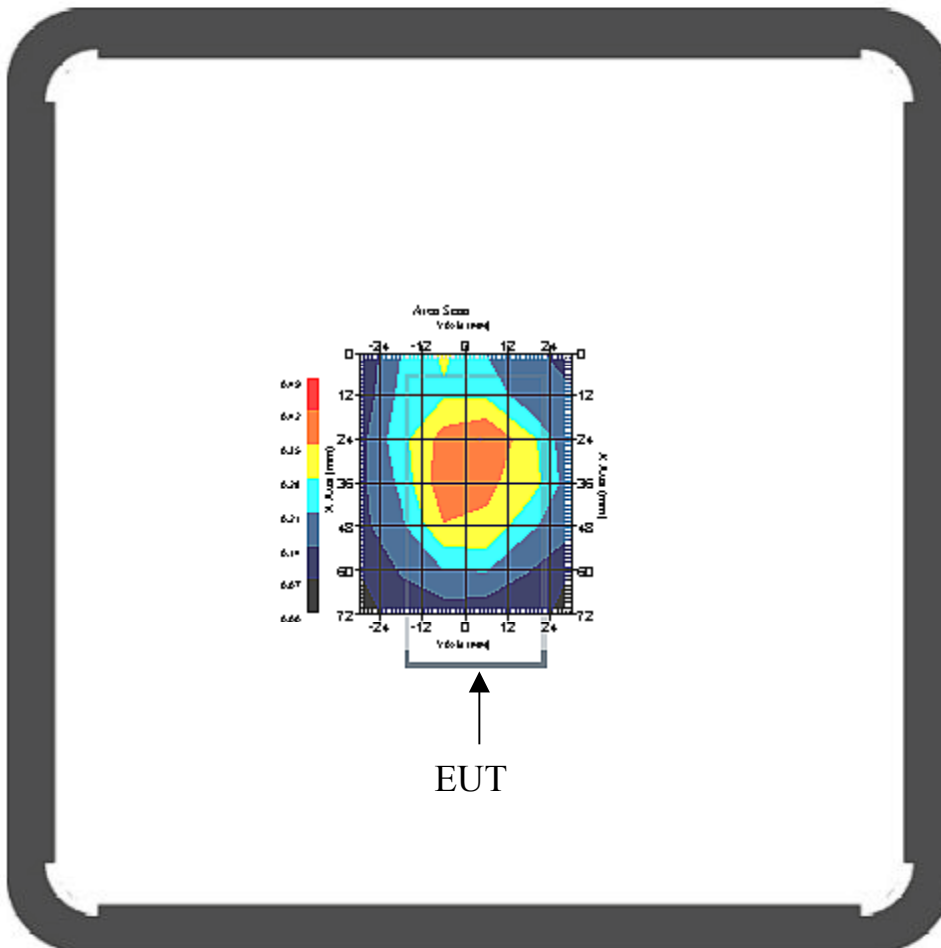
This is previous page plot (zoom in)



Measurement Data

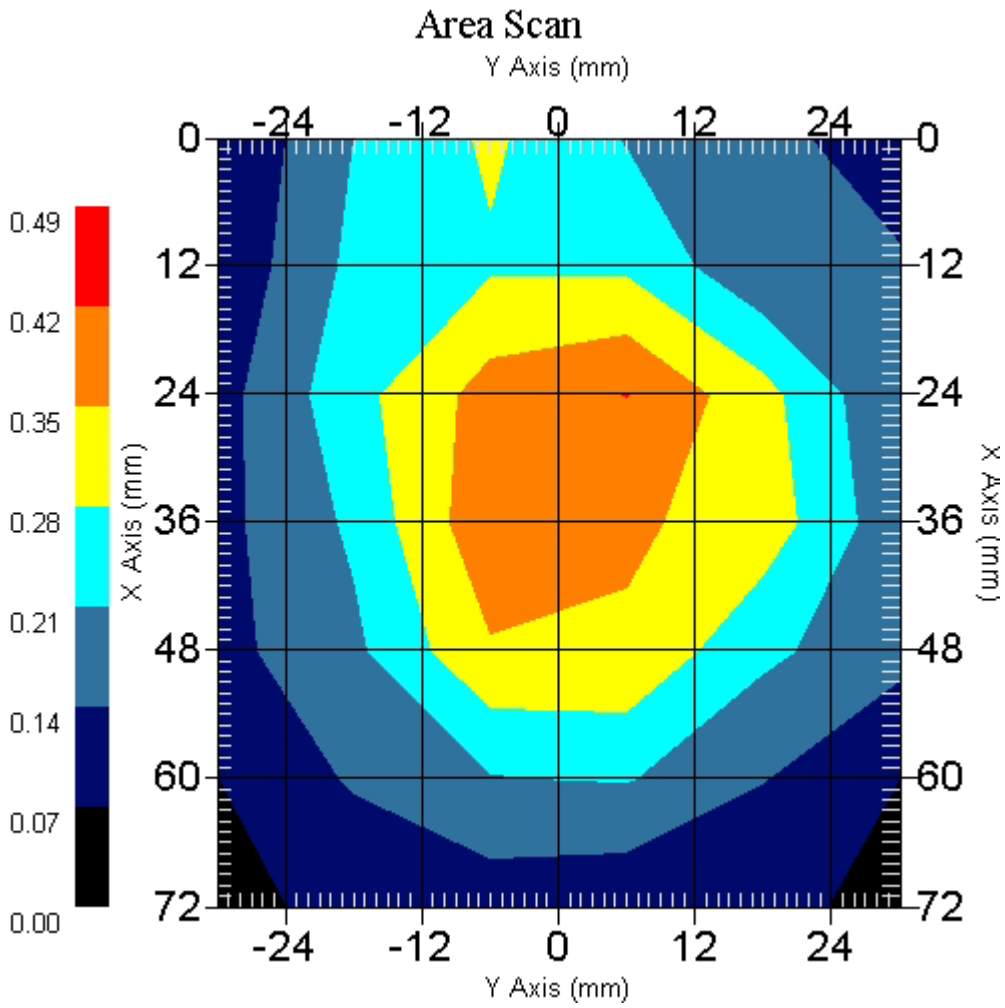
Crest Factor : 8
Tissue Temp. : 20.80 °C
Ambient Temp. : 21.20 °C
Area Scan : 7x6x1 : Measurement x=12mm, y=12mm, z=4mm
Zoom Scan : 7x7x7 : Measurement x=5mm, y=5mm, z=5mm
Power Drift-Start : 0.283 W/kg
Power Drift-Finish: 0.281 W/kg
Power Drift (%) : -0.582

DUT Position : GSM with Bluetooth-Touch
Channel : 512



1 gram SAR value : 0.397 W/kg
10 gram SAR value : 0.250 W/kg
Area Scan Peak SAR : 0.421 W/kg
Zoom Scan Peak SAR : 0.650 W/kg

This is previous page plot (zoom in)



ALSAS-10U VER 2.2.0 APREL Laboratories

SAR Test Report

Validation Date : 25-Jan-2006
Measurement Date : 25-Jan-2006

Product Data

Device Name : Benq
Type : Clamshell Cell Phone
Model : HERC3A(M580a)
Frequency : 1900.00 MHz
Max. Transmit Pwr : 1 W
Drift Time : 0 min(s)
Length : 88.7 mm
Width : 44.2 mm
Depth : 22.6 mm
Antenna Type : Internal

Phantom Data

Type : Uni-Phantom
Size (mm) : 280 x 280 x 200
Location : Center

Tissue Data

Type : BODY
Serial No. : 324-B
Frequency : 1900.00 MHz
Last Calib. Date : 25-Jan-2006
Temperature : 20.80 °C
Ambient Temp. : 21.20 °C
Humidity : 57.00 RH%
Epsilon : 51.78 F/m
Sigma : 1.567 S/m
Density : 1000.00 kg/cu. m

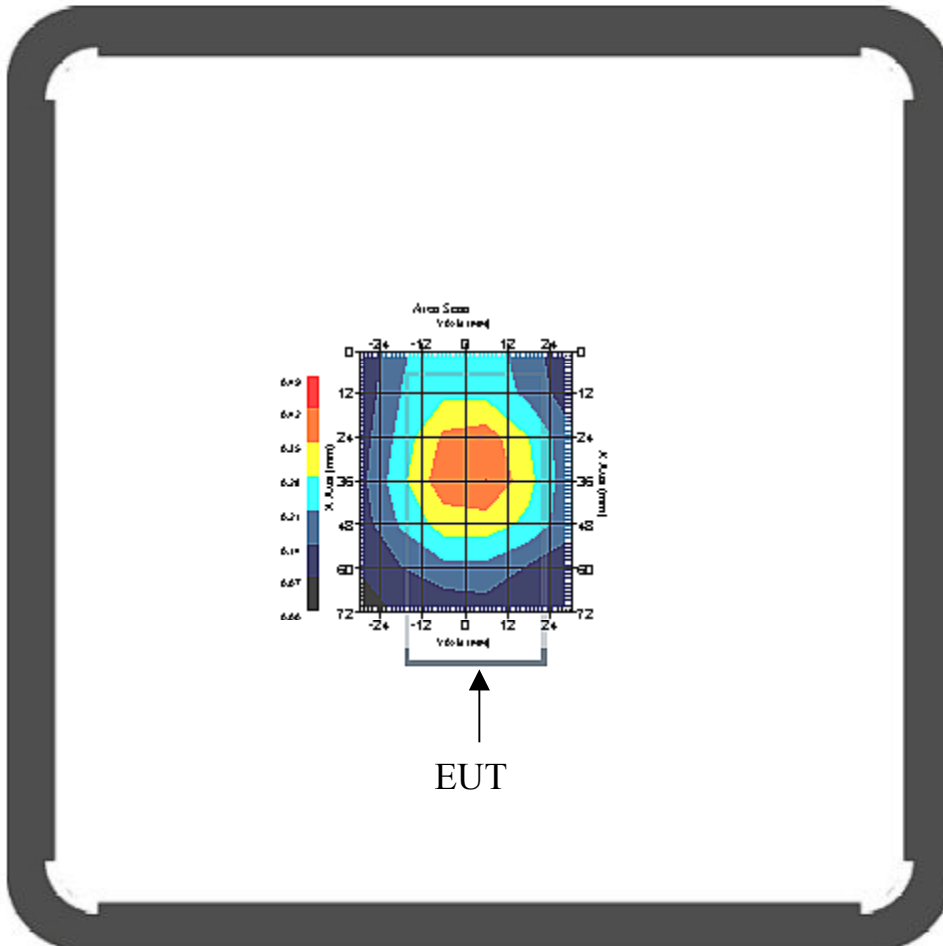
Probe Data

Name : Probe 265
Model : E020
Type : E-Field Triangle
Serial No. : 265
Last Calib. Date : 23-Mar-2005
Frequency : 1900.00 MHz
Duty Cycle Factor: 4
Conversion Factor: 5.1
Probe Sensitivity: 1.20 1.20 1.20 $\mu\text{V}/(\text{V}/\text{m})^2$
Compression Point: 95.00 mV
Offset : 1.56 mm

Measurement Data

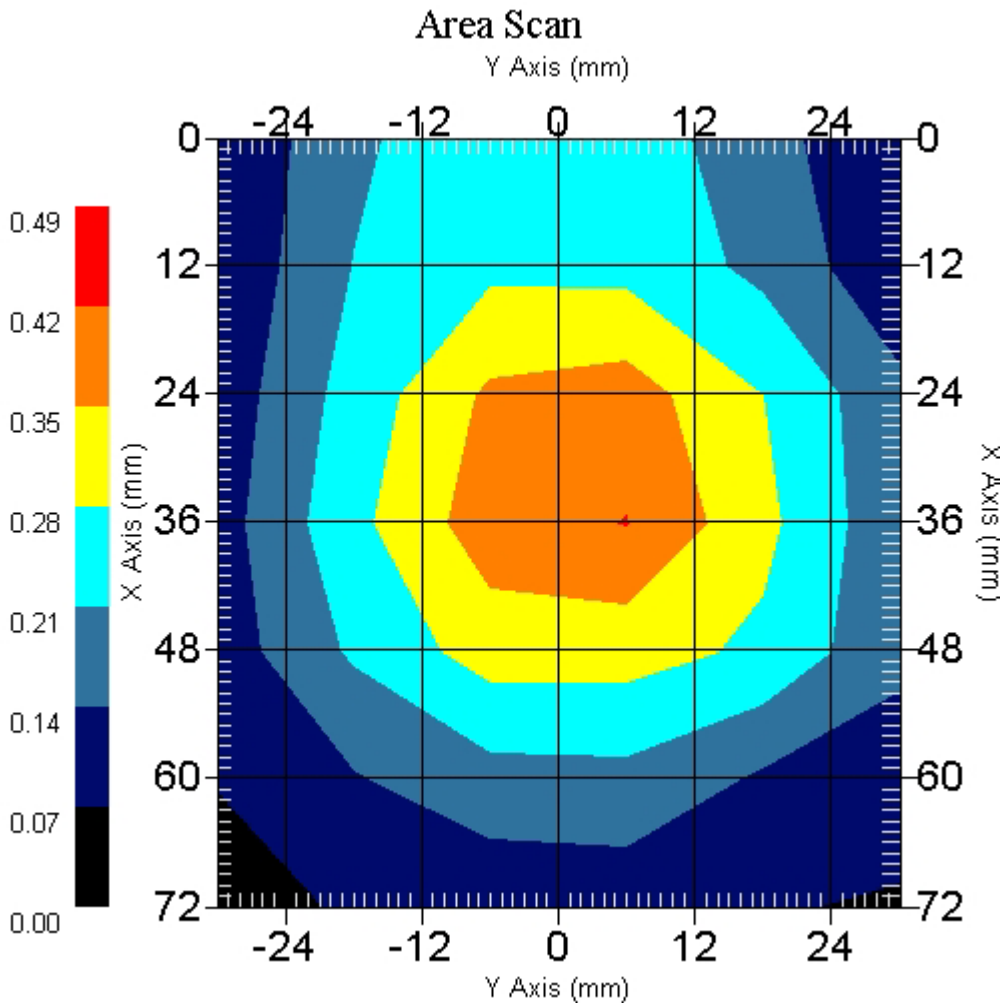
Crest Factor : 4
Tissue Temp. : 20.80 °C
Ambient Temp. : 21.20 °C
Area Scan : 7x6x1 : Measurement x=12mm, y=12mm, z=4mm
Zoom Scan : 7x7x7 : Measurement x=5mm, y=5mm, z=5mm
Power Drift-Start : 0.263 W/kg
Power Drift-Finish: 0.270 W/kg
Power Drift (%) : 2.697

DUT Position : Touch
Channel : 512



1 gram SAR value : 0.392 W/kg
10 gram SAR value : 0.245 W/kg
Area Scan Peak SAR : 0.422 W/kg
Zoom Scan Peak SAR : 0.590 W/kg

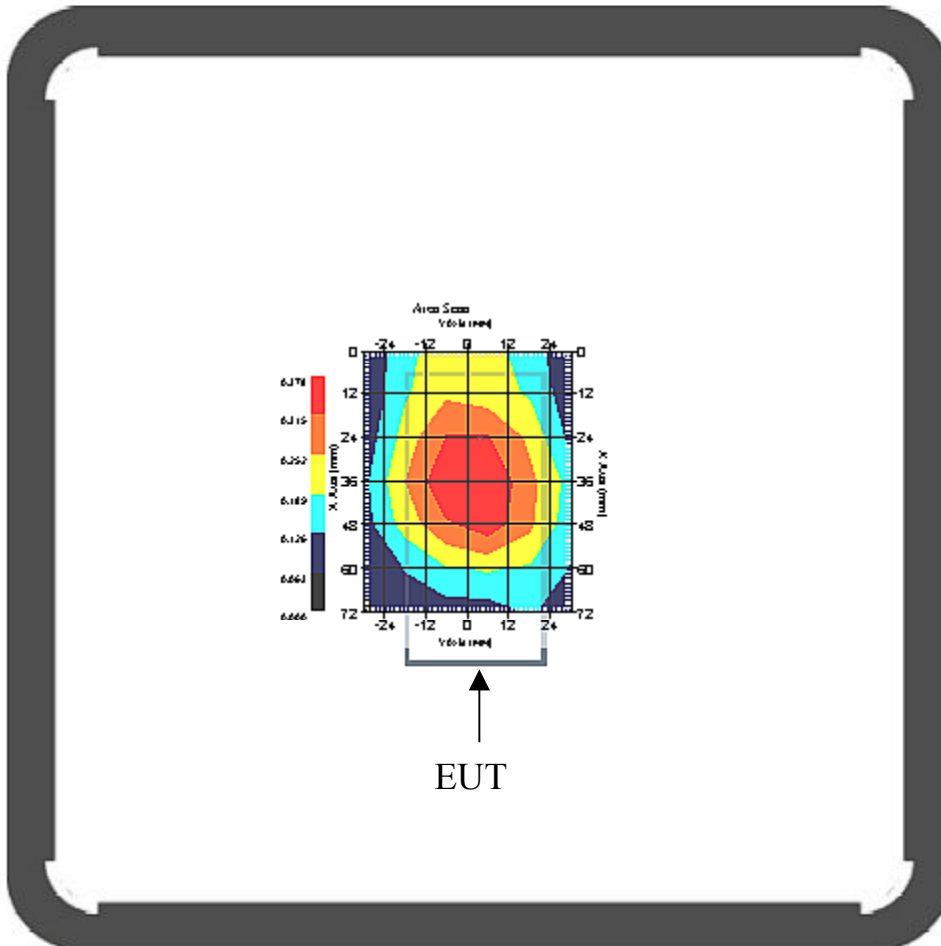
This is previous page plot (zoom in)



Measurement Data

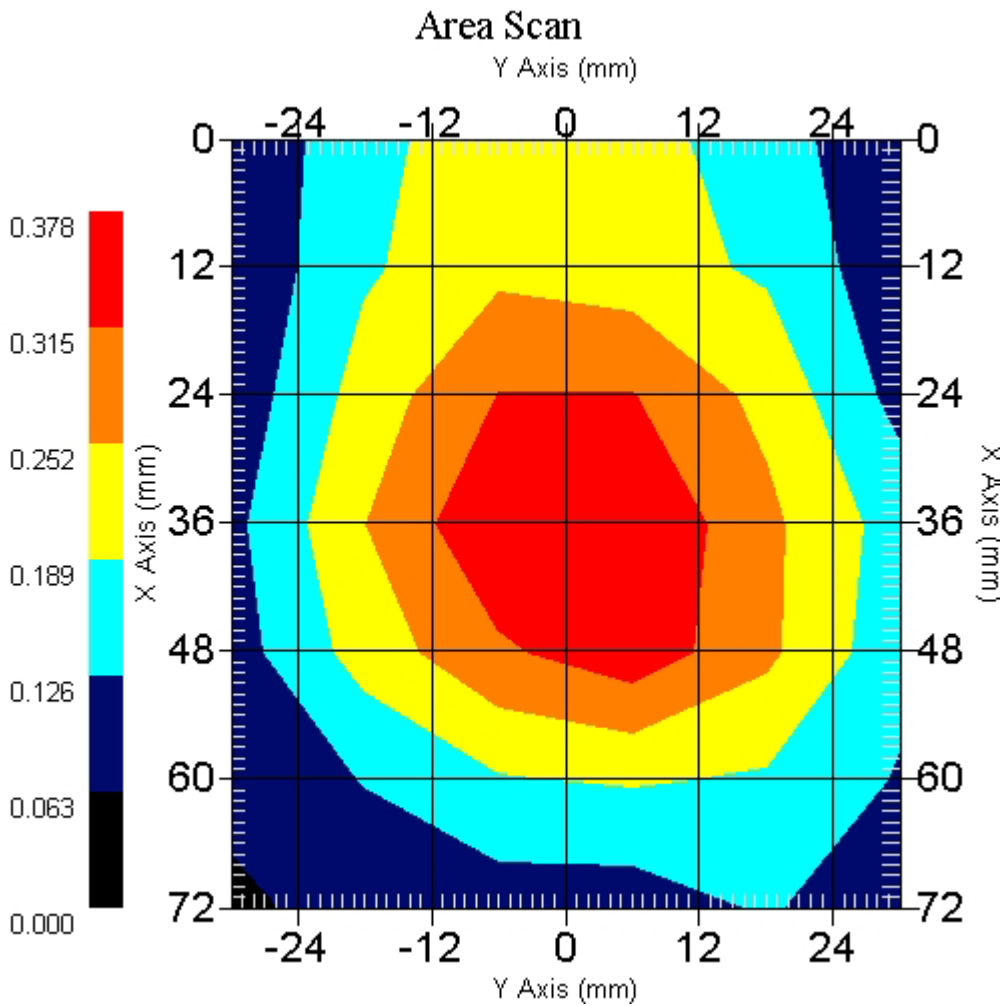
Crest Factor : 4
Tissue Temp. : 20.80 °C
Ambient Temp. : 21.20 °C
Area Scan : 7x6x1 : Measurement x=12mm, y=12mm, z=4mm
Zoom Scan : 7x7x7 : Measurement x=5mm, y=5mm, z=5mm
Power Drift-Start : 0.225 W/kg
Power Drift-Finish: 0.225 W/kg
Power Drift (%) : -0.214

DUT Position : Touch
Channel : 661



1 gram SAR value : 0.383 W/kg
10 gram SAR value : 0.236 W/kg
Area Scan Peak SAR : 0.376 W/kg
Zoom Scan Peak SAR : 0.480 W/kg

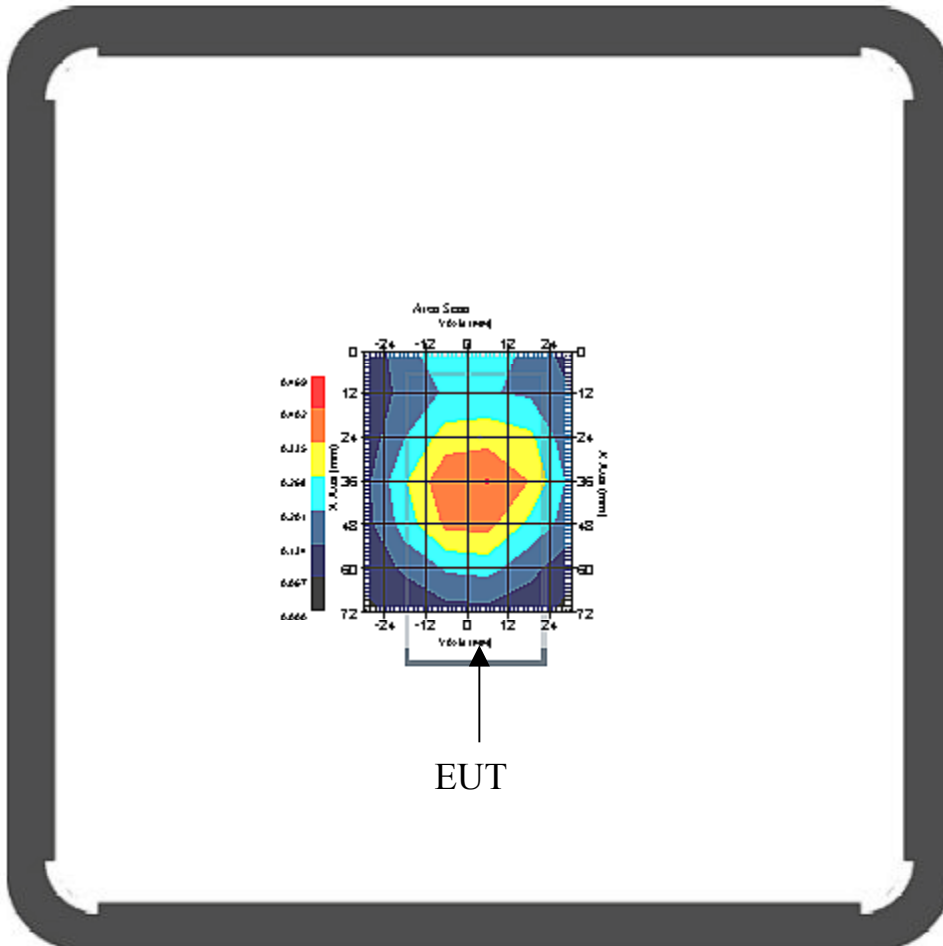
This is previous page plot (zoom in)



Measurement Data

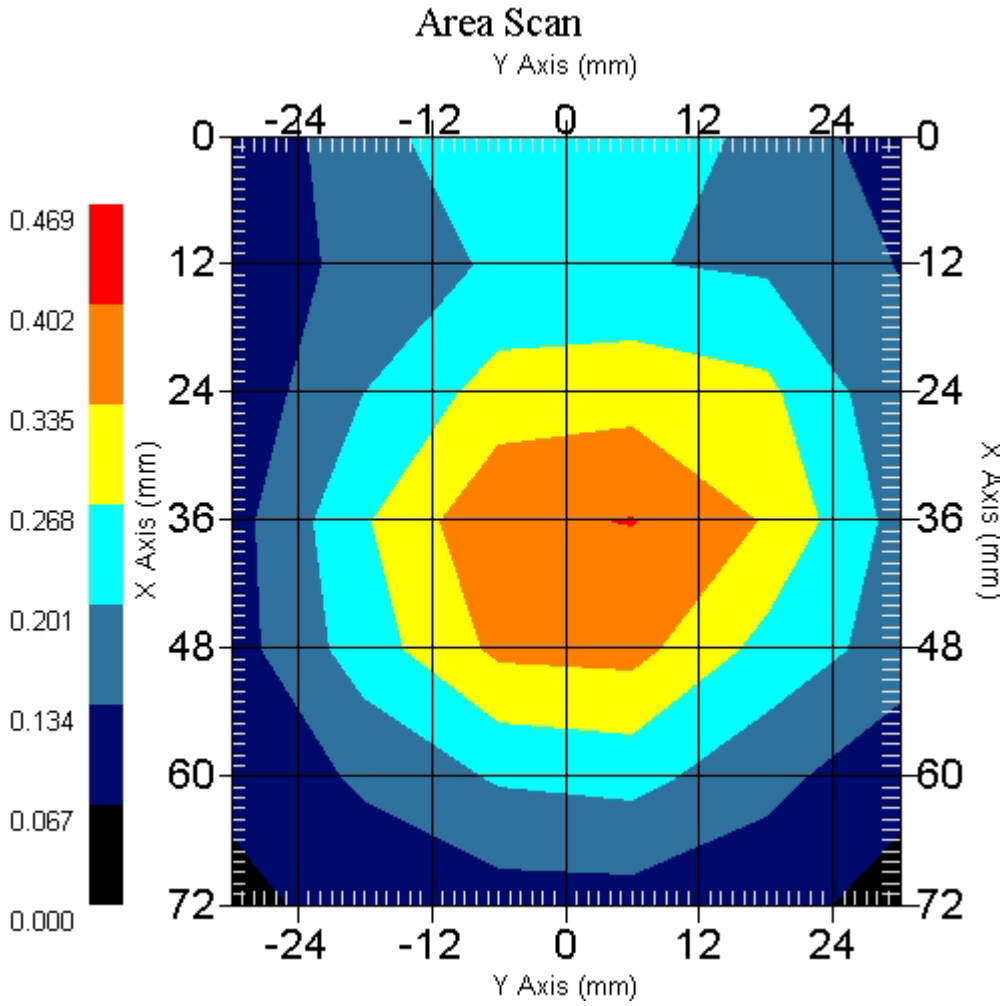
Crest Factor : 4
 Tissue Temp. : 20.80 °C
 Ambient Temp. : 21.20 °C
 Area Scan : 7x6x1 : Measurement x=12mm, y=12mm, z=4mm
 Zoom Scan : 7x7x7 : Measurement x=5mm, y=5mm, z=5mm
 Power Drift-Start : 0.220 W/kg
 Power Drift-Finish: 0.218 W/kg
 Power Drift (%) : -1.921

DUT Position : Touch
 Channel : 810



1 gram SAR value : 0.353 W/kg
 10 gram SAR value : 0.211 W/kg
 Area Scan Peak SAR : 0.404 W/kg
 Zoom Scan Peak SAR : 0.620 W/kg

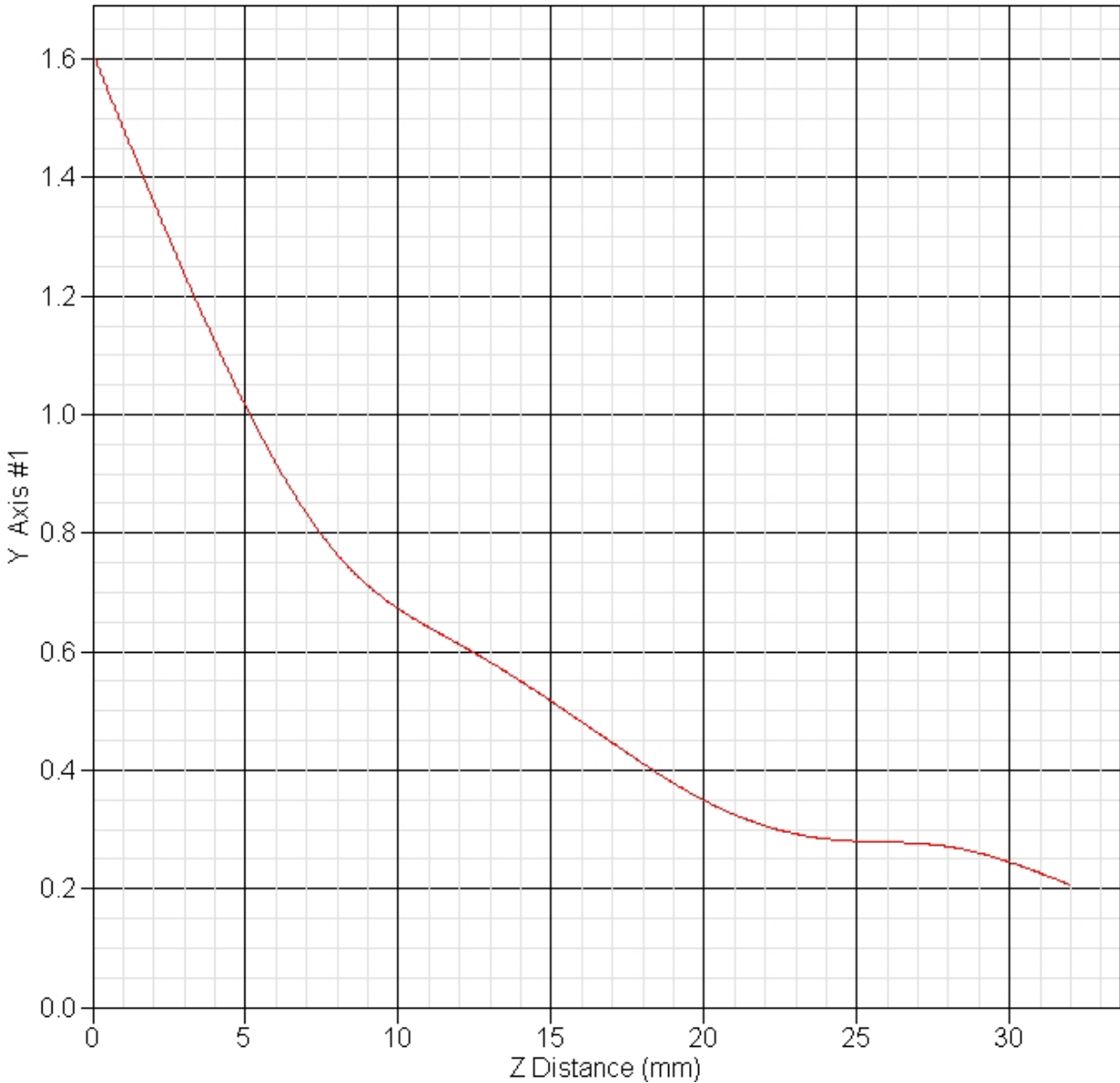
This is previous page plot (zoom in)



EUT 850MHz SAR test Z-Axis plot

(Right Head, Cheek, Channel 128)

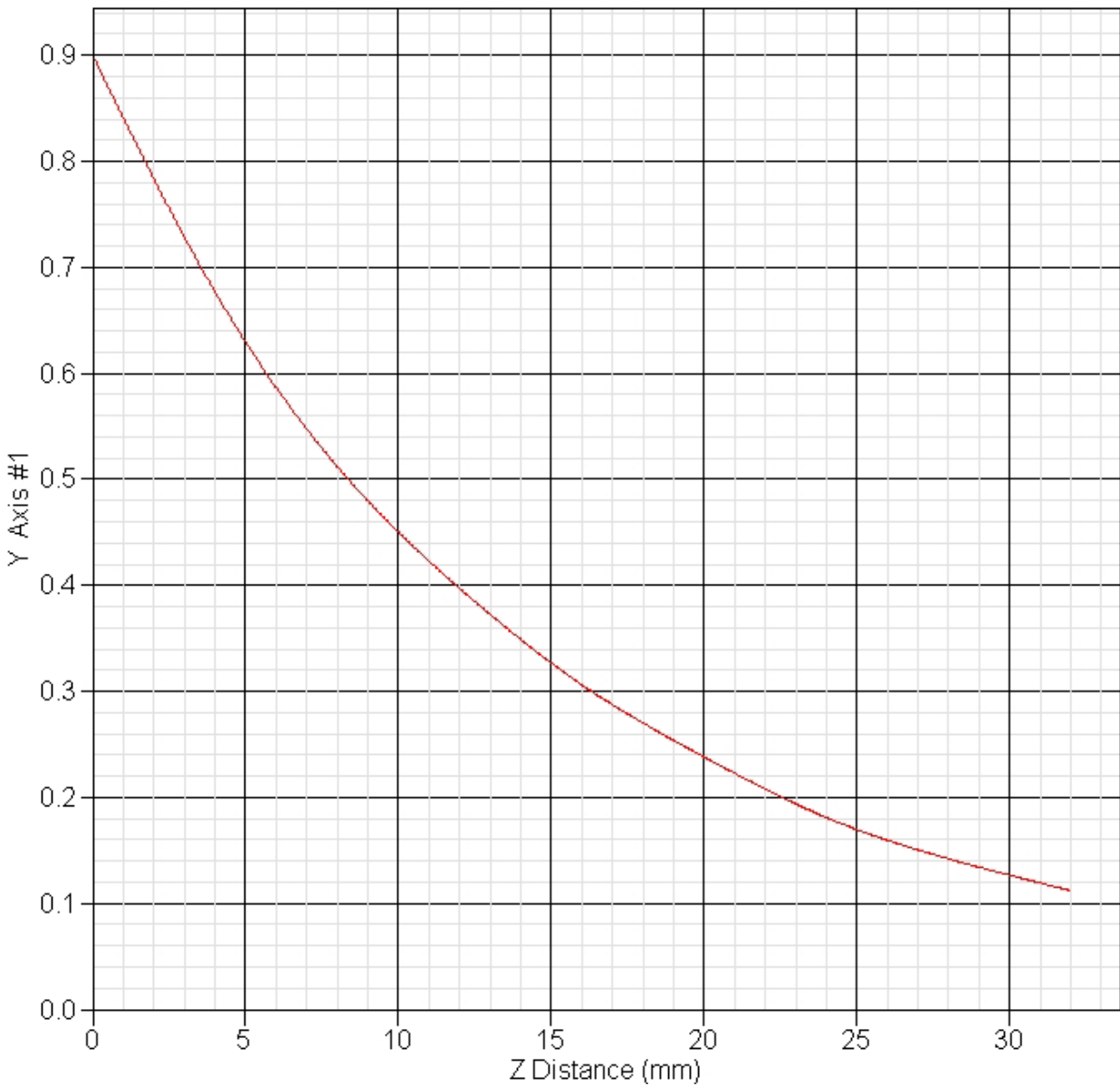
SAR-Z Axis
at Hotspot x:73.40 y:6.20



EUT 850MHz SAR test Z-Axis plot

(Body worn, channel 128)

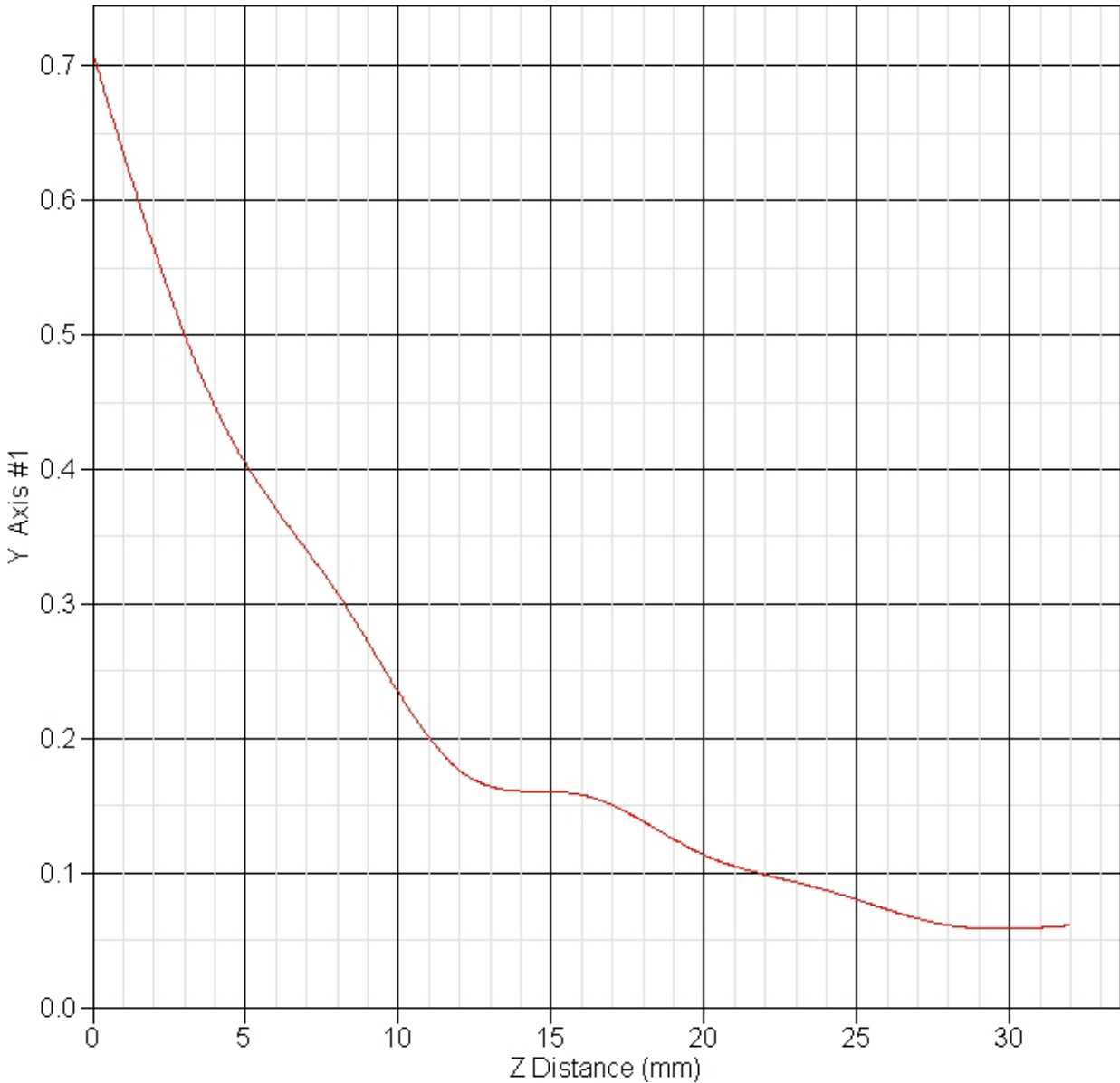
SAR-Z Axis
at Hotspot x:6.20 y:-6.00



EUT 1900MHz SAR test Z-Axis plot

(Body worn, channel 512)

SAR-Z Axis
at Hotspot x:36.30 y:5.70

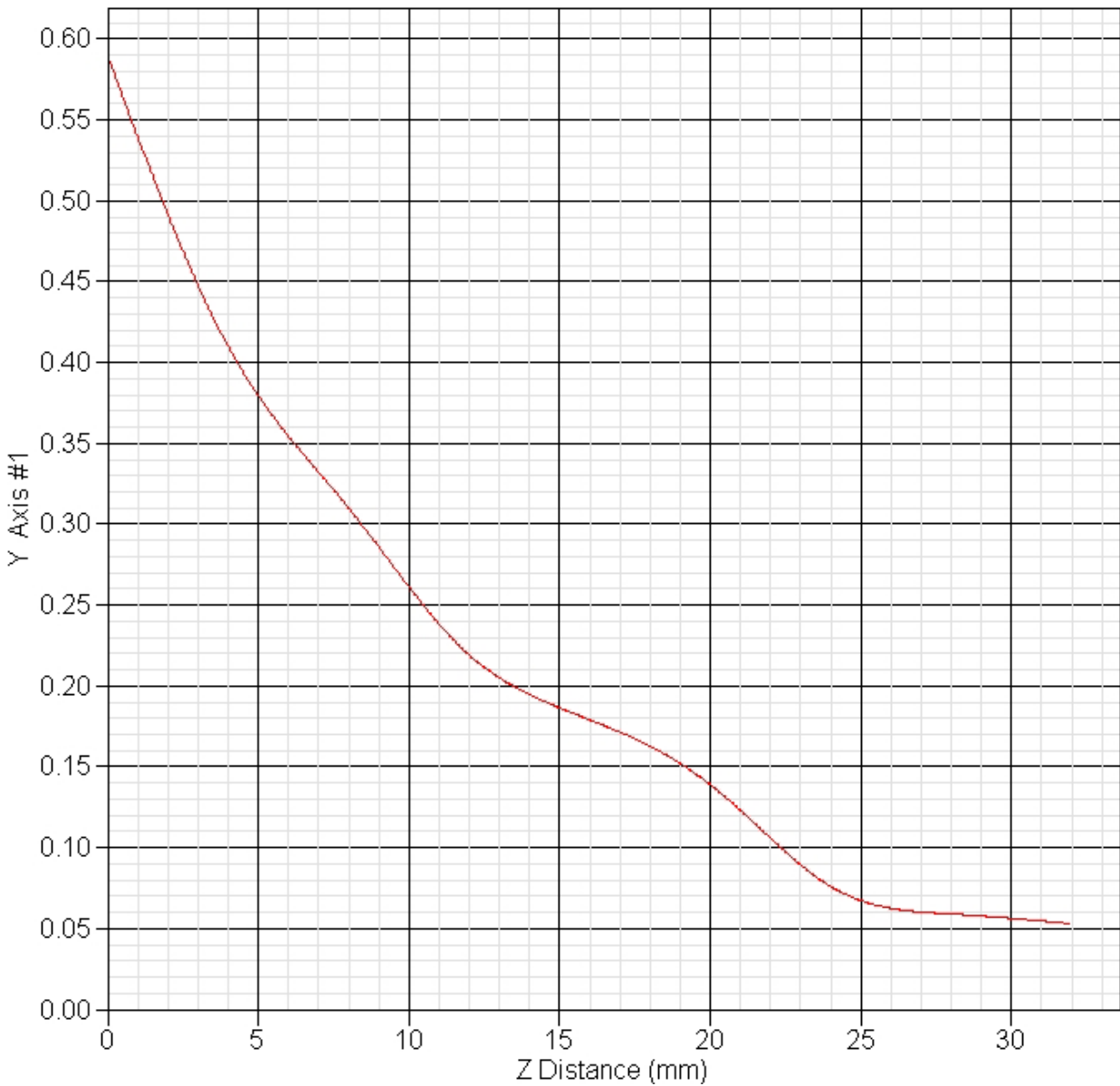


EUT 1900MHz SAR test Z-Axis plot

(Body worn, channel 512)

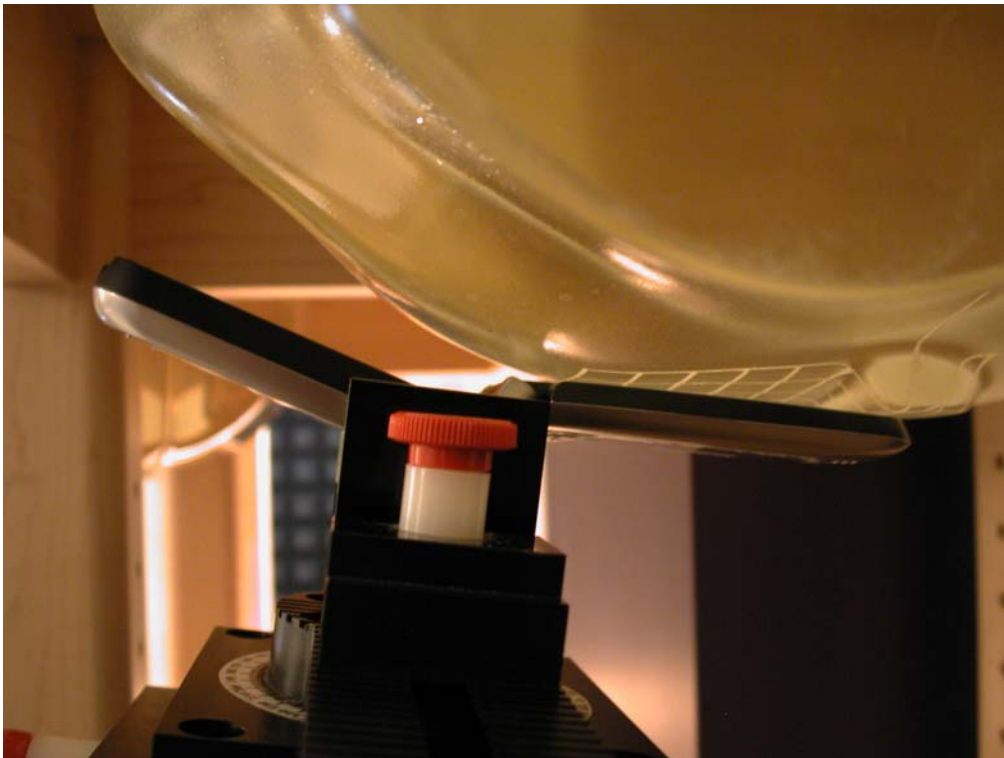
SAR-Z Axis

at Hotspot x:36.50 y:5.70

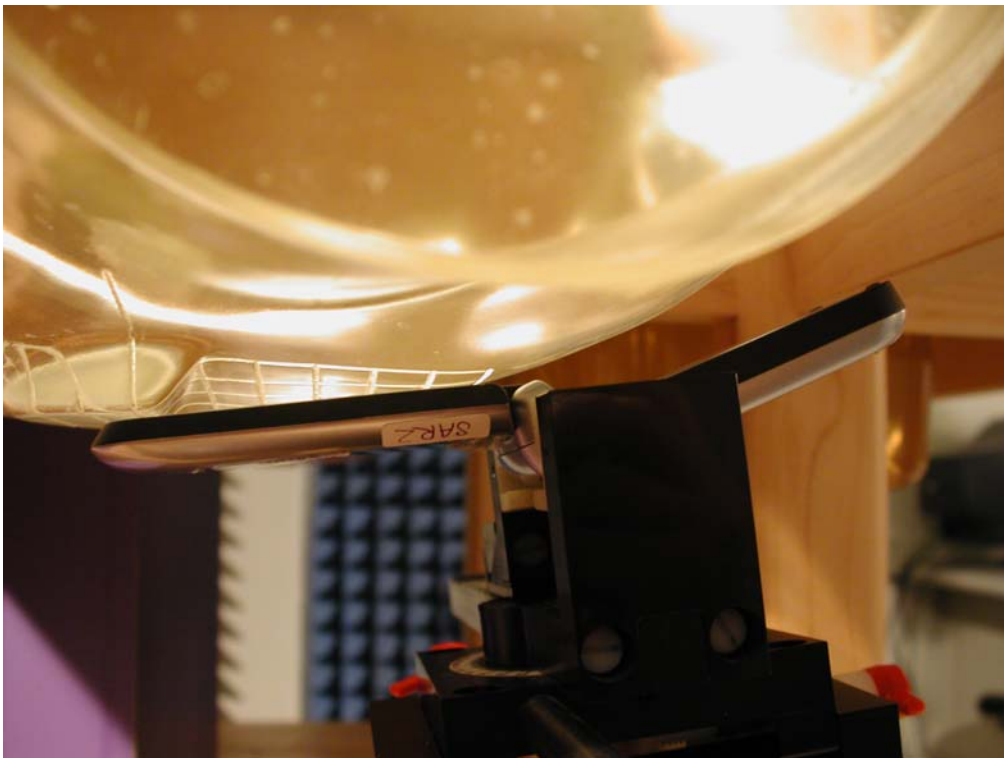


Test Setup Photographs

Right Head (EUT Cheek)



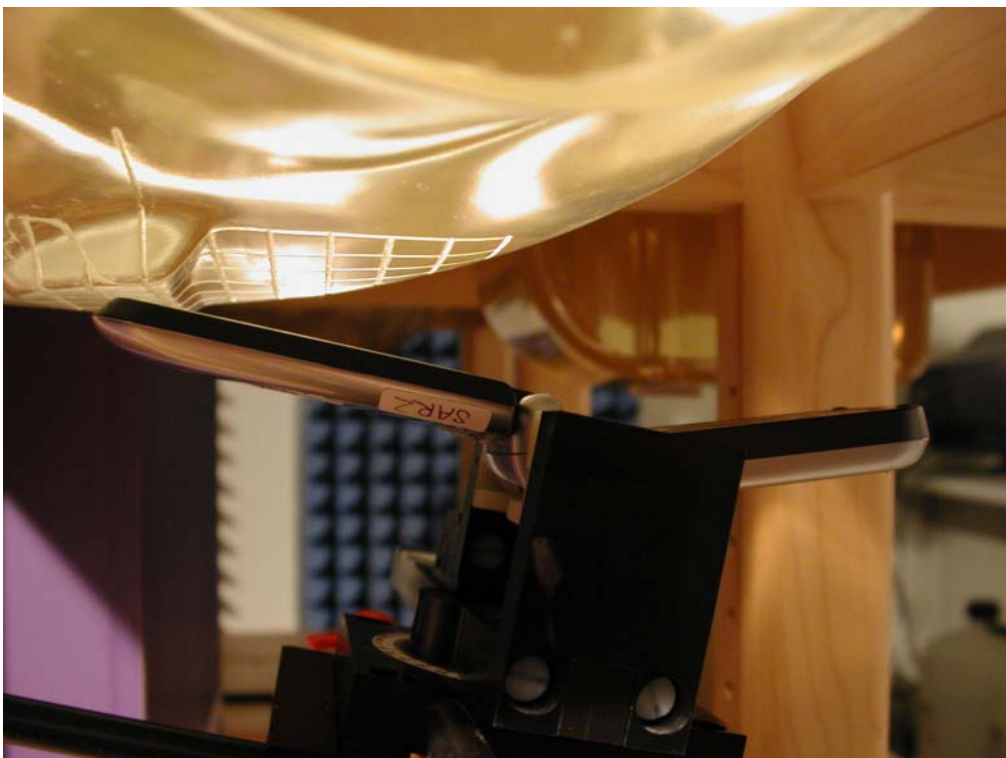
Left Head (EUT Cheek)

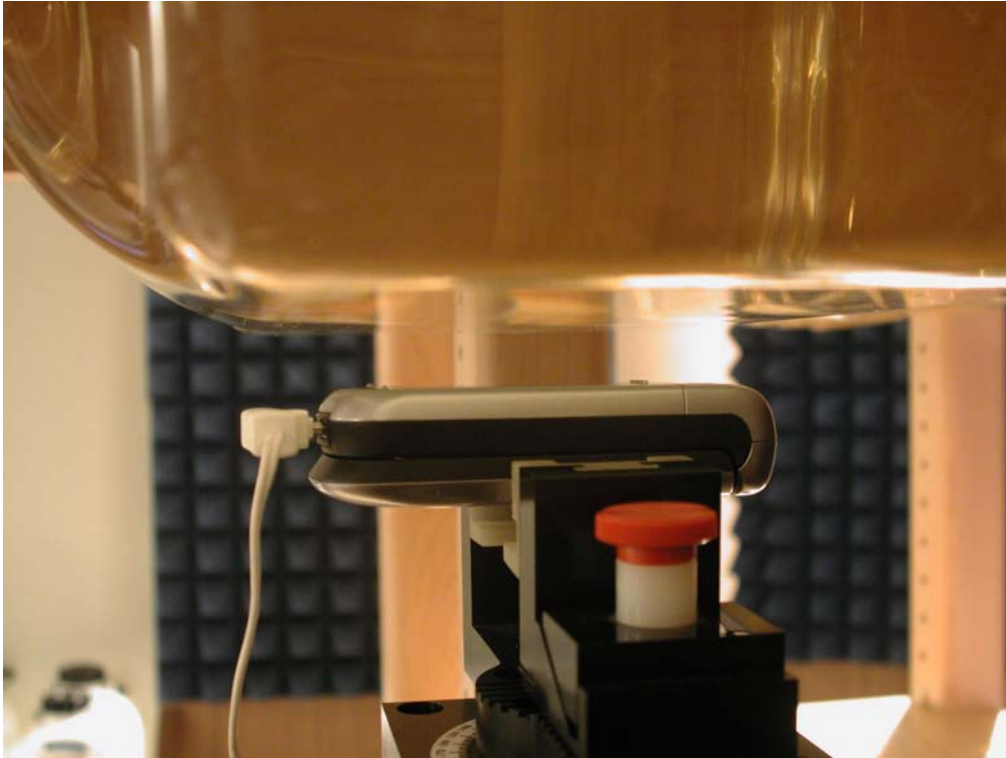


Right Head (EUT Tilted)



Left Head (EUT Tilted)



Body worn bottom (EUT Front) distance 15mm-

Note: The positions used in the measurements were according to IEEE 1528-2003.

EUT Photographs





Appendix - Probe Calibration

Miniature Isotropic RF Probe

M/N: ALS-E-020

S/N: 265

835MHz Head Calibration page2~11

835MHz Body Calibration page12~21

1900MHz Head Calibration page22~31

1900MHz Body Calibration page32~41

NCL CALIBRATION LABORATORIES

Calibration File No.: CP-549

Client: QUIETEK

CERTIFICATE OF CALIBRATION

It is certified that the equipment identified below has been calibrated in the **NCL CALIBRATION LABORATORIES** by qualified personnel following recognized procedures and using transfer standards traceable to NRC/NIST.

Equipment: Miniature isotropic RF Probe 835 MHz

Manufacturer: APREL Laboratories

Model No.: ALS-E-020

Serial No.: 265

HEAD Calibration

Calibration Procedure: SSI/DRB-TP-D01-032-E020-V2

Project No: QTKB-ALS-E-020 Probe Cal-5091

Calibrated: 23rd March 2005
Released on: 23rd March 2005

This Calibration Certificate is incomplete unless accompanied with the Calibration Results Summary

Released By: _____

NCL CALIBRATION LABORATORIES

51 SPECTRUM WAY
NEPEAN, ONTARIO
CANADA K2R 1E8

Division of APREL Lab.
TEL: (613) 820-4986
FAX: (613) 820-4161