

File : c:/idx3/SYSTEM/SARMEAS3/data/Normal/02010902\_ZOOM.VLT

Start : 9-Jan-102 08:57:03 am End : 9-Jan-102 09:12:55 am

Radio Type : Validation  
Model Number :  
Serial Number : C  
Frequency : 835 MHz  
Peak Trans. Pwr : 0.250 W  
Start Trans. Pwr : 0.250 W  
Antenna Type : Dipole  
Antenna Posn. : Internal  
Phantom Type : Flat  
Phantom Posn. : E Field  
Scan Type : ZOOM/SAR  
Probe Name : PCTEST  
Field Type : E Field  
Orientation : 0 Degrees

Mixture Type = Brain  
Mixture Dielectric Constant = 41.500  
Mixture Conductivity = 0.900

Comment :  
835 MHz Brain Validation  
SN: C  
CF=1; Amb. Temp. = 20.6 'C; Liq. Temp. = 20.1 'C

Robot : PCTEST

Probe Offset = 0.20 cm  
Sensor Factor = 0.0108  
Conversion Factor = 0.325

PCTEST Amplifier Channel Settings : 0.239 0.278 0.294

Max Location : X = 1.250, Y = -2.250, Z = 0.000 (cm) Value = 101.253

Measured Values (volts) =  
9.975E-002 7.499E-002 6.126E-002 5.159E-002 4.321E-002 3.764E-002  
3.264E-002 2.797E-002 2.391E-002 2.107E-002 1.924E-002 1.651E-002  
1.477E-002 1.300E-002 1.135E-002 9.757E-003 8.477E-003 7.363E-003  
7.077E-003 6.347E-003 5.514E-003

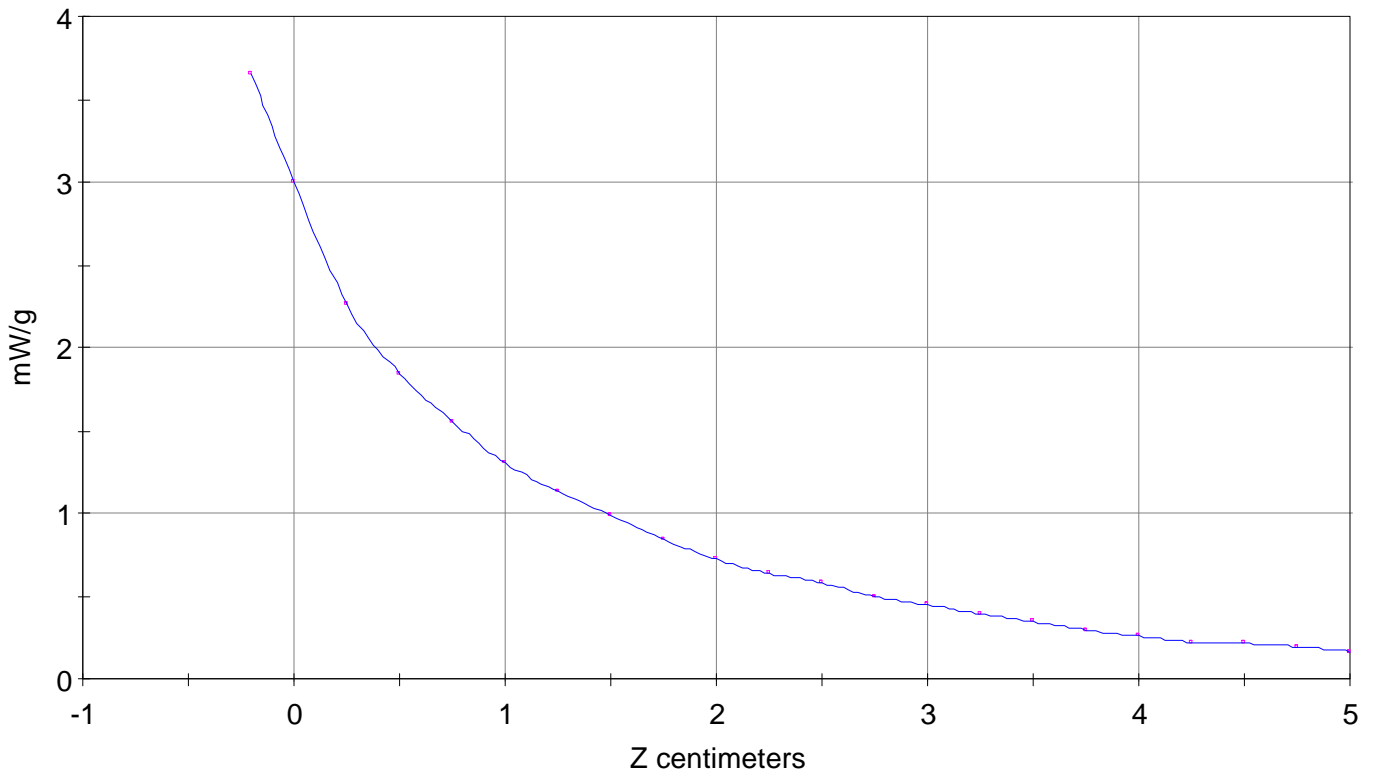
Calc. Voltage @ Surface (Vs) = 0.1213

Voltage @ 1.00 cm (Vt) = 0.0499

Ave. Voltage (Vs+Vt)/2 = 0.0856

Ave. SAR over 1 g (mW/g) = 2.5764

SAR Scan  
File : 02012926\_ZOOM  
Start : 29-Jan-102 05:57:03 pm End : 29-Jan-102 06:12:55 pm  
Validation//C;835MHz;W;Dipole/Internal;  
Flat/E Field;ZOOM/SAR;PCTEST/E Field/0 DegreesBrain/41.500/0.900

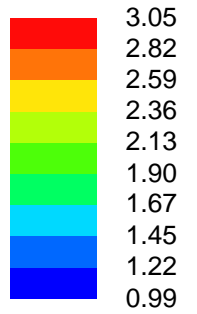
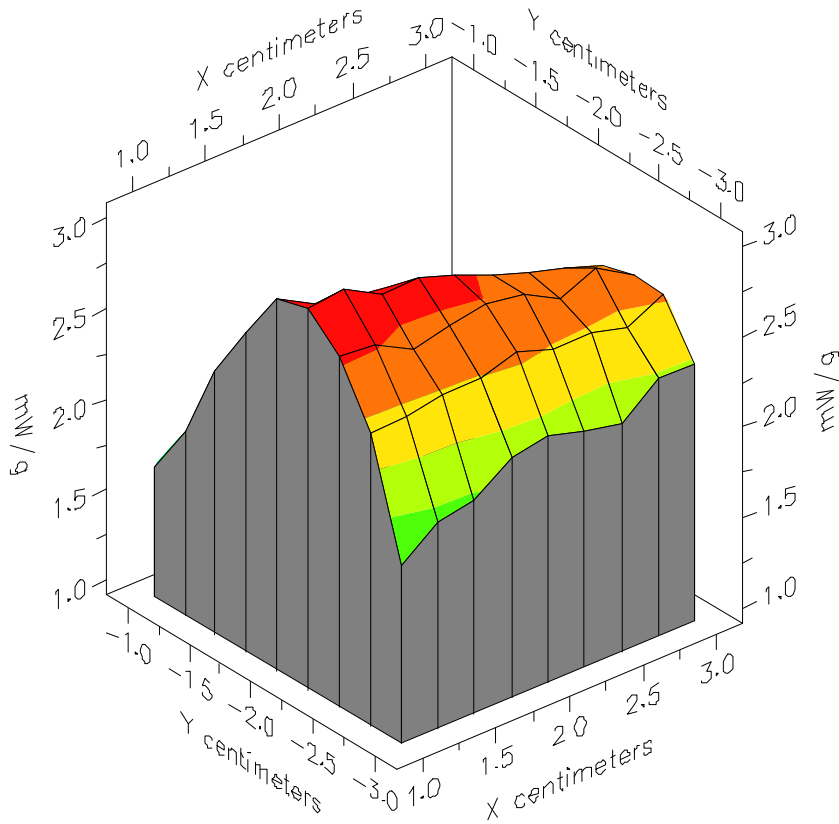


File : 02012926\_ZOOM

Start : 29-Jan-102 05:57:03 pm End : 29-Jan-102 06:12:55 pm

Validation//C;835MHz;W;Dipole/Internal;

Flat/E Field;ZOOM/SAR;PCTEST/E Field/0 DegreesBrain/41.500/0.900



File : 02012926\_ZOOM

Start : 29-Jan-102 05:57:03 pm End : 29-Jan-102 06:12:55 pm

Validation//C;835MHz;W;Dipole/Internal;

Flat/E Field;ZOOM/SAR;PCTEST/E Field/0 DegreesBrain/41.500/0.900

