

ACER FCC ID: JVPH0122 -- FM Body SAR

Generic Twin Phantom; Flat Section; Probe: ET3DV5 - SN1368 -- Probe Cal Date 2/99

Medium Parameters 835 Muscle: $\sigma = 0.95$ mho/m $\epsilon_r = 56.2$ $\rho = 1.00$ g/cm³; Antenna Position -- In; Crest Factor 1.0

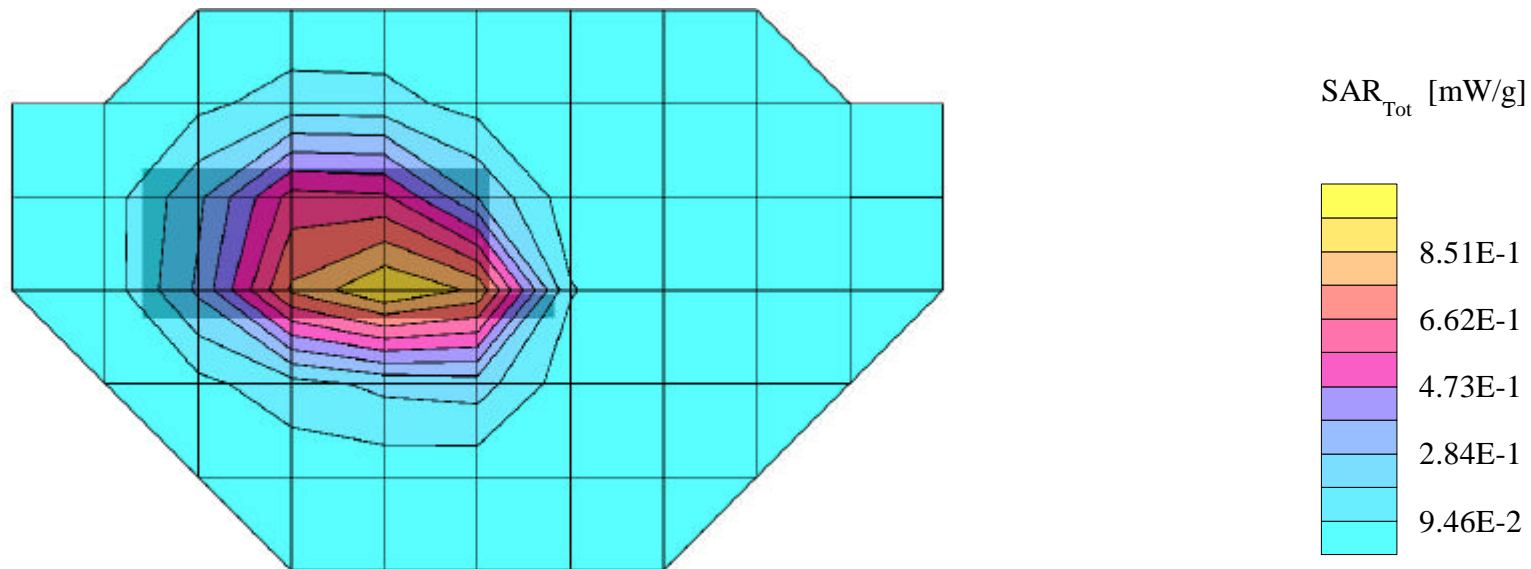
SAR (1g): 0.982 mW/g, SAR (10g): 0.663 mW/g

ACER Dual-Mode Model: C501

FM Ch.0991 [824.04MHz]

Conducted Power = 26.0dBm; Spacing = 1.0cm from flat phantom to phone

Test Date -- 02-22-2000



ACER FCC ID: JVPH0122 -- FM Body SAR

Generic Twin Phantom; Flat Section; Probe: ET3DV5 - SN1368 -- Probe Cal Date 2/99

Medium Parameters 835 Muscle: $\sigma = 0.95$ mho/m $\epsilon_r = 56.2$ $\rho = 1.00$ g/cm³; Antenna Position -- Out; Crest Factor 1.0

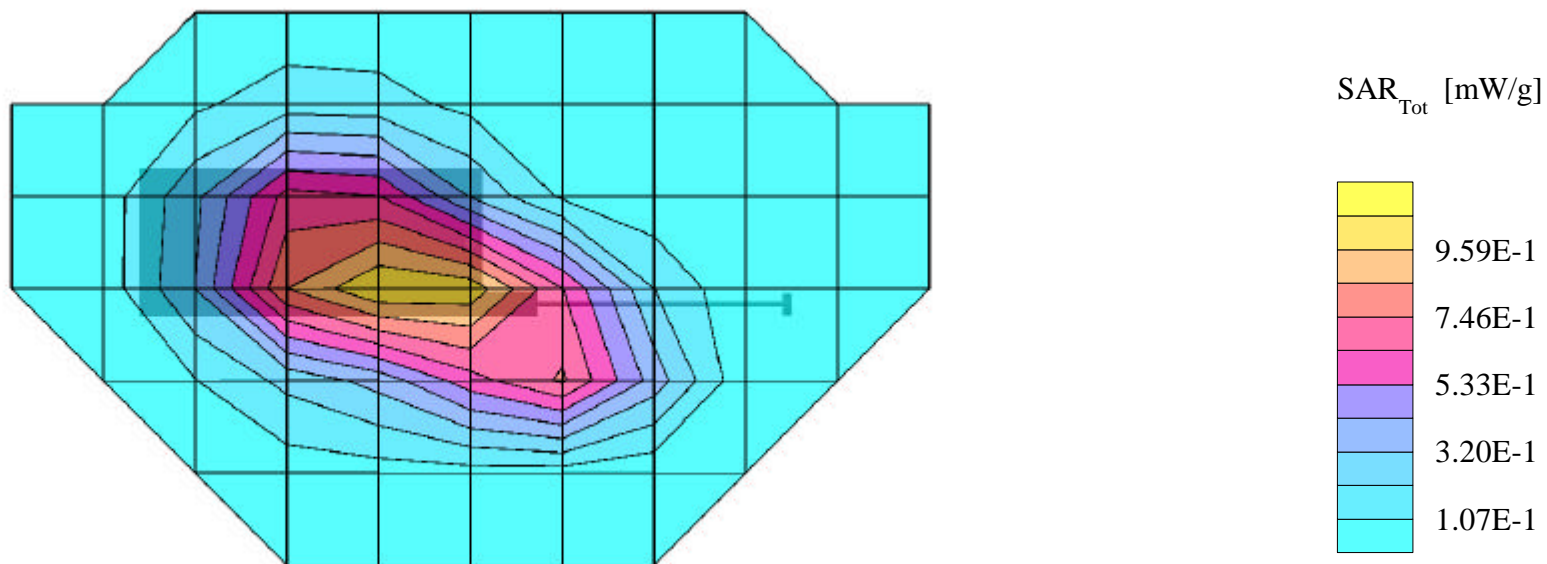
SAR (1g): 1.10 mW/g, SAR (10g): 0.727 mW/g

ACER Dual-Mode Model: C501

FM Ch.0991 [824.04MHz]

Conducted Power = 26.0dBm; Spacing = 1.0cm from flat phantom to phone

Test Date -- 02-22-2000



ACER FCC ID: JVPH0122 -- FM Body SAR

Generic Twin Phantom; Flat Section; Probe: ET3DV5 - SN1368 -- Probe Cal Date 2/99

Medium Parameters 835 Muscle: $\sigma = 0.95$ mho/m $\epsilon_r = 56.2$ $\rho = 1.00$ g/cm³; Antenna Position -- In; Crest Factor 1.0

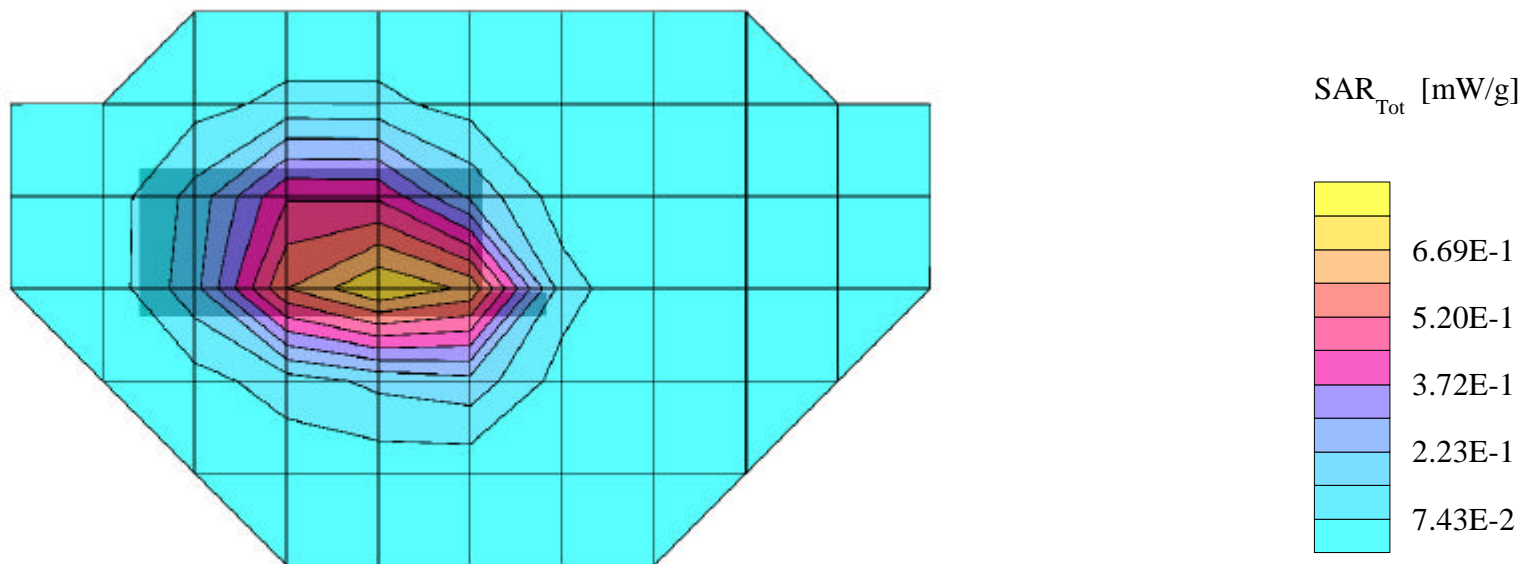
SAR (1g): 0.740 mW/g, SAR (10g): 0.495 mW/g

ACER Dual-Mode Model: C501

FM Ch.0383 [836.49MHz]

Conducted Power = 26.0dBm; Spacing = 1.0cm from flat phantom to phone

Test Date -- 02-22-2000



ACER FCC ID: JVPH0122 -- FM Body SAR

Generic Twin Phantom; Flat Section; Probe: ET3DV5 - SN1368 -- Probe Cal Date 2/99

Medium Parameters 835 Muscle: $\sigma = 0.95$ mho/m $\epsilon_r = 56.2$ $\rho = 1.00$ g/cm³; Antenna Position -- Out; Crest Factor 1.0

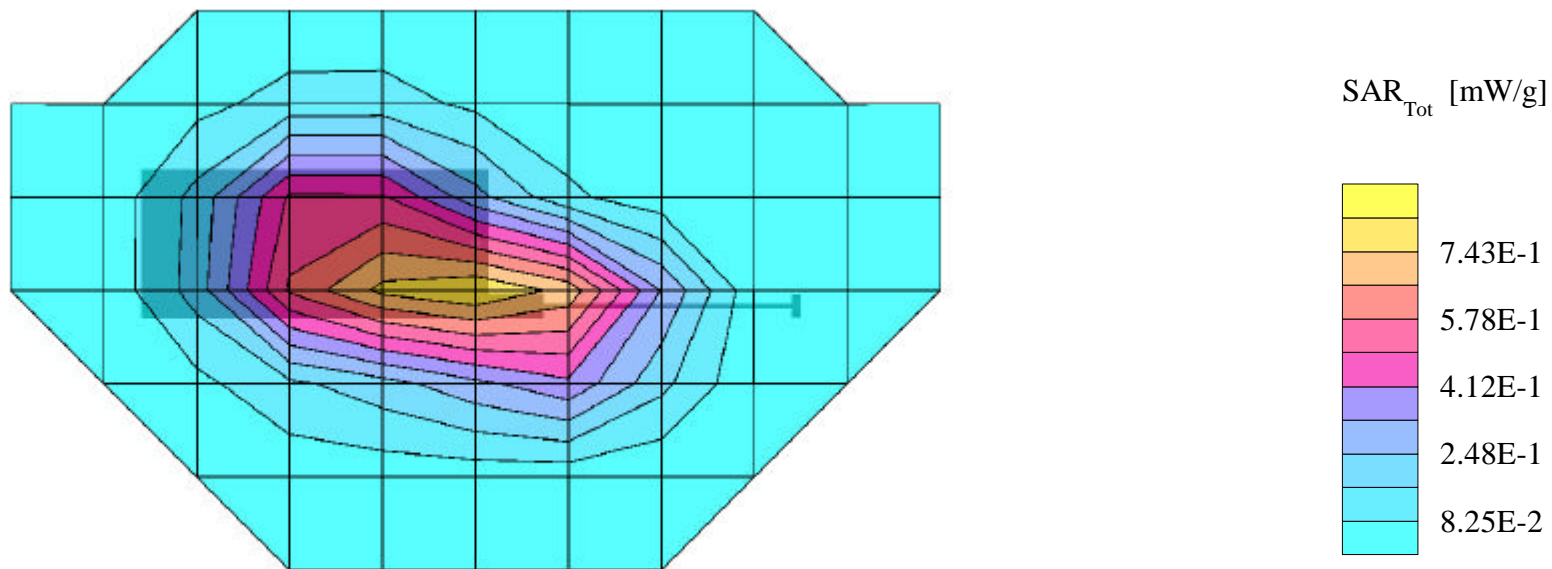
SAR (1g): 0.893 mW/g, SAR (10g): 0.551 mW/g

ACER Dual-Mode Model: C501

FM Ch.0383 [836.49MHz]

Conducted Power = 26.0dBm; Spacing = 1.0cm from flat phantom to phone

Test Date -- 02-22-2000



ACER FCC ID: JVPH0122 -- FM Body SAR

Generic Twin Phantom; Flat Section; Probe: ET3DV5 - SN1368 -- Probe Cal Date 2/99

Medium Parameters 835 Muscle: $\sigma = 0.95$ mho/m $\epsilon_r = 56.2$ $\rho = 1.00$ g/cm³; Antenna Position -- In; Crest Factor 1.0

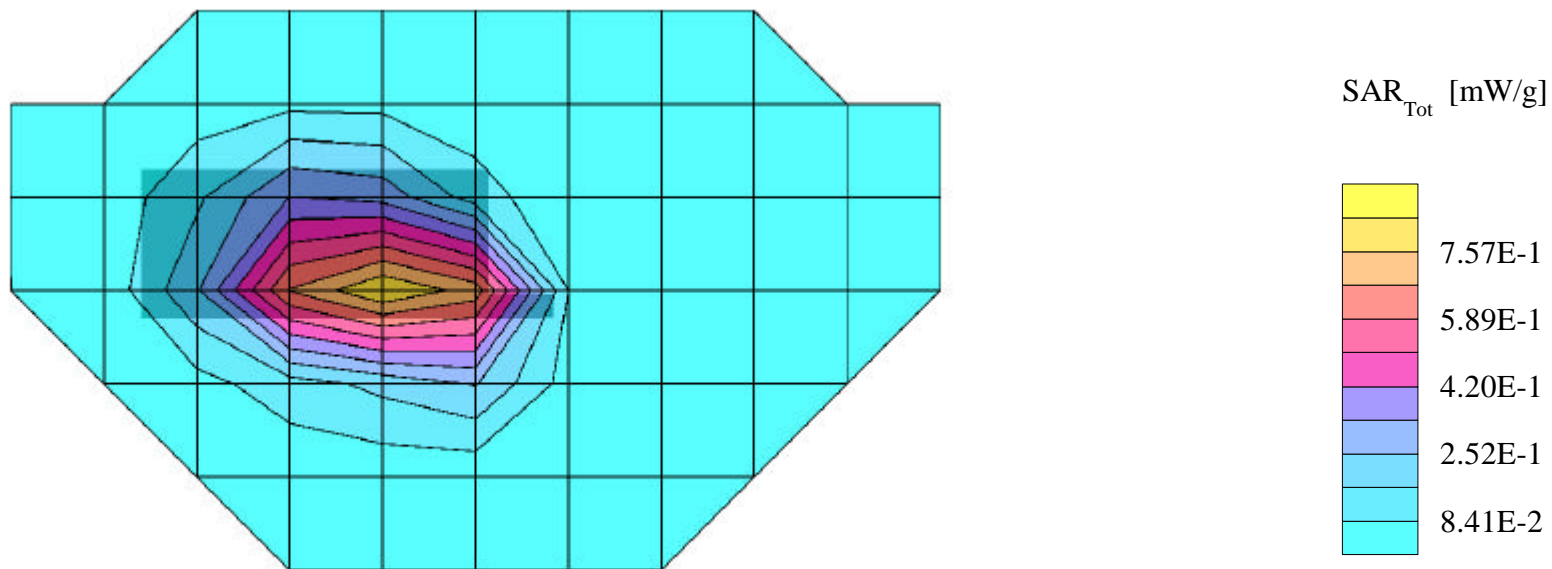
SAR (1g): 0.820 mW/g, SAR (10g): 0.544 mW/g

ACER Dual-Mode Model: C501

FM Ch.0799 [848.97MHz]

Conducted Power = 26.0dBm; Spacing = 1.0cm from flat phantom to phone

Test Date -- 02-22-2000



ACER FCC ID: JVPH0122 -- FM Body SAR

Generic Twin Phantom; Flat Section; Probe: ET3DV5 - SN1368 -- Probe Cal Date 2/99

Medium Parameters 835 Muscle: $\sigma = 0.95$ mho/m $\epsilon_r = 56.2$ $\rho = 1.00$ g/cm³; Antenna Position -- Out; Crest Factor 1.0

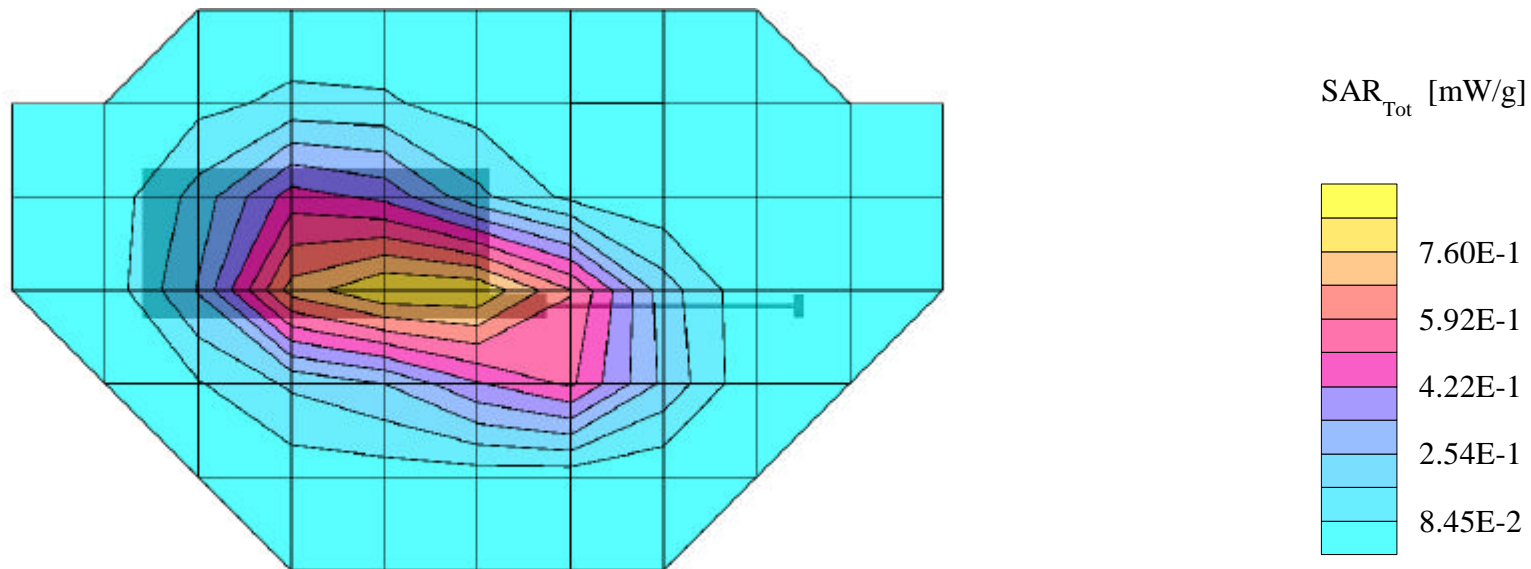
SAR (1g): 0.845 mW/g, SAR (10g): 0.544 mW/g

ACER Dual-Mode Model: C501

FM Ch.0799 [848.97MHz]

Conducted Power = 26.0dBm; Spacing = 1.0cm from flat phantom to phone

Test Date -- 02-22-2000



ACER FCC ID: JVPH0122 -- CDMA Body SAR

Generic Twin Phantom; Flat Section; Probe: ET3DV5 - SN1368 -- Probe Cal Date 2/99

Medium Parameters 835 Muscle: $\sigma = 0.95$ mho/m $\epsilon_r = 56.2$ $\rho = 1.00$ g/cm³; Antenna Position -- In; Crest Factor 1.0

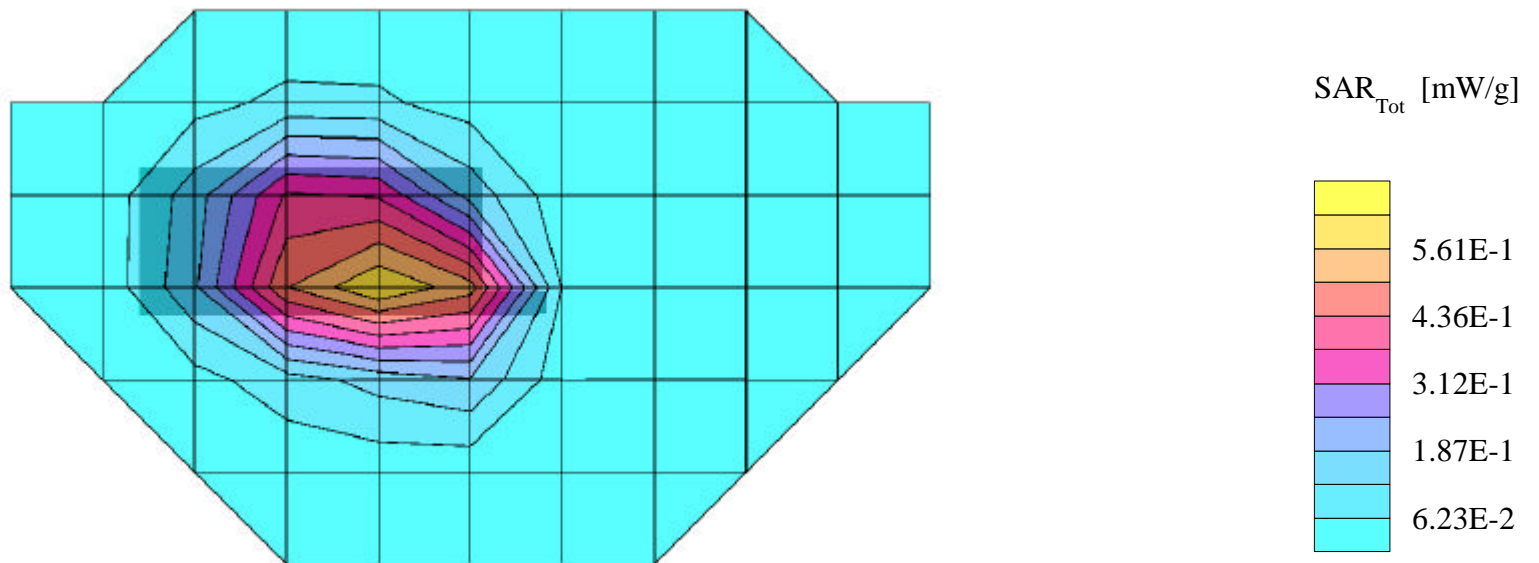
SAR (1g): 0.643 mW/g, SAR (10g): 0.432 mW/g

ACER Dual-Mode Model: C501

CDMA Ch.1013 [824.70MHz]

Conducted Power = 24.0dBm; Spacing = 1.0cm from flat phantom to phone

Test Date -- 02-22-2000



ACER FCC ID: JVPH0122 -- CDMA Body SAR

Generic Twin Phantom; Flat Section; Probe: ET3DV5 - SN1368 -- Probe Cal Date 2/99

Medium Parameters 835 Muscle: $\sigma = 0.95$ mho/m $\epsilon_r = 56.2$ $\rho = 1.00$ g/cm³; Antenna Position -- Out; Crest Factor 1.0

SAR (1g): 0.811 mW/g, SAR (10g): 0.513 mW/g

ACER Dual-Mode Model: C501

CDMA Ch.1013 [824.70MHz]

Conducted Power = 24.0dBm; Spacing = 1.0cm from flat phantom to phone

Test Date -- 02-22-2000

